



# 2026 ANNUAL CONVENTION & EXPOSITION CONVENTION BROCHURE

FRIDAY, APR. 17 – SUNDAY, APR. 19



MICHIGAN PHARMACISTS ASSOCIATION

# HERE TO SERVE YOU

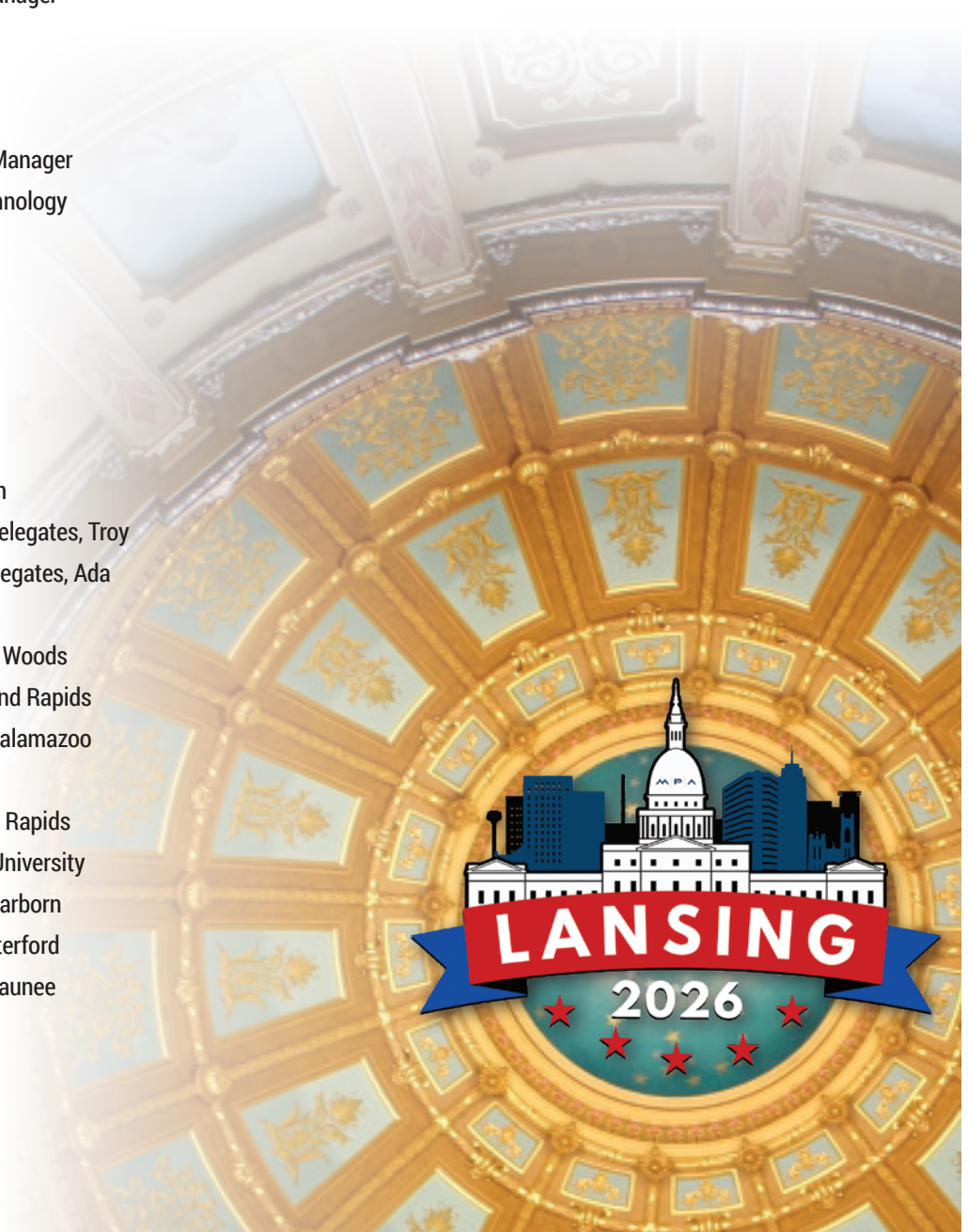
## MPA Staff

Ashley Builta, Director of Professional Development and Education  
Sona Camara, Senior Membership Manager  
Rick Drabek, MPF Executive Director  
Janet Elliott, Administrative Coordinator  
Bryan Freeman, Chief Strategy Officer  
Mark Glasper, Chief Executive Officer  
Farah Jalloul-Rizk, Chief Pharmacy Officer  
Dave Laczynski, Controller  
Amy Perez, Finance and Human Resources Manager  
Mariam Rizk, Education Coordinator  
Eric Roath, Director of Government Affairs  
Leang Mey Tao, Executive Fellow  
Ryan Weiss, Marketing and Communications Manager  
Carter Weslock, Director of Information & Technology

## MPA Executive Board

Ryan Greenley, Board Chair, Chassell  
Michelle Kelly, President, Big Rapids  
Ryan Bickel, President-elect, Kalamazoo  
Marc Guzzardo, Treasurer, Rochester  
Mark Glasper, Secretary/MPA CEO, Williamston  
Dmitriy Martirosov, Speaker of the House of Delegates, Troy  
Robin Curtis, Vice Speaker of the House of Delegates, Ada  
Lisa Bade, Executive Board Member, Rockford  
Keith Binion, Executive Board Member, Harper Woods  
Brittany Kinney, Executive Board Member, Grand Rapids  
Rebecca Maynard, Executive Board Member, Kalamazoo  
David Miller, Executive Board Member, Alto  
Kyle Schmidt, Executive Board Member, Grand Rapids  
Christiana Shore, SPEC Liaison, Wayne State University  
Michael Sleiman, Executive Board Member, Dearborn  
Hanadi Thomas, Executive Board Member, Waterford  
Steven Wallner, Executive Board Member, Negaunee

Welcome .....	3
Convention At-a-Glance .....	4
General Information .....	6
Navigating the Convention .....	16
Convention Itinerary .....	22
Awards Information .....	35



# WELCOME!



**BY MICHELLE KELLY,**  
*Pharm.D., MPA president*

Welcome to the 2026 Michigan Pharmacists Association Annual Convention & Exposition! On behalf of the MPA Executive Board and staff, I am excited to welcome you to Lansing – home to our state’s Capitol and MPA headquarters. We’ve introduced several exciting updates to this year’s convention while keeping many of the traditions that make ACE a favorite gathering for pharmacists across Michigan.

ACE weekend is one of my favorite times of the year. It’s a chance to reconnect with mentors and friends from across the state, learn fresh ideas and return home re-energized about the work we do every day. When we gather as a profession, I’m reminded of the strength of our community and feel inspired to take on the challenges that come with practicing pharmacy today.

This year’s theme, “**Find Your Why,**” invites each of us to reflect on the reasons we chose this profession. Every pharmacist has a story. Maybe your why was a desire to help others, a fascination with medications and science, a commitment to public health, the goal of owning a business, or the opportunity to lead and innovate in health care. Whatever your reason, it is worth revisiting.

In the realities of daily practice, it can be easy to lose sight of that purpose. Heavy workloads, time pressures and personal responsibilities can sometimes overshadow the passion that brought us into pharmacy in the first place. My hope is that this weekend gives you the space to reconnect with your why and carry that renewed sense of purpose back into your workplace. Now more than ever, patients and communities rely on pharmacists for access to care, medication expertise and trusted guidance within an increasingly complex health care system.

There is a full weekend of programming and events designed to help you learn, connect and recharge. For pharmacists, student pharmacists and technicians within their first 10 years of practice, we are excited to bring back the **New Practitioner Night on the Town** on Friday evening at Lansing Shuffle. This is an amazing opportunity to build connections in a relaxed and welcoming environment.

The **MPF Adopt-a-Student program** has also been reimagined this year. Students and mentors who signed up will connect over breakfast and a friendly round of mini-golf on Saturday morning.

I’m also pleased to welcome everyone to the return of the **President’s Reception** on Saturday from 7-9 p.m. Join us for heavy appetizers, refreshments and the chance to celebrate the incredible accomplishments of several outstanding pharmacists who will be recognized at the start of the evening.

Be sure to spend time in the exhibit hall, where you can connect with industry partners, learn about new products and services, and enter drawings for prizes. As part of this year’s theme, keep an eye out for hidden “Y” symbols throughout the convention center – finding them may earn you a few extra surprises.

Of course, ACE would not be complete without our outstanding continuing education sessions, keynote presentations, poster sessions and the NASPA OTC Competition. These sessions highlight the innovation, dedication and expertise within our profession. I also encourage you to attend the Advocacy Town Hall on Sunday morning and stay for the House of Delegates to see how decisions are made that shape the future of pharmacy in Michigan.

Thank you for being here and for the work you do every day to serve patients and advance our profession. Please don’t hesitate to stop me during the convention to say hello – I would love to connect with you.

Enjoy your time at ACE, and most importantly, **find your why.**

**Michelle Kelly**  
2026 MPA President

# CONVENTION AT-A-GLANCE

## Thursday, April 16

**3:30-7 p.m.** – Exhibitor Registration Open  
*Main Concourse, First Floor*

**5-7 p.m.** – Convention Registration Open for Attendees  
*Main Concourse, First Floor*

## Friday, April 17

**6:30 a.m.-3:30 p.m.** – Exhibitor Registration  
*Main Concourse, First Floor*

**6:30 a.m.-6 p.m.** – Convention Registration Open  
*Main Concourse, First Floor*

**7:15-9:15 a.m.** – Convention Attendee Continental Breakfast  
*River Concourse, First Floor*

**8-11:30 a.m.** – Educational Programming  
*First and Second Floors*

**11:45 a.m.-12:45 p.m.** – Past Presidents' Lunch  
*Governor's Room, Second Floor – Invitation Only*

**11:45 a.m.-12:45 p.m.** – Sponsor Product Theater Sessions  
& Attendee Lunch  
*Ballroom, Meeting Rooms 101/102, 103/104, 201/202 and 203-205*

**1-2:30 p.m.** – Welcome & Opening Keynote Session  
*Ballroom, First Floor*

**2:30-3 p.m.** – Refreshment Break  
*River Concourse, First Floor*

**3-5:15 p.m.** – Educational Programming  
*First and Second Floors*

**5-8 p.m.** – Exhibit Hall Grand Opening & Reception  
*Exhibit Hall A, First Floor*

**5:30-6:30 p.m.** – ACE Poster Presentations  
*Michigan Avenue Concourse, First Floor*

**6:30-9 p.m.** – Ferris State University Alumni Reception  
*Meeting Rooms 201/202, Second Floor*

**6:30-9 p.m.** – Wayne State University Alumni Reception  
*Meeting Rooms 203-205, Second Floor*

**7-8 p.m.** – Pharmacy Tech Connect Reception\*  
*(Pre-registration required) Boardroom 1, Second Floor*

**8-11 p.m.** – New Practitioner Night on the Town  
*Lansing Shuffle – Adjacent to Lansing Center*

## Saturday, April 8

**6:30 a.m.-5:30 p.m.** – Convention Registration Open  
*Main Concourse, First Floor*

**6:30 a.m.-2 p.m.** – Exhibitor Registration  
*Main Concourse, First Floor*

**7:15-9:15 a.m.** – Convention Attendee Continental Breakfast  
*River Concourse, First Floor*

**7-8 a.m.** – MPF Mini-Golf & Breakfast  
*Exhibit Hall A, First Floor*

**8 a.m.-4:30 p.m.** – HPLA Final Session  
*Governor's Room, Second Floor*

**8-10:15 a.m.** – Educational Programming  
*First and Second Floors*

**8 a.m., 9:15 a.m., 1 p.m. and 4 p.m.** – Escape Room  
*Boardroom 1, Second Floor*

**10:30-11:45 a.m.** – Keynote Session  
*Ballroom, First Floor*

**Noon-2 p.m.** – Exhibit Hall Open and Attendee Lunch  
*Exhibit Hall A, First Floor*

**Noon-1:45 p.m.** – Practice Section Annual Meetings & Luncheons\*  
*(Pre-registration required) - Meeting Rooms 101/102, 103/104, 201/202 and 203-205*

**2-3:45 p.m.** – NASPA/NMA Self-Care Competition  
*Ballroom, First Floor*

**4-5 p.m.** – Educational Programming  
*First and Second Floors*

**5:30-6:30 p.m.** – MPF Student Social\*  
*(Pre-registration required) Michigan Avenue Concourse, First Floor*

**5:15-6:45 p.m.** – PAC Reception\*  
*(Pre-registration required) Governor's Room, Second Floor*

**7-9 p.m.** – President's Reception  
*Ballroom, First Floor*

## Sunday, April 19

**7-11:15 a.m.** – Convention Registration Open  
*Main Concourse, First Floor*

**7:15-9:15 a.m.** – Convention Attendee Continental Breakfast  
*Ballroom, First Floor*

**7:30-8:15 a.m.** – LADC Breakfast  
*Meeting Rooms 201/202, Second Floor*

**8:30-9:30 a.m.** – Advocacy Town Hall  
*Ballroom, First Floor*

**9:45 a.m.-Noon** – Educational Programming  
*Second Floor*

**9:45 a.m.-12:45 p.m.** – MPA House of Delegates  
*Ballroom, First Floor*

**Convention Adjourns**

\*Limited tickets available for these events. Visit the registration desk for more information on purchasing tickets.

# Independent Pharmacies Deserve an *Edge.*



Too many independent pharmacies are forced to compete without the purchasing power and support they need to thrive. With AAPA, you gain the tools, pricing, and insights that help your pharmacy compete, and win.

If your Michigan-based independent pharmacy is looking for stronger margins, better purchasing leverage, and practical tools that help you grow, AAPA delivers the **competitive edge you need.**

#### **BENEFITS:**

- ✓ **Unlock** aggressive cost of goods designed for independent pharmacy success
- ✓ **Gain** access to tools, analytics, and programs that help improve pharmacy profitability
- ✓ **Join** a network built to support growth, innovation, and stronger pharmacy performance

Simply keeping up isn't good enough – your pharmacy deserves to move ahead.

***Find AAPA. Discover your Competitive Edge.***



EXCLUSIVE PREFERRED INDEPENDENT PHARMACY GPO



Co-exhibiting

**INDEPENDENT  
PHARMACY  
COOPERATIVE**

**AAPARX.com**

# GENERAL INFORMATION

## Convention Goals

In the past, the Michigan Pharmacists Association (MPA) has adapted to meet the demands and limitations of public health crises and at the same time, continued to deliver an engaging, high-quality experience for pharmacy professionals throughout Michigan and beyond. MPA is excited for its first year in Lansing! MPA's goals for the Annual Convention & Exposition include the following:

- Provide quality continuing education programs, focusing on the latest treatment options and hottest issues in pharmacy.
- Offer various networking options for attendees.
- Facilitate opportunities for attendees to discuss the outlook of pharmacy.
- Celebrate the future of pharmacy by honoring Michigan's pharmacy leaders.
- Provide activities for attendees to continue their professional development.

## Target Audience

Programs at the Annual Convention & Exposition were planned to meet the needs of pharmacists, residents, pharmacy technicians and student pharmacists in a variety of practice settings, as well as those in the pharmaceutical industry and academia.

## Cancellation Policy

Cancellations after April 3, 2026, no-shows or changes made onsite to registrations will not be refunded. Refunds will not be given for inclement weather, nor will refunds be given due to registration errors made by the participant.

## Parking at the Lansing Center

There are several parking lots around the Lansing Center that provide easy access:

North Grand Parking Structure, 219. N Grand Ave.: Adjacent to the Doubletree on Grand Avenue, the North Grand Structure features 960 spaces. Direct Lansing Center and Doubletree access is available via the pedestrian skybridge across Grand Avenue and the Grand River.

Lansing Center Lot 21, entrance off Riverfront Drive: Across from Lansing Shuffle, total of 66 spaces. Serves the Lansing Center, Jackson Field, Lansing Shuffle and other downtown businesses.

Lansing Center Lot 37, entrance off Riverfront Drive: Adjacent to Lot 21, total of 145 spaces. Serves the Lansing Center, Jackson Field, Lansing Shuffle and other downtown businesses.

Lansing Center Lot 19, entrance off Museum Drive: Located underneath the Lansing Center, total of 66 spaces. Also accessible via Riverfront Drive.

Lansing Center Lot 20, entrance off Museum Drive: Underneath Lansing Center, adjacent to lot 19. Total of 90 spaces. Also accessible via Riverfront Drive.

## Program Restrictions

Children under 18 years of age will not be allowed in the convention spaces due to liability issues. All guests in the MPA convention space must be registered for the convention and be wearing their registration badge. If you wish to bring a guest with you into the convention space, that guest must be registered and have an attendee badge.

If you register a guest, you are confirming your guest will not claim CE credit.

## Distribution of Registrant Contact Information

As a registrant of the MPA Annual Convention, your name and email address may be distributed to key partners supporting the Convention. By registering, you acknowledge that your information will be provided unless you opt out in your Member Compass from marketing emails. If you were previously solicited to purchase an attendee list from an unauthorized vendor, please be aware these companies are not affiliated with MPA, nor has MPA provided them with attendee contact information.

## Information Hub

For assistance at the Convention, please stop by the MPA Registration Desk in the Main Concourse.

## Disclosure

Individuals responsible for planning ACE continuing pharmacy education activities have no financial relationships with ineligible companies to disclose. At least one anonymous peer reviewer was used as part of content validation and conflict resolution in six cases where a financial disclosure was identified by a speaker. The peer reviewer has no financial relationships or commercial interests to disclose.

## Continuing Education Accreditation

The profession of pharmacy has moved in a direction that focuses on continuous professional development (CPD) for pharmacists and pharmacy technicians. MPA plays a critical role in CPD and aims to provide continuing education programs that support the continued development of pharmacy professionals and enhance competency. In an effort to assist you in targeting programs that will enhance your professional development, these activities are accredited through the Accreditation Council for Pharmacy Education (ACPE) for pharmacist and pharmacy technician continuing education credit.

The Michigan Pharmacists Association is accredited by the Accreditation Council for Pharmacy Education as a provider of continuing pharmacy education.



Individuals have the opportunity to earn up to 16 hours of LIVE continuing pharmacy education (CPE) credit throughout the weekend. Educational activities are structured to meet knowledge- and application-based educational needs. A knowledge-based activity acquires factual knowledge. An application-based activity applies

# GENERAL INFORMATION

to information learned in the timeframe allotted. Information in knowledge- and application-type activities is based on evidence as accepted in the literature by the health care professions. CPE credit will be earned based on participation in individually accredited activities. Attendance and participation are required before obtaining CPE credit. **Any individual who is more than 15 minutes late to an activity or leaves an activity early will not be granted CPE credit.** This procedure will be strictly enforced, so please plan accordingly.

CPE Monitor is a national, collaborative effort by ACPE and the National Association of Boards of Pharmacy (NABP) to provide an electronic system for pharmacists and pharmacy technicians to track their completed CPE credits. To obtain your e-profile ID, visit [nabp.pharmacy/programs/cpe-monitor/](http://nabp.pharmacy/programs/cpe-monitor/). Pharmacists and pharmacy technicians earning continuing education credit, while meeting all requirements, will be able to view a comprehensive list of the ACPE-accredited activities they have taken in their CPE Monitor account.

MPA reserves the right to revoke continuing education credit for individuals who have not paid the registration rate in full or to participants who claim to have attended programs on days for which they were not registered. Partial credit will not be awarded.

## Required Continuing Education

Continuing education requirements for licensed Michigan pharmacists and pharmacy technicians are indicated on Page 8.

Look for PAIN, ethics and jurisprudence (E&J), patient safety (Tech PS), controlled substance awareness training (CSA) and implicit bias training (IBT) symbols next to continuing education programs in this brochure that meet education requirements. Additionally, according to state law, both pharmacists and pharmacy technicians must complete a one-time course on identifying victims of human trafficking.

State regulations mandate that pharmacists and pharmacy technicians cannot earn more than 12 hours of CPE credit in a 24-hour period.

## Process to Claim Continuing Education Credit

The ACE is targeted to all pharmacists, pharmacy technicians and student pharmacists.

To receive CPE credit for the live sessions, pharmacists and technicians must attend the entire session, actively participate, complete the speaker evaluation(s) in MPA's online LecturePanda (LP) platform, and indicate sessions attended within 60 days of the Conference.

Meeting participants can use LP for each session to access full accreditation information, download and view presentation slides and handouts, claim CE credit and evaluate sessions.

As always, your NABP number and date of birth is required for pharmacists and technicians to register and claim CE credit.

In order to process CE credits, participants must provide the correct NABP e-Profile ID number along with their birth month and day (MMDD format). The NABP e-Profile ID number is a six to eight-digit number, and it is not your license number, NPI number or store NABP number. If you need to verify your number or have not yet registered for one, please visit [www.MyCPEMonitor.net](http://www.MyCPEMonitor.net).

CPE Statements of Credit can be printed from the CPE Monitor. Learning objectives for each of the CPE activities can be found listed with each activity. It is your responsibility to check the CPE Monitor within the 60 days' timeframe to confirm that all of your CEs have been uploaded.



# GENERAL INFORMATION

## CE Requirements for Pharmacists

### Total Requirements:

- 30 hours required per renewal
- Maximum of 12 CE hours in any 24-hour period.

### Required Per Renewal:

- Live CE: 10 hours
- Pain and Symptom Management: 1 hour
- Ethics and Jurisprudence: 1 hour

### Special Requirements:

- Human Trafficking: One-time course
- Opioid and Other Controlled Substances Awareness Training: 1 hour if renewing a controlled substance license
- Implicit Bias Training: 2 hours (counts toward CE only if accredited as such)

## CE Requirements for Pharmacy Technicians

### Total Requirements:

- 20 hours required per renewal
- Maximum of 12 CE hours in any 24-hour period.

### Required Per Renewal:

- Live CE: 5 hours
- Pain and Symptom Management: 1 hour
- Ethics and Jurisprudence: 1 hour
- Patient Safety: 1 hour

### Special Requirements:

- Human Trafficking: One-time course
- Implicit Bias Training: 2 hours (counts toward CE only if accredited as such)

## Program Claim Codes

When completing evaluations and posttests, you will be required to enter a "claim code" unique to each program. Be sure to listen at the end of each program to receive that program's claim code. **Program claim codes will not be provided to participants after participants are released from the program.** It is recommended that you keep track of program claim codes by recording them as they are provided during sessions.



**Important tip:**  
Keep track of your session attendance codes. You will need them to receive CPE credit

# THANK YOU TO OUR SPONSORS

## PLATINUM



## SILVER



## GOLD



## LANYARD & TOTE BAG SPONSOR



## BRONZE



# PRODUCT THEATERS

## YOU DON'T WANT TO MISS!

Friday, April 17 at 11:45 a.m.

Grab your lunch and head over to take part in product showcases and learning opportunities from five different sponsors Friday, April 17. Sessions will be conducted by:



**Aldosterone as an Underlying Driver of Hypertension & Adverse Cardiovascular & Kidney Outcomes**

Presenter: Claudia Hanni, Pharm.D., BCPS

**201/202**

**Johnson & Johnson  
Innovative Medicine**

**The Innovative Science Behind Targeted Oral Peptides in Moderate to Severe Plaque Psoriasis**

Presenter: Brent M. Boyce, MD

**103/104**



**Recognizing and Addressing Pneumococcal Disease in Adults 50+ in the Pharmacy Setting**

Presenter: Chad J. Kodiak, RPh, Pharm.D.

**101/102**



**novo nordisk®**

**Disrupt the Default: Expand Options for Individualized Obesity Care With Wegovy**

Presenter: Nathan Sailor, doctor of osteopathy, family medicine

**Ballroom**



**Discover Zepbound (tirzepatide) Injection**

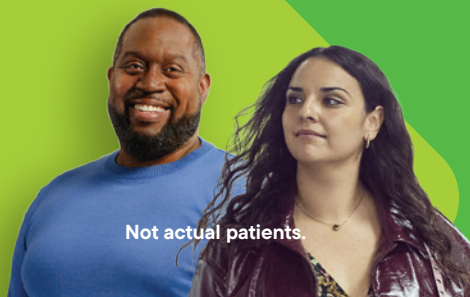
Speaker: Mary Margaret Dagen, MD, DABFM, DABOM, CCMS, DABLM

**203-205**

***Pre-registration is not required to attend.***

# YOU'RE INVITED!

## DISCOVER ZEPBOUND® (tirzepatide) INJECTION at the MPA 2026 Annual Convention & Exposition



**zepbound**®  
(tirzepatide) injection 0.5 mL or 0.6 mL  
2.5 mg | 5 mg | 7.5 mg | 10 mg | 12.5 mg | 15 mg  
A Lilly Medicine

## JOIN US TO LEARN MORE ABOUT ZEPBOUND

Discover Zepbound, the first and only dual glucose-dependent insulinotropic polypeptide (GIP) and glucagon-like peptide-1 (GLP-1) receptor agonist approved for the treatment of obesity and moderate-to-severe OSA in adults with obesity, in combination with a reduced-calorie diet and increased physical activity.<sup>1</sup>

This educational program will review key clinical efficacy and safety data from the SURMOUNT clinical trial program and provide practical insights for starting and managing Zepbound in appropriate adult patients.

**Friday, April 17, 2026**  
**11:45 AM-12:45 PM ET**  
**Room 203, Floor 2**

### SPEAKER

**Mary Margaret Dagen, MD, DABFM, DABOM, CCMS, DABLM**

Physician and Bariatric Medicine Site Lead, Corewell Health Medical Group Grand Rapids, Michigan



**Please visit us at booth #206/208, Exhibit Hall A, Floor 1**

#### Indications

Zepbound is indicated in combination with a reduced-calorie diet and increased physical activity

- to reduce excess body weight and maintain weight reduction long term in adults with obesity or adults with overweight in the presence of at least one weight-related comorbid condition.
- to treat moderate-to-severe obstructive sleep apnea (OSA) in adults with obesity.

#### Limitations of Use

Zepbound contains tirzepatide. Coadministration with other tirzepatide-containing products or with any glucagon-like peptide-1 (GLP-1) receptor agonist is not recommended.

#### Select Important Safety Information<sup>1</sup>

##### WARNING: RISK OF THYROID C-CELL TUMORS

In rats, tirzepatide causes dose-dependent and treatment-duration-dependent thyroid C-cell tumors at clinically relevant exposures. It is unknown whether Zepbound causes thyroid C-cell tumors, including medullary thyroid carcinoma (MTC), in humans as human relevance of tirzepatide-induced rodent thyroid C-cell tumors has not been determined.

Zepbound is contraindicated in patients with a personal or family history of MTC or in patients with Multiple Endocrine Neoplasia syndrome type 2 (MEN 2). Counsel patients regarding the potential risk for MTC with the use of Zepbound and inform them of symptoms of thyroid tumors (e.g., a mass in the neck, dysphagia, dyspnea, persistent hoarseness). Routine monitoring of serum calcitonin or using thyroid ultrasound is of uncertain value for early detection of MTC in patients treated with Zepbound.

**Contraindications:** Zepbound is contraindicated in patients with a personal or family history of MTC or in patients with MEN 2, and in patients with known serious hypersensitivity to tirzepatide or any of the excipients in Zepbound. Serious hypersensitivity reactions including anaphylaxis and angioedema have been reported with tirzepatide.

**Risk of Thyroid C-cell Tumors:** Counsel patients regarding the potential risk for MTC with the use of Zepbound and inform them of symptoms of thyroid tumors (e.g., a mass in the neck, dysphagia, dyspnea, persistent hoarseness). Routine monitoring of serum calcitonin or using thyroid ultrasound is of uncertain value for early detection of MTC in patients treated with Zepbound. Such monitoring may increase the risk of unnecessary procedures, due to the low test specificity for serum calcitonin and a high background incidence of thyroid disease. Significantly elevated serum calcitonin values may indicate MTC and patients with MTC usually have calcitonin values >50 ng/L. If serum calcitonin is measured and found to be elevated, the patient should be further evaluated. Patients with thyroid nodules noted on physical examination or neck imaging should also be further evaluated.

**Severe Gastrointestinal Adverse Reactions:** Use of Zepbound has been associated with gastrointestinal adverse reactions, sometimes severe. In a pool of two Zepbound clinical trials (SURMOUNT-1 and SURMOUNT-2), severe gastrointestinal adverse reactions were reported more frequently among patients receiving Zepbound (5 mg 1.7%, 10 mg 2.5%, 15 mg 3.1%) than placebo (1.0%).

Similar rates of severe gastrointestinal adverse reactions were observed in Zepbound clinical trials for weight reduction and in Zepbound clinical trials for obstructive sleep apnea (OSA). Zepbound is not recommended in patients with severe gastroparesis.

#### Acute Kidney Injury Due to Volume Depletion:

There have been postmarketing reports of acute kidney injury, in some cases requiring hemodialysis, in patients treated with GLP-1 receptor agonists, or Zepbound. The majority of the reported events occurred in patients who experienced gastrointestinal adverse reactions leading to dehydration such as nausea, vomiting, or diarrhea. Monitor renal function in patients reporting adverse reactions to Zepbound that could lead to volume depletion, especially during dosage initiation and escalation of Zepbound.

**Acute Gallbladder Disease:** Treatment with Zepbound and GLP-1 receptor agonists is associated with an increased occurrence of acute gallbladder disease.

In a pool of two clinical trials of Zepbound (SURMOUNT-1 and SURMOUNT-2), cholelithiasis was reported in 11% of Zepbound-treated patients and 10% of placebo-treated patients; cholecystitis was reported in 0.7% of Zepbound-treated patients and 0.2% of placebo-treated patients; and cholecystectomy was reported in 0.2% of Zepbound-treated patients and no placebo-treated patients. Acute gallbladder events were associated with weight reduction. Similar rates of cholelithiasis were reported in Zepbound clinical trials for weight reduction and in Zepbound trials for OSA. If cholecystitis is suspected, gallbladder diagnostic studies and appropriate clinical follow-up are indicated.

**Acute Pancreatitis:** Acute pancreatitis, including fatal and non-fatal hemorrhagic or necrotizing pancreatitis, has been observed in patients treated with GLP-1 receptor agonists, or Zepbound. After initiation of Zepbound, observe patients carefully for signs and symptoms of pancreatitis (including persistent severe abdominal pain, sometimes radiating to the back, and which may or may not be accompanied by vomiting). If pancreatitis is suspected, discontinue Zepbound and initiate appropriate management.

**Hypersensitivity Reactions:** There have been postmarketing reports of serious hypersensitivity reactions (e.g., anaphylaxis, angioedema) in patients treated with tirzepatide. In a pool of two Zepbound clinical trials (SURMOUNT-1 and SURMOUNT-2), 0.1% of Zepbound-treated patients had severe hypersensitivity reactions compared to no placebo-treated patients. Similar rates of severe hypersensitivity reactions were observed in Zepbound clinical trials for weight reduction and in Zepbound trials for OSA. If hypersensitivity reactions occur, advise patients to promptly seek medical attention and discontinue use of Zepbound. Do not use in patients with a previous serious hypersensitivity reaction to tirzepatide or any of the excipients in Zepbound. Use caution in patients with a history of angioedema or anaphylaxis with a GLP-1 receptor agonist because it is unknown if such patients will be predisposed to these reactions with Zepbound.

**Hypoglycemia:** Zepbound lowers blood glucose and can cause hypoglycemia. In a trial of patients with type 2 diabetes mellitus and BMI  $\geq 27$  kg/m<sup>2</sup> (Study 2), hypoglycemia (plasma glucose <54 mg/dL) was reported in 4.2% of Zepbound-treated patients versus 1.3% of placebo-treated patients. In this trial, patients taking Zepbound in combination with an insulin secretagogue (e.g., sulfonylurea) had increased risk of hypoglycemia (10.3%) compared to Zepbound-treated patients not taking a sulfonylurea (2.1%). There is also increased risk of hypoglycemia in patients treated with tirzepatide in combination with insulin. Hypoglycemia has also been associated with Zepbound and GLP-1 receptor agonists in adults without type 2 diabetes mellitus. Inform patients of the risk of hypoglycemia and educate them on the signs

and symptoms of hypoglycemia. In patients with diabetes mellitus, monitor blood glucose prior to starting Zepbound and during Zepbound treatment. The risk of hypoglycemia may be lowered by a reduction in the dose of insulin or sulfonylurea (or other concomitantly administered insulin secretagogue).

**Diabetic Retinopathy Complications in Patients with Type 2 Diabetes Mellitus:** Rapid improvement in glucose control has been associated with a temporary worsening of diabetic retinopathy. Tirzepatide has not been studied in patients with non-proliferative diabetic retinopathy requiring acute therapy, proliferative diabetic retinopathy, or diabetic macular edema. Patients with a history of diabetic retinopathy should be monitored for progression of diabetic retinopathy.

**Suicidal Behavior and Ideation:** Suicidal behavior and ideation have been reported in clinical trials with other weight management products. Monitor patients treated with Zepbound for the emergence or worsening of depression, suicidal thoughts or behaviors, and/or any unusual changes in mood or behavior. Discontinue Zepbound in patients who experience suicidal thoughts or behaviors. Avoid Zepbound in patients with a history of suicidal attempts or active suicidal ideation.

**Pulmonary Aspiration During General Anesthesia or Deep Sedation:** Zepbound delays gastric emptying. There have been rare postmarketing reports of pulmonary aspiration in patients receiving GLP-1 receptor agonists undergoing elective surgeries or procedures requiring general anesthesia or deep sedation who had residual gastric contents despite reported adherence to preoperative fasting recommendations. Available data are insufficient to inform recommendations to mitigate the risk of pulmonary aspiration during general anesthesia or deep sedation in patients taking Zepbound, including when modifying preoperative fasting recommendations or temporarily discontinuing Zepbound could reduce the incidence of retained gastric contents. Instruct patients to inform healthcare providers prior to any planned surgeries or procedures if they are taking Zepbound.

**Never Share a Zepbound® KwikPen® Between Patients:** Never share Zepbound KwikPen between patients, even if the pen needle is changed. Sharing poses a risk for transmission of blood-borne pathogens.

**Most Common Adverse Reactions:** The most common adverse reactions reported in  $\geq 5\%$  of patients treated with Zepbound are nausea, diarrhea, vomiting, constipation, abdominal pain, dyspepsia, injection site reactions, fatigue, hypersensitivity reactions, eruption, hair loss, and gastroesophageal reflux disease.

**Drug Interactions:** Zepbound lowers blood glucose. When initiating Zepbound, consider reducing the dose of concomitantly administered insulin or insulin secretagogues (e.g., sulfonylureas) to reduce the risk of hypoglycemia. Zepbound delays gastric emptying and thereby has the potential to impact the absorption of concomitantly administered oral medications. Caution should be exercised when oral medications are concomitantly administered with Zepbound. Monitor patients on oral medications dependent on threshold concentrations for efficacy and those with a narrow therapeutic index (e.g., warfarin) when concomitantly administered with Zepbound.

**Pregnancy:** Advise pregnant patients that weight loss is not recommended during pregnancy and to discontinue Zepbound when a pregnancy is recognized. Available data with tirzepatide in pregnant patients are insufficient to evaluate for a drug-related risk of major birth defects, miscarriage, or other adverse maternal or fetal outcomes. Based on animal reproduction studies, there may be risks to the fetus from exposure to tirzepatide during pregnancy. There will be a pregnancy exposure registry that monitors

pregnancy outcomes in women exposed to Zepbound (tirzepatide) during pregnancy.

Pregnant patients exposed to Zepbound and healthcare providers are encouraged to contact Eli Lilly and Company at 1-800-LillyRx (1-800-545-5979).

**Lactation:** In a single-dose clinical lactation study, the concentration of tirzepatide in breast milk was found to be either undetectable or low compared to the maternal administered dose. There are no available data on the effects of tirzepatide on the breastfed infant or on milk production. The developmental and health benefits of breastfeeding should be considered along with the mother's clinical need for Zepbound and any potential adverse effects on the breastfed infant from Zepbound or from the underlying maternal condition.

**Females and Males of Reproductive Potential:** Use of Zepbound may reduce the efficacy of oral hormonal contraceptives due to delayed gastric emptying. This delay is largest after the first dose and diminishes over time. Advise patients using oral hormonal contraceptives to switch to a non-oral contraceptive method, or add a barrier method of contraception, for 4 weeks after initiation with Zepbound and for 4 weeks after each dose escalation.

**Pediatric Use:** The safety and effectiveness of Zepbound have not been established in pediatric patients.

Zepbound is available as a 2.5 mg, 5 mg, 7.5 mg, 10 mg, 12.5 mg and 15 mg injection.

**Please see accompanying Prescribing Information, including Boxed Warning about possible thyroid tumors, including thyroid cancer, and Medication Guide.**

**Please see Instructions for Use.**

ZP HCP ISI 21JAN2026

#### Reference

1. Zepbound. Prescribing Information. Lilly USA, LLC.

As a result of enacted state and federal legislation, if you are a prescriber or other licensed healthcare professional with an active license from NJ, MA, MN, and/or VT, a Veterans Affairs employee, and/or a state government employee, you may be restricted from accepting industry-provided food/beverage and/or educational item(s). Please consult your state or federal regulations or ethics laws. This program is intended only for invited healthcare professionals (HCPs) or other appropriate personnel for whom the information that is being presented will be relative to their practice. We regret that spouses or other guests cannot be accommodated. In accordance with Lilly Policy and anticipation of Updated PhRMA Code on Interactions with HCPs, Lilly will not provide or pay for alcohol at this educational event.



For more information, please visit [www.zepbound.lilly.com/hcp](http://www.zepbound.lilly.com/hcp)

Zepbound®, its delivery device base, and KwikPen® are registered trademarks owned or licensed by Eli Lilly and Company, its subsidiaries, or affiliates. Other product/company names mentioned herein are the trademarks of their respective owners.

CMAT-10285-02/2026 © Lilly USA, LLC 2026. All rights reserved.



# you're invited.

Join us for an upcoming event.

**Disrupt the Default: Expand Options for Individualized Obesity Care  
With Wegovy<sup>®</sup>**

**Presenter: NATHAN SAILOR, Doctor of Osteopathy, Family Medicine**



**Friday, April 17, 2026**  
**11:45 AM-12:45 PM**  
**Eastern Time**



**LANSING CENTER**



**Host:**  
**JASON COLLINS**



**333 E MICHIGAN AVE**  
**LANSING**  
**MI**  
**48933**

To RSVP or if you have questions about this program, please call **JASON COLLINS** at **+1 616-213-4346** or email [jazc@novonordisk.com](mailto:jazc@novonordisk.com)

## Indications and Usage

Wegovy<sup>®</sup> (semaglutide) injection 1.7 mg or 2.4 mg and Wegovy<sup>®</sup> (semaglutide) tablets 25 mg are indicated in combination with a reduced calorie diet and increased physical activity to:

- Reduce the risk of major adverse cardiovascular (CV) events (CV death, non-fatal myocardial infarction, or non-fatal stroke) in adults with established CV disease and either obesity or overweight
- Reduce excess body weight and maintain weight reduction long term in adults with obesity or overweight in the presence of at least one weight-related comorbidity

Wegovy (semaglutide) injection 1.7 mg or 2.4 mg is indicated in combination with a reduced calorie diet and increased physical activity to reduce excess body weight and maintain weight reduction long term in pediatric patients aged 12 and older with obesity

**Limitations of Use:** Concomitant use of Wegovy<sup>®</sup> tablets or Wegovy<sup>®</sup> injection with other semaglutide-containing products or with any GLP-1 receptor agonist is not recommended

## Important Safety Information

### WARNING: RISK OF THYROID C-CELL TUMORS

- In rodents, semaglutide causes dose-dependent and treatment-duration-dependent thyroid C-cell tumors at clinically relevant exposures. It is unknown whether Wegovy<sup>®</sup> causes thyroid C-cell tumors, including medullary thyroid carcinoma (MTC), in humans as human relevance of semaglutide-induced rodent thyroid C-cell tumors has not been determined
- Wegovy<sup>®</sup> is contraindicated in patients with a personal or family history of MTC or in patients with Multiple Endocrine Neoplasia syndrome type 2 (MEN 2). Counsel patients regarding the potential risk for MTC with the use of Wegovy<sup>®</sup> and inform them of symptoms of thyroid tumors (e.g. a mass in the neck, dysphagia, dyspnea, persistent hoarseness). Routine monitoring of serum calcitonin or using thyroid ultrasound is of uncertain value for early detection of MTC in patients treated with Wegovy<sup>®</sup>

## Contraindications

- Wegovy<sup>®</sup> is contraindicated in patients with a personal or family history of MTC or in patients with MEN 2, and in patients with a prior serious hypersensitivity reaction to semaglutide or to any of the excipients in Wegovy<sup>®</sup>. Serious hypersensitivity reactions, including anaphylaxis and angioedema have been reported with Wegovy<sup>®</sup>

**Please see additional Important Safety Information on the following pages.**

**Please see accompanying Prescribing Information, including Boxed Warning.**

## Important Safety Information

### Warnings and Precautions

- **Risk of Thyroid C-Cell Tumors:** Patients should be further evaluated if serum calcitonin is measured and found to be elevated or thyroid nodules are noted on physical examination or neck imaging
- **Acute Pancreatitis:** Acute pancreatitis, including fatal and non-fatal hemorrhagic or necrotizing pancreatitis, has been observed in patients treated with GLP-1 receptor agonists, including Wegovy<sup>®</sup>. Observe patients carefully for signs and symptoms of acute pancreatitis, which may include persistent or severe abdominal pain (sometimes radiating to the back), and which may or may not be accompanied by nausea, or vomiting. If pancreatitis is suspected, discontinue Wegovy<sup>®</sup> and initiate appropriate management
- **Acute Gallbladder Disease:** Treatment with Wegovy<sup>®</sup> is associated with an increased occurrence of cholelithiasis and cholecystitis. The incidence of cholelithiasis and cholecystitis was higher in Wegovy<sup>®</sup> injection-treated pediatric patients aged  $\geq 12$  years than in Wegovy<sup>®</sup> injection-treated adults. In clinical trials in adult patients, cholelithiasis was reported by 1.6% of Wegovy<sup>®</sup> injection-treated patients and 0.7% of placebo treated patients, and by 2.5% of Wegovy<sup>®</sup> tablet-treated patients and 1% of placebo treated patients. Cholecystitis was reported by 0.6% of Wegovy<sup>®</sup> injection-treated adult patients and 0.2% of placebo treated patients. In a clinical trial in pediatric patients aged  $\geq 12$  years, cholelithiasis was reported by 3.8% of Wegovy<sup>®</sup> injection-treated patients and 0% placebo treated patients. Cholecystitis was reported by 0.8% of Wegovy<sup>®</sup> injection-treated pediatric patients and 0% placebo treated patients. Substantial or rapid weight loss can increase the risk of cholelithiasis; however, the incidence of acute gallbladder disease was greater in Wegovy<sup>®</sup> patients than in placebo patients, even after accounting for the degree of weight loss. If cholelithiasis is suspected, gallbladder studies and appropriate clinical follow-up are indicated
- **Hypoglycemia:** Wegovy<sup>®</sup> lowers blood glucose and can cause hypoglycemia. In a trial of Wegovy<sup>®</sup> injection in adult patients with type 2 diabetes (T2D) and a BMI  $\geq 27$  kg/m<sup>2</sup>, hypoglycemia was reported in more patients treated with Wegovy<sup>®</sup> versus placebo. In glycemic control clinical trials, the risk of hypoglycemia was increased when semaglutide injection or tablet was used concomitantly with insulin or an insulin secretagogue (e.g., sulfonylurea). Patients with diabetes taking Wegovy<sup>®</sup> with an insulin or insulin secretagogue may have an increased risk of hypoglycemia, including severe hypoglycemia. The use of Wegovy<sup>®</sup> in patients with type 1 diabetes or in combination with insulin has not been evaluated. Inform patients of the risk of hypoglycemia and educate them on the signs and symptoms. Monitor blood glucose in patients with diabetes
- **Acute Kidney Injury Due to Volume Depletion:** There have been postmarketing reports of acute kidney injury, in some cases requiring hemodialysis, in patients treated with semaglutide. The majority of the reported events occurred in patients who experienced gastrointestinal reactions leading to dehydration such as nausea, vomiting, or diarrhea. Monitor renal function in patients reporting adverse reactions to Wegovy<sup>®</sup> that could lead to volume depletion, especially during initiation and escalation of Wegovy<sup>®</sup>
- **Severe Gastrointestinal (GI) Adverse Reactions:** Use of Wegovy<sup>®</sup> has been associated with GI adverse reactions, sometimes severe. In adult clinical trials, severe GI adverse reactions were reported more frequently among patients receiving Wegovy<sup>®</sup> than placebo. Severe GI adverse reactions were reported in 4.1% and 0.9% of Wegovy<sup>®</sup>-injection treated and placebo treated patients, respectively, and in 2% of Wegovy<sup>®</sup> tablet-treated and 0% of placebo treated patients, respectively. Severe GI adverse reactions have also been reported postmarketing with GLP-1 receptor agonists. Wegovy<sup>®</sup> is not recommended in patients with severe gastroparesis
- **Hypersensitivity Reactions:** Serious hypersensitivity reactions (e.g., anaphylaxis, angioedema) have been reported with Wegovy<sup>®</sup>. If hypersensitivity reactions occur, discontinue use of Wegovy<sup>®</sup>, treat promptly per standard of care, and monitor until signs and symptoms resolve. Use caution in a patient with a history of anaphylaxis or angioedema with another GLP-1 receptor agonist
- **Diabetic Retinopathy Complications in Patients with T2D:** In a trial of adult patients with T2D and BMI  $\geq 27$  kg/m<sup>2</sup>, diabetic retinopathy was reported by 4% of Wegovy<sup>®</sup> injection-treated patients and 2.7% of placebo patients. In a glycemic control trial evaluating a dose comparable to the 9 mg dose and the 25 mg semaglutide tablet doses in patients with T2D, 1.3% and 1.9% of patients in the 9 mg and 25 mg semaglutide group, respectively, reported moderate-severe non-proliferative diabetic retinopathy events, and 0% and 0.4% reported proliferative retinopathy events, respectively. Rapid improvement in glucose control has been associated with a temporary worsening of diabetic retinopathy. Patients with a history of diabetic retinopathy should be monitored for progression of diabetic retinopathy
- **Heart Rate Increase:** Mean increases in resting heart rate of 1 to 4 beats per minute (bpm) were observed in Wegovy<sup>®</sup> injection-treated adult patients compared to placebo in clinical trials. More adults treated with Wegovy<sup>®</sup> injection compared with placebo had maximum changes from baseline of 10 to 19 bpm (41% vs 34%) and 20 bpm or more (26% vs 16%). In a clinical trial in pediatric patients aged  $\geq 12$  years with normal baseline heart rate, more patients treated with Wegovy<sup>®</sup> injection compared to placebo had maximum changes in heart rate of 20 bpm or more (54% vs 39%). Findings were similar in a trial with the Wegovy<sup>®</sup> tablets. Monitor heart rate at regular intervals and instruct patients to report palpitations or feelings of a racing heartbeat while at rest. If patients experience a sustained increase in resting heart rate, discontinue Wegovy<sup>®</sup>
- **Pulmonary Aspiration During General Anesthesia or Deep Sedation:** Wegovy<sup>®</sup> delays gastric emptying. There have been rare postmarketing reports of pulmonary aspiration in patients receiving GLP-1 receptor agonists undergoing elective surgeries or procedures requiring general anesthesia or deep sedation who had residual gastric contents despite reported adherence to preoperative fasting recommendations. Instruct patients to inform healthcare providers prior to any planned surgeries or procedures if they are taking Wegovy<sup>®</sup>

### Adverse Reactions

- Most common adverse reactions (incidence  $\geq 5\%$ ) are: nausea, diarrhea, vomiting, constipation, abdominal pain, headache, fatigue, dyspepsia, dizziness, abdominal distention, eructation, hypoglycemia in patients with T2D, flatulence, gastroenteritis, gastroesophageal reflux disease, and nasopharyngitis

**Please see additional Important Safety Information on other pages.**

**Please see accompanying Prescribing Information, including Boxed Warning.**

## Important Safety Information

### Drug Interactions

- When initiating Wegovy<sup>®</sup>, consider reducing the dose of concomitantly administered insulin secretagogues or insulin to reduce the risk of hypoglycemia. The addition of Wegovy<sup>®</sup> in patients treated with insulin has not been evaluated
- Wegovy<sup>®</sup> causes a delay of gastric emptying and has the potential to impact the absorption of concomitantly administered oral medications. Monitor the effects of oral medications concomitantly administered with Wegovy<sup>®</sup>. Consider increased clinical or laboratory monitoring for medications that have a narrow therapeutic index or that require clinical monitoring

### Use in Specific Populations

- **Pregnancy:** May cause fetal harm. When pregnancy is recognized, discontinue Wegovy<sup>®</sup>. Discontinue Wegovy<sup>®</sup> in patients at least 2 months before a planned pregnancy
- **Lactation:** A clinical lactation study reported semaglutide concentrations below the lower limit of quantification in human breast milk. However, salcaprozate sodium (SNAC) and/or its metabolites are present in human milk. Because of the unknown potential for serious adverse reactions in the breastfed infant due to the possible accumulation of SNAC, an absorption enhancer for Wegovy<sup>®</sup> tablets, and because there are alternative formulations of semaglutide that do not contain SNAC that can be used during lactation, advise patients that breastfeeding is not recommended during treatment with Wegovy<sup>®</sup> tablets
- **Pediatric:** Adverse reactions with Wegovy<sup>®</sup> injection-treated pediatric patients ≥12 years with obesity were similar to those reported in adults. Pediatric patients ≥12 years treated with Wegovy<sup>®</sup> injection had greater incidences of cholelithiasis, cholecystitis, hypotension, rash, and urticaria compared to adults treated with Wegovy<sup>®</sup>. There are insufficient data in pediatric patients with T2D treated with Wegovy<sup>®</sup> injection for obesity to determine if there is an increased risk of hypoglycemia with Wegovy<sup>®</sup> injection treatment similar to that reported in adults.  
The safety and effectiveness of Wegovy<sup>®</sup> injection have not been established in pediatric patients to reduce the risk of major adverse CV events or to reduce excess body weight and maintain weight reduction long term in those <12 years.  
The safety and effectiveness of Wegovy<sup>®</sup> tablets have not been established in pediatric patients
- **Geriatric:** In the CV outcomes trial, patients ≥75 years reported more hip and pelvis fractures on Wegovy<sup>®</sup> injection than placebo. Patients ≥75 years (Wegovy<sup>®</sup> injection and placebo) reported more serious adverse reactions overall compared to younger adult patients
- **Type 2 Diabetes:** Wegovy<sup>®</sup> tablets have not been studied for weight reduction in adults with T2D and obesity or overweight. Administration of Wegovy<sup>®</sup> injection resulted in less weight reduction in patients with T2D and obesity or overweight compared to those without T2D and obesity or overweight

**Please see additional Important Safety Information on previous pages.**

**Please see accompanying Prescribing Information, including Boxed Warning.**

For additional promotional information or patient resources, visit [wegovypro.com](http://wegovypro.com).

Novo Nordisk is subject to federal and state laws that require the disclosure of items of value, such as meals, provided to certain health care professionals. By participating in this activity, the value of the meal will be reported as required, and that information may be publicly available. If you prefer to attend the program and not accept a meal, there is a box to check at the event sign-in, indicating that you did not accept a meal.

Novo Nordisk will report all transfers of value, including meals, as required by law. Please refrain from consuming any meals available at this event if you are a health care provider licensed in a state that prohibits, or applies limits to, such interactions.

In Accordance with the PhRMA Code on Interactions with Healthcare Professionals, Novo Nordisk will not provide alcohol at its programs and attendance at this program is limited to healthcare professionals with an educational need to receive the information. Additionally, attendance by guests or spouses is not appropriate and cannot be accommodated.

We appreciate your understanding and apologize for any inconvenience this may cause. Please contact NNI Ethics & Compliance with any questions at [NNIComplianceAssist@novonordisk.com](mailto:NNIComplianceAssist@novonordisk.com).



Wegovy<sup>®</sup> is a registered trademark of Novo Nordisk A/S.  
Novo Nordisk is a registered trademark of Novo Nordisk A/S.  
© 2026 Novo Nordisk Printed in the U.S.A.  
US26SEMO00458 March 2026

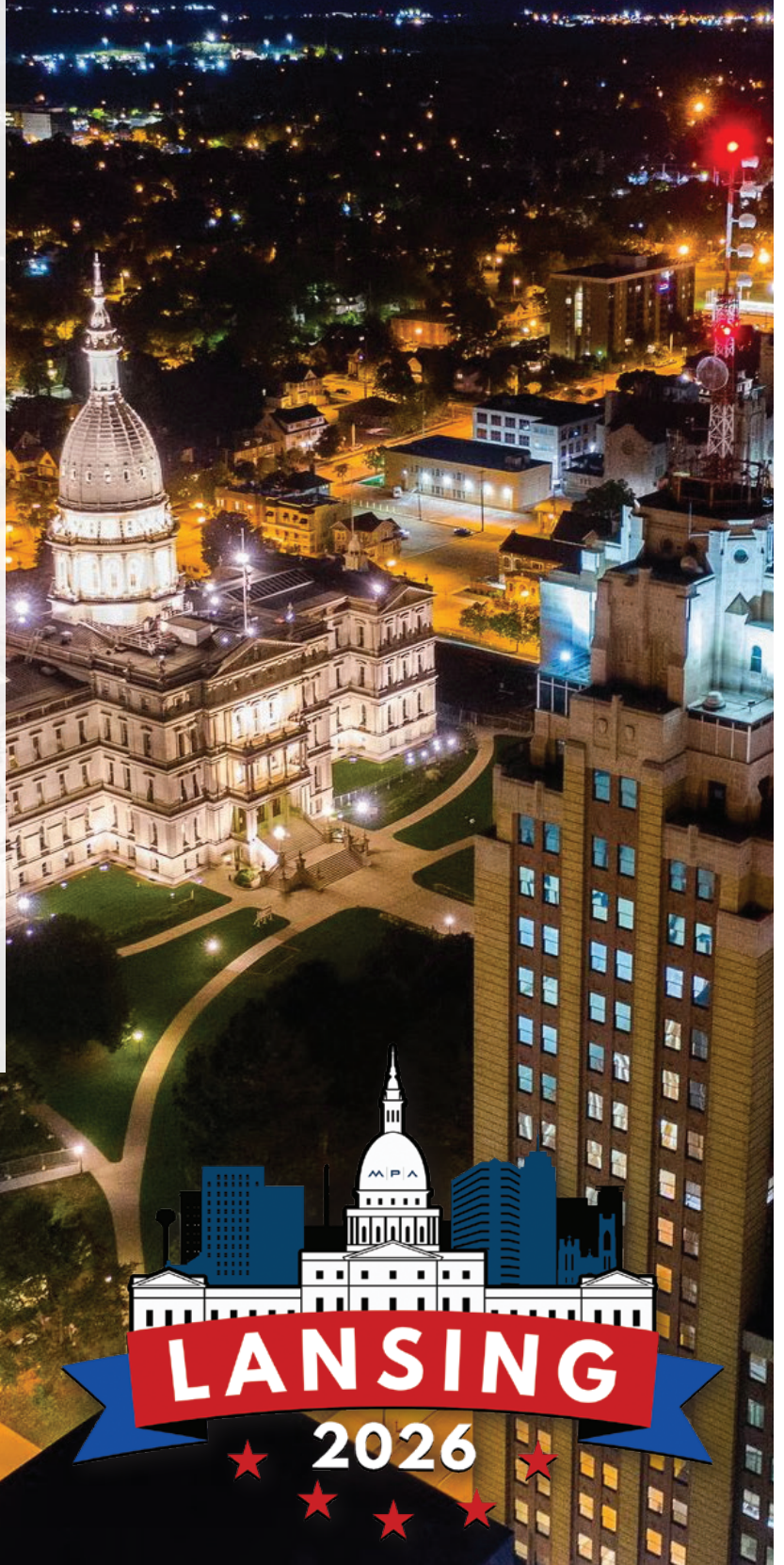
# PLAY THE MPA PASSPORT GAME

**Meet and speak with exhibitors and you could go home a winner!**

**Playing the MPA Passport Game is easy!**

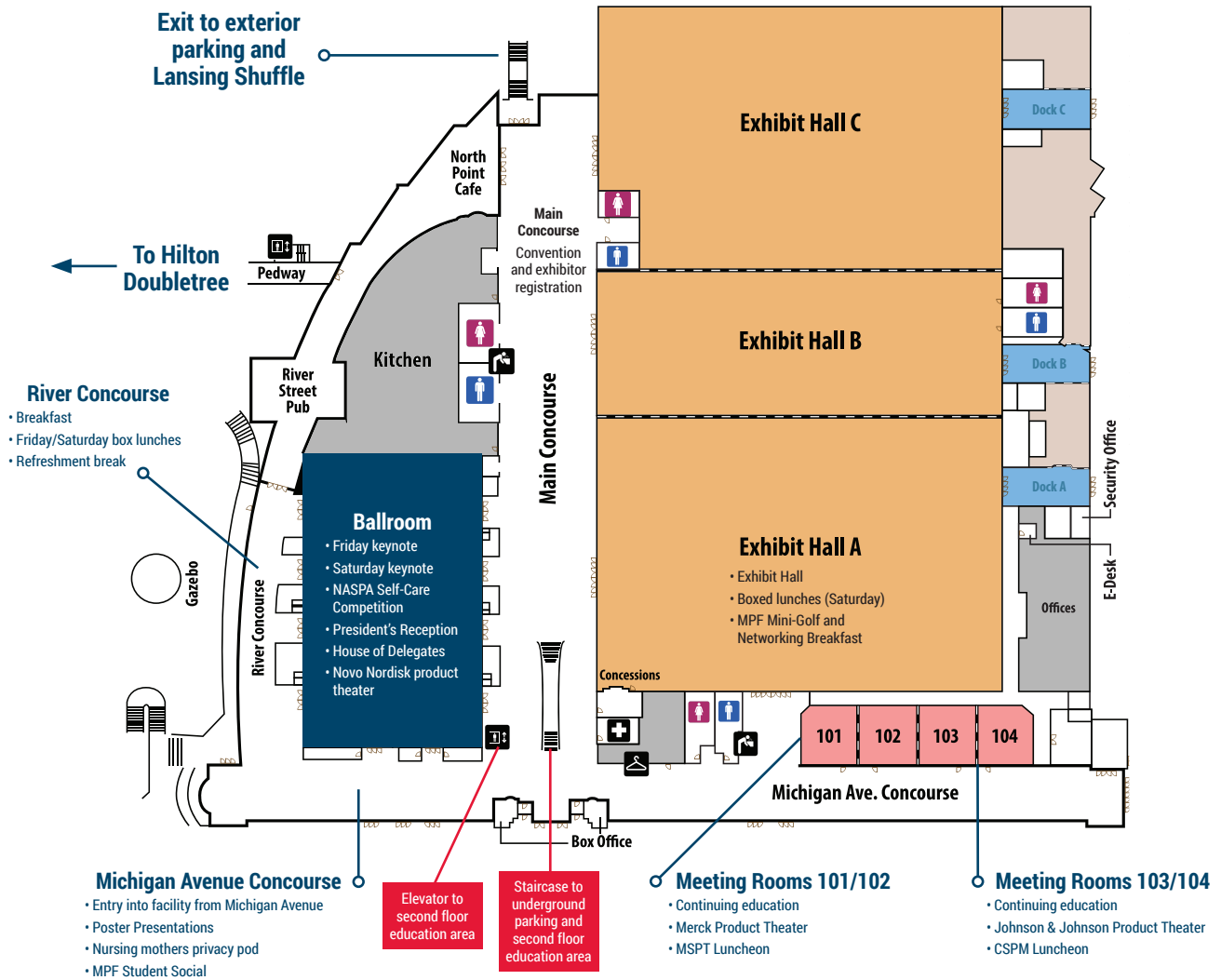
1. Use the passport card you received at registration to participate. If you lose your game card, pick up a new one at the registration desk.
2. During the Exhibit Hall hours, visit exhibitors' booths to learn about their products and services and get your passport stamped by them. All game cards must be completely stamped to be entered into the drawing. (Don't forget to fill in your identification information on the card.)
3. The drawing will be held at 1:55 p.m. Saturday, April 18, in the Exhibit Hall. Drop your completely stamped card off at the MPA Membership booth no later than 1:30 p.m. Saturday, April 18, to participate.
4. There will be four (4) winners drawn for prizes, including a \$200 VISA gift card, two (2) \$100 VISA gift cards and a one-year MPA membership.

**GOOD LUCK!**

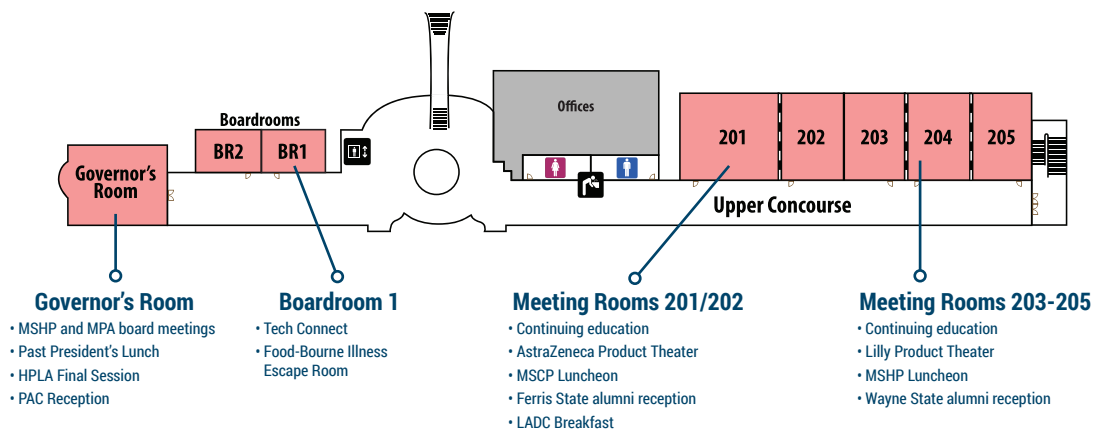


# NAVIGATING THE CONVENTION

## FIRST FLOOR



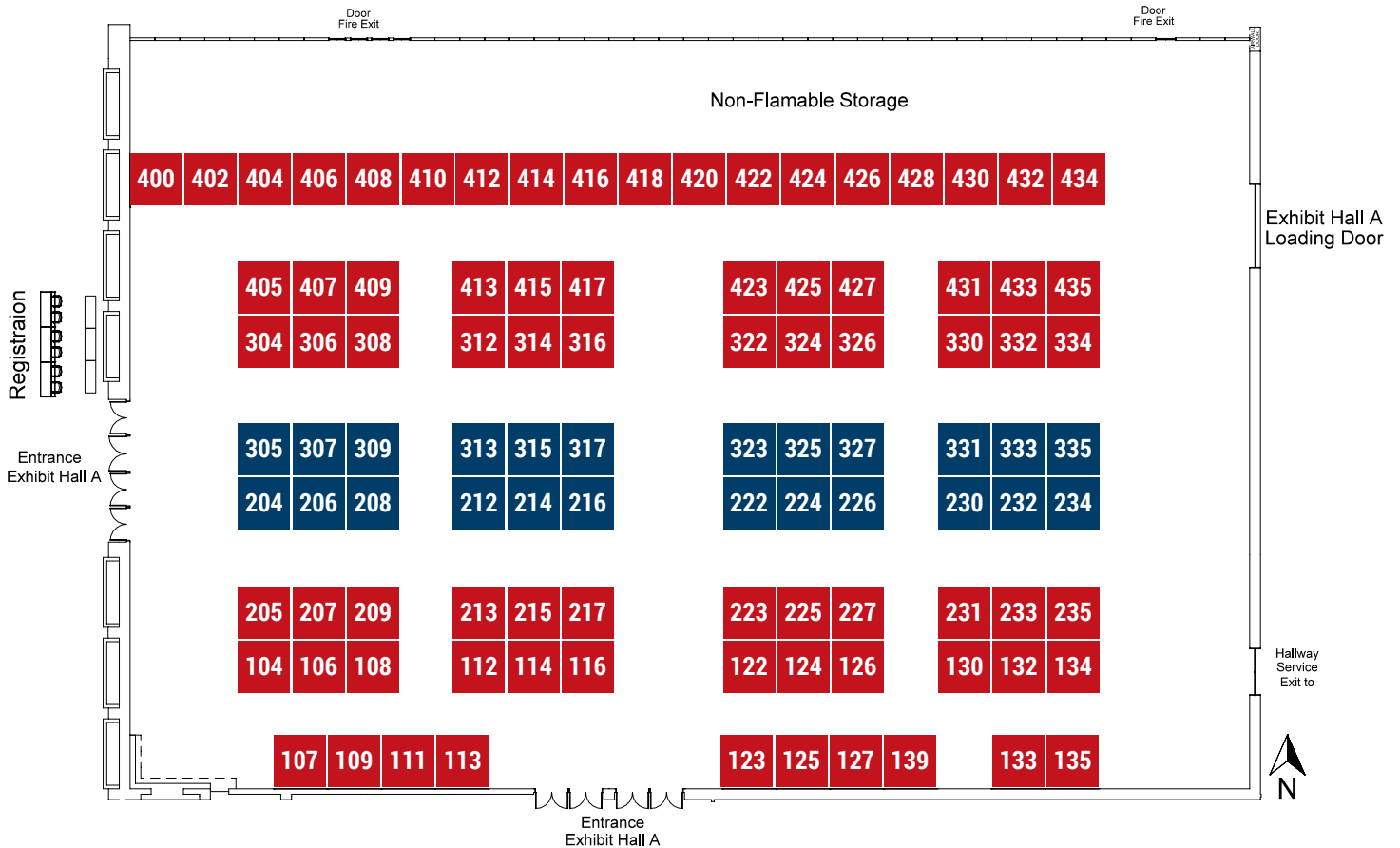
## SECOND FLOOR



# EXHIBIT HALL MAP

## LANSING CENTER

### LANSING, MICHIGAN



MICHIGAN PHARMACISTS ASSOCIATION



# EXHIBITORS & BOOTH LOCATION

AAPA .....	204, 305	Long Grove Pharmaceuticals .....	334
Abbott Diabetes Care .....	324	LSPedia .....	409
AbbVie Pharmaceuticals.....	104, 207, 327	MatchRX .....	308
Accord BioPharma .....	335	McKesson Amplify .....	224
Advanced Diabetes Supply/USMED/Edgepark ...	413	Meijer Pharmacy.....	212, 313
AlignRx .....	333	Merck .....	114, 307
American Pharmacies .....	435	Michigan Pharmacy Foundation .....	434
Astellas.....	317	Michigan State University Extension .....	326
AstraZeneca .....	230	Michigan WIC .....	107
B. Braun Medical   CAPS.....	130	Moderna.....	223
BridgeBio Pharmaceuticals.....	325	MPA Headshots .....	430, 432
Calmoseptine, Inc. ....	312	MPA Membership.....	428
Cardinal Health .....	405	Novartis .....	233
Cencora.....	213	Novo Nordisk.....	112, 309
CentorRx .....	423	OPEN .....	113
CHARM .....	125	Otsuka .....	330
Chiesi USA .....	316	Paratek Pharmaceuticals .....	402
CSL Seqirus .....	205	Par Health .....	417
Dexcom.....	315	Pfizer.....	314, 415
Drug Enforcement Administration .....	111	PMC Advantage Insurance Services .....	222
eLearning.....	306	Prescription Solutions LLC .....	304
Emlah Consulting.....	109	Progressive Medical, Inc.....	108
Fresenius Kabi.....	127, 139	ProPharma Cleanrooms.....	215
Genetech.....	122	PTCB.....	123
Global Clinical .....	132	RedSail Technologies.....	126
GSK Vaccines .....	209	RxParadigm .....	425
Heron Therapeutic .....	231	Sav-Mor .....	331
Hikma .....	235	Sequel .....	332
HomeTown Pharmacy Inc. ....	106	SERB Pharmaceuticals.....	427
ICARE Monitoring.....	116	SpartanNash .....	323
Johnson & Johnson .....	216	STAQ Pharma .....	124
Keenova .....	322	Vertex Pharmaceuticals, Inc. ....	214
Kroger Health .....	232, 234	Walgreens .....	226
L'Oreal Dermatological Beauty .....	134	Wells Pharma .....	217
Liberty Software .....	225	WG Critical Care.....	227
Lilly USA .....	206, 208		

# FREE PROFESSIONAL HEADSHOT FOR ALL ATTENDEES!



Be sure to visit the Kroger Health (booth #232) to receive your ticket for a complimentary professional headshot. Turn your ticket in at the MPA Photobooth (booth #432) and receive your free professional headshot!



**McKESSON**

# AMPLIFY

PATIENT FIRST. PHARMACY FORWARD. 

You are here to serve,  
**McKesson is here to amplify**

At McKesson, our core belief is that **the patient comes first**. Pharmacists are the healthcare providers that patients see most often. We are committed to protecting and elevating the profession, ensuring pharmacists can continue providing critical services to meet each patient's needs.



## Use Your Voice!

- Get active with your state association
- Contact your elected officials
- Meet your elected officials or give them a tour of your pharmacy

# ENRICHING LIVES

## IN THE COMMUNITIES WE SERVE



Vaccines



Prescription Management



Pet Prescriptions



Nutrition by Meijer



Specialty Pharmacy



mPerks Rewards

### Community Support

- Providing valuable health services to the community like: vaccinations, medication therapy management, point of care services, and drug take back.
- Collected over 63 tons of unused and expired medication last year in our drug take back program.
- Generated and donated more than \$10M to food pantries in 2024 in addition to over 10M pounds of food donated to Feeding America to help our neighbors in need.

### Investing In You

- Great Place to Work 2025.
- Benefit package with over 40 offerings!
- Meijer invests in our technicians offering training programs that lead to state board certification, national certification, and training in advanced clinical services.
- Through partnership with ACPE-accredited colleges of pharmacy and pharmaceutical industry, Meijer offers 2 community-based PGY1 residencies.

your one-stop pharmacy for all your health needs

 **meijer**  
pharmacy

# CONVENTION ITINERARY

## THURSDAY, APRIL 16

### 2-4 p.m. – MSHP Executive Board Meeting

Governor's Room, Second Floor

### 3-7 p.m. – Exhibitor Registration Open

Main Concourse, First Floor

### 4:30-6:30 p.m. – MPA Executive Board Meeting

Governor's Room, Second Floor

### 5-7 p.m. – Convention Registration Open

Main Concourse, First Floor

## FRIDAY, APRIL 17

### 6:30 a.m.-6 p.m. – Convention Registration Open

Main Concourse, First Floor

### 7:15-9:15 a.m. – Continental Breakfast

River Concourse, First Floor

### 8-9 a.m.

#### The Wild West of Wellness – Kratom and Gas Station Supplements (PAIN)

Meeting Rooms 101/102, First Floor

Target audience: Pharmacists and pharmacy technicians

1 contact hour: Knowledge-based activity

ACPE Universal Activity Number: 0112-9999-26-730-L08-P and 0112-9999-26-730-L08-T

Isabelle Zerfas, Pharm.D., pain management clinical pharmacy specialist, University of Michigan Health

Abbey Galligan, Pharm.D., BCPS, pain Management clinical pharmacy specialist, University of Michigan Health

Pharmacist and pharmacy technician learning objectives: At the completion of this activity, the participant will be able to review pharmacology of commonly used "gas station supplements" including kratom, 7OH, tianeptine, kava, and synthetic cannabinoids; discuss approaches to discussing supplement use and harm reduction with patients; and recognize withdrawal symptoms from dependence-forming supplements, and understand how to medically address supplement withdrawal or dependence.

#### Beyond the Finger Stick: Understanding Continuous Glucose Monitors in Pharmacy Practice (Tech PS)

Meeting Rooms 103/104, First Floor

Target audience: Pharmacists and pharmacy technicians

1 contact hour: Knowledge-based activity

ACPE Universal Activity Number: 0112-9999-26-721-L05-P and 0112-9999-26-721-L05-T

Lisa Salvati, Pharm.D., BCACP, FNAP, professor of pharmacy practice, Ferris State University College of Pharmacy

Ashlyn Kiebach, Pharm.D., clinical pharmacist, ambulatory care, Trinity Health Grand Rapids

Pharmacist learning objectives: At the completion of this activity, the participant will be able to identify and compare the features and functionality of commercially available continuous glucose monitors; describe effective patient education techniques for teaching the setup and use continuous glucose monitors; and explain continuous glucose monitor data to support therapeutic decision-making and patient education.

Pharmacy technician learning objectives: At the completion of this activity, the participant will be able to recognize the basic functions and components of continuous glucose monitors; identify the commercially available prescription and over-the-counter continuous glucose monitors; and explain ways to support pharmacy workflow related to CGMs including insurance coverage and documentation requirements.

#### Mission Impossible: Treating Pain in Patients with Substance Use Disorder (PAIN/CSA)

Meeting Rooms 201/202, Second Floor

Target audience: Pharmacists and pharmacy technicians

1 contact hour: Application-based activity

ACPE Universal Activity Number: 0112-9999-26-684-L08-P and 0112-9999-26-684-L08-T

Jill Coyveau, Pharm.D., associate professor, Ferris State University College of Pharmacy

Pharmacist learning objectives: At the completion of this activity, the participant will be able to describe the complexities of treating acute and chronic pain in patients with substance use disorder; list various approaches to treating acute or chronic pain in a patient with substance use disorder; and describe office-based practices to support patients with substance use disorder who are being treated for pain.

Pharmacy technician learning objectives: At the completion of this activity, the participant will be able to recognize the complexities of treating acute and chronic pain in patients with substance use disorder; identify various approaches to treating acute or chronic pain in a patient with substance use disorder; and describe office-based practices to support patients with substance use disorder who are being treated for pain.

# CONVENTION ITINERARY

## Leveraging Artificial Intelligence to Enhance Pharmacy Education: Opportunities, Challenges and Practical Integration

*Meeting Rooms 203-205, Second Floor*

Target audience: Pharmacists and pharmacy technicians

1 contact hour: Knowledge-based activity

ACPE Universal Activity Number: 0112-9999-26-735-L01-P and 0112-9999-26-735-L01-T

Xexin Zheng, Pharm.D., PGY-1 community pharmacy resident, Walgreens

Tonino Michienzi, Pharm.D., MTM pharmacist, residency program director, Walgreens

Pharmacist learning objectives: At the completion of this activity, the participant will be able to describe current and emerging applications of AI in pharmacy education, clinical decision-making, and professional practice; define the benefits, limitations and reliability of AI tools in supporting evidence-based recommendations; and identify opportunities to integrate AI tools into pharmacy practice for continuing professional development and patient care.

Pharmacy technician learning objectives: At the completion of this activity, the participant will be able to identify opportunities to integrate AI tools into pharmacy practice for continuing professional development and patient care; and describe the benefits, limitations and reliability of AI tools in supporting evidence-based recommendations.

**9:15-10:15 a.m.**

## 2026 Immunization Update

*Meeting Rooms 201/202, Second Floor*

Target audience: Pharmacists and pharmacy technicians

1 contact hour: Knowledge-based activity

ACPE Universal Activity Number: 0112-9999-26-711-L06-P and 0112-9999-26-711-L06-T

Joe Fava, Pharm.D., BCACP, clinical assistant professor, Wayne State University Eugene Applebaum College of Pharmacy and Health Sciences

Pharmacist and pharmacy technician learning objectives: At the completion of this activity, the participant will be able to review pertinent updates to the 2026 CDC Immunization Schedules; apply recent changes to ACIP recommendations and FDA prescription drug labeling for select vaccines; and utilize communication techniques that address contemporary issues in vaccine hesitancy.

## Inside the Cloud: A Pharmacist's Perspective on Vaping, Health Risks and Cessation Strategies

*Meeting Rooms 103/104*

Target audience: Pharmacists and pharmacy technicians

1 contact hour: Knowledge-based activity

ACPE Universal Activity Number: 0112-9999-26-714-L01-P and 0112-9999-26-714-L01-T

Anne Ottney, Pharm.D., professor, Ferris State University College of Pharmacy; ambulatory care pharmacist, University of Michigan-Sparrow Family Medicine Residency Clinic

Shelby Kelsh, Pharm.D., associate professor, Ferris State University College of Pharmacy; clinical pharmacist, Corewell Internal Medicine Residency Clinic

Michelle Kelly, Pharm.D., associate professor, Ferris State University College of Pharmacy; MPA president

Pharmacist and pharmacy technician learning objectives: At the completion of this activity, the participant will be able to describe the current landscape of vaping and electronic cigarette use; discuss potential acute and long-term harms of vaping; and identify evidence-based treatment for quitting vaping.

## Inside the Mind Part 1: Destigmatizing Addictions (IBT/PAIN)

*Meeting Rooms 203-205, Second Floor*

Target audience: Pharmacists and pharmacy technicians

1 contact hour: Knowledge-based activity

ACPE Universal Activity Number: 0112-9999-26-728-L08-P and 0112-9999-26-728-L08-T

Christopher Wolfinger, Pharm.D., MBA, clinical pharmacy specialist, Henry Ford Health

Sarah Hill, Pharm.D., pharmacist, Henry Ford Health; MPA past president

Pharmacist learning objectives: At the completion of this activity, the participant will be able to explain the neurobiological mechanisms underlying addiction and behavioral addictions; describe how stigma and implicit bias affect patient care and outcomes in pharmacy practice; identify non-stigmatizing communication strategies; and develop strategies to recognize and address implicit bias in daily pharmacy practice.

Pharmacy technician learning objectives: At the completion of this activity, the participant will be able to describe how substance and behavioral addictions affect brain reward pathways; recognize how stigma and implicit bias can influence interactions with patients who have substance use disorders; identify examples of stigmatizing language or behaviors that may occur in pharmacy settings; and explain the technician's role in supporting compassionate, equitable care in situations involving patients with addictions.

# CONVENTION ITINERARY

## **Pharmacy – We're in this Together**

*Meeting Rooms 101/102, First Floor*

Target audience: Pharmacists and pharmacy technicians

1 contact hour: Knowledge-based activity

ACPE Universal Activity Number: 0112-9999-26-696-L04-P and 0112-9999-26-696-L04-T

Donald Klepser, Ph.D., dean, University of Nebraska Medical Center College of Pharmacy

Pharmacist and pharmacy technician learning objectives: At the completion of this activity, the participant will be able to list the primary threats to pharmacy practice; illustrate how pharmacy practice across the health care continuum is connected; and identify strategies to support pharmacy practice in all settings.

**10:30-11:30 a.m.**

## **Appropriate Use of Vascular Access Devices in Patients Hospitalized with Cancer and/or for Cancer-Related Treatments**

*Meeting Rooms 101/102, First Floor*

Target audience: Pharmacists and pharmacy technicians

1 contact hour: Application-based activity

ACPE Universal Activity Number: 0112-9999-26-693-L01-P and 0112-9999-26-693-L01-T

Lama Hsaiky, Pharm.D., supervisor, infectious disease service line, Corewell Health

David Paje, MD, MPH, professor of medicine, University of Michigan Health Veterans Affairs Ann Arbor Healthcare System

Pharmacist and pharmacy technician learning objectives: At the completion of this activity, the participant will be able to describe the process and importance of convening a panel of international experts to establish new guidelines for vascular access devices in patients with cancer; identify appropriate use of vascular access devices in patients receiving chemotherapeutic agents; and discuss practical strategies for translating these guidelines into everyday pharmacy practice.

## **From Boomers to Zoomers: Engaging Gen Z in the Pharmacy Classroom**

*Meeting Rooms 103/104, First Floor*

Target audience: Pharmacists and pharmacy technicians

1 contact hour: Knowledge-based activity

ACPE Universal Activity Number: 0112-9999-26-720-L99-P and 0112-9999-26-720-L99-T

Sheila Wilhelm, Pharm.D., clinical professor, Wayne State University Eugene Applebaum College of Pharmacy and Health Sciences

Francine Salinitri, Pharm.D., director of experiential education and clinical professor, Wayne State University Eugene Applebaum College of Pharmacy and Health Sciences

Pharmacist and pharmacy technician learning objectives: At the completion of this activity, the participant will be able to describe the characteristics of generations commonly encountered in the classroom or profession, with a focus on Generation Z; review the learning preferences and motivations of Gen Z students; discuss examples of teaching and learning approaches that fulfill Gen Z learning preferences; and outline learning experiences targeted for Gen Z student pharmacists.

## **Not Just Naloxone – Practical Opioid Harm Reduction Strategies for Health Care Providers (PAIN)**

*Meeting Rooms 201/202, Second Floor*

Target audience: Pharmacists and pharmacy technicians

1 contact hour: Knowledge-based activity

ACPE Universal Activity Number: 0112-9999-26-713-L08-P and 0112-9999-26-713-L08-T

Melissa Murphy, Pharm.D., BCPS, clinical pharmacy specialist-drug use policy and education, Henry Ford Health Genesys Hospital

Pharmacist and pharmacy technician learning objectives: At the completion of this activity, the participant will be able to identify risk factors that increase a patient's risk of experiencing opioid-related harm; describe strategies that comprise harm reduction as relates to chronic prescription opioid use; and employ tactics to reduce the risk of opioid-related harm for appropriate patients.

# CONVENTION ITINERARY

## **Sexual Health: It's Okay to Ask**

*Meeting Rooms 203-205, Second Floor*

Target audience: Pharmacist and pharmacy technicians

1 contact hour: Application-based activity

ACPE Universal Activity Number: 0112-9999-26-697-L01-P and 0112-9999-26-697-L01-T

Michael Klepser, Pharm.D., professor, Ferris State University College of Pharmacy

Alyssa Hettel, pharmacy student, Ferris State University

Kevin Metushi, pharmacy student, Ferris State University

Pharmacist and pharmacy technician learning objectives: At the completion of this activity, the participant will be able to: describe the role of pharmacist in promoting sexual health; explain strategies to make talking about sex more comfortable for both pharmacists and patients; choose appropriate words when discussing sexual health topics with patients; and practice making information about sexual health patient friendly.

## **11:45 a.m.-12:45 p.m. – Sponsor Product Theater Lunches**

*Ballroom, Meeting Rooms 101/102 and 103/104, First Floor; Meeting Rooms 201/202 and 203-205, Second Floor*

## **11:45 a.m.-12:45 p.m. – Past Presidents Lunch**

*Governor's Room, Second Floor (Invitation Only)*

## **1-1:30 p.m. – Convention Welcome and Awards Presentation**

*Ballroom, First Floor*

Join us for opening remarks from MPA President Michelle Kelly and CEO Mark Gasper. MPA will also present the Executive Board Medal, Bowl of Hygeia and the Fred W. Arnold Public Relations Award. We will also honor the outgoing president and Executive Board members.

## **1:30-2:30 p.m. – Opening Keynote Session InteGREAT: Creating GREAT Healthcare Teams**

*Ballroom, First Floor*

Target audience: Pharmacists and pharmacy technicians

1 contact hour: Knowledge-based activity

ACPE Universal Activity Number: 0112-9999-26-768-L04-P and 0112-9999-26-768-L04-T

Trisha Branam, Pharm.D., clinical professor and assistant department head for professional education, University of Georgia College of Pharmacy

W. Anthony Hawkins, Pharm.D., clinical associate professor, University of Georgia College of Pharmacy

Pharmacist and pharmacy technician learning objectives: At the end of this activity, participants will be able to describe why teams are essential in health care; identify key components of building relationships; and discuss a plan to strengthen current team relationships.

## **2:30-3 p.m. – Refreshment Break**

*River Concourse, First Floor*

## **3-4 p.m.**

## **Rethinking Asthma Care: A Smarter Approach to SMART Therapy**

*Meeting Rooms 101/102, First Floor*

Target audience: Pharmacists and pharmacy technicians

1 contact hour: Application-based activity

ACPE Universal Activity Number: 0112-9999-26-691-L01-P and 0112-9999-26-691-L01-T

Nada Farhat, Pharm.D., clinical pharmacist specialist, University of Michigan; MSHP president

Njira Lugogo, MD, physician, University of Michigan

Pharmacist and pharmacy technician learning objectives: At the completion of this activity, the participant will be able to interpret new asthma treatment paradigms focused on SMART therapy; describe risks associated with SABA monotherapy and OCS overuse; demonstrate opportunities to partner to increase utilization of ICS-based reliever strategies; and apply strategies to encourage patient engagement and inhaler device education.

## **New Drug Update Part 1: Community and Specialty**

*Meeting Rooms 201/202, Second Floor*

Target audience: Pharmacists and pharmacy technicians

1 contact hour: Knowledge-based activity

ACPE Universal Activity Number: 0112-9999-26-723-L01-P and 0112-9999-26-723-L01-T

Katie Wenstrom, Pharm.D., CSP, manager of central clinical services and education, Meijer Pharmacy

Andrew DeVost, Pharm.D., PGY-1 resident, Meijer Pharmacy

Pharmacist and pharmacy technician learning objectives: At the completion of this activity, the participant will be able to identify significant therapeutic agents that were granted U.S. Food and Drug Administration approval in the past year; describe indications, doses, adverse events, drug interactions and pertinent patient counseling points for recently approved medications; and discuss the clinical impact and potential role of therapy of recently approved medications.

# CONVENTION ITINERARY

## **Inside the Mind Part 2: Destigmatizing Schizophrenia (IBT)**

*Meeting Rooms 203-205, Second Floor*

Target audience: Pharmacists and pharmacy technicians

1 contact hour: Application-based activity

ACPE Universal Activity Number: 0112-9999-26-692-L01-P and 0112-9999-26-692-L01-T

Christopher Wolfinger, Pharm.D., MBA, clinical pharmacy specialist, Henry Ford Health

Sarah Hill, Pharm.D., pharmacist, Henry Ford Health, MPA past president

Pharmacist learning objectives: At the completion of this activity, the participant will be able to illustrate the core positive, negative and cognitive symptoms of schizophrenia and their impact on patients' ability to perform daily tasks; demonstrate effective communication strategies that enhance trust and understanding when counseling patients experiencing psychotic symptoms; demonstrate empathy-based communication techniques and adherence strategies to support patients living with schizophrenia; and employ opportunities within their pharmacy practice to reduce stigma and improve the quality of care for individuals with serious mental illness.

Pharmacy technician learning objectives: At the completion of this activity, the participant will be able to apply strategies to assist patients with schizophrenia in understanding or following medication instructions during pharmacy interactions; demonstrate effective, empathetic communication techniques when interacting with patients exhibiting disorganized or paranoid behavior; and use observation and active listening skills to recognize signs of confusion, sensory overload, or cognitive impairment.

## **Hypertension Fun and Games**

*Meeting Rooms 103/104, First Floor*

Target audience: Pharmacists and pharmacy technicians

1 contact hour: Application-based activity

ACPE Universal Activity Number: 0112-9999-26-694-L01-P and 0112-9999-26-694-L01-T

Shelby Kelsh, Pharm.D., associate professor, Ferris State University College of Pharmacy

Pharmacist and pharmacy technician learning objectives: At the completion of this activity, the participant will be able to apply hypertension treatment algorithm to patient cases; interpret how patient factors such as comorbidities, adherence and social determinants of health affect blood pressure control; and use teamwork and collaboration to play under pressure and navigate hypertension patient care.

**4:15-5:15 p.m.**

## **Overcoming Obstacles to Providing Iron Infusions for Women's Health**

*Meeting Rooms 101/102, First Floor*

Target audience: Pharmacists and pharmacy technicians

1 contact hour: Knowledge-based activity

ACPE Universal Activity Number: 0112-9999-26-731-L01-P and 0112-9999-26-731-L01-T

Jessica Naylor, RPh, Pharm.D., manager of clinical and infusion services, OptiMed Health Partners

Stephen Fein, MD, MPH, hematologist and oncologist, HemeOnCall

Pharmacist and pharmacy technician learning objectives: At the completion of this activity, the participant will be able to recognize clinical symptoms, risk factors and laboratory criteria to accurately diagnose iron deficiency in women; select an optimal infusion plan (total iron dose, brand and schedule) that aligns with patient-specific needs and health insurance coverage; identify common insurance barriers to iron infusion therapy and implement strategies to navigate prior authorizations, coverage limitations and cost-related delays; discuss effectiveness, safety and tolerability of iron infusions, including in pregnant women, to better manage infusion-related reactions and adverse effects for each of the iron products; outline a post-infusion monitoring plan, including timing and interpretation of ferritin and hemoglobin levels, to detect recurrence of iron deficiency and to guide repeat treatment when needed; describe the different IV iron products and their key characteristics, including typical dosing schedules and infusion times; outline insurance and authorization requirements for iron infusion therapy and assist in gathering documentation to support prior authorizations; explain the importance of iron therapy in pregnancy and how technicians can support timely access to treatment; and discuss protocols for post-infusion monitoring, including scheduling follow-up labs and documenting ferritin and hemoglobin results accurately.

# CONVENTION ITINERARY

## **More Than a Gut Feeling: Choosing the Right Probiotic**

*Meeting Rooms 103/104, First Floor*

Target audience: Pharmacists and pharmacy technicians

1 contact hour: Knowledge-based activity

ACPE Universal Activity Number: 0112-9999-26-727-L01-P and 0112-9999-26-727-L01-T

Sheila Wilhelm, Pharm.D., clinical professor, Wayne State University Eugene Applebaum College of Pharmacy and Health Sciences

Pharmacist learning objectives: At the completion of this activity, the participant will be able to describe various probiotic strains and their unique roles in addressing specific health conditions; explain appropriate probiotic therapy regimens, including selecting the right strain, dose and duration; and discuss with patients the benefits, potential risks and realistic expectations of probiotic use in everyday health maintenance and disease prevention.

Pharmacy technician learning objectives: At the completion of this activity, the participant will be able to recognize various probiotic strains and their unique roles in addressing specific health conditions; discuss appropriate probiotic therapy regimens, including selecting the right strain, dose and duration; and outline key counseling tips for patients on the benefits, potential risks and realistic expectations of probiotic use in everyday health maintenance and disease prevention.

## **What to Expect When You're Inspected (E&J)**

*Meeting Rooms 201/202, Second Floor*

Target audience: Pharmacists and pharmacy technicians

1 contact hour: Knowledge-based activity

ACPE Universal Activity Number: 0112-9999-26-699-L03-P and 0112-9999-26-699-L03-T

Kimberly Moon, Pharm.D., clinical consultant pharmacist, Optum  
Scott Ciarkowski, Pharm.D., pharmacy assistant director of quality, regulatory and medication safety, Michigan Medicine

Trisha Fick, RPh, retail pharmacy manager, Corewell Health

Pharmacist learning objectives: At the completion of this activity, the participant will be able to review LARA's role and inspection process; identify pharmacy deficiencies noted during inspections; identify best practices for record-keeping and documentation; and explain procedures for storing, tracking and dispensing controlled substances in accordance with LARA guidelines.

Pharmacy technician learning objectives: At the completion of this activity, the participant will be able to outline a potential checklist for monthly self-inspection of pharmacies; discuss CE requirements that apply to technicians; recognize what to do when an inspector arrives at your pharmacy; and define scope of practice of pharmacy technicians.

## **New Drug Update Part 2: Inpatient**

*Meeting Rooms 203-205, Second Floor*

Target audience: Pharmacists and pharmacy technicians

1 contact hour: Knowledge-based activity

ACPE Universal Activity Number: 0112-9999-26-736-L01-P and 0112-9999-26-736-L01-T

Madeline Fouts, Pharm.D., clinical pharmacist, Trinity Health Muskegon Hospital

Pharmacist and pharmacy technician learning objectives: At the completion of this activity, the participant will be able to identify significant therapeutic agents that were granted U.S. Food and Drug Administration approval in the past year; describe indications, doses, adverse events, drug interactions and pertinent patient counseling points for recently approved medications; discuss the clinical impact and potential role of therapy for recently approved medications.

## **5-8 p.m. – Exhibit Hall Opening Reception**

*Exhibit Hall A, First Floor*

## **5:30-6:30 p.m. – ACE Poster Presentations**

*Michigan Avenue Concourse, First Floor*

Target audience: pharmacists and pharmacy technicians

1 contact hour: Application-based activity

ACPE Universal activity number: 0112-9999-26-003-L01-P and 0112-9999-26-003-L01-T

Pharmacist and pharmacy technician learning objectives: At the completion of this activity, the participant will be able to interpret key findings from the presented research studies, applying evidence-based principles to professional practice; interpret the implications of the research outcomes for improving patient care, clinical interventions, or industry standards; and employ data interpretation skills to analyze research results and assess their relevance to professional practice.

## **7-8 p.m. – Tech Connect Reception**

*Boardroom 1, Second Floor (ticket required)*

## **6:30-9 p.m. – Ferris State Alumni Reception**

*Meeting Rooms 201/202, Second Floor*

## **6:30-9 p.m. – Wayne State Alumni Reception**

*Meeting Rooms 203-205, Second Floor*

## **8-11 p.m. – New Practitioner Night on the Town at Lansing Shuffle**

*Lansing Shuffle (adjacent to Lansing Center)*

# CONVENTION ITINERARY

## SATURDAY, APRIL 18

**6:30 a.m.-5:30 p.m. – Convention Registration Open**  
*Main Concourse, First Floor*

**7-8 a.m. – MPF Mini-Golf and Networking Breakfast**  
*Exhibit Hall A, First Floor*

**7:15-9:15 a.m. – Continental Breakfast**  
*River Concourse, First Floor*

**8 a.m., 9:15 a.m., 1 p.m. and 4 p.m. – Escape Room**  
*Boardroom 1, Second Floor*

Target audience Pharmacists and pharmacy technicians

1 contact hour: application-based activity

ACPE Universal Activity Number: 0112-9999-26-703-L01-P and 0112-9999-26-703-L01-T

Pharmacist and pharmacy technician learning objectives: At the completion of this activity, the participant will be able to describe the incidence and prevalence of foodborne illnesses; list the top eight pathogens associated with food-borne illnesses; identify the risk factors associated with contracting a food-borne illness; and interpret data from a patient case to develop a treatment and prevention care plan.

**8 a.m.-4:30 p.m. – HPLA Final Session**  
*Governor's Room, Second Floor*

**8-9 a.m.**  
**Test, Talk, Transform: Integrating Nutrient Testing to Elevate Patient Engagement in Pharmacy**  
*Meeting Rooms 101/102, First Floor*

Target audience: Pharmacists and pharmacy technicians

1 contact hour: Knowledge-based activity

ACPE Universal Activity Number: 0112-9999-26-724-L01-P and 0112-9999-26-724-L01-T

Emlah Tubuo, Pharm.D., MS, owner, Powell Pharmacy in Powell, Ohio

Pharmacist and pharmacy technician learning objectives: At the completion of this activity, the participant will be able to describe how integrating nutrient and wellness testing expands the pharmacist's role in preventive and personalized care; identify patients who are good candidates for nutrient testing based on symptoms, medication use and health goals; and illustrate strategies to implement nutrient testing services within the pharmacy workflow to drive clinical impact, collaboration and patient trust.

## Pharmacy Practice is a Business

*Meeting Rooms 103/104, First Floor*

Target audience: Pharmacists and pharmacy technicians

1 contact hour: Application-based activity

ACPE Universal Activity Number: 0112-9999-26-712-L04-P and 0112-9999-26-712-L04-T

Ryan Moore, RPh, MBA, CEO, Moore Family Pharmacy

Austin Brown, Pharm.D., MBA, executive consultant, CoPro+

Pharmacist and pharmacy technician learning objectives: At the completion of this activity, the participant will be able to describe medication pricing and reimbursement strategies; describe successful strategies that pharmacists have employed to grow their practice; and demonstrate how increasing our understanding of the business of pharmacy will benefit the entire profession.

## Hormonal Contraceptive Prescribing Update

*Meeting Rooms 203-205, Second Floor*

Target audience: Pharmacists and pharmacy technicians

1 contact hour: Application-based activity

ACPE Universal Activity Number: 0112-9999-26-733-L01-P and 0112-9999-26-733-L01-T

Leang Mey Tao, Pharm.D., executive fellow, Michigan Pharmacists Association

Pharmacist and pharmacy technician learning objectives: At the completion of this activity, the participant will be able to describe the public impact of unintended pregnancy and the role of contraception access in improving outcomes; summarize current state and federal regulations related to pharmacist-prescribing hormonal contraception; demonstrate appropriate patient assessment using a contraception screening questionnaire, blood pressure evaluation and documentation; discuss billing, reimbursement and workflow considerations for implementing prescribing services in pharmacy practice; and recognize equity and access considerations when delivering contraceptive care.

# CONVENTION ITINERARY

## **The Price of Prolonging the Prescription: Effects of Long-Term Opioid Therapy (PAIN)**

*Meeting Rooms 201/202, Second Floor*

Target audience: Pharmacists and pharmacy technicians

1 contact hour: Knowledge-based activity

ACPE Universal Activity Number: 0112-9999-26-729-L08-P and 0112-9999-26-729-L08-T

Isabelle Zerfas, Pharm.D., pain management clinical pharmacy specialist, University of Michigan Health

Abbey Galligan, Pharm.D., BCPS, pain management clinical pharmacy specialist, University of Michigan Health

Pharmacist and pharmacy technician learning objectives: At the completion of this activity, the participant will be able to describe the clinical effects of long-term opioid therapy; recognize when opioids are no longer indicated and be able to provide safe tapering recommendations; discuss features of complex persistent opioid dependence and understand management strategies to reduce the risk of harm to patients.

**9:15-10:15 a.m.**

## **Beyond the Pharmacy Walls: Pharmacists Driving Smoking Cessation on Mobile Health Units (MHUs) in Detroit**

*Meeting Rooms 101/102, First Floor*

Target audience: Pharmacists and pharmacy technicians

1 contact hour: Knowledge-based activity

ACPE Universal Activity Number: 0112-9999-26-719-L01-P and 0112-9999-26-719-L01-T

Pia-Allison Roa, Pharm.D., clinical pharmacy specialist, Wayne Mobile Health Unit

Brittany Stewart, Pharm.D., RD, clinical associate professor, Wayne State University Eugene Applebaum College of Pharmacy and Health Sciences

Pharmacist and pharmacy technician learning objectives: At the completion of this activity, the participant will be able to describe the implementation of the pharmacist-led ACHIEVE-Cessation program on a mobile health unit (MHU); discuss prescribing and managing smoking cessation therapy for patients using tobacco or Electronic Nicotine Delivery Systems (ENDS); and describe the clinical and behavioral patient outcomes and future directions of the ACHIEVE-Cessation program.

## **Connecting the Dots: Using Social Determinants of Health to Improve Patient Care (Tech PS)**

*Meeting Rooms 103/104, First Floor*

Target audience: Pharmacists and pharmacy technicians

1 contact hour: Application-based activity

ACPE Universal Activity Number: 0112-9999-26-695-L05-P and 0112-9999-26-695-L05-T

Adam King, CPhT, MPH, PRS, director of pharmacy advocacy, Health Plan Advocate; CSPM president-elect

Pharmacist and pharmacy technician learning objectives: At the completion of this activity, the participant will be able to illustrate the impact of the social determinants of health on patient care; employ the SODH framework in daily pharmacy workflow; and identify community resources that enhance patient care.

## **Best Practices for Dispensing Compounded Drugs: A Deep Dive "Made possible by the Pharmacy Compounding Foundation"**

*Meeting Rooms 203-205, Second Floor*

Target audience: Pharmacists and pharmacy technicians

1 contact hour: Knowledge-based activity

ACPE Universal Activity Number: 0112-9999-26-716-L07-P and 0112-9999-26-716-L07-T

Tennille Davis, Pharm.D., chief advocacy officer, Alliance for Pharmacy Compounding

Pharmacist and pharmacy technician learning objectives: At the completion of this activity, the participant will be able to identify key legal and professional requirements for dispensing compounded medications pursuant to patient-specific prescriptions; describe best practices for labeling and packaging compounded medications to promote patient understanding and proper use; give examples of effective patient counseling strategies specific to compounded therapies, including dosing, administration, storage and follow-up considerations; explain the difference between dispensing responsibilities for compounded medications from those applicable to FDA-approved manufactured drugs; and compile documentation and quality assurance practices that support compliant dispensing and continuity of care.

# CONVENTION ITINERARY

## **MI Wide Network of Cancer Drug Repositories: YesRx Results (E&J)**

*Meeting Rooms 201/202, Second Floor*

Target audience: Pharmacists and pharmacy technicians

1 contact hour: Knowledge-based activity

ACPE Universal Activity Number: 0112-9999-26-688-L03-P and 0112-9999-26-688-L03-T

Emily Mackler, Pharm.D., chief medical officer, YesRx; adjunct clinical associate professor, University of Michigan College of Pharmacy

Pharmacist and pharmacy technician learning objectives: At the end of this activity, participants should be able to review the Michigan legislation related to Cancer Drug Repository programming; identify opportunities to participate within the Cancer Drug Repository program; and discuss patient and community outcomes from a statewide CDR network

## **10:30-10:45 a.m. – Awards Presentation**

*Ballroom, First Floor*

MPA will present the Pharmacists Mutual Distinguished Young Pharmacist Award, Fellow of MPA, Pharmacy Hall of Honor and Years of Membership distinctions.

## **10:45-11:45 a.m. – Keynote Session From Apothecaries to Algorithms: Is AI the Right Prescription?**

Target audience: Pharmacists and pharmacy technicians

1 contact hour: Knowledge-based activity

ACPE Universal Activity Number: 0112-9999-26-767-L04-P and 0112-9999-26-767-L04-T

Sean Jeffery, Pharm.D., professor of pharmacy practice, University of Connecticut; director of pharmacy services, Integrated Care Partners; vice president, Connecticut Pharmacists Association; treasurer, American Pharmacists Association

Pharmacist and pharmacy technician learning objectives: At the completion of this activity, participants will be able to describe the geopolitical drivers and supply chain dynamics of the global AI landscape to determine their direct impact on pharmacy; explain the difference between current generative AI applications and the projected capabilities of artificial general intelligence (AGI) within clinical decision support systems; and relate the ethical and professional implications of autonomous AI "agents" in pharmacy practice to establish a framework for maintaining the pharmacist's role as the final clinical authority.

## **Noon-1:45 p.m.**

### **CSPM Annual Meeting and Awards Luncheon\***

*Meeting Room 103/104, First Floor*

### **MSPT Annual Meeting and Awards Luncheon\***

*Meeting Room 101/102, First Floor*

## **MSCP Meeting and Awards Luncheon\***

*Meeting Room 201/202, Second Floor*

## **MSHP Annual Student Sponsored Luncheon\***

*Meeting Room 203-205, Second Floor*

*\*Tickets required to attend.*

## **Noon-2 p.m. Exhibit Hall Hours and Lunch**

*Exhibit Hall A, First Floor*

## **2-2:15 p.m. – Awards Presentation**

*Ballroom, First Floor*

The Michigan Pharmacy Foundation will present its annual scholarship awardees.

## **2:15-3:45 p.m. NASPA/NMA Self-Care Competition**

*Ballroom, First Floor*

Target audience: Pharmacists and pharmacy technicians

1.5 contact hours: Knowledge-based activity

ACPE Universal Activity Number: 0112-9999-26-701-L99-P and 0112-9999-26-701-L99-T

Pharmacist and pharmacy technician learning objectives: At the completion of this activity, the participant will be able to identify and explain aspects of the effective and safe practices of pharmacy self-care; describe at least two over-the-counter and prescription medication interactions that pharmacists and pharmacy technicians should be aware of; and list three OTC medications and their use. Pharmacists should identify counseling points for each of three OTC medications.

## **4-5 p.m. Precepting Gen Z: From Memes to Meaningful Feedback**

*Meeting Rooms 101/102, First Floor*

Target audience: Pharmacists and pharmacy technicians

1 contact hour: Application-based activity

ACPE Universal Activity Number: 0112-9999-26-698-L99-P and 0112-9999-26-698-L99-T

Amber Lanae Martirosov, Pharm.D., associate clinical professor, Wayne State University, MSHP president-elect

Francine Salinitri, Pharm.D. clinical professor, director of experiential education, Department of Pharmacy Practice, Wayne State University

Pharmacist and pharmacy technician learning objectives: At the completion of this activity, the participant will be able to define characteristics and values of the different generations; identify communication strategies to bridge generational gaps in expectations and feedback, specifically for Generation Z; and practice promoting an inclusive environment that supports social connection and learner engagement for Generation Z learners.

# CONVENTION ITINERARY

## **Cyber Liabilities: Risks, Ransoms and Remedies**

*Meeting Rooms 103/104, First Floor*

Target audience: Pharmacists and pharmacy technicians

1 contact hour: Application-based activity

ACPE Universal Activity Number: 0112-9999-26-775-L04-P and 0112-9999-26-775-L04-T

Ron Devers, business development executive, PMC Advantage Insurance

Pharmacist and pharmacy technician learning objectives: At the end of this activity, the participants will be able to demonstrate how insurance companies insure cyber liability risks; analyze examples of cyber breaches and claims stories to determine key cyber risk implications; apply practical risk management techniques to prevent cyber liability claims; and assess areas of potential exposure with regard to collected data and apply strategies to protect against likely threats.

## **Root Cause Analysis: A Safety, Legal and Ethical Framework (E&J)**

*Meeting Rooms 201/202, Second Floor*

Target audience: Pharmacists and pharmacy technicians

1 contact hour: Application-based activity

ACPE Universal Activity Number: 0112-9999-26-734-L03-P and 0112-9999-26-734-L03-T

Brooke Roe, Pharm.D., manager of pharmacy quality and accreditation, Meijer

Charlie Mollien, Pharm.D., J.D., pharmacy compliance officer, Meijer; MPA past president

Pharmacist and pharmacy technician learning objectives: At the completion of this activity, the audience will illustrate how root cause analysis contributes to medication safety improvement and error prevention; choose common root cause analysis tools and techniques based on their appropriate use in medication safety events; apply the Patient Safety and Quality Improvement Act of 2005 and Patient Safety Organization (PSO) principles to protect patient safety information and support continuous improvement in organizational safety culture; and interpret root cause analysis design to identify and mitigate potential sources of bias.

## **Pharm to Table: Serving, Not Ordering, in Tribal Health (IBT)**

*Meeting Rooms 203-205, Second Floor*

Target audience: Pharmacists and pharmacy technicians

1 contact hour: Application-based activity

ACPE Universal Activity Number: 0112-9999-26-687-L04-P and 0112-9999-26-687-L04-T

Nicholas Cushman, Pharm.D., MHA, BCACP, adjunct clinical instructor, University of Michigan College of Pharmacy

Pharmacist and pharmacy technician learning objectives: At the completion of this activity, the participant will be able to describe the structure and function of tribal health systems and explain how understanding tribal governance and sovereignty supports respectful and effective collaboration; apply principles of cultural humility, shared decision-making, and co-development when designing or implementing patient-centered care initiatives within tribal and public health settings; and demonstrate strategies that strengthen partnerships among pharmacy professionals, tribal health programs, academic institutions, and other organizations to enhance access to care and improve community health outcomes.

## **5:15-6:45 p.m. – PAC Reception**

*Governor's Room, Second Floor*

## **5:45-6:45 p.m. – SPMA Student Social Sponsored by the Michigan Pharmacy Foundation**

*Michigan Avenue Concourse, First Floor (free event, pre-registration required)*

## **7-9 p.m. – MPA President's Reception**

*Ballrooms, First Floor (free event, pre-registration required)*

Join us in the first floor ballroom for food, drinks and socializing! President Michelle Kelly will address attendees and MPA will present the Excellence in Innovation and Pharmacist of the Year awards.

## **SUNDAY, APRIL 19**

### **7-11:15 a.m. – Convention Registration Open**

*Main Concourse, First Floor*

### **7:15-9:15 a.m. – Continental Breakfast**

*River Concourse, First Floor*

### **7:30-8:15 a.m. – LADC Networking Breakfast**

*Meeting Rooms 201/202, Second Floor*

# CONVENTION ITINERARY

**8:30-9:30 a.m.**

## **MPA Advocacy Town Hall (E&J)**

*Ballroom, First Floor*

Target audience: Pharmacists and pharmacist technicians

1 contact hour: Application-based activity

ACPE Universal Activity Number: 0112-9999-26-732-L03-P and 0112-9999-26-732-L03-T

Eric Roath, Pharm.D., MBA, director of government affairs, Michigan Pharmacists Association

Pharmacist and pharmacy technician learning objectives: At the completion of this activity, the participant will be able to discuss current legislative activity impacting pharmacy practice; demonstrate activities that advance pharmacy advocacy; and apply available resources to grassroots advocacy efforts.

**9:45 a.m.-10:45 a.m.**

## **Hey You! Get Off of My Cloud: Developing Local AI Models for Pharmacy**

*Meeting Rooms 203-205, Second Floor*

Target audience: Pharmacists and pharmacy technicians

1 contact hour: Application-based activity

ACPE Universal Activity Number: 0112-9999-26-722-L04-P and 0112-9999-26-722-L04-T

Minji Sohn, Ph.D., professor, Ferris State University College of Pharmacy  
Kushal Dahal, MS, data analyst, Ferris State University College of Pharmacy

Pharmacist and pharmacy technician learning objectives: At the completion of this activity, the participant will be able to describe the advantages and disadvantages of using cloud-based and local AI models; explain the technical requirements for establishing a local AI model; and write a workplan to develop a local AI model.

## **Empowering Safe Medication Reduction: Strategies for Patient-Centered Deprescribing (Tech PS)**

*Meeting Rooms 201/202*

Target audience: Pharmacists and pharmacy technicians

1 contact hour: Application-based activity

ACPE Universal Activity Number: 0112-9999-26-725-L05-P and 0112-9999-26-725-L05-T

Sarah Vordenberg, Pharm.D., clinical professor and associate chair, University of Michigan College of Pharmacy

Noelia Dulo, pharmacy student, University of Michigan

Pharmacist and pharmacy technician learning objectives: At the completion of this activity, the participant will be able to describe the importance of deprescribing to address polypharmacy among older adults; discuss the steps of patient-centered deprescribing; list medications that may be appropriate targets for evidence-based deprescribing; and identify facilitators and barriers to deprescribing across pharmacy practice settings.

**11-Noon**

## **Medication Dosing When Your Patient is Cirrhos-ing**

*Meeting Rooms 203-205, Second Floor*

Target audience: Pharmacists and pharmacy technicians

1 contact hour: Knowledge-based activity

ACPE Universal Activity Number: 0112-9999-26-717-L01-P and 0112-9999-26-717-L01-T

Randolph Regal, Pharm.D., clinical associate professor of pharmacy, clinical pharmacy specialist adult internal medicine, University of Michigan College of Pharmacy

Pharmacist and pharmacy technician learning objectives: At the completion of this activity, the participant will be able to describe the Child-Pugh Scoring System and how it is used to classify degrees of hepatic impairment and subsequent drug dosing; outline the changes that are usually seen in the phases of absorption, distribution, metabolism and excretion as cirrhosis progresses; discuss how the specific PKIN and PDYN profile change of certain key drugs and what types of adjustments could be made as a results; identify ways that your institutions could call more attention to recognizing patients with cirrhosis and better understand what types of interventions would be optimal for their care; describe the Child Pugh Scoring System and how it is used to determine drug dosing; outline how the condition of cirrhosis changes pharmacokinetic phases, such as ADME, as the disease progresses; and discuss possible ways in which your institution could increase awareness about patients having the condition of cirrhosis.

## **Osteoporosis: Beyond Bisphosphonates**

*Meeting Rooms 201/202, Second Floor*

Target audience: Pharmacists and pharmacy technicians

1 contact hour: Knowledge-based activity

ACPE Universal Activity Number: 0112-9999-26-726-L01-P and 0112-9999-26-726-L01-T

Lillian Wang, Pharm.D., PGY-2 ambulatory care pharmacy resident, Henry Ford Health

Hugh Quinn, BCPS, CDCES, advanced pharmacy practice provider, Henry Ford Health

Pharmacist learning objectives: At the completion of this activity, the participant will be able to identify mechanisms of action of antiresorptive and anabolic therapies used in the management of osteoporosis beyond bisphosphonates; select appropriate osteoporosis therapy recommendations based on individual patient fracture risk stratification; and use patient-specific characteristics to design individualized sequential therapy plans.

Pharmacy technician learning objectives: At the completion of this activity, the participant will be able to describe common osteoporosis therapies beyond bisphosphonates, including routes of administration and dosing frequency; summarize key storage, handling and self-administration support considerations for osteoporosis medications; and recognize common adverse effects and safety considerations associated with non-bisphosphonate osteoporosis therapies.

## 9:45 a.m.-12:45 p.m. – House of Delegates (E&J)

Ballroom, First Floor

The MPA House of Delegates is the policy-forming body of the Association. At each Annual Convention & Exposition, the House of Delegates convenes to discuss proposed policy changes and review the MPA Bylaws. After discussion and vote on any proposed changes, those resolutions are directed to the MPA Executive Board for review and recommendation. The session is open to members for viewing, however, MPA has accredited the HOD session for 1.5 hours of law and ethics credit for 2026. Those wishing to claim CE must register prior to attending.

Target audience: Pharmacists and pharmacy technicians

1.5 contact hours: Application-based activity

ACPE Universal Activity Number: 0112-9999-26-702-L03-P and 0112-9999-26-702-L03-T

Pharmacist and pharmacy technician learning objectives: At the completion of this activity, the participant will be able to engage in House of Delegates governance processes to influence professional policy and practice standards; analyze professional issues influencing pharmacy practice in Michigan to determine their impact on the profession and patient care; evaluate proposed resolutions and policy initiatives by assessing their rationale, intended outcomes, and implications for pharmacy practice; and demonstrate effective participation in professional governance through advocacy, ethical reasoning and deliberation during delegate discussion and voting processes.

## Convention Adjourns

### RxParadigm™

#### REDEFINING 340B & MFP EXECUTION THROUGH TUNGSTEN+PLUS™ POWERED NEUTRAL CLEARINGHOUSE

The implementation of the Medicare Maximum Fair Price (MFP) and the evolution of the 340B rebate model are reshaping the pharmaceutical landscape—introducing new layers of operational complexity, compliance risk, and financial uncertainty. **RxParadigm™ delivers the solution.** Tungsten+PLUS™ is a neutral, end-to-end clearinghouse platform designed to seamlessly connect Covered Entities, Drug Manufacturers, Pharmacies, Provider offices, Wholesalers, and Regulators through a single, trusted infrastructure.

<h4 style="margin: 0;">ONE PLATFORM TOTAL ALIGNMENT</h4> <p style="font-size: 0.8em; margin: 0;">Neutral Clearinghouse Architecture Purpose—built to ensure transparency, interoperability, and data integrity—without bias, supporting fair and standardized execution across all stakeholders.</p>	<h4 style="margin: 0;">END-TO-END MFP EFFECTUATION</h4> <p style="font-size: 0.8em; margin: 0;">From claim validation and eligibility determination to payment reconciliation and dispute resolution, Tungsten+PLUS™ enables precise, compliant MFP execution at scale.</p>
<h4 style="margin: 0;">ENTERPRISE DE-DUPLICATION ENGINE</h4> <p style="font-size: 0.8em; margin: 0;">Advanced cross-program intelligence to eliminate duplicate discounts across 340B, MFP, Medicaid, and commercial rebate structures—protecting financial integrity for all participants</p>	<h4 style="margin: 0;">340B REBATE ADMINISTRATION</h4> <p style="font-size: 0.8em; margin: 0;">Streamlined, scalable support for the full rebate lifecycle—submission, adjudication, invoicing, and audit-ready reporting—reducing administrative burden across the ecosystem.</p>
	<h4 style="margin: 0;">BUILT FOR REGULATORY CONFIDENCE</h4> <p style="font-size: 0.8em; margin: 0;">Standardized data submission aligned with CMS &amp; HRSA expectations. Real-time claim visibility and centralized tracking. Structured dispute and denial workflows Audit-ready documentation and reporting</p>

#### A SINGLE SOURCE OF TRUTH IN A FRAGMENTED SYSTEM

In a market defined by change, Tungsten+PLUS™ delivers what the industry needs most: clarity, control, and confidence. RxParadigm™ | Tungsten+PLUS™ Neutral. Transparent. Trusted.

TURNING COMPLEXITY INTO CLARITY

For partnerships and implementation inquiries: [info@rxparadigm.com](mailto:info@rxparadigm.com) | [www.rxparadigm.com](http://www.rxparadigm.com)

# PHARMACY SOFTWARE SHOULD BE DESIGNED AND SUPPORTED BY PHARMACISTS.

**VISIT US AT BOOTH 225**



Pharmacists helping pharmacists. A pharmacy software platform designed by pharmacists. It just makes sense. View the demo and see the difference.

Scan to view the demo



# Liberty

SOFTWARE

PHARMACY SOFTWARE FOR PHARMACY SUCCESS

View a demo now at [libertysoftware.com](http://libertysoftware.com) or call us at 800-480-9603

## Pharmacy Support & Clinical Operations Assistance

### Credentialing and Administrative Support



#### Pharmacist Credentialing Assistance

- Identify credentialing gaps
- Organize and submit documentation
- Track application progress
- Reduce pharmacist administrative workload



#### General Administrative Tasks

- Remote paperwork and data entry
- License and compliance updates
- Insurance coordination
- Frees staff for patient-facing care

### Patient and Provider Contact Center Support



#### Patient/Provider Inquiry Management

- Handle calls, emails, and chat inquiries
- Provide prescription and documentation updates
- Retrieve discharge records
- Resolve routine issues without escalation



#### Medication Profile Management

- Maintain patient medication records
- Update profiles through secure systems
- Ensure accurate pharmacy data

### Medication Therapy Management (MTM) Services



#### Patient Identification and Targeting

- Analyze pharmacy data for MTM eligibility
- Identify interaction, dosing, or adherence risks
- Coordinate outreach and scheduling



#### Prescription Review and Plan Development

- Conduct remote medication reviews
- Support MAP and PMR development
- Coordinate communication with patients and providers

### Therapeutic Interchange Support



#### Formulary Analysis and Recommendations

- Evaluate formulary drug classes
- Identify interchange opportunities
- Recommend cost-effective alternatives



#### Notification and Inquiry Handling

- Notify patients and providers of changes
- Manage follow-up questions
- Ensure smooth medication transitions

## Pharmacogenomic (PGx) Testing



GeneWise™Rx from Achieve Diagnostics is an advanced pharmacogenomic (PGx) test that analyzes a patient's genetic makeup to guide medication selection and dosage. By identifying how an individual's genes affect their response to medications, GeneWise™Rx helps optimize treatment plans for enhanced safety and efficacy.

### Why GeneWise™ Rx



#### Reduce Trial and Error

Move beyond a "one-size-fits-all" approach with GeneWise™ Rx, using genetic insights to reduce medication failures and side effects



#### Enhance Safety

Detect potential drug interactions and genetics risk, reducing harm, and boosting patient safety.



#### Improve Patient Outcomes

Personalize treatments to ensure the right medication, dose, and timing for each patient.



#### Cost-Effective Care

Save on medications, hospital visits, and extended treatments with more accurate treatment choices.

### Key Benefits for Pharmacists



#### Informed Decisions

PGx insights allow you to confidently select medications tailored to your patient's genetic profile.



#### Time Savings

Faster identification of effective therapies reduces the need for multiple treatment trials.



#### Enhanced Compliance

Improved treatment outcomes increase patient adherence and satisfaction



#### Comprehensive Reports

Receive easy-to-interpret reports with actionable recommendations.

GeneWise™ Rx can benefit Pharmacists across multiple areas including:

- ▲ Primary Care
- ▲ Pain Management
- ▲ Psychiatry
- ▲ Oncology
- ▲ Cardiology
- ▲ Neurology

# MPA AWARD WINNERS

**AWARDS WILL BE PRESENTED AT GENERAL SESSIONS  
AND THE PRESIDENT'S RECEPTION**

Years of Membership Awards

Pharmacy Hall of Honor Awards

Executive Board Service Awards

MPA Executive Board Chair Award

Fellow of Michigan Pharmacists  
Association Awards

Michigan Pharmacy Foundation Student  
Scholarship Program

Fred W. Arnold Public Relations Award

Distinguished Young Pharmacist Award  
presented by Pharmacists Mutual

Hae Mi Choe Excellence in Innovation Award

Executive Board Medal Award

Bowl of Hygeia Award

Pharmacist of the Year Award



# YEARS OF MEMBERSHIP

The Years of Membership Awards are given to honor and thank pharmacy professionals for their many years of continuous membership and dedicated service to the Michigan Pharmacists Association.

## 25-YEAR RECIPIENTS

Michelle Aultman  
Lisa Kay Ausmus  
John Brubaker  
Angela Faszczewski  
David Kalis  
David Keener

David Ling  
Gregory Pratt  
Carolyn Schmidt  
Curtis Smith  
Michael Toscano

25

## 40-YEAR RECIPIENTS

Sally Chan  
Michael Delpiere  
Sandra Dwyer  
Denise Hagerman  
Dianne Malburg

Vincent Michael Marinco, Sr.  
Neal Miller  
Glen Perry  
Sara Braun Peters  
Kyle Schafer

40

## 50-YEAR RECIPIENTS

Andrew Young  
Mark Rohde  
James Vander Linde  
Rodney LaPointe

Kathleen Brown  
Frederick Schmidt  
Doug Miller  
Gloria Jeszke

50



MICHIGAN PHARMACISTS ASSOCIATION

# PHARMACY HALL OF HONOR

The Pharmacy Hall of Honor was established by the Michigan Pharmacists Association (MPA) in 1986 to recognize members who have provided volunteer leadership in service to the Association by participating on Committees and in designated Association programs. Each year, qualifying members who have accumulated 500 points for their volunteer activities are inducted into the Hall of Honor. The recipient receives an exclusive lapel pin to signify the accomplishment.

## 2025 RECIPIENTS

Courtney Biehl  
Gary Blake

Ashley Blanchette

Tara McAlpine  
Maria Young

## PREVIOUS RECIPIENTS

<p><b>1986</b> Spencer J. Austin Alice Rice Brown Robert F. Commet R. Thomas Cook Donald A. Dee Henning W. Engmark Meyer Goldstein Merrill E. Gowman Elizabeth H. Greene Kenneth L. Koorhan Jack Kutnick Roland T. Lakey Eugene E. Land B. William Lewis Ian W. Mathison Thomas A. Needham Ara G. Paul Albert R. Pisa Fred A. Probst Robert L. Ravin Frederick L. Reinig Dewaine V. Robinson Jane L. Rogan Wynefred H. Schumann Louis M. Sesti Joseph A. Stark Ronald S. Swarthout Harry S. Swartz, Jr. Richard J. Wilson</p> <p><b>1987</b> Raina B. Bradley Morton Gameraan Robert C. Gifford Debra G. Goodman William H. Haitcho Ernest W. Koch Karen Lewis Moore Frederick E. Schmidt Charles A. Shane</p> <p><b>1988</b> James L. Clark Bruce C. Field Gregory R. Kivi Ronald H. Lukaszewicz G. Franklin Ochs Robert J. Phetteplace Nellie Davis Poulson Gerald R. Rodgers Larry D. Wagenknecht</p>	<p><b>1989</b> Jeffery S. Bismack Douglas S. Ettema John H. Fedorko Robert F. Hill Fred W. Kreye C. Pete Quisenberry John W. Spicer Richard C. Tuttle</p> <p><b>1990</b> Raymond E. Grzegorzcyk William R. Patterson Eric F. Ross Nancy J.W. Lewis</p> <p><b>1991</b> Robert C. Hamilton Richard L. Masse Sheldon J. Rich M. Kathleen Van Duyn</p> <p><b>1992</b> Paul W. Bush Gary W. Kadlec Jeff W. Rabinowitz Amy E. Smendik Deborah S. Wright</p> <p><b>1993</b> Grant H. Brown David K. Perkins John J. Tegel, Jr. James B. Vander Linde</p> <p><b>1994</b> Gregory J. Baran Gregory S. Bovee Ralph C. Heuerman Suzanne R. Lake Deborah J. Thulin</p> <p><b>1995</b> David S. Bach Douglas A. Miller</p> <p><b>1996</b> Suzanne J. Engemann Dianne E. Malburg Nancy J. Murray Thomas J. Schaut Andrew V. Young</p>	<p><b>1997</b> Keith A. Gaede Mary C. Reed Douglas A. Samojedny</p> <p><b>1998</b> William A. Green Paul B. Schmanskay</p> <p><b>1999</b> James J. Byington Beverly P. Kershaw Susan J. Klem John F. Ochs</p> <p><b>2000</b> Stephen R. Ehardt</p> <p><b>2001</b> Susan P. Arens Todd R. Raehtz Thomas N. VerHage Curtiss H. Whitaker</p> <p><b>2002</b> David V. Poirier Stephen C. Roell Roberta F. Skinner</p> <p><b>2003</b> Thomas D. Anderson Frank J. Ascione Bryan C. Cook Richard L. Lucarotti Kevin C. Pendleton Stephen T. Smith</p> <p><b>2004</b> Carrie S. Germain Rachel L. Henegar Joan M. Rider Joyce M. Rinke</p> <p><b>2005</b> Jeffrey A. Bates Sandra L. Chase Margo S. Farber Robert L. Hodges Karen A. Jonas Daniel J. Lobb Michael J. Sanborn</p>	<p><b>2006</b> Robert P. Coffey Susan E. Fehr Jesse H. Hogue William L. McCarthy Kathleen S. Pawlicki James W. Richards Larry K. Shoup Curtis L. Smith Kristine M. Stewart Dean A. Van Loo</p> <p><b>2007</b> Rosalie M. Baran Linda M. Branoff David R. Edwards Deborah S. McNutt John M. Mohler Jeffrey W. Rowe Rodney D. Sharp Beth Tomac Paul C. Walker</p> <p><b>2008</b> Stephen W. Durst Henry G. Fuhs, Jr. Charles W. Hastings James M. Lile Jennifer A. Prokopowicz Deborah A. Sopo Michael C. Toscano</p> <p><b>2009</b> Yvonne T. Gallagher Katina A. Kendall Joseph M. Leonard Ronald J. Melaragni</p> <p><b>2010</b> Terry J. Baumann James W. Bock Heather L. Rickle Donald R. Coon William Drake Thomas E. Fiebig Mark Isopi Doreen Kern Paul J. Munzenberger Claire E. Saadeh</p>	<p><b>2011</b> David J. Campana Stephen Czerkes Jean C. Lee Karen Woods Miron Jacqueline A. Morse Denise M. Pratt Jesse C. Vivian Frances H. Zalewski</p> <p><b>2012</b> Robert M. Armstrong Ryan J. Bickel John M. Brubaker Paul A. Jensen Cynthia Peitzsch Gregory A. Pratt Derek J. Quinn Harvey E. Schmidt Michael D. Tiberg</p> <p><b>2013</b> James F. Mezwicki JoAnn M. Sanborn Edward G. Szandzik Sandra C. Taylor</p> <p><b>2014</b> Shalonda L. Byrd Kathleen A. Jones Jeffrey A. Kauffman Michael E. Klepser Mark A. Rohde Patricia A. Smeelink Brian T. Swartz Stacey L. Uganski</p> <p><b>2015</b> Michael W. Crowe Jodie L. Elder Jennifer K. Hagerman Margaret A. Malovrh Christopher J. Maksym Lynette R. Moser Michael Ruffing Frank K. Zaran</p>	<p><b>2016</b> Mark D. Bomia Jonathan A. Grice Stephanie A. Klepser Gordon S. McNeill Lisa M. Meny Charles T. Mollien Robyn L. Parker</p> <p><b>2017</b> Michael L. Alverson Hope M. Broxterman Philip R. Dast Susan DeVuyst-Miller Cathleen M. Edick Angela Faszczewski David J. Kalis Sister Phyllis Klonowski Shawna L. Kraft Denise L. Markstom Michelle L. Dehoorne</p> <p><b>2018</b> Ghada Y. Abdallah Susan H. Erickson Nancy MacDonald Brooke R. Roe Heather M. Somand Michael D. Tiberg</p> <p><b>2019</b> Katie Axford Jessica Bessner David Bright John Clark Michael Delpiere Lindsey Ghiringhelli Ryan Greenley Sarah Hill Kari Vavra Janes Michael Kraft Stephanie LaPointe Franz Neubrecht Amy Roeder Eric Roath Kim Sveska</p> <p><b>2020</b> Carol Bugdalski-Stutrud Celia "Kae" French Curtis Collins Dana Staat Lisa Bade Rebecca Maynard</p>	<p><b>2021</b> Thomas Magnifico Lisa Ausmus Robin Curtis Stacy Brosseau Sarah Mahoney Michelle Kelly Adam King Kathleen Pawlicki Keith Kinion Julie Schmidt Angela Green</p> <p><b>2022</b> Terry Gottschall James Horton II Katie Wenstrom Jason Williamson</p> <p><b>2023</b> Joseph Fakhoury Sheroyl Kirby Amber Lanae Martirosov Douglas Miller Mary Beth O'Connell Heather Schalk Kyle Schmidt Jesse Shuster Sahar Swidan Jamie Tharp Thomas Tomaski</p> <p><b>2024</b> Chadi Abbas Courtney Doellner Nada Farhat Marc Guzzardo Melissa Lipari Insaf Mohammad Brittany Stewart Hanadi Thomas Dale Tucker</p>
--	---	---	---	--	---	---

# EXECUTIVE BOARD SERVICE AWARDS

The Executive Board Service Award honors outgoing Michigan Pharmacists Association Executive Board members for their service to the Association.



**SARAH HILL**  
Howell



**SARAH LERCHENFELDT**  
Rochester Hills



**MARIA YOUNG**  
Canton

# MPA EXECUTIVE BOARD CHAIR AWARD



**RYAN GREENLEY**  
Chassell

The MPA Executive Board Chair Award honors the outgoing MPA president for service provided to the Association.



## PREVIOUS RECIPIENTS

1882	W.B. Wilson	1906	J.L. Wallace	1931	J.C. Dykema	1957	M. Wayne Campbell	1981	Kenneth L. Cook	2006	Sandra L. Chase
1882-83	F. Wells	1907	F.F. Bogart	1932	F.H. Taft	1958	Bert C. Brennan	1982	Richard C. Fitzpatrick	2007	Charles W. Hastings
1884	G.M. Crouter	1908	M.A. Jones	1933	D. Weaver	1959	Ernest H. Wolfe	1983	George C. Punches	2008	Ronald J. Melaragni
1885	H.J. Brown	1909	E.J. Rogers	1934	E.H. Mahar	1960	Charles W. Hahn	1984	G. Richard Krieger	2009	James B. Vander Linde
1886	F.J. Wurzburg	1910	F.F. Calkins	1935	B.S. Peck	1961	Richard J. Beissel	1985	Thomas A. Needham	2010	Stephen M. Czerkes
1887	A. Bassett	1911	F.W. Austin	1936	J. Maltas	1962	William B. Hennessey	1986	Raina B. Bradley	2011	Paul A. Jensen
1888	G. Gundrum	1912	H.R. Reichel	1937	A.A. Sprague	1963	Francis R. Kronner	1987	Robert J. Phetteplace	2012	Edward G. Szandzik
1889	F. Inglis	1913	D.G. Look	1938	C.B. Campbell	1964	Royce N. Kephart	1988	Douglas S. Ettema	2013	James W. Bock
1890	D.E. Prall	1914	G.W. Stevens	1939	M.N. Henry, Sr.	1965	Neal J. VanHafftem	1989	William R. Patterson	2014	Kathleen A. Jones
1891	H.G. Colman	1915-16	C.H. Jongejan	1940	P.L.P. McFarlane	1966	Richard J. Dillon	1990	Robert C. Hamilton	2015	Jennifer K. Hagerman
1892	S.F. Parkill	1917	P.A. Snowman	1941	J.L. Brown	1967	Charles C. Baumann	1991	Gary W. Kadlec	2016	Amy E. Smendik
1893	A.B. Stevens	1918	J.H. Webster	1942-43	O.C. Kuieck	1968	Bertram W. Flood	1992	David K. Perkins	2017	Jim Lile
1894	A.S. Parker	1919	C.F. Wilkinson	1944-45	William E. Dengler	1969	Lynn H. Cook	1993	Suzanne R. Lake-Willyard	2018	Sandra Taylor
1895	G.P. Ward	1920	J.A. Skinner	1946	W. Hudson Lamoreaux	1970	Robert M. Lambert	1994-95	Andrew V. Young	2019	Jessica Bessner
1896	E.F. Phillips	1921	J.G. Stekete	1947	John J. McKeighan, Sr.	1971	Maurice Q. Bectel	1996	Keith A. Gaede	2020	Charlie T. Mollien
1897	A.E. Webber	1922	G.H. Grommet	1948	J. Edward Richardson	1972	Tom D. Rowe	1997	Paul B. Schmanksy	2021	Heather L. Rickle
1898	J.L. Sourwine	1923	D.D. Alton	1949	Bert A. Robinson	1973	Robert J. Gillespie	1998	John F. Ochs	2022	Mike Crowe
1899	O. Eberbach	1924	J. Weisel	1950	Allan G. Weatherwax	1974	Thomas L. Walenta	1999	Stephen R. Ehardt	2023	Hope Broxterman
1900	C.F. Mann	1925	E.J. Fletcher	1951	Perry E. Converse	1975	John J. West	2000	Susan P. Arens	2024	Sarah Hill
1901	J.D. Muir	1926	D.W. Houser	1952	Russell V. Oosting	1976	Don F. Gould	2001	David V. Poirier		
1902	L.G. Moore	1927	J.H. Hurd	1953	Ralph A. Wilson	1977	Dewaine V. Robinson	2002	Kevin C. Pendleton		
1903	A.L. Walker	1928	J.M. Ciechanowsky	1954	David Karp	1978	William F. Adrian	2003	Joan M. Rider-Becker		
1904	W.A. Hall	1929	C.C. Jones	1955	Henry J. Maicki	1979	Terryll R. Ensign	2004	Michael J. Sanborn		
1905	J.O. Scholterbeck	1930	J.J. Watters	1956	Stanley M.J. Byington	1980	Gerald E. Bodendistel	2005	William L. McCarthy		

# FELLOW OF MICHIGAN PHARMACISTS ASSOCIATION

The designation Fellow of Michigan Pharmacists Association (MPA) recognizes the honorees' achievements and dedication to the practice of pharmacy and the community. This distinction signifies the recipients' actions well beyond regular pharmacy practice. The fellowship is divided into three areas: professional actions in practice, public service and Association participation, all of which help define a well-rounded pharmacist.

Recipients receive an exclusive lapel pin, a certificate and recognition in the *Michigan Pharmacist*.



**HOPE BROXTERMAN**  
Traverse City



**ASHLEY BUILTA**  
Brighton



**FARAH JALLOUL-RIZK**  
Dearborn Heights



**DANIEL LOBB**  
Westland



**DAVID MILLER**  
Alto



**ERIC ROATH**  
Haslett



**BRITTANY STEWART**  
Livonia

## PREVIOUS FELLOW OF MICHIGAN PHARMACISTS ASSOCIATION RECIPIENTS

Mona F. Abul-Husn  
Robert M. Armstrong  
Katie Axford  
Otto W. Bacon  
Lisa B. Bade  
Gregory J. Baran  
Rosalie M. Baran  
Jeffery A. Bates  
Susan L. Bathke  
Stephen D. Beckner  
Stuart J. Bergstein  
Alfred E. Berkowitz  
Ryan J. Bickel  
Courtney Biehl  
James W. Bock  
Harry L. Boesnecker  
Douglas W. Boucheay  
Gilbert F. Bowlby, Jr.  
Thomas Breeden  
David R. Bright  
Alice M. Brown  
Sara Brown  
Thomas C. Brown  
Carol Bugdalski-Stutrud  
Richard F. Burke  
Sandra L. Chase  
Curtis D. Collins  
Joseph C. Conger  
Robert L. Conway

Bryan C. Cook  
Kenneth L. Cook  
Michael W. Crowe  
James W. Culver  
Robin A. Curtis  
Donna J. Dancer  
Marlene Delp-Fichter  
Richard Dettloff  
Susan DeVuyst-Miller  
Larry C. Dittmar  
Richard A. Dolack  
William C. Drake  
Cathleen M. Edick  
Stephen R. Ehardt  
Waldo H. Ehnis  
Amy R. Ellis  
Suzanne J. Engemann  
Terry R. Ensign  
Kathleen M. Engstrom  
Bruce C. Field  
Peggy A. Frazier  
Henry G. Fuhs  
Patrick W. Gavin  
John C. Gawryk  
Carrie S. Germain  
Lindsey Ghiringhelli  
Hadar Granader  
Benjamin Greathouse  
John R. Gregersen

Ann M. Gregor  
Marc L. Guzzardo  
Bradley Haan  
Jennifer K. Hagerman  
Gene L. Hancock  
David M. Heckman  
Ralph C. Heuerman  
Dee K. Hewitt  
Robert F. Hill  
Sarah Hill  
Richard P. Hoffman  
Jesse H. Hogue  
Andrew R. Hulce  
David L. Jaspere  
Freddie Jones, Jr.  
Jerry W. Jones  
Arthur D. Jozefczyk  
Michelle J. Kelly  
Beverly Kershaw  
Ronald R. Knoth  
Robert E. Koch  
Renee R. Koski  
Larry Kowalsky  
Dick F. Kuschinsky  
Jack Kutnick  
Michael R. Labowitch  
Stephanie L. LaPointe  
Joseph M. Leonard  
Timothy J. Lieverdink

Jerry Light  
James M. Lile  
David L. Loudenslager  
Marsha A. Lynn  
Thomas A. Magnifico  
Miranda Maitland  
Dianne E. Malburg  
Carl L. Malkewitz  
Margaret A. Malovrh  
Carl J. Maness  
Kerry F. Manseau  
William M. McAllister  
Percy R. McClain  
Donald E. Melcher  
Lisa A. Meny  
Kip J. Meroz  
Paul G. Miller, Jr.  
Karen Woods Miron  
Kymberlee A. Moline  
Charles T. Mollien  
Karen Lewis-Moore  
Jacqueline A. Morse  
Frederick W. Nelson  
Franz Neubrecht  
Charles H. Newman  
William R. Patterson  
Stephen J. Pawloski  
Kevin C. Pendleton  
Clifford J. Pfaff

Gregory A. Pratt  
George C. Punches  
C. Pete Quisenberry  
Michael S. Randazzo  
Scott A. Rayl  
Carol Raznik  
Sheldon J. Rich  
Heather L. Rickle  
Joan M. Rider  
David A. Ridout  
Beryl E. Rigel  
William C. Robinson  
Brooke Roe  
Karl H. Roth  
JoAnn M. Sanborn  
Michael J. Sanborn  
Heather M. Schalk  
Donald L. Schepperley  
Frederick E. Schmidt  
Harvey E. Schmidt  
Dennis J. Schumaker  
Charles A. Shane  
Gerard J. Shaw  
Roberta F. Skinner  
Amy E. Smendik  
Curtis L. Smith  
Deborah A. Smith  
Stephen T. Smith  
Deborah A. Sopo

Joseph A. Stark  
Jeffrey K. Steffey  
Robert L. Stevens  
Brian T. Swartz  
Sahar Z. Swidan  
John J. Tegel  
Robert D. Todd  
Dale A. Tucker  
James B. Vander Linde  
Andrea S. Vivian  
Jesse C. Vivian  
Sarah E. Vordenberg  
Larry D. Wagenknecht  
Joseph G. Ward  
Paul C. Walker  
Allan G. Weatherwax  
Dennis V. Wilbee  
Jason Williamson  
Daniel W. Witham  
Donald F. Wojack  
Harry R. Woolhiser  
Joseph J. Wuis  
Henry Yee  
Andrew V. Young  
Louis O. Zande  
Frank K. Zaran

# MICHIGAN PHARMACY FOUNDATION STUDENT SCHOLARSHIP PROGRAM

The Michigan Pharmacy Foundation (MPF) is proud to recognize exceptional student pharmacists during the Michigan Pharmacists Association (MPA) Annual Convention & Exposition. Each year, a \$3,000 scholarship is awarded to at least one student pharmacist at each of Michigan's three colleges of pharmacy. The Larry Wagenknecht Leadership Scholarship is a \$3,500 scholarship established in 2021. Since 2002, MPF has awarded more than \$150,000 in scholarships to deserving future practitioners.



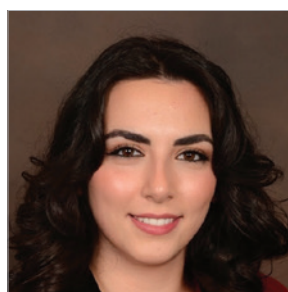
**MICAIYAH WHITAKER**

Lake Orion



**REBECCA BOVEE**

DeWitt



**AIYAT ALI**

Ann Arbor



**GRETCHEN EICKELBERG**

Macomb



## PREVIOUS RECIPIENTS

### 2014

Erica Asaro, Ferris State University  
Deven M. Millay, University of Michigan  
Peter A. Szatkowski, Wayne State University

### 2015

Lauren M. Steinhaus, Ferris State  
Emily A. Belarski, University of Michigan  
Victor B. Nguyen, Wayne State University

### 2016

Bradley P. St. Pierre, Ferris State University  
Jerika V. Nguyen, University of Michigan  
Linda A. Arrabi, Wayne State University

### 2017

Allison Bouwma, Ferris State University  
Emily K. Hoylman, University of Michigan  
Linda A. Arrabi, Wayne State University

### 2018

Dylan Kosaski, Ferris State University  
Jean Huang, University of Michigan  
Benjamin August, Stephanie Gryebet and  
Andrew Stone, Wayne State University

### 2019

Jessica Andrews, Wayne State University  
Ramy Mana, Wayne State University  
Jessica Gierka, Ferris State University  
Kirsten Smith, University of Michigan

### 2020

Kristin Khoshaba, Wayne State University  
Amber Duche, Ferris State University  
Zaid Simon Yousif, University of Michigan  
Nicole Farah, University of Michigan,  
Larry Wagenknecht Leadership Scholarship

### 2021

Kiara Torres Garcia, Ferris State University,  
Larry Wagenknecht Leadership Scholarship  
Maria Gonzalez Chavez, Ferris State University  
Ranem Kishmish, Wayne State University  
Drew Mason, University of Michigan

### 2022

Macy Terese Shupp, Wayne State University  
Maria Gonzalez Chavez, Ferris State University  
Carleigh Robinson, University of Michigan  
Katherine Bromm, University of Michigan  
Larry Wagenknecht Leadership Scholarship

### 2023

Shannon Habba, Wayne State University  
Hanna Bronz, Ferris State University  
Mary Westover, University of Michigan  
Joseph Paul Javier, Wayne State University,  
Larry Wagenknecht Leadership Scholarship

### 2024

Kayla Craig, Wayne State University  
Tiasha Nandi, Ferris State University  
Carleigh Hendrickson, University of Michigan  
Shannon Habba, Wayne State University,  
Larry Wagenknecht Leadership Scholarship

# MPF DONATION DRIVE

**\$5,000 GOAL  
THANK YOU!**

**Goal:  
250+ Donors**



The Michigan Pharmacy Foundation (MPF) is holding a donation drive during this year's Annual Convention & Exposition. The Foundation supports scholarships, leadership development training, and grant opportunities for underserved communities.

Funds raised in this drive will support these activities and, through them, its mission **"To Foster the Future of Pharmacy"**.

**Donate today to the MPF to invest in the Foundation's vision of:  
"One Pharmacy Profession, Maximizing Health and Wellness".**



MICHIGAN PHARMACY  
**FOUNDATION**  
**FRIEND OF THE FOUNDATION**

**DONATE2MFP.ORG**



# CRESEMBA<sup>®</sup>

(isavuconazonium sulfate)

372 mg for injection

74.5 mg · 186 mg capsules

# FRED W. ARNOLD PUBLIC RELATIONS AWARD



**VALERIE KELLEY-BONNER**  
Belleville

This award is presented to a Michigan Pharmacists Association (MPA) member or team of MPA members who have shown outstanding achievement and dedication to the pharmacy profession through community education and awareness.

Valerie Kelley-Bonner is a community advocate, consultant and nonprofit leader dedicated to advancing prevention, harm reduction and trauma-informed care for youth and marginalized communities in Metro Detroit. She is the founder of Strategic Transitions Consulting and a key leader with Strategies to Overcome Obstacles and Avoid Recidivism, where she develops and implements programs focused on substance use prevention, HIV awareness, youth violence prevention and intergenerational healing.

With over 20 years of experience in community engagement and systems-level collaboration, Kelly-Bonner works at the intersection of public health, social justice and education. Her work emphasizes culturally responsive programming, lived-experience leadership and practical solutions that bridge gaps between institutions and the communities they serve.

Kelly-Bonner is also a storyteller and creative voice behind projects such as Sister Heal: It's Time to Keep It Real, using narrative and dialogue to spark healing, accountability and transformation. Her mission is to turn pain into purpose and policy into people-centered practice.

## PREVIOUS RECIPIENTS

1996 Gerald Rodgers	2004 Todd J. Miehle	2010 Tami L. Remington	2018 Libin Philip
1997 Gregory A. Pratt	2005 Lori Roark	2011 Patricia A. Smeelink	2019 Robin A. Curtis
1998 Ralph C. Heuerman	2006 James W. Bock	2012 Maria C. Young	2020 Austin P. Brown
1999 Ann P. Kluck	2007 Capital Area Pharmacists Association	2013 Thomas R. Bahra	2021 Mary Beth O'Connell
2000 Marlene Delp-Fichter	2008 MPA-Upper Peninsula Division	2014 Sarah E. (Hill) Kirk	2022 Rony Foumia
2001 James E. Myers	2009 Timothy M. Stiff	2015 Beth A. Tomac	2023 Elaine Bailey
2002 Jon G. Comden		2016 Michael C. Toscano	2024 Nada Farhat
2003 Renee R. Koski		2017 Saad R. Shafie	2025 Lambda Kappa Sigma



**2026 ANNUAL CONVENTION & EXPOSITION**  
FRIDAY, APRIL 17 – SUNDAY, APRIL 19

# DISTINGUISHED YOUNG PHARMACIST AWARD



**SARA BROWN**

Lowell

The Pharmacists Mutual™ Distinguished Young Pharmacist Award is presented annually to an MPA member pharmacist who has been licensed to practice for less than 10 years and participates in local, state and national pharmacy associations, professional programs and/or community service.

Sara Brown has been an active, engaged member of the Michigan Pharmacists Association, contributing her time, knowledge and leadership to advance the profession. As a pharmacy supervisor, she has implemented systems and practices that have improved patient care, enhanced safety and expanded the pharmacist's role as a vital health care provider.

Beyond her professional accomplishments, her story is one of remarkable courage and perseverance. In 2025, she suffered a life-altering stroke, forcing her to relearn how to walk and talk. Her journey – publicly shared to inspire others – has been a testament to her resilience and determination. Even during recovery, Brown has remained committed to pharmacy and to mentoring colleagues, modeling what it means to serve with both skill and heart.

Brown has participated in community health initiatives, patient education programs, and advocacy efforts aimed at improving health care access and outcomes.

## PREVIOUS RECIPIENTS

1987 Susan P. Arens	1997 Karen A. Jonas	2007 Jodie L. Bakus	2017 Amber Lanae Martirosov
1988 Amy E. Smendik	1998 Carol J. Maurer	2008 Ryan J. Bickel	2018 Hope M. Broxterman
1989 Deanna F. Groeneweg	1999 Suzanne Nadra Havican	2009 Jennifer K. Hagerman	2019 Katie L. Axford
1990 Sheldon J. Rich	2000 Heather Fredell	2010 Charles T. Mollien	2020 Susan DeVuyt-Miller
1991 David S. Bach	2001 Dean A. Van Loo	2011 Heather M. Schalk	2021 Jason Williamson
1992 Dianne E. Malburg	2002 Cambria M. DeHoag	2012 Michael W. Crowe	2022 Eric Roath
1993 Gregory A. Pratt	2003 Stacey L. Uganski	2013 Lisa M. Meny	2023 Farah Jalloul
1994 Ann M. Reeves	2004 Kerry L. Tedesco	2014 Jessica M. Bessner	2024 Brooke Roe
1995 Diedre A. Briegel	2005 Marcia D'Alcorn	2015 Sarah E. (Hill) Kirk	2025 Mike Nabolsi
1996 Brian J. Prather	2006 Jesse H. Hogue	2016 Jacqueline A. Morse	



# HAE MI CHOE EXCELLENCE IN INNOVATION AWARD



YESRX

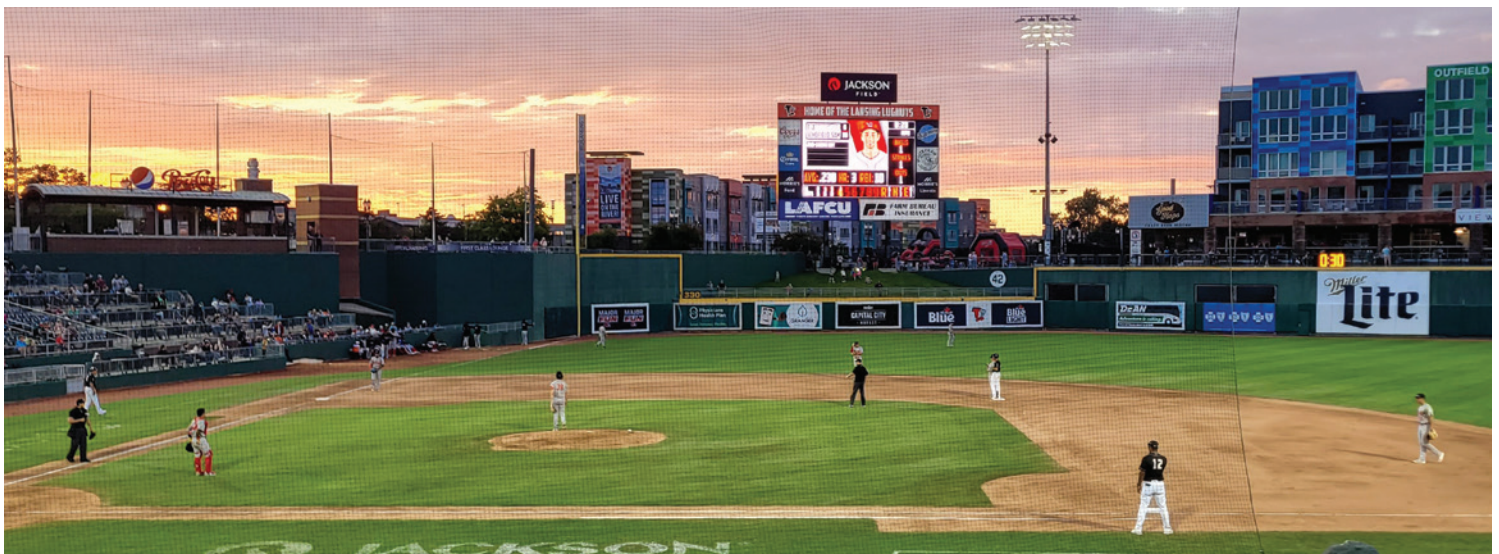
The Hae Mi Choe Excellence in Innovation Award is presented annually to an individual or team that has demonstrated an innovative pharmacy practice program, resulting in improved patient care or safety, advancement of the profession, enhanced systems, or other professional development.

YesRx is a non-profit service organization founded in 2023 by Farah Jalloul-Rizk, Emily Mackler, and Siobhan Norman to eliminate cancer medication waste and improve cancer medication access to Michigan residents in need. YesRx has innovated cancer care delivery by forming the YesRx Network, an interconnected community of over 130 cancer care sites working together to deliver cancer drug repository programming to patients in need of help getting their medication and individuals who desire to donate unused medication to others.

In less than three years, YesRx has created the most active cancer drug repository program in the country, benefiting over 4,000 Michigan residents with free cancer medication and preventing over 150,000 cancer pills from being wasted.

## PREVIOUS RECIPIENTS

1995 Grant H. Brown	2006 Leslie A. Shimp	2016 Detroit Medical Center Pharmacy Team
1996 Gregory S. Bovee	2007 William Drake	2017 Andrew J. Reeves
1997 Mark Touchette David B. Wright	2008 Kevin J. Roeder	2018 Gregory A. Pratt
1998 Michael E. Collins	2009 Harvey E. Schmidt	2019 Curtis D. Collins
1999 Philip R. Hagerman	2010 Craig J. & Mary E. Rapin	2020 David R. Bright
2000 James L. Clark	2011 University of Michigan Patient-Centered Medical Home Pharmacists	2021 Meijer Pharmacy Team
2001 William A. Green	2012 Cathleen M. Edick Christopher Smith	2022 Maria Young
2002 Sahar Z. Swidan	2013 Kathleen M. Brown	2023 Ferris State Collaboration to Harmonize Antimicrobial Registry Measures Project (CHARM)
2003 James M. Lile Kevin G. Przybylski	2014 Michael E. Klepser	2024 Amber Lanae Martirosov
2004 Hae Mi Choe	2015 James G. Stevenson	2025 Curtis Collins
2005 Sarah R. Lessard		



# EXECUTIVE BOARD MEDAL



**MARY BETH O'CONNELL**  
Waterford

The Executive Board Medal Award is given annually to an individual who has demonstrated an extraordinary personal commitment to the Michigan Pharmacists Association (MPA). The award was developed to recognize individuals who have been instrumental to the Executive Board and to the Association in advancing pharmacy's agenda.

Mary Beth O'Connell is a professor emerita in the Pharmacy Practice Department at the Wayne State University Eugene Applebaum College of Pharmacy and Health Sciences.

O'Connell has long been a leading advocate for women's health and pharmacy practice advancement. She has volunteered her time serving on MPA's Government Affairs Committee (GAC) and as an Oakland County Pharmacists Association delegate for the MPA House of Delegates for many years, helping to pass important resolutions to be considered by the Executive Board. Her consistent participation in these initiatives demonstrates her commitment not only to policy change at the state level, but also to ensuring that the collective voice of community pharmacists is heard.

In 2024 and 2025, O'Connell worked with the Wayne State Chapter of Lambda Kappa Sigma to organize an advocacy campaign in conjunction with MPA that led to passage of House Bills 5435 and 5436, which allows pharmacists to directly prescribe and dispense contraceptives to patients.

## PREVIOUS RECIPIENTS

1978	Rollin R. Hammerberg	1990	Olivia P. Maynard	2003	Mickey Mortimer	2013	Susan M. Moran
1979	Beverly A. Harter	1991	Harry S. Swartz (posthumously)	2004	Dewaine V. Robinson	2014	Sen. Bruce Caswell
1980	Patrick L. McKercher David A. Ridout	1992	Robert L. Ravin	2005	Jay Duprey	2015	Brenda J. Wagenknecht-Ivey
1981	Mary James	1993	Herman Fishman	2006	Larry K. Shoup	2016	Sen. Mike Green
1982	William F. Adrian	1994	Gary W. Kadlec	2007	Rep. Scott Hummel Secretary of State	2017	Donald Klepser
1983	Henry G. Fuhs, Jr.	1996	Mat Dunaskiss		Terri Lynn Land Rep. Gary Newell	2018	Mike Anderson
1984	Thomas L. Walenta	1997	Louis M. Sesti	2008	Yvonne T. Gallagher	2019	David R. Neff
1985	Robert A. Zustiak	1998	Deborah J. Thulin	2009	Stephen W. Durst	2020	Rep. Hank Vaupel
1986	Frank J. Ascione	1999	Robert E. Ludlum	2010	Janet Olszewski	2021	Rep. Mary Whiteford
1987	Phil Arthurhultz	2000	Ronald H. Lukaszewicz	2011	Ian W. Mathison	2022	Ghada Abdallah
1988	Bruce C. Field	2001	Pamela L. Farley	2012	Sen. Roger Kahn	2023	Dianne Malburg
1989	James W. Richards	2002	Jesse C. Vivian			2024	Michael Toscano
						2025	Charlie Mollien



# BOWL OF HYGEIA AWARD



**THOMAS ROLANDS**

Troy

The Bowl of Hygeia derives its name from the Greek goddess of the same name, who was the goddess of health, cleanliness and hygiene. The Bowl of Hygeia Award is given to a pharmacist who has made outstanding professional contributions and has participated in community or governmental activities that reflect well on the profession.

Tom Rolands has been a practicing pharmacist for nearly 60 years, graduating in one of the first classes at Wayne State University. He has also been an active member of MPA, Phi Delta Chi Professional Pharmacy Fraternity and the Wayne State University Pharmacy Alumni Association for close to 60 years.

His career started in hospital pharmacy and he received a Master of Science in hospital pharmacy in 1973. In 1976, he became the owner of Wood Drugs in northwest Detroit for more than 22 years. During this time, he was a preceptor in the then relatively new Wayne State University Externship Program. Student participants in the externship program would rotate to his community pharmacy site for 10 weeks. Nearly 100 pharmacy students passed through his doors during those 22 years.

Later in his career, he opened and started Value Center Pharmacy in Madison Heights. Here, he again served as a mentor to many student pharmacists, as well as foreign pharmacy graduates seeking licensure in the United States.

Rolands was also a long-time volunteer at the Cabrini Clinic in Detroit, the oldest free clinic in the country.

## PREVIOUS RECIPIENTS

1959 M. A. McKeith	1976 Joseph Grimaudo	1993 Peggy A. Frazier	2010 Michael J. Sanborn
1960 Norbert Wegemer	1977 R. Charles Osburn	1994 Robert Lytle	2011 Sandra L. Chase
1961 Ben Peck	1978 Bruce E. Gillespie	1995 George C. Punches	2012 Gregory Baise
1962 Robert J. Gillespie	1979 Don F. Gould	1996 William R. Patterson	2013 Nancy J.W. Lewis
1963 Nellie Davis Poulsen	1980 Robert E. Ludlum	1997 Raina B. Bradley	2014 Joseph M. Leonard
1964 Raymond L. Baker	1981 Wilfred J. Arnes	1998 Robert R. Arfstrom	2015 Derek J. Quinn
1965 Carl Satow	1982 Bernard J. Victor	1999 Thomas J. Schaut	2016 Geralynn B. Smith
1966 Nina Buell	1983 Jane L. Rogan	2000 Eric S. Peterson	2017 Dennis R. Princing
1967 Richard P. Dillon	1984 Frederick W. Arnold	2001 Richard C. Tuttle	2018 Philip R. Hagerman
1968 John West	1985 Elliott Shepard	2002 Harvey E. Schmidt	2019 Gary W. Kadlec
1969 Eugene L. Dembicki	1986 Marlene Delp-Fichter	2003 Ronald S. Coleman	2020 Carrie S. Germain
1970 William H. Haithco	1987 Richard C. Fitzpatrick	2004 Karen Lewis Moore	2021 JoAnn Sanborn
1971 Clifford J. Pfaff	1988 Grant H. Brown	2005 Roberta M. Armstrong	2022 Richard Lucarotti
1972 Donald L. Ekdom	1989 Ernest W. Koch	2006 Patrick L. McKercher	2023 Heidi Diez
1973 William F. Adrian	1990 Elizabeth Greene-Wize	2007 James W. Bock	2024 Douglas Samojedny
1974 Howard Dell	1991 Ralph C. Heurerman	2008 Willie E. Flounory	2025 Farah Jalloul-Rizk
1975 Arthur Koorhan	1992 Kenneth L. Cook	2009 Sister Phyllis Klonowski	

**2026 ANNUAL CONVENTION & EXPOSITION**  
FRIDAY, APRIL 17 – SUNDAY, APRIL 19

# PHARMACIST OF THE YEAR AWARD



**HAE MI CHOE**  
Ann Arbor

The Michigan Pharmacists Association (MPA) Pharmacist of the Year Award is presented annually as the highest honor in Michigan pharmacy. This lifetime achievement honor is given to a pharmacist who demonstrates professional excellence and exemplary service to the profession in advancing public health at either the state or local level and displays all the traits and characteristics of someone with a true commitment to advancing the pharmacy profession and public health.

Hae Mi Choe was a visionary leader, innovator and tireless advocate for patients and pharmacy practice. Over the course of her distinguished career, she redefined the role of pharmacists in patient care, pioneering new models of ambulatory pharmacy practice and ensuring that pharmacists became essential members of the health care team.

As chief population health officer at Michigan Medicine and executive director of the Michigan Institute for Care Management and Transformation, Choe led transformative initiatives that integrated pharmacists into primary care and specialty care across Michigan Medicine and the state. Her leadership brought lasting improvements in medication management, chronic disease care and patient outcomes. Earlier in her career, she also held influential positions at the University of Michigan College of Pharmacy and Blue Cross Blue Shield of Michigan, where she advanced pharmacy's role in health care delivery.

Her excellence was recognized nationally, receiving numerous accolades including the ASHP Board of Directors Distinguished Leadership Award, the American Association of Colleges of Pharmacy Crystal APPLE Award, the Pinnacle Award from the American Pharmacists Association Foundation, and multiple honors from MPA, including the MSHP President's Award and the Excellence in Innovation Award.

A long-time member of MPA, Hae Mi sadly passed away last year after a battle with leukemia. She inspired all who knew her with her grace, generosity and unwavering commitment to making health care more accessible and equitable. She consistently led with empathy, always reminding her colleagues: "We need to make this easier for patients. Help me, help others."

## PREVIOUS RECIPIENTS

1966 Allan G. Weatherwax	1982 Nina Buell	1996 Bruce C. Field	2011 Curtis L. Smith
1967 William B. Hennessey	1982 Richard J. Beissel	1997 Gary W. Kadlec	2012 Ronald J. Melaragni
1968 Raymond Baker	1983 William F. Adrian	1998 Douglas A. Miller	2013 James B. Vander Linde
1969 Robert C. Johnson	1984 Wesley H. Stein	1999 Gregory S. Bovee	2014 Frank J. Ascione
1970 Robert R. Eldredge	1985 John W. West	2000 M. Kathleen Van Duynes	2015 John M. Mohler
1971 Dean Martin Barr	1986 Patrick L. McKercher	2001 Mary E. Burkhardt	2016 Jeffery M. Rowe
1972 James L. Hall	1987 Fred W. Arnold, Sr.	2002 Keith A. Gaede	2017 Carol A. Bugdalski-Stutrud
1973 Herman Fishman	1988 Wynefred H. Schumann	2003 William H. Haitlco	2018 Kathleen S. Pawlicki
1975 Tom D. Rowe	1989 David V. Poirier	2004 Andrew V. Young	2019 David J. Campana
1976 Maurice Q. Bectel	1990 Ronald H. Lukasiewicz	2005 Stephen R. Ehardt	2020 Edward G. Szandzik
1977 Lloyd A. Beemer	1991 Raina B. Bradley	2006 William Drake	2021 Margaret A. Malovrh
1978 Robert J. Gillespie	1992 Jesse C. Vivian	2007 Henry G. Fuhs, Jr.	2022 Paul C. Walker
1979 James W. Richards	1993 Jane L. Rogan	2008 Frederick E. Schmidt	2023 Lisa Bade
1980 Dewaine V. Robinson	1994 G. Richard Krieger	2009 James G. Stevenson	2024 Larry Wagenknecht
1981 Lawrence L. Stewart	1995 Richard C. Fitzpatrick	2010 Harvey E. Schmidt	2025 Jesse Hogue



# OTHER 2025-26 AWARDS

Please congratulate the following award recipients recognized at other events.



**Michigan Society of Community Pharmacists (MSCP)**  
Pharmacist of the Year Award



**JORDAN MARCHETTI**  
Iron Mountain



**Michigan Society of Pharmacy Technicians (MSPT)**  
Pharmacy Technician of the Year



**ANTHONY CODREAN**  
Lake Orion



**Michigan Society of Pharmacy Technicians (MSPT)**  
Service Award



**KEITH BINION**  
Harper Woods



**Michigan Society of Health-System Pharmacists (MSHP)**  
Pharmacist of the Year Award



**EDWARD SZANDZIK**  
Grosse Pointe Woods



**Consultant and Specialty Pharmacists of Michigan (CSPM)**  
Pharmacist of the Year Award



**JOHN MOHLER**  
Marengo

**2026 ANNUAL CONVENTION & EXPOSITION**  
FRIDAY, APRIL 17 – SUNDAY, APRIL 19

# OTHER 2025-26 AWARDS

## Senator of the Year Award



**SEN. KEVIN HERTEL**  
Senate District 12

## Good Public Health Policy Award



**DR. NATASHA BAGDASARIAN**  
State of Michigan Chief Medical Executive

## Representative of the Year Award



**REP. TOM KUNSE**  
House District 100

## Ernie Koch Striving for Excellence Award



**GREG BAISE**  
Detroit

## Hank Fuhs Good Government Award



**HARVEY SCHMIDT**  
Tecumseh

## Distinguished Local Association Achievement Award

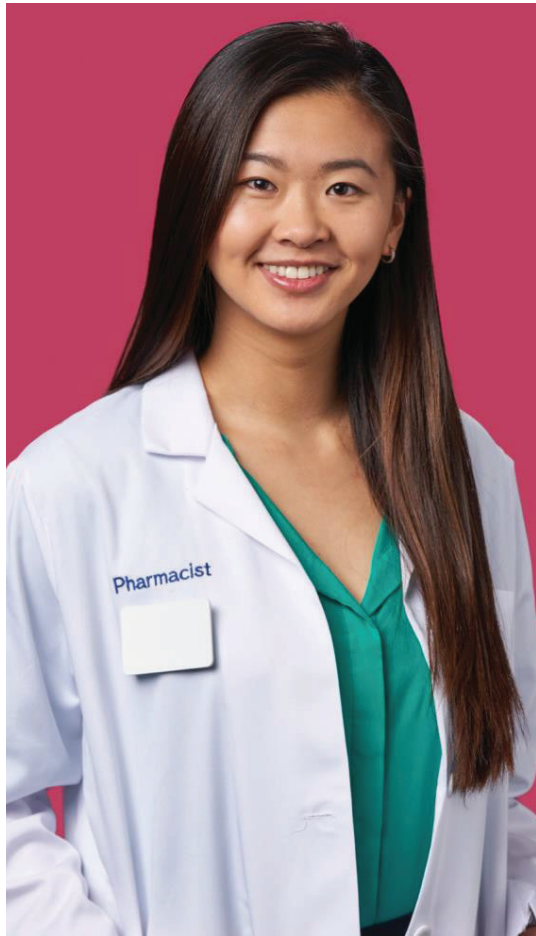


## Local Association Achievement Award

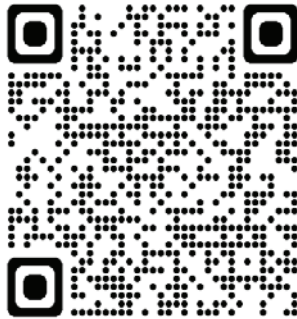
- Capital Area Pharmacists Association
- Genesee County Pharmacists Association
- Great Lakes Bay Pharmacy Association
- Kent County Pharmacists Association
- MPA Upper Peninsula Division
- Oakland County Pharmacists Association
- Southwest Michigan Pharmacists Association
- Wayne County Pharmacists Association
- Western Michigan Pharmacy Association



MICHIGAN PHARMACISTS ASSOCIATION



# JOIN THE KROGER HEALTH TEAM



Scan the QR code or visit [krogerfamilycareers.com](https://www.krogerfamilycareers.com) to apply now.

Once you've submitted your application, email your resume to [MIPharmacyDept@Kroger.com](mailto:MIPharmacyDept@Kroger.com) and mention your referral from the MPA.

Feed  
Your  
Future



## DISCOVER

**JOURNAVX**<sup>®</sup>  
(suzetrigine) 50mg tablet



VISIT  
[JOURNAVXHCP.COM](https://www.journavxhcp.com)



IF YOU ARE A FORMULARY DECISION-MAKER,  
PLEASE FIND ADDITIONAL RESOURCES AT  
[FORMULARYDECISIONS.COM](https://www.formularydecisions.com)



JOURNAVX is manufactured for Vertex Pharmaceuticals Incorporated. JOURNAVX, the JOURNAVX logo, Vertex, and the Vertex triangle logo are registered trademarks of Vertex Pharmaceuticals Incorporated.  
© 2026 Vertex Pharmaceuticals Incorporated | VXR-US-43-2500258 (v2.0) | 03/2026



# MPA Returns to the Capital City in 2027!

MPA's Annual Convention & Exposition (ACE) will return to Lansing in 2027!  
Registration will open in early 2027, so save the date and don't forget to  
join us April 16-18, 2027, at the Lansing Center.

See you next year!





**Your business is too important to risk.**

*Protect your bottom line and reputation with Pharmacists Mutual.*

These days, it sometimes seems impossible to protect your pharmacy from the unexpected. But when you partner with the industry experts at Pharmacists Mutual, you get peace of mind with a personalized policy that's custom fit for your business and budget.

Insurance coverage is developed by industry experts including on staff pharmacists who know the value of your work, and most importantly, understand the business behind it.



To speak to an expert

📞 800.247.5930

🌐 [phmic.com/RX-owner](https://phmic.com/RX-owner)

©2024 Pharmacists Mutual Insurance Company. All rights reserved. See policy for full description of coverages. As part of a marketing partnership, this is a compensated endorsement from Michigan Pharmacists Association.