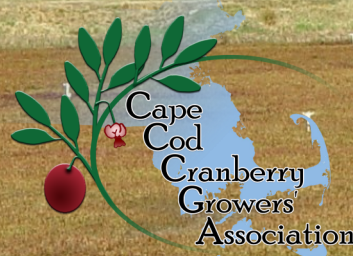


BOGSIDE

April 2024



WELCOME KAREN

On Monday, April 8, CCCGA welcomed Karen Cahill to the staff as our new deputy executive director. Some of you may know her as the Cranberry Marketing Committee's former director of marketing. With CMC closing, Karen is grateful for the opportunity to remain in the cranberry industry and continue to support Massachusetts growers.

The youngest of seven children, Karen grew up on the south shore of Massachusetts, attended college in Virginia, spent a few years in Georgia and now resides in Rhode Island. At the University of Richmond, she studied journalism and philosophy, was an award-winning writer and editor for the school's weekly newspaper, and played on the women's club rugby and ultimate Frisbee teams.

With more than 20 years of experience in strategic marketing, branding, and communications, Karen has helped various organizations enhance their images, reputations, and relationships with target markets. She has a proven record of delivering high-impact campaigns that generate strong return on investment and customer loyalty, as demonstrated by her work with the Cranberry Marketing Committee during the last 9 years.

At CCCGA, Karen's focus will be on building out and implementing the strategic communications plan, including informing and engaging residents, students, visitors, organizations, businesses and local governments with positive Massachusetts cranberries messaging.

Outside of work, Karen's arthritis-riddled body enjoys low-impact activities like biking, kayaking, and golfing. She is an avid Boston sports fan and enjoys traveling as frequently as possible. Along with Karen comes CCCGA's new office dog, Molly (see page 28).



CCCGA BOARD OF DIRECTORS

PRESIDENT

JOHN MASON

2ND VICE PRESIDENT

STEVE WARD

1ST VICE PRESIDENT

SCOTT HANNULA

SECRETARY/TREASURER

BRENDAN MOQUIN

DIRECTORS

MATT BEATON

JIM HAYWARD

JON JAFFE

KEITH MANN

GLENN REID

ROB RUBINI

HILARY SANDLER

SARAH STEARNS

ERIC WESTON

CCCGA OFFICE TEAM

BRIAN WICK

EXECUTIVE DIRECTOR

BWICK@CRANBERRIES.ORG

KAREN CAHILL

EXECUTIVE DEPUTY DIRECTOR

KCAHILL@CRANBERRIES.ORG

PATTI SILVIA

MEMBER OUTREACH MANAGER

PSILVIA@CRANBERRIES.ORG

BONNIE SOULE

ASSOCIATION & GRANTS MANAGER

BSOULE@CRANBERRIES.ORG

DAWN GATES-ALLEN

SEASONAL BOGS ONLINE SUPPORT

DGATESALLEN@CRANBERRIES.ORG

MISSION STATEMENT:

"TO ENHANCE THE MASSACHUSETTS CRANBERRY INDUSTRY THROUGH THE VIABILITY AND SUSTAINABILITY OF THE CCCGA MEMBERSHIP."

CCCGA HOURS

MONDAY - FRIDAY

8:30 - 4:30



Welding Services

Cole's Mill Equipment Repair

508-789-0618

On site Heavy Truck & Equipment Repair

Andrew Cole - Owner • colesmillrepair@gmail.com

www.cmequipmentrepair.com

**THE BOGSIDE© NEWSLETTER IS A MEMBER ONLY SUBSCRIPTION
AND IS NOT TO BE REDISTRIBUTED WITHOUT PERMISSION.**

CHANGING ON THE FLY

BY: BRIAN WICK, EXECUTIVE DIRECTOR



The calendar turning to April brought CCCGA the good news of having Karen Cahill join us. You've probably read the article on the front page, detailing her background and plans for CCCGA. It's great to have her onboard and she has jumped right in, like she's been here for years. We welcome her enthusiasm and new ideas and are excited for what's to come. If you haven't met her yet, stop by the office and say "Hello"!

CCCGA recently received a Northeast Risk Management Education grant on farm succession planning. In the near future, we will be holding a workshop that covers a swath of information related to future planning. This will include financial planning, estate planning, insurance considerations, and bog restoration options. There will be further outreach and education as provided in the grant and a robust grower survey to accompany the effort.

The Farmland Valuation Advisory Commission has released the Chapter 61A values for FY25. Elsewhere in this newsletter is a chart with the rates. Unfortunately, the values went up 8.9% for cranberries, which is consistent with the rates for other sectors of agriculture. I took part in the deliberations, providing the committee with insights and discussion on the industry.

Work has started on the Cranberry Educational Center Feasibility and Design Grant. This project will evaluate different locations to determine if they may be viable to host this center. While site evaluation is going on, a business plan will be developed to determine if the center is financially sound. If all goes well, an architectural drawing of the center will be completed. At the conclusion of the project, if the business and feasibility plan are viable, one site will be identified and plans drawn. This will take many months to complete. Farm Crit East is leading the business plan portion of the project; Beals & Thomas will be looking at site plans, zoning, etc.; and Saltonstall Architects will be the architects for the project.

Remember, another round of Bog renovation grants have been announced. The per acre rate is again \$25,000 with an individual cap of \$125,000. Applications are due May 24 at 4:00 PM. The "bog blurbs" part of this newsletter has a link for more information. Good luck to all those that apply. We thank the MA Department of Agricultural Resources and the Healey-Driscoll administration for their continued support of our growers and industry.

CRANBERRY BOOM

BEST IN THE BOG

TBC
Texas Boom Company

(844) 444-8144 | sales@texasboom.com | www.texasboom.com




**ONE
WILDLY
UNCOMMON
FAMILY**

CONTACT US AT GROWERRELATIONS@OCEANSPRAY.COM
OR CALL 1-800-334-4204



Grower Contact: Jonathan Ashley
Senior Manager Grower Relations
jonathan.ashley@refresco.com

LARCHMONT
IRRIGATION • DRAINAGE
PUMPS • LANDSCAPE LIGHTING

Lexington, MA Manchester, NH
781-862-2550 603-622-8825

SINCE 1949
SERVING THE GREEN INDUSTRY

- Irrigation Supplies
- Pump Stations & Supplies
- Drainage & More

Quality products from the leading manufacturers with unbeatable customer service and always the right price.

The exclusive Distributor of the original Cranberry Special
www.larchmont-eng.com

Wedding/Event Venue Needed!



Always thought that your farm would make a great venue, if so, we want to talk to you! We're a local family who would like to create a destination event venue for weddings, corporate outings, educational events, etc. Lease, purchase, or partnership possibilities. Our background is a combination of wedding and event planning, real estate development and construction. Seeking to work with a family that has the desire to protect their family legacy and continue to be a resource for their community.

Contact: Kacey Medeiros, kacey@lesucrebakeshop.com, 508-789-8140



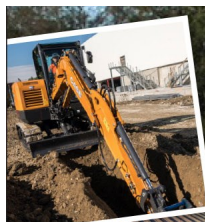
VISIT US AT
81 CHARLOTTE FURNACE RD.
WEST WAREHAM, MA

COMPETITIVELY SUPPLYING ALL OF YOUR GROWING NEEDS

Fertilizers & Chemicals • Irrigation Supplies
Pest Management • Safety Equipment • and more



WWW.PROGRESSIVEGROWER.COM
508-273-7358



Move water, clay, topsoil or sand.

We have the equipment for the job!

- Case and Case IH machines
- Late model, low hour rentals
- Parts for all makes, all models
- Field service when and where you need us

CASE
CONSTRUCTION

MT MONROE TRACTOR
we keep you working

97 Turnpike Road, Westborough, MA 01581
508.845.4343 • 866.590.2273

www.monroetractor.com



77 Charlotte Furnace Road
West Wareham, MA 02576

Peter Beaton: peter@beatonscgs.com

Rob Rubini: Rob@beatonscgs.com

- Bog Management
- Bog Renovation
- Herbicide / Fertilizer Applications
- Custom Harvesting
- Intergraded Pest Management
- Ditching/ Drainage
- Sanding
- Flume Repair/ Replacement
- Irrigation Installation
- Weeding/Wiping
- Custom Fabrication
- Pruning



**200 Merrimac Drive
Woburn, MA 01801**

www.cn-wood.com

DAN ROTT

781-315-1680

drott@cn-wood.com



P.A. Landers, Inc.

Serving Eastern Massachusetts Since 1978

PREMIUM BOG SAND

HANOVER · PLYMOUTH · FORESTDALE

MEETING THE NEEDS OF GROWERS EVERY SEASON OF THE YEAR

508-660-6404 · 781-826-8818

Monday - Friday 7AM - 5PM · Saturday 7AM - 12PM

BOG CONSTRUCTION · MATERIAL DELIVERY · EQUIPMENT RENTAL

Web-Based Irrigation Management



HORTAU
SIMPLIFIED IRRIGATION®

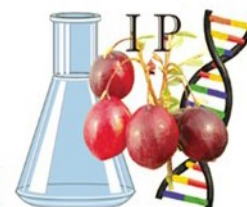
- Manage Crop Stress in Real Time
- Frost Protection and Mobile Alerts
- Remote Start and Automation
- Reduce Energy and Water Use
- Full Service and Support



For more information call (920) 246-9130 or visit hortau.com

INTTEGRITY **P**ROPAGATION

The Cranberry Industry's First and Only Foundation Level Nursery



TAKING ORDERS FOR 2024 & BEYOND

The source for Rutgers University Certified Varieties:

CRIMSON QUEEN® DEMORANVILLE® MULLICA QUEEN®

SCARLET KNIGHT® the fresh fruit variety, **WELKER™** recommended for the west coast,

HAINES™ Tested in advanced replicated trials in OR, WA and WI, plots exhibit:

- Berries with uniform full color even in deep canopies
- Disease resistance superior to Stevens
- Less fruit rot than Stevens in replicated field plots
- Consistent high yields
- Mid season ripening
- Round berry with high firmness perfect for SDC

and Dr. Vorsa's latest release:

VASANNA™ In OR, WA, WI and BC tested in replicated field trials exhibits:

- Mid-season good color
- Especially high yields in BC peat and WI sandy soils



Vigorous plants with multiple branches

Providing 100% 'DNA Fingerprinted', 'Virus Tested' and 'Phytoplasm Tested' Plant Material

Contact us at 609-573-1976, or email contact@integritypropagation.com

www.integritypropagation.com

APRIL IS VOLUNTEER MONTH – A PERFECT TIME TO CONSIDER SERVING ON ONE OF CCCGA'S COMMITTEES



- ENVIRONMENTAL + GOVERNMENT AFFAIRS
- FROST ADVISORY
- MARKETING + PROMOTION OUTREACH
- RESEARCH
- TECHNOLOGY

IF YOU ARE INTERESTED CONTACT 508-866-7878 OR INFO@CRANBERRIES.ORG

Hybrid Vines for Sale

Crimson King
Granite Red
BG

Pilgrim King
Midnight
Badgers

- All new varieties with unique traits and high yields
- No royalties on initial planting
- Breeding hybrid vines since 1974

EST 1882
VALLEY
CORPORATION

To order or arrange a summer variety tour,
Call Ed Grygleski at 608-387-9444 (Tomah WI)
Valley Corp is a family owned and operated cranberry farm since 1890

www.cranberryvine.com

IT MAY BE COMPACT,
BUT ITS REACH IS WORLDWIDE.



Step into a Kubota excavator and it's easy to see why it earned the title of #1 selling compact excavator in the world*. Six heating and cooling vents and an easy-open front window provide the kind of comfort that keeps operators in the cab and getting the work done. Minimum tail swing, industry-leading bucket breakout force and an optional quick coupler are just some of the additional features that give the Kubota compact excavator such a huge reputation.

SALES • SERVICE • PARTS • RENTALS



Your #1 source for Kubota products since 1979.

**45 North Main Street, Carver, MA
508-384-0011 • www.norfolkpower.com**

   KubotaUSA.com

*According to 2016 OEM Off-Highway Research, Kubota has the largest compact excavator market share in the world. ©Kubota Tractor Corporation, 2019.





A P R I L I S

NATIONAL VOLUNTEER MONTH



CCCGA would like to extend a heartfelt **THANK YOU** to all of our volunteers. We are grateful for your willingness to give of your time, energy and talents - and our tours and other events would not be possible without you.

If you are interested in volunteering in any capacity with CCCGA, email kcahill@cranberries.org

SOIL SOLUTIONS *for* HIGH PERFORMANCE LANDSCAPES



BOG MAINTENANCE
MATERIALS



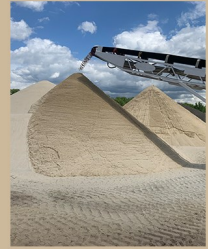
BOULDERS, STONE
AND ROCK SUPPLIES



BOG CONSTRUCTION AND
RENOVATION MATERIALS



STABILIZED STONEDUST®
FOR NATURAL ADA TRAILS



SCREENED AND
BANK SAND

CONSTRUCTION MATERIALS • BIORETENTION SOILS • TOPDRESSING SAND
ATHLETIC FIELDS • STABILIZED STONEDUST • PLANTING BED SOILS • GREEN ROOF MEDIA



Experience. Quality. Consistency.

CONTACT US FOR PRODUCT SPECIFICATIONS, TESTING
RESULTS, PROJECT ANALYSIS, AND PERSONALIZED QUOTES.

JUSTIN O'CONNOR

JUSTIN@READCUSTOMSOILS.COM

781.828.6300



READCUSTOMSOILS.COM



FARM CREDIT EAST



Farm Credit East is deeply rooted in our customers' success – and Northeast agriculture. In fact, no one knows ag quite as well as Farm Credit East. So if you're looking for financing or business services for your agricultural operation – of any size or type – look to Farm Credit East. Our mission is to grow your success.

FARM CREDITEAST.COM
508.946.4455

Loans and Leases
Tax Services
Payroll Services
Business Consulting
Record-keeping
Country Home Loans
FarmStart for New Businesses
Real Estate and Equipment Appraisals



IN MEMORIAM

REMEMBERING OUR CCCGA MEMBERS AND FAMILIES



Karen K. Barnes, 74, passed at home on March 20th. Karen was a nurse with a special devotion to Hospice care. Throughout her career, she volunteered at the Salvation Army, Booth Home and many other organizations. She was also the Director of the Carver VNA. Her passion for caring for others was her whole life.

She and her husband were the owners of Blue Heron Farms in Plympton and a major part of CCCGA for many years. Building strong relationships with other growers, hosting elected officials to Legislative Breakfast to educate the about farming needs.

Later she "retired" to Newport and Santa Fe volunteering to raise money to educate all children.

Karen leaves her loving husband, Wayne of 53 years. She also leaves her children Jules, and Erik, their spouses and her grandchildren.

Karen loved songs, sunsets, meals and hugs. She loved hard, welcoming and honoring everyone. She will truly be missed.

The service for Karen is Saturday, May 4 at Kempenaar's Clambake Club, 323 Valley Road, Middletown, RI. The wake is at 11:00, the service is 11:30 and the clambake at 1:00. All are welcome.



Find out what so many growers already know

- The Original and the Best for automation and monitoring
- Proudly made in Massachusetts
- The 1st choice for cranberry growers everywhere
- Reduce overhead, energy costs, water usage and monthly fees
- Own your system and avoid ever increasing lease payments
- Ask us about the ISM100 Soil Moisture Meter

Call us at 800-549-4551 or email: info@iassys.com to learn about our quantity discounts!



3 Marion Drive - Carver, MA 02330

508-866-9061



Peter Opachinski

Phone: 508-866-9061 x15

Cell: 508-958-6949

Fax: 508-866-9499

Peter@sltconstruction.net

Specialists in excavation and installation of any size or type of utility including:

Water•Drainage•Electrical•Telephone•Gravity Sewer Mains

Sewer Force Mains•Sewer Pump Stations

Additional Services Provided:

Site Development•Portable Screening•Heavy Equipment Rentals

Septic Systems•Waste Water Treatment Plants•Trucking

Low Bed Services•Retaining Wall Construction

**NOW OFFERING CRANBERRY BOG CONSTRUCTION
NOW PAYING TOP \$ FOR SAND, GRAVEL & FILL SOURCES**



BOGS | Online Grower System

THE ALL-IN-ONE TOOL FOR YOUR EVERYDAY GROWING NEEDS

- ***TRACK AND MANAGE PESTICIDE AND NUTRIENT APPLICATIONS***
- ***MAKE AND PRINT WORK ORDERS***
- ***GENERATE AND SEND WORK ORDERS DIRECTLY TO JBI***
- ***DOWNLOAD AND EXPORT PESTICIDE AND FERTILIZER APPLICATION DATA***
- ***RECORD VARIOUS FARM-LEVEL EXPENSES AND CALCULATE COST PER ACRE***
- ***STAY IN COMPLIANCE WITH STATE AND FEDERAL REPORTS***
- ***RECORD SAND USE, WATER USE, AND PRUNING EVENTS***
- ***GENERATE REI SIGN POSTINGS***

AND MORE!

AVAILABLE ON DESKTOP AND MOBILE DEVICE

Contact CCCGA at cccga@cranberries.org to learn more.



MASSEY FERGUSON

THE YEAR'S **BEST SAVINGS.**

Right now is the best time to save on a versatile Massey Ferguson® tractor that's as easy to operate as it is to maintain. Orlando's Garage has the best pricing and exclusive sales territory in Massachusetts.

- Get more power and performance in an efficient, compact footprint
- Easily handle the sharp corners and unique demands of your cranberry bogs
- Enjoy Massey Ferguson's legendary durability in harsh conditions



Don't miss our best deals of the year!

0% FOR **84**
FINANCING OFF*

ORLANDO'S
GARAGE

CALL NOW FOR A QUOTE.

508.384.3317 | OrlandosGarage.com
194 Dedham Street | Norfolk, MA

*On select models with approved credit from AGCO Finance, LLC. Contact your participating dealer for more details.
Offer ends soon and may be subject to change without notice.
©2024 AGCO Corporation. Massey Ferguson is a worldwide brand of AGCO Corporation. AGCO and Massey Ferguson are trademarks of AGCO. All rights reserved.



CROP INSURANCE

**"Family Owned and
Operated Since 1984"**

Arthur Carroll Insurance Agency

www.arthurcarrollcrop.com 877-283-6540

CHAPTER 61A LAND USE VALUES RELEASE

The Farmland Valuation Advisory Commission (FVAC) has released the land use values for Chapter 61A and related, for fiscal year 2025. For cranberries, the values have increased 8.9% from a year ago. This is consistent with the other sectors of ag land values, which saw an increase of 8.8% and an increase of 9.7% for nonproductive land. As always, be sure that your individual bogs are being placed in the correct yield category as there are 5 different bands of cranberry production values. Some towns may default to the highest yield category. Providing the most accurate data when submitting your annual Ch. 61A applications may help eliminate this from occurring.



Geoffrey E. Snyder
Commissioner of Revenue

Sean R. Cronin
Senior Deputy Commissioner

FVAC CHAPTER LAND RECOMMENDED VALUE: FISCAL YEAR 2025 Per Acre Range of Values

Chapter Land 61 and 61A Use Categories	Productivity Based on Dominate Soil Ratings*			
	Use Code	Below Average	Average	Above Average
Cropland Harvested: Vegetables, Tobacco, Sod and Nursery	711, 712, 719	\$1,090	\$1,362	\$1,634
Cropland Harvested: Dairy, Beef and Hay; Tillable Forage Cropland, etc.	713	\$218	\$272	\$326
Cropland Harvested: Orchards, Vineyards, and Blueberries	714	\$1,090	\$1,362	\$1,634
Christmas Trees	602, 715	\$84	\$84	\$84
Nonproductive Land: Wetland, Scrub Land, Rock Land	720	\$68	\$68	\$68
Cropland Pastured; Permanent Pastured; Necessary and Related Land—Farm Roads, Ponds, etc.	716, 718	\$218	\$272	\$326
Productive Woodland; Land Use Categories – Chapter 61 Forest Land or 61A Land with a Forest Management Plan West of the Connecticut River	601, 717	\$67	\$84	\$101
Productive Woodland; Land Use Categories – Chapter 61 Forest Land or 61A Land with a Forest Management Plan East of the Connecticut River	601, 717	\$67	\$84	\$101

Use Code	Cranberry: Range of Production/Barrels per Acre				
710	≤102	102≤145	145≤171	171≤208	>208
Cranberry Values	\$1,061	\$1,415	\$1,769	\$2,123	\$2,477

- **Cropland Harvested** – This land represents the highest use of land in the agricultural enterprise. All land from which a crop was harvested, or hay was cut, in the current year falls into this category. This includes the land in vegetables, sod, nurseries, orchards, vineyards, other perennial plantings, and greenhouses.
- **Dairy, Beef and Hay; Cropland Pastured, Other Cropland & Permanent Pasture** – Cropland used for pasture or grazing, or land considered as tillable but is elected to be fallow or in cover crops. It can and often is used to produce crops, but its maximum income may not be realized in a particular year. This category also includes land planted in crops, which were to be harvested after the census year, and land is typically not tillable, best suited for grazing or possibly part of an erosion control program, plus necessary and related lands.
- **Nonproductive Land** – The land on the farm which is nonproductive primarily due to slope, drainage capacity, soil type or topography.

Supporting a Commonwealth of Communities

mass.gov/DLS
P.O. Box 9569 Boston, MA 02114-9569
(617) 626-2300

AG DAY AT THE STATEHOUSE



Excerpt from CCCGA's press release: Massachusetts Cranberries participated in Massachusetts Agriculture Day, declared the 2024 official celebration of the Commonwealth by MA Governor Maura Healey, marked on Tuesday, April 3, at the Massachusetts State House. The event, organized by the Massachusetts Farm Bureau Federation and MA Department of Agricultural Resources (MDAR), honored the agricultural industry by gathering farmers, producers, and commodity groups from across the state demonstrating the rich diversity of Commonwealth-grown products. Legislators and officials sampled local foods and learned about the challenges that farmers face in the current marketplace.

Massachusetts is the founder of the cultivation of cranberries, initiated on Cape Cod in 1816, serving as the second largest cranberry growing region in the country. The Commonwealth produces approximately 23% of the annual national crop. "Ag Day" is a tradition that showcases, to the State House and beyond, the rich and diverse agricultural community that is vital to the fabric of Massachusetts," shares Massachusetts Cranberries Executive Director Brian Wick. "Massachusetts Cranberries is proud to be part of this agricultural legacy and is thankful for the support of our legislative and state leaders." Leaders from the nonprofit stood united with other agricultural sector representatives including Massachusetts Dairy Farmers, Massachusetts Nursery and Landscape Association, New England Vegetable and Berry Growers' Association, Massachusetts Aquaculture Association, Massachusetts Cheese Guild, Massachusetts Maple Producers Association, Massachusetts Flower Growers' Association, Buy Local organizations, Massachusetts 4-H, Massachusetts Beekeepers Association, and many more.

Continued on next page:

Continued from previous page

Massachusetts Cranberries leadership spent the day meeting with MA legislators, visiting the office of House Speaker Ronald Mariano, Senate Joint Committee on Ways and Means Chair Mike Rodrigues, House Ways and Means Chair Aaron Michlewitz, Chair of the Joint Committee on Agriculture Paul Schmid, Acting Senate Chair of the Joint Committee on Agriculture Joanne Comerford, the staff of Senate President Karen Spilka, and spoke with Energy and Environmental Affairs Secretary Rebecca Tepper, MDAR Commissioner Ashley Randle, Senator Ed Markey, and Representative William Straus, among many others. Massachusetts Cranberries attendees handed out samples of sweetened dried cranberries, 100% cranberry juice and cranberry juice cocktail, while they discussed challenges and opportunities in the cranberry industry and interacted with other commodity groups.

During the celebration, Lieutenant Governor Kim Driscoll announced more than \$3 million in grants to support Massachusetts farmers through programs that improve composting efforts, food safety, cranberry bog restoration, stewardship, and business planning. MDAR Commissioner Randle also gathered 12 inaugural high school seniors as members of the newly formed Massachusetts Agricultural Youth Council. The Council plans to cultivate and foster the next generation of leaders in the agriculture industry in Massachusetts.



(L and R) Massachusetts Cranberries table at Massachusetts Agriculture Day drew many public officials and inquisitive visitors, all in support of the industry.



YOUR
SOLUTIONS
PARTNER



WHAT WE OFFER :

BEARINGS & PT PRODUCTS

ELECTRICAL & AUTOMATION
PRODUCTS

ENGINEERING &
VALUE ADDED SERVICES

INTEGRATED CONTROL
SYSTEMS

JOHN HALLISSEY
(508) 424-8498
jhallissey@bsc-ind.com

www.bsc-ind.com

Nutrien
Ag Solutions™

Profit from our Experience
For All Your
Chemical, Fertilizer,
& Nutritional Needs

It's time to get ready for
Spring Herbicide and
Early Season
Fertilizer Applications

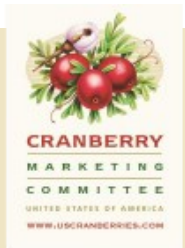
Jeff Utley
Operations Manager
(508) 866-4429

96 Forest St • N. Carver, MA 02330



UPDATES FROM THE CMC

BY: KAREN CAHILL



As of April 1, the CMC's website (www.uscranberries.com) and all social media accounts (@uscranberries) are now owned and operated by the Cranberry Institute.

Maximize the fruit of your labor.

- Committed to Massachusetts.
- Our agronomists work closely with our grower partners to improve yields.
- **We offer competitive pricing.**
- Our cranberries are processed in a new state-of-the-art facility.
- **Our agronomic programs help our grower partners obtain higher yields than the regional average.**

WE'RE CURRENTLY LOOKING TO **CONTRACT NEW ACRES.**

Contact James Ross, Grower Relations and Agronomy Manager:
774-435-0184 • jross@decascranberry.com



part of the
Fruit dOr group



FLOOD BOG.
DRIVE REELS.
CORRAL BERRIES.
EMPTY BOOTS.

You have your routine. We'll help you keep it.

For over 65 years, we've been a trusted insurer for farmers and growers in Massachusetts. Connect with your local agent, and see why we're ranked #1.*

www.AmericanNational.com/MassFarms



Official Insurance Sponsor of CCCGA

***2020 SNL MARKET SHARE DATA**

American National is a group of companies writing a broad array of insurance products and services. Products and services may not be available in all states. Terms, conditions and eligibility requirements will apply. Life insurance and annuity products may be underwritten by American National Insurance Company, Galveston, Texas. Property and casualty products and services may be underwritten by Farm Family Casualty Insurance Company, Glenmont, New York.

22-034-64-424845-922

THANK YOU TO OUR 2024
PESTICIDE WORKSHOP SPONSORS



HARVESTING THE PAST....

A HISTORICAL LOOK AT THE CRANBERRY INDUSTRY

BY: BONNIE SOULE



This month we jump back in time to 1959, the year Bert Tomlinson retired from his position as county agent of Barnstable County Extension Service.

You may ask "Why?" or "Who was he to cranberries?". Well, Bert was the first to start up local cranberry clubs on the Cape. The target goal was the growers in Barnstable County. But let's back up and see why.

Back in the late 1920s and early 1930s, the meetings of the Cape Cod Cranberry Growers Association were going strong, but Bert noticed that very few growers from Barnstable County would attend. So to "try to stimulate their interest in cranberries" he came up with the idea of having local meetings on the cape. He worked with local growers, and they developed the idea of organizing local cranberry clubs.

In 1935, the upper and lower Cape Cranberry Clubs were organized. They met in the evening and began with supper to allow for socializing time and then they moved to an education program. "These meetings were so popular that many of the growers came down from Plymouth County, and shortly thereafter, Cranberry Clubs were formed in that area." From there the idea caught on and soon there were Cranberry Clubs in New Jersey, Washington and Oregon as well.

What Mr. Tomlinson had expected to last for five or ten years, was still going strong 24 years later when he retired in 1959.

I hope you've enjoyed reading about the beginnings of the Cranberry Clubs. I'll be back again soon harvesting more of the cranberry industry from days gone by!

All images and archival text printed with permission from "Cranberries/Fruit Growers News"



CHIP MATHEWS

Director of Purchasing
P: (856) 455-1000, 7295
C: (410) 361-1310
chipmathews@lassonde.com

KATHLEEN PATTERSON

Plant Manager
P: (508) 866-4788, 15
kathleen.patterson@lassonde.com

QUALITY PRODUCTS GROWN BY INNOVATIVE THINKERS

BILL'S TRACTOR REPAIR

Servicing
Diesel and Gasoline
Engines
On Sight Repairs

Bill Alger
317 Elm Street
Kingston, MA 02364
Cell: 617-688-6961



BLOGS AND BLURBS



Cranberry Bog Renovation Grant Program

The Cranberry Bog Renovation Grant Program is a reimbursement grant program for the implementation of bog renovations that promote more efficient bogs both in design and production while enhancing the business and environmental sustainability of the cranberry operation.

Awards are limited to \$25,000 per acre up to a maximum of \$125,000.

Applications are due by 4PM on Friday, May 24th, 2024

Website: [Cranberry Bog Renovation Grant Program | Mass.gov](https://www.mass.gov/cranberry-bog-renovation-grant-program)

Contact: Laura Maul at Laura.Maul@mass.gov or (857) 507-5972

NRCS PROGRAM DEADLINES ANNOUNCED

[Environmental Quality Incentives Program \(EQIP\)](#) and the [Agricultural Management Assistance Program \(AMA\)](#) application ranking cutoff date is **May 10, 2024**.

BOG RENOVATION TAX CREDIT UPDATE

Tom Anderson, program manager of the Cranberry Bog Renovation Tax Credit program, has provided an update. He said that applications are still being accepted for renovation projects from calendar years 2024 and 2023. 2022 may still be accepted but you should call him first to discuss. He is working on credits from qualified 2023 applications since tax season is happening now. He's trying to work through as many of those as possible and then will be returning to any outstanding applications from previous tax years. Tom can be reached at thomas.anderson@state.ma.us or (617) 519-4587.

After 2024, the bog renovation tax credit program will expire. CCCGA is working to extend the program, which will take a legislative effort. We'll have more news on the success of this initiative in the coming months.

Agricultural Food Safety Improvement Program (AFSIP)

The Agricultural Food Safety Improvement Program (AFSIP) is a reimbursement grant program that supports produce and aquaculture operations that are looking to improve their food safety practices that work towards minimizing the risks of microbial contamination and food-borne illnesses while increasing market access.

Participants selected for funding are provided with reimbursement grants for 80% of total project costs up to \$50,000.

Applications are due by 4PM on Friday, May 24th, 2024

Website: [Agricultural Food Safety Improvement Program | Mass.gov](https://www.mass.gov/agricultural-food-safety-improvement-program)

Contact: Laura Maul at Laura.Maul@mass.gov or (857) 507-5972

Continued on next page:

BLOGS AND BLURBS CONTINUED

Continued from previous page:

Climate Smart Agriculture Program (CSAP)

The Climate Smart Agriculture Program links MDAR's water, energy and climate grants together into one application. This includes the Agricultural Climate Resiliency & Efficiencies (ACRE) Program, the Agricultural Environmental Enhancement Program (AEEP), and the Agricultural Energy Grant Program (ENER). This program continues the goals of the three individual grants by implementing projects that help the agricultural sector adapt to climate change, mitigate climate change, reducing or preventing impacts to natural resources that may result from agricultural practices, and that improve energy efficiency and facilitate adoption of alternative clean energy technologies.

The CSAP grant is broken into two sections. Section I: Environment is for environmental projects such as soil health, water use efficiency, or other projects working towards reducing or limiting greenhouse gas emissions. Section II: Energy is for Ag-Energy projects to improve energy efficiency or to facilitate clean energy adoption.

Applicants can apply to either or both sections.

Participants selected for funding under either section are provided with reimbursement grants for 80% of total project costs up to \$50,000.

Applications are due by 4PM on Friday, May 31st, 2024

Website: [Climate Smart for Agriculture Program | Mass.gov](https://www.mass.gov/info-details/climate-smart-for-agriculture-program)

Contact:

Section I: Environment - Laura Maul at Laura.Maul@mass.gov or (857) 507-5972

Section II: Energy - Gerry Palano at Gerald.Palano@mass.gov or (617) 571-4969

ATTENTION MIDDLEBORO RESIDENTS JOIN THE AGRICULTURAL COMMISSION!

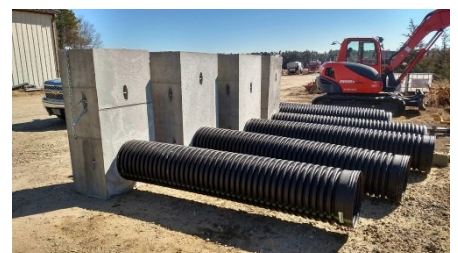
The Select Board is seeking applicants for several open seats on the Agricultural Commission. The Commission's mission is to promote farmland preservation, assist with livestock issues, encourage agricultural opportunities, and continue farming traditions in the community.

Interested candidates should send a letter of interest and any relevant experience to Colleen Lieb, Executive Assistant to the Select Board. Links can be found on the middleboroughma.gov website under Employment.

FLUMES FOR SALE

CONCRETE & ADS PIPE • INSTALLATION AVAILABLE

JOHNSON CRANBERRIES: 508-277-7035



LET'S TRY SOME CRANBERRY SWIRL CHEESECAKE!



Ingredients:

24 oz cream cheese
2 tablespoons flour
1 cup sugar
3 eggs
1 teaspoon vanilla
¼ cup heavy cream
1 ½ cups sweetened cranberry puree

Crust:

2 ½ cups graham cracker crumbs
1 cup melted butter

Method:

1. Gather ingredients and bring to room temperature
2. Preheat oven to 325°F.
3. To make the crust place graham cracker crumbs in a medium sized work bowl. Add melted butter and mix well.
4. Press graham cracker mixture evenly over the bottom of a greased 10 inch spring form pan.
5. Place cream cheese, flour and sugar in the work bowl of electric mixer. Beat on medium/high until smooth. Add eggs one at a time, scraping sides of bowl between each egg. Add vanilla and heavy cream. Beat until smooth.
6. Pour 2/3 of the cheesecake batter over the graham cracker crust. Spoon the sweetened cranberry puree over the cream cheese mix in dollops about 1 inch apart. Pour remaining batter over puree. Swirl through the batter and puree with a knife to achieve marble effect (be careful not to scrape crust).
7. Create a water bath by placing the spring form pan in the center of a roasting pan. Pour hot water into the roasting pan approximately half way up the sides of the spring form pan.
8. Place roasting in the center of preheated oven. Bake for 45-60 minutes. Check cake at 45 minutes for doneness. Cheesecake will be golden brown and puffed in the center. If center is sagging add additional time as needed, and check every few minutes.
9. Let cheesecake stand for at least one and a half hours before refrigerating for 24 hours. Slide knife around rim of spring form pan, remove rim and serve.



BOG PETS

MEET MOLLY!

Meet Molly, the adorable puggle (pug/beagle) with a heart of gold and a nose for mischief. From the moment she wobbled into the office at the beginning of April, Molly has been a welcome addition. What Molly lacks in size, she more than makes up for in personality. With her squishy face and expressive eyes, she charms everyone she meets. At the ripe old age of 9, Molly may be a little slower and grayer around the muzzle, but her spirit remains as lively as ever. She is eager to lend her superior sniffing and napping skills to the office and to support Massachusetts cranberry growers one ankle lick at a time. Molly is a cancer survivor who is grateful to get some peace and quiet away from her twin brother, Otis, who does not know the meaning of personal space.





CALENDAR OF EVENTS

**UMASS CRANBERRY STATION
VIRTUAL PESTICIDE UPDATE MEETING
APRIL 24**

**CCCGA BOARD OF DIRECTORS MEETING
APRIL 25**

**CRANBERRY RESEARCH FOUNDATION
ANNUAL GOLF TOURNAMENT
SOUTHERS MARSH GOLF CLUB
JULY 15**

**CCCGA ANNUAL MEETING & TRADE SHOW
AD MAKEPEACE COMPANY
CARVER SIDE BOG - WAREHAM
AUGUST 21**

FOR SALE

WANTED

FOR LEASE

FOR SALE: 43' Berry trailer. Tractor driven 4" Pacific berry pump and 13000 watt tractor driven generator. Call Wayne: 508-941-4220

FOR SALE: 13- 100 Ft Lengths of Used Cranbarrier \$4.00 per foot Please contact Oiva Hannula & Sons at 508-866-1075

BOG FOR SALE OR LEASE: Interested purchasing or leasing bogs located in Bourne or Falmouth. Number of acres to be purchased/leased is negotiable depending on current condition and location. Please contact Dan Ward: dan@wardaquafarms.com

FOR SALE: Like new Alamo RM165 3pt Boom Mower in Raynham, MA for sale at a very reasonable price. Please call Kevin @ United for details...781-706-3430

WANTED: Pickup Trucks Needed. UMass Cranberry Station is looking for used pickup trucks (small and large) for purchase or donation. Please contact Rick at 413.230.1865 if you have something that might work for us.

HELP WANTED: Full time hourly worker wanted. Cranberry farm worker, equipment operator and various other responsibilities. Opportunities for growth. Good pay, health insurance, housing opportunity for ideal candidate. E-mail: thegreenecompany@aol.com for full job description.

HELP WANTED: Full time employment offered for work on cranberry bogs in Bourne and Falmouth, MA. Employment includes benefits. Contact Brian Handy at 508-958-4586.

WANTED TO RENT: Inside storage area. Call Wayne: 508-941-4220

WANTED: Furford picking machine call Ben at 508-237-9252 or Alan 774-313-6560

PLACE YOUR CLASSIFIED AD HERE!!

FREE TO OUR MEMBERS!

