

BOGSIDE



July 2022

135th ANNUAL MEETING & TRADE SHOW CAPE COD CRANBERRY GROWERS' ASSOCIATION

Wednesday, August 31, 2022 10 AM - 4 PM

Annual Business Meeting

**Cash Bar Lobster/Clam/Chicken Bake Trade Show
Equipment Swap/Trade/Sell Equipment Display
Baggo Tournament Live Music Ice Cream Truck**

NEW LOCATION!!!

**Oiva Hannula & Sons
8 Rochester Road, Carver**



**SAVE
THE
DATE!!**

CCCGA BOARD OF DIRECTORS

PRESIDENT
STEVE WARD

2ND VICE PRESIDENT
JOHN MASON

1ST VICE PRESIDENT
JEFF KAPPELL

SECRETARY/TREASURER
BRENDAN MOQUIN

DIRECTORS

MATT BEATON
SCOTT HANNULA
JIM HAYWARD
JON JAFFE
KEITH MANN

GLENN REID
ROB RUBINI
HILARY SANDLER
MIKE WAINIO

CCCGA OFFICE STAFF

BRIAN WICK
EXECUTIVE DIRECTOR
BWICK@CRANBERRIES.ORG

DAWN GATES-ALLEN
DIRECTOR OF MEMBER & FINANCIAL SERVICES
DGATESALLEN@CRANBERRIES.ORG

PATTI SILVIA
MEMBERSHIP & OFFICE COORDINATOR
PSILVIA@CRANBERRIES.ORG

BONNIE SOULE
SPECIAL PROJECTS COORDINATOR
BSOULE@CRANBERRIES.ORG

KIMBERLY MIOT
CRANBERRY TOUR & EVENT MANAGER
KMIOT@CRANBERRIES.ORG

MISSION STATEMENT:

TO ENHANCE THE MASSACHUSETTS CRANBERRY INDUSTRY THROUGH THE VIABILITY AND SUSTAINABILITY OF THE CCCGA MEMBERSHIP.”





77 Charlotte Furnace Road
West Wareham, MA 02576

Peter Beaton: peter@beatonscgs.com
Rob Rubini: Rob@beatonscgs.com

• Bog Management	• Sanding
• Bog Renovation	• Flume Repair/ Replacement
• Herbicide / Fertilizer Applications	• Irrigation Installation
• Custom Harvesting	• Weeding/Wiping
• Intergraded Pest Management	• Custom Fabrication
• Ditching/ Drainage	• Pruning

FLUMES FOR SALE

CONCRETE & ADS PIPE • INSTALLATION AVAILABLE

JOHNSON CRANBERRIES: 508-277-7035



THE BOGSIDE© NEWSLETTER IS A MEMBER ONLY SUBSCRIPTION
AND IS NOT TO BE REDISTRIBUTED WITHOUT PERMISSION.

CHANGING ON THE FLY

BY: BRIAN WICK, EXECUTIVE DIRECTOR



There are a few important announcements found elsewhere in the Bogside newsletter. Be sure to check them out as they involve rapidly closing due dates. These involve the bog renovation grant application, bog renovation tax credit applications, USDA/FSA ERP crop disaster payments, and USDA/NASS annual crop forecast survey.

As I'm sure you are all aware, southeastern Massachusetts is in a drought, with EEA Secretary Beth Card this week declaring southeastern Massachusetts in a significant drought (Level 2) and Nantucket in a mild drought (Level 1). Cape Cod is spared, considered to have normal conditions. I have also been reminded by the state's Department of Transportation, who oversee our railroads, for any growers with bogs, and particularly water bodies, that abut railroad tracks, to be particularly vigilant during a drought. According to MassDOT, when water is drawn down quickly, such as flooding for harvest, these are the conditions where soils can shift and cause embankment failures. CCCGA is helping to spread the word to any growers who may have bogs in these areas to be aware should this drought continue. We are working with the state to identify these bogs and to have a dialog with MassDOT, so we can help them better manage their infrastructure. We'll have more to report in subsequent weeks should the drought conditions worsen.

Plans are well underway for the 135th CCCGA Annual Meeting and Trade Show. If you have not signed up yet, please do so ASAP. We have longer than usual lead times this year for catering, t-shirt orders, etc. We are unveiling our new farm recognition program, honoring bogs that are 100 or more old. We are calling it the "Massachusetts Cranberries Centennial Bog Recognition Program." It's a means to recognize and celebrate the history and legacy of our longest-serving cranberry bogs. Any grower that meets the qualifications can submit their bog for recognition. The criteria are rather simple. The bog needs to have been consistently producing a crop for 100 years or more. That's it. Continuous farm ownership during those years is not a factor; we are celebrating the bog itself and its legacy. Any grower member of CCCGA that meets the qualifications can submit their bog for recognition. Each year, as bogs hit the milestone, we will recognize these long-standing agricultural gems. We recognize there will be quite a flood this first year and then we expect it will be a steadier pace after that. If you are interested in submitting your bog in time for recognition at the annual meeting, please be sure to turn in your information by **August 1 to the CCCGA office**. We are also creating a Google form, should anyone wish to submit online. The form will be ready for use by July 20 and we'll send an email out when it's ready and the url. Here is the information that we need for consideration: Bog Name, Year of First Crop, Location, Current Owners (name, address, email, phone), Bog Acreage. Optional Information is as follows: Vine Varieties, Listing of Previous Owners or Number of Previous Owners or Number of Generations Having Farmed it, Harvest Type (wet or dry). We hope this generates a fair amount of interest and will be another opportunity for us to showcase the history and persistence of our growers.

Let me close with a brief word on CCCGA's Government Affairs Director, John Fernandes, who is not writing an article this month. John is knee-deep in government relations activities that involve the state budget, the end of the legislative session, among other critical matters he is following. It's a frenetic pace right now, with the budget expected to be released any moment as I type this note. Because everything is literally in flux, it didn't make sense to write anything up as it's all subject to change and we certainly did not want to distract John from the important business at hand. John will be back next month with much to cover. Channeling John's closing words, stay tuned....

www.cranberryvine.com

Hybrid Vines for Sale

Some of the
highest yielding varieties in the USA

Crimson King, Granite Red, Pilgrim King, Midnight Varieties, BG, Valley King

- No royalties on initial planting.
- All new varieties with unique traits and high yields.
- Breeding hybrid vines since 1974.

Limited vines available. Reserve orders now!



**Valley
Corporation**

To order or arrange a summer variety tour,
Call Ed Grygleski at 608-387-9444 (Tomah WI)

Check our website for a list of varieties & yield data. Vines are field evaluated and selected for color uniformity, disease resistance and high yield. Valley Corp is a family owned and operated cranberry farm since 1890.



DECAS

*Family Farmed
Since 1934*

- Competitive returns
- Commitment to Massachusetts
- Agronomic programs

*For more information
please contact*

James Ross
Grower Relations & Agronomy Manager
(774) 435-0184
jross@decascranberry.com
decascranberry.com



Part of the Fruit dOr Group



**Move water, clay,
topsoil or sand.**

We have the
equipment
for the job!

- Case and Case IH machines
- Late model, low hour rentals
- Parts for all makes, all models
- Field service when and where you need us

CASE
CONSTRUCTION

MT MONROE TRACTOR
we keep you working

97 Turnpike Road, Westborough, MA 01581
508.845.4343 • 866.590.2273
www.monroetractor.com

LARCHMONT

IRRIGATION • DRAINAGE
PUMPS • LANDSCAPE LIGHTING

Lexington, MA Manchester, NH
781-862-2550 603-622-8825

SINCE 1949
SERVING THE GREEN INDUSTRY

- Irrigation Supplies
- Pump Stations & Supplies
- Drainage & More

Quality products from the leading manufacturers with unbeatable customer service and always the right price.

The exclusive Distributor of the original Cranberry Special

www.larchmont-eng.com



VISIT US AT
81 CHARLOTTE FURNACE RD.
WEST WAREHAM, MA

COMPETITIVELY SUPPLYING ALL OF YOUR GROWING NEEDS

Fertilizers & Chemicals • Irrigation Supplies
Pest Management • Safety Equipment • and more



WWW.PROGRESSIVEGROWER.COM
508-273-7358



Grower Contact: Jonathan Ashley
Senior Manager Grower Relations
jonathan.ashley@refresco.com

Maximize the fruit of your labour.

Our agronomists work closely with our grower partners to improve yields

We offer competitive pricing

Our cranberries are processed in a new state-of-the-art facility

Our grower partners obtain higher yields than the regional average

FRUIT D'OR IS CURRENTLY LOOKING TO
CONTRACT NEW ACRES.

Contact Simon Bonin our Director of Grower Relations and Agronomy:
819-291-0395 - sbonin@fruit-dor.ca

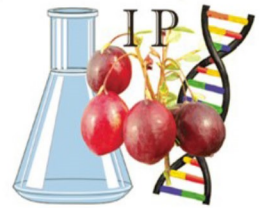
Fruit d'Or

Largest independant Cranberry processor. In business since 1999.

INTEGRITY PROPAGATION

The Cranberry Industry's First and Only Foundation Level Nursery

TAKING ORDERS FOR 2022 & 2023



The source for Rutgers University Certified Varieties:

CRIMSON QUEEN® DEMORANVILLE® MULLICA QUEEN®

SCARLET KNIGHT® the fresh fruit variety, **WELKER™** recommended for the west coast,

HAINES™ Tested in advanced replicated trials in OR, WA and WI, plots exhibit:

- Berries with uniform full color even in deep canopies
- Disease resistance superior to Stevens
- Less fruit rot than Stevens in replicated field plots
- Consistent high yields
- Mid season ripening
- Round berry with high firmness perfect for SDC

and Dr. Vorsa's latest release:

VASANNA™ In OR, WA, WI and BC tested in replicated field trials exhibits:

- Mid-season good color
- Especially high yields in BC peat and WI sandy soils



Vigorous plants with multiple branches

Providing 100% 'DNA Fingerprinted', 'Virus Tested' and 'Phytoplasm Tested' Plant Material

Contact us at 609-923-3143, or email contact@integritypropagation.com

www.integritypropagation.com

SOIL SOLUTIONS *for* HIGH PERFORMANCE LANDSCAPES



BOG MAINTENANCE
MATERIALS



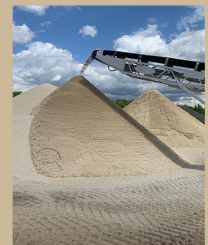
BOULDERS, STONE
AND ROCK SUPPLIES



BOG CONSTRUCTION AND
RENOVATION MATERIALS



STABILIZED STONEDUST®
FOR NATURAL ADA TRAILS



SCREENED AND
BANK SAND

CONSTRUCTION MATERIALS • BIORETENTION SOILS • TOPDRESSING SAND
ATHLETIC FIELDS • STABILIZED STONEDUST • PLANTING BED SOILS • GREEN ROOF MEDIA



Experience. Quality. Consistency.

CONTACT US FOR PRODUCT SPECIFICATIONS, TESTING
RESULTS, PROJECT ANALYSIS, AND PERSONALIZED QUOTES.

JUSTIN O'CONNOR

JUSTIN@READCUSTOMSOILS.COM

781.828.6300



READCUSTOMSOILS.COM

Guarantee a Flying Start to Next Season

Top Reasons to Use Bumblebees

- Bumblebees forage at temperatures as low as 40°F, honeybees forage when temperatures are 55°F and higher.
- Bumblebees do not adjust foraging times to avoid wind, a honeybees foraging is stopped when wind speeds reach 15 mph.
- Bumblebees can use “buzz pollination” or sonication to release pollen from flower anthers, honeybees do not sonicate to collect pollen.
- Bumblebees can deposit larger quantities of pollen to the stigma as compared to honeybees, requiring less visits for pollination.
- Bumblebees tend to have a more erratic flight pattern than honeybees which facilitates the movement of pollen across rows.
- Bumblebees will forage in lower light conditions than honeybees.



Koppert's Quad is especially designed for outdoor pollination with four hives inside; it is buzzing with bumblebees ready to pollinate.



800.928.8827 info@koppertonline.com

www.koppertus.com



KOPPERT
BIOLOGICAL SYSTEMS

BLOGS AND BLURBS

USDA/NASS Cranberry Survey Opens Soon

Pam Hird, the New England State Statistician for the USDA National Agricultural Statistics Service (NASS) is reminding all growers that the annual cranberry survey data collection period is July 29 through August 5. Growers should be on the lookout for this survey. It can be completed by mail, phone, or online at agcounts.usda.gov. Please reply during their timeframe. *(CCCGA editorial: The more growers that participate in the NASS survey with thoughtful crop estimates, the better likelihood that the USDA will have an accurate crop estimate. Many companies that buy cranberries from our industry handlers use the USDA crop forecast as a basis to determine the price they are willing to pay for fruit. Having an accurate forecast helps our handlers price fruit more appropriately in the marketplace.)*

Reminder: Bog Renovation Tax Credit Program is Accepting Applications

As previously mentioned, the Executive Office of Energy and Environmental Affairs is accepting applications for the cranberry bog renovation tax credit for 2020 and 2021. Applications are due August 10, 2022. There is no benefit in waiting, if you are eligible, turn in your application as soon as possible. If there are questions or additional information is required and you wait until close to the 10th to submit, you may have a very narrow window in which to be able to comply with their request. Avoid problems later by turning your application in as early as possible. There is a fillable form online or growers can print and fill out the form. Growers can apply via email or postal mail. More information can be found at <https://www.mass.gov/info-details/cranberry-bog-renovation-tax-credit-program#example-projects->

Reminder: Cranberry Bog Renovation Grant Program is Now Accepting Applications

The Massachusetts Department of Agricultural Resources is accepting applications for funding assistance for bog renovation projects. Applications are due Friday, July 22. Previous grant recipients are eligible to apply. Applications can be made online, in-person or by mail. For more information, visit <https://www.mass.gov/how-to/cranberry-bog-renovation-grant-program>

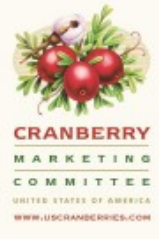
Reminder: USDA/FSA ERP (Emergency Relief Program) Closes July 22

The USDA Farm Service Agency (FSA) payment program for their Emergency Relief Program (ERP) closes on July 22. ERP Phase 1 will provide assistance to growers for losses to crops due to natural disasters. Cranberry growers who received crop insurance indemnity payments or had crop insurance in calendar years 2020 and/or 2021 are eligible for additional financial relief. Contact your local FSA office for details. We expect to hear about ERP Phase 2 shortly. This payment program will cover those growers that did not receive a federal crop insurance indemnity payment or did not have a federal crop insurance policy on their 2020 and/or 2021 cranberries and suffered losses. An important note from FSA is that it's best to call ahead and make an appointment with your local FSA Service Center, rather than just walking-in. This will allow FSA staff to have your individual information ready and will dramatically speed up the process.



UPDATES FROM THE CMC

BY: KAREN CAHILL



Annual Summer Meeting

The CMC's annual summer meeting will take place Tuesday, August 16 and Wednesday, August 17, 2022. This year we will be an in-person only meeting at the Seaview Hotel in Galloway, New Jersey. The Cranberry Institute will host its annual meeting the afternoon of Wednesday, August 17. The ACGA's 2022 Summer Meeting & Field Day will take place Thursday, August 18 at Rutgers. Visit www.uscranberries.com for more meeting information and to register.

The CMC is seeking two public members for a two-year term of office that begins after appointment by the USDA Secretary, likely in February 2023. Committee member positions are volunteer roles supporting the work of CMC providing mission-based leadership and strategic governance, similar to that of a Board of Directors. While day-to-day operations are led by CMC's Executive Director, the Committee-ED relationship is a partnership, and the appropriate involvement of Committee members is both critical and expected. Committee members are to utilize their individual skills, knowledge, and expertise to support the CMC. Committee members act as advocates and representatives of the organization.

Committee Member Responsibilities:

- Assist the CMC in ensuring that the organization does the best work possible in the service of its mission to promote the worldwide use and consumption of U.S. cranberries. Contribute to the Committee's long-term planning and participate in shaping the vision and work of the organization.
- Regularly attend and participate in the full Committee's biannual meetings (February & August). Contribute skills and expertise by serving on one or more subcommittees.

Qualifications:

- The Public Member represents consumer interests and therefore the candidate shall be ***neither*** a cranberry grower ***nor*** a handler and falls under the category of "non-industry members".
- ***Cannot*** represent an agricultural interest, nor have a financial interest in, or be associated with the production, processing, financing, or marketing of cranberries.
- Ability to devote sufficient time to familiarize themselves with the background and economies of the cranberry industry.
- Availability to participate in regular meetings and events onsite or virtually.
- Willingness to share skills and expertise in governance role; strategic thinker.
- Excellent communication skills and ability to work collaboratively and appreciate diverse perspectives.
- ***Individuals with a background in sales, marketing, economics; health research; or health, wellness and nutrition are especially invited to apply for Committee membership.***

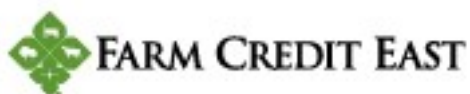
Individuals with an interest in serving as the CMC's Public Member must submit a letter and resume outlining their qualifications to Danny Raulerson, Executive Director, Cranberry Marketing Committee, by email at draulerson@uscranberries.com. ***The deadline for submission is 5:00 p.m. Monday, August 1, 2022.***

Continued from previous page

Upcoming International Activity:

August

- Advertising and Consumer PR (India)
- China International Tree Nuts Conference (China)
- Cranberry Video and Promotion with Cat's Kitchen (China)
- August - September Digital Promotions (India)
- August – November Cranberry Promotion with Qushengyuan Bakery Chain (China)



Farm Credit East is deeply rooted in our customers' success – and Northeast agriculture. In fact, no one knows ag quite as well as Farm Credit East. So if you're looking for financing or business services for your agricultural operation – of any size or type – look to Farm Credit East. Our mission is to grow your success.

FARM.CREDITEAST.COM
508.946.4455

Loans and Leases
Tax Services
Payroll Services
Business Consulting
Record-keeping
Country Home Loans
FarmStart for New Businesses
Real Estate and Equipment Appraisals



Mariani
PREMIUM CRANBERRIES

Andy Reitz
areitz@mariani.com
Director of Grower Relations
P 715.423.5200 C 715.459.3535



Considering a change?
Exploring options?

Give us a call first
for more information
about our program.

OUT AND ABOUT

BY: DAWN GATES ALLEN



It's the middle of July, our industry is for the most part completely pollinated, and we have some heritage varieties still in bloom but showing signs of bloom peaking out, it's been hot and no doubt the best weather for pollination this year, a stark difference from the 9-12 inches of rain during July of 2021. As we all hope in the weeks to come, we want perfect growing weather and rain events from now until harvest season, let's hope the fertilizer set and the remainder of the growing season aligns for us. Speaking with several growers of late, I am hearing that all varieties are promising for a decent crop. Our industry is certainly hoping for the return of stable crops.

Bogs Online, my favorite project as many growers know, again is in the process of a major overhaul this year, I have had several grower calls, zoom sessions and received incredible feedback from growers regarding what data to capture. Ease of data entry and report generation has been duly noted, again the goal is to weave certain costs to grow into a cost-effective crop analysis report on items spent vs the total production of each section. More to come on this since it's a two year grant, again grower feedback has been the value, strength and success of BOL. A new important NPDES is noted below for our growers with 80 acres or more and perhaps a reason to consider using BOL for growers over 80 acres. We have enhanced the functionality in BOL to generate a NPDES report that will show sections in NPDES very similar to the Zone II reports which shows section also noted as a Zone II.

Below is the recent updates to BOGS Online that will allow growers to more accurately manage and report on their NPDES acreage:

A NPDES indicator has been added to the *Bog Information screen*, giving growers control over whether a bog section is marked as NPDES. This allows BOL Users who assist with bog management and who might be applying pesticides, but *don't actually make the decision to spray* or with what materials will be used.

- Note: You must take action to mark your NPDES sections as such in order for the acreage to be included on the NPDES report to be filed with the state. This works the same as marking your bog sections as a Zone II – you only need to take this action once.
- The NPDES report will pull all pesticide applications for a grower and bog/section where the bog/section is identified as NPDES and the application was made by a non-hired applicator.
- A warning message now displays on the pesticide application screen, reminding growers to populate the NPDES fields on the application record any time a NPDES bog/section is treated.
- A new NPDES Acreage Report has been built to allow growers to view all of their NPDES bog sections at one glance – similar to the Bogs in Zone II Report – providing growers with a way to check that all of their NPDES acreage has been marked appropriately within the Bog Information screen of their BOGS account.

Bogs Online BOL training sessions will be held for new users, and I welcome current users to participate in the training session as well. **Friday, August 5th at the CCCGA office 8:30** in the morning, we will review updates on the new functionality of Sand, Pruning, NPDES for growers that attend. I would appreciate more feedback regarding the production costs for the cost calculator features being developed, for example what cost are important to aid in decision making? Email datesallen@cranberries.org or call 508-726-6052. Anyone new looking to use Bogs Online for this year for pesticide reporting, please contact me **ASAP**, so that I can schedule one on one's with you for the initial setup. Remember pesticide reports are due August 31, 2022. (Remember that CCCGA Annual Meeting is August 31st)

Continued from previous page

DOT Reminders harvest season is roughly 75 days out, to update your biannual DOT click on this link to the FMCSA website where you can renew/update your DOT number. [Registration | FMCSA \(dot.gov\)](https://www.fmcsa.dot.gov/Registration)

Your DOT registration number determines which year and month when you need to renew. The NEXT TO LAST digit of your DOT number determines the year which your license expires. If the next to last number is Odd, you renew in odd calendar years. An even number renews in even years. The LAST number of your DOT is the month in which you need to renew as follows:

USDOT Number ending in:	Must File by last day of:
1	January
2	February
3	March
4	April
5	May
6	June
7	July
8	August
9	September
0	October

FMCSA does not call you, don't be fooled by robo-callers looking to take your money. ***Report aggressive or misleading telemarketers at:*** <https://reportfraud.ftc.gov/#/>

Keeping your USDOT Number Active is easy and free! If your USDOT Number is Active and you need to make updates, you can do so on-line. If your USDOT Number is already Inactive, you won't have on-line access to make updates, so just send us an updated Motor Carrier Identification Report (Form MCS-150) via e-mail or fax for quickest processing.

Verify the USDOT number status on the [SAFER Company Snapshot web page](https://safer.fmcsa.dot.gov/). Visit our FAQs on <https://ask.fmcsa.dot.gov/> for additional information.

Continued on next page:

BILL'S TRACTOR REPAIR

Servicing
Diesel and Gasoline
Engines
On Sight Repairs

Bill Alger
317 Elm Street
Kingston, MA 02364
Cell: 617-688-6961



*"Serving Northeast Agriculture
Since 1984"*

Arthur Carroll Insurance Agency

Family Owned and Operated
Offices in Farmington, ME and Thomaston, CT

www.arthurcarrollcrop.com

ME: Office: 855-305-2010

CT Office: 860-283- 6540

Continued from previous page

Reminder register for the 135th CCCGA Annual Summer Meeting ASAP

We are thankful to our Host Sponsor this year Oiva Hannula & Son's Inc. in Carver, who are taking on this huge welcome back to the bog event for our membership. If you haven't already registered, click below on the proper pdf membership registration, fill the form out completely to include sponsorships, t-shirt size and meal selection (choice of lobster or chicken). *Any growers that have used equipment/parts/tools/etc. you are looking to sell, trade or swap please contact Dawn at CCCGA 508-726-6052 to make arrangements for space. You're welcome to bring a truck and trailer to display from as well.*



Sustaining Member
Registration Annual



Grower
Registration Annual

OCEAN SPRAY, A GROWER-OWNED COOPERATIVE

CONTACT US AT
GROWERRELATIONS@OCEANSPRAY.COM OR CALL
1-800-334-4204





At MTE, service is our priority.

Call or visit us online today!

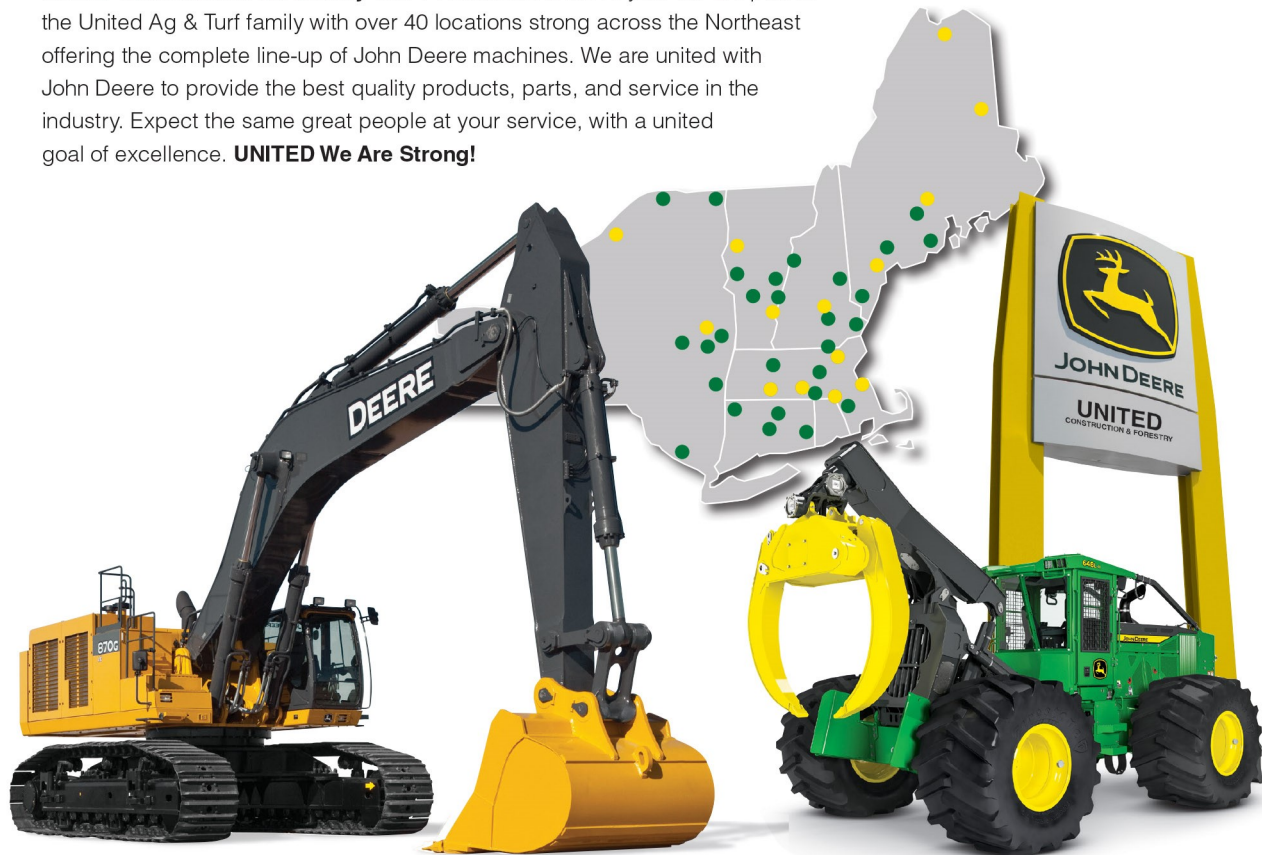
1-888-708-5296

www.mteequipsolutions.com

sales@mte.us.com

WE ARE UNITED

We are proud to announce that Nortrax and Schmidt Equipment are now **United Construction & Forestry** with 14 locations to serve you. We are part of the United Ag & Turf family with over 40 locations strong across the Northeast offering the complete line-up of John Deere machines. We are united with John Deere to provide the best quality products, parts, and service in the industry. Expect the same great people at your service, with a united goal of excellence. **UNITED We Are Strong!**



UNITED

Construction & Forestry

MAINE

Heron 866-416-3764
Houlton 866-416-3765
Ft. Kent 207-834-6701
Westbrook 866-416-3763

MASSACHUSETTS

North Oxford 800-922-8295
BillERICA 800-531-2266
Plymouth 800-916-0997
Springfield 800-734-5594
Swansea 800-456-6885

NEW HAMPSHIRE

Pembroke 800-852-3338

NEW YORK

Clifton Park 800-333-0620
Gouverneur 315-287-0703

VERMONT

Springfield 800-639-3071
Williston 800-422-4955

www.UnitedCF.com



UMASS CRANBERRY STATION NEWS

BY: HILARY SANDLER



Work is on-going at the Cranberry Station. We hope that the Lab Building will be inspected and ready for occupancy in August; we will let you know as soon as we know! The schedule currently shows the new building should be ready for occupancy by November 1. The Admin staff (Robyn Hardy, Dawna Gauvin and myself) will move into the new building as soon as we can. Plans are to re-purpose the current Admin Building to provide office space for UMass employees and our Post Docs; we plan to have the current Director's Office become our library with space available for small meetings.

We are in the market for PICKUP TRUCKS. If you have an older but working vehicle that you are thinking of moving off your business, please contact me (413.800.6531 or hsandler@umass.edu). We can purchase vehicles or would be willing to accept donated vehicles.

The IPM Message will be posted regularly for a few more weeks. You can listen to an audio recording by calling 508-258-9191 or visit our website <https://ag.umass.edu/cranberry/ipm-message> to read it and view photos. Messages are updated by Friday each week.

We will be hosting a Zoom Bogside Workshop on Tuesday August 9 from 9-10 am. 1 contact hour will be offered. Please contact Robyn Hardy at rmhardy@umass.edu or 413-800-7274.



IT MAY BE COMPACT,
BUT ITS REACH IS WORLDWIDE.





Step into a Kubota excavator and it's easy to see why it earned the title of #1 selling compact excavator in the world*. Six heating and cooling vents and an easy-open front window provide the kind of comfort that keeps operators in the cab and getting the work done. Minimum tail swing, industry-leading bucket breakout force and an optional quick coupler are just some of the additional features that give the Kubota compact excavator such a huge reputation.

SALES • SERVICE • PARTS • RENTALS



Your #1 source for Kubota products since 1979.

**45 North Main Street, Carver, MA
508-384-0011 • www.norfolkpower.com**

   KubotaUSA.com

*According to 2016 OEM Off-Highway Research, Kubota has the largest compact excavator market share in the world. ©Kubota Tractor Corporation, 2019.



TOURS AND EVENTS

BY: KIM MIOT



Our coach tours have been going well and guests have been giving us great feedback on the tours. They enjoy learning about how cranberries grow, their history and about farming cranberries. I like to ask where people are from and here are some of the places that people have visited from this year: Texas, California, Virginia, Maryland, Washington DC , North Carolina, Arkansas, Alabama and Canada!

Public Tour update. I am spending the summer scouting bogs that are open to having public bus tours this harvest season. I am gathering information such as bog names, bog owners/managers, locations, and best bus access. Please let me know if you are open to public tours and I look forward to adding your information to the database. We hope to have a full list so tour guides can easily get to a harvest area.

Continued on next page:

Web-Based Irrigation Management



HORTAU
SIMPLIFIED IRRIGATION®

- Manage Crop Stress in Real Time
- Frost Protection and Mobile Alerts
- Remote Start and Automation
- Reduce Energy and Water Use
- Full Service and Support



For more information call **(920) 246-9130** or visit hortau.com

TOURS AND EVENTS CONTINUED:

BY: KIM MIOT

Assistant Tour Guide job openings Southeast MA cranberry bog tour guides needed

The Cape Cod Cranberry Growers' Association is seeking enthusiastic Assistant Tour Guides to help with 90-minute bus tour groups at cranberry bogs in southeastern Massachusetts. This part-time, seasonal position is ideal for self-motivated candidates looking for a fun way to make extra income.

Job Title: Bog Tours Assistant

Hours Per Week: Part-time, Seasonal, Flexible schedule

Base Pay Rate: \$18 per hour

About the position:

Assistant Tour Guides will support the lead Tour Guide on cranberry bog tours both on the tour bus and at the bog. Duties will include, but are not limited to, the following: check in guests, direct bus driver to bog location, research best route to bog prior to tour date, put out safety signage at bog location, interact with tour guests, assist with on-site guest management. Some office work may be included such as prepping for tours.

Skills and Experience Required:

- Ability to work in an office setting, on a tour bus as well as outside at a working cranberry bog, sometimes under adverse weather conditions
- Organized, attention to detail and a strong ability to multitask and meet deadlines
- Flexibility and adaptability to accept varying tasks and responsibilities
- Ability to work both independently and as part of a cooperative team
- Dependability and accountability are absolutely a must!
- Ability to interact professionally and courteously with bog tour guests and growers with diverse backgrounds and personalities
- Outgoing personality that is comfortable interacting with the general public
- A commitment and supporter of cranberry agriculture
- Must have valid driver's license and own automobile
- Must be able to lift objects up to approximately 40 pounds
- Tours operate seasonally September and October, however, as the program expands, tours will be operational May - November.
- Some weekends may be required
- Training will be provided

Schedule openings/needs:

Weekdays Monday to Friday September-October

Weekends during harvest -October

Tours run primarily between 9am-4pm with most scheduled in the morning or early afternoon

There are usually 1-3 tours per day

Continued from previous page

Work Location: Will vary depending on bog location for tours but generally tours will originate in Wareham, Middleboro or Plymouth.

This Job Is Ideal for Someone Who Is:

Reliable

Enjoys interacting with people

Thinks quick on their feet

Strong advocate for cranberry agriculture

Application Instructions:

Please send a brief letter of introduction and resume to bogtours@cranberries.org

The Cape Cod Cranberry Growers' Association is an Equal Opportunity Employer.

Continued on next page:

Landers Farm, LLC.

A Division of P. A. Landers, Inc.

PREMIUM BOG SAND

HANOVER • PLYMOUTH • FORESTDALE



Meeting the Needs of Growers Every Season of the Year.

508-660-6404 • 781-826-8818 • Monday - Friday 7am - 5pm • Saturday 7am - 12pm

BOG CONSTRUCTION • MATERIAL DELIVERY • EQUIPMENT RENTAL

We need bog tour guides!

Spread your knowledge, get paid and help support our industry.

The Cape Cod Cranberry Growers' Association is seeking enthusiastic tour guides to lead 90-minute bus tour groups at cranberry bogs in our area. This part-time, seasonal position is ideal for self-motivated candidates looking for a fun way to make extra income. We are looking for people who can talk about the cranberry industry, its history, health benefits, and growing seasons. Family grower storytelling is a plus if you are a grower or a previous grower, but this is not required. This is a great position for grower family members, college students or cranberry workers who want to make extra money.

Job Details & Requirements:

- Compensation is \$50 per tour.
- Tours last approximately 90 minutes and have anywhere from 15 to 50 guests. Guides must have the ability to walk/stand for the tour duration on a bus and at the side of the bog, on uneven ground. Guides will need to be able to talk, ride and stand backwards on the bus for an extended period.
- Guides are expected to arrive 20-minutes before the allotted start-time of the tour.
- Qualified candidates must be skilled in both customer service and public speaking, have a positive attitude, be team-oriented, have a flexible approach and are committed to supporting the Massachusetts cranberry industry.
- Successful candidates must have the ability to lead groups outdoors, sometimes under adverse weather conditions.
- Dependability and accountability are absolutely a must!
- Tours operate seasonally September and October, however, as the program expands, tours will be operational May - November.
- Tours are conducted on weekdays and several weekends in October during harvest.
- For scheduling, guides must be able to provide their availability to work at least 2 to 3 weeks in advance, more is preferred.
- Training is required and will be provided. Guides will start shadowing a seasoned tour guide and, when ready, will operate tours on their own. Most tours will have an associate to assist with driving directions, timing, monitoring guests and other logistics.

Job Type: Part-time, Seasonal, Flexible schedule

Pay: \$50.00 per tour

Schedule openings/needs:

- Weekdays Monday to Friday September-October
- Weekends during harvest October
- Tours run primarily between 9am-4pm with most scheduled in the morning
- There are usually 1-3 tours per day

Continued from previous page

Work Location: Will vary depending on bog location for tours but generally tours will originate in Wareham, Middleboro or Plymouth.

This Job Is Ideal for Someone Who Is:

- Reliable
- Enjoys interacting with people
- Thinks quick on their feet
- Strong advocate for cranberry agriculture

Serious candidates should email bogtours@cranberries.org with their resume and cover letter stating why they would be a good fit for this role. Please state any experience with leading groups of people or public speaking.



IAS
WWW.IASSYS.COM
Grow Smarter, Grow Better

Find out what so many growers already know

- The “Gold Standard” for automation and monitoring
- American Made
- The 1st choice for cranberry growers everywhere
- Reduce overhead, energy costs and water usage
- Easy to use
- Introducing the ISM100 Soil Moisture Meter

Call us at 800-549-4551 or email: info@iassys.com to learn about our quantity discounts!



Nutrien
Ag Solutions™
For All Your Chemicals, Fertilizer & Nutritional Needs.

Partnering with Growers to Feed the World.

Set Fertilizer Applications should be wrapping up soon. Finish up W/Fungicide Apps. Continue to be vigilant with Insect Management.

Mike Utley
Branch Manager
(508) 866-4429
96 Forest St
Carver, MA 02330

Jeff Utley
Operations Manager



75+ YEARS OF KNOWLEDGE & EXPERIENCE
handling cranberries from bogs, to bins, to baskets...

CHIP MATHEWS
Director of Purchasing
P: (856) 455-1000, 7295
C: (401) 361-1310
chipmathews@lassonde.com

KATHLEEN PATTERSON
Plant Manager
P: (508) 866-4788, 10
kathleen.patterson@lassonde.com

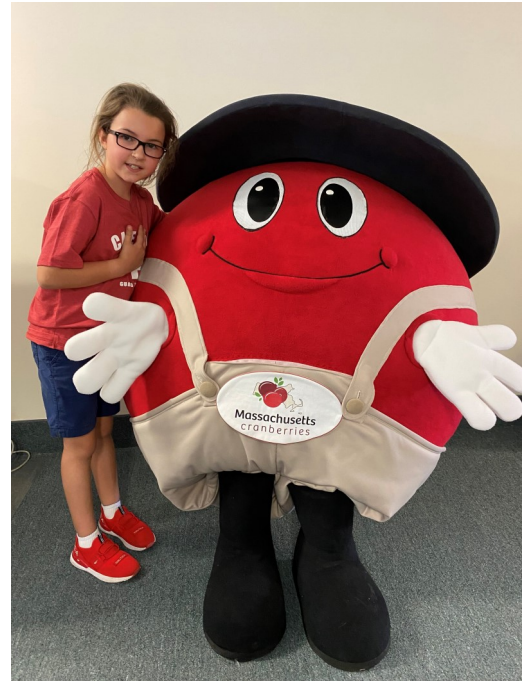
QUALITY PRODUCTS GROWN BY INNOVATIVE THINKERS

VISITORS OF THE MONTH

JULY

We were lucky to get another visit from Ron Drollett this month. This time, he had his cute little granddaughter along. Sarah Gagnon was happily doing errands with her granddad.

Why not stop in the office for a visit soon and be our next visitor of the month!!!!



NOR'EAST HYDROSEEDING INC



Custom Screening Available On Site
Contact Marc Wilson at (508) 889-9725 or

CHECKING FOR ZONE II's

Even though spray season is winding down, it's never too late to check to see if your bogs are in a Zone II (Groundwater Protection Areas, that we generally refer to as Zone II). The state has created a new mapping tool that is easy to use, called MassMapper. So if you haven't checked your bogs recently to see if they might be in a jurisdictional area, please read on. We'll be repeating this information again in the spring as well.

Visit the MassGIS Mass Mapper (Created by the Office of Geographic Information (MassGIS) as a modern replacement for the long-used Oliver.) to view Zone II's and IWPA Wellhead Protection Areas to identify which of your bog sections are in a protected area: Because Zone II areas can change yearly, it's always a good practice for growers to check to see if any of their bogs have been placed in a Zone II or perhaps fallen out of one. CCCGA has created a custom map within the state's Mass Mapper viewer for your reference.

Click here to view the MassGIS Mass Mapper where you can zoom in to see if your bog is in a Zone II.

This is the state's most up to date map describing Groundwater Recharge Areas, otherwise known as Zone II, using the state's mapping tool, MassMapper. This includes both Zone II (cross-hatched polygons, outlined in pink) and IWPA's (Interim Wellhead Protection Areas, outlined in pink circles). Town boundaries and major map features are for reference points. Users can zoom in/out or move around the map using the mouse. Please note, only the largest sized IWPA's are jurisdictional for agriculture, all of the others are not. To understand which IWPA is the largest, the IWPA over the eastern edge of the Cape Cod Canal is the largest size. If you have any questions, please contact CCCGA.

Remember, we are using the term Zone II to describe both Zone II's (polygons) and IWPA's (circles). All Zone II's are jurisdictional but only the largest IWPA's are. It is strongly recommended that if you are unsure on the status of an IWPA that you contact CCCGA for clarification.

For further information, please refer to:

[CCCGA's Grower Advisory on Zone II's](#) (Note: You must be logged in to your CCCGA grower account to view the advisories.)

[Cranberry Chart Book on Zone II's](#)

[MassGIS Mass Mapper Quick Start Guide](#)

[Here](#) is the link to the Zone II Mapping feature Brian created.



FARM CREDIT EAST SEEKS MODERN AGRICULTURE PHOTOS FOR A CHANCE TO WIN \$100

Farm Credit East is currently seeking creative images of modern Northeast agriculture, commercial fishing and forest products to fill the pages of its 2023 *Agricultural Views* calendar. Upload your picturesque images from the farm, woods or dock at [FarmCreditEast.com/Calendar](https://www.farmcrediteast.com/Calendar) by July 31 for a chance to win \$100.

Winning photographs will be featured in Farm Credit East's 2023 calendar. From all entries, 14 photos will be selected for a \$100 prize each. Additional photos will be selected to fill the calendar pages, each earning a \$25 prize.

"For nearly two decades, we've received many photo submissions illustrating progressive agriculture operations," says Kristie Matuszewski, Farm Credit East director of marketing and communications. "We look for fresh imagery that represents Northeast farming, horticulture, forestry and commercial fishing during every season, as well as shots that celebrate rural life in New England, New York or New Jersey."

Winning photos are selected based on technical quality, clarity and composition, as well as photos that capture unique views of modern agriculture and life in the country. So take your camera out to the field, barn or dock, in the tractor cab, out on the open water, or into the woods, and send in the many views of agriculture enriching Northeast rural communities.

"Last year, we received more than 900 images from dozens of talented photographers. We look forward to reviewing this year's entries," said Matuszewski.

Only digital photos are accepted. Contest rules and an entry form, as well as inspiration from previous years' calendars, can be found at [FarmCreditEast.com/Calendar](https://www.farmcrediteast.com/Calendar). **The submission deadline is July 31, 2022.**

<https://www.farmcrediteast.com/News/media-center/press-releases/20220629CalendarPhotoContest>

Farm Credit East is a member owned cooperative with 25 locations in its eight-state service area. In addition to loans and leases, the organization also offers a full range of specialized financial services, such as tax preparation, payroll, record keeping, appraisal and consulting for farming, forest products and commercial fishing businesses. Farm Credit East is governed by a 19-person board of directors, comprised of 15 customer-elected, two customer appointed and two outside appointed directors. For more information, visit [FarmCreditEast.com](https://www.farmcrediteast.com).



Bees are our Business!

**MERRIMACK VALLEY
APIARIES, INC.**

**3 Generations of Pollination Service to the
Cape Cod Cranberry Growers**

**Based in Massachusetts, we are ready to
meet your pollination needs.**

Contact Glenn Card	Mobile 978-337-3972
Office 978-667-2337	Email glenncard@mvabees.com



CALENDAR OF EVENTS

**CCCGA Board of Directors Meetings
Thursday, July 28th, September 8th, & December 15th
8AM @ CCCGA Office, Plymouth**

**Plymouth Waterfront Festival
Saturday, August 27th
Plymouth**

**CCCGA Annual Meeting
Wednesday, August 31st
Oiva Hannula & Sons, Inc., Carver**

**Massachusetts Day at the Big E
Thursday, September 22nd
West Springfield**

**Cranfest '22
Friday, November 11th & Saturday, November 12th
Plimoth Patuxet Museums, Plymouth**

**America's Hometown Parade
Saturday, November 19th
Plymouth**

FOR SALE

WANTED

FOR LEASE

FOR SALE: Kubota - B 21 diesel, four wheel drive, with front bucket, backhoe attachment, forks, and post hole auger. Has PVC cover with zip up windows. Used to load sand, clean up, and snow removal! Excellent condition and well maintained. \$18,500

Kubota - RTV 900 Utility vehicle. Diesel, 4 wheel drive, hydraulic dump bed. Original owner. Used for transportation of cranberries orr of bogs. Excellent condition, well maintained. Side by side seat. Hydrostatic transmission. \$8,500

Logical S-4, stainless steel computerized bagging machines with custom made OESCO Stainless steel conveyors. Two sets. Used to bag cranberries for retail sale. Can be set up for coffee beans or most anything. These are food grade and can be seen on "You Tube".

\$4500- 2012 set

\$5500- 2021 set

400-450 Ropak yellow plastic grape lugs. Ventilated and interlocking for storage. Holds 25 lbs fruit and weighs 3 lbs. empty. Labeled P. J. Cranberries East Sandwich

Per hundred- \$5.00 each. Less than a hundred - \$7.00 per

Furford picker, 4 hp Honda \$4500.

Furford picker, (knock off) 4 hp Honda new. \$3750.

John Deere Power tech 2.4 l diesel engine with Cornell pressure pump capable of 11 acres with primer, suction line. Excellent condition. 1100 hrs. \$16,000

Northern Tool steam cleaner with oil burner and Briggs and Stratton gas engine.

New \$2630 - \$900.

2 Polyjohn encore portable hand washing stations and sinks. \$300 each

2 Hayden Improved cranberry separators from the 1930's both in excellent condition, one is almost " new old stock". 2 Hayden wooden conveyors (2010 and 2012) custon built. A Hayden blower and a Bailey blower. Sorting tables both hayden and several others.

Would like to sell as sets, make offer!

Call Pete at 508-367-9951

FOR SALE: York Rake, 8 feet long, "Scarafar", 2 front tires, good condition. Call 508-746-0916.

FOR SALE: 13.38 acres of Ben Lears & Early Blacks. The property consists of a 10 acre reservoir & 45 acres of upland a section of upland has 3 possible house lots with right-a-ways. Two irrigation pumps & a lift pump to retrieve water for reservoir. A 54X16X60 insulated & heated Morton Building. Property located in Carver. Call 508-866-4916.

FOR SALE: Beautiful, secluded 100 acre property in Carver, MA. 35 acres of ocean spray dry picked cranberries, 4 acres of Christmas trees, cranberry museum and gift shop that caters to Argo tourists. Please call 339-933-0207 for more information or to make an offer!

BOG FOR LEASE: Ocean Spray Cranberry A-pool bog for lease, will negotiate 8 acres. 4.5 acres of Early Black, 2 irrigation pumps, 1 lift pump 4 1/2 acres of pop-up, 3 1/2 acres of traditional sprinklers Spring fed reservoir. Bog located in West Wareham. Please call 508-748-1137

FOR SALE: Three "vintage" Wisconsin engines. York Rake, 8' 4", good condition, with a grading blade (Scarafer"), York Rake RW Serial #2323 Eight (8) foot water reel, side arm picker, reel in front. "Vintage" cranberry boxes, excellent condition, stored inside, \$15.00 each. Call 508-746-0916 for more information.

FOR SALE: Pruning head for St. Jacques Machine X4 sander with heated body 4X4 wheeler off Hydraulic sander Contact Scott 508.942.4511

Continued on next page:

FOR SALE

WANTED

FOR LEASE

FOR SALE: 305 Chevy with Berkeley Pump , propane , 10 ac \$5500. - Kubota 3650 dual wheel tractor external hydraulic, 3 pt \$10000. - Used aluminum flumes 36,24,15 inch good shape , \$BO - 3pt hitch drainage tile puller like new , \$ 4200. - 8&10 inch PVC mainline pipe - Berkeley 12 in flow pump B10GRMBM , \$2500.
Call 508-866-1149 or 508-269-3693

FOR SALE: Cranberry Water Harvester, in excellent condition, can be seen locally, asking \$3,800 or B. O. Call 508-802-1067 and ask for Doug.

FOR SALE: One Kubota four cylinder motor with clutch and Berkley pump. Runs fine. \$5000. Two four wheel drive bog sanders with Wisconsin motors and International drive trains - \$4000. or best offer. Over 100 Rainbird #30 H sprinklers or risers 12" -14" \$10. each. Four Wisconsin motors for use or parts - make an offer. Please call John at 508-509-3584 with any questions.

FOR SALE: New-Unused Furford Cranberry Picker and Pruner Selling at Cost Harvester - \$13,900. Shipping From Washington state - \$685. 20 Burlap bags - \$77. Expenses - \$38. Total Cost \$14,700. Call John 207-985-1288

FOR SALE: Home and bogs. 3500 sq ft home with garage. Two barns of approx 3,000 sq ft. 12.5 acres of bog, mostly hybrids. Over 18 acres total. Two pumps with automation. Located in South Middleborough.
Call 508-333-0355

HELP WANTED: Lassonde Pappas Carver, MA We are currently looking for seasonal full-time help in our cranberry plant: Office Help, Forklift Operator, Lab Help and General Laborer. If interested please call: 508-866-4788

WANTED: Diesel Ford or Massey Ferguson tractor 30-40 hp. Contact: call or text Ben at 508-237-9252 or Alan 774-313-6560.

WANTED: Up to 100 feet of used Cranbarrier boom to coral pond weeds, I am a local Carver resident from Beaver Dam Road.
Contact: Bonnie at 508-333-6708

WANTED: John Deere 6x4 power dump.
Please call 508-295-2319

WANTED: looking for a 6 wheeler dump truck or a trash box for a 6 wheeler dump call Call Alan at 774-313-6560
or Ben at 508-237-9252

WANTED: Dry cranberry harvester. New or used in any condition. Also plans to build a working harvester. Contact: Wojciech Zuber at zuber.wojciech@gmail.com or 1-403-894-0865

WANTED: Cranberry picking machine or plans /project to build new one. Machines need to be "Furford" type, can be complete or without engine. contact only via email adamtomczuk4@gmail.com

WANTED: Pruner Walk-behind or ride-on pruner. Attached rake or similar a plus. Please contact Rick Leibe at UMass Cranberry Station. 413-230-1865.

**PLACE YOUR
CLASSIFIED AD
HERE!!**