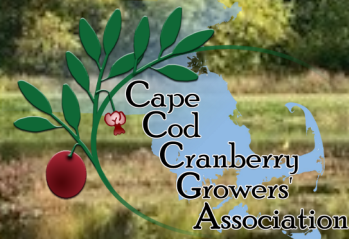


# BOGSIDE



*The Official Newsletter of the Cape Cod Cranberry Growers' Association ©*

*August 2022*

## CRF ANNUAL GOLF TOURNAMENT

### Golf Tournament Yields Valuable Dollars for Cranberry Research

As most are aware, the Cranberry Research Foundation (CRF) hosts the Annual Golf Tournament, held at the Southers marsh Golf Club in Plymouth each July. Through sponsorships, players, raffle and silent auction items, these are the dollars that are dedicated to funding valuable horticultural research for our cranberry growers in Massachusetts. This year, the tournament will net roughly \$16,000, which will be put in its entirety towards cranberry research projects in 2023. These projects will include continued research at the UMass Cranberry Station and potentially other horticultural research, such as in the past couple of years, worthwhile projects from Rutgers University have been funded. All of this research better enhances our growing practices in Massachusetts.

A big thank you goes out to all who came to support the day! CCCGA staff pitched in to help organize and run the tournament. Dawn Allen, Kim Miot, Patti Silvia, Bonnie Soule, and Dalton Wick all deserve a big round of applause for joining in to make the event a success. Jayme Carr, a recent Silver Lake graduate and incoming freshman at the University of New Hampshire volunteered her time to help out as well. A special thank you goes out to Marjie Beaton-Kane of Cranberry Growers Service for helping with the hole-in-one spotting! There were a couple of close shots on the green at the hole-in-one contest but no GMC truck winners again this year!

*Continued on page 9:*



**ABOVE: ELAINE HANNULA & DEB SULLIVAN  
BELOW: WILL STEARNS SENDS THEM OUT!**

## CCCGA BOARD OF DIRECTORS

### PRESIDENT

STEVE WARD

### 2ND VICE PRESIDENT

JOHN MASON

### 1ST VICE PRESIDENT

JEFF KAPPELL

### SECRETARY/TREASURER

BRENDAN MOQUIN

## DIRECTORS

MATT BEATON

SCOTT HANNULA

JIM HAYWARD

JON JAFFE

KEITH MANN

GLENN REID

ROB RUBINI

HILARY SANDLER

MIKE WAINIO

## CCCGA OFFICE STAFF

BRIAN WICK

EXECUTIVE DIRECTOR

BWICK@CRANBERRIES.ORG

DAWN GATES-ALLEN

DIRECTOR OF MEMBER & FINANCIAL SERVICES

DGATESALLEN@CRANBERRIES.ORG

PATTI SILVIA

MEMBERSHIP & OFFICE COORDINATOR

PSILVIA@CRANBERRIES.ORG

BONNIE SOULE

SPECIAL PROJECTS COORDINATOR

BSOULE@CRANBERRIES.ORG

KIMBERLY MIOT

CRANBERRY TOUR & EVENT MANAGER

KMIOT@CRANBERRIES.ORG



## MISSION STATEMENT:

TO ENHANCE THE MASSACHUSETTS CRANBERRY INDUSTRY THROUGH THE VIABILITY AND SUSTAINABILITY OF THE CCCGA MEMBERSHIP.”

[www.cranberryvine.com](http://www.cranberryvine.com)

### Hybrid Vines for Sale

Some of the  
highest yielding varieties in the USA  
*Crimson King, Granite Red, Pilgrim King, Midnight Varieties, BG, Valley King*

- No royalties on initial planting.
- All new varieties with unique traits and high yields.
- Breeding hybrid vines since 1974.

***Limited vines available. Reserve orders now!***

 **Valley Corporation** To order or arrange a summer variety tour,  
Call Ed Grygleski at 608-387-9444 (Tomah WI)

Check our website for a list of varieties & yield data. Vines are field evaluated and selected for color uniformity, disease resistance and high yield. Valley Corp is a family owned and operated cranberry farm since 1890.

**Mariani**  
PREMIUM CRANBERRIES

Andy Reitz  
areitz@mariani.com  
Director of Grower Relations  
P 715.423.5200 C 715.459.3535



Considering a change?  
Exploring options?  
Give us a call first  
for more information  
about our program.

THE BOGSIDE© NEWSLETTER IS A MEMBER ONLY SUBSCRIPTION  
AND IS NOT TO BE REDISTRIBUTED WITHOUT PERMISSION.

## CHANGING ON THE FLY

**BY: BRIAN WICK, EXECUTIVE DIRECTOR**



I'm starting out with what is on everyone's mind and that is the ongoing drought. The southeast part of the state is in a Level 3 – Critical drought (it's on a scale from 0-4). Cape Cod is considered a Level 2 – Significant Drought and Nantucket is a level 1 – Mild Drought. The state is reminding all registered and permitted water users to limit non-essential water use as best possible. Of course, for cranberries, growing an agricultural crop is essential, so non-essential would be things like washing vehicles, watering lawns, etc. I have attended the state's virtual drought management task force meetings that are now being held every other week. This helps me keep a pulse on what's going on, keep an eye out for cranberry agriculture, hear the long-term weather forecast by NOAA, etc. There is hope that the state may offer some drought relief programs for agriculture. If successful, these would provide some immediate financial relief for ag producers that need to conduct work for both immediate and long-term drought mitigation. As soon as I learn anything from this idea, I'll let our members know. Fingers are crossed that this program will materialize and also, that we get some significant rain!

Because many growers will need to undertake projects to get some drought relief, like digging wells, expanding water holes, etc., there will be scrutiny on these projects. Many of you may recall the drought fact sheet that CCCGA has put out during the most recent drought seasons (2016 & 2020). We are updating the document and will be emailing it out to members, but you will also be able to access it on the CCCGA website in the grower section. We are also providing this document to local conservation commissions so they too can be educated on these activities. With frequent turnover on town boards/committees, having a refresher on what is allowed (and not) on ag projects never hurts. Also on the grower section, we have updated the federal Wetland Protection Act Grower Advisory, which provides guidance on water-management type work from the perspective of the federal regulations and there's an oldie but goodie, the grower advisory on the state's Wetland Protection Act. Both advisories use the "Stop Light" approach, to help growers better understand when a project is good to go, requires caution or can't be done without receiving permission. It's a good time to refamiliarize yourself with these documents if you are going to be undertaking any drought related excavation. As always, give me a call if you wish to discuss a project or reach out to your local conservation planner or wetlands consultant. There's a lot of scrutiny on our industry and with water resources becoming impacted, that's only going to increase. Much but not all of what a grower may do is exempt from regulatory oversight but not everything is. It's better to do a little homework and be sure of what you are considering, rather than being shutdown due to a misunderstanding. Depending on your location, neighbors and/or community – a courtesy notification often helps prevent unwanted or unwarranted challenges. This should be handled on a case-by-case basis, as you know best what might be questioned. Remember, if you do provide courtesy notification, it's just that, a notification for their benefit – it's not asking permission! The worst thing we can do is get permission for exempt activities because then over time, it's no longer an exempt activity if we are always seeking approval. It's a fine line we must walk but with careful planning and thought, it's all doable. I hope that in the days and weeks ahead, all of this drought language will be forgotten, and we'll have enough water to size what appears from my travels to be a good crop and there will be bountiful water for harvest and frost protection!

### **LARCHMONT** IRRIGATION • DRAINAGE PUMPS • LANDSCAPE LIGHTING

Lexington, MA    Manchester, NH  
781-862-2550    603-622-8825

**SINCE 1949**  
**SERVING THE GREEN INDUSTRY**

- Irrigation Supplies
- Pump Stations & Supplies
- Drainage & More

Quality products from the leading manufacturers with unbeatable customer service and always the right price.

**The exclusive Distributor of the original Cranberry Special**

[www.larchmont-eng.com](http://www.larchmont-eng.com)



**Grower Contact: Jonathan Ashley**  
**Senior Manager Grower Relations**  
[jonathan.ashley@refresco.com](mailto:jonathan.ashley@refresco.com)





77 Charlotte Furnace Road  
West Wareham, MA 02576

Peter Beaton: peter@beatonscgs.com  
Rob Rubini: Rob@beatonscgs.com

- Bog Management
- Bog Renovation
- Herbicide / Fertilizer Applications
- Custom Harvesting
- Intergraded Pest Management
- Ditching/ Drainage
- Sanding
- Flume Repair/ Replacement
- Irrigation Installation
- Weeding/Wiping
- Custom Fabrication
- Pruning

## Move water, clay, topsoil or sand.

We have the  
equipment  
for the job!

- Case and Case IH machines
- Late model, low hour rentals
- Parts for all makes, all models
- Field service when and where you need us

97 Turnpike Road, Westborough, MA 01581  
508.845.4343 • 866.590.2273  
[www.monroetractor.com](http://www.monroetractor.com)

## SOIL SOLUTIONS *for* HIGH PERFORMANCE LANDSCAPES



BOG MAINTENANCE  
MATERIALS



BOULDERS, STONE  
AND ROCK SUPPLIES



BOG CONSTRUCTION AND  
RENOVATION MATERIALS



STABILIZED STONEDUST®  
FOR NATURAL ADA TRAILS



SCREENED AND  
BANK SAND

CONSTRUCTION MATERIALS • BIORETENTION SOILS • TOPDRESSING SAND  
ATHLETIC FIELDS • STABILIZED STONEDUST • PLANTING BED SOILS • GREEN ROOF MEDIA



*Experience. Quality. Consistency.*

CONTACT US FOR PRODUCT SPECIFICATIONS, TESTING  
RESULTS, PROJECT ANALYSIS, AND PERSONALIZED QUOTES.

JUSTIN O'CONNOR  
[JUSTIN@READCUSTOMSOILS.COM](mailto:JUSTIN@READCUSTOMSOILS.COM)  
781.828.6300



[READCUSTOMSOILS.COM](http://READCUSTOMSOILS.COM)





VISIT US AT  
81 CHARLOTTE FURNACE RD.  
WEST WAREHAM, MA

## COMPETITIVELY SUPPLYING ALL OF YOUR GROWING NEEDS

Fertilizers & Chemicals • Irrigation Supplies  
Pest Management • Safety Equipment • and more



WWW.PROGRESSIVEGROWER.COM  
508-273-7358

*Family Farmed  
Since 1934*

- Competitive returns
- Commitment to Massachusetts
- Agronomic programs

*For more information  
please contact*

James Ross  
Grower Relations & Agronomy Manager  
(774) 435-0184  
jross@decascranberry.com  
decascranberry.com

Part of the Fruit d'Or Group



## Maximize the fruit of your labour.

Our agronomists work closely with our grower partners to improve yields

**We offer competitive pricing**

Our cranberries are processed in a new state-of-the-art facility

Our grower partners obtain higher yields than the regional average

FRUIT D'OR IS CURRENTLY LOOKING TO  
**CONTRACT NEW ACRES.**

**Contact** Simon Bonin our Director of Grower Relations and Agronomy:  
819-291-0395 - sbonin@fruit-dor.ca

## Fruit d'Or

*Largest independant Cranberry processor. In business since 1999.*



# BLOGS AND BLURBS

## Attention Growers Farming Near Railroad Tracks

MassDOT, who has oversight of railroads in Massachusetts, wants to insure that growers farming adjacent to railroad lines be extra vigilant this harvest season. With water bodies that are directly adjacent to tracks, when drawing down water, particularly for flooding events, it could cause destabilization of the bank holding the track infrastructure. In the worst case scenario, it could result in a complete embankment failure. This is a costly and dangerous situation. During times of drought, this destabilization potential is more critical. They ask that growers pay close attention to the integrity of the embankment prior to drawdown or flooding activities. Drawing the water as slowly as possible would be helpful.

MassDOT has been flying drones to visually inspect the banks of known water bodies adjacent to bogs. If any grower has questions or at all has concerns that the bank may be susceptible to failure, they should contact MassDOT immediately. The contact person is Carlos Velasquez at 857-368-8918 or [carlos.a.velasquez@dot.state.ma.us](mailto:carlos.a.velasquez@dot.state.ma.us). You may also wish for the state to conduct another inspection closer to harvest and it is encouraged that you create a dialog with MassDOT to open the lines of communication to see what might be possible.

---

The following is an important payroll consideration for grower and sustaining members. You may be eligible for the Employee Retention Tax Credit Program. The following has been written by CCCGA's accountant and tax advisor, Joshua Volta of Farm Credit East.

### Employee Retention Credit (ERC):

Have you heard about the ERC?!

The ERC is a fully refundable tax credit for employers who had employees during calendar quarters of 2021 and experienced a full or partial shutdown or whose gross receipts were less than 80% of the same quarter in 2019.

Here is an example of the quarter test:

Q1 2019 gross receipts were \$150,000.

Q1 2021 gross receipts were \$75,000.

2021 gross receipts are less than 80% of the gross receipts compared to 2019. Therefore the employer would qualify for that quarter.

There is a maximum of 70% (\$10,000 per employee per quarter) for qualified wages paid between January 1 and June 30 2021.

Here is an example of credit calculation:

An employee had \$15,000 of eligible wages in Q1, the max allowed eligible wages per quarter is \$10,000. 70% of the eligible wages is \$7,000. The employer would receive a \$7,000 refundable credit.

If you qualify for the ERC you need to amend your payroll filings for the applicable quarter.

**\*\*Certain restrictions apply\*\***

So what are you waiting for!? Contact your accountant or payroll associate to find out if you qualify!

---

## BLOGS AND BLURBS - CONTINUED

The Cranberry Marketing Committee met this past week and released their estimate for the US crop. Massachusetts is forecasted to have an increase in production of 19% from last year. The overall US crop is expected to come in 24% above last year's total. Quebec is expecting a record crop, 2.9 million barrels is predicted, and along with British Columbia and the Atlantic Maritimes, the total North American crop is expected to be about 12 million barrels. For comparison purposes, the USDA/NASS estimate is included in the table below. They don't calculate Washington production and their methodology is also quite different than the CMC process. Traditionally, the CMC crop forecasts have proven more accurate, partly because they are more timely. CCCGA utilizes the CMC figures in our crop forecast release to the media. Under the guidance of Michelle McGrath, CCCGA's media consultant, we have already picked up good press on the Massachusetts crop forecast release, which generates some news buzz ahead of the start of the harvest season.

**2022 US Cranberry Crop Forecast**

	CMC	USDA/NASS
MA	1,889,000	2,000,000
NJ	558,000	590,000
OR	490,000	550,000
WA	163,000	-
WI	5,220,000	4,330,000
<b>TOTAL</b>	<b>8,319,000</b>	<b>7,440,000</b>





# CRF ANNUAL GOLF TOURNAMENT CONTINUED

*Continued from cover*

**AND OFF THEY GO!**

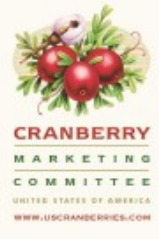
The tournament winning team this year was Team Gilmore Cranberry, consisting of XXXXX

CRF is always looking for new and creative ways to fundraise for horticultural research. If anyone is interested in helping develop or support new ideas, please give Dawn Gates-Allen a call (508-726-6052) or email her at [dgatesallen@cranberries.org](mailto:dgatesallen@cranberries.org).



## UPDATES FROM THE CMC

BY: KAREN CAHILL



### ***Annual Summer Meeting***

The CMC's annual summer meeting will take place Tuesday, August 16 and Wednesday, August 17, 2022 and ***will now include a virtual option*** in addition to the in-person option at Seaview Hotel in Galloway, New Jersey. The Cranberry Institute will host its annual meeting the afternoon of Wednesday, August 17. The ACGA's 2022 Summer Meeting & Field Day will take place Thursday, August 18 at Rutgers. Visit [www.uscranberries.com](http://www.uscranberries.com) for more meeting information and to register.

### ***Data & Reports***

CY2021 third quarter summary reports, as well as several comparison reports, can be found by clicking "Data and Reports" under the "Industry" menu on [www.uscranberries.com](http://www.uscranberries.com). A few general observations when comparing YTD (September 1 – June 30) for CY2020 vs CY2021 are as follows:

- Adjusted Beginning Inventory decreased 6.8% (323,473 bbls)
- The Foreign Acquired decreased 6.7% (down 129,012 bbls) from 2020
- YTD Domestic sales have decreased 5.8% (down 354,958 bbls)
- Foreign sales have increased by 8% (up 189,940 bbls)
- Total Sales & Shrinkage decreased 3.2% (278,303 bbls)
- Total ending inventory has decreased by 1,256,866 bbls or 21.8% from this time last year. This is significantly impacted by a decrease of fruit in freezers of 569,138 bbls or 18.2%, and a decrease of barrels in concentrate of 527,946 bbls or 30%.

### ***Bravo at Codex***

After ten years, the Codex Committee on Pesticide Residues (CCPR) has recommended to advance the Bravo (chlorothalonil) cranberry MRL for permanent establishment. Codex first proposed eliminating the cranberry Bravo MRL in 2012. CMC obtained a four-year extension to generate data to keep the MRL. A temporary MRL was maintained, and the CMC obtained two TASC grants to generate the data. That data was submitted to Codex in 2016, but was rejected by the Codex reviewers over concerns regarding the compound and storage stability. Working with the CMC, Dr. Caroline Harris at Exponent UK, EPA, and FAS, obtained a third Bravo TASC grant to address the Codex concerns. In an unprecedented move, the U.S. Codex delegation pressed for and succeeded with a second four-year extension of the MRL. The TASC grant addressed the issue, and the data was forwarded to the Codex technical experts for review in 2020. The experts recommended the MRL only to have Great Britain (newly independent from the EU) raise an objection, which delayed the process another year. Those objections were overcome and last week at a virtual meeting, CCPR recommended keeping a permanent cranberry MRL for chlorothalonil. The official vote, which should be perfunctory, will occur by the end of the year. This was a huge effort and victory for the industry. We know that Bravo has been lost in the EU and is under threat in Canada and Great Britain, but maintaining the Codex MRL has a good benefit to the industry. CMC will let industry members know when the permanent MRL is officially adopted.

### ***New Export Markets***

During a full Committee meeting in June, members unanimously approved in-market representation in South America and Southeast Asia. CMC had undergone market research in the fall of 2021 to identify new emerging markets for its export program. As a result, at the CMC's 2022 annual winter meeting, members approved moving forward with an RFP process for in-country representation in Malaysia, Singapore, Brazil and Colombia. CMC received two proposals for South America and four for Southeast Asia.



*Continued from previous page*

The RFPs were reviewed by the RFP subcommittee, as well as CMC staff and CMC's international marketing consultants, Bryant Christie Inc., (BCI). CMC staff and BCI conducted three Zoom interviews and a recommendation of River Global for representation in South America and Terroir & Spice for Southeast Asia was brought to the Committee in June. River Global has offices in both Brazil and Colombia and has developed a good relationship with USDA FAS through working with other cooperators such as apples and blueberries. River Global's proposal included activities for industry relations, trade servicing, trade show exhibition, retail merchandising, PR, and webinars for both importers and exporters. Terroir & Spice's (T&S) proposal included consumer, trade, social media, retail and trade activities. T&S also has experience working with FAS and has offices throughout Southeast Asia, which could be an added benefit should the Committee want to expand to additional markets in the future.



Farm Credit East is deeply rooted in our customers' success – and Northeast agriculture. In fact, no one knows ag quite as well as Farm Credit East. So if you're looking for financing or business services for your agricultural operation – of any size or type – look to Farm Credit East. Our mission is to grow your success.

FARMCREDITEAST.COM  
508.946.4455

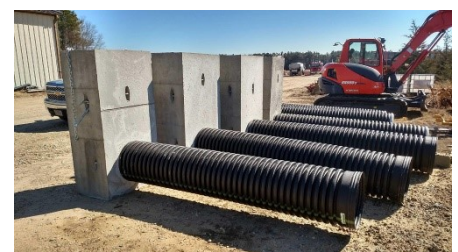
- Loans and Leases
- Tax Services
- Payroll Services
- Business Consulting
- Record-keeping
- Country Home Loans
- FarmStart for New Businesses
- Real Estate and Equipment Appraisals



## FLUMES FOR SALE

CONCRETE & ADS PIPE • INSTALLATION AVAILABLE

JOHNSON CRANBERRIES: 508-277-7035



## NOTES FROM BEACON HILL

BY: JOHN FERNANDES



The Massachusetts legislature wrapped up the formal portion of its two-year session on July 31<sup>st</sup> with a marathon almost 24-hour session that actually extended into the late morning of August 1<sup>st</sup>. The current session runs for two years from January 2021 to December of 2022. All controversial legislation, however, needed to be dealt with by the end of July 2022. Any legislation passed between now and the end of the year, and there will be significant legislation yet to come, must be done by unanimous consent of all legislators.

Many major pieces of legislation were passed this session including bills that related to transportation, climate change and energy, mental health, and the allocation of significant amounts of federal ARPA funds distributed across all sectors of the Massachusetts economy to offset some of the impacts of the now two- and one-half year Covid pandemic.

As for the CCCGA priorities, this two-year session finds the cranberry industry fairing extremely well in securing government assistance to the industry. Here is a summary of the success of the team effort between the CCCGA leadership working with the legislative delegation led by Senator Mike Rodrigues and Representative Bill Straus.

1. **Ag Innovation Program:** Another two years of funding of \$1,000,000.00 per year for grants to cranberry growers for bog renovation projects occurred from the original five year, five-million-dollar (\$5,000,000.00) funding allocated through the environmental bond bill of the 2019/2020 session. That funding will extend through the 2023/2024 fiscal year.
2. **An additional \$5,000,000.00 for Ag Innovation and water infrastructure projects** was allocated by the state legislature this year from federal ARPA funding to be spent over the next several years.
3. **Energy efficient grant funding:** \$500k was allocated for grants to growers a couple years ago for such purchases. An additional \$1.6 plus in APRA funding was allocated by the legislature for additional grants for such purchases over the next few years.
4. **Tax Credit:** a high priority of the Cranberry Task Force to allow a tax credit for capital investments made by cranberry growers was passed into law this past year and is retroactive for years 2020-2011 and will be applicable for two more years to come.
5. **Cranberry research:** \$100k for cranberry health research at UMass Dartmouth, and a commitment for UMass to fund the Cranberry Station were included in this year's budget. Let's not forget the commitment of millions of dollars for the renovation and expansion of the Cranberry Station itself.
6. **Workforce development:** \$100,000 was placed in the budget by way of a senate amendment sponsored by Sen. Moran (thank you!) to be expended as a grant to the University of Massachusetts at Dartmouth to conduct a study and submit a report on the workforce development needs of the commonwealth's cranberry industry. The university shall consult and collaborate with the University of Massachusetts at Amherst's Cranberry Station and the CCCGA in conducting the study. The report shall identify and assess current workforce challenges facing the industry including: i) existing workforce pipeline issues; (ii) emerging workforce needs; (iii) the development of workforce training programs at community colleges, state universities and regional vocational and technical high schools; (iv) the feasibility of grant, scholarship and other pipeline development initiatives to support current and future needs for full and part-time employees; (v) an assessment identifying chronic and acute workforce shortages affecting the industry; (vi) the need to provide a greater awareness of the cranberry industry as a career; (vii) the need for employees with technology skills; and (viii) the use of drones, robotics, global positioning systems and data management technology. The report is to be completed by December 31, 2022, although that time line may need to be extended for such a comprehensive review.

*Continued on next page:*



7. **Cranberry Educational Center in southeastern Massachusetts and further cranberry industry grants:** the still pending Economic development bill contains language that not less than \$250,000 shall be expended for the design, engineering, and feasibility study of establishing a [cranberry educational center in southeastern Massachusetts](#). It further provides that not less than \$1,000,000 in bond money shall be expended for the construction of the cranberry educational center.

The pending bill further provides that not less than \$1,500,000 shall be expended on grants or other financial assistance to support the economic growth and viability of the commonwealth's cranberry-growing industry.

The economic development bill was not finally acted upon by July 31<sup>st</sup>, but it is expected that much of what is in that bill will find its way to passage before the end of December. So, we will continue to follow this throughout the coming months.

8. **Dual use solar.** The Climate Change and Energy legislation sent to the governor contained a provision necessary to the proper siting of dual use solar on agricultural land. The current provisions of Mass Law Ch. 61A puts a cap on the use of solar on agricultural land to 125% of the needs of the farmer/ grower electrical use on the land. That provision was placed in the law to allow farmers and growers to use solar to power their businesses. That law should have been amended when dual use solar was authorized as it is obvious that the purpose of dual use is to use ag land to also produce solar that can benefit the surrounding community. The provision in the climate bill provides for that change in the law and confirms that qualified dual use solar projects will still be considered 61A eligible if such renewable energy generating source does not impede the continued use of the land for agricultural or horticultural purposes of chapter 61A. The legislation also provides that renewable energy generating sources located on land used primarily and directly for agricultural purposes pursuant to ch. 61A, section 1 or land used primarily and directly for horticultural purposes pursuant to ch. 61A, section 2 shall be subject to the provisions afforded to land used for agriculture under section 3 of chapter 40A.

On other matters,

**Labor Law Legislation:** The CCCGA leadership continued discussions with stakeholders and legislators, including the Labor and Workforce House Committee Chair, Josh Cutler, regarding several labor bills that have not received final action. The bills propose to amend long established labor rules on overtime, mandatory days off during harvest, and minimum wage changes. We are continuing to advocate our concerns to leadership, and we appreciate Chair Cutler's attentiveness and leadership on these issues.

**Glyphosate Commission:** We are also closely following the work of the Glyphosate Commission, which will next meet in September 2022.

It is important to emphasize the incredibly good fortune the cranberry industry has received these past several years. This is an immense amount of support. It is a testament to your experienced and respected legislative delegation's hard work, and ultimately with the help of the Governor, Lt. Governor, and their administration, particularly under the leadership of John Lebeaux at MDAR. It is a great pleasure to work with your hard working CCCGA board members and this unbelievable delegation of legislators led by Mike Rodrigues and Bill Straus. Please, when you see your senator or representative or administrative leaders, thank them for their advocacy and hard work!

Stay tuned for further updates on these programs and legislative initiatives.

# WANTED: CRANBERRY ARTIFACTS!!

Pam and Michael Carr of Plymouth Bay Winery are looking to expand their cranberry display down on the Plymouth waterfront. They produce wines, jams and sauces from berries, native grapes and of course our cranberries. If you have something to donate please contact Kim at the CCCGA at [kmiot@cranberries.org](mailto:kmiot@cranberries.org) who is coordinating items.



OCEAN SPRAY,  
A GROWER-OWNED  
COOPERATIVE

CONTACT US AT  
[GROWERRELATIONS@OCEANSPRAY.COM](mailto:GROWERRELATIONS@OCEANSPRAY.COM) OR CALL  
1-800-334-4204







**At MTE, service is our priority.**

**Call or visit us online today!**

**1-888-708-5296**

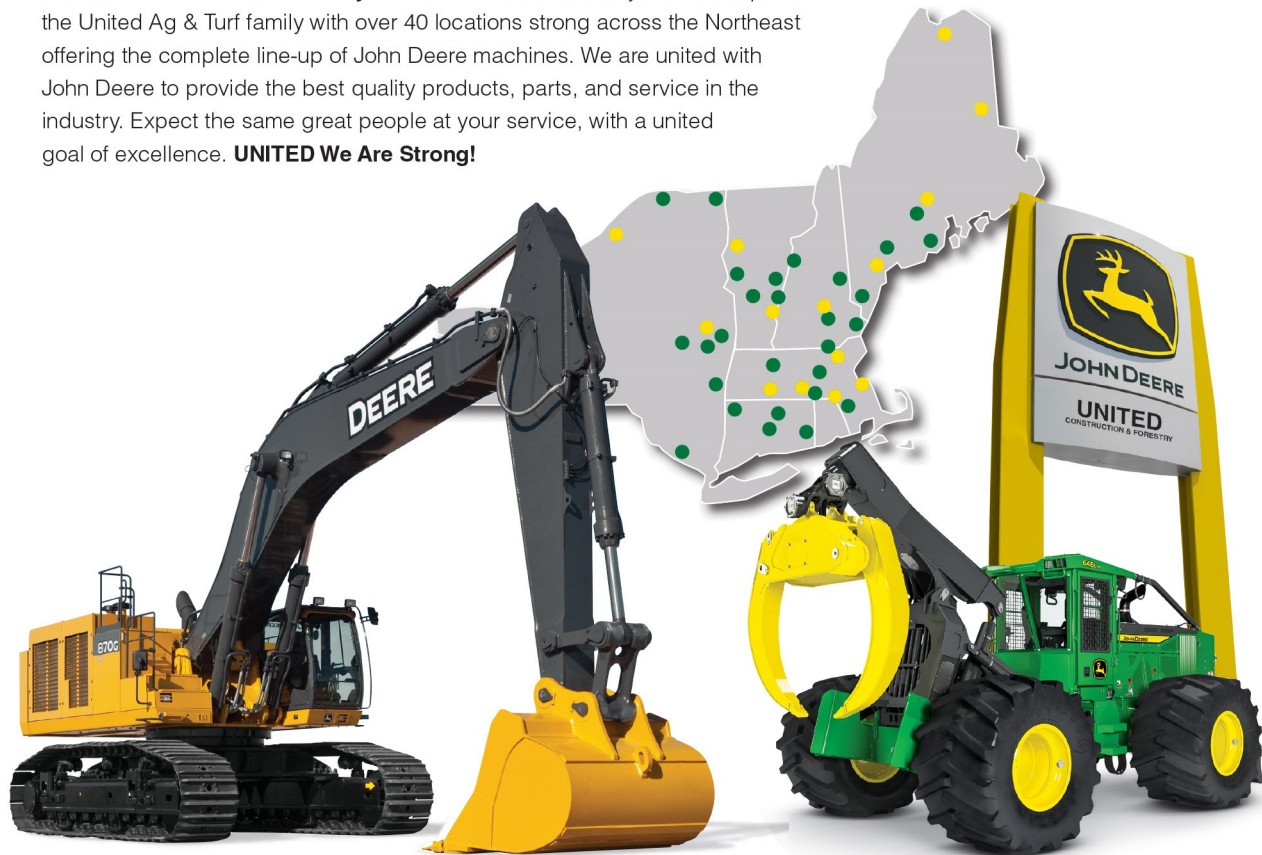
**[www.mteequipmentsolutions.com](http://www.mteequipmentsolutions.com)**

**[sales@mte.us.com](mailto:sales@mte.us.com)**



# WE ARE UNITED

We are proud to announce that Nortrax and Schmidt Equipment are now **United Construction & Forestry** with 14 locations to serve you. We are part of the United Ag & Turf family with over 40 locations strong across the Northeast offering the complete line-up of John Deere machines. We are united with John Deere to provide the best quality products, parts, and service in the industry. Expect the same great people at your service, with a united goal of excellence. **UNITED We Are Strong!**



## UNITED

Construction & Forestry

#### MAINE

Heron 866-416-3764  
Houlton 866-416-3765  
Ft. Kent 207-834-6701  
Westbrook 866-416-3763

#### MASSACHUSETTS

North Oxford 800-922-8295  
Billerica 800-531-2266  
Plymouth 800-916-0997  
Springfield 800-734-5594  
Swansea 800-456-6885

#### NEW HAMPSHIRE

Pembroke 800-852-3338

#### NEW YORK

Clifton Park 800-333-0620  
Gouverneur 315-287-0703

#### VERMONT

Springfield 800-639-3071  
Williston 800-422-4955

[www.UnitedCF.com](http://www.UnitedCF.com)



## IN MEMORIAM

### REMEMBERING OUR CCCGA MEMBERS AND FAMILIES

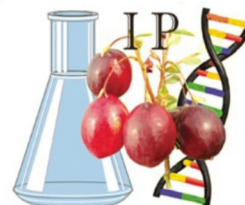


David B. Mann passed peacefully at his home in Buzzards Bay on August 8th. He was 92. In his younger years, Dave built a cranberry bog with his father. His passion was always cranberries. He was instrumental in the transition to water harvesting and irrigation systems for frost protection. Dave was a member of CCCGA, serving as president from 1977-1979. Dave served on numerous boards, yet always took time to enjoy family, friends, boating, motorcycling and flying. Dave continued to visit his farm crew daily for coffee break as recently as last week. Dave was predeceased by his wife Marjorie and son Gordon. He is survived by his son, Keith and daughter Susan and her husband Jackson. David leaves three grandchildren. Donations can be made in his memory to Cranberry Research Foundation, 265 D South Meadow Road, Plymouth, MA 02360.

## INTEGRITY PROPAGATION

The Cranberry Industry's First and Only Foundation Level Nursery

### TAKING ORDERS FOR 2022 & 2023



The source for Rutgers University Certified Varieties:

**CRIMSON QUEEN® DEMORANVILLE® MULLICA QUEEN®**

**SCARLET KNIGHT®** the fresh fruit variety, **WELKER™** recommended for the west coast,

**HAINES™** Tested in advanced replicated trials in OR, WA and WI, plots exhibit:

- Berries with uniform full color even in deep canopies
- Disease resistance superior to Stevens
- Less fruit rot than Stevens in replicated field plots
- Consistent high yields
- Mid season ripening
- Round berry with high firmness perfect for SDC

and Dr. Vorsa's latest release:

**VASANNA™** In OR, WA, WI and BC tested in replicated field trials exhibits:

- Mid-season good color
- Especially high yields in BC peat and WI sandy soils



Vigorous plants with multiple branches

Providing 100% 'DNA Fingerprinted', 'Virus Tested' and 'Phytoplasm Tested' Plant Material

Contact us at 609-923-3143, or email [contact@integritypropagation.com](mailto:contact@integritypropagation.com)

[www.integritypropagation.com](http://www.integritypropagation.com)



IT MAY BE COMPACT,  
BUT ITS REACH IS WORLDWIDE.





Step into a Kubota excavator and it's easy to see why it earned the title of #1 selling compact excavator in the world\*. Six heating and cooling vents and an easy-open front window provide the kind of comfort that keeps operators in the cab and getting the work done. Minimum tail swing, industry-leading bucket breakout force and an optional quick coupler are just some of the additional features that give the Kubota compact excavator such a huge reputation.

**SALES • SERVICE • PARTS • RENTALS**



*Your #1 source for Kubota products since 1979.*

**45 North Main Street, Carver, MA  
508-384-0011 • [www.norfolkpower.com](http://www.norfolkpower.com)**

   [KubotaUSA.com](http://KubotaUSA.com)

\*According to 2016 OEM Off-Highway Research, Kubota has the largest compact excavator market share in the world. ©Kubota Tractor Corporation, 2019.



## TOURS AND EVENTS

BY: KIM MIOT



### Public harvest bog tours have a new starting location!

CCCGA would like to say a big thank you to Dick and Judy Ward for offering their barn for our 2022 fall public bog tours! This location is great for parking, bus pick up and space for us to sell Massachusetts Cranberries merchandise. We are hoping to also sell fresh cranberries and maybe even have a small display area to showcase all that goes into cranberry farming. This location is centrally located, and we are excited for Dick Ward join us when he can to bring his generational knowledge and stories to the public. This fall tour season is looking great, and tickets are live as of Friday, August 12<sup>th</sup>! We welcome back our tour guides and assistants from last year and look forward to a few new faces that bring a passion for cranberries with them.

*Continued on next page:*



*P.A. Landers, Inc.*

Serving Eastern Massachusetts Since 1978

**PREMIUM BOG SAND**

HANOVER · PLYMOUTH · FORESTDALE

*MEETING THE NEEDS OF GROWERS EVERY SEASON OF THE YEAR*

508-660-6404 · 781-826-8818

Monday - Friday 7AM - 5PM · Saturday 7AM - 12PM

**BOG CONSTRUCTION · MATERIAL DELIVERY · EQUIPMENT RENTAL**



## **TOURS AND EVENTS CONTINUED:**

**BY: KIM MIOT**

### **Assistant Tour Guide job openings Southeast MA cranberry bog tour guides needed**

**The Cape Cod Cranberry Growers' Association** is seeking enthusiastic Assistant Tour Guides to help with 90-minute bus tour groups at cranberry bogs in southeastern Massachusetts. This part-time, seasonal position is ideal for self-motivated candidates looking for a fun way to make extra income.

**Job Title: Bog Tours Assistant**

**Hours Per Week: Part-time, Seasonal, Flexible schedule**

**Base Pay Rate: \$18 per hour**

#### **About the position:**

Assistant Tour Guides will support the lead Tour Guide on cranberry bog tours both on the tour bus and at the bog. Duties will include, but are not limited to, the following: check in guests, direct bus driver to bog location, research best route to bog prior to tour date, put out safety signage at bog location, interact with tour guests, assist with on-site guest management. Some office work may be included such as prepping for tours.

#### **Skills and Experience Required:**

- Ability to work in an office setting, on a tour bus as well as outside at a working cranberry bog, sometimes under adverse weather conditions
- Organized, attention to detail and a strong ability to multitask and meet deadlines
- Flexibility and adaptability to accept varying tasks and responsibilities
- Ability to work both independently and as part of a cooperative team
- Dependability and accountability are absolutely a must!
- Ability to interact professionally and courteously with bog tour guests and growers with diverse backgrounds and personalities
- Outgoing personality that is comfortable interacting with the general public
- A commitment and supporter of cranberry agriculture
- Must have valid driver's license and own automobile
- Must be able to lift objects up to approximately 40 pounds
- Tours operate seasonally September and October, however, as the program expands, tours will be operational May - November.
- Some weekends may be required
- Training will be provided

#### **Schedule openings/needs:**

Weekdays Monday to Friday September-October

Weekends during harvest -October

Tours run primarily between 9am-4pm with most scheduled in the morning or early afternoon

There are usually 1-3 tours per day

*Continued from previous page*

**Work Location:** Will vary depending on bog location for tours but generally tours will originate in Wareham, Middleboro or Plymouth.

**This Job Is Ideal for Someone Who Is:**

Reliable

Enjoys interacting with people

Thinks quick on their feet

Strong advocate for cranberry agriculture

**Application Instructions:**

Please send a brief letter of introduction and resume to [bogtours@cranberries.org](mailto:bogtours@cranberries.org)

*The Cape Cod Cranberry Growers' Association is an Equal Opportunity Employer.*

*Continued on next page:*

## Web-Based Irrigation Management



**HORTAU**  
SIMPLIFIED IRRIGATION\*

- Manage Crop Stress in Real Time
- Frost Protection and Mobile Alerts
- Remote Start and Automation
- Reduce Energy and Water Use
- Full Service and Support



For more information call **(920) 246-9130** or visit [hortau.com](http://hortau.com)



**We need bog tour guides!**

**Spread your knowledge, get paid and help support our industry.**

**The Cape Cod Cranberry Growers' Association** is seeking enthusiastic tour guides to lead 90-minute bus tour groups at cranberry bogs in our area. This part-time, seasonal position is ideal for self-motivated candidates looking for a fun way to make extra income. We are looking for people who can talk about the cranberry industry, its history, health benefits, and growing seasons. Family grower storytelling is a plus if you are a grower or a previous grower, but this is not required. This is a great position for grower family members, college students or cranberry workers who want to make extra money.

**Job Details & Requirements:**

- Compensation is \$50 per tour.
- Tours last approximately 90 minutes and have anywhere from 15 to 50 guests. Guides must have the ability to walk/stand for the tour duration on a bus and at the side of the bog, on uneven ground. Guides will need to be able to talk, ride and stand backwards on the bus for an extended period.
- Guides are expected to arrive 20-minutes before the allotted start-time of the tour.
- Qualified candidates must be skilled in both customer service and public speaking, have a positive attitude, be team-oriented, have a flexible approach and are committed to supporting the Massachusetts cranberry industry.
- Successful candidates must have the ability to lead groups outdoors, sometimes under adverse weather conditions.
- Dependability and accountability are absolutely a must!
- Tours operate seasonally September and October, however, as the program expands, tours will be operational May - November.
- Tours are conducted on weekdays and several weekends in October during harvest.
- For scheduling, guides must be able to provide their availability to work at least 2 to 3 weeks in advance, more is preferred.
- Training is required and will be provided. Guides will start shadowing a seasoned tour guide and, when ready, will operate tours on their own. Most tours will have an associate to assist with driving directions, timing, monitoring guests and other logistics.

Job Type: Part-time, Seasonal, Flexible schedule

Pay: \$50.00 per tour

**Schedule openings/needs:**

- Weekdays Monday to Friday September-October
- Weekends during harvest October
- Tours run primarily between 9am-4pm with most scheduled in the morning
- There are usually 1-3 tours per day

*Continued from previous page*

Work Location: Will vary depending on bog location for tours but generally tours will originate in Wareham, Middleboro or Plymouth.

This Job Is Ideal for Someone Who Is:

- Reliable
- Enjoys interacting with people
- Thinks quick on their feet
- Strong advocate for cranberry agriculture

Serious candidates should email [bogtours@cranberries.org](mailto:bogtours@cranberries.org) with their resume and cover letter stating why they would be a good fit for this role. Please state any experience with leading groups of people or public speaking.



**IAS**  
WWW.IASSYS.COM  
*Grow Smarter, Grow Better*

**Find out what so many growers already know**

- The “Gold Standard” for automation and monitoring
- American Made
- The 1st choice for cranberry growers everywhere
- Reduce overhead, energy costs and water usage
- Easy to use
- Introducing the ISM100 Soil Moisture Meter

**Call us at 800-549-4551 or email: [info@iassys.com](mailto:info@iassys.com) to learn about our quantity discounts!**



**Nutrien**  
Ag Solutions™  
For All Your Chemicals, Fertilizer & Nutritional Needs.

**Partnering with Growers to Feed the World.**

**Consider a Fruit Sizing and Bud development Fertilizer Application in August, you won't regret it!**

**Mike Utley**  
Branch Manager  
(508) 866-4429  
96 Forest St  
Carver, MA 02330

**Jeff Utley**  
Operations Manager



**75+ YEARS OF KNOWLEDGE & EXPERIENCE**  
*handling cranberries from bogs, to bins, to baskets...*

**CHIP MATHEWS**  
Director of Purchasing  
P: (856) 455-1000, 7295  
C: (401) 361-1310  
[chipmathews@lassonde.com](mailto:chipmathews@lassonde.com)

**KATHLEEN PATTERSON**  
Plant Manager  
P: (508) 866-4788, 10  
[kathleen.patterson@lassonde.com](mailto:kathleen.patterson@lassonde.com)

QUALITY PRODUCTS GROWN BY INNOVATIVE THINKERS



## SENATOR THERESE MURRAY CRANBERRY EDUCATIONAL SCHOLARSHIP AWARD RECIPIENT



Congratulations to Alixandria Gates of Middleboro, this year's Senator Therese Murray Cranberry Educational Scholarship recipient. Alixandria is attending Messiah University in Pennsylvania, studying special education, speech and language pathology. Her career choice became obvious after she spent a night at a prom for people with special needs called Night to Shine. That night changed the guests lives and hers as well. She would like to eventually be hired at a school or children's hospital. She also enjoys archery, photography and weightlifting. She is the daughter of Barry and Mari Gates of Turkey Swamp Farm LLC. We wish Alixandria much success and are pleased to present her this award.



### NOR'EAST HYDROSEEDING INC



Custom Screening Available On Site  
Contact Marc Wilson at (508) 889-9725 or  
[nehydroseeding@hotmail.com](mailto:nehydroseeding@hotmail.com)



# Guarantee a Flying Start to Next Season

## Top Reasons to Use Bumblebees

- Bumblebees forage at temperatures as low as 40°F, honeybees forage when temperatures are 55°F and higher.
- Bumblebees do not adjust foraging times to avoid wind, a honeybees foraging is stopped when wind speeds reach 15 mph.
- Bumblebees can use “buzz pollination” or sonication to release pollen from flower anthers, honeybees do not sonicate to collect pollen.
- Bumblebees can deposit larger quantities of pollen to the stigma as compared to honeybees, requiring less visits for pollination.
- Bumblebees tend to have a more erratic flight pattern than honeybees which facilitates the movement of pollen across rows.
- Bumblebees will forage in lower light conditions than honeybees.



Koppert's Quad is especially designed for outdoor pollination with four hives inside; it is buzzing with bumblebees ready to pollinate.



800.928.8827 [info@koppertonline.com](mailto:info@koppertonline.com)  
[www.koppertus.com](http://www.koppertus.com)



**KOPPERT**  
BIOLOGICAL SYSTEMS



# Join SEE PLYMOUTH

Membership Has Its Privileges



See Plymouth  
MASSACHUSETTS

Find out how: 508.927.6604  
[SeePlymouth.com/Memberships](http://SeePlymouth.com/Memberships)



 Destination Plymouth  
MASSACHUSETTS

 MASSACHUSETTS  
visitma.com

 Town of  
PLYMOUTH

 Plymouth County  
Convention & Visitors Bureau  
MASSACHUSETTS



## LET'S TRY SOME CRANBERRY SORBET!!!

### Ingredients

3 cups Cranberry Puree (see recipe below)  
1 ½ cups sugar  
juice of 1 lemon

### Method

1. Pour cranberry puree into 2 quart saucepan and place over medium heat.
2. When juice is simmering, add sugar and stir until it is completely dissolved.
3. Remove from heat and pour into a heat-safe container.
4. Refrigerate overnight, or until cool.
5. When ready to make the sorbet, stir the juice of one lemon into the mixture, then freeze in 1 or 2 batches in an ice cream machine, according to manufacturer's instructions.
6. Sorbet is ready to eat.  
For a firmer sorbet, transfer to a plastic container and place in freezer.



### Cranberry Puree

1. Combine 1 cup of fresh or frozen cranberries and ¼ cup of water in saucepan.
2. Bring to boil and turn down to a simmer.
3. Simmer for 3 minutes.
4. Cool to room temperature.
5. Transfer to blender and blend until smooth. Be careful not to blend cranberries while hot as the pressure will cause the blender lid to pop off.

## BILL'S TRACTOR REPAIR

Servicing  
Diesel and Gasoline  
Engines  
On Sight Repairs

Bill Alger  
317 Elm Street  
Kingston, MA 02364  
Cell: 617-688-6961



*"Serving Northeast Agriculture  
Since 1984"*

**Arthur Carroll Insurance Agency**

Family Owned and Operated  
Offices in Farmington, ME and Thomaston, CT

[www.arthurcarrollcrop.com](http://www.arthurcarrollcrop.com)

ME: Office: 855-305-2010

CT Office: 860-283- 6540

Welding Services  
**Cole's Mill Equipment Repair**  
508-789-0618

On site Heavy Truck & Equipment Repair

Andrew Cole - Owner • [colesmillrepair@gmail.com](mailto:colesmillrepair@gmail.com)





## **CALENDAR OF EVENTS**

**CCCGA Board of Directors Meetings  
September 8th, & December 15th  
8AM @ CCCGA Office, Plymouth**

---

**Plymouth Waterfront Festival  
Saturday, August 27th  
Plymouth**

---

**CCCGA Annual Meeting  
Wednesday, August 31st  
Oiva Hannula & Sons, Inc., Carver**

---

**Massachusetts Day at the Big E  
Thursday, September 22nd  
West Springfield**

---

**Cranfest '22  
Friday, November 11th & Saturday, November 12th  
Plimoth Patuxet Museums, Plymouth**

---

**America's Hometown Parade  
Saturday, November 19th  
Plymouth**

**FOR SALE**

**WANTED**

**FOR LEASE**

**FOR SALE:** 43' Berry trailer. Tractor driven 4" Pacific berry pump.  
Call Wayne: 508-941-4220

**FOR SALE:** York Rake, 8 feet long, "Scarafar", 2 front tires, good condition.  
Call 508-746-0916.

**FOR SALE:** 13.38 acres of Ben Lears & Early Blacks. The property consists of a 10 acre reservoir & 45 acres of upland a section of upland has 3 possible house lots with right-a-ways. Two irrigation pumps & a lift pump to retrieve water for reservoir. A 54X16X60 insulated & heated Morton Building. Property located in Carver. Call 508-866-4916.

**FOR SALE:** Beautiful, secluded 100 acre property in Carver, MA. 35 acres of ocean spray dry picked cranberries, 4 acres of Christmas trees, cranberry museum and gift shop that caters to Argo tourists. Please call 339-933-0207 for more information or to make an offer!

**BOG FOR LEASE:** Ocean Spray Cranberry A-pool bog for lease, will negotiate 8 acres. 4.5 acres of Early Black, 2 irrigation pumps, 1 lift pump 4 1/2 acres of pop-up, 3 1/2 acres of traditional sprinklers Spring fed reservoir. Bog located in West Wareham. Please call 508-748-1137

**FOR SALE:** 305 Chevy with Berkeley Pump, propane, 10 ac \$5500. - Kubota 3650 dual wheel tractor external hydraulic, 3 pt \$10000. - Used aluminum flumes 36,24,15 inch good shape, \$BO - 3pt hitch drainage tile puller like new, \$ 4200. - 8&10 inch PVC mainline pipe - Berkeley 12 in flow pump B10GRMBM, \$2500.  
Call 508-866-1149 or 508-269-3693

**FOR SALE:** Cranberry Water Harvester, in excellent condition, can be seen locally, asking \$3,800 or B. O. Call 508-802-1067 and ask for Doug.

**FOR SALE:** One Kubota four cylinder motor with clutch and Berkley pump. Runs fine. \$5000. Two four wheel drive bog sanders with Wisconsin motors and International drive trains - \$4000. or best offer. Over 100 Rainbird #30 H sprinklers or risers 12" -14" \$10. each. Four Wisconsin motors for use or parts - make an offer. Please call John at 508-509-3584 with any questions.

**FOR SALE:** New-Unused Furford Cranberry Picker and Pruner Selling at Cost Harvester - \$13,900. Shipping From Washington state - \$685. 20 Burlap bags - \$77. Expenses - \$38. Total Cost \$14,700. Call John 207-985-1288

**FOR SALE:** Home and bogs. 3500 sq ft home with garage. Two barns of approx 3,000 sq ft. 12.5 acres of bog, mostly hybrids. Over 18 acres total. Two pumps with automation. Located in South Middleborough.  
Call 508-333-0355

**FOR SALE:** Three "vintage" Wisconsin engines. York Rake, 8' 4", good condition, with a grading blade (Scarafar), York Rake RW Serial #2323 Eight (8) foot water reel, side arm picker, reel in front. "Vintage" cranberry boxes, excellent condition, stored inside, \$15.00 each. Call 508-746-0916 for more information.

**FOR SALE:** Pruning head for St. Jacques Machine X4 sander with heated body 4X4 wheeler off Hydraulic sander  
Contact Scott 508.942.4511

*Continued on next page:*



**FOR SALE**

**WANTED**

**FOR LEASE**

**HELP WANTED:** Full time employment offered for work on cranberry bogs in Bourne and Falmouth, MA. Employment includes housing and benefits. Contact Brian Handy at 508-958-4586.

**HELP WANTED:** Lassonde Pappas Carver, MA We are currently looking for seasonal full-time help in our cranberry plant: Office Help, Forklift Operator, Lab Help and General Laborer. If interested please call: 508-866-4788

**WANTED:** John Deere 6x4 power dump. Please call 508-295-2319

**WANTED:** Dry cranberry harvester. New or used in any condition. Also plans to build a working harvester. Contact: Wojciech Zuber at [zuber.wojciech@gmail.com](mailto:zuber.wojciech@gmail.com) or 1-403-894-0865

**WANTED: Pruner** Walk-behind or ride-on pruner. Attached rake or similar a plus. Please contact Rick Leibe at UMass Cranberry Station. 413-230-1865.

**WANTED:** Diesel Ford or Massey Ferguson tractor 30-40 hp. Contact: call or text Ben at 508-237-9252 or Alan 774-313-6560.

**WANTED:** Up to 100 feet of used Cranbarrier boom to coral pond weeds, I am a local Carver resident from Beaver Dam Road. Contact: Bonnie at 508-333-6708

**WANTED:** looking for a 6 wheeler dump truck or a trash box for a 6 wheeler dump call Call Alan at 774-313-6560 or Ben at 508-237-9252

**WANTED:** Cranberry picking machine or plans /project to build new one. Machines need to be "Furford" type, can be complete or without engine. contact only via email [adamtomczuk4@gmail.com](mailto:adamtomczuk4@gmail.com)

