

BOGSIDE



April 2022

The Official Newsletter of the Cape Cod Cranberry Growers' Association

SAVE THE DATE!!

YOU ARE INVITED!!

Friday, May 13, 2022

SPRING BUSINESS MEETING

CAPE COD CRANBERRY GROWERS' ASSOCIATION

Schedule of Events

3PM

Hors d'oeuvres and Cash Bar

Business Meeting

4PM - 6PM

**Legislative Awards ♦ Grower Awards
News from CCCGA ♦ CI ♦ CMC**

Location

**Southers Marsh Golf Club
30 Southers Marsh Lane, Plymouth**

Cost

\$30 per person

**RSVP to Patti at psilvia@cranberries.org or 508-866-7878 X15 by
Tuesday, May 3, 2022**

CCCGA BOARD OF DIRECTORS

PRESIDENT

STEVE WARD

2ND VICE PRESIDENT

JOHN MASON

1ST VICE PRESIDENT

JEFF KAPELL

SECRETARY/TREASURER

BRENDAN MOQUIN

DIRECTORS

MATT BEATON
SCOTT HANNULA
JIM HAYWARD
JON JAFFE
KEITH MANN

GLENN REID
ROB RUBINI
HILARY SANDLER
MIKE WAINIO

CCCGA STAFF

BRIAN WICK
EXECUTIVE DIRECTOR
BWICK@CRANBERRIES.ORG

DAWN GATES-ALLEN
DIRECTOR OF MEMBER & FINANCIAL SERVICES
DGATESALLEN@CRANBERRIES.ORG

PATTI SILVIA
MEMBERSHIP & OFFICE COORDINATOR
PSILVIA@CRANBERRIES.ORG

BONNIE SOULE
SPECIAL PROJECTS COORDINATOR
BSOULE@CRANBERRIES.ORG

KIMBERLY MIOT
CRANBERRY TOUR & EVENT MANAGER
KMIOT@CRANBERRIES.ORG

ANNE COTE
FROST COORDINATOR

JOHN FERNANDES
GOVERNMENT AFFAIRS DIRECTOR

MISSION STATEMENT:

TO ENHANCE THE MASSACHUSETTS CRANBERRY INDUSTRY THROUGH THE VIABILITY AND SUSTAINABILITY OF THE CCCGA MEMBERSHIP.”

YOUNG APIARIES INC



25+ Years of Providing Pollination Services for Cranberry Growers

Contact Kevin Young	Cell 570-220-2337
Office 570-998-8417	Email key136@gmail.com



WWW.IASSYS.COM
Grow Smarter, Grow Better

Find out what so many growers already know

- The “Gold Standard” for automation and monitoring
- American Made
- The 1st choice for cranberry growers everywhere
- Reduce overhead, energy costs and water usage
- Easy to use
- Introducing the ISM100 Soil Moisture Meter

Call us at 800-549-4551 or email: info@iassys.com to learn about our quantity discounts!

THE BOGSIDE© NEWSLETTER IS A MEMBER ONLY SUBSCRIPTION AND IS NOT TO BE REDISTRIBUTED WITHOUT PERMISSION.

BLOGS AND BLURBS CONTINUED ON NEXT PAGE:

The Massachusetts Department of Agricultural resources (MDAR) is accepting applications from Massachusetts farmers who wish to participate in one of these Department programs that help with farm viability in Fiscal Year 2023. The Request for Response containing program details and the application form is posted through a link on each program website below. If you would like an application mailed to you, contact the program coordinator listed. **The due date for all these three applications is Tuesday, April 26, 2022.**

Farm Viability Enhancement Program (FVEP) – for established farms. This program provides business planning and technical assistance to develop or update a business plan for established commercial farms that own and operate unrestricted farmland. In return for a short-term covenant to keep the land in agricultural use, operators may be eligible for grants to implement capital projects on the farm that have been identified in the business plan completed through the program. Grant levels range from \$75,000 to \$150,000, depending on the size of the farm and acreage protected, in return for a 10 or 15-year term covenant. Uses of funds will vary depending on the needs of the farm – examples include new or improved livestock barns or farm stores; purchasing delivery vehicles, tractors or haying equipment; constructing food processing or storage facilities.

For more information and a FVEP application, go to: [Farm Viability Enhancement Program \(FVEP\) | Mass.gov](#) or contact Melissa Adams at Melissa.L.Adams@mass.gov or 413-726-2001

Matching Enterprise Grants for Agriculture (MEGA) – for beginning farmers, who have been in business at least one (1) but no more than six (6) years who aspire to develop their farms into commercially viable operations. The program provides business planning and technical assistance, and grant funds of up to \$10,000 on a one-to-one matching cash reimbursement basis. Funds may be used for equipment, infrastructure, or other capital improvements identified through the business planning process that will have a positive impact on the participating farm's viability. Common uses of MEGA grant funds include greenhouses, barn renovations, tractor implements, chicken coops, farmstands, and refrigerated delivery trucks.

For more information and a MEGA application, go to: [Matching Enterprise Grants for Agriculture \(MEGA\) | Mass.gov](#) or contact Jess Camp at Jessica.Camp@mass.gov or 617-823-0871.

The Marcus Urann Scholarship is now accepting applications. The scholarship was established to provide financial assistance for education beyond the secondary level to the children of cranberry growers operating cranberry bogs and adjacent acreage in Massachusetts and to the children of their employees residing in Massachusetts, when a financial need for such assistance can be demonstrated. Bank of America, N.A., serves as Trustee. Award winners will need to reapply each year to qualify. If you would like to view the application, please [click here](#).

CCCGA DUES - REMINDER

Just a reminder for our members that May 1st is the deadline to pay your 2022 dues. We are happy to provide a payment plan to meet your needs. Please contact Dawn or Patti at 508-866-7878 for more information.

If you have not sent in your payment for the year this could be the last copy of the newsletter you will receive. Please support your association and work that we do for the Massachusetts cranberry industry.

BLOGS AND BLURBS CONTINUED ON NEXT PAGE:

Tariff Agreement Reached in United Kingdom

As you are aware, the United States cranberry exports to the United Kingdom had been hit with retaliatory tariffs for many years, stemming from the Steel and Aluminum tariffs put in place in 2018. We are happy to report that this past March a resolution had been attained. This agreement took many months of work by multiple commodity groups and government agencies. The Cranberry Marketing Committee, Cranberry Institute, CCCGA and other state growers' associations, handlers, our congressional delegation and the Biden administration all worked to help make this a reality. The following statement was jointly crafted to inform the grower community and recognize this significant effort.

"The U.S. cranberry industry welcomes the news of an agreement to remove retaliatory tariffs in the United Kingdom as a result of the settling of the long-standing steel and aluminum dispute. Since 2018, U.S. cranberry concentrate has faced a 25% retaliatory duty in the U.K. as a result of this issue. This duty has limited the U.S. cranberry industry's ability to export to the market. The removal of this tariff will ensure that U.S. cranberry concentrate can enter the market competitively, which will allow sales to expand. The U.S. cranberry industry thanks the Biden Administration for its work in resolving this trade barrier."

Cranberry Institute
American Cranberry Growers Association
Cape Cod Cranberry Growers' Association
Wisconsin State Cranberry Growers Association

NOR'EAST HYDROSEEDING INC



**Custom Screening Available On Site
Contact Marc Wilson at (508) 889-9725 or
nehydroseeding@hotmail.com**

BLOGS AND BLURBS CONTINUED FROM PREVIOUS PAGE

MDAR is now accepting applications from agricultural operations who wish to participate in the Department's Climate Smart Agricultural Program which includes the Agricultural Energy Grant Program. Grants are available to help agricultural operations make farm improvements that enhance their economic viability, help prevent negative impacts to environmental resource, adapt and mitigate climate change, improve energy efficiency, and adopt renewable energy technologies. If interested in applying, applications must be submitted with any supporting documentation by the program's deadline.

Climate Smart Agriculture Program

The [Climate Smart Agriculture Program](#) (CSAP) links MDAR's water, energy and climate grants together into one application. This includes the Agricultural Climate Resiliency & Efficiencies (ACRE) Program, the Agricultural Environmental Enhancement Program (AEEP), and the Agricultural Energy Grant Program (ENER). This program continues the goals of the three individual grants by implementing projects that help the agricultural sector adapt to climate change, mitigate climate change, reducing or preventing impacts to natural resources that may result from agricultural practices, and that improve energy efficiency and facilitate adoption of alternative clean energy technologies

The CSAP grant is broken into two sections. Section I: Environment is for environmental projects such as soil health, water use efficiency, or other projects working towards reducing or limiting greenhouse gas emissions. Section II: Energy is Ag-Energy projects to improve energy efficiency or to facilitate clean energy adoption.

Applicants can apply to either or both sections.

Participants selected for funding under either section are provided with reimbursement grants for 80% of total project costs up to \$50,000.

[COMMBUYS - Bid Solicitation](#) - Applications due: 4:00PM on Friday, June 10, 2022

For more information contact:

Section I: Environment - Laura Maul, 617-626-1739, Laura.Maul@mass.gov

Section II: Energy - Gerry Palano, 617-626-1706, Gerald.Palano@mass.gov

MDAR's MA Farm Energy Program (MFEP) - Energy Audits - Technical Assistance – Be Prepared For the Upcoming Grant Programs

Remember, MDAR's [Farm Energy Program](#) has funds to help farms cover audits, energy efficient projects, and select renewable energy projects. We are still providing these services remotely.

IMPORTANT NOTE: Now is the time to have a technical assessment completed for any energy project you are considering in preparation for upcoming energy grants! You will need a technical assessment to file an energy grant application whether with MDAR or USDA. Start planning now. If you wait too long you may not be able to have one scheduled in time! Remember our MFEP pays 75% of the technical assessment, first come, first served. Our MFEP is providing tele-assessments during this trying time.

Contact MFEP now for more information through the Center for EcoTechnology (CET), our partner carrying out the MFEP: 413-727-3090, info@massfarmenergy.com, or visit www.massfarmenergy.com, submit a *Request Form*, and then you will be contacted.



Specializing in Helping Cranberry Growers

Since 2010

How We Help

- Financial planning* to keep bogs in the family
- Transferring the farm to the next generation
- Minimizing taxes** now and upon death
- Investment & insurance audits on current accounts
- Retirement planning on your terms
- Holistic financial guidance tailored to you



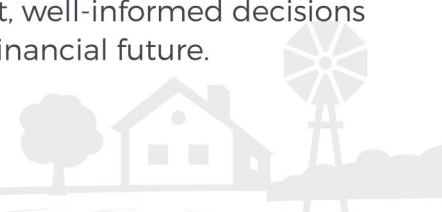
JARAD MINSKY, CFP®
*Founder & Financial Advisor**

O: 781.384.6178

Jarad@MinskyFinancial.com

Why Us?

We have a long history of experience in helping cranberry growers like you to live life well, regardless of the stage of life or business you're in right now. We're dedicated to making things simple for you and being the expert in your corner so you can stop worrying about where you're headed. We serve as a trusted resource to help you make confident, well-informed decisions for your financial future.



*Jarad Minsky is a Registered Representative offering securities through NYLIFE Securities LLC, Member FINRA/SIPC, a Licensed Insurance Agency. 201 Jones Road, 5th Floor, Waltham, MA 02451; 781-647-4100. *Financial Advisor offering investment advisory & financial planning services through Eagle Strategies LLC, a Registered Investment Adviser. Minsky Financial Group LLC is not owned or operated by NYLIFE Securities LLC or its affiliates. **Neither Minsky Financial Group, nor NYLIFE Securities or its representatives or affiliates offer tax, legal or accounting advice. Please consult your own tax, legal or accounting professionals before making any decisions. Eagle Strategies LLC and NYLIFE Securities LLC are New York Life Companies.*

CHANGING ON THE FLY

BY: BRIAN WICK, EXECUTIVE DIRECTOR



This past month has been busy for growers getting ready for the growing season. It too has been a busy time for CCCGA as well. Below is a synopsis of some of the activities that we have been working on and some industry news to share. These are in no particular order. If anyone has any questions, please reach out to me to discuss.

- We are partnering with Plimoth Pautuxet Museum to hold a 2-day cranberry festival at their museum grounds to celebrate MA cranberries on November 11 & 12. There will be children's activities, music, food/drink, a recipe contest, presentations on cranberries, and more. We will be helping the museum to identify sponsors for this program. Plimoth Pautext is taking the lead on much of the organizing but we are actively engaged in this new partnership with them. Our media consultant, Michelle McGrath is assisting CCCGA in helping to design the program and for marketing the event. If this goes well, we may look to make it an annual event.
- The Woodwell Climate Research Center (Woods Hole) is taking the lead on applying for a USDA Climate Smart grant application to study carbon sequestration in cranberries and the surrounding land. The UMass Cranberry Station and USDA/ARS, along with Woodwell will be conducting the research program. CCCGA is partnering on the proposal to be the linkage between the research and the grower community. If successful, this will be a multi-million, 5-year grant project that will look to quantify carbon in cranberries and develop opportunities for marketing and payment programs.
- We are working with Casey Kennedy and David Millar of USDA/ARS on a multi-year grant to evaluate drone technology in cranberries. This is focused solely on large-capacity drones that have the capability to apply fertilizers. This grant has had its share of challenges getting setup and Bonnie has shepherd us through the gauntlet of paperwork.
- Attorney General Maura Healey struck down the Wareham solar by-law in its entirety that was passed last spring. This by-law attempted to put a moratorium on new projects, required a 10-acre maximum in size and a prohibition on tree clearing. The town is voting on another by-law at this spring's town meeting, so we'll see where that will land.
- The town of Carver just passed a solar moratorium at their town meeting, resulting in a 12-month moratorium on new solar or battery storage projects. Worded quite differently from Wareham's attempt, we'll see if their proposal will pass the AG's office.
- We have word that the bog renovation tax credit regulations should be released in about a month. We'll make sure everyone knows when they are ready to be implemented.
- We are working with the state to determine when some of the ARPA funds will be released for bog renovation and capital improvement grant projects.
- There has been a rash of regulatory challenges popping up in our communities. Most of these are baseless from a regulatory perspective and demonstrate a lack of understanding of our state's wetland regulations and/or process. There is a portion of the populous who don't appreciate or understand agriculture and its importance to our region, environmentally and economically. CCCGA is actively involved in these situations, helping to ensure that cranberry agriculture is fairly represented and understood.
- We are working to identify a location for our future bog tours and develop an education center, museum and store to go along with this project.

Continued on next page:

Continued from previous page:

- We have completed our interviews for the bog tour manager position, the person that will be overseeing our tour program and planning other events. Kim Miot was our top candidate and is starting this week. We interviewed 10 candidates on Zoom and then brought 6 in for in-person interviews. The review team was Jim Hayward, Jon Jaffe, Glenn Reid and our office staff of Bonnie, Dawn, Patti and myself.
- We are working on planning the CCCGA spring business meeting to be held on Friday May 13 from 3:00-6:00 PM at Southers Marsh Golf Club. We will have a cocktail hour followed by presentations and awards. This is designed to be an opportunity for growers to learn more about what CCCGA is doing and to hear updates from CI, CMC and others.
- For those growers making pesticide decisions for more than 80-acres, CCCGA has been assisting many growers in getting renewals of their EPA NPDES Notice of Intent for pesticide applications. EPA has revamped the online process, causing numerous issues. This has taken a tremendous amount of time to get these processed and approved by EPA and Dawn took the lion's share of this workload. She has done a masterful job to get growers in compliance.
- The state has announced a new hiring incentive program called HireNow. \$4,000 is available for businesses that hire full-time employees between March 23 and December 31. CCCGA sent this out previously via email but if anyone is hiring, this is a great opportunity to have some start-up costs covered.
- I participated on an industry Zoom call with Rep. Jim McGovern's staff to discuss pending federal Child Care Act legislation, to help ensure that dried cranberries are included in this program.
- Patti has continued to track memberships, stay on top of member renewals notices and pump out the newsletter.
- CCCGA has a new and streamlined membership software that Bonnie is working to setup. This system when fully implemented will help CCCGA be more efficient and should help members with renewals, signing up for events and more.
- The CCCGA Research Committee and the Cranberry Research Foundation met to review horticultural research proposals. Elsewhere in the newsletter is a synopsis of what is approved for funding.
- I attended the FVAC Technical Subcommittee meeting to review Chapter 61A values for the upcoming tax season. More details can be found elsewhere in this newsletter.
- I met with the new USDA/FSA director for Massachusetts, Dam Smiarowski.
- I virtually attended the recent CMC and CI board meetings.
- Activity continues as the state legislative session wraps up and we have our bills to try and push over the finish line.
- We're working on developing a program for Workforce Development that will help growers attract and attain new talent on the farm. We'll have more to report in the coming weeks.





**Maximize
the fruit of
your labour.**

Our agronomists work closely with our grower partners to improve yields

We offer competitive pricing

Our cranberries are processed in a new state-of-the-art facility

Our grower partners obtain higher yields than the regional average

FRUIT D'OR IS CURRENTLY LOOKING TO
CONTRACT NEW ACRES.

Contact Simon Bonin our Director of Grower Relations and Agronomy:
819-291-0395 - sbonin@fruit-dor.ca

Fruit d'Or

Largest independant Cranberry processor. In business since 1999.

Nutrien

Ag Solutions™

Profit from our Experience

For All Your

**Chemical, Fertilizer,
& Nutritional Needs**

**It's time to get ready for
Spring Herbicide and
Early Season
Fertilizer Applications**

**Mike Utley
Branch Manager**

Jeff Utley

Operations Manager

(508) 866-4429

96 Forest St • N. Carver, MA 02330



CALENDAR OF EVENTS



UMass Cranberry Pesticide Safety (via zoom)
Tuesday, April 26th 7:30 - noon ~ 4 Credits

CCCGA Spring Business Meeting
Friday, May 13th 3 – 6PM
Southers Marsh Golf Club, Plymouth

Annual Cranberry Research Foundation Golf Tournament
Monday, July 18th
Southers Marsh Golf Club

CCCGA Annual Meeting
Wednesday, August 31st
Oiva Hannula & Sons, Inc., Carver

Welding Services

Cole's Mill Equipment Repair

508-789-0618

On site Heavy Truck & Equipment Repair

Andrew Cole - Owner • colesmillrepair@gmail.com

BILL'S TRACTOR REPAIR

Servicing
Diesel and Gasoline
Engines
On Sight Repairs

Bill Alger
317 Elm Street
Kingston, MA 02364
Cell: 617-688-6961



*"Serving Northeast Agriculture
Since 1984"*

Arthur Carroll Insurance Agency
Family Owned and Operated
Offices in Farmington, ME and Thomaston, CT

www.arthurcarrollcrop.com

ME: Office: 855-305-2010 CT Office: 860-283- 6540

**75+ YEARS OF
KNOWLEDGE
& EXPERIENCE**
*handling cranberries from
bogs, to bins, to baskets...*

CHIP MATHEWS
Director of Purchasing
P: (856) 455-1000, 7295
C: (401) 361-1310
chipmathews@lassonde.com

KATHLEEN PATTERSON
Plant Manager
P: (508) 866-4788, 10
kathleen.patterson@lassonde.com

QUALITY PRODUCTS GROWN BY INNOVATIVE THINKERS 

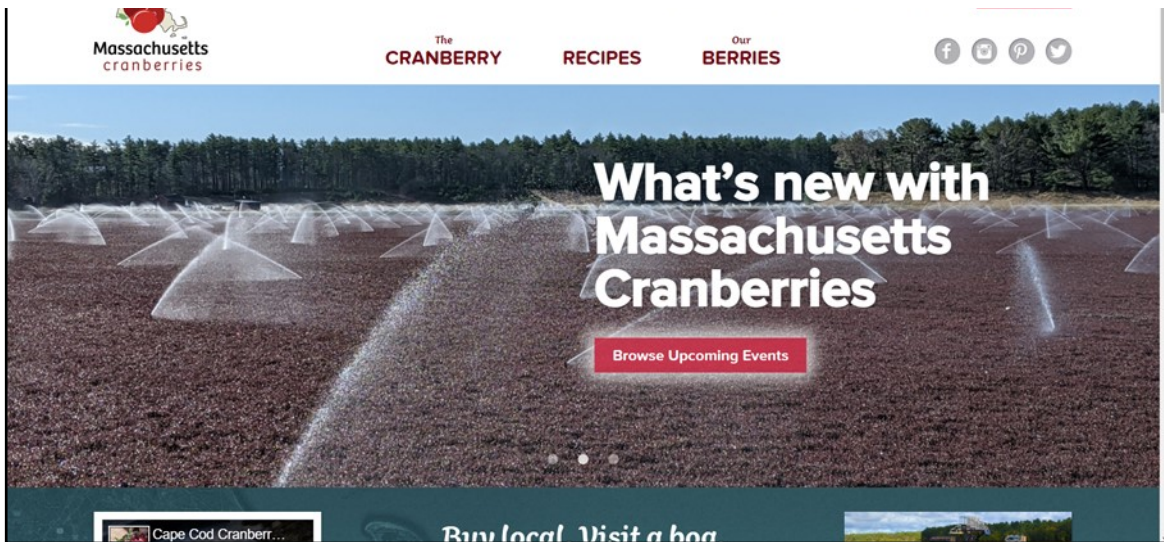
THE GROWER PORTAL

BY: BONNIE SOULE

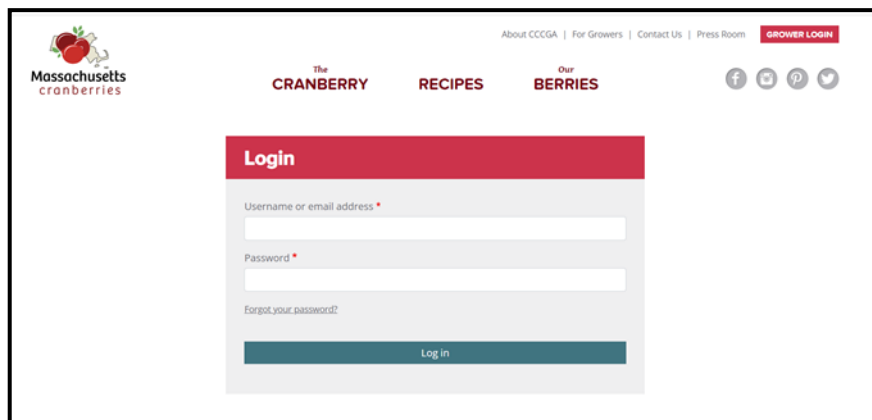


Cranberries.org Grower Portal

The Grower Portal was developed to provide access to grower specific information. All grower members have access to this section of our website using their email on file with the office or username (previously supplied at setup). To login, you simply click on the red GROWER LOGIN button at the top right corner of the website.

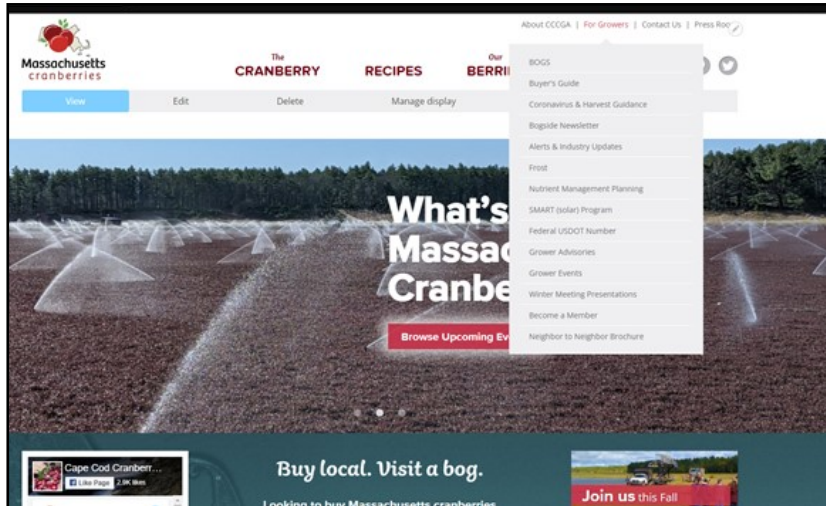


You will then get to the Login screen where you can input your username or email address and password. If you do not know your password, simply click on 'Forgot your password?' and you can reset it.



Once logged in, you have access to all the grower files by hovering over the 'For Growers' menu.

Continued from previous page



From FROST information to GROWER ADVISORIES and WINTER MEETING PRESENTATIONS, there are some great resources for everyone to access. If you feel we should have something there that isn't, please reach out to the office and let us know! Over the next several months we will be updating portions of this portal, so we wanted to remind everyone that it is accessible. If you have any questions, please contact Bonnie at bsoule@cranberries.org.

An advertisement for Merrimack Valley Apiaries, Inc. The ad is framed in red and features a central white box. At the top of the box are three clusters of cranberries and a circular logo of a bee. The text reads: 'Bees are our Business!', 'MERRIMACK VALLEY APIARIES, INC.', '3 Generations of Pollination Service to the Cape Cod Cranberry Growers', and 'Based in Massachusetts, we are ready to meet your pollination needs.' Contact information is provided for Glenn Card, including office and mobile phone numbers, and an email address: glenncard@mvabees.com. The background of the ad shows cranberry plants and flowers.

SOIL SOLUTIONS *for* HIGH PERFORMANCE LANDSCAPES



BOG MAINTENANCE MATERIALS



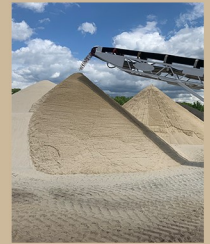
BOULDERS, STONE AND ROCK SUPPLIES



BOG CONSTRUCTION AND RENOVATION MATERIALS



STABILIZED STONEDUST® FOR NATURAL ADA TRAILS



SCREENED AND BANK SAND

CONSTRUCTION MATERIALS • BIORETENTION SOILS • TOPDRESSING SAND
ATHLETIC FIELDS • STABILIZED STONEDUST • PLANTING BED SOILS • GREEN ROOF MEDIA



Experience. Quality. Consistency.



CONTACT US FOR PRODUCT SPECIFICATIONS, TESTING RESULTS, PROJECT ANALYSIS, AND PERSONALIZED QUOTES.

JUSTIN O'CONNOR

JUSTIN@READCUSTOMSOILS.COM

781.828.6300

READCUSTOMSOILS.COM

OCEAN SPRAY, A GROWER-OWNED COOPERATIVE

CONTACT US AT
GROWERRELATIONS@OCEANSPRAY.COM OR CALL
1-800-334-4204



Guarantee a Flying Start to Next Season

Top Reasons to Use Bumblebees

- Bumblebees forage at temperatures as low as 40°F, honeybees forage when temperatures are 55°F and higher.
- Bumblebees do not adjust foraging times to avoid wind, a honeybees foraging is stopped when wind speeds reach 15 mph.
- Bumblebees can use “buzz pollination” or sonication to release pollen from flower anthers, honeybees do not sonicate to collect pollen.
- Bumblebees can deposit larger quantities of pollen to the stigma as compared to honeybees, requiring less visits for pollination.
- Bumblebees tend to have a more erratic flight pattern than honeybees which facilitates the movement of pollen across rows.
- Bumblebees will forage in lower light conditions than honeybees.



Koppert's Quad is especially designed for outdoor pollination with four hives inside; it is buzzing with bumblebees ready to pollinate.



800.928.8827 info@koppertonline.com
www.koppertus.com



KOPPERT
BIOLOGICAL SYSTEMS



Division of Crop and Pest Services
Apiary Inspector



The cranberry bloom is upon us and this means it's pollination time. The MDAR Apiary Program Team would like to remind growers that all honey bee colonies imported for pollination are subject to pest and pathogen inspections by Apiary Inspectors. To assess bee health, a team of Apiary Inspectors will work to visit as many bogs and apiary drops as possible to inspect a subset of hives representative of each specific beekeeper imported shipment. We appreciate your help in alerting the beekeepers that you work with of this requirement. Inspectors are happy to answer questions about the inspection process and will notify you prior to arriving to your property. For more information, please contact us at bees@mass.gov or 508-281-6784.

Move water, clay, topsoil or sand.
 We have the equipment for the job!

- Case and Case IH machines
- Late model, low hour rentals
- Parts for all makes, all models
- Field service when and where you need us

MT MONROE TRACTOR
we keep you working

97 Turnpike Road, Westborough, MA 01581
 508.845.4343 • 866.590.2273
www.monroetractor.com

77 Charlotte Furnace Road
 West Wareham, MA 02576

Peter Beaton: peter@beatonscgs.com
 Rob Rubini: Rob@beatonscgs.com

- Bog Management
- Bog Renovation
- Herbicide / Fertilizer Applications
- Custom Harvesting
- Intergraded Pest Management
- Ditching/ Drainage
- Sanding
- Flume Repair/ Replacement
- Irrigation Installation
- Weeding/Wiping
- Custom Fabrication
- Pruning



P.A. Landers, Inc.

Serving Eastern Massachusetts Since 1978

PREMIUM BOG SAND

HANOVER · PLYMOUTH · FORESTDALE

MEETING THE NEEDS OF GROWERS EVERY SEASON OF THE YEAR

508-660-6404 · 781-826-8818

Monday - Friday 7AM - 5PM · Saturday 7AM - 12PM

BOG CONSTRUCTION · MATERIAL DELIVERY · EQUIPMENT RENTAL

www.cranberryvine.com

Hybrid Vines for Sale

Some of the
highest yielding varieties in the USA

Crimson King, Granite Red, Pilgrim King, Midnight Varieties, BG, Valley King

- No royalties on initial planting.
- All new varieties with unique traits and high yields.
- Breeding hybrid vines since 1974.

Limited vines available. Reserve orders now!



To order or arrange a summer variety tour,
Call Ed Grygleski at 608-387-9444 (Tomah WI)

Check our website for a list of varieties & yield data. Vines are field evaluated and selected for color uniformity, disease resistance and high yield. Valley Corp is a family owned and operated cranberry farm since 1890.

The following horticultural research projects were funded this year by the CCCGA Research Committee and the Cranberry Research Foundation.

UMass Cranberry Station

PLANT NUTRITION: Nitrogen rate, application timing and frequency in cranberry

Peter Jeranyama

Objectives:

1. to refine N rate response curves for second-generation hybrids 'Crimson Queen', 'Mullica Queen', 'Demoranville' and 'Haines' within the 40 to 100 lb/acre range
2. to test timing and frequency of fertilizer application in spring, and summer in the second-generation hybrids. Research in WI has already shown that fall fertilizer applications are not effective
3. to evaluate effects of frequency and timing on fruit yield but also in particular to fruit rot and fruit quality

PLANT PHYSIOLOGY: Towards precision agriculture in cranberry production: exploring the use of unmanned aerial systems (UAS).

Giverson Mupambi

Objectives:

The main objective of the research is to explore various ways in which UAS can aid in cranberry production. The first year is expected to be exploratory in nature, and based on the results, further research will be carried out to develop applications that growers can use.

1. Frost monitoring: The use of thermal imaging will be explored for mapping cold spots on cranberry bogs and improving the placement of temperature sensors used for frost protection. A preliminary study will explore the use of multispectral cameras to monitor bud development in the spring and correlate the data to spring frost tolerance thresholds.
2. Plant Diagnostics/nutrition: Explore multispectral cameras for plant diagnostics by detecting nutritional deficiencies in cranberry bogs. The data produced can be used in future UAS applications for targeted fertilizer applications.
3. Irrigation: Use UAS to map soil moisture content in cranberry bogs to improve irrigation uniformity and detect dry zones with sprinkle malfunction. Map out wet spots that may be prone to diseases like Phytophthora for corrective actions like tile drainage installation.
4. Insect damage: Utilize RGB imaging to map insect damage from Putnam scale and golden casebearer on cranberry bogs. A database will also be developed to understand the movement patterns of these insects over different growing seasons. The use of multispectral imaging to detect insect infestation/damage before visual symptoms will be explored.

Continued from previous page

5. Weeds: Use UAS to map weed infestations. The data produced can be used in future UAS applications for targeted herbicide applications.
6. Disease detection: Use UAS to map disease infestations like Phytophthora and upright die-back. The data produced can be used in future UAS applications for targeted herbicide applications.

WEED MANAGEMENT/IPM

Hilary Sandler

Objectives:

1. Identify and screen unregistered herbicides for crop safety and efficacy.
2. Develop best use patterns for safe and effective unregistered compounds and for currently registered herbicides.

ENTOMOLOGY

Anne Averill

Objectives:

1. Monitor status of outbreak species
2. Monitor insecticide resistance by quantifying weevil at sites with reported poor Actara performance
3. Establish Fanfare (bifenthrin) role in cranberry

PLANT PATHOLOGY

Leela Uppala

Objectives:

1. Evaluation of selected, unregistered, novel fungicides from FRAC groups 7, and pre-mix combinations of 7&12 and 9&12, for their effects on fruit rot and fruit quality.
2. Characterization of the prevalent fruit rot fungal pathogens in Massachusetts.
3. Continue data collection efforts to identify risk factors impacting fruit rot incidence.

Rutgers University

Testing alternative control tactics against cranberry insect pests: Biological control and host-plant resistance

Cesar Rodriguez-Saona

Objectives:

1. Evaluate biological control products based on entomopathogenic fungi against blunt-nosed leafhoppers.
2. Investigate the abundance of insect pests and their natural enemies in five varieties across cranberry farms.
3. Determine the levels of resistance among old and new varieties against multiple insect pests of cranberries.

VISITORS OF THE MONTH

APRIL



Emme Allen loves to spend the day at the CCCGA office. She oversees the office staff, checking to see if we are busy at our computers or having a snack. She especially likes visitors and is happy to greet them as they come in the door. She certainly is welcome to spend the day with us whenever she would like.

FLUMES FOR SALE

CONCRETE & ADS PIPE • INSTALLATION AVAILABLE

JOHNSON CRANBERRIES: 508-277-7035



Web-Based Irrigation Management

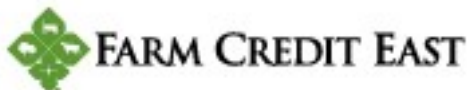


HORTAU
SIMPLIFIED IRRIGATION*

- Manage Crop Stress in Real Time
- Frost Protection and Mobile Alerts
- Remote Start and Automation
- Reduce Energy and Water Use
- Full Service and Support



For more information call (920) 246-9130 or visit hortau.com



Farm Credit East is deeply rooted in our customers' success – and Northeast agriculture. In fact, no one knows ag quite as well as Farm Credit East. So if you're looking for financing or business services for your agricultural operation – of any size or type – look to Farm Credit East. Our mission is to grow your success.

FARMCREDITEAST.COM
508.946.4455

Loans and Leases
Tax Services
Payroll Services
Business Consulting
Record-keeping
Country Home Loans
FarmStart for New Businesses
Real Estate and Equipment Appraisals



The Farmland Valuation Advisory Commission has announced the Chapter 61A values for Fiscal Year 2023. The 5 different yield categories for cranberries did drop based on the 2021 crop but the overall tax did go up slightly, as it's based on a 5-year average. For many growers, if you drop into a lower yield category, your tax rate may actually go down. All towns have been reminded by the Department of Revenue to put growers into the appropriate yield category. Be sure to include your yield information when you submit your Ch. 61A information and watch to ensure that you are properly assigned the right category by your town when your taxes are sent out. In the past, we have seen that a few towns automatically put growers into the highest tax category.



Geoffrey E. Snyder
Commissioner of Revenue

Sean R. Cronin
Senior Deputy Commissioner

FVAC CHAPTER LAND RECOMMENDED VALUE: FISCAL YEAR 2023

Per Acre Range of Values

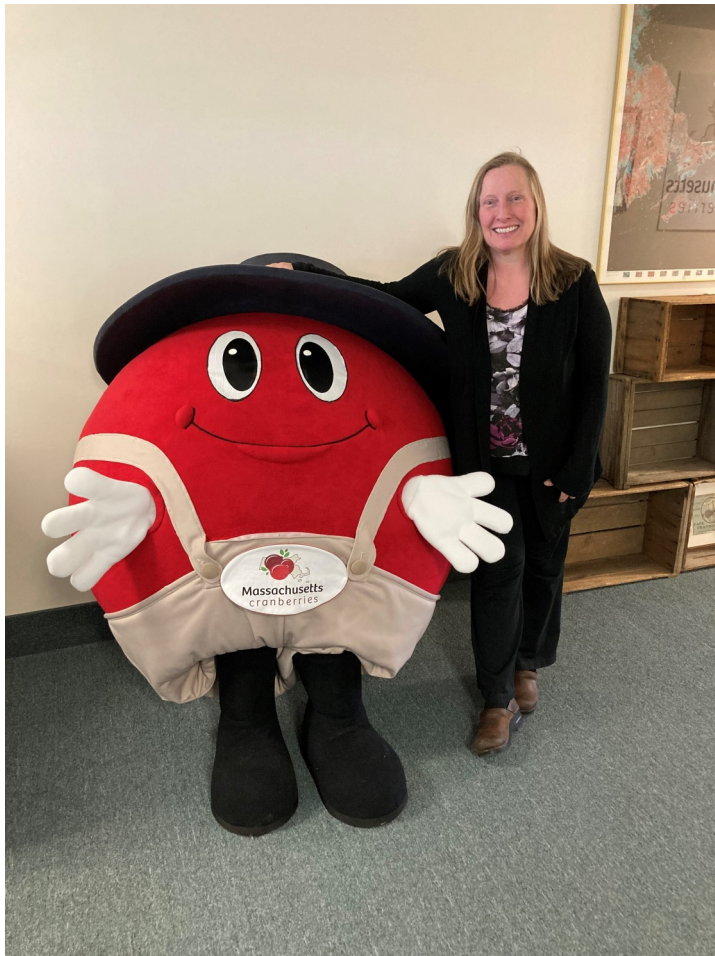
Chapter Land 61 and 61A Use Categories	Productivity Based on Dominate Soil Ratings*			
	Use Code	Below Average	Average	Above Average
Cropland Harvested: Vegetables, Tobacco, Sod and Nursery	711, 712, 719	\$921	\$1,151	\$1,381
Cropland Harvested: Dairy, Beef and Hay; Tillable forage cropland, etc.	713	\$184	\$230	\$276
Cropland Harvested: Orchards, Vineyards, and Blueberries	714	\$921	\$1,151	\$1,381
Christmas Trees	602, 715	\$114	\$114	\$114
Nonproductive Land: Wetland, scrub land, rock land	720	\$57	\$57	\$57
Cropland pastured; Permanent pastured; Necessary and Related land—farm roads, ponds, etc.	716, 718	\$184	\$230	\$276
Productive Woodland; Land Use Categories – Chapter 61 Forest Land or 61A land with a Forest Management Plan West of the Connecticut River	601, 717	\$86	\$108	\$130
Productive Woodland; Land Use Categories – Chapter 61 Forest Land or 61A land with a Forest Management Plan East of the Connecticut River	601, 717	\$96	\$120	\$144

Use Code	Cranberry: Range of Production/ Barrels per Acre				
710	≤87	87≤114	114≤145	145≤169	>169
Cranberry Values	\$967	\$1,289	\$1,611	\$1,933	\$2,255

- **Cropland Harvested** – This land represents the highest use of land in the agricultural enterprise. All land from which a crop was harvested, or hay was cut, in the current year falls into this category. This includes the land in vegetables, sod, nurseries, orchards, vineyards, other perennial plantings, and greenhouses.
- **Dairy, Beef and Hay; Cropland Pastured, Other Cropland & Permanent Pasture** – Cropland used for pasture or grazing, or land considered as tillable but is elected to be fallow or in cover crops. It can and often is used to produce crops, but its maximum income may not be realized in a particular year. This category also includes land planted in crops, which were to be harvested after the census year, and land is typically not tillable, best suited for grazing or possibly part of an erosion control program, plus necessary and related lands.
- **Nonproductive Land** – The land on the farm which is nonproductive primarily due to slope, drainage capacity, soil type or topography.

Supporting a Commonwealth of Communities

mass.gov/DLS
P.O. Box 9569 Boston, MA 02114-9569
(617) 626-2300

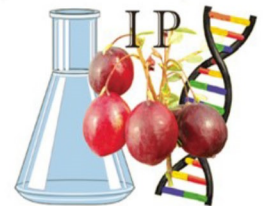


Hello, I am very excited to begin my new role as CCCGA Cranberry Tour & Event Manager. Everyone has been so welcoming and helpful. I am eager to begin this tour season and work to grow the program. I come from a nonprofit community media background and bring developmental and organizational skills. I love working in the community and have developed programs that include promotional work, youth groups, membership, and collaboration across industries. I am excited to work in the cranberry industry and be part of this important agricultural product of Massachusetts. The people of Cape Cod Cranberry Growers Association are filled with hard working folks, and I look forward to getting to know everyone. See you on the bog!

INTEGRITY PROPAGATION

The Cranberry Industry's First and Only Foundation Level Nursery

TAKING ORDERS FOR 2022 & 2023



The source for Rutgers University Certified Varieties:

CRIMSON QUEEN® DEMORANVILLE® MULLICA QUEEN®

SCARLET KNIGHT® the fresh fruit variety, **WELKER™** recommended for the west coast,

HAINES™ Tested in advanced replicated trials in OR, WA and WI, plots exhibit:

- Berries with uniform full color even in deep canopies
- Disease resistance superior to Stevens
- Less fruit rot than Stevens in replicated field plots
- Consistent high yields
- Mid season ripening
- Round berry with high firmness perfect for SDC

and Dr. Vorsa's latest release:

VASANNA™ In OR, WA, WI and BC tested in replicated field trials exhibits:

- Mid-season good color
- Especially high yields in BC peat and WI sandy soils



Vigorous plants with multiple branches

Providing 100% 'DNA Fingerprinted', 'Virus Tested' and 'Phytoplasm Tested' Plant Material

Contact us at 609-923-3143, or email contact@integritypropagation.com

www.integritypropagation.com

WE ARE UNITED

We are proud to announce that Nortrax and Schmidt Equipment are now **United Construction & Forestry** with 14 locations to serve you. We are part of the United Ag & Turf family with over 40 locations strong across the Northeast offering the complete line-up of John Deere machines. We are united with John Deere to provide the best quality products, parts, and service in the industry. Expect the same great people at your service, with a united goal of excellence. **UNITED We Are Strong!**



UNITED Construction & Forestry

MAINE

Herron **866-416-3764**
 Houlton **866-416-3765**
 Ft. Kent **207-834-6701**
 Westbrook **866-416-3763**

MASSACHUSETTS

North Oxford **800-922-8295**
 Billerica **800-531-2266**
 Plymouth **800-916-0997**
 Springfield **800-734-5594**
 Swansea **800-456-6885**

NEW HAMPSHIRE

Pembroke **800-852-3338**

NEW YORK

Clifton Park **800-333-0620**
 Gouverneur **315-287-0703**

VERMONT

Springfield **800-639-3071**
 Williston **800-422-4955**

www.UnitedCF.com

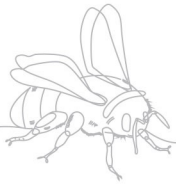




Maximize your pollination with 4-Pak™



- ✓ better fruit size
- ✓ uniform fruit weight and size
- ✓ reduce your pollination deficit



Why use 4-Pak™?

- Biobest Bumblebees work through inclement weather; wind, rain and cloud cover
- 4-Pak™ works as a complement to current pollination strategies
- Bumblebees focus on the targeted crop
- Bumblebees can pollinate cranberry flowers in a single visit due to buzz pollination



Toll free 1 (855) 224 6237
customerservice.na@biobestgroup.com



I-20 12" POP-UP ROTOR

Efficient, reliable, and easy to permanently install, Hunter's rugged 12" I-20 provides the even irrigation coverage cranberry bogs need to thrive.

Since it's built on Hunter's legendary gear drive technology, you can rest easy knowing your bog is covered by the best of the best.



RESIDENTIAL & COMMERCIAL IRRIGATION | Built on Innovation®
Visit. hunterindustries.com/i20

Hunter®



HARVESTING THE PAST....

A HISTORICAL LOOK AT THE CRANBERRY INDUSTRY

BY: BONNIE SOULE

This month the Edaville Railroad celebrates its 75th anniversary! I originally wrote about Edaville in my very first Harvesting the Past article, but I just came across another Cranberries magazine layout on the railway and Ellis D. Atwood and the timing seemed appropriate to mention it again.

The September 1938 edition of Cranberries featured an article on Mr. Atwood who, at the time, was one of the largest individual cranberry growers in the industry. Ellis D. Atwood followed in his father's and grandfather's cranberry-growing footsteps. His grandfather began growing cranberries way back in the 1880s and the Atwood holdings were built up to over 200 acres. He served on many industry boards and was very involved in Carver town affairs. He showed "what modern thought, progressiveness and effort can accomplish in cranberry culture, even though from small beginnings."

This modern thinking included the establishment of the Edaville railway—the Cranberry Belt Rail Road. Plans for the narrow-gauge railway were made prior to WWII when he purchased the equipment but were then delayed until 1945. Once he got the green light to move ahead, he hired Mr. Linwood Moody, a railroad man from Maine, to advise on building the narrow-gauge track. He then got the bulldozing underway to clear approximately six miles around the cranberry bog. It took a couple of years to complete the project but when it was finished, the railroad also served as historical preservation of the 2 ft. gauge cars R.R. Atwood and Moody had gathered 15 flatcars, 4 box cars, one tank car, two cabooses, one baggage car, two coaches plus the "Rangeley" parlor car (this was the 'prize of prizes' according to the article) and Steam Locomotive No. 7. Quite the collection!



Continued from previous page

Used for many years in active cranberry farming, the Edaville Railroad also became famous for tourists to ride and view Christmas lights—I know my family ALWAYS went to Edaville at Christmas for this reason! For decades, Edaville has had visitors old and young come ride the rails and view the cranberry bogs throughout to the year. What a treasure it has been for this region!

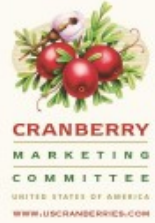
I hope you've enjoyed reading about the 75 year old Edaville once again. I'll be back next month harvesting more of the cranberry industry from days gone by!

All images and archival text printed with permission from "Cranberries/Fruit Growers News"



UPDATES FROM THE CMC

BY: KAREN CAHILL



This is an election year for the Cranberry Marketing Committee's membership: 7 voting and 5 alternate members representing major cooperative growers; and 6 voting and 4 alternate members representing independents. Nomination forms have been mailed to all independent growers and must be returned (postmarked) by April 30, 2022 to be counted. If you are an independent grower and did not receive a nomination form, please contact the CMC at 508-291-1510 or kcahill@uscranberries.com. Voting ballots will follow in May.

The major cooperative will work with its members directly to fill any vacancies. All appointees will be submitted to the USDA Secretary for approval in June. New board members will serve a term that runs from August 1, 2022 to July 31, 2024.

It is USDA's policy that membership on industry-governed boards and committees accurately reflects the diversity of individuals served by the programs by including eligible women, minorities, and people with disabilities. Definition of Minority: Black Americans; Hispanic Americans; Native Americans (American Indians or Eskimos); and Asian Pacific Americans. USDA has declared that multiple family members cannot serve as voting members on the same board, however a special circumstance may be submitted to USDA for further consideration if the need arises.

*Family Farmed
Since 1934*

- Competitive returns
- Commitment to Massachusetts
- Agronomic programs

*For more information
please contact*

James Ross
Grower Relations & Agronomy Manager
(774) 435-0184
jross@decascranberry.com
decascranberry.com

Part of the Fruit dOr Group

VISIT US AT
81 CHARLOTTE FURNACE RD.
WEST WAREHAM, MA

**COMPETITIVELY SUPPLYING
ALL OF YOUR GROWING NEEDS**

Fertilizers & Chemicals • Irrigation Supplies
Pest Management • Safety Equipment • and more

WWW.PROGRESSIVEGROWER.COM
508-273-7358



At MTE, service is our priority.

Call or visit us online today!

1-888-708-5296

www.mteequipmentsolutions.com

sales@mte.us.com

IT MAY BE COMPACT,
BUT ITS REACH IS WORLDWIDE.



Step into a Kubota excavator and it's easy to see why it earned the title of #1 selling compact excavator in the world*. Six heating and cooling vents and an easy-open front window provide the kind of comfort that keeps operators in the cab and getting the work done. Minimum tail swing, industry-leading bucket breakout force and an optional quick coupler are just some of the additional features that give the Kubota compact excavator such a huge reputation.

SALES • SERVICE • PARTS • RENTALS



Your #1 source for Kubota products since 1979.

**45 North Main Street, Carver, MA
508-384-0011 • www.norfolkpower.com**

   KubotaUSA.com

*According to 2016 OEM Off-Highway Research, Kubota has the largest compact excavator market share in the world. ©Kubota Tractor Corporation, 2019.



FOR SALE

WANTED

FOR LEASE

FOR SALE: 305 Chevy with Berkeley Pump , propane , 10 ac \$5500. - Kubota 3650 dual wheel tractor external hydraulic, 3 pt \$10000. - Used aluminum flumes 36,24,15 inch good shape , \$BO - 3pt hitch drainage tile puller like new , \$ 4200. - 8&10 inch PVC mainline pipe - Berkeley 12 in flow pump B10GRMBM , \$2500.
Call 508-866-1149 or 508-269-3693

FOR SALE: Home and bogs. 3500 sq ft home with garage. Two barns of approx 3,000 sq ft. 12.5 acres of bog, mostly hybrids. Over 18 acres total. Two pumps with automation. Located in South Middleborough.
Call 508-333-0355

FOR SALE: 13.38 acres of Ben Lears & Early Blacks. The property consists of a 10 acre reservoir & 45 acres of upland a section of upland has 3 possible house lots with right-a-ways. Two irrigation pumps & a lift pump to retrieve water for reservoir. A 54X16X60 insulated & heated Morton Building. Property located in Carver. Call 508-866-4916.

FOR SALE: Cranberry Water Harvester, in excellent condition, can be seen locally, asking \$3,800 or B. O. Call 508-802-1067 and ask for Doug.

FOR SALE: Beautiful, secluded 100 acre property in Carver, MA. 35 acres of ocean spray dry picked cranberries, 4 acres of Christmas trees, cranberry museum and gift shop that caters to Argo tourists. Please call 339-933-0207 for more information or to make an offer!

BOG FOR LEASE: Ocean Spray Cranberry A-pool bog for lease, will negotiate 8 acres. 4.5 acres of Early Black, 2 irrigation pumps, 1 lift pump 4 1/2 acres of pop-up, 3 1/2 acres of traditional sprinklers Spring fed reservoir. Bog located in West Wareham. Please call 508-748-1137

FOR SALE: Three "vintage" Wisconsin engines. York Rake, 8' 4", good condition, with a grading blade (Scarfer), York Rake RW Serial #2323 Eight (8) foot water reel, side arm picker, reel in front. "Vintage" cranberry boxes, excellent condition, stored inside, \$15.00 each. Call 508-746-0916 for more information.

FOR SALE: One Kubota four cylinder motor with clutch and Berkley pump. Runs fine. \$5000. Two four wheel drive bog sanders with Wisconsin motors and International drive trains - \$4000. or best offer. Over 100 Rainbird #30 H sprinklers or risers 12" -14" \$10. each. Four Wisconsin motors for use or parts - make an offer. Please call John at 508-509-3584 with any questions.

FOR SALE: Pruning head for St. Jacques Machine X4 sander with heated body
4X4 wheeler off Hydraulic sander
Contact Scott 508.942.4511

FOR SALE: New-Unused Furford Cranberry Picker and Pruner Selling at Cost Harvester - \$13,900. Shipping From Washington state - \$685. 20 Burlap bags - \$77. Expenses - \$38. Total Cost \$14,700. Call John 207-985-1288

The logo for Refresco features a green curved line above the word "Refresco" in a bold, orange, sans-serif font. The logo is set against a white background within a green-bordered box.

Grower Contact: Jonathan Ashley
Senior Manager Grower Relations
jonathan.ashley@refresco.com

Continued on next page:

FOR SALE

WANTED

FOR LEASE

WANTED: John Deere 6x4 power dump.
Please call 508-295-2319

WANTED: looking for a 6 wheeler dump truck or a trash box for a 6 wheeler dump call Call Alan at 774-313-6560 or Ben at 508-237-9252

WANTED: Dry cranberry harvester. New or used in any condition. Also plans to build a working harvester. Contact: Wojciech Zuber at zuber.wojciech@gmail.com or 1-403-894-0865

WANTED: Cranberry picking machine or plans /project to build new one. Machines need to be "Furford" type, can be complete or without engine. contact only via email adamtomczuk4@gmail.com

WANTED: Diesel Ford or Massey Ferguson tractor 30-40 hp. Contact: call or text Ben at 508-237-9252 or Alan 774-313-6560.

WANTED: Pruner Walk-behind or ride-on pruner. Attached rake or similar a plus. Please contact Rick Leibe at UMass Cranberry Station. 413-230-1865.

WANTED: Up to 100 feet of used Cranbarrier boom to coral pond weeds, I am a local Carver resident from Beaver Dam Road. Contact: Bonnie at 508-333-6708

**PLACE YOUR
CLASSIFIED AD
HERE!!**

LARCHMONT
IRRIGATION • DRAINAGE
PUMPS • LANDSCAPE LIGHTING

Lexington, MA Manchester, NH
781-862-2550 603-622-8825

SINCE 1949
SERVING THE GREEN INDUSTRY

- Irrigation Supplies
- Pump Stations & Supplies
- Drainage & More

Quality products from the leading manufacturers with unbeatable customer service and always the right price.

The exclusive Distributor of the original Cranberry Special

www.larchmont-eng.com

Mariani[®]

PREMIUM CRANBERRIES

Andy Reitz
areitz@mariani.com

Director of Grower Relations

P 715.423.5200 C 715.459.3535



Considering a change?
Exploring options?

Give us a call first
for more information
about our program.