



Reaching New Heights, Together



**METAL BUILDING
CONTRACTORS & ERECTORS
ASSOCIATION**

Quick Links

[Board of Directors](#)

[Member Directory](#)

[Members Only](#)

[Products & Services](#)

[MBCEA Conference](#)

We want to hear from you!

Let us know what is important to you; what kinds of things you are interested in; what you need.

[Sasha Demyan](#), Executive Director

[Jen Heimbürger](#), President

[Jackie Meiluta](#), Program Manager

[Britain Graver](#), Administrative Assistant

WELCOME NEW MEMBERS

Bay Insulation Northwest

Matthew Lorona
Sumner, WA 98390-9620
(360)608-1584

mlorona@bayinsulation.com

Bay Insulation NY/New England

Howard Thomas
hthomas@bayinsulation.com

Bobo Construction, Inc.

Travis Nicholas
9722 Kent Street
Elk Grove, CA 95624
(916)383-7777

tnicholas@boboconstructioninc.com

Greetings!

Last month I wrote about bad apples and the work we are doing to promote the professionalism of our members and our industry. I must have struck a nerve because I received lots of positive feedback. This month I would like to highlight some changes to the AC478 quality initiative that we recently proposed to IAS.



But first some background. When we first crafted the accreditation program our goal was simple. We wanted our quality driven members to be able to differentiate ourselves from the bad actors who low bid our jobs, aka the bad apples! We were wholly focused on things like safety, training and quality. Like any continuous improvement initiative, the program has evolved a bit over the last eight years but the focus on safety and training remained steady. Now that the program is gaining traction and becoming more widely accepted and embraced, we felt there were a few clauses that could be tightened / clarified. An accredited company with a poor safety record or unsatisfied customers reflects poorly both on AC478 and IAS. We recently proposed changes that we felt would improve the program and ensure applicants were at the level always envisioned for an Accredited Assembler.

Proposed changes:

1. A clause was added requiring a three year look back safety report to include the three year average EMR. Assemblers with numbers greater than 1 will be disqualified until such time that their 3 year average improves. We understand and debated extensively the pros and cons of a hard and fast number but ultimately decided for the program to have teeth it needed at least one benchmark, one area that was black and white.

2. The program has always required the accredited company to perform an annual management review. Documents to be considered at that review include customer complaints, back charges, OSHA violations, etc. But the integrity of this report was somewhat of an honor system. We asked IAS to randomly sample the prior year completed project list to ensure effective resolution and general agreement to your report. Since only one job site is assessed, we thought that was a little extra step to keep everyone honest.

www.boboconstructioninc.com

E S Walker Construction Inc

Sheldon Walker
121 Old Henrietta Road
Forest City, NC 28043-8751
(828)429-1063

sheldon@eswalkerconstruction.com

www.eswalkerconstruction.com

Innovative Clean Energy LLC

Brandon Deno
1550 Bay Street, Suite C132
San Francisco, CA 94123
(415)516-1152

brandon.deno@innovativecleanenergy.net

www.linkedin.com/company/35577294

RBD Construction

Matt Johnson
15306 South Alexander Road
Alexander, AR 72002
(501)904-5555

mjohnson@rbdconstruction.com

www.rbdconstruction.com

Romeo Guest Associates, LLC

Wes Foushee
1715 Camden Avenue
Durham, NC 27704
(919)422-7557

wfoushee@romeoquest.com

www.romeoquest.com

Vesta Industrial Contractors, Inc.

Keith Carter
3755 Corporate Woods Drive
Vestavia Hills, AL 35242
(618)267-5429

kcarter@vestaic.com

www.vestaic.com

3. Currently IAS verify that at least 25% of the workers at the job site assessment meet the definition of a journeyworker. The criteria has lots of information and details on the training requirements but does not actually specify this. So we tightened clause 4.29.3.1 to say "Develop, implement and maintain a documented training program that ensures at least 25% of all field workers meet the definition of a Journeyworker, Metal Building Assembly."

The IAS process to amend the criteria is quite rigorous. Changes are reviewed internally at IAS and then published for public comment. Finally the merits of the change are debated at an annual public meeting. Committee Chair, Dan Halme and Program Manager Jackie Meiluta defended our changes and all were ultimately approved.

If you have any questions about this program or want to better understand the criteria, contact [Jackie](#) or attend the upcoming [roundtable](#) on 11/16.

Hopefully we are done talking about apples. I would much rather focus on all the great progress we are making. If you have an idea to improve our association or would like to get involved please reach out. We always want to hear from you.

Regards,

Jen Heimburger
President, MBCEA
President, Heimburger Construction, Inc.



GET SEALED AND SUPPORTED WITH THE ONLY ROOF CURB SYSTEM.

RCS

800-683-5848 | SALES@ROOFCURB.COM | ROOFCURB.COM



OUR CUSTOMERS HAVE THE LAST WORD

WWW.VULCANSTEEL.COM (800) 258-3369 SALES@VULCANSTEEL.COM

VULCAN
STEEL STRUCTURES, INC.

"Most of the projects that we erect are not your typical pre-engineered metal buildings, but are much more complex. They especially do a great job on complex projects. We really like erecting their buildings."

Justin Sayer and James Cippo
Ironrock Commercial Construction, LLC
MBCEA Member, Sanford, FL

MBCEA Announces a New Mobile App!

The latest benefit of membership can be found in our MBCEA app which will allow for year-round member engagement at your fingertips. The News Feed will contain important information about upcoming events, member benefits, and announcements. The forums are where you will be able to

post an issue or question that you're facing, share best practices, and ask for resources. Direct message other app users. Register for events and save to your phone calendar. Advertising throughout the app will be made available via banners to our Industry Members. We'll also be using this as our event app. Download and engage! Note, this is linked to your MBCEA account so make sure you have one and know your password, or update it before downloading!

- [iOS Download Link](#)
- [Android Download Link](#)

Our **New Member Roundtables have been receiving great feedback!** "I was on the call yesterday – very informative and worth the time!", says Chris Hertzog, President of A.C.E. Building Service. The [next one](#) isn't until January, but you may benefit from watching [October's session](#) on our YouTube Channel. Hint, it shows you how to create an account on our website!

Bay Insulation Systems Experience • Quality • Service
Member of the Bay Family of Companies

VISIT US AT
OCTOBER 18-20, 2023
METALCON
LAS VEGAS CONVENTION CENTER
BOOTH #3057

www.BayInsulation.com

Logos for Skyliner and Bay Runner are also present.

METALWALK
ROOFTOP WALKWAY & SAFETY HANDRAIL
CSI DIVISION OF 7346

ROOFTOP WALKWAY & SAFETY HANDRAIL

Design Components Inc.
www.designcomponents.com | 800-868-9910

PROVE YOUR QUALITY WITH ACCREDITATION

Rallying around AC478 is the best way to elevate the professionalism of the metal building construction industry. AC478 is a quality assurance accreditation program for metal building assembly which is used to verify the competence of contractors and building erection companies. It is the only means to truly differentiate yourself from the competition.



MBCEA members get free consultative support and a mentor to help them through the program PLUS tons of free templates, tools, and documents related to AC478 in the Members Only Area– well worth the price of membership!!

Attend the November Roundtable to get all your questions answered and hear from those who recently gone through the process.

Thursday November 16 at 2PM - [Register Now](#)

Have questions? Contact [Jackie Meiluta](#) Check out the [AC478 section](#) of the [Members Only area](#) of the MBCEA website . Hear from your peers on the [MBCEA YouTube channel](#).

RMG Erectors & Constructors, LLC

Established in 2000, RMG Erectors & Constructors is the single largest Pre-Engineered Metal Building Erection firm. With multiple office locations throughout the country – Missoula MT, Sewell NJ and coming soon Nashville TN - to provide significant advantage to your project needs. RMG's experience is multi-disciplined, working in Retail, Commercial, Industrial, Sport Complexes, Railroad, Oil & Pipeline, Health Care, Big Box, and more.

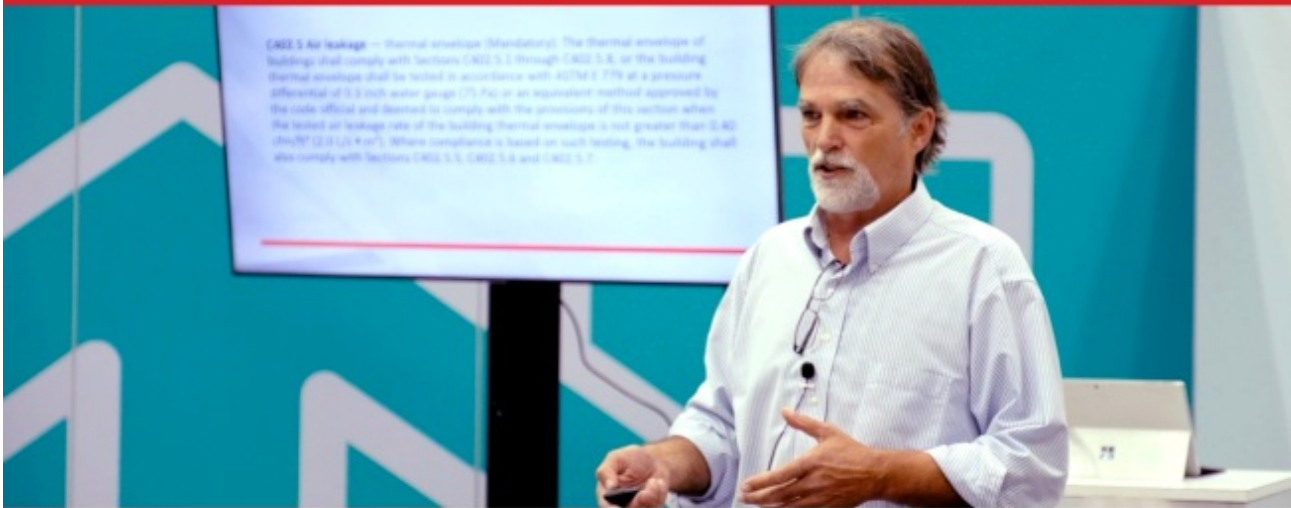
With over 100 full time erectors, RMG prides themselves on their safety policies and

procedures. Every employee of RMG is Certified and Qualified in OSHA 30, NY SST, eRailSafe, Competent Person, Fall Protection, Forklift, Aerial Work Platform, PPE, Qualified Riggers, Qualified Signalmen, CCS (Coalition for Construction Safety), and substance abuse. Pursuing Accreditation through IAS was an obvious choice for CEO, Robert Mesmer. He said, "Adding this accreditation is just another arrow in our quiver for success. This separates us from so much of our competition by ensuring to the industry that we comply and agree to be held to a higher standard."

To learn more about AC478, contact [Jackie Meiluta](mailto:Jackie.Meiluta@mbcea.org) or visit <https://www.mbcea.org/ac478>



COMcheck™:
A Live Demo with Bill "The Code Man" Beals
Join Us for the Energy Codes Event of the Year
Thursday, October 26 at 2:15 ET



Feel Confident Navigating COMcheck and Producing an Accurate Compliance Report

Many states require a COMcheck report for new construction, additions, and alterations before a building permit is even issued. The building envelope and all fenestrations must be constructed exactly as specified in the COMcheck report, as there may be a final inspection after the building is complete. If there are discrepancies between the report and what has been installed, contractors may be required to fully redo the install. Thus, it is crucial for contractors, architects, and anyone involved in the design of metal buildings to feel confident navigating COMcheck and producing an accurate report.

In this free webinar, Bill Beals will give a step-by-step demonstration of the following:

- Review the current commercial energy code landscape
- Illustrate how to generate an accurate COMcheck compliance report, with specific emphasis on the building envelope
- Deconstruct important COMcheck terminology
- Review key pain points faced by builders and architects

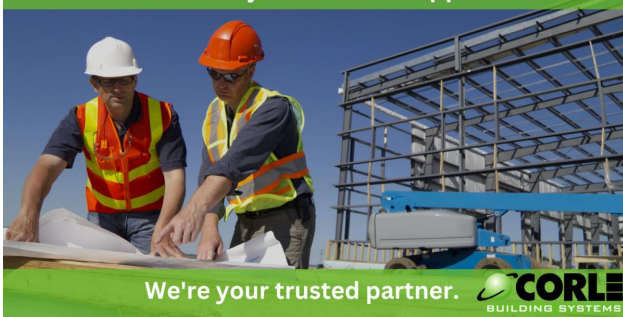
Scan the QR Code or visit therm-all.com to register.

Can't make it live? Register for the webinar and we'll send you a link to watch the demo later.

Credit: 1.0 AIA LU HSW



We're not just another supplier.....



We're your trusted partner. **CORLE**
BUILDING SYSTEMS

PEMB LABOR



(772)-285-9955

Your Financial Health: Just as Crucial as Your Physical Health

Shannon Fowler - Ironbridge W.C.

Ever think of your yearly doctor's check-up? You go in, the doctor checks your vitals, asks questions about your lifestyle, and tells you where you're at health-wise. They adjust recommendations based on your age, habits, and how you're feeling. Well, imagine your financial health in the same way. Does your wealth advisor check-in like your doctor does?

Breaking Down Financial Check-Ups — Think of a financial plan as a health chart. It maps out where you are now, where you want to go, and the steps you need to take. It's tailor-made to fit your unique needs, risk levels, and dreams. A top-notch plan isn't just about counting money; it's about ensuring your money helps you lead a life that's meaningful to you.

[Learn More](#)

SAFETY MOMENT – *Craig A. Shaffer, CSP – SafetyWorks, Inc.*

BURN IT DOWN!

That's not really the objective in construction, but it happens on many jobsites across America when hot work operations are not controlled.

Hot work involves any task capable of igniting a fire or explosion – think welding, torching, burning, grinding/sawing that produces sparks, arc/plasma cutting, flame soldering, torch-applied roofing, & similar work.



*2014 Montrose Apartment Fire – Houston, TX
Welding on roof – windy, no extinguishers
Destroyed \$50M luxury apt. complex*

Hot work permits are often used to help you communicate to your client what hot work is taking place, where, when, & by whom. Then, like a pilot's pre-flight checklist, it offers a list of safety precautions to be taken to limit risk of fire, or damages should one occur.

Whether a permit is required is often dictated by your client or local fire jurisdiction. But not all clients or fire jurisdictions require one. The Hot Work Permit is a document that should be driven internally – not externally. Regardless of whether a permit was required, if you cause a fire on your project, you stand to be put at considerable expense that could involve injuries, physical damage, and lost time, production, & business reputation.

If there are no fire hazards (combustible contents, construction, finishes, building materials, flammables – anything that could burn or explode) within 35 ft. of your hot work area, a permit is usually not needed. When considering the 35 ft. area – don't forget to think in three

dimensions (above & below, as well as around). Make sure to also consider holes, openings, cracks, conductive barriers (walls, decking...), conveyors, &/or ductwork that could allow sparks/slag/heat to travel to adjacent areas where a fire could develop.

Where a fire risk is present within 35 ft., consider an alternative to hot work (like bolting) or moving the hot work to a fire-safe area. If that is not possible, consider removing the fire hazards beyond the hot work area. If that is not possible, use a permit to identify precautions that will need to be taken. This will likely include protecting fire hazard(s) with a flame-resistant (FR) blanket or equivalent and institution of a fire watch throughout hot work and for a period of at least 1 hr. afterward. Additional fire watch personnel may be needed to monitor places that cannot be observed by just one person.

When it comes to hot work, coordination and planning are imperative. For this reason, YOU need to drive the bus when it comes to using a hot work permit.



CRANE TEC Design, Manage, Install.
For all of your overhead crane needs.
crane-tec.com
Visit our site for equipment, services and project gallery.
For immediate results call
1-800-755-6378



D.I. ROOF SEAMERS.
diroofseamers.com | 1-888-343-0456
Our equipment can seam
-any panel
-any seam type
-any manufacturer
With over 30 years experience,
we have the knowledge and
expertise to make sure you get
the right seam, everytime!
-Easy to order!
-Unmatched customer service!
-Technical help available 7
days a week!

MBCEA Chapters

New England Chapter News

Upcoming events:

Platform, Boom Lift and forklift training set for has been postponed. Watch for future announcement.

Envelope air leakage seminar is set for 11/16/2023. Location will be Portsmouth Country Club. Registration will be available shortly.

Two additions to the local board of directors have been voted on and unanimously approved on 9/21/2023. This will bring our board to a full slate of officers. Board term will begin immediately; officer positions will begin January 1, 2024.

Director/Vice President Pat Bowman, Territory Manager New England, All Weather Insulated Panels
Director/Secretary Casey Larson CSR/Admin, Package Steel Systems Inc.

Keith Wentworth, VP at Dutton and Garfield, National MBCEA past president and current MBI president has stepped down from the local MBCEA-NEC board after many, many years of service. Keith will be tremendously missed, but we know that he is only a phone call or email away in the immediate future. We thank him for his service, wisdom and wish him the very best that life can bring.

Carolinas Chapter News

- The Carolinas Chapter held our **North Carolina General Contractors Continuing Education** class on September 21st in Boone, NC. The Class was a huge success with almost 50 contractors receiving their full 8 hours of continuing education. Also, a special thank you to Bill Cole for signing up

3 new members to the MBCEA at this event.

- The Carolinas Chapter will be hosting an in person Notebook Class on "**Temporary Bracing Guidelines for Pre-Engineered Metal Buildings as Required By OSHA**" on **November 9, 2023** at 9am. The class will be presented by Keith Wentworth and hosted at JW Wilson Shop in Denver, NC. The Key Event Sponsor is Osprey Safety Systems. Please register to attend and/or sponsor using the link below.

KEY SPONSORSHIP BY



Osprey Safety Systems LLC

EVENT SPEAKER



KEITH A. WENTWORTH
Vice President - Dutton & Garfield, Inc.

Keith is the current president of the Metal Buildings Institute and Past President of the Board of Directors of the Metal Building Contractors and Erectors Association New England Chapter and Past President of the National Board. He has served on many committees of the MBCEA and was the Chairperson for the Temporary Bracing Guidelines.

Registration Link: <https://mbceacarolinaschapter.wildapricot.org/event-5441495>

Mid-Atlantic Chapter News

The **8th Annual Sporting Clays Tournament** on 10/9 was a great success with 40 participating. The Top Shooter award went to Shawn Limbert, Schlosser Steel Buildings with a score of 86. Ricky Hinson with Aegis graciously accepted the Elmer Fudd Award this year. The top three teams were all registrants of The Kaiser Martin Group!

1. Jeremy Germer, Michael P. Mullin, Michael T. Mullin, Mason Drumheller
2. Jeff Romig, David Leinbach, Art Mitchell, Anthony Guglietti
3. Vince States, Dave Bowman, Randy Romig
- 4.

Once again, we'd like to thank **ATAS International, Butler Mfg., Dominion Construction Group, Nucor Building Systems, Tell Doors, and Therm-All** for sponsoring this event.

The **Mid-Atlantic 16th annual Holiday Social** is taking place on **Friday, December 8, 2023**, from 6:30-10:00 pm in Peddler's Village, Lahaska, PA! It was such a beautiful venue that we had to go back again this year. So if you missed it last year, join us this year! Plan on bringing your staff as your holiday party. We look forward to celebrating our accomplishments, enjoying good food and company, networking and awarding scholarships. See the [registration form](#) for hotel information (**room block expires 11/8**), the schedule, and more.

Special thank you to **ATAS International, Butler Mfg., Dominion Construction Group, Tell Manufacturing and Therm-All** for sponsoring this event! Your support and participation are appreciated. There's still time to add your name to this list (see [sponsorship form](#))! We look forward to spending a wonderful evening together.



CLIPS & ACCESSORIES
We manufacture and supply roof clips and accessories.

LSI GROUP
METAL BUILDING COMPONENTS
BPD - Logan Stampings - Roof Hugger

bpd

Use our online Clip finder at WeGotClips.com



PROVEN Metal Roof RETROFIT SOLUTIONS

Sub-framing systems to fit over any existing metal roof
Schedule more jobs with our prompt fabrication and shipping
Install without disrupting the building occupants

LSI GROUP
METAL BUILDING COMPONENTS
BPD - Logan Stampings - Roof Hugger

ROOF HUGGER

sales@roofhugger.com
www.RoofHugger.com

METAL BUILDINGS INSTITUTE™

The Metal Buildings Institute is the only place for training and information exclusive to the Metal Buildings Industry. MBCEA members receive access to the Quality & Craftsmanship

101 training videos at no charge and receive discounts on other critical training such as Insulated Metal Panels and Temporary Bracing. Visit us on the web at www.metal-buildings-institute.org.

An informative module on [Retrofit Roofing](#) has just been released! [Check out the promo!](#)

While you're on the [MBCEA YouTube Channel](#) watch our Temporary Bracing PSA in either [English](#) or [Spanish](#).

To purchase your copy of Guidelines for Temporary Bracing, [click here](#). MBCEA members take 50% off the purchase price with your 2023 discount code. The discount code will also give members a \$200 discount on the annual subscription to the IMP and Retrofit Roofing modules.

Every contractor and erector should have a copy of the guidelines and access the training!

MBMA is Asking for Our Participation!

One-Question Quarterly Survey to Rate your Metal Building Supplier

Be on the lookout for MBMA's quarterly survey: Net Promoter Score or NPS. NPS is a simple one-question survey that asks, "How likely are you to recommend your metal building supplier to a friend or colleague?" The survey is a great tool for metal building erectors to provide feedback to their suppliers and for suppliers to measure how they are doing and how they can improve.

MBMA is pleased to be working with MBCEA on the survey. The survey link will again be emailed directly to MBCEA members from Ljerka Marini, MBMA's Statistical Services Manager. Erectors will have the opportunity to rate up to five different suppliers each quarter.

Results of the survey will be compiled into a general report with an industry-average NPS. All MBMA members and all participating MBCEA members will receive a copy of the general report. Additionally, MBMA members that get at least five ratings will receive their company-specific NPS. As an added thank you, participating MBCEA members will also receive the latest monthly MBMA Business Conditions report.

If you have any questions on the NPS survey, feel free to reach out to Tony Bouquot directly at tbouquot@mbma.com. Thank you in advance for your participation.



What do you use to mend a jack-o-lantern? A pumpkin patch.