



Reaching New Heights, Together



METAL BUILDING
CONTRACTORS & ERECTORS
ASSOCIATION

Quick Links

[Board of Directors](#)
[Member Directory](#)
[Members Only](#)
[Products & Services](#)

We want to hear from you!

Let us know what is important to you; what kinds of things you are interested in; what you need.

Sasha Demyan, Executive Director
David Leinbach, President
Jackie Meiluta, Program Manager
Britain Graver, Member Services & Administrative Coordinator

Contractors and erectors serious about training are needed to review the new MBI curriculum.

Before we "go live" we need your help to ensure each course is comprehensive and complete; engaging and informative.

Each selected contractor will be given access to one complete unit (e.g. framing) to review with your team. This beta test is meant for your foreman as well as your entry level workers. Content can be viewed on a phone or a computer. You can engage as a group or individually. Jackie will be in touch with you for feedback on what you think. If a section is too wordy, we will expect you to supply job site pictures or videos that better illustrate the point.

Greetings!

Springing Forward: A Season for Renewal and Reevaluation



As the frost thaws and the construction season accelerates, spring offers more than just a change in weather—it provides a natural vantage point for **MBCEA members** to reset. Whether you are coming off a winter slowdown or ramping up for a record-breaking year, now is the time to evaluate the "how" behind your "what."

Reevaluating Process and Procedures

A fresh start begins with an honest look at your current workflows. Industry trends for 2026 show a massive shift toward **digital-first project delivery**. Use this season to:

- **Audit Digital Adoption:** Are your teams still digging through paper folders, or are you utilizing Building Information Modeling (BIM) and AI-driven scheduling to catch clashes before they reach the field?.
- **Review Manufacturer Specs:** MBCEA members pledge to adhere strictly to manufacturer drawings. Spring is the perfect time to refresh your crews on the latest installation manuals and become AC478 accredited.

Safety: Beyond the Checklist

Spring brings unique site hazards, from wet, slippery conditions to increased wind awareness.

- **Seasonal PPE Refresh:** Review PPE and the reasons for it. Educate your employees.
- **The "Tie-Off" Tradition:** Falls remain the leading cause of injury in steel erection. Use your first spring toolbox talk to reinforce the "tie-off" culture.
- **Training & Mentorship:** Leverage seasoned erectors by pairing them with new spring hires, ensuring safety protocols and work habits are passed down through experience.

Setting New Goals for 2026

With the [57th Annual MBCEA Conference](#) on the horizon this April in Colorado Springs, set goals that align with the industry's trajectory:

We will ultimately have 14 units. Each unit will be given to up to 3 contractors for review. Which means we need 42 erectors willing to devote the time to ensure next level training for tomorrow's workers. We know this is a big ask and you are all busy.* You will have plenty of time (at least 2 months) for your review. If you want to participate, hit the button below to be considered. Preference will be given to AC478 accredited members and/or members who actively use the MBI Quality and Craftsmanship training series.

Volunteer

- **Upskilling:** Commit to the new [MBI/NCCER training modules](#) designed for the modern learner when they become available.
- **Recruitment:** Address the projected shortfall of **300,000 new workers** needed this year by refining your company's "Image Enhancement" strategies.
- **Sustainability:** Explore "Green Steel" and carbon tracking as more owners demand [net-zero facilities](#) in 2026.

A fresh start isn't just about cleaning the shop; it's about sharpening the mind. As we head into our busiest months, let's commit to being the safest, most efficient, and most professional segment of the construction industry.

David Leinbach
President, MBCEA
President, Kaiser-Martin Group

CLIPS & ACCESSORIES

We manufacture and supply roof clips and accessories.



Use our online Clip finder at WeGotClips.com

PROVEN Metal Roof RETROFIT SOLUTIONS

Sub-framing systems to fit over any existing metal roof
Schedule more jobs with our prompt fabrication and shipping
Install without disrupting the building occupants



sales@roofhugger.com
www.RoofHugger.com

NEW JOB BOARD!

20% OFF

20% off throughout April!



jobs.mbcea.org




Big News from MBCEA!

We're excited to announce the launch of our **NEW Job Board** — built specifically for the metal buildings industry. This upgraded platform connects companies with skilled professionals who already understand the complexities of metal building construction, erection, and operations.

Whether you're hiring or planning your next move, this job board is designed for you:

 **For Job Seekers:**

- Explore top industry roles
- Post your resume
- Get instant job recommendations with match scores
- Set up job alerts

 **For Employers:**

- Reach qualified metal building professionals
- Increase visibility for your openings
- Choose flexible posting options to fit your needs

 **Special Offer:** MBCEA members get **20% OFF** job postings throughout April!
Start hiring or exploring today  <https://jobs.mbcea.org>



With deep sadness, MBCEA acknowledges the passing of Rob Riess, owner of Riess Construction in Plymouth, NH. Rob, a friend to many, and a highly respected leader in our industry, was known for his deep knowledge, professionalism, and the pride he took in his work and relationships. As a Pioneer Club Member, his contributions and character left a lasting mark on our construction community. We extend our heartfelt condolences to his family, especially his wife Cathy, their children, Alyssa and Joe, his brother's Mike and wife Martha, Pat and wife Cindy, and sister Dolly and her husband Ed and all who had the privilege of knowing him during this difficult time.

Rob Riess Obituary

Mark James is especially known to the MBCEA and its members for his involvement in the roofing games for many years at METALCON. We always looked forward to helping with the planning, seeing what challenges and prizes Mark came up with, and signing up our teams. We truly appreciated this fun opportunity Mark provided us.



In Memory Of

MARK JAMES

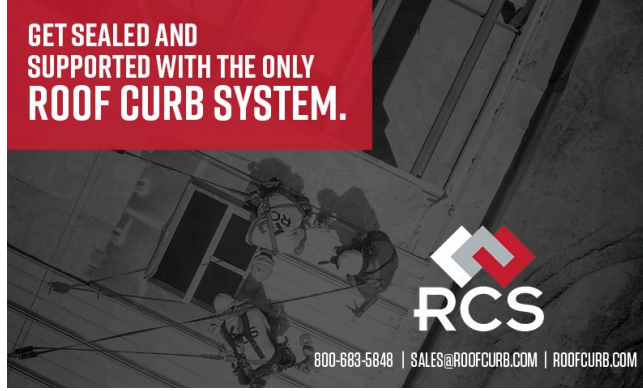
March 22rd, 2026

Mark is survived by his wife of 55 years Paula, his son Jarrod, his grandchildren Brooklyn, Harley, Julian and his great-grandson Trevon. Beyond his professional achievements, Mark was an accomplished artist, cabinet maker, and interior designer.

He loved his family deeply, and those of us who knew and worked with him will miss him profoundly.



**GET SEALED AND
SUPPORTED WITH THE ONLY
ROOF CURB SYSTEM.**



WELCOME NEW MEMBERS

Behlen Industries

Jack Fournel
927 Douglas Street
Brandon, MB R7A7B3
(204)728-1188

karleigh.paul@behlen.ca
www.behlen.ca

Charlotte Steel and Fabrication

Ryan Thornton
12445 Grey Commercial Drive
Midland, NC 28107
(704)963-3533

rthornton@charlottesteelgroup.com

Constructable, Inc.

Jared Hellums
4200 Research Forest Drive #500
The Woodlands, TX 77381
832-844-0500

lwhitfield@constructable.pro
www.constructable.pro

DaGoat Construction Group (DCG)

Mike McCauley
PO BOX 297
292 Main St WEST
Otterville, ON N0J1R0
(519)533-7279

mccauleymon@yahoo.com

Heat Tech Industrial

Devon Kastler
5792 Ideal Drive
Frederick, CO 80516
308-730-0921

devonk@myhti.com
www.myhti.com

Midwest Steel Erectors

Mitch Rohlfing
1531 Madison Ave Suite 200
Mankato, MN 56001
507-317-9972

mitch@midweststeelerecator.com
www.midweststeelerecator.com

Whirlwind Steel Buildings

Brittany Robinson
8234 Hansen Road
Houston, TX 77075
(704)685-4095

brittany.robinson@whirlwindsteel.com
www.whirlwindsteel.com

Whirlwind Steel Buildings

Jerry Marshall
Carolinas Chapter
jerry.marshall@whirlwindsteel.com
www.whirlwindsteel.com

Whirlwind Steel Buildings

Mary Goodyear
Southeast Chapter
mary.goodyear@whirlwindsteel.com
www.whirlwindsteel.com

Whirlwind Steel Buildings

Beau Leverett
Southeast Chapter
beau.leverett@whirlwindsteel.com
www.whirlwindsteel.com

Whirlwind Steel Buildings

Michael Toombs
Midwest Chapter
(417)229-0249
michael.toombs@whirlwindsteel.com
www.whirlwindsteel.com

Whirlwind Steel Buildings

Austin Lindsey
Greater Ohio Chapter
(330)689-6523
austin.lindsey@whirlwindsteel.com
www.whirlwindsteel.com

Whirlwind Steel Buildings

Miranda Lewis
Southeast Chapter
miranda.lewis@whirlwindsteel.com
www.whirlwindsteel.com

M2 Steel

David Spina
104 East Elm Street
Celina, TX 75009
(469)525-0762
dspina@m2steel.com
www.m2steel.com

Steel Innovations Inc

Travis Heimaster
15798 Miss Ellie Lane
Lakeside, CA 92040
(619)390-1922
theimaster@sbdsteel.com
www.steelinnovationsca.com

Triangle Fastener Corporation

Lucas Lovell
Loveland, CO 80538-8840
(970)663-0304
llovell@trianglefastener.com
www.trianglefastener.com

VELUX America

Brian Grohe
104 Ben Casey Drive
Fort Mill, SC 29708
(800)888-3589
brian.grohe@velux.com
www.commercial.veluxusa.com

Venture Builders

Daniel Moore
15 Blue Grouse Court
Bozeman, MT 59715
(406)551-5903
dan@venturebuildersmbs.com
www.venturebuildersmbs.com

Whirlwind Steel Buildings

Carlos Escobedo
Texas Chapter
carlos.escobedo@whirlwindsteel.com
www.whirlwindsteel.com

Whirlwind Steel Buildings

Gary Ogburn
Texas Chapter
gary.ogburn@whirlwindsteel.com
www.whirlwindsteel.com

Whirlwind Steel Buildings

Russell Jones
Texas Chapter
russell.jones@whirlwindsteel.com
www.whirlwindsteel.com

Whirlwind Steel Buildings

Ryan Florack
Texas Chapter
ryan.florack@whirlwindsteel.com
www.whirlwindsteel.com

WolfSteel Buildings, Inc

Adbeel Cabrera
5049 Edwards Ranch Rd
Fort Worth, TX 76109
(844)941-0999
adbeel@wolfsteelbuildings.com
www.wolfsteelbuildings.com

Worsham Brothers, Inc.

Molly Johnson
12 Cantrell Road
Corinth, MS 38834
662-286-8446
molly@worshambrothers.com
www.worshambrothers.com

We look forward to seeing all of you who registered for the 57th Annual MBCEA Conference & MBMA Spring Meeting

Be sure to download the **MBCEA app** to network with other attendees, visit the exhibitor and sponsor profiles, and plan your schedule.

Make Plans to Visit All our Conference Exhibitors!

Ace Clamp - PMC Industries
All Weather Insulated Panels
Anchoright LLC
ATAS International, Inc.
Bay Insulation Systems
Betco, Inc.
Bidding Enterprise LLC
Brucha Corp
C.H.I. Overhead Doors - a Nucor co.
Campana Building Consultants

MakoRabco
McElroy Metal
Metal Sales
MetalCoffeeShop
METALCON
Metallic Products Corp
Metl-Span
NORBEC Architectural
Nucor Buildings Group
OTH Pioneer Rigging

Central States Building Works
 Cladme Inc.
 ClearSpan Fabric Structures
 D.I. Roof Seamers
 Daystar LLC
 Design Components, Inc.
 Donovan Group
 Dynamic Fastener
 EXPI-DOOR Systems, Inc.
 Falk Panel
 Fieldwire by Hilti
 Gaco
 Global Building Products
 Green Span Profiles
 GWY LLC
 Innovative Clean Energy LLC
 International Accreditation Service
 Iso Insulated Panels
 Kingspan Insulated Panels
 Konecranes, Inc.

PermaTherm, Inc.
 Plyco Corporation
 Quick Veneer
 Rambar Steel LLC
 Roof Curb Systems
 Roof Hugger, LLC
 R-Seal
 S-5!
 Silvercote A Service Partners Co.
 SMARTBUILD
 Standard Sheet Metal
 Tell Doors
 Thermal Design, Inc.
 Therm-All
 Trac-Rite Door
 Triangle Fastener Corporation
 VELUX Commercial North America
 VP Buildings
 Wood's Powr-Grip
 Wurth Industry USA

Thank you to our sponsors!



Bay Insulation Systems Experience • Quality • Service
 Member of the Bay Family of Companies

Introducing... BAY RIDER™

Formerly the Owens Corning ELAMINATOR® Insulation System

Click here or scan the QR code to learn more!

www.BayInsulation.com

METALWALK™

designcomponents.com | 800.868.9910

Next up in our free monthly webinar series, MBCEA Presents...

High-Performance Fiberglass Insulation and Energy Codes: What Metal Building Contractors and Erectors Need to Know

**April 16, 2026
12 - 1 PM ET**

As energy codes become increasingly stringent, metal building contractors and erectors must stay informed on solutions that deliver both compliance and performance. This webinar will explore the critical role of high-performance fiberglass insulation systems in meeting energy efficiency requirements while enhancing overall building performance.

Presenters will highlight the unique advantages of various fiberglass insulation systems for Metal Buildings. Attendees will gain insight into the distinct properties of fiberglass insulation that make it a reliable, cost-effective solution for modern metal buildings.

In addition, the session will address key considerations such as fall protection during installation and the added benefits of acoustic performance—equipping contractors and erectors with practical knowledge to improve both jobsite safety and building outcomes.

[Click Here to Register](#)

[Click Here to Sponsor](#)

Save the date for our May webinar, MBCEA Presents...

Insulated Metal Panels from Application to Installation

**May 14, 2026
12 - 1 PM ET**

As energy efficiency, speed of construction, and building performance continue to influence today's project requirements, insulated metal panels (IMPs) have emerged as a high-performing and efficient building envelope solution. This webinar is designed specifically for erectors, and design build contractors looking to better understand where IMPs add value—and how to install them successfully in the field.

The first half of the session will focus on application and use case. Presenters will cover what insulated metal panels are, how they function as a complete enclosure system, and where they make the most sense across commercial and industrial projects. Topics include thermal performance, air and moisture control, durability, aesthetics, and how IMPs can simplify wall and roof assemblies while helping projects meet energy and performance goals.

The second half of the webinar will shift to installation practices and field considerations, offering practical guidance for erectors and installers. This portion will cover ordering, installation sequencing, handling and staging, attachment methods, tolerances, and tips for avoiding common installation challenges.

[Click Here to Register](#)

[Click Here to Sponsor](#)

Construction Law Corner: Depositions: What Are They and How Do They Work?

Josh Quinter
Quinter Corbett

There are 3 parts to any piece of litigation in a basic sense: the pleadings, discovery, and trial. This is true whether you are in court or a private arbitration. The pleadings outline the legal theories and arguments each side has for their position in the case. Discovery then proceeds to ensure the parties are provided the opportunity to collect evidence from others and test their legal theories against the evidence available. Finally, the case goes to trial if it does not settle.

Depositions are part of the discovery process. They usually come after written discovery that includes the exchange of documents and before trial. In effect, these are sessions in which a witness is brought in to give oral testimony. The lawyers in the case are permitted to ask questions of the witness and explore issues that are relevant to the case or which might reasonably lead to the discovery of admissible evidence. This broader standard gives lawyers a little more leeway than what is provided for under the rules of evidence at trial.

[Read on](#)

Apprenticeship Article: The Metal Building Curriculum, Apprenticeship, and MBCEA Conference

Josh Quinter
Quinter Corbett

As the MBCEA conference in Colorado Springs approaches in a couple weeks, I wanted to take a break from my usual offering of educational material on apprenticeship to encourage members who will be attending the conference to be sure to participate in the class on the metal building curriculum and its relationship to apprenticeship. This session will be very informative and will demonstrate the exceptionally hard work people in MBCEA have been undertaking to develop a world class training program for metal building assembly. It is this training program that will be the lynch pin of apprenticeship training for metal building assemblers and erectors going forward.

[Read on to see why this is critical](#)

America's Strongest Sub-Frame

TOPHAT
enhanced engineering

TopHat Framing Systems
www.TopHatFraming.com
TILane@TopHatFraming.com
330-931-9201

CORLE
BUILDING SYSTEMS
Building Trust in Steel

"The Customer is the focus of everything we do."

No Building is Too Big or Too Small For Us!!

404 Sarah Furnace Rd., Imler PA 16655 | (814) 276-9611 | corle.com

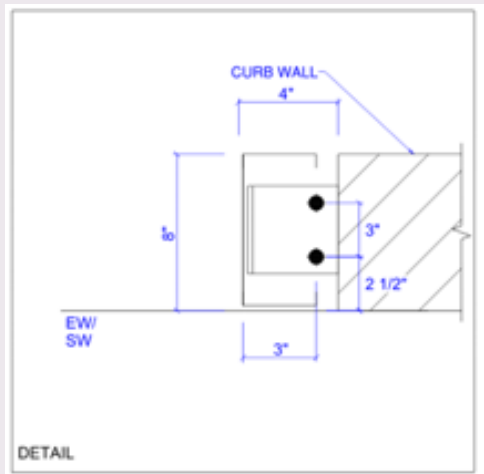
Corle Building Systems is an IAS-accredited and CSA-certified manufacturer specializing in pre-engineered steel buildings.

Technical Corner: The Pitfalls of Base Conditions on Metal Buildings - Part 2 - Framed Openings

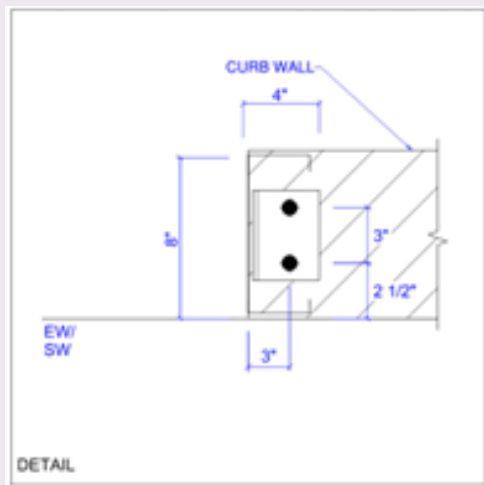
MBCEA Technical Committee Member, Tucker Cope, PE, M-Eng.

Another potential issue arises at the base condition of framed openings when a perimeter curb wall is present. The typical pre-engineered metal building (PEMB) approach extends the jamb through the curb wall to the finished floor elevation, requiring the curb wall to terminate short of the opening.

This default configuration introduces several construction and sequencing challenges. Most notably, a concrete slab-on-grade is typically required to provide a bearing and attachment surface for the jamb base. Additionally, the curb wall installation is deferred until after the jambs are erected, resulting in inefficiencies in construction sequencing and coordination.



An alternative approach is to construct the perimeter curb wall prior to erection of the framed opening and subsequently anchor the jambs to the top of the curb wall. Under this configuration, the curb wall must be designed with sufficient structural capacity and reinforcing to resist the vertical and lateral loads transferred from the jambs, including wind-induced forces, as the load path is terminated at the top of the wall rather than extending to the finished floor elevation.



As illustrated by the two approaches described above, framed openings at perimeter curb wall conditions require a high level of coordination and pre-planning regardless of the selected detailing strategy. Each option carries distinct structural and construction sequencing implications that must be evaluated during design. As noted in Part 1 of this series, proactively addressing these conditions in the design phase will mitigate potential sequencing conflicts and constructability issues during construction.

AC478 - MEMBER SPOTLIGHT

Merit Building Systems Achieves AC478 Accreditation

Merit Building Systems is a furnish and install Metal Building Systems company headquartered in the Southeast U.S., with a national reach. They specialize in a wide range of project types, including white-box warehouses, educational facilities, athletic complexes, multi-tenant office buildings, and industrial structures. They also operate a full-service fabrication facility dedicated to miscellaneous steel projects, offering both furnish-only and complete installation services.



Merit has a steadfast focus on innovation, reliability, and excellence. They are committed to forging enduring relationships with clients, built on trust and collaboration. Their team has built a reputation

on safe practices, disciplined processes, and the highest standards in the industry. Earning AC478 accreditation was seen as a way to reinforce the systems they already have in place and to showcase the level of professionalism their clients expect from them.

“As our company continues to grow, it’s important that our dedication to quality, safety, and consistency grows with it,” said Scott Fitzpatrick, Chief Revenue Officer. “AC478 gives our clients clear, third-party validation that Merit operates with a level of rigor that matches our word. It demonstrates that our crews are trained, our procedures are strong, and our commitment to excellence is measurable—not just promised.”

Fitzpatrick continued, “Our clients trust us with critical components of their projects, and this accreditation only strengthens that trust. It reflects who we are as a company: a team of builders who take pride in our company, stand behind our work, and deliver results that hold up to the highest standards in our industry.”

For more information about Merit, visit <https://meritbuildings.com/> . For more information about AC478, <https://www.mbcea.org/ac478-accreditation>

Have questions about AC478? Contact [Jackie Meiluta](#) Check out the [AC478 section](#) of the [Members Only area](#) of the MBCEA website. Hear from your peers on the [MBCEA YouTube channel](#).

PROVE YOUR QUALITY WITH ACCREDITATION

AC478 Roundtable Thursday, May 15, 2026 - 2 pm ET

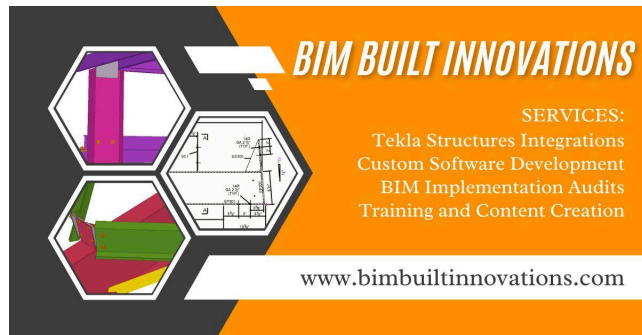
Please join us for an informative roundtable on our signature Quality initiative - AC478. Topic to be determined. If you are interested in this powerful quality initiative, please visit the [Members Only](#) area of the MBCEA website for everything you need to know. Introductory information, especially for non-MBCEA members can be found on our [public Accreditation page](#).

[Register Here](#)



**ONE PARTNER. EVERY SECTOR.
STRONGER RESULTS.**

SEE WHAT THE CMB BUILDER NETWORK CAN DO FOR YOU
WWW.CANADIANMETALBUILDINGS.COM/MBCEA-NEWSLETTER



BIM BUILT INNOVATIONS

SERVICES:
Tekla Structures Integrations
Custom Software Development
BIM Implementation Audits
Training and Content Creation

www.bimbuiltinnovations.com

MBCEA Chapter News

Greater Ohio Chapter

A great evening with the MBCEA Greater Ohio Chapter at Urban Meyer’s Pint House in Dublin. The food was excellent, the cold beverages were flowing, and the staff did a fantastic job taking care of our group.

More importantly, it was a great opportunity to catch up with industry peers and have some meaningful conversations about the current state of the construction market and what everyone is seeing across their local regions. Events like this are always a good reminder of how valuable it is to step away from the day-to-day grind and connect with others in the industry.

We plan to make this an annual gathering, so if you couldn't attend this year, please be sure to carve out some time next year.

Next Event:

 May 14, 2026 |  Blackwing Shooting Center – Delaware, OH

Stay tuned for additional details.

Mid-Atlantic Chapter

Our annual sporting clays event will be held on Thursday, June 4, 2026, at Lehigh Valley Sporting Clays in Coplay, PA. Registration and breakfast at 8:30 am, safety briefing at 9:00 am. To be announced on the chapter page shortly.

[MAD Chapter Page](#)

New England Chapter

2026 MBCEA NEC Scholarship application is now open.

[Apply Here](#)

Save the Date! The 35th Annual New England Chapter Golf Tournament will be held on **7/23/26** at Waverly Oaks Golf Club in Plymouth, MA. Sponsorship Registration and Golf Entry Forms will be going out at the end of the month.

Ontario Chapter

The MBCEA Ontario Chapter held a successful Q1 meeting in Woodbridge, Ontario, with 45 participants in attendance. A big thank you to our meeting sponsor, Kingspan Insulated Metal Panels, for their support.

Committee leaders provided updates on their current initiatives and ongoing projects. Our keynote speaker, Joel Grace, P.Eng., from Robertson Building Systems, delivered an informative presentation on metal building systems and explained how bracing works within these structures.

We are also pleased to announce that we have secured the venue and deposit for our first Annual Golf Tournament, which will be held on June 15, 2026, at Blue Springs Golf Club in Acton, Ontario. Additional details will be shared soon with our members, distributed through our contact directory, and posted on our LinkedIn page. Our Q2 chapter meeting will also take place during the June 15 event.

Our membership continues to grow, and we encourage all members to help spread the word about the association to industry partners, customers, and erectors.



Carolinas Chapter

While the Summer Meeting is still several months away, we are continuing to make plans for this much anticipated and enjoyed event. Please mark your calendars for **June 18-21** and make plans to join us. Make note the agenda linked below for the meeting this year has changed from years past. Also, links for Sponsorship and hotel reservation are below. Hotels must be reserved by end of day on **Friday, May 8th, 2026**.

If you have any questions, please email Joyce at carolinas@mbcea.org. Anyone with questions regarding sponsoring, please email Reggie at rmoore@brentongrey.com. Registrations for sponsors should reach out to Joyce at the email above. We greatly appreciate your support of this event.

[Click Here to Register](#)

[Click Here to Sponsor](#)

[View the Agenda](#)

MBCEA Carolinas Spring Scholarship Event 2026
May 7, 2026

Please join us for our 2026 Spring Scholarship Event.

The MBCEA-Carolinas Chapter is hosting our annual spring scholarship event. The Spring event this year will be Sporting Clays. This will be held at Shane's Sporting Clays in Summerfield, NC. Sporting Clays will have lunch starting at 12:00pm with sporting clays starting at 1pm. This should be another great event, so please register and sign up to sponsor as soon as possible. The final date to register is April 28th.

Noon - Sporting Clays Lunch
1:00 pm - Sporting Clays Start
Awards presentation and Social immediately following

EVENT COST/SPONSORSHIP

Sporting clays registrations include lunch and post-event social.

Individual Sporting Clays - \$125 (includes clays only)

Station Sponsor - \$200 (includes station sign) or add \$100 (\$300 total) to include sponsorship of Fall Golf outing

Lunch Sponsor - \$400 (Limit 1 Sponsor)

Awards Sponsor - \$400 (Limit 1 Sponsor)

Post-Event Beverage Sponsor - \$400 (Limit 1 Sponsor)

Event Sponsor - \$600 (Limit 1 Sponsor)

We are excited about this event and look forward to seeing everyone.

For any questions or additional information regarding the **Sporting Clays** please contact Tony Downs, tdowns@downsconstruction.net

*Please email Adam for any registration issues at adam@garanco.com

Register Here



CRANE & TEC Design. Manage. Install.
For all of your overhead crane needs.
crane-tec.com
Visit our site for equipment, services and project gallery.
For immediate results call
1-800-755-6378



D.I. ROOF SEAMERS
diroofseamers.com | 1-888-343-0456

- Our equipment can seam
-any panel
-any seam type
-any manufacturer
- Easy to order!
- Unmatched customer service!
- Technical help available 7 days a week!

With over 30 years experience, we have the knowledge and expertise to make sure you get the right seam, everytime!



Participate in MetalCoffeeShop's Metal Machines Contest

Photo Contest

Gallery



MBCEA Contractor Members, Please Participate in the MBMA NPS Survey

You may have received an email, so you can either respond to that or respond here by April 30th.

NPS Survey



The Metal Buildings Institute is the only place for training and information exclusive to the Metal Buildings Industry. Visit us on the web at www.metal-buildings-institute.org.

MBCEA members receive free access to the Quality & Craftsmanship 101 11-module video series, \$200 off the annual subscription to the 102 IMP and 201 Retrofit Roofing Modules, and \$150 off the Guidelines for Temporary Bracing. The discount code can be found on our [Training page](#).

Every contractor and erector should have a copy of the guidelines and access the training!

In the News / Member Spotlight

[Essential Insulation Systems for Metal Building Energy Code Compliance](#)

[ATAS Announces the 2025 Sales Team of the Year](#)

[Metal Roof Leak – Call a Roofer... Right?](#)

[Submissions for the Metal Architecture 2026 Design Awards are now open!](#)

[2026 MCA Summer Meeting](#)

April is the time to turn over a new leaf - Terri Guillemets

MBCEA | PO Box 3429 | Bethlehem, PA 18017 US

[Unsubscribe](#) | [Update Profile](#) | [Constant Contact Data Notice](#)



Try email marketing for free today!