

2025 MBCEA Conference and MBMA Spring Meeting



METAL BUILDING
CONTRACTORS & ERECTORS
ASSOCIATION

MAY 7-9, CHARLOTTE NC



METAL BUILDING MANUFACTURERS ASSOCIATION®
Research | Leadership | Education

Maximize OpportUNITY!



METAL BUILDING
CONTRACTORS & ERECTORS
ASSOCIATION

MAY 7-9, CHARLOTTE NC



METAL BUILDING MANUFACTURERS ASSOCIATION®
Research | Leadership | Education

Photo Op Moment !



1

Crossed Legs

Creative, Imaginative,
Defensive or Closed-off



2

Ankles Crossed

Down-to-earth, Confident,
Ambitious, Defensive



3

Knees Straight

Intelligent, Rational Thinkers,
Punctual, Smart Workers, AND

Ready for a Photo Op!



Sasha Demyan
Executive Director
MBCEA



Robert Tiffin
President
Silvercote: National Team



Justin Beall
Secretary
DD Construction: Owner



David Leinbach
Vice President
Kaiser Martin Group: Owner



Dave Tomchak
Treasurer
Bay Insulation: Marketing

Executive Committee



Jennifer Heimburger
Past President
Heimburger Construction Owner

Hall of Fame – Founder Inductee



“Sasha Demyan...not merely a leader; a catalyst for change,
a tireless advocate, and a visionary”



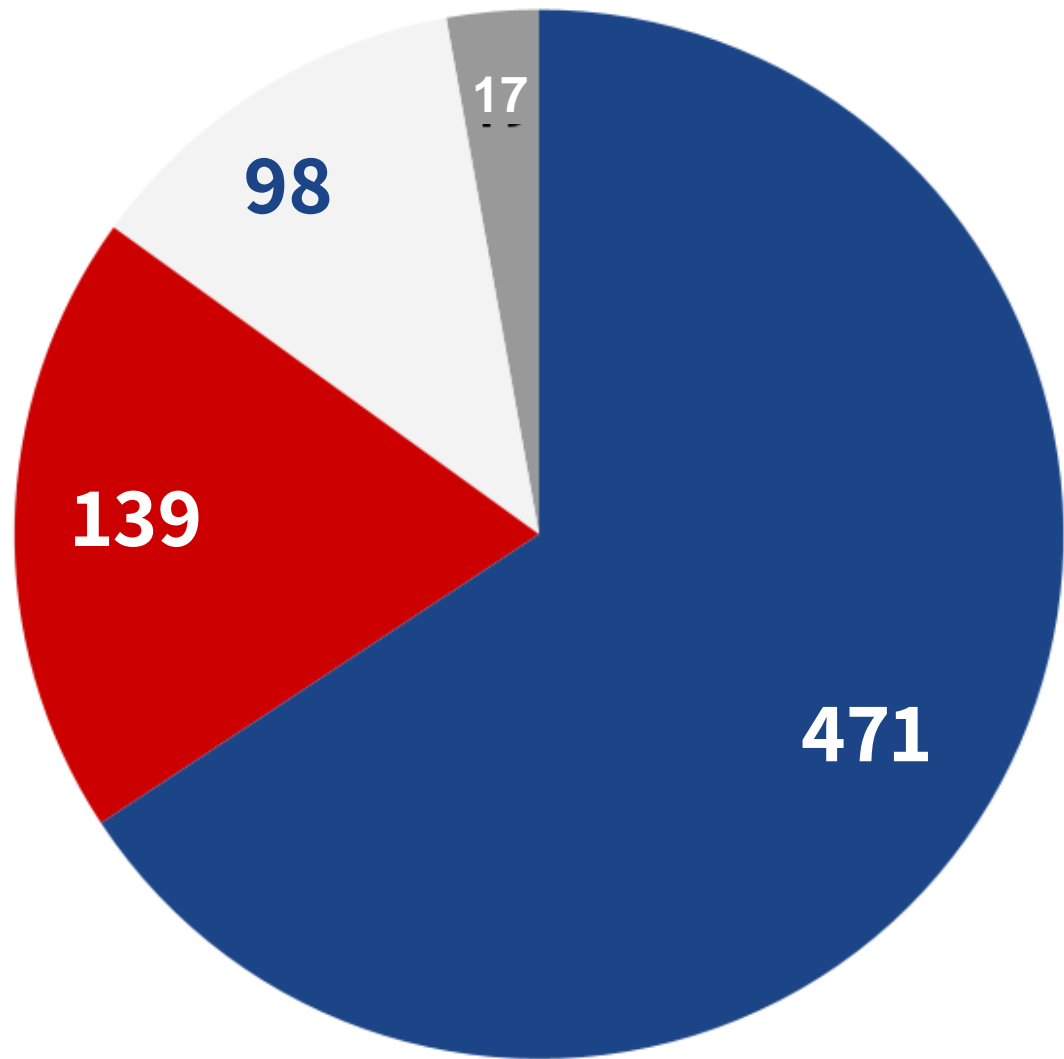
AC478 Accredited Member Companies

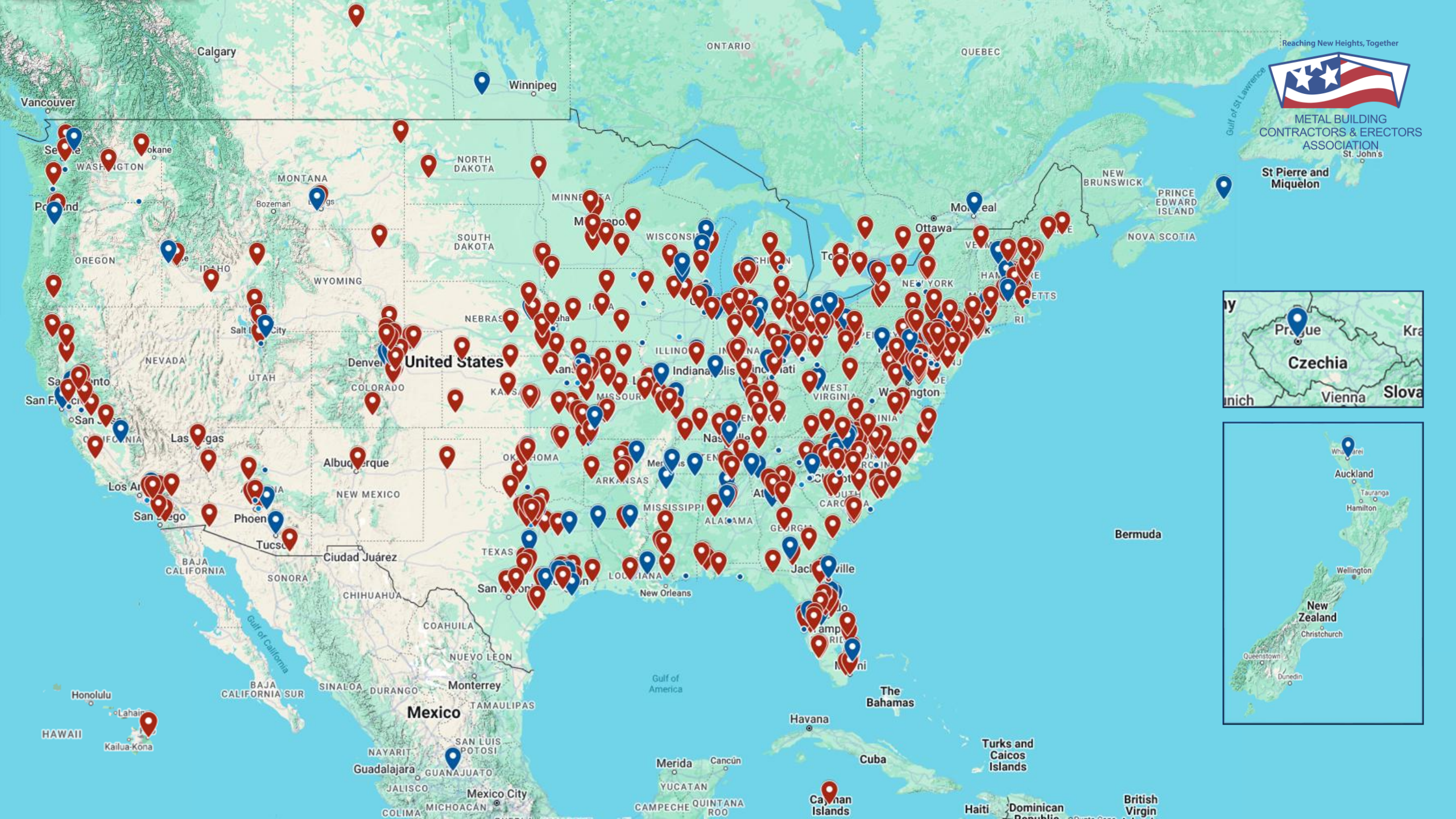


MBCEA Members



● Contractor ● Industry ● Regional Reps ● Lifetime



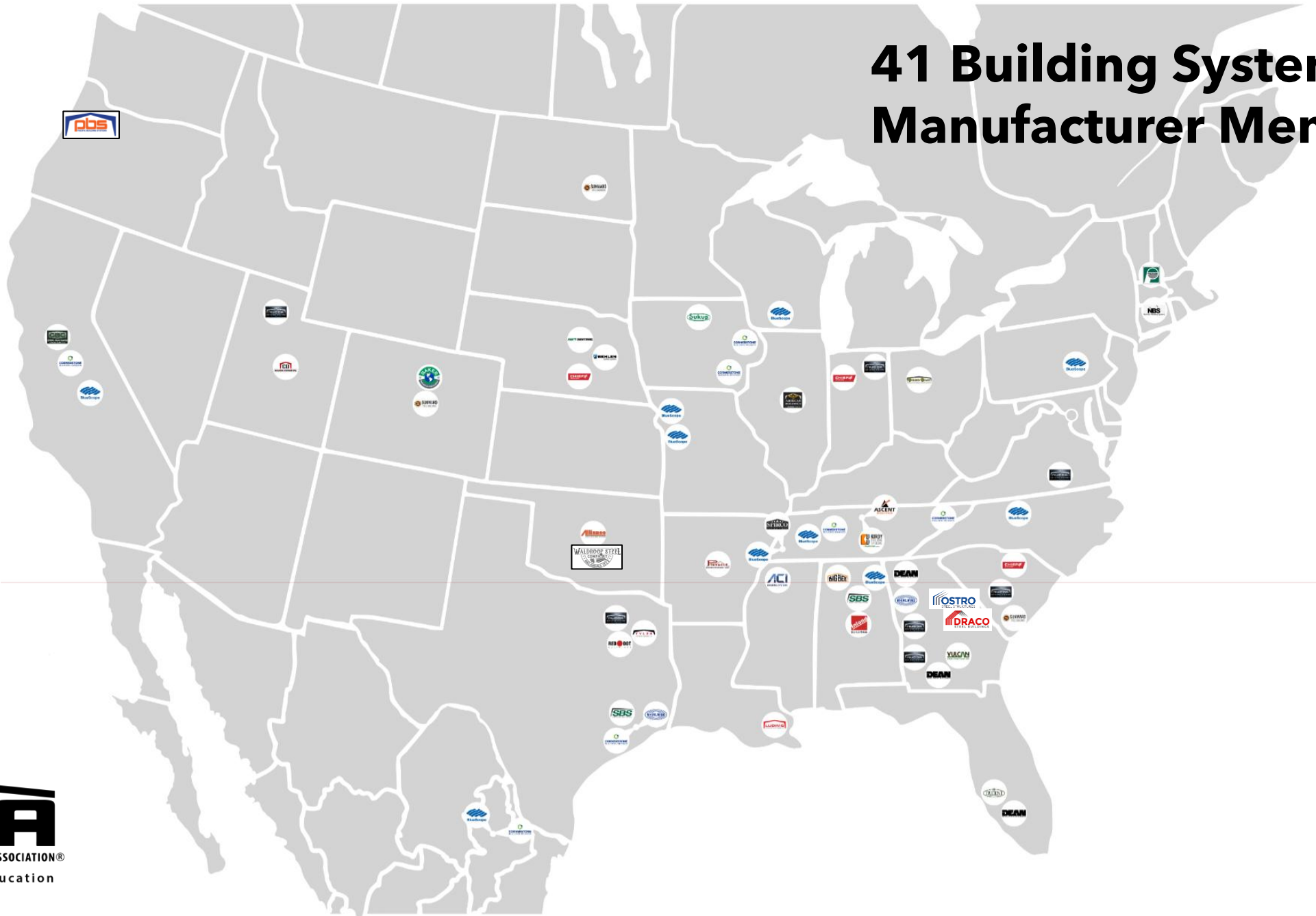


Reaching New Heights, Together
**METAL BUILDING
CONTRACTORS & ERECTORS
ASSOCIATION**
St. John's

**St Pierre and
Miquelon**



41 Building Systems Manufacturer Members

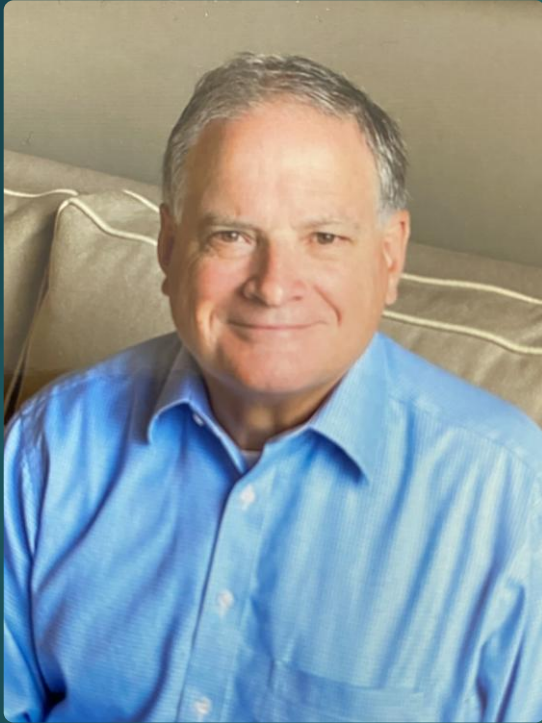


75 Associate Members

- ABIS
- ARCO Design/Build
- Akzo Nobel
- All Weather
- Applied Testing
- Atlas Bolt & Screw
- AZZ Precoat Metals
- Barndominium Co.
- Bay Insulation
- Benchmark Consulting
- Birmingham Fastener
- BRUCHA
- Building Env. Cons.
- Building Products Dev.
- Building Research Sys.
- CertainTeed
- Commercial Metals
- Crane Composites
- Curber Manufacturing
- Curbs Plus
- Diamond Door
- D.I. Roof Seamers
- Donovan Group
- DuPont
- Dynamic Fastener
- Expi-Door
- FALK Panel
- Finley Consulting
- Foam Products Corp.
- Glasteel/Stabilt
- Global Building Prod.
- H.B. Fuller
- Holcim
- IDEAS CONNX
- Innovative Clean Energy
- Int Accreditation Service
- Intertape
- Intertek
- ITW CCNA
- John L. Armitage Co.
- Kenilworth Media
- Kingspan
- Konecranes
- Lamtec
- Lincoln Electric
- Metal Building Software
- Metl-Span
- Metallic Products
- Nederveld
- New Millennium
- Nucor Sheet Mill
- Owens Corning
- PPG
- Preferred Solutions
- Preformed Line Prod.
- Premier Steel Doors
- RMG Erectors
- Roof Hugger
- R-Seal
- S-5!
- Sealed "N" Safe
- SFS Intec
- Sherwin-Williams
- Silvercote
- Simpson Strong-Tie
- Steel Dynamics
- St. Louis Screw & Bolt
- SWD Urethane
- Telling Industries
- Tell Manufacturing
- Therm-All
- TopHat
- Triangle Fastener
- US Steel
- Wurth

Board of Directors

- ▶ Christen Funk – Butler – Chair of the Board
- ▶ Rob Mutersbaugh – ASG – Vice Chair
- ▶ Ron Ambrosius – Inland
- ▶ Tom Boal – Behlen
- ▶ Steve Browning – Vulcan
- ▶ Austin Hess – Cornerstone
- ▶ Dave Koubek – Chief
- ▶ Brant Smith – Pacific
- ▶ Mark Van Dyken – Nucor
- ▶ David Hirte – AkzoNobel
- ▶ Darren McGonigle – Konecranes



**DIRECTOR OF RESEARCH
& ENGINEERING**

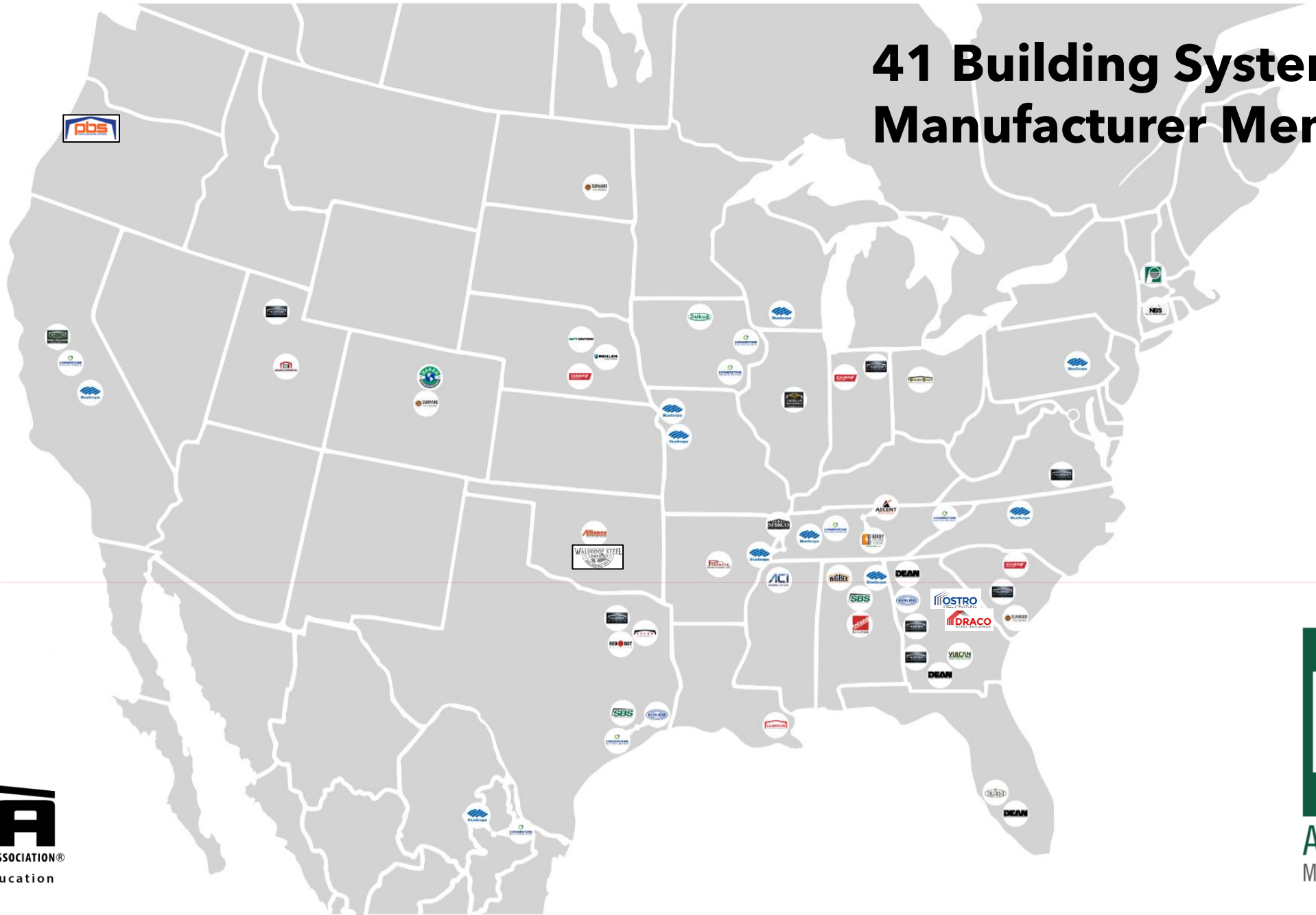


**DIRECTOR OF CODES &
STANDARDS**



**ASSISTANT DIRECTOR OF
RESEARCH &
ENGINEERING**

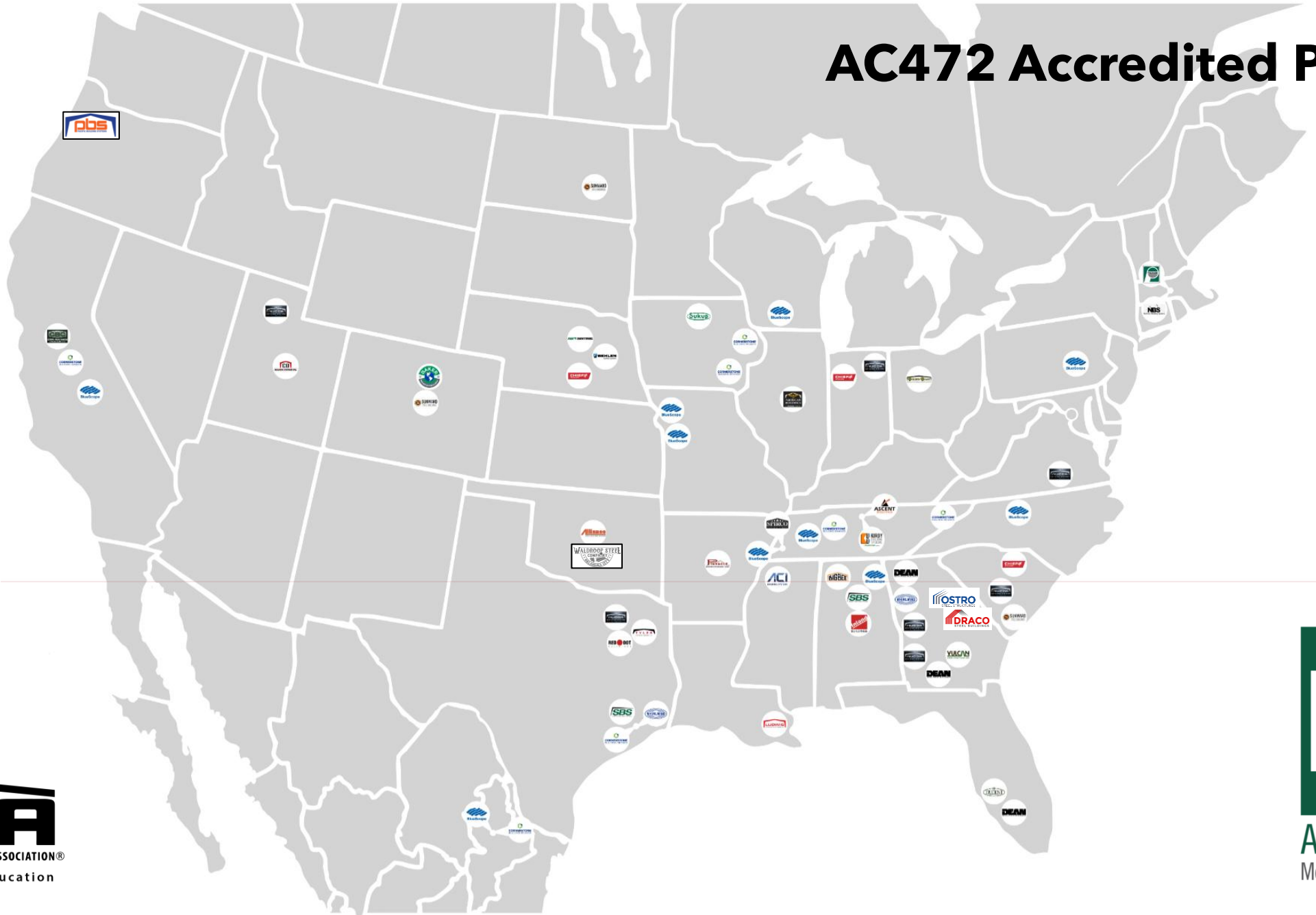
41 Building System Manufacturer Members



ASSOCIATION®
ducation



AC472 Accredited Plants





=



Metal Building Contractors and Erectors Association (MBCEA)

**MBCEA
Presents**

January

Contract Talks

Josh Quinter: MBCEA Counsel

February

Holistic Tax Planning

Shannon Fowler: Ironbridge Wealth Counsel

March

What's New for OSHA

Josh Quinter: MBCEA Counsel

May 22
12:00 PM

Code Update

Bill Beals – Therm-All



**AC478
Roundtable**



**New
Members
Quarterly
7.9.25**

MBCEA Monthly Webinar Series



Month	Topic	Attended
January	Contract Talks (Josh Quinter)	58
February	Tax Planning (Shannon Fowler)	20
March	What's New in OSHA (Craig Shaffer)	40
April	Overhead Cranes	60
May	Code Updates (Bill Beals)	-



MBCEA MBMA Conference Presentations

Conference Presentations

55th Annual Conference – April 24-26, 2024, San Diego

- [Job Costing Presentation](#)
- [Business Valuation / Acquisitions / Succession Planning](#)
- [MBMA & MBCEA Association Updates](#)

52nd Annual Virtual Conference – April 28-30, 2021, Virtual

- [Opening Session Steel Production and Pricing Slides](#)
- [Keynote: Post Pandemic...Issues, Challenges and Strategies to Grow your Business](#)
- [Building of the Year Awards Ceremony](#)

AIA Approved CEU Courses

Library

[AC472 & AC478 Accreditations AIA Presentation](#) - Downloadable presentation in Dropbox that you can present to architects.

AC478 Roundtable Recordings

[3/20/25](#) - The focus was on the Internal Audit and Management Review portion of the criteria.

[1/23/25](#) - Greg West, International Accreditation Service (IAS) addresses the marketing /support IAS offers and what happens after you apply.

[11/21/24](#) - Jackie Meiluta discusses the training required to meet the criteria.

[9/19/24](#) - Cory Dukowitz, Safety Manager with Rice Companies shares why they became accredited. Hance Construction talks about meeting the subcontractor criteria.

[7/25/24](#) Passcode: 91p?GfGG - Joe Allen, Project Manager, Safety and Training Mgr. for Thomas Phoenix International digs deeper into the Journeyworker requirements.

[5/30/24](#) Passcode: &QCGJ\$5\$p

[3/28/24](#) - the Manufacturer's perspective. Joining our panel of experts is Sarah Toth, Area Manager for Butler Manufacturing who highlighted AC478 at the recent Butler meeting.

[1/18/24](#) - review of the changes that take effect this year

MBCEA.org

**Member's
Only Area**

Metal Building Contractors and Erectors Association (MBCEA)

MBCEA Presents Chapter Events

April

4/11 Greater Ohio
"Overhead Cranes"

4/24 Carolinas
Scholarship Event: Clay Shoot

May

5/15 Greater Ohio
Sporting Clays

5/29 Mid Atlantic
"Having Hard Conversations"

June

6/6 Rocky Mountain
Trap Shooting

6/13 North West
Mariners vs Guardians Game

6/19-22 Carolinas
Summer Meeting – Hilton Head Island

July

7/17 New England
Golf Tournament

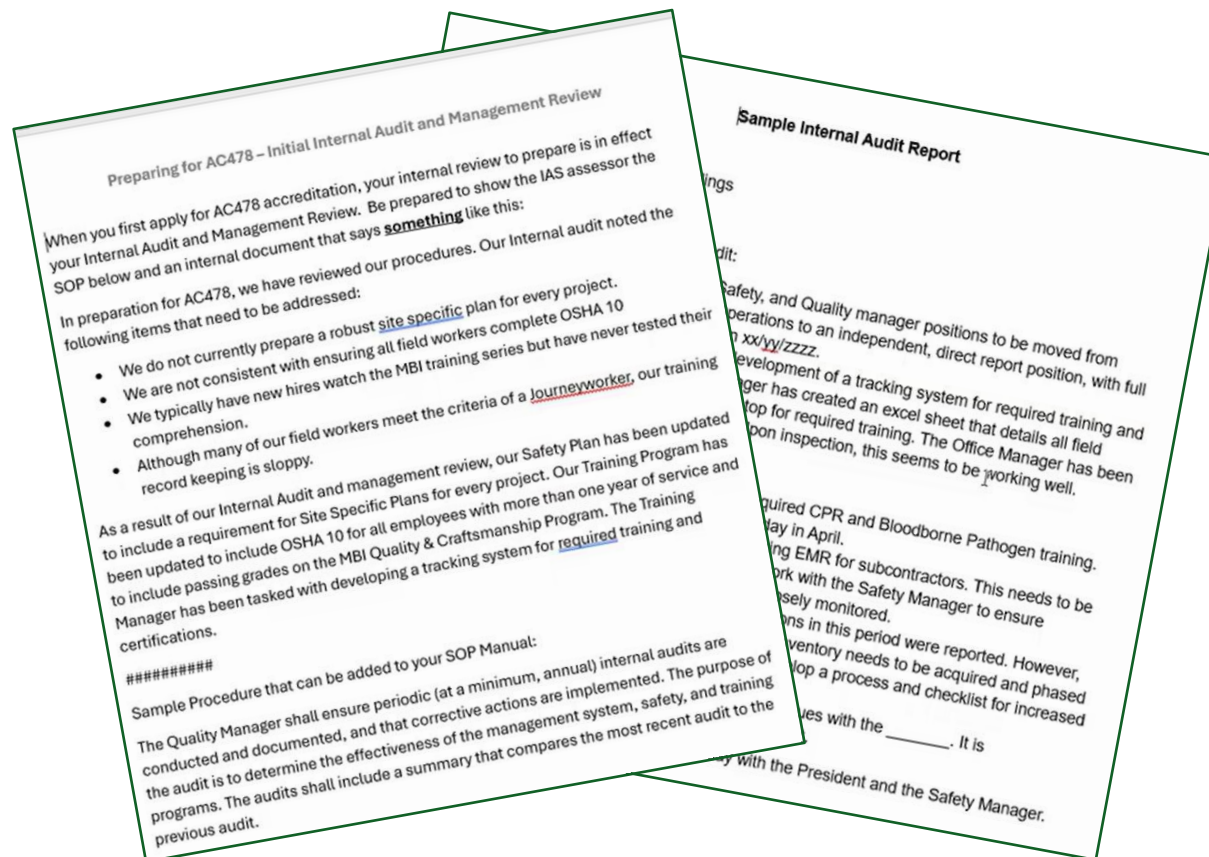
Are You
Registered
for **Your**
Chapter
Event?



AC478 Roundtable



Jackie Meiluta



March 20
*“Preparing for AC478
Initial Audit and
Management Review”*

May 15

Focus on the Site-Specific Plan
as it relates to the criteria



2024 METAL BUILDING STUDENT DESIGN COMPETITION

University Sports Complex



Pragathi Chandramouli
University of Massachusetts - Amherst



Maya Westbrook
California State University – Sacramento



@MBMAMedia

UNDERGRADUATE DIVISION



MAYA WESTBROCK - 1ST PLACE UNDERGRADUATE AND OVERALL

California State University - Sacramento

The 1st place undergraduate and overall award of \$5,000 went to Maya Westbrook of California State University – Sacramento.

Faculty Advisor: Mark Roddy

MAYA'S DESIGN:



NAMAN DESAI AND CARLOS MARTINEZ - 2ND PLACE UNDERGRADUATE

Texas A&M University

The team of Naman Desai and Carlos Martinez of Texas A&M University in College Station, TX won the \$3,000 undergraduate second prize.

Faculty Advisor: Marcel Erminy

THE TEAM'S DESIGN:

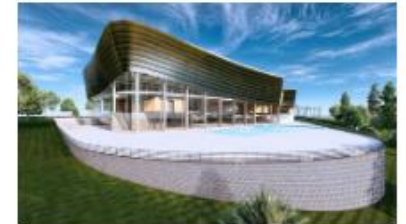


UNIVERSIDAD DEL GUATEMALA TEAM - 3RD PLACE UNDERGRADUATE

Universidad del Guatemala

Third place, and \$2,000, went to the team of Gabriel Paz and Michelle Quan, students at the Universidad del Istmo in Frajinas, Guatemala. They were advised by Luis Miguel Sagastume.

THE TEAM'S DESIGN:



mbmaeducation.org



Faculty Workshop

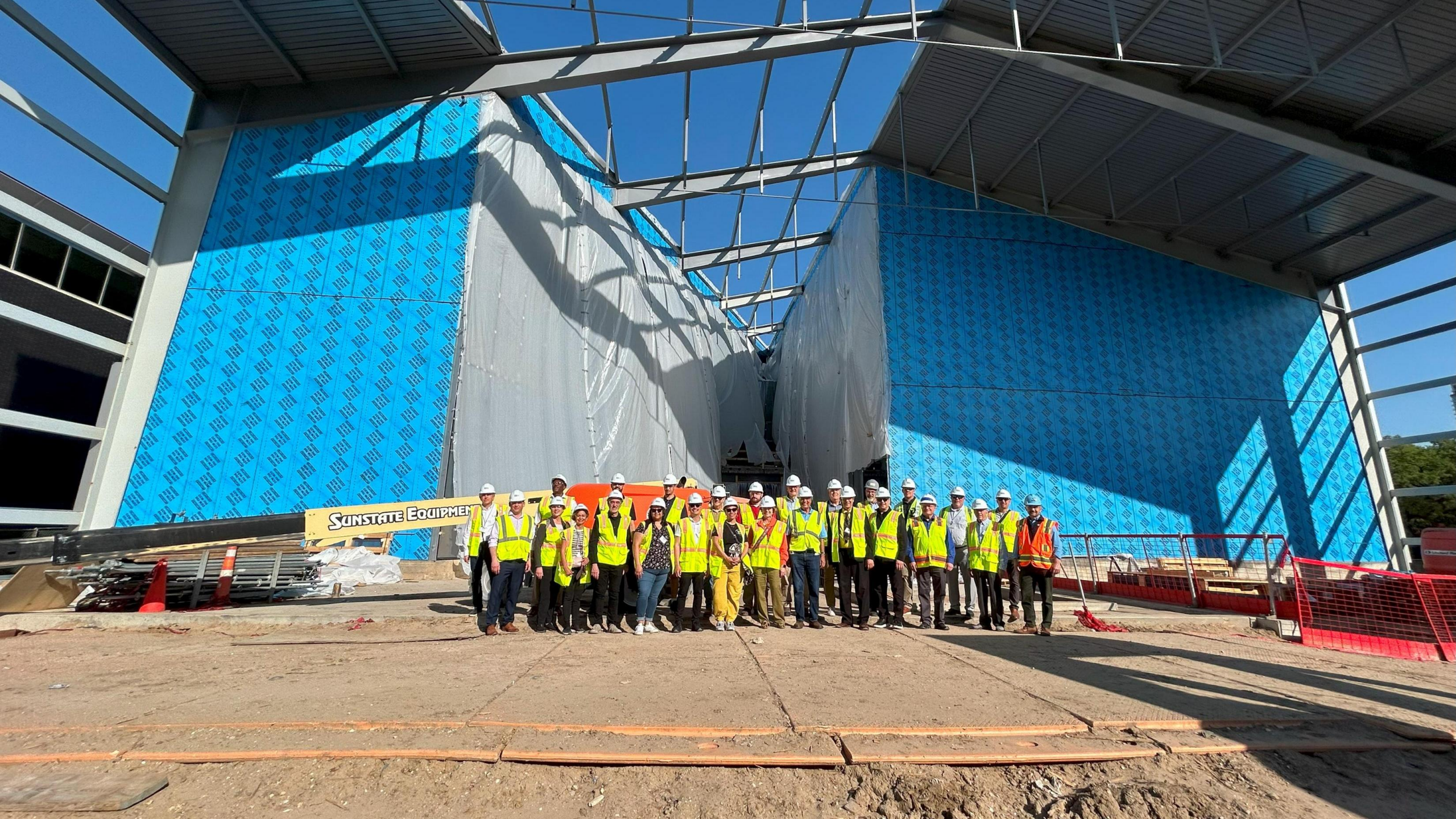
MBMA
METAL BUILDING MANUFACTURERS ASSOCIATION®
Research | Leadership | Education











AIA25

Conference
on Architecture
& Design

BOSTON JUNE 4-7



CAN YOU SPOT THE METAL BUILDING?





Metal Building Bones

Lunch and Learn CEU Courses



**Approved
Continuing
Education**



Jeff Wolgamott

Vice President
Ironhide Construction



Apprenticeship Committee

Mission

To facilitate the development of apprenticeship programs specifically for the erection and assembly of metal buildings in as many jurisdictions as possible

“...help companies and workers better their workmanship, improve on their efficiency, and work more safely.”

“...good things are ahead.”

Joshua C. Quinter
Committee Chair

Monthly Newsletter

Reaching New Heights, Together



METAL BUILDING
CONTRACTORS & ERECTORS
ASSOCIATION

Quick Links

[Board of Directors](#)
[\[kpxhl4lab.cc.rs6.net\]](#)
[Member Directory](#)
[\[kpxhl4lab.cc.rs6.net\]](#)
[Members Only](#)
[\[kpxhl4lab.cc.rs6.net\]](#)
[Products & Services](#)
[\[kpxhl4lab.cc.rs6.net\]](#)
[MBCEA Conference](#)
[\[kpxhl4lab.cc.rs6.net\]](#)

We want to hear from you!

Let us know what is important to you; what kinds of things you are interested in; what you need.

Sasha Demyan, Executive Director
Robert Tiffin, President
Jackie Meiluta, Program Manager
Britain Graver, Administrative Assistant

**Plan your Visit with
Exhibitors**

Hello Robert,



Uncertainty.

In the METALCON Online presents *Steel and Metal Tariffs Uncovered* of March 19th the word spoken in consensus in describing our present economic conditions, was "uncertainty."

There are schools of thought, and idioms that describe an action in times such as these; "control that which you change." This concept encourages us to focus on aspects of our life that you can directly influence while accepting those beyond our control. This can lead to a sense of empowerment and reduced anxiety by directing energy and efforts to decisions and actions that can yield positive outcomes.

Projections for the second quarter of 2025 show another period of mixed performance. As members of the MBCEA, to navigate effectively we can and should focus on (respective to your interest) a few strategies, with the most valuable being "stay informed." Keep a close watch on economic indicators such as interest rates, inflation and construction trends. Other strategies to consider:

- Adopting new technology (i.e. BIM or AI to improve project planning, even execution)
- Accreditation (AC478 will set you apart from others for key customers)

Construction Law Corner - The Odd Case of the Statute of Repose

Joshua C. Quinter, MBCEA Counsel
Quinter Corbett, PC
jquinter@quintercorbett.com

Most people who have been involved in the legal process are aware of the statute of limitations. Almost as many are unfamiliar with its distant cousin the statute of repose. They serve similar purposes – which is to make legal claims untimely – by way of different mechanisms. While understanding the reasons as to why they both exist is an interesting intellectual exercise, understanding how they apply is more important.

Traditional Vs. Roth IRA

By Shannon Fowler, Ironbridge Wealth Counsel

Traditional Individual Retirement Accounts (IRAs), which were created in 1974, are owned by roughly 41 million U.S. households. And Roth IRAs, created as part of the Taxpayer Relief Act in 1997, are owned by nearly 32 million households.



Both are IRAs. And yet, each is quite different.

Up to certain limits, traditional IRAs allow individuals to make tax-deductible contributions to their account(s). Distributions from traditional IRAs are taxed as ordinary income, and if taken before age 59½, may be subject to a 10% federal income tax penalty. Generally, once you reach age 73, you must begin taking required minimum distributions.

[Learn More \[kpxhl4lab.cc.rs6.net\]](#)

**Chapter News,
New Member Welcome, and More!**

MBCEA Publishing Partners: Kenilworth Media

NEWS ARTICLES PROJECTS PRODUCTS VIDEOS AWARDS WEBINARS CONTESTS ARCHIVES SUBSCRIBE LOGIN

Projects, news & features

HOME / NEWS

INDUSTRY NEWS


MBCEA celebrates innovation, progress in metal construction

Posted May 10, 2024

The Metal Building Contractors and Erectors Association (MBCEA) announced its 2024 Building of the Year winners at the 55th Annual MBCEA Conference in San Diego. The overall winner is the Truck Center Cos. sales and service center in Mankato, Minn., completed by APX Construction Group, based in Mankato.

Additionally, Awards of Merit and Excellence were announced for buildings in three categories: Commercial, Community, and Manufacturing and Warehousing, while an Award of Excellence was presented in the Agricultural category.

"Congratulations to APX Construction as this year's overall winner," says Robert Tiffin, MBCEA president. "Their work on the Truck Center Cos. complex was outstanding, and they had some great competition as well. It's amazing to see how this contest has grown, and this year we saw 31 companies enter a total of 40 projects for consideration."



Jamie Jacobs, Jess Blais, Sasha Demyan, Dawn Quam, Mitch Rohlfing Photo courtesy Metal Building Contractors and Erectors Association (MBCEA)

This Month's Features

Metal panels deliver efficiencies without compromising quality

Metal panels are the best option for contractors looking for both job and cost efficiencies.

The future of facades: Integrating metal into modern building designs

In today's fast-evolving architectural landscape, facades are more than just exterior finishes—they are an essential part of a building's identity, performance, and sustainability.

HOME / MAIN SLIDER

FEATURES

State of the Industry Report: Online Exclusive Edition

Sustainability and technology will drive the future of metal architecture

By Stacy Rinella
Posted February 25, 2025


Several transformative trends are shaping the future of metal architecture, with sustainability taking center stage as a key influence. The industry is responding to environmental concerns by rethinking material choices, adopting greener production methods, and considering the long-term environmental impacts of metal. Digital tools are revolutionizing design, fabrication, and workflows. At the same time, workforce challenges, such as talent shortages and evolving skill requirements, are prompting innovative training programs and recruitment strategies. Regulatory and policy changes are reshaping industry practices. Learn how these factors propel metal architecture into an exciting and rapidly evolving future.

Meet the experts:

Renee Ramey: Renee Ramey is the Executive Director of the Metal Roofing Alliance (MRA), a non-profit focused on educating homeowners and driving consumer awareness about the benefits of quality metal roofing. Renee has more than twenty-five years of experience in the metals industry.

Alan Scott: FARA, LEED Fellow, LEED AP BD+C, O+M, WELL AP, CEM. Alan Scott is an architect and consultant with more than 35 years of experience in sustainable building design. He is director of sustainability with Intertek Building Science Solutions.

Robert Tiffin: President of the Metal Building Contractors and Erectors Association (MBCEA), and the Chair of the Metal Building Manufacturers Association (MBMA) - Architects Committee. Robert is also the National Accounts Manager of Silvercote, leading foundation customer relationships in the USA and Canada.



Highlighted Video Advertiser

Introducing ALPOLI

ALPOLI

Watch Our Website

News

Metal Meets Nature: Wood Reinvented at the Microscopic Level

Athletics' ballpark shimmers beneath Las Vegas sun

Austin's trapezoid-shaped skyscraper gleams with aluminum and glass

Mountain Marvel: Utah Metal Roof Wins National Prize

Stantec to Acquire Page, a US-Based Full-Service Design, Architecture, and Engineering Firm

All News »


MBCEA Social Media Partners: Metal Coffee Shop

Thoughts on jobsite safety from MBCEA leadership, past and present


PODCASTS

32:06


In this Kooking Road Rips episode, Megan Ellsworth sits down with Sasna Uemyan and Robert Tiffin from Metal Building Contractors and Erectors Association to discuss the 56th Annual MBCEA...



MBCEA LIVE from METALCON 2024!
MetalCoffeeShop • 15 views • Streamed 6 months ago
Learn more at <https://www.metalcoffeeshop.com/> Sign up for the Week in Metal!
<https://www.metalcoffeeshop.com/sign-up> Are you a contractor looking for resources? Become an R-Club.



Robert Tiffin offers tips on how contractors can ethically integrate AI
#MBCEA #metalcoffeeshop #ai
MetalCoffeeShop • 39 views • 1 month ago



Maggie Christiansen from BRUCHA speaks about being a woman in metal construction! #MBCEA
MetalCoffeeShop • 83 views • 3 weeks ago



Monthly Influencer Topics

Podcasts

Heidi Ellsworth, Karen Edwards





Metal Building Assembly Training

Program Pledge Levels

Benefactors \$150,000

Innovators \$ 75,000

Leaders \$ 50,000

Believers \$ 25,000

Friends \$ 15,000

*Pledges may be spread over three years. For additional information or to pledge your support, see a member of leadership.
The Metal Buildings Institute (MBI) is a 501C(3) tax exempt organization IRS section 170(b)(2)(iii) for both federal and state tax purposes*

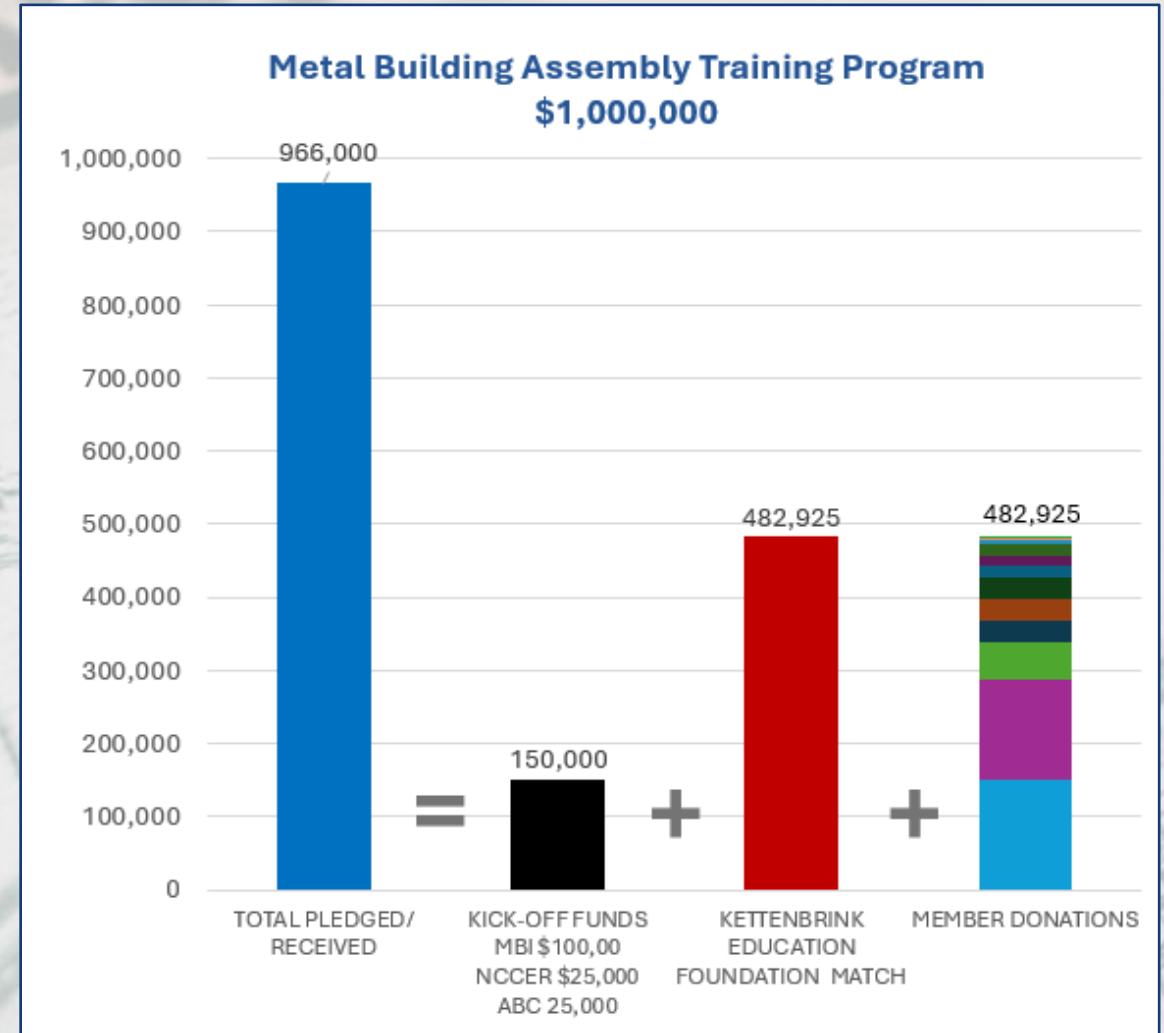
Sponsorship Update

~~\$34,000~~

\$31,500

Thank You!

Art



Member Postcard – Sponsorship Drive

Investing in Tomorrow: *Building Skills, Securing Integrity*



Our industry urgently needs accessible, comprehensive metal building assembly training, presented in a modern way, to effectively compete for skilled resources.

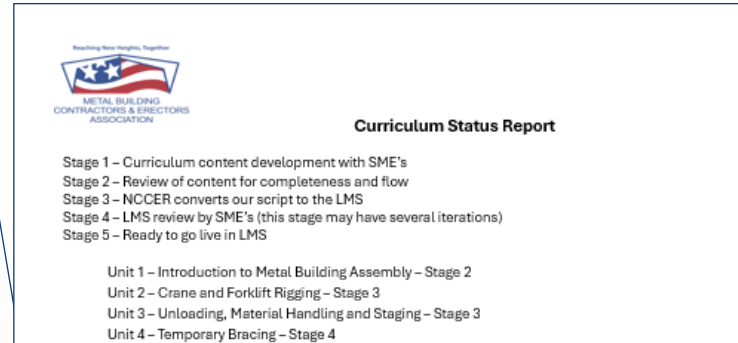
We have committed to a \$1 million multi-year investment in developing a curriculum to train the next generation of assemblers, ensuring the integrity of our projects.

Your donation is charitable. Help us with \$2,500, \$5,000 or even \$10,000?

Scan the code today and help us complete the build of this training.



Donor Letter Update



Curriculum Update

Stage	Description	Curriculum Topics
1	Curriculum content development with Subject Matter Experts (SME)	<ul style="list-style-type: none"> • Framing • Windows & Doors & Framed Openings for Exposed Fastener Wall Systems • Insulation • Exposed Fastener (Screw down) Roofs
2	Review of content for completeness and flow	<ul style="list-style-type: none"> • Intro to Metal Building Assembly • Exposed Fastener Wall Sheeting
3	NCCER converts our script to the LMS	<ul style="list-style-type: none"> • Crane and Forklift Rigging and Signaling • Unloading, Material Handling & Staging
4	LMS review by SME's (this stage may have several iterations)	<ul style="list-style-type: none"> • Temporary Bracing
5	Ready to go live in LMS	

Awaiting Staging	<ul style="list-style-type: none"> • Standing Seam Roof Trapezoidal • Roof Penetrations and Curbs • Internal Gutter & Transitions • Advanced Metal Building Assembler Training
------------------	--



@MBCEA

~~3,777~~
4,044



@MBCEA



@MBCEA

Follow, Subscribe, Join Us



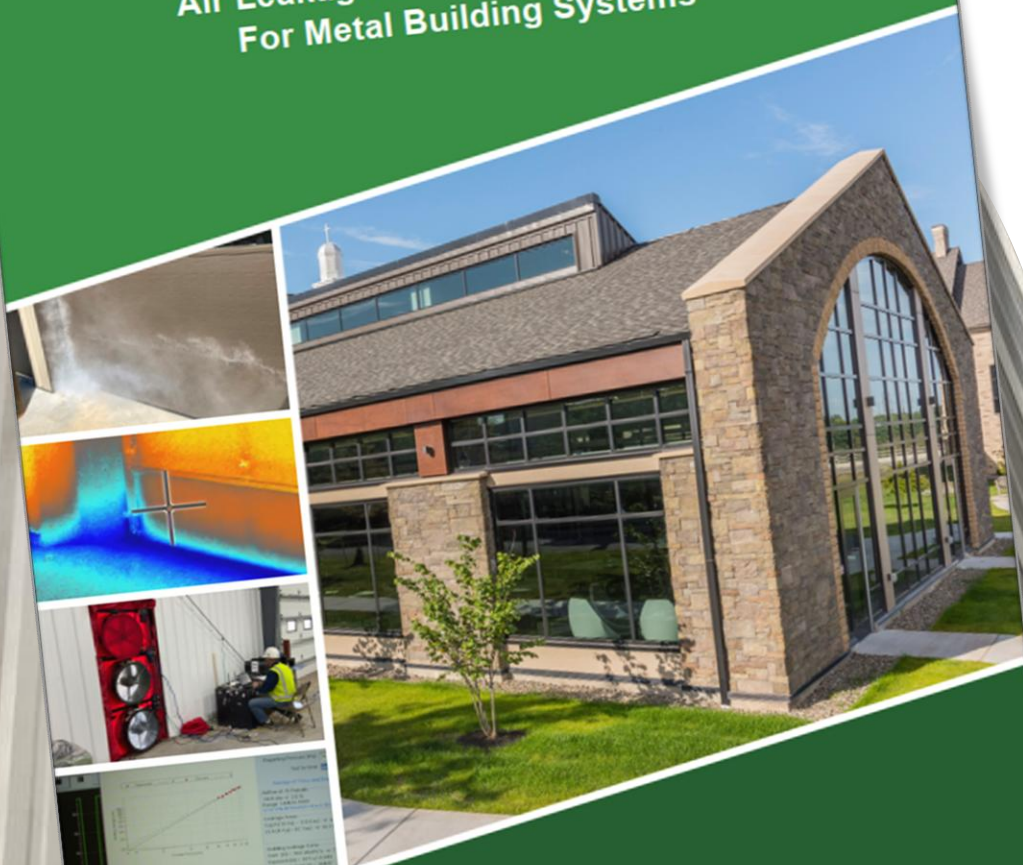
ent ▾ Products & Services ▾ Resources & News ▾ Store Codes

WEEK + HEARINGS

2025 ICC Leadership Committee Action Plan April 26 – May 6



Best Practices to Comply With Whole-Building Air Leakage Testing Requirements For Metal Building Systems



Comparison of Air Leakage Testing Requirements

Compiled by the Metal Building Manufacturers Association

To increase energy conservation, energy codes and standards have been stepping up the effort to reduce air leakage, moving toward a requirement for whole-building tests to ensure an adequate air barrier in addition to, or in place of, the prescriptive requirements for materials and assemblies. This recognizes that prescriptive requirements alone are only effective if good installation is practiced. This table below summarizes the key air leakage test requirements for multiple editions of various codes and standards of interest, including the International Energy Conservation Code (IECC), ASHRAE 90.1, state of Washington (WSEC), state of California (Title 24), and U.S. Army Corps of Engineers (COE). Several editions are included because the adoption of a particular edition varies with jurisdiction. Until mandated, whole-building air leakage testing is optional that can eliminate the need to document and install materials and assemblies that meet the prescriptive air leakage requirements and avoid inspections that evaluate whether such products were correctly installed.

	IECC			ASHRAE 90.1			WA (WSEC)		CA Title 24		COE
	2015	2018	2021	2013	2016	2019	2015	2018 ¹	2016	2019 ²	2012
Whole-Building Test Required?	Optional	Optional	Yes ³	No ⁴	Optional	Yes ³	Yes	Yes	Optional	Optional	Yes
ASTM Test(s)	E779	E779	E779 E1827 ⁵	NA	E779 E1827	E779 ⁶	E779 ⁶	E779 ⁶	E779 ⁶	E779 ⁶	COE ⁷
Pass Limit (cfm/ft ²) ⁸	0.40	0.40	0.40	0.40 ⁴	0.40	0.40	0.40	0.25	0.40	0.40	0.25
Grace Range (cfm/ft ²) ⁹	None	None	0.60	NA	0.60	0.60	Seal/no test ¹⁰	0.40 ¹¹	None	None	None
Fenestration	Yes ¹²	Yes ¹²	Yes ¹³	Yes ⁴	Yes ¹²	Yes ¹²	No	No	Yes ¹⁴	Yes ¹⁴	No
Loading Dock Vehicle Seals	Yes	Yes	Yes	Yes ¹⁵	Yes ¹⁵	Yes	Yes	Yes	No	No	No
Vestibules	Yes	Yes	Yes	Yes	Yes	Yes	Yes	Yes	No	No	Yes ¹⁶

1. Effective Feb. 1, 2021 (Note, original effective date was July 1, but this was delayed due to COVID-19).
2. Effective Jan. 1, 2020.
3. See the discussion of exceptions for each code below.
4. Even though this edition does not mention whole-building testing as an option for compliance, under fenestration, an exception indicates that if an ASTM E779 test is performed and the air leakage for the building is less than 0.40 cfm/ft², the prescriptive requirements for fenestration are waived.



ENERGY CODE COMPLIANCE

Second Edition

A Guide for Contractors

Based on: IECC 2018/2021/2024
ASHRAE Standard 90.1 – 2016/2019/2022



COMcheck™ FAQ

COMcheck™ Frequently Asked Questions for Metal Building Systems



U-Factors

Q: Why didn't anything change for the U-factor when I increased the R-value?

A: For pre-approved assemblies, COMcheck™ doesn't give additional credit for R-values above certain limits. You should have seen a "pop-up" alert that notified you of this situation. The message might have been something like, "For Metal Building, Standing Seam: Liner System with Thermal Blocks assemblies, ASHRAE Standard 90.1-2019 does not give additional credit for cavity R-values above R-47." U-factors for metal building roof and wall assemblies can be found in ASHRAE Standard 90.1-2019 Tables A2.3.3 (roofs) and A3.2.3 (walls).

Q: Where can I get U-factors for pre-approved assemblies?

A: Normative Appendix A in ASHRAE Standard 90.1-2019 has tables and other information regarding R-values and equivalent assembly U-factors for a wide variety of metal building roof and wall assemblies. Metal building assemblies are found in Tables A2.3.3 and A3.2.3. Other

construction types' roof and wall assemblies, found in other Normative Appendix A tables, can also be used. A proprietary system that is tested in accordance with ASTM C1363 (Hot Box Test) or thermally modeled can be used. Refer to ASHRAE Standard 90.1-2019 Normative Appendix A9 for requirements for all "alternative U-factors." When using such a system, use the "Other U-Factor Option" tab in COMcheck™ and insert the U-factor. A pop-up will advise you to supply the data of the U-factor used.

Q: If I enter the U-factors from Normative Appendix A from ASHRAE Standard 90.1, do I need anything more for the building official?

A: Normative Appendix A is part of the standard and therefore does not require a request for alternative means and methods to use the contents to demonstrate compliance. It will be helpful for the code official to reference the particular table or section and the specific year edition of ASHRAE Standard 90.1 as the source of the U-factors. Another option is to select an applicable system type from the drop-down menu and enter the nominal R-value for the assembly, then the building official knows that it came from

www.mbma.com

MBMA.COM MBMA.COM MBMA.COM MBMA.COM



Common Industry Practices



Fire Resistance Design Guide

METAL BUILDING SYSTEMS

Second Edition



MBMA.COM MBMA.COM MBMA.COM MBMA.COM

Maximize OpportUNITY!



METAL BUILDING
CONTRACTORS & ERECTORS
ASSOCIATION



METAL BUILDING MANUFACTURERS ASSOCIATION®
Research | Leadership | Education



Vincent Sagan • 1st

Director of Codes & Standards, Metal Building Manufacturers Associ...
7mo • 🌐

2024 MBCEA North Carolina General Contractors Continuing Education Event

I had the honor to present "Fire Protection in Metal Building Systems" at the 2024 MBCEA North Carolina General Contractors Continuing Education Event at the Chetola Resort in Blowing Rock, North Carolina on September 19, 2024. Other presenters included [Bill Beals](#) of [Therm-All](#) and [Kevin Franz](#) of the [Nucor Insulated Panel Group](#), both [Metal Building Manufacturers Association \(MBMA\)](#) members. MBMA is happy to support the [Carolinas MBCEA](#) and the [Metal Building Contractors and Erectors Association \(MBCEA\)](#). Thanks to Wade Wilson, jwWilson Co. Inc. for the invitation to speak and his patience on my below average golfing!



👍❤️🌐 28

2 comments · 1 repost



Like

Comment

Repost

Send





2:

Erection



IBC Chapter 14 Wall System Compliance Testing



Toby Kimmett

CAN YOU SPOT THE METAL BUILDING?



AIA24 Conference
on Architecture
& Design

MBMA Building Systems Members Meetings



Thank You



**DYNAMIC
FASTENER**

ReFrameTM

Stud Wall

Contest Winner



**Keith Wentworth
Jarrod Turner**

MBCEA

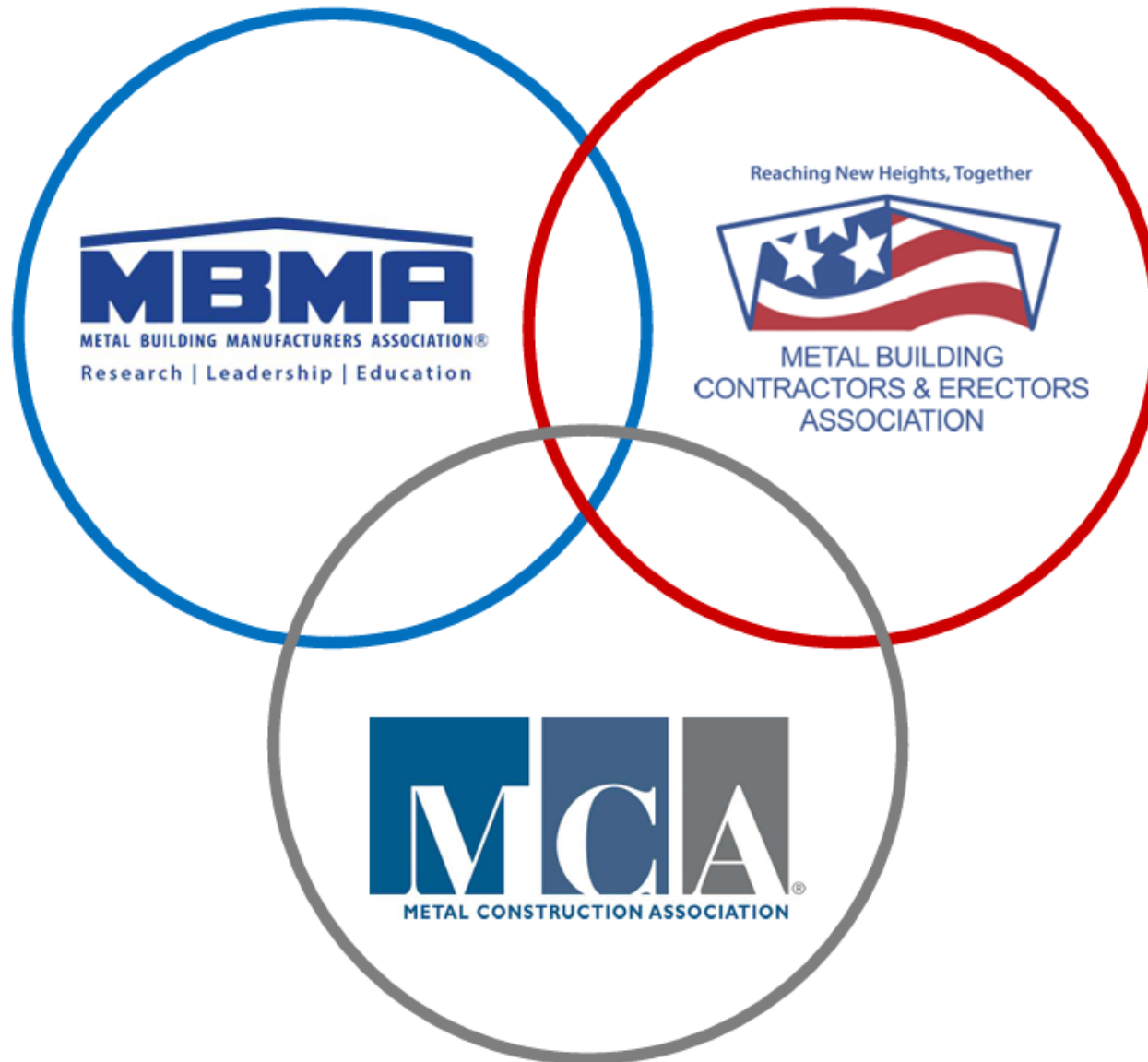
NG

MBCEA



MBCEA

Industry Collaboration



Jeff Henry, MBA, CAE
Executive Director
Metal Construction Association

Industry Collaboration

Moderated
By:



Robert Tiffin

President
MBCEA



Ken Simonson

Chief Economist
AGC of America



Keith Shuttlesworth

Chief Commercial Officer
Flack Global Metals



Ian Waddell

Regional Manager
JFE Shoji America



Tony Bouquot

General Manager
MBMA

METALCON ONLINE!



Mark Swagerty
Exhibit Sales Manager
Metalcon

Be Safe, Be Great, and

Maximize Opportunity

Thank You

