

Speech-Language Pathology Assistants:

Understanding Their Role,
the New SLPA License and
How They Can Support Student Success

Presented By :

Nancy Thul

Emily Aust

Rick Michals

Jill Freudenwald

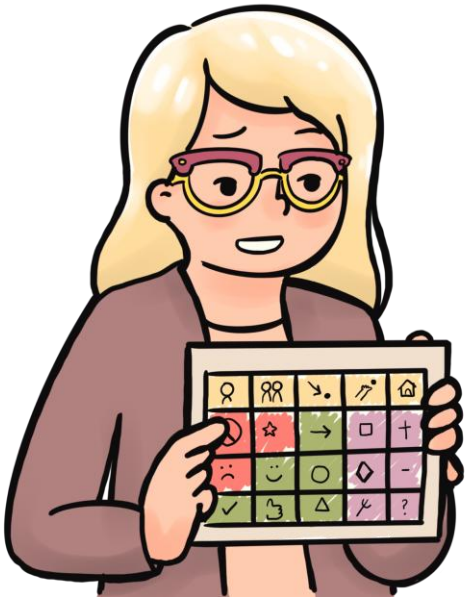
Cassandra Jantosik

Nicole Gerogeorge



NANCY THUL, MS CCC-SLP

- I HAVE BEEN AN SLP FOR 42 YEARS
- PROFESSIONAL EXPERIENCE IN THESE AREAS: B- 3, EARLY CHILDHOOD, K-21 YEARS OLD, LEVEL 4, ALTERNATIVE SCHOOL, AND AT ALOMERE HOSPITAL IN ALEXANDRIA IN BOTH IN PATIENT AND OUT PATIENT CARE
- WROTE AND DEVELOPED THE SLPA PROGRAM AT ATCC IN 2012 THAT LAUNCHED IN 2013
- 2013 TO 2025 – LOBBIED AT THE CAPITAL FOR SLPA LICENSURE
- DEVELOPED AND LAUNCHED THE SLPA CERTIFICATE PROGRAM IN 2015
- CURRENTLY AND IN THE PAST, SERVED ON SEVERAL ASHA BOARDS THAT WERE DEVOTED TO CREATING VARIOUS DOCUMENTS AT A NATIONAL LEVEL FOR SLPA'S I.E. ASHA SLPA SCOPE OF PRACTICE, SLPA NATIONAL CERTIFICATION EXAM



EMILY AUST, EdS CCC-SLP



- SLP FOR 20 YEARS
- CURRENT MNSHA Past President 2026 & CO-CHAIR OF MNSHA'S ADVOCACY AND GOVERNMENTAL AFFAIRS COMMITTEE
- WORKED ACROSS ALL AGES AND SETTINGS
- SUPPORTED SLPA INTERNS AND SLPAS IN THE EDUCATIONAL SETTING FOR 5+ YEARS



CASSANDRA JANTOSIK, AAS, SLPA

SLPA

Speech-Language Pathology
Assistant

- DEVELOPED AN INTEREST IN BECOMING AN SLPA AFTER WORKING AS AN EDUCATION ASSISTANT IN A LEVEL 4 SETTING AND WITNESSING THE IMPACT SLPs HAD ON STUDENT SUCCESS
- GRADUATED WITH AN ASSOCIATES DEGREE IN SPEECH-LANGUAGE PATHOLOGY ASSISTING FROM ALEXANDRA TECHNICAL & COMMUNITY COLLEGE IN 2023
- 3 YEARS EXPERIENCE AS AN SLPA WORKING WITH K-12 STUDENTS
- BILINGUAL (ENGLISH-SPANISH)
- EXPERIENCE COVERING A MATERNITY LEAVE, DEMONSTRATING FLEXIBILITY AND INDEPENDENCE

NICOLE GEROGEOGE, C- SLPA



Speech Language Pathologist Assistant

- RECEIVED MY BACHELOR'S DEGREE IN COMMUNICATION SCIENCE AND DISORDERS FROM ST. CLOUD STATE UNIVERSITY BACK IN 2019
- DURING MY TIME IN UNDERGRAD, I WAS A MEMBER OF THE NATIONAL STUDENT SPEECH LANGUAGE HEARING ASSOCIATION (NSSLHA) RECOGNIZED BY ASHA
- I WORKED AS A REGISTERED BEHAVIOR TECHNICIAN (RBT) FOR 4 YEARS PROVIDING SERVICES TO CLIENTS AGES 2-21 YEARS OLD
- DISCOVERED THAT MN HAD A SLPA PROGRAM THROUGH ALEXANDRIA COLLEGE. THEN DECIDED TO CONTINUE MY EDUCATION AND PASSION FOR SPEECH
- SUCCESSFULLY COMPLETED 2 INTERNSHIPS AND GRADUATED FROM THE PROGRAM ON MAY 13TH



JILL FREUDENWALD

Jill Freudenwald has worked for the State of Minnesota since 2010. Prior to that, she worked in Washington DC in government affairs. In 2022, Jill began working at the Minnesota Department of Health as an Agency Policy Specialist coordinating legislation in the Health Regulation Division. In 2025, Jill became a Licensing Supervisor overseeing speech-language pathologists and SLP assistants. Jill has a M.A. from George Washington University in Legislative Affairs and a B.A. from St. Olaf College in Political Science.

RICK MICHALS

Rick Michals has been with the Minnesota Department of Health, Health Regulation Division, for approximately 8 years. He has been in his current role of Executive Regional Manager for 2 years. In this role, he works with the HRD Operations group consisting of the Licensing, Enforcement, Case Mix, Intake, and Administrative Supports Teams. He has a J.D. from the University of St. Thomas School of Law and a B.S. from Iowa State University.

BACKGROUND

Effective July 1, 2025, Minnesota licenses Speech Language Pathology Assistants through the **Minnesota Department of Health**

- SLPA is a protected title.
- Must be supervised by a SLP who is licensed through MDH or PELSB.
- Must meet the educational requirements of the SLPA

> [148.5181 LICENSURE](#)

> [ASHA FAQ on SLPAs](#)

> [PELSB Announcement](#)



Difference in duties between MDH SLPA Licensure and Tier 2 SLP PELSB Licensure

MDH SLPA license:

1. An individual functions as an assistant.
2. Statutory supervision requirements apply.
3. Scope is limited to delegated duties.

Tier 2 SLP license through PELSB:

1. An individual functions as an SLP in a school setting.
2. Not classified as an SLPA.
3. MDH SLPA license requirement does not apply.
4. An individual may perform SLP functions consistent with PELSB authority, subject to district assignment and licensure limitations.





SCOPE OF PRACTICE



> SLPS

- Conducts evaluations.
- Interprets assessment data.
- Determines disability and eligibility under IDEA.
- Develops IEP goals and service recommendations.
- Designs treatment plans.
- Delegates appropriate tasks.
- Retains full clinical and legal responsibility.

> SLPAS

- Implements treatment plans designed by the SLP.
- Delivers therapy activities as delegated.
- Collects and records data.
- Documents sessions.
- May not evaluate, diagnose, determine eligibility, or independently modify treatment plans.
- Functions only under required supervision.

Statutorily, the supervising SLP must authorize and accept full responsibility for the SLPA's performance, practice, and activity.

SUPERVISION

REQUIREMENTS

- Initial introduction to a client with the speech-language pathologist and speech-language pathology assistant present.
- Once every 60 days, the supervising speech-language pathologist must treat or cotreat with the speech-language pathology assistant each client on the speech-language pathology assistant's caseload.
- A full-time, speech-language pathologist may supervise no more than two full-time, speech-language pathology assistants or the equivalent of two full-time assistants.
- Supervision can be provided via telepractice but the SLP needs to be licensed within the state of MN.
- SLP must have completed at least ten hours of continuing education in supervision.



> [148.5181 LICENSURE](#)

> [ASHA FAQ on SLPAs](#)

> [148.5192 SLPA SUPERVISION](#)

COMMON QUESTIONS

- HOW MANY SHOULD BE ON THE SLP'S CASELOAD IF THEY SUPERVISE AN SLPA?
- WHAT DOES IT MEAN TO USE PROFESSIONAL JUDGEMENT WHEN SUPERVISING AN SLPA?
- CAN AN SLPA COMPLETE WORK WITHIN SPED FORMS?
- CAN AN SLP SUPERVISE MORE THAN ONE SLPA?
- WHO CAN THE SLPA TREAT AND HOW MANY SHOULD THEY BE ASKED TO SEE?
- CAN AN SLPA ATTEND IEP MEETINGS?
- CAN SLPA CAN WRITE THEIR OWN PROGRESS NOTES?
- CAN SLPA COMPLETE MA BILLING?
- CAN SLPA CAN SCRIBE FOR THE SLP SUPERVISOR (I.E. HELP WITH IEP'S AND EVALUATIONS AND THIRD PARTY BILLING)?
- CAN SLPA CREATE THEIR OWN SCHEDULE?
- CAN A SLPA CAN COMPLETE SCREENINGS?
- CAN SLPA CAN KEEP TRACK OF SUPERVISION REQUIREMENTS?



ALEXANDRIA
Technical & Community **COLLEGE**

SLPA EDUCATIONAL REQUIREMENTS

RE

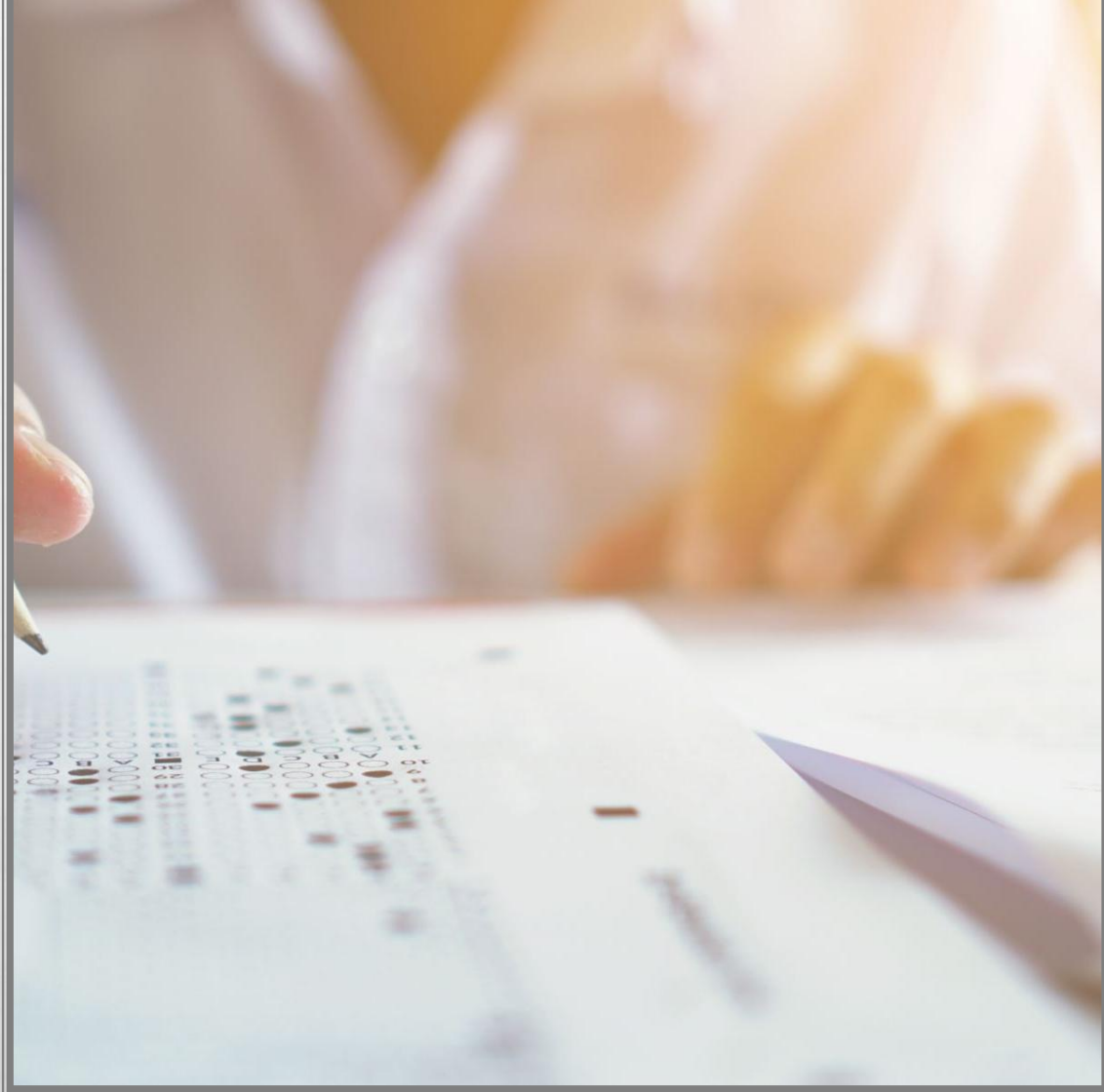


2-YEAR ASSOCIATE OF ARTS SLPA DEGREE

- [HTTPS://WWW.ALEXTECH.EDU/P
ROGRAMS/SPEECH-LANGUAGE-
PATHOLOGY-
ASSISTANT/CURRICULUM](https://www.alextech.edu/programs/speech-language-pathology-assistant/curriculum)

SLPA CERTIFICATE PROGRAM

- [HTTPS://WWW.ALEXTECH.EDU/PROGRAMS/SPEECH-LANGUAGE-PATHOLOGY-ASSISTANT/CURRICULUM](https://www.alextech.edu/programs/speech-language-pathology-assistant/curriculum)



HOW CAN AN SLPA OBTAIN THE MDH LICENSE?

Educational Requirements

- an associate's degree from a speech-language pathology assistant program that is accredited by the Higher Learning Commission of the North Central Association of Colleges or its equivalent as approved by the commissioner and that includes at least 100 hours of supervised field work experience in speech-language pathology assisting

OR

- a bachelor's degree in the discipline of communication sciences or disorders and a speech-language pathology assistant certificate program that includes:
 - coursework in an introduction to speech-language pathology assisting, adult communication disorders and treatment, speech sound disorders, and language disorders at a speech-language pathology assistant level
 - at least 100 hours of supervised field work experience in speech-language pathology assisting



HOW CAN AN SLPA OBTAIN THE MDH LICENSE?

FIRST TIME SLPA LICENSE APPLICATANTS:

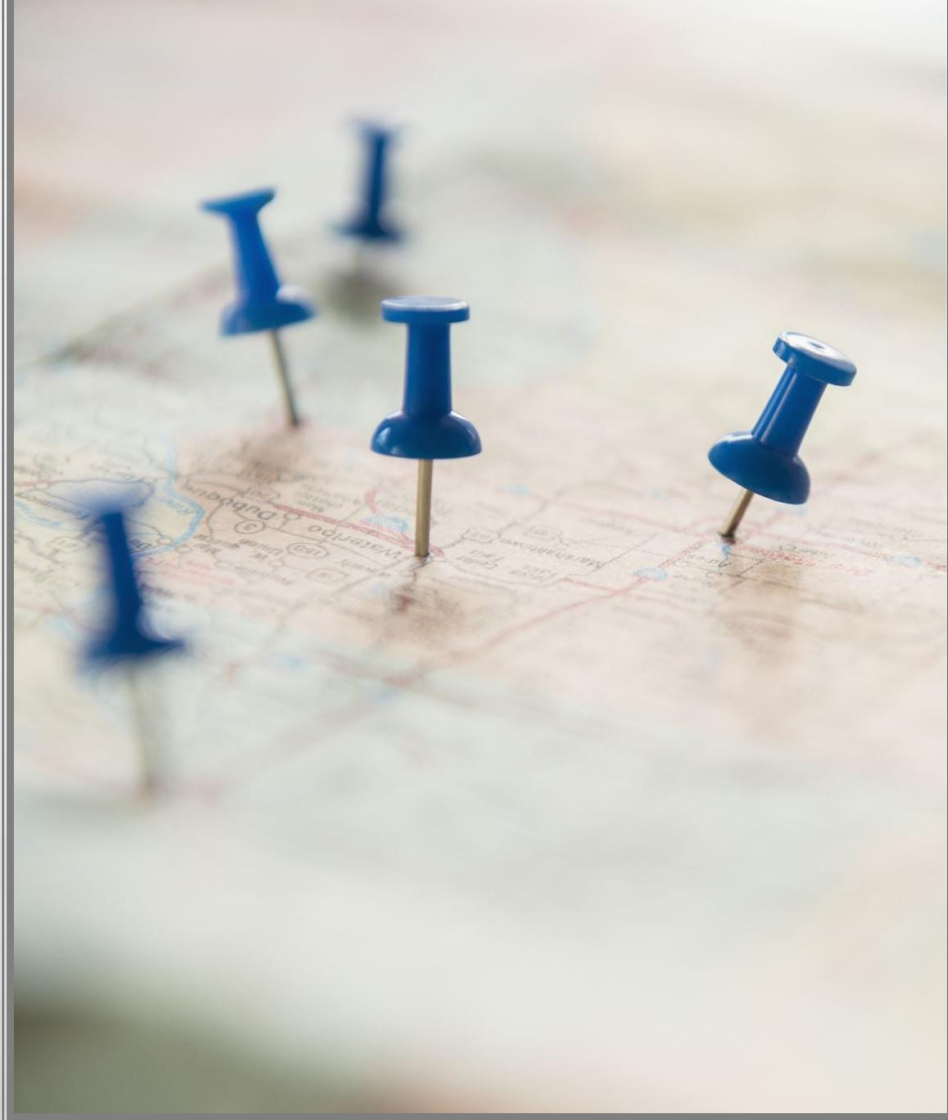
1. BE OFFERED A JOB
2. BE ASSIGNED A SUPERVISOR
3. THEN APPLY FOR THE LICENSE AND SUBMIT ALL OF THE FORMS AND PAYMENT. [HTTPS://MN-MDH.PORTAL.OPENGOV.COM/CATEGORIES/1095/RECORD-TYPES/6592](https://mn-mdh.portal.opengov.com/categories/1095/reco-rd-types/6592)

RENEWED EVERY TWO YEARS.

- 20 CEU'S ARE ALSO REQUIRED FOR RENEWAL.

IF THEY ALREADY HAVE A LICENSE, THIS FORM NEEDS TO BE FILLED OUT AND SUBMITTED TO MDH TO NOTE THE CHANGE IN SUPERVISORS:

[HTTPS://WWW.HEALTH.STATE.MN.US/FACILITIES/PROVIDERS/SLPA/DOCS/SLPASSISTSUPV.PDF](https://www.health.state.mn.us/facilities/provide-rs/slpa/docs/slpassistsupv.pdf)



HOW TO FIND OUT IF AN SLPA IS LICENSED

- [HTTPS://WWW.HEALTH.STATE.MN.US/FACILITIES/REGULATION/DIRECTORY/PROVIDERSEARCH.HTML](https://www.health.state.mn.us/facilities/regulation/directory/providersearch.html)

WORDING FOR A POSTED SLPA JOB

1. 2-YEAR AAS DEGREE IN SLPA –OR–
2. BS/BA DEGREE IN SPEECH LANGUAGE HEARING SCIENCES *PLUS* COMPLETING THE COURSEWORK THAT IS PART OF AN SLPA CERTIFICATE PROGRAM
3. A BS/BA DEGREE IN ANOTHER AREA *AND* COMPLETION OF AN SLPA 2-YEAR AAS DEGREE
4. AN SLPA STUDENT CANNOT BE WORKING AS AN SLPA WHILE THEY ARE OBTAINING THEIR DEGREE.
5. BE CAREFUL WHEN LISTING THAT THEY NEED TO BE A LICENSED SLPA. SOME MAY HAVE JUST GRADUATED AND CAN'T YET APPLY FOR THE LICENSE. (SEE SLIDE 7)
6. IT WOULD BE BETTER TO SAY; *BE ELIGIBLE FOR MDH LICENSURE IN MN
7. NO SLPA PROGRAM IN THE UNITED STATES ARE ACCREDITED AS OF YET. COLLEGES ARE ACCREDITED BUT NOT SLPA PROGRAMS
8. NOTE THAT SLPA'S ARE NOT REQUIRED TO TAKE THE ASHA NATIONAL EXAM IN ORDER TO WORK AS AN SLPA IN THE STATE OF MINNESOTA. IT SHOULD NOT BE LISTED IN A JOB POSTING.

EDUCATIONAL OPTIONS THAT **CANNOT BE** ACCEPTED FOR LICENSURE OR AN SLPA JOB

ASHA MODULES

BS DEGREE IN SLHS ONLY

SLPA IN ANOTHER STATE?

- MANKATO
- ST CLOUD
- DULUTH
- MOORHEAD
- U OF M

PLEASE NOTE THAT EACH STATE HAS DIFFERENT CRITERIA FOR SLPA'S. SOME STATES ARE NOT VERY STRINGENT.

OTHERS DON'T REQUIRE A LICENSE OR THEY MAY USE WORDS LIKE CREDENTIALLED OR REGISTERED

SLPA GRADUATE NUMBERS

- WE WILL GRADUATE 42 SLPA'S THIS SPRING. THIS INCLUDES BOTH 2-YEAR AAS STUDENTS AND CERTIFICATE STUDENTS.
- WE HAVE, SO FAR, 30 ENROLLED IN THE 2-YEAR AAS SLPA PROGRAM FALL COHORT AND 27 PENDING.
- WE CURRENTLY HAVE 13 CERTIFICATES STUDENTS ENROLLED IN THE FALL COHORT AND MORE WILL BE APPLYING AS THEY FIND OUT THEIR STATUS REGARDING GRADUATE SCHOOL.

CONSIDER “HOME GROWING” AN SLPA!

- BOTH ATCC PROGRAMS ARE ONLINE. THE ONLY IN PERSON PIECE IS THE TWO INTERNSHIPS COMPLETED WITHIN THE SECOND YEAR OF THE AAS PROGRAM AND WITHIN THE TWO SEMESTERS OF THE 16 CREDIT CERTIFICATE PROGRAM.
- THE AVERAGE AGE OF OUR STUDENTS IS BETWEEN THE AGES OF 30-55 YEARS OLD. MOST ARE RETURNING ADULTS.
- PARA’S MAKE GOOD SLPA’S!



SUPPORTING
STUDENT
SUCCESS WITH
SLPAS



NICOLE

Things I did to support my supervising SLP during my internship:

- Make/Prep materials needed for sessions
 - Ex. I made Picture Exchange Communication System (PECS) folders for non-verbal students if they did not have a Speech Generated Device (SGD)
- Provide direct treatment plans as developed by the SLP
- Provide services to students 1:1 or in group settings
- Conduct Speech-Language screenings without interpretation
- Document student progress towards their goals and objective.
 - **Fluent in SLP Toolkit and SLP Now**
- Summarize therapy notes and calculate percentages
- Assist in AAC Support: Helping setup student's personal devices or teaching students to utilize their AAC devices independently. **Fluent in TD Snap and Proloquo2go**
- Assist in schedule making
- Clerical duties: scan documents, compiling paperwork for IEP meetings, updating SpedForm (Client Files)



CASSANDRA

Things I did to support my supervising SLP:

- Created materials to support speech therapy sessions
- Provided direct and indirect speech therapy services
- Developed and modified speech therapy schedules based on student needs
- Collected and organized data to track progress and support the SLP in selecting new goals/objectives for IEPs
- Attended IEP meetings
- Assisted with AAC setup, modeling, and use
- Completed clerical duties and filing of documents
- Prepared an easy to read document listing IEP and Re-evaluation due dates



THANK YOU!

MORE QUESTIONS? CONTACT US AT:

MN SPEECH-LANGUAGE-HEARING ASSOCIATION

office@mnsa.org

MN DEPARTMENT OF HEALTH- SLPA

health.slpa@state.mn.us

ALEXANDRIA TECHNICAL & COMMUNITY COLLEGE

Nancy Thul <NancyT@alextech.edu>

