

A Work-Based Learning *Roundtable*



<https://bit.ly/MASEWBL2026>

Meaningful Experiences, AI and the Path to Post-Secondary Success

Noelle Meyer - CTE Connections Liaison, Dakota County Perkins Consortium
Jessica Yzermans - Work Experience Coordinator, Northeast Metro 916 Intermediate School District
Jill Stewart-Kellar - Director of Career and College Readiness-Minnesota Twin Cities Intermediate School Districts



Intros & Networking:

- How this session came to be...
- Who are you? (name/school or district/role)
 - How long have you been in this role?
- One "win" your WBL program had this year...



Special Education WBL Challenges

- Resources
- Funding
 - Staffing
 - Transportation
- Employers
- AI
- and....



Special Education WBL Successes

- Resources
- Funding
 - Staffing
 - Transportation
- Employers
- AI
- and....



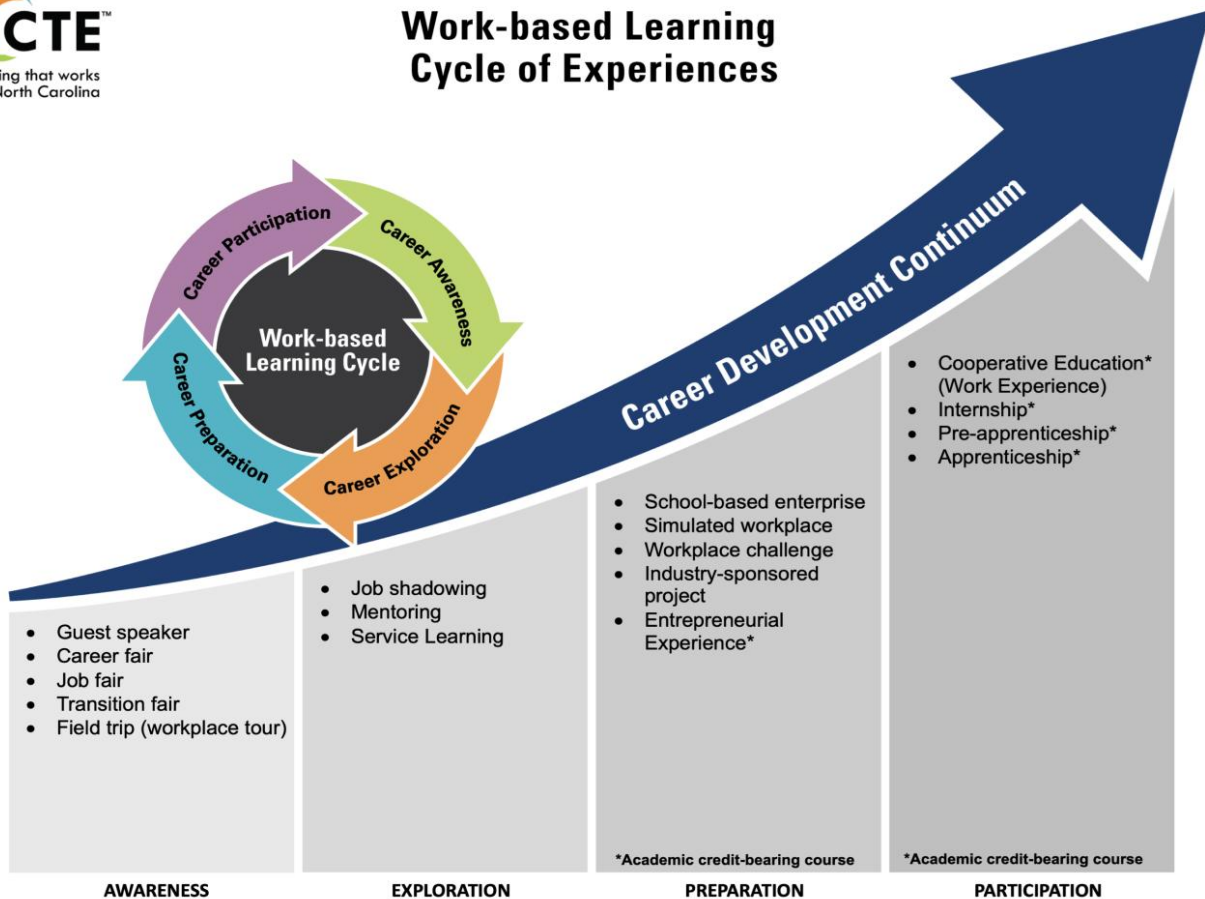
Secret Weapons/Tools



<https://bit.ly/MASEWBL2026>



Work-based Learning Cycle of Experiences



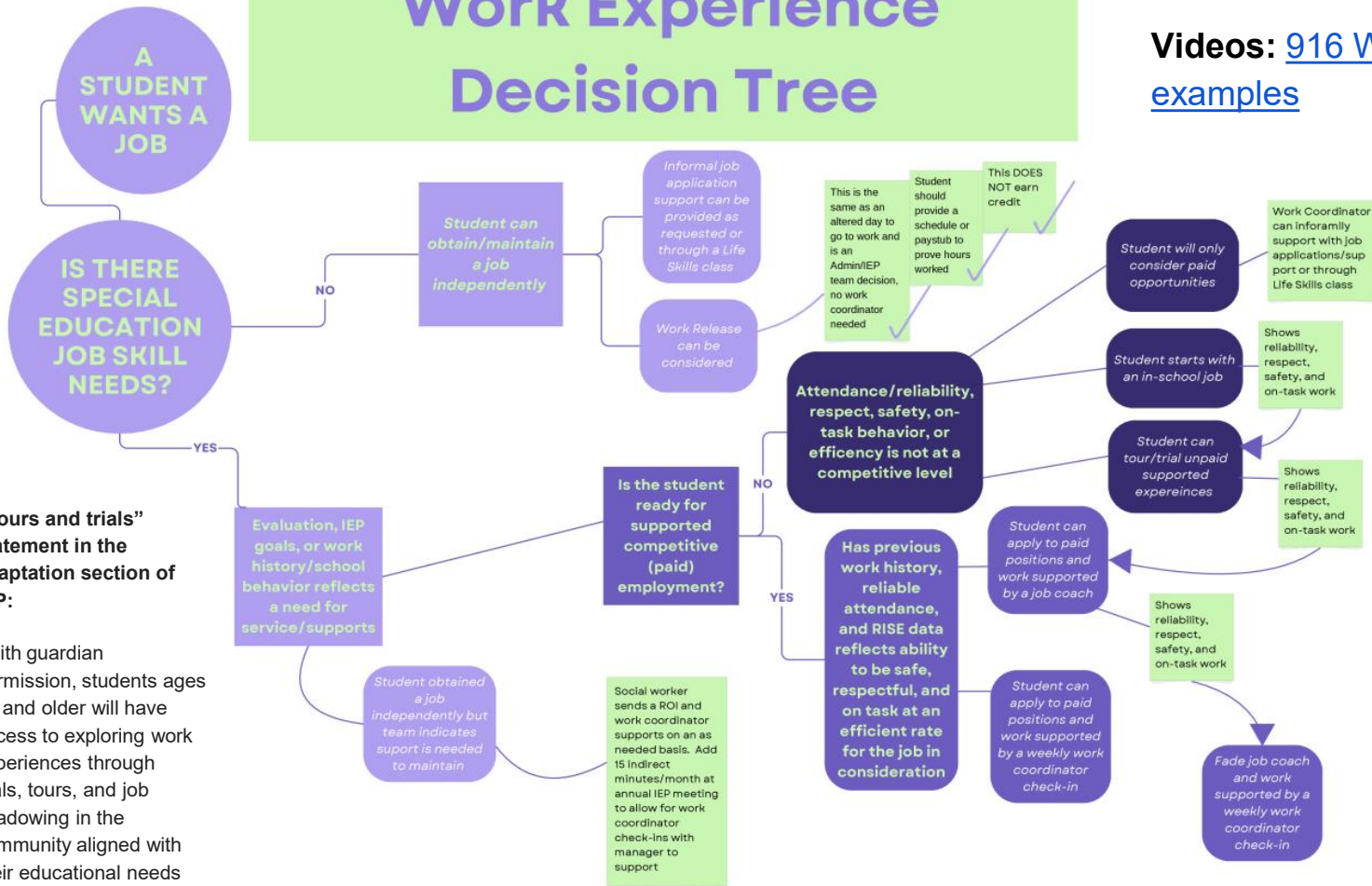
Noelle's
Secret
Weapon



SY.

Work Experience Decision Tree

Videos: [916 Work Experience examples](#)



Jessica's Secret Weapon



[Canva Link](#)

“Tours and trials” statement in the adaptation section of IEP:

“With guardian permission, students ages 14 and older will have access to exploring work experiences through trials, tours, and job shadowing in the community aligned with their educational needs and post-secondary goals”

AI Discussion

How are we coaching students for AI-screened resumes or video interviews?

What does "Digital Professionalism" look like now?



Next Steps/Actions



Secret Weapons/Tools Folder

A Work-Based Learning Roundtable

Meaningful Experiences, AI and the Path to Post-Secondary Success

Noelle Meyer noelle.meyer@isd917.org

Jessica Yzermans jyzerman@916schools.org

Jill Stewart-Kellar jstewart@916schools.org



slides

<https://bit.ly/MASEWBL2026>

