



The Only Informational Resource
for Michigan Physician Assistants

Michigan PA

Michigan Automated Prescription System

The Michigan Automated Prescription System (MAPS) is a monitoring program for entering, managing, and reporting Schedule II-V prescription data. All Schedule II-V prescription data is required by Michigan law to be reported by all dispensers which are then validated by the state of Michigan. This unique tool, which was created for all practitioners to use with a valid NPI number, can highly affect patient care for the better.

This program is used to help identify and prevent drug diversion at the provider, pharmacy and patient levels. There are many instances in which multiple providers are prescribing scheduled medications to the same patient without other's knowledge. MAPS is meant to be utilized to prevent this from happening. Whether you are seeing a patient for the very first time, having a patient ask early for refills, or even if your patient is asking for a specific narcotic medication by name and strength, these are all valid and appropriate instances to perform a MAPS inquiry.

Continued on page 12

What's Inside

Ron Nelson, PA-C
p. 6

**Fall Conference
Announcement**
p. 8 - 9

MDCH Tool
p. 13

MAPA BOARD OF DIRECTORS

PRESIDENT

Brian Gallagher, PA-C

PRESIDENT-ELECT

Ron X. Stavale, PA-C

IMMEDIATE PAST PRESIDENT

Suzanne York, PA-C, MPH

SECRETARY

Heather Klopp, PA-C

TREASURER

Jay Kaszyca, PA-C

REGION 1 REPRESENTATIVE

Amber Gustafson, PA-C

REGION 2 REPRESENTATIVE

Kevin Brokaw, PA-C

REGION 3 REPRESENTATIVE

Tom Plamondon, PA-C

REGION 4 REPRESENTATIVE

R. David Doan, III, PA-C

REGION 5 REPRESENTATIVE

Marcos A. Vargas, PA-C, MSA

REGION 6 REPRESENTATIVE

Jenny Grunwald, PA-C

EXECUTIVE DIRECTOR

Mike DeGrow

ACADEMY ADMINISTRATOR

Tammy Soule

MAPA COMMITTEE CHAIRPERSONS

CONTINUING MEDICAL EDUCATION

Chris Noth, PA-C

REIMBURSEMENT

James Kilmark, PA-C

MEMBERSHIP

William Palazzolo, PA-C

POLITICAL ACTION COMMITTEE

Ron X. Stavale, PA-C

COMMUNICATIONS

James Berg, PA-C and

Jenny Grunwald, PA-C

LEGISLATIVE

Gregor Bennett, PA-C

PUBLIC EDUCATION & RELATIONS

Christine Oldenburg-McGee, PA-C

STUDENT ADVISOR

Christine Oldenburg-McGee, PA-C

NEWSLETTER EDITOR

Chris Noth, PA-C



Michigan Academy of Physician Assistants
120 W. Saginaw Street
East Lansing, MI 48823
Toll Free: 877-YES-MAPA
Phone: 517-336-1498
Fax: 517-336-5797
E-mail: mapa@michiganpa.org
Website: www.michiganpa.org

CONTENTS

Features

4 MAPA's New Logo!

6 'Pioneer' Ron Nelson

8 PrePAre for Fall-
CME Conference Alert

Departments

PROFESSIONAL SERIES

7 CMU Class Updates

12 MAPS- 'What Every PA
Should Know'

11 MI PA Foundation
Celebration

14 Update on Senate Bill
384

PRIMARY CARE SERIES

13 MDCH Hereditary Cancer Risk Tool

COMMUNITY SERVICE SERIES

10 Fall Conference Charity- 'Camp
Quality'

MAPA's Mission

The Michigan Academy of Physician Assistants is the essential resource for the Physician Assistant profession in Michigan and the primary advocate for PAs in the state.

MAPA's Vision

The Michigan Academy of Physician Assistants is committed to providing quality, cost-effective, and accessible health care through the promotion of professional growth, enhancement of the PA practice environment, and preservation of the PA/physician team concept.



President's MESSAGE

Brian M. Gallagher, MSPA, PA-C

You Spoke, We Listened

Last year, the Michigan Academy of Physician Assistants (MAPA) Membership Committee conducted a survey of all MAPA members to determine satisfaction with MAPA membership benefits and in what areas MAPA can improve. Overall, 86.5% of the respondents were satisfied with the current level of benefits. However, the MAPA website and additional PA legislation to reduce the barriers in the physician / PA team were the two areas that we needed to improve.

A survey was also sent to PAs who were not current members of MAPA to identify their reason for not being a member and asking how MAPA could get them to join. The main reasons given for not being a MAPA member were cost, thinking they were already a member or they simply forgot to renew.

The MAPA Board of Directors (BOD) and its committees have worked diligently to resolve the above issues. Next month at the Fall CME Conference at Grand Traverse Resort, the MAPA will unveil a brand new, totally renovated, visually appealing, easy to navigate, functional and relevant website. This will make it easier to find information about the physician assistant profession in Michigan, improve the functionality of the website for members and increase PA awareness to the public.

Over the last 12 months MAPA has partnered with the Michigan State Medical Society and the Michigan Osteopathic Association to create the Michigan Patient Access to Care and Safety Initiative, which resulted in the drafting of Senate Bill 384. This key legislation will significantly reduce the barriers in the physician/PA team, will increase access to care and improve patient safety for the citizens of Michigan. The bill unanimously passed the Senate and is waiting to be taken up by the House Health Policy Committee in the fall.

From the non-member survey, the Membership Committee has created and implemented the most comprehensive and innovative membership recruitment and retention plan that MAPA has ever seen. They have improved communication to members via monthly email updates, encouraging better communication from our management organization to our members and personal outreach. The entire BOD and management staff are working hard to assure all members are retained. In order to recruit new Fellow members, or former members who have not had an active membership over the last six months a coupon for \$75 off your membership dues is enclosed in this newsletter. MAPA is also focusing on student members to assure they convert from student to fellow at the time of graduation.

The work that the current BOD and committees are doing is nothing short of spectacular. I am honored to be part of that team. We thank the current members of the MAPA for their support of the organization. Without our members, we would not have MAPA. For those contemplating joining, please do not hesitate to contact me or any other board member with questions. We welcome the opportunity to speak with you and look forward to you joining the outstanding organization that is the Michigan Academy of Physician Assistants.

*The work
that the
current
BOD and
committees
are doing
is nothing
short of
spectacular.*

Brian M. Gallagher, MSPA, PA-C
MAPA President 2011 - 2012

new



Have you noticed...? MAPA has a new logo!

MAPA has decided to refresh its logo and distinguish it from other state PA academies with a similar acronym. The outer ring of text remains the same and an outline of the state of Michigan has been added as a backdrop to the inner circle. While we wanted to refresh our logo, we also did not want to alter this recognizable brand too drastically. You will see us utilizing this updated logo on all new correspondences and promotional items. This is just one of the many exciting changes MAPA has made over the last year.



readiness

DMC has been a national leader in the recruitment and utilization of Physician Assistants for more than 30 years. DMC has set the highest standards for collaboration among health care professionals, working closely with major academic institutions as a primary teaching site for the Physician Assistants of the future. As a Physician Assistant at DMC, you will collaborate with world-class physicians, use cutting-edge technology and help pioneer new research and treatments.

To learn more, please join us for a DMC Reception at MAPA's Fall Conference on Friday, October 14, 2011, from 4:00 p.m. - 6:00 p.m. in the Conference registration area outside of Governors Hall AB.

For additional information, please contact Athena Hinojosa at (313) 578-3989 or ahinojos@dmc.org.

DMC CHILDREN'S HOSPITAL OF MICHIGAN
DMC DETROIT RECEIVING HOSPITAL
DMC HARPER UNIVERSITY HOSPITAL
DMC HURON VALLEY-SINAI HOSPITAL
DMC HUTZEL WOMEN'S HOSPITAL

DMC
DETROIT MEDICAL CENTER

always there.

DMC REHABILITATION INSTITUTE
OF MICHIGAN
DMC SINAI-GRACE HOSPITAL
DMC SURGERY HOSPITAL
DMC CARDIOVASCULAR INSTITUTE

Pledging... Compassion, Caring, Commitment, Community.

dmc.org/pajobs

Call for Abstracts/Posters

In conjunction with the Michigan PA Foundation, MAPA will again have an Abstract/Poster session run concurrently with the MAPA Fall CME Conference. At the 2011 MAPA Fall CME Conference, which will be held at the Grand Traverse Resort & Spa in Traverse City, we will again accommodate Abstracts/Posters for presentation and exhibition.

General Guidelines for Abstract/Poster presentation and necessary forms are available on MAPA's website. The deadline for submission of an Abstract/Poster is September 16, 2011, to the MAPA office.

MAPA will be launching their new website, next month... www.michiganpa.org

The screenshot shows the MAPA website with the following sections and annotations:

- Header:** MAPA logo and navigation links (Home, Join, Contact Us, Site Search, Members Login).
- Navigation Bar:** About MAPA, Member Center, Career Center, About PAs, Conferences/CME, For Employers.
- Image Strip:** A row of six images showing healthcare professionals. An annotation "Locate upcoming CME Events" points to the "Conferences/CME" link and the image strip.
- Calendar:** A section titled "CALENDAR" with a list of events:
 - SEP 17: MAPA Strategic Planning/Board Retreat
 - OCT 13: MAPA 2011 Fall CME Conference
 - OCT 13: MAPA Board Meeting
 An annotation "PA/Practice issues and answers" points to the "About PAs" link and the "MAPA 2011 Fall CME Conference" event.
- Fall CME Conference:** A large banner for the "Fall CME Conference" held at the Grand Traverse Resort and Spa from October 13-16. An annotation "Join MAPA, pay dues, PA students, archived newsletters" points to the "Join" link and the conference banner.
- Michigan Academy of Physician Assistants:** A section with a description of the organization's mission and history.
- MAPA News:** A section with news articles. An annotation "Easy access to Calendar of events" points to the "CALENDAR" link and the "MAPA News" section.
- Thank You To Our Sponsors:** A section listing sponsors and their contribution levels.
- Other Places of Interest:** A section with links to other relevant websites.
- Rolling Banner of MAPA Features:** A section with a banner for "MAPA News is posted Here".
- And the winners are... 2011-2012 Election Results:** A section listing the winners of the 2011-2012 election, including the President Elect, Secretary, Region representatives, and delegates.

Remembering a Pioneer

As many of you have heard, on June 11th we lost a visionary, pioneer, advocate and friend to many, Ron L. Nelson, PA-C.

Ron lived the last days of his life battling valiantly against an aggressive foe, stage IV colon cancer. During this time, Ron never lost his vision and passion for people and the PA profession.

We at MAPA wanted to pay tribute to someone who was so influential in our profession and lived to help the advancement of our profession, not for us, but for our patients.

Ron was born in Grant, Michigan, and raised on a farm with his four brothers. It was here where he developed his strong work ethic and love of horses. He worked at Grant Hospital in many areas, and it was there he would receive his training to be a Physician Assistant. He would later earn a Master's of Science degree from Ferris State University.

Ron practiced the art of medicine in Grant and various surrounding rural communities. His passion was for his patients and their health. He had a special affinity for the Amish in the area, taking care of thousands over his career; he was their health care. It was not uncommon for Ron to set fractures and perform minor surgery in exchange for a cabinet or some other good or service. He was avidly devoted to the Amish community. Ron's desire to help those in rural areas translated into his development and active participation in the Michigan Association of Rural Health Clinics and served as its Executive Director. He helped start many rural health clinics and practices throughout Michigan and across the country. He helped establish the National Association of Rural Health Clinics and continued to serve in its leadership.

For the last number of years, Ron lent his expertise to the education field. He joined the faculty at Central Michigan University and also spent time precepting students from CMU, GVSU and WMU. He did this while maintaining a full patient load at the clinic where he practiced and continuing to offer his seemingly endless knowledge in other leadership roles. Ron's leadership is exemplified by his roles in the professional organizations. He served as president of MAPA from 1983-1984 and twice as president of AAPA. Ron was founder and president of Health Service Associates and was a recognized leader in reimbursement. He was appointed by the Governor of Michigan to sit on the Michigan Board of Osteopathic



Medicine, as well as by President George W. Bush, to serve on

the National Advisory Committee on Rural Health & Human Services. For his leadership and guidance, Ron received countless awards and recognitions, including but not limited to: Michigan Outstanding PA of the Year (twice), Michigan Rural Health Clinic Annual award and MAPA's President's award, just to name a few.

Ron's love was helping others and especially those within the profession; he was a consummate motivator for so many. Countless leaders in this profession owe their start to Ron Nelson. Here are some comments from these leaders:

"If there ever was an exemplar of the first generation of PAs – those trained in the 1970s who entered the profession amid the struggles for acceptance, legislation, and reimbursement, who helped to shape the profession in significant ways, who sold the profession in all of his daily activities, and who was a class act and great friend – it was Ron Nelson."

– Jim Cawley, recipient of the Eugene Stead Award, 2011


"He (Ron) knew leadership development before we ever discovered it. He will be missed in so many circles and each of us bears the responsibility to carry on his dreams for this profession." – Rick Rohrs, past AAPA President

"Ron was a very gracious person and a champion for the PA profession. I will miss him." – Marshal Sinback, past AAPA President

"...his contributions to the profession are legendary; he was a mentor to most of us as well as a good friend." – Ina Cushman, past AAPA President

"Ron could always be counted on in an emergency. Among many instances, he provided the crucial and timely leadership needed to engineer a successful nation-wide grassroots campaign to save the Rural Health Clinics Program, when its existence was threatened in Congress in 1995. Now more than 3,500 such clinics provide medical care in underserved small towns across America. Many are in towns that otherwise would have no medical care." – Ed Friedman, past AAPA President

"I grieve for the loss of yet another friend, yet I celebrate the life of love, caring, compassion and daring that he lived." – Gregor Bennett, past AAPA President

These quotes are from leaders in our profession, all impacted by Ron and his leadership, guidance and motivation. Those of us in this profession owe a large debt of gratitude to Ron Nelson and his pioneering spirit. What more can you say about someone that affected the lives of so many? He was a positive influence to everyone he knew. He was the memory, the visionary, the voice and the compassion we all counted on. His mentorship and presence will be deeply missed. 



Central Michigan University PA Student Class Updates

Class of 2012- By: Andrea Jones, PA-S

This summer, the PA Class of 2012 welcomed the PA Class of 2013 and paired up with these new students as mentors. Information and advice was passed on to this incoming class to help build a sense of a student community. Our class received our white coats in celebration of completing our first year and we also presented gifts to our dedicated faculty and staff, thanking them for their guidance and support.

Beating Cancer: One Step At A Time

On a cold Sunday afternoon in April, our class laced up our running shoes and ran in the “Beating Cancer: One Step At A Time” 5K at Island Park in Mount Pleasant. Our class organized the event in order to raise money for the Norval Morey Cancer Center and the Brandon’s Defense Foundation. The event was a great success with over 100 additional members of the community participating! As a result, our class was able to donate \$1,000 to each organization in addition to raising greater community awareness about cancer.

Helping Children Fight Obesity

For our Community Service Project, our class staffed a booth at the children’s village for Summerfest at Island Park. Our booth was geared towards educating parents and children about childhood obesity. We passed out flyers and organized games for the children that incorporated exercise and physical activity. We had a blast hula-hooping and doing beach ball relays with the children.



Class of 2013- By: Mark David Wiles, PA-S

The Conclusion of the Beginning

CMU’s Physician Assistant Class of 2013 is finishing up their first semester. While the beginning was exciting and challenging time, this transition has been made easier by the helpfulness of the CMU faculty. Though the first-year students never had the opportunity to be instructed by Ron Nelson, they do have an understanding of the loss of a great person, PA, and professor; his legacy continues to lay the foundation for incoming PA students. In these past weeks, this PA class has come together to face the challenges of PA school, but we press on, striving for excellence academically and professionally. A welcoming picnic, put on by the CMU class of 2012, ignited a feeling of alliance that has continued to grow throughout the summer semester.

In the coming year, we will continue focusing on the didactic portion of PA school and plan to become more involved in the community, both locally and internationally; a medical mission trip is planned for December to Costa Rica. We are also taking advantage of MAPA’s ‘Total Enrollment’ program with every first year student in the CMU PA Program, a student member of MAPA and all of us plan to attend the Fall CME Conference. The first year students look

forward to continuing their involvement with MAPA, not only for their academic careers, but their professional careers too.

< Class of 2013

PrePAre



2011 Fall CME Conference October 13 – 16, 2011

Grand Traverse Resort & Spa

The Fall Conference promises to give attendees a well-rounded experience. The agenda is set and is infused with workshops, student sessions and family activities- plenty to keep people busy. The Resort will again offer 'Spa Week' discounts and golfing options at their championship courses. The conference is in a scenic location and takes place during the peak of fall colors. The

MI PA Foundation will be hosting an after-party following the Student Quiz Bowl, and they are adding a 'Live' auction to follow their 'Silent' auction on Saturday evening. The Saturday evening Members Banquet is a Casino- Mardi Gras theme where attendees will receive novelties at the banquet doors.

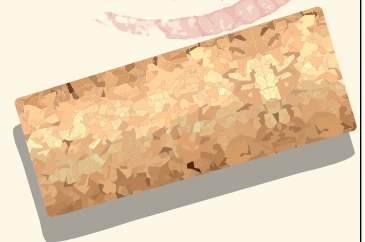
Why you should attend...

- **Quality CME-** Speakers are the best in the state, hand selected for their expertise.
- **Value-** Discounted hotel fees and meals included for registrants.
- **Family Friendly Atmosphere**
- **Socializing and Networking**

For FA'11

Conference Extras-

- Pamper yourself at the Resort's Spa with discounted services during the conference
- Peninsular Wine Tour
- Oil & Vinegar and Martini Tastings
- Multiple Workshops
- Great Wolf Lodge Water Park
- 5 K Fun Run
- Relaxation Station
- Silent and Live Auctions to benefit the MI PA Foundation
- Kid's Kookie Kitchen with Dylan's
- Family Nights with Movies and Arts & Crafts
- Appetizers with GTR Chefs
- Ever popular Student Quiz Bowl



Registration is available on line at www.michiganpa.org. Click on the registration form download. A conference registration form has also been included within this newsletter for your convenience.

A preliminary brochure was previously sent in the mail and a copy is also posted on-line. Take advantage of the early bird registration discount that is available to members prior to September 16, 2011. Joining members will receive a significant discount on dues if joining while registering for the conference. Fellow member registration will include all meals and Members Banquet.

Book your room early and receive the discounted conference rate. For more information, go to MAPA's website or call the MAPA office at 517-336-1498.

Community Service Series



Charity comes in many forms: time, money or donated basic necessity items. The people who benefit the most from charity are unassuming, humble and very appreciative of the effort.

Each year, in preparation for the annual MAPA Fall CME Conference, a local charity is selected that can benefit from the generosity of PAs and PA students attending the conference. This year we have selected 'Camp Quality' and want to support this camp with donations. Camp Quality's mission is to serve children with cancer and their families by providing year-round programs, experiences and companionship at no cost. It also promotes hope and inspiration while helping children foster life skills and develop their full potential. The goals of the camp are:

- Provide year-round support for the kids and their families
- Create a stress free environment
- Give families of children with cancer a much needed rest
- Give the child hope for the future
- and above all
- **'Let kids with cancer be kids again'**

Conference attendees will be able to support this charity in two ways. First, the five Michigan PA schools will compete to create a 'party idea' using the silver anniversary theme to help celebrate the camp's 25th anniversary next year. A group of judges will determine which school has created the best party, based on creativity, originality and design. Secondly, we will be asking conference attendees to donate financially to help send a child and their family to a one-week summer camp. Our hope is to raise enough money to send five kids to the summer camp. So please donate generously to support this conference charity. You can find more information on 'Camp Quality' at: www.campqualityusa.org/mi/.

FELLOW MEMBERSHIP COUPON

EXPIRES DECEMBER 31, 2011

SAVE \$75
on a MAPA Fellow Membership

PHYSICIAN ASSISTANT: The Michigan Academy of Physician Assistants (MAPA) wants to invite those Michigan PAs who are **not** members of MAPA to use this coupon to join MAPA. Once you are a Fellow Member, you will be extended all the rights and privileges that are apart of MAPA membership. Limit one coupon per joining member. This coupon cannot be used in conjunction with any other membership joining incentive program or at a MAPA CME event when a PA joins MAPA at a reduced rate along with meeting registration. This discount coupon is good for the first year of MAPA Fellow Membership **only**.

MAPA: This coupon is only good for Michigan PAs who have not been a member of MAPA for the past 6 months. This coupon is good towards the MAPA Fellow Membership dues for the first year of joining MAPA only and may not be used with any other MAPA membership incentive program.

TO ACTIVATE THIS COUPON: All a non-MAPA Michigan PA needs to do to activate this coupon is call MAPA Toll Free at 1-877-YES-MAPA or visit the MAPA website, membership portal at www.michiganpa.org



Join the Celebration!

The MI PA Foundation Commemorates Its 20th Anniversary

By: Kathy Dobbs, PA-C, President MI PA Foundation

Amazing, the MI PA Foundation has been giving out scholarships and PA research grants for 20 years; this is something to celebrate! Join us for the many fun and entertaining events that will occur at the 2011 MAPA Fall CME Conference at the Grand Traverse Resort & Spa. Here is a list of the planned activities:

Friday, October 14, 2011

- MI PAF sponsored Student Quiz Bowl
- Awarding of 2011 MI PAF Scholarships
- Unveiling of PA students' **"Promote PAs and the MI PAF"** videos
- **MI PAF 20th Anniversary Party & Dance** with a live band, dancing, cash bar and fun.
- Photo Booth for fun.
- Awarding of the Rad Hayden Scholarship during the Student Quiz Bowl.

Saturday, October 15, 2011

- Auction Time: LOTS of great items are flowing in already: golf packages, family vacation packages, yoga packages, private fencing lessons, Princesses Fantasy basket, Bake-like-a-Pro basket, Frankenmuth/Bavarian Inn getaway, support Detroit activities including: restaurants, museums and sports just to name a few. Cash, check or VISA/MasterCard accepted. Donation items are still being accepted by MI PAF board member Vaughn Begick, vaughnpac@aol.com.

MI PAF and MAPA are jointly sponsoring Michigan PA Research Poster Sessions. This is an opportunity for practicing PAs, PA students and faculty to share their knowledge and findings with the entire professional community. PAs in Michigan are making a difference.

The Kalamazoo based band, **"The Cheap Dates"** will perform live at the Friday evening party. Simon & Eric are talented, fun, play a wide variety of music and are really looking forward to meeting PAs. So PAs, PA students, spouses, friends and family are all invited. Suggested donation is: \$5 for PA students and \$20+ for working PAs and guests. Remember, the goal is to raise money for PA scholarships and research grants, so be generous and have fun. A cash bar will be available along with a Photo Booth that will have hats and other items for disguise; just \$5 for four pictures.

If you are interested in helping out at any of the MI PAF events, please contact Kathy Dobbs, MI PAF President, kjdobbs@aol.com. Help is needed at the auction, Party, Photo Booth and Student Quiz Bowl.

It is the goal of the MI PAF to raise \$50,000 this year to commemorate the 20th Anniversary, with the donations going to PA student scholarships and PA research. It is important to support our future. Have you sent in your tax deductible donation yet? Send monetary donations to: MI PAF, 1629 Haslett Road, #129, Haslett, MI 48840.

WHO AM I?

I affect 30-60 year olds and a diagnosis of exclusion

I cause episodes of vertigo and drop attacks

I cause fluctuating and progressive hearing loss

I cause tinnitus and can 'burn out'

Adopt a low sodium diet; avoid tobacco, alcohol and caffeine

(answer in next 'MichiganPA')

(previous **Q₃** answer: Nutcracker Esophagus)

Q₃

quarterly
quiz
question

Michigan Automated Prescription System continued

If you have find the patient is using multiple providers or are concerned about your patient's history, it is appropriate to call the pharmacy the patient has used previously to obtain an updated history. If you find that your patient is using multiple providers, your approach to this patient can be carried out in a few different ways. It is appropriate to go over your findings with the patient and let them know that it is not a good idea to have multiple prescriptions by multiple providers. If you do not plan on providing scheduled medications due to your findings, you should call the other providers involved so they are aware of the circumstances. The patient may be unaware that this is not appropriate, or they may be abusing the medication. It is the provider's discretion to take further steps in referring the patient to a pain clinic for management of this pain or starting a pain contract to assure the patient is agreeing to stay within their practice guidelines.

Using your valid NPI number, you can register on the website (www.michigan.gov/lara) and develop a username and password. Once logged in to the site, you can request a patient's report by marking the check box next to the reason for running the report. You will be able to see all the scheduled II-V prescription medications filled by this patient over the past few years and as recently as 30 days ago.

It is vital to make sure your office staff is aware of what MAPS is and how it is utilized. Your supporting staff can pick up on clues as to a patient who may not be using the medication as prescribed.

To make your practice more effective, you can protect all parties by taking the time to run a MAPS inquiry. The extra steps and measures this process takes are necessary to monitor your patients and their actions.

There should be no assumptions or judgments made, because any patient can use medications inappropriately or be unaware that only one practitioner should be responsible for this purpose.

- MAPS is an important prescribing tool for scheduled medications and should be used on a regular basis by any provider prescribing scheduled medications.
- Remember that not only you, but your supporting staff can help in picking up on clues to patients who are abusing scheduled medications.
- We are better able to care for patients when we take necessary steps to assure their safety with scheduled medications.
- There are multiple ways to approach a patient who is using multiple providers, including pain contracts, referrals to pain clinics, and even speaking with the other providers involved to make all, aware of the situation.
- Do not make assumptions about any patient. You are protecting yourself and your patient by making sure they are taking medications as you prescribed.

HAIL TO MICHIGAN

As a Physician Assistant seeking to make the most of your career, while also making the most difference for those you serve, there's only one place to be – here with us. With a range of opportunities as diverse as our patient population, the University of Michigan Health System offers Physician Assistants:

- Rewarding, life-changing PA positions in more than half of our 65 clinical specialties
- Unmatched technological and diagnostic capabilities, and endless innovation
- Strong, thoughtful benefits that acknowledge your contributions at work, and your priorities at home

That's **the Michigan Difference** – having pride in exceptional performance, but never ceasing to strive for improvement and greater impact.

To learn more, and to apply online, visit www.umhscareers.org today.

EOE/AA



Please visit the MAPS login website at <https://sso.state.mi.us/> and register with your NPI number today. The website provides instructions on getting started and how to run a MAPS report. Start using this tool without hesitation so you can better treat your patients, keep them safely on scheduled medications and prevent prescription drug abuse.

Submitted by: Abby Rogers, PA-C
Neurosurgery

MDCH Genomics offers Cancer Family History Guide for all Michigan Providers

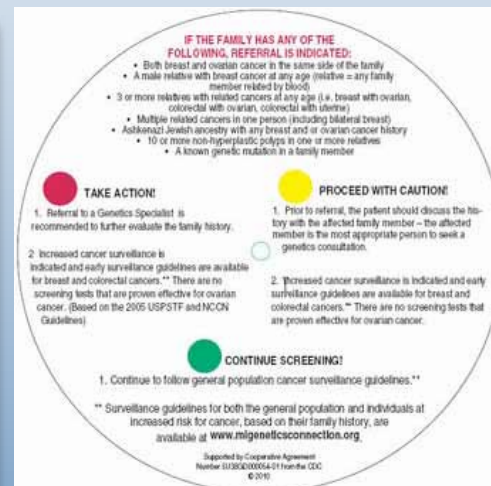
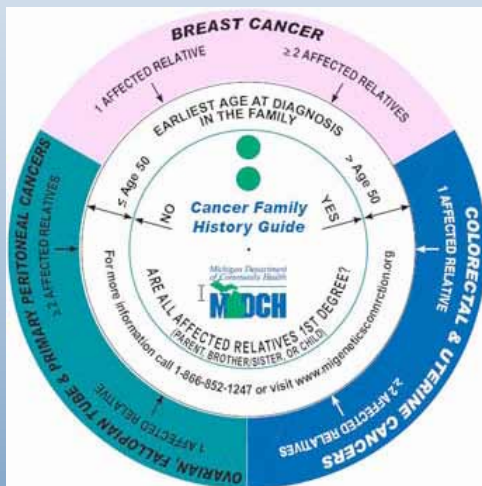
The **Michigan Department of Community Health** (MDCH) has developed a new decision tool for hereditary cancer risk. MDCH is offering all Michigan healthcare providers free copies of this hand-held risk assessment tool designed to be used with patients who have a family history of breast, ovarian, colorectal, or endometrial cancers. Modeled after a standard obstetrical pregnancy wheel, this tool was developed by certified genetic counselors

at MDCH, with input from the Centers for Disease Control and Prevention Office of Public Health Genomics and the Cancer Genomics Best Practices Steering Committee. The recommendations in this tool are based upon guidelines from the U.S. Preventive Services Task Force, Evaluation of Genomic Applications in Practice and Prevention Working Group, National Comprehensive Cancer Network and the Society of Gynecologic Oncologists Education Committee.

This guide is designed to identify patients at risk for two hereditary cancer syndromes – Hereditary Breast and Ovarian Cancer (HBOC) syndrome and Lynch syndrome (often called hereditary non-polyposis colorectal cancer or HNPCC). It can be used quickly to address a family history of breast, ovarian, colorectal, or endometrial cancer in two minutes or

less. If a significant family history is reported, the guide indicates that a referral for genetic counseling and further evaluation is appropriate, as well as reviews increased screening and management options. This guide is **not** appropriate for use with patients who have a personal history of cancer.

If you would like to order free copies of the tool for your practice, please contact Jenna McLosky, MS, CGC mcloskyj@michigan.gov or visit www.migeneticsconnection.org/cancer_tool.shtml.



SOURCES/LINKS/SPONSORS/CONTACTS:

Michigan Academy of Physician Assistants: MAPA at 1-517-336-1498 or www.michiganpa.org
 American Academy of Physician Assistants: AAPA at 1-703-836-2272 or www.aapa.org
 National Commission on Certification of Physician Assistants: NCCPA at www.nccpa.net
 Accreditation Review Commission on Education for the Physician Assistant: ARC-PA at www.arc-pa.org
 Michigan Department of Community Health for PA License at www.michigan.gov
 Drug Enforcement Administration (DEA) License at www.deadiversion.usdoj.gov
 Michigan Physician Assistant Foundation (MI PAF) at www.mipaf.com

UPDATE on SENATE BILL 384

On June 16th 2011, Senate Bill 384, The Michigan Patient Access to Care and Patient Safety Act, passed the Senate unanimously. The bill is now awaiting introduction to the House of Representatives, which will occur in this fall's session. Senate Bill 384 amends the Health Code to revise certain sections related to physician delegable actions for physician assistants. Here is a summation of SB 384:

- Physicians may delegate scheduled II prescriptive privileges to PAs in all patient care settings, not just a seven day supply upon discharge from a hospital. Passing this bill would allow PAs to provide patients with more complete pain treatment upon release from the hospital and throughout their care in many office practice settings, especially surgery, orthopedics & pediatrics.
- Clarifies the ability of physicians to delegate the authority to PAs to sign forms originally requesting a physician signature. Over the years MAPA has fought numerous legislative battles when individual entities in the state and elsewhere have concluded that 'physician signature' meant that a physician actually had to sign a particular form, thus ignoring the physician's ability to delegate. This all encompassing wording should end these short sighted interpretations that have plagued Michigan PAs for years.
- Allows physicians to delegate daily rounding on patients without the requirement that the physician must then see the patient later in the day. The Michigan Department of Community Health (MDCH) had interpreted a 1950's (pre-PA practice) rule stating: "All persons admitted to a hospital shall be under the continuing daily care of a physician licensed to practice in Michigan." This resulted in some citations of Michigan Hospitals and was affecting PA employment in Northern Michigan. As we have seen countless times, these interpretations spread throughout the state, thus eventually affecting countless physician-PA team practices and access to care.
- Allows PAs the ability to sign for safety restraints in a hospital setting. PAs have been writing orders for restraints for years and in a memo of 2008, MDCH interpreted that only physicians could order safety restraints, thus disallowing PAs and NPs the ability to write those orders in a hospital setting.

The nurse practitioners having supported the rules in 1999, allowing physicians to delegate controlled medication prescriptive privileges to PAs and NPs, were initially included in Senate Bill 384. The Michigan Council of Nurse Practitioners has since requested to be removed from the bill and have chosen to pursue their independent practice bill.

A huge part of MAPA's success with legislative efforts for PAs, aside from your MAPA membership, is the ability to have our lobbyist Mike DeGrow, direct financial support to key legislators who support PAs. Through your donations to the Physician Assistants of Michigan Political Action Committee (PAMPAC), Mike DeGrow and our Legislative Committee choose legislators and donate money to their campaigns. Recently, I attended a fund raising event to support Senator Jim Marleau, Chair of Senate Health Policy Committee and sponsor of Senate Bill 384. PAMPAC donated \$1,000 to his campaign. Not only did your donations allow us to show support to Senator Marleau, but it allowed MAPA to interact with other organizations and legislators attending the event. Your MAPA representatives were able to discuss issues important to our profession with a myriad of other organizations and legislators, including Michigan's health care organizations, all in one setting. By attending these events to support legislators and donating to their campaign, we are furthering the mission of maintaining a healthy and effective practice environment for PAs in Michigan. We respectfully ask for your donations to PAMPAC and help us continue the fight for Michigan PAs. **PA**

Submitted by:

Ron X. Stavale, PA-C, President-Elect MAPA

Quote:

"Few is the number who think with their own minds and feel with their own hearts."

*Albert Einstein 1879-1955
Theoretical Physicist*



WELCOME

New MEMBERS

ASM - 0 AFM - 11
STU - 53 FEL - 7

ASM - Associate Members
AFM - Affiliate Members
STU - Student Members
FEL - Fellow Members

A total of 79 Members have joined MAPA since June 2011:

Amanda Albert, PA-S	STU	Mt. Pleasant, MI
Alex Anderson, PA-C	FEL	Freeland, MI
Chelsea Baker, PA-S	STU	Mt. Pleasant, MI
Robert Belke, PA-S	STU	Northville, MI
Danielle Borgerding, PA-S	STU	Farwell, MI
Sarah Callahan, PA-S	STU	Chesterfield, MI
Sean Cameron, PA-S	STU	Bay City, MI
Robyn Carli, PA-S	STU	Marquette, MI
Marissa Carr	AFM	Sterling Heights, MI
Tom Catrett, PA-S	STU	Grosse Pointe, MI
Brian Chiu, PA-S	STU	Mt. Pleasant, MI
Stephen Cupp	AFM	Novi, MI
Ricardo Deligny, PA-S	STU	Livonia, MI
Jeff DeLongchamp, PA-S	STU	Ortonville, MI
Erin Dillon, PA-S	STU	Mt. Pleasant, MI
Nicole Ferrari, PA-S	STU	Rochester, MI
Jennifer Finos, PA-S	STU	Bruce Twp., MI
Chad Foucault, PA-S	STU	Essexville, MI
Amanda Gatia	AFM	Bloomfield Hills, MI
Jenna Gillan, PA-S	STU	Mt. Pleasant, MI
Betsy Gurecki, PA-S	STU	Stanton, MI
Angela Harris, PA-S	STU	Huron Twp., MI
Paula Havisto, PA-C	FEL	Woodruff, WI
Kristen Heinbeck, PA-S	STU	Grand Rapids, MI
Elizabeth Heinrich, PA-S	STU	Troy, MI
Laura Heinrich, PA-S	STU	Mt. Pleasant, MI
Heather Henson, PA-S	STU	Toano, VA
Christine Hillman, PA-S	STU	Mt. Pleasant, MI
Gayle Hofmann, PA-C	FEL	Wyoming, MI
Sebastian Hohl, PA-S	STU	Marquette, MI
Sean Hughes	AFM	East Lansing, MI
Kathleen Jarbo	AFM	Sterling Heights, MI
Amanda Johnston, PA-S	STU	Clarkston, MI
Sonia Joy	AFM	Troy, MI
Kathryn Kabelman, PA-C	FEL	Chicago, IL
Jeff Kaneko, PA-S	STU	Mt. Pleasant, MI

Candice Kirma	AFM	West Bloomfield, MI
Nicholas Klynstra, PA-S	STU	Grand Rapids, MI
Betsy Krchmar, PA-S	STU	Harrison, MI
Carrie Kreucher, PA-S	STU	Davison, MI
Anna Krzak, PA-S	STU	Northville, MI
Katie Lindsay, PA-S	STU	Harbor Springs, MI
Marisa Lowe, PA-S	STU	Chesterfield Twp., MI
Kathleen Madison, PA-S	STU	Mt. Pleasant, MI
Ian McBain	AFM	Sterling Heights, MI
Shauna Miller, PA-S	STU	Mt. Pleasant, MI
Michael Millette, PA-C	FEL	Sault Ste. Marie, MI
Kara Montini, PA-S	STU	Farwell, MI
Megan Moser, PA-S	STU	Mt. Pleasant, MI
Laura Muncie	FEL	Grand Rapids, MI
David Ophoff, PA-S	STU	Grand rapids, MI
James Pail, PA-S	STU	Mt. Pleasant, MI
Natalie Pobocik, PA-S	STU	Lennon, MI
Lauren Potestato, PA-S	STU	Macomb, MI
Alissa Radawski, PA-S	STU	Mt. Pleasant, MI
Stephanie Rae, PA-S	STU	Rochester Hills, MI
Emily Sutton	AFM	New Haven, MI
Kay Szcodronski	AFM	Chelsea, MI
Marsha Thomas	AFM	Ann Arbor, MI
Rebecca Van Kamman, PA-S	STU	Grand Rapids, MI
Margaret Wallace, PA-S	STU	Brownstown, MI
Caitlin Ware, PA-S	STU	Marne, MI
Tara Way	STU	Kalamazoo, MI
Nicole Weick, PA-C	FEL	Livonia, MI
Brittany White, PA-S	STU	Mt. Pleasant, MI
Mark Wiles, PA-S	STU	Mt. Pleasant, MI
Shanna Williamson, PA-S	STU	Mt. Pleasant, MI
Rachel Wittum, PA-S	STU	Rockford, MI
Andrea Young, PA-S	STU	Howell, MI
Scott Zeilstra, PA-S	STU	Mt. Pleasant, MI
Allison Zentz, PA-S	STU	Shelby Twp., MI

PLANNER

EVENTS / SEMINARS / CLASSES / CONFERENCES

National PA Week - 2011

DATE: October 6-12, 2011

MAPA's 2011 Fall CME Conference

DATE: October 13 - 16, 2011

SITE: Grand Traverse Resort & Spa
Traverse City, MI

Future MAPA Fall CME Conferences

- 2012 Soaring Eagle Resort
- 2013 Grand Traverse Resort & Spa
- 2014 Grand Traverse Resort & Spa
- 2015 Grand Traverse Resort & Spa
- 2016 Grand Traverse Resort & Spa



PRSRT STD
US POSTAGE
PAID
LANSING, MI
PERMIT NO. 992

120 W. Saginaw
East Lansing, MI 48823
Toll Free: 1-877-937-6272
Fax: 517-336-5797
Email: mapa@michiganpa.org
Website: www.michiganpa.org



'The Last Word...'

This September will sadly mark the 10th anniversary of the World Trade Center holocaust. A horrific scene where close to 3000 people

lost their lives, 'two towers' fell and countless lives affected. This attack on the people of America, which took all of 14 minutes, will take more than a lifetime to resolve, yet has forever changed our psyche and lives as we knew it. It has proven to be a sad commentary that we cannot take for granted our freedom and security, a powerful message that will continue to haunt us as we go about our lives.

In the Michigan PA community, we have sad news from this year. 'Two towers' of our profession have died and their passing will affect many more lives than the ones they touched. Radford Hayden, PA-C and Ron Nelson, PA-C had their lives cut short, but gave so much in the time they were with us. Both were accomplished clinicians, teachers, mentors, leaders and friend. These gentlemen PAs stood tall in their profession, gave more than asked of them and only wanted decency in return.

Is there a similarity between the WTC towers tragedy and the passing of Rad and Ron, obviously not. But the loss of both of these paired towers will sustain and forever change the way we practice and look at life. We should not forget these PAs, their impact and what they meant to us as 'two towers' in our profession. Maybe it is good that we never forget and in small part, their contributions will endure.

Chris Noth, PA-C
Editor, 'MichiganPA'
cjnoth@yahoo.com