



LeadingAge Massachusetts

70th
**Annual
Meeting**
of the Membership

October 9, 2024

College of the Holy Cross | Worcester, MA

LeadingAge[™]
Massachusetts



Dear Members and Friends:

On behalf of the LeadingAge Massachusetts staff and Board of Trustees, we are honored to welcome you to this landmark 70th Annual Meeting of the Membership! Reaching this milestone is a testament to the unwavering commitment and collective efforts of our members over the past seven decades. We are thrilled to have you join us this evening to celebrate the achievements of our members, elect the leaders of our Association, and enjoy a night of fellowship. Now more than ever, we value the opportunity to gather and reflect on the remarkable impact we have made together.

We are thrilled to be welcoming Acting Secretary of the Executive Office of Elder Affairs, Robin Lipson, who will share some celebratory and inspirational remarks. And we are extremely pleased to be recognizing the outstanding efforts of Senator Patricia Jehlen and Representative Tom Stanley, with our Aging Services Champion Award this evening.

The highlight of tonight's celebration is the presentation of our Annual Achievement Awards. Please join us in congratulating the outstanding recipients of this year's awards. Their work exemplifies the dedication and passion of our members in striving for excellence and enhancing the lives of those they serve. They truly embody our mission of expanding the world of possibilities for aging.

We would like to extend our heartfelt thanks to the member organizations that have chosen to support the Association through their generous sponsorship of this year's Annual Meeting. A list of sponsoring organizations can be found later in this program. We are also deeply grateful for the continued support of our Business Partners, whose generosity sustains our work throughout the year and makes events like this one possible. Finally, we would like to acknowledge the dedicated efforts of the Achievement Awards Review Committee, the Annual Meeting Planning Committee, and our talented staff, Sarah Lacasse, Vice President, and Jeanmarie Roberts, Membership Coordinator, for their work in making the 70th Annual Meeting a memorable success.

Thank you for being part of this momentous occasion and for your continued dedication to advancing the field of aging services. Here's to another 70 years of progress and partnership!

Enjoy the event!

Elissa Sherman
President, LeadingAge MA

Walter Ramos
Chair, Board of Trustees

Schedule of Events

4:00PM

Cocktail Reception



5:00

Program | Dinner | Awards Ceremony



7:00PM

Dessert Reception

Business Meeting Agenda

- | | |
|--|--------------------|
| 1. Guest Remarks | Robin Lipson, EOEА |
| 2. Call Business Meeting to Order | Walter Ramos |
| 3. Acceptance of the Minutes of the 2023 Annual Meeting | Walter Ramos |
| 4. President's Report & Legislative Awards | Elissa Sherman |
| 5. Report of the Committee on Trustees | Nicole Breslin |
| 6. Election of Trustees and Officers | Walter Ramos |
| 7. Chairs Report | Walter Ramos |
| 8. Meeting Adjourns | Walter Ramos |

The Business Meeting will be immediately followed by dinner and then the Annual Achievement Award Ceremony

Report of the Committee on Trustees

Slate of Officers:

Chair Walter Ramos, Rogerson Communities

Chair –elect Margaret Manton, Loomis Communities

Treasurer James Freehling, Brookhaven at Lexington

Clerk Matthew Hollingshead, Newbridge on the Charles

Immediate Past Chair Nicole Breslin, Campion Center

Slate of Trustees:

Nominated for a three-year term

Zehra Abid-Wood, Lasell Village

Babacar Diop, German Centre

Marguerite D'Angelo, CSI Support & Development Services

Philip Hickey, Notre Dame Health Care

Nominated for a second three-year term

Michael Ferrick, D'Youville Life and Wellness

Joseph Frias, North Hill

Matthew Hollingshead, NewBridge on the Charles

Margaret Manton, Loomis Communities

Thank you to the following Trustees completing terms:

Marianne Delorey, Colony Retirement Community

Betsy Mullen, Legacy Lifecare



2023-2024

Board of Trustees

OFFICERS

Chair Walter Ramos, Rogerson Communities

Chair –elect Margaret Mantonì, Loomis Communities

Treasurer James Freehling, Brookhaven at Lexington

Clerk Matthew Hollingshead, Newbridge on the Charles

Immediate Past Chair Nicole Breslin, Campion Center

President Elissa Sherman, LeadingAge Massachusetts

TRUSTEES

Chuck Crush, New England Homes for the Deaf*

Marianne Delorey, Colony Retirement Community

Michael Ferrick, D'Youville Life & Wellness Communities

Joseph Frias, North Hill

James Freehling, Brookhaven at Lexington

Betsy Mullen, Legacy Lifecare

Felix Rosenwasser, Fox Hill Village

Patrick Stapleton, Sherrill House

**Resigned in 2024*



ATLANTIC CHARTER PROUDLY SUPPORTS

LeadingAge Massachusetts



ATLANTIC CHARTER
INSURANCE COMPANY

25 New Chardon St., Boston, MA | 617.488.6500 | www.atlanticcharter.com



Insurance Brokerage ■ Risk Mitigation ■ Special Risks

75 years of experience in providing risk management and insurance services to the health care industry.

*Sallop Insurance is pleased to partner with
Leading Age MA and its Membership*

- Independent Brokerage for all lines of property and casualty insurance
- Risk Management Services
- Fully Insured Traditional Programs as well as assistance with Alternative Risk Transfer, Captives and Risk Retention Groups
- Leading Healthcare Brokerage in New England with Unparalleled Client Service
- For Profit and Not for Profit clientele receiving services countrywide
- Specialty Programs for Skilled and Non-Skilled Nursing Care, Assisted Living, CCRC, Home Care and Hospice providers

Entrust your operations with insurance professionals who have true expertise in your industry.



MISSION. MARGIN.

It takes balance.™

You ride the line between solving today's challenges and planning for what's next. At CLA we bring balance to business to create opportunities now and for the future.



We'll get you there.

CPAs | CONSULTANTS | WEALTH ADVISORS

Sean Morrison, 781-982-1001, Quincy, MA

CLAconnect.com

Your single strategic partner for Well-Being, Pharmacy and Therapy generates ease, efficiency and coordination.

Symbria provides innovative ways to keep those you serve healthier and independent longer. Our exceptional combination of business acumen and passion for people is why we stay nimble, responsive and connected to what you need.

Our culture of innovation and creative use of technology achieves better results, lightening your clinical team's workload, and enhancing your competitive edge.

Symbria[®]

Trusted partner. Proven outcomes.

[Symbria.com](https://www.symbria.com)



ZIEGLER SENIOR LIVING FINANCE

Together we are making a continued commitment to senior living excellence through education and comprehensive, innovative financial services



Investment Banking



Seed Capital



Financial Risk Management



FHA/HUD Mortgage Banking



Dispositions, Mergers & Acquisitions



Capital & Strategic Planning



Sponsorship Transitions



Research, Education & Thought Leadership

KEITH ROBERTSON

Managing Director
krobertson@ziegler.com
212 284 5403

CHAD HIMEL

Managing Director
chimel@ziegler.com
212 284 5408

PAT MORAN

Assistant Vice President
pmoran@ziegler.com
312 705 7309



Ziegler

CAPITAL :: INVESTMENTS :: ADVICE

Investment banking services offered through B.C. Ziegler and Company. FHA mortgage banking services are provided through Ziegler Financing Corporation, which is not a registered broker/dealer. Ziegler Financing Corporation and B.C. Ziegler and Company are affiliated and referral fees may be paid by either entity for services provided.

©2024 B.C. Ziegler and Company | Member SIPC & FINRA



Aging Services Champion Award

The Aging Services Champion Award, presented by LeadingAge Massachusetts, honors individuals who have demonstrated exceptional leadership and commitment to advancing policies that enhance the quality of life for older adults across the Commonwealth. Recipients of this award are recognized for their advocacy in promoting the well-being, dignity, and independence of seniors, as well as their support of aging services providers. Through their dedication to ensuring access to vital services such as healthcare, housing, and long-term care, these individuals have become true champions of aging services in Massachusetts.



Senator Patricia Jehlen

Patricia Jehlen is a Massachusetts State Senator representing the Second Middlesex district which includes parts of Cambridge, Medford, Somerville and Winchester. Senator Jehlen is the Senate Chair of the Joint Committee on Elder Affairs where she has been a long-time champion of issues impacting older adults in the Commonwealth and has sponsored numerous bills aimed at improving access to long term services and supports. She was first elected to the Senate in 2005, following 14 years in the House of Representatives. She is also currently serving as the chair of the Joint Committee on Labor and Workforce Development and Vice Chair of the Committee on Public Service.



Representative Thomas Stanley

Thomas Stanley, is a member of Massachusetts House of Representatives, representing the 9th Middlesex District and the city of Waltham. First elected in 2001, Representative Stanley serves as the House Chair of the Joint Committee on Elder Affairs, a post he has held since 2021. As the House Elder Affairs Chair, Representative Stanley champions improvements across the continuum of care for older adults in need of long-term services and supports (LTSS). He sponsored legislation (now Chapter 197 of the Acts of 2024) that supports the long-term care workforce, increases oversight and transparency standards for facilities and operators, improves the quality of and access to care, and permanently allows assisted living residences to offer basic health services. Representative Stanley is a native of Waltham who has also served as an At-Large member of the Waltham City council from 1997 to 2016; 2018-Present.

Volunteer of the Year Award

Rita Senecal

Overlook Hospice



LeadingAge Massachusetts is proud to recognize Rita Senecal with the Volunteer of the Year Award, celebrating her extraordinary dedication and commitment to enhancing the quality of life for older adults at Overlook Hospice. Rita's story is a testament to the incredible impact that volunteers can have on their communities.

Rita joined Overlook Hospice in 2017 at the age of 83, and from the start, she brought an unmatched spirit of generosity, warmth, and resilience to the organization. Whether she's managing bereavement letters, assisting with volunteer coordination, or hosting memorial service receptions, Rita has shown an extraordinary commitment to service.

Even during the unprecedented challenges of the COVID-19 pandemic, Rita's resolve never wavered. She continued her work from home, ensuring that families received the care and support they needed during their most difficult moments. Her positive attitude, infectious smile, and willingness to lend a hand wherever needed have made her an irreplaceable member of the hospice family.

Rita's kindness and compassion extend beyond her administrative support. Her baking talents, showcased through her homemade baklava and coffee cakes, have nurtured and comforted her team during countless meetings. Despite suffering a stroke in December 2022, Rita's indomitable spirit has remained strong. Now, at 90 years old, she continues to inspire everyone around her with her perseverance and love for volunteering.



Program Innovation Award



The Harmony Mental Health Program Mary Ann Morse at Heritage

LeadingAge Massachusetts is proud to present the Program Innovation of the Year Award to the Harmony Mental Health Assisted Living Program at Mary Ann Morse at Heritage. This groundbreaking initiative addresses the critical mental health needs of older adults within a supportive and integrated residential setting.

As the aging population grows, the prevalence of mental health challenges such as depression, anxiety, bipolar disorder, and psychosis also increases. The Harmony program offers a pioneering solution by providing a comprehensive, holistic approach to mental wellness for older adults. Originally launched in 2017, Harmony underwent a strategic redesign in 2021, transforming from a separate, locked model into an integrated assisted living program. It serves as a transitional step down from psychiatric hospitalization, providing psycho-social support in a non-institutional environment.

Harmony's innovative approach includes individualized therapeutic support, social integration, and residential comfort, preparing residents for a smooth transition to traditional assisted living or independent living environments whenever possible. The program's unique features include specialized staff training, access to talk therapists and psychiatry services, and opportunities for social engagement both within the Harmony community and the broader Mary Ann Morse at Heritage setting.

The impact of the Harmony program is evident in its outcomes: over the past three years, the 25-apartment program has served 51 residents, with 94% avoiding re-hospitalization and 17 successfully transitioning to a lower level of care. By addressing the distinct needs of aging adults with mental health challenges, Harmony not only improves quality of life for its residents but also sets a new standard for mental health care in assisted living communities.

Workplace Excellence Award



Lutheran Rehabilitation & Skilled Care Center

The Workplace Excellence Award recognizes organizations that demonstrate a strong commitment to investing in their staff and fostering a healthy, inclusive workplace culture. Lutheran Rehabilitation and Skilled Care Center (Lutheran Rehab) exemplifies this dedication by prioritizing the well-being and success of its employees.

In FY2024, Lutheran Rehab implemented annual raises, enhanced its tuition reimbursement program, and expanded its benefits package. The organization also launched the PeopleFirst Pathways program in partnership with Ascentria Care Alliance, which focuses on human development to address the unique challenges faced by employees, such as childcare, transportation, and career advancement. This pioneering initiative not only supports employee wellness but also creates a pipeline of talent and improves retention and engagement.

Lutheran Rehab's commitment to employee satisfaction is further demonstrated through a thorough assessment process conducted with the help of a third-party research firm. This feedback led to personalized plans and services designed to meet the diverse needs of the workforce, fostering an environment where staff feel supported and valued.

With a remarkable track record, over 23% of Lutheran Rehab's employees have served for five or more years, and 21 employees have been with the organization for over a decade. By investing in staff development and creating an inclusive workplace, Lutheran Rehabilitation and Skilled Care Center not only enhances the quality of care for its residents but also cultivates a resilient community where every team member can thrive.

Emerging Leader Award

Kyle Hamilton

Fairing Way & Dwyer Home



LeadingAge Massachusetts is excited to honor Kyle Hamilton from Dwyer Home with the Emerging Leader Award. Kyle's remarkable journey from a 16-year-old dishwasher to Food Service Director by the age of 21 is a testament to his hard work, dedication, and passion for improving the lives of residents and enhancing community operations.

Since joining Dwyer Home in 2020, Kyle has quickly advanced through various leadership roles, demonstrating a natural ability to inspire and motivate those around him. His commitment to excellence led him to become a Certified Dietary Manager in 2023, and his leadership as Kitchen Manager was pivotal in achieving a 5-star DPH survey, showcasing his exceptional organizational skills.

As Food Service Director, Kyle has implemented a new dining program that not only increased resident engagement but also improved customer service standards while enhancing staffing levels for certified nursing assistants. His initiative to expand dining services to the Independent Living community has significantly boosted profit margins and enriched the overall resident experience.

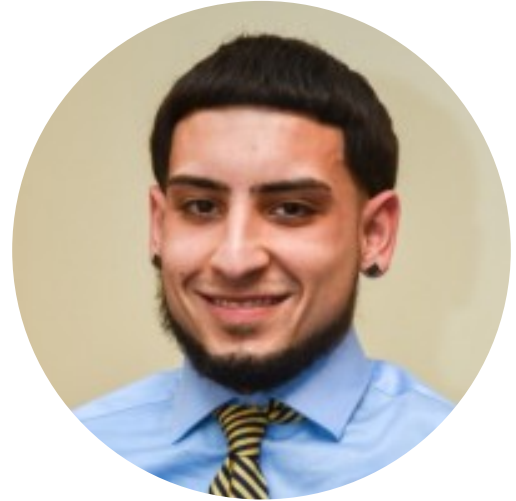
Kyle's influence reaches far beyond the kitchen; he embodies integrity and hard work, setting a standard for all at Dwyer Home and Fairing Way. His shared responsibilities as Co-Activities Director further reflect his dedication to enhancing resident engagement across the board.

With his aspirations to become an Executive Director on the horizon, we are thrilled to recognize Kyle Hamilton as a rising star in the field of aging services. His journey inspires us all, and we are excited to see the continued impact he will make in the years to come.

Emerging Leader Award

Justin Pineiro

The German Centre



LeadingAge Massachusetts proudly recognizes Justin Pineiro as a recipient of the Emerging Leader Award. In just eight months as Plant Operations Director at the German Centre, Justin has demonstrated exceptional leadership and commitment to excellence, transforming challenges into opportunities for growth and improvement within his department.

Since joining the German Centre in December 2023, Justin has brought a wealth of experience from Central Supply and Housekeeping Management, along with invaluable insights learned from his father's extensive career as a Plant Operations Manager. His innovative approach and dedication have quickly earned him the respect of his team, comprised of seasoned maintenance employees with decades of experience.

Under Justin's leadership, significant strides have been made to enhance patient safety and facility compliance. He spearheaded the implementation of the Wandergard System, significantly improving the safety of vulnerable residents, and led essential fire alarm and water protection upgrades, demonstrating his commitment to maintaining the highest safety standards. Additionally, Justin established a monthly safety committee, fostering a culture of open communication and continuous improvement.

Justin's achievements have not gone unnoticed, as he was recently honored as Employee of the Month for his relentless dedication and impactful contributions. His visionary leadership and integrity inspire those around him, setting a new standard for excellence within the organization.

Heart & Hands Award

Sonya Brown

The Berkeley

Retirement Home



We are proud to present the Heart and Hands Award to Sonya Brown, a remarkable Certified Nursing Assistant at the Berkeley. This esteemed award recognizes individuals who exemplify exceptional relationships with residents, enriching their lives through care that goes above and beyond the usual expectations of their roles.

Sonya's journey at the Berkeley began in March 2007, and over the past 17 years, she has become a cornerstone of the community. Sonya has the unique ability to bridge the gap between new and long-term residents, welcoming newcomers with open arms and ensuring that all feel valued and understood. Her insightful approach allows her to help residents navigate the changes that come with welcoming new faces into their home.

As a staunch advocate for her residents, Sonya consistently prioritizes their needs with professionalism and grace. She remembers the small details—each resident's favorite coffee or treasured family stories—enhancing their quality of life and creating a sense of belonging that is truly special. Her efforts to personalize care reflect her deep understanding of the residents she serves.

Sonya embodies the essence of teamwork, always willing to go the extra mile for her colleagues and tackle any challenge that arises. Her light-hearted spirit and sense of humor bring joy to her workplace, making her a beloved presence among her peers.

Sonya Brown truly embodies the spirit of caregiving. Her dedication, compassion, and tireless efforts have left an indelible mark on the Berkeley community. As Ann Rosas, the Administrator, aptly notes, "I cannot imagine the Berkeley without Sonya Brown."



Honorable Mentions

Thank you to everyone who took the time to nominate the exceptional individuals and programs within their organizations!

Emerging Leader Award

Danyel Darger | The Overlook

Mimi Lewis | Hebrew SeniorLife

Sally Little | Brudnick Center for Living

Heart & Hands Award

Cherie Clinton | North Hill Communities, Inc.

Darly Charles | Leonard Florence Center for Living

Elizabeth Lyng | Newbury Court, a Deaconess Abundant Life Community

Latoja Roberson | Lasell Village

Lee Merrill | Chelsea Jewish Lifecare

Pauline Kerr | German Centre

Victor Archilla | St. Patrick's Manor and Carmel Terrace

Jennifer Navedo | The Overlook

Alexx Wood | Carleton-Willard Village

Program Innovation Award

The Age of Excellence Awards | Glenmeadow

The Assisted Care Program | Brookhaven at Lexington

The Barbara Doyle Speaker Series | Carleton-Willard Village

The Dwyer Home Dining Program | Dwyer Home at Fairing Way

A Alliance Health Management Services

144 Turnpike Rd, Suite 220, Southborough, MA 01772

*Transform Your Skilled
Health Care Community
with our*

Expert Health Consulting and Management Services

Non-Profit 501(c)3

What Sets Us Apart...

We are a dedicated non-profit organization specializing in providing comprehensive Health Management Services to Skilled Nursing Facilities. Our mission is to enhance the quality of care and operational efficiency within your facility through our experienced and multifaceted team.

We offer:

- **Operational Management:** Streamline your daily operations with our proven strategies to increase efficiency and improve resident outcomes.
- **Clinical Regulatory Compliance:** Stay ahead of Surveys, regulatory changes and ensure compliance with our expert guidance and support.
- **Financial Management:** Optimize your financial performance with our tailored financial strategies and insights.
- **Tailored Solutions:** We understand that every organization has unique needs. Our services are customized to fit your specific requirements, ensuring the best outcomes.
- **Crisis Management:** Need immediate assistance? Our team is ready to provide short-term crisis management to stabilize and support your facility in times of need.

Contact Us

Carly Ring

Director of Marketing & Sales

Alliance Health Management Services

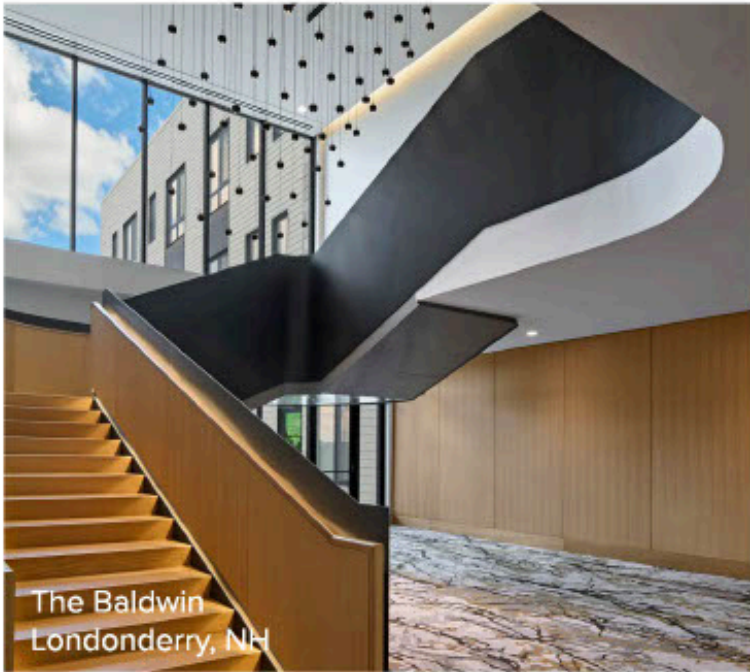
(203) 804-8919

CRing@AllianceHMS.org

Ready to learn more? Head to alliancehhs.org



The Pryde
Hyde Park, MA



The Baldwin
Londonderry, NH



The Baldwin
Londonderry, NH

DiMella Shaffer is reimagining communities for older adults through an inclusive design process centered on clients needs and aspirations.

**DIMELLA
SHAFFER**

PLANNING ARCHITECTURE INTERIOR DESIGN

The Baldwin
Londonderry, NH





HAMPDEN PARK

Capital & Consulting

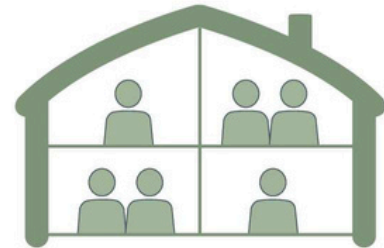
Mission Statement

To create and preserve affordable housing in partnership with mission driven organizations.



Vision Statement

A world in which everyone lives in a comfortable, safe, and stable home.



Corporate Values



Mission Driven - We passionately pursue our purpose of creating and preserving affordable housing. We measure our success based on the fulfillment of this mission, not on the number of transactions we close.



Team Oriented - Our company culture is defined by comradery, professionalism, mutual respect, and a healthy dose of humor. Collaboration is key to each project we work on. We are honored to serve as a part of our clients' teams.



Integrity - We always strive to do what's right, not what's easy. We are committed to complete honesty. We take responsibility for what we do and when we do it and are accountable to our clients and ourselves.



Client Focused - We are committed to our clients and their unique missions and goals. We guide each client with clear communication and personalized support to ensure they are equipped to make the right choices for their organization.



Humility - We believe in putting the team before oneself. We listen to others and take their points of view into consideration. We are curious and always looking to learn. When success is earned, we recognize the contributions of each team member and our business partners.

experts in
REHABILITATION
management

Preferred Therapy Solutions and Preferred Therapy Outpatient & Wellness are dedicated to providing state-of-the-art clinical and business solutions to the post-acute and long-term care industry. Our proven strategies improve the quality and delivery of care needed to drive operational success and positive patient outcomes. Strategic solutions provided include:

Full Service | In-house Management | Consulting | Education



CELEBRATING 20^{YEARS}

LEADINGAGE
MASSACHUSETTS
GOLD BUSINESS
PARTNERS

Jim MacManus
Director of Business Development
jmacmanus@preftherapy.com
860-549-2732

#itsallaboutthepatient
www.preftherapy.com



MAKE EVERY NUMBER COUNT

We care about the numbers and not just the numbers that define the budget and the timeline, but the numbers that count for the people, the project and the planet. Like receiving a 93% client repeat & referral rate and scoring 9.1 out of 10 in client satisfaction. **Because when we care about the numbers, we can help build a better future we can all count on.**



93%



REFERRAL RATE

WWW.CEFLOYD.COM

Concord, MA Middletown, CT

Garth Johnson
508-797-8155

LeadingAge MA Gold Sponsor

Certified



Corporation

This company is committed to accountability, transparency, and continuous improvement.

CHARTING SUCCESS *TOGETHER*

Why Choose Borislow Insurance?

At Borislow Insurance, we do more than deliver affordable, high-quality benefits – we create value that drives long-term success for your organization. Our personalized, client-focused approach ensures that every strategy we develop is specifically designed to address your unique goals and challenges.

A Partnership for Growth

Our role doesn't stop at providing benefits. At Borislow, we see ourselves as your strategic partner, working alongside you to craft innovative, custom strategies that support the well-being of your employees and the success of your organization. Let's collaborate to build a stronger future, together.



Innovative Market Strategies:

Utilizing the latest trends and technologies.



Client-Centric Approach:

Personalized and dedicated account management.



Proven Track Record: Over 40 years of industry success and an average client relationship of 17 years.

Learn More

Kirsti Karpawich
Vice President
kkarpawich@borislow.com
603-672-3124



The 1st Stand Alone Green House Nursing Home in MA, Opening 2025



**ARCHITECTURE
INTERIOR DESIGN
PLANNING
LANDSCAPE**

**Resident Centered
Senior Living & Skilled
Nursing Design
for 35 YEARS**

www.LWDA.com



Proud to
be with
Leading
Age at the
Vanguard
of Senior
Living



*Come to North Hill, because
you've got a lot of living to do!*

Visit or give us a call at 781.433.6524

LeadingAge™
Massachusetts

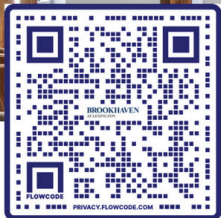
North Hill

865 Central Avenue, Needham, MA

NorthHill.org



Proud Sponsor of LeadingAge



At Brookhaven

Life Care living is as good as it looks.

Brookhaven at Lexington offers an abundance of opportunities for intellectual growth, artistic expression and personal wellness. Our residents share your commitment to live a vibrant lifestyle in a lovely community.

BROOKHAVEN
AT LEXINGTON



781-372-0098

marketing@brookhavenatlexington.org

www.brookhavenatlexington.org



Redefining Retirement



Vibrant, engaging, and maintenance-free lifestyle on a beautifully wooded campus



Trustworthy services and programs that enhance your life while you stay in your own home

CONTACT US TODAY TO LEARN MORE
781.275.8700 or cwvillage.org
Bedford, MA

Carleton-Willard is a not-for-profit continuing care retirement community.



FOX HILL VILLAGE: **Live your passion.**

Fox Hill Village resident Mimi Baird is passionate about mental health awareness. After spending more than a decade turning a manuscript written by her late father — a brilliant physician who both studied and suffered from manic depression — into a powerful book, she is now collaborating on a screenplay. So, what does this accomplished author love most about Fox Hill Village? "Living here gives me the freedom to pursue my passion."



10 Longwood Drive
Westwood, MA 02090
781.375.1231
FoxHillVillage.com



Scan to learn more or go to FoxHillVillage.com





An engaging community in Newton,
where lifelong learning is healthy living!

You can learn more at lasellvillage.com



**Sherrill
House**
*Here for you...
not for profit.*

Dialysis Center Now Open!

In June 2024, we opened DaVita
Kidney Care at Sherrill House, a
six-chair hemodialysis center.

For more information or to
schedule a tour, please contact
Admissions at 617-735-1775.

www.sherrillhouse.org

Thank you to LeadingAge for your passion and
dedication toward Expanding the World of
Possibilities for Aging.

Congratulations to the 2024 Annual Achievement
Award nominees and award recipients!



Deaconess Abundant Life Communities is proud of its tradition of embracing the dynamic needs of seniors while cultivating their desire to live abundantly, which aligns with the mission and vision of Leading Age. Our Residential Communities offer an independent lifestyle with a wealth of services and amenities. *Deaconess Abundant Life Services—Home Care* offers an extensive range of assistance in the comfort of your own home. Whatever your needs, we are here.

Call 978-369-5151 or visit www.nedeaconess.org for more information on how we can serve you.



80 DEACONESS ROAD
CONCORD, MA 01742
978-369-5151
WWW.NEDEACONESS.ORG

Expect more
from retirement.
Infinitely more.



Imagine living where you have the space and inspiration to grow in every way. To follow your vision for yourself. To expand your interests and inner fulfillment. Arts, fine dining, hobbies, friendships and fun – whatever you like to do, you can do it here, surrounded by beauty and kindness.

Best of all, we offer lifestyles for every unique need, including independent living, enhanced living, memory care, skilled nursing, short-term rehabilitation, private care, and palliative and hospice services, all met with on-site, world-class care services.

Call 508-321-7096 and view senior living from a whole new perspective.

Voted Best Senior Living Community of Central Mass 7 years running



Overlook-Mass.org
88 Masonic Home Road | Charlton, MA 01507
Sponsored by the Masonic Health System of Massachusetts





notredamehealthcare.org

- Assisted Living Residence
- Skilled Nursing Facility
- Residential Memory Care
- Short Term Rehabilitation
- Adult & Pediatric Hospice
- Adult & Pediatric Palliative Care

Exceptional Care For Families and Community



Contact us to learn more about the mission-driven, not-for-profit difference at Notre Dame Health Care.

555-559 Plantation Street
Worcester, MA 01605
(508) 852-5800

- Long-Term Care
- Independent Living
- Home Care Memory
- Care Aging Brain
- Research Geriatric
- Psychiatry Skilled
- Nursing Care
- Affordable Housing
- Assisted Living
- Lifelong Learning



All we are for all you
can be.

- Expressive Therapies
- Wellness Coaching
- Short-Term Rehabilitation
- Outpatient Rehabilitation
- Dementia Care
- Geriatrics Education
- Nutrition and Fitness
- And More >

Scan here.



AllWeAreForYou.org

Caring is our Tradition

- Unparalleled Residential Care
- Traditional Long-term Care
- Center for Short-term Rehabilitation
- Dedicated Certified Memory Care Unit

2024
Workplace Excellence
Award Winner



26 Harvard Street
Worcester, MA 01609
508.754.8877 | lutheranrehab.com
A member of Ascentria Care Alliance



Congrats to LeadingAge MA for another successful year!



The Berkeley Retirement Home and Nursing Center is proud to celebrate our very own Sonya Brown, recipient of the *2024 LeadingAge MA Heart and Hands Award!*

Thank you, Sonya, for the exceptional service, care and love you give to our residents, always supporting the sense of family our Berkeley Home provides.

Congratulations on this well-deserved recognition!

THE Carmelite SYSTEM
A Beacon Of Hope For All We Serve™

A CATHOLIC NOT-FOR-PROFIT HEALTH SYSTEM WITH SENIOR CARE FACILITIES THAT PROVIDE SERVICES TO THE AGED AND INFIRM.

VISIT OUR HOMES IN MASSACHUSETTS

INDEPENDENT LIVING | ASSISTED LIVING | POST ACUTE CARE | SKILLED NURSING
 HOSPICE CARE | REHABILITATION | MEMORY/DEMENTIA CARE

D'Youville
 861 YANUM AVENUE LOWELL MA 01854
 PHONE: 978.349.1100

MOUNT CARMEL
 320 PITTSFIELD ROAD
 LENOX MA 01240
 PHONE: 413.677.2260

CARMEL TERRACE
 ASSISTED LIVING
 933 CENTRAL STREET
 FRAMINGHAM MA 01701
 PHONE: 508.779.8000

ST. PATRICK'S MANOR
 NURSING & REHAB CENTER
 FOR SHORT-TERM REHABILITATION
 863 CENTRAL STREET
 FRAMINGHAM MA 01701
 PHONE: 508.879.3000

The Carmelite System Inc proudly supports the annual dinner of **LeadingAge** Massachusetts

LeadingAge Massachusetts
 70th Annual Meeting

SCAN HERE

Traveling the road together.

Shared Ideals

- Quality & Innovation
- Integrity & Transparency
- Inclusion, Diversity & Equality
- Compassion & Community

Shared Vision

All older adults live in age-friendly communities and are able to receive the services they need, when they need them, in the place they call home.

A Shared Commitment to Advocacy

LeadingAge[®]
Massachusetts

Rogerson
The Art of Well-Being

Rogerson is proud to partner with **LeadingAge** in expanding the world of possibilities for aging.

Congratulations
LeadingAge[®]
Massachusetts
for **70 years** of
dedication to
aging service
providers!


**MARY ANN
MORSE**
HEALTHCARE CORP.

**A Continuum of Senior
Living & Healthcare
Services**

**Mary Ann Morse
at Heritage**

Award-winning traditional, memory care, and mental health assisted living communities.
Framingham, MA

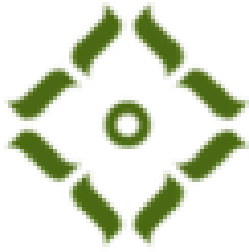
**Mary Ann Morse
Healthcare Center**

Short-Term Inpatient & Outpatient Rehab and Long-Term Care. Providing pulmonary care and on-site resident dialysis.
Natick, MA

**Mary Ann Morse
Home Care**

Medicare-certified skilled home health and personal in-home care.
Serving over 19 communities throughout the Boston MetroWest region

747 Water Street | Framingham, MA | maryannmorse.org



FAIRING WAY

AT UNION POINT

DWYER HOME

at Fairing Way 



Legacy Lifecare

Securing Legacies, Together

Leaders In Affiliation, Management & Consulting Services



CHELSEA JEWISH LIFECARE
CELEBRATING LIFE THROUGH
THE JEWISH TRADITION



Deutsches
Altenheim



JGS LIFECARE®
Guided by Jewish Values. Serving All Faiths.



Mount St. Vincent
Wellesley



ARMENIAN NURSING AND REHABILITATION CENTER



Sophia Snow Place



STONE
Rehabilitation
& Senior Living



Legacy Lifecare
VNA AND HOSPICE

Let's Build A Lasting Legacy Together

Contact us to learn more about preserving your mission with Legacy Lifecare.

978-471-5146 | info@legacylifecare.org | www.legacylifecare.org



Senior Living + Healthcare

WHAT WE DO

- ▄ Debt Issuance
- ▄ Equity Raising
- ▄ Acquisition, Affiliations,
Divestitures
- ▄ Financial Advisory
- ▄ Strategic Capital Planning

SOLUTIONS WE DELIVER

- ▄ Long-term Bond Solutions
- ▄ Bank and Agency Financing
- ▄ Interim Finance Solutions
- ▄ Alternative Capital Solutions

The logo consists of a stylized 'S' formed by two overlapping curved lines, one red and one grey.

Strategic Care Solutions, LLC

Strategic Care Solutions understands that today's rapidly changing health care environment can create complications across all dimensions of care, and we strive to find the unique opportunities and solutions to these challenges.



SCS would like to recognize and thank Elissa Sherman for her leadership and advocacy for older adults in our community. Her outreach provides all senior care providers with tools, resources and business intelligence.




Strategic Care Solutions serves clients in many domains: Hospitals, Skilled Nursing facilities, Memory Care units and facilities, Assisted Living communities and CCRCs.



"Medical Supplies And More..."
Since 1945

GVW 25,950
USDOT 240147

1.800.442.1205

 800-442-1205

WHY GERIMED?

Medical Supplies, Equipment, & More *for less!*

At Geriatric Medical, our core focus is to improve long term care by helping providers meet their clinical and financial goals.



Low Cost



Product Selection



Dependable Delivery



Rapid Response Time



Free Financial Tools



and more!

Learn more about how we provide

1. Better clinical results at a lower overall cost.

2. Laser-focus in serving long term care providers & caregivers.

3. A partnership that extends beyond supplies.

Gary Sklar, VP of Sales

 gary.sklar@gerimed.com

 781.760.1931



Choices ■ Solutions ■ Savings



Hospitality for the Best in Senior Living



ENHANCE YOUR DINING EXPERIENCE

Contact Den Miciletto • dmiciletto@leadingageny.org • 917.370.6518



SCAN ME



Upcoming Events

Don't miss out on these key events that bring our community together to celebrate, learn, and grow.

October 27-30, 2024

LeadingAge National Annual Meeting, Nashville, TN

October 28, 2024

New England States Night Out, Nashville, TN

SAVE THE DATE- March 18, 2025

Senior Living Symposium

Congratulations to LeadingAge MA for
70 years of service!

onepoint
PARTNERS

INTEGRATED STRATEGIC, CAPITAL, DEVELOPMENT,
AND COMMUNITY PERFORMANCE ADVISORY SERVICES

REIMAGINING SENIOR LIVING



LeadingAge®

Massachusetts

2024 Annual Business Partners

Platinum Partners



Trusted partner. Proven outcomes.



Insurance Brokerage ■ Risk Mitigation ■ Special Risks



ATLANTIC CHARTER

INSURANCE COMPANY



Ziegler

CAPITAL :: INVESTMENTS :: ADVICE

Gold Partners



Borislow

INSURANCE

**DIMELLA
SHAFFER**





Annual Meeting Sponsors

LeadingAge Massachusetts thanks
the following Annual Meeting
sponsors for their generous support of
this year's event!

Champagne Sponsor

Alliance Health Management Services

Full Table Sponsors

Lasell Village

Brookhaven at Lexington

Overlook Masonic Health System

Fairing Way & Dwyer Home

Fox Hill Village

Rogerson Communities

Hebrew SeniorLife

Deaconess Abundant Life Communities

Legacy Lifecare

Notre Dame Health Care

Sherrill House

Mary Ann Morse

Half Table Sponsors

Carleton Willard Village

North Hill

Ascentria Care Alliance

CSI Support & Development Coop

The Carmelite System

The Berkeley Retirement & Nursing Home

Business Member Sponsors

Geriatric Medical

LWDA

HJ Sims

Strategic Care Solutions

One Point Partners