

N A S N
2 0 1 7

1st North American Social Networks Conference – NASN2017

Kimpton Palomar, Washington, DC, 26-30 July 2017



2017 Conference Organizers

Ian McCulloh, Johns Hopkins University

Kimberly Glasgow, Johns Hopkins University

Carl Latkin, Johns Hopkins University

FINAL PROGRAM

The Organizers

| Name | Affiliation | Email | Role/Duties |
|-----------------------|---------------|---|------------------------|
| Ian McCulloh | JHU, JHU/APL | ian.mcculloh@jhuapl.edu | Co-chair |
| Kim Glasgow | JHU/APL | Kimberly.glasgow@jhuapl.edu | Co-chair |
| Carl Latkin | JHU | carl.latkin@jhu.edu | Co-chair |
| Kate Coronges | Northeastern | kcoronges@gmail.com | Advisor (Sunbelt Org) |
| Kayla de la Haye | USC | kayla.delahaye@gmail.com | Advisor (Sunbelt Org) |
| Marilyn Atchue-Zuill | | MAtchue-Zuill@hpnglobal.com | Event Planner |
| David Lazer | Northeastern | davelazer@gmail.com | Keynote Speaker |
| Alicia Bargar | JHU/APL | Alicia.bargar@jhuapl.edu | Abstract Review |
| Christine Sowa | JHU/APL | Christine.Sowa@jhuapl.edu | Abstract Review |
| Elizabeth Humberstone | JHU | ehumber3@jhu.edu | Marketing/Registration |
| Cory Bradley | JHU | cbradl21@jhu.edu bradley@corybradley.com | Hospitality Suite |
| Farid Ahmed | JHU/APL | Farid.Ahmed@jhuapl.edu | |
| Shweta Bansal | Georgetown | shweta.bansal@gmail.com | |
| Janis Butkevics | JHU/APL | Janis.Butkevics@jhuapl.edu | |
| Stephen Eubank | Virginia Tech | eubank@bi.vt.edu | |
| Stephane Helleringer | JHU | Sheller7@jhu.edu | |
| Tony Johnson | JHU/APL | Anthony.Johnson@jhuapl.edu | |
| Hongjie Liu | UMD | hliu1210@umd.edu | |
| John Piorkowski | JHU, JHU/APL | John.Piorkowski@jhuapl.edu | |
| Jack Sandberg | GWU | jsandber@gwu.edu | |
| Jennifer Victor | GMU | jvictor3@gmu.edu | |
| Cui Yang | JHU | cyang29@jhu.edu | |

Thanks to Steve Borgatti, Laura Koehly, and Tom Valente for their support and guidance in organizing this conference. Special thanks to Becca Davis who provided important guidance regarding facilities, budgets, events, and procedures.



This conference was supported by a generous grant from the

U.S. Army Research Office,
Research Triangle Park, NC.

Dear Colleagues,

Welcome to the first ever North American Social Networks (NASN) Conference!

Your registration package consists of this printed program, a name tag, and tickets for the banquet and/or workshops if you registered for them. Full abstracts are available on the conference website: www.insna.org/nasn2017/program/.

Please review the program for any updates or changes. Additional changes may be posted at the registration desk as necessary.

NASN is a conference of the International Network for Social Network Analysts (INSNA). As such, there are several "Sunbelt" traditions that we would like to highlight:

- Oral presentations are to start and stop at the stated program times, as attendees often move between sessions to catch papers of interest.
- The named session chairs (or last presenter in a session) are asked to keep the session presenters on time.
- If you are presenting a talk, please load your presentation slides on the dedicated laptop connected to the projector 10 minutes before the session starts. If you need to use your own laptop this will cut into your 20-minute presentation time.
- Lunch breaks are over 1 hour to give you enough time to enjoy Washington DC, your colleagues, and the historic sites nearby.
- There is a hospitality suite Thursday through Saturday evening, from 9pm to 12am, in the hotel Penthouse Suite. We ask that you cooperate with our student assistants who will close the suite at 12am.

If you have any questions about the conference, please look out for the organizers.

Thank you for your attendance and contribution to this conference. We hope that you enjoy Washington and find this conference to be a valuable experience.

Kind Regards,

Ian McCulloh
Kimberly Glasgow
Carl Latkin

Table of Contents

| | |
|--|----|
| The Organizers | 1 |
| Sponsors | 4 |
| Poster Session and Wine Reception Sponsor..... | 4 |
| Breakfast Sponsor | 4 |
| Coffee Sponsors | 4 |
| General Sponsor..... | 4 |
| Hotel Map/Layout | 5 |
| Program Overview | 6 |
| Workshops..... | 7 |
| Keynote Speaker..... | 8 |
| Parallel Oral Presentations..... | 9 |
| Thursday AM1..... | 9 |
| Thursday AM2..... | 10 |
| Thursday PM1..... | 11 |
| Poster Session, Wine Reception, and Network Slam | 11 |
| Hospitality Suite..... | 11 |
| Friday AM1..... | 12 |
| Friday AM2..... | 13 |
| Friday PM1 | 14 |
| Friday PM2 | 15 |
| Keynote Speaker..... | 15 |
| Banquet | 15 |
| Hospitality Suite..... | 15 |
| Saturday AM1..... | 16 |
| Saturday AM2..... | 17 |
| Saturday PM1 | 17 |
| Saturday PM2 | 18 |
| Hospitality Suite..... | 18 |
| Posters..... | 19 |
| Author Index..... | 20 |
| Recommendations for Eating, Drinking, Entertainment..... | 24 |

Sponsors

We would like to offer a special thanks to our sponsors:

Poster Session and Wine Reception Sponsor



JOHNS HOPKINS
APPLIED PHYSICS LABORATORY

Breakfast Sponsor



Coffee Sponsors



NETWORK
c a n v a s
Supported by a grant from
National Institute of Health (NIH)
National Institute on Drug Abuse
R01 DA042711

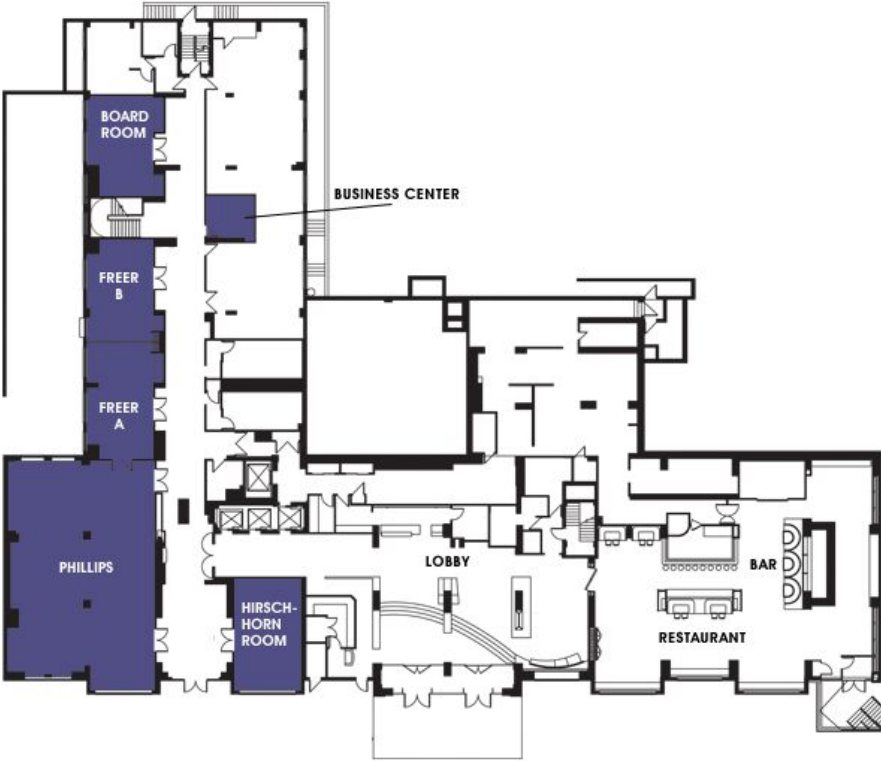


General Sponsor



THE NATIONAL CAPITAL-AREA POLITICAL SCIENCE ASSOCIATION
Delaware • District of Columbia • Maryland • Pennsylvania • Virginia • West Virginia

Hotel Map/Layout



First Floor



Second Floor

Program Overview

| DATE | MORNING | AFTERNOON | EVENING |
|-------------------|------------------------------------|--------------------|--------------------------------------|
| Wednesday, 26 JUL | Registration Workshops | Workshops | Workshops |
| Thursday, 27 JUL | Registration Oral Presentations | Oral Presentations | Wine & Poster Session Hospitality |
| Friday, 28 JUL | Registration Oral Presentations | Oral Presentations | Keynote Banquet Hospitality |
| Saturday, 29 JUL | Registration Oral Presentations | Oral Presentations | Hospitality |
| Sunday, 30 JUL | Network Stories | Close | - |

Conference Registration will be open from 7:30am – 5 pm, Wednesday thru Saturday in the National Ballroom Foyer (**On Wednesday breakfast and breaks will be in both ballroom foyers**)

Breakfast will be served each morning from 7:30am – 8:30 am in the National Ballroom Foyer

Coffee Breaks will be held in the National Ballroom Foyer

Wifi. Attendees who are registered at the Kimpton will receive wifi details upon check-in at the hotel. Other attendees can ask for wifi details at the conference registration desk.

Workshops

| Wednesday, July 26 | | |
|--|--|--|
| 9:00 - 12:00 | 1:00 - 4:00 | 4:00 - 7:00 |
| Intro to Exponential family Random Graph Models (ERGMs) for Social Networks | Intro to Temporal ERGMs (TERGMs) for Dynamic Social Networks | Analyzing Egocentrically Sampled Network Data Using ERGMs and TERGMs |
| A Hands-on Introduction to Analyzing Social Networks with UCINET & Netdraw | | Basic and Advanced Network Visualization with R |
| Dynamic Network Analysis and ORA | | Charting Collections in Social Media: Creating Maps and Measures with NodeXL |
| EgoWeb 2.0: Flexible and User Friendly Social Network Data Collection Software | Constructing Ego Networks from Retweets | Mixed Methods Research in Social Networks |
| Network Approaches for Behavior Change | Understanding Diffusion with netdiffuseR | Social Media Analytics During Crises |
| Agent-Based Models in Social Network Analysis Using NetLogo | | Generating and Analyzing Scientific Networks with <i>Metaknowledge</i> |

Keynote Speaker

David Lazer

Friday, 28 JULY, 5:30PM
National Ballroom



David Lazer is Distinguished Professor of Political Science and Computer and Information Science, Northeastern University, and Co-Director, NULab for Texts, Maps, and Networks. Prior to coming to Northeastern University, he was on the faculty at the Harvard Kennedy School (1998-2009). His research has been published in such journals as *Science*, *Proceedings of the National Academy of Science*, the *American Political Science Review*, *Organization Science*, and the *Administrative Science Quarterly*, and has received extensive coverage in the media, including the *New York Times*, NPR, the *Washington Post*, the *Wall Street Journal*, and CBS Evening News. He is lead author on the 2009 *Science* paper on computational social science, which has been described as the manifesto for the emerging field, as well as the paper in *Science* in 2014 that critiqued Google Flu Trends. His online experimental work on deliberation garnered best paper of the year in the *American Political Science Review*, and his research on exploration and exploitation has been highly cited within the literature on collective intelligence. He has been PI on more than \$10M of federal grants. Dr. Lazer serves in multiple leadership and editorial positions, including as a board member for the International Network of Social Network Analysts (INSNA), reviewing editor for *Science*, associate editor of *Social Networks and Network Science*, numerous other editorial boards and program committees.

Parallel Oral Presentations

Thursday AM1

| | Innovations in Social Network Based Interventions | Negative Ties and Signed Graphs | Egocentric Network Analysis |
|-----------|--|---|---|
| Time | National Ballroom | Corcoran | Kreeger |
| 0730-0830 | Breakfast | | |
| 0830-0850 | A Pilot Test of a Motivational Interviewing Social Network Intervention to Reduce Substance Use among Housing First Residents <i>(David Kennedy, Karen Osilla, Hunter Sarah, Daniela Golinelli, Ervant Maksabedian and Joan Tucker)</i> | A sign of the times? Alliances and antagonisms in the U.S. Congress, 1973-2016 <i>(Zachary Neal)</i> | Towards a Multilevel Analysis for Egocentric Network Data: An application of Multiple Membership Multiple Classification (MMMC) <i>(Ly Dinh and William C. Barley)</i> |
| 0850-0910 | Finding Strategic Locations for Planting Seeds of Contagion <i>(Scott Feld)</i> | With Friends Like These: Aggression from Equivalence and Amity <i>(Robert Faris, Diane Felmler and Cassie McMillan)</i> | Free Network Drawings - Capabilities and Implications for Collecting Ego Network Data <i>(Tom Toepfer)</i> |
| 0910-0930 | Capitalizing on small worlds: A network intervention to narrow the communication gap between researchers and public school educators <i>(Jennifer Watling Neal, Zachary Neal, Jennifer Lawlor, Katie McAlindon and Kristen Mills)</i> | The Cost of Ties: Explaining balance and status in signed tie formation <i>(Nicholas Harrigan, Janice Yap, Bing Yang Tan and Yu Xun Tan)</i> | Spatial and social embeddedness of emergency contact ties <i>(Emily Smith, Carter Butts, John Hipp and Nicholas Nagle)</i> |
| 0930-0950 | Estimating Spillover Effects in Network Interventions with Non-Random Assignment: The Effects of a Field Intervention on Gunshot Victimization <i>(George Wood, Yanick Charette and Andrew Papachristos)</i> | A Triadic View of Political Power in Signed Graphs: Exploring the Political Independence Index in the International Geopolitical Context <i>(Giuseppe Labianca, Filip Agneessens, Jesse Fagan, Daniel Halgin, Theresa Floyd, Alexandra Gerbasi and Carlo Labianca)</i> | Closeness and role as key organizing principles in graph drawing <i>(Bernie Hogan, Paolo Simonetto, Daniel Archambault, Helen Purchase, Stephen Kobourov, Patrick Janulis and Joshua Melville)</i> |
| 0950-1010 | PrEP-Chicago: A diffusion of innovation based intervention for HIV prevention among young men who have sex with men <i>(John Schneider, Matthew Ferreira and Lindsay Young)</i> | Examining the Unique Properties of Negative Tie Cognitive Social Structure <i>(Joshua Marineau)</i> | Dynamics of Social Networks Following Adolescent Pregnancy <i>(Elizabeth Humberstone)</i> |
| 1010-1040 | Coffee Break | | |

Thursday AM2

| | LGBTQ Networks, Health, and Social Support | Assessing Credibility and Responding to Misinformation in Online Social Platforms | Defense |
|-----------|--|---|--|
| Time | National Ballroom | Corcoran | Kreeger |
| 1040-1100 | Saunas, bars or dating apps: Human papillomavirus detection in men who have sex with men in association with where one meets his sexual partners <i>(Carol Strong, Ya-Lun Liang and Zong-Rong Lee)</i> | Leveraging Multiple Social Media Platforms for Evaluating Story Credibility <i>(Cody Buntain)</i> | Network Analysis in the Study of Forced Migration <i>(Melonie Richey and Dawn Wozneak)</i> |
| 1100-1120 | Influence of sexual network characteristics on willingness to use PrEP among MSM in Tijuana, Mexico <i>(Heather Pines, Britt Skaathun, David Smith, James Fowler, Alicia Harvey-Vera, Gudelia Rangel, Shirley Semple and Thomas Patterson)</i> | Observational evidence of “selective sharing” on social media <i>(Julia Kamin)</i> | Dealing with overlapping categorical attribute data <i>(Martin Everett and Steve Borgatti)</i> |
| 1120-1140 | HIV-related behaviors and peer network exposure on Facebook: The networked contexts of peer influence in a multidimensional online social networking environment among young Black men who have sex with men (YBMSM) <i>(Lindsay Young, Kayo Fujimoto and John Schneider)</i> | Botnets and Propaganda Dissemination <i>(Rick Galeano, Dr. Nitin Agarwal and Samer Al-Khateeb)</i> | <p>Department of Defense Funders Panel</p> <p>(Andrew Slaughter, ARI Edward Palazollo, ARO Liz Bowman, ARL Ben Knott, AFOSR)</p> |
| 1140-1200 | Social capital and HIV-serodiscordance: Differences in the access to personal and professional resources for HIV-positive and HIV-negative partners <i>(James Iveniuk, Liviana Calzavara, Sandra Bullock, Joshua Mendelsohn, Dan Allman, Ann Burchell, Laura Bisailon, Amrita Daftary, Bertrand Lebouché, Renée Masching, Tamara Thompson, Jocelyn Watchorn and The Positive Plus One Team)</i> | Framing and Collective Action <i>(Gunes Ertan)</i> | |
| 1200-1220 | “Everybody puts their whole life on Facebook”: Identity management and the online social networks of LGBTQ youth <i>(Elizabeth McConnell, Balint Neray, Kai Korpak, Antonia Clifford and Michelle Birkett)</i> | Exploring Alt-News Article Citation Network <i>(Janis Butkevics and Beatrice Garcia)</i> | |
| 1220-1400 | Lunch | | |

Thursday PM1

| | Financial Networks | Modeling Networks | Health |
|-----------|--|--|--|
| Time | National Ballroom | Corcoran | Kreeger |
| 1400-1420 | Pricing Network Effects: Competition <i>(Itay Fainmesser and Andrea Galeotti)</i> | Network Influences on Policy Implementation: Evidence from a Global Health Treaty <i>(Thomas Valente, Stephanie Pitts, Heather Wipfli and George G. Vega Yon)</i> | The Diffusion of EHR Incentive Programs in Physician Patient-Sharing Networks <i>(Meng-Hao Li)</i> |
| 1420-1440 | Network Reactions to Banking Regulations <i>(Selman Erol and Guillermo Ordonez)</i> | Analyzing Published Global Ebola Virus Disease Research Using Social Network Analysis <i>(Christiane Hagel, Peter Tinnemann, Felix Weidemann, Stephan Gauch and Suzanne Edwards)</i> | Bringing voice in policy building: Using Group Concept Mapping to create a cross-population multi-stakeholder conceptual model for management of acute unscheduled care in the United States <i>(Gaetano Romano Lotrecchiano, Mary Kane, Mark S Zocchi, Jessica Gosa, Danielle Lazar and Jesse Pines)</i> |
| 1440-1500 | Stable Networks with Local Social Rankings <i>(Chen Cheng and Yiqing Xing)</i> | Global Networks of Science and Future Science Policy: The Role of U.S. Research Universities in Collaboration and Internationalization of New Scientific Knowledge <i>(Alina Lungeanu, Yuan-Chih Fu, Liang Zhang and David Baker)</i> | National Institute of Health (NIH) Funders Panel (Kayla de la Haye) |
| 1500-1520 | Sustaining Cooperation with Multiple Relationships <i>(Chen Cheng, Wei Huang and Yiqing Xing)</i> | Approximate Variational Estimation for a Model of Network Formation <i>(Angelo Mele and Lingjiong Zhu)</i> | |
| 1520-1540 | Director Appointments – It is Who You Know <i>(Jay Cai, Tu Nguyen and Ralph Walkling)</i> | Modeling the Effects of Research Assessments on Scientific Collaboration. The Case of the British “Research Excellence Framework” <i>(Raphael H. Heiberger and Oliver Wieczorek)</i> | |
| 1540-1600 | Coffee Break | | |

Poster Session, Wine Reception, and Network Slam

1700-1800 Phillips Ballroom

Hospitality Suite

2100-2400 Penthouse Suite

Friday AM1

| | Political Discourse | Global Conflicts 1 | Organizational Networks |
|-----------|---|--|--|
| Time | National Ballroom | Corcoran | Kreeger |
| 0730-0830 | Breakfast | | |
| 0830-0850 | Digital Media in Greece: Cyberconflict, networks and discourse <i>(Ioanna Ferra)</i> | Infighting and Network Structure in the Syrian Insurgency <i>(Michael Gabbay, Emily Gade and Mohammed Hafez)</i> | Contingent Career Benefits of Information Diversity and Information Novelty During an Organizational Merger <i>(Jesse Fagan, Andrew Shipilov and Joe Labianca)</i> |
| 0850-0910 | Radical Right Media and Politicians within the Hungarian Media Network <i>(Attila Farkas)</i> | Creating Network-Based Communication Interventions to Increase Community Resilience: A Demonstration for an African Nation Recovering from Muslim-Christian Civil War <i>(James Danowski)</i> | Using electronic trace data to study social network changes related to an open office environment <i>(Alex Perrone, Nathan Bos and Ariel Greenberg)</i> |
| 0910-0930 | “Voters of the Year”: 19 Voters Who Were Unintentional Election Poll Sensors on Twitter <i>(William Hobbs, Lisa Friedland, Kenneth Joseph, Oren Tsur, Stefan Wojcik and David Lazer)</i> | War by Other Means: Networks of Diplomacy and their Effects on War and Peace, 1648-1815 <i>(Michael Schultz and Jonah Stuart Brundage)</i> | Characterization of the strength of ties in the context of evaluating the Children’s Mental Health Initiative Systems of Care <i>(Grace Huang, Sushama Rajapaksa, Joselin Bravo, Preethy George and Chandria Jones)</i> |
| 0930-0950 | A Twitter Social Contagion Monitor <i>(Vladimir Barash, Aurora Schmidt, Clayton Fink, Christopher Cameron, Wei Dong, John Kelly and Michael Macy)</i> | Evaluating Policy Networks in Afghanistan and Pakistan: A Relational Assessment of Aid-Impact in Fragile States <i>(Elsa T. Khwaja)</i> | Self-Organised Networks at the Edge of Chaos: A New Perspective for Managing Complex Construction Projects <i>(Huda Almadhoob and Stephen Pryke)</i> |
| 0950-1010 | Social Media Firestorms <i>(Alicia Bargar, Rich Takacs, Brant Chee, David Silberberg and Ian McCulloh)</i> | Combining Agent-based Modeling with Social Network Analysis to Reproduce an ISIS Social Media Network <i>(Joseph Shaheen)</i> | Evaluating Institutional Coalescence with the Aid of Exponential Random Graph Models <i>(Philip Murphy, Fernando Depaolis and Brendan Knapp)</i> |
| 1010-1040 | Coffee Break | | |

Friday AM2

| | Theory | Network Dynamics | Model Validity |
|-----------|---|--|--|
| Time | National Ballroom | Corcoran | Kreeger |
| 1040-1100 | PDGM: Percolation-based Directed Graph Matching in Social Networks <i>(Lijing Wang, Jin-Hee Cho, Ing-Ray Chen and Jiangzhuo Chen)</i> | How I stopped worrying and learned to love the passage of time <i>(Maksim Tsvetovat)</i> | On the Validity of the Bayesian Network Accuracy Model <i>(Francis Lee and Carter T. Butts)</i> |
| 1100-1120 | Graph properties affecting link analysis <i>(Anthony Johnson, Nathan Bos, Rebecca Rhodes and Isaiah Harbison)</i> | The role of temporal data and the patterns of interaction in the interpretation tie strength and stability <i>(Michael Penta)</i> | Tools for Assessing the Model Adequacy of Exponential Graph Models (ERGMs) and Comparing Sets of Networks Using Labeled Features <i>(Nolan Phillips and Carter Butts)</i> |
| 1120-1140 | Vertex Nomination Via Local Neighborhood Matching <i>(Heather Patsolic, Youngser Park, Vince Lyzinski and Carey Priebe)</i> | Varying-Coefficient Models for Dynamic Networks <i>(Jihui Lee, Gen Li and James D. Wilson)</i> | Determining consistency of a network model with a particular contact network <i>(Madhurima Nath, Yihui Ren and Stephen Eubank)</i> |
| 1140-1200 | An efficient counting method for the colored triad census <i>(Jeffrey Lienert, Laura Koehly, John Finney, Christopher Marcum and Felix Reed-Tsochas)</i> | N-Human Dynamical Influential System and Model <i>(Ridwan Jalali)</i> | Goodness-of-Fit Testing for Behavior in Joint Dynamic Network/Behavior Models with an Extension to Two-Mode Networks <i>(Cheng Wang, Carter T. Butts, John R. Hipp, Rupa Jose and Cynthia M. Lakon)</i> |
| 1200-1220 | Matched bipartite block model with covariates <i>(Zahra Razaee, Arash Amini and Jingyi Jessica Li)</i> | Alignment-induced analysis of Dynamics in Spatial Social Networks <i>(Edwin Vargas)</i> | Comparing network clustering methods with human perception <i>(Nathan Bos, Anthony Johnson, Rebecca Rhodes and Isaiah Harbison)</i> |
| 1220-1400 | Lunch | | |

Friday PM1

| | Management and Influence | Adolescent Networks | Global Conflicts 2 |
|-----------|---|--|--|
| Time | National Ballroom | Corcoran | Kreeger |
| 1400-1420 | Leveraging Social Network Analysis & Cyber Forensics Approaches to Study Cyber Propaganda Campaigns <i>(Samer Al-Khateeb, Muhammad Hussain and Nitin Agarwal)</i> | The diffusion of smoking initiation among diverse, urban American adolescents over the high school period <i>(Kayla de La Haye, Hee-Sung Shin, George Vega Yon and Thomas Valente)</i> | Cyber Aggression and the Language of Dark Personalities among Russian Facebook Users <i>(Olga Bogolyubova, Yanina Ledovaya, Polina Panicheva and Roman Tikhonov)</i> |
| 1420-1440 | The effect of FDA recalls on the strategic alliance networks in the medical device industry <i>(Angelo Mele and Shweta Gaonkar)</i> | Popularity in Context: Global and Local Status in Adolescent Friendship Networks <i>(James Murphy)</i> | Influence Power and Allegiances: Let the Model Fit the Culture <i>(Gwyneth Sutherland)</i> |
| 1440-1500 | The Role of Twitter in the 2016 U.S. Congressional Races <i>(Yotam Shmargad, Jordan Bruce, Zuleima Cota, Erman Gurses, Jeff Jensen, Colin Kyle, Don-E Merson, Lance Sacknoff, Farig Sadeque, Karthik Srinivasan and Limin Zhang)</i> | Roma Undergraduates' Personal Network in the Process of College Transition. A Social Capital Approach. <i>(Bea David and Agnes Lukacs)</i> | Transitivity of Joint Interests among Key Actors in Conflict Syria and Iraq: Implications for a Post-ISIS Middle East <i>(Lawrence A. Kuznar and Allison Astorino-Courtois)</i> |
| 1500-1520 | Mapping the Political Economic Landscape of Educational Technology: A Networks Perspective <i>(Priscilla M. Regan and Elsa T. Khwaja)</i> | Friendship relationship formation in Year 1 students <i>(Daniel Tischer and David Hughes)</i> | Network visualization for military planners <i>(Ian McCulloh)</i> |
| 1520-1540 | Oligarch Networks <i>(John Sutherland Earle, Scott Gehlbach, Anton Shirikov and Solomiya Shpak)</i> | Caregiving networks of children affected by inborn errors of metabolism <i>(Laura Koehly, Kathleen Marcum, Mindy Perilla, Hena Thakur, Jennifer Cleary, Sarah Sadozai, Dawn Lea, Betina Hollstein and Christopher Marcum)</i> | Geospatial and Social Network Causes of Group Violence <i>(Christopher J. Callaghan, Daniel Cunningham, Sean F. Everton and Kristen Tsois)</i> |
| 1540-1600 | Coffee Break | | |

Friday PM2

| | Political Discourse | Health | Panel |
|-----------|--|--|--|
| Time | National Ballroom | Corcoran | Kreeger |
| 1600-1620 | Evaluating Political Party Cohesion Using Exponential Random Graph Modeling <i>(Shambavi Sadayappan and Ian McCulloh)</i> | A Bayesian Model for Multiple Informant Family Health History Prediction <i>(Christopher Marcum, Jielu Lin, Melanie Myers and Laura Koehly)</i> | Exploring Network Approaches to Science and Innovation (Jonathon E. Mote and C. Scott Dempwolf) |
| 1620-1640 | Detecting and Exploring Networks of Justice Discourse in Social Media <i>(Kimberly Glasgow)</i> | Disparities in Slum Health and Its Impact on Larger Urban Regions <i>(Shuyu Chu, Christopher Kuhlman and Achla Marathe)</i> | |
| 1640-1700 | Group Polarization in Opinion Network Dynamics <i>(Michael Gabbay, Zane Kelly, Justin Reedy and John Gastil)</i> | A Framework for Learning Health Disparities Among Cohorts in An Influenza Epidemic <i>(Lijing Wang, Jiangzhuo Chen and Achla Marathe)</i> | |

Keynote Speaker

1730-1830 National Ballroom

Banquet

1900-2030 Phillips Ballroom

Hospitality Suite

2100-2400 Penthouse Suite

Saturday AM1

| | Teams | Social Experience | Vizards |
|-----------|---|--|-----------------------------------|
| Time | National Ballroom | Corcoran | Kreeger |
| 0730-0830 | Breakfast | | |
| 0830-0850 | Network Structure Explains the Relationship between Social Abilities and Team Performance <i>(Jennifer Labrecque and Kayla de La Haye)</i> | Secondhand Social Capital: Boundary Spanning, Secondhand Closure, and Individual Performance <i>(Neha Shah, Daniel Levin and Rob Cross)</i> | Vizards Session (Ian McCulloh) |
| 0850-0910 | | The Friend of My Friend is My Enemy?: Modeling and Analyzing Social Balance in an Online Community <i>(Christine Sowa and Ian McCulloh)</i> | |
| 0910-0930 | Coevolution of interpersonal perceptions and team structure in long-duration space exploration missions <i>(Igor Zakhlebin, Alla Vinokhodova, Vadim Gushin, Suzanne Bell, Leslie Dechurch and Noshir Contractor)</i> | The social consequences of networked individualization <i>(Snorre Ralund)</i> | |
| 0930-0950 | Looking across borders: Antecedents of interterm advice seeking <i>(Evgenia Dolgova, Dianne Bevelander, Michael Page and Karen Stephenson)</i> | Corrosive Density <i>(Yotam Shmargad and Jameson Watts)</i> | |
| 0950-1010 | “Social smarts” shape social networks <i>(Kayla de La Haye and Jennifer Labrecque)</i> | Collectivism, Social Stigma, and Structural Holes among Old Female Sex Workers in China <i>(Yuruo Li and Hongjie Liu)</i> | |
| 1010-1040 | Coffee Break | | |

Saturday AM2

| | Workplace and Academia | Activism | Local Resiliency |
|-----------|--|---|---|
| Time | National Ballroom | Corcoran | Kreeger |
| 1040-1100 | Finding A Place: New Teachers' Integration Into Their Schools' Work-Related Social Networks <i>(Matthew Shirrell)</i> | Towards an ecology of ties: How weak ties challenge activist sustainment <i>(Hjamar Bang Carlsen and Snorre Ralund)</i> | Connective Recovery in Social Networks After the Death of a Friend <i>(William Hobbs and Moira Burke)</i> |
| 1100-1120 | The Role of Brokers in Academic Network Building <i>(Diego Gomez-Zara, Wouter Vermeer, Zachary Gibson, Connor Bain, Gabriella Anton, Leslie Dechurch, Uri Wilensky and Noshir Contractor)</i> | When Theory Meets Practice: Exploring Challenges to Information Sharing Networks for Community Change <i>(Jennifer Lawlor and Zachary Neal)</i> | Cancer communication networks of rural Appalachian women <i>(Kate Eddens and Jesse Fagan)</i> |
| 1120-1140 | Modeling Network-level Effects on Subgroup Insularity <i>(Tracy Sweet and Qiwen Zheng)</i> | #Unite! Group Identity and Protests in the Internet Era <i>(Alicia Bargara and Jessica Kuperavage)</i> | Socio-Cultural Cognitive Maps <i>(Kathleen Carley)</i> |
| 1140-1200 | Academic Influence of Social Network Sites on the Collegiate Performance of Technical College Students <i>(Jameson McFarlane)</i> | An Analysis of the #BringBackOurGirls Movement Using Spectral Clustering of Tag Adoption <i>(Aurora Schmidt, Clay Fink, Vladimir Barash, Christopher Cameron and Michael Macy)</i> | The Effects of Lay and Formal Support Resources on Recovery from Serious Mental Illness <i>(Erin Pullen and Brea Perry)</i> |
| 1200-1220 | Structured Text Analysis for Evaluating Shared Cognition <i>(Michael Schultz, Leslie Dechurch and Noshir Contractor)</i> | Networks, Epidemics, and the Rise of Christianity <i>(Sean F. Everton and Robert Schroeder)</i> | Modelling the resilience of coastal communities: the co-evolution of cultural views and stakeholder networks <i>(Christina Prell, Michael Paolisso, Katherine Johnson, Klaus Hubacek and Brian Needlerman)</i> |
| 1220-1400 | Lunch | | |

Saturday PM1

| | National Ballroom | Corcoran | Kreeger |
|-----------|--|---|--|
| 1400-1420 | Research Speed Dating (Ian and Kim) | Making SNA Elementary | Dark Networks Panel (Adam Jonas, TRADOC Tom Valente, USC Jon Roginski, USMA Kathleen Carley, CMU Sean Everton, NPS) |
| 1420-1440 | | Middle/High School Outreach | |
| 1440-1500 | | STEM Education | |
| 1500-1520 | | Reaching Underserved Populations with SNA | |
| 1520-1540 | | (Tony Johnson and Cory Bradley) | |
| 1540-1600 | Coffee Break | | |

Saturday PM2

| | Diversity in Research | Machine Learning | Trade and Transportation |
|-----------|---|--|--|
| Time | National Ballroom | Corcoran | Kreeger |
| 1600-1620 | A Network View of Epistemology: Uncovering Patterns of Race, Gender, and Sexuality Inequality in the Production of Knowledge <i>(Jasmina Tacheva and Tanya Loughead)</i> | | Uncovering the spatially distant feedback loops of global trade: A network and input-output approach <i>(Christina Prell, Kuishuang Feng, Klaus Hubacek and Laixiang Sun)</i> |
| 1620-1640 | Cultivating the Conference Culture: The Role of Diversity in Interdisciplinary Meetings <i>(Zachary Gibson, Gabriella Anton, Wouter Vermeer, Diego Gómez-Zarà, Connor Bain, Leslie Dechurch, Uri Wilensky and Noshir Contractor)</i> | Author Attribute Classification for Social Media <i>(Thomas Lippincott, Nicholas Andrews and Benjamin Van Durme)</i> | Globalization, Trade Networks, and Regional Trade Blocs: Alternative Routes to Development <i>(Martin Jacinto)</i> |
| 1640-1700 | Assessing Race Differences and Experimental Effects of Question Phrasing on Personal Networks using Mechanical Turk <i>(Jerreed Ivanich, Michael Siciliano and Marina Stavrakantonaki)</i> | Image Classification Based Social Network Analysis Constructs <i>(Rich Takacs, Janis Butkevics, Christine Sowa, Stephanie Pitts and Ian McCulloh)</i> | All Roads Lead to Rome: The Story of How Transportation Network Induces Agglomeration <i>(Ahmed Mahmud and Sumit Joshi)</i> |

Hospitality Suite

2100-2400 Penthouse Suite

Posters

Thursday, 27 JULY, 5PM-6PM, Phillips Ballroom

Wine reception will be held during the poster session

| Title | Authors |
|---|--|
| An Analysis of Network Structure and Characteristics of Academic Areas in Korea | Minki Kim |
| Analysis of Network Influence on Legislation of Science and Technology in Korea – Focused on National Assembly Members | Seung Tai Kim and Su Hyeon Jung |
| The Social Networks of Individuals with Down Syndrome | Anne Roll |
| Measuring Relationalized Respeto and Understanding Its Impact on Smoking Behavior Among Mexican Heritage Adults Residing in the United States | Hena Thakur, Jeffrey Lienert, Christopher Marcum, Alexander Prokhorov, Anna Wilkinson and Laura Koehly |
| Using a Network Approach to Explore Coping Resources Needed by Families Affected by Inborn Errors of Metabolism | Jennifer Cleary, Hena Thakur, Pearl Eni, Jeffrey Lienert, Dawn Lea, Christopher Marcum and Laura Koehly |
| An Applied Social Network Analysis of how College Application Patterns vary by Geography and Information | Daniel Klasik |
| Agricultural Resource Networks of Kenyan Smallholder Farmers | Stacey Giroux and Tom Evans |
| Socioeconomic disparities in geographic access to HIV/AIDS prevention and care services provided by a health service network serving young Latino MSM | Mariano Kanamori, Kayo Fujimoto, Mark Williams, Sheyla Aguilar de Santana, John Schneider, Mary Jo Trepka and Mario De La Rosa |
| Network Canvas: A comprehensive suite for capturing network data | Patrick Janulis, Gregory Phillips, Joshua Melville, Bernie Hogan, Noshir Contractor, Michael Bass and Michelle Birkett |
| A Rationale for Using Social Network Analysis To Examine The Influence of Social Networks On The Resilience of Grandparents Raising Grandchildren | Nancy Mendoza and Christine A. Fruhauf |
| Venue avoidance and impact on HIV risk and prevention behavior among young Black MSM | Kayo Fujimoto, Peng Wang, Lisa Kuhns and John Schneiders |
| Organization network analysis, community detection and modularity in graphs | Anshuman Guha and Eyob Gebremariam |
| A comprehensive study on improving supervised feature based link prediction in social networks | Christian Haas and Lale Madahali |

Author Index

| | |
|----------------------------|--|
| Agarwal, Nitin | THUR 1120, FRI 1400 |
| Agneessens, Filip | THUR 0930 |
| Aguilar de Santana, Sheyla | THUR 1700* |
| Al-Khateeb, Samer | THUR 1120, FRI 1400 |
| Allman, Dan | THUR 1140 |
| Almadhoob, Huda | FRI 0930 |
| Amini, Arash | FRI 1200 |
| Andrews, Nicholas | SAT 1620 |
| Anton, Gabriella | SAT 1100, SAT 1620 |
| Archambault, Daniel | THUR 0930 |
| Astorino-Courtois, Allison | FRI 1440 |
| Bain, Connor | SAT 1100, SAT 1620 |
| Baker, David | THUR 1440 |
| Barash, Vladimir | FRI 0930, SAT 1140 |
| Bargar, Alicia | FRI 0950, SAT 1120 |
| Barley, William C. | THUR 0830 |
| Bass, Michael | THUR 1700* |
| Bell, Suzanne | SAT 0910 |
| Bevelander, Dianne | SAT 0930 |
| Birkett, Michelle | THUR 1200, THUR 1700* |
| Bisaillon, Laura | THUR 1140 |
| Bogolyubova, Olga | FRI 1400 |
| Borgatti, Steve | THUR 1100 |
| Bos, Nathan | FRI 0850, FRI 1100, FRI 1200 |
| Bowman, Elizabeth | THUR 1120 |
| Bradley, Cory | SAT 1400 |
| Bravo, Joselin | FRI 0910 |
| Bruce, Jordan | FRI 1440 |
| Bullock, Sandra | THUR 1140 |
| Buntain, Cody | THUR 1040 |
| Burchell, Ann | THUR 1140 |
| Burke, Moira | SAT 1040 |
| Butkevics, Janis | THUR 1200, SAT 1640 |
| Butts, Carter | THUR 0910, FRI 1040, FRI 1100, FRI 1140 |
| Cai, Jay | THUR 1520 |
| Callaghan, Christopher J. | FRI 1520 |
| Calzavara, Liviana | THUR 1140 |
| Cameron, Christopher | FRI 0930, SAT 1140 |
| Carlsen, Hjamar Bang | SAT 1040 |
| Carley, Kathleen | SAT 1120, SAT 1400 |
| Charette, Yanick | THUR 0930 |
| Chee, Brant | FRI 0950 |
| Chen, Ing-Ray | FRI 1040 |
| Chen, Jiangzhuo | FRI 1040, FRI 1640 |
| Cheng, Chen | THUR 1440, THUR 1500 |
| Cho, Jin-Hee | FRI 1040 |
| Chu, Shuyu | FRI 1620 |
| Cleary, Jennifer | THUR 1700*, FRI 1520 |
| Clifford, Antonia | THUR 1200 |
| Contractor, Noshir | THUR 1700*, SAT 0910, |

| | |
|------------------------|--|
| | SAT 1100, SAT 1200, SAT 1620 |
| Cota, Zuleima | FRI 1440 |
| Cross, Rob | SAT 0830 |
| Cunningham, Daniel | FRI 1520 |
| Daftary, Amrita | THUR 1140 |
| Danowski, James | FRI 0850 |
| David, Bea | FRI 1440 |
| de la Haye, Kayla | THUR 1440, FRI 1400, SAT 0830, SAT 0950 |
| De La Rosa, Mario | THUR 1700* |
| Dechurch, Leslie | SAT 0910, SAT 1100, SAT 1200, SAT 1620 |
| Dempwolf, C. Scott | FRI 1600 |
| Depaolis, Fernando | FRI 0950 |
| Dinh, Ly | THUR 0830 |
| Dolgova, Evgenia | SAT 0930 |
| Dong, Wei | FRI 0930 |
| Earle, John Sutherland | FRI 1520 |
| Eddens, Kate | SAT 1100 |
| Edwards, Suzanne | THUR 1420 |
| Eni, Pearl | THUR 1700* |
| Erol, Selman | THUR 1420 |
| Ertan, Gunes | THUR 1140 |
| Eubank, Stephen | FRI 1120 |
| Evans, Tom | THUR 1700* |
| Everett, Martin | THUR 1100 |
| Everton, Sean F. | FRI 1520, SAT 1200, SAT 1400 |
| Fagan, Jesse | THUR 0930, FRI 0830, SAT 1100 |
| Fainmesser, Itay | THUR 1400 |
| Faris, Robert | THUR 0850 |
| Farkas, Attila | FRI 0850 |
| Feld, Scott | THUR 0850 |
| Felmlee, Diane | THUR 0850 |
| Feng, Kuishuang | SAT 1600 |
| Ferra, Ioanna | FRI 0830 |
| Ferreira, Matthew | THUR 0950 |
| Fink, Clayton | FRI 0930, SAT 1140 |
| Finney, John | FRI 1140 |
| Floyd, Theresa | THUR 0930 |
| Fowler, James | THUR 1100 |
| Friedland, Lisa | FRI 0910 |
| Fruhauf, Christine A. | THUR 1700* |
| Fu, Yuan-Chih | THUR 1440 |
| Fujimoto, Kayo | THUR 1120, THUR 1700* |
| Gabbay, Michael | FRI 0830, FRI 1640 |
| Gade, Emily | FRI 0830 |
| Gaetano, Romano | THUR 1420 |
| Galeano, Rick | THUR 1120 |
| Galeotti, Andrea | THUR 1400 |

| | |
|------------------------|-----------------------|
| Gaonkar, Shweta | FRI 1420 |
| Garcia, Beatrice | THUR 1200 |
| Gastil, John | FRI 1640 |
| Gauch, Stephan | THUR 1420 |
| Gebremariam, Eyob | THUR 1700* |
| Gehlbach, Scott | FRI 1520 |
| George, Preethy | FRI 0910 |
| Gerbasi, Alexandra | THUR 0930 |
| Gibson, Zachary | SAT 1100, SAT 1620 |
| Giroux, Stacey | THUR 1700* |
| Glasgow, Kimberly | FRI 1620, SAT 1400 |
| Golinelli, Daniela | THUR 0830 |
| Gómez-Zará, Diego | SAT 1100, SAT 1620 |
| Greenberg, Ariel | FRI 0850 |
| Guha, Anshuman | THUR 1700* |
| Gurses, Erman | FRI 1440 |
| Gushin, Vadim | SAT 0910 |
| Haas, Christian | THUR 1700* |
| Hafez, Mohammed | FRI 0830 |
| Hagel, Christiane | THUR 1420 |
| Halgin, Daniel | THUR 0930 |
| Harbison, Isaiah | FRI 1100, FRI 1200 |
| Harrigan, Nicholas | THUR 0910 |
| Harvey-Vera, Alicia | THUR 1100 |
| Heiberger, Raphael H. | THUR 1520 |
| Hipp, John | THUR 0910, FRI 1140 |
| Hobbs, William | FRI 0910, SAT 1040 |
| Hogan, Bernie | THUR 0930, THUR 1700* |
| Hollstein, Betina | FRI 1520 |
| Huang, Grace | FRI 0910 |
| Huang, Wei | THUR 1500 |
| Hubacek, Klaus | SAT 1200, SAT 1600 |
| Hughes, David | FRI 1500 |
| Humberstone, Elizabeth | THUR 0950 |
| Hussain, Muhammad | FRI 1400 |
| Ivanich, Jerreed | SAT 1640 |
| Iveniuk, James | THUR 1140 |
| Jacinto, Martin | SAT 1620 |
| Jalali, Ridwan | FRI 1140 |
| Janulis, Patrick | THUR 0930, THUR 1700* |
| Jensen, Jeff | FRI 1440 |
| Johnson, Anthony | FRI 1100, FRI 1200 |
| Johnson, Katherine | SAT 1200 |
| Johnson, Tony | SAT 1400 |
| Jonas, Adam | SAT 1400 |
| Jones, Chandria | FRI 0910 |
| Jose, Rupa | FRI 1140 |
| Joseph, Kenneth | FRI 0910 |
| Joshi, Sumit | SAT 1640 |
| Jung, Su Hyeon | THUR 1700* |
| Kamin, Julia | THUR 1100 |
| Kanamori, Mariano | THUR 1700* |
| Kelly, John | FRI 0930 |
| Kelly, Zane | FRI 1640 |
| Kennedy, David | THUR 0830 |

| | |
|--------------------------|---|
| Khwaja, Elsa T. | FRI 0930, FRI 1500 |
| Kim, Minki | THUR 1700* |
| Kim, Seung Tai | THUR 1700* |
| Klasik, Daniel | THUR 1700* |
| Knapp, Brendan | FRI 0950 |
| Knott, Benjamin | THUR 1120 |
| Kobourov, Stephen | THUR 0930 |
| Koehly, Laura | THUR 1700*, FRI 1140, FRI 1520, FRI 1600 |
| Korpak, Kai | THUR 1200 |
| Kuhlman, Christopher | FRI 1620 |
| Kuhns, Lisa | THUR 1700* |
| Kuperavage, Jessica | SAT 1120 |
| Kuznar, Lawrence A. | FRI 1440 |
| Kyle, Colin | FRI 1440 |
| Labianca, Carlo | THUR 0930 |
| Labianca, Giuseppe | THUR 0930 |
| Labianca, Joe | FRI 0830 |
| Labrecque, Jennifer | SAT 0830, SAT 0950 |
| Lakon, Cynthia M. | FRI 1140 |
| Lawlor, Jennifer | THUR 0910, SAT 1100 |
| Lazer, David | FRI 0910 |
| Lea, Dawn | THUR 1700*, FRI 1520 |
| Lebouché, Bertrand | THUR 1140 |
| Ledovaya, Yanina | FRI 1400 |
| Lee, Francis | FRI 1040 |
| Lee, Jihui | FRI 1120 |
| Lee, Zong-Rong | THUR 1040 |
| Levin, Daniel | SAT 0830 |
| Li, Gen | FRI 1120 |
| Li, Jingyi Jessica | FRI 1200 |
| Li, Meng-Hao | THUR 1400 |
| Li, Yuruo | SAT 0950 |
| Liang, Ya-Lun | THUR 1040 |
| Lienert, Jeffrey | THUR 1700*, FRI 1140 |
| Lin, Jieli | FRI 1600 |
| Lippincott, Thomas | SAT 1620 |
| Liu, Hongjie | SAT 0950 |
| Lotrecchiano, Gaetano R. | FRI 1600 |
| Loughead, Tanya | SAT 1600 |
| Lukacs, Agnes | FRI 1440 |
| Lungeanu, Alina | THUR 1440 |
| Lyzinski, Vince | FRI 1120 |
| Macy, Michael | FRI 0930, SAT 1140 |
| Madahali, Lale | THUR 1700* |
| Mahmud, Ahmed | SAT 1640 |
| Maksabedian, Ervant | THUR 0830 |
| Marathe, Achla | FRI 1620, FRI 1640 |
| Marcum, Christopher | THUR 1700*, FRI 1140, FRI 1520, FRI 1600 |
| Marcum, Kathleen | FRI 1520 |
| Marineau, Joshua | THUR 0950 |
| Masching, Renée | THUR 1140 |
| McAlindon, Katie | THUR 0910 |
| McConnell, Elizabeth | THUR 1200 |

| | |
|------------------------|---|
| McCulloh, Ian | FRI 0950, FRI 1500, FRI 1600, SAT 0830, SAT 0850, SAT 1400, SAT 1640 |
| McFarlane, Jameson | SAT 1140 |
| McMillan, Cassie | THUR 0850 |
| Mele, Angelo | THUR 1500, FRI 1420 |
| Melville, Joshua | THUR 0930, THUR 1700* |
| Mendelsohn, Joshua | THUR 1140 |
| Mendoza, Nancy | THUR 1700* |
| Merson, Don-E | FRI 1440 |
| Mills, Kristen | THUR 0910 |
| Mote, Jonathon E. | FRI 1600 |
| Murphy, James | FRI 1420 |
| Murphy, Philip | FRI 0950 |
| Myers, Melanie | FRI 1600 |
| Nagle, Nicholas | THUR 0910 |
| Nath, Madhurima | FRI 1120 |
| Neal, Jennifer Watling | THUR 0910 |
| Neal, Zachary | THUR 0830, THUR 0910, SAT 1100 |
| Needleman, Brian | SAT 1200 |
| Neray, Balint | THUR 1200 |
| Nguyen, Tu | THUR 1520 |
| Ordonez, Guillermo | THUR 1420 |
| Osilla, Karen | THUR 0830 |
| Page, Michael | SAT 0930 |
| Palazzolo, Edward | THUR 1120 |
| Panicheva, Polina | FRI 1400 |
| Paolisso, Michael | SAT 1200 |
| Papachristos, Andrew | THUR 0930 |
| Park, Youngser | FRI 1120 |
| Patsolic, Heather | FRI 1120 |
| Patterson, Thomas | THUR 1100 |
| Penta, Michael | FRI 1100 |
| Perilla, Mindy | FRI 1520 |
| Perrone, Alex | FRI 0850 |
| Perry, Brea | SAT 1140 |
| Phillips, Gregory | THUR 1700* |
| Phillips, Nolan | FRI 1100 |
| Pines, Heather | THUR 1100 |
| Pitts, Stephanie | THUR 1400, SAT 1640 |
| Prell, Christina | SAT 1200, SAT 1600 |
| Priebe, Carey | FRI 1120 |
| Prokhorov, Alexander | THUR 1700* |
| Pryke, Stephen | FRI 0930 |
| Pullen, Erin | SAT 1140 |
| Purchase, Helen | THUR 0930 |
| Rajapaksa, Sushama | FRI 0910 |
| Ralund, Snorre | SAT 0910, SAT 1040 |
| Rangel, Gudelia | THUR 1100 |
| Razae, Zahra | FRI 1200 |
| Reed-Tsochas, Felix | FRI 1140 |
| Reedy, Justin | FRI 1640 |
| Regan, Priscilla M. | FRI 1500 |

| | |
|----------------------------|-------------------------------------|
| Ren, Yihui | FRI 1120 |
| Rhodes, Rebecca | FRI 1100, FRI 1200 |
| Richey, Melonie | THUR 1040 |
| Roll, Anne | THUR 1700* |
| Roginski, Jonathan | SAT 1400 |
| Sacknoff, Lance | FRI 1440 |
| Sadayappan, Shambavi | FRI 1600 |
| Sadeque, Farig | FRI 1440 |
| Sadozai, Sarah | FRI 1520 |
| Sarah, Hunter | THUR 0830 |
| Schmidt, Aurora | FRI 0930, SAT 1140 |
| Schneider, John | THUR 0950, THUR 1120, THUR 1700* |
| Schroeder, Robert | SAT 1200 |
| Schultz, Michael | FRI 0910, SAT 1200 |
| Semple, Shirley | THUR 1100 |
| Shah, Neha | SAT 0830 |
| Shaheen, Joseph | FRI 0950 |
| Shin, Hee-Sung | FRI 1400 |
| Shipilov, Andrew | FRI 0830 |
| Shirikov, Anton | FRI 1520 |
| Shirrell, Matthew | SAT 1040 |
| Shmargad, Yotam | FRI 1440, SAT 0930 |
| Shpak, Solomiya | FRI 1520 |
| Siciliano, Michael | SAT 1640 |
| Silberberg, David | FRI 0950 |
| Simonetto, Paolo | THUR 0930 |
| Skaathun, Britt | THUR 1100 |
| Slaughter, Andrew | THUR 1120 |
| Smith, David | THUR 1100 |
| Smith, Emily | THUR 0910 |
| Sowa, Christine | SAT 0850, SAT 1640 |
| Srinivasan, Karthik | FRI 1440 |
| Stavrakantonaki, Marina | SAT 1640 |
| Stephenson, Karen | SAT 0930 |
| Strong, Carol | THUR 1040 |
| Stuart Brundage, Jonah | FRI 0910 |
| Sun, Laixiang | SAT 1600 |
| Sutherlin, Gwyneth | FRI 1420 |
| Sweet, Tracy | SAT 1120 |
| Tacheva, Jasmina | SAT 1600 |
| Takacs, Rich | FRI 0950, SAT 1640 |
| Tan, Bing Yang | THUR 0910 |
| Tan, Yu Xun | THUR 0910 |
| Thakur, Hena | THUR 1700*, FRI 1520 |
| The Positive Plus One Team | THUR 1140 |
| Thompson, Tamara | THUR 1140 |
| Tikhonov, Roman | FRI 1400 |
| Tinnemann, Peter | THUR 1420 |
| Tischer, Daniel | FRI 1500 |
| Toepfer, Tom | THUR 0850 |
| Trepka, Mary Jo | THUR 1700* |
| Tsolis, Kristen | FRI 1520 |
| Tsur, Oren | FRI 0910 |

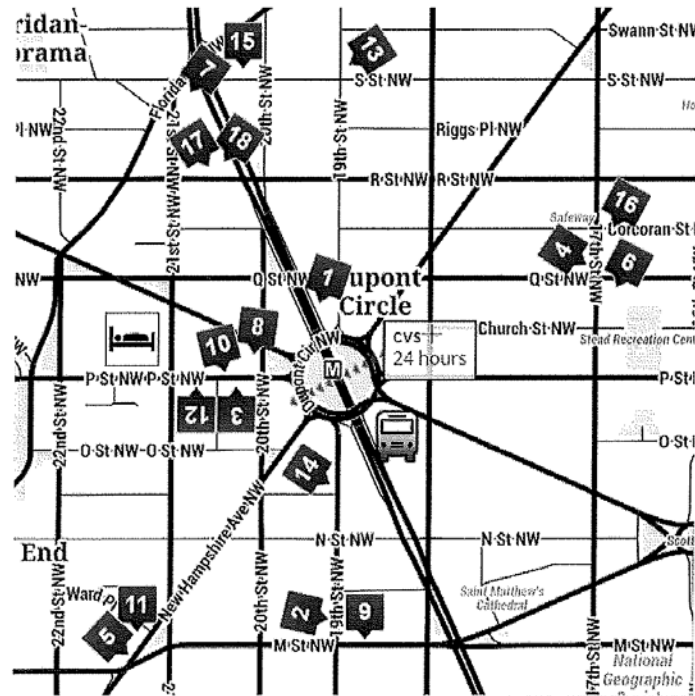
| | |
|----------------------------|----------------------------------|
| Tsvetovat, Maksim | FRI 1040 |
| Tucker, Joan | THUR 0830 |
| Valente, Thomas | THUR 1400, FRI 1400, SAT 1400 |
| Van Durme, Benjamin | SAT 1620 |
| Vargas, Edwin | FRI 1200 |
| Vega Yon, George G. | THUR 1400, FRI 1400 |
| Vermeer, Wouter | SAT 1100, SAT 1620 |
| Vinokhodova, Alla | SAT 0910 |
| Walkling, Ralph | THUR 1520 |
| Wang, Cheng | FRI 1140 |
| Wang, Lijing | FRI 1040, FRI 1640 |
| Wang, Peng | THUR 1700* |
| Watchorn, Jocelyn | THUR 1140 |
| Watts, Jameson | SAT 0930 |
| Weidemann, Felix | THUR 1420 |
| Wieczorek, Oliver | THUR 1520 |
| Wilensky, Uri | SAT 1100, SAT 1620 |

| | |
|-------------------------|----------------------|
| Wilkinson, Anna | THUR 1700* |
| Williams, Mark | THUR 1700* |
| Wilson, James D. | FRI 1120 |
| Wipfli, Heather | THUR 1400 |
| Wojcik, Stefan | FRI 0910 |
| Wood, George | THUR 0930 |
| Wozneak, Dawn | THUR 1040 |
| Xing, Yiqing | THUR 1440, THUR 1500 |
| Yap, Janice | THUR 0910 |
| Young, Lindsay | THUR 0950, THUR 1120 |
| Zakhlebin, Igor | SAT 0910 |
| Zhang, Liang | THUR 1440 |
| Zhang, Limin | FRI 1440 |
| Zheng, Qiwen | SAT 1120 |
| Zhu, Lingjiong | THUR 1500 |

*Poster session

Recommendations for Eating, Drinking, Entertainment

Our neighborhood favorites...



American:

1. Kramerbooks & Afterwords
café (\$\$) Open late
1517 Connecticut Ave NW
(202) 387 - 3825
2. Teddy and the Bully Bar (\$\$)
1200 19th St NW
(202) 872 - 8700

Italian:

3. Al Tiramisu (\$\$\$)
2014 P St NW
(202) 467 - 4466
4. Floriana (\$\$)
1602 17th St NW
(202) 667 - 5937

Seafood:

5. Grillfish (\$\$)
1200 New Hampshire Ave NW
(202) 331 - 7310
6. Hank's Oyster Bar (\$\$)
1624 Q St NW
(202) 462 - 4625

French:

7. Bistrot du Coin (\$\$)
1783 Connecticut Ave
(202) 234 - 6969

Mexican:

8. Mission Dupont (\$\$)
1606 20th St NW
(202) 525 - 2010

Spanish Tapas:

9. Bocqueria (\$\$)
1837 M St NW
(202) 558 - 9545

Pizza:

10. Pizzeria Paradiso (\$\$)
2003 P St NW
(202) 223 - 1245

Chinese:

11. Meiwah (\$\$)
1200 New Hampshire Ave NW
(202) 833 - 2888

Japanese:

12. Sakana (\$)
2026 P St NW
(202) 887 - 0900

Ethnic:

13. Mandu (\$\$)
1805 18th St NW
(202) 588 - 1540

Middle Eastern:

14. Ankara (\$\$)
1320 19th St NW
(202) 293 - 6301

Thai:

15. Thaiphon (\$\$)
2011 S St NW
(202) 667 - 3505

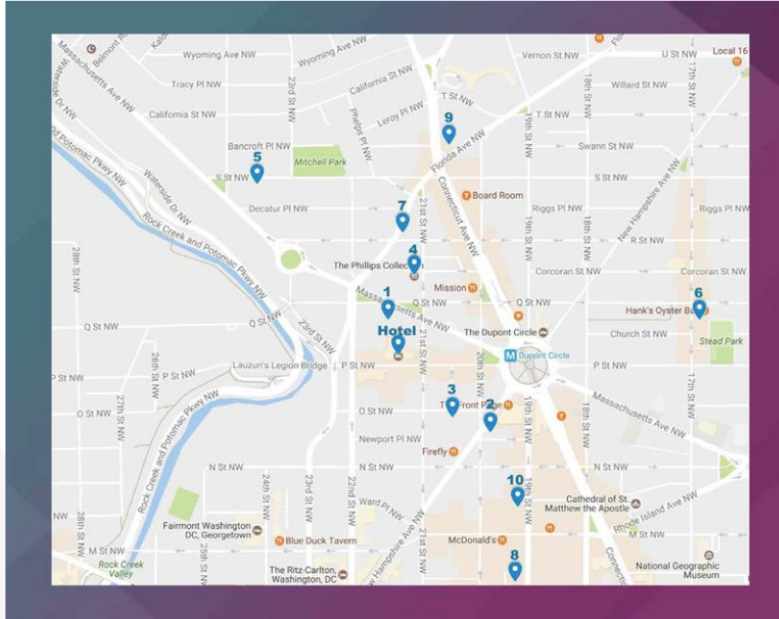
Steak:

16. Annie's Steak House (\$\$)
1609 17th St NW
(202) 232 - 0395

Coffee & Tea:

17. Teasm (\$)
2009 R St NW
(202) 667 - 3827
18. Dolcezza (\$)
1704 Connecticut Ave NW
(202) 299 - 9116

Kimpton Hotel Palomar Washington, DC



1. Anderson House—The American Revolution Institute of the Society of the Cincinnati <http://societyofthecincinnati.org>
2118 Massachusetts Ave. NW (202) 785-2040
The nation's oldest patriotic organization, founded in 1783 during the American Revolution.

2. Heurich House Museum <http://heurichhouse.org>
1307 New Hampshire Ave. NW (202) 429-1894
Built 1892-94, the museum is the historic home of German immigrant, local brewer, and philanthropist Christian Heurich.

3. The Mansion on O & O Street Museum
<http://omansion.com> 2020 O St. NW (202) 496-2000
This unique environment inspires guests to solve problems by thinking differently.

4. The Phillips Collection <http://phillipscollection.org>
1600 21st St. NW (202) 387-2151
Works by renowned European and American Impressionists and modern artists—Degas, Matisse, O'Keeffe, Picasso, Renoir and Rothko among them.

5. Woodrow Wilson House <http://woodrowwilsonhouse.org>
2340 S St. NW (202) 387-4062
Dine intimately in the Presidential dining room, enjoy cocktails throughout the main museum rooms or relax and unwind in the tranquil period garden.

6. Agora <http://agoradc.net>
1527 17th St. NW (202) 332-6767
Washington, DC 20036
The go to Mediterranean restaurant in historic DuPont Circle.

7. Buca di Beppo <http://bucadibeppe.com/restaurants/dc/washington-d-c>
1825 Connecticut Ave. NW (202) 518-4048
Celebrating recipes handed down from generation to generation by Italian immigrants.

8. Nooshi Restaurant <http://nooshidc.com>
1120 19th St. NW (202) 293-3138
Critically acclaimed traditional and contemporary Asian dishes, including Japanese sushi bar and an extensive wine, sake and specialty cocktails list.

9. Restaurant Nora <http://noras.com>
2132 Florida Ave. NW (202) 462-5143
Celebrating 36 years, the country's first certified organic restaurant presenting seasonal, sustainable organic cuisine.

10. Teddy & The Bully Bar <http://teddyandthebullybar.com>
1200 19th St. NW (202) 872-8700
Paying tribute to our 26th President, this restaurant insures that their customers are provided the robust and refined dining experience they are looking for.

