

State of the Waterway 2024

February 2025



Vessel Traffic Service

U.S. Department of
Homeland Security

**United States
Coast Guard**



VTS Transits - 2024

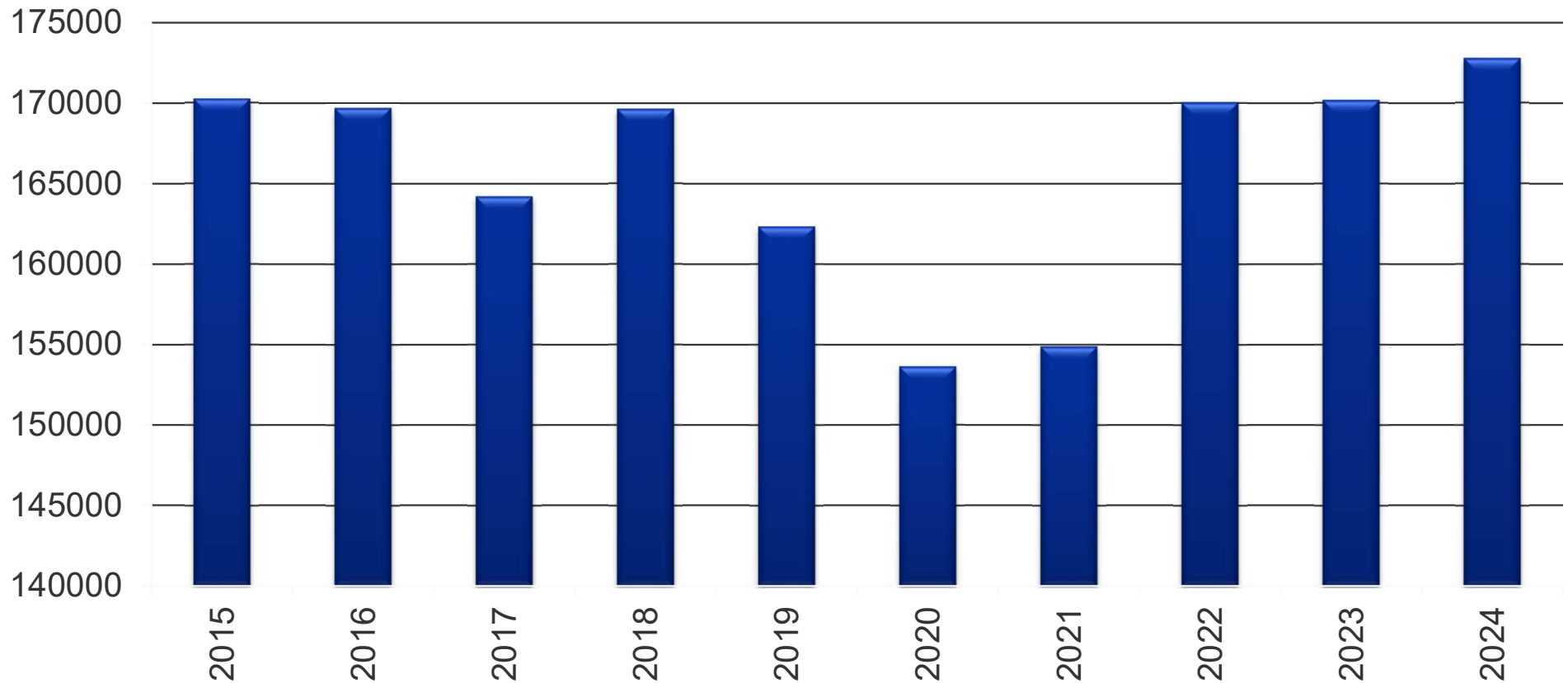
Tug/Tow	139,005	+0.5%
Ships	23,567	+2.9%
Miscellaneous	10,199	+13%
<hr/>		
SubTotal	172,771	+1.5%
Ferries	62,554	+6.3%
Total	235,325	+2.8%



2015 – 2024 Commercial Transits

w/o ferries

Commercial Transits

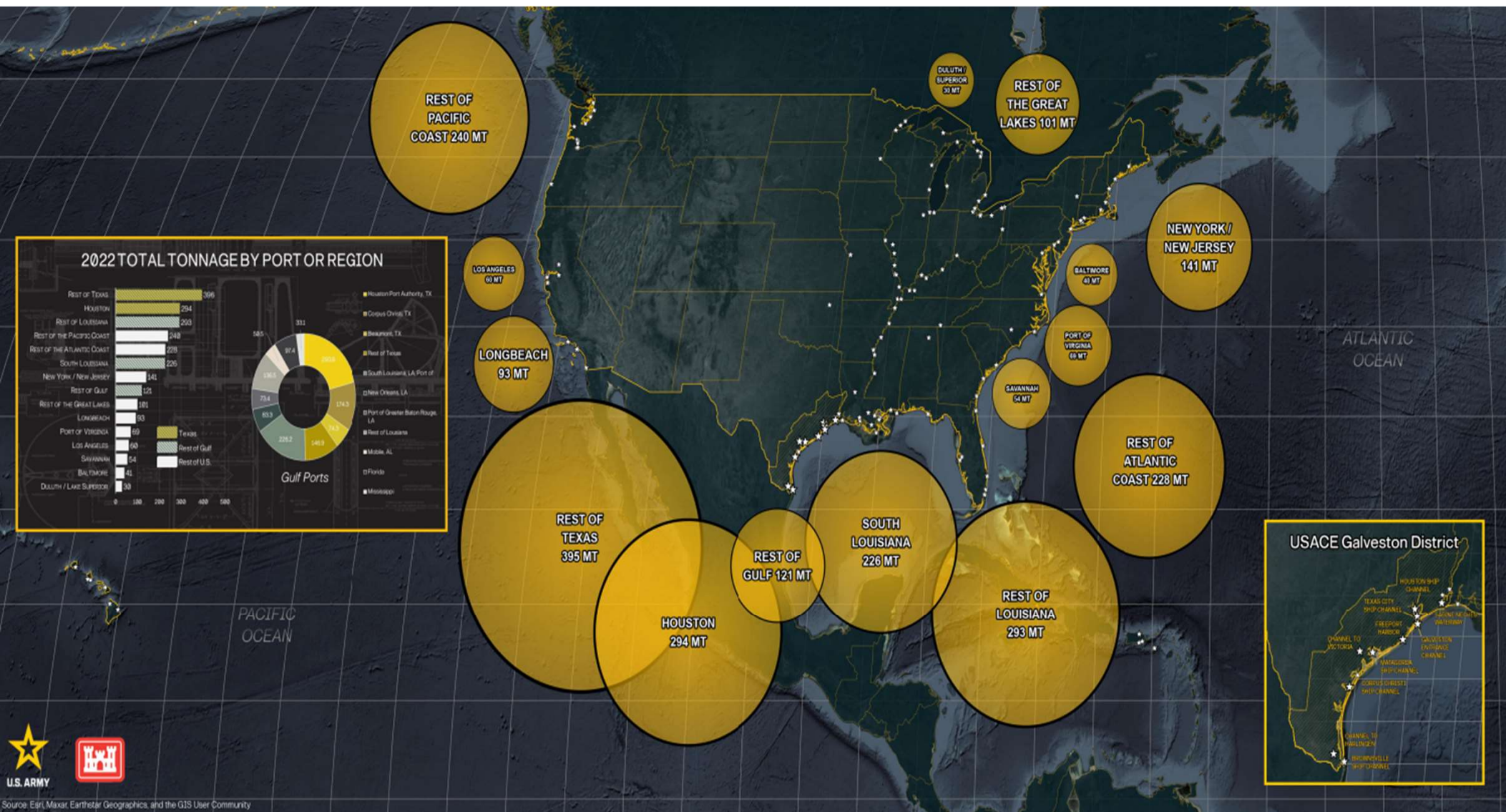


U.S. Department of
Homeland Security

United States
Coast Guard



USACE



U.S. Department of
Homeland Security

United States
Coast Guard



Houston Vessel Traffic Service Area Hou, Gal, TC, GICW

\$1 Trillion Economic Impact

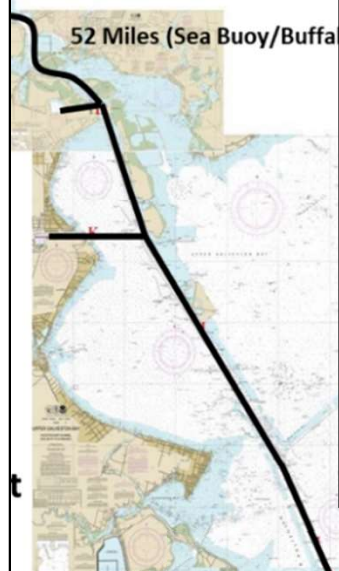
\$2.7 Billion/Day
3.37 Million Jobs

12.3% of U.S. Tonnage

150+ Port Facilities

Houston-Galvesto

52 Miles (Sea Buoy/Buffer)



N.A. Largest Petrochem Cluster

1st in Overall Tonnage

1st in Foreign tonnage

1st in Plastic Export

3 of 10 U.S. Largest Refineries

4th U.S. Cruise Ship Port

5th U.S. Container Port

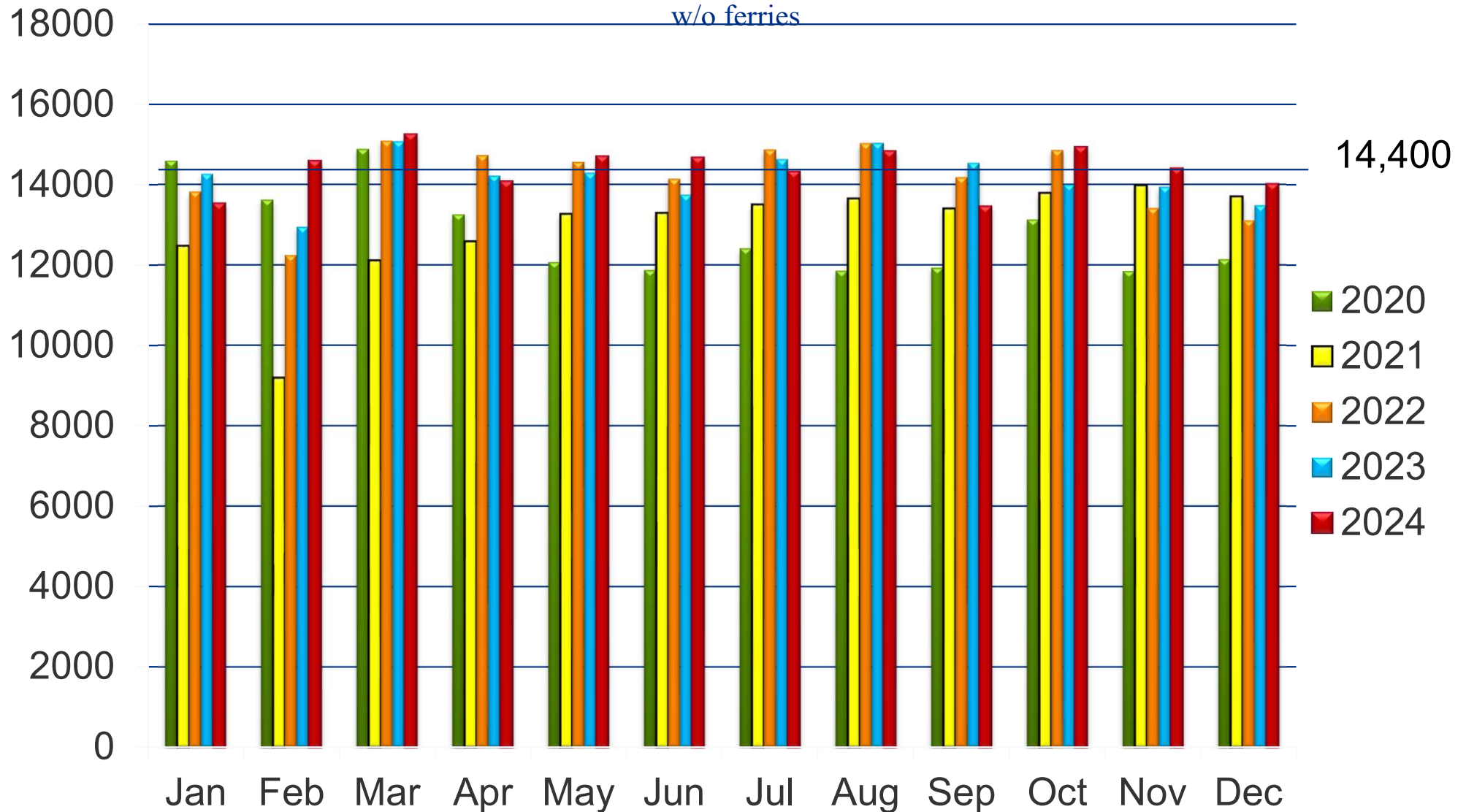


Typical Day in the VTSA - 2024

46	Tanker Transits
17	Freighter Transits
2	Cruise Ship Transits
381	Tow Transits
171	Ferry Transits
28	Aux/ OSV/ Miscellaneous
70	Ships in Port



Monthly Comparison: 2020 – 2024

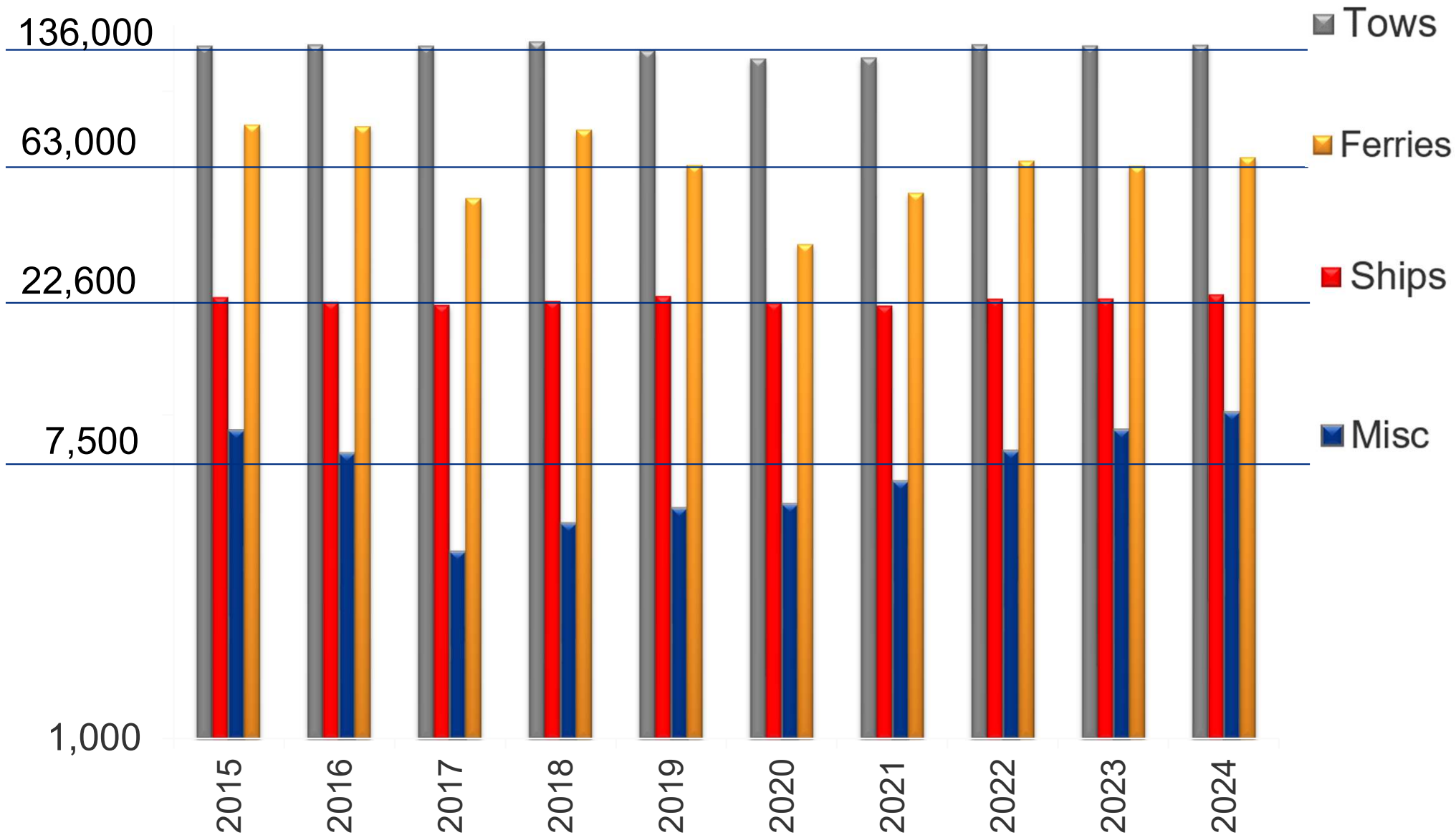


U.S. Department of
Homeland Security

United States
Coast Guard



Annual Comparison: 2015 – 2024

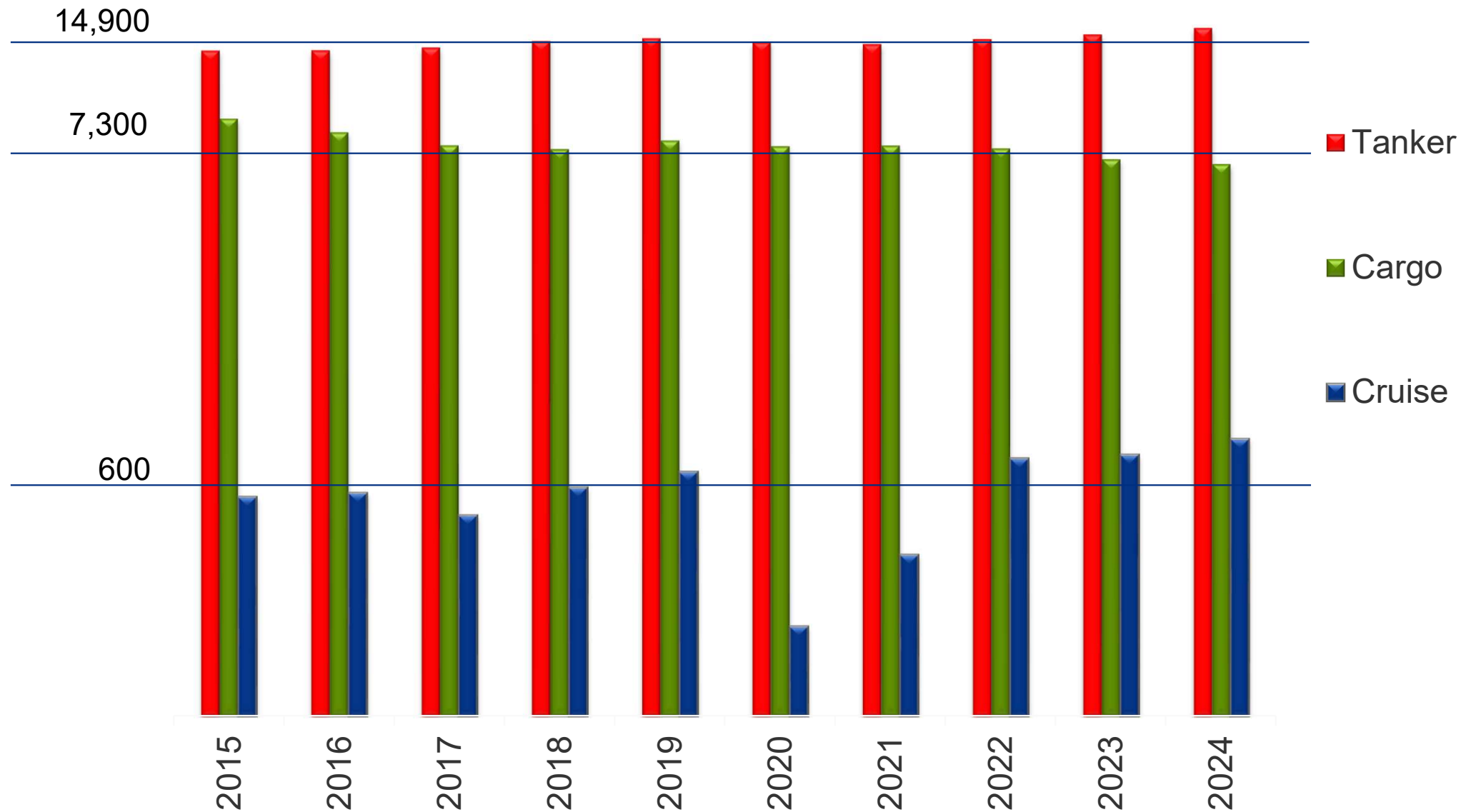


U.S. Department of
Homeland Security

United States
Coast Guard



Annual Comparison: 2015 – 2024

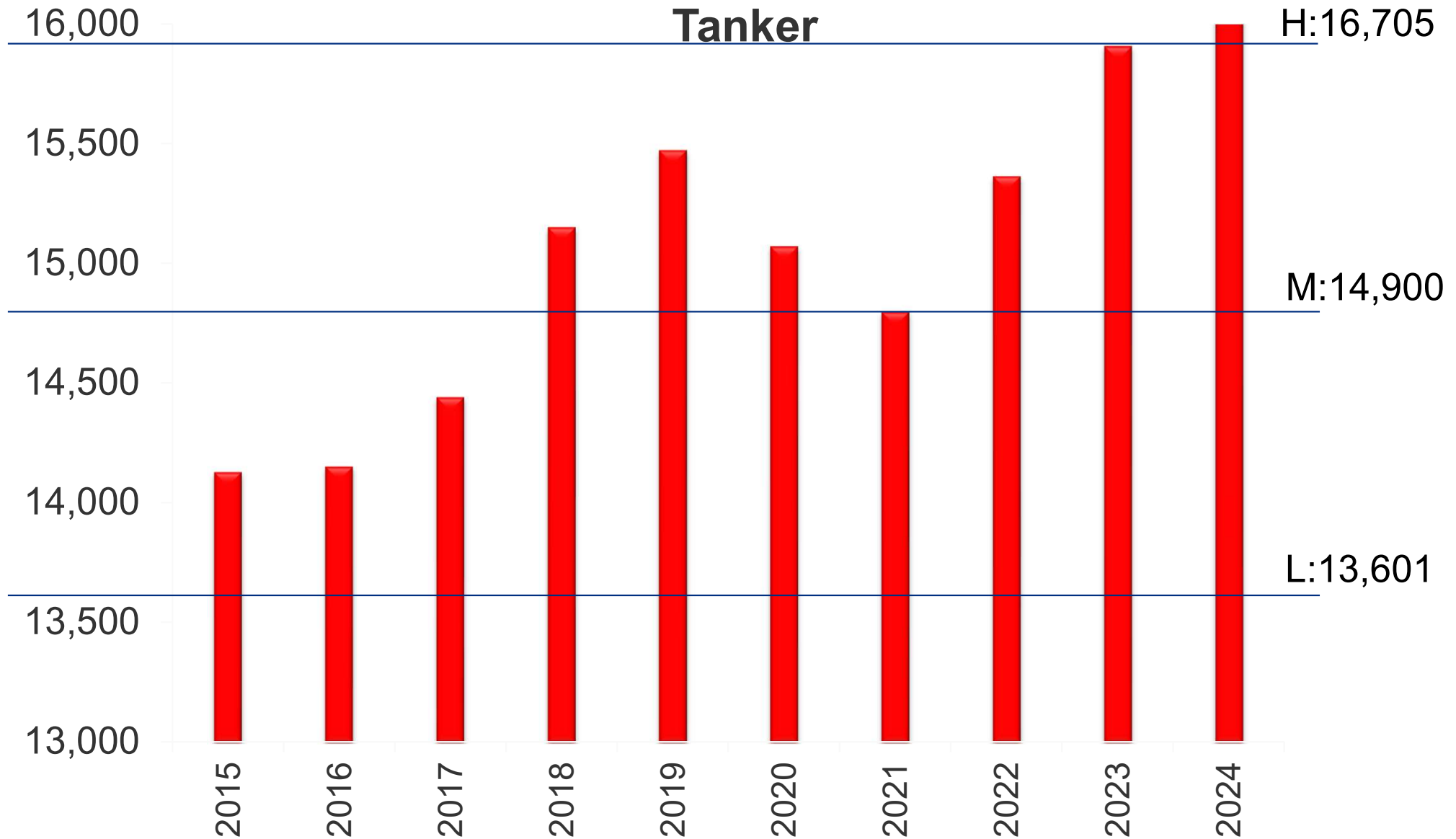


U.S. Department of
Homeland Security

United States
Coast Guard



Annual Comparison: 2015 – 2024



U.S. Department of
Homeland Security

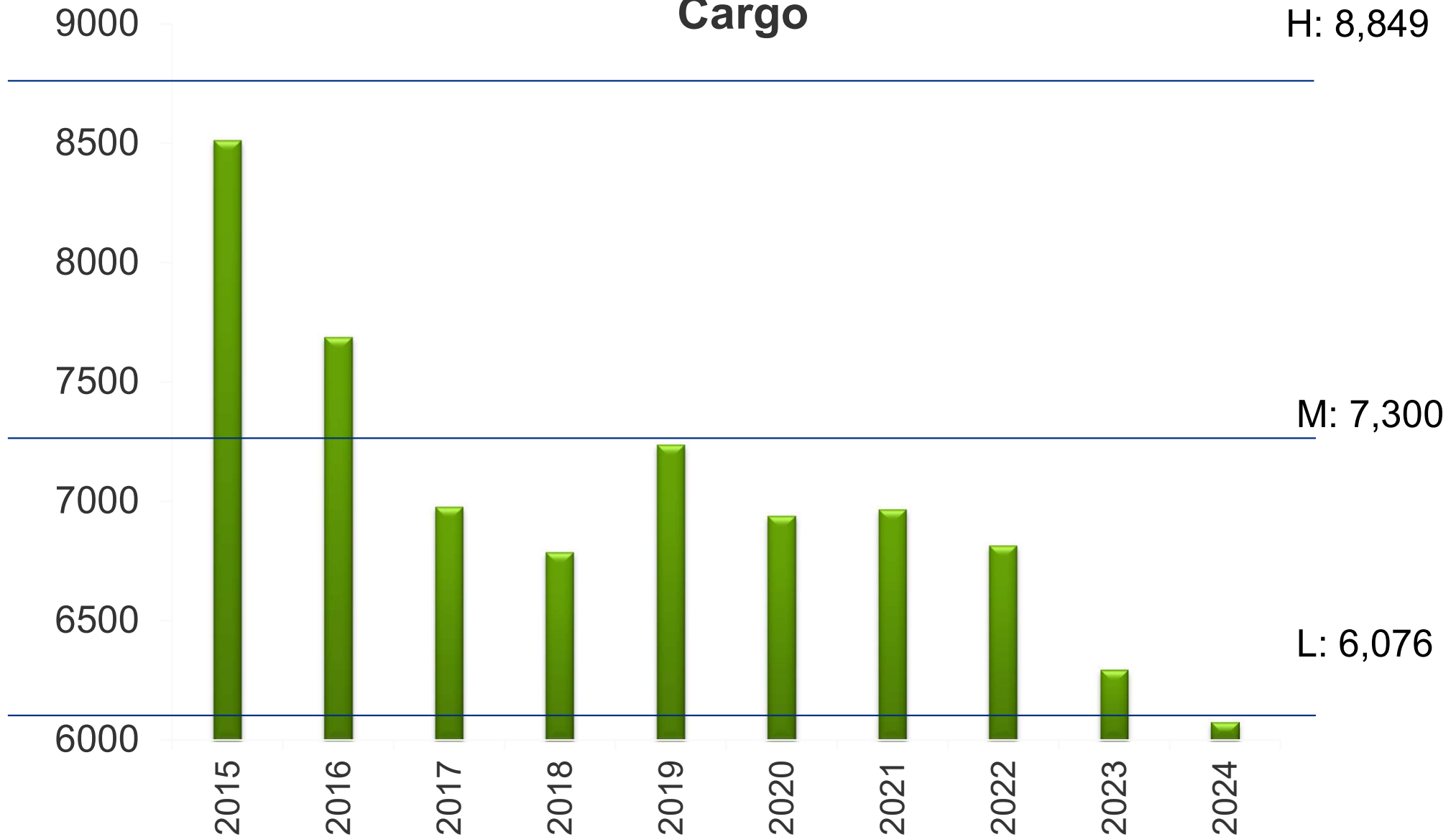
United States
Coast Guard



Annual Comparison: 2015 – 2024

Cargo

H: 8,849

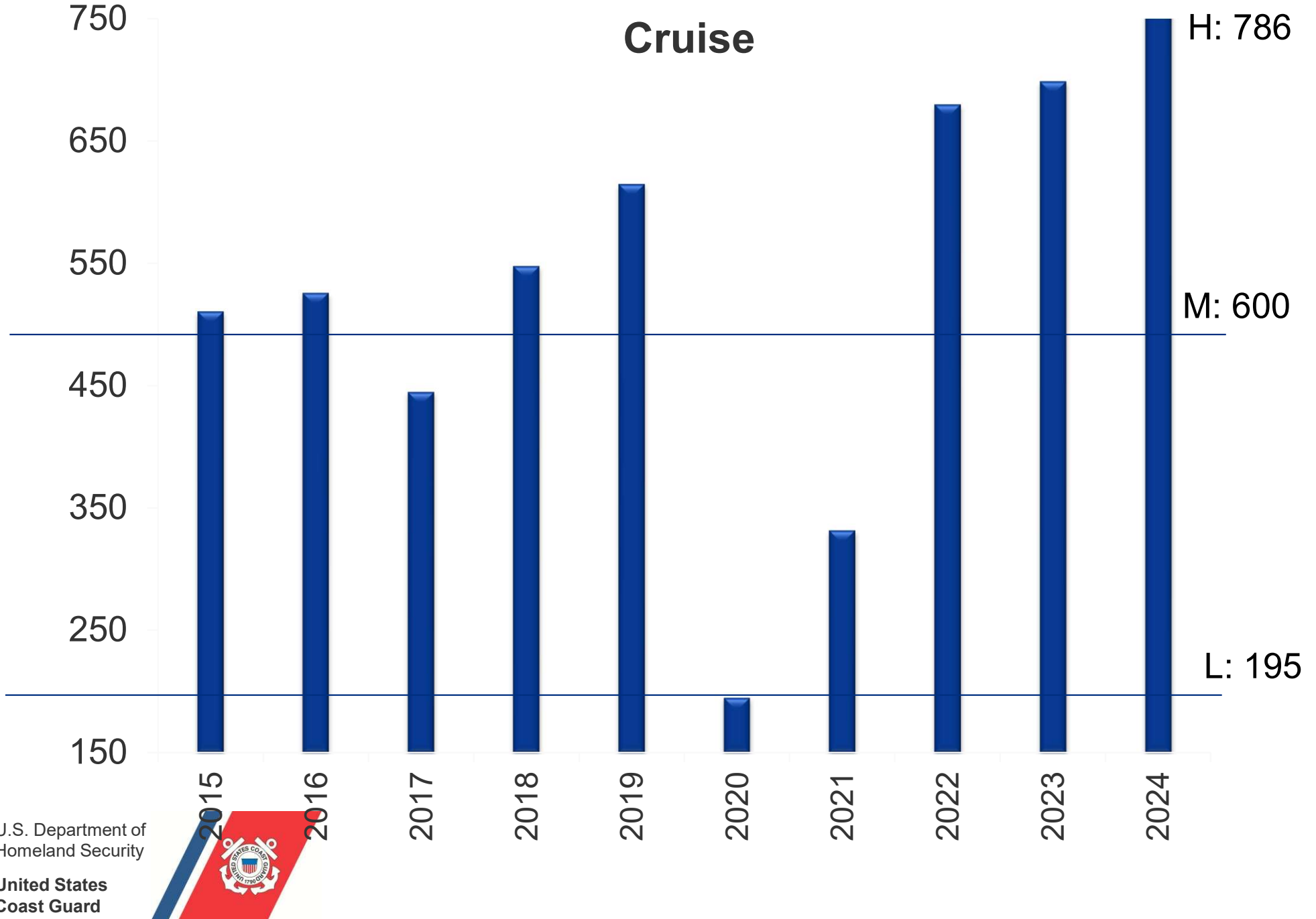


U.S. Department of
Homeland Security

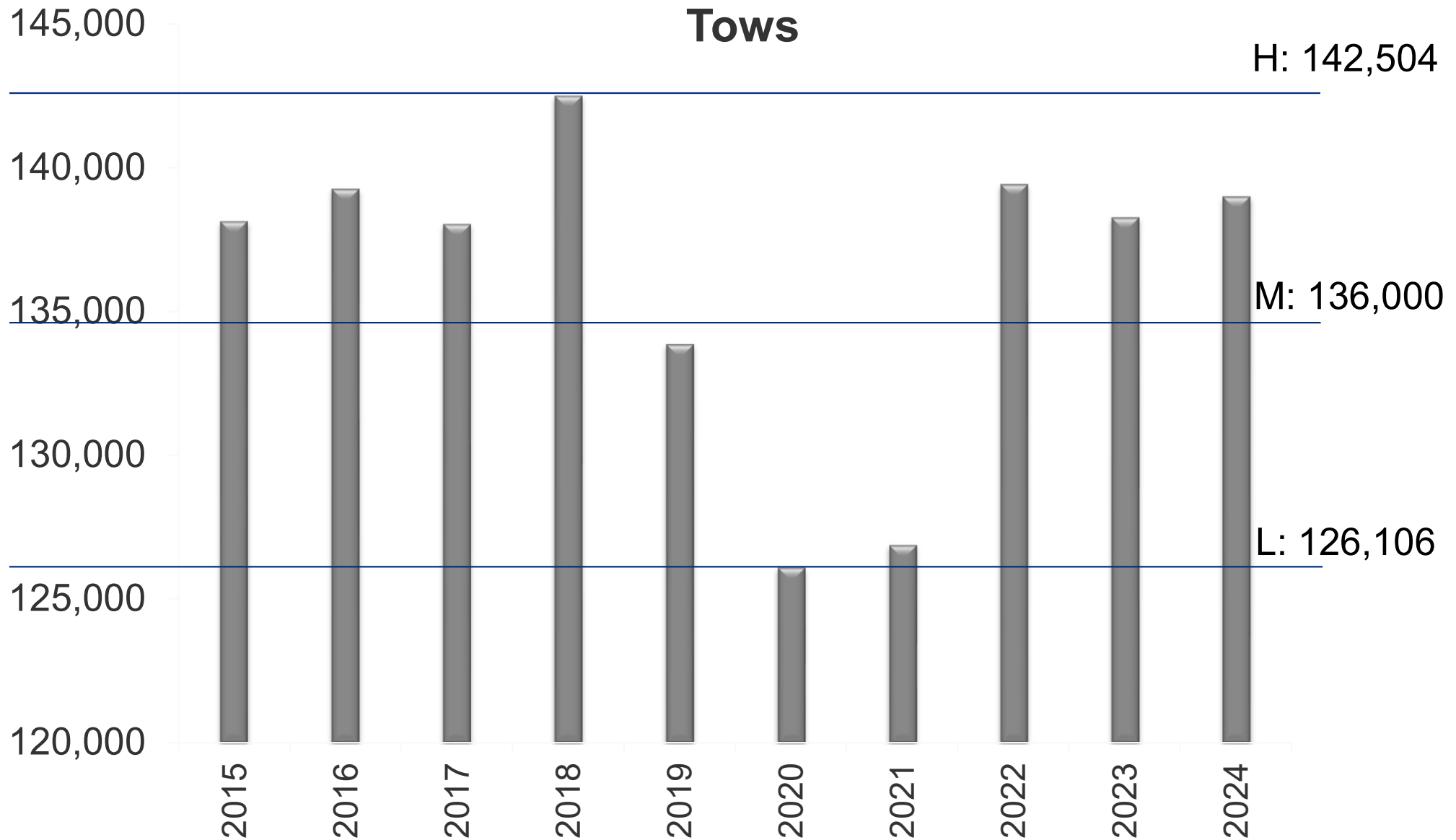
United States
Coast Guard



Annual Comparison: 2015 – 2024



Annual Comparison: 2015 – 2024

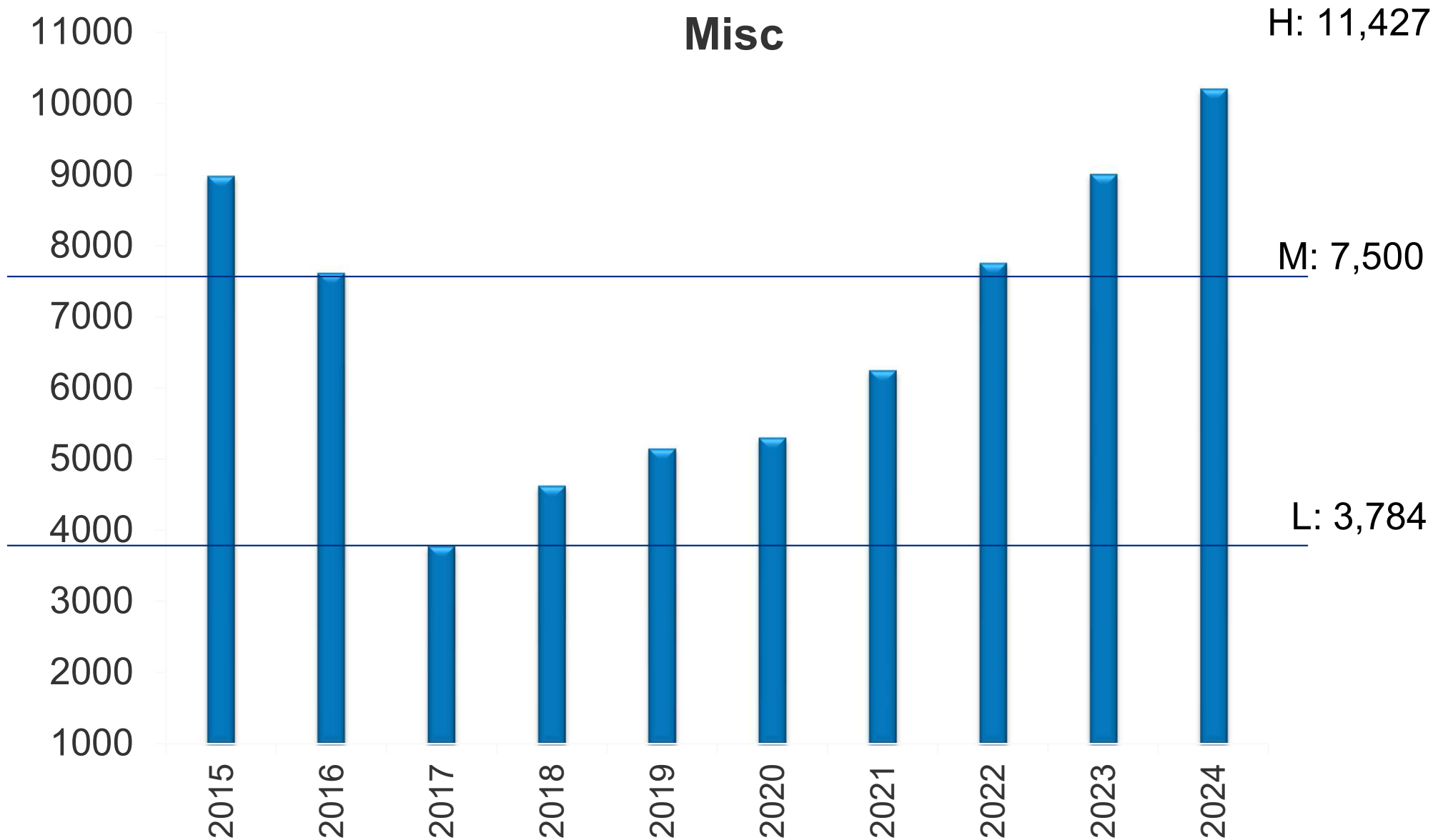


U.S. Department of
Homeland Security

United States
Coast Guard



Annual Comparison: 2015 – 2024

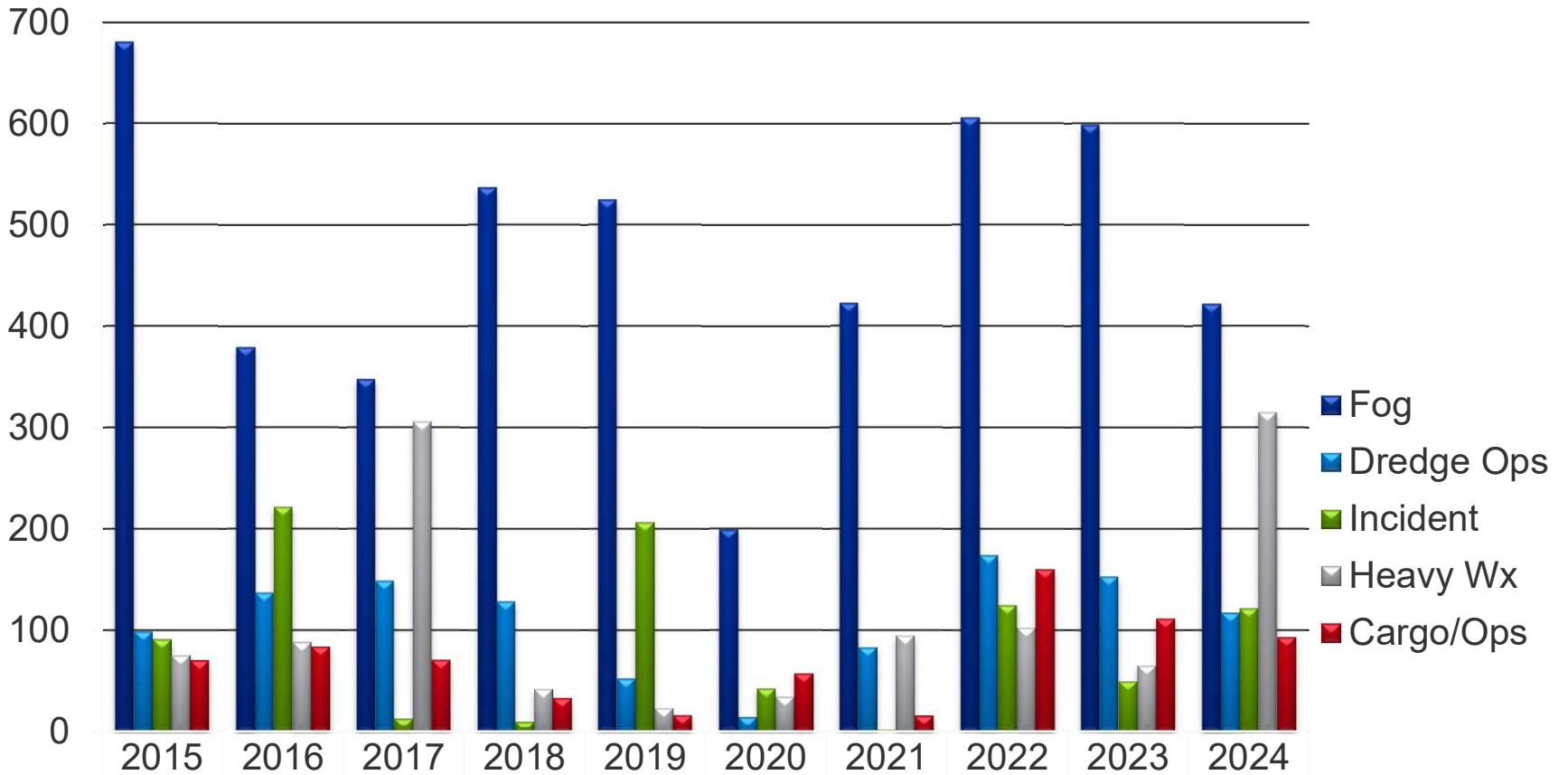


U.S. Department of
Homeland Security

United States
Coast Guard



Channel Closure/Lost Hours



	2015	2016	2017	2018	2019	2020	2021	2022	2023	2024
Fog	680.2	379	347.38	537	525	199.25	422.5	605.7	598.7	421.8
Dredge Ops	99.2	137.26	148.75	128.6	52.5	14.5	83.5	174.2	153.2	117.3
Incident	91.5	221.75	13	10	206.5	42.75	2	124.7	50	121.6
Heavy Wx	75.5	88.6	305.75	42.2	23.5	34.5	95	102.8	65.3	315
Cargo/Ops	70.5	84.25	71	33.4	16.5	57.7	16	160.2	111.8	93.4

U.S. Department of
Homeland Security

United States
Coast Guard



Challenges

- Jan-Mar: Fog Season
- Jan: Hi-Wtr, 3dy
 - Winter Storm, 2dy
 - MV STRIDE – fire
- Mar: Hvy WX – 2dy
- May: Hi Water, 7dy
 - SYDNI C
 - Derecho, sig damage, 25hrs
- Jun: Hvy WX – 2.5dy
- Jul: BERYL – Hi-Wtr,
 - VTS 2wks
 - MISS PEGGY
- Sep: FRANCINE, 2dy
- Nov: KATHY PAWG
- Dec: Fog Season

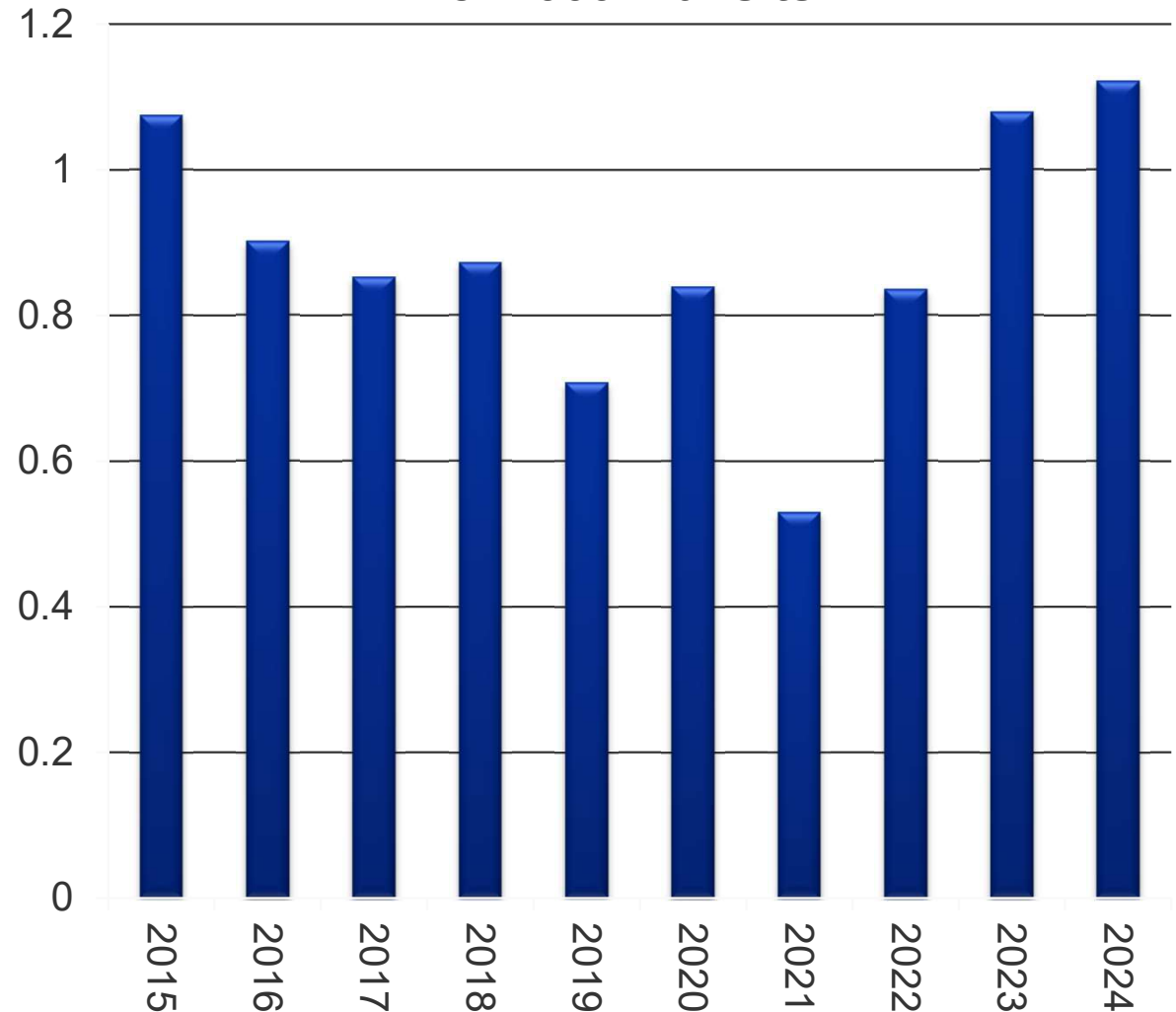


Notifications 2015-2024

264 Total Vessel Notifications

- 154 Tow
- 107 Ships
- 3 Miscellaneous- (OSV, industrial)
 - Propulsion, steering, radar/AIS, collision, allision, broken tow, pollution
- Increased awareness and programs
 - SIRE 2.0
 - SubCh M
- Propulsion Limiter
- Ship fire, 2 tow fires, 3 tow sinkings, 8 collisions
- VTS awareness

Per 1000 Transits

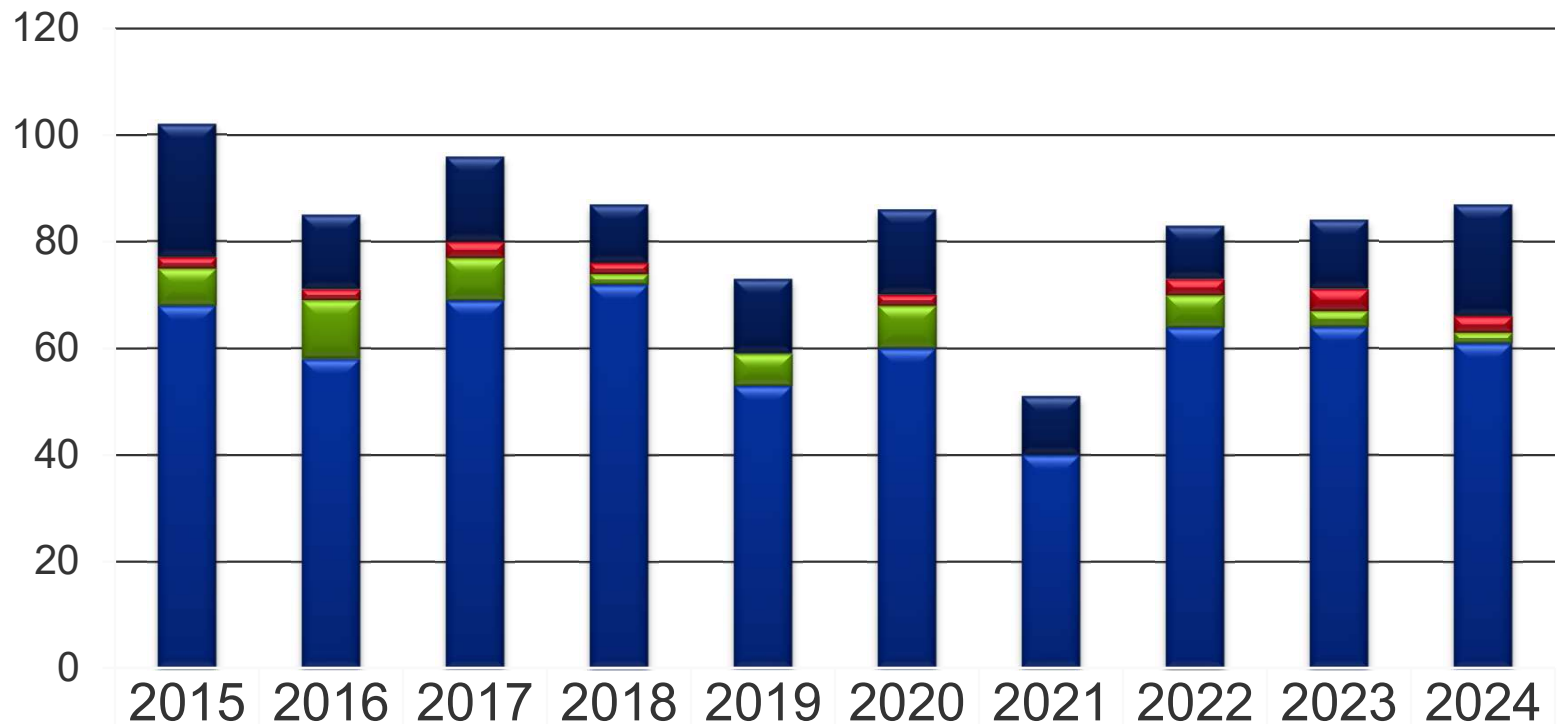


U.S. Department of
Homeland Security

United States
Coast Guard



Ship Casualties



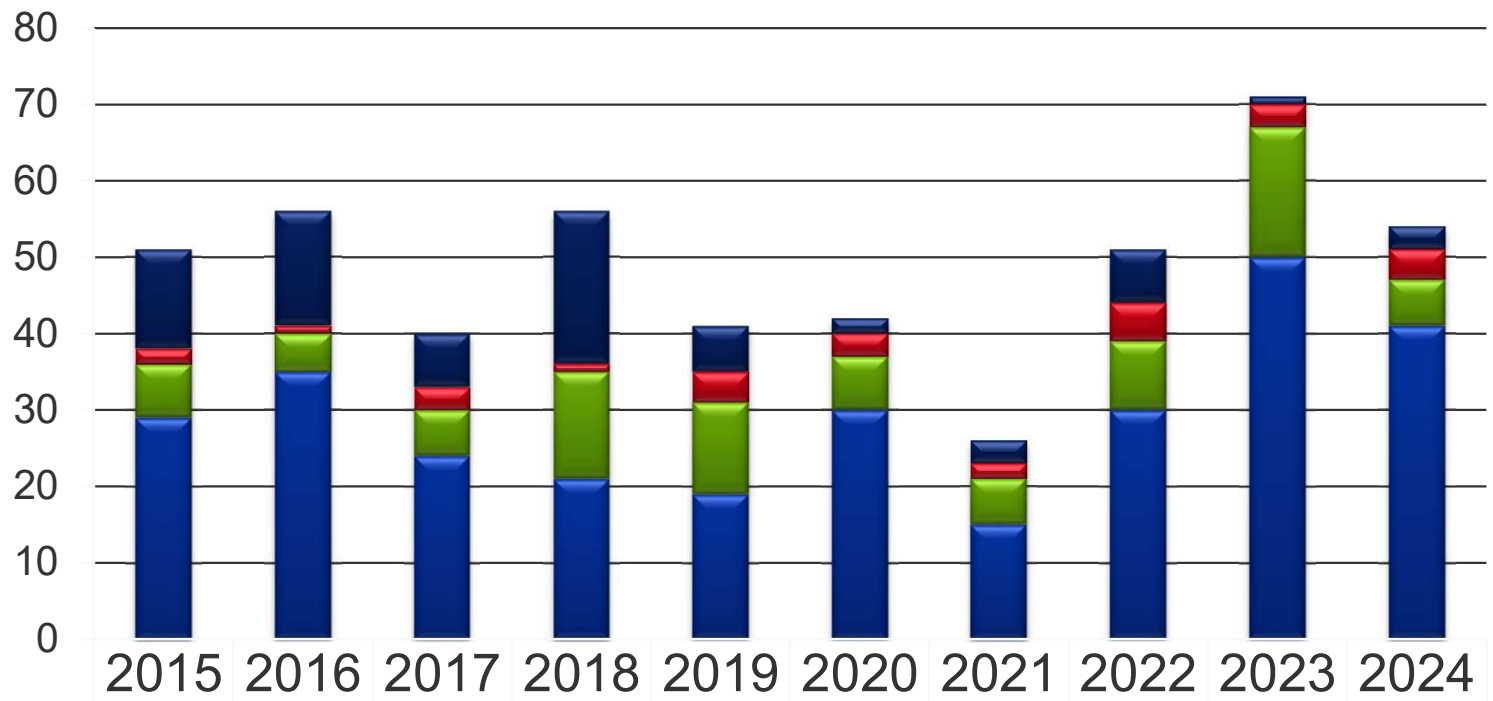
	2015	2016	2017	2018	2019	2020	2021	2022	2023	2024
Nav/AIS/Electric	25	14	16	11	14	16	11	10	13	21
Generator	2	2	3	2	0	2	0	3	4	3
Steer	7	11	8	2	6	8	0	6	3	2
Propulsion	68	58	69	72	53	60	40	64	64	61

U.S. Department of
Homeland Security

United States
Coast Guard



Tow Casualties



■ Nav/AIS/Electronics	13	15	7	20	6	2	3	7	1	3
■ Generator	2	1	3	1	4	3	2	5	3	4
■ Steer	7	5	6	14	12	7	6	9	17	6
■ Propulsion	29	35	24	21	19	30	15	30	50	41

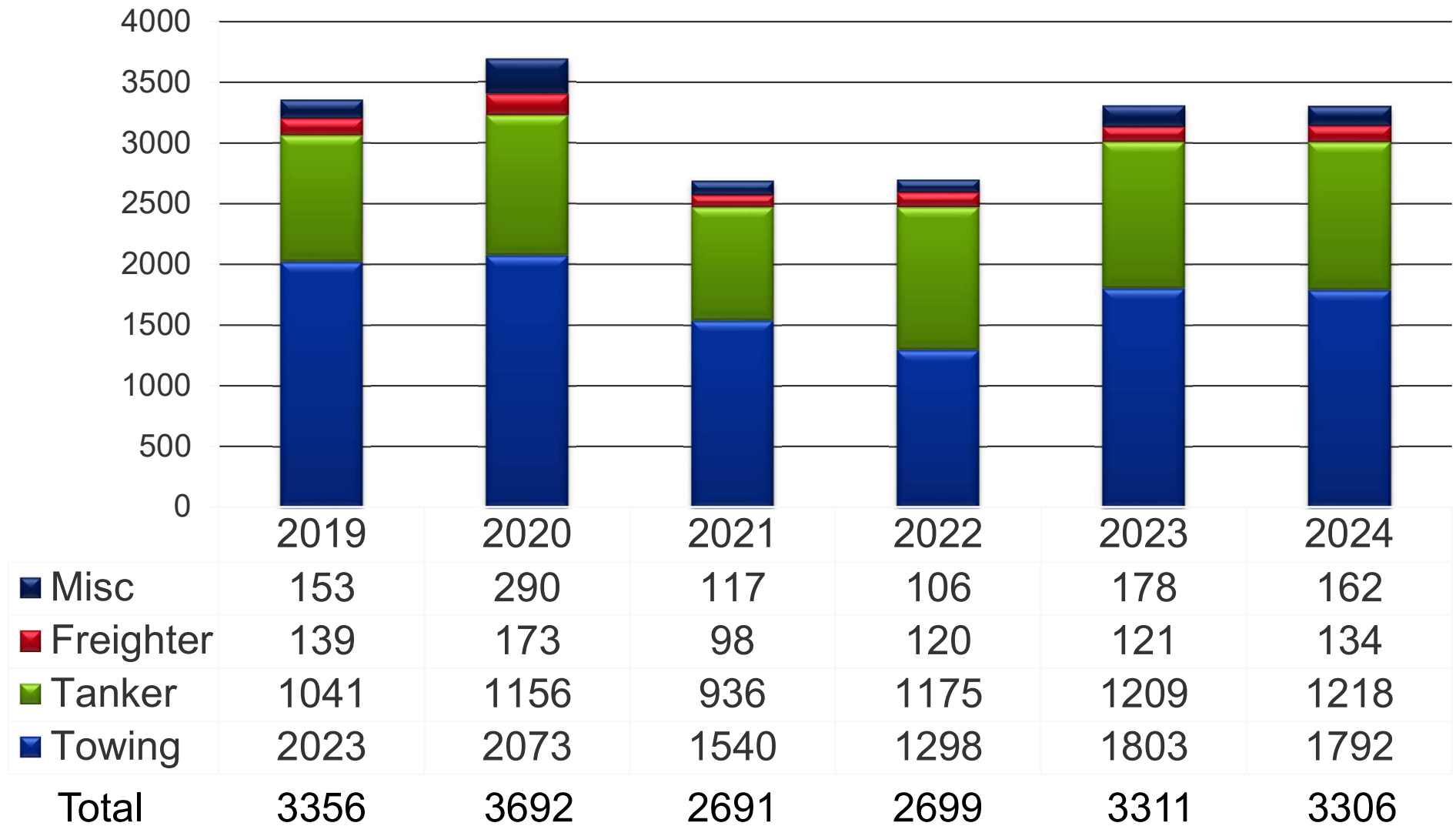
U.S. Department of
Homeland Security

United States
Coast Guard



Bolivar Roads

Anchorage Transits



U.S. Department of
Homeland Security

United States
Coast Guard

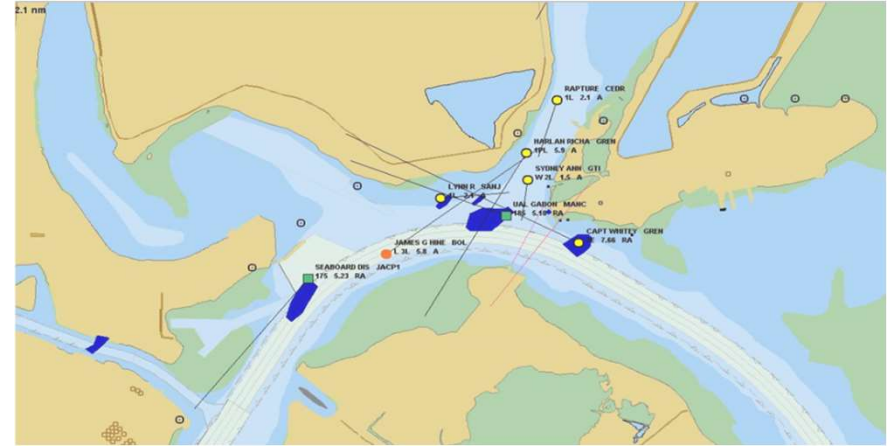


*Misc = Tug, OSV, Pax, Military, Dredge, Cruise



USCG Vessel Traffic Service

Safe, Efficient, Waterborne Commerce



- 50/50 active duty/civilian personnel
- 2M+ voice communications
- 225K+ vessel transits
- 1 tow with barges every 4 minutes
- 1 aux/pax vessel every 10 minutes
- 1 ship every 20 minutes

- Hou, Gal, Tex City, GIWW – 85miles
- Support mariner decision making
- Prioritize/Deconflict waterway ops
- Channel closures - dredging, construction, incident management
- Captain of the Port representative - Port Coordination Team (PCT).

COLLABORATIVE OUTCOMES

Anchorage Working Group	Gantry Crane Awareness
AToN redesign/location	Harbor of Safe Refuge Handbook
Barge Lanes	Heavy Lifts
Barge Fleeting, Mooring, Push-In Discussions	LSHSC – All Committees
Bayport Turning Basin (Tow – Container Ship) Coordination	Pelican Island Bridge framework
Bluewater - Brownwater Interaction Engagements	Oversize tow permits
Bolivar Roads Inbound Alternate Route	Port Coordination Team
Bolivar Buoy Line No Meeting/Overtaking	San Jacinto Mud Banks Push-in Enforcement
Brownwater University	Slack Line Reporting
Cat I / Cat II Channel Obstruction Requests & Non-VTSA Obstruction Requests	LT 54 ship/tow collisions
COTP Roundtables – towing, chem, crude, pilots...	Carpenters Bayou RORO closures
Current meters	Special Traffic Management – bridge VIS
Dredge and Marine Construction Coordination	VTSA Advisory Working Group - summaries
GHPB Traffic Efficiency Working Group	VTSA Restricted Moorings Policy
	VTSA vessel rides, outreach

Contacts

VTS Houston/Galveston

Director:

Alberto Hernandez

713.818.4405

Alberto.Hernandez@uscg.mil

OPS Manager:

Randy Scott

281.464.4827

Michael.R.Scott@uscg.mil

Vessel Traffic Center

Watch Supervisor (24 hrs)

281.464.4836/37

houstontraffic@uscg.mil

U.S. Department of
Homeland Security

**United States
Coast Guard**

