



Houston Ship Channel Expansion – Project 11: Expediting the expansion of one of the world’s most strategic waterways economic powerhouses

With the 52-mile Houston Ship Channel (HSC) serving as a foundation, the greater port of Houston region handles more cargo and exports than any other port in the nation. As the number of vessels calling on the port of Houston continues to grow, expansion of this critical transportation artery is imperative.

In support of that mission, a unique partnership involving the Port of Houston Authority (PHA) seeks to expedite the expansion. A competitive waterway is essential not only to maintaining current employment levels but creating the new jobs necessary for economic growth to continue in the wake of the global pandemic. The expansion would also generate additional tax revenue to support schools, as well as other public entities and infrastructure.

PROJECT 11 WILL WIDEN THE HOUSTON SHIP CHANNEL FROM
530 FEET ← to → **700 FEET**

HOUSTON SHIP CHANNEL PROPOSED IMPROVEMENTS

STEP-BY-STEP APPROACH: Widening & Deepening Houston Ship Channel

- 1A Bolivar Roads to Redfish
- 1B Redfish to Bayport Ship Channel
- 1C Bayport Ship Channel to Barbours Cut
- 2 Bayport Ship Channel
- 3 Barbours Cut Ship Channel
- 4 Boggy Bayou (BW 8) to Sims Bayou
- 5 Sims Bayou to IH 610
- 6 IH 610 to Turning Basin
- No work planned in this segment



OVERVIEW

Expediting Project 11 will ensure timely completion of ship channel expansion.

Project 11 (the 11th major expansion of the HSC), includes widening a critical segment of the channel from 530 feet to 700 feet, using a local funding plan that is the first of its kind. Congress approved the widening and deepening of the channel last December as part of the Water Resources Development Act of 2020. However, relying on traditional federal funding mechanisms

would require decades to complete the expansion. The collaboration of public and private entities is seeking to expedite the process and complete the expansion within five years, allowing the port of Houston to preserve, and even grow, its market share.

Expediting the expansion is imperative to ensuring that safe and efficient traffic continues. Project 11



**USING SHIP, TRUCK, AND
RAIL TRANSPORTATION,
THE PORT OF HOUSTON
HANDLES MORE THAN
3 MILLION TEUs PER YEAR.**

OPPORTUNITIES

Driving Security and Economic Activity

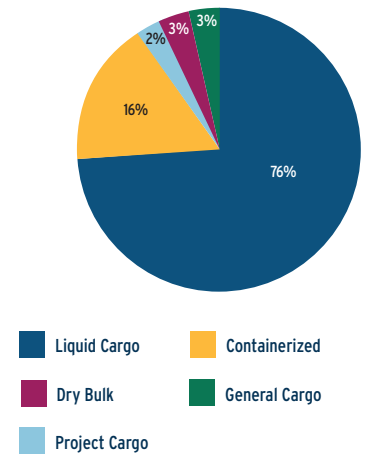
The greater port of Houston region is busier than the ports of Los Angeles, Long Beach, and New York/New Jersey, combined. In addition to its strategic importance for the U.S., the port of Houston is also a vital economic driver for the region, the state and the nation. As a major energy hub, the port of Houston is essential to our national security and provides global access to the largest petrochemical manufacturing cluster in the western hemisphere, as well as low-cost, high-quality energy products from the world's most prolific producing areas in the Permian Basin, and the fourth-largest metropolitan area in the U.S.

would allow movements of ships greater than 1,100 feet, which are currently banned under state law, and increase the number of nighttime transits. As a result, the HSC could safely accommodate an additional 1,400 vessels per year, representing an incremental 91 million tons of cargo and approximately \$200 billion in economic impact, making Project 11 the largest non-federally funded

project in U.S. history.

The expansion would make it easier for larger ships to arrive and depart, thereby facilitating two-way traffic and reducing delays for all vessels. In addition to ensuring safe and efficient traffic, Project 11 would help reduce delays and demurrage charges, which can run \$25,000 - \$50,000 per day, and control operating costs for things such as fuel, equipment, and supplies.

GREATER HOUSTON PORT COMPLEX CARGO SECTORS-2020



ECONOMIC IMPACT



**HOUSTON IS
THE NATION'S
#1 PORT.**

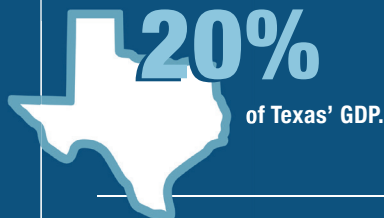
Leader in Foreign
Waterborne
Tonnage, U.S.
Exports, and
Steel Imports

200+

private and public companies
have operations on the channel,
which supports more than

3 MILLION

jobs nationwide and represents



Private and public terminals at the
Houston port drive more than

\$800 BILLION

in U.S. economic value.



A MODEL FOR SUCCESS

Public-Private Initiative
Making Progress

Since mid-2019, representatives from the PHA and companies that rely on the HSC have dedicated themselves to developing a financing arrangement that is legal, fair, and straight-forward to implement. The PHA and industry will share the cost of the non-federal portion of the expansion, which is estimated to be about \$1 billion.

HOW TO HELP

If you would like to have a voice in how the expansion of the Houston Ship Channel moves forward, we encourage you to submit your comments and questions to info@txgulf.org or call 713-678-4300.

Also, please consider becoming a member of the Greater Houston Port Bureau.



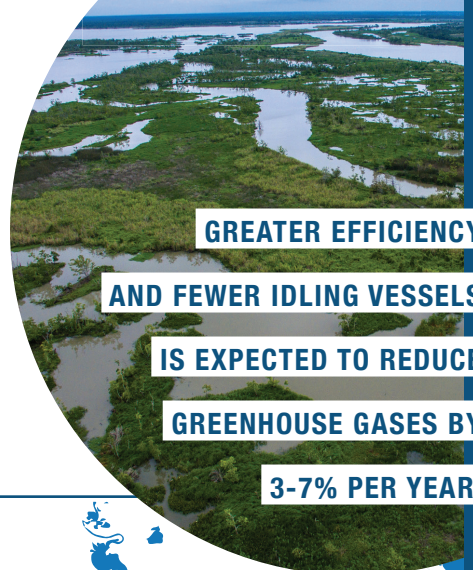
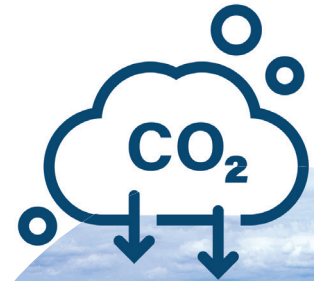
BENEFITS

Environment and Improved Quality of Life

Greater efficiency and less waiting time for idling vessels anchored offshore is expected to reduce emissions.

In addition to reduced emissions, dredge material would be used to expand marsh and wildlife habitat, including hundreds of acres of replacement oyster reef pads. Project 11 would not only provide environmental benefits locally, but for the rest of the world too. For instance, the expansion could accommodate more vessels that export cleaner burning fuels, including propane, which is already being used abroad to replace materials like coal, wood and animal waste that have traditionally

been used by billions around the world for heating and cooking. In doing so, an increasing number of global citizens, especially those in developing nations, are enjoying longer life expectancy and a better quality of life, while deforestation is reduced in the process.



GREATER EFFICIENCY

AND FEWER IDLING VESSELS

IS EXPECTED TO REDUCE

GREENHOUSE GASES BY

3-7% PER YEAR.

ENVIRONMENTAL IMPACT

ENVIRONMENTAL CONSIDERATIONS:

Project 11 has several environmental components. Initiatives include building new bird islands, marshes, oyster reefs, and providing air quality benefits.

-  Marsh Creation
-  Bird Island Construction
-  Marsh/Bird Island Construction
-  Air Quality Improvement
-  New Oyster Reef

