



Tropical Update



11:30 AM EDT

Wednesday, October 16, 2024

Milton Recovery Weather & Riverine Flooding

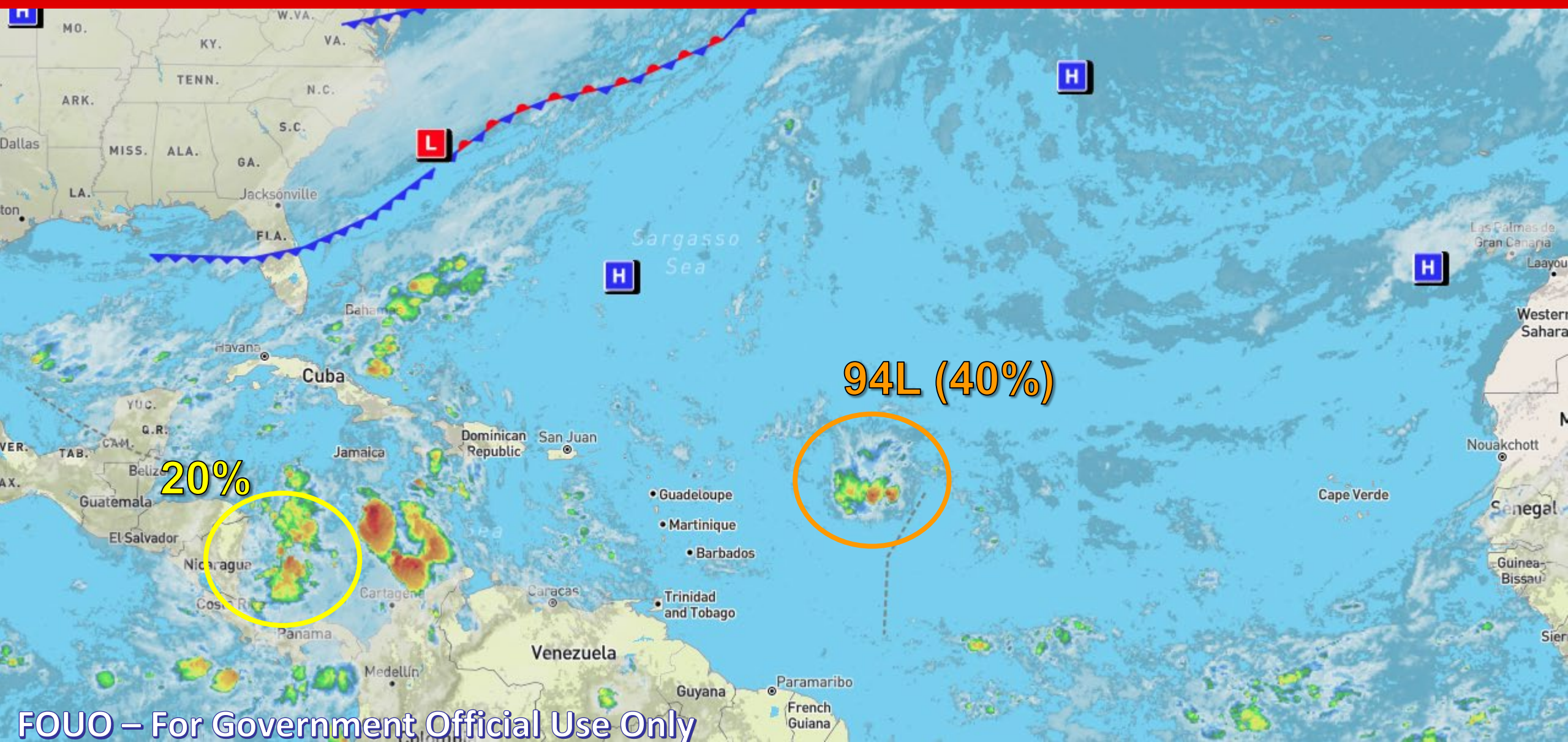
Central Tropical Atlantic Disturbance - Invest 94L (40%)

This update is intended for government and emergency response officials, and is provided for informational and situational awareness purposes only. Forecast conditions are subject to change based on a variety of environmental factors. For additional information, or for any life safety concerns with an active weather event please contact your County Emergency Management or Public Safety Office, local National Weather Service forecast office, or visit the National Hurricane Center website at www.hurricanes.gov.



Atlantic Basin Satellite Image

Chance of development: None Low Medium High





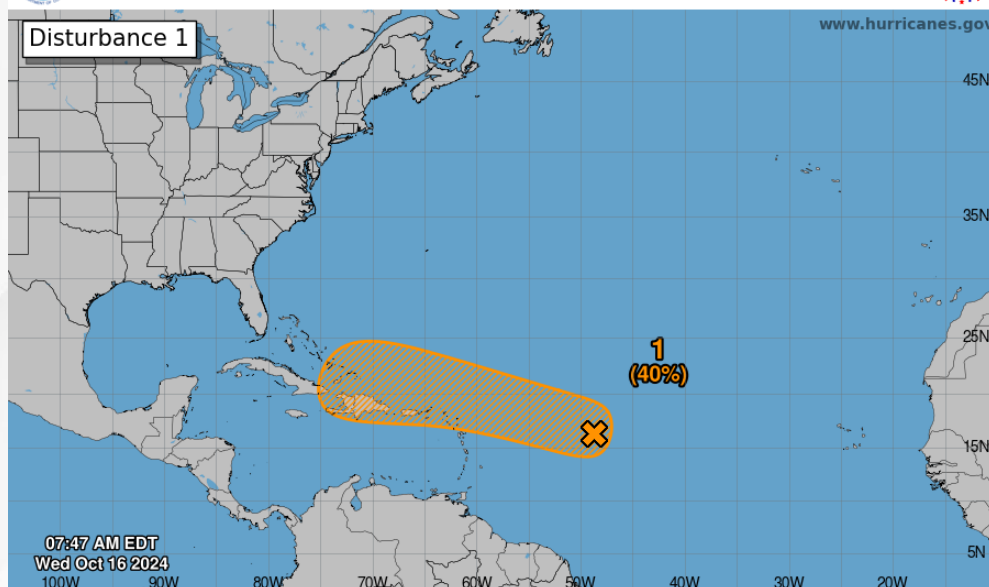
Tropical Weather Outlook

Invest 94L - Central Tropical Atlantic

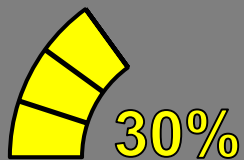


Seven-Day Graphical Tropical Weather Outlook

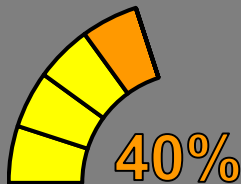
National Hurricane Center Miami, Florida



Current Disturbances and Seven-Day Cyclone Formation Chance: < 40% 40-60% > 60%
Tropical or Sub-Tropical Cyclone: Depression Storm Hurricane
 Post-Tropical Cyclone or Remnants



48 Hour Formation



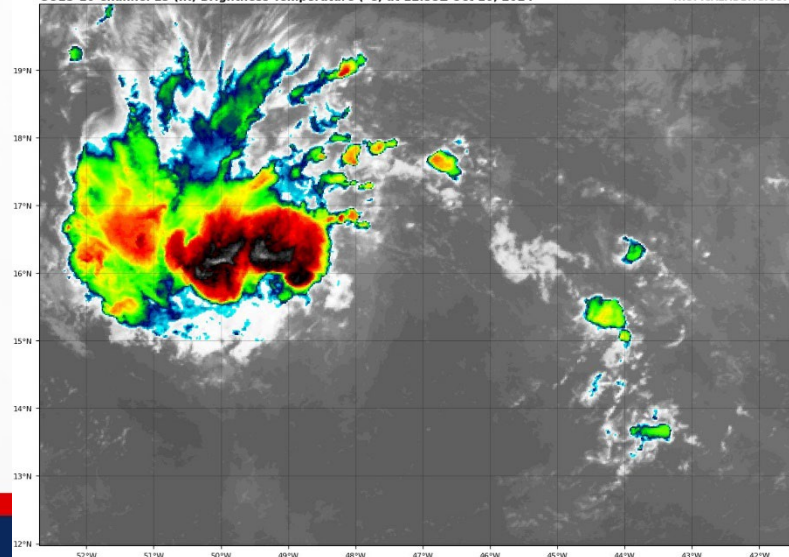
7 Day Formation

A broad area of low pressure located over the central tropical Atlantic is producing disorganized showers and thunderstorms. This system is forecast to move generally westward to west-northwestward, and environmental conditions appear marginally conducive for gradual development during the latter part of the week. A tropical depression could form as the system moves near the Leeward and Virgin Islands late this week. *Invest 94L poses no direct threat to Florida over the next 7-10 days, at least.*

Chance of development through 48 hours...**low...30%.**

Chance of development through 7 days...**medium...40%.**

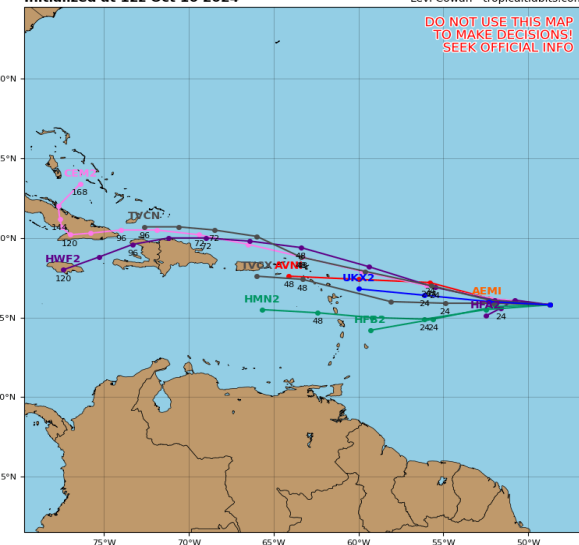
GOES-16 Channel 13 (IR) Brightness Temperature (°C) at 12:35Z Oct 16, 2024



Invest 94L Model Track Guidance

Initialized at 12z Oct 16 2024

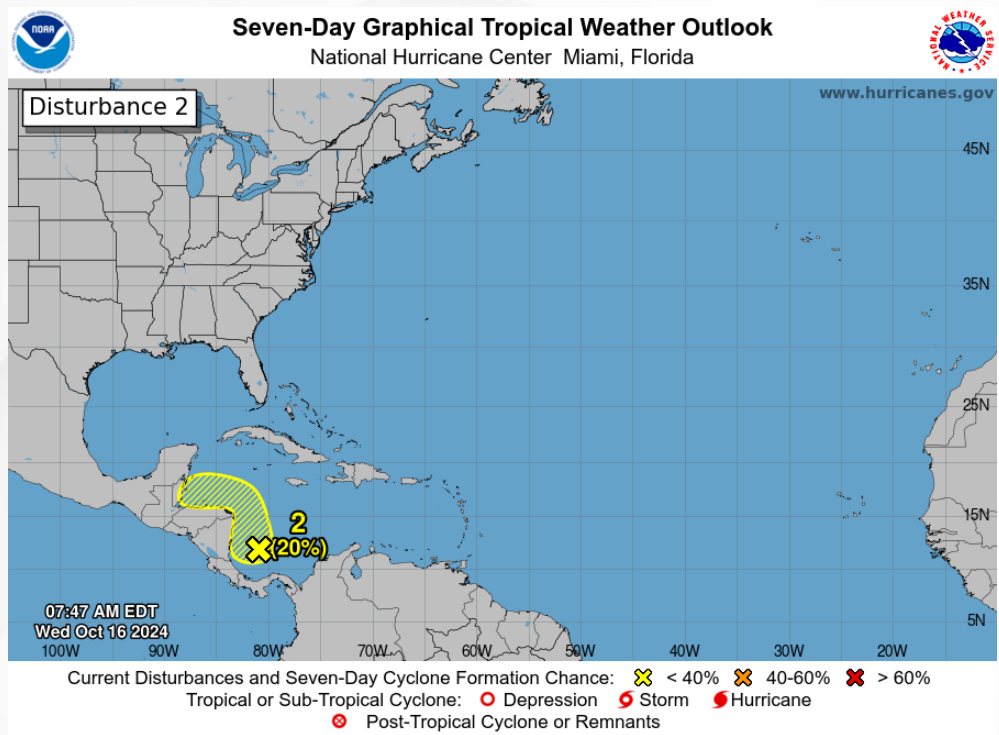
Levi Cowan - tropicaltidbits.com





Tropical Weather Outlook

Disturbance 2 – Western Caribbean Sea



10%

48 Hour Formation

20%

7 Day Formation

Showers and thunderstorms over the southwestern Caribbean Sea are associated with a broad area of low pressure. Some gradual development is possible if the system stays over water while it moves slowly northwestward towards Central America. Regardless of development, locally heavy rainfall is possible across portions of Central America later this week.

This system poses no threat to Florida at this time.

Chance of development through 48 hours...**low...10%.**

Chance of development through 7 days...**low...20%.**

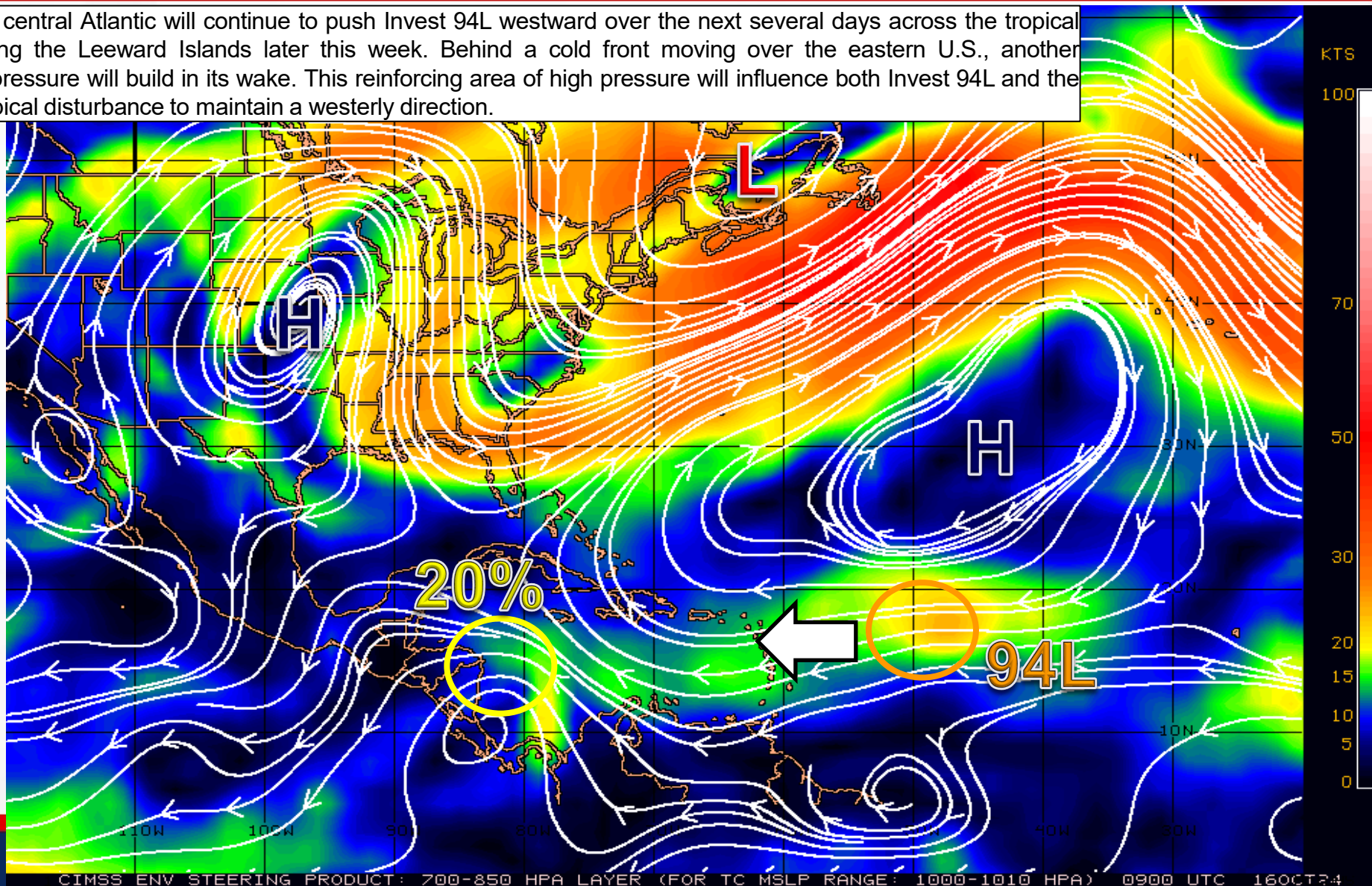


Steering Currents

What is Moving the System?

Color denotes the movement speed through the atmosphere and thin white lines denote direction. Tightly clustered white lines represent faster movement as well.

High pressure over the central Atlantic will continue to push Invest 94L westward over the next several days across the tropical Atlantic and approaching the Leeward Islands later this week. Behind a cold front moving over the eastern U.S., another dominant area of high pressure will build in its wake. This reinforcing area of high pressure will influence both Invest 94L and the potential Caribbean tropical disturbance to maintain a westerly direction.



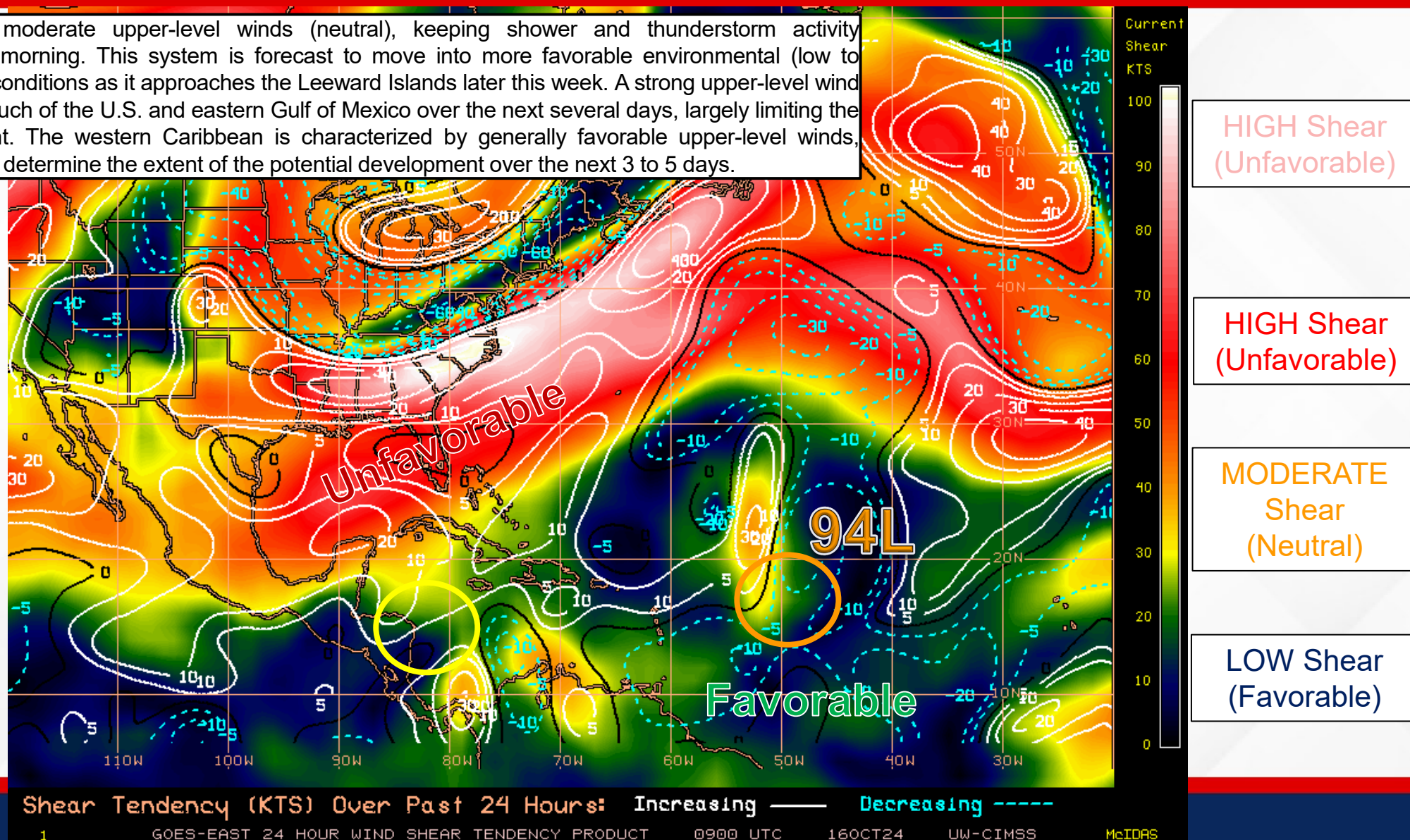


Wind Shear

Is the environment favorable for the system?

Color denotes the amount of wind shear and the lines denote how it have changed over the last 24 hours (dotted lines show decreasing shear and solid lines show increasing).

Invest 94L remains within moderate upper-level winds (neutral), keeping shower and thunderstorm activity disorganized and broad this morning. This system is forecast to move into more favorable environmental (low to moderate upper-level winds) conditions as it approaches the Leeward Islands later this week. A strong upper-level wind pattern looks to set up over much of the U.S. and eastern Gulf of Mexico over the next several days, largely limiting the extent of further development. The western Caribbean is characterized by generally favorable upper-level winds, however, proximity to land will determine the extent of the potential development over the next 3 to 5 days.



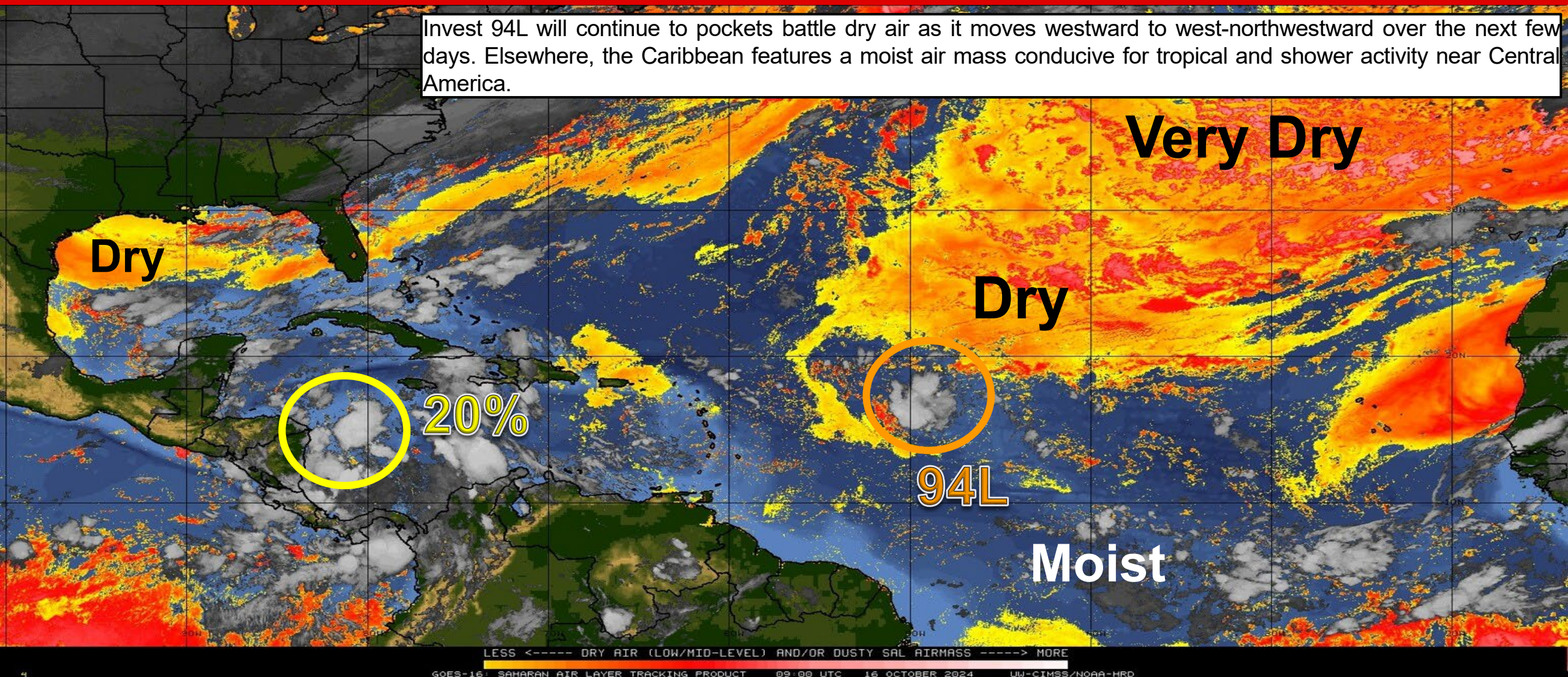


Dry Air & Saharan Dust

Is the environment favorable for the system?

Color denotes concentration of Saharan Dust or dry, stable air.

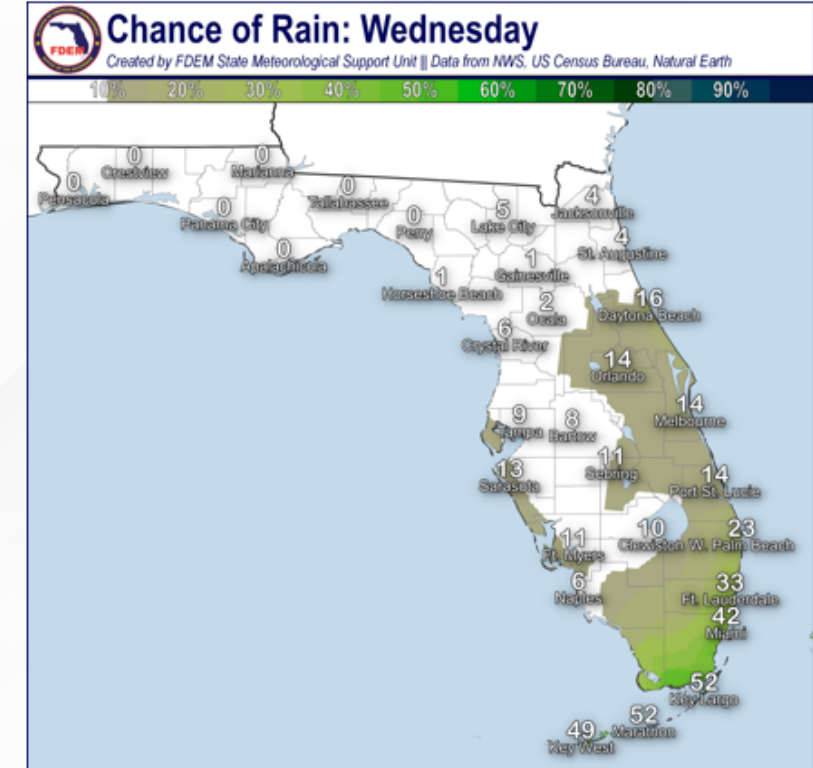
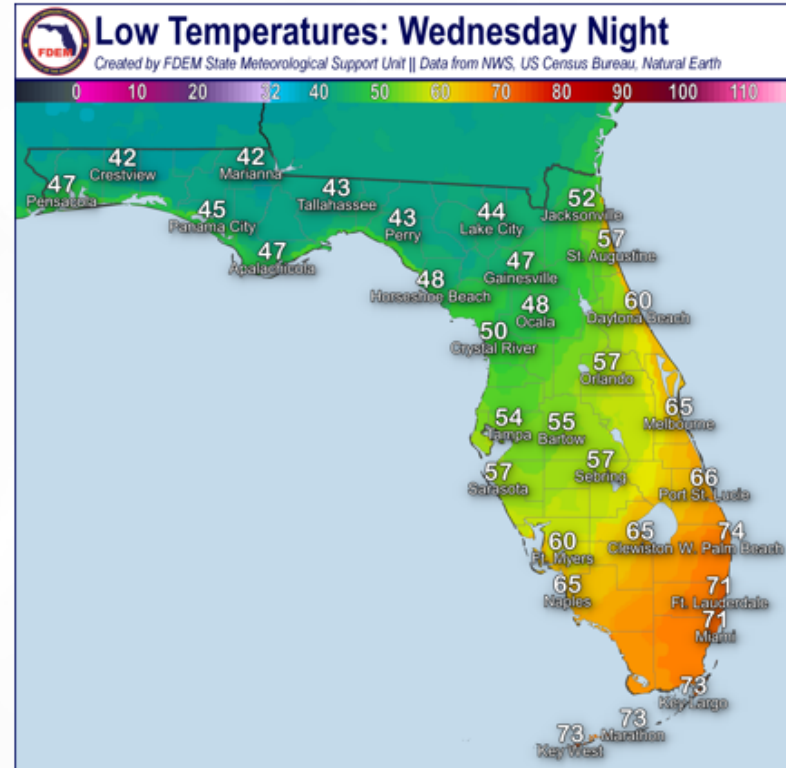
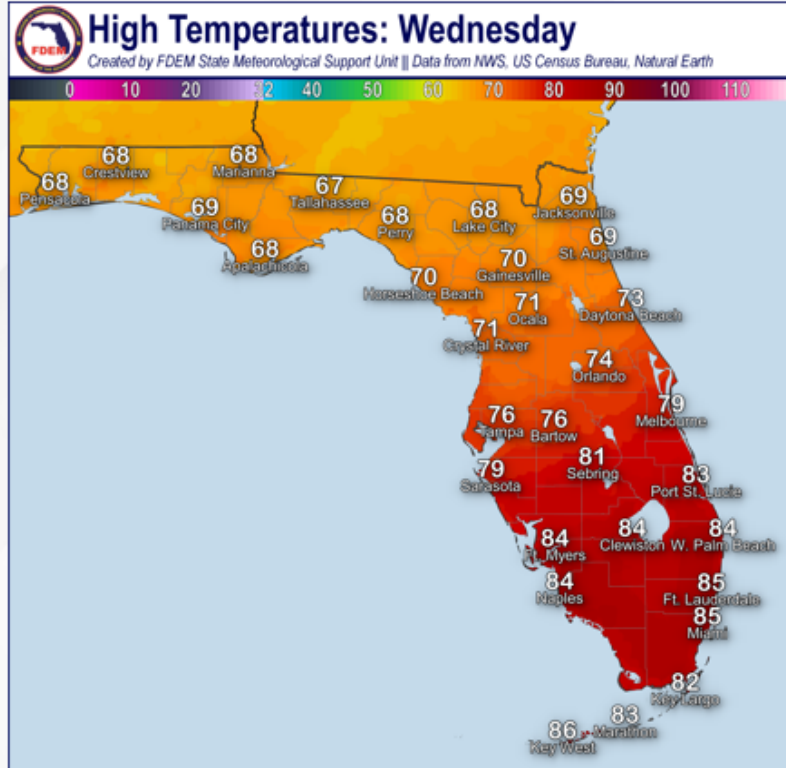
Invest 94L will continue to pocket battle dry air as it moves westward to west-northwestward over the next few days. Elsewhere, the Caribbean features a moist air mass conducive for tropical and shower activity near Central America.





Recovery Weather - Today

Rain Chances, High Temperatures, & Low Temperatures





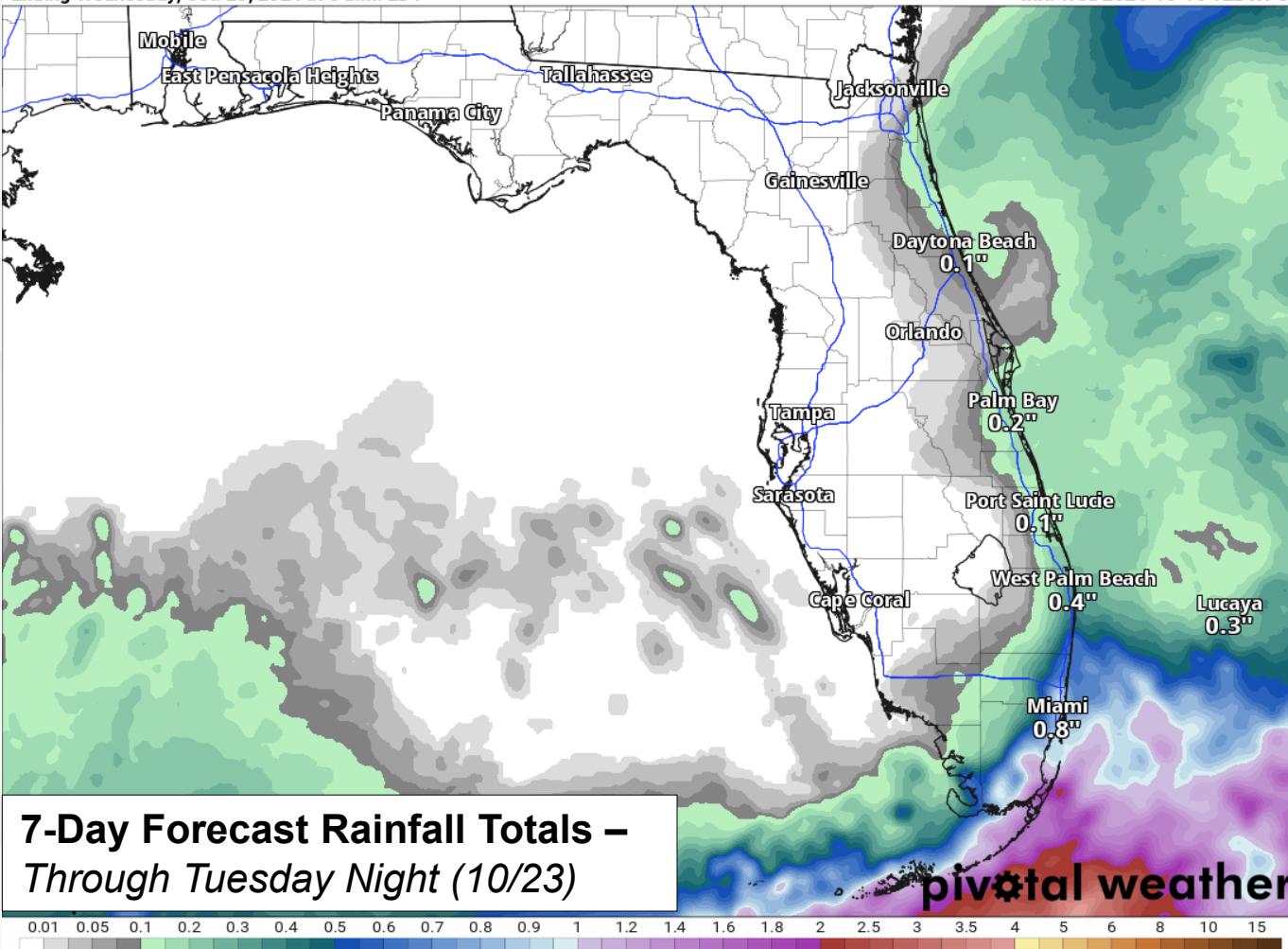
Rainfall Totals – Next 7 Days

From the Weather Prediction Center (WPC)

7-Day Precipitation (in)

Ending Wednesday, Oct. 23, 2024 at 8 a.m. EDT

Init: Wed 2024-10-16 12z WPC

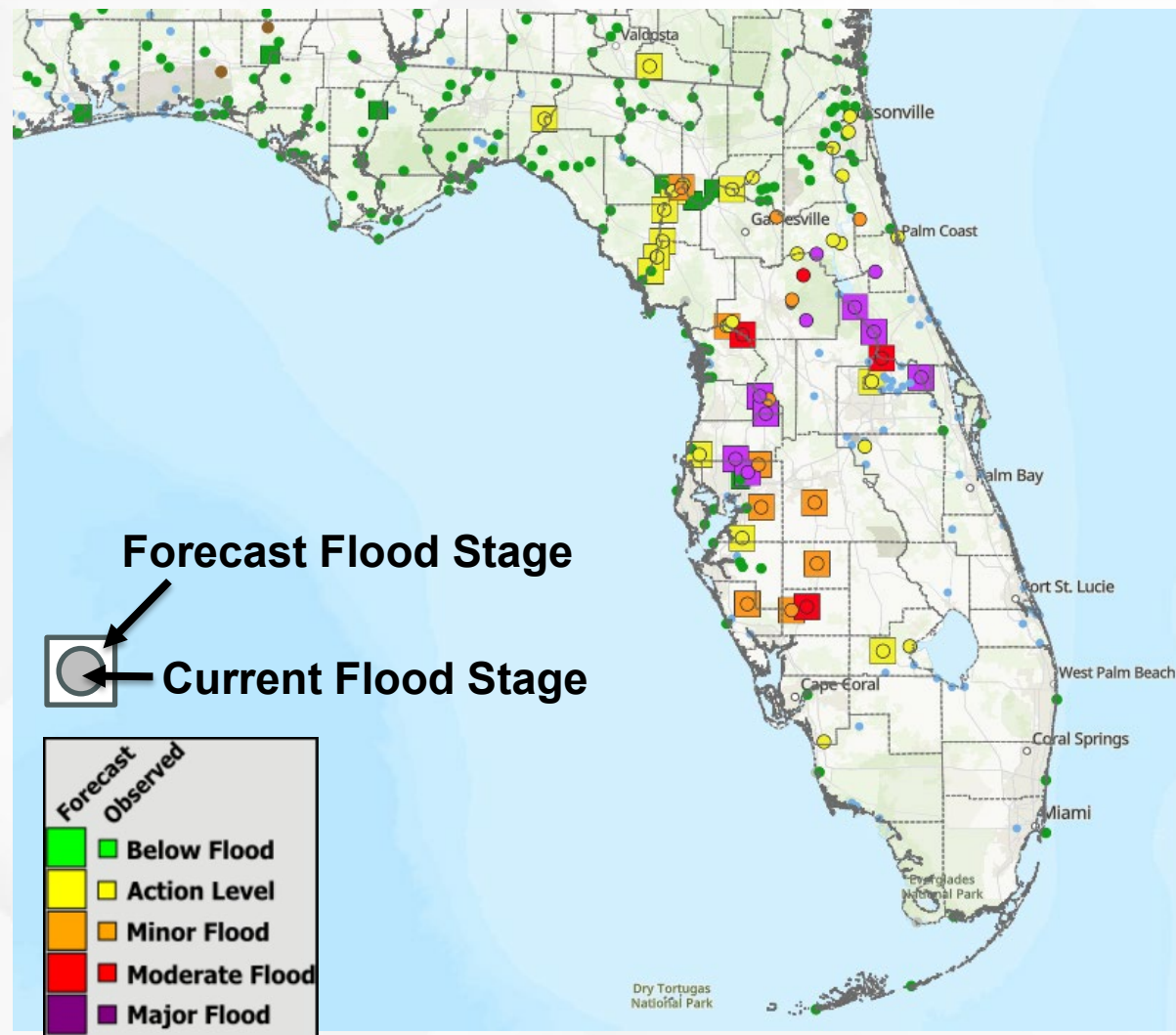


- Cold front continues to advance southward through the state; however, rainfall associated with this front will be minimal.
- The greatest shower and thunderstorm potential will reside along the immediate Florida East Coast and along the Florida Keys over the next 7 days.
- Widely scattered rainfall totals near 1-2" are expected across South Florida and northward along the Treasure and Space Coasts with **locally higher totals upwards of 2-3"** possible along the Southeast Florida Coast and Keys.



Current & Forecast River Conditions

From the National Weather Service



Widespread **moderate to major riverine flooding** continues for West-Central, Central, and Northeast Florida in response to Hurricane Milton.

Major riverine flooding is ongoing for the Withlacoochee River ([at Croom](#) and [at US-301 Trilby](#)), [Cypress Creek at SR-54](#), [Hillsborough River at Morris Bridge](#), and St. Johns River ([at Astor](#), [near Deland](#), and [above Lake Harney](#)). The Withlacoochee River is still very slowly rising at US-301 and Croom; however, US-301 is nearing its expected crest. Similarly, the ability for trapped water to flush out the St. Johns River has allowed for water levels to crest and see a slight decline before rising over the next few days with the return of onshore winds and King Tides. Both the Hillsborough River and Cypress Creek are seeing water levels continue to decline.

Moderate flooding is ongoing along the [Withlacoochee River near Holder at SR-200](#), [Hillsborough River at Zephyrhills](#), [Peace River at SR-70 Arcadia](#), [St. Johns River near Sanford](#). The Withlacoochee River near Holder continues to see water levels increase, nearing their forecast crest level, as crest waves from further upstream continue to flow through the basin. The St. Johns River near Sanford is also expected to see water levels continue to rise as water continued to filter through the basins and struggle to discharge due to onshore flow and trapped tides. Water levels will continue to gradually decline along the Hillsborough and Peace Rivers.

Minor Flooding continues along the [Alafia River at Lithia Pinecrest Road at Lithia](#), [Myakka river at Myakka River State Park](#), Peace River ([at Zolfo Springs](#) and [at Bartow](#)), and [Horse Creek near Arcadia SR-72](#).

The [Withlacoochee River at US-41 Dunnellon](#) is in Action Stage (bank-full) and is expected to see water levels reach **Minor Flood Stage** in the next day or so.



River Flood Warnings

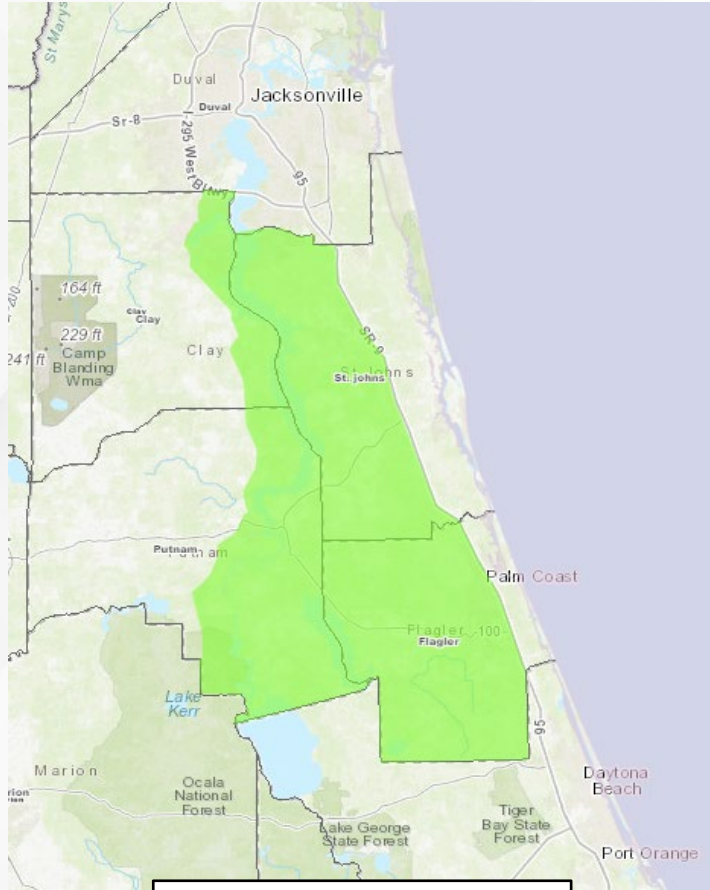
From the National Weather Service

River Gauge	County(ies) Affected	Current Level	Crest Level	Record Level	Status	Crest Day	Warning Expires
Alafia River at Lithia Pinecrest Road at Lithia	Hillsborough	Minor: 14.61 ft	Major: 24.34 ft	28.50 ft	Falling	11-Oct	0045 EDT 18-Oct
Cypress Creek at SR-54 Worthington Gardens	Pasco	Major: 14.17 ft	Major: 15.08 ft	15.08 ft	Falling	13-Oct	Until Further Notice
Hillsborough River near Zephyrhills	Hillsborough	Minor: 12.80 ft	Major: 17.14 ft	17.14 ft	Falling	11-Oct	Until Further Notice
Hillsborough River at Morris Bridge	Hillsborough	Major: 36.20 ft	Major: 38.16 ft	38.16 ft	Falling	13-Oct	Until Further Notice
Horse Creek near Arcadia at SR-72	DeSoto	Minor: 12.83 ft	Moderate: 14.37 ft	21.20 ft	Falling	11-Oct	Until Further Notice
Myakka River at Myakka River State Park	Sarasota	Minor: 8.08 ft	Moderate: 8.57 ft	12.80 ft	Falling	13-Oct	Until Further Notice
Peace River at SR-60 Bartow	Polk	Minor: 8.81 ft	Minor: 8.84 ft	11.10 ft	Steady	16-Oct	Until Further Notice
Peace River at Zolfo Springs	Hardee	Minor: 16.86 ft	Minor: 18.72 ft	27.20 ft	Falling	Crested	Until Further Notice
Peace River at SR-70 Arcadia	DeSoto	Moderate: 14.30 ft	Moderate: 14.50 ft	23.70 ft	Falling	13-Oct	Until Further Notice
Santa Fe River at Three Rivers Estates	Columbia, Gilchrist, Suwannee	Minor: 18.56 ft	Minor: 18.89 ft	33.40 ft	Steady	16-Oct	Until Further Notice
St. Johns River at Astor	Volusia, Lake	Major: 4.41 ft	Major: 4.81 ft	4.81 ft	Steady	Secondary	Until Further Notice
St. Johns River near Deland	Lake	Major: 5.49 ft	Major: 5.60 ft	6.30 ft	Steady	TBD	Until Further Notice
St. Johns River near Sanford	Seminole	Moderate: 7.03 ft	Moderate: 7.40 ft	9.00 ft	Rising	TBD	Until Further Notice
St. Johns River above Lake Harney	Seminole, Volusia	Major: 10.15 ft	Major: 10.15 ft	12.70 ft	Cresting	TBD	Until Further Notice
Withlacoochee River at US-41 Dunnellon	Citrus, Marion	Action: 28.97 ft	Minor: 29.10 ft	33.00 ft	Rising	TBD	Until Further Notice
Withlacoochee River near Holder	Cirtus	Moderate: 9.12 ft	Moderate: 9.40 ft	13.30 ft	Rising	TBD	Until Further Notice
Withlacoochee River at Croom	Pasco, Sumter	Major: 12.23 ft	Major: 13.10 ft	15.20 ft	Rising	TBD	Until Further Notice
Withlacoochee River at US-301 Trilby	Hernando, Pasco	Major: 19.39 ft	Major: 19.50 ft	20.40 ft	Rising	TBD	Until Further Notice



Coastal Flooding

From the National Weather Service (NWS)



St. Johns River

Coastal Flood Advisory

South Florida

Coastal Flood Statement
Coastal Flood Advisory



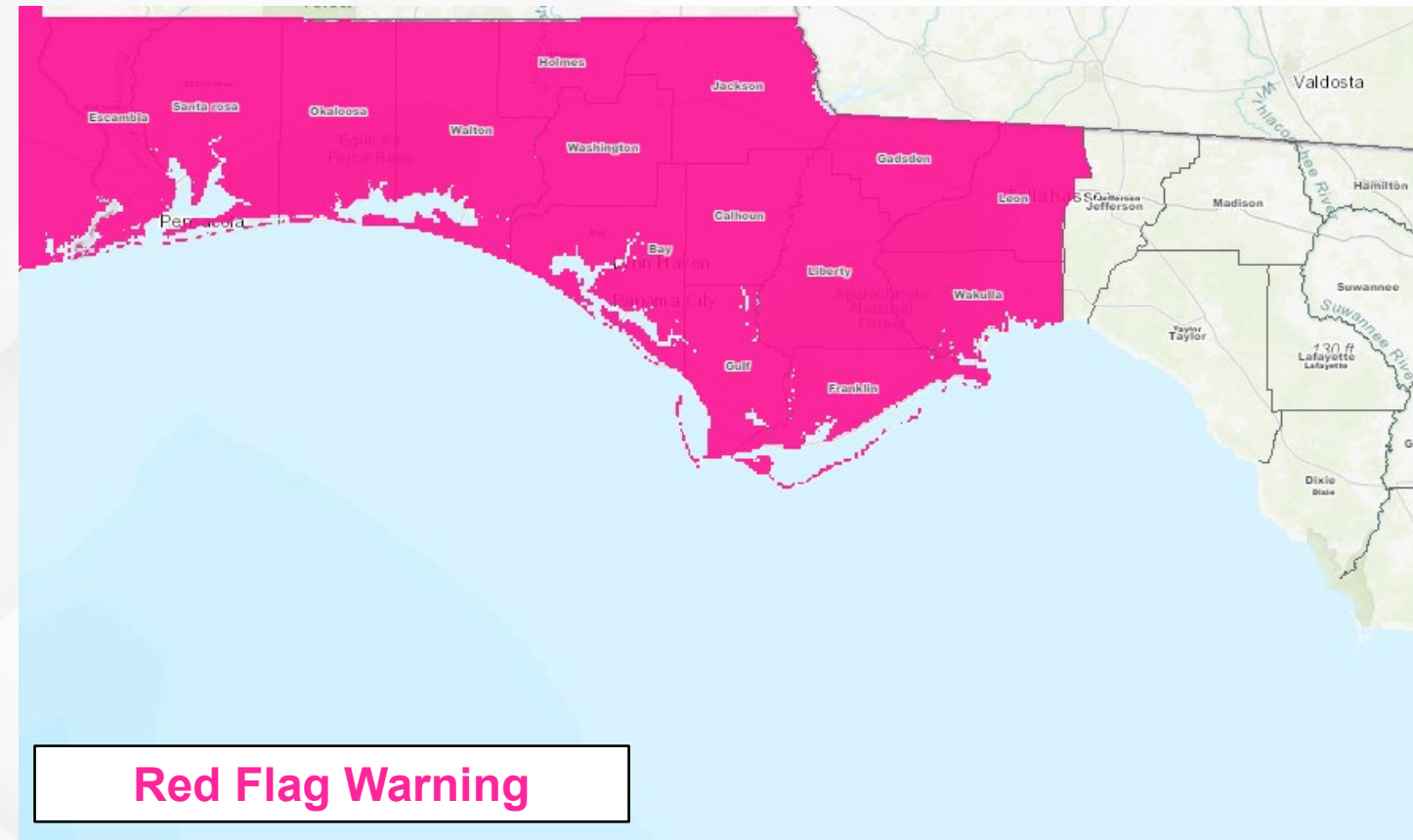
A **Coastal Flood Advisory** remains in effect for the St. Johns River Basin as **widespread minor to isolated moderate coastal flooding**. Water levels will rise this evening and the rest of the week as high astronomical tides (King Tides) and a north to northeast wind combine to produce water levels of 1-2' above normally dry ground as early as the Wednesday evening high tide cycle. As we get closer to the Full Moon on 10/17, the astronomical high tide is already approaching the 2' threshold.

Coastal Flood Statements have been raised for the southern Florida Peninsula and Florida Keys as the King Tides return. Onshore winds behind the advancing cold front could exacerbate **coastal flooding** impacts, especially in low-lying coastal areas. **Coastal Flood Advisories** are now in effect along the Florida Treasure Coast for **minor coastal flooding** at times of high tide.



Elevated Wildfire Conditions

From the National Weather Service (NWS)



A **Red Flag Warning** has been issued for the Florida Panhandle through 8:00 PM EDT/7:00 PM CDT this evening. Relative humidity values will approach critical thresholds (25-30%) and strong northerly wind gusts of 25-30 mph will lead to **elevated to critical wildfire concerns**.

- Any wildfire that ignites will catch and spread quickly.
- Fire safety precautions should be exercised to prevent fires; *burning is strongly discouraged*.



Summary

FOUO – For Government Official Use Only

Eastern Tropical Atlantic – Invest 94L:

- A broad area of low pressure located over the central tropical Atlantic is producing disorganized showers and thunderstorms.
- This system is forecast to move generally westward to west-northwestward, and environmental conditions appear marginally conducive for gradual development during the latter part of the week.
- The NHC is outlooking a **low (30%) chance of development** over the next 48 hours, and a **medium (40%) chance of development** over the next 7 days.
- *This system poses no direct threat to Florida over the next 7-10 days at least.*

Western Caribbean Sea:

- Showers and thunderstorms over the southwestern Caribbean Sea are associated with a broad area of low pressure.
- Some gradual development is possible if the system stays over water while it moves slowly northwestward towards Central America.
- The NHC is outlooking a **low (10%) chance of development** over the next 48 hours, and a **low (20%) chance of development** over the next 7 days.
- *This system poses no threat to Florida at this time.*

Florida Outlook:

- Mostly sunny and pleasant conditions expected statewide today with isolated to scattered showers and thunderstorms across eastern and southern portions of the Peninsula and the Keys.
- Relative humidity values approaching critical thresholds and strong post-frontal winds (gusts of 25-30 mph) will lead to elevated wildfire concerns along the western Florida Panhandle.
 - **Red Flag Warnings** are in effect for the afternoon hours as wildfires may easily ignite and rapidly spread.
- Widespread heavy rainfall from Hurricane Milton has led to a riverine response across numerous basins extending from West-Central Florida, Central Florida and Northeast Florida.
 - **Widespread moderate to major riverine flooding** continues across West-Central, Central, and Northeast Florida rivers, creeks, and waterways with numerous River Flood Warnings in effect. Many water level records have been broken with the excess heavy rainfall from Hurricane Milton.
 - Many of these rivers have crested and begun to slowly decline; however, water levels continue to rise along portions of the Withlacoochee, Peace, and St. Johns Rivers.
- A Coastal Flood Advisory remains in effect for the St. Johns River Basin as widespread minor to isolated moderate coastal flooding.
 - Water levels will rise this evening and the rest of the week as high astronomical tides (King Tides) and a north to northeast wind combine to produce water levels of 1-2' above normally dry ground as early as the Wednesday evening high tide cycle.
 - As we get closer to the Full Moon on 10/17, the astronomical high tide is already approaching the 2' threshold.
- Coastal Flood Statements have been raised for the southern Florida Peninsula and Florida Keys as the King Tides return. Onshore winds behind the advancing cold front could exacerbate coastal flooding impacts, especially in low-lying coastal areas. Coastal Flood Advisories are now in effect along the Florida Treasure Coast for minor coastal flooding at times of high tide.

The next names on the list or Nadine and Oscar.

The next briefing packet will be issued on Thursday Morning. For the latest information, please visit the National Hurricane Center website.



Tropical Update

FOUO – For Government Official Use Only



Created by:

Caitlyn Gillespie, Deputy State Meteorologist

Caitlyn.Gillespie@em.myflorida.com

State Meteorological Support Unit

Florida Division of Emergency Management

Users wishing to subscribe (approval pending) to this distribution list, register at:

https://public.govdelivery.com/accounts/FLDEM/subscriber/new?topic_id=SERT_Met_Tropics.

Other reports available for subscription are available at:

<https://public.govdelivery.com/accounts/FLDEM/subscriber/new?preferences=true>