



Tropical Update



6:00 AM EDT

Thursday, October 10, 2024

Hurricane Milton

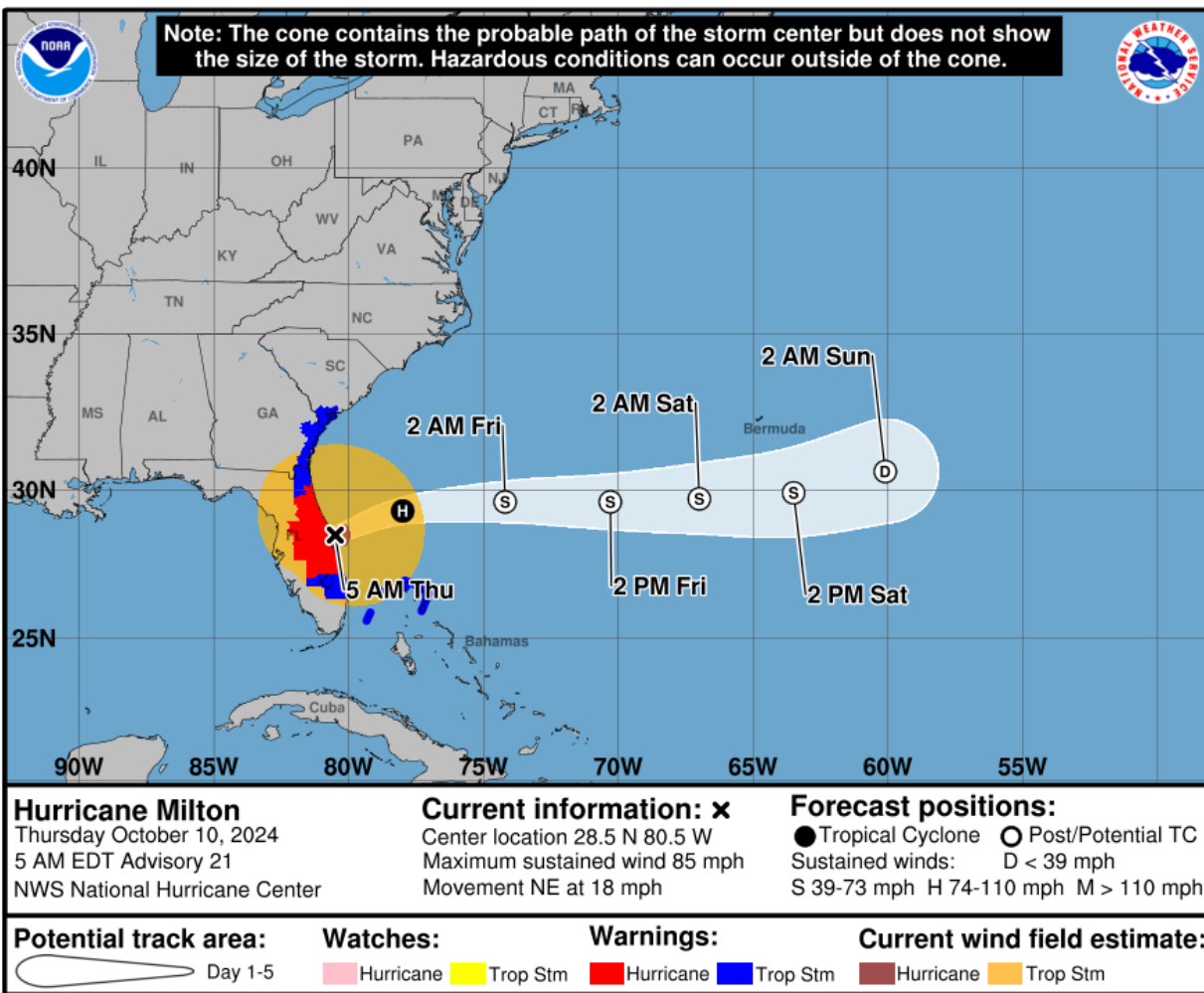
Milton Moving Off the Florida East Coast; Still Producing Damaging Hurricane-Force Winds and Heavy Rainfall In East-Central Florida

This update is intended for government and emergency response officials, and is provided for informational and situational awareness purposes only. Forecast conditions are subject to change based on a variety of environmental factors. For additional information, or for any life safety concerns with an active weather event please contact your County Emergency Management or Public Safety Office, local National Weather Service forecast office, or visit the National Hurricane Center website at www.hurricanes.gov.



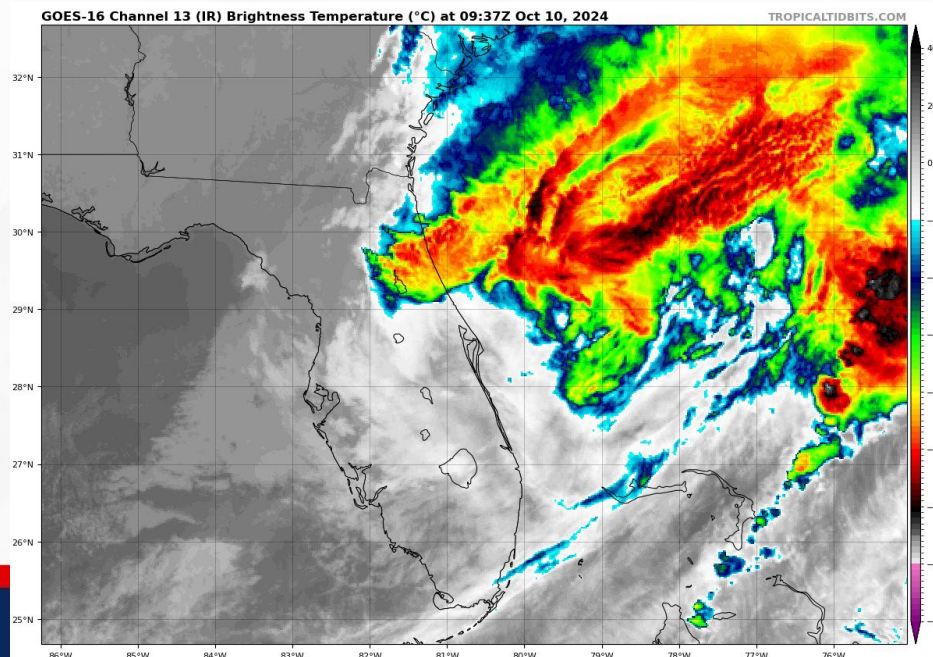
Hurricane Milton

From the National Hurricane Center (NHC)



- **Location:** 10 miles NE of Cape Canaveral, FL
- **Maximum Sustained Winds:** 105 mph, Category 2
- **Current Movement:** NE at 18 mph

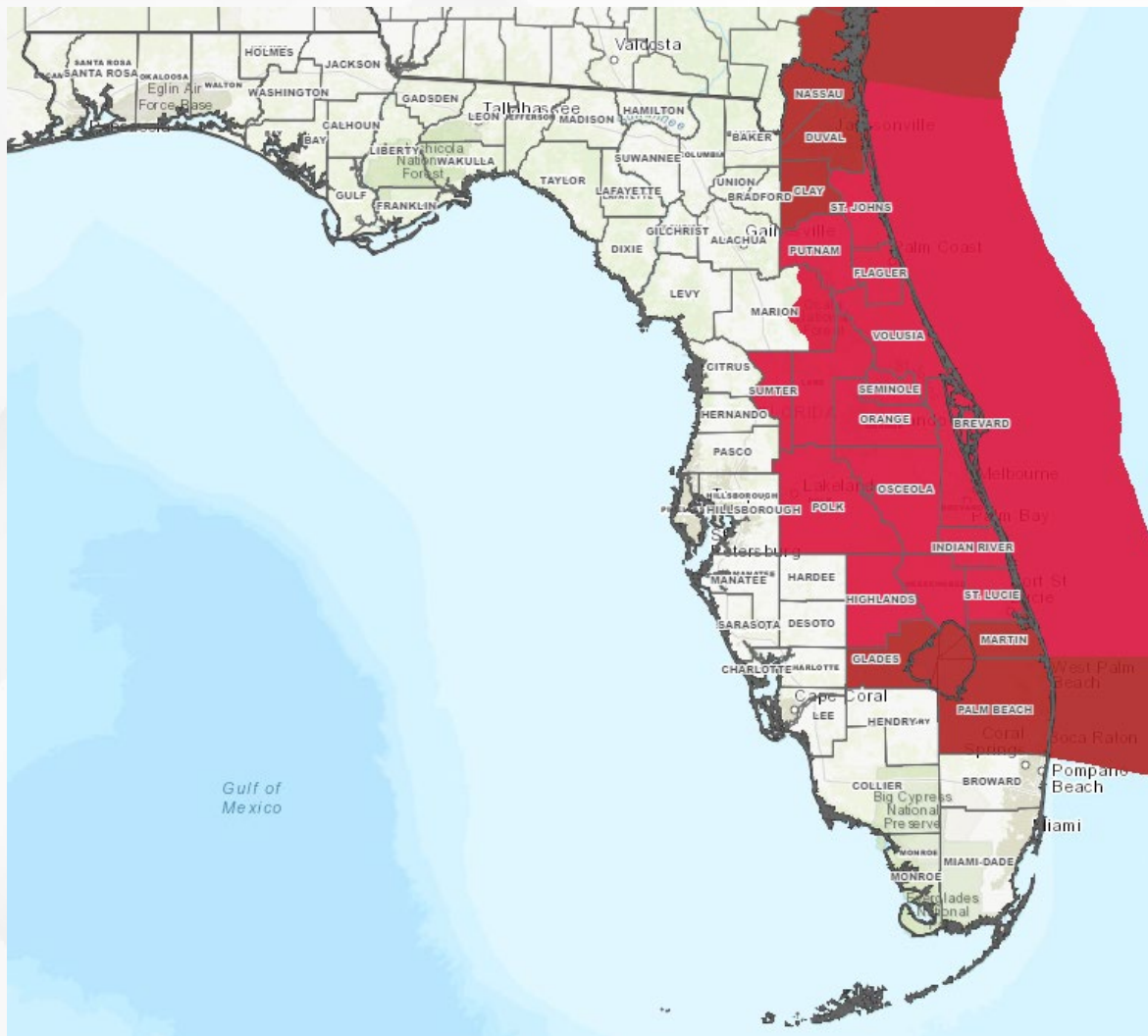
This general motion is expected to continue today, followed by a turn toward the east tonight. On the forecast track, the center of Milton will continue to move away from Florida and to the north of the Bahamas today. Maximum sustained winds are near 85 mph with higher gusts, making Milton a Category 1 hurricane. Gradual weakening is expected, but Milton is forecast to become a powerful extratropical low tonight.





Current Tropical Wind Watches/Warnings

As of 5:00 AM EDT Thursday



Hurricane Warning: St. Johns, Putnam, Flagler, Eastern Marion, Volusia, Lake, Sumter, Orange, Seminole, Brevard, Polk, Osceola, Highlands, Okeechobee, Indian River, St. Lucie

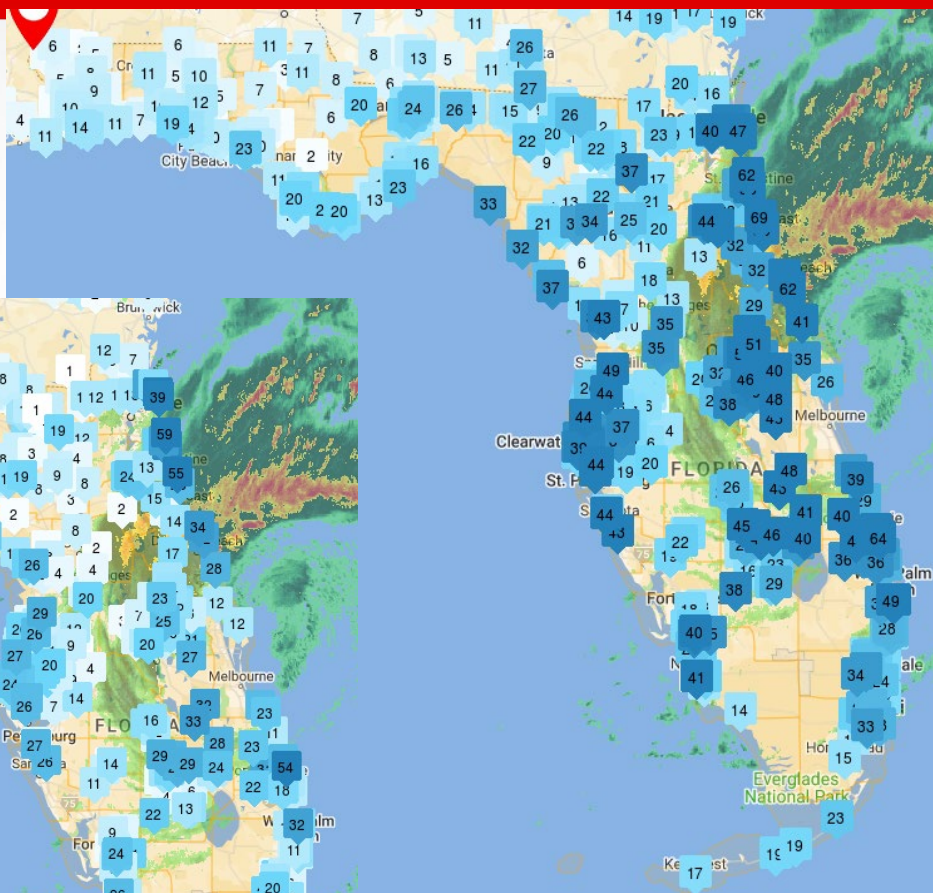
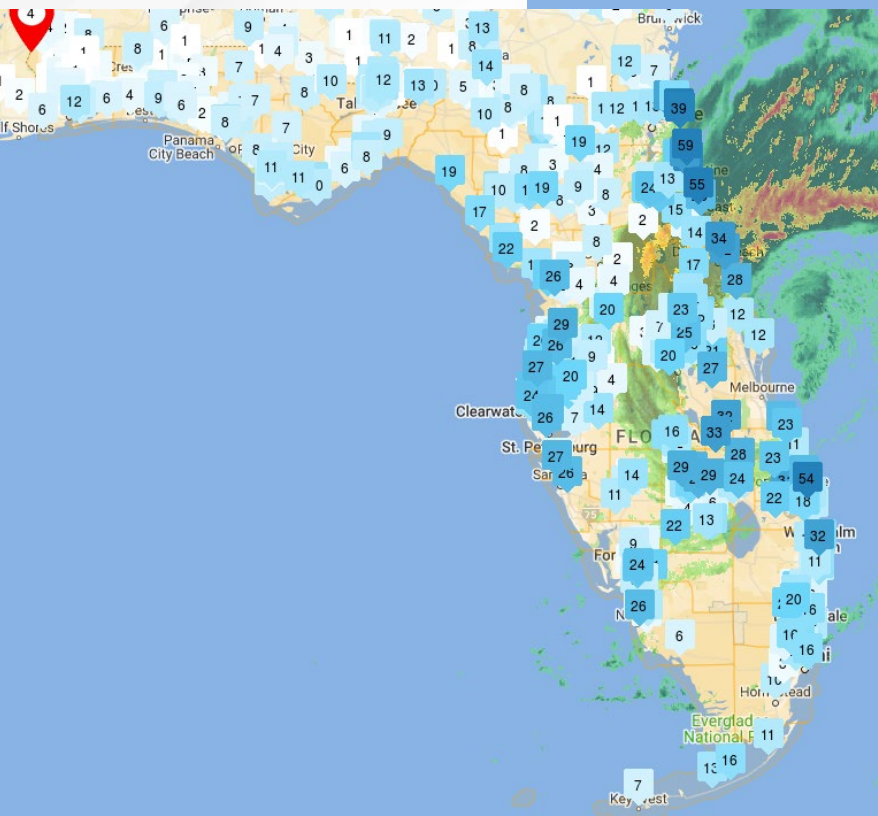
Tropical Storm Warning: Nassau, Duval, Clay, Glades, Martin, Palm Beach, Lake Okeechobee



WeatherSTEM Wind Observations

6:00 AM EDT Thursday

Sustained Wind Speeds



Maximum Wind Gusts

Conditions have begun to improve across western and southern portions of the Peninsula this morning. Damaging hurricane-force winds, especially in gusts, will continue for a few more hours in east-central and northeast Florida.

A sustained wind of 75 mph and a gust to 83 mph was recently reported at a Weatherstem station in Marineland.

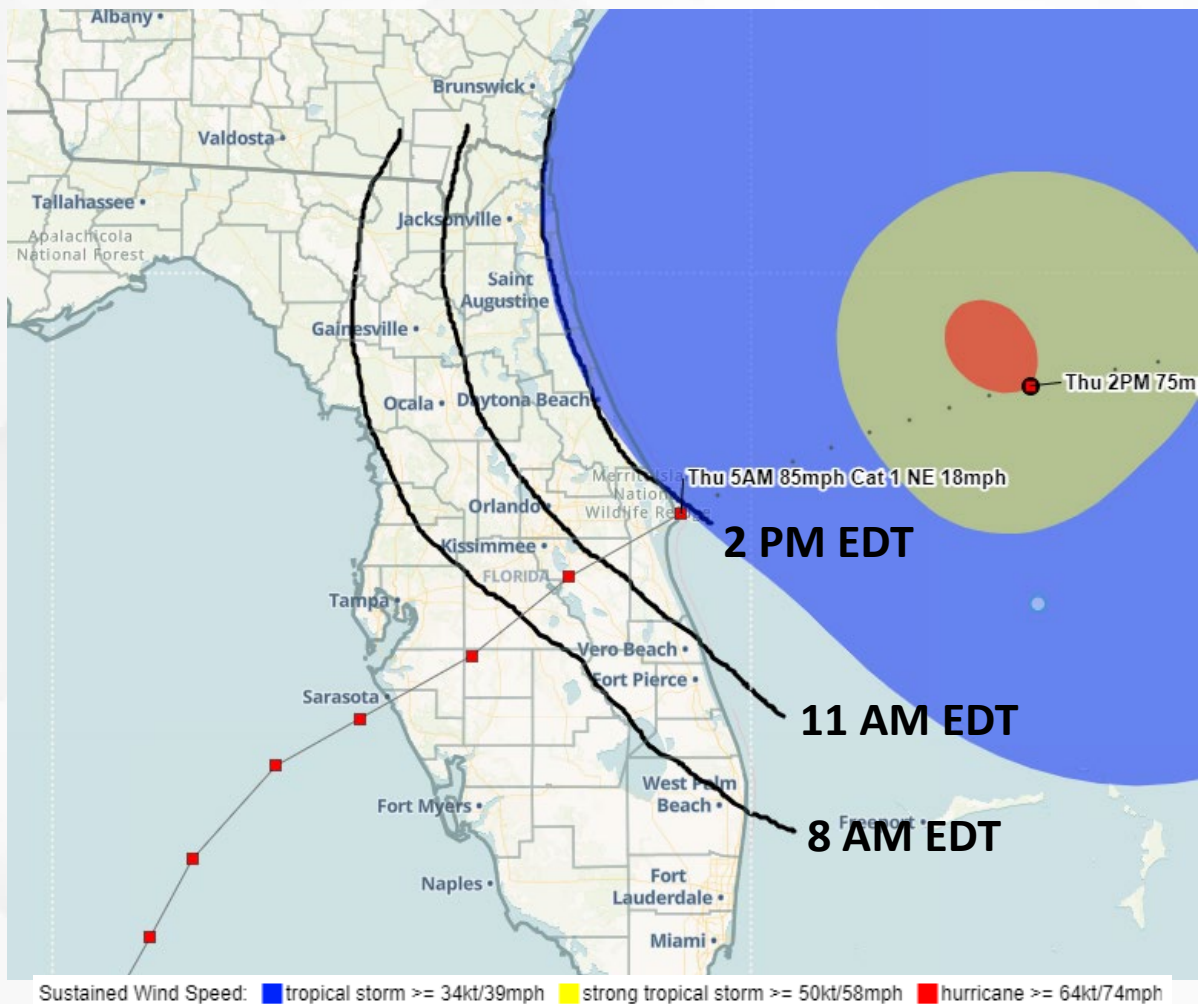
A sustained wind of 61 mph and a gust to 76 mph was recently reported at a Weatherstem station on South Hutchinson Island.

A sustained wind of 60 mph and a gust of 87 mph was recently reported at Daytona Beach International Airport.



Wind Departure Timing - Today

From the National Hurricane Center (NHC)



Conditions will gradually begin to improve from southwest to northeast across the Peninsula through the morning and afternoon hours today.

Sustained tropical-storm force winds have begun to dissipate across Southwest Florida and the southern Tampa Bay Area. Tropical storm-force winds will linger along central and northern portions of the Tampa Bay Area over the next couple of hours before dissipating, leaving behind breezy conditions.

Tropical storm-force winds will begin to exit the Nature Coast and Suwannee River Valley through the early to mid-morning hours but linger across more interior portions of the northern Peninsula until closer to mid-day.

Northeast Florida and portions of East-Central Florida will likely see tropical-storm force winds persist through the morning hours before gradually tapering off through the early afternoon hours.

Even after tropical-storm force winds have dissipated, breezy winds will linger across the state. **Wind Advisories** have been issued across the Southeastern Panhandle, Big Bend, Suwannee Valley, and coastal portions of South Florida.



Key Messages

From the National Hurricane Center (NHC)

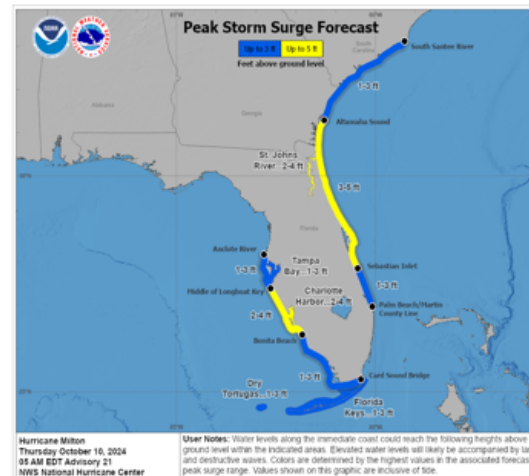
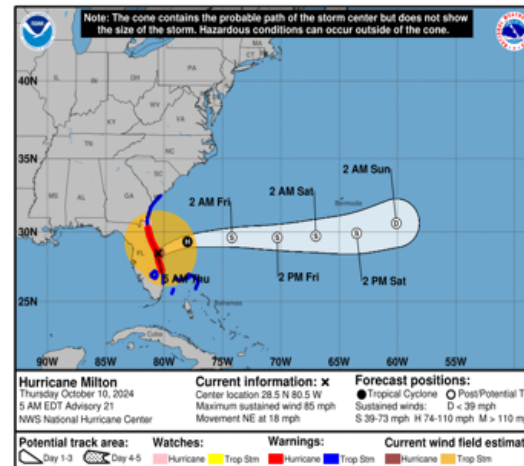


Key Messages for Hurricane Milton

Advisory 21: 5:00 AM EDT Thu Oct 10, 2024



1. There is a danger of life-threatening storm surge along the coast from east-central Florida northward to southern Georgia, where a Storm Surge Warning remains in effect.
2. Damaging hurricane-force winds, especially in gusts, will continue for a few more hours in east-central and northeastern Florida. Residents are urged to remain in an interior room and away from windows.
3. Heavy rainfall across the central to northern Florida Peninsula through this morning continues to bring the risk of considerable flash and urban flooding along with moderate to major river flooding, especially in areas where coastal and inland flooding combine to increase the overall flood threat.

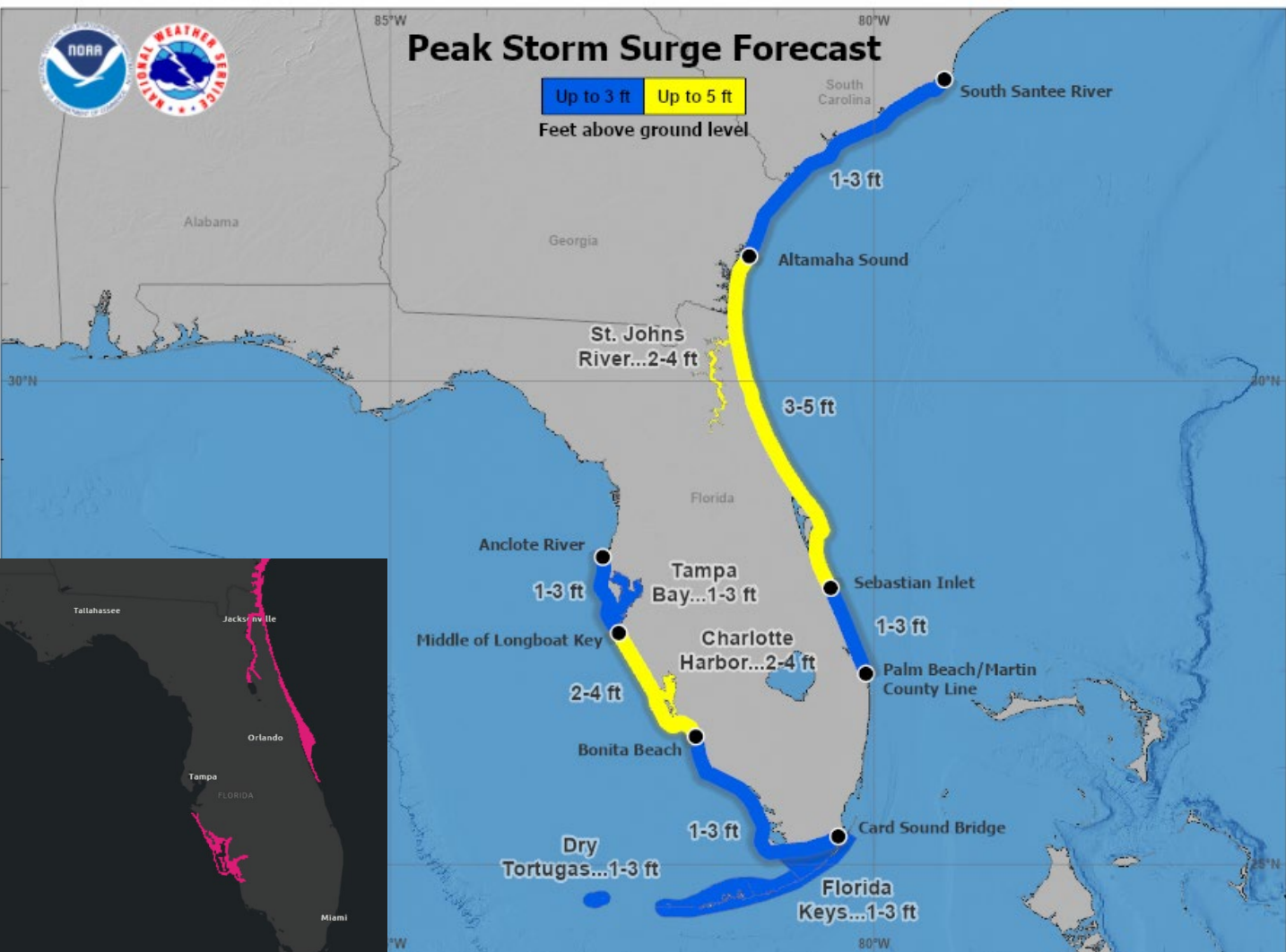


For more information go to hurricanes.gov



Current Storm Surge Watches & Warnings

As of 5:00 AM EDT Thursday



Hurricane Milton
Thursday October 10, 2024
05 AM EDT Advisory 21
NWS National Hurricane Center

User Notes: Water levels along the immediate coast could reach the following heights above ground level within the indicated areas. Elevated water levels will likely be accompanied by large and destructive waves. Colors are determined by the highest values in the associated forecast peak surge range. Values shown on this graphic are inclusive of tide.

Water levels will remain elevated into this morning along portions of the Sun Coast following last night storm surge. There is a danger of life-threatening storm surge along the coast from east-central Florida northward to the Florida state line.

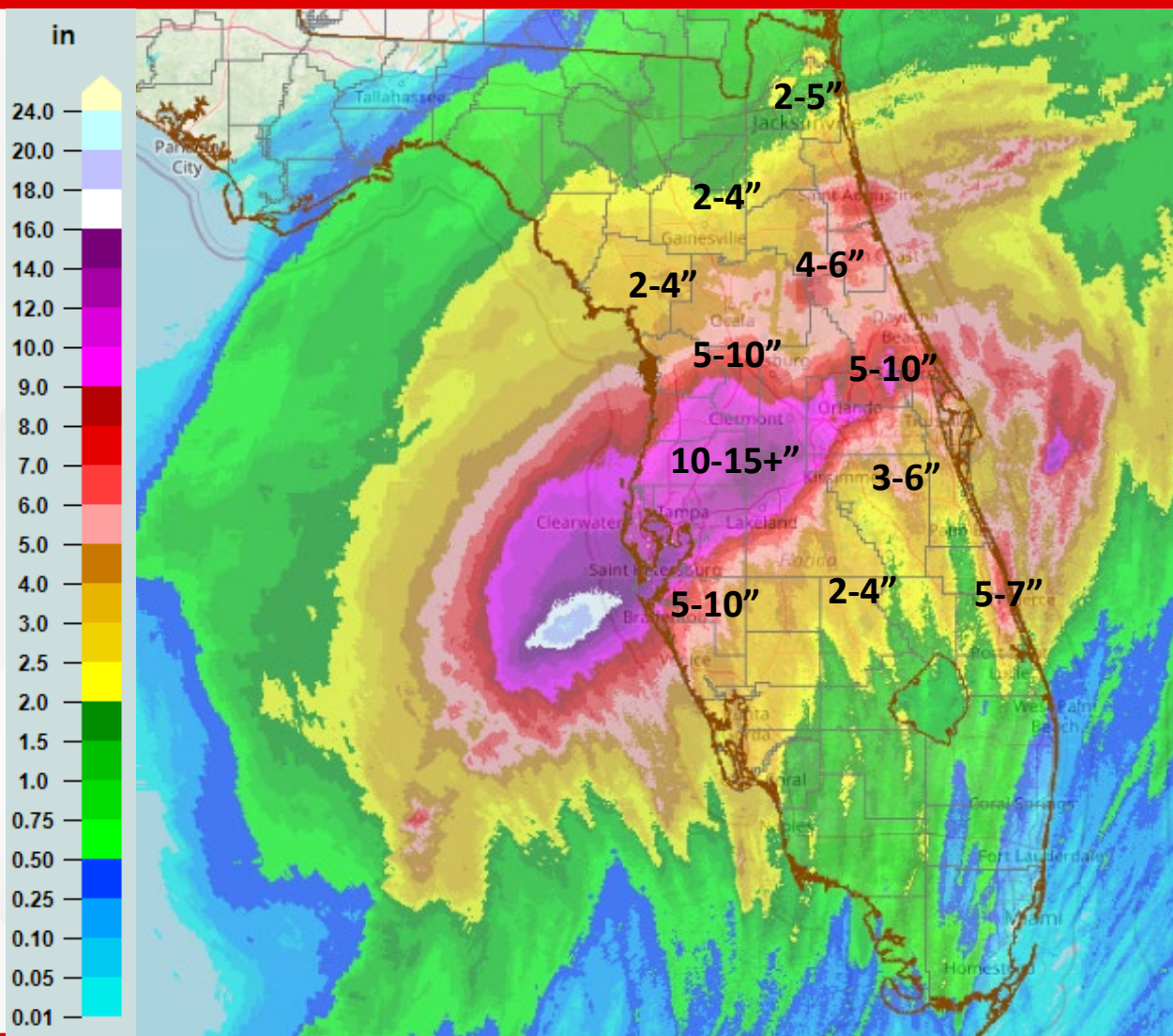
Storm Surge Warnings

- Manatee/Sarasota County Line to Lee/Collier County Line, including Charlotte Harbor
- Brevard/Indian River County Line northward to the Florida State Line, including the St. Johns River.



24-Hour Observed Rainfall Totals

As of 6:00 AM EDT Thursday



Over the last 24-hours, **heavy rainfall totals upwards of 10-15"** has been observed across much of the Tampa Bay Area, Nature Coast, and spreading eastward along and north of the I-4 corridor towards Sanford from Hurricane Milton.

Isolated higher pockets up to 18" are speckled throughout Pinellas and Coastal Hillsborough Counties.

5-10" of rainfall has been observed further northward towards Gainesville, along eastern portions of the I-4 corridor, and south of the western I-4 corridor towards Sarasota.

2-5" of rainfall expands further northward towards the I-4 corridor and southward towards Lake Okeechobee and into Southwest Florida with locally higher totals near 5-7".

Rainfall totals are expected to continue increasing as heavy rainfall continues with Milton as the system moves inland and crosses the Florida Peninsula.



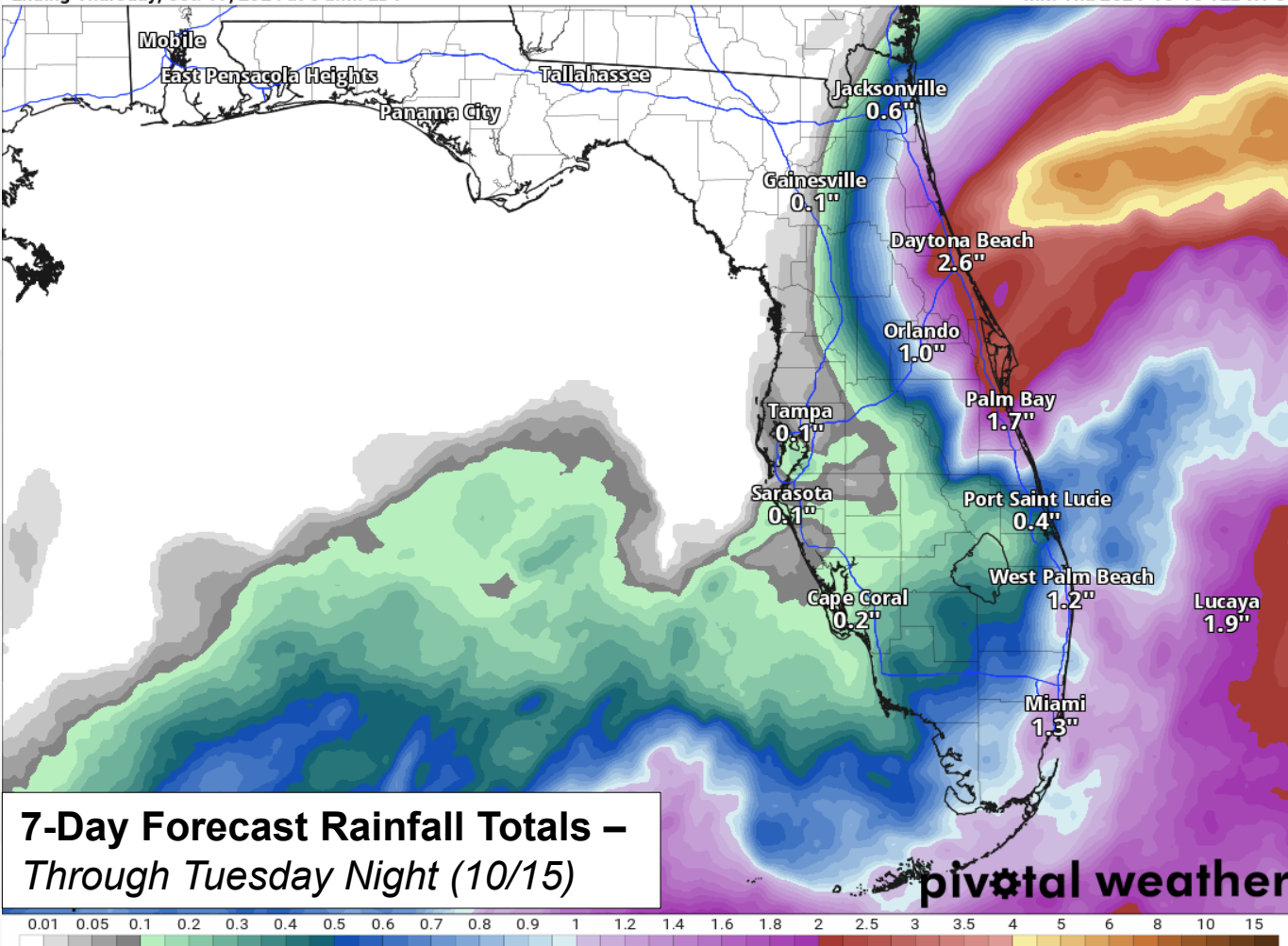
Rainfall Totals – Next 7 Days

From the Weather Prediction Center (WPC)

7-Day Precipitation (in)

Ending Thursday, Oct. 17, 2024 at 8 a.m. EDT

Init: Thu 2024-10-10 12z WPC



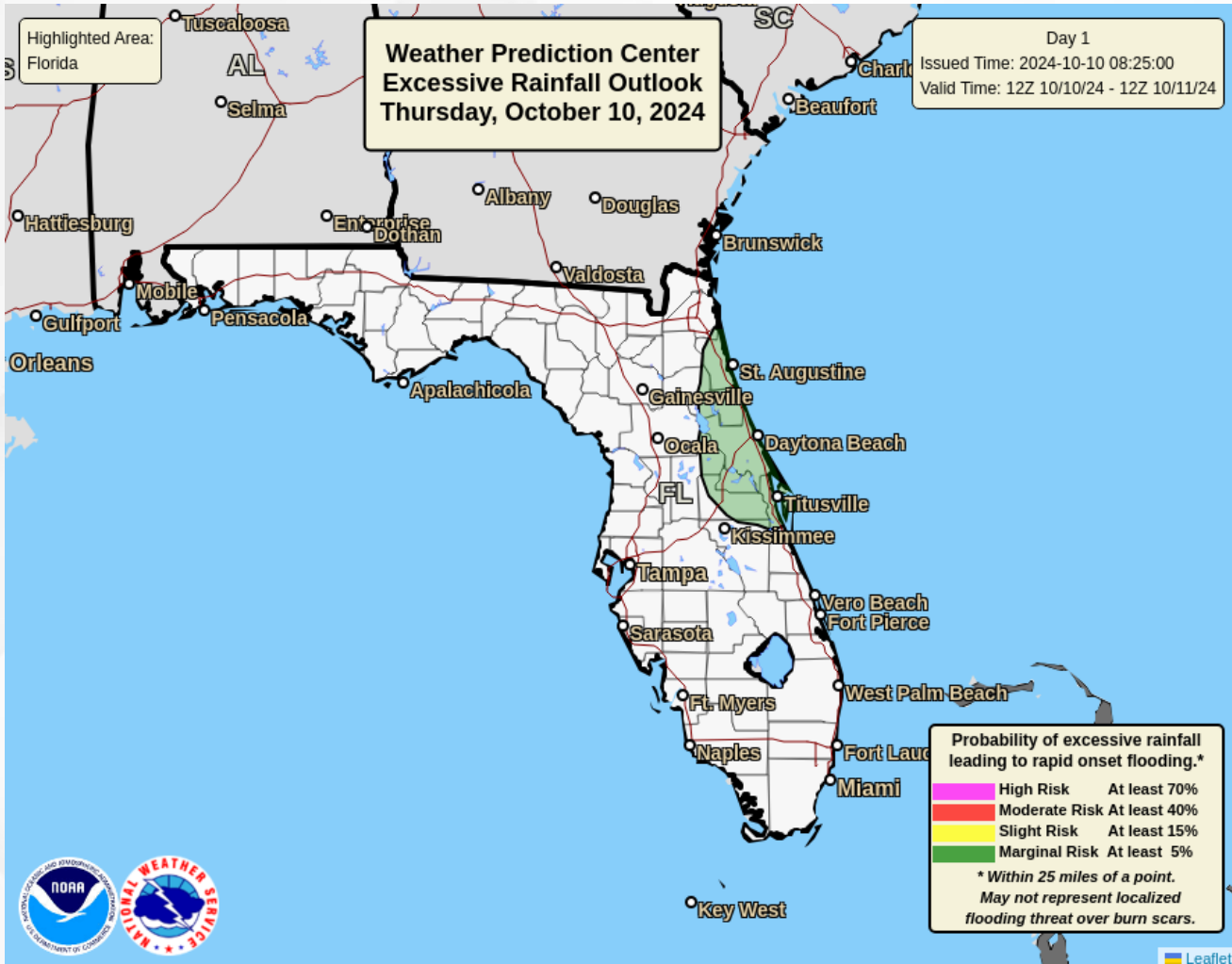
**7-Day Forecast Rainfall Totals –
Through Tuesday Night (10/15)**

- Over the last 24-hours, widespread heavy rainfall totals were observed across West-Central Florida and eastward along the I-4 corridor from hurricane Milton.
- Drier air circulating along the southern side of the system as it moves across the Peninsula will keep heavy rainfall along the northern side of the system, allowing for widespread rainfall to extend into Northeast Florida.
- Additional widespread rainfall totals near 2-4" with **locally higher totals up to 4-6"** are possible across portions of the Northeastern Peninsula, mainly along the I-4 corridor.



Flash Flood Outlooks – Today

From the Weather Prediction Center (WPC)



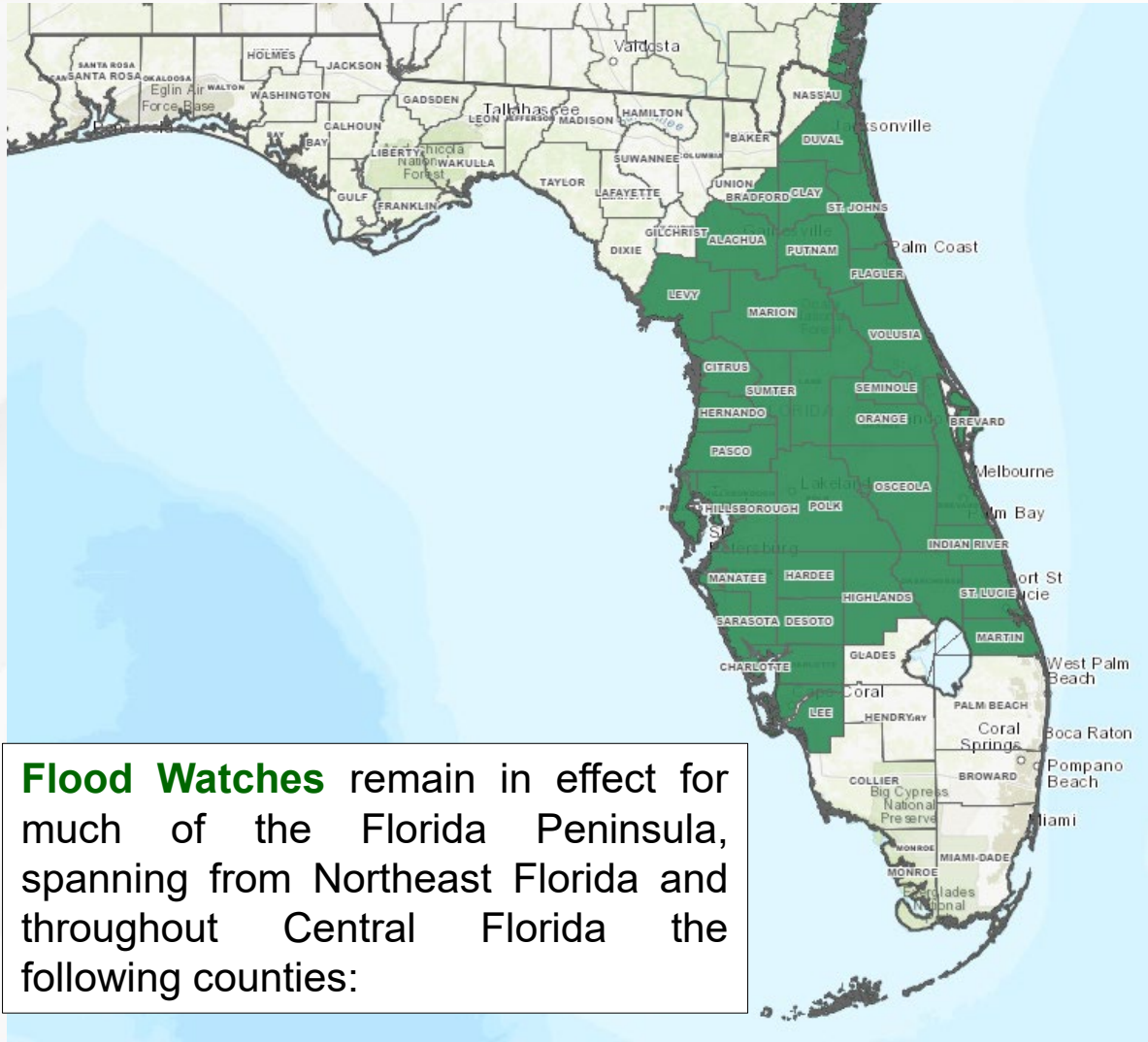
Heavy rainfall across the central and northern Peninsula through this morning continues to bring the risk of considerable flash and urban flooding along with moderate to major riverine flooding, especially in areas where coastal and inland flooding combine to increase the overall flood threat. The Weather Prediction Center (WPC) is outlooking a **Marginal Risk (level 1 of 4) for Flash Flooding** across portions of Northeast Florida south to the I-4 corridor today. Heavy rainfall rates will also be a concern over already saturated and vulnerable soils; ponding water and instances of flooding will be possible, especially throughout the urban and poor drainage/low-lying areas in the Florida Peninsula.





Flood Watches

From the National Weather Service (NWS)



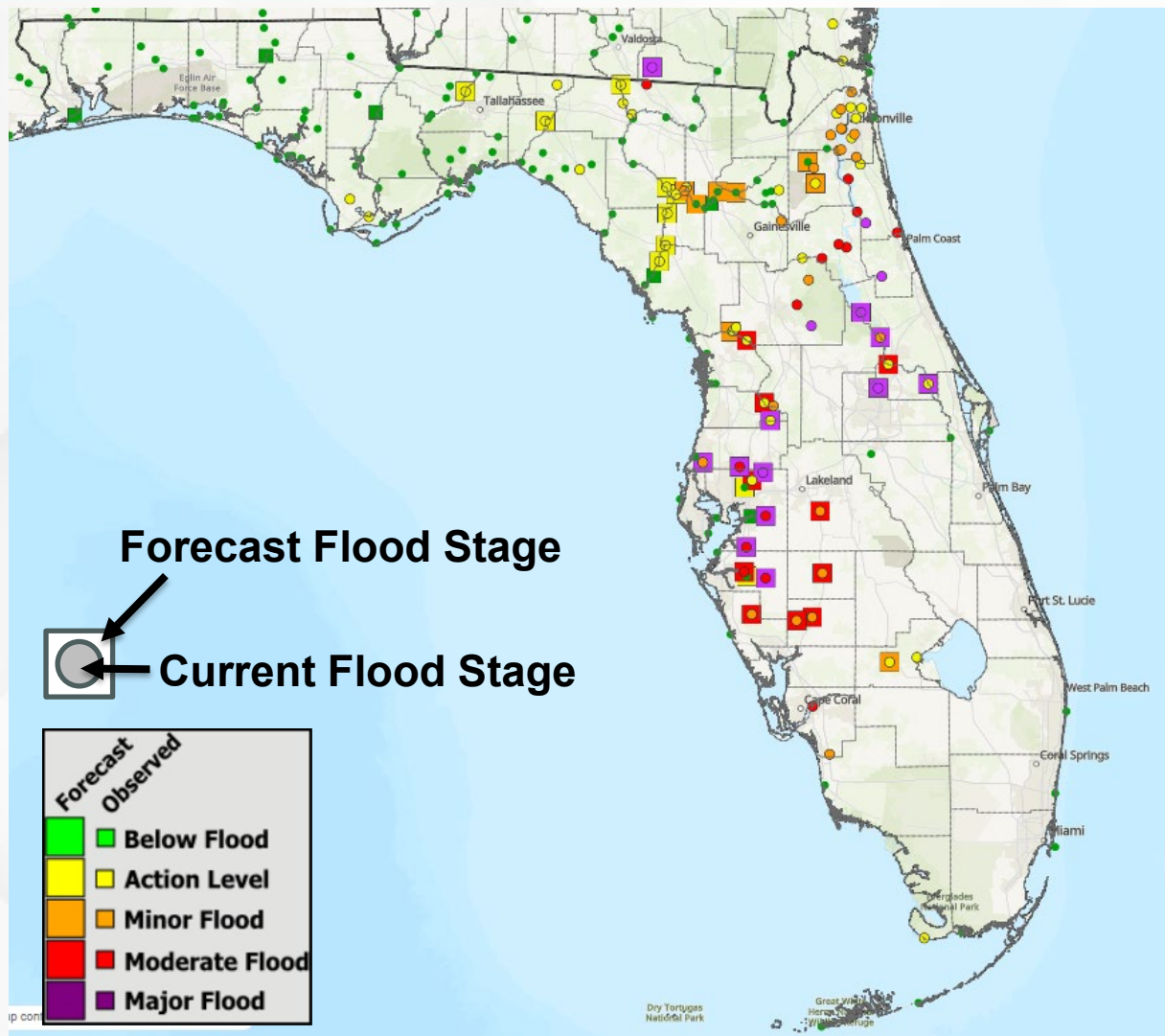
Flood Watches remain in effect for much of the Florida Peninsula, spanning from Northeast Florida and throughout Central Florida the following counties:

| | | | |
|----------------|--------------|----------|--------------|
| Coastal Nassau | Duval | Clay | Bradford |
| St. Johns | Putnam | Alachua | Levy |
| Marion | Flagler | Volusia | Lake |
| Sumter | Citrus | Hernando | Pasco |
| Pinellas | Hillsborough | Polk | Seminole |
| Orange | Brevard | Osceola | Indian River |
| St. Lucie | Okeechobee | Martin | Highlands |
| Hardee | Manatee | Sarasota | DeSoto |
| Charlotte | Lee | | |



Current & Forecast River Conditions

From the National Weather Service



River Flood Warnings have been issued for many West-Central and Northeast Florida rivers as heavy rainfall from Milton's causes water levels to rise. Water levels across numerous rivers and waterways have already risen into **minor to moderate flood stage** with several rivers within **major flood stage**. Widespread **moderate to major flooding** is forecast over the next day or so across West-Central and Northeast Florida waterways, as well as portions of the St. Johns and inland quicker-response river/stream systems across Central Florida within the next day or so.

Major Flooding is occurring or forecast for the following rivers: Withlacoochee River ([US-301 Trilby](#)), Anclote River ([Elfers](#)), Myakka River ([Myakka River State Park](#)), Manatee River ([Myakka Head](#)), Little Manatee River ([Wimauma](#)), Alafia River ([Lithia Pinecrest](#) & [Riverview](#)), Hillsborough River ([Zephyrhills](#)), Cypress Creek ([Worthington Gardens](#)), St. Johns River ([Astor](#), [Deland](#), & [Lake Harney](#)), Little Wekiva ([Altamonte Springs](#)).

Moderate Flooding is occurring or forecast for the following rivers: Manatee River ([Rye Bridge](#)), St. Johns River ([Sanford](#)), Withlacoochee River ([Holder](#), [Croom](#)), Hillsborough River ([Morris Bridge](#)), Peace River ([Arcadia](#), [SR-60 Bartow](#), & [Zolfo Springs](#)), Horse Creek ([Arcadia](#)).

Minor Flood Stage is forecast for the following rivers: [North Fork](#) & [South Fork](#) of Black Creek, Fisheating Creek ([Palmdale](#)), Withlacoochee River ([US-41 Dunnellon](#)), Santa Fe River ([Three Rivers Estates](#), [Fort White](#), [O'leno State Park](#), & [Worthington Springs](#))

Heavy rainfall across the central and northern Peninsula through this morning continues to bring the risk of considerable flash and urban flooding along with moderate to major riverine flooding, especially in areas where coastal and inland flooding combine to increase the overall flood threat.

For more details, please visit the [River Forecast Center](#).



River Flood Warnings

From the National Weather Service

| River Gauge | County(ies) Affected | Current Level | Crest Level | Record Level | Status | Crest Day | Warning Expires |
|---|-------------------------------|--------------------|--------------------|--------------|---------|-----------|----------------------|
| Alafia River at Lithia Pinecrest Road at Lithia | Hillsborough | Moderate: 16.23 ft | Major: 20.10 ft | 28.50 ft | Rising | 11-Oct | Until Further Notice |
| Anclote River near Elfers at Little Road | Pasco | Minor: 21.48 ft | Major: 26.80 ft | 27.70 ft | Rising | 11-Oct | Until Further Notice |
| Cypress Creek at SR-54 | Pasco | Minor: 10.93 ft | Major: 15.00 ft | 13.80 ft | Rising | 12-Oct | Until Further Notice |
| Fisheating Creek at Palmdale | Glades | Action: 6.34 ft | Minor: 7.50 ft | 12.40 ft | Rising | 12-Oct | Until Further Notice |
| Hillsborough River near Zephyrhills | Hillsborough | Major: 14.20 ft | Major: 16.30 ft | 15.30 ft | Rising | 11-Oct | Until Further Notice |
| Hillsborough River at Morris Bridge | Hillsborough | Action: 30.51 ft | Moderate: 35.20 ft | 34.70 ft | Rising | 12-Oct | Until Further Notice |
| Horse Creek near Arcadia at SR-72 | DeSoto | Minor: 13.59 ft | Moderate: 15.00 ft | 21.20 ft | Rising | 12-Oct | Until Further Notice |
| Little Manatee River near Wimauma at US-301 | Hillsborough | Moderate: 15.15 ft | Major: 18.50 ft | 20.10 ft | Rising | 11-Oct | Until Further Notice |
| Manatee River near Myakka Head at SR-64 | Manatee | Moderate: 15.06 ft | Major: 17.00 ft | 20.90 ft | Rising | 10-Oct | Until Further Notice |
| Manatee River at Rye Bridge | Manatee | Moderate: 13.64 ft | Major: 15.94 ft | 20.00 ft | Falling | Crested | 0845 EDT 11-Oct |
| Myakka River at Myakka River State Park | Sarasota | Minor: 7.77 ft | Moderate: 10.40 ft | 12.80 ft | Rising | 12-Oct | Until Further Notice |
| North Fork Black Creek near Middleburg | Clay | Below: 6.88 ft | Minor: 16.20 ft | 27.90 ft | Rising | 11-Oct | 0930 EDT 11-Oct |
| South Fork Black Creek near Penney Farms | Clay | Below: 10.81 ft | Minor: 15.20 ft | 29.40 ft | Rising | 11-Oct | 1530 EDT 12-Oct |
| Peace River at SR-60 Bartow | Polk | Minor: 8.09 ft | Moderate: 9.70 ft | 11.10 ft | Rising | 13-Oct | Until Further Notice |
| Peace River at Zolfo Springs | Hardee | Minor: 17.10 ft | Moderate: 21.70 ft | 27.20 ft | Rising | 11-Oct | Until Further Notice |
| Peace River at SR-70 Arcadia | DeSoto | Minor: 12.47 ft | Moderate: 15.30 ft | 23.70 ft | Rising | 14-Oct | Until Further Notice |
| Santa Fe River at Three Rivers Estates | Columbia, Gilchrist, Suwannee | Minor: 18.63 ft | Minor: 19.60 ft | 33.40 ft | Rising | 15-Oct | Until Further Notice |
| Santa Fe River at O'leno State Park | Alachua, Columbia | Below: 39.49 ft | Minor: 44.50 ft | 57.10 ft | Rising | 13-Oct | Until Further Notice |
| Santa Fe at Worthington Springs | Alachua, Bradford, Union | Below: 55.49 ft | Minor: 59.30 ft | 71.20 ft | Rising | 12-Oct | 0200 EDT 14-Oct |
| St. Johns River at Astor | Volusia, Lake | Major: 4.34 ft | Major: 4.50 ft | 4.70 ft | Rising | 10-Oct | Until Further Notice |
| St. Johns River near Deland | Lake | Minor: 4.56 | Major: 5.60 ft | 6.30 ft | Rising | TBD | Until Further Notice |
| St. Johns River near Sanford | Seminole | Action: 4.96 ft | Moderate: 7.30 ft | 9.00 ft | Rising | TBD | Until Further Notice |
| St. Johns River above Lake Harney | Seminole, Volusia | Action: 7.03 ft | Major: 10.50 ft | 12.70 ft | Rising | TBD | No Warning Issued |
| Wekiva River near Altamonte Springs 2N | Seminole | Major: 29.99 ft | Major: 29.99 ft | 31.1 ft | Rising | 10-Oct | Until Further Notice |
| Withlacoochee River near Holder | Cirtus | Action: 7.43 ft | Moderate: 10.40 ft | 13.30 ft | Rising | 13-Oct | Until Further Notice |
| Withlacoochee River at Croom | Pasco, Sumter | Action: 8.26 ft | Moderate: 11.70 ft | 15.20 ft | Rising | TBD | Until Further Notice |
| Withlacoochee River at US-301 Trilby | Hernando, Pasco | Action: 11.27 ft | Major: 17.40 ft | 20.40 ft | Rising | TBD | Until Further Notice |



Summary

FOUO – For Government Official Use Only

Hurricane Milton:

- Around 8:30 PM EDT last night (10/9), Milton made landfall as a Category 3 hurricane near Siesta Key in Sarasota County.
- Milton moved quickly across central Florida overnight, producing significant flooding and damaging winds near its path.
- With the 5:00 AM advisory, Hurricane Milton is located about 10 miles northeast of Cape Canaveral, Florida and moving northeastward at 18 mph.
- This general motion is expected to continue today, followed by a turn toward the east tonight.
- On the forecast track, the center of Milton will continue to move away from Florida and to the north of the Bahamas today.
- Maximum sustained winds are near 85 mph with higher gusts, making Milton a Category 1 hurricane.
- Gradual weakening is expected, but Milton is forecast to become a powerful extratropical low tonight.

- **Hurricane Warning:** St. Johns, Putnam, Flagler, Eastern Marion, Volusia, Lake, Sumter, Orange, Seminole, Brevard, Polk, Osceola, Highlands, Okeechobee, Indian River, St. Lucie
- **Tropical Storm Warning:** Nassau, Duval, Clay, Glades, Martin, Palm Beach, Lake Okeechobee
- **Storm Surge Warning:** Manatee/Sarasota County Line to Lee/Collier County Line, including Charlotte Harbor; Brevard/Indian River County Line northward to the Florida State Line, including the St. Johns River.
 - **Storm Surge Values (Peak Forecast):**
 - Florida State Line to Sebastian Inlet (Brevard/Indian River County Line): **3-5'**
 - St. Johns River: **2-4'**
 - Middle of Longboat Key (Manatee/Sarasota County Line) to Bonita Beach (Collier/Lee County Line): **2-4'**



Summary

FOUO – For Government Official Use Only

Florida Outlook:

- Destructive and life-threatening winds were observed across portions of West-Central Florida overnight near and after Milton made landfall.
 - A sustained wind of 92 mph and a gust of 107 mph was reported at a UF Sentinel/WeatherFlow station in Venice.
 - Damaging hurricane-force winds, especially in gusts, will continue for a few more hours in east-central and northeast Florida.
- Even after tropical-storm force winds have dissipated, breezy winds will linger across the state.
 - **Wind Advisories** have been issued across the Southeastern Panhandle, Big Bend, Suwannee Valley, and coastal portions of South Florida for winds near 10-30 mph and gusts up to 45 mph through this evening.
- Water levels will remain elevated into this morning along portions of the Sun Coast following last night storm surge. There is a danger of life-threatening storm surge along the coast from east-central Florida northward to the Florida state line.
- Over the last 24-hours, **heavy rainfall totals upwards of 10-15"** has been observed across much of the Tampa Bay Area, Nature Coast, and spreading eastward along and north of the I-4 corridor towards Sanford from Hurricane Milton.
 - **Isolated higher pockets up to 18"** are speckled throughout Pinellas and Coastal Hillsborough Counties.
 - 5-10" of rainfall has been observed further northward towards Gainesville, along eastern portions of the I-4 corridor, and south of the western I-4 corridor towards Sarasota.
 - 2-5" of rainfall expands further northward towards the I-4 corridor and southward towards Lake Okeechobee and into Southwest Florida with locally higher totals near 5-7".
- Additional widespread rainfall totals near 2-4" with **locally higher totals up to 4-6"** are possible across portions of the Northeastern Peninsula today, mainly along the I-4 corridor.
- Heavy rainfall across the central and northern Peninsula through this morning continues to bring the risk of considerable flash and urban flooding along with moderate to major riverine flooding, especially in areas where coastal and inland flooding combine to increase the overall flood threat.
 - The Weather Prediction Center (WPC) is outlooking a **Marginal Risk (level 1 of 4) for Flash Flooding** across portions of Northeast Florida south to the I-4 corridor today.
 - Heavy rainfall rates will also be a concern over already saturated and vulnerable soils; ponding water and instances of flooding will be possible, especially throughout the urban and poor drainage/low-lying areas in the Florida Peninsula.
 - **Flood Watches** extend from Northeast Florida through Central Florida and into Southwest Florida.
- **River Flood Warnings** have been issued for many West-Central and Northeast Florida rivers as heavy rainfall from Milton's causes water levels to rise.
 - Water levels across numerous rivers and waterways have already risen into **minor to moderate flood stage** with several rivers within **major flood stage**.
 - **Widespread moderate to major flooding** is forecast over the next day or so across West-Central and Northeast Florida waterways, as well as portions of the St. Johns and inland quicker-response river/stream systems across Central Florida within the next day or so.

The next briefing packet will be issued on Thursday morning. For the latest information, please visit the [National Hurricane Center website](#).



Tropical Update

FOUO – For Government Official Use Only



Created by:

Melissa James, Assistant State Meteorologist

Melissa.James@em.myflorida.com

State Meteorological Support Unit

Florida Division of Emergency Management

Users wishing to subscribe (approval pending) to this distribution list, register at:

https://public.govdelivery.com/accounts/FLDEM/subscriber/new?topic_id=SERT_Met_Tropics.

Other reports available for subscription are available at:

<https://public.govdelivery.com/accounts/FLDEM/subscriber/new?preferences=true>