



Tropical Update



11:00 AM EDT

Thursday, October 10, 2024

Hurricane Milton

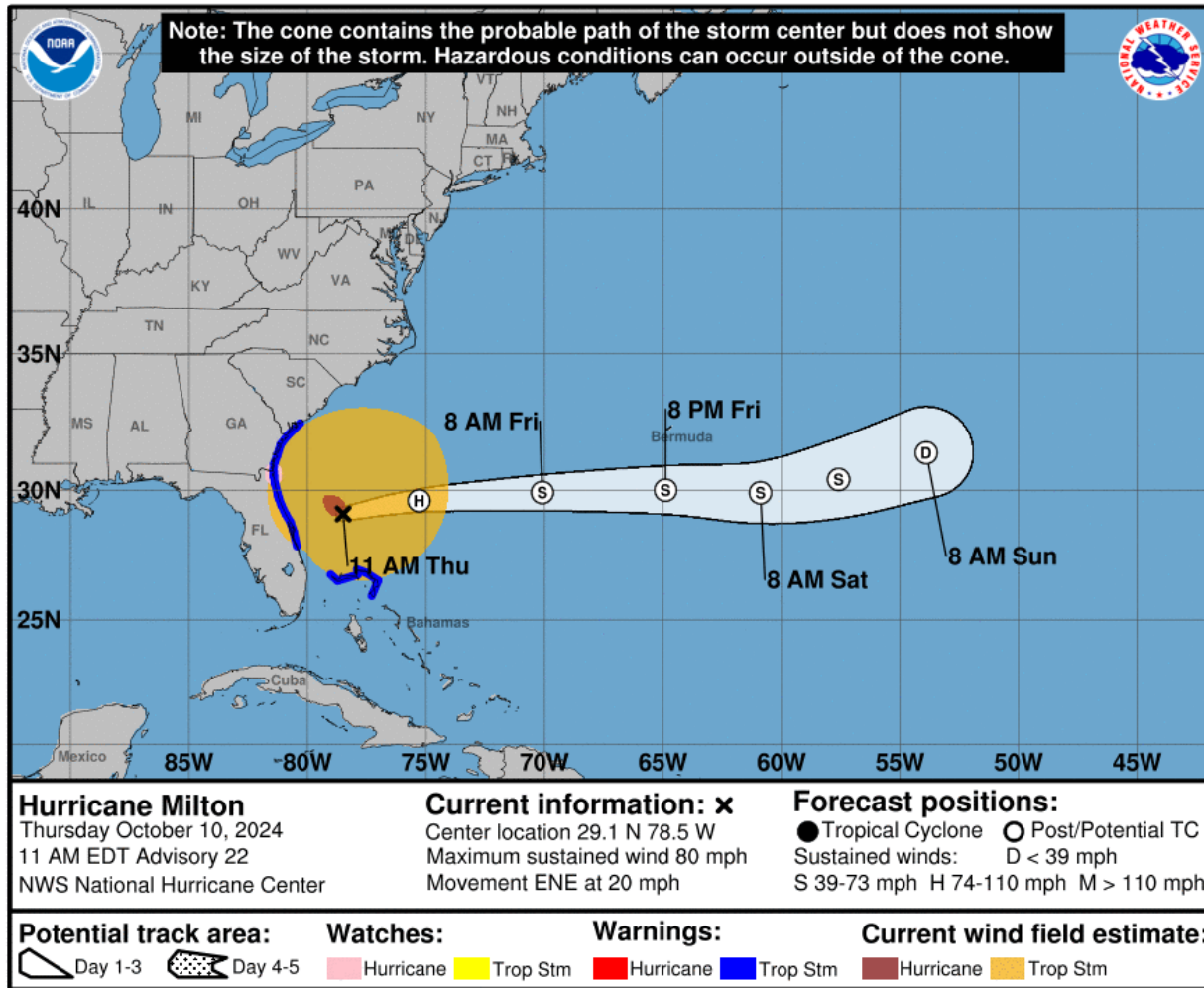
Milton Moving Away from Florida East Coast; Tropical Storm Conditions and Storm Surge Continue Along Portions of Southeast U.S. Coast

This update is intended for government and emergency response officials, and is provided for informational and situational awareness purposes only. Forecast conditions are subject to change based on a variety of environmental factors. For additional information, or for any life safety concerns with an active weather event please contact your County Emergency Management or Public Safety Office, local National Weather Service forecast office, or visit the National Hurricane Center website at www.hurricanes.gov.



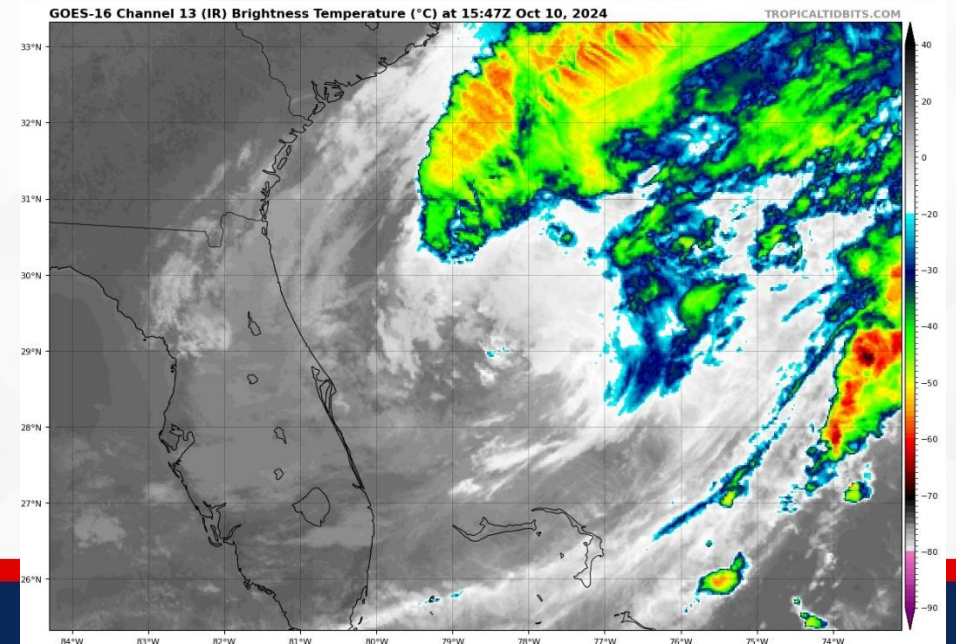
Hurricane Milton

From the National Hurricane Center (NHC)



- **Location:** 135 miles ENE of Cape Canaveral, FL
- **Maximum Sustained Winds:** 80 mph, Category 1
- **Current Movement:** ENE at 20 mph

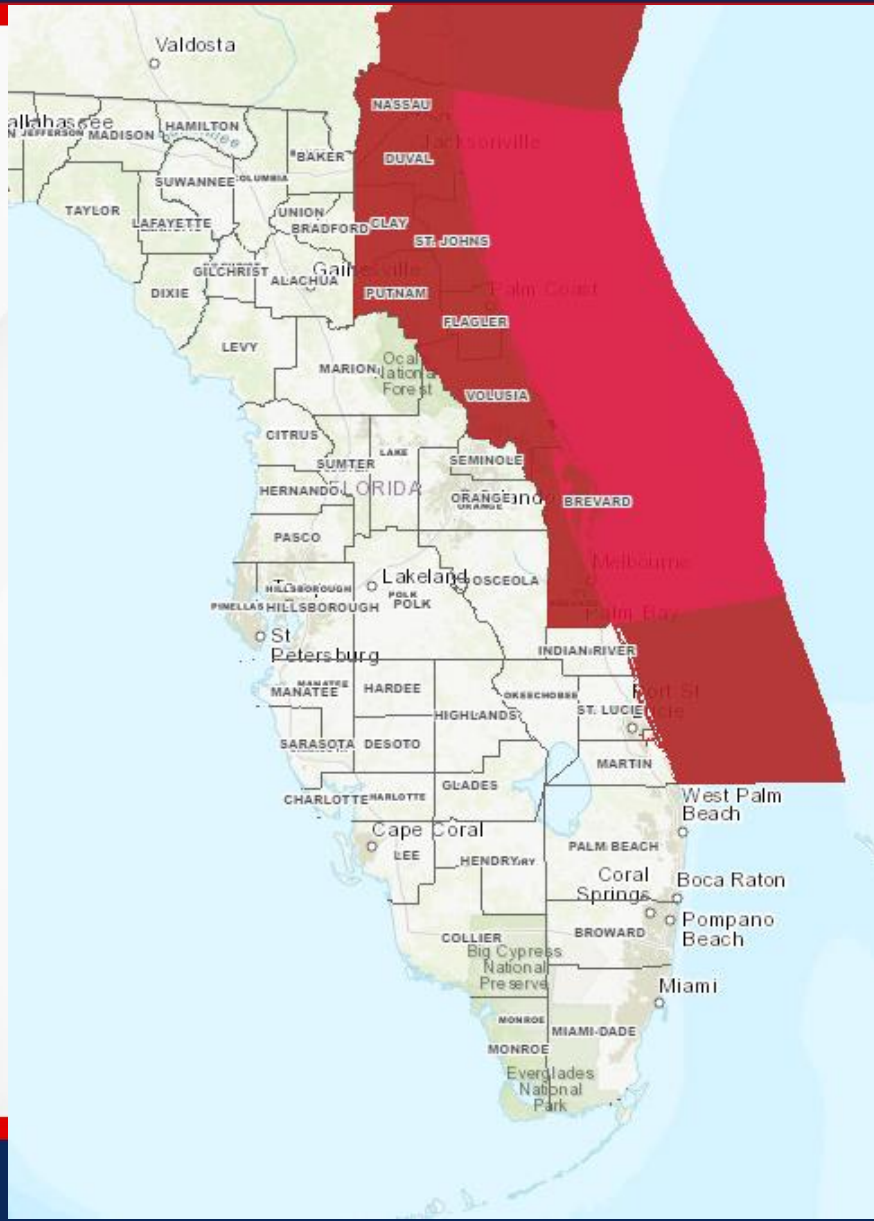
A turn toward the east is expected later today, with that motion forecast to continue over the western Atlantic for the next few days. On the forecast track, the center of Milton will continue to move away from the East Coast of Florida and pass north of the northwestern Bahamas today. Milton is forecast to become a powerful post-tropical storm this afternoon or evening, with gradual weakening expected during the next several days.





Current Tropical Wind Watches/Warnings

As of 11:00 AM EDT Thursday



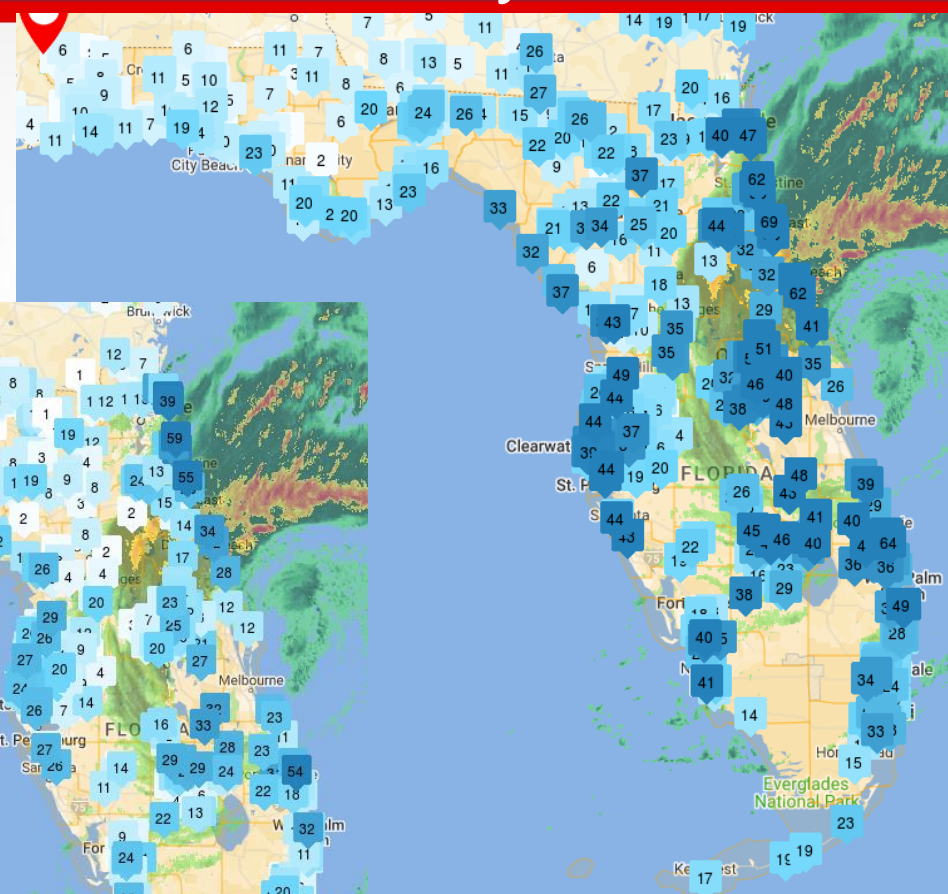
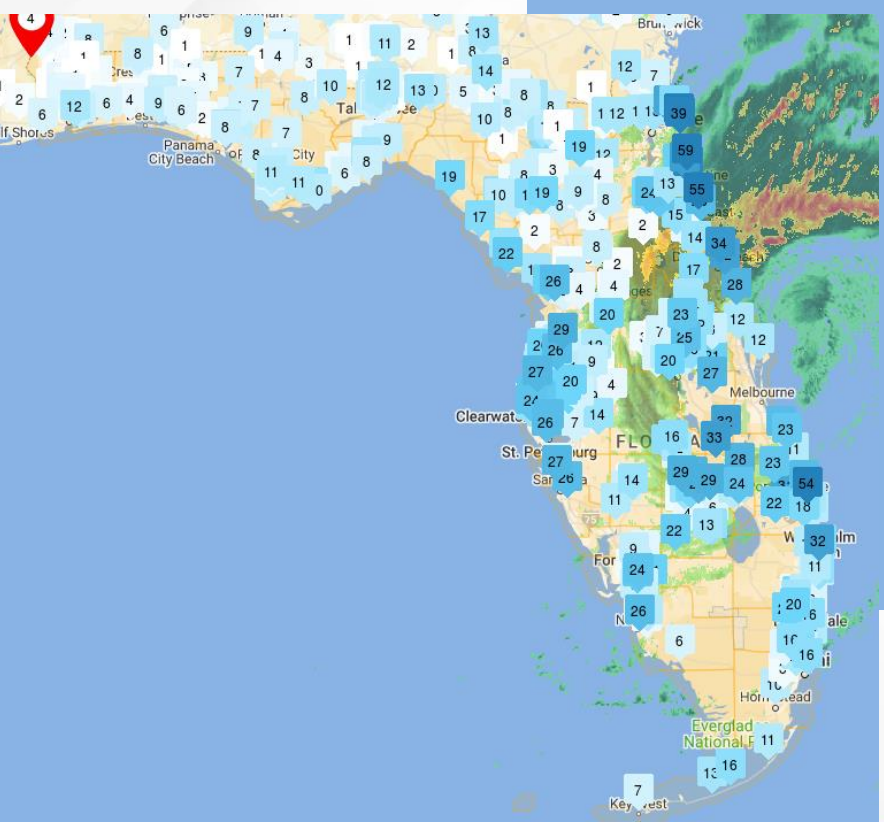
Tropical Storm Warning: Nassau, Duval, Clay, St. Johns, Putnam, Flagler, Volusia, Brevard



WeatherSTEM Wind Observations

6:00 AM EDT Thursday

Sustained Wind Speeds



Maximum Wind Gusts

Conditions have begun to improve across western and southern portions of the Peninsula this morning. Damaging hurricane-force winds, especially in gusts, will continue for a few more hours in east-central and northeast Florida.

A sustained wind of 75 mph and a gust to 83 mph was recently reported at a Weatherstem station in Marineland.

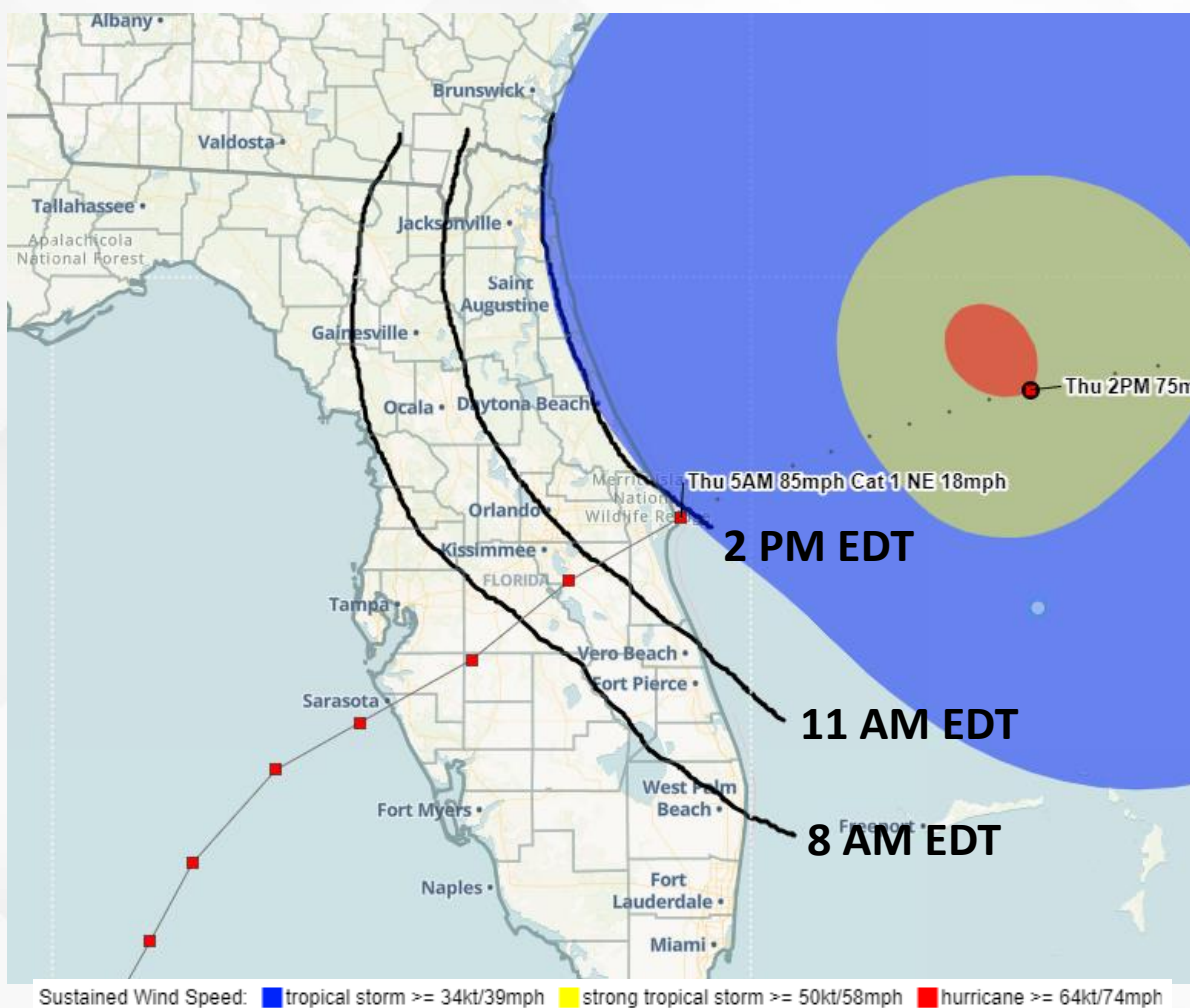
A sustained wind of 61 mph and a gust to 76 mph was recently reported at a Weatherstem station on South Hutchinson Island.

A sustained wind of 60 mph and a gust of 87 mph was recently reported at Daytona Beach International Airport.



Wind Departure Timing - Today

From the National Hurricane Center (NHC)



Conditions will gradually begin to improve from southwest to northeast across the Peninsula through the morning and afternoon hours today.

Sustained tropical-storm force winds have begun to dissipate across Southwest Florida and the southern Tampa Bay Area. Tropical storm-force winds will linger along central and northern portions of the Tampa Bay Area over the next couple of hours before dissipating, leaving behind breezy conditions.

Tropical storm-force winds will begin to exit the Nature Coast and Suwannee River Valley through the early to mid-morning hours but linger across more interior portions of the northern Peninsula until closer to mid-day.

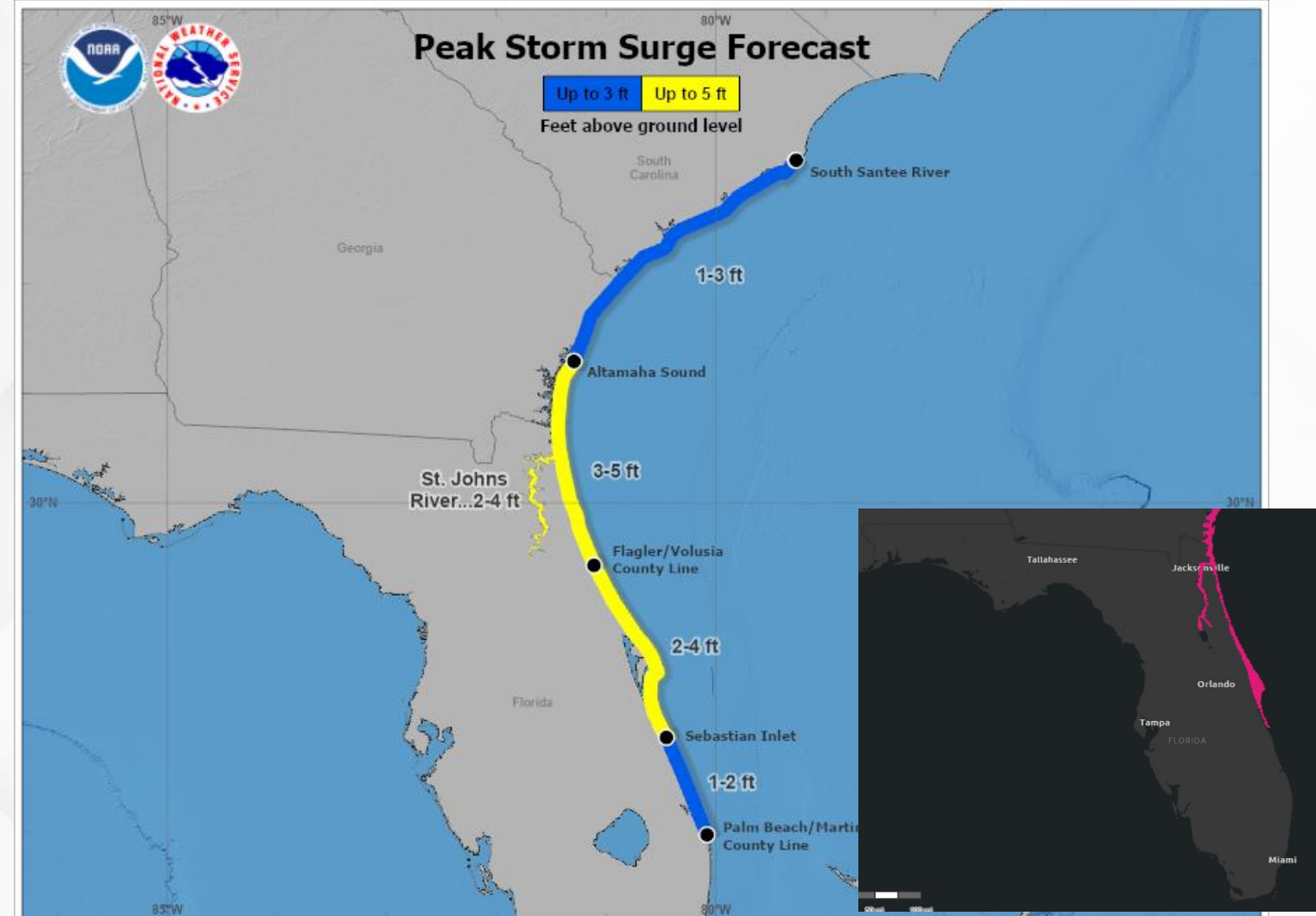
Northeast Florida and portions of East-Central Florida will likely see tropical-storm force winds persist through the morning hours before gradually tapering off through the early afternoon hours.

Even after tropical-storm force winds have dissipated, breezy winds will linger across the state. **Wind Advisories** have been issued across the Southeastern Panhandle, Big Bend, Suwannee Valley, and coastal portions of South Florida.



Current Storm Surge Watches & Warnings

As of 8:00 AM EDT Thursday



Water levels will remain elevated into this morning along the Northeast and East-Central Florida coast as Milton continues to pull away from the Florida coast and bringing onshore winds.

Storm Surge Warnings

- Sebastian Inlet (Brevard/Indian River Line) to Florida-Georgia line, including St. Johns River (Melbourne, Volusia, Flagler, St. Johns, Duval, Nassau, Clay, Putnam)

Hurricane Milton
Thursday October 10, 2024
11 AM EDT Advisory 22
NWS National Hurricane Center

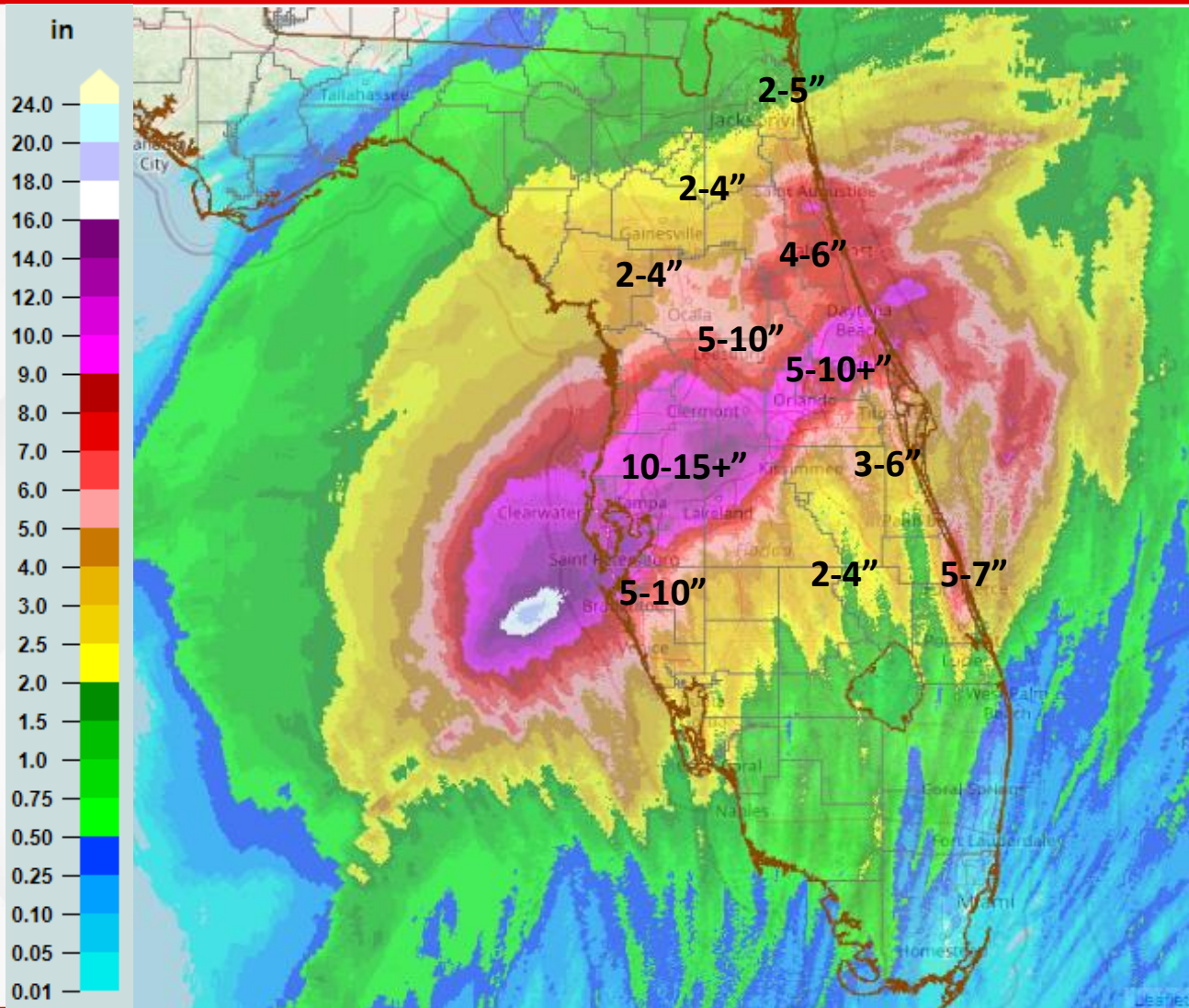
User Notes: Water levels along the immediate coast could reach the following heights above ground level within the indicated areas. Elevated water levels will likely be accompanied by large and destructive waves. Colors are determined by the highest values in the associated forecast peak surge range. Values shown on this graphic are inclusive of tide.

FOUO – For Government Official Use Only



24-Hour Observed Rainfall Totals

As of 6:30 AM EDT Thursday



Over the last 24-hours, **heavy rainfall totals upwards of 10-15"** has been observed across much of the Tampa Bay Area, Nature Coast, and spreading eastward along and north of the I-4 corridor from Hurricane Milton.

Isolated higher pockets up to 18" are speckled throughout Pinellas and Coastal Hillsborough Counties.

Upwards of 5-10" of rainfall has been observed further northward towards Gainesville, along eastern portions of the I-4 corridor, and south of the western I-4 corridor towards Sarasota.

2-5" of rainfall expands further northward towards the I-4 corridor and southward towards Lake Okeechobee and into Southwest Florida with locally higher totals near 5-7".

Rainfall totals are expected to continue increasing as heavy rainfall continues with Milton as the system moves inland and crosses the Florida Peninsula.



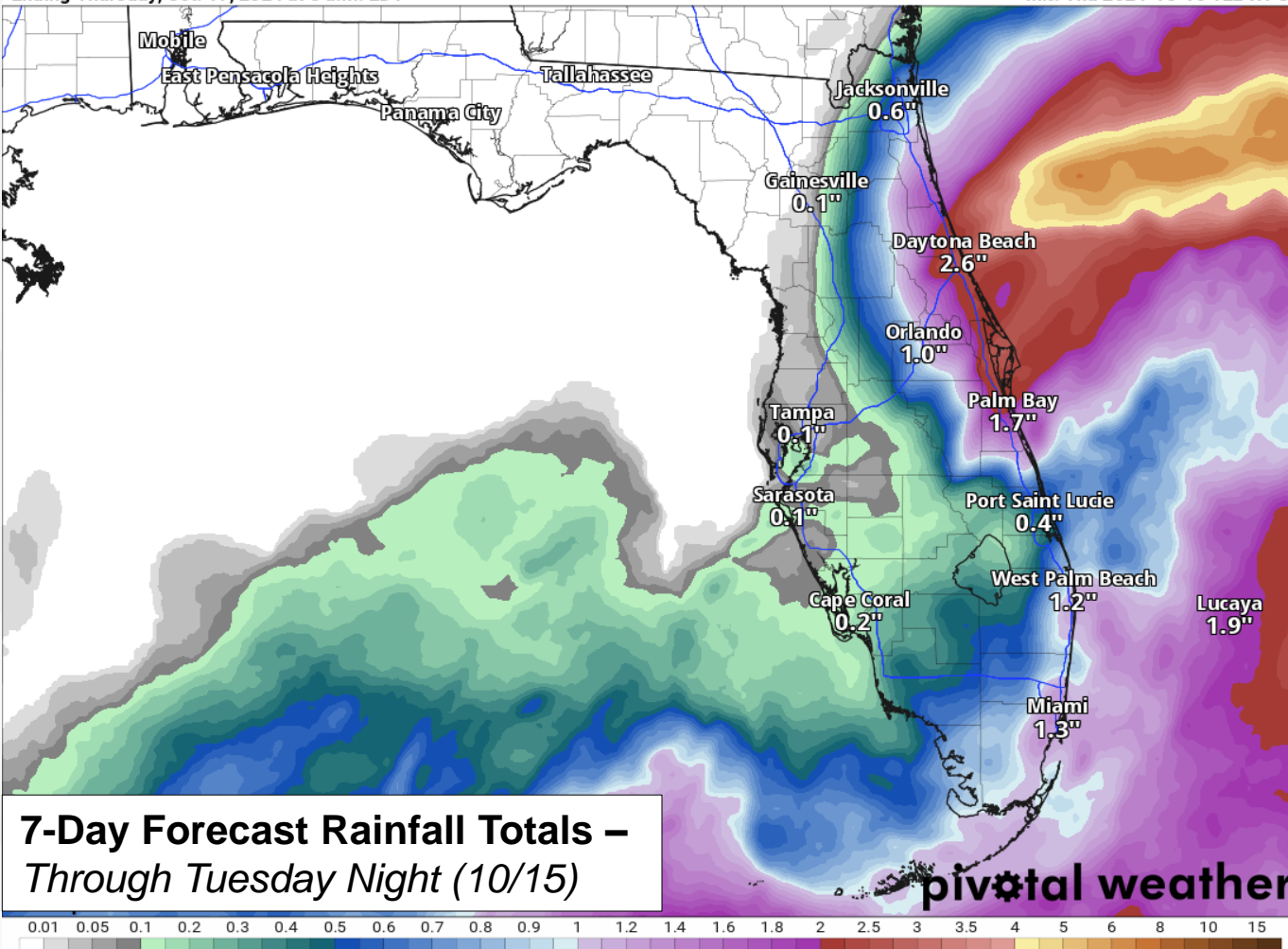
Rainfall Totals – Next 7 Days

From the Weather Prediction Center (WPC)

7-Day Precipitation (in)

Ending Thursday, Oct. 17, 2024 at 8 a.m. EDT

Init: Thu 2024-10-10 12z WPC

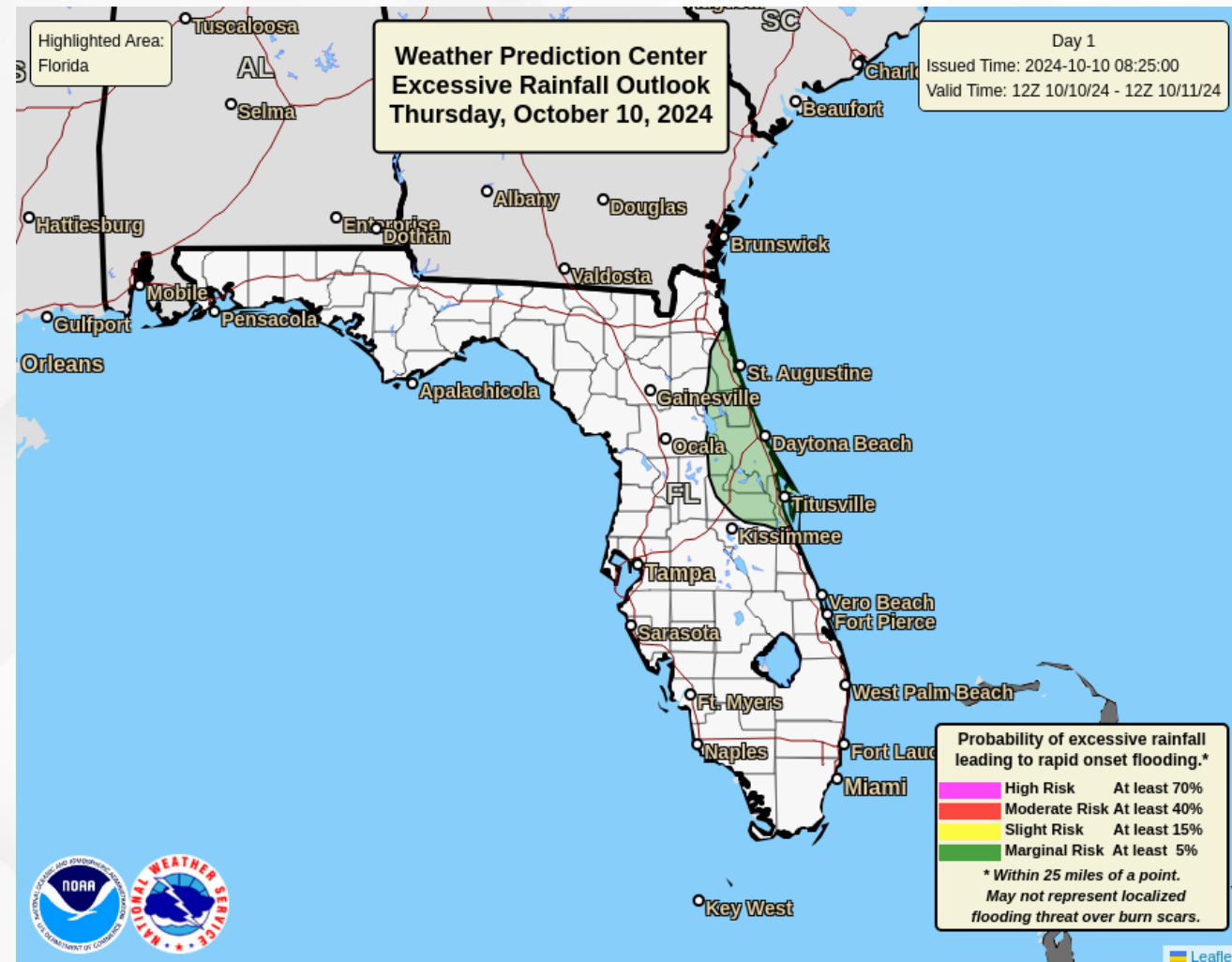


- Over the last 24-hours, widespread heavy rainfall totals were observed across West-Central Florida and eastward along the I-4 corridor from hurricane Milton.
- Drier air circulating along the southern side of the system as it moves across the Peninsula will keep heavy rainfall along the northern side of the system, allowing for widespread rainfall to extend into Northeast Florida.
- Additional widespread rainfall totals near 2-4" with **locally higher totals up to 4-6"** are possible across portions of the Northeastern Peninsula, mainly along the I-4 corridor.



Flash Flood Outlooks – Today

From the Weather Prediction Center (WPC)

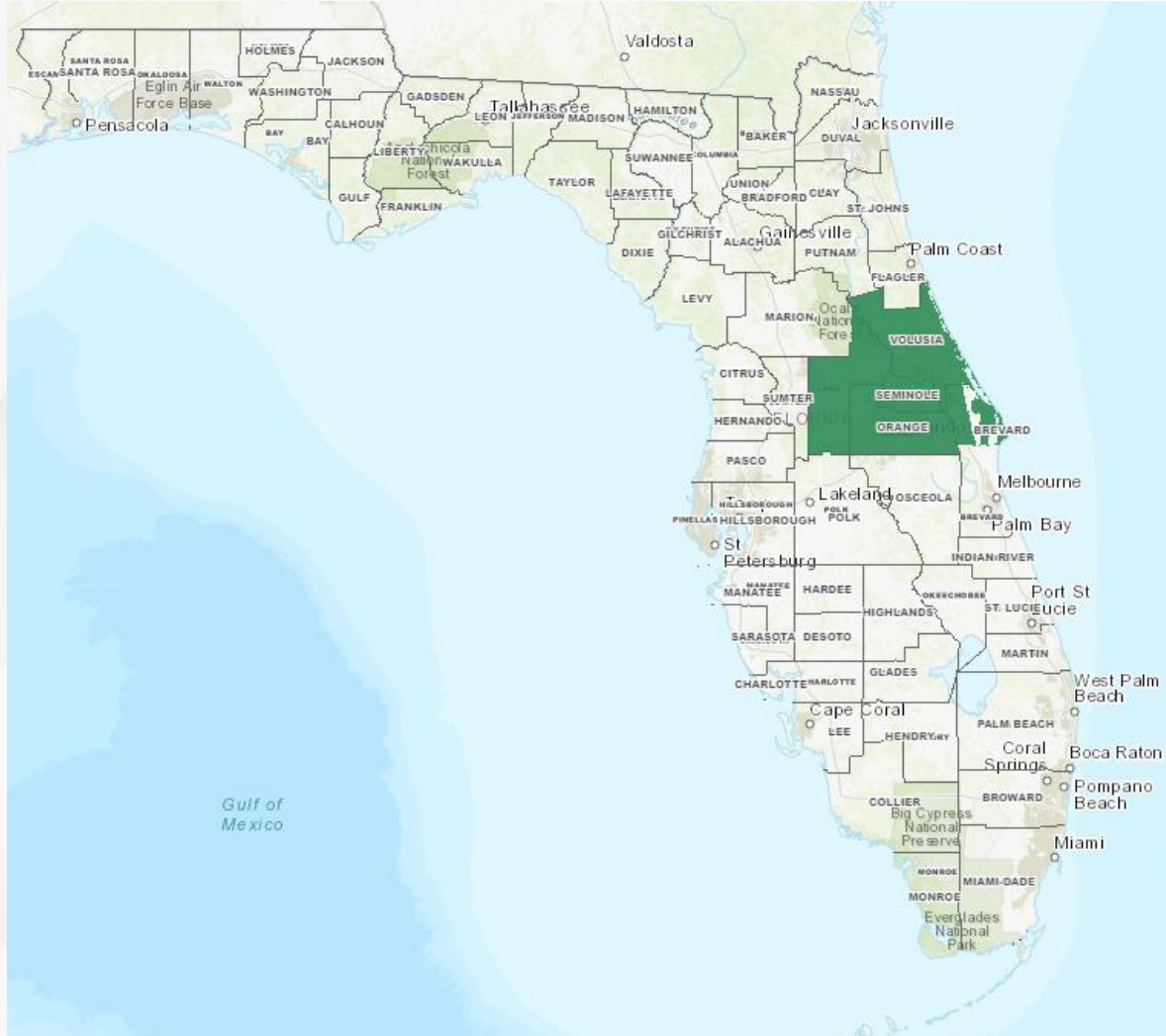


Heavy rainfall across the central and northern Peninsula through this morning continues to bring the risk of considerable flash and urban flooding along with moderate to major riverine flooding, especially in areas where coastal and inland flooding combine to increase the overall flood threat. The Weather Prediction Center (WPC) is outlooking a **Marginal Risk (level 1 of 4) for Flash Flooding** across portions of Northeast Florida south to the I-4 corridor today. Heavy rainfall rates will also be a concern over already saturated and vulnerable soils; ponding water and instances of flooding will be possible, especially throughout the urban and poor drainage/low-lying areas in the Florida Peninsula.



Flood Watches

From the National Weather Service (NWS)



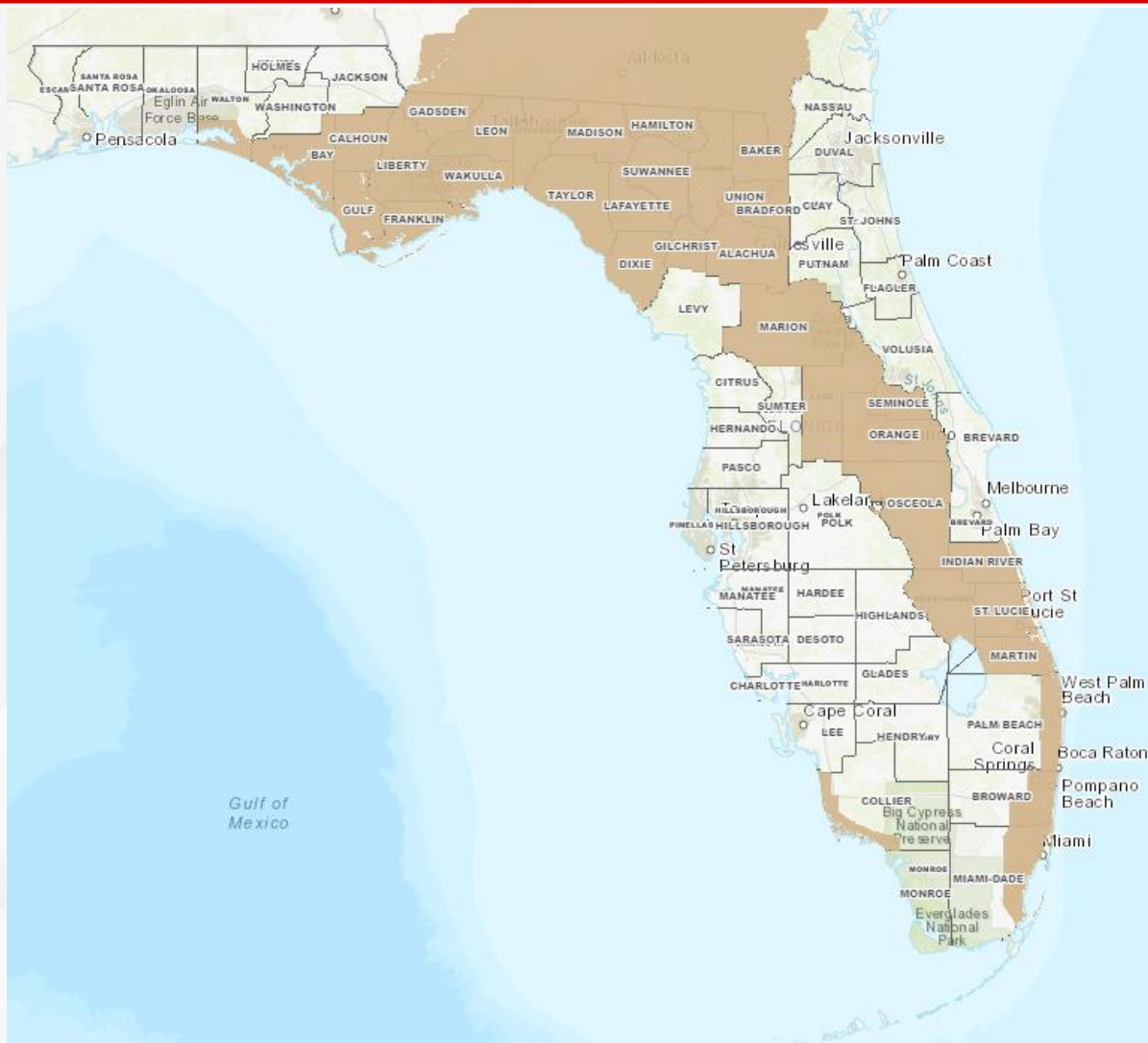
Volusia	Lake	Seminole	Orange
Brevard			

Flood Watches remain in effect for portions of interior and coastal East-Central Florida as lingering outer bands from Milton continue to bring scattered showers and embedded thunderstorms, which are capable of producing heavy downpours. Any additional rainfall over susceptible surfaces or already flooded areas may see exacerbated conditions with any additional heavy rainfall.



Wind Advisories

From the National Weather Service (NWS)

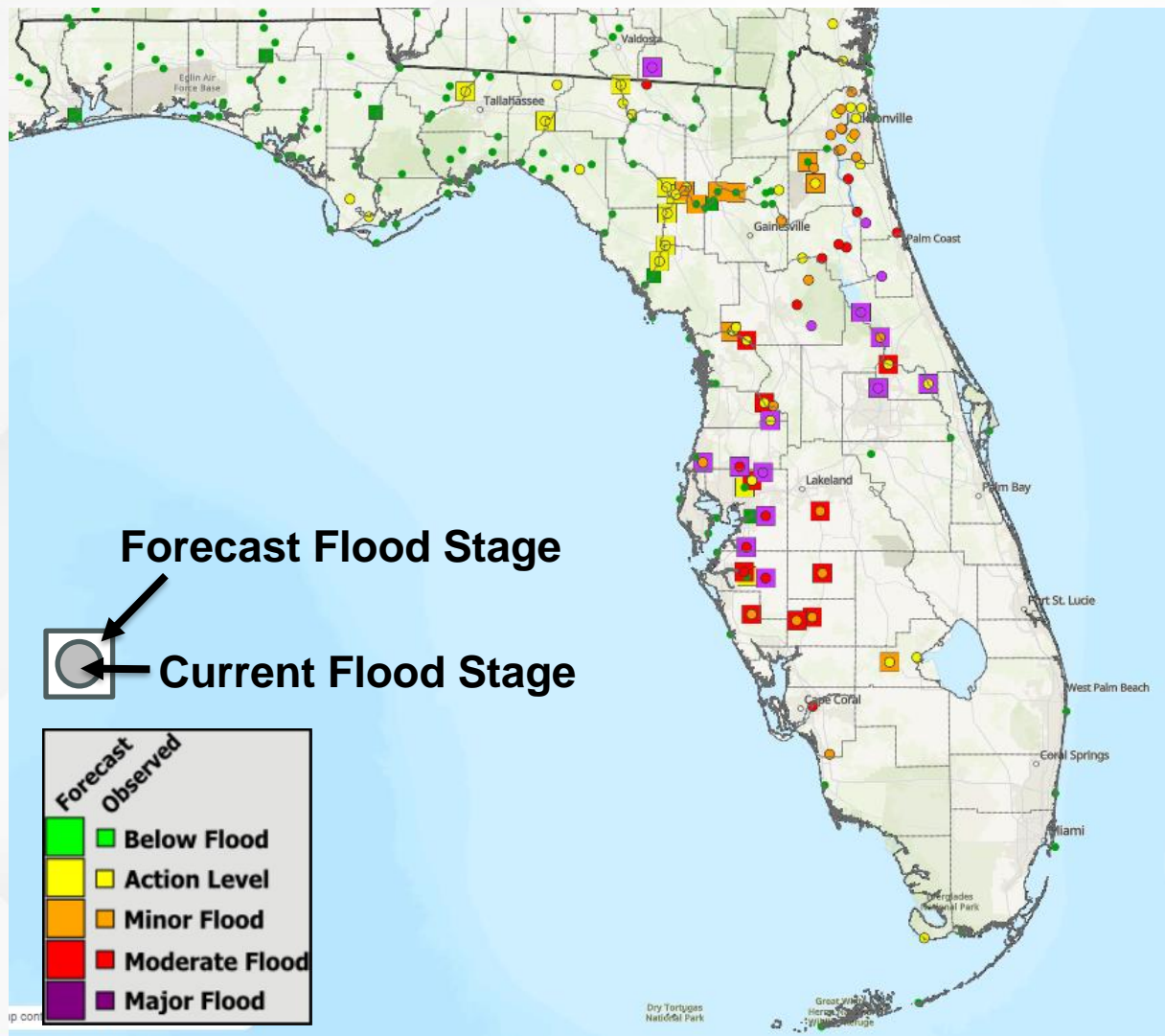


Breezy winds behind Milton will continue throughout the day expanding from the Panhandle and throughout most of the Peninsula. **Sustained winds of 10-20 mph** can be expected, with **wind gusts upwards of 30-45 mph** possible throughout the day. **Wind Advisories** will remain in effect through this evening, and additional Wind Advisories will likely be issued once tropical storm-force winds have moved out of the state.



Current & Forecast River Conditions

From the National Weather Service



River Flood Warnings have been issued for many West-Central and Northeast Florida rivers as heavy rainfall from Milton's causes water levels to rise. Water levels across numerous rivers and waterways have already risen into **minor to moderate flood stage** with several rivers within **major flood stage**. Widespread **moderate to major flooding** is forecast over the next day or so across West-Central and Northeast Florida waterways, as well as portions of the St. Johns and inland quicker-response river/stream systems across Central Florida within the next day or so.

Major Flooding is occurring or forecast for the following rivers: Withlacoochee River ([US-301 Trilby](#)), Anclote River ([Elfers](#)), Myakka River ([Myakka River State Park](#)), Manatee River ([Myakka Head](#)), Little Manatee River ([Wimauma](#)), Alafia River ([Lithia Pinecrest](#) & [Riverview](#)), Hillsborough River ([Zephyrhills](#)), Cypress Creek ([Worthington Gardens](#)), St. Johns River ([Astor](#), [Deland](#), & [Lake Harney](#)), Little Wekiva ([Altamonte Springs](#)).

Moderate Flooding is occurring or forecast for the following rivers: Manatee River ([Rye Bridge](#)), St. Johns River ([Sanford](#)), Withlacoochee River ([Holder](#), [Croom](#)), Hillsborough River ([Morris Bridge](#)), Peace River ([Arcadia](#), [SR-60 Bartow](#), & [Zolfo Springs](#)), Horse Creek ([Arcadia](#)).

Minor Flood Stage is forecast for the following rivers: [North Fork](#) & [South Fork](#) of Black Creek, Fisheating Creek ([Palmdale](#)), Withlacoochee River ([US-41 Dunnellon](#)), Santa Fe River ([Three Rivers Estates](#), [Fort White](#), [O'leno State Park](#), & [Worthington Springs](#))

Heavy rainfall across the central and northern Peninsula through this morning continues to bring the risk of considerable flash and urban flooding along with moderate to major riverine flooding, especially in areas where coastal and inland flooding combine to increase the overall flood threat.

For more details, please visit the [River Forecast Center](#).



River Flood Warnings

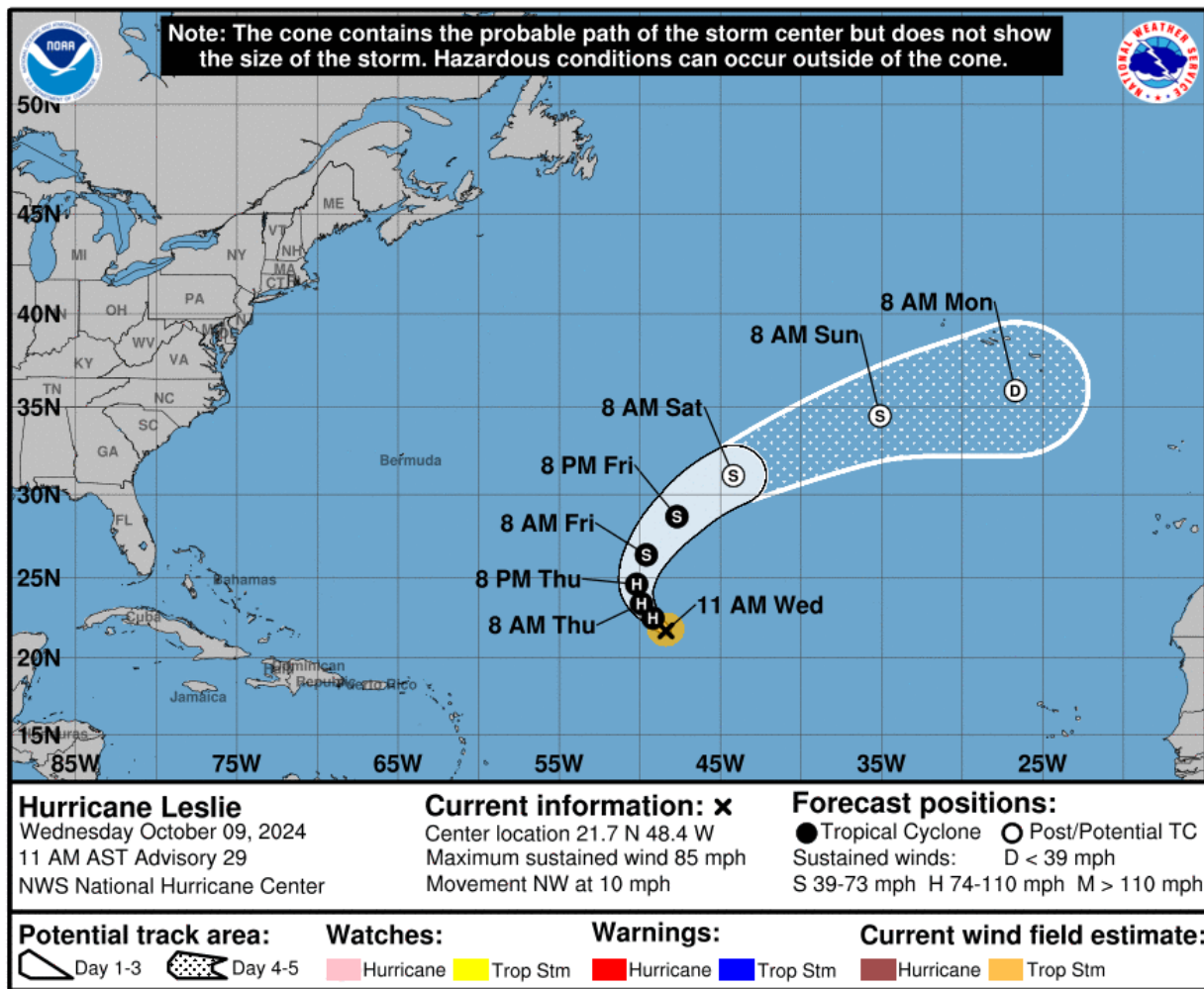
From the National Weather Service

River Gauge	County(ies) Affected	Current Level	Crest Level	Record Level	Status	Crest Day	Warning Expires
Alafia River at Lithia Pinecrest Road at Lithia	Hillsborough	Moderate: 17.31 ft	Major: 20.10 ft	28.50 ft	Rising	11-Oct	Until Further Notice
Anclote River near Elfers at Little Road	Pasco	Minor: 21.88 ft	Major: 26.80 ft	27.70 ft	Rising	11-Oct	Until Further Notice
Cypress Creek at SR-54	Pasco	Moderate: 11.24 ft	Major: 15.00 ft	13.80 ft	Rising	12-Oct	Until Further Notice
Fisheating Creek at Palmdale	Glades	Action: 6.46 ft	Minor: 7.50 ft	12.40 ft	Rising	12-Oct	Until Further Notice
Hillsborough River near Zephyrhills	Hillsborough	Major: 15.23 ft	Major: 16.30 ft	15.30 ft	Rising	11-Oct	Until Further Notice
Hillsborough River at Morris Bridge	Hillsborough	Action: 30.96 ft	Moderate: 35.20 ft	34.70 ft	Rising	12-Oct	Until Further Notice
Horse Creek near Arcadia at SR-72	DeSoto	Minor: 13.80 ft	Moderate: 15.00 ft	21.20 ft	Rising	12-Oct	Until Further Notice
Little Manatee River near Wimauma at US-301	Hillsborough	Moderate: 15.57 ft	Major: 18.50 ft	20.10 ft	Rising	11-Oct	Until Further Notice
Manatee River near Myakka Head at SR-64	Manatee	Moderate: 15.56 ft	Major: 17.00 ft	20.90 ft	Rising	10-Oct	Until Further Notice
Manatee River at Rye Bridge	Manatee	Moderate: 1370 ft	Moderate: 13.70 ft	20.00 ft	Rising	10-Oct	0845 EDT 11-Oct
Myakka River at Myakka River State Park	Sarasota	Minor: 7.83 ft	Moderate: 10.40 ft	12.80 ft	Rising	12-Oct	Until Further Notice
North Fork Black Creek near Middleburg	Clay	Below: 7.46 ft	Minor: 16.20 ft	27.90 ft	Rising	11-Oct	0930 EDT 11-Oct
South Fork Black Creek near Penney Farms	Clay	Action: 12.50 ft	Minor: 15.20 ft	29.40 ft	Rising	11-Oct	1530 EDT 12-Oct
Peace River at SR-60 Bartow	Polk	Minor: 8.16 ft	Moderate: 9.70 ft	11.10 ft	Rising	13-Oct	Until Further Notice
Peace River at Zolfo Springs	Hardee	Minor: 17.35 ft	Moderate: 21.70 ft	27.20 ft	Rising	11-Oct	Until Further Notice
Peace River at SR-70 Arcadia	DeSoto	Minor: 12.64 ft	Moderate: 15.30 ft	23.70 ft	Rising	14-Oct	Until Further Notice
Santa Fe River at Three Rivers Estates	Columbia, Gilchrist, Suwannee	Minor: 18.67 ft	Minor: 19.60 ft	33.40 ft	Rising	15-Oct	Until Further Notice
Santa Fe River near Fort White	Columbia, Gilchrist	Below: 21.53 ft	Minor: 24.10 ft	35.40 ft	Rising	15-Oct	No Warning Issued
Santa Fe River at O'leno State Park	Alachua, Columbia	Below: 39.51 ft	Minor: 44.50 ft	57.10 ft	Rising	13-Oct	Until Further Notice
Santa Fe at Worthington Springs	Alachua, Bradford, Union	Below: 55.70 ft	Minor: 59.30 ft	71.20 ft	Rising	12-Oct	0200 EDT 14-Oct
St. Johns River at Astor	Volusia, Lake	Major: 4.34 ft	Major: 4.60 ft	4.70 ft	Rising	10-Oct	Until Further Notice
St. Johns River near Deland	Lake	Moderate: 4.85 ft	Major: 5.80 ft	6.30 ft	Rising	TBD	Until Further Notice
St. Johns River near Sanford	Seminole	Action: 5.38 ft	Moderate: 7.30 ft	9.00 ft	Rising	TBD	Until Further Notice
St. Johns River above Lake Harney	Seminole, Volusia	Action: 7.34 ft	Major: 10.50 ft	12.70 ft	Rising	TBD	No Warning Issued
Wekiva River near Altamonte Springs 2N	Seminole	Major: 30.01 ft	Major: 30.08 ft	31.1 ft	Falling	Crested	Until Further Notice
Withlacoochee River at US-41 Dunnellon	Citrus, Marion	Below: 28.47 ft	Minor: 29.90 ft	33.00 ft	Rising	TBD	No Warning Issued
Withlacoochee River near Holder	Cirtus	Action: 7.59 ft	Moderate: 10.40 ft	13.30 ft	Rising	13-Oct	Until Further Notice
Withlacoochee River at Croom	Pasco, Sumter	Action: 8.33 ft	Moderate: 11.70 ft	15.20 ft	Rising	TBD	Until Further Notice
Withlacoochee River at US-301 Trilby	Hernando, Pasco	Action: 11.40 ft	Major: 17.40 ft	20.40 ft	Rising	TBD	Until Further Notice



Hurricane Leslie

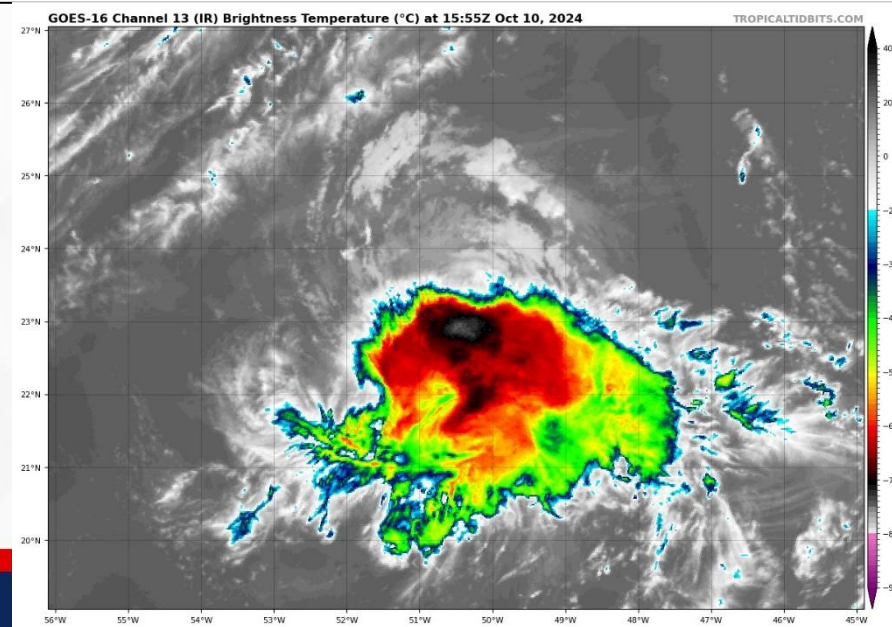
From the National Hurricane Center (NHC)



- **Location:** 1715 miles WSW of the Azores
- **Maximum Sustained Winds:** 90 mph; Category 1
- **Current Movement:** WNW at 7 mph

A turn toward the north is expected today, followed by a turn to the northeast on Friday, with an east-northeastward turn expected over the weekend. Steady to rapid weakening is forecast over the next couple of days.

Leslie poses no direct threat to Florida.





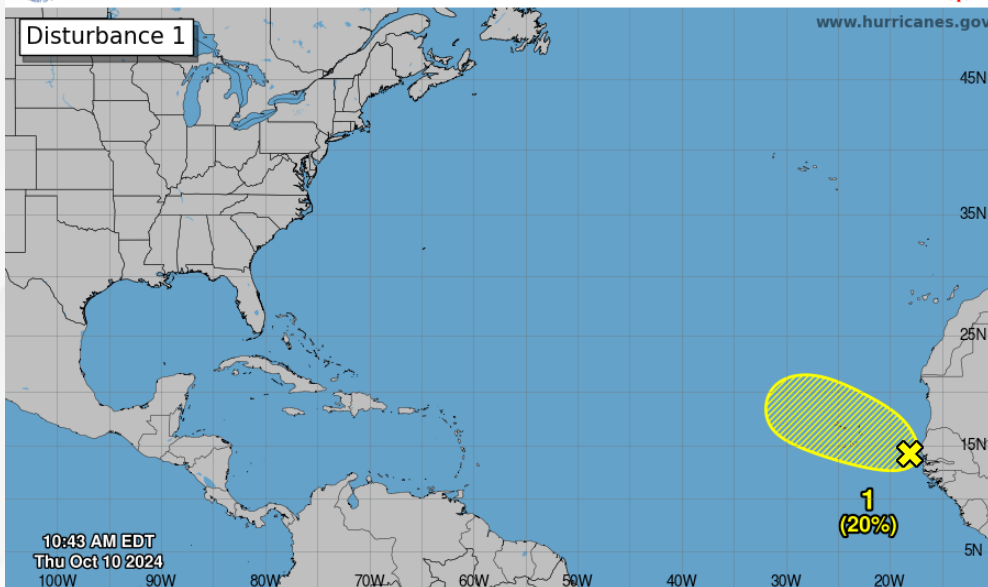
Tropical Weather Outlook

Eastern Tropical Atlantic



Seven-Day Graphical Tropical Weather Outlook

National Hurricane Center Miami, Florida



Current Disturbances and Seven-Day Cyclone Formation Chance: ✕ < 40% ✖ 40-60% ✗ > 60%
Tropical or Sub-Tropical Cyclone: ○ Depression ● Storm ● Hurricane
● Post-Tropical Cyclone or Remnants



20%

48 Hour Formation



20%

7 Day Formation

A tropical wave that has now emerged off the west coast of Africa continues to produce disorganized showers and thunderstorms. Environmental conditions appear marginal for limited development of this system while it moves westward or west-northwestward across the eastern tropical Atlantic and Cabo Verde Islands on Friday. By Saturday, upper-level winds are forecast to become less favorable, and further development is unlikely after that time. Regardless of development, localized areas of heavy rain are possible across portions of the Cabo Verde Islands late Thursday through Friday.

This system poses no direct threat to Florida over the next 10 days, at least.

Chance of development through 48 hours...**low...20%**

Chance of development through 7 days...**low...20%**



Summary

FOUO – For Government Official Use Only

Hurricane Milton:

- Around 8:30 PM EDT last night (10/9), Milton made landfall as a Category 3 hurricane near Siesta Key in Sarasota County.
- Milton moved quickly across central Florida overnight, producing significant flooding and damaging winds near its path.
- With the 11:00 AM advisory, Milton is located about 135 miles east-northeast of Cape Canaveral, Florida and is moving east-northeastward at 20 mph.
- A turn toward the east is expected later today, with that motion forecast to continue over the western Atlantic waters for the next few days.
- On the forecast track, the center of Milton will move away from the east coast of Florida and pass north of the western Bahamas today.
- Maximum sustained winds are near 80 with higher gusts, making Milton a Category 1 hurricane.
- Milton is forecast to become a powerful post-tropical storm this afternoon or evening, with gradual weakening expected during the next several days.
- **Tropical Storm Warning:** Nassau, Duval, Clay, St. Johns, Putnam, Flagler, Volusia, Brevard
- **Storm Surge Warning:** Manatee/Sarasota County Line to Lee/Collier County Line, including Charlotte Harbor; Brevard/Indian River County Line northward to the Florida State Line, including the St. Johns River.
 - **Counties:** Melbourne, Volusia, Flagler, St. Johns, Duval, Nassau, Clay, Putnam
 - **Storm Surge Values (Peak Forecast):**
 - Florida State Line to Sebastian Inlet (Brevard/Indian River County Line): **3-5'**
 - St. Johns River: **2-4'**

Hurricane Leslie:

- As of 11:00 AM ET, Hurricane Leslie was located about 1715 miles west-southwest of the Azores and moving west-northwestward at 7 mph.
- A turn toward the north is expected today, followed by a turn to the northeast on Friday, with an east-northeastward turn expected over the weekend.
- Maximum sustained winds are near 90 mph with higher gusts, making Leslie a Category 1 hurricane.
- Steady to rapid weakening is forecast over the next couple of days.
- *Leslie poses no threat to Florida.*

Eastern Tropical Atlantic:

- A tropical wave that has now emerged off of the west coast of Africa continues to produce disorganized showers and thunderstorms.
- Environmental conditions appear marginal for limited development of this system while it moves westward or west-northwestward across the eastern tropical Atlantic and Cabo Verde Islands on Friday.
- By Saturday, upper-level winds are forecast to become less favorable, and further development is unlikely after that time.
- *This system poses no direct threat to Florida over the next 7-10 days at least.*

The next briefing packet will be issued on Thursday evening. For the latest information, please visit the National Hurricane Center website.



Summary

FOUO – For Government Official Use Only

Florida Outlook:

- Destructive and life-threatening winds were observed across portions of West-Central Florida overnight near and after Milton made landfall.
 - A sustained wind of 92 mph and a gust of 107 mph was reported at a UF Sentinel/WeatherFlow station in Venice.
 - Damaging hurricane-force winds, especially in gusts, will continue for a few more hours in east-central and northeast Florida.
- Even after tropical-storm force winds have dissipated, breezy winds will linger across the state.
 - **Wind Advisories** have been issued across much of North Florida and the Peninsula for winds near 10-30 mph and gusts up to 45 mph through this evening.
- There is a danger of life-threatening storm surge along the coast from east-central Florida northward to the Florida state line where Storm Surge Warnings remain in effect.
- Over the last 24-hours, **heavy rainfall totals upwards of 10-15"** has been observed across much of the Tampa Bay Area, Nature Coast, and spreading eastward along and north of the I-4 corridor from Hurricane Milton.
 - **Isolated higher pockets up to 18"** are speckled throughout Pinellas and Coastal Hillsborough Counties.
 - **Upwards of 5-10" of rainfall** has been observed further northward towards Gainesville, along eastern portions of the I-4 corridor, and south of the western I-4 corridor towards Sarasota.
 - 2-5" of rainfall expands further northward towards the I-4 corridor and southward towards Lake Okeechobee and into Southwest Florida with locally higher totals near 5-7".
- Additional widespread rainfall totals near 2-4" with **locally higher totals up to 4-6"** are possible across portions of the Northeastern Peninsula today, mainly along the I-4 corridor.
- Heavy rainfall across the central and northern Peninsula through this morning continues to bring the risk of considerable flash and urban flooding along with moderate to major riverine flooding, especially in areas where coastal and inland flooding combine to increase the overall flood threat.
 - The Weather Prediction Center (WPC) is outlooking a **Marginal Risk (level 1 of 4) for Flash Flooding** across portions of Northeast Florida south to the I-4 corridor today.
 - Heavy rainfall rates will also be a concern over already saturated and vulnerable soils; ponding water and instances of flooding will be possible, especially throughout the urban and poor drainage/low-lying areas in the Florida Peninsula.
 - **Flood Watches** extend across portions of interior and coastal East-Central Florida.
- **River Flood Warnings** have been issued for many West-Central and Northeast Florida rivers as heavy rainfall from Milton's causes water levels to rise.
 - Water levels across numerous rivers and waterways have already risen into **minor to moderate flood stage** with several rivers within **major flood stage**.
 - **Widespread moderate to major flooding** is forecast over the next day or so across West-Central and Northeast Florida waterways, as well as portions of the St. Johns and inland quicker-response river/stream systems across Central Florida within the next day or so.

The next briefing packet will be issued on Thursday evening. For the latest information, please visit the [National Hurricane Center website](#).



Tropical Update

FOUO – For Government Official Use Only



Created by:

Kennedy Tartt, Assistant State Meteorologist

Kennedy.Tartt@em.myflorida.com

State Meteorological Support Unit

Florida Division of Emergency Management

Users wishing to subscribe (approval pending) to this distribution list, register at:

https://public.govdelivery.com/accounts/FLDEM/subscriber/new?topic_id=SERT_Met_Tropics.

Other reports available for subscription are available at:

<https://public.govdelivery.com/accounts/FLDEM/subscriber/new?preferences=true>