





Focus On Change 2025

Southwest District Wastewater Update



Overview

- SSO Reporting Requirements
- Using Map Direct
- Common Deficiencies
- Southwest District Wastewater Contacts
- Questions?





SSO Reporting

FLORIDA DEPARTMENT OF ENVIRONMENTAL PROTECTION

- **SSOs must be reported in accordance with F.A.C. Rule 62-604.550 & 62-620.610**
- SSOs < 1,000 gallons **MUST** be reported to the Department within 24 hours from the time the owner/operator becomes aware
- SSOs > 1,000 gallons **MUST** be reported to the State Watch Office no later than 24 hours from the time the owner/operator becomes aware
 - If reporting to SWO is required, a Public Notice of Pollution (PNP) can be submitted via Business Portal submission, or can be submitted on the PNP webpage, or through email or call to DEP
 - <http://floridadep.gov/pollutionnotice>



Information for SSO Reporting

FLORIDA DEPARTMENT OF ENVIRONMENTAL PROTECTION

- Name, address, and telephone number of person reporting,
- Name, address, and telephone number of permittee or responsible person for the discharge,
- Date and time of the discharge and status of discharge (ongoing or ceased),
- Characteristics of the wastewater spilled or released (untreated or treated, industrial or domestic wastewater),
- Estimated amount of the discharge,
- Location or address of the discharge,
- Source and cause of the discharge,
- Whether the discharge was contained on-site, and cleanup actions taken to date,
- Description of area affected by the discharge, including name of water body affected, if any; and,
- Other persons or agencies contacted.



SSO DEP Portal

FLORIDA DEPARTMENT OF ENVIRONMENTAL PROTECTION

- DEP Business Portal
 - <https://www.fldepportal.com/DepPortal/go/home>
- SSOs are entered directly by responsible entity to ensure accurate spill information
- Reduces time spent on multi-agency notifications
- Notifies District office, populates Public Notice of Pollution and notifies DOH if within one mile of healthy beaches monitoring location
- Auto-populates nearby water bodies, if needed for report
- Auto-reminder email to finish report if not completed within five days



Map Direct

FLORIDA DEPARTMENT OF ENVIRONMENTAL PROTECTION

Facility example - City of New Port Richey WWTF; Facility ID: FL0127434

- **Tool used by DEP**
- **Helps identify waterbodies and corresponding sampling**
- **Facility locator**
- **NEXUS Portal**



 Open Map Direct

Create and share your own maps from thousands of available data layers provided by dozens of agencies including DEP.

- [Map Direct Quick Start Documents](#)
- [YouTube Tutorial Series](#)

Map Direct Gallery

Click the images below to open the maps, or select them from the drop down list.

---Choose Category--- | ---Choose Map---

Division of Air Resource Management (DARM)

[^ Top ^](#)



Map Direct: Standard Map

Search Box 24 miles wide at
28.28817664 x -72.06884766
28°17'17.4359" x -72°4'7.8516"

Drop Marker Add Label What's nearby?

Clear Print

No Search Results.

1:9,244,648

0 100 200mi

--Show County--



DOMESTIC WASTEWATER ADVANTAGEOUS MAP LAYERS

- Wastewater Facility Regulation (WAFR) - Wastewater Facilities
- Wastewater Facility Regulation (WAFR) - Residual Application
- Wastewater Facility Regulation (WAFR) - Wastewater Sites
- Waterbody IDs (WBIDs)




Add More Data to the Map

[Add REST Endpoint Layer](#) [Add Shapefile](#) [Add ArcGIS Online Item](#) [Add Storm Imagery](#) [Add Layers by Division](#)


4332 Total Items Available. [Need Help Searching?](#)

Show Only Items From Florida Department of Environmental Protection All Content Types 1/9 by Relevance to Search Criteria Compact View

Page 1/1 Items 1 - 9 of 9 [Not finding what you are looking for? Widen Filter](#)







Wastewater Facility Regulation (WAFR) Map [Back to Top](#)
Web Map Shared by FDEPMapDirect :: Florida Department of Environmental Protection
[More Information](#)
[Add Layers to Map](#) [Open as New Map](#)



Wastewater Facility Regulation (WAFR) - Wastewater Sites [Back to Top](#)
Feature Layer Shared by FDEPOpenDataPortal :: Florida Department of Environmental Protection
12558 Locations | 35 Attributes
[More Information](#)
Download as: [Shapefile](#) | [CSV Spreadsheet](#) | [KML](#) | [GeoJSON](#)
[Add Layer to Map](#)

Layers

-  **Wastewater Facility Regulation (WAFR) - Residual Application Sites - Residual Application Sites from WAFR IMS**
Feature Layer
-  **Wastewater Facility Regulation (WAFR) - Wastewater Sites - Wastewater Sites from WAFR IMS**
Feature Layer
-  **Wastewater Facility Regulation (WAFR) - Wastewater Facilities - Wastewater Facilities from WAFR IMS**
Feature Layer
-  **Waterbody IDs (WBIDs)**
Feature Layer



t: Wastewater Facility R x | Map Direct Gallery x | Map Direct: Standard Map x +

ca.dep.state.fl.us/mapdirect/?focus=standard

Waste... Water Tracker License Search SWO DEP Nexus Shareboard: All Acti... COMET Modification Admin CAP_Program Permitting ar

Legend

Added Web Map Layers from Wastewater Facility Regulation (WAFR) Map: * Wastewater Facility Regulation (WAFR) - Residual Application Sites - Residual Application Sites from WAFR IMS * Wastewater Facility Regulation (WAFR) - Wastewater Sites - Wastewater Sites from WAFR IMS * Wastewater Facility Regulation (WAFR) - Wastewater Facilities - Wastewater Facilities from WAFR IMS * Waterbody IDs (WBIDs)

[Add REST Endpoint Layer](#) [Add Shapefile](#) [Add ArcGIS Online Item](#) [Add Storm Imagery](#) [Add Layers by Division](#)

32 Total Items Available. [Need Help Searching?](#)



ca.dep.state.fl.us/mapdirect/?focus=standard

Map Direct: Waste... Water Tracker License Search SWO DEP Nexus Shareboard: All Acti... COMET Modification Admin CAP_Program Permitting and WC...

Show Legend



More Data...



Wastewater Facility Regulation (WAFR) - Residual Application



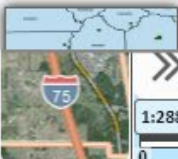
Wastewater Facility Regulation (WAFR) - Wastewater Sites



Wastewater Facility Regulation (WAFR) - Wastewater Facilities



Waterbody IDs (WBIDs)

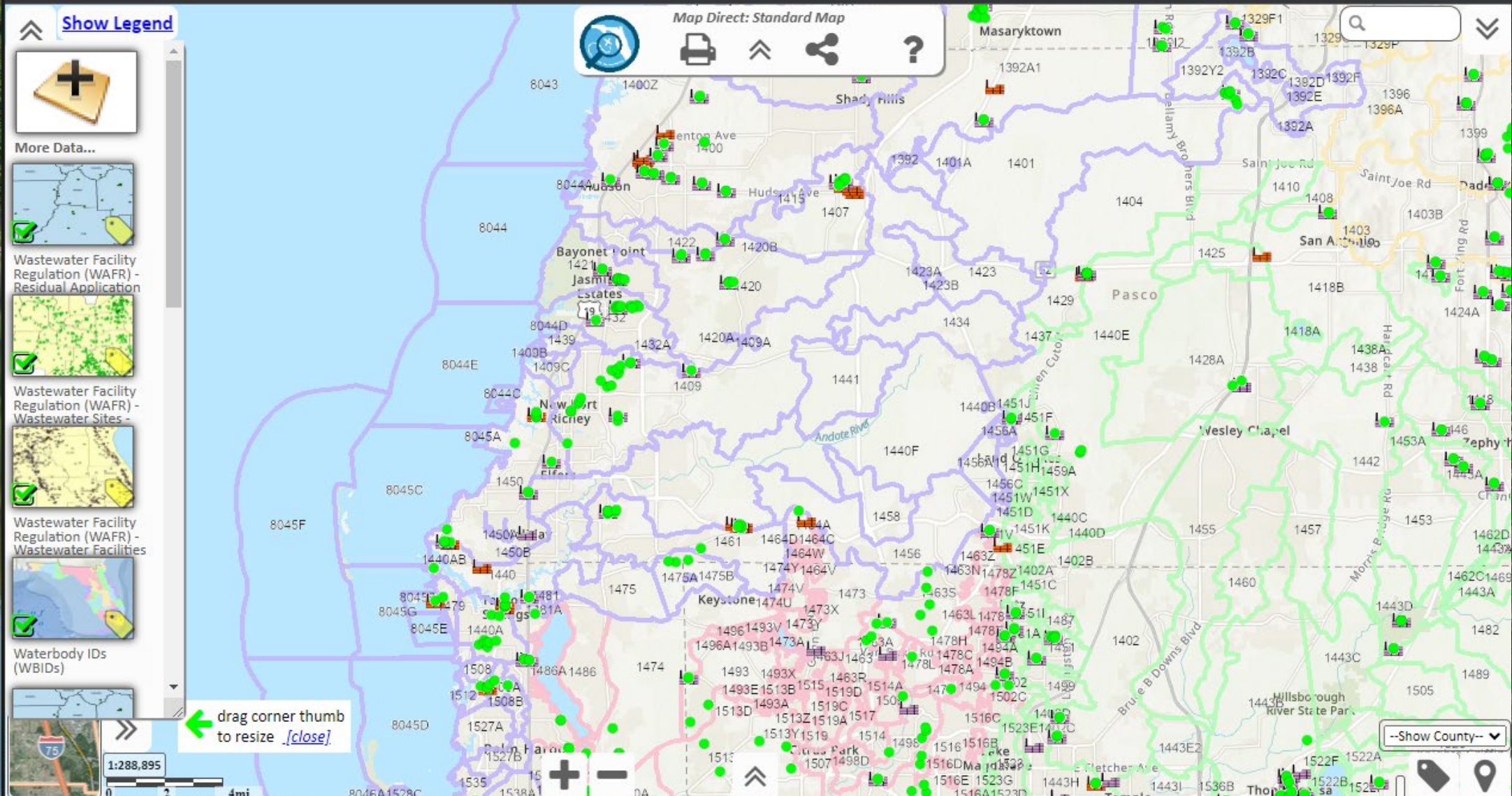


1:288,895



drag corner thumb to resize [close]

Map Direct: Standard Map



--Show County--



Show Legend



More Data...



Wastewater Facility Regulation (WAFR) - Residual Application



Wastewater Facility Regulation (WAFR) - Wastewater Sites



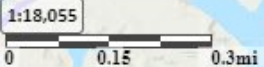
Wastewater Facility Regulation (WAFR) - Wastewater Facilities



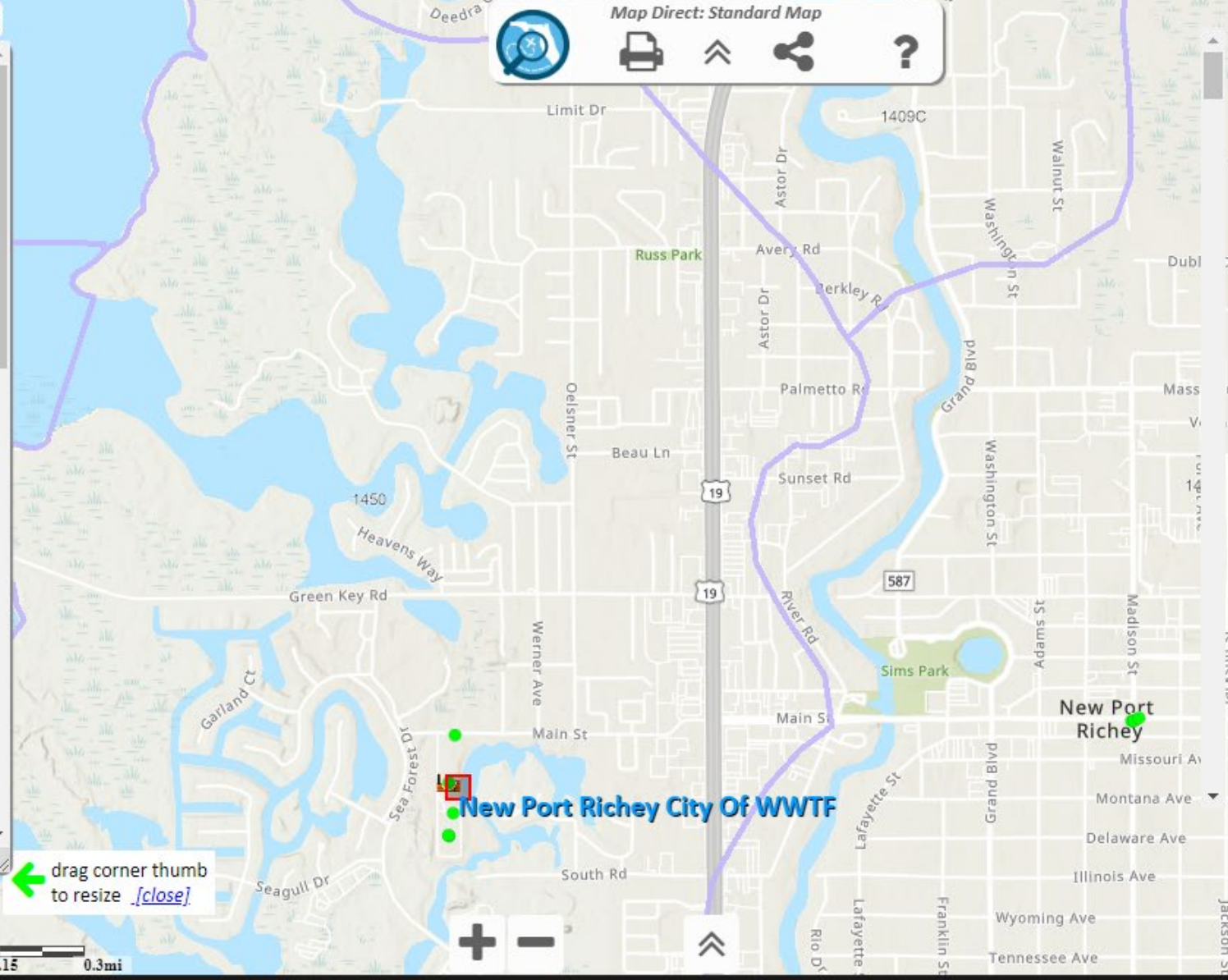
Waterbody IDs (WBIDs)



drag corner thumb to resize [\[close\]](#)



Map Direct: Standard Map. Includes icons for search, print, zoom, share, and help.



Search

Search Box 251 feet wide at 28.24841394 x -82.73524189 28°14'54.2902" x -82°44'6.8708"

Drop Marker Add Label What's nearby?

Zoom To All 9 selected features. Includes icons for Clear, Print, Table, Download, and Format.

Wastewater Facility Regulation (WAFR) - Wastewater Sites - Wastewater Sites from WAFR IMS

LOCATIONAL ID	127702
FACILITY ID	FL0127434
FACILITY TYPE	DW
FACILITY NAME	New Port Richey City Of WWTF
SITE NAME	MWI-04
SITE STATUS	A
PRETREAT REQ	N
MANAGED ENTITY	New Port Richey City Of WWTF
ME MANAGED ENTITY ID	14498
ENVIRONMENTAL INTEREST	DWW
OFFICE	SWD
OFFICE NAME	Southwest District

--Show County--



Show Legend



More Data...



Wastewater Facility Regulation (WAFR) - Residual Application



Wastewater Facility Regulation (WAFR) - Wastewater Sites



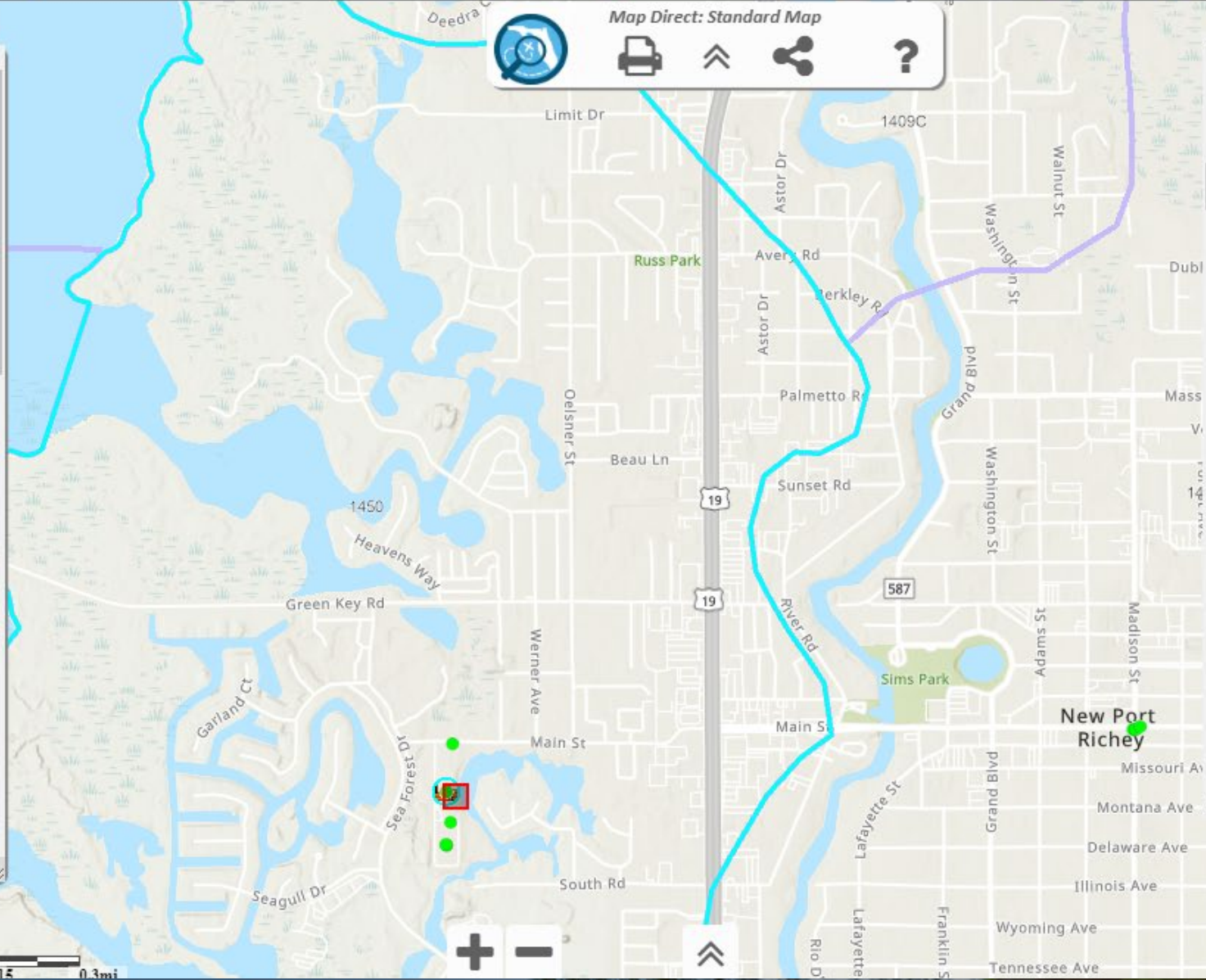
Wastewater Facility Regulation (WAFR) - Wastewater Facilities



Waterbody IDs (WBIDs)



Map Direct: Standard Map



from WAFR IMS

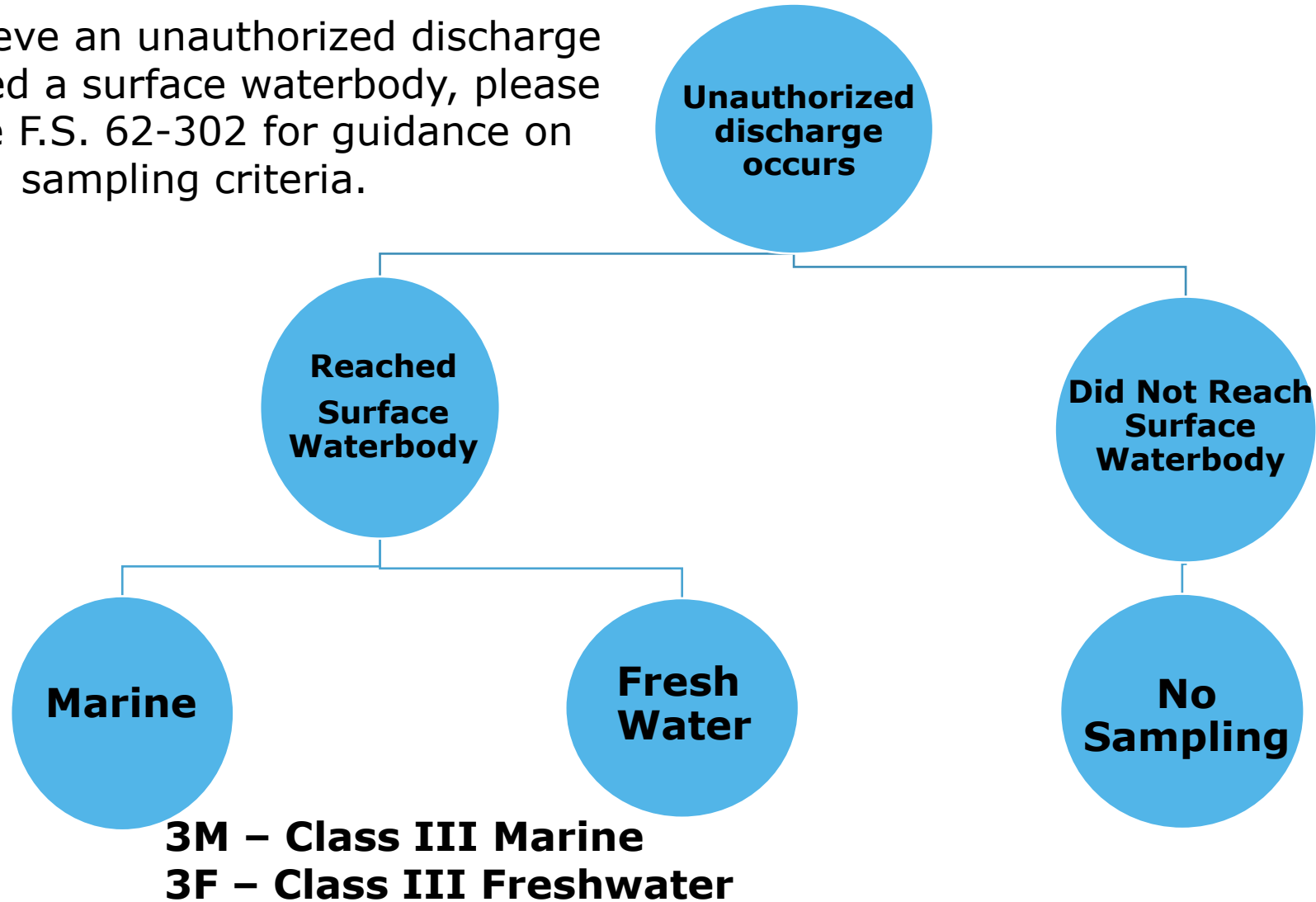
- New Port Richey City of WWTF**
FACILITY NAME
- 13454**
LOCATIONAL ID
- 12743**
WAFR FACILITY ID
- FL0127434**
FACILITY ID
- <https://prodenv.dep.state.fl.us/DepNexus/pu.../documents/FL0127434/gis-facility?search=DOCUMENTS>
- (51) Pasco County**
COUNTY
- Pasco County**
COUNTY NAME
- (Southwest District) Southwest District**
OFFICE NAME
- (SWD) Southwest Regulatory District**
DISTRICT NAME
- Y**
NPDES
- N**
PRETREAT REQ
- DPHO**
CMCD COORDINATE METHOD ID
- Domestic Wastewater Program**
ENVIRONMENTAL INTEREST
- A**
FACILITY STATUS
- DW**

--Show County--



SURFACE WATERBODIES

If you believe an unauthorized discharge has reached a surface waterbody, please reference F.S. 62-302 for guidance on sampling criteria.





Show Legend



More Data...



Wastewater Facility Regulation (WAFR) - Residual Application



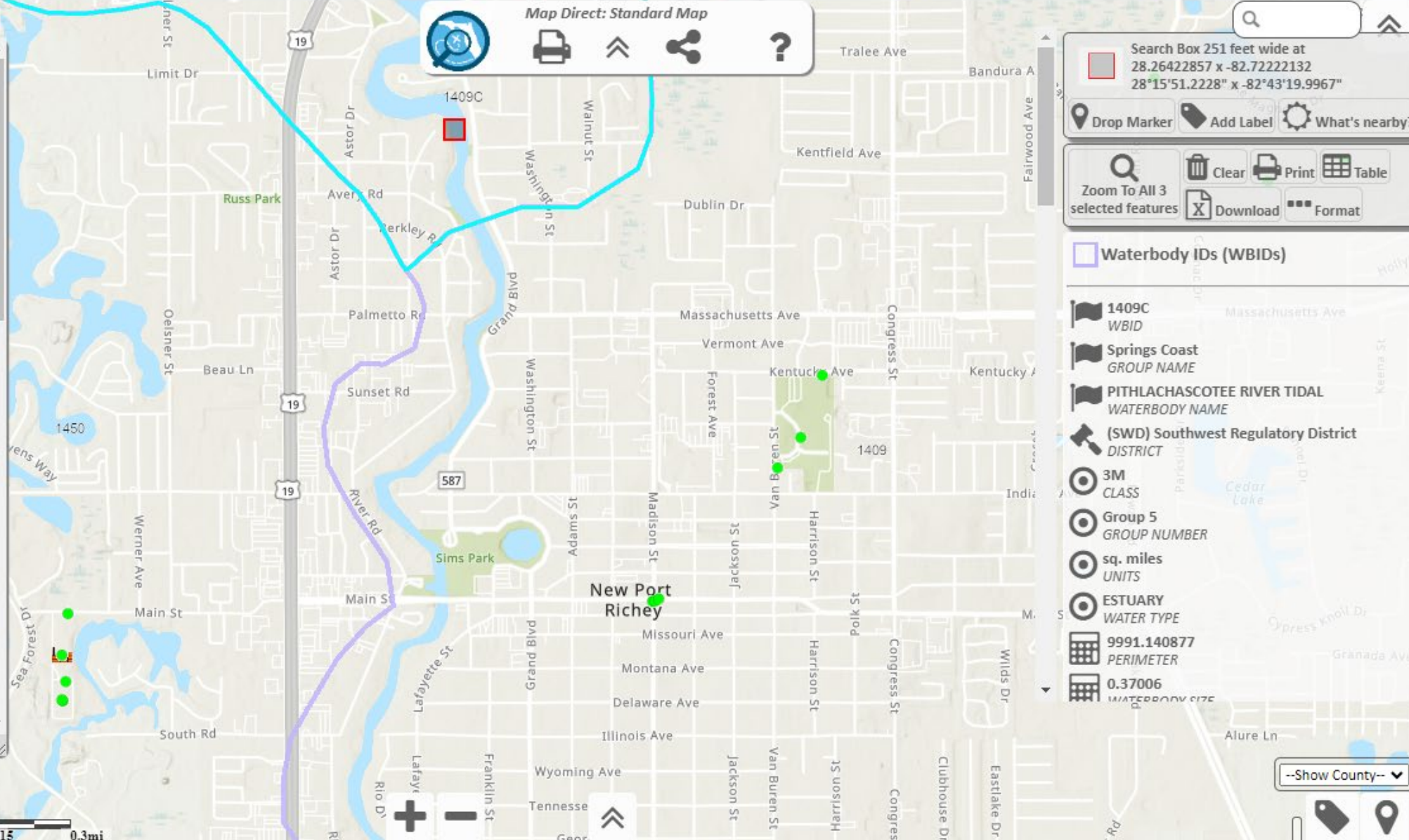
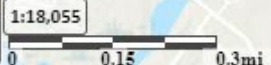
Wastewater Facility Regulation (WAFR) - Wastewater Sites



Wastewater Facility Regulation (WAFR) - Wastewater Facilities



Waterbody IDs (WBIDs)



Search Box 251 feet wide at 28.26422857 x -82.72222132 28°15'51.2228" x -82°43'19.9967"

Drop Marker Add Label What's nearby?

Zoom To All 3 selected features

Clear Print Table Download Format

Waterbody IDs (WBIDs)

- 1409C WBID
- Springs Coast GROUP NAME
- PITHLACHASCOTEE RIVER TIDAL WATERBODY NAME
- (SWD) Southwest Regulatory District DISTRICT
- 3M CLASS
- Group 5 GROUP NUMBER
- sq. miles UNITS
- ESTUARY WATER TYPE
- 9991.140877 PERIMETER
- 0.37006 WATERBODY SIZE

--Show County--



Show Legend



More Data...



Wastewater Facility Regulation (WAFR) - Residual Application



Wastewater Facility Regulation (WAFR) - Wastewater Sites



Wastewater Facility Regulation (WAFR) - Wastewater Facilities



Waterbody IDs (WBIDs)



1:18,055

0 0.15 0.3mi



Map Direct: Standard Map



Search Box 251 feet wide at 28.24956167 x -82.72282213 28°14'58.4220" x -82°43'22.1597"

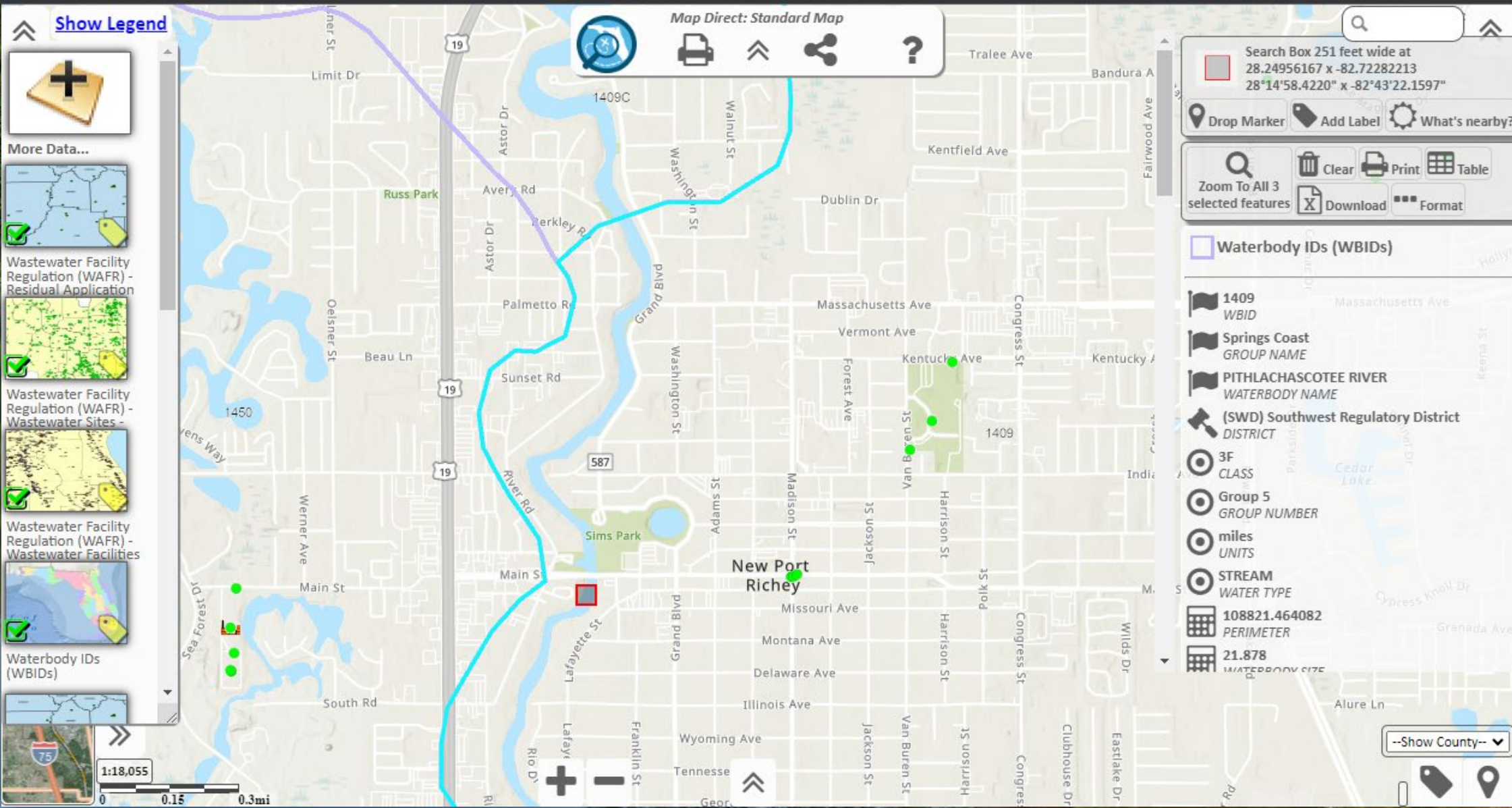
Drop Marker Add Label What's nearby?

Zoom To All 3 selected features Clear Print Table Download Format

Waterbody IDs (WBIDs)

- 1409 WBID
- Springs Coast GROUP NAME
- PITHLACHASCOTEE RIVER WATERBODY NAME
- (SWD) Southwest Regulatory District DISTRICT
- 3F CLASS
- Group 5 GROUP NUMBER
- miles UNITS
- STREAM WATER TYPE
- 108821.464082 PERIMETER
- 21.878 WATERBODY SIZE

--Show County--





Show Legend



More Data...



Wastewater Facility Regulation (WAFR) - Residual Application



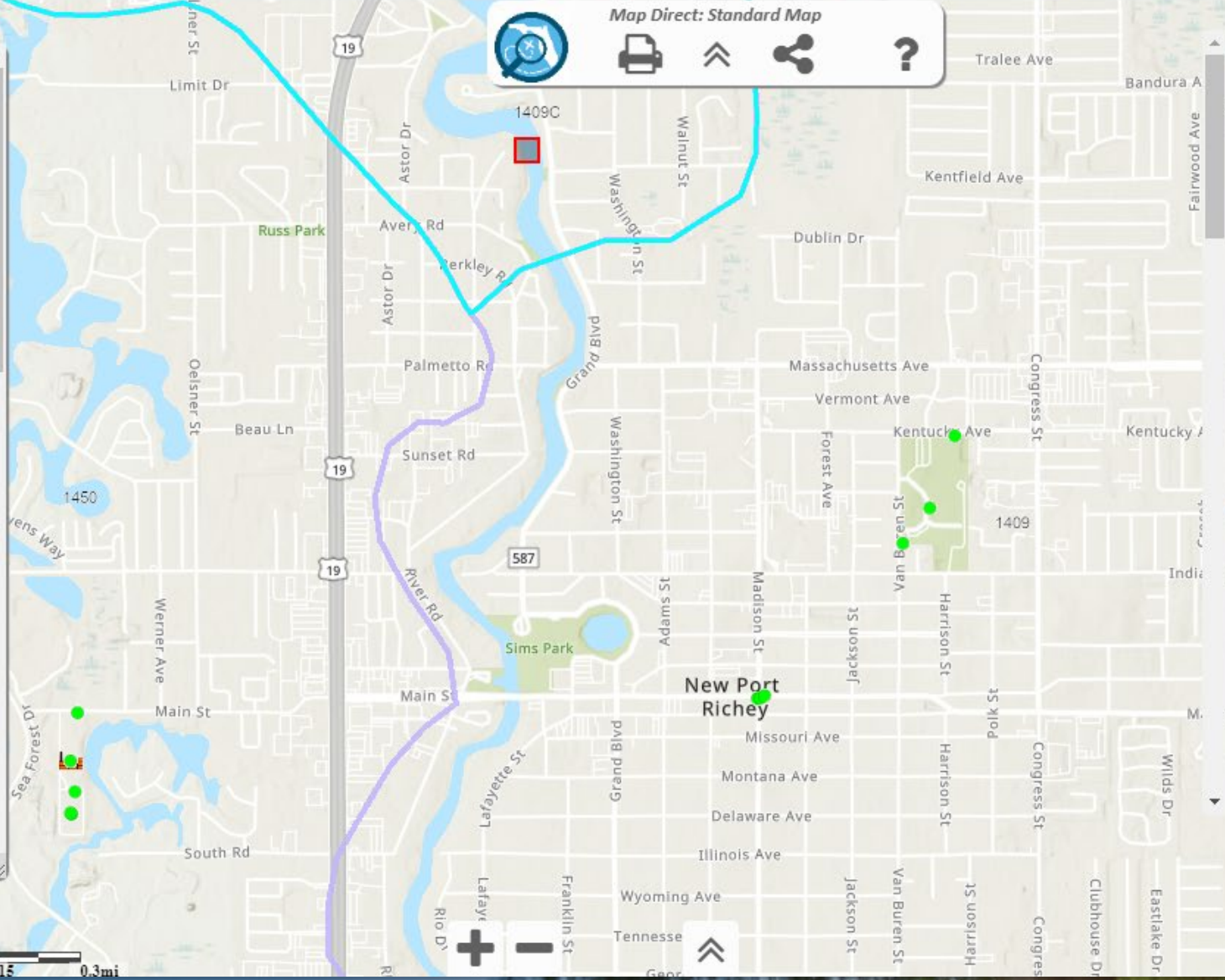
Wastewater Facility Regulation (WAFR) - Wastewater Sites



Wastewater Facility Regulation (WAFR) - Wastewater Facilities



Waterbody IDs (WBIDs)



Search Box 251 feet wide at 28.26422857 x -82.72222132 28°15'51.2228" x -82°43'19.9967"

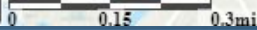
Drop Marker Add Label What's nearby?

Zoom To All 3 selected features Clear Print Table Download Format

Waterbody IDs (WBIDs)

- 1409C WBID
- Springs Coast GROUP NAME
- PITHLACHASCOTEE RIVER TIDAL WATERBODY NAME
- (SWD) Southwest Regulatory District DISTRICT
- 3M CLASS
- Group 5 GROUP NUMBER
- sq. miles UNITS
- ESTUARY WATER TYPE
- 9991.140877 PERIMETER
- 0.37006 WATERBODY SIZE

1:18,055



--Show County--



POTABLE WATER

Advantageous Map Layers

- Public Water Supply (PWS) Plants (Non-Federal)
- Public Water Supply (PWS) Wells (Non-Federal)



Common Deficiencies

FLORIDA DEPARTMENT OF ENVIRONMENTAL PROTECTION





Common Deficiencies

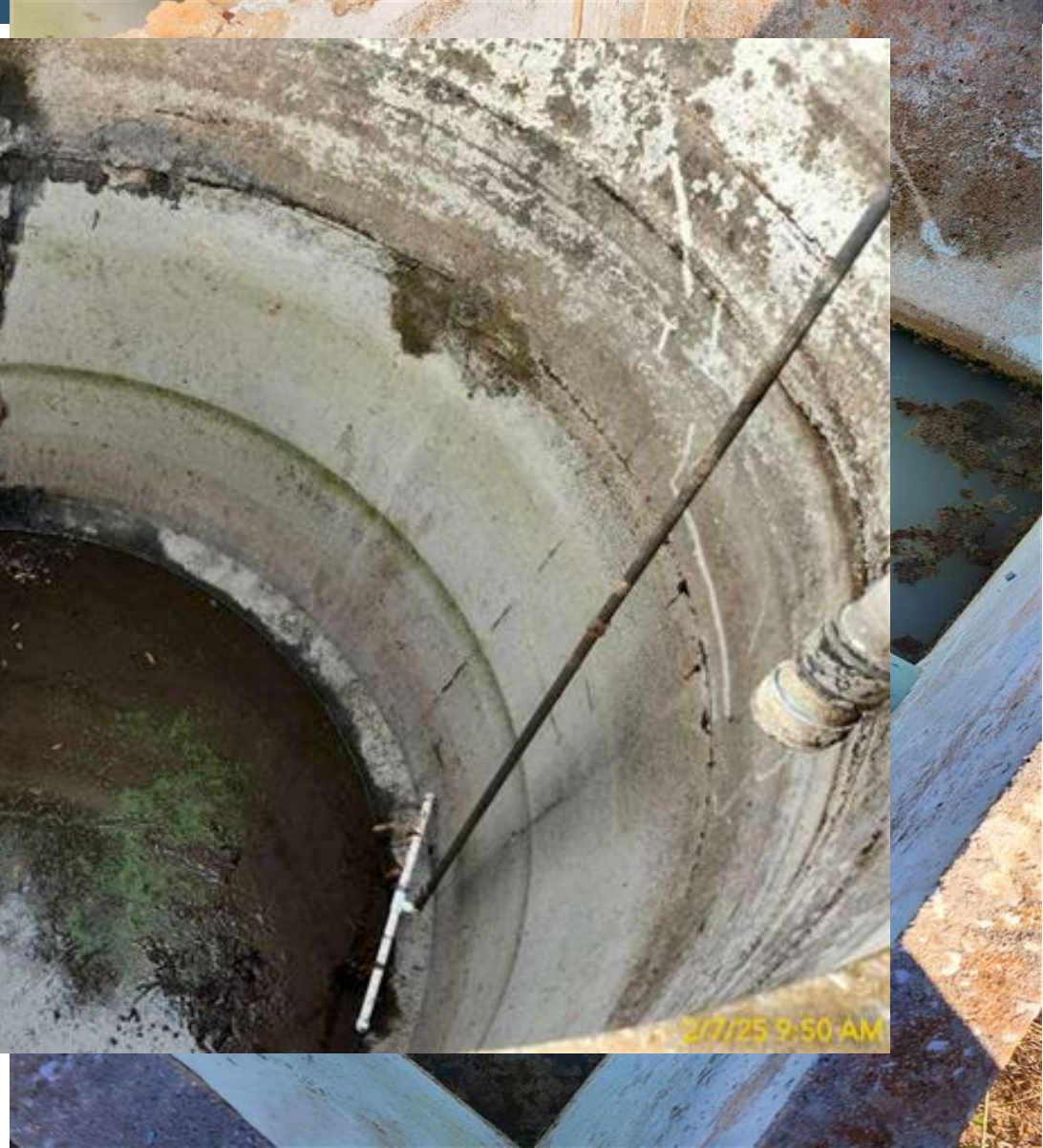
FLORIDA DEPARTMENT OF ENVIRONMENTAL PROTECTION





Common Deficiencies

FLORIDA DEPARTMENT OF ENVIRONMENTAL PROTECTION





Common Deficiencies

FLORIDA DEPARTMENT OF ENVIRONMENTAL PROTECTION





SWD Contact Information

FLORIDA DEPARTMENT OF ENVIRONMENTAL PROTECTION

Environmental Manager – Emily Larson

- Phone: (813) 470- 5955
- Email:
Emily.Larson@FloridaDEP.gov

Environmental Consultant – Erica Peck

- Phone: (813) 470- 5906
- Email:
Erica.Peck@FloridaDEP.gov



Inspector Contact Information

FLORIDA DEPARTMENT OF ENVIRONMENTAL PROTECTION

➤ **Jessie Standridge**

➤ **Phone: (813) 470-5736**

➤ **Email: Jessie.Standridge@FloridaDEP.gov**

➤ **Hannah Teague**

➤ **Phone: (813) 470-5727**

➤ **Email: Hannah.Teague@FloridaDEP.gov**

➤ **Maryn Tidwell**

➤ **Phone: (813) 470-5919**

➤ **Email: Maryn.Tidwell@FloridaDEP.gov**

➤ **Anthony Disipio**

➤ **Phone: (813) 470-5860**

➤ **Email: Anthony.Disipio@FloridaDEP.gov**



Inspector Contact Information

FLORIDA DEPARTMENT OF ENVIRONMENTAL PROTECTION

➤ Lauren Ballard

➤ Phone: (813) 470-5784

➤ Email: Lauren.Ballard@FloridaDEP.gov

➤ David Petti

➤ Phone: (813) 470-5748

➤ Email: David.Petti@FloridaDEP.gov

➤ Emmalise Hunter

➤ Phone: (813) 470-5787

➤ Email: Emmalise.C.Hunter@FloridaDEP.gov

➤ Alexandra Myers

➤ Phone: (813) 470-5751

➤ Email: Alexandra.Myers@FloridaDEP.gov

➤ Lauren Squires

➤ Phone: (813) 470-5937

➤ Email: Lauren.Squires@FloridaDEP.gov



SWD Contact Information

Site - near I-75/Fletcher Ave.

Southwest District Office

Telecom Park

13051 N. Telecom Parkway, Suite 101

Temple Terrace, FL 33637

(813) 470-5700

(813) 470-5995 FAX



General Contact Information

- **DEP SWD (813) 470-5700**
 - <https://floridadep.gov/southwest/>
- **FRWA (850) 668-2746**
 - www.frwa.net
- **EPA (800) 423-4791**
 - www.epa.gov
- **Florida State Watch Office 1 (800) 320-0519**
 - www.floridadisaster.org



Questions?