

4kV 600 Amp Disconnect Change Out

Chief Judge: Mark Vickers, City of Tallahassee

Mean Time: **7 minutes**

Drop Dead Time: **10 minutes**

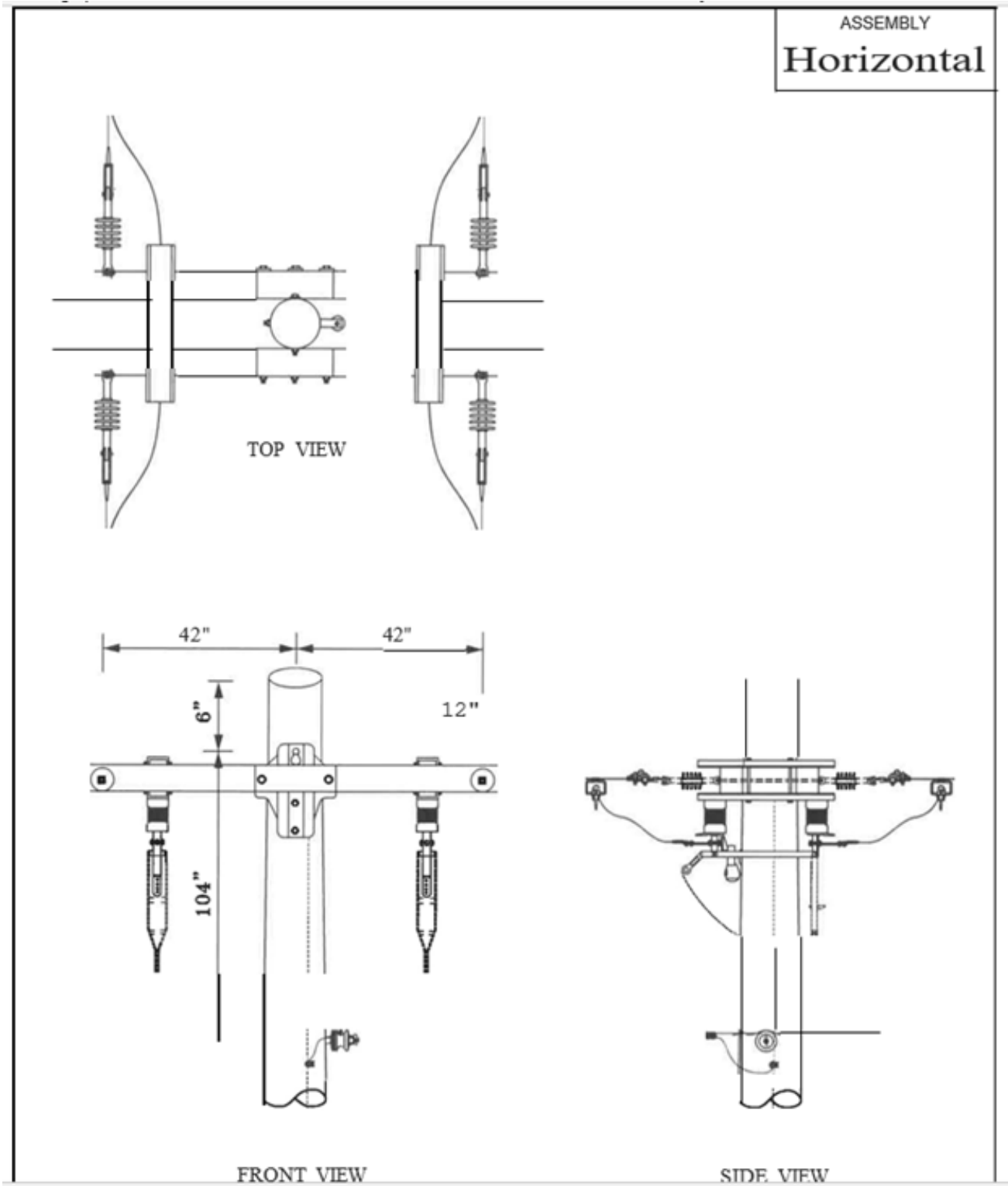
Event Summary:

This is a 4-kV event working with Class II or higher rubber gloves off a pole. The team will replace a 600 amp under-slung switch on the end of an 8' cross arm on a 40' pole. The load can not be interrupted. The jumpers will be #2, stranded copper. Teams will be allowed 5 minutes for set up and questions.

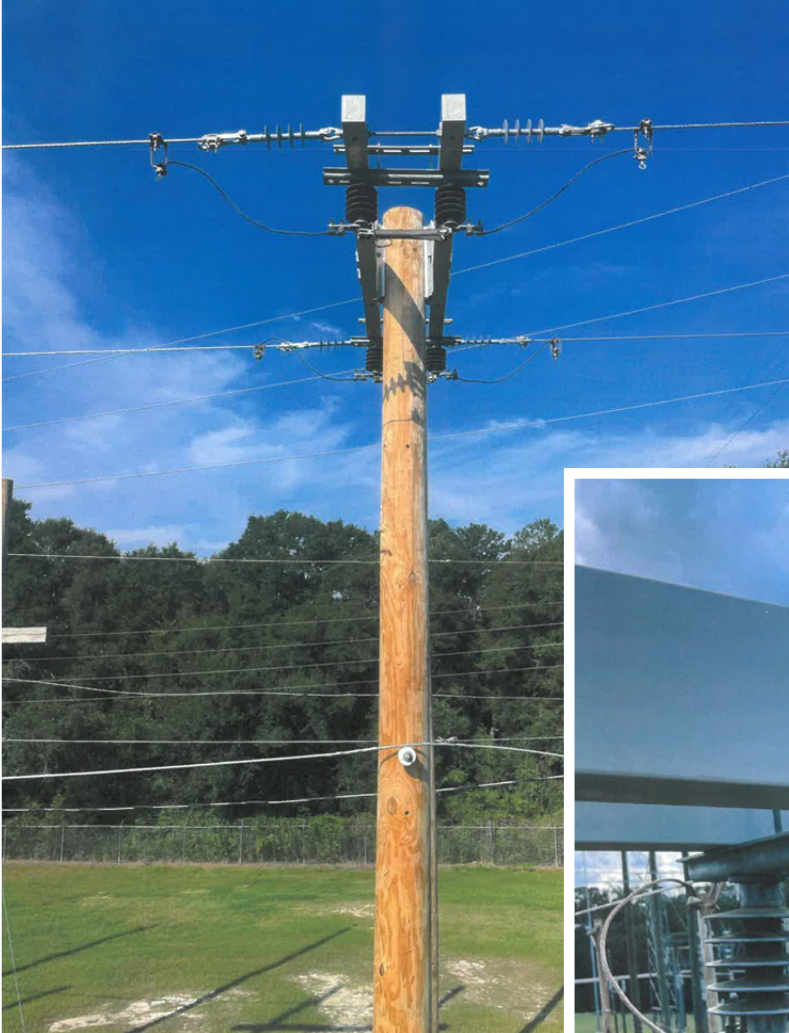
Event Specifics:

1. Both sides of neutral and clevis must be covered.
2. If installed by hand, Permanent jumpers and switches must be covered while installing temporary jumpers.
3. Primary inside MAD must be covered while replacing the switch.
4. The energized switch must be covered while replacing the damaged one.
5. Jumpers can be unbolted from the switch and folded back under the cover, or they can remain on the switch to be sent down.
6. A new under-slung switch, #2 stranded copper jumpers (40"), and hotline clamps will be provided.
7. The new under-slung switch must be used.
8. The switch must be tested by operating it before the temporary jumper comes off.
9. All connections must be brushed.
10. The switch must be placed in the same operating position it was removed from.
11. This event is incomplete until both linemen are on the ground.

4kV 600 Amp Disconnect Change Out



4kV 600 Amp Disconnect Change Out



4kV 600 Amp Disconnect Change Out

