

Making Emergencies Part of the Plan



2022 HURRICANE & STORM PREPAREDNESS FORUM



Between 2016 and 2020
~60% of all CMI Was
Caused By MED



With proper planning & communication I have witnessed that collaboration and innovation are the main reasons for improved times of restoration

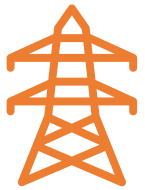




Secure the Area



Restore Critical Infrastructure



Extended Duration Outages



Provide Support for the Restoration

**Support the
Utility Companies,
by providing
temporary utility,
so they can restore their
customers
quicker and safer**



Secure the Area



Hotels



Command Centers



Crew Camps





Restore Critical Infrastructure



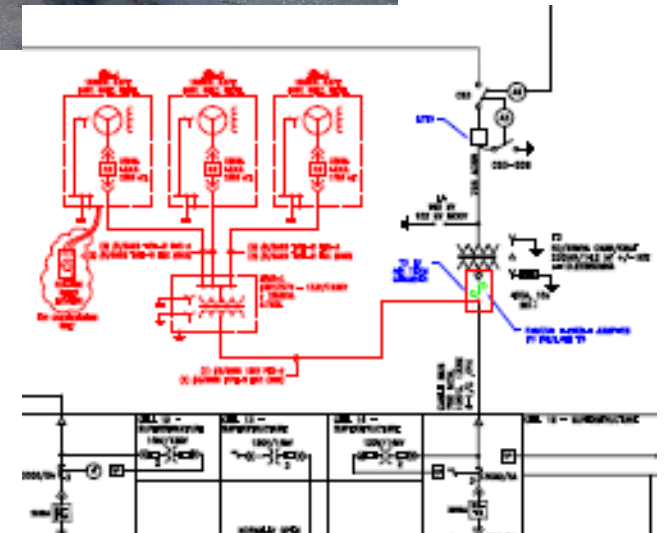
Hospitals & Health Care Facilities

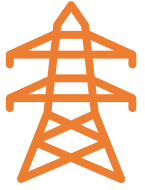


Water Stations and Other Utilities



Emergency Response Infrastructure

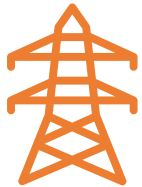




Distribution or Transmission Support

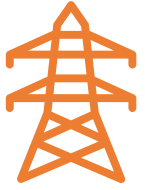


Lack of Generation



Transmission or Distribution Lines are Out

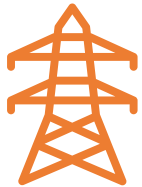




Distribution or Transmission Support

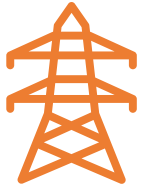


Lack of Generation



Transmission or Distribution Lines are Out





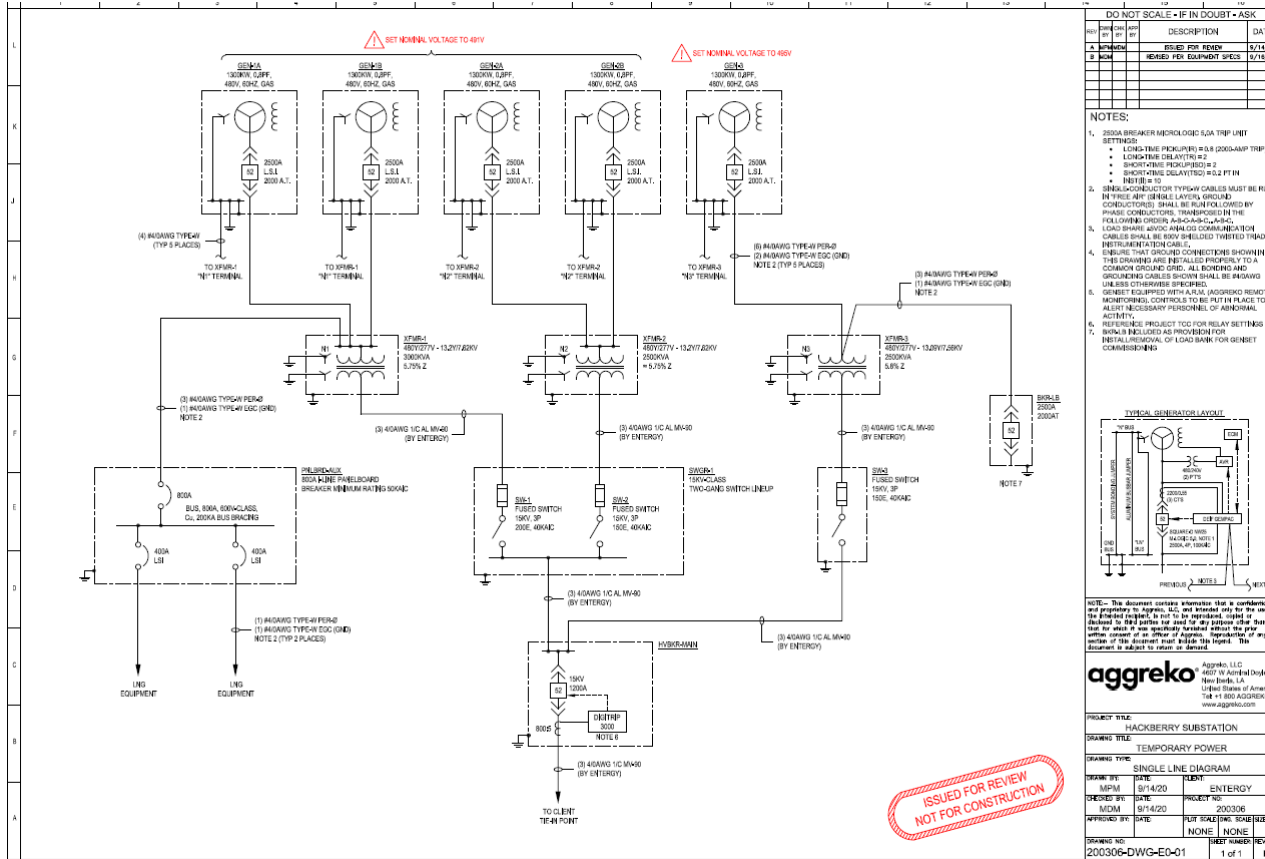
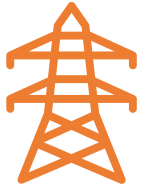
SEPTEMBER 2020

SUN	MON	TUE	WED	THU	FRI	SAT
		1	2	3	4	5
6	7	8	9	10	11	12
13	14	15	16	17	18	19
20	21	22	23	24	25	26
27	28	29	30			

OCTOBER 2020

SUN	MON	TUE	WED	THU	FRI	SAT
				1	2	3
4	5	6	7	8	9	10
11	12	13	14	15	16	17
18	19	20	21	22	23	24
25	26	27	28	29	30	31

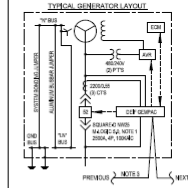
- 24,000,000 CMI Mitigated
- 99% up time
- Utility Focus to Improve Restoration Times
- Zero recordable safety incidents
- Zero environmental
- Reduced Co2 emissions ~50%
- Reduced NoX emissions ~97%
- Zero Particulate emissions



DO NOT SCALE - IF IN DOUBT - ASK

REV	DATE	BY	DESCRIPTION
1	9/14/20	MDM	ISSUED FOR REVIEW
2	9/15/20	MDM	REVISED PER EQUIPMENT SPECS

- NOTES:
- 200A BREAKER MICROLOGIC 5.0A TRIP UNIT SETTINGS:
 - LONG-TRIP PICKUP (P1) @ 0.8 (200MAIP TRIP)
 - LONG-TRIP DELAY (P1) @ 2
 - SHORT-TRIP PICKUP (P2)
 - SHORT-TRIP DELAY (P2) @ 0.2 PTH
 - NOTE: (1)
 - SINGLE-CONDUCTOR TYPFHW CABLES MUST BE RUN IN TRAYS AND GROUND LAYERS GROUND CONDUCTORS SHALL BE RUN FOLLOWED BY PHASE CONDUCTORS. TRANSFERS IN THE FOLLOWING ORDER: A-B-C-B-A-C. CABLES SHALL BE 80V SHEATHED TWISTED THREAD DISTRIBUTION CABLE.
 - ENSURE THAT GROUND CONNECTORS SHOWN IN THIS DRAWING ARE INSTALLED PROPERLY TO A COMMON GROUND GRID. ALL BONDING AND GROUNDING CABLES SHOWN SHALL BE 800V UNLESS OTHERWISE SPECIFIED.
 - GINET EQUIPPED WITH A LISA (GROUNDING RESISTOR MONITORED). CONTROL TO BE PUT IN PLACE TO ALERT NECESSARY PERSONNEL OF ANY GROUNDING ACTIVITY.
 - REFERENCE PROJECT ICD FOR RELAY SETTINGS.
 - SHOW INCLUDED AS PROVIDED FOR DETAIL PROVIDED, OF LOAD BANK FOR GINET COMMISSIONING.



NOTE: This document contains information that is confidential and proprietary to Aggreko, LLC, and intended only for the use of the intended recipient. It is not to be reproduced, copied or disclosed in any manner for use by any person other than that for which it was specifically prepared without the prior written consent of an officer of Aggreko. Reproduction of any portion of this document without the prior written consent of an officer of Aggreko is prohibited. This document is subject to return or deletion.

aggreko Aggreko, LLC
4607 W. Airport Drive, Suite 100
New Orleans, LA 70119
United States of America
Tel: +1 800 AGGREKO
www.aggreko.com

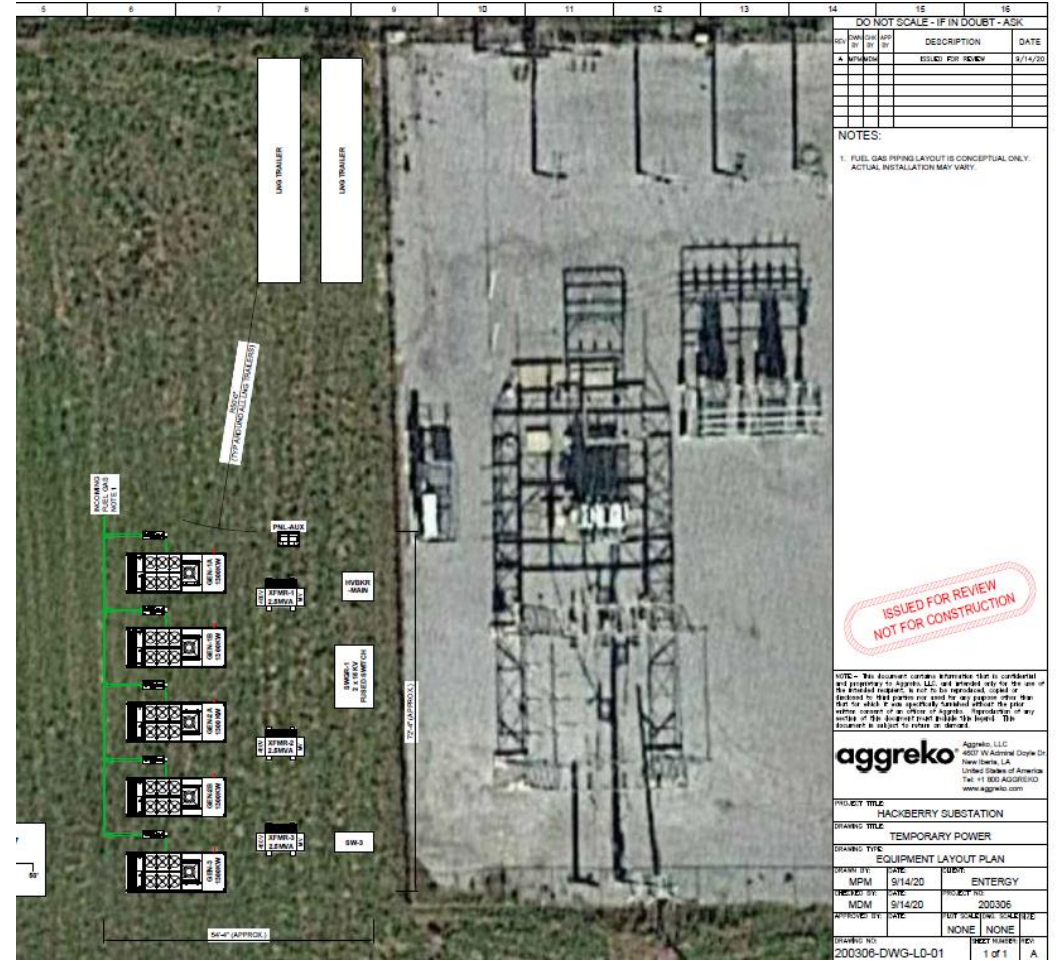
PROJECT TITLE: HACKBERRY SUBSTATION
DRAWING TITLE: TEMPORARY POWER

DRAWING TYPE: SINGLE LINE DIAGRAM

DESIGNED BY:	MDM	DATE:	9/14/20	PROJECT NO.:	200306
CHECKED BY:	MDM	DATE:	9/14/20	PROJECT NO.:	200306
APPROVED BY:	MDM	DATE:	9/14/20	PROJECT NO.:	200306

DRAWING NO: 200306-DWG-ED-01
1 of 1

ISSUED FOR REVIEW
NOT FOR CONSTRUCTION



DO NOT SCALE - IF IN DOUBT - ASK

REV	DATE	BY	DESCRIPTION
1	9/14/20	MDM	ISSUED FOR REVIEW

NOTES:
1. FUEL GAS PIPING LAYOUT IS CONCEPTUAL ONLY. ACTUAL INSTALLATION MAY VARY.

NOTE: This document contains information that is confidential and proprietary to Aggreko, LLC, and intended only for the use of the intended recipient. It is not to be reproduced, copied or disclosed in any manner for use by any person other than that for which it was specifically prepared without the prior written consent of an officer of Aggreko. Reproduction of any portion of this document without the prior written consent of an officer of Aggreko is prohibited. This document is subject to return or deletion.

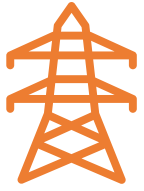
aggreko Aggreko, LLC
4607 W. Airport Drive, Suite 100
New Orleans, LA 70119
United States of America
Tel: +1 800 AGGREKO
www.aggreko.com

PROJECT TITLE: HACKBERRY SUBSTATION
DRAWING TITLE: TEMPORARY POWER

DRAWING TYPE: EQUIPMENT LAYOUT PLAN

DESIGNED BY:	MDM	DATE:	9/14/20	PROJECT NO.:	200306
CHECKED BY:	MDM	DATE:	9/14/20	PROJECT NO.:	200306
APPROVED BY:	MDM	DATE:	9/14/20	PROJECT NO.:	200306

DRAWING NO: 200306-DWG-LD-01
1 of 1



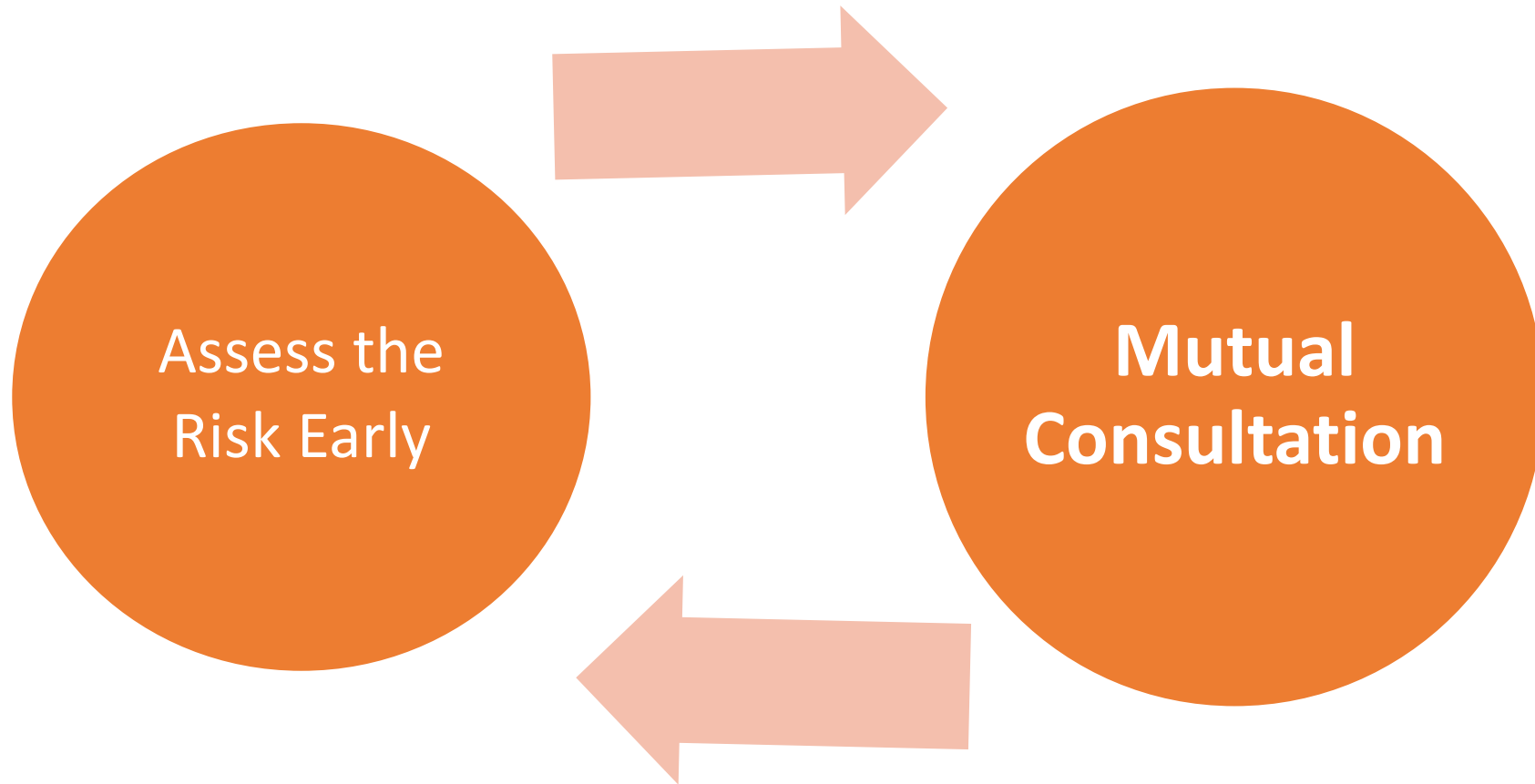
aggreko

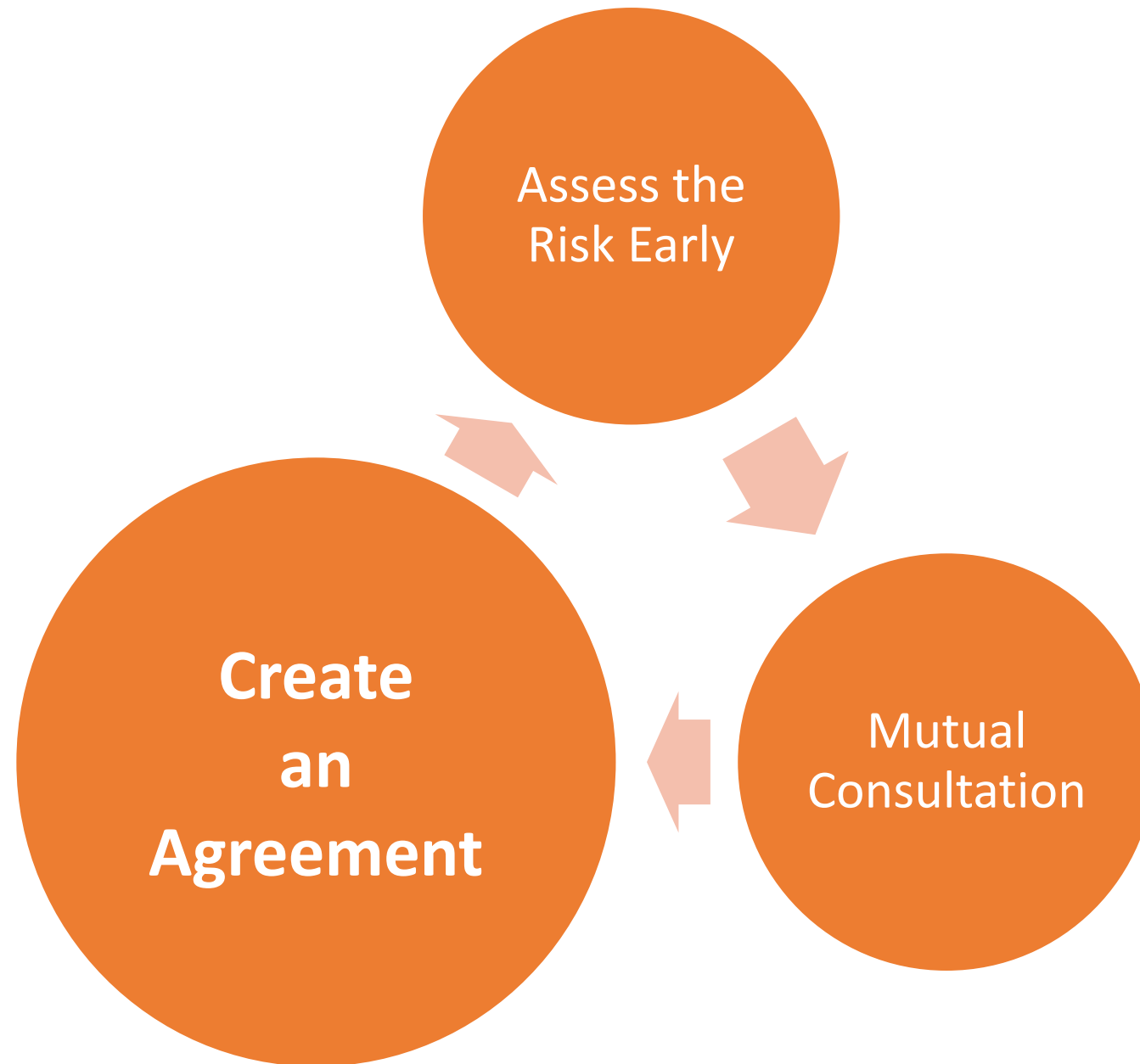


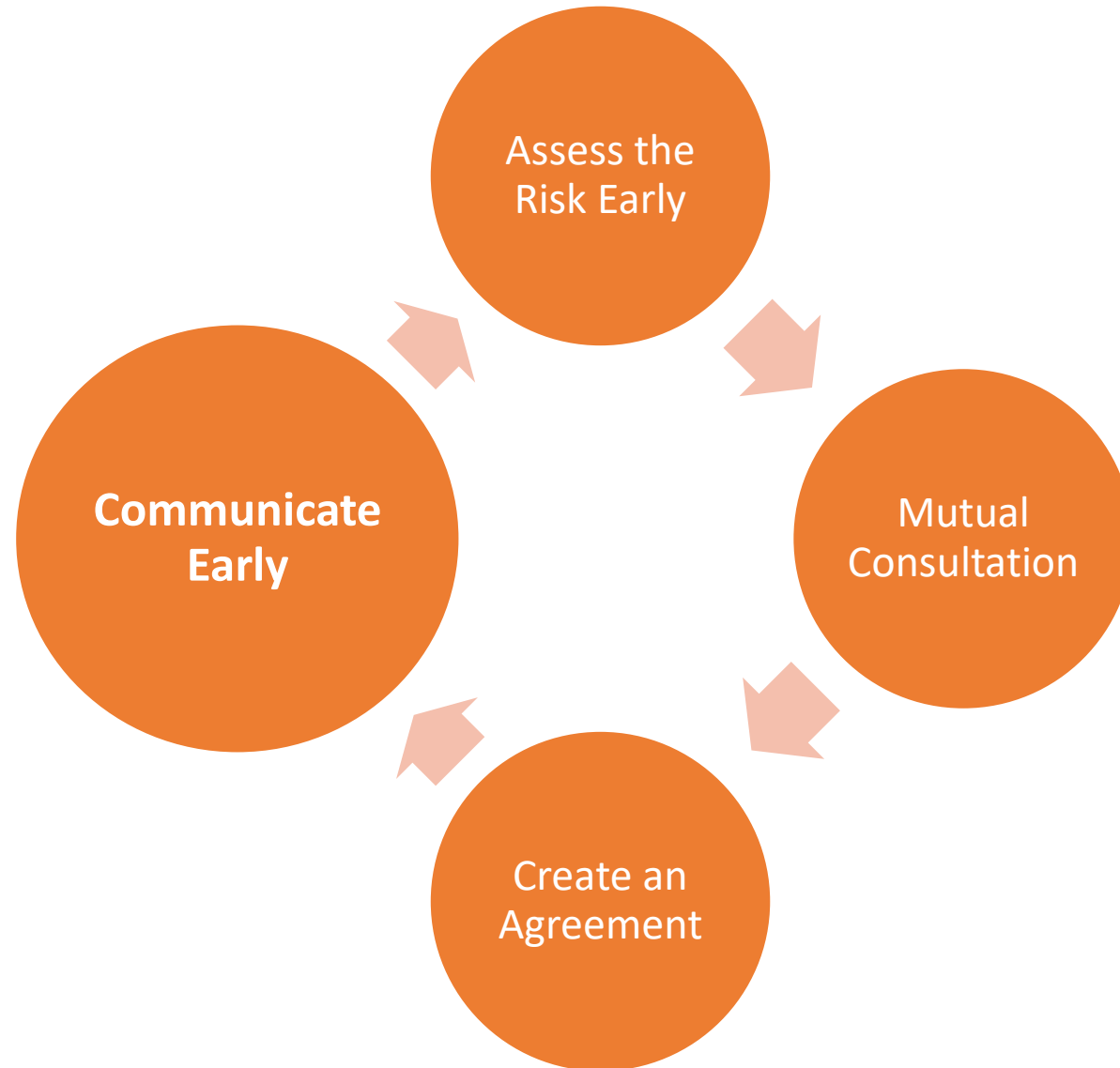


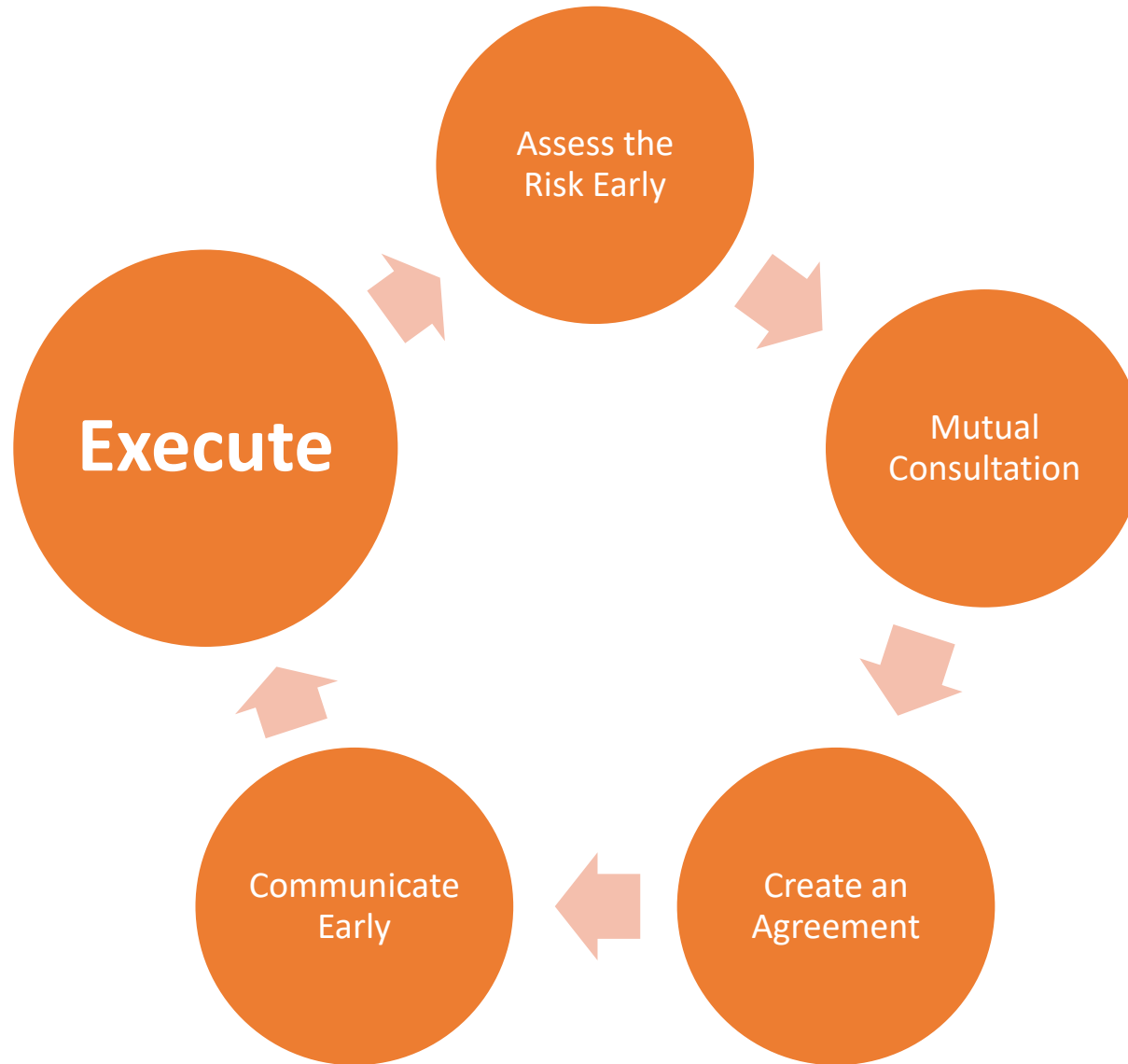
How we have found our best results

Assess the Risk Early











Although we can never predict the exact circumstances of an emergency event, with early consultation we can prepare so that if the event were to occur, we can provide temporary utilities to

Get Immediate Shelter

Energize Command Centers

Energize Critical Infrastructure

Improve Time of Restoration

Assist with the Restoration



Contact Information:

Michelle de Alba, Utility T&D Specialist, Florida
M: 561-561-9754
E: Michelle.deAlba@Aggreko.com

Dave Bell, Utility Sector Manager
E: David.Bell@Aggreko.com