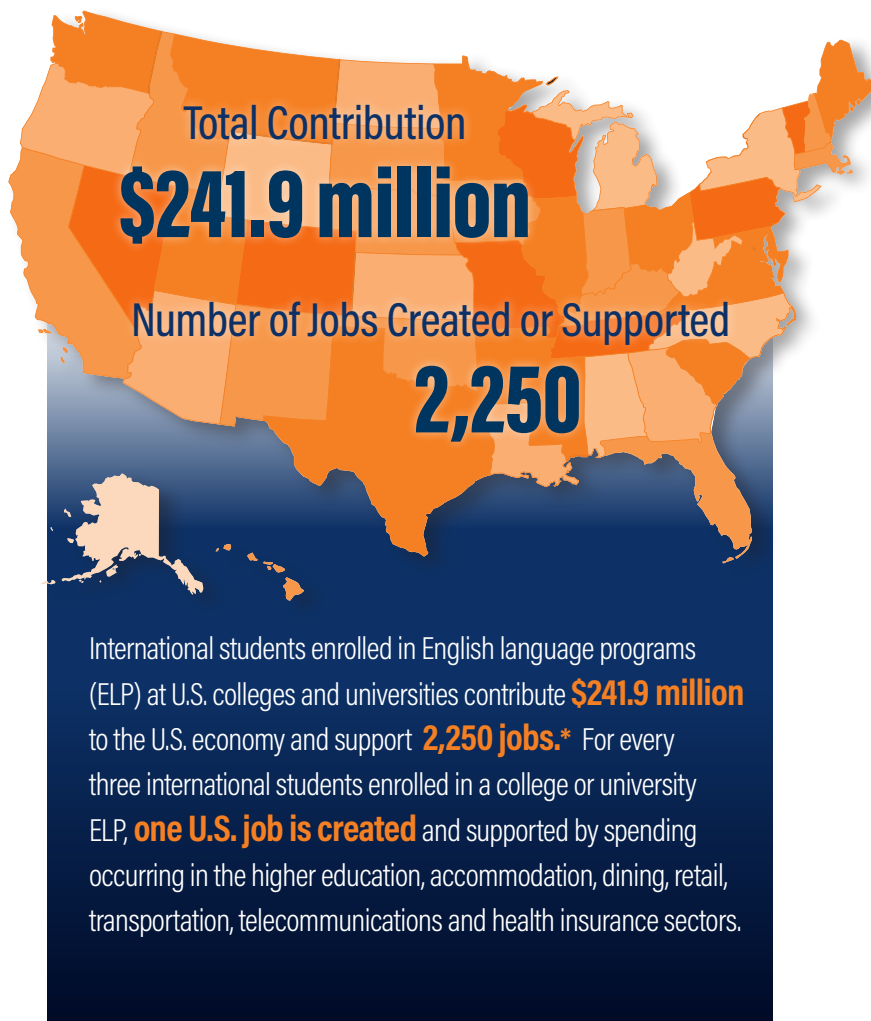


# Economic Value of U.S. College and University ENGLISH LANGUAGE PROGRAMS



State	Int'l Students	U.S. Dollars	Jobs
Alabama	277	\$6.7 million	37
Alaska	N/A†	N/A†	N/A†
Arizona	331	\$11 million	111
Arkansas	22	\$477,042	4
California	1,004	\$44.3 million	474
Colorado	121	\$4.8 million	52
Connecticut	76	\$3.5 million	39
Delaware	55	\$2.2 million	23
District of Columbia	53	\$2.8 million	24
Florida	998	\$27.3 million	231
Georgia	129	\$3.6 million	32
Hawaii	35	\$786,960	4
Idaho	30	\$946,494	8
Illinois	311	\$9.9 million	100
Indiana	66	\$2 million	18
Iowa	30	\$1.1 million	7
Kansas	76	\$2 million	13
Kentucky	51	\$1.6 million	12
Louisiana	35	\$965,880	9
Maine	20	\$696,281	7
Maryland	100	\$2.9 million	18
Massachusetts	229	\$11.4 million	120
Michigan	76	\$2.1 million	16
Minnesota	160	\$4.1 million	24
Mississippi	10	\$297,158	3
Missouri	90	\$2.7 million	27
Montana	N/A†	N/A†	N/A†
Nebraska	65	\$1.7 million	12
Nevada	N/A†	N/A†	N/A†
New Hampshire	14	\$498,346	2
New Jersey	31	\$1.2 million	12
New Mexico	9	\$258,436	2
New York	272	\$11.4 million	104
North Carolina	106	\$3 million	29
North Dakota	N/A†	N/A†	N/A†
Ohio	94	\$3.2 million	27
Oklahoma	10	\$278,201	2
Oregon	425	\$14.8 million	133
Pennsylvania	311	\$14.6 million	179
Rhode Island	13	\$590,288	3
South Carolina	42	\$1.4 million	15
South Dakota	7	\$129,237	1
Tennessee	32	\$963,432	11
Texas	637	\$16.2 million	142
Utah	290	\$5.4 million	34
Vermont	N/A†	N/A†	N/A†
Virginia	136	\$5.1 million	59
Washington	435	\$10 million	59
West Virginia	1	\$26,459	N/A
Wisconsin	44	\$961,237	8
Wyoming	1	\$24,664	N/A
<b>Total</b>	<b>7,360</b>	<b>\$241.9 million</b>	<b>2,250</b>

International students studying at colleges and universities across the United States contribute **\$33.8 billion** to the U.S. economy and support **335,423 jobs**. The economic contributions of international students are in addition to the immeasurable academic and cultural value these students bring to our campuses and local communities. For more information, access NAFSA's *International Student Economic Value Tool* at [www.nafsa.org/economicvalue](http://www.nafsa.org/economicvalue).

## CONTACT

**Rachel Banks** | [rachel.banks@nafsa.org](mailto:rachel.banks@nafsa.org)  
Sr. Director, Public Policy & Legislative Strategy

NOTE: Enrollment and dollars total includes data from Puerto Rico and the U.S. Virgin Islands. They are not listed, as the U.S. Department of Commerce does not include them in the datasets used for our jobs analysis.

\*Sources used in NAFSA's economic analysis for 2021-2022 Academic Year: U.S. Department of Education, U.S. Department of Commerce, and the *Open Doors* report.

† No college or university ELP data reported to *Open Doors* survey.