



Act 38 Odor Management Program

DPC – Odor Management On The Farm

November 7, 2013



Act 38 Odor Management Program

SCC Odor Management
Program Webpage:

www.pda.state.pa.us/scc



How we got here...





How we got here...

Ag, Communities & Rural Environment (ACRE) Act

- Urban/ Rural Interface – conflict with animal operations
- Pressure from municipalities → more restrictive than state requirements, typically with setback distances

Act 38 of 2005

- Attorney General Office
- Odor Management Program Requirement



Who needs an OM Plan?

- 1. **CAO / CAFO** that's
- 2. doing **Construction Activities** for
 - **Animal Housing** facilities
 - **Manure Storage** facilities
 - Note: Only the newly constructed facility, or portion thereof, are regulated – NOT the spreading of manure



Odor Management Program Summary

- February 27, 2009 Effective Date
- Preempts more stringent Local regulations/ ordinances
- Plan Writer must be a certified Odor Management Specialist
- Volunteers may develop & implement an OMP



Odor Management Program Summary

- Plans must be submitted to the SCC
 - SCC is reviewing authority
- Financial Assistance
 - Plan Development
 - Plan Implementation (limited cases)
 - Provided Funding available in NM Fund
 - Possible USDA NRCS funding?



What is an OM Plan?

- Written Site-Specific Plan
- *Assesses Potential Odor Impacts*
- Identifies Odor BMPs (where relevant)
- *NOT Required to Eliminate Odors*
- Note:
 - *Approved Plan required Prior to starting construction of facility*
 - Fully Implemented Plan required prior to using/ populating the facility



What's in an OM Plan?

Evaluation (Odor Site Index)

- Assesses Potential Impacts
 - Offsite Migration of Odors
 - Low, Medium, High Potential
- Criteria:
 - Odor Sources
 - Site Land Uses
 - Surrounding Land Uses



OSI Criteria

- Odor Source Factors

- Animal Type & AEUs; Manure Storage Type; History

- Site Land Use Factors

- Indicates any special ag land-use designations

- Surrounding Area Land Use Factors

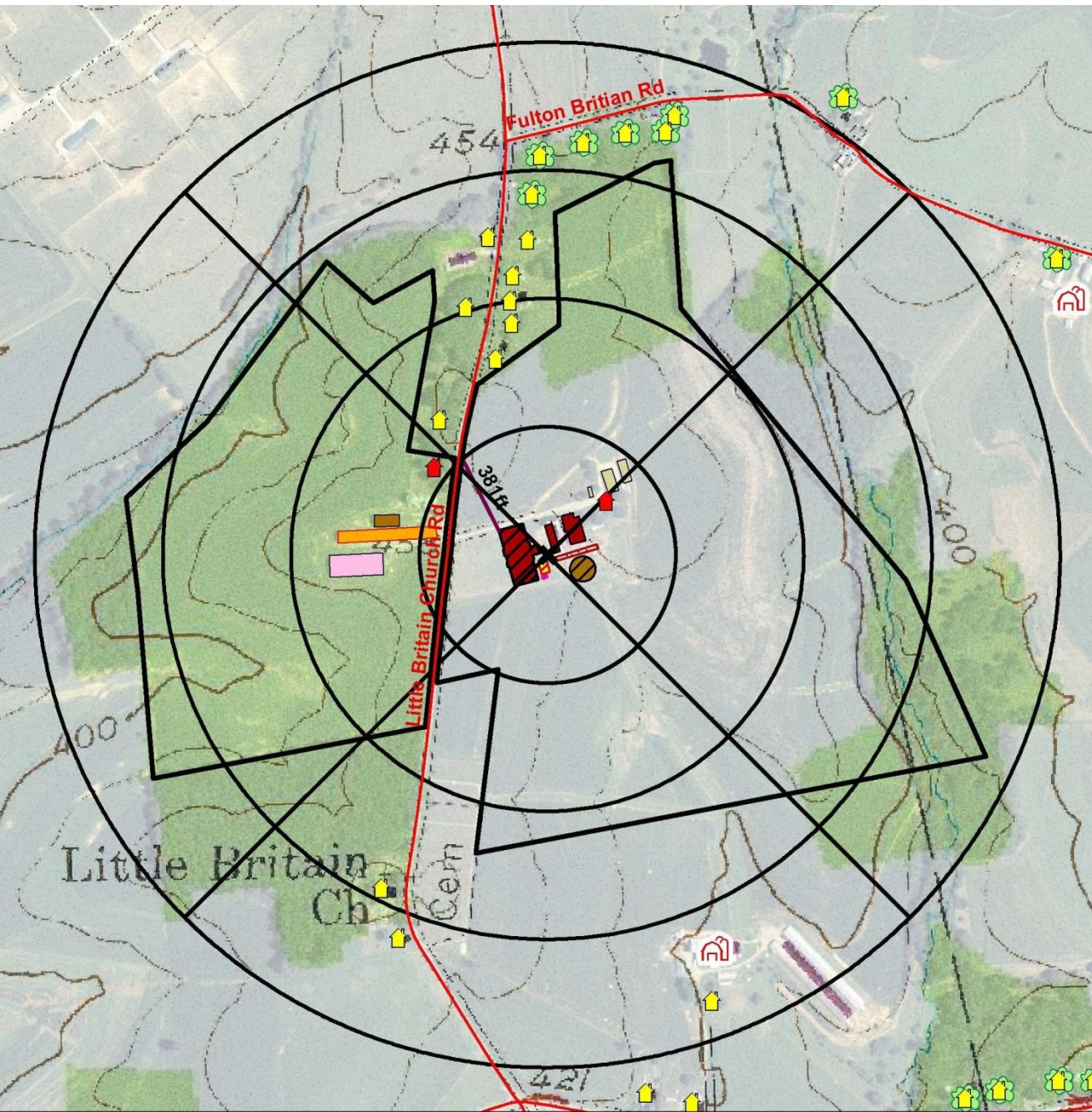
- Indicates the existence of other animal operations in the evaluation distance area
- Indicates distance of facility to nearest property line and if the neighboring property is a preserved farm



What's in an OM Plan?

Topographic Map

- Details Existing & Proposed Facilities
- Details Surrounding Land Uses within the Evaluation Distance Area
 - Neighboring Facilities
 - Public Use Facilities
 - Other Livestock & Poultry Operations

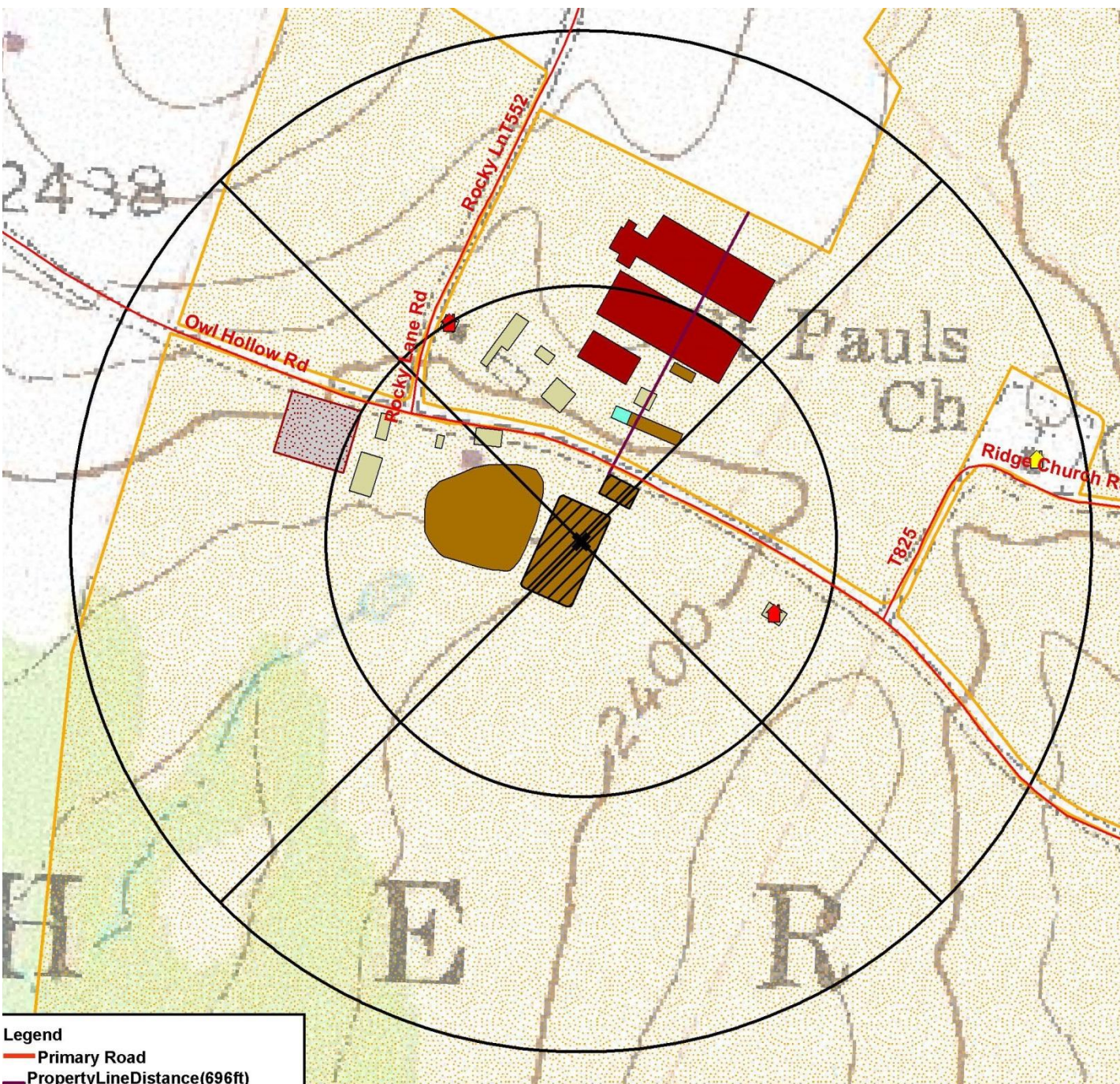


Evaluation Distance	
AEUs	Distance
<50	1200'
50-199	1800'
200-599	2400'
600+	3000'

Ex. 1:
362 AEUs

Regulates New:

- FreeStall Barn
- Calf Barn
- Manure Storage
- Solids Separator



Ex. 2:
0 AEUs

1200'
Evaluation
Distance
Area

Regulates
Manure
Storages
Only

Ex. 3:
213.5 AEUs

2400'
Evaluation
Distance
Area

Regulates New:

- Manure Storage
- Heifer Barn w/ under-barn Manure Storage





What's in an OM Plan?

Odor BMPs

- Needed if OSI Medium or High Potential (currently – 1/1/14 has a new standard)
- Level I Odor BMPs
 - Basic, Management Oriented
- Level II Odor BMPs
 - Specialized, Non-Management Oriented



What's in an OM Plan?

Odor BMPs Documentation

- Describe what information will be documented by the Operator for each Odor BMP
- Record observations to Demonstrate the BMPs are working properly
- Record observations as needed for maintenance activities



Selecting Odor Best Management Practices

- Ag Operator & planner choose Odor BMPs necessary to address the odor sources identified on site
 - Level 1 BMPs are established in the SCC's odor guidance
 - Level 2 BMPs are selected from available technologies
- Reference materials identifying Odor BMPs are on SCC website



Selecting Odor BMPs

■ Level 1 Odor BMPs

- Reducing Dust & Accumulated Feed
- Ventilation Components Management
- Minimize Damp, Exposed Manure
- Mortality Management
- Feed Management
- Manure Storage Management



Selecting Odor BMPs

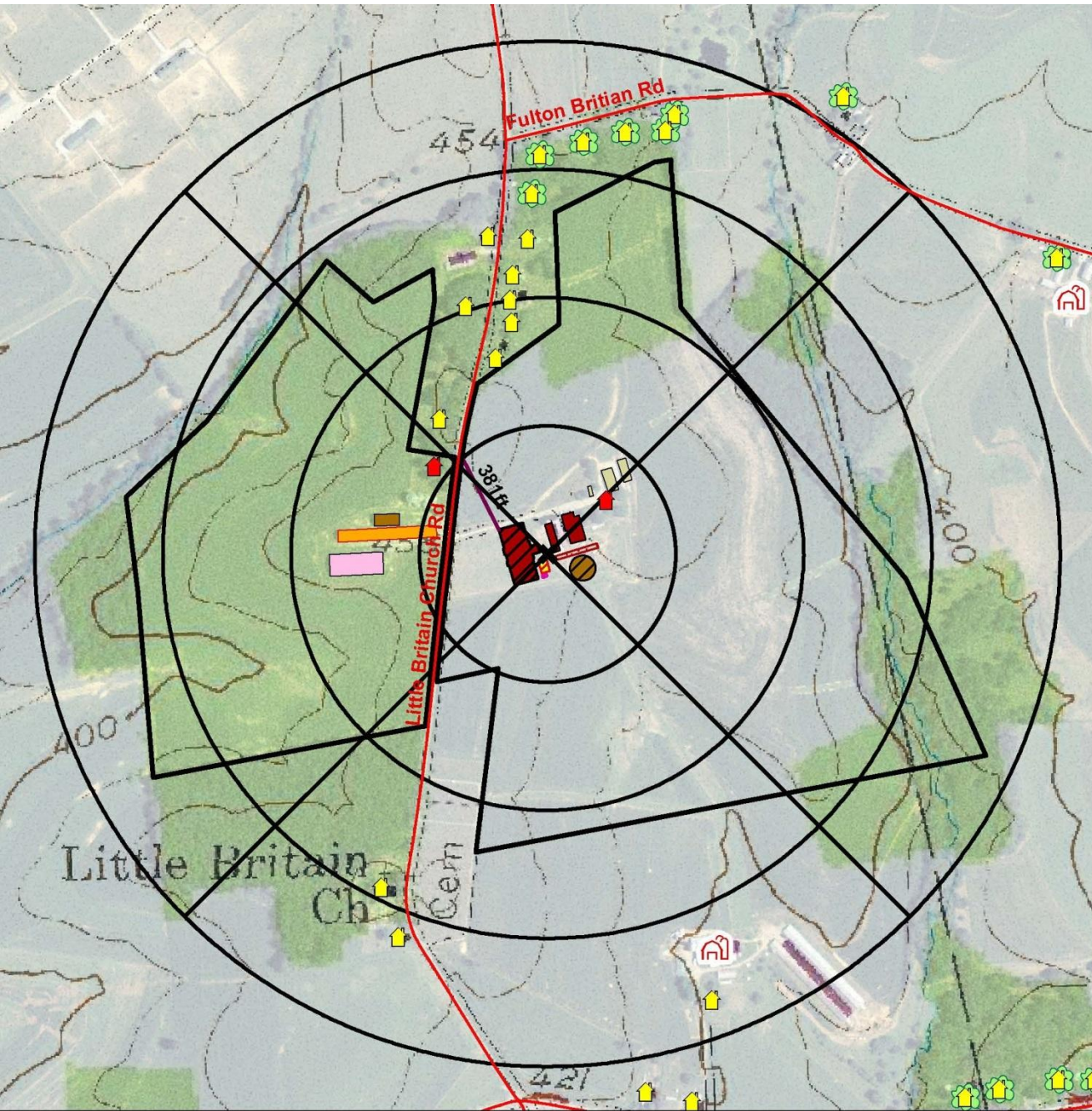
Odor BMPs Implementation, Operation & Maintenance Schedule

- Level II Odor BMPs:
 - General Construction & Implementation Criteria
 - Implementation Timeframe for each Odor BMP
 - Operation & Maintenance Procedures & Timeframe for each Odor BMP

Ex. 1:
362 AEUs

OSI Score: 32.2

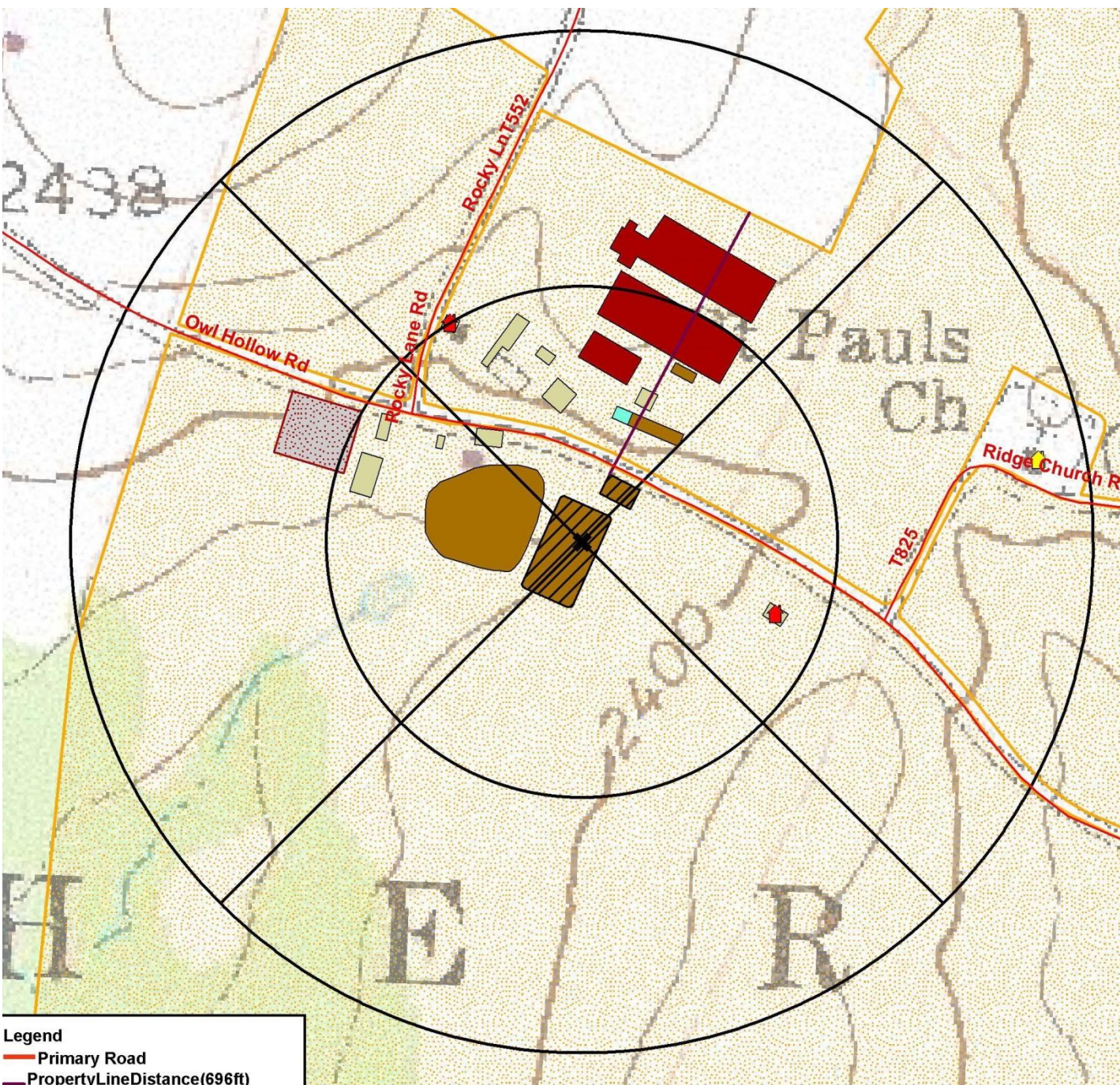
- No Required Odor BMPs
- Voluntary:
- Manure Solids Separator



Ex. 2:
0 AEUs

OSI Score: 26

- No Required Odor BMPs
- Voluntary:
- Manure Solids Separation

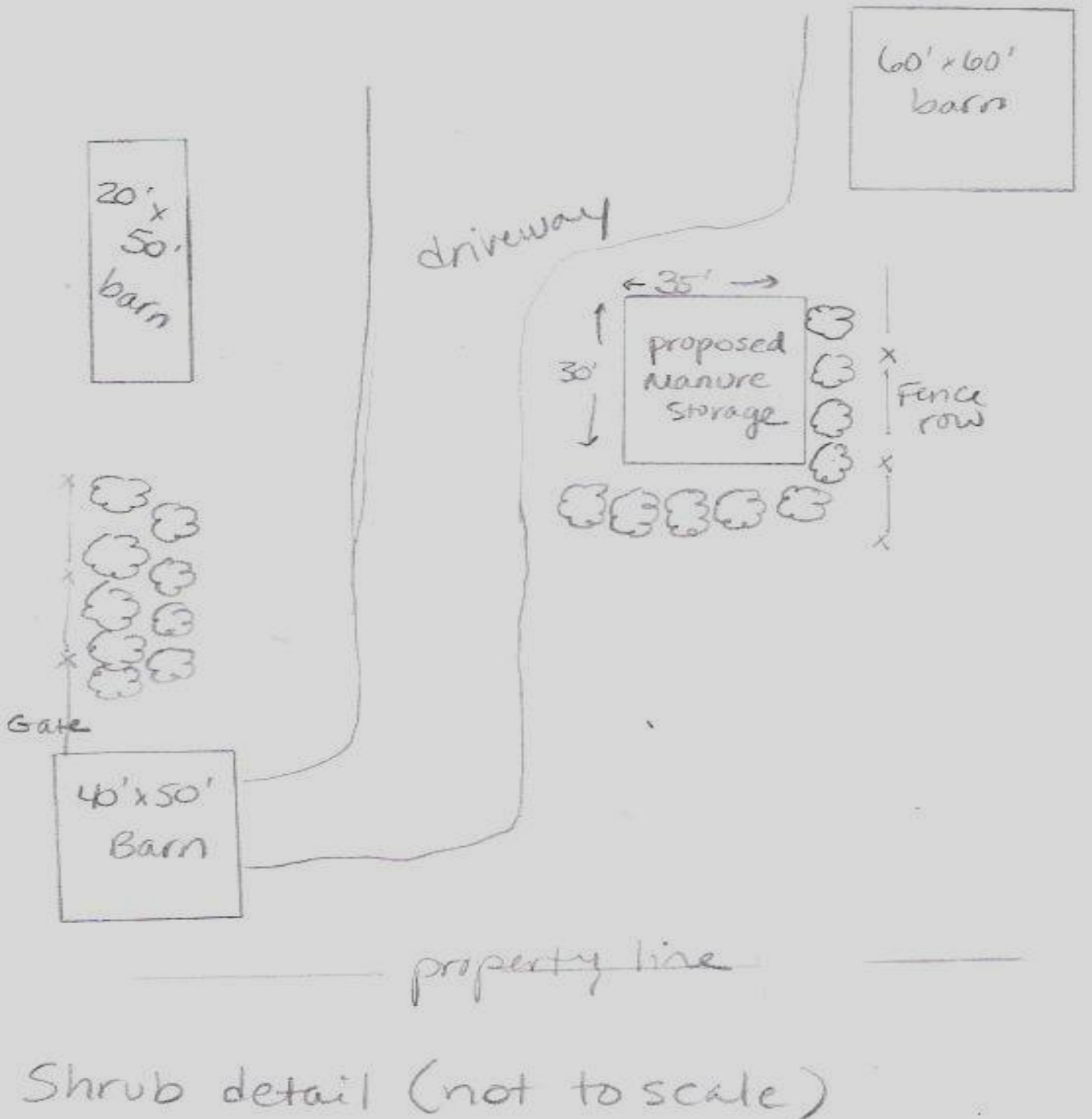


Legend

- Farm Boundary
- Farm Lane
- Operation-Related Neighboring Homes
- Neighboring Livestock

Required Level
2 Odor BMPs:

- Manure Solids Separator
- Anaerobic Digestion
- Previously implemented a Shelterbelt

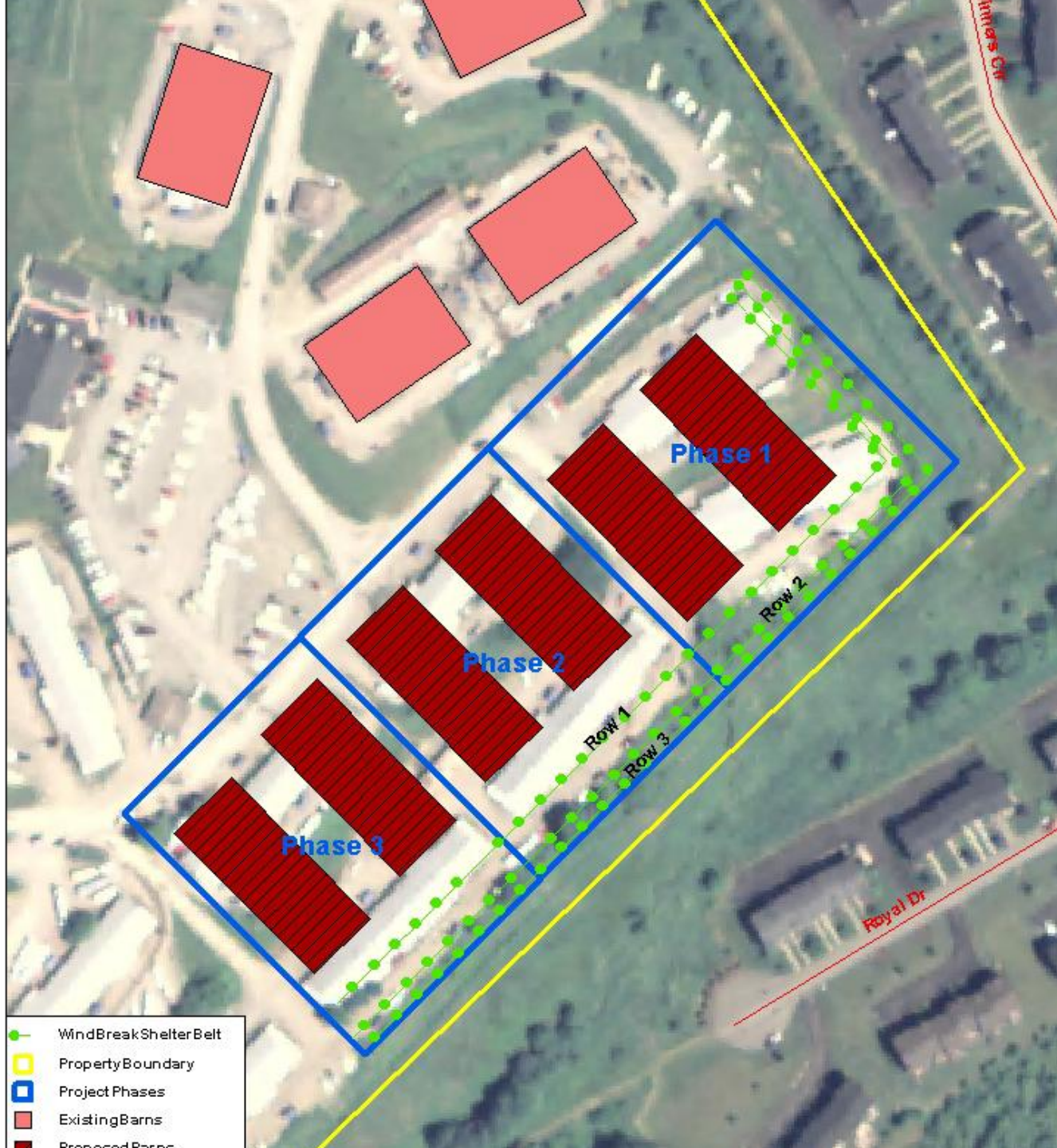


Example
Odor BMP:
Windbreak
Shelter Belt

(simple)
-Between
2 Barns
& Around
Manure
Storage

Example
Odor BMP:
Windbreak
Shelter Belt

(complex)
-3 Rows of
Trees to be
Implemented
in Phases
Around the
6 Stables





For More Odor BMP Information:

PENNSSTATE



Dr. Robert Mikesell

PSU Animal Science

<http://animalscience.psu.edu/directory/rem9>

- Odor Management Research
- Livestock Facility Siting Assessment (voluntary program)



For More Information:

SCC Odor Management Program webpage:

www.pda.state.pa.us/scc

Karl Dymond, SCC OM Program Coordinator

PDA Region 3 Office

PO Box C, Route 92 S

Tunkhannock, PA 18657-0318

(570) 836-2181 Ext. 120

kdymond@pa.gov