



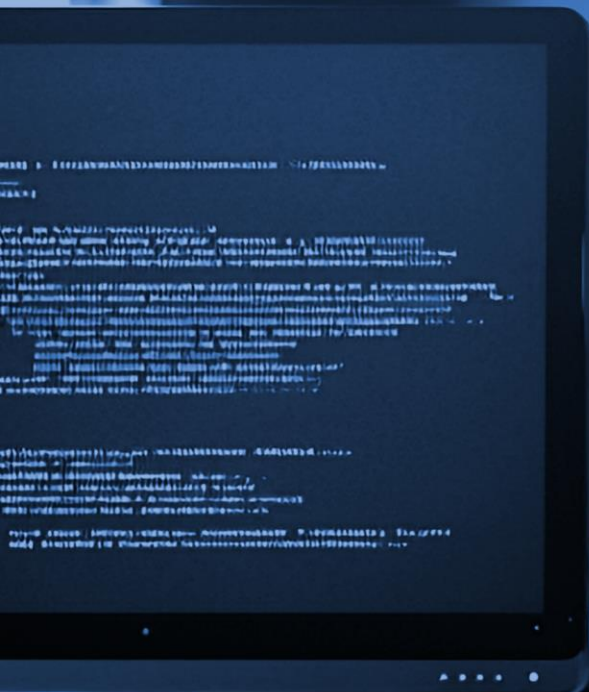
Lightspeed
Systems®

Visibility & Control to
Optimize Your
EdTech Ecosystem

And save with the CITE Discount Program!



99% higher
usage of technology
in schools than from
2022 until now





2,050 apps
in use in the
average school

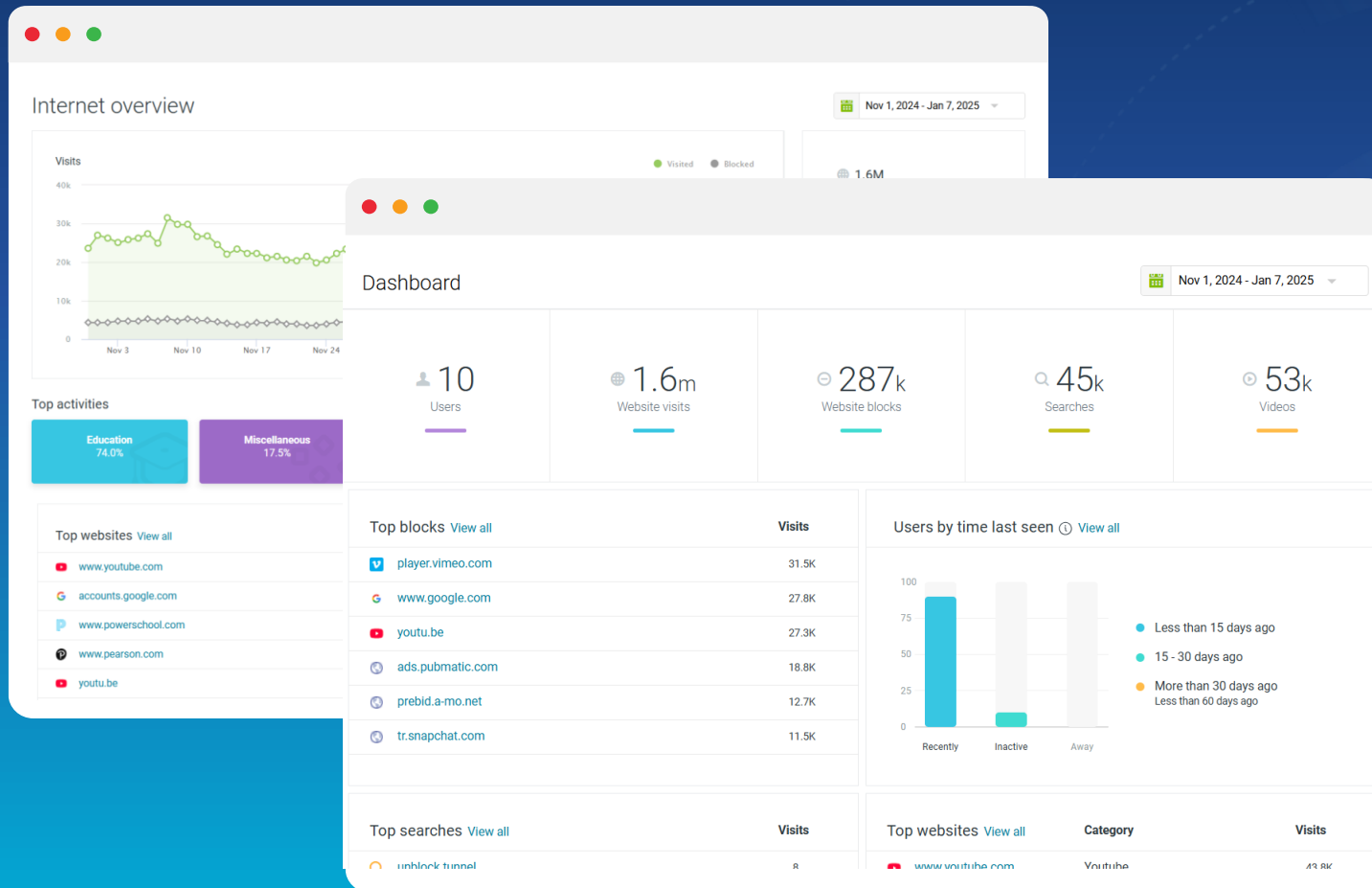




**50 hrs. per
month** of
administrator time are
spent on compliance



The most in-depth Visibility & Control to power exceptional schools





**Lightspeed
Insight™**

**Transform app
insights into
compliant, optimized
edtech**



Lightspeed Insight™

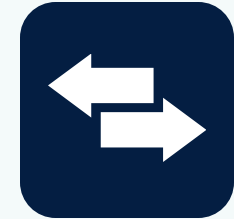
Gain valuable insights into
your district's technology
investments



6.1 million
app user activity
tracked



\$1.5 million
in annual spend
saved by one U.S.
district



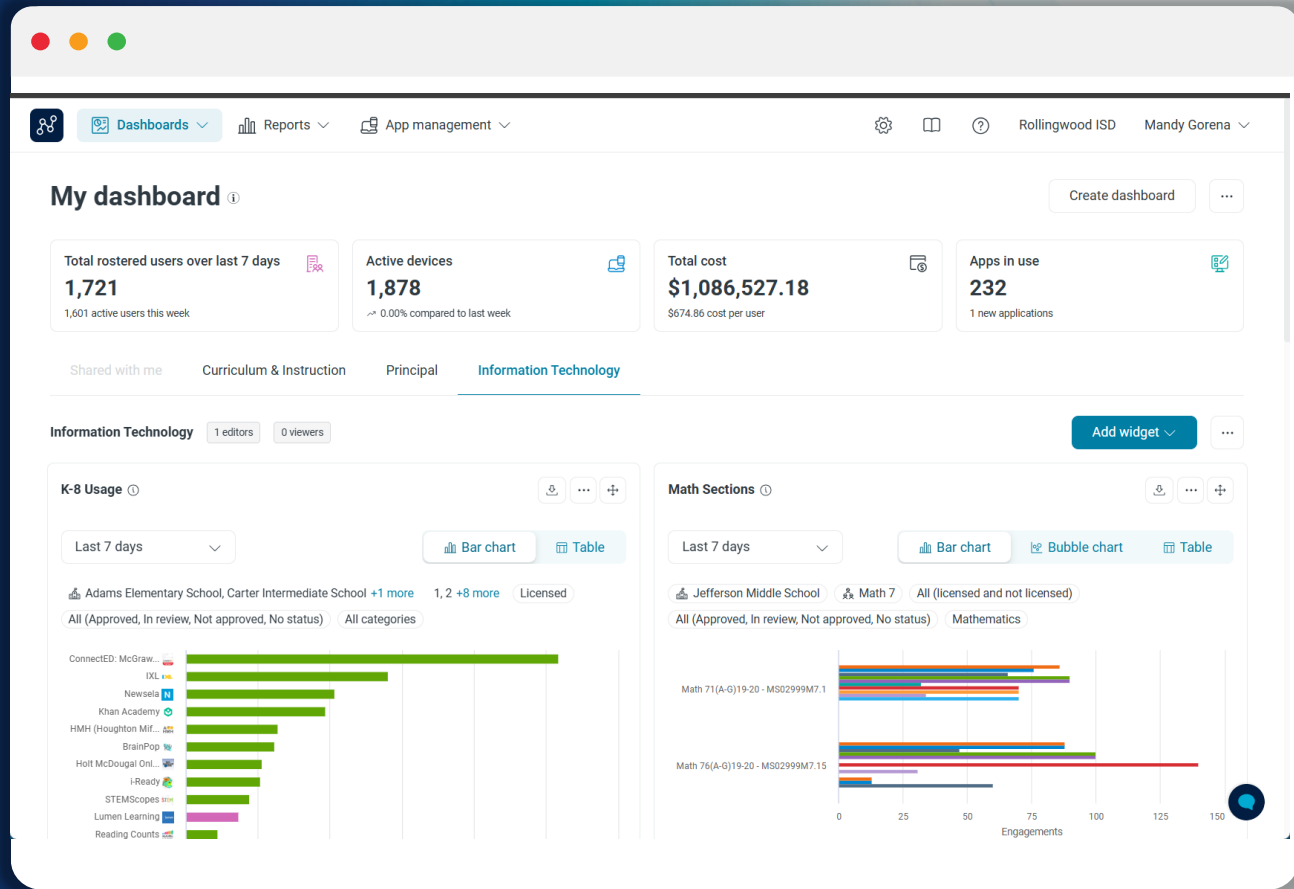
91%
of tracked apps had
privacy policy changes

About Lightspeed Insight

- Unmatched visibility into app usage
- Identify unused and redundant apps
- Uncover data privacy risks with policy scans
- Deliver digital equity with real-time device connectivity insights

Why choose Lightspeed

- Centralized analytics and granular reporting
- ROI on learning app purchases
- Student data privacy management
- Public approved apps list
- Cross-department app approval workflow
- Off-campus connectivity insights



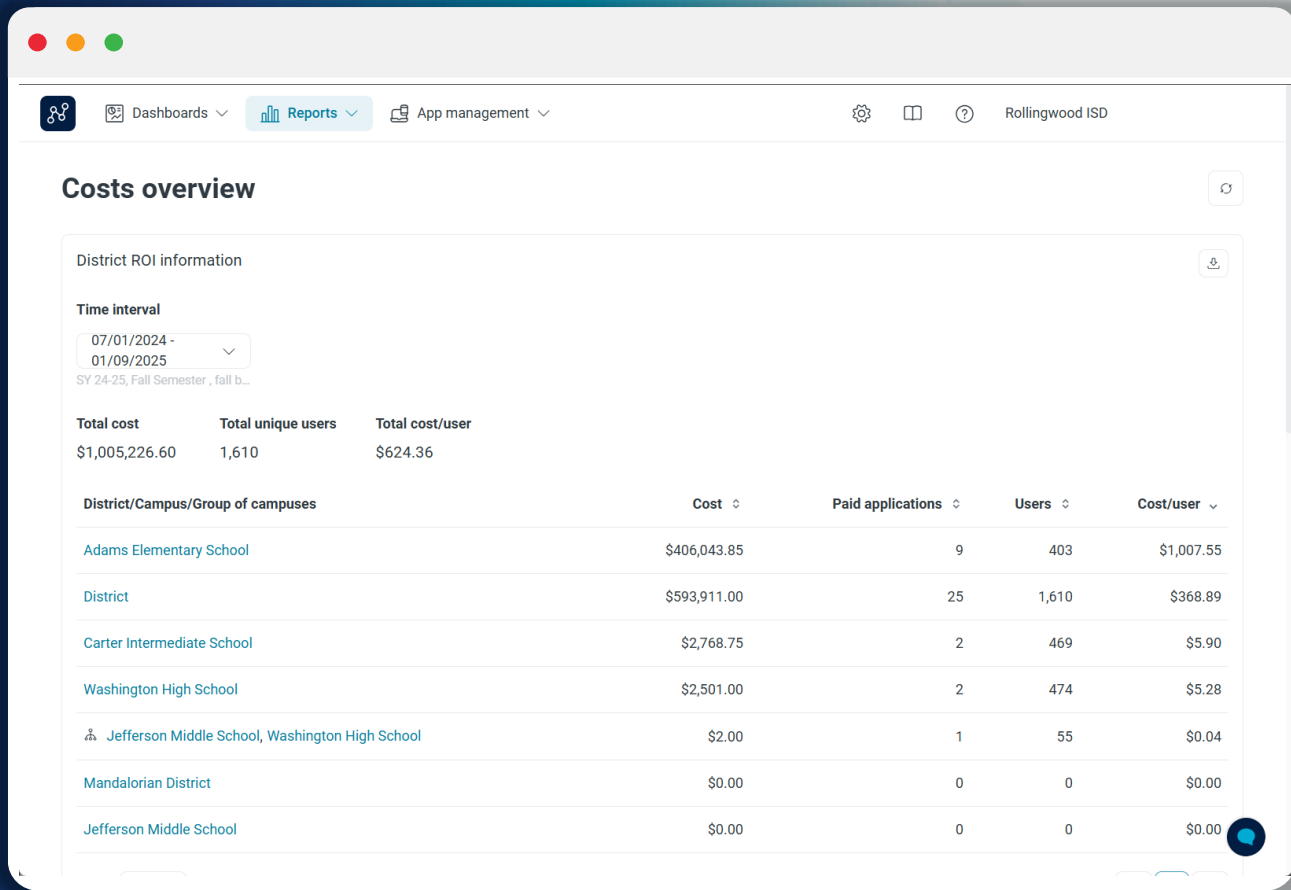
A complete picture of your ed-tech

See all activity

See app and device activity across all device and OS types – from the district down to the school, grade, class, and student level.

Get actionable insights

Create custom reports to help key departments track rogue apps, uncover top curricular tools, and more.



Costs overview

District ROI information

Time interval: 07/01/2024 - 01/09/2025
SY 24-25, Fall Semester, fall b...

Total cost	Total unique users	Total cost/user
\$1,005,226.60	1,610	\$624.36

District/Campus/Group of campuses	Cost	Paid applications	Users	Cost/user
Adams Elementary School	\$406,043.85	9	403	\$1,007.55
District	\$593,911.00	25	1,610	\$368.89
Carter Intermediate School	\$2,768.75	2	469	\$5.90
Washington High School	\$2,501.00	2	474	\$5.28
Jefferson Middle School, Washington High School	\$2.00	1	55	\$0.04
Mandalorian District	\$0.00	0	0	\$0.00
Jefferson Middle School	\$0.00	0	0	\$0.00

Optimize your budget

- Cut costs by identifying redundant and underutilized apps and using built-in, usage-based ROI analysis.
- Track spending and download accurate grant/ financial reports, better understand budget allocations, and improve collaboration.

★ Supports LCAP compliance




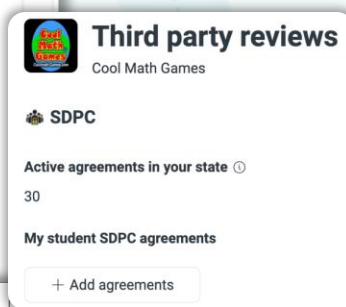
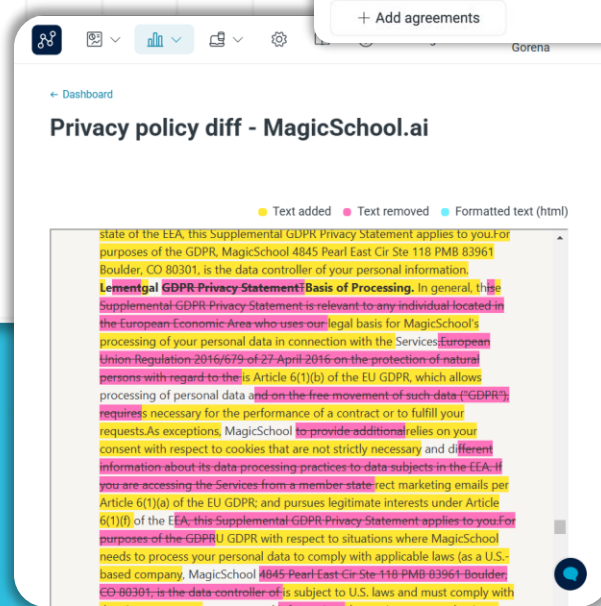
\$1.5M

saved by one district their first year with Insight

Status	Campus	Total licenses	Used	Not used	Unique active users
Over licensed	District	2,750	15	2,735	15




2-3 hrs.
saved
per app reviewed
for compliance

Ensure student data privacy

- Spot rogue apps that require student login and haven't been approved
- View 3rd party vetting from 1EdTech & SDPC
- Get real-time alerts with highlighted changes when privacy policies change
- ★ Complies with CCPA – and helps identify apps that don't

🏠 Dashboards 📊 Reports 📁 App management
⚙️ 📖 🔍 Cape Code Collaborative John Doe

Public lists management

Customize lists to meet your unique district requirements.

Staff app list Published

Share with school staff who need access to an updated list of approved apps and the option to request additional apps if needed.

⌵ ...

Public app list Published

Share on your district's public webpage for community members, parents, guardians, and others.

🌐 ...

Custom app list Disabled

Create a tailored app list to meet your unique needs, or maintain a secondary list for another use case.

...

Hidden apps

Make bulk changes to which apps are hidden from your public lists. Search search for any app with an approval status to see if it's included or hidden.

🔍 Search app

5 result(s)

- Apps
- In app 🔄 District Hidden from: Staff app list, Public app list ...
- Accubid Anywhere 🔄 District Hidden from: Staff app list, Public app list ...
- Clarity 🗣️ District Hidden from: All lists ...
- MS Office 365 🗣️ District
- Tekla Structural Designer 🔄 District

Public App Lists

Deliver needed transparency with ease by publishing Public App Lists.

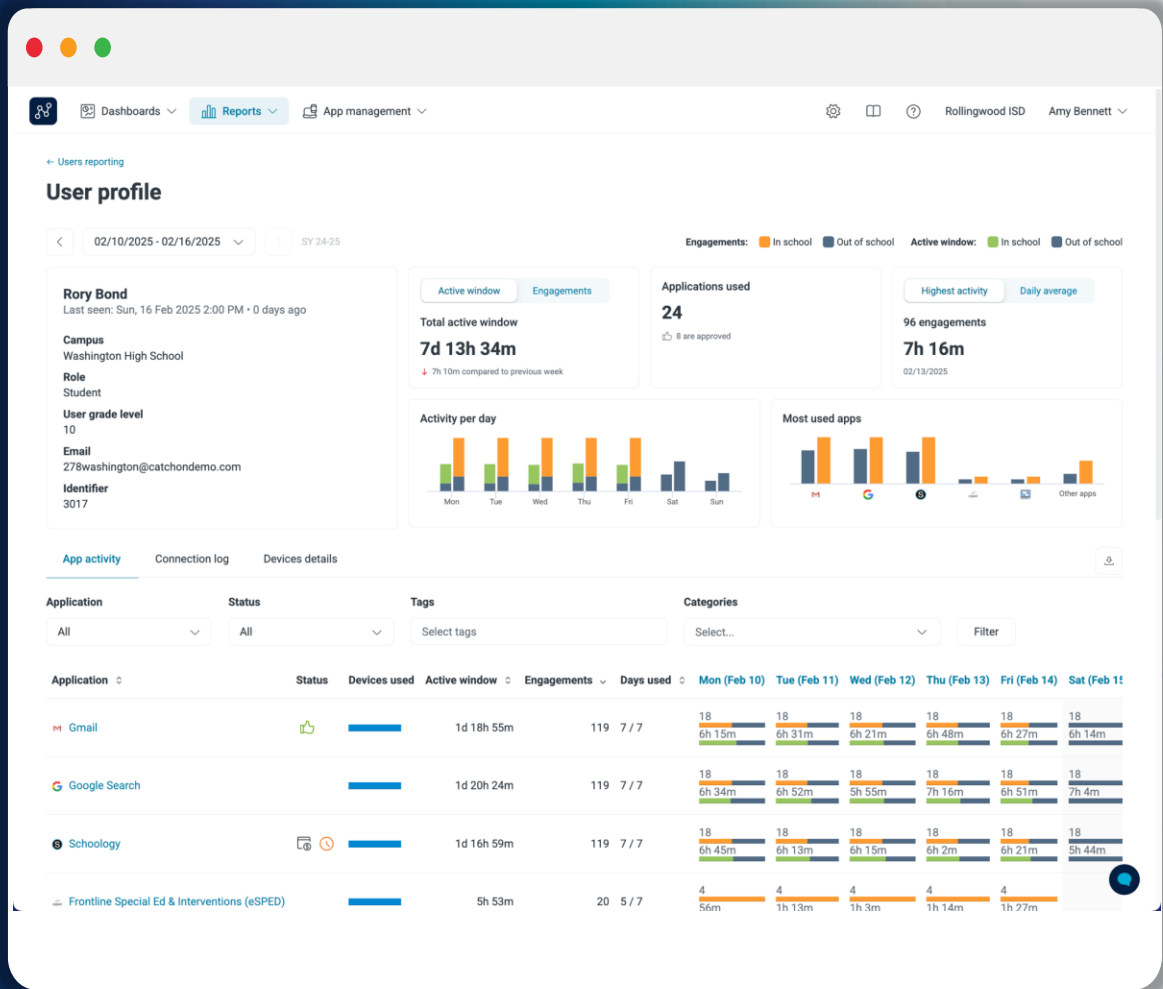
- Include the app details you choose
- Differentiate with internal and external lists

Visible application status

Approved
 In review
 Not approved

Visible information

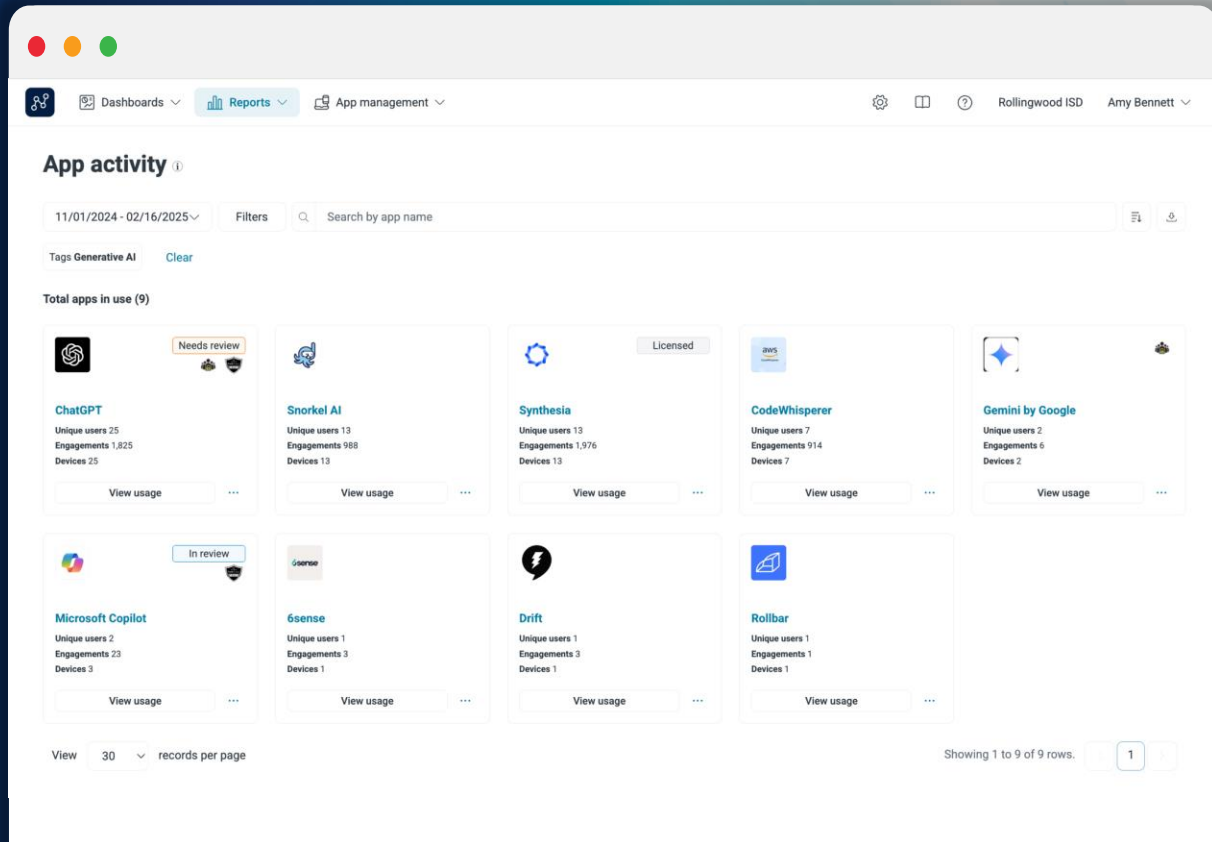
<input checked="" type="checkbox"/> Application name	<input checked="" type="checkbox"/> App website	<input checked="" type="checkbox"/> Approval comment
<input checked="" type="checkbox"/> Date approved	<input checked="" type="checkbox"/> Privacy policy	<input checked="" type="checkbox"/> Tags
<input checked="" type="checkbox"/> Expiration date	<input checked="" type="checkbox"/> Terms of service	<input checked="" type="checkbox"/> Categories
<input checked="" type="checkbox"/> Attachments	<input checked="" type="checkbox"/> Updated by	<input checked="" type="checkbox"/> SDPC agreements
<input checked="" type="checkbox"/> User grade levels	<input checked="" type="checkbox"/> Description	<input checked="" type="checkbox"/> 1EdTech Vetted
<input checked="" type="checkbox"/> Campuses	<input checked="" type="checkbox"/> My district description (District info)	<input checked="" type="checkbox"/> Pricing model



User-Level Insights

Understand student-level app usage with user profile reports

- View and control screen time
- Explore in and out of school activity

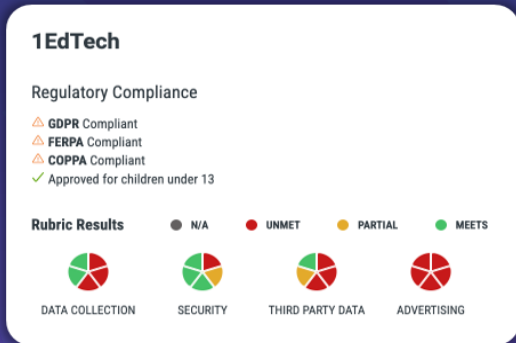


Uncover AI App Use

Gain visibility into usage of over 140 AI apps in use at your district
See who is using them, and for how long.

- See trends in AI app usage
- Review AI app privacy policies to ensure the safety of your students' data

Compliance Made Easy



1EdTech

Regulatory Compliance

- △ GDPR Compliant
- △ FERPA Compliant
- △ COPPA Compliant
- ✓ Approved for children under 13

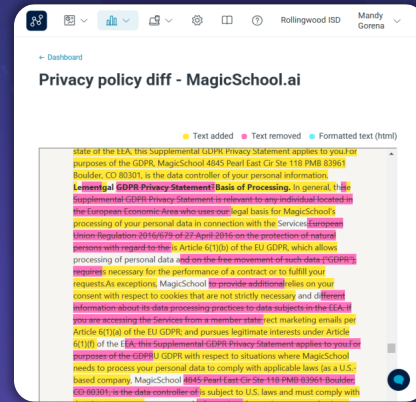
Rubric Results

- N/A
- UNMET
- PARTIAL
- MEETS

Category	Result
DATA COLLECTION	MEETS
SECURITY	MEETS
THIRD PARTY DATA	MEETS
ADVERTISING	MEETS

Student Data Privacy

Ensure apps meet standards required by CCPA and federal regulations



Rollingwood ISD Mandy Gorena

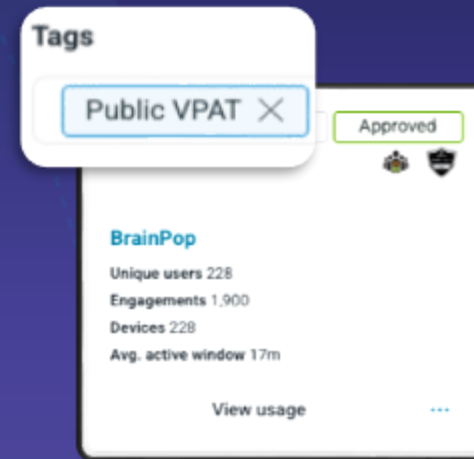
Privacy policy diff - MagicSchool.ai

Text added Text removed Formatted text (html)

State of the USA: this supplemental GDPR Privacy Statement applies to you for purposes of the GDPR. MagicSchool 4845 Pearl Lane Cir Ste 118 PMD 80901 Boulder, CO 80301, is the data controller of your personal information. **Legal Basis for Processing:** In general, the Supplemental GDPR Privacy Statement is relevant to any individual located in the European Economic Area who uses our legal basis for MagicSchool's processing of your personal data in connection with the Service: **European Union Regulation 2016/679 of 27 April 2016 on the protection of natural persons with regard to the processing of personal data and on the free movement of such data (GDPR) requires necessary for the performance of a contract or to fulfill your requests.** As exceptions, MagicSchool **to provide additional roles on your consent with respect to cookies that are not strictly necessary and different information about its data processing practices for data subjects in the EEA if you are accessing the Services from a member state that marketing emails per Article 6(1)(a) of the EU GDPR, and pursues legitimate interests under Article 6(1)(f) of the EU GDPR.** This Supplemental GDPR Privacy Statement applies to you for purposes of the GDPR. GDPR with respect to situations where MagicSchool needs to process your personal data to comply with applicable laws (as a U.S. based company, MagicSchool 4845 Pearl Lane Cir Ste 118 PMD 80901 Boulder CO 80301, is the data controller of its subject to U.S. laws and must comply with

Transparency

Meet requirements for transparency into resources and their policies



Tags

Public VPAT X Approved

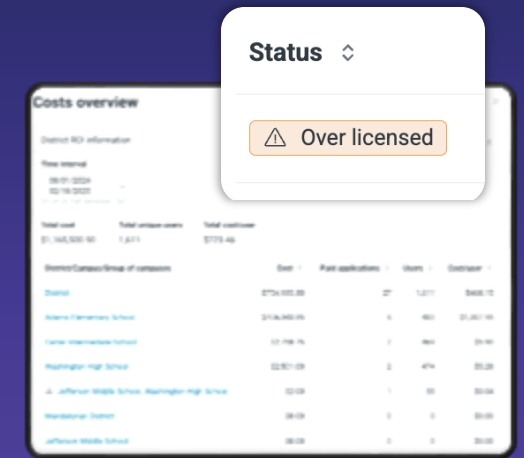
BrainPop

- Unique users 228
- Engagements 1,900
- Devices 228
- Avg. active window 17m

View usage

Accessibility

Ensure apps meet your accessibility standards with easy VPAT reporting



Costs overview

District ID information

Year started: 10/01/2024, 10/16/2022

Total cost: \$1,148,000.00, Total licenses: 7,813, Total cost per license: \$73.46

Selected Contact Group of licenses	Cost	Per seat/licenses	Users	Contract
District	\$750,000.00	27	1,071	\$698.75
Adams Elementary School	\$114,000.00	1	861	\$1,324.06
Carver Intermediate School	\$178,750.00	1	861	\$2,076.19
Washington High School	\$2,250.00	2	474	\$93.88
J. Jefferson Middle School, Washington High School	\$250.00	1	861	\$698.75
Washington District	\$800.00	1	1	\$800.00
Jefferson Middle School	\$800.00	1	1	\$800.00

Status: Over licensed

Accountability

Meet LCAP requirements with comprehensive activity visibility



Need a clearer view of your district's compliance and spending?
 Find student data privacy and compliance risks, cost-saving opportunities, and more at no cost.

Scan now for a free App Audit





NEW!

And part of the CITE Discount Program!



**Lightspeed
Signal™**

**Identify device,
network, and app
issues for connected
learning**

Built Based on Feedback from K-12 IT Leaders



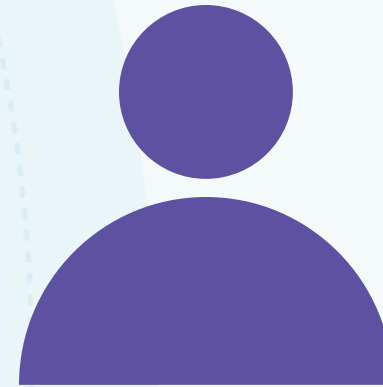
Time is our currency in IT. If we can save IT teams or teachers time, we've added real value.



Device inactivity speaks to the monetary piece. We're in a budget deficit.



I was on a 45-minute call trying to resolve an issue where a kid lost a device, took their sister's, and we had to figure it out from the serial number.



We need to see the health of our campus networks. The bad networks are actionable, and we're trying to fix them.





Lightspeed Signal™

Identify device, network, and
app issues for connected
learning



6.5 min/hr
of learning lost
due to tech issues



30%
of device TCO due
to maintenance



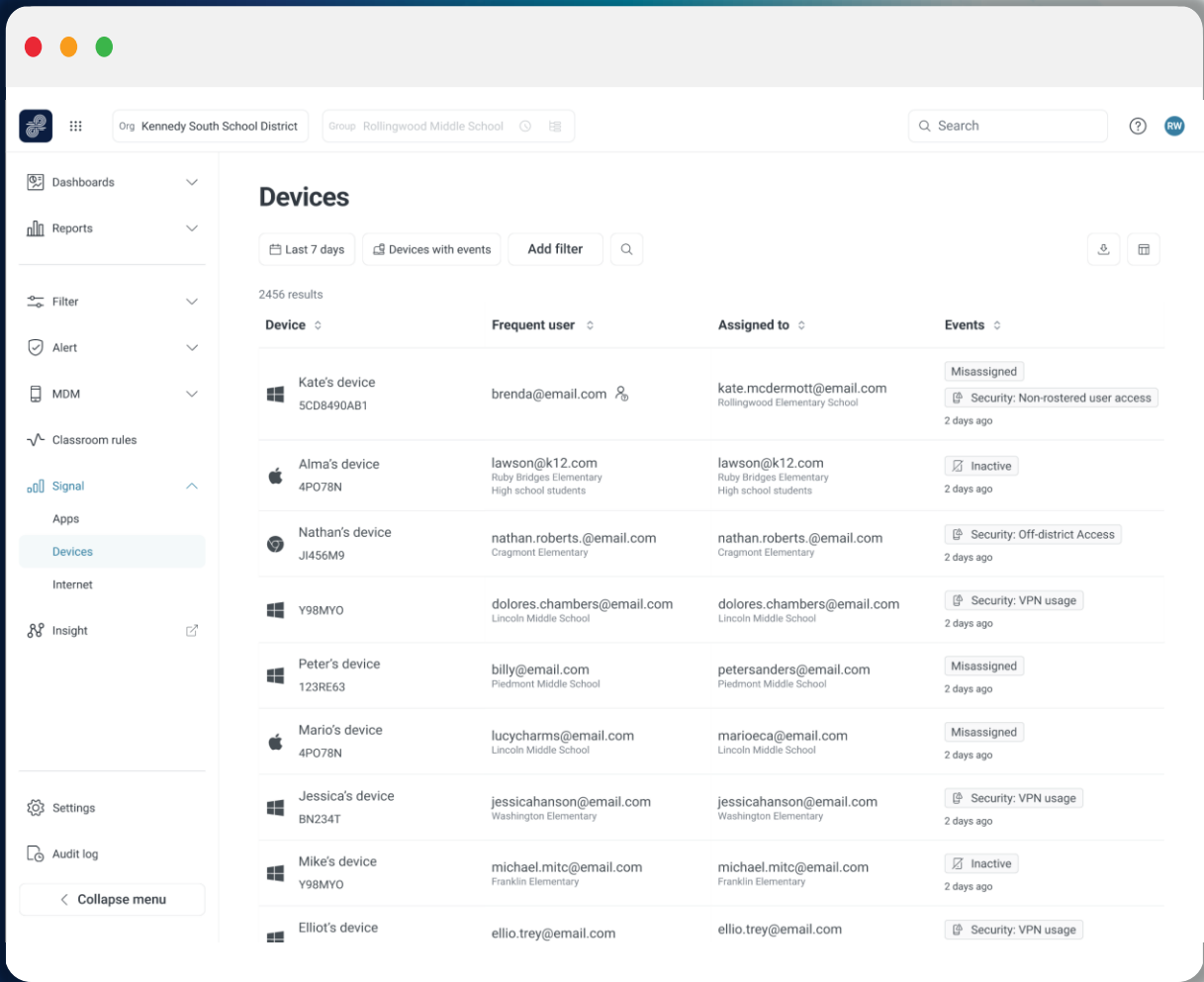
99%
more ed-tech now
than 2022

About Lightspeed Signal

- View device inventories, health, and users
- Manage internet strength to ensure home and school connectivity
- Get automated notifications when apps are down
- Keep students connected and unburden IT staff

Why choose Lightspeed

- Agent technology finds issues others cannot
- Consolidated insights at district and school levels
- Connected ecosystem allows for integrations
- Single management interface saves time and money



The screenshot shows the Lightspeed Signal web interface. The top navigation bar includes the organization name 'Kennedy South School District' and the group 'Rollingwood Middle School'. A search bar is present on the right. The left sidebar contains various navigation options: Dashboards, Reports, Filter, Alert, MDM, Classroom rules, Signal, Apps (with 'Devices' selected), Internet, Insight, Settings, and Audit log. The main content area is titled 'Devices' and shows 2456 results. It features a table with the following columns: Device, Frequent user, Assigned to, and Events. The table lists several devices with their respective users and assigned schools, along with event tags such as 'Misassigned', 'Security: Non-rostered user access', 'Inactive', and 'Security: VPN usage'.

Device	Frequent user	Assigned to	Events
Kate's device SCD8490AB1	brenda@email.com	kate.mcdermott@email.com Rollingwood Elementary School	Misassigned Security: Non-rostered user access 2 days ago
Alma's device 4P078N	lawson@k12.com Ruby Bridges Elementary High school students	lawson@k12.com Ruby Bridges Elementary High school students	Inactive 2 days ago
Nathan's device JI456M9	nathan.roberts.@email.com Cragmont Elementary	nathan.roberts.@email.com Cragmont Elementary	Security: Off-district Access 2 days ago
Y98MYO	dolores.chambers@email.com Lincoln Middle School	dolores.chambers@email.com Lincoln Middle School	Security: VPN usage 2 days ago
Peter's device 123RE63	billy@email.com Piedmont Middle School	petersanders@email.com Piedmont Middle School	Misassigned 2 days ago
Mario's device 4P078N	lucycharms@email.com Lincoln Middle School	marioeca@email.com Lincoln Middle School	Misassigned 2 days ago
Jessica's device BN234T	jessicahanson@email.com Washington Elementary	jessicahanson@email.com Washington Elementary	Security: VPN usage 2 days ago
Mike's device Y98MYO	michael.mtc@email.com Franklin Elementary	michael.mtc@email.com Franklin Elementary	Inactive 2 days ago
Elliot's device	ellio.trey@email.com	ellio.trey@email.com	Security: VPN usage

Device Health

Identify Security Risks

Detect access by non-rostered users, VPN usage, and unexpected device locations to mitigate risks.

Optimize Device Inventory

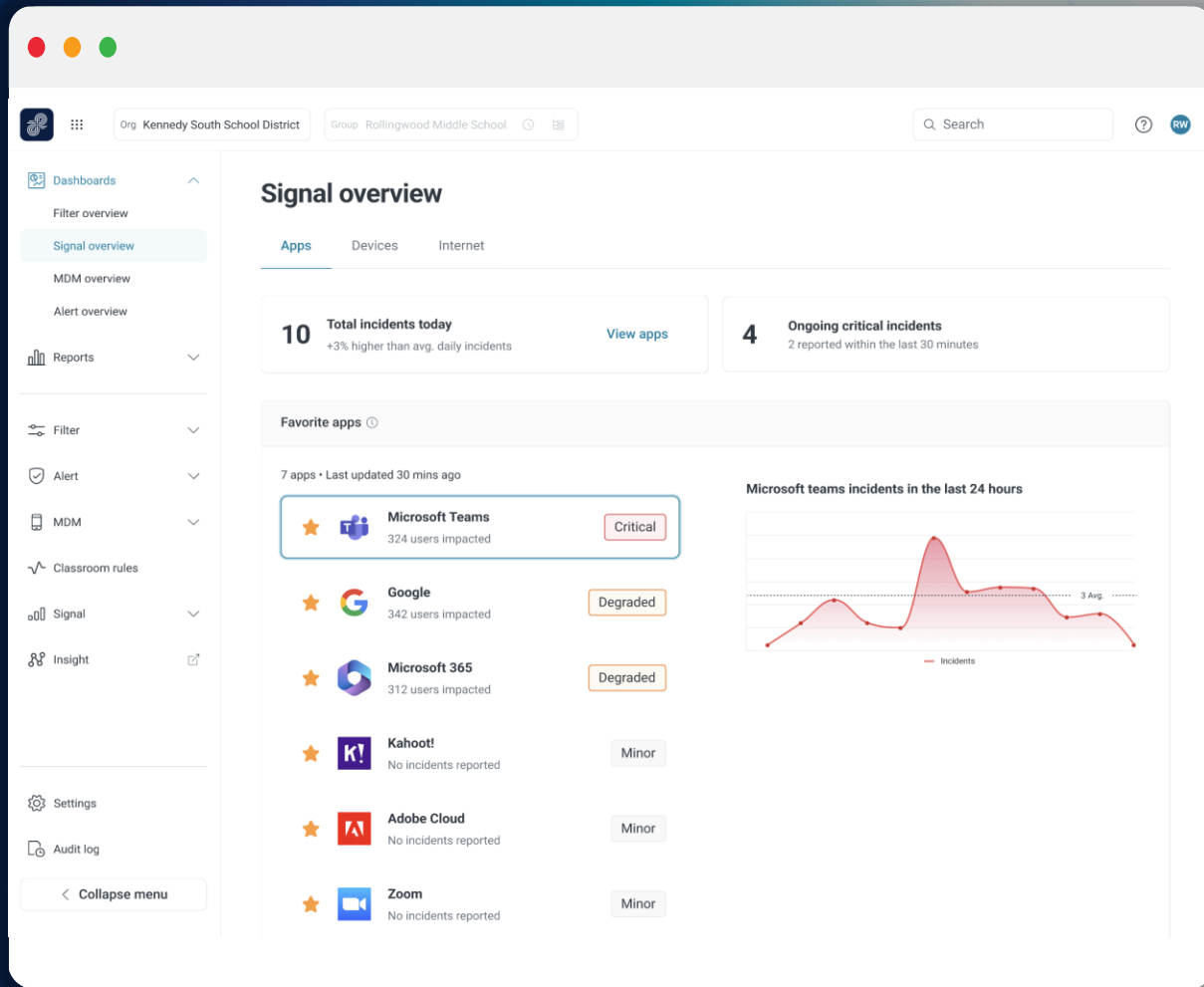
Identify inactive devices, share information with site admins, and reduce wasted resources.

Track User History

Ensure accurate tracking of devices to their primary users, especially in cases where devices are handed off informally or assigned incorrectly.

View Event History

Detailed tracking of past events on device to troubleshoot security, location, or user issues.



App Health

See Outage Details

Understand the outage reach, users and schools impacted, and error codes seen

Ensure App Reliability

Analyze app uptime, outage patterns, and latency to prevent recurring issues and meet SLAs.

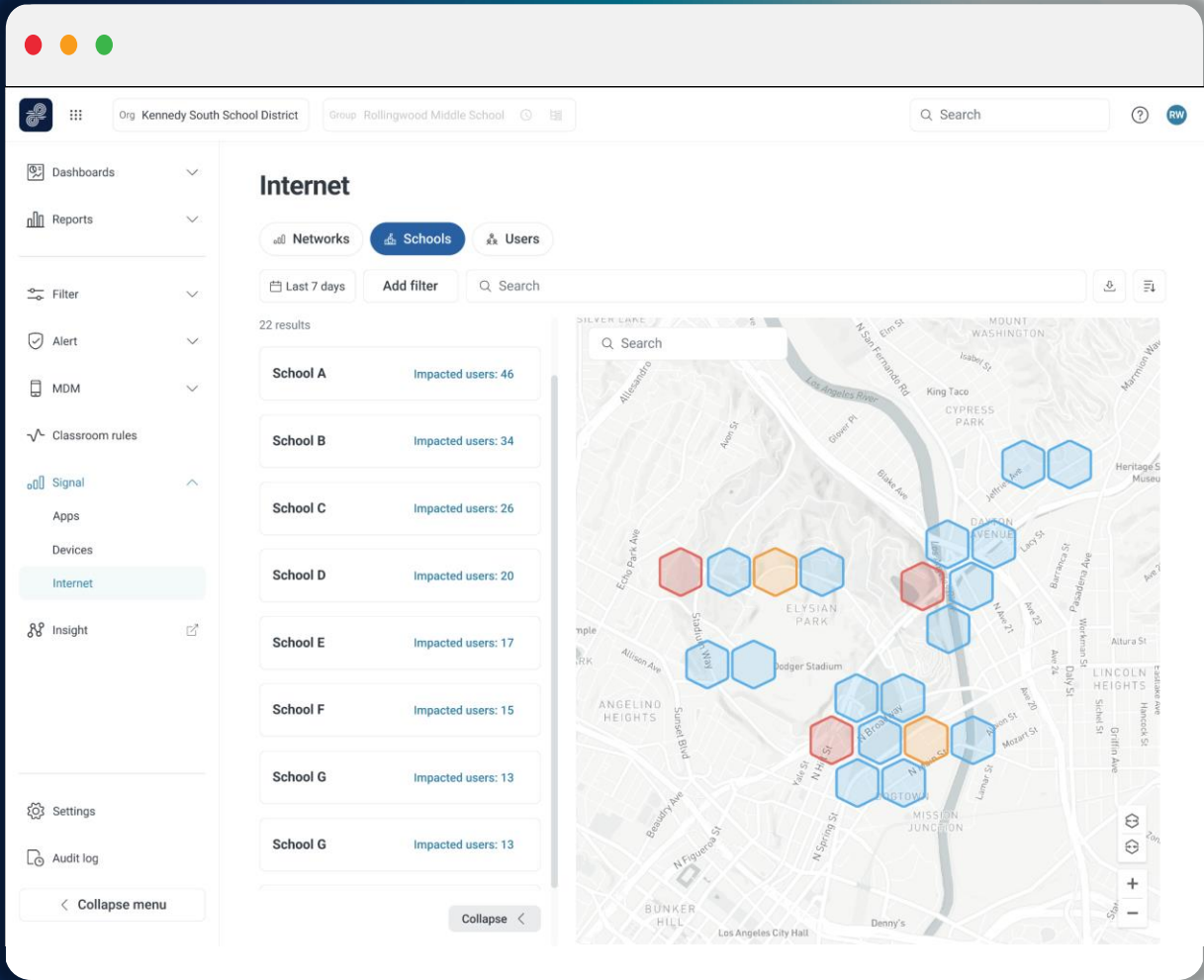
Prevent App Outage Impact

Get real-time alerts on app outages to keep users informed and resolve issues before they impact learning.

Set Custom Notifications

Reduce noise by ensuring the right people are alerted, improving resolution efficiency.

(Signal App Health requires Lightspeed Filter integration.)



Internet Health

Strengthen Internet Connectivity

Map network health, identify coverage gaps and offer solutions like private LTE or targeted hotspot distribution.

Provide On/Off Campus Support

Identify network problems occurring on campus versus at home.

Ensure Students Support

Proactively identify students having poor internet experiences so you can provide additional support.

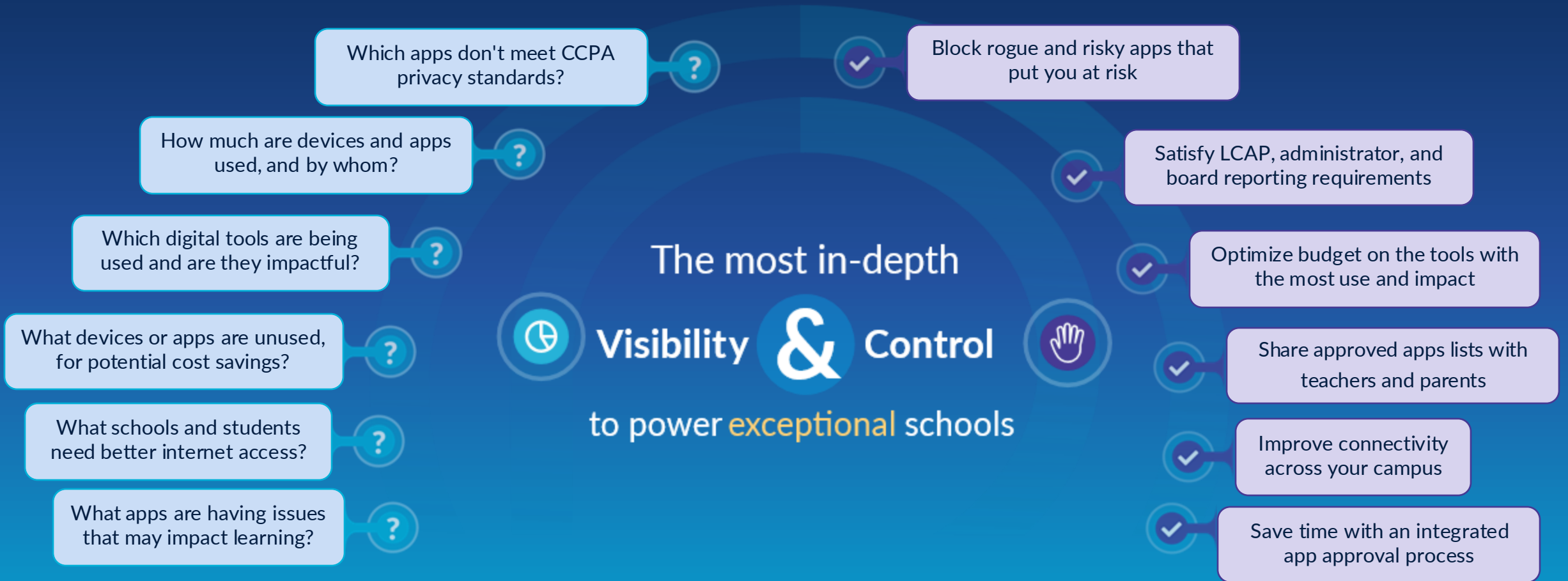
Easily Troubleshoot

See detailed historical data for each student for quick troubleshooting.



Sign up for a
demo today







Trusted by 27 of the top 50 U.S. school districts



23M
STUDENTS



15M
DEVICES



31K
SCHOOLS

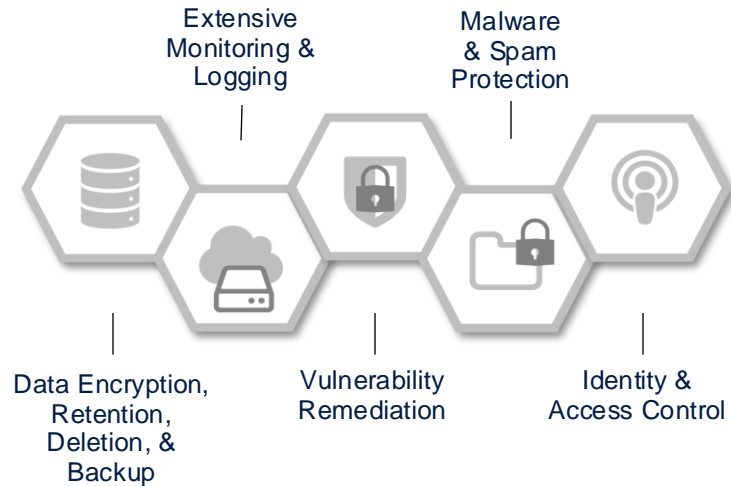


42
COUNTRIES



Security at the Forefront

Lightspeed adheres to proven, enterprise-class best practices for IT security



Committed to Data Privacy

Education is our mission. For over 25 years we have focused on building the best software to support kids and meet the unique needs of primary education.



FERPA
Family Educational Rights & Privacy Act



Student Data Privacy Consortium

Strategic Alliances That Matter

Lightspeed partners with key technology and device providers to support your district from 'day zero.' Our cloud-based solutions ensure security, reliability, and scalability.





Industry-leading solutions to solve complex challenges



Lightspeed Filter™

Block threats and distractions for secure, focused learning



Lightspeed Classroom™

Keep students engaged and focused on digital learning



Lightspeed Alert™

Build a proactive student safety culture with early identification and intervention



Lightspeed Insight™

Gain valuable insights into your district's technology investments



Lightspeed MDM™

Scalable, efficient & affording learning device management



Lightspeed Signal™

Identify device, network, and app issues for connected learning



Lightspeed StopIt™

Empower your community to speak up with anonymous reporting



CITE DISCOUNT PROGRAM

CITE districts save **60%**

on Lightspeed Insight *and* Lightspeed Signal!

<https://www.cite.org/lightspeed-discount-program>

CITE@lightspeedsystems.com

