



---

## Green to Grow

Chicago Recycling Ordinance  
CAA Lunch & Learn 12/7/16



# Chicago

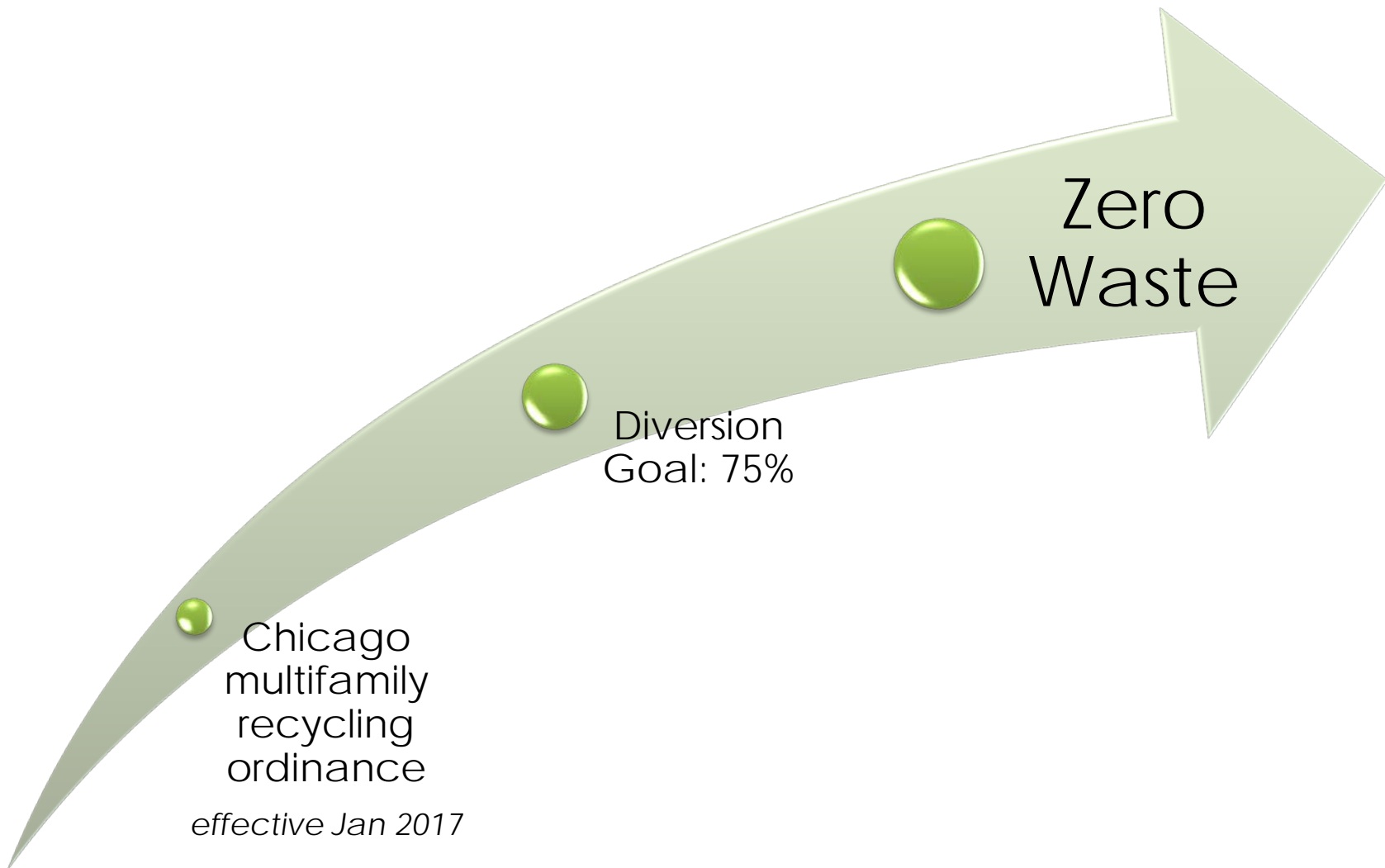
- 3<sup>rd</sup> largest city by population in US.
- More than 40 million visitors per year

## *Why Chicago? Why now?*

- 80% of renters nationwide value recycling as top 5 Community amenity- *NMHC/Kingsley Associates study 2016*
  - Residents expect to pay \$26.42 /month just for recycling!



# 2017 & Beyond...



# Recycling Compliance Checklist

Recycling Containers must be clearly marked

Designates Source Separated Recycling as the method to use

Permits single stream recycling (which means all permitted recycling material to be placed in the same recycling container

Non-recycling items are prohibited from being placed in recycling containers

Unlawful to remove any recyclable material from a recycling container located on a public way

Recycling containers display acceptable recycling material, emptied regularly and free from odor

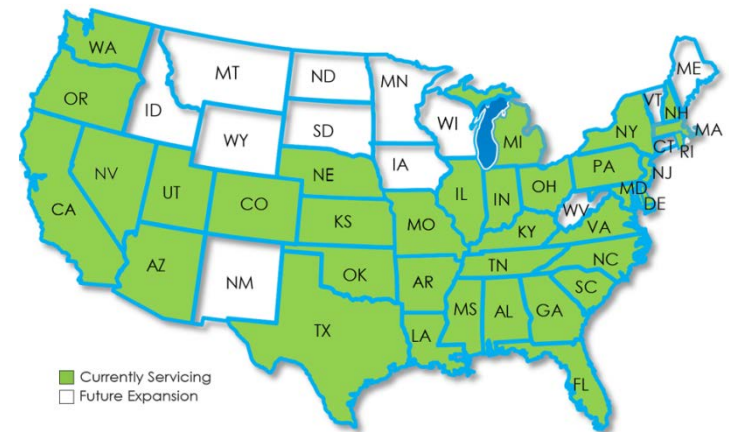
# Recycling Compliance Checklist

- Building owners must provide ongoing education to the residents about recycling
- Building owners must provide new tenants an acceptable recycling flier within 30 days of moving in
- Private haulers must source separate materials to be recycled
- Private haulers are responsible for reporting to the city
- Private haulers must submit an annual recycling recap

# Ready, Set,... Recycle!

Best practices for implementing a recycling program:

- Establish a trusted partner
- Provide education to residents & on-site staff
- Establish goals
- Promote ongoing green initiatives in the community
- Supply residents with the resources to make recycling easy
- **Keep it simple**



...Valet Waste is a trusted partner of nearly one million units nationwide

# Doorstep Recycling

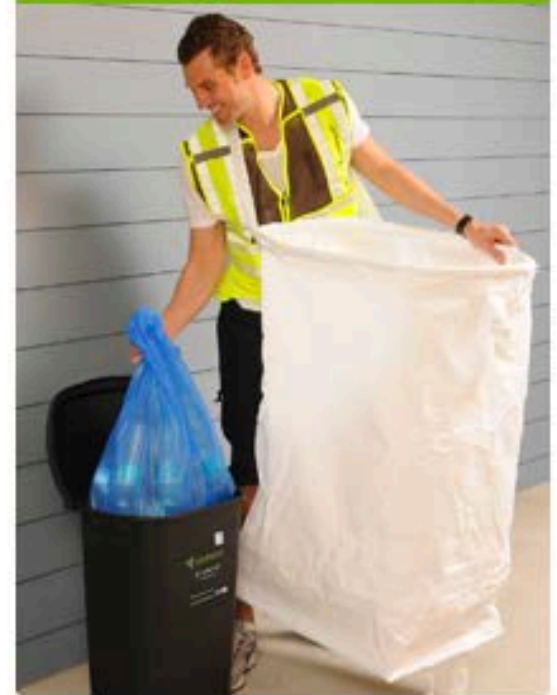
STEP 1



STEP 2



STEP 3



# Impact of recycling

An efficient doorstep recycling program will:

- **Reduce waste sent to landfills**
- Educate residents and on-site personnel
- Improve efficiency with on-site operations
- Enhance living environment for residents
- Enable market advantage leasing – competitive edge
- Attract growing market of eco-conscious renters



## *Proven Results*

**Implement Recycling, Improve Bottom Line!**



# The Valet Waste Difference

*“Education is the most powerful weapon which you can use to change the world”  
- Nelson Mandela*

- 5 nights per week doorstep recycling service
- Recycling education for residents & staff
- **Guaranteed compliance with city ordinance!**
- Innovative technology with daily reporting to community
- W2 employees with background screening

Recycling Guide 

---

### What To Recycle

Plastics	Glass	Paper	Metal
			
Bottles & Containers	Bottles & Jars	Mixed, Office, Cardboard Boxes & Cartons	Aluminum, Tin & Steel

---

### Do Not Include

- Food Waste
- Plastic Wrap
- Pizza Boxes
- Plastic Bags
- Needles or Films
- Paper Towels
- Styrofoam

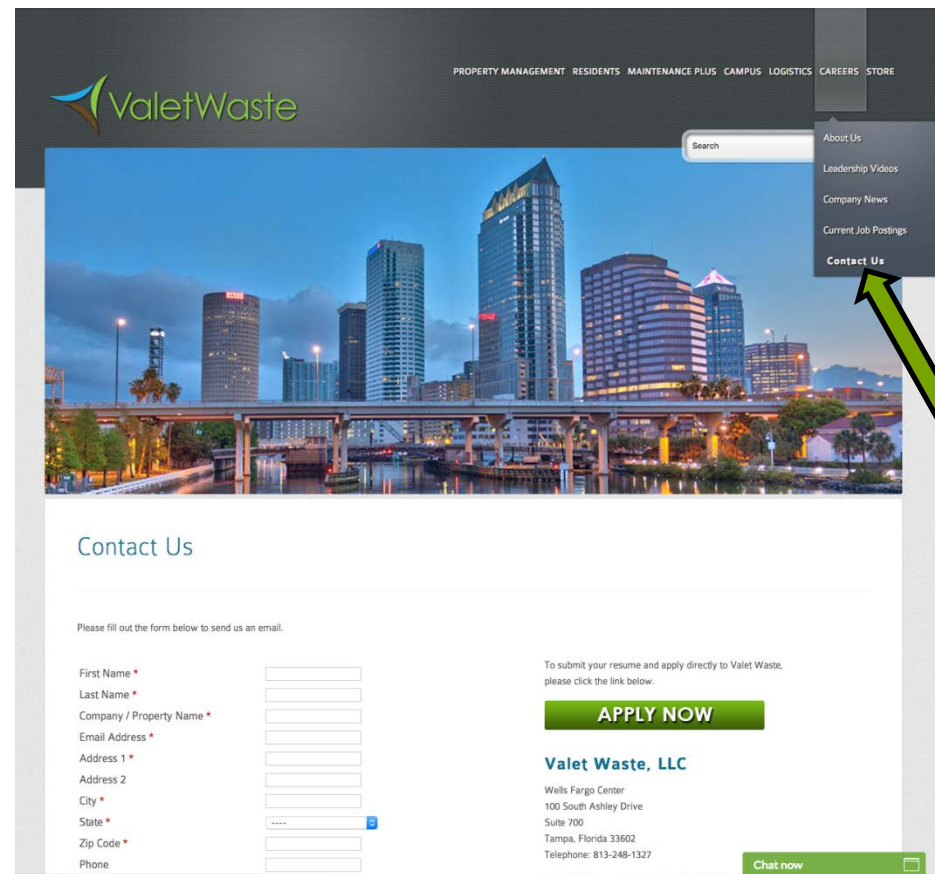
[www.valetwaste.com](http://www.valetwaste.com)



# Next Steps...

## ➤ Schedule on-site meeting

- Recycling compliance review
- Discuss doorstep recycling & waste program



The screenshot shows the ValetWaste website's 'Contact Us' page. The top navigation bar includes links for PROPERTY MANAGEMENT, RESIDENTS, MAINTENANCE PLUS, CAMPUS, LOGISTICS, CAREERS, and STORE. A search bar is located in the top right. A dropdown menu is open, with a green arrow pointing to the 'Contact Us' link. The main content area features a large image of a city skyline at night. Below the image, the 'Contact Us' heading is followed by a form with the following fields: First Name \*, Last Name \*, Company / Property Name \*, Email Address \*, Address 1 \*, Address 2, City \*, State \*, Zip Code \*, and Phone. To the right of the form, there is a text prompt: 'To submit your resume and apply directly to Valet Waste, please click the link below.' Below this prompt is a green 'APPLY NOW' button. The company name 'Valet Waste, LLC' is displayed, along with the address: Walls Fargo Center, 100 South Ashley Drive, Suite 700, Tampa, Florida 33602, and the telephone number: 813-248-1327. A 'Chat now' button is visible in the bottom right corner.

# Thank You!



*Follow Us:*

