



RODENT EXCLUSION PROCESS

I'VE GOT RODENTS! NOW WHAT?



STEP 1: HOW THEY GET IN

Before laying any traps, there is a full inspection inside *and* outside. They're looking for:

- Tiny gaps along foundation
- Broken/uncovered vents
- Gaps where pipes, wire or lines enter the house
- Roofline gaps, eaves or attic vents
- Signs inside unit: droppings, grease marks, chewed wood



STEP 2: SEAL IT UP!

It's time to seal the house up like a fortress by:

- Sealing gaps with metal mesh
- Installing steel vent covers
- Repairing roof gaps
- Sealing crawl spaces & garage
- Close gaps under doors



STEP 4: FORCE RATS OUT

An important part of the process is to force the rats out, not deeper inside the home. Once entry points are identified, there will be one-way exits where rats can go out but can't come back in. Traps are placed strategically both outside and inside the home.



STEP 3: SET TRAPS, NOT POISON

Snap traps are used and placed along known travel paths (rats like to hug walls!) and along the exterior perimeter to stop reinfestation. Traps are checked once a week and reset until no rodent activity is noted. This can take 4-6 weeks total.



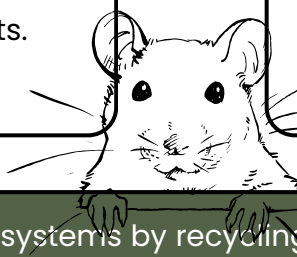
STEP 5: CLEANUP TIME

Once the rodent infestation is controlled, they will do a through cleanup and removal of rat droppings and nesting materials. They will disinfect affected areas and deodorize to remove scent trails that could attract new rats.



STEP 6: MONITORING

The exclusion company will continue to monitor the house and come by at least once per year to seal up any additional entry points. If at any time, rodent activity is detected, they will come back and go through the exclusion process again.



Did you know? Rats support ecosystems by recycling nutrients, dispersing seeds, aerating soil through burrowing, and sustaining predators—helping maintain resilient, balanced food webs.



RODENT EXCLUSION FAQ



PREPARING FOR RODENT EXCLUSION

WHAT DO I NEED TO DO TO PREPARE FOR THE TECHNICIAN?

Our technicians will be working in areas like the crawl space under the home and, where applicable, the attic. To help them do their work safely and efficiently, please make sure there is clear access to any attic or crawl-space entry points. This may mean temporarily moving personal items that are stored near these areas.

The technicians won't need constant access, but having these areas kept clear will make follow-up visits and trap checks much easier. Once the work is complete, you're welcome to put your belongings back where they were.

HOW LONG DOES IT TAKE TO GET RID OF THE RODENTS?

properly eradicating a rat infestation usually takes several weeks, not just a few days. Initial assessment, closing up entry points, and laying traps takes 1-2 days depending on size of home and number or difficulty of entry points. Monitoring and follow-up takes an additional 2-4 weeks. During this time traps are rechecked, activity is monitored, and adjustments are made if needed, to ensure all remaining rats are gone and no new ones are getting in.

WHAT ABOUT THE SAFETY OF MY PETS AND KIDS?

That's an important concern! The pest-control provider plans their work with children and pets in mind. Here's what you can generally expect:

- **Traps, not loose poisons:** Secure traps and no open bait are the preferred method.
- **Placement in restricted areas:** Traps are typically located in attics, crawl spaces, garages, or other non-living areas, not in places where kids or pets spend time.
- **Product usage:** When products are used, they are selected and applied according to label instructions and safety standards designed to minimize risk to people and animals.

WILL RATS COME UP AND INSIDE THE HOUSE TO ESCAPE THE TRAPS?

That's a very common worry, and the short, reassuring answer is no—rats don't rush into living spaces to escape traps. Traps are set along established runways in attics, crawl spaces, garages, or exterior areas. This means rats encounter traps in their normal hiding and movement zones, not inside living areas. They don't suddenly change behavior and "run through the house" because traps are present. A properly managed eradication plan is designed to quietly and safely resolve the issue without disrupting daily life.

