

Blowing Rock Construction Access and Detours Step 4A

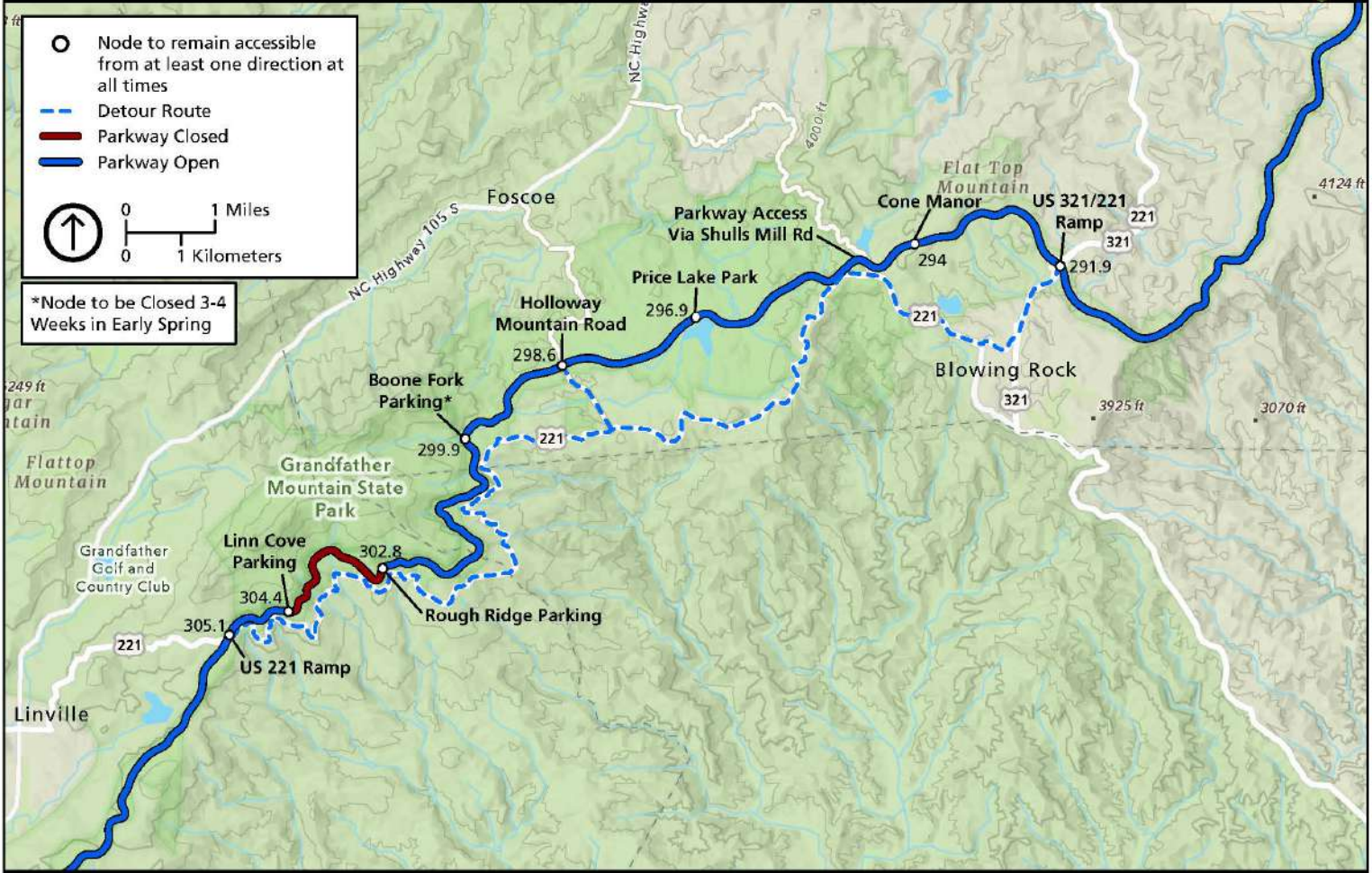
Blue Ridge Parkway
National Park Service
U.S. Department of the Interior



- Node to remain accessible from at least one direction at all times
- Detour Route
- Parkway Closed
- Parkway Open

0 1 Miles
0 1 Kilometers

*Node to be Closed 3-4 Weeks in Early Spring



Produced by: Blue Ridge Parkway GIS
Data Provided by: NPS

February 2026
Project #004