

Welcome



26th Annual

ASHE

The Association for the Study of Higher Education

CONFERENCE

November 15-18, 2001
Richmond, Virginia

President's Welcome

I have enjoyed attending ASHE meetings since I was a graduate student. Since its founding more than twenty-five years ago, ASHE has been committed to welcoming all who study higher education—those who are long-established and those who are newer to the field. I always look forward to our Annual Meeting as a time to greet colleagues I have known for many years, to become acquainted with new colleagues, and to stay abreast of research developments. For many of us, the meeting is a time to share what we have been working on and connect with others who may be current or possible collaborators. Indeed, this is a highlight of our year as scholars.

On behalf of all the members of ASHE, I extend thanks to Kate Shaw and the members of the Program Committee who have organized a very stimulating conference here in historic Richmond. As Kate mentions, please make note of some of the special sessions: the **Keynote Address by Judith Ramaley**, the Plenary Panel on Saturday morning on linkages between researchers, policy makers, and institutional decision makers, the Town Meeting on members' views of issues confronting ASHE as we move into the future, and the NCPI session on future research directions.

The Board joins me in extending best wishes to you as we participate in the collegial exchange that characterizes our ASHE Annual Meetings.

Ann E. Austin

Welcome from the Program Chair

Thanks to the hard work and creativity of the Program Committee and those who submitted proposals this year, we have put together a program that I think is remarkable in both the quality of the work represented, and the scope of topics to be considered. I invite you to sample the stimulating panels, presentations, and discussions that comprise this year's conference.

As you peruse the program, you will note that we have also included a number of special sessions. Several are designed to focus our attention on the future of ASHE as we move into the 21st century. In particular, I invite you to hear the remarks of our keynote speaker Dr. Judith Ramaley of the National Science Foundation and former President of Portland State University. We have also scheduled a Town Meeting to disseminate the results of the ASHE Task Force on the Future of the Membership, and a Saturday morning plenary on enhancing the impact of higher education research. A session designed to elicit members' opinions about the future of higher education research is also being hosted by NCPI on Friday morning.

Others sessions direct our attention to the role that the disciplines can play in helping us to examine the role of higher education in the broader society, and still others focus on cutting-edge issues in higher education, such as the impact of market forces and technology. And, following in the footsteps of Linda Eisenmann and last year's program committee, we are continuing with "Open Conversations" on under-represented areas in higher education research.

On behalf of the 2001 Program Committee, I encourage you to enjoy the conference. And I remind you to please use the evaluation form included in your packet as a way to register your opinions and influence future programming. Thank you for the opportunity to serve as your Program Chair.

Kate Shaw

TABLE OF CONTENTS: ASHE CONFERENCE

	<u>Page</u>
ASHE Forum on Public Policy & Higher Education	2
ASHE International Forum	4
List of ASHE Open Meetings & Receptions	7
Thursday: Concurrent Session A	9
Thursday: Concurrent Session B	10
Thursday, 4:30-6:00PM Plenary Session	11
Friday: Concurrent Session C	11
Friday: Concurrent Session D	12
Friday: Awards Luncheon	14
Friday: Concurrent Session E	14
Friday: Poster Session	15
Friday: Concurrent Session F	16
Friday: 5:45-7:00PM President's Address	18
Saturday: 8:00-9:30AM Plenary Session	18
Saturday: Concurrent Session G	18
Saturday: Dissertation of the Year	19
Saturday: ASHE Community Governance Meeting	19
Saturday: Concurrent Session H	19
Saturday: Informal Conversations	21
Saturday: Concurrent Session I	21
Sunday: Concurrent Session J	22
Sunday: Concurrent Session K	23
ASHE Proposal Reviewers	25
ASHE Award Winners	26
Bobby Wright Dissertation of the Year Awardees	28
Index of Participants	30
ASHE Board Members & Past Presidents	32
ASHE 2001 Program Committee Members	Back Cover

CORRECTIONS TO THE 2001 ASHE PROGRAM

Thursday, November 15th:

Concurrent Session B4: Symposium

The Quality of Faculty & Administrative Worklife: The Status of Research.

Location Salon C

Additional Presenters:

Linda Hagedorn, University of Southern California and Mimi Wolverton, University of Nevada - Las Vegas

Friday, November 16th:

Meeting: ASHE Task Force on Membership

1:15-2:15 PM Location: Rappahannock

Saturday, November 17th:

Meeting: Journal of Higher Education Advisory Board Meeting has been moved from Saturday, 12:15-1:15PM to Saturday, 6:30-8:30 PM Location: Boardroom

Concurrent Sessions:

Session G7: ASHE Town Meeting has been moved to Salon D

Session H7: Focused Dialogue: "Re-Remembering: Rethinking Separation and Student Persistence" CANCELLED

Session I8: Invited Session: Daryl Smith, Claremont Graduate School, will be representing the psychological perspective.

Sunday, November 18th:

Concurrent Sessions:

Session J4: Research/Scholarly Papers

Post-Tenure Review: What Matters to Faculty

Additional Presenter - Linda Johnsrud, University of Hawaii-Manoa

Session K6: Roundtables

How Might Quantitative Research Use Critical Theory? Lori Vogelgesang is at UCLA

Information as a Conduit to Institutional Change

Michelle Gonzales Bleza is at the University of Southern California

Additional Names: Georgia Bauman, Paz Maya Oliveres, University of Southern California

26th Annual
ASHE

The Association for the Study of Higher Education

Pre-Conference Programs

ASHE Forum on Public Policy & Higher Education

1:00PM, Wednesday, November 14th

through

11:50AM, Thursday, November 15th

AND

ASHE International Forum

10:00AM, Wednesday, November 14th

through

12:00PM, Thursday, November 15th

2001 ASHE Forum on Public Policy and Higher Education
Wednesday, November 14th & Thursday, November 15th
Crowne Plaza Hotel
Ballroom Salon A

WEDNESDAY

1:00-2:50PM
Welcome to the Forum
Invited Session

"Layers of Accountability in Higher Education: The Virginia Saga,"

Session Chair: Cynthia Burns, University of Virginia

Presenters:

- Phyllis Palmiero, State Council of Higher Education for Virginia
- Karl Schilling, State Council of Higher Education for Virginia
- Tod Massa, State Council of Higher Education for Virginia
- Fletcher Mangum, State Council of Higher Education for Virginia
- David Breneman, University of Virginia
- Edward Flippen(invited), Governor's Blue Ribbon Commission on Higher Education and Virginia Commonwealth University Board of Visitors
- State Senator, John H. Chichester (invited)

3:00-3:30PM
Research Paper

"What to do when 250 legislators show up on your doorstep and the refrigerator is empty: Responding to a joint legislative resolution to study time-to-degree,"

Session Chair: Donald Heller, University of Michigan

Authors:

- Mark Lafer, Pennsylvania Higher Education Assistance Agency
- Jason Popp, Pennsylvania Higher Education Assistance Agency
- Nancy Diamond, Pennsylvania State University
- Janelle Matesic, Pennsylvania State University
- Jairo Parada, Pennsylvania State University

3:40-5:10PM
Symposium

"The intersection of policy development and educational research in Australia: Practicalities, possibilities, and problems."

Session Chair: Patrick Terenzini, Pennsylvania State University

Presenters:

- Craig McInnis, University of Melbourne
- Michael Gallager, Australian Government
- William Tierney, University of Southern California

5:20-5:50PM
Research Paper

"The Illinois Articulation Initiative evaluation project."

Session Chair: Derrick Manns, Madonna University

Authors:

- Celina Sima, University of Illinois at Chicago
- Patricia Inman, University of Illinois at Chicago

Joint Reception with Graduate Student Policy Seminar
 6:00-7:00pm
 Omni Hotel Ballroom Foyer

THURSDAY

8:00 -9:30AM
Symposium

"College presidents and the education of teachers: school reform comes to the president's office"

Session Chair: Ami Zusman, University of California President's Office

Presenters:

- Patricia Maloney, American Council on Education
- Theresa Dozier, Virginia Commonwealth University
- Penelope Earley, American Association of Colleges for Teacher Education
- Donald Langenberg, University System of Maryland

(Public Policy Forum: Thursday)

- Frank Brush Murray, Teacher Education Accreditation Council and University of Delaware

**9:40-11:10AM
Symposium**

"Structural change in postsecondary governance: states as laboratories of political experiment"

Session chair: Carol Everly Floyd, Illinois Board of Higher Education

Presenters:

- David Leslie, College of William and Mary
- Kenneth Mortimer, University of Hawaii

- Richard Novak, Association of Governing Boards
- Lucy Hamilton-Duncan, University of North Florida
- Michael McLendon, Vanderbilt University

**11:20- 11:50AM
Business Meeting of ASHE Group on
Public Policy and Higher Education**

**2001 ASHE International Forum
Wednesday, November 14th & Thursday, November 15th
Omni Richmond Hotel**

Wednesday

10:00AM

**Welcome/Introduction: Gary Rhoades,
Chair, International Forum
Location: Shenandoah HJ**

10:15 - 11:15AM

**GLOObal, NATIONAL, and LoCAL Forces in
Higher Education
Location: Shenandoah HJ**

- Gregory Anderson, *Apartheid, racial identity, and the limits of political mobilization and democratic reform in South Africa: The case of the University of the Western Cape.*
- Simon Marginson and Gary Rhoades, *Beyond national states, markets and higher education institutions: A glonacal agency heuristic.*
- Geraldine Walker, *The democratization of higher education in Jamaica: The role of the University of the West Indies.*

11:30AM - 12:30PM

Research Paper Sessions

**(Track A) Global Forces and Locally Lived
Faculty Realities**

Location: Roanoke

- Ana Bracamontes, *The different realities of feminism: Feminist academics, and women in popular women's organizations in Mexico.*
- Svein Mothe, *Rationalizing social democrats: Neo-liberal policies and practices in Norwegian higher education.*

- Barbara Sporn, *Why Us?: Academic career models under reform in Austria.*

**(Track B) Student Development Studying
at Home and Abroad**

Location: Shenandoah HJ

- Sandra Beekhoven, *The impact of first year students' living situation on the integration process and study progress.*
- Robert Booker *Differences between applicants and non-applicants relevant to the decision to apply to study abroad.*
- Max Hewitt, *Cultural influences on learning strategies of final year undergraduate students at an Australian university.*
- Thomas Wortman, *Study abroad: Increasing openness to diversity.*

2:00 - 3:00PM

Symposia

**(Track A) The Changing Production of
Public and Private Goods in Higher
Education: A Comparative Perspective**

Location: Shenandoah HJ

Chair & Facilitator: Ken Kempner

- Dudley Doane and Brian Pusser, *The changing production of public and private goods in higher education in the U.S.*
- Simon Marginson, *The distribution of public and private goods in Australian higher education: A longitudinal case study.*

- Simon Marginson, *The distribution of public and private goods in Australian higher education: A longitudinal case study.*

Wednesday, International Forum

- Marcela Mollis, *Shifts in the provision of public and private goods in Argentinian higher education.*

- Imanol Ordorika, *Higher education and political change in Mexico: Private service or public right?*

(Track B) The Global Practice of Student Affairs and Student Services

Location: Roanoke

Chair & Facilitator: Dudley B. Woodard, Jr.,

- Claudio Marques, *The case of Brazil.*
- Jing Ma, *The case of China.*
- George McClellan, *The case of the U.S.*
- Enrique Ramos, *The case of Mexico.*
- Paul Wilcox, *The case of the U.K.*

**3:15 - 4:15PM
Symposia**

(Track A) Be Careful What you Wish for: Unanticipated Consequences of Increased Institutional Autonomy in the Developing World

Location: Shenandoah HJ

Chair & Discussion Leader: Ann Austin

- David Chapman, *Autonomy at cross-purposes: Higher education in Laos.*
- Gerry Postiglione, *Coping with autonomy in higher education in China.*
- Barbara Sporn, *Lessons from the move toward greater institutional autonomy in Europe.*

(Track B) Understanding Changes in Chinese Higher Education: Environment, Organization, and Content

Location: Roanoke

Chair & Facilitator: Zhengxu Wang

- Xin Wang, *An uneasy battle for general education: Institution's approach to curricular reform in Chinese higher education.*
- Zhengsu Wang and Marvin Peterson, *Reforming and developing a modernizing society: Understanding the social demands on Chinese higher education.*
- Fengquiao Yan, *Blurred boundary and interactive patterns of private-public higher education in China's transitional economy: A case study of affiliated private colleges.*

- Chunmei Zhao, *"Brain drain," "brain gain," or just "brain circulation"?: An emerging pattern of brain drain phenomenon of Chinese graduate students in America.*

4:30 - 5:45PM

Internationalization and Student Identity in a Global World

Location: Shenandoah HJ

- Gary Cruz and Andrea Hoplight Tapia, *Student organizational subcultures and computer technology: An international perspective.*
- David Meabon and Olga Rybalkina, *Internationalizing Higher Education programs through comparative education courses: A national perspective.*
- Jeong-eun Rhee, *Globalization, imperialism and foreign/migrant students in U.S. higher education.*
- Susan Talburt, *International education for what?*

5:45 - 6:00PM

**Wrapping up the day
Location: Shenandoah HJ**

6:30 - 8:00PM

**ASHE International Reception
Location: Potomac Foyer**

THURSDAY

8:00 - 9:00AM

Transferability of National Practices?

Location: Potomac G

- Janet Lawrence and Tatiana Suspitsina, *Professional development and innovation in NIS higher education.*
- Andrew Okolie, *Producing knowledge for sustainable development in Africa: Implications for higher education.*
- George Subotzky, *New modes of knowledge production and acquisition: Peril or promise for developing countries.*

Roundtable Papers

Location: Shenandoah HJ

- Regsuren Bat-Erdene, *Mongolian private higher education: Problems, issues, policies.*
- Christina Dokter, *On-line collaborative learning across cultures: What is the best model?*
- Josefina Quintero Corzo, *Teaching reflective action research in a public Colombian university.*
- Olga Rybalkina, *Student affairs models and approaches: Translating the concepts overseas.*

Monday, International Forum

- Lewis Jillings and Thomas Wortman, *Internationalizing the curriculum: Challenges in the new millennium.*
- Steve Young, *Twenty years of European Union involvement in higher education: A discussion of program establishment, legitimacy, and authority.*

9:15 - 10:15AM

Research Paper Sessions

(Track A) Publicly and Privately Linked Sectors of Higher Education:

International Perspectives

Location: Shenandoah HJ

- Ed Morgan, *Undergraduate academic degree programs, economic integration and standardization: A comparison of cases in Mexico and the United States.*
- Tony Morgan, Evgeni Kniazev, and Nadia Kulikova, *Extreme resource dependence: A case study of organizational adaptation in a Russian university.*
- Anita Friedman, *Open-systems theory and organizational transformation: Case studies of two new African and European universities.*

(Track B) Defining Academe's Autonomy and Function

Location: Potomac G

- Jan Currie, *Privatization and academic freedom in Australian universities.*
- Dot Finnegan, *Liberty of thought: An historical study of crisis in a Belgian university.*
- Tony Potts, *The formation of Australian politicians' attitudes to regional universities.*

10:30 - 11:30

GLOBAL, NATIONAL, and LOCAL Features of Student Movements

- Philip G. Altbach, *Student activism: The importance of perspective.*
- Alma Maldonado-Maldonado, *Student movements in Latin America: The cases of Argentina, Mexico, and Venezuela.*
- Rob Rhoads and Gary Rhoades, *Graduate student unionization: A critique of globalizing, corporate U.S. research universities.*

11:30 - 12 noon Business Meeting

Witness, among other things, the seating of the new Chair of the ASHE International Forum

That's all folks; you're on your own from here on out. :-)

Just don't forget to look for an international session in the general ASHE Program, **Global Dimensions of Organizational Transformation**, with papers by Peter Eckel, *A world apart?: Higher education transformation in the United States and South Africa*, John Levin, *The university colleges of British Columbia and the process of economic globalization*, and Jussi Valimaa and Marcela Mollis, *Social functions of evaluation compared: Analyzing Finnish and Argentinian higher education.*

PLEASE show your support for and interest in international issues by attending this session

OPEN MEETINGS & ASHE RECEPTIONS

Wednesday

5:00 – 9:30 PM
ASHE Board Meeting
Chair: Ann Austin, President
Boardroom

6:00 – 10:00 PM
Council for the Advancement of Higher Education Programs Meeting
Chair: Karen Card
Potomac FG

6:00 – 7:00 PM
Graduate Student Policy Seminar & Public Policy Forum Reception
James River Foyer

6:00 – 8:00 PM
International Forum Reception
Potomac Foyer

8:00 – 10:00 PM
Publications Committee Meeting
Chair: Mildred Garcia
Rappahannock

Thursday

8:00 AM – 12:00 PM
ASHE Board Meeting
Chair: Ann Austin
Boardroom

8:00 AM – 12:00 PM
Council for the Advancement of Higher Education Programs
Chair: Karen Card
Salon A

11:45 AM – 12:45 PM
Newcomer's Orientation
Convener: Jann Freed
Salon D

6:00 – 6:30 PM
Newcomers Reception
Salon AB

6:30 – 7:30 PM
Welcome Reception
James River Foyer

Thurs, cont.

7:30 – 9:00 PM
Council on Ethnic Participation Business Meeting (CEP)
Chair: Janet Guyden
Potomac G

9:00-10:30 PM
Committee on Ethnic Participation Reception
Salon D

Friday

7:00 – 8:15 AM
AERA-J Executive Committee Meeting
Shenandoah H

7:00 – 8:15 AM
ASHE/ERIC Advisory Board Meeting
Shenandoah J

7:00 – 8:15 AM
2002 Program Committee Meeting
Roanoke

7:00 – 8:15 AM
ASHE Reader Series Meeting
Potomac F

7:00 – 8:15 AM
Big 12 Higher Education Consortium Meeting
Salon A

Saturday

7:00 – 8:00 AM
Big 12 Higher Education Consortium Meeting
Rappahannock

11:15 AM – 12:15 PM
Salon D
ASHE Community Governance Meeting
Convener: Ann E. Austin

Sat, cont.

12:15 – 1:15PM
Council for the Study of Community Colleges (CSCC) Meeting
Roanoke

12:15 – 1:15PM
Review of Higher Education Board Meeting
Editor: Phillip Altbach
Boardroom

12:15 – 1:15PM
Graduate Student Luncheon & Business Meeting
Conveners: Joyce Raveling & Shederick McClendon
Salon C

12:15 – 1:15PM
Journal of Higher Education Advisory Board Meeting
"Closing" Room

5:30 – 6:30 PM
ASHE Bash Reception
Potomac EFG

Sunday

8:00 – 10:00 AM
ASHE BOARD MEETING
Boardroom

8:00 – 10:00 AM
2002 Program Committee Meeting
Rappahannock

26th Annual
ASHE

The Association for the Study of Higher Education

CONFERENCE PROGRAM

1:00PM, Thursday
November 15th, 2001

Through

11:30AM, Sunday
November 18th, 2001

ASHE Board Meeting Times & Locations:

Wednesday, November 14th, 5:00-9:30PM

Location: Boardroom

Thursday, November 15th, 8:00AM-12:00PM

Location: Boardroom

Sunday, November 18th, 8:00-10:00AM

Location: Boardroom

ASHE Community Governance Meeting Time & Location:

Saturday, November 17th, 11:15AM-12:15PM

Location: Salon D

THURSDAY, November 15th

1:00-2:30 PM

Concurrent Session A

A1. Research/Scholarly Papers

Historical Perspectives on Women and College Mission

Location: Salon A

Chair: Amy Wells, University of New Orleans
Discussant: Yvonna Lincoln, Texas A&M University

Philanthropy and Higher Education: The Post-War Case of Women's Continuing Education

- Linda Eisenmann, University of Massachusetts-Boston

"Lots of pep! Lots of steam! The Origins of "Mission Creep" in State Colleges

- Christine A. Ogren, University of Iowa

Reading the Hearts of Others: Researching the History of Academic Women's Intimate Relationship

- Kristen A. Renn, Michigan State University

A2. Research/Scholarly Papers

Post-Affirmative Action Studies

Location: Potomac E

Chair: Karen McClafferty, UCLA
Discussant: Brian Pusser, University of Virginia

First-Generation College Students: A National Profile

- Marisol Arredondo, California State Polytechnic University-Pomona

Opportunities at the Crossroads: Examining the Pathways to Success in California Public High Schools

- Robert T. Teranishi, Walter Allen, Danny Solorzano, Marguerite Bonous-Hammarth; UCLA

A Comparative Analysis of University Outreach in the Context of Anti-Affirmative Action Policies

- Lucretia Murphy, Britany Affolter-Caine, Amy J. Conger, Donald E. Heller; University of Michigan

A3. Research/Scholarly Papers

Institutional Influences on Students

Location: Salon D

Chair: Michelle Trudeau, University of Washington
Discussant: Sharon Fries-Britt, University of Maryland

Effects of Attending a Two-Year vs. Four-Year College on Learning Orientation

- Christopher Pierson, Ernest T. Pascarella, Gregory C. Wolniak; University of Iowa
- Lamont A. Flowers, University of Florida

Predictors of Institutional Commitment at Two-Year and Four-Year Institutions

- Linda C. Strauss, J. Fredericks Volkwein, Alberto F. Cabrera; Pennsylvania State University

Sponsored Research vs. Graduating Students in Public Research Universities

- Mikyong M. Kim, University of Missouri-Columbia; Gary Rhoades, Dudley B. Woodard; University of Arizona-Tucson

A4. Research/Scholarly Papers

Teaching and Learning: Effects on Students and Institutions

Location: Potomac G

Chair: Angela Hildyard, University of Toronto
Discussant: Virginia Lee, North Carolina State University

Faculty Norms Regarding Teaching at U.S. Service Academies

- Michael Gavlick, Vanderbilt University

The Effects of Time-Limitations and Peer Relationships on Adult Student Learning: A Causal Model

- Carol A. Lundberg, Azusa Pacific University

Understanding the Impact of Service Learning Pedagogy on Faculty Work

- Dean Pribbenow, University of Wisconsin-Madison

A5. Research/Scholarly Papers

Methods & Issues in Higher Education Research

Location: Salon B

Chair: Iola Ragins Smith, Morgan State University
Discussant: Doug Toma, University of Pennsylvania

Negotiating Differences of Opinion and Innovation in Collaboration

- Elizabeth G. Creamer, Virginia Tech

The Institutional-Student Level Conundrum: How Do Different Methods Affect Research Findings and Conclusions?

- Shouping Hu, Seton Hall University; George D. Kuh, Indiana University Bloomington

(Thursday, Concurrent Session A5)

*Is Online Survey Administration the Answer?
Findings from a National Study of Survey
Methodologies*

- Linda J. Sax, Shannon K. Gilmartin, Alyssa N. Bryant; UCLA

*Using Student Self-Reported Gains to Estimate
College Impact: A Cautionary Tale*

- Ernest T. Pascarella, University of Iowa

A6. Symposium

**The Social Role of Higher Education:
Administrative, Faculty and Student
Perspectives**

Location: Shenandoah HJ

- Kelly Ward, Oklahoma State University
- Barbara Holland, Indiana University Purdue University – Indianapolis
- Lori Vogelgesang, Robert A. Rhoads, UCLA
- Christine Cress, Portland State University
- James Hearn, University of Minnesota

A7. Symposium

**Performance Accountability in Higher
Education: Forms, Origins and Impacts**

Location: Salon C

- Kevin J. Dougherty, Lisa Petrides, Columbia University
- Joseph C. Burke, SUNY Albany
- F. King Alexander, Frankie Santos Laanan, University of Illinois

A8. Focused Dialogue

Reactions to Distance Education

Location: Rappahannock

- Lemuel Watson, Clemson University
- Lenoar Foster, University of Montana
- Beverly Bower, Florida State University
- Yolanda Robinson, Pepperdine University

**2:45-4:15 PM
Concurrent Session B**

B1. Research/Scholarly Papers
**Examining Opportunity Structure and
College Success**

Location: Salon A

Chair: Robert Teranishi, University of
Pennsylvania

Discussant: Erin McNamara Horvat, Temple
University

*Rethinking College Student Success: How Social
Class Influences the Integration of First-Year
Students*

- Amy A. Bergerson, University of Utah

*Examining Opportunities for Latinas in Higher
Education: Toward a College Opportunity
Framework*

- Kenneth P. Gonzalez, University of San Diego; Carla Stoner, San Jose State University; Jennifer Jovel, Stanford University

*What Social Know-How Do Colleges Require
and Can College Structure Reduce the Need For
It?*

- Regina J. Deil, Ann Pille, James E. Rosenbaum; Northwestern University

B2. Research/Scholarly Papers
**African American Administrators:
Recruitment and Retention**

Location: Potomac E

Chair: Ronyelle Bertrand, University of Illinois
at Urbana-Champaign

Discussant: Wynetta Lee, North Carolina State
University

*Black Women Senior Administrators in Higher
Education*

- Jocelyn L. Payne, Adrienne E Hyle; Oklahoma State University

*Retention of African American Administrators
in Predominantly White Institutions*

- Jerlando F. L. Jackson, University of Wisconsin-Madison

*Narrated Voices of African American Women in
Academe*

- Sharon L. Holmes, University of Alabama

B3. Research/Scholarly Papers
**Cyber Learning Environments: Student
and Faculty Experience**

Location: Salon D

Chair: Pearl G. Solomon, St. Thomas Aquinas
College

Discussant: James Palmer, Illinois State
University

*Cognitive Development and Distributed
Learning: A Theoretical Based On-Line Student
Self-Assessment*

- Lance C. Phillips, Dara D. Mlinek; University of Nebraska-Lincoln

*Can Interaction and Learning Thrive in a
Technologically Mediated Environment?*

- Marc R. Levis, Kristen J. McKinney; UCLA

*Faculty at the University of Phoenix: A Study of
Non-Traditional Roles*

- Kevin Kinser, State University of New York at Albany

Thursday, Concurrent Session B3

B4. Symposium

The Quality of Faculty and Administrative Worklife: The Status of the Research
Location: Salon C

- Linda Johnsrud, University of Hawaii at Manoa
- James Fredericks Volkwein, Pennsylvania State University
- Vicki Rosser, University of Missouri-Columbia

B5. Symposium

Sociology of Higher Education: An Evolving Field

Location: Shenandoah HJ

- Anthony Lising Antonio, Patricia J. Gumpert, Stanford University
- Burton R. Clark, Patricia McDonough, UCLA
- Sylvia Hurtado, Marvine Peterson, University of Michigan
- Gary Rhoades, University of Arizona

B6. Roundtables

Location: Salon B

Creating a New Research Agenda: Higher Education for the Public Good

- John Burkhardt, Kellogg Forum on Higher Education for the Public Good; Peter Eckel, American Council on Education

Reflection and the Use of Action Theories in a Higher Education and Student Affairs Course: Essential Tools for Professional Effectiveness

- Kimberly A. Kline, Edward P. St. John, Megan N. Moore, Richard N. Muthiah; Indiana University-Bloomington

B7. Focused Dialogue

The Band Played Dixie: Race and Liberal Consciousness at Ole Miss
Location: Rappahannock

- Nadine Cohodas, Journalist and Writer, Washington D.C.
- Kelly Ward, Oklahoma State University
- Susan Twombly, University of Kansas
- Doug Price, Tulsa Community College
- Len Foster, University of Montana

B8. Research/Scholarly Papers

The Global Market of Higher Education: Students as Commodities
Location: Potomac G

Chair: Linda Townzen, University of Texas, Arlington
Discussant: David Chapman, University of Minnesota

Immigrants in U.S. Colleges: What Contributes to Their Academic Success

- Mirtha Crisostomo, Emmanuel College; Jay R. Dee, University of Massachusetts-Boston

Mixing It Up: Graduate International Students' Socialization Patterns on an American Campus

- Andrea G. Trice, Purdue University

The Global Market in Foreign Higher Education: The Case of Australia

- Simon W. Marginson, Monash University

4:30-6:00PM
Plenary Session
Location: Salon CD

"Change as a Scholarly Act"
Dr. Judith A. Ramaley
National Science Foundation

6:00-6:30PM
NEWCOMERS RECEPTION
Location: Salon AB

6:30-7:30PM
ASHE WELCOME RECEPTION
Location: Foyer

7:30-9:00PM
COMMITTEE ON ETHNIC PARTICIPATION BUSINESS MEETING
Location: Potomac G

9:00-10:30PM
COMMITTEE ON ETHNIC PARTICIPATION RECEPTION
Location: Salon D

FRIDAY, November 16th

8:15-9:45 AM
Concurrent Session C

C1. Invited Session

The Marketization and Privatization of Higher Education
Location: Salon A

Moderator: Jack Schuster, Claremont Graduate University

- David Breneman, University of Virginia
- Sheila Slaughter, University of Arizona

Friday, Concurrent Session C

**C2. Research/Scholarly Papers
Faculty Diversity and Diverse Faculty Views**

Location: Salon B

Chair: KerryAnn O'Meara, University of Massachusetts, Amherst
Discussant: Ronald Opp, University of Toledo

How Faculty View Diversity: Disciplinary Differences in Faculty Views About Diversity in Higher Education

- Jeffrey F. Milem, Paul D. Umbach, University Maryland

Interrupting the Usual: Successful Strategies for Hiring Diverse Faculty

- Caroline S. Turner, Arizona State University; Daryl Smith, Sandra L. Richards, Nana Osei-Kofi; Claremont Graduate University

Faculty Perceptions of Graduate International Students: The Benefits and Challenges

- Andrea G. Trice, Purdue University

**C3. Research/Scholarly Papers
Access to Higher Education for Students of Color**

Location: Potomac E

Chair: Chris Knaus, University of Washington
Discussant: Deborah Faye Carter, Indiana University

Up Where We Belong: Mobility and Resilience of First-Generation Latinos in Higher Education

- Alexander Jun, University of Southern California

How African American Students' School Relationships Affect College Attendance

- George L. Wimberly, ACT

How Secondary Schools Structure Postsecondary Opportunities: Perspectives from Asian Americans Through Critical Race Theory and Social Capital

- Robert T. Teranishi, University of Pennsylvania

C4. Invited Session

Open Discussion: Identifying Postsecondary Education Research Priorities

Location: Potomac G

ASHE members are invited to contribute their perspectives regarding postsecondary research priorities in the coming decade.

- Facilitator: Joan S. Stark, University of Michigan

- Presider: Kate Shaw, Temple University,
- Patricia J. Gumport, National Center for Postsecondary Improvement, Stanford University

**C5. Research/Scholarly Papers
Student Learning Orientation**

Location: Salon D

Chair: Christine Ogren, University of Iowa
Discussant: Jeff Aper, University of Tennessee

The Development of Civic Values: Do Race, Class, and Gender Matter?

- Lori J. Vogelgesang, UCLA

Learning About Students to Enhance Student Learning

- Kristen L. Walker, UCLA

Effects of Intercollegiate Athletic Participation on Male Orientation Toward Learning

- Ernest T. Pascarella, Christopher T. Pierson, Gregory C. Wolniak, University of Iowa

**C6. Graduate Student Session
ASHE: From ABC to Ph.D.**

Location: Salon C

- Ann E. Austin
- James Antony
- Shederick McClendon
- Joyce Raveling

C7. Symposium

Getting Real: Representing Realities in Higher Education Research and Policy Studies

Location: Shenandoah J

- Yvonna S. Lincoln, Texas A&M University
- William Tierney, Julie Colyar University of Southern California
- Susan Talburt, Georgia State University
- Adrianna Kezar, University of Maryland
- Anna Neumann, Columbia University

C8. Focused Dialogue

Understanding and Interpreting Effect Sizes in Higher Education Research

Location: Shenandoah H

- John C. Hayek, Robert Gonyea, George Kuh; Indiana University

**10:00-11:30AM
Concurrent Session D**

**D1. Research/Scholarly Paper
Beyond Diversity and Affirmative Action:
New Perspectives**

Location: Salon A

Chair: Karen Kurotsuchi Inkelas, University of Maryland

Discussant: M. Christopher Brown II,
University of Illinois at Urbana-Champaign

*Affirmative Reaction: Towards Developmental
Equity in Education*

- Christopher S. Knaus, Debra Friedman,
University of Washington

*Examining How Facets of Development are
Interrelated: An Example From Intercultural
Competence*

- Patricia M. King, University of Michigan;
Marcia B. Baxter Magolda, Miami University
(Ohio)

*The Unbearable Lightness of Multiculturalism:
On "Cultural Diversity" and the College Campus*

- Samuel S. Lee, College of William and Mary

D2. Research/Scholarly Papers

**Transforming Higher Education: Profit-
Driven, Corporate-Sponsored
Location: Salon B**

Chair: Karen L. Bacig, University of Minnesota
Discussant: Gary Rhoades, University of Arizona

*Managing Innovation: Report of a National
Survey of University-Industry Research Centers*

- William R. Tash, Gerald J. Stahler, Temple
University; Nancy Diamond, Pennsylvania
State University

*The Growing Phenomenon of Outsourcing: A
Consideration of Factors That Have Led to Its
Increases On Campus*

- Mark Garrett, University of Michigan

*University Transformations: An Analysis of
Inter-Sectoral Convergence*

- Patricia J. Gumport, Stuart K. Snyderman,
Stanford University

D3. Symposium: Policy Pre-Conference Session

**Studying Access: Identifying the Most
Important Barriers to Higher Education
Location: Rappahannock**

Chair: Jacqueline King, American Council on
Education

- Clifford Adelman, U.S. Department of
Education
- James Hearn, University of Minnesota
- Donald Heller, University of Michigan

D4. Research/Scholarly Papers Effects of College Major Location: Potomac G

Chair: Jeff Aper, University of Tennessee

Discussant: Carolyn J. Thompson, University of
Missouri-Kansas City

*Post-Baccalaureate Wage Growth Within Four
Years of Graduation: The Effects of College
Major, Quality, and Performance*

- Scott L. Thomas, University of Georgia;
Liang Zhang, University of Arizona

*Academic Major Selection of College Students:
Psychosocial Correlates of Decision Certainty*

- Claire Bienvenu, Chad D. Ellet; Louisiana
State University

*Career Decisions and Perspectives of Future
Science Teachers: The Influence of
Undergraduate Experiences and Environments*

- R. Dean Gerdeman, UCLA

D5. Symposium

**Parental Guidance Suggested: Family
Involvement in College Preparation
Programs**

Location: Shenandoah H

- William G. Tierney, Julia Colyar, Laura
Perna; University of Southern California
- Marvin Titus, University of Maryland
- Michelle G. Knight, Columbia University
- Laura Rendon, Arizona State University

D6. Symposium

**Limitations of Probabilistic Research in
the Study of College Students**

Location: Shenandoah J

- Frances K. Stage, New York University
- Sylvia Hurtado, University of Michigan
- John Braxton, Vanderbilt University
- Edward P. St. John, Indiana University

D7. Research/Scholarly Papers Mapping the Community College Professoriate

Location: Potomac E

Chair: Julie A. Caplow, University of Missouri
Discussant: Beverly Bower, Florida State
University

*Can You Teach These Students: Policies,
Practices, and Values That Drive the Faculty
Labor Market and Hiring Process in
Community College*

- Susan Twombly, University of Kansas

*The Status of Women and Minorities Among
Community College Faculty*

- Laura W. Perna, Rachel S. Permuth;
University of Maryland

Friday Concurrent Session D77

The Development of the Community College Professoriate: Findings From a National Study

- Charles L. Outcalt, UCLA

An Examination of Full-time and Part-time Community College Faculty's Views of Their Academic Work

- Duane Akroyd, North Carolina State University

D8. Focused Dialogue

The Trajectory of Philanthropy in Higher Education: Implications for Research

Location: Roanoke

- Peter Eckel, American Council on Education
- Betty Overton, W.K. Kellogg Foundation
- Robert Dickeson, Lumina Foundation for Education
- Adrianna Kezar, University of Maryland

Friday, 11:45AM-1:15PM

Awards Luncheon

Location: Salon CD

(Reservation Required)

**1:30-3:00 PM
Concurrent Session E**

**E1. Research/Scholarly Papers
Orientation and Socialization of Graduate Students**

Location: Salon A

Chair: James Coaxum, Rowan University
Discussant: Chris M. Golde, Carnegie Foundation for the Advancement of Teaching

Reproduction or Expansion in Doctoral Education: A Longitudinal Exploration of Doctoral Program Orientation

- Tina M. R. Falkner, Melissa S. Anderson; University of Minnesota

Pathways to the Professoriate: Construction a Personal Model of Self-as-Faculty

- L. Earle Reybold, University of Texas at San Antonio

Tangles in the Tapestry: Cultural Barriers to Graduate Student Unionization

- Tracy M. Davis, Amy Fann, Karen A. Kim, Jenny J. Lee, Leticia Oseguera, Robert A. Rhoads; UCLA

In Pursuit of the Ed.D.: Helping A.B.D. Students Move Toward Degree Completion

- Berta Vigil Laden, University of Toronto, OISE

**E2. Research/Scholarly Papers
Curriculum and Assessment Issues in Education for the Professions**

Location: Salon B

Chair: Nuria M. Cuevas, Norfolk State University
Discussant: Cliff Conrad, University of Wisconsin-Madison

A Qualitative Study of Six Medical Students in a Problem-Based Curriculum: Toward a Situated Model of Self-Regulation

- Dorothy Evensen, Penn State University

Accounting Education in Crisis: The Association of Learning Strategies and Assessment in the Evaluation and Reform of Higher Education

- Max R. Hewitt, University of New South Wales

The Disappearing Teacher: A Survey of Former Tennessee Public Teachers

- Russ Deaton, Greg Schultz; Tennessee Higher Education Commission

Job Competencies and the Curriculum: An Inquiry into Emotional Intelligence in Graduate Professional Education

- Audrey J. Jaeger, North Carolina State University

**E3. Research/Scholarly Papers
Policy and Program History in Higher Education**

Location: Potomac E

Chair: Greg Dubrow, University of Pennsylvania
Discussant: John Thelin, University of Kentucky

Exploring the Roots of Federal Language on Discrimination: The 1947 President's Commission on Higher Education

- Philo Hutcheson, Georgia State University

Between the President and the Faculty: The Origins of the Office of the Provost

- Jana Nidiffer, Timothy Reese Cain; University of Michigan

The 1944 GI Bill and the Rise of Student Psychological Services in Higher Education

- Christopher P. Loss, University of Virginia

Undergraduate Experiences of American Rhodes Scholars: Historical, Institutional, and Career Effects

Poster Session & Coffee Break

- Karen D. Arnold, Ted I. K. Youn; Boston College

E4. Symposium

Equity for Whom? Equity Issues Facing the Contemporary Community College

Location: Potomac G

- Barbara Townsend, University of Missouri-Columbia
- Kevin J. Dougherty, Columbia University
- Kathleen Shaw, Temple University

E5. Symposium

Restructuring of Academic Work in the 1990s: Analyses of the 1999 National Study of Postsecondary Faculty

Location: Shenandoah H

- Jack H. Schuster, Claremont Graduate University
- Martin J. Finkelstein, Seton Hall University
- Carol Frances, Claremont Graduate University
- Craig McInnis, University of Melbourne
- Gary Rhoades, University of Arizona

E6. Roundtables

Location: Rappahannock

Today's American Indian/Alaska Natives: Why They Are the Way They Are

- Charles Colbert, Laura I. Rendon, Joseph J. Saggio, Dawn Tato; Arizona State University

Assessing the Ambiguous: Strategies for Examining and Understanding Campus Climate

- Marisol Arredondo, California State Polytechnic University, Pomona; Christine M. Cress, Portland State University

E7. Focused Dialogue

Higher Education Governance: New Perspectives on Research and Practice

Location: Roanoke

- Merrill Schwartz, Association of Governing Boards of Universities and Colleges
- David Breneman, University of Virginia
- Brian Pusser, University of Virginia
- Sheila Slaughter, University of Arizona

Poster Session & Coffee Break

3:00-4:00 PM

Location: Salon CD

Tapping the Motivations Behind HBCU Alumni Giving: A Work in Progress

- Marybeth Gasman, Georgia State University

Contradicting Predictions for Service Learning Engagement: Why Some Faculty Do and Don't

- Lynn E. Willenbrock, University of Massachusetts, Boston

Perceptions of Technical Competence Among First and Second Year Students Participating in a Mandatory Computer Purchase Program

- Darla J. Twale, Molly Schaller; University of Dayton

Establishing a "Sense of Space" within Academic Work Environments: Faculty Constructions of Institutional Fit and Resulting Implications for Professional Vitality and Institutional Commitment

- Jennifer A. Lindholm, UCLA

Activism Among Feminist Academics: Professionalized Activism and Prestige

- Jennifer L. Hart, University of Arizona

Reducing Time to the Bachelor's Degree

- Alton L. Taylor, Dudley J. Doane, University of Virginia

The Impact of First-Generation College Student Status on Choice of Academic Major and Future Aspirations: A Predictive Model

- Sheril R. Smith, Georgia State University

The Nature of a Student Learning Community of Practice in a Student Affairs Organization

- Scott F. Smith, The Ohio State University

Technology in the Classroom: The Experiences of Minority Business Students

- Liliana Mina, Michigan State University

Transitions Between Tiers in U.S. News and World Report Rankings of Colleges and Universities

- Dennis R. Ridley, E. Charmaine Berina, Virginia Wesleyan College; Nuria Cuevas, Norfolk State University

A Study of Rural Community Colleges' Collaborative Practices, as Compared with Those Used by Urban and Suburban Counterpart Institutions

- Dmitry A. Suspitsin, Pennsylvania State University

Service Learning: An Assessment Plan for Student Outcomes

- Marilee J. Bresciani, Caryn M. Sabourin, North Carolina State University

(Friday Poster Session)

The Experiences of Women College Presidents: An Oral History

- Michelle O. Rosynsky, Douglass College, Rutgers University

Faculty Member Responses to Multiple Organizational Identities

- Judy M. Deshotels, University of Maryland, College Park

Higher Education "Start-Ups": Zero-History Administrative Teams in New and Merged Institutions

- Jay R. Dee, Susan Dole, Joanne Dreher, Rick Gifford, Lloyd Sheldon Johnson, Chuck Phair, Pat Shay, and Daniel Seitz, University of Massachusetts, Boston

Persistence of First Generation, Adult, and Low Income Latino Students and College Culture

- Andrew Sund, St. Augustine College

Comparing Faculty Cultures Across Academic Disciplines

- Jenny J. Lee, UCLA

Learning Styles, Temperaments, and Characteristics as Determinants of Student Achievement

- Teresa A. LeSage, University of Houston-Victoria; Jon E. Travis, Texas A&M University-Commerce

Postsecondary Opportunity and Choice: Influences on the Attendance Decisions of Minnesota Students

- Karen Zentner Bacig, James C. Hearn, University of Minnesota, Twin Cities; Robert Poch, Minnesota Higher Education Services Office

Graduate Student Experiences: Making Meaning in the Curricula of Professional Preparation Programs

- Lynn Swaner, Teachers College, Columbia University

The Effects of Student Expectations on Adjustment During the Freshman Year

- Jennifer Rinella Keup, UCLA

Strategic Planning in Higher Education: The Lived Experience of Deans at a Public Research University

- Leanne M. Baylor, University of Minnesota

Assessing Multicultural Competence: Lessons Learned Through Field-Testing the Social Response Inventory (SRI)

- Dennis Sheridan, Azusa Pacific University

On the Road to Baccalaureate Attainment: Understanding the Transfer Adjustment Process

- Latrice E. Eggleston, Frankie Santos Laanan, University of Illinois at Urbana-Champaign; Wynetta Y. Lee, North Carolina State University

4:00-5:30 PM

Concurrent Session F

**F1. Research/Scholarly Papers
International PreConference Session:
Global Dimensions of Organizational Transformation
Location: Salon A**

A world apart?: Higher education transformation in the United States and South Africa

- Peter Eckel, American Council on Education

The university colleges of British Columbia and the process of economic globalization

- John Levin, University of Arizona

Social functions of evaluation compared: Analyzing Finnish and Argentinian higher education

- Jussi Valimaa, University of Jyväskylä; Marcela Mollis, Universidad de Buenos Aires

**F2. Research/Scholarly Papers
Influence of Diverse Peers and Friends in College
Location: Salon B**

Chair: Jenny J. Lee, UCLA

Discussant: Lisa Wolf-Wendel, University of Kansas

When Does Race Matter in College Friendships? Exploring the Role of Race Within Diverse and Homogeneous Friendship Groups

- Anthony L. Antonio, Stanford University

The Effects of Interactional Diversity on Selected Self-Reported Learning and Personal Development Outcomes

- Shouping Hu, Seton Hall University; George D. Kuh, Indiana University-Bloomington

Toward an Empirical Delineation of a Normative Structure for College Students

- Timothy C. Caboni, John M. Braxton, Johna Madson, Shederick McClendon, Meaghan E. Mundy; Vanderbilt University

F3. Research/Scholarly Papers
Leadership and Organizational Learning at Community Colleges

Location: Potomac E

Chair: Frankie S. Laanan, University of Illinois at Urbana-Champaign

Discussant: Susan B. Twombly, University of Kansas

Perspectives on Community College

Leadership: Twenty Years in the Making

- Marilyn J. Amey, Kim VanDerLinder, Dennis Brow; Michigan State University

Reporting Mandates vs. Organizational Learning: The Changing Structure and Function of Institutional Research in the Community College

- Lisa A. Petrides, Teachers College-Columbia University

Organizational Effectiveness of Two-Year Colleges: The Centrality of Cultural and Leadership Complexity

- John C. Smart, University of Memphis

F4. Research/Scholarly Papers
Liberal Arts Colleges: Mission and Market

Location: Potomac G

Chair: Pamela Eddy, Michigan State University

Discussant: Adrianna Kezar, University of Maryland

The Public Liberal Arts College: Case Studies of Institutions that Have Bucked the Trend Toward University Status...and Implications for Mission and Market

- Christopher C. Morphey, University of Kansas; J. Douglas Toma, University of Pennsylvania; Cora Hedstrom, Emporia State University

"There Is No Way Without a Because": Purpose-Centered Change at Three Liberal Arts Colleges

- J. Matthew Hartley, Harvard University

Mission, Multiculturalism, and the Liberal Arts College: A Qualitative Investigation

- Ana M. Martinez Aleman, Katya Salkever; Boston College

F5. Research/Scholarly Papers
Faculty Work and Values

Location: Shenandoah J

Chair: Raphael Guillory, Washington State University

Discussant: Kelly Ward, Oklahoma State University

Changes in the Proportional Representation of Women Faculty of Color: The Influence of Institutional Characteristics, Gate Keeping, and Critical Mass Variables

- Ronald D. Opp, Penny Poplin Gosetti; University of Toledo

Working Together? An Investigation into Workplace Differences Between Faculty Members and Administrators

- Janita L. Rawls, Fresno Pacific University; Philo Hutcheson, Georgia State University

Decade-long Changes in Faculty Values, Attitudes and Behaviors: Implications for Student Learning and Institutional Change

- Jennifer A Lindholm, Helen S. Astin; UCLA

F6. Symposium

Women, Higher Education and Neo-Liberal Politics: An Application of Critical Feminist Policy Analysis

Location: Shenandoah H

- Kate Shaw, Temple University
- Cheryl Winston-Bartlett, University of Arizona
- Sheila Slaughter, University of Arizona
- Judith Glazer-Raymo, New York University
- Estela Bensimon, University of Southern California

F7. Roundtables

Location: Rappahannock

An Assessment Model and Methods for Evaluating Distance Education

- Marilyn Lockhart, Montana State University, Bozeman; Kirk Lacy, Montana State University, Billings

Over the Rainbow: A Case Study of a Developmental Model of Cultural Competence at a Roman Catholic University

- Cheryl Getz, University of San Diego

F8. Focused Dialogue

Operationalizing the Scholarship of Teaching

Location: Roanoke

- Jeffery P. Aper, Terri Mangione, Norma Mertz, University of Tennessee

Friday
5:45 - 7:00 PM
President's Address
Location: Salon ABC

"Changing Expectations in a Shifting Context: Academic Lives in Transition"

Ann E. Austin, Michigan State University

Opening Remarks

John Thelin, ASHE Immediate Past President
University of Kentucky

Presider

Kate Shaw, 2001 ASHE Program Chair
Temple University

Saturday
8:00-9:30AM
Plenary Session
Location: Salon ABC

"Enhancing the Impact of Higher Education Research: Examining the Linkages Between Researchers, Policymakers, Institutional Leaders, and Foundation Leaders"

Chair

Ann E. Austin
Michigan State University

Panelists

Jacqueline E. King
American Council on Education

D. Bruce Johnstone, SUNY Buffalo

Yolanda T. Moses, American Association for Higher Education

Gary D. Rhoades, University of Arizona-Tucson

Lou Anna K. Simon, Michigan State University

Moderator

Mildred Garcia, Berkeley College

SATURDAY, November 17th

7:00-8:00AM

Continental Breakfast

Location: James River Foyer

Sponsored by: Institute for Research on Higher Education and the University of Pennsylvania And Digitalmill, Inc.

"An Introduction to Virtual U: Using a Computer Simulation in Teaching Higher Education"

9:45-11:15 AM
Concurrent Session G

G1. Research/Scholarly Papers
Worklives and Behaviors of Higher Educational Administrators

Location: Salon A

Chair: Joan B. Hirt, Virginia Tech
Discussant: Lemuel Watson, Clemson University

The Influence of Academic Discipline on Administrative Behaviors of Academic Deans

• Marietta Del Favero, Vanderbilt University

(Saturday, Concurrent Session G1)

Mediating the Intent to Leave: The Affective Responses of Midlevel Administrators to Their Worklives

- Linda K. Johnsrud, University of Hawaii-Manoa; Regina L. R. Edwards, Arizona State University

Women Administrators: Their Investments in Human Capital

- Kim VanDerLinden, Marilyn Amey; Michigan State University

**G2. Research/Scholarly Papers
Financial Aid and Student Outcomes
Location: Salon B**

Chair: Kyle Scaffide, University of New Orleans
Discussant: Andrew I. Kohen, James Madison University

The Effects of Student Loans on Degree Attainment

- Dongbin Kim, UCLA

Merit Scholarship Criteria and Equity of Award Distribution: An Examination of Race and Class

- Donald E. Heller, University of Michigan; Christopher J. Rasmussen, University of Michigan

The Temporal Effects of Changes in Financial Aid Packaging on Student Departure From College

- Stephen L. DesJardins, University of Iowa; Dennis A. Ahlburg, Brian P. McCall; University of Minnesota

**G3. Research/Scholarly Papers
Academic Programs and Faculty Work
Location: Potomac E**

Chair: Kevin Kinsler, Louisiana State University
Discussant: Jeff Bieber, University of Kentucky

Credit Courses on College and University Teaching in American Higher Education Programs

- Claire C. Major, University of Alabama; Laurie Richlin, Claremont Graduate University

Liberal Education as Symbol and Ritual: Faculty Interpretations of Liberal Education in Baccalaureate Colleges

- Joanne M. Burrow, Indiana State University

Faculty Salary Equity: Contextual Effects of Academic Discipline

- Paul Umbach, University of Maryland

General Education Reform and Institutional Culture-An Analysis of Two Institution

- Greg K. Dubrow, University of Pennsylvania

**G4. Dissertation of the Year
Location: Potomac G**

G5. Symposium

The Contemporary Academic Workforce: Analyses of the 1999 National Study of Postsecondary Faculty

Location: Salon C

- Valerie Martin Conley, Virginia Tech
- Linda Zimpler, NCES
- Rita Kirshstein, Andrea Berger, American Institutes for Research
- Basmat Parsad, Westat
- Ellen M. Bradburn, MPR Associates, Inc.

G6. Focused Dialogue

Collaborative Research on Diversity: Informing National Dialogues, Transforming Ten Institutions

Location: Shenandoah J

- Sylvia Hurtado, University of Michigan
- Therese Eyer mann and Mitchell Change, UCLA
- Ximena Zuniga, University of Massachusetts-Amherst
- Jeffrey Milem, University of Maryland
- Arturo Sierra, University of New Mexico
- Kathleen Manning, University of Vermont

G7. ASHE Town Meeting

Highlight on Important Issues for the Organization

Location: Salon F

Chair: Ann E. Austin, President

Presenter: Ana M. Martinez Aleman, Chair, ASHE Task Force on the Future of the Membership

**11:15AM-12:15PM
ASHE Community Governance Meeting
Location: Salon D**

**1:15-2:45PM
Concurrent Session H**

**H1. Research and Scholarly Papers
Comparisons of Academic Leadership
Location: Salon A**

Chair: James T. Minor, University of Southern California

Discussant: Marvin W. Peterson, University of Michigan

Leadership Theories in a "Zone of Ambiguity"
Comparing Universities with K-12

- James L. Bess, New England Resource Center for Higher Education; Paul Goldman, University of Oregon

Reconciling Differences: Conflict Management Skills of Catholic College and University Presidents

- Jay R. Dee, University of Massachusetts-Boston, Fred B. Holman; St. Thomas University

A Comparison and Analysis of the Definitions of Leadership Provided by Head of U.S. and English Higher Education Institutions

- Sharon McDade, George Washington University

H2. Research and Scholarly Papers
Access and Persistence: High School and Beyond

Location: Salon B

Chair: Alexander McCormick, The Carnegie Foundation

Discussant: Christopher Mazzeo, Baruch College

Examining the Outcome of K-14 Reform: College Placement Among Community College Entrants in Four Disparate Settings

- Debra D. Bragg, Jung-Sup Yoo, Jane Loeb, University of Illinois at Urbana-Champaign; Eboni M. Zamani, Eastern Michigan University

The Role of Perceptions of Remediation on the Persistence of Development Students in Higher Education

- Viola Garcia, University of Houston-Downtown; Amaury Nora, University of Houston

What Determines an Institutions' Transfer Student Enrollment?

- John J. Cheslock, University of Arizona

H3. Research and Scholarly Papers
Family Matters and College Access
Location: Potomac E

Chair: Erin McNamara Horvat, Temple University

Discussant: Anthony Antonio, Stanford University

Family and Its Affect on Institutional Choice and Post-Freshman Retention of Indian/Alaska Native Students at a Bible College

- Joseph J. Saggio, American Indian College

"But Who Will Take Care of her?": The Tensions of Latinas Leaving Home For Elite Universities

- Kenneth P. Gonzalez, University of San Diego; Carla Stoner, San Jose State University

Parent Involvement in the College Planning Process: A Case Study of K-16 Collaboration

- Karen A. McClafferty, Patricia M. McDonough, Amy Fann; UCLA

H4. Research and Scholarly Papers
Curriculum, Planning and Innovation
Location: Potomac G

Chair: Darwin Hendel, University of Minnesota
Discussant: Joan S. Stark, University of Michigan

Intellectual Initiatives at a Research University: Origins, Evolutions, and Challenges

- Susan H. Frost, Paul M. Jean, Daniel Teodorescu, Amy B. Brown; Emory University

The Role of Curriculum Expertise in "Continuous Planning" Academic Departments

- Charlotte L. Briggs, University of Michigan

Faculty Members' Experience of Academic Unit Reorganization: Sensemaking and Identity in Organizational Change

- Michael R. Mills, University of South Florida

H5. Symposium
Mapping the Coordinated Impact of Student Financial Aid: Access, Choice, Persistence, and Socioeconomic Attainment

Location: Salon C

- Scott L. Thomas, University of Georgia
- Donald E. Heller, University of Michigan
- Laura W. Perna, University of Maryland

H6. Symposium
Toward Critical Race Theory Frameworks in Higher Education

Location: Shenandoah J

- Octavio Villalpando, Dolores Delgado Bernal, Bryan McKinley Brayboy, University of Utah
- Daniel G. Solorzano, UCLA
- Tara J. Yosso, University of California-Santa Barbara
- Michael Olivas, University of Houston

(Saturday, Concurrent Session D)

H7. Focused Dialogue

Re-Remembering: Rethinking Separation and Student Persistence
Location: Rappahannock

- R. Deborah Davis, Vincent Tinto, April L. Harris, Syracuse University

H8. Graduate Student Session

The View from the Professional Side: Job Search and Early Career Survival Tips
Location: Salon D

- Leonor Perez, East Los Angeles Community College
- MaryBeth Walpole, Rowan University
- Kim E. Freeman, UNCF/Patterson Research Institute
- Jerlando F. L. Jackson, University of Wisconsin-Madison

3:00-4:00 PM

Informal Conversations

I. ASHE Publications Session

Location: Salon A

- Phil Altbach, Editor, *Review of Higher Education*
- Len Baird, Editor, *Journal of Higher Education*
- John Smart, Editor, *Research in Higher Education*

II. Studying Graduate Students and Graduate Education

Location: Salon B

Moderators: Jeffery P. Bieber, University of Kentucky and Chris Golde, Carnegie Foundation

III. Student and Faculty Activism

Location: Potomac E

Moderators: Robert Rhoads, Jenny Lee, Estella Gutierrez-Zamano, UCLA

IV. The Intersection of Race, Class and Gender

Location: Potomac G

Moderators: Erin McNamara Horvat and James Davis, Temple University

V. Examining the Effects of Broader Social Policy on Higher Education

Location: Salon C

Moderator: Christopher Mazzeo, Baruch College

4:00-5:30 PM

Concurrent Session I

II. Research/Scholarly Papers Studies of Special-Niche Institutions

Location: Salon A

Chair: Paul Pitre, Auburn University
Discussant: Len Foster, University of Montana

Philanthropic Influence on the Affiliation of Atlanta University, Morehouse College, and Spelman College: Benevolent Endeavor or Manipulative Mechanism?

- Vida L. Avery, Georgia State University

Deconstructing Hispanic-Serving Institutions: Is Their Role and Function Unique in Higher Education

- Berta Vigil Laden, University of Toronto, OISE

Effects of a First Semester Learning Community on the Academic and Social Integration of Nontraditional Technical Students at a Commuting Institution

- Barbara M. I. Goldberg, DeVry College of Technology; Martin Finkelstein, Seton Hall

12. Research/Scholarly Papers Centering Scholarship on Women
Location: Salon B

Chair: Joyce Raveling, University of Washington

Discussant: Judith Glazer-Raymo, Long Island University

Women and Feminism in Higher Education Scholarship: An Analysis of Three Core Journals

- Jennifer L. Hart, University of Arizona

The Impact of Friendships and Romantic Relationships on Women's Adjustment to College

- Shannon K. Gilmartin, UCLA

(Im)Possibility of Reading Different Women's Lives

- Jeong-Eun Rhee, The Ohio State University

13. Research/Scholarly Papers African American Students' Voices and Experiences

Location: Potomac E

Chair: Shederick A. McClendon, Vanderbilt University

Discussant: Larry L. Rowley, University of Michigan

Student Centered: African American Studies and Its Relevance to African American Students

- Patrick T. Spearman, Temple University

African American Student Persistence at Small Colleges in Appalachia: A Qualitative Study

- Robert A. Littleton, Carson-Newman College

Saturday, Concurrent Session 13)

African American Students at Highly-Selective Colleges: Experiences and Outcomes

- MaryBeth Walpole, Constance Bauer, Carolyn Gibson, Kamau Kanyi, Rita Toliver; Rowan University

14. Symposium

Transfer—Where You Least Expect It

Location: Potomac G

- Linda S. Hagedorn, University of Southern California
- Barbara Townsend, University of Missouri-Columbia
- Debra Bragg, Frankie Santos Laanan, University Illinois, Urbana-Champaign
- Berta Vigil Laden, University of Toronto

15. Symposium

College-Level Learning in High School: Policies, Practices, and Issues

Location: Salon C

- D. Bruce Johnstone, Beth Del Genio, Kenneth J. Barnes, SUNY Buffalo
- Richard Clark, Institute for Educational Inquiry

16. Focused Dialogue

Conundrums of Legitimacy: Thinking Differently About Research

Location: Shenandoah J

- Susan Talburt, Benjamin Baez, Georgia State University
- Estela Bensimon, University of Southern California
- Adrianna Kezar, University of Maryland
- Gary Rhoades, University of Arizona

17. Roundtables

Location: Rappahannock

When Collaborations Collapse: Rethinking, Regrouping, Retreating in Academic Partnerships

- Katherine Reynolds, University of South Carolina; Elizabeth Creamer, Virginia Tech University

Institutional Decision-Making in the Context of College Athletics: Power, Influence and Conflict

- Janet M. Holdsworth, University of Minnesota; John R. Thelin, University of Kentucky

18. Invited Session

Discipline-Based Contributions to the Study of Higher Education: Economic, Sociological, and Anthropological Perspectives

Location: Salon D

- Economics: Sarah Turner, University of Virginia
- Anthropology: Wesley Shumar, Drexel University
- Sociology: Kevin Dougherty, Teachers College, Columbia University

**ASHE BASH
5:30-6:30PM
Potomac EFG**

SUNDAY

8:15-9:45 AM

Concurrent Session J

**J1. Research/Scholarly Papers
(Re)Considering Identities: Gender, Race, and Sexual Orientation**

Location: Salon A

Chair: R. Deborah Davis, Syracuse University
Discussant: John R. Goss, AERA

Identity as a Phenomenon of Multiples

- Denise Collins, Virginia Tech

Effective Antiracism Intervention of Racial Identity of Black Women

- Bridget D. Turner, University of Vermont

More Than Either/Or: Implications For Theory and Practice From the Collegiate Lives of Non-Heterosexual Men

- Patrick Dilley, University of Washington

J2. Roundtables

Location: Potomac F

Educational Cohorts: Potentials and Pitfalls of a Collaborative Learning Environment

- Michelle A. Maher, University of South Carolina

Backlash to Dual-Career Hiring Policies for Academic Couples: Parallels to Affirmative Action

- Elizabeth G. Creamer, Virginia Tech University; Mimi Wolverton, University of Nevada-Los Vegas; Noel Collier, Washington State University

**J3. Research/Scholarly Papers
Academic Leadership and Change**

Location: Potomac E

Chair: Brian Bridges, Indiana University
Discussant: Daryl Smith, Claremont University

(Sunday, Concurrent Session J3)

The President and Presidential Assistant Leadership Team: An Analysis of Their Leadership Dynamics and Compatibility

- Sharon A. McDade, George Washington University

Deans' Affective Commitment: Optimizing the Work Environment

- Mimi Wolverton, University of Nevada, Las Vegas; Raphael Guillory, Joni Montez, Washington State University; W.H. Gmelch, Iowa State University

Faculty Change Agents: A Contextual and Processual Understanding of Organizational Change in Higher Education and the Factors that Enable or Impede Faculty Involvement

- Connie Schroeder, University of Wisconsin-Madison

J4. Research/Scholarly Papers
Faculty Evaluation and Tenure
Location: Potomac G

Chair: Darwin Hendel, University of Minnesota
Discussant: Carol Colbeck, Pennsylvania State University

Why is Tenure One College's Problem and Another's Solution?

- William T. Mallon, Association of American Medical Colleges

Post-Tenure Review: What Matters to Faculty

- Melinda S. Wood, University of Hawaii-West O'ahu

On the Teaching Track: University Reform and Faculty Evaluation

- Robert C. Serow, North Carolina State University

J5. Symposium

Broadening the Carnegie Classification's Attention to Mission: Incorporating Public Service
Location: Salon D

- Alexander C. McCormick, Carnegie Foundation for the Advancement of Teaching
- Larry L. Rowley, University of Michigan
- Barbara A. Holland, Indiana University-Purdue University, Indianapolis
- Robert L. Church, Michigan State University

J6. Symposium

Beyond Cultural Capital: Utilizing Bourdieu in Higher Education Research
Location: Shenandoah J

- MaryBeth Walpole, Rowan University

- Patricia M. McDonough, UCLA
- Joseph B. Berger, University of Massachusetts
- Erin McNamara Horvat, Anette Lareau, Temple University
- Wesley Shumar, Drexel University

J7. Focused Dialogue

Building a Perennial Gestalt for Success for African American Males in the Academy

Location: Shenandoah H

- Jerlando Jackson, University of Wisconsin
- Lemuel Watson, Clemson University
- Willie J. Heggins III, Iowa State University
- James Coaxum III, Rowan University
- Lee Jones, Florida State University

J8. Research/Scholarly Papers
Policy, Finance and Institutional Performance

Location: Salon B

Chair: Danielle Orr-Bement, University of Washington
Discussant: Michael Parsons, Indiana University

High Risk Venturing: An Empirical Investigation of University Technology Licensing to Start-Ups and Young Private Firms

- Joshua B. Powers, Indiana State University

State Postsecondary Policy Innovation: Analyzing the Determinants of Policy Innovation in the American States

- Michael K. McLendon, Steven Young, Vanderbilt University

The Educational Needs Index: A New Approach to Education Policy and Research

- Houston D. Davis, Austin Peay State University; Brian E. Noland, Tennessee Higher Education Commission

10:00-11:30 AM
Concurrent Session K

K1. Research/Scholarly Paper
Status and Transition of Community College Students
Location: Salon A

Chair: Eboni M. Zamani, Eastern Michigan University
Discussant: Linda Serra Hagedorn, University of Southern California

Analysis of Students Attending Public Two-Year Colleges: A National Perspective

- Frankie S. Laanan, Mijung Yoon University of Illinois at Urbana-Champaign; James R. Stone, III, University of Minnesota

Improving the Transfer Rates of Minority Students: A Case Study

- Sherrie L. Guerrero, University of Southern California

Community College Students' Perceptions of Growth and Development: Ethnic Groups and Full-time and Part-time Differences

- Robert A. Horn, Corinna A. Ethington; University of Memphis

**K2. Research/Scholarly Papers
The Life Course of Faculty
Location: Salon B**

Chair: Daryl Holloman, Georgia State University
Discussant: Michael Mills, University of South Florida

The Professionalism and Socialization of Developmental Faculty

- Carol A. Kozeracki, UCLA

Mining Mid-Career: Exploring Faculty Life in the Middle Years

- Roger G. Baldwin, College of William and Mary

Academic Mothers: Managing Complex Roles in Research Universities

- Lisa Wolf-Wendell, University of Kansas; Kelly Ward, Oklahoma State University

**K3. Research/Scholarly Papers
State Higher Education Policy and Planning
Location: Potomac E**

Chair: Patrick Spearman, Temple University
Discussant: Carol Camp Yeakey, University of Virginia

Campus and State Leaders' Perceptions of the Policy Environment for Postsecondary Educational Access in New England

- Joseph B. Berger, University of Massachusetts-Amherst

A Political Model of Higher Education Governance and Policy Reform Adoption

- Houston D. Davis, Austin Peay State University

Social Contract and Economic Development in State Higher Education Planning

- Thomas E. Perorazio, University of Michigan

K4. Symposium

Toward Technological Bloat and Academic Technocracy: Possible Impact of Information Technology on Higher Education in the 21st Century

Location: Potomac G

- Sheila Slaughter, Gary A. Cruz, Amy Scott Metcalfe, Lisa A. Tarsi, Richard L. Wagoner, University of Arizona

K5. Symposium

Integrating Research and Practice: Learning from Studies of the Racial Climate at One University Campus

Location: Shenandoah H

- Jeffrey F. Milem, Paul D. Umbach, Marie P. Ting, Sharon Fries-Britt, Robert Kelly, Craig Alimo, Jeff VanCollings, Robert Waters, University of Maryland
- Sylvia Hurtado, University of Michigan

K6. Roundtables

Location: Potomac F

How Might Quantitative Research Use Critical Theory?

- Lori Vogelgesang, University of Southern California

Information as a Conduit to Institutional Change

- Michelle Gonzalez Bleza, UCLA

K7. Focused Dialogue

Transforming a Hispanic Serving Comprehensive University into a Flagship Institution: Challenging Tacit Assumptions Associated with Research Institutions

Location: Shenandoah J

- Fred A. Bonner, Guy Bailey, Blandina Cardenas, Betty Merchant, Alan Shoho, University of Texas at San Antonio

K8. Focused Dialogue

The Crits and Bloods: A Close Examination of a Higher Education Course That Focused on Race and Racism

Location: Salon D

- Amy Bergerson, Bryan McKinley Brayboy, Mary DeLaRosa, Melissa Moreno, Octavio Villalpando, and Angie Van Dijk, University of Utah

2001 ASHE Proposal Reviewers

Focused Dialogues

Gregory Anderson
 Marianne Bakia
 Ramona Brown
 Linda Serra Hagedorn
 Floyd Hammack
 Lee Kniefkamp
 Berta Vigil Laden
 David Levinson
 Annabella Martinez
 Katherine McClelland
 Vanessa Smith
Moorest
 Gary Natriello
 Anna Neumann
 Lisa Petrides
 Jeffrey Putman
 Janice Robinson
 Karen Stugensky
 Lynn Swaner
 Aimee Terosky

Roundtables

Flo Hamrick
 Susan H. Barr
 Dr. R.B. Wilkinson
 Dr. Elizabeth G. Creamer
 Janet M. Holdsworth
 Mimi Benjamin
 Albert B. Smith
 Barbara Tobolowsky
 Charlotte Sullivan
 Dr. Alan T. Seagren
 Robert D. Reason
 Caroline S. Turner
 Audrey Jaeger
 Joy R. Kliewer
 Barbara K. Townsend
 J. Douglas Toma
 Beverly L. Bower
 Kandis M. Smith
 Robert V. Labaree
 Elton J. Crim
 Mary Kinnick
 Rosa Cintron
 Charles Outcalt
 Jimmy H. Elam
 Jane W. Loeb
 Wanda B. Coneal
 Kelly Ward
 Christopher Morphew
 Lisa Wolf-Wendel
 Susan Twombly

Poster Sessions

Jay Dee
 Alicia Dowd
 Sheila Edwards
 Courtney Elbert
 Darwin Hendel
 Jane Jensen
 Tara Kilgore
 Joann Linnville
 Patricia McKeown
 Nina Oman

Danielle Marie Orr-Bement
 Joyce Raveling
 Kate Shaw
 Patrick Spearman
 Randy Spaulding
 John Thelin
 Amy Wells

Symposia

Daryl Smith
 Jan Ignash
 Frankie Laanan
 MeHee Hyun
 Marguerite Bonous-Hammarth
 Robert Rhoads
 Marisol Arredondo
 Sharon Goldsmith
 Jennifer Grant
 Haworth
 Elaine El-Khawas
 Timothy K. Eatman
 Caroline Turner
 Therese Eyermann
 Anna Ortiz
 Miguel Ceja
 Mitch Chang
 Andrea Venezia
 Christine Cress
 Elaine Ikeda
 Lori Vogelgesang
 Lucy Lee
 Michael Bastedo
 Lisa Tsui
 Reitumetse Mabokela
 MaryBeth Walpole
 Anne Hornak
 Kenneth P. Gonzalez
 Deborah Faye Carter
 Benjamin Baez
 Stuart K. Snyderman
 Octavio Villalpando
 Jeffrey F. Milem
 Jessica Korn
 Ed Taylor
 Patricia A. Somers
 Berta Vigil Laden

Research/Scholarly Papers

Marilyn Amey
 Anthony Lising
 Antonio
 Jeff Aper
 Susan Barr
 Jeffery Bieber
 Pat Boyer
 John Braxton
 Nathaniel Bray
 Brian Brayboy
 Brian Bridges
 Ellen Brier
 M. Christopher Brown
 Julie Caplow
 Tony Cawthon
 Tesheng Chang

David Chapman
 Edith Cisneros-Cohernour
 Ella Cleveland
 James Coaxum
 Carol Colbeck
 Lori Colliander
 Mark Connolly
 Elizabeth Creamer
 Nuria Cuevas
 William Culter
 Scott Dantley
 James Earl Davis
 Kevin Dougherty
 Susan Doyle
 Greg Dubrow
 Joseph Ducette
 Larry Ebbers
 Pamela Eddy
 Sheila Edwards
 Therese Eyermann
 Ava Fajen
 Nasrin Fatima
 Jonathan Fife
 James Forest
 Len Foster
 Kassie Freeman
 Judith Glazer-Raymo
 Chris Golde
 John Goss
 Paul Green
 Steven Gross
 Flo Hamrick
 Mandana
 Hashhemzadeh
 Darwin Hendel
 Angela Hildyard
 Joan Hirt
 Sharon Holmes
 Jodi Patrick Holschuh
 Erin McNamara
 Horvat
 Shouping Hu
 Betty Hubschman
 Philo Hutcheson
 Karen Inkelas
 Fred Jacobs
 Wayne Jacobson
 Steve Janosik
 Brian Jara
 William Johnson
 Gwendolyn Jones
 Beth Jones
 Alexander Jun
 Adrianna Kezar
 Kathleen King
 Kevin Kinser
 Rita Kirshstein
 Andrew Kohen
 Kerri-Lee Krause
 Emlei Kuboyama
 Frankie Laanan
 Berta Laden
 Charles Lamb
 Lisa Lattuca
 Jenny Lee
 Wynetta Lee

Virginia Lee
 Kris Lewis
 Yvonna Lincoln
 Joann Linnville
 Jane Loeb
 Nancy Longo
 Brenda Martin
 Chris Mazzeo
 Karen McClafferty
 Shederick McClendon
 Patricia McKeown
 John Milam
 Jeffrey Milem
 Christopher Morphew
 John Murray
 Millie Murray-Ward
 Anne-Marie Nunez
 Nina Oman
 Ronald Opp
 Danielle Orr-Bement
 Charles Outcalt
 Betsy Palmer
 James Palmer
 Rosemary Papelcwis
 Sondra Patrick
 Michael Paulsen
 Laura Perna
 Josh Powers
 Brian Pusser
 Joyce Raveling
 Jim Rawlins
 Kristen Renn
 Ferrante Reynolds
 Cristina Rios
 Lynn Safarik
 Robert Serow
 Linda Serra Hagedorn
 Joan Shapiro
 Kate Shaw
 Iola Ragins Smith
 Pearl Solomon
 Randy Spaulding
 Patrick Spearman
 Susan Talburt
 Alton Taylor
 Robert Teranishi
 Sharon Tettegah
 John Thelin
 Scott Thomas
 Doug Toma
 Linda Townzen
 Sarah Turner
 Susan Twombly
 Paul Umbauch
 James Vander Putten
 Kim VanDerLinden
 Andrea Venezia
 Octavio Villalpando
 MaryBeth Walpole
 Kelly Ward
 John Welsh
 Lisa Wolf-Wendel

ASHE AWARD WINNERS

(Awards listed are those given since 1985, the year that the ASHE Awards Committee was officially recognized)

Howard R. Bowen Distinguished Career Award

Presented to an individual whose professional life has been devoted in substantial part to the study of higher education and whose career has significantly advanced the field through extraordinary scholarship, leadership and service. The award is usually presented at, or near, the time of the individual's retirement.

2000	Arthur Chickering
1999	Joan S. Stark
1998	Arthur Cohen
1997	Burton Clark
1996	Alexander W. Astin
1995	William Toombs
1994	Robert Silverman
1993	Robert O. Berdahl
1992	K. Patricia Cross
1991	Cameron Fincher
1989	Mary Corcoran Robert Pace
1987	Lewis Mayhew Joseph Kauffman
1986	David Riesman
1985	Howard R. Bowen

Years of Service to ASHE Award

2000	Walter Hobbs (Legal Counsel)
------	------------------------------

Research Achievement Award

Presented for outstanding contribution to research for an individual whose published research (theoretical, empirical or applied) advances understanding of higher education in a significant way.

2000	George Kuh
1999	Vincent Tinto
1998	Sheila Slaughter
1997	William Tierney
1996	Kenneth A. Feldman
1995	Larry L. Leslie
1994	Michael A. Olivas
1993	Yvonna S. Lincoln
1992	Joan Stark
1990	Ernest Pascarella Patrick Terenzini
1990	Robert Birnbaum
1989	Jack Schuster
1988	Robert Blackburn Howard Bowen
1987	Alexander W. Astin
1985	Burton Clark

Special Merit Award

Presented to a person, group or organization in recognition of distinctive support for the purposes and goals of the Association for the Study of Higher Education.

- 2000 Michael Olivas
- 1995 Lavina Fielding Anderson
- 1993 Walter Hobbs
- 1992 Jossey-Bass Inc. Publishers
- 1989 Peggy Heim
Robert Silverman

ASHE Distinguished Service Award

Presented in recognition of exceptional commitment to the Association for the Study of Higher Education and significant contribution to its success.

- 2000 Mildred Garcia
- 1999 Philip G. Altbach
- 1998 Joan S. Stark
- 1996 Stan Carpenter and Patricia Hyer
- 1995 Daryl Smith
- 1993 John Smart
- 1990 L. Jackson Newell
- 1987 Jonathan Fife

Early Career Award

Given for a significant body of scholarship or a single extraordinary research achievement by a higher education scholar, and in recognition of potential for future research. The Early Career Award is reserved for individuals who are no more than six years beyond the receipt of the doctoral degree.

- 2000 Linda Hagedorn
Lisa Wolf-Wendall
- 1999 Linda J. Sax
- 1998 Jennifer Grant Haworth
- 1997 Robert Rhoads
- 1996 Eric Dey
- 1995 Sylvia Hurtado
Elizabeth Whitt
- 1993 Alberto Cabrera
Patricia Gumpert
- 1991 Amaury Nora

Leadership Award

Given for outstanding leadership in advancing the study of higher education. This award is intended to recognize individuals who bring visibility and support to the field of higher education by demonstrating the contributions of the study of higher education to policy formation, or in gaining substantial resources for research and training in higher education.

- 2000 Ted Marchese
- 1999 Zelda Gamson
- 1996 Peter Ewell
- 1995 Derek Bok
- 1992 Ernest Boyer
- 1990 Kenneth P. Mortimer

Bobby Wright Dissertation of the Year Award

Named in memory of Irvin Lee (Bobby) Wright, this award recognizes one or more dissertations that serve as exemplary models of the methodology employed. Criterion also include the significance of the dissertation topic.

2000-2001: David Weerts *Understanding Differences in State Support for Higher Education: A Comparative Study of State Appropriations for Research Universities*

Cited for Excellence: William Mallon *Abolishing or Instituting Tenure: Four Case Studies of Change in Faculty Employment Policies*

1999-2000: Marvin Dewey *An Exploratory Study of the Relationship Between Cognitive Complexity of Administrative Teams in Private Liberal Arts Colleges and Organizational Health as One Dimension of Organizational Effectiveness*

Cited for Excellence: Elizabeth A. Palmer *An Analysis of a Diversity Requirement: The Effect of Course Characteristics on Students' Racial Attitudes, Gender Attitudes, and Self-Perceived Learning*

1998-99: Deborah Faye Carter *A Dream Deferred? Examining the Degree Aspirations of African American and White College Students*

Cited for Excellence: R. Sam Larson *Organizational Change from the Inside: A Study of University Outreach*

1997-98: Joseph Berger (Co-awardee) *Organizational Behavior at Colleges and Student Outcomes: Generating a Quantitatively Grounded Theory*

1997-98: Cynthia Sabik (Co-awardee) *(Re) writing Metaphor and Form: Autoethnographic Enactments from the Postmodern Classroom*

1996-97: Lisa Rose Lattuca *Envisioning Interdisciplinarity: Processes, Contexts, Outcomes*

Cited for Excellence: Rebecca Ropers-Huilman *Shaping an Island of Power and Change: Creating a Feminist Poststructural Teaching Discourse*

Cited for Excellence: Carol L. Colbeck *Organizational and Disciplinary Influences on Integration and Congruence of Faculty Work*

1995-96: Teresa Isabelle Daza Campbell *Protecting the Public's Trust: A Search for Balance Among Benefits and Conflicts in University-Industry Relationships*

1994-95: Robert A. Rhoads *Institutional Culture and Student Subculture: Student Identity and Socialization*

Cited for Excellence: Peter M. Magolda *A Quest for Community: An Ethnographic Study of a Residential College*

1993-94: Rebecca R. Kline *The Social Practice of Literacy in a Program of Study Abroad*

Cited for Excellence: Dorothy Finnegan *Academic Career Lines: A Case Study of Faculty in Two Comprehensive Universities*

1992-93: Martha Lillian Ann Stassen *White Faculty Members' Responses to Racial Diversity at Predominantly White Institutions*

1991-92: Julie Neururer *Decency and Dollars Invested: Case Studies of South African Divestiture*

Cited for Excellence: Francoise Queval *The Evolution Toward Research Orientation and Capability in Comprehensive Universities: A Case Study: The California State University System*

1990-91: Kenneth D. Crews, J.D. *Copyright Policies at American Research Universities: Balancing Information Needs and Legal Limits*

1989-90: Roger L. Williams *George W. Atherton and the Beginnings of Federal Support for Higher Education*

1988-89: Patricia Gumpert *The Social Construction of Knowledge: Individual and Institutional Commitment to Feminist Scholarship*

1987-88: Dolores L. Burke *Change in the Academic Marketplace: A Study of Faculty Mobility in the 1980s*

1986-87: Irvin Lee (Bobby) Wright *Piety, Politics and Profit: American Indian Missions in the Colonial Colleges*

Cited for Excellence: Lester F. Goodchild *The Mission of the Catholic University in the Midwest, 1842-1980*

(Bobby Wright Dissertation of the Year Award)

1985-86: Janet Kerr-Tener *From Truman to Johnson: Ad Hoc Policy Formulation in Higher Education*
Cited for Excellence: Amaury Nora *Determinants of Retention Among Chicano Students: A Structural Model*
Cited for Excellence: Charlotte Hanna *Modest Expectations: Qualitative and Quantitative Analysis of Faculty Affirmative Action*

1984-85: Lois A. Fisher *State Legislatures and the Autonomy of Colleges and Universities: A Comparative Study of Legislation in Four States, 1900-79*
Runner-up: Bernard Reams *Research Interactions Between Industry and Higher Education*
Cited for Excellence: Marta Wagner *The American Scholar in the Early National Period: The Changing Context of Colonial Education*

1983-84: Jeffery Bartkovich *Designing an Empirically Derived Taxonomy of Organization Structures in Higher Education*
Cited for Excellence: Constance Collins *Loose Coupling as a Framework for Understanding Structural Change: Case Studies of Four American Colleges and Universities*
Cited for Excellence: Edward Ottensmeyer II *Strategic Organizational Adaptation and the Regulatory Environment: A Study of Universities During a Time of Regulatory Change*

1982-83: Catherine Marienau *Bridging Theory and Practice in Adult Development and Planned Change*
Cited for Excellence: Jerry Wayne Askew *Toward a Theory on the Impact of Budget Retrenchment in Educational Organizations*
Cited for Excellence: Ellen Metzner *Ironside Career Paths of Women Administrators in Higher Education*

1981-82: Ellen Chaffee *Decision Models in Budgeting*
Cited for Excellence: Ted I. K. Youn *The Career of Young Ph.D.s: Temporal Change and Institutional Effects*
Cited for Excellence: Joyce Mushaben *The State Versus the University: Juridicalization and the Politics of Higher Education at the Free University of Berlin, 1969-79*

1980-81: Paul Duby *An Investigation of the Mediating Role of Causal Attitudes in School Learning*
Cited for Excellence: James Henson *Institutional Excellence and Student Achievement: A Study of College Quality and Its Impact on Education and Career Development*

1979-80: Kenneth Bradley Orr *The Impact of the Depression Years 1929-39 on Faculty in American Colleges and Universities*
Cited for Excellence: Daniel Carl Levy *University Autonomy Versus Government Control: The Mexican Case*

Participants and Sessions

- Adelman, Clifford, D3
 Affolter-Caine, Britany, A2
 Ahlburg, Dennis, G2
 Akroyd, Duane, D7
 Aleman, Ana M. Martinez, F4, G7
 Alexander, F. King, A7
 Alimo, Craig, K5
 Allen, Walter, A2
 Altbach, Philip, International Forum, Sat, ASHE Pubs
 Amey, Marilyn, F3, G1
 Anderson, Gregory, International Forum
 Anderson, Melissa, E1
 Antonio, Anthony Lising, B5, F2, H3
 Antony, James, C6
 Apter, Jeff, C5, D4, F8
 Arnold, Karen, E3
 Arrendondo, Marisol, A2, E6
 Astin, Helen, F5
 Austin, Ann, International Forum, C6, Presidential Address, Saturday Plenary, G7
 Avery, Vida, I1
 Bacig, Karen, D2, Poster
 Baez, Benjamin, I6
 Bailey, Guy, K7
 Baird, Len, Sat. ASHE Publications
 Baldwin, Roger, K2
 Barnes, Kenneth, I5
 Bat-Frdene, Regsaren, International Forum
 Bauer, Constance, I3
 Bauman, Georgia, K6
 Baylor, Leanne, Poster
 Beekhoven, Sandra, International Forum
 Bensimon, Estela, F6, I6
 Berger, Andrea, G5
 Berger, Joseph, J6, K3
 Bergerson, Amy, B1, K8
 Berina, E. Charmaine, Poster
 Bernal, Dolores Delgado, H6
 Bertrand, Ronyelle, B2
 Bess, Jim, H1
 Bieber, Jeff, G3, Saturday, Open Conversation
 Bienvenu, Claire, D4
 Bleza, Michelle Gonzales, K6
 Bonner, Fred, K7
 Bonous-Hammarth, Marguerite, A2
 Booker, Robert, International Forum
 Bower, Beverly, A8, D7
 Bracamontes, Ana, International Forum
 Bradburn, Ellen, G5
 Bragg, Debra, H2, I4
 Braxton, John, D6, F2
 Brayboy, Brian McKinley, H6, K8
 Breneman, David, Public Policy Forum, C1, E7
 Bresciani, Marilee, Poster
 Bridges, Brian, J3
 Briggs, Charlotte, H4
 Brown, Amy, H4
 Brown, Dennis, F3
 Brown II, M. Christopher, D1
 Bryant, Alyssa, A5
 Burke, Joseph, A7
 Burkhardt, John, B6
 Burns, Cynthia, Public Policy Forum
 Burrow, Joanne, G3
 Caboni, Timothy, F2
 Cabrera, Alberto, A3
 Cain, Timothy Reese, E3
 Cardenas, Blandina, K7
 Carter, Deborah Faye, C3
 Change, Mitchell, G6
 Chapman, David, International Forum, B8
 Cheslock, John, H2
 Chichester, John H., Public Policy Forum
 Church, Robert, J5
 Cisneros-Cochernour, Edith, J4
 Clark, Burton, B5
 Clark, Richard, I5
 Coaxum, James, E1, J7
 Cohodas, Nadine, B7
 Colbeck, Carol, J4
 Colbert, Charles, E6
 Collier, Noel, D7, J2
 Collins, Denise, J1
 Colyar, Julia, C7, D5
 Conger, Amy, A2
 Conley, Valerie Martin, G5
 Connolly, Mark, H4
 Conrad, Cliff, E2
 Corzo, Josefina Quintero, International Forum
 Creamer, Elizabeth, A5, D7, I7, J2
 Cress, Christine, A6, E6
 Crisostomo, Mirtha, B8
 Cruz, Gary, International Forum, K4
 Cuevas, Nuria, E2, Poster
 Currie, Jan, International Forum
 Davis, Houston, J8, K3
 Davis, James, Saturday, Open Conversation
 Davis, R. Deborah, I17, J1
 Davis, Tracy, E1
 Deaton, Russ, E2
 Dee, Jay, B8, H1, Poster
 Deil, Regina, B1
 Del Favero, Marietta, G1
 Del Genio, Beth, I5
 DeLaRosa, Mary, K8
 Deshotels, Judy, Poster
 Desjardins, Stephen, G2
 Diamond, Nancy, Public Policy Forum, D2
 Dickeson, Robert, D8
 Dilley, Patrick, J1
 Doane, Dudley, International Forum, Poster
 Dokter, Christina, International Forum
 Dole, Susan, Poster
 Dougherty, Kevin, A7, E4, I8
 Dozier, Theresa, Public Policy Forum
 Dreher, Joanne, Poster
 Dubrow, Greg, E3, G3
 Duncan, Lucy Hamilton, Public Policy Forum
 Earley, Penelope, Public Policy Forum
 Ekel, Peter, B6, D8, F1
 Eddy, Pamela, F4
 Edwards, Regina, G1
 Eggleston, Latrice, Poster
 Eisenmann, Lisa, A1
 Ellet, Chad, D4
 Elhington, Corinna, K1
 Evensen, Dorothy, E2
 Eyermann, Therese, G6
 Falkner, Tina, E1
 Fann, Amy, E1H3
 Finkelstein, Martin, E5, I1
 Finnegan, Dot, International Forum
 Flippin, Edward, Public Policy Forum
 Flowers, Lamont, A3, C5
 Floyd, Carol Everly, Public Policy Forum
 Foster, Len, A8, B7, I1
 Frances, Carol, E5
 Freeman, Kim E., H8
 Friedman, Anita, International Forum
 Friedman, Debra, D1
 Fries-Britt, Sharon, A3, K5
 Frost, Susan, H4
 Gallager, Michael, Public Policy Forum
 Garcia, Mildred, Sat. Plenary
 Garcia, Viola, H2
 Garrett, Mark, D2
 Gasman, MaryBeth, Poster
 Gavlick, Michael, A4
 Gerdeman, R. Dean, D4
 Getz, Cheryl, F7
 Gibson, Carolyn, I3
 Gifford, Rick, Poster
 Gilmartin, Shannon, A5, I2
 Glazer-Raymo, Judith, F6, I2
 Gmelch, W.H., J3
 Goldberg, Barbara, I1
 Golde, Chris, E1, Sat., Open Conversation
 Goldman, Paul, H1
 Gonyea, Robert, C8
 Gonzalez, Kenneth, B1, H3
 Gosetti, Penny Poplin, F5
 Goss, John, J1
 Guerrero, Sherric, K1
 Guillory, Raphael, F5, J3
 Gumpert, Patricia B5, C4, D2, J8
 Gutierrez-Zamano, Estelita, Saturday, Open Conversation
 Hagedorn, Linda, B4, I4, K1
 Hamrick, Flo, K2
 Hanson, Steve, D7
 Harris, April, H7
 Hart, Jennifer, I2, Poster
 Hartley, J. Matthew, F4
 Hayck, John, C8
 Hearn, James, A6, D3, Poster
 Hedstrom, Cora, F4
 Heggins III, Willic J., J7
 Heller, Donald, Public Policy Forum, A2, D3, G2, H5
 Hewitt, Max, International Forum, E2
 Hildyard, Angela, A4
 Hirt, Joan, G1
 Holdsworth, Janet, I7
 Holland, Barbara, A6, J5
 Holman, Fred, I11
 Holmes, Sharon, B2
 Horn, Robert, K1
 Horvat, Erin McNamara, D1, H3, J6, Sat, Open Conversation
 Hu, Shouping, A5, F2
 Hurtado, Sylvia, B5, D6, G6, K5
 Hutchison, Philo, E3, F5
 Hyle, Adrienne, B2
 Inkelas, Karen Kurotsuchi, D1
 Inman, Patricia, Public Policy Forum
 Jackson, Jerlando, B2, H8, J7
 Jaeger, Audrey, E2
 Jean, Paul, H4
 Jillings, Lewis, International Forum
 Johnson, Lloyd Sheldon, Poster
 Johnsrud, Linda, B4, G1
 Johnstone, D. Bruce, Sat. Morning Plenary, I5
 Jones, Lee, J7
 Jovel, Jennifer, B1
 Jun, Alexander, C3
 Kanyi, Kamau, I3
 Kelly, Robert, K5
 Kempner, Ken, International Forum
 Keup, Jennifer Rinella, Poster
 Kezar, Adrianna, C7, D8, F4, I6
 Kim, Dongbin, G2
 Kim, Karen, E1
 Kim, Mikiyong, A3
 King, Jacqueline, D3, Saturday Morning Plenary
 King, Patricia, D1
 Kinser, Kevin, B3, G3
 Kirshstein, Rita, G5
 Kline, Kimberly, B6
 Knaus, Chris, C3, D1
 Kniazev, Evgeni, International Forum
 Knight, Michelle, D5
 Kohen, Andrew, G2
 Kozeracki, Carol, K2
 Kuh, George, A5, C8, F2
 Kulikova, Nadia, International Forum
 Lacy, Kirk, F7
 Laden, Beria Vigil, E1, I1, I4
 Lafer, Mark, Public Policy Forum
 Lanaan, Frankie Santos, A7, F3, I4, K1, Poster
 Langenberg, Donald, Public Policy Forum
 Lareau, Annette, J6
 Lawrence, Janet, International Forum
 Lee, Jenny, E1, F2, Poster, Saturday Open Conversation
 Lee, Samuel, D1
 Lee, Virginia, A4
 Lee, Wynetta, B2, Poster
 LeSage, Teresa, Poster
 Leslie, David, Public Policy Forum
 Levin, John, F1
 Levis, Marc, B3
 Lincoln, Yvonna, A1, C7

Lindholm, Jennifer, F5, Poster
 Littleton, Robert, I3
 Lockhart, Marilyn, F7
 Loeb, Jane, H2
 Loss, Christopher, E3
 Lundberg, Carol, A4
 Ma, Jing, International Forum
 Madson, Johan, F2
 Magolda, Marcia Baxter, D1
 Maher, Michelle, D7, J2
 Major, Claire, G3
 Maldonado-Maldonado, Alma, International Forum
 Mallon, William, J4
 Maloney, Patricia, Public Policy Forum
 Mangione, Terri, F8
 Mangum, Fletcher, Public Policy Forum
 Manning, Kathleen, G6
 Manns, Derrick, Public Policy Forum
 Marginson, Simon, International Forum, B8
 Marques, Claudio, International Forum
 Massa, Tod, Public Policy Forum
 Matesic, Janelle, Public Policy Forum
 Mazzeo, Christopher, H2, Saturday, Open Conversation
 McCall, Brian, G2
 McClafferty, Karen, A2, H3
 McClellan, George, International Forum
 McClendon, Shederick, C6, F2, I3
 McCormick, Alexander, H2, J5
 McDade, Sharon, H1, J3
 McDonough, Patricia, B5, H3, J6
 McInnis, Craig, Public Policy Forum, E5
 McKinney, Kristen, B3
 McLendon, Michael, Public Policy Forum, J8
 Meabon, David, International Forum
 Merchant, Betty, K7
 Mertz, Norma, F8
 Metcalfe, Amy Scott, K4
 Milem, Jeffrey, C2, G6, K5
 Mills, Michael, H4, K2
 Mina, Lilliana, Poster
 Minor, James, H1
 Mlinek, Dara, B3
 Mollis, Marcela, International Forum, F1
 Montez, Joni, J3
 Moore, Megan, B6
 Moreno, Melissa, K8
 Morgan, Ed, International Forum
 Morgan, Tony, International Forum
 Morphew, Christopher, F2, F4
 Mortimer, Kenneth, Public Policy Forum
 Moses, Yolanda, Saturday Morning Plenary
 Mothe, Svein, International Forum
 Mundy, Meaghan, F2
 Murphy, Lucretia, A2
 Murray, Frank Brush, Public Policy Forum
 Muthiah, Richard, B6
 Neumann, Anna, C7
 Nidiffer, Jana, A1, E3
 Noland, Brian, J8
 Nora, Amaury, H2
 Novak, Richard, Public Policy Forum
 O'Meara, KerryAnn, C2
 Ogren, Christine, A1
 Okolic, Andrew, International Forum
 Olivas, Michael, H6
 Opp, Ronald, C2, F5
 Ordorika, Imanol, International Forum
 Orr-Bement, Danielle, J8
 Oseguera, Leticia, E1
 Osci-Kofi, Nana, C2
 Outcalt, Charles, D7
 Overton, Betty, D8
 Palmer, Betsy, C5
 Palmer, James, B3
 Palmicro, Phyllis, Public Policy Forum
 Papalewis, Rosemary, K2
 Parada, Jairo, Public Policy Forum
 Parsad, Basmat, G5
 Parsons, Michael, J8
 Pascarella, Ernest, A3, A5, C5
 Payne, Jocelyn, B2
 Perez, Leonor, H8
 Permyth, Rachel, D7
 Perna, Laura, D5, D7, H5
 Peroazio, Thomas, K3
 Peterson, Marvin, International Forum, B5, H1
 Petrides, Lisa, A7, F3
 Phair, Chuck, Poster
 Phillips, Lance, B3
 Pierson, Christopher, A3, C5
 Pille, Ann, B1
 Pitre, Paul, I1
 Poch, Robert, Poster
 Popp, Jason, Public Policy Forum
 Postiglione, Gerry, International Forum
 Potts, Tony, International Forum
 Powers, Joshua, J8
 Pribbenow, Dean, A4
 Price, Doug, B7
 Pusser, Brian, International Forum, A2, E7
 Ramaley, Judith, Thursday Keynote
 Ramos, Enrique, International Forum
 Rasmussen, Christopher, G2
 Raveling, Joyce, C6, I2
 Rawls, Janita, F5
 Rendon, Laura, D5, E6
 Renn, Kristen, A1
 Reybold, L. Earle, E1
 Reynolds, Katherine, I7
 Rhee, Jeong-Eun, International Forum, I2
 Rhoades, Gary, International Forum, A3, B5, D2, E5, I6, Saturday Morning Plenary
 Rhoads, Robert, International Forum, A6, E1, Saturday, Open Conversation
 Richards, Sandra, C2
 Richlin, Laurie, G3
 Ridley, Dennis, Poster
 Robinson, Yolanda, A8
 Rosenbaum, James, B1
 Rosser, Vicki, B4
 Rosynsky, Michelle, Poster
 Rowley, Larry, I3, J5
 Rybalkina, Olga, International Forum
 Sabourin, Caryn, Poster
 Saggio, Joseph, E6, H3
 Salkever, Katya, F4
 Sax, Linda, A5
 Scaffide, Kyle, G2
 Schaller, Molly, Poster Session
 Schilling, Karl, Public Policy Forum
 Schroeder, Connie, J3
 Schuelz, Greg, E2
 Schuster, Jack, C1, E5
 Schwatz, Merrill, F7
 Seitz, Daniel, Poster
 Serow, Robert, J4
 Shaw, Kathleen, C4, E4, F6, Friday Presidential Address
 Shay, Pat, Poster Session
 Sheridan, Dennis, Poster
 Shoho, Alan, K7
 Shumar, Wesley, I8, J6
 Sierra, Arturo, G6
 Sima, Celina, Public Policy Forum
 Simon, Lou Anna K., Saturday Morning Plenary
 Slaughter, Sheila, C1, E7, F6, K4
 Smart, John, Saturday ASHE Publications, F3
 Smith, Daryl, C2, J3
 Smith, Iola Ragins, A5
 Smith, Scott, Poster
 Smith, Sheril, Poster
 Snyderman, Stuart, D2
 Soloman, Pearl, B3
 Solorzano, Danny, A2, H6
 Spearman, Patrick, I3, K3
 Sporn, Barbara, International Forum
 St. John, Edward, B6, D6
 Stage, Frances, D6
 Stahler, Gerald, D2
 Stark, Joan, C4, H4
 Stone III, James, K1
 Stoner, Carla, B1, H3
 Strauss, Linda, A3
 Subotzky, George, International Forum
 Sund, Andrew, Poster
 Suspitsin, Dmitry, Poster
 Suspitsina, Tatiana, International Forum
 Swaner, Lynn, Poster
 Talburt, Susan, International Forum, C7, I6
 Tapia, Andrea Hoplight, International Forum
 Tarsi, Lisa, K4
 Tash, William, D2
 Tato, Dawn, E6
 Taylor, Alton, Poster
 Teodorescu, Daniel, H4
 Teranishi, Robert, A2, B1, C3
 Terenzini, Patrick, Public Policy Forum
 Thelin, John, E3, Friday Presidential Address, I7
 Thomas, Scott, D4, H5
 Thompson, Carolyn, D4
 Tierney, William, Public Policy Forum, C7, D5
 Ting, Marie, K5
 Tinto, Vincent, H7
 Titus, Marvin, D5
 Toliver, Rita, I3
 Toma, J. Douglas, A5, F2, F4
 Townsend, Barbara, E4, I4
 Townzen, Linda, B8
 Travis, Jon, Poster
 Trice, Andrea, B8, C2
 Trudeau, Michelle, A3
 Turner, Bridget, J1
 Turner, Caroline, C2
 Turner, Sarah, I8
 Twale, Darla, Poster
 Twombly, Susan, B7, D7, F3
 Umbach, Paul, C2, G3, K5
 Valimaa, Jussi, F1
 Van Dijk, Angie, K8
 VanCollins, Jeff, K5
 VanDerLinden, Kim, F3, G1
 Villalpando, Octavio, H6, K8
 Vogelgesang, Lori, A6, C5, K6
 Volkswein, James Fredericks, A3, B4
 Wagoner, Richard, K4
 Walker, Geraldine, International Forum
 Walker, Christopher, International Forum
 Walker, Kristen, C5
 Walpole, MaryBeth, H8, I3, J6
 Wang, Zhongxu, International Forum
 Wang, Xin, International Forum
 Wang, Kim, International Forum
 Ward, Kelly, A6, B7, F5, K2
 Waters, Robert, K5
 Watson, Lcmuel, A8, G1, J7
 Weidman, John, International Forum
 Wells, Amy, A1
 Wilcox, Paul, International Forum
 Willenbrock, Lynn, Poster
 Wimberly, George, C3
 Winsten-Bartlett, Cheryl, F6
 Wolf-Wendell, Lisa, D7, F2, K2
 Wolniak, Gregory, A3, C5
 Wolverton, Mimi, B4, J2, J3
 Wood, Melinda, J4
 Woodward, Dudley B., International Forum, A3
 Wortman, Thomas, International Forum
 Yan, Fengquiao, International Forum
 Yeakey, Carol Camp, K3
 Yoo, Jung-Sup, H2
 Yoon, Mijung, K1
 Yosso, Tara J., H6
 Youn, Ted, I.K., E3
 Young, Steve, International Forum
 Young, Steven, J8
 Zamani, Eboni, H2, K1
 Zhang, Liang, D4
 Zhao, Chunmei, International Forum
 Zimber, Linda, G5
 Zuniga, Ximena, G6
 Zusman, Ami, Public Policy Forum

2000-2001 ASHE Board Members

President

Ann E. Austin
Michigan State University
aaustin@msu.edu

At-Large Member

Bruce Johnstone
SUNY-Buffalo
dbj@asu.buffalo.edu

Graduate Student Member

Shedrick A. McClendon
Vanderbilt University
sa.mcclendon@vanderbilt.edu

Immediate Past President

John Thelin
University of Kentucky
JThelin@pop.uky.edu

At-Large Member

Caroline S. Turner
Arizona State University
esturner@asu.edu

Legal Counsel

Doug Toma
University of Pennsylvania
toma@irhe.upenn.edu

President-Elect

William G. Tierney
University of Southern
California
wgtiern@usc.edu

At-Large Member

Wynetta Y. Lee
North Carolina State University
wynetta_lee@ncsu.edu

Executive Director

Julie A. Caplow
University of Missouri -
Columbia
caplowj@missouri.edu

At-Large Member

Jan Lawrence
University of Michigan
janlaw@umich.edu

Graduate Student Member

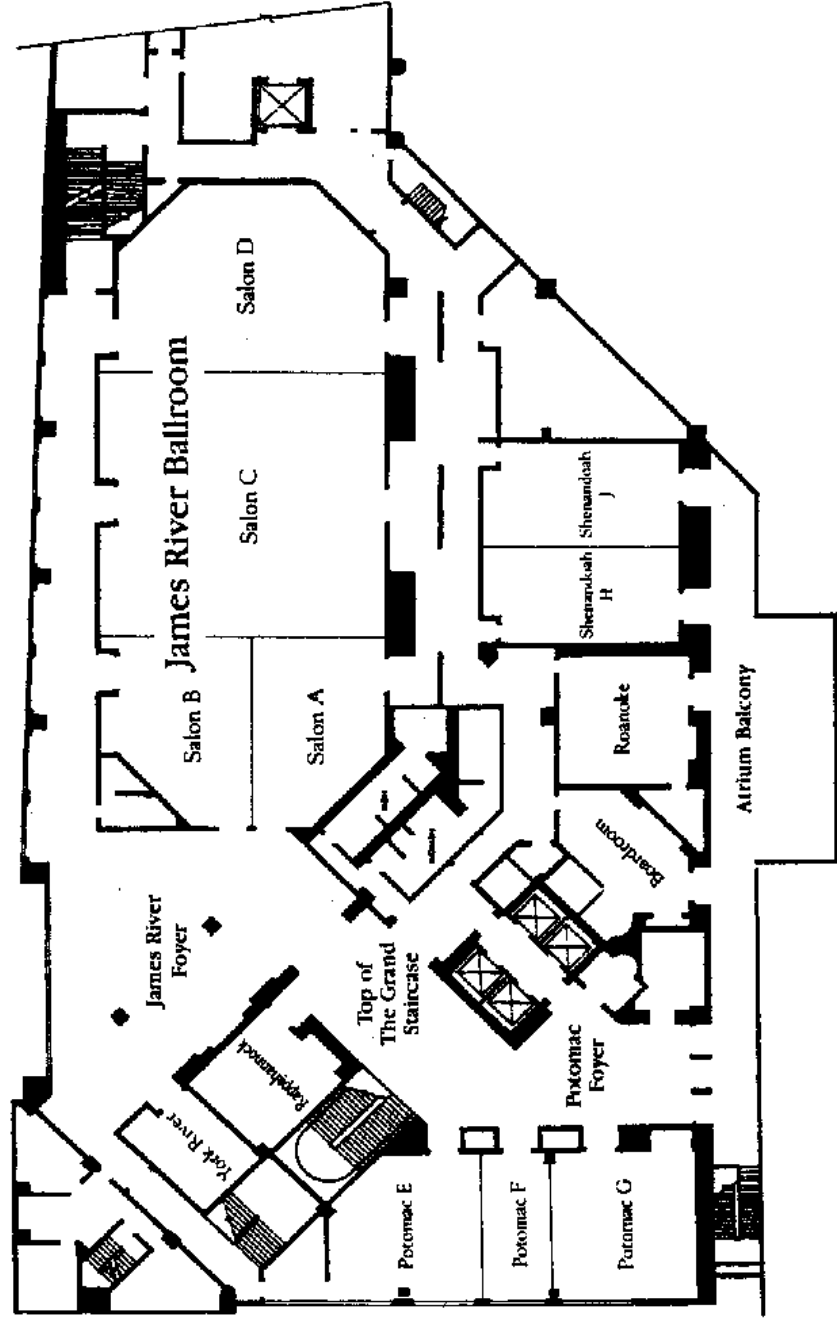
Joyce Raveling
University of Washington
raveling@u.washington.edu

ASHE PRESIDENTS

2000-2000	Ann E. Austin	1987-1988	Clifton Conrad
1999-2000	John Thelin	1986-1987	David W. Leslie
1998-1999	Laura Rendon	1985-1986	Robert Birnbaum
1997-1998	Yvonna Lincoln	1984-1985	Joan S. Stark
1996-1997	George Kuh	1983-1984	Kathryn M. Moore
1995-1996	Sheila Slaughter	1982-1983	Marvin W. Peterson
1994-1995	Patrick Terenzini	1981-1982	Joseph F. Kauffman
1993-1994	Elaine El-Khawas	1980-1981	Howard R. Bowen
1992-1993	Michael T. Nettles	1979-1980	Burton R. Clark
1991-1992	Shirley M. Clark	1978-1979	Robert O. Berdahl
1990-199	Judith Dozier Hackman	1977-1978	Kenneth P. Mortimer
1989-1990	Ernest T. Pascarella	1977-1976	C. Robert Pace
1988-1989	Ellen Earle Chaffec		

OMNI RICHMOND HOTEL

Second Floor Meeting Rooms



2001 ASHE Program Committee

Kathleen Shaw

Program Chair
Temple University
Kshaw001@nimbus.ocis.temple.edu

Jeff Bieber

Posters
University of Kentucky
Jpbieb01@pop.uky.edu

Gary Rhoades

International Program
University of Arizona
grhoades@mail.ed.arizona.edu

Jann Freed

Newcomers
Central College
FreedJ@central.edu

Cheryl Lovell

Graduate Student Policy Seminar
Denver University
cdlovell@du.edu

Anthony Lising Antonio

Symposia
Stanford University
aantonio@stanford.edu

Kevin Dougherty

Focused Dialogues
Columbia University
doug@exchange.tc.columbia.edu

James Earl Davis

Research and Scholarly Papers
Temple University
Kdavis21@temple.edu

Erin McNamara Horvat

Research and Scholarly Papers
Temple University
emcnamar@nimbus.temple.edu

Stas Preczewski

Evaluation
U.S. Military Academy
Zs0169@exmai.usma.army.mil

Joyce Raveling

Graduate Student Representative
University of Washington
Raveling@u.washington.edu

Shederick McClendon

Graduate Student Representative
Vanderbilt University
sa.mccleendon@vanderbilt.edu

Lisa Wolfe-Wendel

Roundtables
University of Kansas
lwolf@ku.edu

Chris Morphew

Roundtables
University of Kansas
morphew@ukans.edu

Ann E. Austin

ASHE President
Michigan State University
aaustion@msu.edu

Julie Caplow

ASHE Executive Director
University of Missouri-Columbia
caplowj@missouri.edu

ASHE Staff

Christine Ludeman, Administrative
Assistant