

ANNUAL REPORT 20 24



TABLE OF CONTENTS

About ASHE	4
Land Acknowledgment	5
Board of Directors	7
Board Actions	9
Staff	12
Committees	15
Membership	20
Membership Support Series	20
Membership Mondays	20
Welcome Wenesdays	21
Newcomers' Breakfast	21
New Doctoral Welcome	21
New Member Orientation	21
Considering Next Steps? How About A Doctoral Degree?	21
Annual Conference	23
Conference Committee Leadership Team	23
Conference Committee Members	24
Conference Highlights	25
Conference Accessibility Consultant	27
Conference Ombuds	27
Presidential Sessions	28
Featured Sessions	29
Conference Sponsors	30
Conference Quick Facts	31
Scholarships, Practice and Philanthropy to Support Indigenous Students in Minnesota	32
Awards Ceremony	33
Future Conference Locations	35
Professional Development Events	37
2024 Mid-Career Faculty Workshop	37
2024 Academic Leaders Workshop	37
2024 CIHE Networking Roundtables	38
2024 Graduate Student Policy Seminar	39
2024 Early Career Faculty Workshop	39
2024 International Scholars Workshop	40
2024 CEP Mentor-Protégé Program	41
2024 Research Workshops	42
2024 ASHE & SSN Workshops	44
Presidential Initiatives	46
ACPA-ASHE Presidential Symposium	46
ASHE Presidential Podcast	47
Presidential Commission on AI	49
Presidential Commission on Service	49
Council Events	51
<i>Review of Higher Education</i>	54
Subscribe2Open	54
2023-2024 <i>RHE</i> Editorial Team	55
Special Initiatives	57
Strategic Workgroup Doctoral Student Recruitment:	57
ASHE at 50 Fundraising Committee	57
Graduate Student Travel Scholarship	58
Financial Status of Association	60
Revenue by Category	60
Expense by Category	60
Unaudited Statement of Financial Position	61
Saving Responsibly	62



ABOUT ASHE

ABOUT ASHE

The Association for the Study of Higher Education (ASHE) is a scholarly community of nearly 2,000 members dedicated to advancing the study of higher education. Through research, dialogue, and professional development, we strive to foster a deeper understanding of equitable higher education that serves the public good. Our commitment to inclusivity and diversity is reflected in our programs, membership, and the engagement of graduate students and emerging scholars in our activities.

[Learn more about the association.](#)

ASHE is a vibrant scholarly community of over 2,000 members dedicated to advancing the study of higher education

Our Vision

Equitable higher education that serves the public good.

Our Mission

To foster scholarly inquiry for the purpose of increasing knowledge about and the understanding of higher education to enhance policy and practice.

Our Values

Inclusion, Equity, and Organizational Diversity:

Like the various institutions, organizations, and professional communities that ASHE members represent, our association is a byproduct of the colonial university system. ASHE recognizes this history and the importance of reckoning with the past. We acknowledge that our work toward inclusion, equity, and organizational diversity requires an ongoing commitment.

Integrity: ASHE members should conduct research and other inquiries in such a way as to maintain the integrity of the work, the people involved in the work, and the field of higher education.

Advancement of Knowledge: As a scholarly society, ASHE advances knowledge by supporting rigorous scholarship, fostering intellectual exchange, and promoting research that informs policy, practice, and equity in higher education globally.

[Learn more about ASHE at \[ashe.ws/about\]\(https://ashe.ws/about\).](#)

LAND ACKNOWLEDGMENT

Written by the ASHE 2023 Local and Community Engagement Committee

As we gathered for the ASHE 2024 Conference, it was important to acknowledge that we were on the traditional ancestral homeland of the Dakhóta Oyáte (Dakota people), the original inhabitants and stewards of the land and waterways of Minneapolis, MN. The cultural history of the Dakota people begins at the confluence of the Minnesota and Mississippi Rivers, a sacred place they call Bdóte, and is shared with the Anishinaabeg (Ojibwe) people, whose homelands extend northward from the city.

The land of the Dakota and Ojibwe people that now comprises the Minneapolis–Saint Paul metropolitan area was unfairly ceded through the major land cessions that coincided with the collapse of the fur trade. The Treaties of 1837 and 1851 with the Dakota people and the treaties of 1837 and 1855 with the Ojibwe people delivered unfulfilled promises of future payments of cash, goods, timber and land rights in exchange for the majority of land ownership in the Minneapolis–Saint Paul metropolitan area.

In addition to the Dakota and Ojibwe people, the Minneapolis–Saint Paul metropolitan area is home to one of the largest and most tribally diverse urban American Indian populations, numbering well over 35,000. The size of the Twin Cities' indigenous population boomed as a result of the 1956 Indian Relocation Act which defunded many reservation services and paid for relocation expenses to the cities in an attempt to assimilate the country's indigenous peoples.

Minnesota comes from the Dakota name for the area, Mni Sota Makoce — ‘the land where the waters reflect the skies.’ Today, Minnesota shares geography with eleven Tribal Nations, in addition to the Ho-Chunk, Cheyenne, Oto,

Iowa, Hidatsa, Arikara, A'aninin, Cree, Blackfeet, Assiniboine, and the Sac and Fox tribes all who also acknowledge Minnesota as important to their tribal histories.

We asked conference attendees to take time to reflect and acknowledge the land and resources we are using to sustain ourselves during the conference. We also asked attendees to devote time to learning about the histories and the experiences of the Dakota people in the Minneapolis area.

We acknowledge the painful history of genocide and settler colonialism that continues to impact Native and Indigenous communities today and how settler colonial logics are presently embedded in educational structures, policies, curriculum and procedures.

By offering this land acknowledgement, we affirm tribal sovereignty. We hold ourselves accountable as postsecondary educators to recognize and counter the historical and contemporary injustices, violence and inequity that continue to impact Indigenous people today. We commit ourselves to support movements of Indigenous sovereignty through mutually beneficial partnerships, research, policies, and practices in the field of higher education and beyond.

REFERENCES

Chosa, M. (2020, March 13). On this day: 1855 treaty signed between United States and Ojibwe bands. Leech Lake News. <https://www.leechlakenews.com/2018/02/22/day-1855-treaty-signed-united-states-ojibwe-bands/>

Nunpa, C. M. (2004). Dakota Commemorative March: thoughts and reactions. *American Indian Quarterly*, 216-237.

Why Treaties Matter (2023). Land cession treaties. Minnesota Indian Affairs Council. <http://treatiesmatter.org/treaties/land>



BOARD OF DIRECTORS

BOARD OF DIRECTORS

The members of the ASHE Board of Directors are the fiduciaries of the association. They are responsible for providing oversight, insight, and foresight of the organization's finances, strategic plan, and the Executive Director. There are nineteen members of the board of directors: nine association-wide elected directors, four elected Council Chairs, four board-appointed committee chairs, a board-appointed legal counsel, and the Executive Director.



JENI HART

President

University of Missouri



JASON GUILBEAU

Executive Director

ASHE



ANA MARTÍNEZ-ALEMAN

Immediate Past President

Boston College



EBONI ZAMANI-GALLAHER

President Elect

University of Pittsburgh



BLAKE C. BILLINGS

Legal Counsel

Kansas State University



KEN REDD

Budget, Finance, &
Compliance Committee
Chair

NACUBO



TOMIKA FERGUSON

Inclusion, Equity, and
Organization Diversity
Committee Chair

*Virginia Commonwealth
University*



FELECIA COMMODORE

At-Large Member

Old Dominion University



CAMERON BEATTY

At-Large Member

Florida State University

BOARD OF DIRECTORS



ANTONIO DURAN

At-Large Member
Arizona State University



JENNIFER JOHNSON

At-Large Member
Temple University



VIGOR LAM

Graduate Student Rep
Colorado State University



HANNAH HYUN WHITE

Graduate Student Rep
UC San Diego



BETH BUKOSKI

CAHEP Chair
Virginia Commonwealth University



NATASHA CROOM

CEP Chair
Clemson University



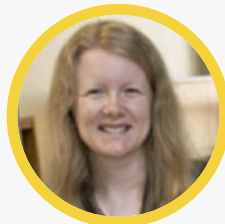
CHRISTINA YAO

CIHE Chair
University of South Carolina



KEVIN McCLURE

CPPHE Chair
University of North Carolina, Wilmington



HEATHER ROWAN-KENYON

Publications Committee Chair
Boston College

BOARD ACTIONS

The following actions were passed by the ASHE Board of Directors at meetings between November 2023-November 2024:

November 2023

Various committee appointments.

January 2024

Various committee appointments.

February 2024

Approval to publish Dr. Lori Patton Davis' 2018 Presidential Address as submitted in the *Review of Higher Education*.

Approval to table current proposal regarding organizational and entity structure of ASHE and ask the current organizational structure workgroup to reconsider their recommendations after inquiry regarding process followed for publication of missing presidential addresses in the *Review of Higher Education* is completed.

March 2024

Approval for the Inquiry Subcommittee to present the scope of work to our legal counsel for a quote on the cost of an inquiry.

Approval of the FY2023 Financial Report.

Approval for *RHE* opt in to the Subscribe 2 Open for a three year trial.

Approval for the general review of authority and scope of the Executive Director to be conducted as an external inquiry and the assessment of the climate in ASHE to be handled internally to ASHE.

Approval of the ASHE President and Publications Chair to ask the *Review of Higher Education* editorial board and leadership to assume the task of making decisions regarding the issue of publishing the missing presidential addresses in the journal.

April

Approval to use of up to \$10,000 to pay Tenenbaum Law Group PLLC to conduct an independent inquiry.

Various committee appointments.

May

Various committee appointments.

June 2024

Approval for ASHE President Jeni Hart to have the authority from the ASHE Board of Directors to meet with the ASHE staff to discuss the inquiry report and its recommendations.

Approval of a revision to the ASHE logo.

Approval to have the ASHE revised logo trademarked and a one-time allocation of \$3,000 to do so.

Various committee appointments.

BOARD ACTIONS

July 2024

Approval to charge the co-chairs of the Publications Committee to work with the editors of the *Review of Higher Education* to consider Recommendation #3 from the Inquiry Report to clearly delineate the locus of editorial discretion in journal publications.

Approval to charge the co-chairs of the Publications Committee to follow Recommendation #4 from the Inquiry Report to document new process for publishing presidential addresses, as specified in the addendum of the Editors' contracts, in ASHE's organizational policies and procedures.

Approval to generate an executive summary of the Inquiry Report, accompanied by a video overview of the report to make available on ASHE's website. The full report will be available behind member log-in and by request. Send an email to notify members of the materials on the website. Full report is defined as the 12 pages of the Inquiry Report text, exclusive of the appendices on pages 13-43. Prior to emailing the membership, notify those named in the report about the summary and video.

Approval of the addition of a Position Statement on Shared Governance to the list of statements to be written by the Position Taking Committee.

Approval to offer childcare during the 2025 Annual Conference and amending the ASHE FY2024 Budget to allocate \$6,000 to offer this service (which will be subsidized by use fees).

August 2024

Approval of the recommendation of the ASHE Legal Counsel Search Committee to appoint Dr. Blake Billings as ASHE Legal Counsel for the term of September 2024-November 2027.

Approval of the recommendation to appoint Dr. David (Dave) Nguyen as ASHE Budget, Finance, and Compliance Committee Chair for the term of November 2024-November 2027.

September

Approval to remove the statement "or Ombudsperson" from the ASHE Events Code of Conduct.

October 2024

Approval of the FY2025 budget as presented with a \$184,053 deficit.

Approval to move forward with the previously approved proposals from the organizational structure workgroup and entities workgroup with the exception of board changes and creation of the assembly.

Various committee appointments.



STAFF

STAFF

The ASHE Staff are responsible for the day-to-day operations of the Association.



JASON P. GUILBEAU

ASHE Executive Director

Jason is responsible for staff leadership, day-to-day operations, and execution of the association's strategic plan. He serves on the Board of Directors; Executive Committee; Scholarship Committee; Grants Committee; Site Selection Committee; and Inclusion, Equity, and Organizational Diversity Committee, in addition to serving as the association's Ethics Officer and member of the Ethics Committee. He also serves as staff partner to the Budget, Finance, and Compliance Committee; Advancement and Fundraising Committee; and Board Nominations Committee.

In 2024, Jason served on the ASAE: Center for Association Leadership Ethics Committee and Research Committee. Jason represented ASHE at the ASAE: Center for Association Leadership Annual Meeting & Expo, where he co-presented a session.



**ALICIA CASTILLO
SHRESTHA**

Associate Director for
Conference and Events

Alicia is the staff leader for the association's annual conference, professional development events, and other events hosted by the association. She serves as the staff partner to the Conference Committee Leadership Team, Conference Program Committee, Conference Attendee Engagement Committee, Conference Local and Community Engagement Committee, Professional Development Committee, and all professional development events.

In 2024, Alicia represented ASHE at the Council for the Study of Community Colleges (CSCC) Annual Conference and the ASAE: Center for Association Leadership Annual Meeting & Expo, where she co-presented a session. She also completed ASAE's Association Management Certificate Program.



STAFF



**ERIN M.
SATTERWHITE-DAVID**

**Assistant Director for
Membership**

Erin is the staff leader for the association's membership initiatives, including New Member Orientation, Membership Mondays, and conference newcomer events. She also serves as the lead for all assessment for the association and in 2024, prepared a nearly 200-page assessment report for association leaders. She serves as the staff partner to all Council Chairs, Council nominations committee, the Presidential Commission on Service, the Strategic Workgroup on Doctoral Student Recruitment, and affiliated ASHE groups.

In 2024, Erin represented ASHE at the ACPA: College Student Educators International Annual Convention and the ASAE: Center for Association Leadership Annual Meeting & Expo; she co-presented a session at each conference. She also completed ASAE's Association Management Certificate Program.



BRIANTÉ M. MEEKS

**Administrative and
Membership Services
Coordinator**

Brianté is the front-line staff leader and is likely the first team member you'll engage with via email, phone, or at the conference help desk. She is also responsible for the association's financial processes (including accounts receivable and payable), weekly listserv, membership database, reporting on event registrations, and supporting the team with various special projects.

In 2024, Brianté represented ASHE at the ASAE: Center for Association Leadership Annual Meeting & Expo; and she co-presented a session at each conference. She also completed ASAE's Association Management Certificate Program.



NAOMI RODRIGUEZ

**Assistant Director for
Communications**

Naomi led communications and marketing efforts for the association. She was responsible for the day-to-day management of the association's website, social media, email, and overall branding.

In 2024, Naomi represented ASHE at the ASAE: Center for Association Leadership Annual Meeting & Expo; and she co-presented a session at each conference. She also completed ASAE's Association Management Certificate Program.





COMMITTEES

COMMITTEES

Advancement and Fundraising Committee

Jeni Hart
 Sharon Holmes
 Joshua Patterson
 Chase McNamee

ASHE at 50 Fundraising Campaign Committee

Noah Drezner, Co-Chair
 Kimberly Griffin, Co-Chair
 Jason Guilbeau
 Ann Austin
 Michelle Asha Cooper
 Deborah Floyd
 Karen Miksch
 Victor Saenz
 Linda Sax
 Jeffrey Sun
 Leonard Taylor
 Jamie Washington

Presidential Commission on Artificial Intelligence

Benjamin Selznick, Co-Chair
 Laura Smithers, Co-Chair
 Michael Brown
 Denisa Gandara
 Chris Glass
 Demetri Morgan
 Karina Salazar
 Victoria Malaney-Brown
 Tatjana Titareva
 Naomi Rodriguez

Presidential Commission on Service

Margaret Sallee, Co-Chair
 LaShawn Washington, Co-Chair
 Tamara Bertrand Jones
 Timothy Cain
 David Nguyen
 Katherine Cho
 M. Yvonne Taylor
 Hannah Reyes

Awards Committee

Raquel Rall, Chair
 Jennifer Johnson
 Julie Park
 Matthew Witenstein
 Sylvia Martinez
 Eugene Parker
 Emily VanZoest

Disseration of the Year Committee

Cheryl Ching, Chair
 Jennifer Blaney
 Roy Chan
 Saralyn McKinnon-Crowley
 Lydia Ross
 Melissa Whatley
 Krystle Cobian
 Melvin Whitehead
 Heather McCambly
 Matthew Smith
 Jeremy Wright-Kim
 Mary Bodine Al-Sharif
 Selyna Perez Beverly
 Ali Watts
 Aireale Rodgers
 Ruby Robinson
 Amelia King-Kostelac

Budget, Finance, and Compliance Committee

Kenneth Redd, Chair
 Joseph Schaffer-Enomoto
 David Nguyen

CAHEP Academic Leaders Workshop

Lisa Wolf-Wendel, Chair

CAHEP Awards Committee

Ryan Miller, Chair
 Amy Collinsworth

thank you to the over 250 ASHE members who served the association through committees, workgroups, councils, and “*The Review’s*” editorial board in 2024. there are numerous opportunities to volunteer your time and service with ASHE.

Interested in getting involved? Learn more at ashe.ws/get-involved.

COMMITTEES



CAHEP Executive Committee

Beth Bukoski, Chair
 Lisa Wolf-Wendel
 Varaxy Yi
 Tamara Bertrand Jones
 Ericka Roland
 Amy Collinsworth
 Cydney Caradonna
 Aimee LaPointe Terosky
 Erin Doran
 Jodi Linley
 Ryan Miller

CAHEP Mid-Career Faculty Workshop

Aimee LaPointe Terosky, Chair

CAHEP Nominations Committee

Tamara Bertrand Jones, Chair
 Ryan Miller, Chair
 Jodi Linley

CEP Awards Committee

Leslie Ekpe
 Brittany Smotherson

CEP Executive Committee

Natasha Croom, Chair
 Jayla Marshall
 Leslie Ekpe

CEP Mentor-Protege Committee

Sergio Gonzalez, Co-Chair
 Chelsea Smith, Co-Chair

CIHE Awards Committee

Katie Koo, Chair
 Mary Bodine Al-Sharif
 Shinji Katsumoto

CIHE Executive Committee

Christina Yao, Chair
 Minghui Hou
 Brandon Smith
 HyeJin Yeo
 Mary Bodine Al-Sharif
 Shinji Katsumoto
 Katie Koo

CIHE International Scholars Workshop

Shinji Katsumoto, Chair
 Mary Bodine Al-Sharif, Co-Chair
 Katie Koo, Co-Chair
 Nicholas Stroup, Co-Chair

CIHE Networking Roundtables Committee

Minghui Hou, Co-Chair
 Brandon Smith, Co-Chair

CIHE Nominations Committee

HyeJin Yeo, Chair
 Christina Yao
 Brandon Smith

Conference Attendee Engagement Committee

Gina Garcia, Co-Chair
 Amanda Carr, Co-Chair
 Georgina Rivera-Singletary
 Marjorie Dorime-Williams
 Brittany Williams
 John Yang
 Andrea Rodriguez
 Tranquilino Hurtado
 Jarett Lujan
 Jasmine Victor
 Adeline De Angelis
 Beth Nahlik

Conference Committee Leadership Team

Hironao Okahana, Chair
 Gina Garcia
 Amanda Carr
 Tania Mitchell
 Tabatha Cruz
 Rosemary Perez
 Jonathan Pryor

Conference Evaluation Committee

Amber Dumford, Chair
 Bao Le

COMMITTEES

Conference Local and Community Engagement Committee

Tania Mitchell, Co-Chair
 Tabatha Cruz, Co-Chair
 Orkideh Mohajeri
 Travis Olson
 Elaine Ward
 Gresham Collom
 Jessica Proskin

Conference Program Committee

Rosemary Perez, Co-Chair
 Jonathan Pryor, Co-Chair
 Nathan Alleman
 Erin Doran
 Katherine Cho
 Jesse Ford
 Katie Koo
 Santiago Castiello
 Roshaunda Breeden
 Leticia Bustillos
 Tiffany Davis
 Jordan Harper
 Sondra Barringer
 Elizabeth Jach
 Angel Gonzalez
 Laura Irwin
 Chrystal George Mwangi
 Radomir Mitic
 Jeffrey Grim
 Lucy LePeau
 Rachel Smith
 Blanca Elizabeth Vega
 Jacqueline Mac
 Christen Priddie
 Sharon Stein
 Ashley Clayton
 Jeremy Wright-Kim
 Melissa Whatley
 Aireale Rodgers
 Kristyn Lue
 Awilda Rodriguez
 Lydia Ross
 Crystal Garcia
 Jason Garvey
 Brett Nachman
 Amanda Mollet
 Dajanae Palmer

CPPHE Executive Committee

Kevin McClure, Chair
 Vanessa Sansone
 Kelly Slay
 Eric Felix
 Sarah Young
 Leticia Bustillos

CPPHE Awards Committee

Kevin McClure, Chair
 Shonda Goward
 Samuel Snideman

CPPHE Nominations Committee

Kevin McClure, Chair
 Leticia Bustillos

Early Career Faculty Workshop

Tamara Bertrand Jones, Chair

Ethics Committee

James Earl Davis, Chair
 Patricia King
 Conor McLaughlin
 Sarah Hurtado
 Cameron Beatty
 Heather Cowherd
 Stephanie Aguilar-Smith
 Karen Miksch
 Steve Mobley

Executive Committee

Jeni Hart, President
 Kenneth Redd
 Jason Guilbeau
 Tomika Ferguson
 Blake Billings
 Ana Martinez-Aleman
 Eboni Zamani-Gallaher

Executive Director Evaluation Committee

Ana Martinez-Aleman, Chair
 Jeni Hart
 Kenneth Redd

Graduate Student Committee

Brian Le, Chair
 Bhavika Sicka
 Jessy Cheung
 John Williams
 Semonti Dey
 Hanna Kim
 William Walker
 Jimmy Aguilar

Graduate Student Policy Seminar

Eric Felix, Chair
 Meredith Billings
 Christopher Marsicano
 Rebecca Natow
 Karina Salazar
 Jonathan Turk
 Heather McCambly
 Samuel Snideman
 Elena Quiroz-Livanis
 Angel Gonzalez
 Rogelio Salazar
 Lauren Shook

Graduate Student Scholarship Committee

Marisa Lally, Chair
 Vigor Lam
 Jason Guilbeau
 Caleb Sewell
 Patrick Amponsah

Grants Committee

Travis York, Chair
 Tomika Ferguson
 Katherine Aquino
 Jessica Buckley
 Jason Guilbeau

Inclusion, Equity, and Organizational Diversity Committee

Tomika Ferguson, Chair
 Jason Guilbeau
 Gloria Anglon
 Milad Mohebbi
 Kat Stephens-Peace
 Christopher Sewell
 Antonio Duran

COMMITTEES

Indigenous Community Contribution Committee

Jason Guilbeau, Chair
 Brittany Anderson
 Gresham Collom
 Robin Minthorn
 Travis Olson
 Hannah Hyun White

Membership Committee

Marc Guerrero, Chair
 Monal Patel

Nominations Committee

Ana Martinez-Aleman, Chair
 Hugo Garcia
 Dion Harry
 Rebecca Crandall

Outstanding Book Award Committee

Chase Catalano, Chair
 Tonisha Lane
 Brian Pusser
 Paul Rubin
 Olivia Morales
 Doris Watson

Position Taking Committee

Cecilia Orphan, Chair
 Beth Bukoski
 Denisa Gandara
 Katalin Szelenyi
 Kristyn Lue

Professional Development Committee

Michael Williams, Chair
 Kyoungjin Jang-Tucci
 Krystal Williams
 Jeongeun Kim
 Jessica Pesce
 Kevin Bazner

Publications Committee

Heather Rowan-Kenyon, Chair
 Alyssa Rockenbach
 Demetri Morgan
 Ana Martinez-Aleman
 Thomas Nelson Laird
 Penny Pasque
 Karen Inkelas

Site Selection Committee

Cristobal Salinas, Chair
 Jason Guilbeau
 Michael Brown
 Nadeeka Karunaratne

Strategic Workgroup on Doctoral Student Recruitment

Radomir Mitic, Co-Chair
 Annie Wofford, Co-Chair
 Frimpomaa Ampaw
 Gloria Crisp
 Erin Doran
 Alex Lange
 Enyu Zhou
 Michael Goodman
 Steve Desir
 Joshua Wallace
 Erin Satterwhite-David
 Jill Perry

The Review of Higher Education Editorial Board

Thomas Nelson Laird, Editor
 Penny Pasque, Editor
 Angela Boatman
 Timothy Cain
 Milagros Castillo-Montoya
 Tania Mitchell
 Frederick Ngo
 Chrystal George Mwangi
 Monica Quezada Barrera
 Stephanie Nguyen
 Claudia García-Louis
 Nicholas Hillman
 Cindy Ann Kilgo
 Z Nicolazzo
 Robert Palmer
 Kelly Rosinger
 Xueli Wang
 Sonja Ardoin
 Dominique Baker
 Allison BrckaLorenz
 Brendan Cantwell
 Rozana Carducci
 Deborah Carter
 Ashley Clayton
 Regina Deil-Amen
 Antonio Duran
 Deryl Hatch-Tocaimaza
 Angela Locks
 Rebecca Natow
 Elizabeth Niehaus
 OiYan Poon
 Vanessa Sansone
 Barrett Taylor
 Stephanie Waterman
 Rachelle Winkle-Wagner
 Peter Bahr
 Vicki Baker
 Nolan Cabrera
 Jennifer Delaney
 Erin Doran
 Michelle Espino Lira
 Román Liera
 Judy Marquez Kiyama
 Demetri Morgan
 Rosemary Perez
 Tricia Seifert
 Annemarie Vaccaro

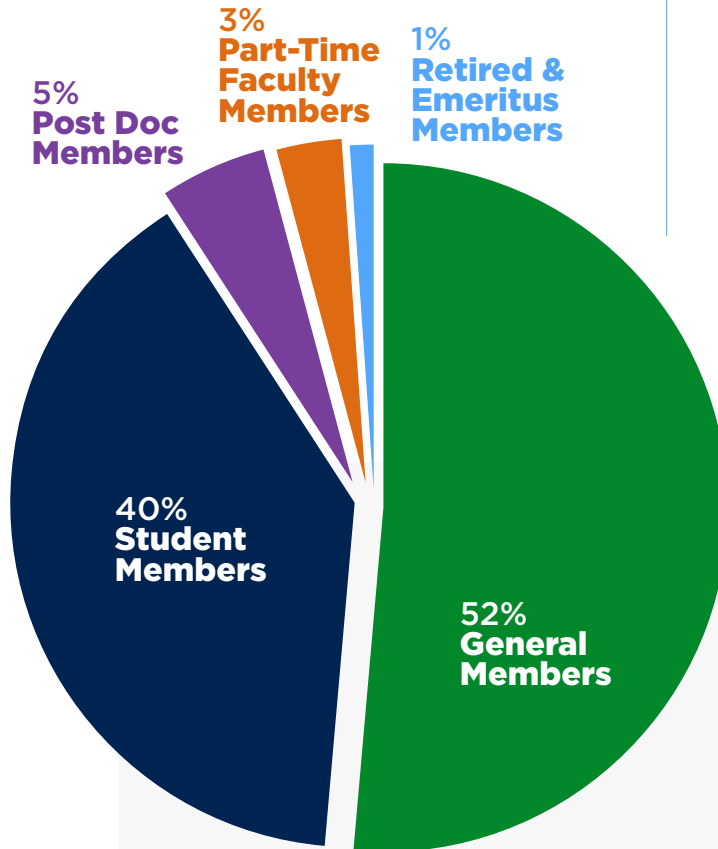
to learn more about
 committees and how to
 volunteer with ASHE,
 please visit:
ashe.ws/get-involved



MEMBERSHIP

MEMBERSHIP

Total ASHE Members: 1,675
(as of December 31, 2024)



in 2024, ASHE
welcomed 321
new members!

Membership Support Series

Since 2024, membership support series have been developed to support helping both potential, new and returning members maximize their ASHE experience.

Membership Mondays

"Membership Mondays" are a complimentary online learning series tailored for current and prospective members keen on exploring the breadth of ASHE offerings. This interactive format will delve into specific topics concerning membership opportunities and benefits, providing attendees with the chance to have their questions addressed.

Submitting a Call for Proposal

Leadership Pathways

Preparing Your Awards Nomination

ASHE Committees

112
ATTENDEES
IN 2024

MEMBERSHIP

24
ATTENDEES
IN 2024

Welcome Wednesdays

During this virtual session, ASHE Staff and Conference Leaders provided an overview of ASHE as an organization, the conference set up, and ways to get involved during your time in Minneapolis for the conference.

96
ATTENDEES
IN 2024

Newcomers' Breakfasts

ASHE Staff hosted two Newcomers' Breakfast to kick off the conference together. This informal breakfast was an opportunity to connect with other first-time attendees, learn about conference highlights, and ask questions.

14
ATTENDEES
IN 2024

New Doctoral Welcome: This session welcomes new graduate students in their first semester!

ASHE staff and current graduate student ASHE members provided a guide for new doctoral students about opportunities and resources ASHE provides. With the opportunity to ask questions and explore the benefits available to embark on the journey within our scholarly community, this was an excellent primer to ASHE.

48
ATTENDEES
IN 2024

New Member Orientation

As part of our commitment to our membership, ASHE is excited to invite new members to join us for our "New Member Orientation" series. In each session, ASHE Membership Coordinator Erin M. Satterwhite-David guides you through all the opportunities and resources included in your ASHE membership. In addition, providing both new and returning members alike with the opportunity to ask questions and explore the benefits available to embark on or renew their membership journey within our scholarly community.

Considering Next Steps? How About A Doctoral Degree?

This session, presented by staff and members of the Association for the Study of Higher Education (ASHE), explores the process and pathways to your terminal degree. A panel discussion provides a detailed overview of the graduate experience, career opportunities following graduation, and tangible examples of how continuing education can elevate your impact within higher education and beyond.

75
ATTENDEES
DURING ACPA
2024 ANNUAL
CONVENTION
PRESENTATION

22
ATTENDEES
DURING FALL
2024 VIRTUAL
SESSION



ANNUAL CONFERENCE

ANNUAL CONFERENCE

I AM A SCHOLAR

49th Annual Conference
November 7, 2024, Virtual Conference Day
November 20-23, 2024, Minneapolis, MN



Conference Committee Leadership Team



**HIRONAO (HIRO)
OKAHANA**

2024 Conference
Committee Chair

*American Council
on Education*



**ALICIA CASTILLO
SHRESTHA**

ASHE Associate Director
of Conference and Events

ASHE



GINA GARCIA

Attendee Engagement
Committee Co-Chair

*University of California,
Berkeley*



**ROSEMARY (ROSIE)
PEREZ**

Program Committee
Co-Chair

University of Michigan



JONATHAN PRYOR

Program Committee
Co-Chair

*California State University,
Fresno*



TABATHA CRUZ

Local and Community
Engagement Committee
Co-Chair

University of Minnesota



AMANDA CARR

Attendee Engagement
Committee Co-Chair

University of Missouri



TANIA MITCHELL

Local and Community
Engagement Committee
Co-Chair

University of Maryland

ANNUAL CONFERENCE

Conference Committee Members

ATTENDEE ENGAGEMENT COMMITTEE CO-CHAIRS:

Amanda Carr *University of Missouri*
Gina Garcia *University of California, Berkeley*

Members:

Adeline De Angelis *SIT Graduate Institute*
Marjorie Dorimé-Williams *MDRC*
Tranquilino (Kino) Hurtado *Salt Lake City Community College*
Jarett Lujan *Texas Tech University*
Beth Nahlik *Kent State University*
Andréa Rodriguez *Bill & Melinda Gates Foundation*
Jasmine Victor *University of Texas at San Antonio*
Brittany Williams *University of Vermont*
John Yang *University of California, Los Angeles*
Georgina Rivera-Singletary *Saint Leo University*

LOCAL AND COMMUNITY ENGAGEMENT COMMITTEE CO-CHAIRS:

Tabatha Cruz *University of Minnesota*
Tania Mitchell *University of Maryland*

Members:

Gresham Collom (Stockbridge-Munsee Mohican) *University of Minnesota*
Orkideh Mohajeri *West Chester University of Pennsylvania*
Travis Olson *Michigan State University*
Jess Proskin *University of Minnesota*
Elaine Ward *Merrimack College*

PROGRAM COMMITTEE CO-CHAIRS:

Rosemary (Rosie) Perez *University of Michigan*
Jonathan Pryor *California State University, Fresno*

Members:

Nathan Alleman *Baylor University*
Sondra Barringer *Southern Methodist University*
Roshaunda Breedon *North Carolina State University*
Leticia Bustillos *Bill & Melinda Gates Foundation*
Santiago Castiello *Seton Hall University*
Katherine Cho *Loyola University, Chicago*
Ashley Clayton *Louisiana State University*
Tiffany Davis *University of Houston*
Erin Doran *University of Texas at El Paso*
Jesse Ford *University of North Carolina at Greensboro*
Crystal Garcia *University of Nebraska-Lincoln*
Jason Garvey *University of Vermont*
Chrystal George Mwangi *George Mason University*
Angel Gonzalez *California State University, Fresno*
Jeffrey Grim *George Mason University*
Jordan Harper *Morgan State University*
Lauren Irwin *University of Tennessee, Knoxville*
Elizabeth Jach *State University of New York, System Administration*
Katie Koo *University of Georgia*
Lucy LePeau *Indiana University*
Kristyn Lue *University of Southern California*
Jacqueline Mac *Northern Illinois University*
Radomir Mitic *William & Mary*
Amanda Mollet *University of Kansas*
Brett Nachman *University of Pittsburgh*
Dajanae Palmer *University of Missouri-Columbia*
Christen Priddie *Indiana University*
Aireale Rodgers *University of Wisconsin*
Awilda Rodriguez *University of Michigan*
Lydia Ross *Arizona State University*
Rachel Smith *Iowa State University*
Sharon Stein *University of British Columbia*
Blanca Elizabeth Vega *Montclair State University*
Melissa Whatley *William and Mary*
Jeremy Wright-Kim *University of Michigan*

ANNUAL CONFERENCE



Conference Highlights

Land Acknowledgement: As we gathered for the conference, the Local and Community Engagement Committee led us in recognizing the traditional ancestral homeland of the Dakhóta Oyáte (Dakota people) and honored their enduring relationship with the land and waterways of Minneapolis.

Labor Acknowledgement:

The 2024 LCEC sought to respectfully acknowledge the unaddressed legacy of stolen labor that built and grew the economy and infrastructure of a nation that refused to recognize the humanity of enslaved persons, predominantly of African descent. Recognizing that Minnesota, though often viewed as distant from the institution of slavery, has a complex history intertwined with the legacies of forced labor and exploitation.

Beyond a Land Acknowledgement:

ASHE is committed to disrupting the entrenched nature of settler colonialism and engaging Indigenous Peoples in the places where we gather every day and annually. Through the work of the Strategic Workgroup on Land Tax, in October 2023, the ASHE Board of Directors voted to build upon land acknowledgments that often only considers or acknowledge the implications of settler colonialism in superficial ways to cultivate meaningful and authentic relationships with Indigenous Peoples that are rooted in truth-telling, respect, and reciprocity. The ASHE Board of Directors acknowledges that this work started with ASHE through the Land Acknowledgment Working Group and the establishment of the Local Community Engagement Committee (LCEC).

For 2024, ASHE donated \$2,000 to each of the following organizations:

[Minneapolis American Indian Center](#)

[Minneapolis's Native American Community Clinic](#)

[Red Lake Nation College Emergency Aid and Housing Fund](#)

ASHE deepened our relationship with one of these groups, the Minneapolis American Indian Center, by providing 12 members with an opportunity to visit the Center.

ANNUAL CONFERENCE



Witnessing: George Floyd Square:

Through a partnership with the Minnesota Agape Movement, ASHE members had the opportunity to participate in small group guided visits led by Agape leaders.

“Save the Boards” Exhibit and Discussion with Founder Kenda Zellner-Smith:

“Save the Boards” is a preservation project focused on collecting and preserving boards that were created after the murder of George Floyd in Minneapolis.

Celebrate Minneapolis/St. Paul:

Black, Indigenous, and People of Color-Owned Business Marketplace: The Marketplace aimed to celebrate the diversity of Minneapolis/St. Paul and its people, as well as enrich the conference experience and support local and community engagement.

Syllabus: The 2024 Syllabus provided a wide range of resources to read, listen, and view.

Spotify Playlist: Sounds of Minneapolis:

The playlist featured a diverse range of artists who have left a significant cultural and musical impact on the Minneapolis region, offering listeners a taste of the city’s vibrant and rich musical heritage.

Wellness Events: The 2024 conference continued the broader and more inclusive vision of wellness while encouraging attendees to plan for a conference experience that allows you to make the most of your time while honoring yourself. There were eight wellness-centered events offered:

- » YogASHE: Evening Yoga (Yin Yoga)
- » YogASHE: Morning Yoga (Vinyasa Flow)
- » Chat & Chill: Healthy and Loving Writing Spaces
- » Paws and Relax: A Stress-Free Break with Therapy Dogs and Cats
- » Chair Yoga & Stretching
- » ASHE Dash
- » Sound Bath and Meditation
- » Art-Based Chat & Chill: I Am A Scholar

ANNUAL CONFERENCE

Interactive Message Board:

Attendees participated in an interactive message board that encouraged attendees to reflect on pre-selected prompts on what it means to be a scholar.

Interaction Ribbons Name Badge Ribbons:

Name badge ribbons were available to indicate contact/social distancing requests.

Sensory Room: The Sensory Room was an intentional space for participants to take a break, relax, or interact with multiple sensory tools.

Mindfulness/Quiet/Spiritual Space:

This room was designated for participants to be in a quiet space. This room was also available for participants who observe prayer times.

Outstanding Reviewers: The ASHE Program Committee recognized ASHE members who provided outstanding reviews during this year's peer review process. The 15 Outstanding Reviewers provided thoughtful, critical, and helpful feedback on their assigned conference proposal reviews.

Stephanie Aguilar-Smith • Zarrina Azizova • Christopher Bennett • Meredith Billings • Gresham Collom • Antonio Duran • Vijay Kanagala • Nadeeka Karunaratne • Jonathan Lewis • Saralyn McKinnon-Crowley • Demetri Morgan • Rudisang Motshubi • Chantra Nhien • Paul Rubin • Damani White-Lewis

Conference Accessibility Consultant

For 2024, the ASHE Board of Directors approved funding for an Accessibility Consultant to support the staff in enhancing inclusion at the conference. Autumn partnered with the staff to review, update, and add to the resources and information available to



AUTUMN WILKE

Accessibility Consultant

members and conference attendees around accessibility. Autumn was available during the on-site conference in Minneapolis to assist with questions and support related to accommodations and general accessibility.

Conference Ombuds

To support ASHE's commitment to creating an inclusive and safe space for all and in line with its Code of Conduct and other applicable policies, ASHE will provide organizational ombuds services in connection with its Annual Conference. ASHE's goal is to have a conference that is as inclusive and accessible as possible for attendees. In addition, ASHE desires to improve the conduct and climate at future conferences with aggregate data and non-confidential feedback on trends and recommendations from the ombuds.

The ASHE Conference Ombuds is a neutral, confidential, informal, and independent resource who will be available to learn about conference attendees' concerns and assist them by identifying options and resources to resolve conflicts or issues – including harassment, discrimination, or any violation of the Code of Conduct.



COLETTE CARMOUCHE



MARY BLISS CONGER

ANNUAL CONFERENCE



Presidential Sessions

These sessions are selected by the ASHE President and coordinated by various groups within ASHE.

Louisiana: A Case Study of Higher Education Successes and Opportunities

Building New Foundations: Scholarship, Activism, and Praxis within the Arts
(coordinated by the Local and Community Engagement Committee)

The Role of Intermediary Public Policy Organizations in Translating Research into Policy During Turbulent Times (coordinated by the Attendee Engagement Committee)

Service and Community: Considering Our Obligations to Ourselves, Each Other, and the Profession (coordinated by the Presidential Commission on Service)

The Mid-Career Take-off (coordinated by the Attendee Engagement Committee)

I Am A Scholar, Too (coordinated by the Attendee Engagement Committee)

ASHE Inclusion, Equity, and Organizational Diversity Committee Town Hall (coordinated by the IEO Committee)

Toward Disability Justice: Challenging and Expanding Conceptions of Disability in Higher Education

The Journey of Streetwise Scholars
(coordinated by the Attendee Engagement Committee)

ASHE Presidential Commission on Artificial Intelligence: A Community Conversation
(coordinated by the Presidential Commission on AI)

Scholarly Soundwaves: Amplifying Reach through Podcasting (coordinated by the Attendee Engagement Committee)

ANNUAL CONFERENCE

Featured Sessions

These sessions are relevant to the mission of the association, including award recipients and groups within the association.

ASHE 2024 Bobby Wright Dissertation of the Year Presentation: Sponsored by the Penn State Center for the Study of Higher Education (coordinated by the Dissertation of the Year Committee)

Omg, Surviving Academia & Academic Hazing, What Matters? (coordinated by the Graduate Student Committee)

Entering a Post-DACA Era: Navigating Post-DACA Realities with and for Undocumented Students in Higher Education (coordinated by the Presidential Commission on Undocumented Individuals)

ASHE 2024 Outstanding Book Award Fireside Chat: "Asian American Is Not a Color: Conversations on Race, Affirmative Action, and Family" (coordinated by the Outstanding Book Award Committee)

The *Review of Higher Education*: Open Community Conversation on (In)Justice in Publishing (coordinated by the *RHE* Editors)

I Am A Scholar: Publishing in Higher Education Journals

Evidence to Action: Designing Research that Can Inform Policy

ASHE 2024 Barbara Townsend Lecture (coordinated by the CAHEP Awards Committee)

Program Committee Featured Sessions

These sessions were selected by the Program Committee Chairs based on recommendations made during the Call for Proposal process. These sessions were submitted through the proposal process and ranked very highly by reviewers.

Ideas and Ideologies in Higher Education Policy

The Politics of Community: Perspectives on Power, Conflict, and Change

Power Hour: Working Groups for Equity Advocacy and Activism

Responding Strategically as Equity-Centered Researchers in a Hostile Racial Climate



ANNUAL CONFERENCE

thank you to our conference sponsors

Sponsorship typically covers about 20% of our in-person event expenses, with the remainder covered by participant registration fees. Sponsor support allows us to keep our registration fees affordable and provide access for members at all career stages who rely on these events to learn about the newest research, for career advancement, and to network with colleagues and collaborators.

Conference Sponsors

Platinum



University of Missouri

Gold



Silver

Louise McBee Institute of Higher Education, University of Georgia • Higher, Adult, and Lifelong Education, Michigan State University • MDRC StataCorp

Basic

Center for the Study of Higher Education, Penn State • Department of Educational Leadership: Leadership, Learning Design, and Inquiry, University of South Carolina • Dedoose • Lynch School of Education and Human Development, Boston College • Rossier School of Education, University of Southern California

ANNUAL CONFERENCE



CONFERENCE QUICK FACTS

1,298

ATTENDEES

147

SESSION CHAIRS

597

PROPOSAL
REVIEWERS

150

SESSION
DISCUSSANTS

58%

ACCEPTANCE RATE
FOR PROPOSALS

accepted formats by type

338

RESEARCH
PAPERS

64

SCHOLARLY
PAPERS

46

INTERACTIVE
SYMPOSIA

12

PERFORMANCE,
VISUAL, AND
DIGITAL
SCHOLARSHIP

14

POSTER

8

SELF
DESIGNED
PAPER SESSIONS

82

WORKS IN
PROGRESS

3

WORKSHOPS

ANNUAL CONFERENCE

Scholarship, Practice, and Philanthropy to Support Indigenous Students in Minnesota: An ASHE Institute with Minnesota Tribal College Leaders

PRESENTED BY ASCENDIUM

Building upon the tremendous success of the Institute in 2021 in Puerto Rico and Institute in 2022 in Las Vegas, the Association for the Study of Higher Education (ASHE) is once again seeking to engage with local higher education leaders in our 2024 conference location, Minnesota. For this year's Institute, we aim to engage with Tribal Colleges, namely Red Lake Nation College (Red Lake, Minnesota and Minneapolis, Minnesota) and Leech Lake Tribal College (Cass Lake, Minnesota). We will also incorporate into our discussion two other tribal colleges: Fond du Lac Tribal and Community College (Cloquet, Minnesota) and White Earth Tribal and Community College (Mahnomen, Minnesota), broadly.

We are grateful to Ascendium for their continued support of this event once again this year.



Project Co-Chairs



NATALIE YOUNGBULL

Project Co-Chair
University of Oklahoma



ROBERTO OROZCO

Project Co-Chair
University of Minnesota-Twin Cities

Project Team Members

Christine Nelson *University of Denver*
Andrew Marx *Tufts University*
Robin Minthorn *University of Oklahoma*
Cristina Nader *Texas A&M University*
Gresham Collom *University of Minnesota*
Stevie Lee *University of Denver*
Sarena Gray *University of Oklahoma*
Emily Creamer *The Ohio State University*
Andrew Koricich *Alliance for Research on Regional Colleges*
Tarnjeet Kang *Minnesota State Colleges & Universities*

Thank you to the Tribal College Leaders who engaged with us through this Institute:

Fond du Lac Tribal and Community College

Anita Hanson *President*
Damien Paulson *Interim VP Student Services and Enrollment Management*
Roxanne Delille *Dean of Indigenous and Academic Affairs*
Sara Montgomery *Dean of Education*
Courtney Kowalczak *Environmental Institute Director*

White Earth Tribal and Community College

Anna Sheppard *President*
Tracy Diefenbach *Dean of Academics and Student Services*

Red Lake Nation College

Nadine King *Executive Director of Minneapolis Site*
Jeff Jones *Faculty-Math and Technology*
Tami Nendick *Dean of Academics*

Leech Lake Tribal College

Helen Zaikina-Montgomery *President*

Watch the presentation at ashe.ws/minnesota-institute

ANNUAL CONFERENCE

Awards Ceremony

ASHE Awards recognize exemplary achievements and contributions to the study of higher education through research, leadership, and/or service to the field and the Association. The ASHE membership plays an essential role in identifying persons who should be honored. Association-wide awards are reviewed by the Awards Committee, Dissertation of the Year Committee, or the Outstanding Book Award Committee, and recipients are recognized during the awards ceremony at the annual conference. Council awards are reviewed by each respective Council's awards committee, and award recipients are recognized during Council Pre-Conference events during the annual conference. All awards committees provide Nomination Evaluation Criteria, in addition to award descriptions, to provide greater transparency and clarity in the nomination process.



Irvin Lee (Bobby) Wright Dissertation of the Year Award

Jackie Pedota

*The Institutionalization Paradox:
How Investments in Campus
Cultural Centers Simultaneously
Marginalize Them*



Irvin Lee (Bobby) Wright Dissertation of the Year Award

Paris Wicker

*"Who Gets to be Well?" A Multi-
Method Social Network Analysis
of Well-Being for Black and
Indigenous College Students*



Distinguished Service Award

Kenneth E. Redd

*National Association of College
and University Business Officers
(NACUBO)*



Mentoring Award

Kristen A. Renn

Michigan State University



Outstanding Book Award

OiYan A. Poon

*Asian American Is Not a
Color: Conversations on Race,
Affirmative Action, and Family*



Research Achievement Award

Laura W. Perna

University of Pennsylvania



Early Career Award

Cinthya Salazar

*University of California,
Los Angeles*



Howard R. Bowen Distinguished Career Award

Amaury Nora

*University of Texas at
San Antonio*



Special Merit Award

**Pullias Center for Higher
Education**

University of Southern California



ASHE Presidential Medal

Tadd M. Johnson

University of Minnesota

Council Awards



Council for the Advancement of Higher Education Programs Barbara Townsend Lecture

Ellen M. Broido

Bowling Green State University



Council on Ethnic Participation Mildred García Award for Exemplary Scholarship: Junior Scholar

Stephanie Aguilar-Smith

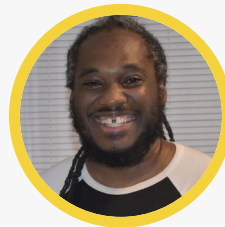
University of North Texas



Council on Ethnic Participation Founders' Service Award

Lissa Ramirez-Stapleton

*California State University,
Fullerton*



Council on Ethnic Participation Mildred García Award for Exemplary Scholarship: Senior Scholar

Sydney Freeman, Jr.

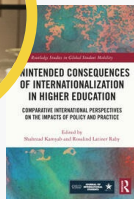
University of Idaho



Council on International Higher Education Significant Research on Higher Education Award: Best Book

**Shahrzad Kamyab and
Rosalind Latiner Raby**

*Unintended Consequences of
Internationalization in Higher
Education*



Council on International Higher Education Significant Research on Higher Education Award: Best Article

Pilar Mendoza

*"Activist Scholarship and
Borderland Feminism:
Resisting Coloniality in Liminal
Internationalization"*



Council on Public Policy in Higher Education Excellence in Public Policy Higher Education Award

Denisa Gándara

The University of Texas at Austin

ANNUAL CONFERENCE

Future Conference Locations

After nearly 18 months of work, ASHE announced the locations for our ASHE 2026, 2027, and 2028 conferences at the closing of the 2024 conference.



ASHE 51st Annual Conference

**Tuesday, November 3 -
Friday, November 6, 2026
San Juan, Puerto Rico**

Conference Location: Puerto Rico
Convention Center

Hotels: Sheraton San Juan, Hyatt House San Juan, Hyatt Place San Juan, Aloft San Juan

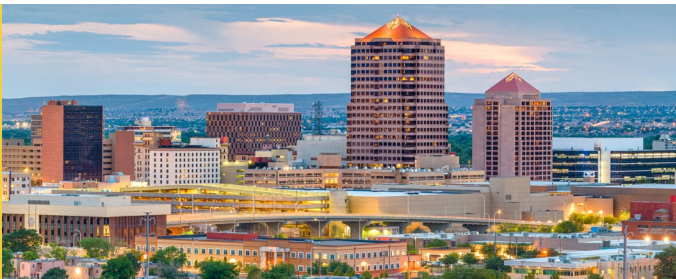


ASHE 53rd Annual Conference

**Wednesday, November 15 -
Saturday, November 18, 2028
Providence, Rhode Island**

Conference Location: Rhode Island
Convention Center

Hotels: Omni Providence, Hilton Providence, Graduate Providence



ASHE 52nd Annual Conference

**Wednesday, November 17 -
Saturday, November 20, 2027
Albuquerque, New Mexico**

Conference Location: Albuquerque
Convention Center

Hotels: Double Tree Albuquerque, Hotel Andaluz, The Clyde Hotel

thank you to the site selection committee

Cristobal Salinas Jr., *Chair, Florida Atlantic University*

Michael Brown, *University of Michigan*

Nadeeka Karunaratne, *University of Utah*

Jason P. Guilbeau, *ASHE Executive Director*

Read the full report from the Site Selection Committee at ashe.ws/future-conferences



PROFESSIONAL DEVELOPMENT EVENTS

PROFESSIONAL DEVELOPMENT EVENTS

2024 Mid-Career Faculty Workshop Wednesday, January 17, 2024

15
ATTENDEES

This workshop is intended for mid-career faculty including associate professors and those faculty members who are full professors, but with 15 years plus remaining prior to retirement. The goal is to provide workshop attendees with tools and resources to navigate the midcareer stage including advancement to full and/or administrative pursuits. The mid-career stage highlights priority mentoring opportunities, and the need for new and innovative faculty development supports that contribute to outcomes at the institutional, departmental, and individual levels.

Thank You to the Volunteer Presenters:

Beth E. Bukoski *Virginia Commonwealth University*

Vicki Baker *Albion College*

Chris Heasley *Saint Joseph's University*

Aimee Terosky *Saint Joseph's University*

Rich Reddick *The University of Texas at Austin*

Dawn Culpepper *University of Maryland*

Susan Drange *Stanford University*

Janée Burkhalter *Saint Joseph's University*

Jennifer Ng *University of Kansas*

Thank You to the Event Chair!



VICKI L. BAKER

Event Chair

Albion College

2024 Academic Leaders Workshop Thursday, January 18, 2024

25
ATTENDEES

This workshop is intended for faculty who are considering moving into leadership positions at the program, department, college, or university level. The goal is to provide workshop attendees with tools and resources to successfully navigate leadership positions including program coordinators, center directors, department chairs, dean, and other administrative pursuits.

Thank You to the Planning Committee and Presenters!

Christopher Morpew *Johns Hopkins University*

Kevin Kinser *Penn State University*

Susan Gardner *Oregon State University*

Jennifer Ng *University of Kansas*

Joy Gayles *North Carolina State University*

Eboni Zamani-Gallaher *University of Pittsburgh*

Thank You to the Event Chair!



**LISA WOLF-
WENDEL**

Event Chair

*The University of
Kansas*

PROFESSIONAL DEVELOPMENT EVENTS

2024 CIHE Networking Roundtables Thursday, April 4, 2024

27
ATTENDEES

The main goal of the CIHE Networking Roundtables is to facilitate new connections and potential relationships between faculty, staff, researchers, and students who are interested in international and comparative higher education. The Networking Roundtables value supportive, mutually beneficial, and authentic relationships where participants can build professional connections through a rewarding online experience. The Networking Roundtables are based on the commitment to offering a safe and supportive platform that will encourage and promote ongoing learning and growth, both personally and professionally, to all our participants.

Thank You to the Event Co-Chairs!



HANNAH HOU

Event Co-Chair

*Southern Illinois
University Carbondale*



BRANDON SMITH

Event Co-Chair

*Michigan State
University*

Thank You to the Volunteer Presenters:

Hannah Hou *Southern Illinois University*

Brandon R.G. Smith *Michigan State University*

Santiago Castiello-Gutiérrez *Seton Hall University*

Matthew A. Witenstein *University of Dayton*

Charles F. Mathies *Old Dominion University*

Sharon Stein *University of British Columbia*

Melissa Whatley *School for International Training*

Christina W. Yao *University of South Carolina*

Amy Scott Metcalfe *The University of British Columbia*

Gerardo L. Blanco *Boston College*

Natalie Cruz *Emory University*

PROFESSIONAL DEVELOPMENT EVENTS

2024 Graduate Student Policy Seminar Thursday, March 21, 2024

63
ATTENDEES

The Graduate Student Policy Seminar, presented by the ASHE Council for Public Policy in Higher Education (CPPHE), provides graduate students with opportunities to interact with researchers and policymakers who are knowledgeable about critical public policy issues related to higher education. The seminar also offers participants an opportunity to engage other advanced graduate students with similar interests and ambitions from universities across the nation.

Thank You to the Event Chair!



ERIC FELIX

Event Chair

San Diego State University

Thank You to the Planning Committee and Presenters!

Eric Felix, Event Chair *San Diego State University*

Heather McCambly *University of Pittsburgh*

Karina Salazar *University of Arizona*

Cassandra Arroyo *University of Michigan*

Lizeth I. Lizárraga-Dueñas *The University of Texas at Austin*

Elena Quiroz-Livanis *Massachusetts Department of Higher Education*

Lauren Mena Shook *University of Texas at Austin*

Paris D. Wicker *State University of New York at Buffalo*

Rebecca Natow *Hofstra University*

Chris Marsicano *Davidson College*

Jonathan Turk *Saint Louis University*

Ángel de Jesus González *Fresno State University*

Rogelio Salazar *University of California - Los Angeles*

Samuel Snideman *United Way of Central Indiana*

Eric Felix, PhD *Event Chair, San Diego State University*

Meredith Billings *University of Texas at Arlington*

Kevin McClure *University of North Carolina Wilmington*

2024 Early Career Faculty Workshop Friday, September 20, 2024

23
ATTENDEES

The Early Career Faculty Workshop is for new and aspiring faculty members. A diverse group of recently tenured faculty and senior scholars from around the country shared advice and expertise about how to craft and develop a research agenda, effectively teach and advise, earn tenure and promotion, and shape a successful and meaningful career.

Thank You to the Event Chair!



**TAMARA
BERTRAND
JONES**

Event Chair

*University of Illinois
Urbana-Champaign*

Thank You to the Volunteer Presenters:

Tamara Bertrand Jones *University of Illinois
Urbana-Champaign*

Beth Bukoski *Virginia Commonwealth University*

Christa J. Porter *Kent State University*

Christina Yao *University of South Carolina*

Vijay Kanagala *Salem State University*

Brian Burt *University of Wisconsin-Madison*

Claudia García-Louis *University of Texas San Antonio*

Bradley E. Cox *Michigan State University*

Erin Doran *University of Texas at El Paso*

Jesse Ford *University of North Carolina at Greensboro*

PROFESSIONAL DEVELOPMENT EVENTS

2024 International Scholars Workshop Thursday, October 3 & Friday, October 4, 2024

39
 ATTENDEES

In the first four years of the workshop (2019-2022), a diverse group of the participants shared their insights and experiences of how they maintained a prescribed research agenda, navigated between and within various identities that could extend beyond their nationality, maintained their well-being, and dealt with complex and nowadays politically-charged immigration and visa policies, which could be a sole factor in determining the post-graduation career choices and academic career success in the United States (Peri et al., 2016; Zong & Batalova, 2018). Above all, as panelists and participants shared about their experiences, struggles, hopes, and fears, a space was opened up to hear one's struggle as part of a larger thread; we hope and aspire for creating and maintaining this space exactly for this generative thinking and healing—a collective success.

Thank You to the Volunteer Presenters:

Shinji Katsumoto *University of Southern Mississippi*
Mary Ann Bodine Al-Sharif *University of Alabama at Birmingham*
Katie Koo *University of Georgia*
Nicholas R. Stroup *Ohio University*
Michaela Dengg *Ohio State University*
Kanggeon Kim *University of Oxford*
Naoko Nemoto *University of Georgia*
Jeongeun Kim *University of Maryland*
Melissa Whatley *College of William & Mary*
Allison Kranz *Lodestone Legal, LLC*
Faustina Mensah *Ohio University*
Dante Salto *University of Wisconsin-Milwaukee*

Thank you to the Event Chair and Co-Chairs!



**SHINJI
KATSUMOTO**

Event Chair

*University of Southern
Mississippi*



**MARY ANN
BODINE AL-
SHARIF**

Event Co-Chair

*University of Alabama
at Birmingham*



KATIE KOO

Event Co-Chair

University of Georgia



**NICHOLAS R.
STROUP**

Event Co-Chair

Ohio University

PROFESSIONAL DEVELOPMENT EVENTS

2024 CEP Mentor-Protégé Program Friday, November 8, 2024

59
PROTÉGÉS **21**
MENTORS

The CEP's Mentor-Protégé Program (MPP) is intended to provide members of racially/ethnically minoritized populations with mutually beneficial mentoring relationships. This year we are excited to share that the MPP will continue our new format of mentoring communities. To facilitate this process, groups of protégés were matched with mentors based upon primary scholarly and professional interests, elements of shared identity, and intended mentorship goals.

Thank you to the Event Chairs!



**CHELSEA T.
SMITH**

Event Chair
William and Mary



**SERGIO A.
GONZALEZ**

Event Chair
Duquesne University

Thank You to the Volunteer Presenters:

Chelsea T. Smith *William and Mary*
Sergio A. Gonzalez *Duquesne University*
Omi Salas SantaCruz *University of Utah*
Ray Mitic *William & Mary*
Callie Edwards *North Carolina State University*
Jocelyn Gutierrez *University of North Dakota*
Jayla Moody Marshall *North Carolina State University*
Antonio Duran *Arizona State University*
Gabe Bermea *The Rutgers Center for Minority Serving Institutions (CMSI)*
Tiffany Steele *Independent Consultant and Dissertation Editor*
OiYan Poon *Publication Pedagogy*
Crystal Garcia *University of Nebraska-Lincoln*
Chris Travers *University of Maryland College-Park*
Rosie Banda *TAMU-CC*
Alonzo Flowers III *UTSA*
Symone McCollum *Texas A&M University*
Habiba Braimah *Harvard University*
Jude Paul Dizon *California State University Stanislaus*
Kayon Hall *Kent State*
Gabriel Pulido *Lacrosse - Wisconsin*
Stephanie Cuellar *Texas Christian University*
Natalie A. Cort *William James College*
Frederick Ingram *Fairleigh Dickson*
Erin Doran *University of Texas at El Paso*
Charles H.F. Davis, III *University of Michigan*
Brittany Williams *University of Vermont*
Jorge Burmicky *Howard University*
Ashley Carpenter *App State*
Leslie Ekpe *Texas A&M University-Commerce*
Yovanna Pineda *University of Central Florida*

PROFESSIONAL DEVELOPMENT EVENTS

2024 Research Workshops Various Dates


227
 ATTENDEES

The ASHE Research Workshops are intended as spaces for ASHE members to engage with and explore cutting-edge research methodologies and research management in ways that center critical methods and inquiry in research. Each workshop will be led by leading scholars in the field. Originally designed for additional methods training for graduate students, the workshops have evolved to cater to a diverse range of participants, including early-career scholars, mid-career scholars, and/or senior scholars.

HOSTED VIRTUALLY

Radically (Re)Imagining Qualitative Methodologies

Thank you to the workshop facilitators:

Nicole Harris

Dannemart Pierre *Cornell University*

Brittney Plascencia Saldana *Whittier College*

Blackness as Otherwise: Black Studies in Performance, Visual and Digital Scholarship

Thank you to the workshop facilitators:

Charles Davis *Center for the Study of Higher and Postsecondary Education*

Candace Hall *Southern Illinois University Edwardsville*

Keon McGuire *North Carolina State University*

Wilson Okello *The Pennsylvania State University*

Trauma Informed Qualitative Research Methods: Promoting Well-Being and Social Learning through Research

Thank you to the workshop facilitator:

Kamaria Porter *The Pennsylvania State University*

Understanding the What, How, and Why of Participatory Action Research

Thank you to the workshop facilitator:

Cinthya Salazar *Texas A&M University*

Identifying Students' Social Networks through Online Surveys: An Introduction to Traditional and Emerging Methods of Name Generators and Interpreters

Thank you to the workshop facilitators:

Nidia Banuelos *University of Wisconsin-Madison*

Ross Benbow *University of Wisconsin-Madison*

Kyoungjin Jang-Tucci *University of Wisconsin-Madison*

Advanced Quantitative Methods for Policy Research in Higher Education

Thank you to the workshop facilitators:

Taylor Odle *University of Wisconsin-Madison*

PROFESSIONAL DEVELOPMENT EVENTS

CONTINUED

2024 Research Workshops Various Dates

Transformative/Emancipatory research in higher education

Thank you to the workshop facilitator:
Evelyn Vázquez *University of California,
 Riverside*

Exploring Social Justice through Mixed Methods Research: An Interactive Workshop

Thank you to the workshop facilitators:
Jerrel Moore *Prairie View A&M University*
Stella Smith *Prairie View A&M University*

Introduction to Phenomenology and using Post-Intentional Phenomenology Methods in Higher Education

Thank you to the workshop facilitators:
Ben Marcy *University of Minnesota*
Caolfionn Yenney *University of Minnesota, Twin Cities*
Evan Witt *University of Minnesota Twin Cities*

**Hosted in person during the annual
conference and sponsored by**



A Non-Technical and Critical Introduction to Natural Language Processing, Language Models, and Text-Centered Artificial Intelligence

Thank you to the workshop facilitators:
Kyoungjin Jang-Tucci *The University of
 Wisconsin Madison*

Automating Data Retrieval for Enhanced Reproducibility: Using Stata and R to 'Automagically' Download Labeled IPEDS Data

Thank you to the workshop facilitators:
Matthew J. Capaldi *University of Florida*

Reframing Research Participants as Scholars: Engaging in Critical Race Methodologies to Interrupt the Status Quo of Knowledge Production

Thank you to the workshop facilitators:
Nancy Acevedo *California State University,
 San Bernardino*
Anthony Roberson *California State University,
 San Bernardino*
Leon P. Strayer *Cal State Polytechnic - Pomona*
Sailesh Maharjan *California State University,
 San Bernardino*

PROFESSIONAL DEVELOPMENT EVENTS

2024 ASHE & SSN Workshops Multiple Dates

65
ATTENDEES

ASHE and the Scholars Strategy Network (scholars.org) partnered to present three individual professional development sessions geared toward building skills with writing and media engagement. The Graduate Student Policy Brief Writing was offered in tandem with registrants for the Graduate Student Policy Seminar.

Sponsored by:



HOSTED VIRTUALLY

- » Graduate Student Policy Brief Writing Workshop
- » Policy Brief Writing Workshop
- » Media Interviews & Building Relationships with Reporters Workshops
- » Hosted in person during the annual conference:
- » Op-Ed Writing Workshop
- » Policy Brief Writing Workshop



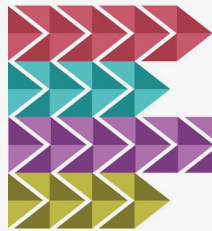


PRESIDENTIAL INITIATIVES

PRESIDENTIAL INITIATIVES



2024 ACPA/ASHE PRESIDENTIAL SYMPOSIUM



Backward and Forward: **Reflection, Action,
and Inspiration for Scholarship and Praxis**

Friday, **11 October** 2024 // 1:00–4:30pm ET

ACPA-ASHE Presidential Symposium

With ACPA currently celebrating its 100th Anniversary and ASHE celebrating its 50th Anniversary in 2025, these milestones provide an opportunity for our scholarship and praxis to re-discover our connections through reflection, action, and inspiration. The 2024 ACPA-ASHE Presidential Symposium will provide an opportunity for participants to engage in discussions about where we've been, where we are, and where we're going as a field and as individuals as it relates to free speech, activism, anti-DEI legislation, and career sustainability. The Symposium will also offer attendees intentional reflection time through discussion questions and resources provided through an attendee workbook.

ACPA-ASHE Presidential Symposium

Tim Cain *University of Georgia*

Stephen C. Sutton *UC Berkeley*

Karen Francis-Begay (Diné)

Kristine L. Bowman *Michigan State University*

Jordan Shelby West *George Washington University*

TJ Stewart *Iowa State University*

Hannah Hyun White *University of Arizona*

Alex C. Lange *Colorado State University
-Fort Collins*

Rosemary J. Perez *University of Michigan*

Ray Quiroigco *Rhode Island School of Design*



JENI HART

ASHE President



RACHEL AHO

ACPA President

PRESIDENTIAL INITIATIVES



HOSTED BY

FELECIA
COMMODOREROYEL
JOHNSON

ASHE Presidential Podcast

The intent of the 2024 conference theme, “I Am A Scholar,” is to not only consider our own identities as scholars, but to consider who we are as a scholarly community. As you reflect upon your own ideas about what makes you a scholar, I invite you to consider dismantling the hierarchies that have been constructed about who is worthy of the title “scholar.” I believe these often create barriers to better policy, practice, and scholarship.

This is a project to welcome and learn from a community of scholars from a variety of institution types, associations, policy settings, unique identities, geographies, methodologies, epistemologies, positions within and beyond academe, and myriad other locations.

Collectively, we can stake our claim as scholars who continue to transform higher education through the work we do.

Moreover, if inclusion, equity, and organizational diversity are among our values, we must be willing to consider the ways in which assumptions about who can and should be a scholar limit what we can accomplish as a community. We must critically interrogate the exclusionary practices in which we engage regarding be(com)ing a scholar and how those practices compromise the integrity of our scholarship. We become better scholars by doing so—and in that way, we create better scholarship. Higher education, and the communities in which we work and live, are faced with vexing, complex, and wicked problems. We need all of our scholarly selves to find solutions and actively work toward our purpose and the purpose of higher education.

With this theme in mind, the 2024 podcast series will focus on what it means to be a scholar in this socio-political moment and consider our responsibilities as scholars within this context and moment.

PRESIDENTIAL INITIATIVES

ASHE Presidential Podcast Episodes

Episode 1: I Am A Scholar



Jeni Hart, PhD

2024 President
Association for the Study of Higher Education

Dean and Vice Provost
University of Missouri

Episode 2: The New Generation of Scholars



Gaurav K. R. Harshe

AACTE Holmes Scholar
University of South Carolina



April N. Horne

PhD Candidate
The University of Arizona



Nadeeka Karunaratne, PhD

Postdoctoral Researcher
University of Utah

Episode 3: Creating a Scholarly Identity



Wayne Black, PhD

Assistant Professor
University of Cincinnati



Daniel Corral, PhD

Assistant Professor
University of Toronto



Marjorie L. Dorimé-Williams, PhD

Senior Research Associate
MDRC

Episode 4: A Scholar and a [Insert Role Here]



Shelvia English, PhD

Vice President, Diversity, Equity and Inclusion
American Dental Education Association



Leonard Taylor, Jr., PhD

Associate Professor & Director
Indiana University - Bloomington



OiYan Poon, PhD

Senior Research Fellow, Education Equity
NAACP Legal Defense Fund
Thurgood Marshall Institute

Episode 5: A Lifetime of Being a Scholar



James Earl Davis, PhD

Bernard C. Watson Endowed Chair and Professor
Temple University



Sharon Fries-Britt, PhD

Distinguished University Professor
University of Maryland

listen to all podcast
episodes at
[ashe.ws/news/
podcasts](https://ashe.ws/news/podcasts)

PRESIDENTIAL INITIATIVES

Presidential Commission on AI

Aligned with the ASHE 2024 Conference Theme, “I Am A Scholar,” this Presidential Commission brings together scholars from a variety of institution types, roles, and experiences to address the implications of Artificial Intelligence on the work of the Association and its members. The Commission is charged with helping the ASHE community better understand how the Association should respond to AI and then recommend programs, resources, and/or tools to guide action. The work of the Commission will help advance several of ASHE’s strategic goals to live our values, including organizational justice; build organizational capacity; support the development of scholarship; and connect scholarship to policy and practice. The report is not intended to be a position-taking statement; however, it may serve as a guide for future positions the Association may communicate. In addition, the group will host a presidential session at the ASHE 2024 conference to engage membership with this topic.

Benjamin Selznick (Co-Chair) *James Madison University*

Laura Smithers (Co-Chair) *University of Nevada-Reno*

Naomi Rodriguez *ASHE Communications Coordinator (ASHE Staff Partner)*

Denisa Gandara *University of Texas-Austin*

Karina Salazar *University of Arizona*

Demetri Morgan *Loyola University Chicago*

Chris Glass *Boston College*

Victoria Malaney-Brown *Columbia University*

Michael Brown *Iowa State University*

Tatjana Titareva *James Madison University*

Presidential Commission on Service

Building upon the ASHE 2024 Theme, “I am a Scholar,” our strategic goals of living our values, building organizational capacity, and engaging and supporting all higher education scholars, the group is charged with drafting a report that responds to the following questions: How is service an act of scholarship? How do we sustain a largely service/volunteer-led organization with complicated conceptualizations of service? The report can help the association think about its future, and as an ancillary benefit, help our campus communities value service. In addition, the group will host a presidential session at the ASHE 2024 conference to engage membership with this topic.

Margaret Sallee (Co-Chair) *University at Buffalo*

LaShawn Washington (Co-Chair) *University of Oklahoma*

Erin Satterwhite-David *ASHE Membership Coordinator (ASHE Staff Partner)*

Tim Cain *University of Georgia*

Katherine Cho *Loyola University Chicago*

Tamara Bertrand Jones *Florida State University*

Cherry Lim *University of Massachusetts Lowell*

David Nguyen *Ohio University*

Yvonne Taylor *Rice University*

Hannah Reyes *Ohio State University*





COUNCIL EVENTS

COUNCIL EVENTS

Coordinators' Corner: Internationalizing the Curriculum

HOSTED BY CAHEP

This interactive session will challenge participants to reflect on the need to internationalize our curricula due to the increase in international students in our programs. Participants will have the opportunity to learn about internationalization strategies as well as engage in activities to help them guide their own internationalization efforts. Presented by: Gudrun Nyunt, Northern Illinois University.

Coordinators' Corner: Is This Normal?

HOSTED BY CAHEP

This interactive session will include findings from Dr. Leslie Jo Shelton's research about the role and tasks of student affairs and higher education program coordinators followed by a reflective prompt and discussion. Participants will have the opportunity to share their experiences, learn more about whether their work expectations are "normal," and what alternatives may exist. Presented by: Leslie Jo (LJ) Shelton, University of Arkansas & Beth Bukoski, CAHEP Chair.

Coordinators' Corner: Programmatic External Reviews

HOSTED BY CAHEP

Gain valuable insights into the external review process and hear directly from colleagues who have successfully navigated this work. This session will provide practical guidance and foster discussions around best practices to help enhance your program's review efforts. Presented by: Paul Eaton, Sam Houston State University & Erin Doran, CAHEP Pre-Conference Chair.

Preparing for the Academic Year: Workshop for New and Continuing Higher Education Program Coordinators

HOSTED BY CAHEP

Join us for an insightful online workshop designed to provide a space for higher education program coordinators to discuss, share resources and best practices, and problem-solve emerging and ongoing challenges. Build a supportive community and enhance your efforts in coordinating higher education programs! Presented by: Beth Bukoski, CAHEP Chair & Erin Doran, CAHEP Pre-Conference Chair.

CIHE 2024 Pre-Conference Keynote Address

HOSTED BY CIHE

"Am I A Scholar?": Time, Knowledge, and Decoloniality

In his keynote, Dr. Riyad A. Shahjahan explored the question, "Am I A Scholar?" and its connection to scholarly identity, the geopolitics of knowledge, and the colonial legacies of time in global higher education. Shahjahan challenged dominant academic norms and emphasized care as a scholarly practice, advocating for radical self-care and collective well-being among marginalized scholars. He encouraged participants to envision a more inclusive and transformative academic environment that values diverse ways of knowing and being.

COUNCIL EVENTS

2024 ASHE CIHE Webinar: Best Article Award Recipient “Intersections of Identity and Status in International Students’ Perceptions of Culturally Engaging Campus Environments”

HOSTED BY CIHE

Hosted discussion for the Council on International Higher Education (CIHE) on the 2023 Significant Research in International Higher Education: Best Article Award. Join the authors Chris R. Glass, Tang T. Heng, & Minghui Hou as they highlight goals to creating a more equitable and inclusive campus environment by centering the voices of international students and illuminate the heterogeneity of their perceptions of the campus environment. Moderated by CIHE Executive Committee Member, Shinji Katsumoto.

Strategies for Submitting an ASHE Proposal for International Research: Call For Proposal Webinar

HOSTED BY CIHE

Organized by the ASHE Council on International Higher Education. Presented by CIHE Pre-Con Co-Chairs Katie Koo and Santiago Castiello-Gutiérrez, as well one of the ASHE 2024 Program Committee Section Co-Chairs for International Higher Education, Radomir (Ray) Mitic. Whether you’re a past presenter or a new attendee interested in submitting to this pre-conference section, this session provides strategies and practical tips to enhance your proposal submission experience.

2024 ASHE CIHE Webinar: Best Book Award Recipient “Constructing Student Mobility” HOSTED BY CIHE

Hosted discussion for the Council on International Higher Education (CIHE) on the 2023 Significant Research in International Higher Education: Best Book Award “Constructing Student Mobility: How Universities Recruit Students and Shape Pathways Between Berkeley and Seoul” by Stephanie K. Kim. Moderated by CIHE Chair, Christina W. Yao.

2024 ASHE CIHE Webinar: “International Student Mental Well-being: Beyond the Single Story”

HOSTED BY CIHE

Hosted discussion and webinar for the Council on International Higher Education (CIHE) on the book “International Student Mental Well-being: Beyond the Single Story”. Book edited by: Drs. Gudrun Nyunt, Katie Koo, Patricia Witkowsky, & Mindy Andino.





REVIEW OF HIGHER EDUCATION

REVIEW OF HIGHER EDUCATION

ASHE's journal, *The Review of Higher Education*, continues to publish four issues per year under the leadership of editors Thomas Nelson-Laird and Penny Pasque, in conjunction with the Editorial Leadership Team and Editorial Board.



PENNY A. PASQUE

Editor

The Ohio State University



THOMAS F. NELSON LAIRD

Editor

*Indiana University
Bloomington*

You can learn more about their work from the *RHE* Annual Report available: ashe.ws/rhe.

Subscribe2Open

In March 2024, the ASHE Board of Directors approved the recommendation from the *RHE* Editors to opt the *Review of Higher Education* into Subscribe to Open (S2O) for a three year period beginning in January 2025. S2O is an equitable open access model for scholarly journals that enables subscription journals to open access to their current content without Article Processing Charges (APCs). Through the support of MUSE's vast community of publishers and libraries worldwide, the S2O program will open a wealth of vital scholarship in disciplines not well served by other open access (OA) models. The JHUP/Muse S2O Program makes open access to the current year's content of participating journals.



REVIEW OF HIGHER EDUCATION

2023-2024 RHE Editorial Team

Editors

Penny Pasque
Thomas Nelson Laird

Associate Editors

Angela Boatman
Timothy Cain
Milagros Castillo-Montoya
Tania Mitchell
Federick Ngo
Chrystal George Mwangi

Graduate Student Editorial Team

Monica Quezada Barrera, Senior Managing Editor
Stephanie Nguyen, Managing Editor
Miras Sharipov, Managing Editor
Arman Zhumazhanov, Managing Editor
Mianmian Fei, Editorial Assistant

Editorial Board

Claudia García-Louis
Nicholas Hillman
Cindy Ann Kilgo
Z Nicolazzo
Robert Palmer
Kelly Rosinger
Xueli Wang
Sonja Ardoin
Dominique Baker
Allison BrckaLorenz
Brendan Cantwell
Rozana Carducci
Deborah Carter
Ashley Clayton
Regina Deil-Amen
Antonio Duran
Deryl Hatch-Tocaimaza
Angela Locks
Rebecca Natow
Elizabeth Niehaus
OiYan Poon
Vanessa Sansone
Barrett Taylor
Stephanie Waterman
Rachelle Winkle-Wagner
Peter Bahr
Vicki Baker
Nolan Cabrera
Jennifer Delaney
Erin Doran
Michelle Espino Lira
Román Liera
Judy Marquez Kiyama
Demetri Morgan
Rosemary Perez
Tricia Seifert
Annemarie Vaccaro





SPECIAL INITIATIVES

SPECIAL INITIATIVES

Strategic Workgroup Doctoral Student Recruitment

The Strategic Workgroup on Doctoral Student Recruitment worked throughout 2024 to address ASHE's Strategic Goal #6 to "Support faculty to develop future scholars." Specifically, this group worked to understand the state of higher education doctoral program recruitment with special attention to differences by institution and program type and to develop a proposal for ASHE leadership that encompasses ways in which ASHE can better support program coordinators and faculty with doctoral student recruitment. Their final report will be presented to the ASHE Board of Directors in 2025.

Radomir "Ray" Mitic (Co-Chair) *William & Mary*
Annie Wofford (Co-Chair) *Florida State University*

Erin Satterwhite-David (Staff Liaison) *ASHE*
Frimpomaa "Frim" Ampaw *Morgan State University*

Gloria Crisp *Oregon State University*

Steve Desir *University of Southern California*

Erin Doran *University of Texas at El Paso*

Jill Perry *Carnegie Project on the Education Doctorate*

Michael A. Goodman *University of Texas at Austin*

Alex Lange *Colorado State University*

Joshua Wallace *University of Louisville*

Enyu Zhou *Council of Graduate Schools*

The **Drs. Kristen Renn & Melissa McDaniels Dissertation Research Grant** provides dissertation support for a doctoral student studying sexual orientation and/or gender identity in higher education or mentorship in higher education. The 2024 Renn & McDaniels Dissertation Research Grant was first awarded in 2024.

ASHE at 50 Fundraising Committee

The ASHE at 50 Fundraising Committee is charged with raising \$100,000 to support ASHE members. The group was formed in 2023 and has continued work leading up to ASHE's 50th Annual Conference in 2025.

Co-Chairs

Noah D. Drezner *Teachers College, Colombia University*

Kimberly Griffin *University of Maryland, College Park*

Staff partner

Jason P. Guilbeau *Association for the Study of Higher Education*

Committee Members

Karen Miksch *University of Minnesota*

Jeffrey Sun *University of Louisville*

Deborah Floyd *Florida Atlantic University*

Linda Sax *UCLA*

Victor Sáenz *University of Texas at Austin*

Jamie Washington *The Washington Consulting Group*

Michelle Asha Cooper *Lumina Foundation*

Leonard Taylor *Indiana University Bloomington*



SPECIAL INITIATIVES

Graduate Student Travel Scholarship

One of the great aspects of the annual ASHE conference is how it has become a place for graduate student professional development. Whether it is presenting a poster or paper, networking with faculty members who they have read, or attending sessions or a pre-conference, ASHE has been integral at helping aspiring scholars begin their careers.

In order to support graduate student growth and development, ASHE established the Graduate Student Travel Scholarship program in 2008 and as of 2023, had awarded more than 334 scholarships. Over the past few years, ASHE members increased their support of graduate student members and we have been able to support more students than ever before.

Your gift to the ASHE Graduate Student Scholarship Fund is not only another sign of the strength of our scholarly community as an intergenerational home for the creation of new knowledge in our field but is also 100% tax-deductible.

\$10,990

FUNDS RAISED
IN 2024

25

SCHOLARSHIPS
AWARDED





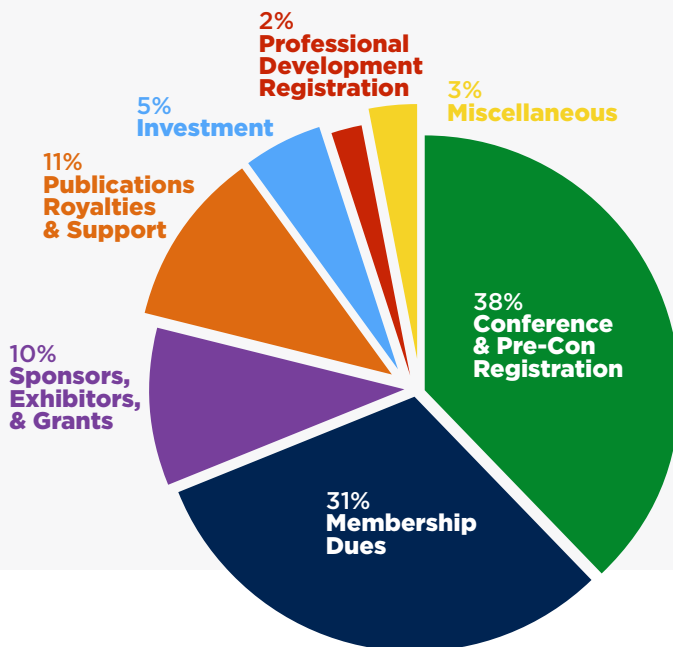
FINANCIAL STATUS OF ASSOCIATION

FINANCIAL STATUS OF ASSOCIATION

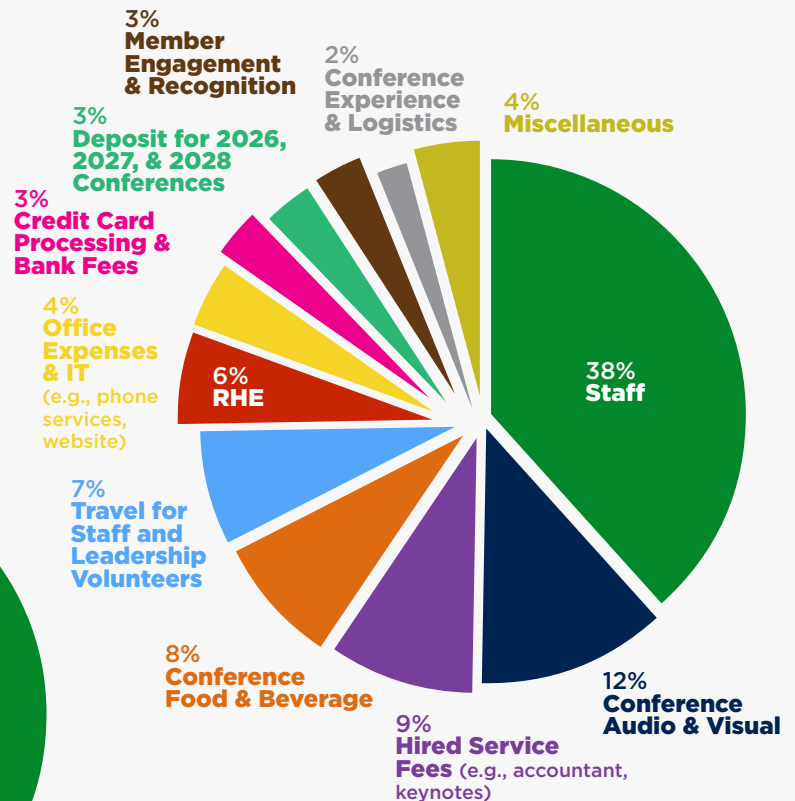
The financial status of ASHE remains healthy, albeit the impacts of changes in higher education funding and the increases in the cost to operate continue to be felt by the association. In 2024, the Board of Directors approved, for the second year, to use reserve funds to supplement the budget of the association.

As of December 31, 2024, the association held approximately \$1.4 million in net assets, which is down about \$200,000 from 2023. Short term savings reached 80% of our six-month threshold and long term savings reached 60% of our 12-month threshold. These savings have been used over the past few years to supplement the budget of the association.

Revenue by Category



Expense by Category



FINANCIAL STATUS OF ASSOCIATION

Unaudited Statement of Financial Position

	As of Dec 31, 2024	As of Dec 31, 2023
Assets		
Checking Accounts	39,070	135,615
Pre-Paid Expenses	34,637	5,991
Short Term Savings	98,911	395,970
Long Term Savings	603,085	717,112
Board Restricted Funds	309,432	295,592
Donor Restricted Funds	22,872	19,566
Total Assets	1,408,007	1,569,846
Liabilities		
Current Liabilities	8,283	(9,362)
Long Term Liabilities	110,611	113,906
Total Liabilities	118,894	104,544
Equity		
Unrestricted Net Assets	1,320,848	1,410,077
Restricted Net Assets (Donor)	22,872	19,566
Net Income	(219,055)	(85,923)
Total Equity	1,124,665	1,343,720
Total Liabilities and Equity	1,243,599	1,448,265

FINANCIAL STATUS OF ASSOCIATION

Saving Responsibly

To remain financially healthy, the ASHE Board of Directors has set a benchmark to have a savings fund of 18 months of operation expenses, or approximately \$1.4 million. This helps to ensure our financial health in the event of a world-altering event, such as the COVID-19 Pandemic, or to use as strategic investments.

The association's savings are placed with two socially responsible firms:

C-Note is a firm that provides investments in Community Development Financial Institutions (CDFIs). CDFIs are community-based banks that provide capital to underserved communities of color, women, and other BIPOC communities that are typically bypassed by commercial banks. Recipients of CDFI funds use them to start businesses in their local areas, thus providing entrepreneurial opportunities to start businesses in their areas and creating new jobs for underserved folks.

[Learn more at mycnote.com](https://mycnote.com)

Gold
Transparency
2024

Candid.

ASHE's financial
information is publicly
available through
Candid (formerly
GuideStar)
[guidestar.org/
profile/52-1071242](https://guidestar.org/profile/52-1071242)

Impax specializes in socially responsible, fossil fuel-free investment in U.S. and non-U.S. stocks and bonds. Their investment philosophy focuses on companies that “are well positioned to benefit from the transition to a more sustainable economy.” They also focus on organizations that rank highly on environmental, social, and governance (ESG) issues. In addition, in recent years the firm has begun to focus on firms that are owned or managed by women.

[Learn more at impaxam.com](https://impaxam.com)



ashe.ws

9450 SW Gemini Drive
PMB 88737
Beaverton, Oregon 97008
United States
202.660.4106