



# Mold - Automation

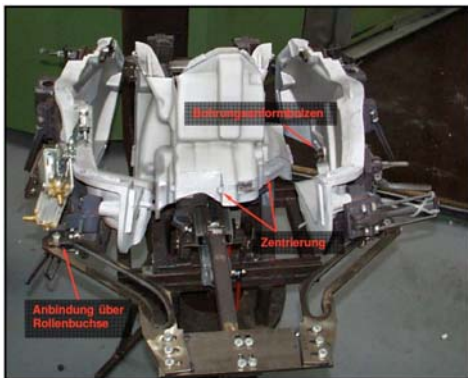


Extrusions for Automobiles

Plastics for Lighting Applications

Rotomolding for Vehicles

Pneumatic opening / closing of molds



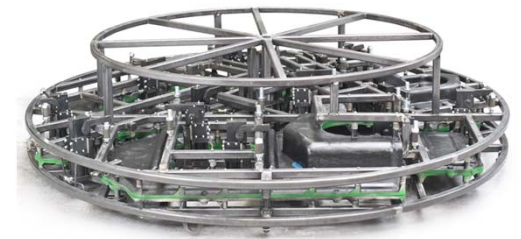
Source: Elkamet

Pneumatic slide / insert and ejector pins

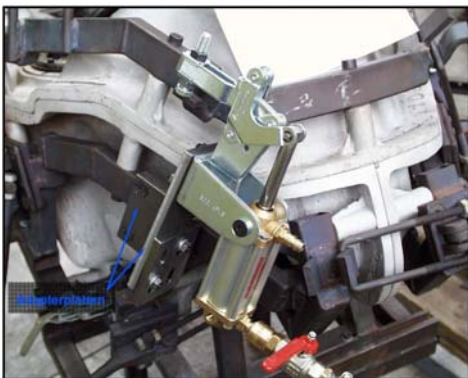


Source: maus-gmbh.de

Pneumatic spider multiple mold clamping

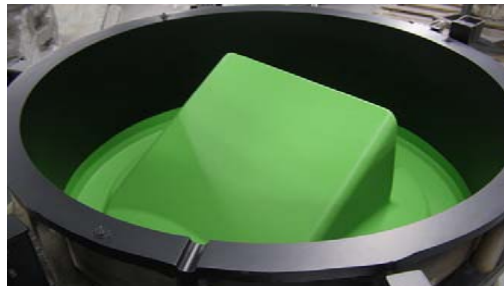


Source: maus-gmbh.de



Source: Elkamet

Permanent coating



Source: Norstar

Drop box



Source: ThePlasticProfessionals.com



Extrusions for Automobiles



Plastics for Lighting Applications

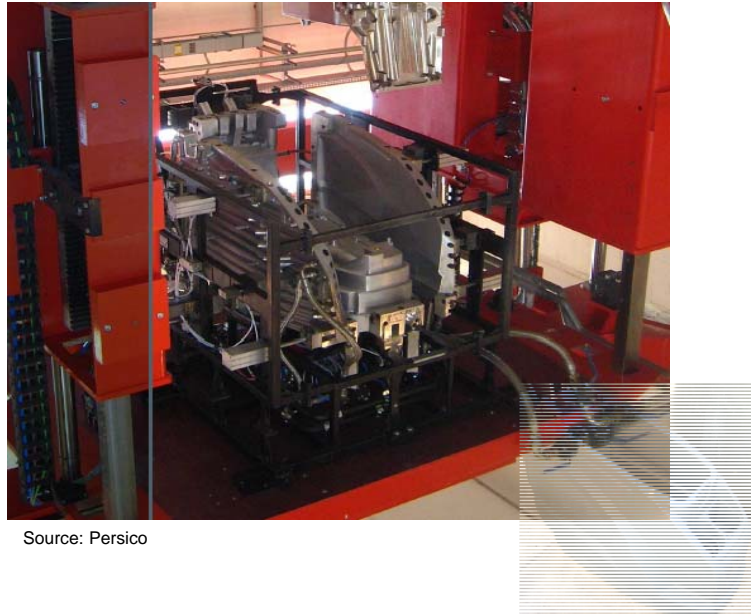


Rotomolding for Vehicles

## Mold - Automation

*elkamet*

### Liquid heated molds



Source: Persico

### Electric heated molds



Source: Persico



Extrusions for Automobiles



Plastics for Lighting Applications



Rotomolding for Vehicles

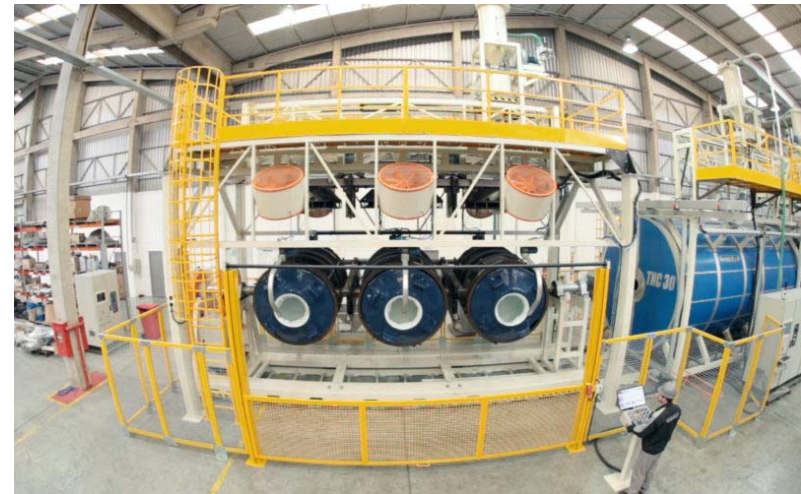
## Machine & Process - Automation



- Quick mold / spider change systems
- Fully automated rotomolding machines



Source: Persico



Source: Rotoline





Extrusions for Automobiles



Plastics for Lighting Applications

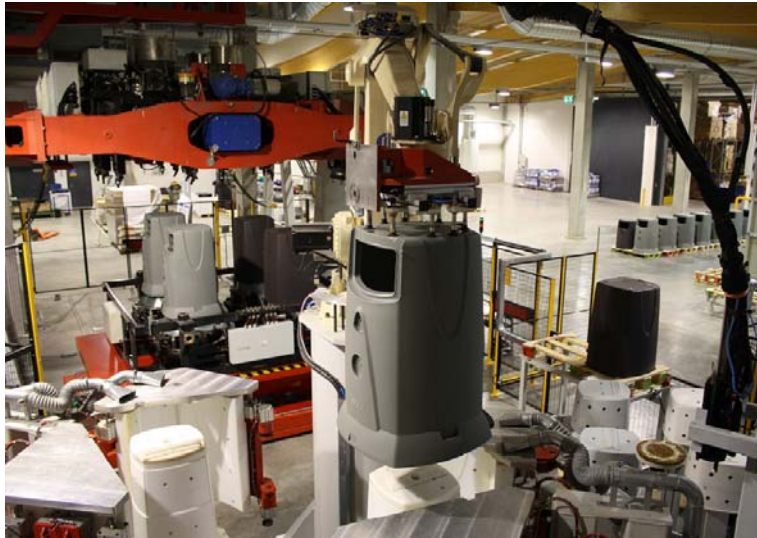


Rotomolding for Vehicles

## Post mold - Automation



### Demolding, trimming & storage



Source: Persico





Extrusions for Automobiles



Plastics for Lighting Applications



Rotomolding for Vehicles

## Post mold - Automation

*elkamet*

### Quality control

#### Helium leak test station



Source: Marposs.com

#### Vision sensor quality control



Source: Elkamet