

# SAFETY WORKSHOP

## MOLDS AND MACHINES

---



ARM Fall Meeting

September, 2016

New Orleans, LA

# Two Safety Approaches

- Safety for Personnel
- Safety for the Molds

# Hand Safety

- Check for burrs
- Use thick cloth glove
- Touch all spots operators will touch
- Operate clamps
- Open and close mold
- Heavy loose pieces?

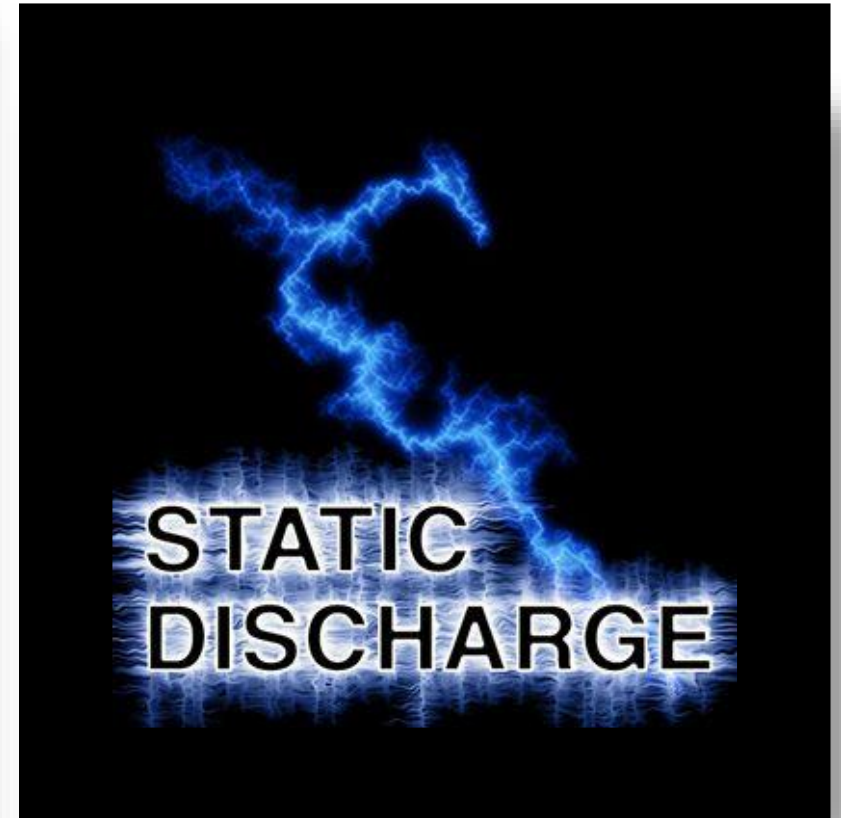


# Venting With Steel Wool





# Static



# Static Discharge on Steel Wool

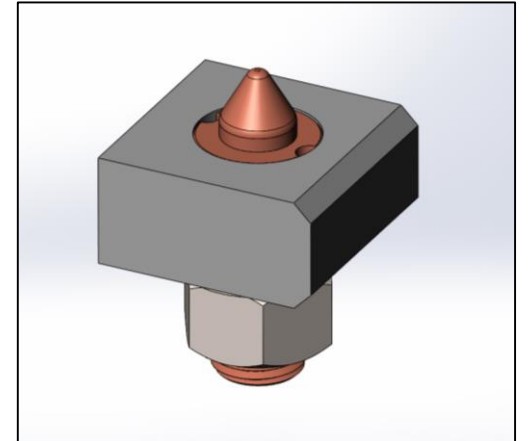
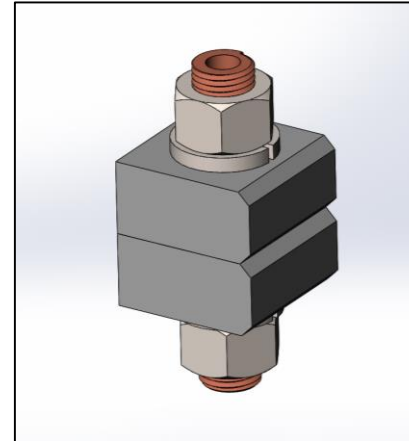
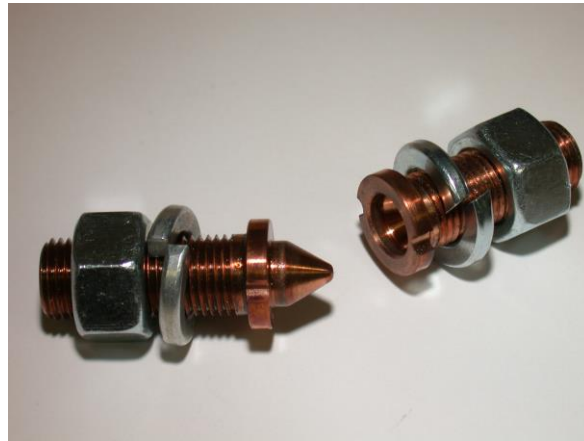




# Static reduction



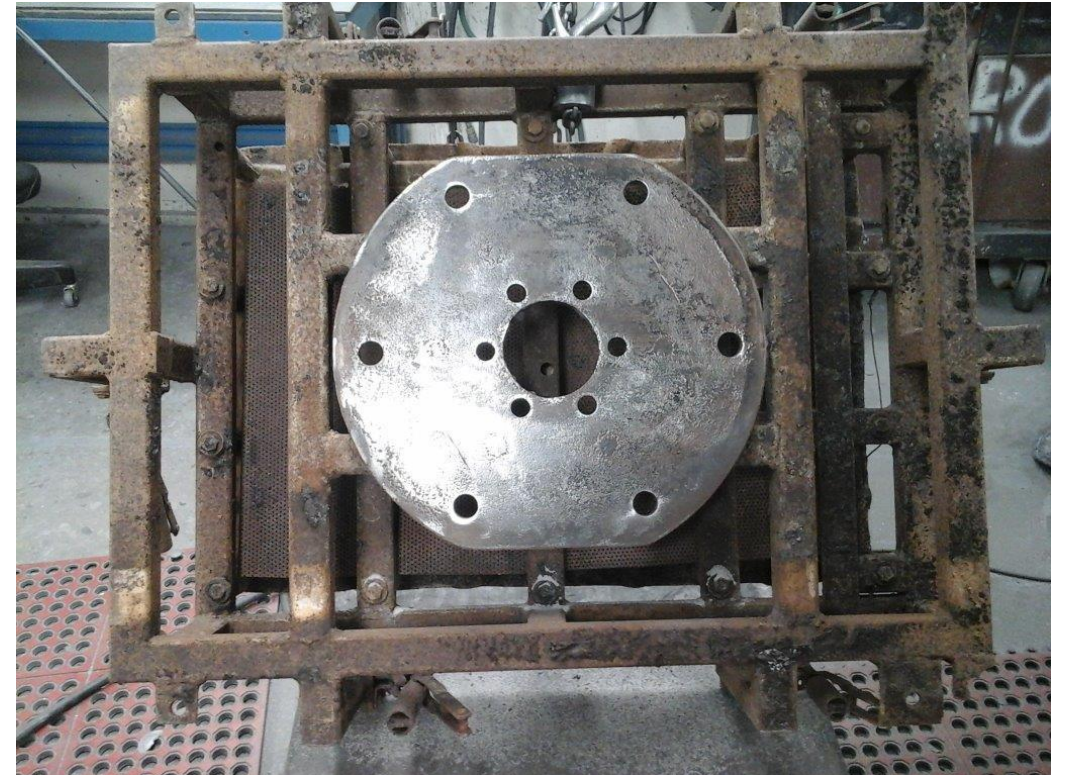
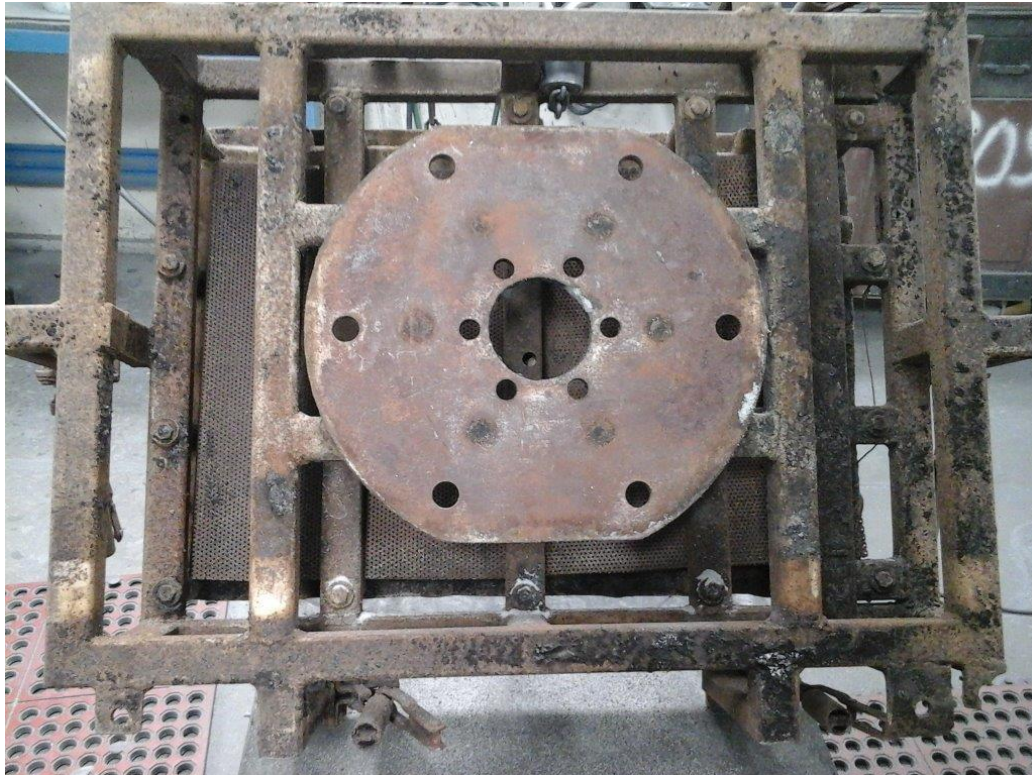
# Static Reduction





# Static Reduction

Keep mounting plates free of rust





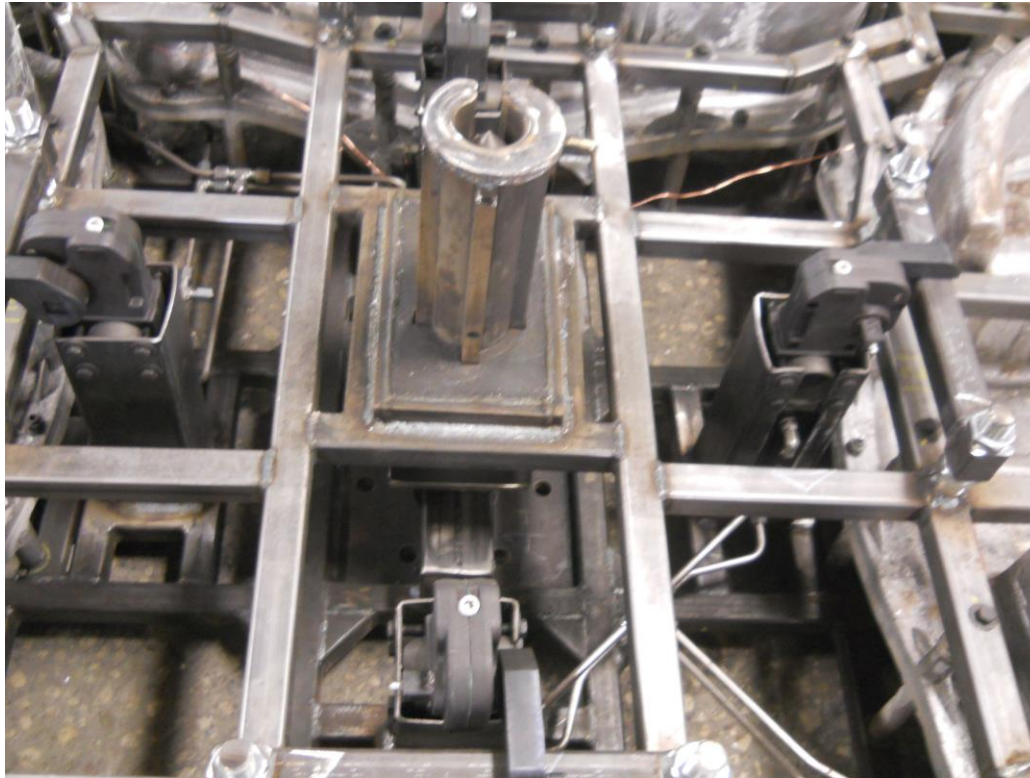
# Back Injuries - Leaning over large molds or spider

- Clamping large molds or spiders



# Back Injuries - Leaning over large molds or spider

- Eliminate the need to lean
- Use air clamps

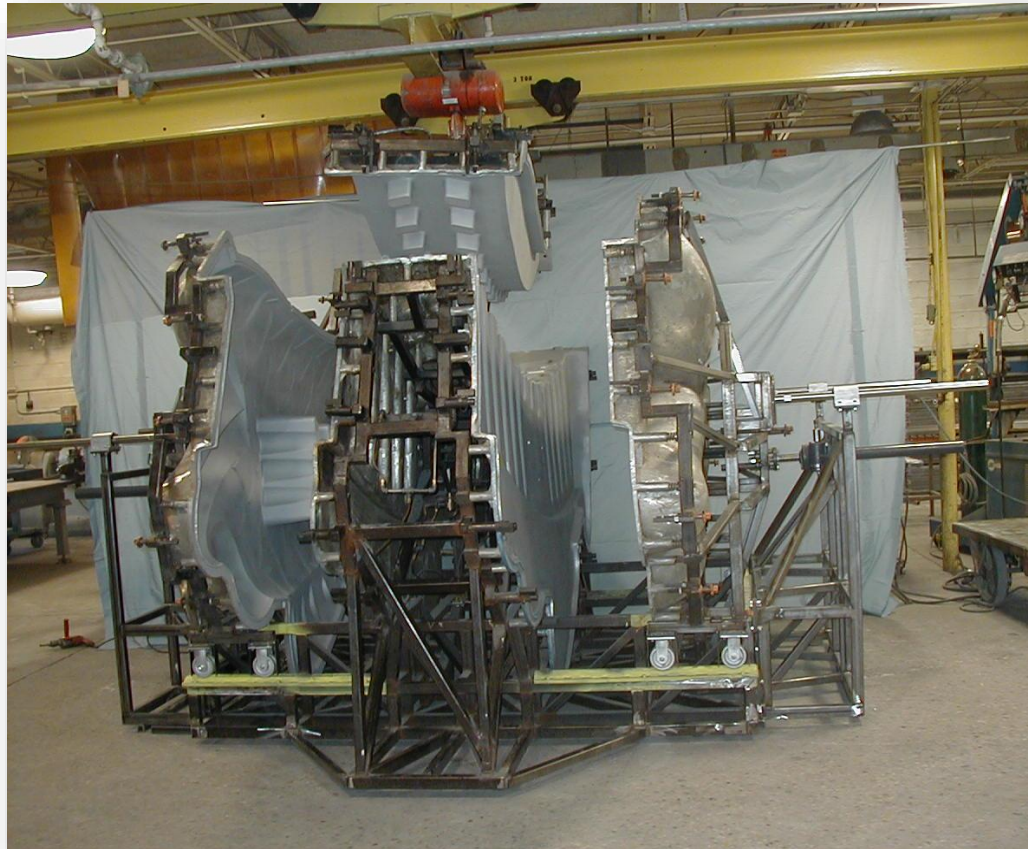




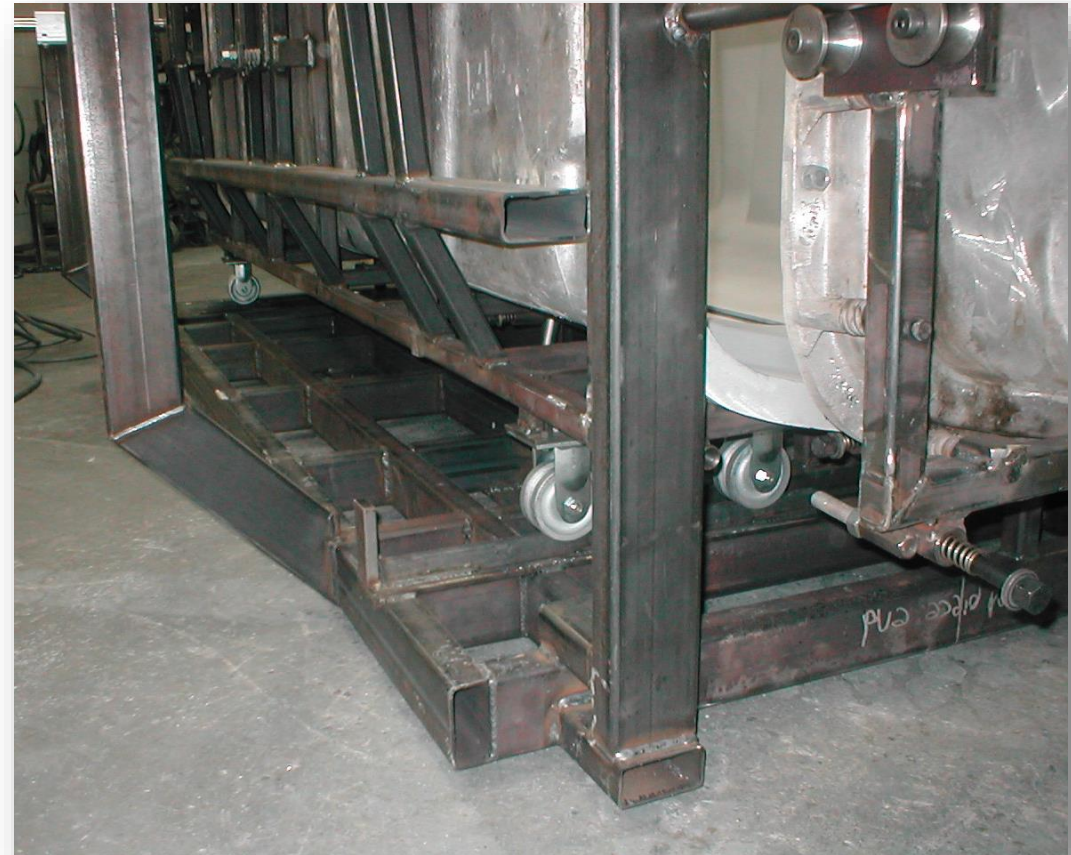
# Back Injuries - Lifting and moving heavy mold pieces



Slides

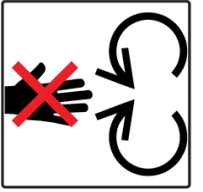


Rollers





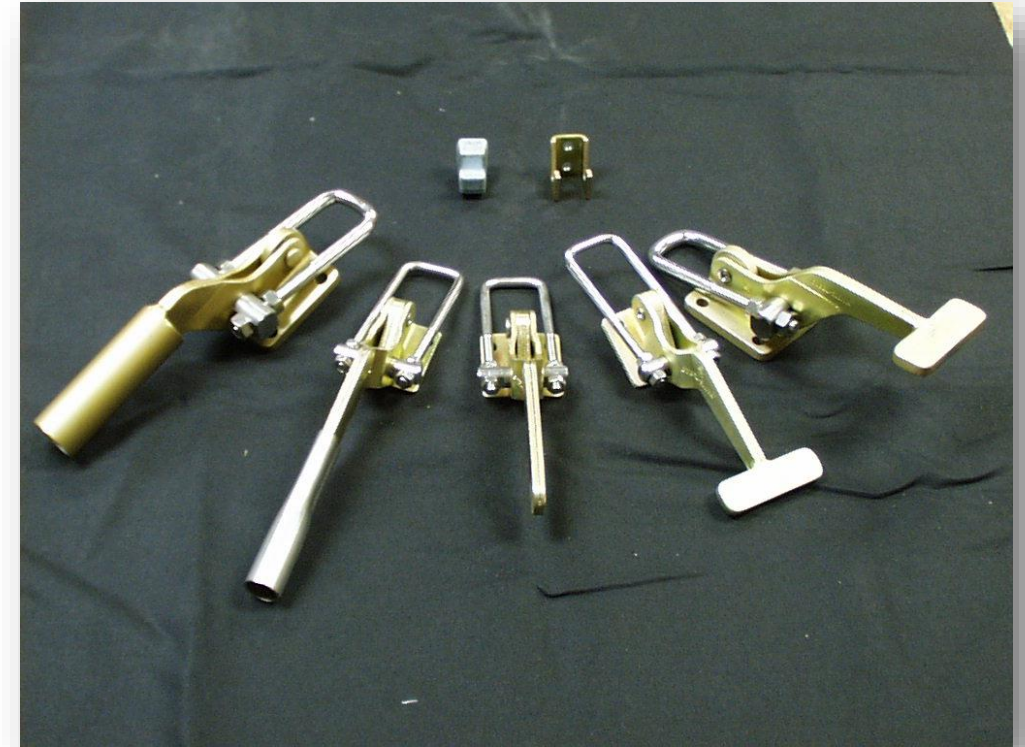
# Hand Injuries – The “Knucklebuster”





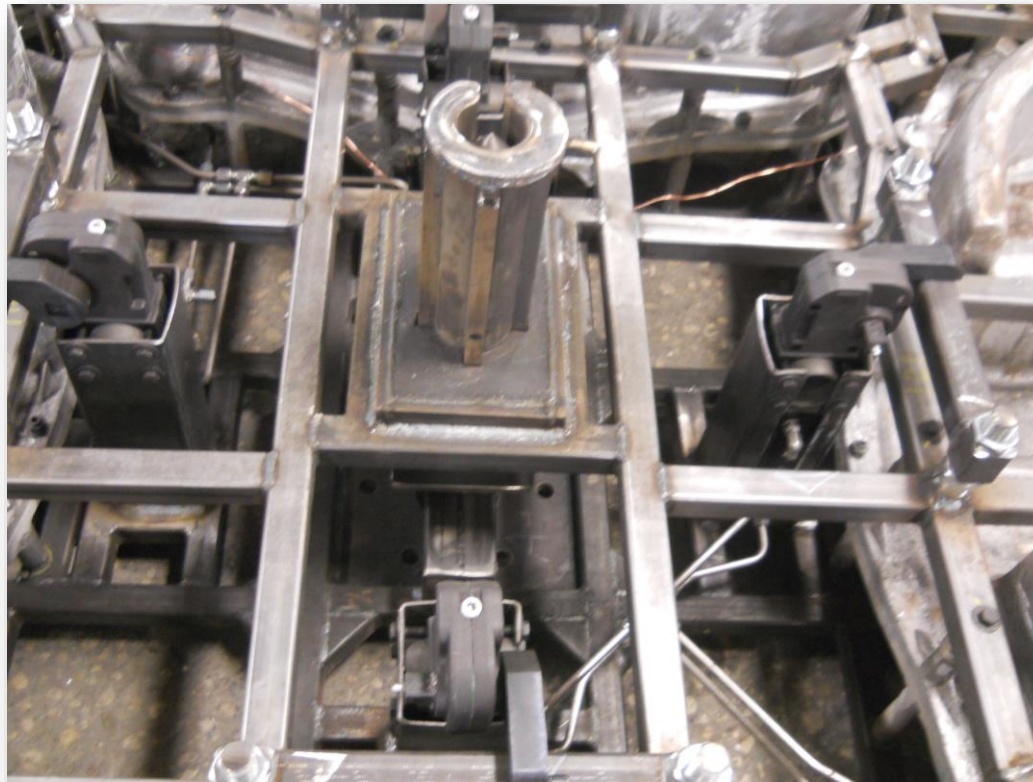
# Hand Injuries - Clamp Operation

- Adjust clamps properly
- Turn clamp handles sideways
- User-friendly clamp designs
- Use bolts and receivers

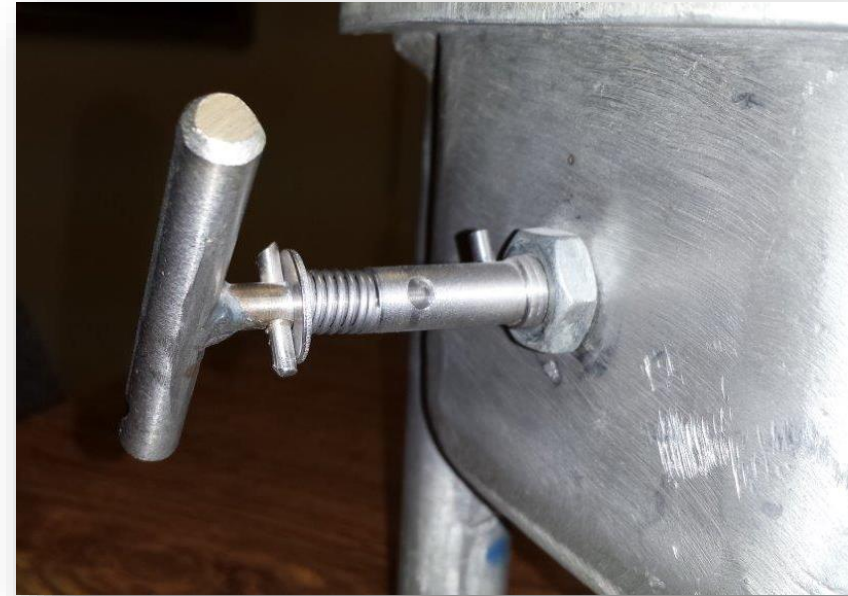
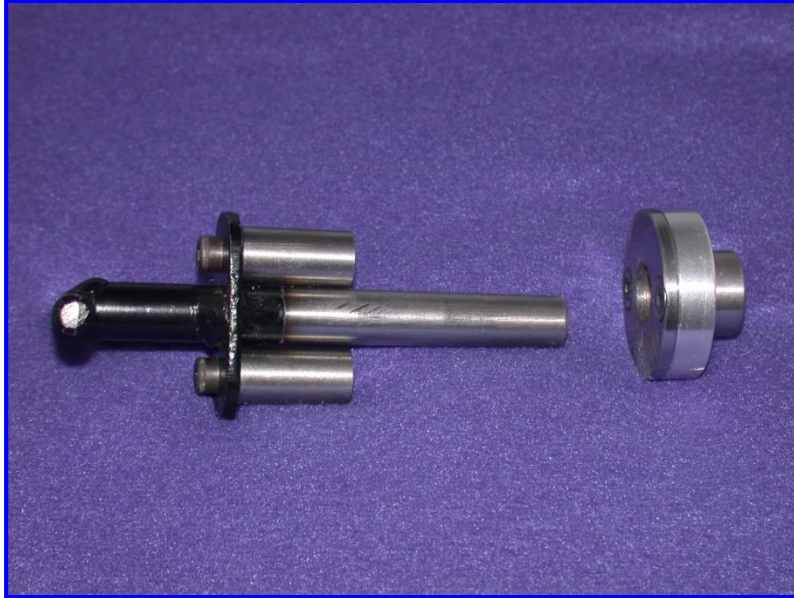




# Hand Injuries – Air Clamp Operation



# Pin and Insert Holders





# Crane Safety

- Handling Hooks
- Handling Chains
- Proper lifting
  - Angles
  - Speed

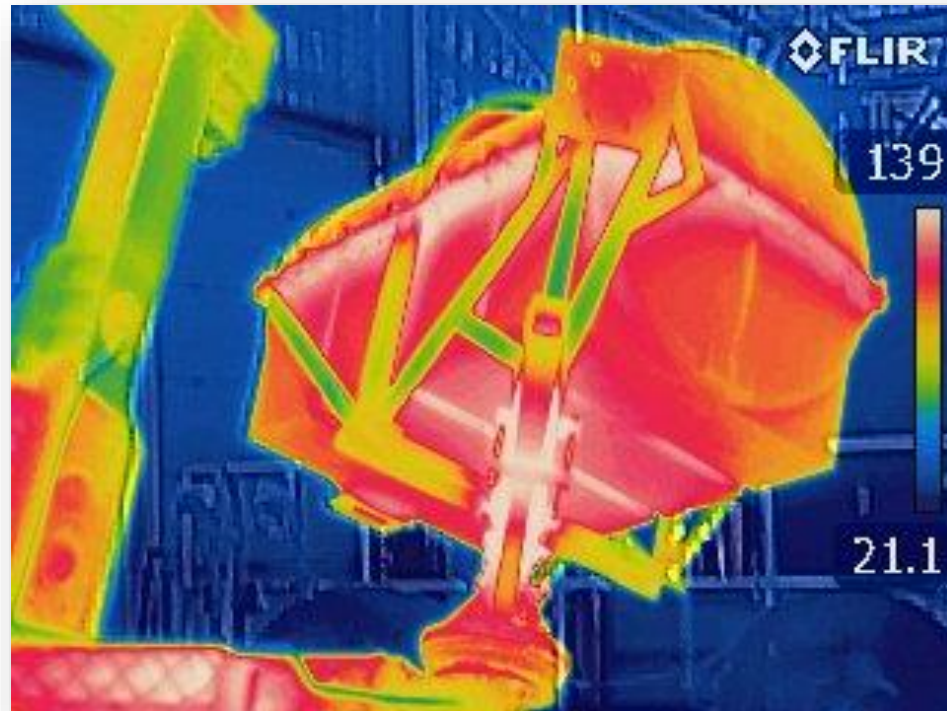




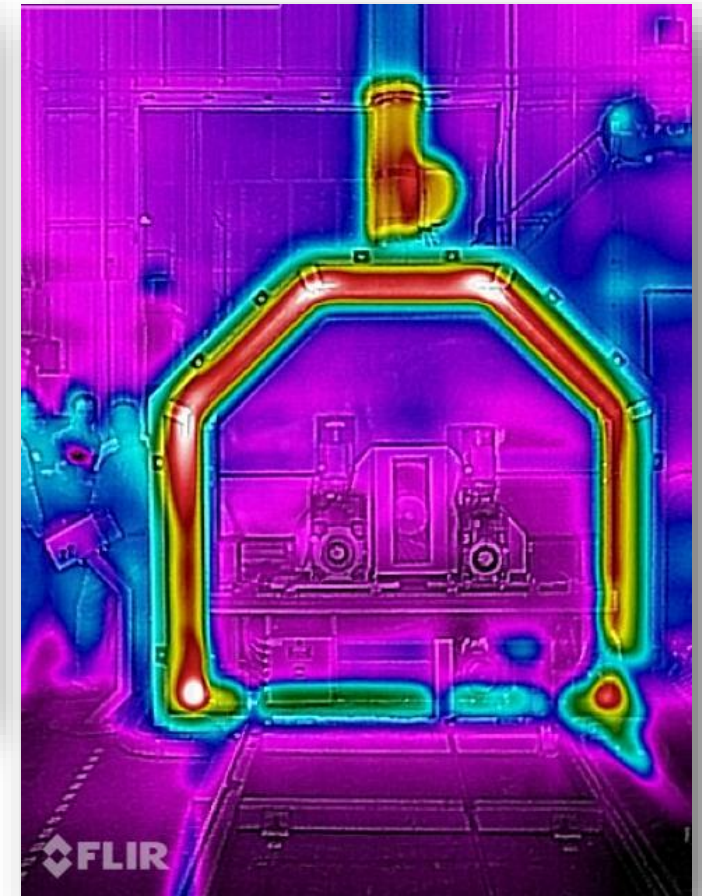


# Burn Protection

- Burn begins at as little as 125° F
- First degree burns @ 140° F for 3 seconds, third degree for 6 seconds
- At 160° burns occur on contact

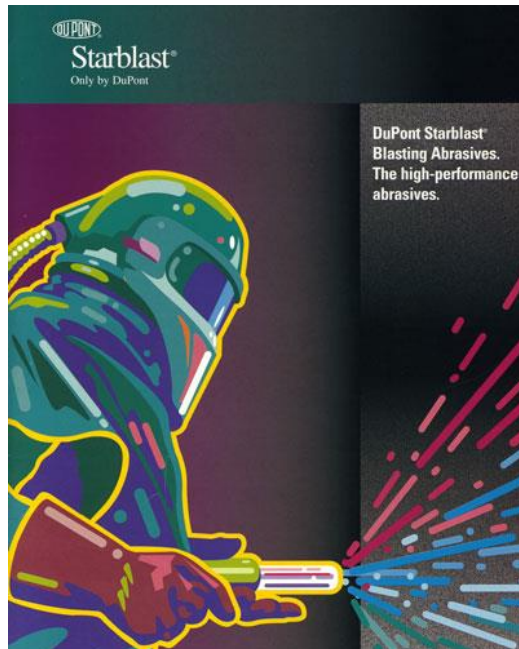


[flir.com/store](http://flir.com/store)



# Burn Protection

- Resin Burns
- Aluminum Melts



# Safety for Molds

- Treat Parting lines with respect
  - No scraping with steel or prying with steel bars
  - Clean off excess resin before closing
- Eliminate Static buildup
- Avoid blocked vents
- Do not overheat
- Do not attempt to burn off excess resin on outside



# Safety for Molds

- Keep clamps adjusted and in proper working order
- Remove rust from mounting plates
- Spray frames with rust inhibitor prior to storing
- Do not store molds with resin in them
- Do not store molds standing sideways on their parting lines

“Be Safe and Prosper”

