



"We deliver what others promise"

NEW AT POWDER KING®

PKA- Patent Pending
Velocity Series
Pulverizer



ARM Annual Meeting & 40th Anniversary
Celebration 2016
Marriott, New Orleans, LA

American Made Components



Generation I-Belt Drive

2003-2005



- Company started in 2003
- First machines with unique style of mill housing design with adjustable air induction directly into mill chamber
- First machines with practical operator platforms for servicing the entire system
- New style disks which provided extended durability
- Clamp style mount rings for securing the disks 360 degrees on OD and ID of the disks for extreme safety
- Disk adjusters to make gap settings accessible



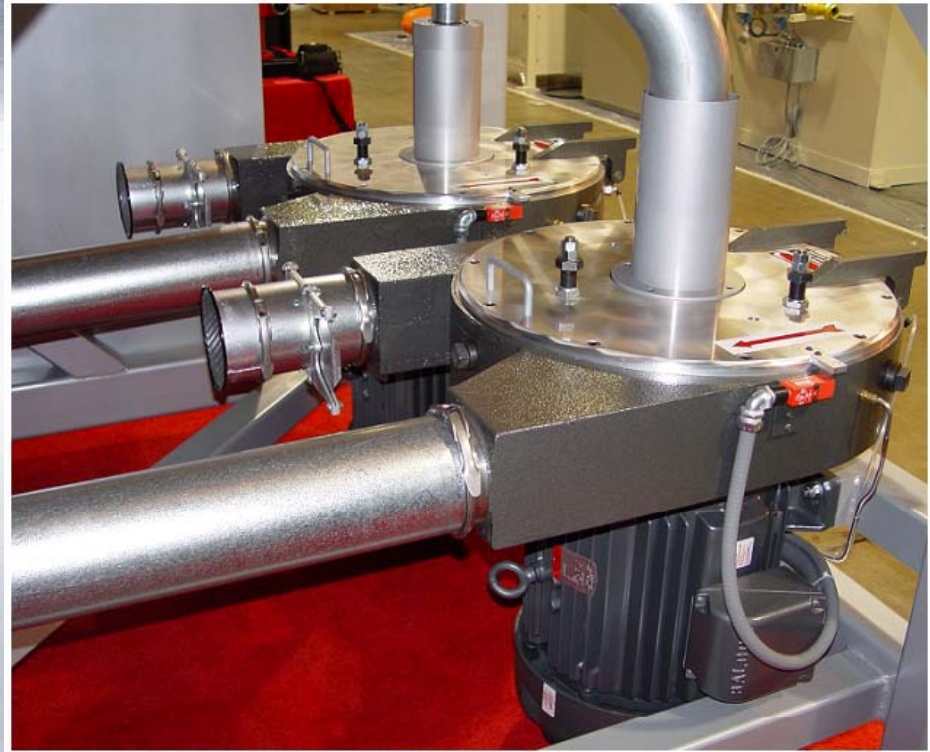
- Single adjustable inlet air
- Single material outlet



Generation II-Direct Drive

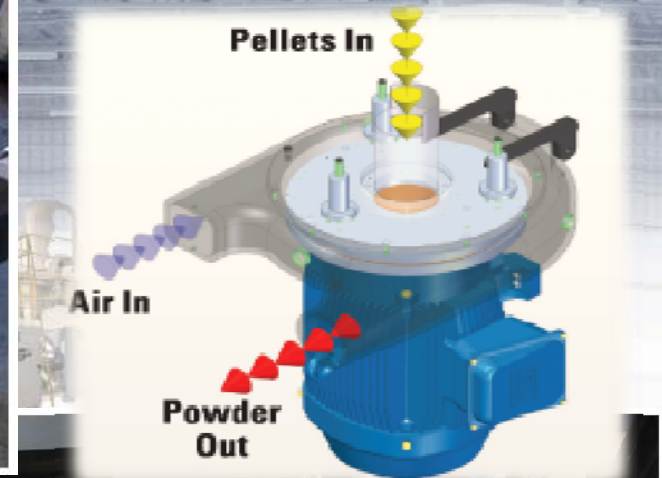
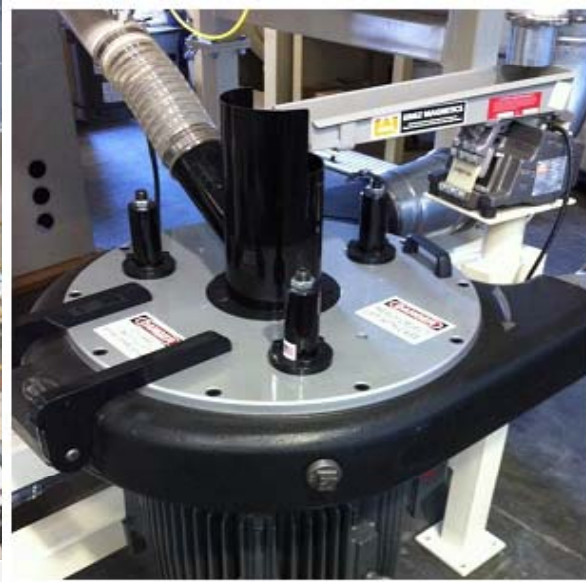
2005-2007

- Direct drive, no more belts and bearing housings
- Single adjustable inlet air
- Single material outlet
- Safer & more durable disk design
- Efficient disk gap adjusting

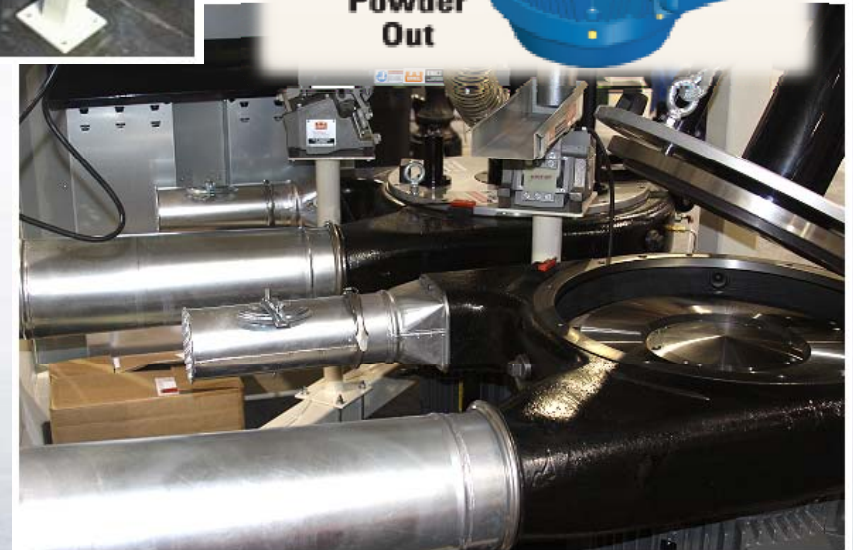




Generation III-Direct Drive, New Mill Housing 2007-Present



- Direct drive system
- New aerodynamic mill housing design
- New disk mounting clamping segments on ID and OD
- New pocket designed flywheel and water jacket for disk mounting
- New single adjustment screw for setting disk gap with single Allen wrench
- Larger air inlet and material out to increase flow of air into the mill and faster evacuation of powder from the mill



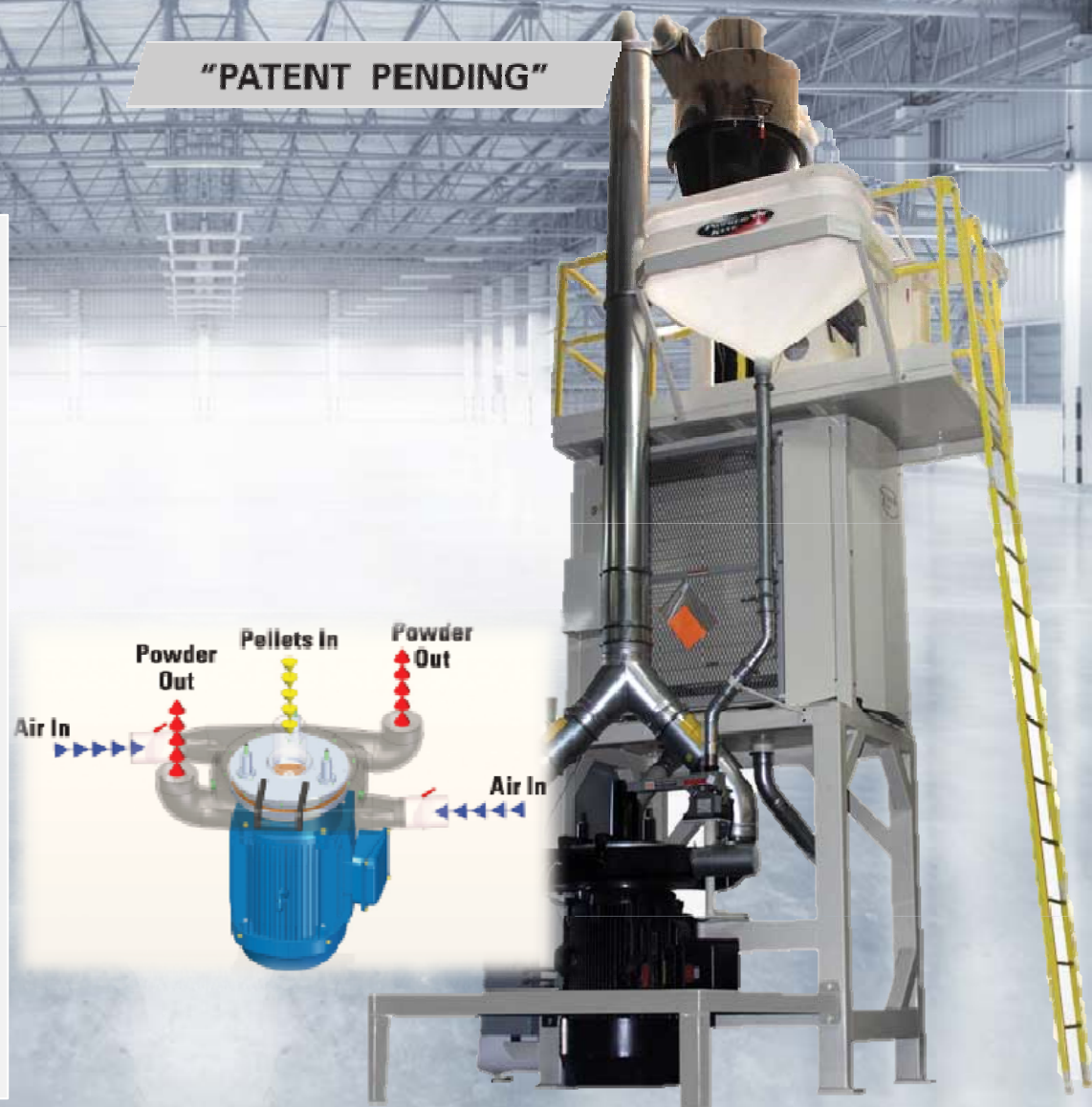


Generation III-The PKA-Velocity

2016

"PATENT PENDING"

- Direct Drive System
- New aerodynamic mill housing design with dual air inlets and dual material outlets
- Disk mounting clamping segments securing disks 360 degrees on ID and OD
- Pocket designed flywheel and water jacket for disk mounting
- Single adjustment screw for setting disk gap with single Allen wrench
- Dual air inlet allows double the cooling air into the mill chamber. These are adjustable to control the volume of air needed for cooling
- Dual material outlets allow the material to evacuate from the mill twice as fast to reduce resident time in the mill to eliminate excess heat build up





“Hi Jim,

Here are the results of our analysis of the powder from your recent successful trials grinding (Tank Resin). This was ground at a rate of 1800 lb./h using your new high-airflow design. The results are impressive, showing excellent powder flow and quality. The material meets or **exceeds** all our internal powder quality specifications. The flow time of 23 seconds is exceptional for a 35-mesh powder.”

–Preferred Customer (Confidential)

SAMPLE...			16-03844
OTHER_SMPL_NAME...			
TEST	PROPERTY	UNITS	
BULK DENSITY	BULK DENSITY	LB/FT3	24.1
DENSITY	DENSITY	G/CM3	0.9434
FLOW TIME	FLOW TIME	SEC	23
MI2	MI2	G/10MIN	1.88
ROTO PARTICLE SZ	US MESH 30	%	0.4
ROTO PARTICLE SZ	US MESH 35	%	0.6
ROTO PARTICLE SZ	US MESH 45	%	35.86
ROTO PARTICLE SZ	US MESH 60	%	28.49
ROTO PARTICLE SZ	US MESH 80	%	15.14
ROTO PARTICLE SZ	US MESH 120	%	11.16
ROTO PARTICLE SZ	US MESH 170	%	4.58
ROTO PARTICLE SZ	US MESH 200	%	1.99
ROTO PARTICLE SZ	US PAN	%	2.79

We pulverized many grades of resins on the Velocity Series™. The results for particle distribution and dry flow of the powders all meet and or exceeded industry standards just as the response above states.

We are very happy with grinding rates the machine produced; some resins were much higher in production rates than others due to differences in MEI and Density of the resin being ground.



Building Expansion

Powder King® is announcing the new expansion of the facility with the purchase of 10,100 sq. ft., making the corporate & manufacturing facility owned by Powder King® a total of 20,100 sq. ft. In addition, two new CNC disk sharpening machines will be added—due by December 2016.





WE DELIVER

WHAT OTHER'S PROMISE!

Equipment that exceeds your expectations
supported by 24-hour / 365 day service.

Thank You,

Happy 40th Anniversary!

Powder King®, LLC.
41780 North Vision Way Bldg. 120, Anthem, AZ 85086
(623) 551-9897
Sales@powder-king.com
Jim Hummel
-Owner