

# **Techno plates – an add-on system for better productivity when rotomolding with large and heavy molds.**

Michel Truax  
STP ROTOMACHINERY Inc.  
[www.stprotomachinery.com](http://www.stprotomachinery.com)

## TRIVIAL QUESTION:

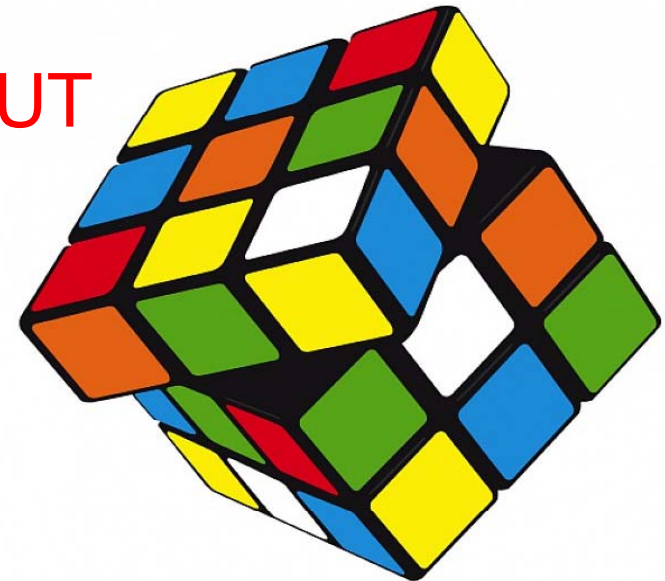
1 – WHAT IS THE BEST TYPE OF ARM TO HANDLE  
LARGE & HEAVY TANK MOLDS?

## (LESS) TRIVIAL QUESTION:

2 – CAN IT HANDLE THE HEAVY LOADS WITHOUT  
BREAKING?

## KEY QUESTION:

3 – CAN PARTS BE REMOVED WITHOUT  
DISMANTLING THE ARM?



BUT THE REAL QUESTION IS:

4 – HOW TO BE MORE PRODUCTIVE?



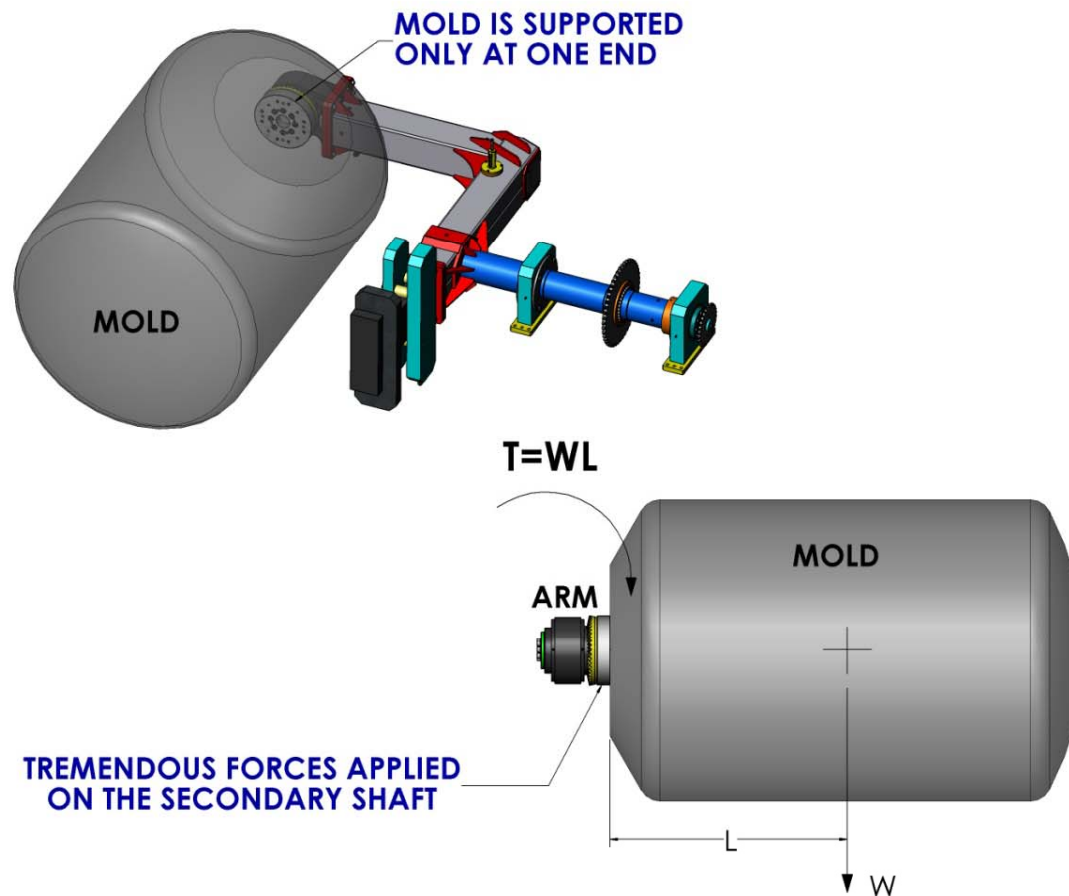
THERE ARE AT LEAST 3 TYPES OF OFFSET ARMS IN THE INDUSTRY:

- “L” SHAPED ARM
- “C” SHAPED ARM
- “BOX” SHAPED ARM (closed arm)

## “L” SHAPED ARM

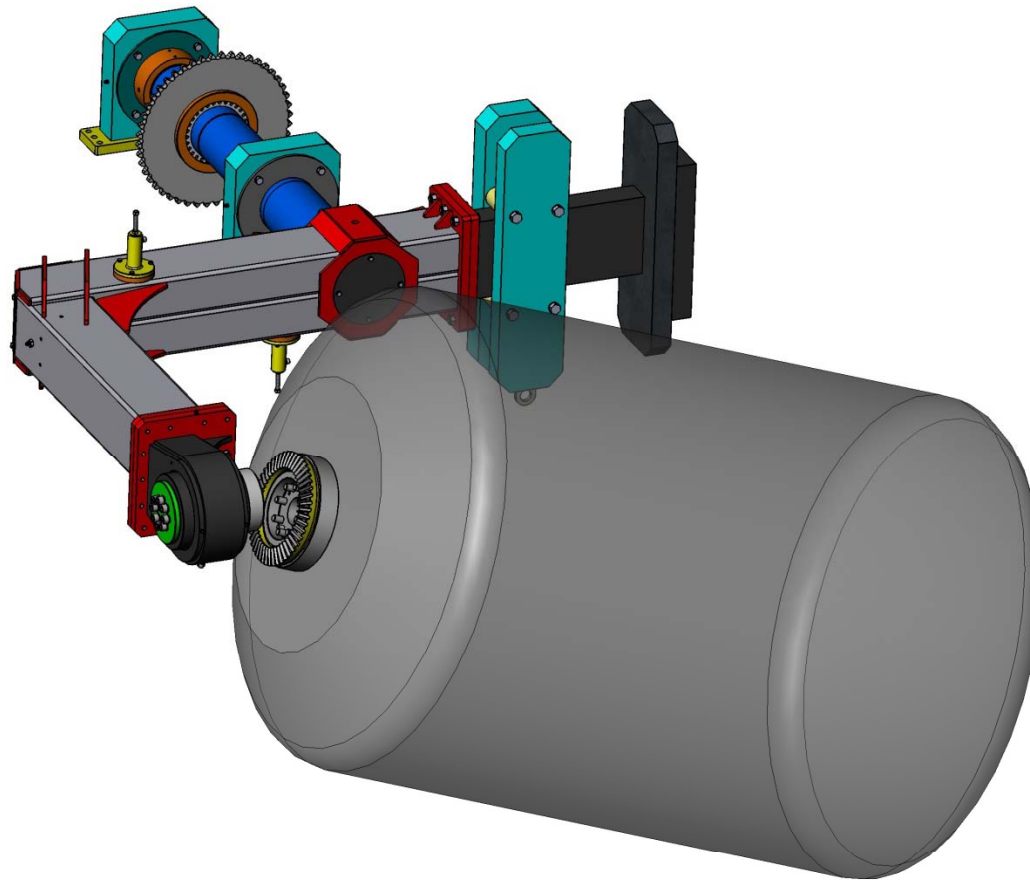
- TOP AREA IS FREE ... BUT IT IS NOT ADAPTED FOR HEAVY LOADS
- BECAUSE MOLDS ARE ONLY SUPPORTED AT ONE END, PLATE IS SUBJECT TO ENORMOUS STRESS, AND ARM CAN BREAK UNDER HEAVY LOADS.

## “L” SHAPED ARM





# **“L” SHAPED ARM** CAN BREAK UNDER ENORMOUS STRESS

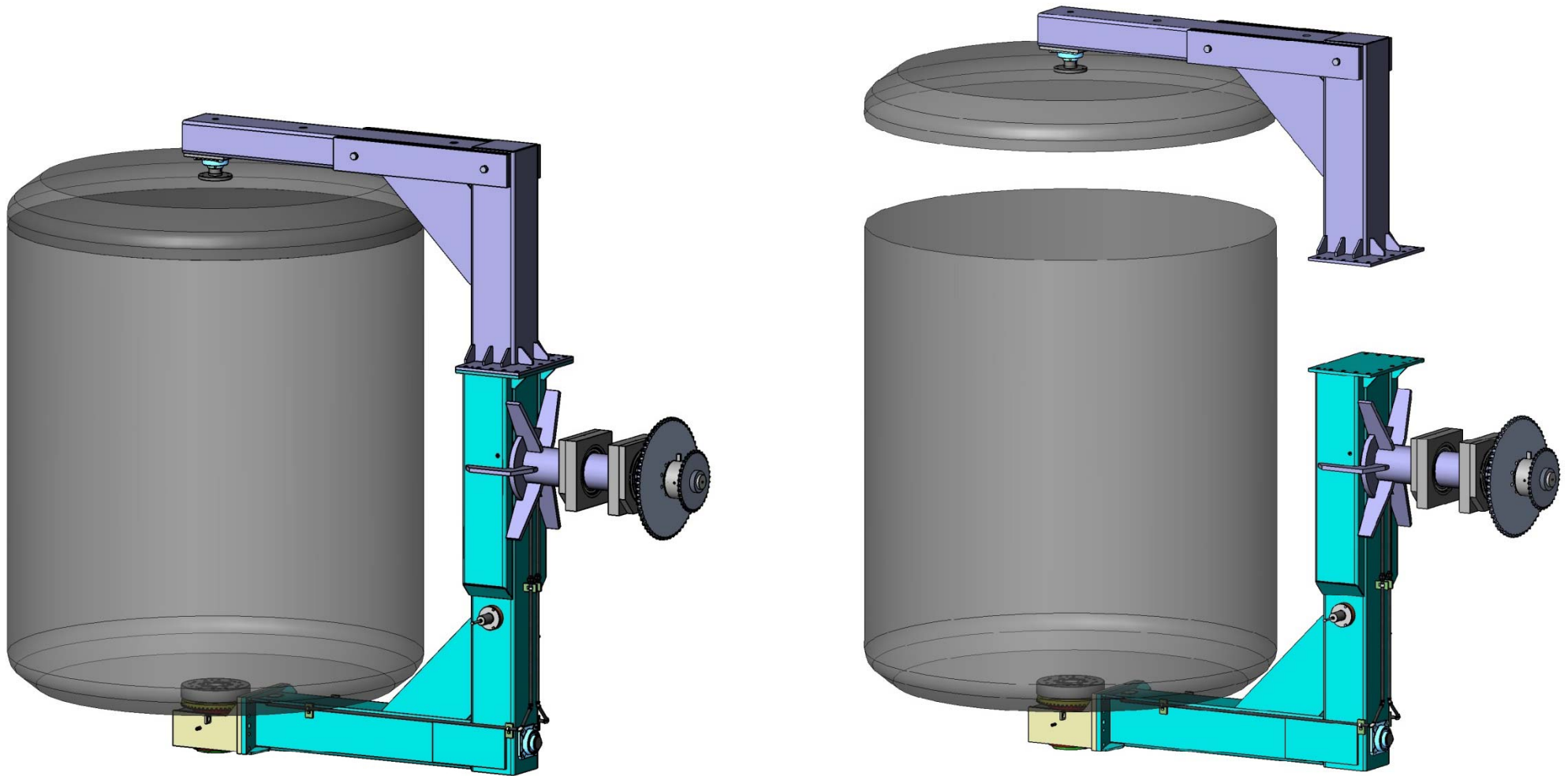


## “C” SHAPED ARM & “BOX” SHAPED ARM

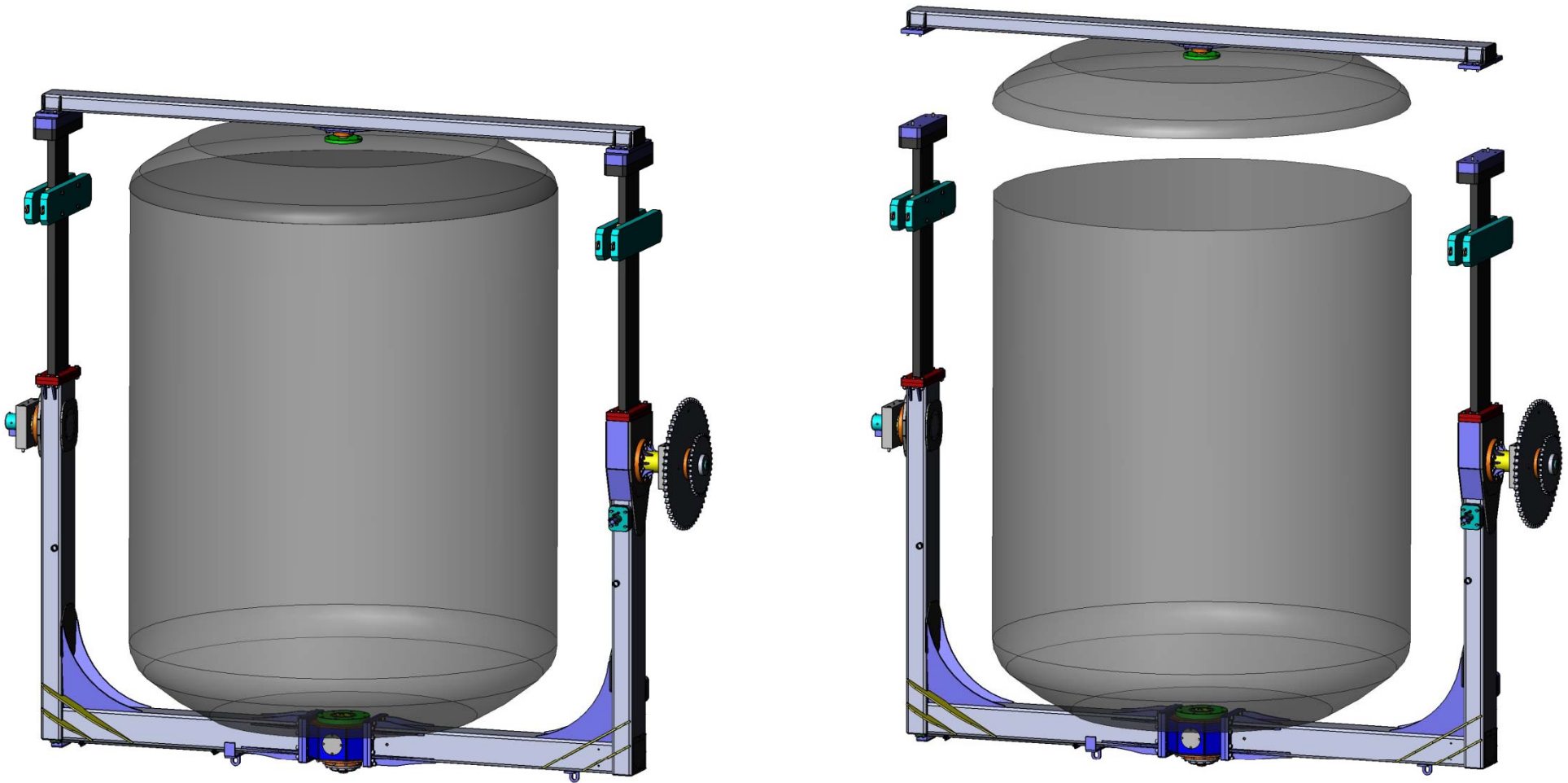
CAN HANDLE HEAVIER LOADS... BUT REMOVING THE PART FROM THE MOLD WILL BE COMPLICATED, ESPECIALLY IF USING AN OVERHEAD CRANE.



## “C” SHAPED ARM



## “BOX” SHAPED ARM (CLOSED ARM)



**STILL WONDERING  
HOW WE CAN GET  
AROUND THESE  
CHALLENGES?**



***OUR CUSTOMERS EXPECT  
US TO HAVE THE  
SOLUTIONS.***

## THE TECHNO-PLATE SYSTEM



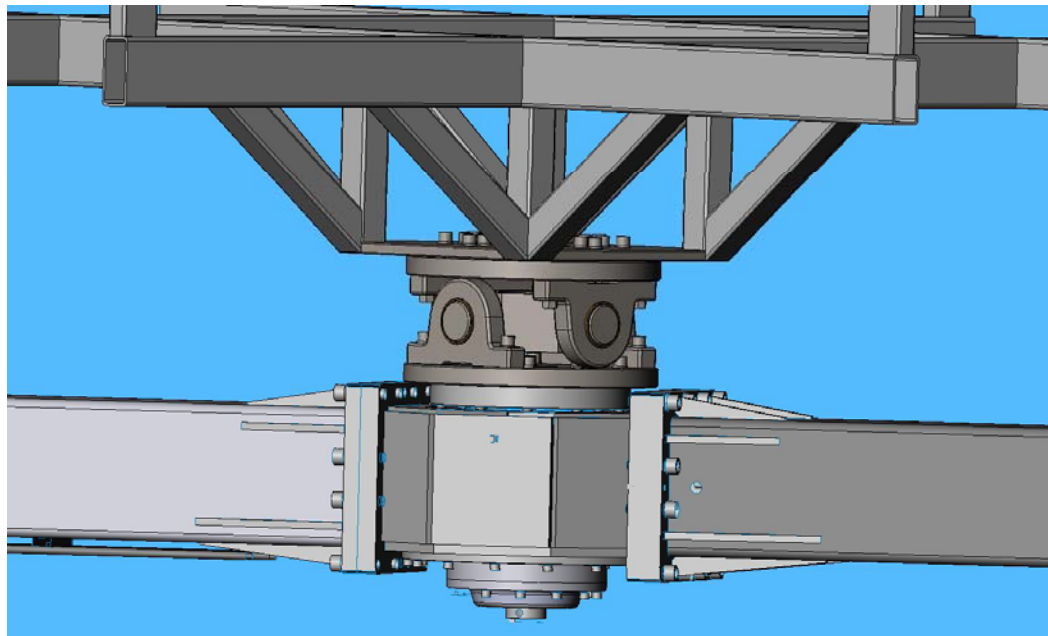


## THE TECHNO-PLATE SYSTEM

**SYSTEM DESIGNED FOR ARMS THAT ARE SUPPORTED AT BOTH ENDS.**

**IT HAS 2 MAIN SECTIONS:**

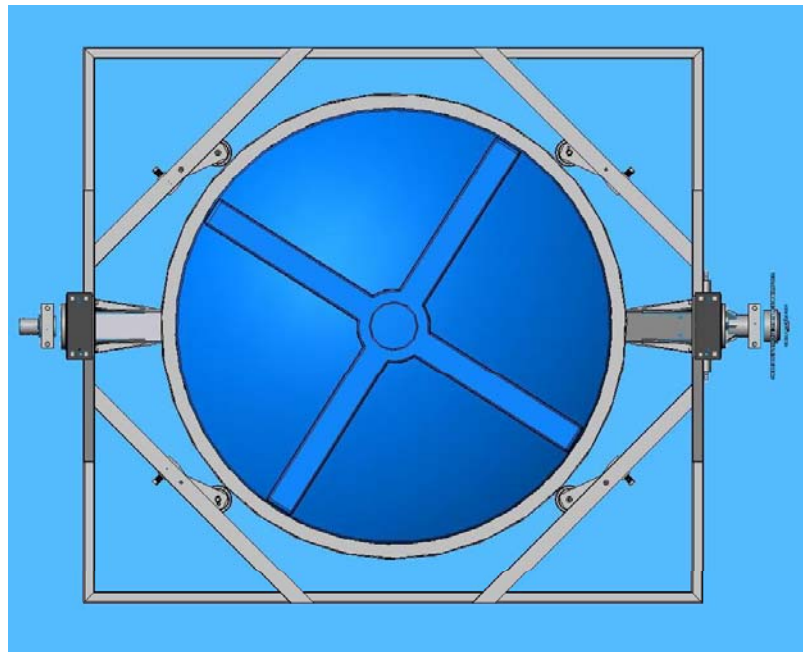
- 1) REGULAR PLATE (MINOR AXIS) IS REPLACED BY A PLATE ON A UNIVERSAL SWIVEL JOINT: ALLOWS SIDEWAY MOVEMENTS!**





## THE TECHNO-PLATE SYSTEM

- 2) **NO CANTILEVER LOAD: SQUARE FRAME SUPPORTS MOLD WITH SPRING-LOADED STEEL WHEELS. SIDEWAY MOVEMENTS ARE WELL SUPPORTED.**







## **CONCLUSION**

### **KEY BENEFITS FOR ROTOMOLDERS:**

- 1. SAFER WORK ENVIRONMENT;**
- 2. TOP OF MOLD IS ALWAYS FREE: EASY ACCESS FOR REMOVAL OF MOLD COVER AND LOADING RESIN;**
- 3. HEAVY LOADS WILL NOT DAMAGE ARM, ESPECIALLY THE PLATE OR THE SHAFT THAT DRIVES THE PLATE;**
- 4. IMPROVED EFFICIENCY - MOLDER WILL BE ABLE TO USE OVERHEAD CRANE TO REMOVE TANK.**



# THANK YOU!

[www.stprotomachinery.com](http://www.stprotomachinery.com)