



# What's New

**Annual Fall 2013**

**Association of Rotational Molders**



## Products and Services



➤ Powder King Single & Dual Mill Pulverizers



## Products and Services



Regrind



Pellets



Powder

➤ RBW Technologies Reprocessed  
Polyethylene



## Products and Services



- PSI Brand INMOULD and POSTMOULD  
Permanent Graphics



## Products and Services

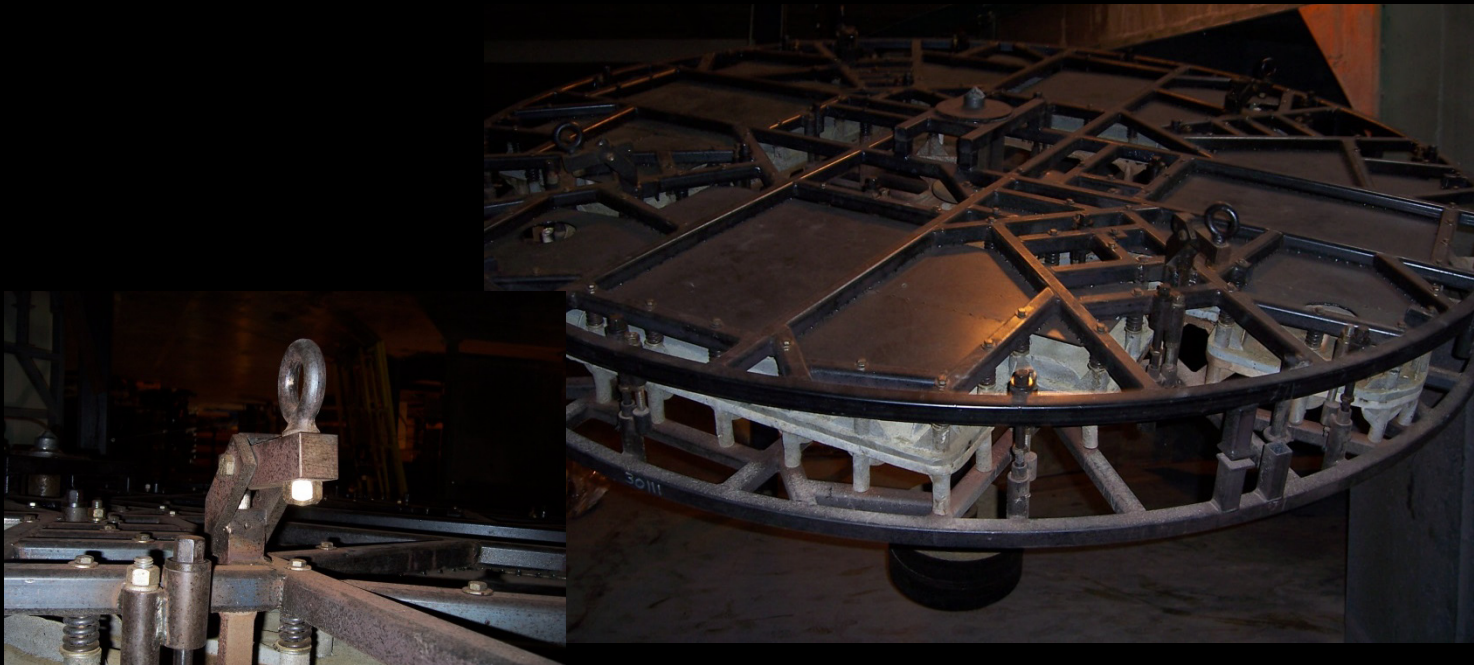


➤ KECO Engineered Teflon Coating





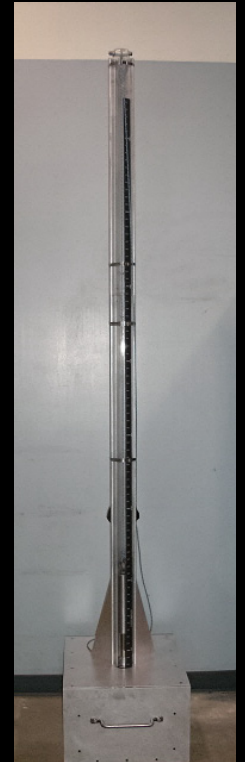
## Products and Services



➤ AutoMatic Mold Jacks



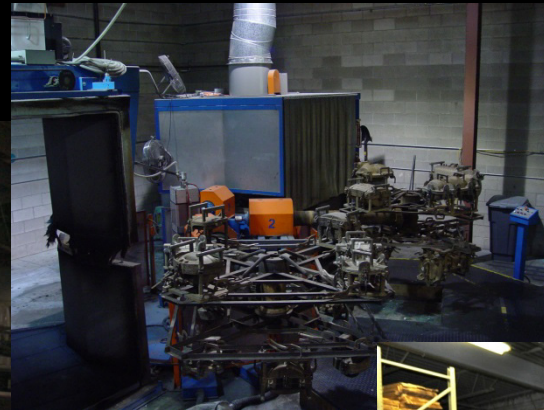
## Products and Services



➤ Test Equipment



## Products and Services



➤ Used Machines





## What's New?

**New Product Line From OptiMax**

➤ **High-Intensity Mixers**

**New Product From PSI Brand**

➤ **ENHANCE – A Water-Based Surface  
Enhancer**



# OptiMax High-Intensity Mixers



## Advantages:

- Fast Mixing Cycles
- Consistent Color and Opacity
- Polishes Pigments for Vibrant Color

**OPTI MAX**

# OptiMax High-Intensity Mixers

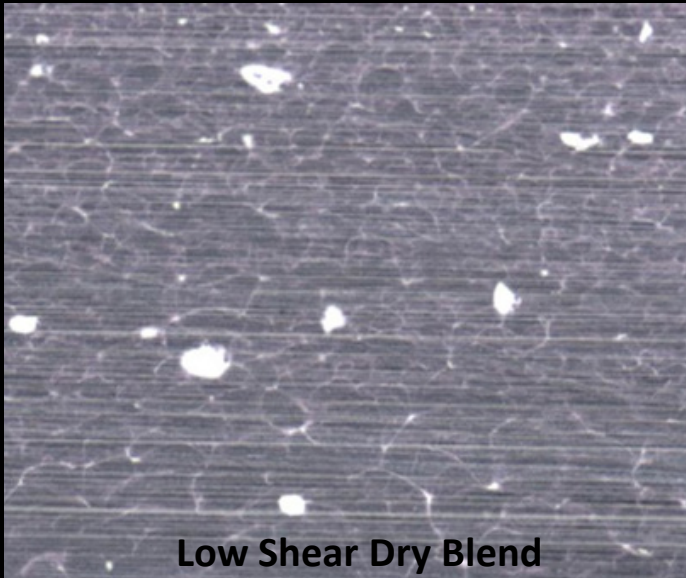


## Advantages:

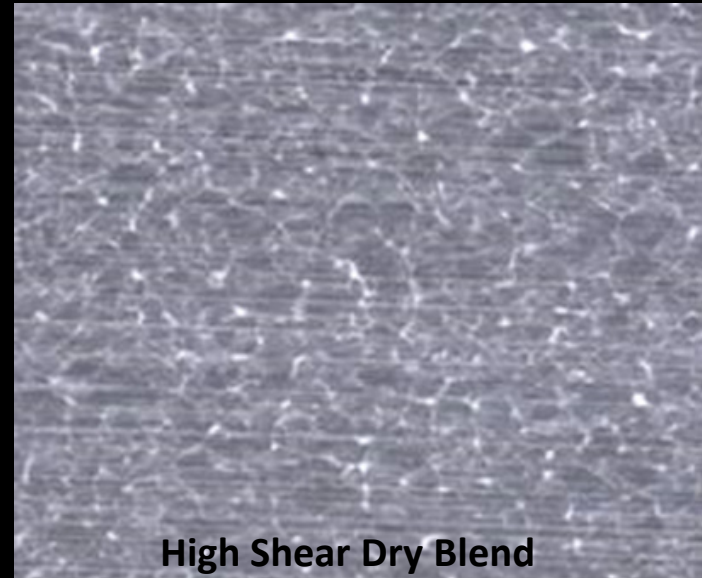
- Polishes powder resulting in less tails and higher bulk density
- Improves Mechanical Properties of the Molded Parts



# OptiMax High-Intensity Mixers



Low Shear Dry Blend



High Shear Dry Blend



# OptiMax

## High-Intensity Mixers



### Why OptiMax?

- Affordable
- Capable of mixing by time or temperature
- Three Sizes – 40kg, 60kg, 140kg
- Optional Platform
- Optional Powder Handling & Weighing Systems





# PSI BRAND PEEL & STICK GRAPHICS



Rugged



Opaque



Simple

# PSI Brand Graphics



1



2



3



4



5

Typical INMOULD Graphic



PSI Brand ENHANCE

**ENHANCE**  
**WATER BASED**  
SURFACE ENHANCER



# PSI Brand ENHANCE

- ENHANCE is formulated to remove surface pitting on polyolefin products and fill voids in tight radii, threads and other difficult-to-mold areas





# PSI Brand ENHANCE



Water-Based  
Safe, non-flammable and dilutes with water



Odorless  
Environmentally friendly



More Effective  
Up to 50% more active product per can



Economical  
Bulk supply offers up to 40% in cost savings





# EASY-PEEL ADHESIVE (EPA)



After molding, peel the adhesive

# PALADINSALES

