

# TRANSCONTINENTAL PERSPECTIVES

## ARLIS/NA IN THE CANADIAN ROCKIES



34<sup>th</sup> Annual Conference  
Art Libraries Society of North America  
May 5-9, 2006  
Banff, Alberta, Canada  
[www.arliscanada.ca/banff2006](http://www.arliscanada.ca/banff2006)

## Conference Program

# REPLACE MILES OF STACKS WITH ARTFACT.COM

- **Over 10 million complete auction records and millions of digital photos.** Artfact.com offers the world's most comprehensive online auction database for fine art, decorative arts, jewelry, wine, collectibles — virtually everything sold by traditional auction houses. All of the original catalog information from over 35,000 auctions at more than 500 auction houses including Sotheby's, Christie's, Bonhams, and Phillips.
- **A single source for all your auction research needs.** Join Cooper-Hewitt, Winterthur, The Frick, The Met, Boston Public Library, High Museum, Colonial Williamsburg, LACMA, New York Public Library, Art Institute of Chicago, and dozens of others. Now you can offer unlimited public access to virtually an entire wing of fine art and antiques auction catalogs at the click of a mouse.
- **Library and museum subscriptions include a non-profit \$500 discount,** unlimited 24/7 access to the entire database, and IP recognition technology allowing access from multiple computer terminals.

**Visit our booth, or contact  
Lynel Leonard at 617-219-1020 or  
lleonard@artfact.com**

**Visit us online at *www.Artfact.com***

# TABLE OF CONTENTS

1	Welcome from the President
2	Welcome from the Conference Co-chairs
3	Conference Planning Advisory Committee
5	ARLIS/NA Executive Board and Representatives
6	Sponsors/Donors
7	Exhibitors
8	General Information
11	Special Events
14	Meeting Finder
18	Conference Events At-a-Glance
20	Program Schedule
40	Banff Springs Hotel Plan
43	Days-in-View

## WELCOME FROM THE PRESIDENT

On behalf of our hosts, the ARLIS/NA Northwest Chapter, the 2006 Conference Planning Advisory Committee, and the ARLIS/NA Executive Board, I take great pride in welcoming you to the 34th Annual Conference of the Art Libraries Society of North America.

The Banff Conference, with the theme “Transcontinental Perspectives: ARLIS/NA in the Canadian Rockies,” provides a full program of sessions, workshops, meetings, tours, and special events designed to inform, challenge, please, and restore the minds of each of us. I believe that you’ll agree that this year’s dedicated Conference Co-Chairs—Marilyn Nasserden, Jill Patrick, James Rout, Christine Sammon, and Kathy Zimon—along with many, many volunteers from the Northwest Chapter, from ARLIS Canada, and from the Province of Alberta have created a stellar program. Their hard work and creativity on our behalf are much appreciated.

Our Society owes a debt of gratitude to our Conference donors and sponsors. We are particularly grateful to Alberta’s post-secondary educational institutions that have supported our Convocation, and to our exhibitors. Their generosity and presence supports not only our conference here in Banff but also provides us with lasting benefits throughout the year. In planning your activities during the next few days, please visit our exhibits hall so that you can meet, negotiate with, and personally thank our exhibitors for their part in making this event possible.

The Welcome/Exhibit Hall Opening Reception, the Convocation Reception, the Silent Auction, the Student Pub Social (which is not limited to students), Film Night, the Comic Craze Exhibition and Reception at the Banff Centre, and an evening of wine tasting will provide wonderful opportunities for meeting new colleagues and networking with familiar friends. The Fairmont Banff Springs Hotel provides an ideal setting appropriate for serious work along with opportunities for well deserved relaxation in the Willow Stream Spa or in one of the many gathering spaces scattered throughout. Maybe you will even find time to read *Murder as a Fine Art* on one of the terraces of the hotel.

You will notice some differences in the program this year. We are offering, for the first time, a pre-conference workshop focusing exclusively on the application of Canadian copyright law to digital images, photographs and works of art. In addition to the expected sessions and workshops, the Program Committee has also incorporated a number of “free” workshops into the program, including the ARLIS/NA Mentoring Initiative: a Workshop for Mentors and Mentees; Collection Development, Acquisitions, and Vendor Relations; and Postcards from the Edge: Reference and Instruction for Film Studies. They will provide you with practical information that you will be able to apply directly to your work. Finally, this year we present *New Voices in the Profession: Student Papers on Art and Visual Resources Librarianship*. This session will feature award winning papers from some of our newest colleagues.

So, prepare yourself for several days of having “too many choices” to make in “too little time,” but don’t forget to enjoy the wonderful setting of the hotel, to explore the spectacular surroundings, and to relax in the spa.

Welcome!

Margaret N. Webster  
ARLIS/NA President

# WELCOME FROM THE CONFERENCE CO-CHAIRS

After two years of intense planning, the Conference Co-chairs are pleased to present Transcontinental Perspectives, the 34th Annual Conference of ARLIS/NA. Implicit in this year's theme are the value of diverse viewpoints and the importance of information sharing across both geographic and disciplinary boundaries. Mindful also of the Society's mandate to promote networking and professional development opportunities for conference attendees, we present a stimulating and practical program that takes its cues from two documents, *ARLIS/NA Core Competencies for Art Information Professionals* and the *ARLIS/NA Strategic Plan, 2005-2009*.

Evident in the programming are the pervasiveness of digitization projects, the interconnectedness of art libraries with the visual resources community as well as with other arts disciplines, such as film and classical studies. Also evident is the imperative to expand our knowledge and skills to respond effectively to the rapid pace of technological change in our institutions. We live and work in an exciting era when our traditional professional theory and practice can bring purpose and order to the new information environment. The need for information sharing and collaboration is reflected in both the depth and breadth of the new programming you will see in this year's conference. To the many ARLIS/NA members who submitted proposals and agreed to contribute their time and expertise to bring their proposals to fruition, we extend a most sincere thank you! The conference is a truly collaborative effort of which we can all be proud.

For the first time in its history, ARLIS/NA meets in a small, intimate, natural setting instead of a large urban center. We invite you to enjoy the inspiring sessions and workshops we have arranged; to network with friends and colleagues; to commune with nature during our early-morning nature walks; to relax and unwind by sampling Canadian wines and films, or go out on the town with friends; and generally to take full advantage of the unique opportunities such a venue offers. Whatever you choose to do, you will surely appreciate the natural beauty of Banff National Park, a UNESCO World Heritage site, and the grandeur of our conference hotel. The Fairmont Banff Springs Hotel was designated a National Historic Site in 1988 as "a famous railway resort hotel in the Chateau style."<sup>1</sup> Originally built to welcome international travelers to the Rocky Mountains, it remains today the perfect natural location for a transcontinental meeting of minds.

Welcome to Banff!

Marilyn Nasserden and Jill Patrick, Program Co-Chairs;

James Rout, Christine Sammon, and Kathy Zimon, Local Arrangements Co-Chairs

1. Historic Sites and Monuments Board of Canada: [http://www.pc.gc.ca/clmhc-hsmbc/index\\_E.asp](http://www.pc.gc.ca/clmhc-hsmbc/index_E.asp), April 3, 2006.

# CONFERENCE PLANNING ADVISORY COMMITTEE

## ***President***

Margaret Webster  
mnw3@cornell.edu

## ***Vice President/President-Elect***

Ann Whiteside  
awhiteside@mit.edu

## ***Past President***

Jeanne Brown  
jeanneb@unlv.nevada.edu

## ***Development***

Allen Townsend  
allen.townsend@cartermuseum.org

Kim Collins  
kcolli2@emory.edu

## ***Treasurer***

Lynda White  
lsw6y@virginia.edu

## ***Conference Co-chairs Local Arrangements***

James Rout (and Webmaster)  
james\_rout@banffcentre.ca

Christine Sammon (and Exhibits)  
Christine.Sammon@acad.ca

Kathy Zimon (and Publicity)  
zimon@ucalgary.ca

## ***Conference Co-chairs Program***

Marilyn Nasserden  
Marilyn.Nasserden@ucalgary.ca

Jill Patrick  
jpatrick@ocad.on.ca

## ***Tours Coordinators***

Heather D'Amour  
damour@ucalgary.ca

Jennifer Lee

Jennifer.Lee@ucalgary.ca

## ***Local Development Coordinator***

Glenna Westwood  
Glenna.Westwood@uleth.ca

## ***Conference Mentor Coordinator***

Alba Fernandez-Keys  
AFernandez@ima-art.org

## ***Registration/Hospitality Coordinator***

Sheila Wallace  
swallace@eciad.ca

## ***Fundraising Events***

Melinda Reinhart  
mel@alcor.concordia.ca

Allison Sivak  
ASivak@mail.library.ualberta.ca

## ***Special Events Coordinator***

Maureen Hunter  
mhunter@ucalgary.ca

## ***Members at large***

Michelle Sinotte  
msinotte@ucalgary.ca

Thea de Vos  
tdevos@epl.ca

## ***Executive Director***

Elizabeth Clarke  
eclarke@igs.net

## ***Online Conference Proceedings Coordinator***

Cheryl Siegel  
casiegel@vanartgallery.bc.ca

## ***Conference Publications Copy Editor/ Proofreader***

Eileen Markson  
artmarks@tplaza.org

## ***Conference Manager/Publications***

Susan Rawlyk  
srawlyk@shaw.ca

# ARLIS/NA EXECUTIVE BOARD AND REPRESENTATIVES FOR 2005/2006

## *President*

Margaret Webster

## *Past President*

Jeanne Brown

jbrown@ccmail.nevada.edu

## *Vice President/President Elect*

Ann Baird Whiteside

awhites@mit.edu

## *Treasurer*

Lynda White

lsw6y@virginia.edu

## *Secretary*

Eumie Imm-Stroukoff

eumie@okeeffemuseum.org

## *Executive Director*

Elizabeth Clarke

eclarke@igs.net

## *Midwest Regional Representative*

Leigh Gates

lgates@artic.edu

## *Canadian Representative*

Jonathan Franklin

jfrankli@gallery.ca

## *Northeast Regional Representative*

Carol Ann Fabian

cafabian@buffalo.edu

## *South Regional Representative*

Heather Ball

h.ball@vt.edu

## *West Regional Representative*

Peggy Keeran

pkeeran@du.edu

## *Association Administrator*

Craig Fleming

craig@mcphersonclarke.com

## SPONSORS/DONORS

The following organizations and individuals have committed their support to the ARLIS/NA 34<sup>th</sup> Annual Conference. We wish to acknowledge their support and thank them for their generosity. More information is available about our sponsors at the ARLIS/NA web site: [www.arlisna.org](http://www.arlisna.org)

### **Society Affiliate Gold Sponsors**

Canadian Heritage Information Network (CHIN)  
SASKIA Ltd., Cultural Documentation

### **Society Affiliate Silver Sponsors**

F.A. Bennett Inc.  
University of Alberta  
University of Calgary  
UserFul

### **Society Affiliate Bronze Sponsors**

Cambridge Scientific Abstracts  
H.W. Wilson Foundation  
Worldwide Books

### **Other Sponsors and Donors**

Alberta College of Art and Design	Erasmus Boekhandel BV
Andrew Cahan: Bookseller, Ltd.	Fairmont Stores
Apache Superior Printing Ltd.	Howard Karno Books, Inc.
Ars Libri Ltd.	Innovative Interfaces, Inc.
AskART	Levis Fine Art Auctions & Appraisals
Athabasca University	Michael R. Weintraub, Inc.
Banff Centre	Micromedia ProQuest
Banff Public Library	Mount Royal College
Canadian Association of College and University Libraries/Canadian Library Association (CACUL/CLA)	National Film Board of Canada
Christie's	Ontario College of Art & Design
Cohos-Evamy Architecture	Oxford University Press
Duncan Systems Specialists	Research Libraries Group (RLG)
	University of British Columbia
	University of Lethbridge

**The Banff Local Arrangements Committee also wishes to thank the following  
ARLIS/NA Chapters for their donations in support of the 34<sup>th</sup> Annual Conference:**

ARLIS/Montreal–Ottawa–Quebec	ARLIS/Ontario
ARLIS/Mountain West	ARLIS/Southeast
ARLIS/New England	ARLIS/Southern California
ARLIS/New York	ARLIS/Texas-Mexico
ARLIS/Northern California	ARLIS/Twin Cities
ARLIS/Northwest	ARLIS/Western New York



## EXHIBITORS

We are pleased the following exhibitors are participating in the Society's 34<sup>th</sup> Annual Conference. This list represents all exhibitors registered at the time of program printing. A complete list will be distributed to all conference attendees.

Artifact  
AskART  
The Believer  
Casalini Libri  
CSA  
Design Research Publications  
The Donohue Group  
Duncan Systems Specialists  
Erasmus – Amsterdam/Paris  
F. A. Bernett Inc.  
Harrassowitz  
Howard Karno Books, Inc.  
IDC Publishers BV  
Imschoot, Uitgevers  
LTB Media  
MicroMedia ProQuest/H.W. WILSON  
Oxford University Press  
Puvill Libros  
RLG  
SASKIA Ltd.  
Scholars' Resource  
Serbica Books  
Thomson Gale  
Vamp & Tramp, Booksellers, LLC  
Video Data Bank  
Willoughby Associates  
Worldwide Books  
YBP Library Services

## GENERAL INFORMATION

### OPEN MEETING AND GUEST POLICY

Business meetings are open to all members. Guests are welcome to attend, provided they are duly registered. For information on registering a guest, please visit the Registration Desk located in the Van Horne Foyer of the Conference Centre.

### FIRST TIME ATTENDEES

Welcome to Banff! Thank you for joining us for our 34th annual conference. If you have signed up for the Banff Conference Mentor Program, you should have received the name of your Mentor before the conference. If not, please check at the Registration Desk.

If you identified yourself as a first-time attendee when you registered for the conference, you will receive a ribbon in your registration bag. We recommend that you attach it to your name tag so that Mentors and others can help to make your first ARLIS/NA conference experience a success. Seasoned ARLIS/NA members and conference attendees can “show you the ropes.”

Remember, all of our meetings are open (unless otherwise noted in the Program) so please feel free to attend if you are interested. Chapter meetings are a good place to meet other attendees from your State or Province. See the Meeting Finder in the Program for details.

The First Time Attendees Orientation will be held Friday, May 5th from 5:00 – 6:00 pm in the D.C. Coleman Room, Conference Centre.

### STUDENT ATTENDEES

ARLIS/NA has numerous local Chapters, which are a perfect place to begin your professional involvement in the Society. The Chapters generally offer travel grants to assist students and new professionals attend the annual conference, in addition to providing

accessible local programming and support. Be sure to attend the Chapter meeting for your region, State or Province and connect with new colleagues.

Students are encouraged to attend the AskARLIS sessions *Building the ARLIS/NA Mentorship Program* on Saturday, May 6th 1:30 pm – 3:00 pm, and *Reaching Out: Chapter Links to Local Library Schools* on Sunday, May 7th 11:00 am – 12:00 pm. Your experiences and your suggestions are valuable to us as we develop the ARLIS/NA Mentorship Program.

This year’s program is packed full of other sessions and workshops (many of which are free) that you will find relevant and useful; those targeted especially to students have been purposely scheduled from Friday to Sunday for your convenience. There is a free *Resumé* workshop, and a session, *New Voices in the Profession*, which showcases the research work of recent grads.

The Student Affairs Discussion Group meets Saturday, May 6th from 6:10 – 7:00 pm in the Baron Shaughnessy Room of the Conference Centre. Student Attendees are invited to a Student Pub Social immediately following the Discussion Group meeting – meet at 7:00 pm outside the Baron Shaughnessy Room. Non-student attendees are welcome to join the group.

Remember to check out the Bulletin Board near the Registration Desk for Job Postings and other useful information.

### THE FAIRMONT BANFF SPRINGS HOTEL

In its contemporary reincarnation, The Fairmont Banff Springs, built by the CPR in 1888 to take advantage of the fairy-tale mountain setting, is a luxury hotel with 770 guest rooms and all modern amenities. The public areas, as well as many guest rooms, offer unique, breathtaking views of the mountains.

Resembling a Scottish baronial castle in style and ambience, the hotel boasts a dozen restaurants, ranging from cafeteria to five-star, gourmet dining. Within the hotel there are also lounges and nightspots, the Willow Stream spa, swimming pools, a bowling alley, a document service centre, a state-of-the-art conference centre, 76,000 square feet of meeting space, and many quality retail outlets. To learn more about the history and recent restoration of this historic hotel, be sure to sign up for one of the Banff Springs Hotel tours.

## **HOTEL SERVICES & AMENITIES**

### **Parking**

Parking is available at the Hotel for CAN\$19 per day if you park your car yourself or CAN\$26 for valet parking. There is free street parking close to the Hotel for short periods of time.

### **Hotel Dining**

Among the dozen or so hotel restaurants are:

- the Castle Pantry, open 24 hours a day, offers breakfast and lunch items such as eggs, toast, yogurt, fresh fruit, soups, salads, and sandwiches (the least expensive choice);
- the Bow Valley Grill offers breakfast and lunch buffets (resort casual dress);
- other venues offer Italian cuisine, German/Fondue, and English afternoon tea;
- more casual options include the Grapes Wine Bar and Bistro (no reservations, resort casual dress); and
- the Banffshire Club for fine dining (reservations & jacket required);

All offer a smoke-free environment.

### **At the Conference Centre**

The ARLIS/NA 2006 Banff Conference is providing coffee/tea breaks with the Exhibitors from 10:30 am – 11:00 am on Saturday and Sunday. During lunch breaks, a lunch cart

with food items from the Castle Pantry such as salads and sandwiches will be available as well in the Conference Centre's Van Horne Ballroom Foyer. Attendees may also purchase specialty coffees/cappuccinos in the Exhibits Hall and/or Foyer on Saturday from 12:30 pm – 3:30 pm, on Sunday from 12:00 – 3:00 pm and on Monday from 10:30 am – 1:30 pm. The Conference Centre, with doors opening to a large patio, offers attendees the opportunity to step outside and catch an invigorating breath of fresh mountain air during program breaks.

### **Swimming Pools for Hotel Guests**

Use of the 32-metre indoor pool, outdoor heated pool, indoor children's wading pool and indoor whirlpool is complimentary for hotel guests. Check in at the Willow Stream Spa desk.

### **Early Morning Run**

For those who prefer a morning run, the Fairmont Banff Springs offers guests a 'running station.' It is located in the main lobby right beside the entrance doors. While this station is not marked, it is easy to locate in the main lobby. It is available only from 6:00 am to 7:30 am and provides bottled water, running maps and towels.

### **President's club benefits**

If you signed up as a President's Club member, you receive complimentary daily in-room high-speed Internet, complimentary local calls, complimentary daily newspaper, complimentary access to a cardio and strength conditioning area which includes treadmills with a fabulous view (Check in at the Willow Stream Spa desk), 15% off The Fairmont Store, airline miles, and many more benefits.

### **Willow stream spa**

The Fairmont's Willow Stream Spa has 12 pools including cascading waterfall whirlpools, a private spa mineral pool, men's and women's private whirlpools, co-ed whirlpools, a year-

round outdoor whirlpool, a 32-metre saltwater indoor pool, a year-round 20-metre outdoor heated pool and a children's wading pool.

There are men's and women's private fireplace lounges, outdoor terraces, a sauna, inhalation and steam rooms, an aerobic studio, a cardio and strength conditioning area, full service beauty salon, a spa boutique, and coed resting lounge, along with appropriate spa services.

Daily fitness membership, per person, for hotel guests, is \$10/day or \$20/duration of stay.

Daily spa access for hotel guests is \$49 (\$59 for non-hotel guests). Facility hours are 6:00 am – 10:00 pm daily; spa services, 8:00 am – 8:00 pm daily. This popular spa does require reservations prior to arrival.

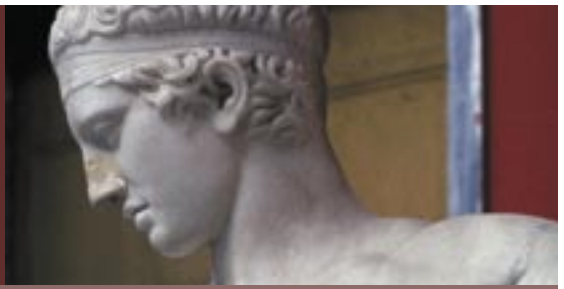
## **BANFF**

The resort town of Banff has over 7,000 permanent residents, and hosts millions of visitors each year from all over the world. A cosmopolitan center, Banff offers numerous

restaurants and lounges from fast food fairs to 5-star restaurants, two small grocery stores (Keller's and Safeway), a range of cultural institutions and landmarks, and a variety of outdoor activities close at hand.

To learn more about the history of Banff, check at the Registration Desk for a brochure on a self-guided Banff Culture Walk, or ask if there are still places in the Whyte Museum Historic Walk offered on Friday, May 5th. Additional information on what to see in Banff and the surrounding area will be available in your conference registration package and at the Registration/Hospitality Desk. The Hotel Concierge will also be able to assist you.

One can walk everywhere in Banff, and the Fairmont Banff Springs, is a 15-minute walk from downtown on a paved street. Or, for those who prefer, a shuttle bus departs from the Hotel every 30 minutes from 7:00 am until 11:00 pm daily. Cost is currently CDN \$2 per person one way. Taxis are also available and inexpensive since the distances are short.



## LICENSING THE SASKIA DIGITAL ARCHIVE

32,000 Digital Images of Core Art  
History Works Available for  
Permanent Accession at your Library

Images in the Saskia Archive have been photographed directly in front of each work of art, specifically for teaching art history over the course of the last 40 years by an art and architectural historian trained at Columbia University.



Licensing fees are determined on the basis of number of campuses, total number of students on campus, and the number of images licensed at any one time. Check at [www.scholarsresource.com/LicenseFees](http://www.scholarsresource.com/LicenseFees) for fees that apply to your campus.

Contact Renate Wiedenhoef at Saskia Ltd. at 1-877-SASKIA-2 x111 to discuss the total amount appropriate to your institution for licensing the Saskia Archive.

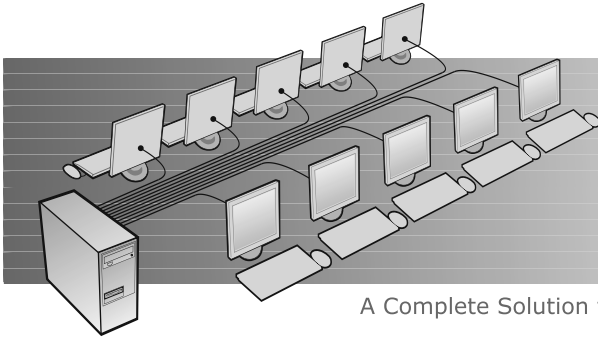
The Saskia archive is licensed and distributed exclusively through Scholars Resource at [www.scholarsresource.com](http://www.scholarsresource.com).

## ADVANTAGES OF LICENSING THE ENTIRE ARCHIVE:

- Substantial discount.
- One-time expense: all Saskia images are licensed in perpetuity and no subscription fees will ever be due.
- Saskia images are available campus-wide to all enrolled students and faculty through the campus network.
- Our data specialist is available to help integrate metadata free of charge for an initial period of time.
- Saskia images are delivered on a hard-drive or DVDs for permanent storage.
- Upgrades to the Saskia archive are offered on a yearly basis and available at regular rates.



At ARLIS/NA – Banff '06 Learn how to  
**cut computer costs by 50%**



**Features:**

- Locked down desktop
- Hands-off management
- Complete office suite
- Print cost control
- No IT expertise needed
- Supports over 30 languages

A Complete Solution for Public Computing

“DiscoverStation very much fits in with our university's environmental philosophy. It's eco friendly— DiscoverStation's ability to run many computers from a single box saves energy and reduces landfill.”

– James Forrester, Head of Systems & Technical Services  
 Ontario College of Art and Design

**DiscoverStation®** for Libraries

Join us at the  
 Internet cafe

**ARTbibliographies Modern**

**Design and Applied Arts Index (DAAI)**

**BHI: British Humanities Index**

**Guide to Discovery**

7200 Wisconsin Avenue  
 Suite 601  
 Bethesda MD 20814  
 USA

t +1 301.961.6700  
 f +1 301.961.6720

[www.csa.com](http://www.csa.com)



**Guide to Discovery**

**Art & Design Research Resources**

Coverage of the international literature delivered through the Web

- **ARTbibliographies Modern**
- **Design and Applied Arts Index (DAAI)**
- **BHI: British Humanities Index**

Also available through the CSA Illumina platform:

- *ATLA Religion Database*
- *FRANCIS*
- *Avery Index to Architectural Periodicals*
- *Index Islamicus*
- *BHI: British Humanities Index*
- *MLA International Bibliography*
- *Bibliography of the History of Art*
- *RILM Abstracts of Music Literature*
- *CSA Linguistics and Language Behavior Abstracts*
- *The Philosopher's Index*

**ARLIS / NA attendees can receive complimentary trial access to any of these resources.**

Please see the CSA representative or contact [sales@csa.com](mailto:sales@csa.com)

**Additional information:  
[www.csa.com](http://www.csa.com)**

## SPECIAL EVENTS

### ARLIS/NA FUNDRAISER SILENT AUCTION

*Friday, May 5, 4:00 pm – 8:00 pm*

*Saturday, May 6, 9:00 am – 4:00 pm*

*Sunday, May 7, 9:00 am – 1:20 pm*

Conference Centre | Van Horne Ballroom  
B & C

The ARLIS Fundraiser this year is a Silent Auction. Silent auction items will be available for viewing and bidding during all open Exhibit Hall hours.

On Sunday, please join us in the Exhibit Hall for a special Not-So-Silent Auction – at 12:30 pm at the Exhibits Closing Event where a local auctioneer, Doug Levis, will finish off the ‘silent’ auction bidding with an energetic live auction. Silent auction items continue to be available for viewing and bidding until the Not-So-Silent Auction begins. Support ARLIS/NA and come away with some great items!

### WELCOME / EXHIBIT HALL OPENING RECEPTION

*Friday, May 5, 6:30 pm – 9:00 pm*

Conference Centre | Van Horne Ballroom  
B & C

Door prizes to be drawn after Welcome Remarks.

Exhibit Hall closes at 8:00 pm. Reception continues in Van Horne Ballroom Foyer.

Description: Join all your fellow registrants in a warm Welcome for our returning and new Exhibitors, as we officially open the 34th annual conference. Enjoy hors d’oeuvres and a cash bar while you renew old acquaintances and make new ones. Familiarize yourself with the magnificent Conference Centre which will be the Exhibits site and focus of several Conference events such as the fundraiser silent auction.

Welcome Remarks by Dr. Ann Davis, Acting Director, Information Resources, and Director, Nickle Arts Museum, University of Calgary – at 7:00 pm.

The Welcome / Exhibit Hall Opening Reception is generously sponsored by Saskia Ltd with additional sponsorship from ARLIS/NA Chapters.

### LEADERSHIP BREAKFAST

*Saturday, May 6, 7:00 AM – 9:00 pm*

Banff Springs Hotel | New Brunswick/Alberta Room

By invitation only.

Breakfast generously sponsored by:  
E.A. Bennett Books.

Organized for current leaders of the Society, this breakfast meeting provides attendees with an opportunity to discuss issues central to the running of the Society.

### STUDENT PUB SOCIAL

*Saturday, May 6, 7:00 pm – 10:00 pm*

Not limited to students.

Meet in Conference Centre Foyer outside of the Baron Shaughnessy Room (where the Student Affairs Discussion Group will be finishing off.)

Organizer: Sarah Falls

### A TASTING OF FINE CANADIAN WINE

*Saturday, May 6, 7:00 pm – 8:00 pm*

Banff Springs Hotel | Ivor Petrak Room

Indulge your senses! Treat your palette to the excellence of Canadian wine, in one of the world’s most beautiful settings. The Sommelier from the Banff Springs Hotel will lead a tasting of Canadian wines while explaining the

basics of smell, color, grape varieties and their identification. This promises to be an event of singular elegance. Guests will be given tasting notes to record their experience.

## **SOCIETY CIRCLE RECEPTION**

*Saturday, May 6, 8:30 pm – 10:30 pm*

By invitation only

The Society Circle supports the work of ARLIS/NA through personal donations by Circle members. To learn more about the Society Circle and become a member visit the Registration Desk.

## **FILM NIGHT**

*Saturday, May 6, 9:00 pm - 12:00 am*

Conference Centre | Theatre

Join us for a viewing of films selected by ARLIS/NA members Jane Devine and Jill Patrick. The National Film Board of Canada (NFB) has been a world leader in animation and documentary filmmaking for over 65 years. Its award-winning films present a uniquely Canadian perspective that both entertains and challenges the viewer. A list of the films to be screened will be available at the Registration Desk upon your arrival.

Generously sponsored by: the National Film Board of Canada

## **EXHIBIT HALL CLOSING / NOT-SO-SILENT AUCTION EVENT AND ICE CREAM SOCIAL**

*Sunday, May 7, 12:00 pm – 1:30 pm*

Conference Centre | Van Horne Ballroom  
B & C

This is your final opportunity to meet with the Exhibitors and to participate in the ARLIS/NA Fundraiser Silent Auction before the Not-So-Silent Auction to be held 12:30 pm – 1:20 pm today when a local auctioneer, Doug Levis, will

finish off the 'silent' auction bidding with an energetic live auction.

Ice cream bars will be provided.

Lunch cart to purchase salads and sandwiches will be available in the Conference Centre foyer for your convenience.

Exhibits remain open until 2:30 pm.

## **CONVOCATION CEREMONY**

*Sunday, May 7, 6:30 pm – 8:30 pm*

Banff Springs Hotel | Cascade Ballroom

This year's Convocation Ceremony will take place in the Cascade Ballroom of the Fairmont Banff Springs Hotel. The ballroom's turn-of-the-century elegance, complete with painted ceilings and ubiquitous mountain views, will provide a stunning backdrop for an enchanted evening ceremony.

The agenda for this year's Convocation is a full one. The Society will honor the latest recipient of the Distinguished Service Award and present a variety of awards ranging from travel to research to publications.

Following the ceremony, attendees will be treated to a crowd-pleasing comedy performance by The Shakespeare Company, a critically acclaimed acting ensemble from Calgary. With a cheeky blend of humor and passion, the actors will present a thirty-minute glimpse into selected works of William Shakespeare and his views on love. What better place for this than in an elegant castle ballroom?

The Convocation Ceremony remains a special highlight of the conference, as it presents an opportunity to honor recipients of awards and to thank our sponsors for their continued support.



## CONVOCATION RECEPTION

*Sunday, May 7, 8:30 pm – 11:00 pm*

Banff Springs Hotel | Riverview Lounge/  
Conservatory

Reception with a cash bar.

Bask in the glamour of your surroundings. Glide about in formal evening wear, sleek understated elegance, or your favorite cocktail dress. This is a chance to let your inner starlet out for the night. Immediately following the Convocation ceremony, the reception will commence in the adjacent Riverview Lounge and Conservatory. Imagine yourself circulating in this luxurious setting, sipping your cocktail of choice, and enjoying Duo Rouge, a violin/viola duo based out of Banff, Alberta.

Generously co-sponsored by: University of Alberta Learning Services, University of Calgary Information Resources, University of Lethbridge Library and Department of Fine Arts, Athabasca University, Mount Royal College Library and Department of Interior Design, the Alberta College of Art and Design and the Ontario College of Art & Design.

## COMIC CRAZE EXHIBITION AND RECEPTION

*Monday, May 8, 6:30 pm – 8:30 pm*

Banff Centre | Walter Phillips Gallery of  
Contemporary Art

Includes reception with cash bar.

Buses depart from the Banff Springs Hotel's Motor Coach Entrance shuttling attendees to the Banff Centre between 6:15 pm and 6:45 pm; the bus will drop interested attendees off downtown on the way back to the Hotel starting at 7:45 pm.

Comic Craze is an exhibition, a fair, and a symposium, inspired by the format of a comic convention. The exhibition explores the elements of comic culture – comic books, zines, graphic novels, as well as those involved in interpretation, collecting, merchandising, publishing – together in a public forum, and with a primarily Canadian focus.

Generously sponsored by: Walter Phillips Gallery of Contemporary Art, Banff Centre

## MEETING FINDER

TITLE	DATE
Academic Library Division	Sunday, May 7
Architecture Section	Saturday, May 6
ARLIS/Midstates Chapter 2009 Conference Planning	Monday, May 8
ARLIS/NA Executive Board	Friday, May 5
ARLIS/NA Executive Board	Tuesday, May 9
ARLIS/NA – VRA S.E.I. Implementation Committee	Saturday, May 6
ARLIS/NA – VRA S.E.I. Joint Advisory Committee	Sunday, May 7
Art and Design School Library Division	Sunday, May 7
Artists Files Working Group	Sunday, May 7
ARTstor Users Group	Sunday, May 7
Avery/BHA/Getty Vocabularies Users Group	Saturday, May 6
Awards Committee	Saturday, May 6
Book Arts Round Table	Monday, May 8
Cataloging Advisory Committee	Saturday, May 6
Cataloging Problems Discussion Group	Sunday, May 7
Cataloging Section	Saturday, May 6
Chapter Meetings	Monday, May 8
Collection Development Discussion Group	Sunday, May 7
Committee on Institutional Cooperation	Saturday, May 6
Conference Planning Advisory Committee (CPAC)	Monday, May 8
Decorative Arts Round Table (DART)	Sunday, May 7
Development Committee	Saturday, May 6
Distinguished Service Award Committee	Saturday, May 6
Diversity Committee	Saturday, May 6
Finance Committee	Sunday, May 7
First Time Attendees	Friday, May 5
Gay and Lesbian Interests Round Table (GLIRT)	Monday, May 8

TIME	ROOM ASSIGNMENT
3:10 pm – 4:30 pm	Conference Centre   Van Horne Blrm A
4:40 pm – 6:00 pm	Conference Centre   Van Horne Blrm A
9:00 am – 10:00 am	Banff Springs Hotel   Angus
9:00 am – 5:00 pm	Banff Springs Hotel   Norquay
9:00 am – 5:00 pm	Banff Springs Hotel   Norquay
9:00 am – 10:30 am	Banff Springs Hotel   Norquay
4:30 pm – 6:00 pm	Banff Springs Hotel   McKenzie
3:00 pm – 4:30 pm	Banff Springs Hotel   Norquay
4:40 pm – 6:00 pm	Banff Springs Hotel   Van Horne Blrm A
7:00 am – 8:30 am	Conference Centre   Shaughnessy/Beatty
3:10 pm – 4:30 pm	Conference Centre   D.C. Coleman
6:00 pm – 7:00 pm	Banff Springs Hotel   Empress
3:30 pm – 4:30 pm	Conference Centre   Oak
6:10 pm – 7:00 pm	Conference Centre   D.C. Coleman
4:40 pm – 6:00 pm	Conference Centre   D.C. Coleman
4:40 pm – 6:00 pm	Conference Centre   D.C. Coleman
7:30 am – 9 :00 am	Various locations; see schedule.
4:40 pm – 6:00 pm	Conference Centre   Baron Shaughnessy
6:00 pm – 8:00 pm	Conference Centre   Sir Edward Beatty
3:30 pm – 5:30 pm	Banff Springs Hotel   Norquay
4:30 pm – 6:00 pm	Banff Springs Hotel   Champlain
6:10 pm – 7:00 pm	Conference Centre   Van Horne Blrm A
7:10 pm – 8:00 pm	Banff Springs Hotel   Palliser
6:00 pm – 7:00 pm	Banff Springs Hotel   Palliser
8:00 am – 9:00 am	Banff Springs Hotel   Norquay
5:00 pm – 6:00 pm	Banff Springs Hotel   Alberta Room
4:30 pm – 5:30 pm	Banff Springs Hotel   Angus

## MEETING FINDER (CONTINUED)

TITLE	DATE
Gerd Muehsam Award Committee	Plans to self-schedule.
Grove Art Online Users Group	Monday, May 8
International Relations Committee (IRC)	Saturday, May 6
Membership Committee	Saturday, May 6
Membership Meeting	Monday, May 8
Museum Library Division	Sunday, May 7
New Art Round Table	Monday, May 8
Nominating Committee	Saturday, May 6
Photography Librarians Discussion Group	Sunday, May 7
Professional Development Committee	Saturday, May 6
Public Library Round Table	Sunday, May 7
Public Policy Committee	Saturday, May 6
Publications Committee	Saturday, May 6
Reference and Information Services Section (RISS)	Saturday, May 6
Research Awards Committee	Saturday, May 6
RLG Round Table	Saturday, May 6
SCIPIO Users Group	Monday, May 8
Serials Round Table	Monday, May 8
Solo Librarians Discussion Group	Sunday, May 7
Space Planners Round Table (SPRT)	Monday, May 8
Standards Committee	Saturday, May 6
Student Affairs Discussion Group	Saturday, May 6
Teaching Librarians Discussion Group	Sunday, May 7
Visual Resources Division (VRD)	Sunday, May 7
Volunteer Orientation	Friday, May 5
Women and Art Round Table (WomART)	Monday, May 8

TIME	ROOM ASSIGNMENT
12:40 pm – 1:30 pm	Conference Centre   Shaughnessy/Beatty
6:00 pm – 8:00 pm	Banff Springs Hotel   Oak
6:00 pm – 7:30 pm	Banff Springs Hotel   Champlain
1:30 pm – 3:30 pm	Conference Centre   Van Horne Blrm A
3:10 pm – 4:30 pm	Conference Centre   Baron Shaughnessy
3:30 pm – 4:20 pm	Banff Springs Hotel   Angus
6:00 pm – 7:30 pm	Banff Springs Hotel   Lacombe
4:40 pm – 6:00 pm	Conference Centre   Norquay
6:00 pm – 7:30 pm	Banff Springs Hotel   Angus
3:40 pm – 4:30 pm	Conference Centre   D.C. Coleman
6:00 pm – 7:30 pm	Banff Springs Hotel   Strathcona
7:10 pm – 8:00 pm	Conference Centre   D.C. Coleman
4:40 pm – 6:00 pm	Conference Centre   Baron Shaughnessy
7:00 pm – 8:00 pm	Banff Springs Hotel   Empress
3:10 pm – 4 :30 pm	Conference Centre   Van Horne Blrm A
3:30 pm – 4:30 pm	Conference Centre   Ivor Petrak
3:30 pm – 4:30 pm	Check board at Registration Desk.
4:30 pm – 6:00 pm	Banff Springs Hotel   Palliser
3:30 pm – 4:30 pm	Conference Centre   Sir Edward Beatty
6:00 pm – 7:30 pm	Banff Springs Hotel   McKenzie
6:10 pm – 7:00 pm	Conference Centre   Baron Shaughnessy
4:40 pm – 6:00 pm	Conference Centre   Sir Edward Beatty
3:10 pm – 4:30 pm	Conference Centre   Sir Edward Beatty
9:00 am – 10 :00 am	Conference Centre   Van Horne Foyer
3:30 pm – 4:30 pm	Banff Springs Hotel   Strathcona

## CONFERENCE EVENTS AT-A-GLANCE

EVENT	DAY
ARLIS/NA Fundraiser Silent Auction	
Viewing / Bidding	Friday, May 5
Viewing / Bidding	Saturday, May 6
Viewing / Bidding	Sunday, May 7
Not-So-Silent Auction	Sunday, May 7
Comic Craze Exhibition and Reception	Monday, May 8
Convocation Ceremony	Sunday, May 7
Convocation Reception Conservatory	Sunday, May 7
Exhibit Hall and Internet Café Hours	Friday, May 5 Saturday, May 6 Sunday, May 7
Exhibit Hall Coffee Breaks	Saturday, May 6 Sunday, May 7
Exhibit Hall Closing, Not-So-Silent Auction Event and Ice Cream Social	Sunday, May 7
First Time Attendees Orientation	Friday, May 5
Leadership Breakfast	Saturday, May 6
Membership Meeting	Monday, May 7
NFB Film Night	Saturday, May 6
Registration / Hospitality Desk	Thursday, May 4 Friday, May 5 Saturday, May 6 Sunday, May 7 Monday, May 8 Tuesday, May 9
Society Circle Reception	Saturday, May 6?
Student Pub Social	Saturday, May 6
A Tasting of Fine Canadian Wine	Saturday, May 6
Welcome / Exhibit Hall Opening Reception	Friday, May 5
Yoga in Banff	Saturday, May 6 Sunday, May 7 Monday, May 8

The meeting rooms listed are those assigned at the time of program printing. Circumstances may dictate changes. If you have any questions, please visit the Registration Desk.

TIME	LOCATION
4:00 pm – 8:00 pm	Conference Centre   Van Horne Ballroom B & C
9:00 am – 4:00 pm	Conference Centre   Van Horne Ballroom B & C
9:00 am – 12:30 pm	Conference Centre   Van Horne Ballroom B & C
12:30 pm – 1:20 pm	Conference Centre   Van Horne Ballroom B & C
6:30 pm – 8:30 pm	Banff Centre   Walter Phillips Gallery
6:30 pm – 8:30 pm	Banff Springs Hotel   Cascade Ballroom
8:30 pm – 11:00 pm	Banff Springs Hotel   Riverview Lounge/
4:00 pm – 8:00 pm	Conference Centre   Van Horne Ballroom B & C
9:00 am – 4:00 pm	Conference Centre   Van Horne Ballroom B & C
9:00 am – 2:30 pm	Conference Centre   Van Horne Ballroom B & C
10:30 am – 11:00 am	Conference Centre   Van Horne Ballroom B & C
10:30 am – 11:00 am	Conference Centre   Van Horne Ballroom B & C
12:00 pm – 1:30 pm	Conference Centre   Van Horne Ballroom B & C
5:00 pm – 6:00 pm	Banff Springs Hotel   Alberta Room
7:00 am – 9:00 am	Banff Springs Hotel   New Brunswick/Alberta Rooms
1 :30 pm – 3:30 pm	Conference Centre   Van Horne Ballroom A
9:00 pm – 12:00 am	Conference Centre   Theatre
8:00 am – 6:00 pm	Conference Centre   Van Horne Foyer
7:30 am – 8:00 pm	Conference Centre   Van Horne Foyer
7:30 am – 6:30 pm	Conference Centre   Van Horne Foyer
8:00 am – 6:30 pm	Conference Centre   Van Horne Foyer
8:00 am – 5:30 pm	Conference Centre   Van Horne Foyer
7:30 am – 10:00 am	Conference Centre   Van Horne Foyer
8:30 pm – 10:30 pm	See invitation
7:00 pm – 10:00 pm+	Meet in Conf. Centre Foyer by Baron Shaughnessy Room
7:00 pm – 8:00 pm	Banff Springs Hotel   Ivor Petrak
6:30 pm – 9:00 pm	Conference Centre   Van Horne Ballroom B & C/Foyer
7:00 am – 8 :00 am	Banff Springs Hotel   Conservatory
7:00 am – 8 :00 am	Banff Springs Hotel   Conservatory
7:00 am – 8 :00 am	Banff Springs Hotel   Conservatory

# PROGRAM SCHEDULE THURSDAY, MAY 4 / FRIDAY, MAY 5

All events are listed in chronological order. When two or more programs or events begin at the same time, later ending times precede earlier ending times.

The meeting rooms listed are those assigned at the time of program printing. Circumstances may dictate changes. If you have any questions, please visit the Registration Desk.

## ***Thursday, May 4***

**8:00 am – 6:00 pm**

---

### **Registration Desk Open**

(Conference Centre | Van Horne Foyer)

**9:00 am – 5:00 pm**

---

### **Pre-Conference Workshop**

Copying Right in the Canadian Context:  
Looking at the Arts and Images

(Conference Centre | D.C. Coleman)

*Workshop Leader:*

Wanda Noel, Canadian Copyright Lawyer  
and Consultant

*Moderator:*

Wendy Stephens, University of Calgary

*Presented by: the Canadian Heritage  
Information Network, with additional support  
provided by CACUL (Canadian Association  
of College and University Libraries).*

## ***Friday, May 5***

**7:30 am – 8:00 pm**

---

### **Registration / Hospitality Desks Open**

(Conference Centre | Van Horne Foyer)

**9:00 am – 5:00 pm**

---

### **ARLIS/NA Executive Board Meeting**

(Banff Springs Hotel | Norquay Room)

Open to membership on a seating-available  
basis.

### **Workshop 2**

Standards for the Description of Photographs

(Conference Centre | Sir Edward Beatty)

*Workshop Leader:*

Martha R. Mahard, Assistant Professor,  
Graduate School of Library and Information  
Science, Simmons College

**9:00 am – 4:00 pm**

---

### **Workshop 1**

Digitization Strategies for Preservation and  
Access

(Banff Springs Hotel | Alberta Room)

*Workshop Leader:*

Howard Brainen, Consultant and Director,  
Two Cat Digital

**9:00 am – 12:30 pm**

---

### **Workshop 4-A**

Planning Effective Classroom Instruction

(Conference Centre | D.C. Coleman)

*Workshop Leaders:*

Rosalie Pedersen, Instructor, Learning  
Commons, University of Calgary

Julie Weible, Instructor, Learning Commons,  
University of Calgary

*Moderator:*

Lucie Stylianopoulos, University of Virginia

**9:00 am – 11:00 am**

---

### **Workshop 5-A**

Collection Development and Assessment PART  
A: Collection Development Strategies

(Conference Centre | Baron Shaughnessy)

*Workshop Leader:*

Sarah E. McCleskey, Head of Access Services,  
Axinn Library, Hofstra University

*Moderator:*

Nensi Brailo, California College of the Arts



**9:00 am – 10:00 am**

---

**Volunteer Orientation**

(Conference Centre | Registration Desk)

**9:30 am – 12:00 pm**

---

**Workshop 3-A**

They Never Covered This in Library School—  
Resources for Architecture PART A: History  
and Theory

(Offsite: Banff Centre | Computer Lab—  
Transportation departs from Banff Springs  
Hotel's Motor Coach Entrance at 9:00 am)

*Speakers:*

Prof. Graham Livesey, Architecture Program  
Director, Faculty of Environmental Design,  
University of Calgary

Prof. Catherine Hamel, Assistant Professor  
of Architecture, Faculty of Environmental  
Design, University of Calgary

Rebecca Price, Architecture & Urban  
Planning and Visual Resources Librarian,  
Art, Architecture & Engineering Library,  
University of Michigan

Alan Michelson, Head, Architecture—Urban  
Planning Library, University of Washington

*Moderators:*

Rebecca Price, University of Michigan, and  
Alan Michelson, University of Washington

**10:00 am – 12:00 pm**

---

**Tour 1-A**

Sulphur Mountain Gondola

(Tour departs from Banff Springs Hotel's Motor  
Coach Entrance at 10:00 am)

**11:30 am – 1:30 pm**

---

**Workshop 5-B**

Collection Development and Assessment PART  
B: Collection Assessment Techniques & Tools

(Conference Centre | Baron Shaughnessy)

*Workshop Leaders:*

Helen Clarke, Head, Collection Services, &  
Electronic Resources Librarian, University of  
Calgary

Heather D'Amour, Monographs & Gifts  
Librarian, Collection Services, University of  
Calgary

*Moderator:*

Kim Collins, Emory University

**1:00 pm – 5:00 pm**

---

**Workshop 7**

ARLIS/NA Mentoring Initiative: a Workshop  
for Mentors and Mentees

(Banff Springs Hotel | Oak Room)

*Workshop Leader:*

Margaret Law, Associate Director of  
Libraries, University of Alberta

*Moderators:*

V. Heidi Hass, Pierpont Morgan Library and  
Tony White, Pratt Institute

*Generously sponsored by: Cohos-Evamy  
Architecture*

**1:00 pm – 4:00 pm**

---

**Workshop 3-B**

They Never Covered This in Library School—  
Resources for Architecture PART B: Design and  
Emerging Related Disciplines

(Offsite: Banff Centre | Computer Lab  
— Transportation departs from Banff Springs  
Hotel's Motor Coach Entrance at 9:00 am)

*Speakers:*

John Brown, Professor of Architecture,  
Faculty of Environmental Design, University  
of Calgary

Tang Lee, Professor of Architecture, Faculty of  
Environmental Design, University of Calgary

Rebecca Price, Architecture & Urban  
Planning and Visual Resources Librarian,  
Art, Architecture & Engineering Library,  
University of Michigan

Alan Michelson, Head, Architecture—Urban  
Planning Library, University of Washington

*Moderators:*

Rebecca Price, University of Michigan, and  
Alan Michelson, University of Washington

## FRIDAY, MAY 5

### 1:00 pm – 2:30 pm

#### **Tour 3.**

The Whyte Museum Banff Historic Walk

(Tour departs from the Whyte Museum at 1:00 pm. Optional: Meet in the Banff Springs Hotel Main Lobby at 12:30 pm to walk down to the Museum as a group.)

### 1:00 pm – 2:00 pm

#### **Tour 2-A**

The Banff Springs Hotel Tour

(Tour starts in Rundle Hall, Mezzanine One at 1:00 pm)

### 1:30 pm – 5:00 pm

#### **Workshop 4-B**

Teaching by Design: Adapting Instructional Strategies to Meet Diverse Learning Needs  
(Conference Centre | D.C. Coleman)

##### *Workshop Leaders:*

Rosalie Pedersen, Instructor, Learning Commons, University of Calgary

Julie Weible, Instructor, Learning Commons, University of Calgary

##### *Moderator:*

Lucie Stylianopoulos, University of Virginia

### 2:00 pm – 5:00 pm

#### **Workshop 6**

Artists' Books: Strategies for Collecting

(Banff Springs Hotel | New Brunswick Room)

##### *Workshop Leaders:*

AA Bronson, Executive Director, Printed Matter Inc.

Max Schumann, Associate Director, Printed Matter Inc.

### 2:00 pm – 3:00 pm

#### **Tour 2-B**

The Banff Springs Hotel Tour

(Tour starts in Rundle Hall, Mezzanine One at 2:00 pm)

### 3:00 pm – 5:00 pm

#### **Tour 4**

The Whyte Museum of the Canadian Rockies Tour

(Tour begins at the Whyte Museum at 3:00 pm. Optional: Meet in the Banff Springs Hotel Main Lobby at 2:30 pm to walk down to the Museum as a group.)

### 3:00 pm – 4:00 pm

#### **Tour 2-C**

The Banff Springs Hotel Tour

(Tour starts in Rundle Hall, Mezzanine One at 3:00 pm)

### 4:00 pm – 8:00 pm

#### **Exhibit Hall, Internet Café, and Silent Auction Viewing / Bidding Hours**

(Conference Centre | Van Horne B & C)

*Internet Café generously sponsored by: Useful*

### 4:00 pm – 5:00 pm

#### **Tour 2-D**

The Banff Springs Hotel Tour

(Tour starts in Rundle Hall, Mezzanine One at 4:00 pm)

### 5:00 pm – 6:00 pm

#### **First Time Attendees Orientation**

(Banff Springs Hotel | Alberta Room)

### 6:30 pm – 9:00 pm

#### **Welcome / Exhibit Hall Opening Reception**

(Conference Centre | Van Horne B & C / Foyer)

*Reception generously sponsored by: Saskia, Ltd. and ARLIS/NA Chapters.*

**Saturday, May 6**

**6:30 am – 8:00 am**

---

**Tour 5-C**

Early Morning Nature Walk

(Tour departs from Banff Springs Hotel Main Lobby at 6:30 am)

**7:00 am – 9:00 am**

---

**Leadership Breakfast**

(Banff Springs Hotel | New Brunswick: Breakout Rooms: Alberta and Champlain)

BY INVITATION ONLY.

*Breakfast generously sponsored by:  
F.A. Bennett Books.*

**7:00 am – 8:00 am**

---

**Yoga in Banff**

(Banff Springs Hotel | Conservatory)

**7:30 am – 6:30 pm**

---

**Registration / Hospitality Desks Open**

(Conference Centre | Van Horne Foyer)

**9:00 am – 4:00 pm**

---

**Exhibit Hall, Internet Café, and Silent**

**Auction Viewing / Bidding Hours**

(Conference Centre | Van Horne B & C)

*Internet Café generously sponsored by: Useful*

**9:00 am – 12:30 pm**

---

**Workshop 8**

Collection Development, Acquisitions, and Vendor Relations

(Conference Centre | D.C. Coleman)

*Workshop Leaders:*

Alyssa Resnick, Senior Library Supervisor,  
Brand Library (Glendale Public Library)

Dawn Henney, Acquisitions Supervisor,  
University of California, Los Angeles

**9:00 am – 10:30 am**

---

**Meeting**

ARLIS/NA-VRA Summer Educational Institute Implementation Committee

(Banff Springs Hotel | Norquay Room)

*Co-Chairs:*

Trudy Jacoby (ARLIS/NA) and  
Karin Whalen (VRA)

**Session 1**

Speaking Out: Native American Artists and Collaborations with Museums, Universities, and Libraries

(Conference Centre | Shaughnessy / Beatty)

This is a unique opportunity to hear Native American artists speak out about their art and how they deal with questions of cultural identity, symbolism, spiritual values, individualism, history and their relationship to their Native communities. The artists will describe their personal artistic styles and show examples of their artwork. A curator/ university lecturer and art librarian will dialog with the artists' presentations and answer the question "what can museums, universities, and library collections do to make relevant the ideas of contemporary Native American Artists?"

*Speakers:*

Joane Cardinal-Schubert, Blood (Blackfoot),  
Peigan, First Nations Artist

Jane Sproull Thomson, Lecturer, University  
of Calgary, and Curator of Art, Red Deer  
College, *Native Art Sources Used by Curators  
and Teachers*

Marilyn Russell, Ojibwe, Director of Library  
Programs, Institute of American Indian Arts,  
*How Art Libraries Support Native American  
Artists.*

*Moderator:*

Patricia Cutright, Pratt Institute

# SATURDAY, MAY 6

## Session 2

Planning for Posterity: The Preservation of Art and Architecture Materials

(Conference Centre | Van Horne Blrm A)

The panel will focus on a critical issue for all art and architecture librarians: how to best preserve our collections. Art and architecture collections present particular challenges because of their range of physical formats and dimensions (print, microform, digital and multimedia, rare materials, unique artists' books, photographs, drawings, vertical files, etc.) and their chronological breadth, from early printed books to recent publications. The four speakers will explore various aspects of preservation, including collection assessment, dealing with rare and special materials, strategies for working within a limited budget and current approaches to paper treatment and the preservation of audiovisual and digital media.

### *Speakers:*

Dr. David Grattan, Canadian Conservation Institute

Paper by Nancy Schrock, Chief Collections Conservator, Widener Library, Harvard University, delivered by Amanda Bowen

Ann Marie Holland, Preservation Librarian, McGill University

Tony White, Assistant Professor and Art and Architecture Librarian, Pratt Institute

### *Moderators:*

Jane Devine Mejia, and Marilyn Berger, McGill University

---

**10:30 am – 11:00 am**

## Coffee/Tea Break with Exhibitors

(Conference Centre | Van Horne B & C)

*Generously sponsored by:*

*Erasmus Boekhandel BV*

## Poster Session 1

Digital Image Rights Computator (DIRC)

(Conference Centre | Van Horne B & C)

### *Presenter:*

Marlene E. Gordon, Senior Associate Curator, University of Michigan-Dearborn

## Poster Session 2

Women Artists in Canada 1800-1950:

A Bio-Bibliographic Web Database

(Conference Centre | Van Horne B & C)

### *Presenters:*

Dr. Janice Anderson, Visual Resources Curator, Department of Fine Arts, Concordia University

Melinda Reinhart, Visual Arts/Reference Librarian, Concordia University

## Poster Session 7

The History of Art Libraries in Canada

(Conference Centre | Van Horne B & C)

### *Presenter:*

Jo Beglo, Bibliographer, Library & Archives, National Gallery of Canada

---

**11:00 am – 12:30 pm**

## Session 3

The Canadian Pacific Railway, National Parks, and the Great Lodges of the Rockies

(Conference Centre | Shaughnessy / Beatty)

To attract travelers to this extraordinary destination, the Canadian Pacific Railway (CPR) commissioned and produced hundreds of beautifully illustrated posters. Banff National Park was established in 1885 – the rustic building tradition in the Parks inspired the designation of several historic sites, including Twin Falls Tea House and Skoki Lodge. Several luxury hotels opened along the Railway line – many were built in the style of European castles. The Banff Springs Hotel was one of the earliest of these, opening in 1888. The speakers will discuss the history of the Canadian Pacific Railway, CPR poster design and production, the rustic building traditions in the National Parks, and the architectural history of the Great Lodges of the Rocky Mountains.

*Speakers:*

David Jones, Manager, Internal Communications, Canadian Pacific Railway, *The Wonder Merchants: Poster Artists of the World's Greatest Travel System*

C. James Taylor, Historian, National Parks Canada, *The Architecture of the Canadian Pacific Railway Resorts in Banff and Yoho National Parks*

*Moderator:*

Kathy Woodrell, Library of Congress

**Session 4**

Improving Access to Images and Metadata

(Conference Centre | Van Horne Blrm A)

This session will explore improving access to images and metadata through technical innovation, consortial sharing, licensing, enhanced cataloging, and better understanding our users. As the demand for digital images and high-quality descriptive metadata is soaring, the ideas presented in this panel show innovative solutions for keeping up with the insatiable appetite of the academic environment for image content. Marvel about a peer-to-peer project bringing legitimate file-sharing to digital images in academic collections. Learn about a vision for licensed resources operating as building blocks for your institution's tailored digital image collection. Consider the importance of subject cataloging and how non-experts search art images. Learn about how audiences for our image collections are broadening and how cataloging practice is changing to meet the needs of these new users.

*Speakers:*

Henry Pisciotta, Arts and Architecture Librarian, Penn State University, *LionShare's Peer-to-Peer Approach and the Race to the Un-database*

Günter Waibel, Program Officer, RLG, *No Data is an Island, Entire of Itself*

Eileen Fry, Slide Librarian, Indiana University, *Of Torquetums, Flute Cases, and Puff Sleeves: the Role of the Image Cataloger in Non-Art Historical Subject Indexing*

Ann Whiteside, Head, Rotch Library of Architecture and Planning, Massachusetts Institute of Technology, *New Users, New Cataloging Perspectives*

*Moderator:*

Trish Rose, University of California, San Diego

*Generously sponsored by: Micromedia ProQuest*

**1:30 pm – 5:00 pm**

---

**Workshop 9**

Postcards from the Edge: Reference and Instruction for Film Studies

(Offsite: Banff Centre | Computer Lab)

*Workshop Leader:*

Nedda H. Ahmed, Fine Arts Librarian, Denison University

*Computer lab generously sponsored by: The Banff Centre*

**1:30 pm – 3:00 pm**

---

**Session 5**

Aggregated Image Collections: Enriching and Aggravating?

(Conference Centre | Van Horne Blrm A)

Multiple digital image aggregations are available for licensing. Many institutions are subscribing to multiple aggregated image products. The products provide a host of challenges for all institutions in the areas of collection development, technical capabilities, and licensing. The price tags are high, as is the functionality. This session seeks to compare and contrast the features of the most prominent licensable image collections: ARTstor, RLG Cultural Materials, the AP Photo Archive, Wilson Images, Getty Images, Bridgeman, and others. Speakers will provide

## SATURDAY, MAY 6

an overview of the products available (their content, technical capabilities, and classroom functionality); collection development issues; and the roll-out of multiple products within an institution.

### *Speakers:*

Margaret Webster, Director, Knight Visual Resources Facility, Cornell University, *Pandora's Box: You've Licensed it; Now What?*

Maryly Snow, Librarian, Architecture Visual Resources Library, University of California, Berkeley, *Rolling Out UC Image Service*

Deborah K. Ultan Boudewyns, Art History & Performing Arts Librarian; Subject Instruction Coordinator, University of Minnesota, *Licensable Digital Image Collections: Making or Breaking Collection Practices*

### *Moderator:*

Ann Whiteside, Massachusetts Institute of Technology

*Generously sponsored by: RLG*

### **Session 6**

**Ask ARLIS: Building the ARLIS/NA Mentorship Program**

(Conference Centre | D.C. Coleman)

This AskARLIS session is designed to facilitate a successful year-round mentoring program in accordance with the ARLIS/NA Strategic Plan for 2000-2005. The program will both inform members about the process and benefits of mentoring, and solicit their input, which is vital to involvement in a formal mentoring program. The session will include: a summary of the Mentorship Task Force report; results of a membership survey carried out by the program sponsors in early 2006; an overview of formal mentoring programs by a librarian in the field, and experience of a recent graduate and mentee who is now a mentor. Discussion elements will include guidance for potential mentors and mentees and real life experience in these roles.

### *Speakers:*

Tony White, Art & Architecture Librarian, Pratt Institute, *Planning a Year-long Pilot Mentoring Program for ARLIS/NA*

Margaret Law, Associate Director of Libraries, University of Alberta, *The Mentoring Relationship*

Jennifer Parker, Art & Architecture Librarian, University of Colorado at Boulder, *Building and Fostering the Mentor / Mentee Relationship*

### *Moderator:*

V. Heidi Hass, Co-chair of the Mentorship Task Force

### **Session 16**

**Promise and Constraints: What Case Studies Tell About National Art Libraries**

(Conference Centre | Shaughnessy / Beatty)

This session presents a global view of national art libraries. It focuses on current organizational changes taking place in Europe and North America in national art libraries and on collaboration between a national library and other art libraries "down under." The future promise and constraints facing national institutions in Australia, Britain, Canada, France, and the United States are illuminated using the case study method. These case studies are drawn from in-depth interviews with the leaders who are responsible for the administration of these libraries, statistical comparisons, observations, examination of programs, and on-site visits.

### *Speakers:*

Susan M. Allen, Associate Director and Chief Librarian, Getty Research Institute, *Promise and Constraints: The Future of Three National Art Libraries*

Linda Groom, Pictures Librarian, National Library of Australia, *Co-operation Between a National Library and Arts Libraries; a Case Study from Australia*

Jonathan Franklin, Head of Collections and Data Base Management, National Gallery of Canada Library, *Beyond the Pavilion of Museology: The National Gallery of Canada Library*

*Moderator:*

Susan M. Allen, Getty Research Institute

**3:10 pm – 4:30 pm**

---

**Meetings**

Avery/BHA/Getty Vocabularies Users Group

(Conference Centre | D.C. Coleman)

*Moderator:* Ted Goodman

RLG Round Table

(Conference Centre | Van Horne Blrm A)

*Presenters and Respondents:*

Günter Waibel, RLG

Pamela Dewey, RLG

Deborah Kempe, Frick Art Reference Library

Susan Allen, Getty Research Institute

Eileen Fry, Indiana University, Bloomington

Maryly Snow, University of California, Berkeley

Amy Lucker, Harvard University

*Moderator:*

Günter Waibel, RLG

ARTbibliographies Modern (ABM) and Design & Applied Arts Index (DAAI) Users Group

(Conference Centre | Baron Shaughnessy)

*Speakers:*

Rachel Brockhurst, ABM Editor, CSA

*Generously sponsored by: CSA*

**4:40 pm – 6:00 pm**

---

**Section Meetings**

Architecture Section Meeting

(Conference Centre | Van Horne Blrm A)

*Moderator:* Karen DeWitt

Cataloging Section Meeting

(Conference Centre | D.C. Coleman)

*Moderator:* Zimra Panitz

*Vice-Moderator:* Jonathan Lill

Reference and Information Services Section (RISS) Meeting

(Conference Centre | Baron Shaughnessy)

*Moderator:* Anne Haas

*Vice-Moderator:* Laura Graveline

**5:00 pm – 6:00 pm**

---

**Tour 2-E**

The Banff Springs Hotel Tour

(Tour starts in Rundle Hall, Mezzanine One at 5:00 pm)

**6:00 pm – 8:00 pm**

---

**Meetings**

Committee on Institutional Cooperation Meeting

(Conference Centre | Sir Edward Beatty)

*Chair:* Lyn Korenic

International Relations Committee (IRC) Meeting

(Banff Springs Hotel | Oak Room)

*Chair:* Hugh Wilburn

**6:00 pm – 7:30 pm**

---

**Committee Meetings**

Membership Committee Meeting

(Banff Springs Hotel | Champlain Room)

*Chair:* Janine Henri

Nominating Committee Meeting

(Banff Springs Hotel | Lacombe Room)

*Chair:* Deborah Kempe

Professional Development Committee Meeting

(Banff Springs Hotel | Angus Room)

*Chair:* V. Heidi Hass

# SATURDAY, MAY 6 / SUNDAY, MAY 7

## Public Policy Committee Meeting

(Banff Springs Hotel | Strathcona Room)

*Co-Chairs:* Timothy Shipe and Cara List

## Standards Committee Meeting

(Banff Springs Hotel | McKenzie Room)

*Chair:* Don Juedes

## Nominating Committee Meeting

(Banff Springs Hotel | Lacombe Room)

*Contact:* Deborah Kempe

### **6:00 pm – 7:00 pm**

---

## Committee Meetings

### Awards Committee Meeting

(Banff Springs Hotel | Empress Room)

*Chair:* Daniel Starr

### Diversity Committee Meeting

(Banff Springs Hotel | Palliser Room)

*Co-Chairs:* Laurel Bliss and Vanessa Kam

### **6:10 pm – 7:00 pm**

---

## Meetings

### Cataloging Advisory Committee Meeting

(Conference Centre | D.C. Coleman)

*Chair:* Kay Teel

### Development Committee Meeting

(Conference Centre | Van Horne Blrm A)

*Co-Chairs:* Kim Collins and Allen Townsend

### Student Affairs Discussion Group Meeting

(Conference Centre | Baron Shaughnessy)

*Moderator:* Sarah Falls

### **7:00 pm – 10:00 pm?**

---

## Student Pub Social

Not limited to students.

(Meet in Conference Centre Foyer outside Baron Shaughnessy)

### **7:00 pm – 8:00 pm**

---

## A Tasting of Fine Canadian Wine

(Banff Springs Hotel | Ivor Petrak Room)

## Committee Meeting

### Research Awards Committee Meeting

(Banff Springs Hotel | Empress Room)

*Chair:* Terri Wilson

*Vice-Chair:* John Hagood

### **7:10 pm – 8:00 pm**

---

## Committee Meetings

### Distinguished Service Award Committee Meeting

(Banff Springs Hotel | Palliser Room)

*Chair:* Barbara Polowy

### Publications Committee Meeting

(Conference Centre | D.C. Coleman)

*Contact:* Roger Lawson

### **8:30 pm – 10:30 pm**

---

## Society Circle Reception

By invitation only.

### **9:00 pm – 12:00 am**

---

## NFB Film Night

(Conference Centre | Theatre)

## *Sunday, May 7*

### **6:30 am – 8:00 am**

---

## Tour 5-A

### Early Morning Nature Walk

(Tour departs from Banff Springs Hotel Main Lobby at 6:30 am)

### **7:00 am – 8:30 am**

---

## ARTstor Users Group Meeting

(Conference Centre | Shaughnessy / Beatty)

*Moderator:*

Shalimar Fojas, ARTstor



**7:00 am – 8:00 am**

**Yoga in Banff**

(Banff Springs Hotel | Conservatory)

**8:00 am – 6:30 pm**

**Registration / Hospitality Desks Open**

(Conference Centre | Van Horne Foyer)

**8:00 am – 9:00 am**

**Committee Meeting**

Finance Committee Meeting

(Banff Springs Hotel | Norquay Room)

*Chair:* Lynda White

**9:00 am – 2:30 pm**

**Exhibit Hall, Internet Café, and Silent**

**Auction Viewing / Bidding Hours**

(Conference Centre | Van Horne B & C)

*Internet Café generously sponsored by: Useful*

**9:00 am – 11:00 am**

**Workshop 10**

The Big Step Forward: Building the Perfect  
Resumé for Art/Visual Resources Library  
Professionals

(Conference Centre | D.C. Coleman)

*Panel Participants:*

Keith Scharnau, Coordinator, Education and  
Resource Services, Career services, University  
of Calgary

B.J. Kish Irvine, Ph.D., Director, Fine Arts  
Library, Indiana University

*Resumé Reviewers:*

Nedda Ahmed, Fine Arts Liaison/Reference  
Librarian, Doane Library, Denison University

Richard McElroy, Acquisitions and Serials  
Librarian, Massachusetts College of Art  
Library

Ann Whiteside, Head, Rotch Library of  
Architecture & Planning, MIT

Aprille Nace, Public Services Team Leader,  
Rakow Research Library, Corning Museum  
of Glass

Sonja Straum, Director, Herron Art Library,  
Indiana University-Purdue University,  
Indianapolis

B.J. Kish Irvine, Director, Fine Arts Library,  
Indiana University

Amy Lucker, Head of Technical Services and  
Slides & Digital Imaging, Fine Arts Library of  
Harvard College Library, Harvard University

*Moderator:* Sarah Falls, University of  
Richmond

**9:00 am – 10:30 am**

**Session 7**

Art Books, Book Arts, Books in Art: The  
Canadian Chronicle

(Conference Centre | Van Horne Blrm A)

The History of the Book in Canada/Histoire  
du livre et de l'imprime au Canada is a  
landmark collaboration that brought together  
historians, literary scholars and librarians to  
produce an interdisciplinary history of the  
book in Canada from the beginnings to 1980.  
This five-year project will publish three volu-  
mes in English and three in French. Databases  
supporting scholarship in book history are  
also being compiled. This important research  
has included studies of the book arts and  
histories of art publishing. The editors have  
also taken an interest in representations of  
readers in Canadian art. ARLIS/NA members  
Jo Nordley Beglo and Randall Speller are  
contributors to this work and Carole Gerson  
is the co-editor of volume three.

*Speakers:*

Jo Nordley Beglo, Bibliographer, National  
Gallery of Canada, *The Encouragement of  
Interest in Art: National Gallery of Canada  
Publications*

Randall Speller, Librarian, Art Gallery of  
Ontario, *Canadian Artists and Books:  
1920-1970*

## SUNDAY, MAY 7

Carole Gerson, Professor, Simon Fraser University, *Books and Reading in Canadian Art*

*Moderator:*

Cheryl Siegel, Vancouver Art Gallery

### Session 8

Visual Resources, Educational Technologies, & Teaching: A Collaborative Faculty Support Model

(Conference Centre | Shaughnessy / Beatty)

Supporting teaching and learning in art, art history, and related fields continues to grow in complexity. In recent years, librarians and visual resources professionals have worked closely to provide faculty support in a unified fashion to incorporate digital image technologies into the classroom. A similar campus partnership between faculty, instructional designers, and technology specialists focuses on educational technology and pedagogy. Expanding a campus support network to include instructional designers and technologists with librarians and visual resources curators can significantly advance innovative teaching in art history and related fields. The successful Johns Hopkins University's collaborative faculty support model will be presented. This session will describe the process and the co-presenters will highlight the tangible outcomes of the approach.

*Speakers:*

Mike Reese, Assistant Director, Center for Educational Resources (CER), Johns Hopkins University, *Pedagogy Upgrade: Helping Faculty Explore Instructional Technologies*

Ann Woodward, Curator of the Visual Resources Collection (VRC), Johns Hopkins University, *Making It Work: Materials, Services, & Sustainability*

Virginia (Macie) Hall, Senior Information Technology Specialist in the Humanities, Johns Hopkins University, *Humanizing Technology: Connecting Art Historians to Educational Resources*

Donald Juedes, Librarian for Art History, Classics, & Philosophy, Johns Hopkins University, *Bringing It Together: Team-Based Faculty Support*

*Moderator:*

Donald Juedes, Johns Hopkins University

*Generously sponsored by:*

*Micromedia ProQuest*

---

**10:30 am – 12:00 pm**

### Session 9

Online Access to Exhibition Histories: The Role of the Art Museum Library

(Conference Centre | Theatre)

The exhibition history of individual art objects and the history of exhibitions are rich sources of information on the objects themselves and on shifts in taste and collecting emphasis within individual museums and within the art world. Art librarians have been providing access to published exhibition documentation such as exhibition catalogs, exhibition publications, and brochures. But much more valuable information, in the form of checklists, labels, press clippings, installation photographs, etc., remains hidden within registrarial offices, curatorial files, and museum archives. In this session, librarians at three different museums will describe how they are making information on their institutions' exhibition histories accessible online.

*Speakers:*

Cyndie Campbell, Head Archives, Documentation, Visual Resources, National Gallery of Canada, *The Show Must Go Online: Documenting Exhibitions at the National Gallery of Canada*

Deirdre E. Lawrence, Principal Librarian/Coordinator of Research Services, Brooklyn Museum, *From Card Catalogs to Computers: The Transformation of Access to Exhibition and Object Documentation*

Elizabeth O'Keefe, Director of Collection Information Systems, Pierpont Morgan

Library, *One-Stop Shopping for Exhibition Documentation Through the Pierpont Morgan Library's OPAC*

*Moderator:*

Maria Oldal, Pierpont Morgan Library

*Generously sponsored by: Duncan Systems*

---

**10:30 am – 11:00 am**

**Coffee/Tea Break with Exhibitors**

(Conference Centre | Van Horne B & C)

*Generously sponsored by: Ars Libri Ltd.*

**Poster Session 3**

Making the Academic Curriculum Information Literate: LS One at the Ontario College of Art and Design

(Conference Centre | Van Horne B & C)

*Presenter:*

Daniel Payne, Head, Reference, Information & Access Services, Ontario College of Art & Design

**Poster Session 4**

New Home, New Challenges

(Conference Centre | Van Horne B & C)

*Presenter:*

Barbara Opar, Architecture Librarian, Syracuse University School of Architecture

---

**11:00 am – 12:00 pm**

**Session 10**

Art in the Wilderness: The Group of Seven, Photographer Mary Schäffer and the British Literati in the Canadian Rockies

(Conference Centre | Van Horne Blrm A)

As western Canada was slowly populated, its splendid scenery was captured with paint, print, photograph, and pen. The Canadian Pacific Railway afforded relatively easy travel to remote and magnificent landscapes, and a developing sense of nationalism took hold. The Group of Seven challenged established artistic styles and infused their canvases with vivid color and symbolic meaning. The

landscape also summoned members of the British Literati, including Marion Cran, Rudyard Kipling, and Sir Arthur Conan Doyle. Tales of their encounters with Mary Schäffer who traveled along old Indian trails on horseback are recounted in their writings. The speakers will discuss the Group of Seven and their contemporaries, and the intersection of photography, literature, and celebrity in the Rocky Mountains.

*Speakers:*

Lisa Christensen, Curator of Art, The Whyte Museum, Banff, Alberta, *Exploring the Art of the Canadian Rockies*

Dr. Colleen Skidmore, Associate Professor of Art and Design, University of Alberta, *Women, Wilderness, and Photography: Mary Schäffer in the Rocky Mountains*

*Moderator:*

Kathy Woodrell, Library of Congress

**Session 11**

Ask ARLIS: Reaching Out: Chapter Links to Local Library Schools

(Conference Centre | D.C. Coleman)

Good relations between your local ARLIS/NA chapter and neighboring library schools can be a win-win situation: for the chapter which attracts new blood; for individual members whose libraries benefit from inter-ship; and for students who gain valuable experience and contacts – not to mention the profession at large, which opens up to new and diverse professionals. Yet all too often these links just don't happen. Our panel will address questions of how to establish and nurture chapter relations with local library schools by means of attendance at career events, arranging practicums and internships, mentoring, recruitment strategies, setting up speakers' bureaux, etc.

*Panelists:*

Sarah Falls, Moderator, ARLIS/NA Student Affairs Discussion Group

## SUNDAY, MAY 7

Janine Henri, Chair, ARLIS/NA Membership Committee

Jennifer Parker, Art & Architecture Librarian, University of Colorado, Boulder

Cheryl Siegel, Secretary, ARLIS/Canada

Lucie Wall Stylianopoulos, Chair, ARLIS/NA DC-Maryland-Virginia Chapter

Dr. Anna Altmann, School of Library and Information Sciences, University of Alberta

### *Moderators:*

Jonathan Franklin, National Gallery of Canada, and Peggy Keeran, University of Denver

*Generously sponsored by: University of British Columbia SLAIS and University of Alberta SLIS*

### **12:00 pm – 1:30 pm**

---

#### **Exhibit Hall Closing / Not-So-Silent Auction Event and Ice Cream Social**

(Conference Centre | Van Horne, B & C)

Lunch cart to purchase salads and sandwiches will be available in Conference Centre foyer. Ice cream bars will be provided.

Your final opportunity to meet with the Exhibitors and to bid in the ARLIS/NA Fundraiser Silent Auction before the Not-So-Silent Auction to be held 12:30 pm – 1:20 pm.

### **1:30 pm – 3:30 pm**

---

#### **Workshop 11**

A Classical Education: Collection Building in Classics and Archaeology

(Conference Centre | D.C. Coleman)

### *Speakers:*

David Sullivan, Classics Librarian, University of California, Berkeley, *The Good, the Bad, and the Ugly: Acquiring Italian Library Materials in the Classics*

Lucie Wall Stylianopoulos, Librarian for Art, Archaeology, and Drama, University of Virginia, *Rembetika and Ruins: Searching the Backstreets of Athens for Books*

Gerald Heverley, Classics Librarian, New York University, *How to Build a Retrospective Collection in Classics: the NYU Project*

Dena Schoen, Director of Sales, North America, Harrassowitz

### *Moderator:*

Lucie Wall Stylianopoulos, University of Virginia

### **1:30 pm – 3:00 pm**

---

#### **Session 12**

Digital Reconstruction of Illuminated Manuscripts: The Ege Project

(Conference Centre | Van Horne Blrm A)

In June 2005, a group of medievalists, scholars and librarians gathered at the University of Saskatchewan for a symposium entitled *Remaking the Book: Digitally Reconstructing the Otto Ege Manuscript Portfolios*. As a result, a project to digitally reconstruct some of the books from which the pages were originally cut, including the valuable “Beauvais Missal” of northern France from the late 13th century, was launched. This ARLIS/NA session will begin with an overview of manuscript production and circulation, and explain the process by which Otto Ege collected and disassembled original manuscripts to create the manuscript boxes, which were distributed to university and public library collections in the United States and Canada in the 1940s and 1950s. The session will include a discussion of preservation and access issues, and the proposed reconstruction project.

### *Speakers:*

Yin Liu, Assistant Professor of English, University of Saskatchewan, *A Human Technology: Leaves from the Ege Collection*

Fred Porcheddu, Associate Professor of English, Denison University, *Otto Ege: Teacher, Collector, and Biblioclast*

Janet Catterall, Head, Indigenous Studies Portal, University of Saskatchewan Library,

*Scattered Leaves: Preserving Our Piece of the Otto Ege Puzzle*

*Moderator:*

Jill Patrick, Ontario College of Art & Design

### Session 13

New Voices in the Profession: Student Papers on Art & Visual Resources Librarianship

(Conference Centre | Shaughnessy / Beatty)

New Voices is a showcase for exceptional academic work by MLS/IS students. Academic papers will include user studies and other information gathering techniques used by library professionals to form work processes, but specifically in art and visual resources librarianship. These new topics will introduce ARLIS/NA membership to the scholarship emerging from our MLS programs and topics of interest of possible new hires. Topics may even have an international interest for students who are reaching out beyond their programs and North American library practice. For the panel participants, it provides professional development opportunities not easily obtained in library school—presenting at a national level professional conference.

*Speakers:*

Sara Carter, Indiana University, *Powerpoint: A Digital Image Usage Study*

Megan Macken, Indiana University, Winner, Gerd Muesham Award, *The Art Library As Place: The Role of Current Space Planning Paradigms within the Academic Art and Architecture Library*

Kristin Meyer, University of Minnesota, *Artifact: Surveying U.K. Users to Analyze Its Use*

Heather Saunders, University of Toronto, *Internet Art and the Archivist's Conflicting Roles*

Felicity Tayler, Artexte centre d'information en art contemporain, *Perpetuating the "Eternal Networ.": Bibliographies of Five Canadian Artist-run Centres*

*Moderator:*

Sarah Falls, University of Richmond

**3:00 pm – 4:30 pm**

---

### Division Meetings

Art and Design School Library Division Meeting

(Banff Springs Hotel | Norquay Room)

*Moderators:*

Rachel Resnick and Tony White

*Vice-Moderators:*

Kathy Ritter and Annette Haines

**3:10 pm – 4:30 pm**

---

### Meetings

Academic Library Division Meeting

(Conference Centre | Van Horne Blrm A)

*Moderator:* Ann Shincovich

*Vice-Moderator:* Lucie Wall Stylianopoulos

Museum Library Division Meeting (undo bold)

(Conference Centre | Baron Shaughnessy)

*Moderator:* Naomi Niles

*Vice-Moderator:* Suzannah Massen

Visual Resources Division (VRD) Meeting

(Conference Centre | Sir Edward Beatty)

*Moderator:* Jenni Rodda

*Vice-Moderator:* Maryly Snow

**3:40 pm – 4:30 pm**

---

### Meeting

Public Library Round Table Meeting

(Conference Centre | D.C. Coleman)

*Moderator:* Alyssa Resnick

**4:30 pm – 6:00 pm**

---

### Meetings

ARLIS/NA-VRA Summer Educational Institute Joint Advisory Committee

(Banff Springs Hotel | McKenzie Room)

*Chair:* Trudy Jacoby

# SUNDAY, MAY 7 / MONDAY, MAY 8

Decorative Arts Round Table (DART) Meeting  
(Banff Springs Hotel | Champlain Room)

*Moderators:*

Kathy Woodrell and Linda Seckelson

Solo Librarians Discussion Group Meeting  
(Banff Springs Hotel | Palliser Room)

*Moderator:* Eumie Imm-Stroukoff

**4:40 pm – 6:00 pm**

---

## Meetings

Cataloging Problems Discussion Group Meeting  
(Conference Centre | D.C. Coleman)

*Moderator:* Sherman Clarke

Collection Development Discussion Group Meeting  
(Conference Centre | Baron Shaughnessy)

*Moderator:* Timothy Shipe

Photography Librarians Discussion Group Meeting  
(Conference Centre | Norquay)

*Moderators:* Tony White and Barbara Rockenbach

Teaching Librarians Discussion Group Meeting  
(Conference Centre | Sir Edward Beatty)

*Moderators:* Rijn Templeton

Artists Files Working Group Meeting  
(Banff Springs Hotel | Van Horne Blrm A)

*Coordinator:* Jon Evans

**5:00 pm – 6:00 pm**

---

## Tour 2-F

The Banff Springs Hotel Tour

(Tour starts in Rundle Hall, Mezzanine One at 5:00 pm)

**6:30 pm – 8:30 pm**

---

## Convocation Ceremony

(Banff Springs Hotel | Cascade Ballroom)

**8:30 pm – 11:00 pm**

---

## Convocation Reception

(Banff Springs Hotel | Riverview Lounge / Conservatory)

**Monday, May 8**

**6:30 am – 8:00 am**

---

## Tour 5-B

Early Morning Nature Walk

(Tour departs from Banff Springs Hotel Main Lobby at 6:30 am)

**7:00 am – 8:00 am**

---

## Yoga in Banff

(Banff Springs Hotel | Conservatory)

**7:30 am – 9:00 am**

---

## Chapter Meetings

ARLIS/Northern California Chapter Meeting  
(Banff Springs Hotel | Norquay Room)

*Chair:* John Stucky

*Vice-Chair/Chair-Elect:* Barbara Rominski

ARLIS/Southern California Chapter Meeting  
(Banff Springs Hotel | Oak Room)

*Chair:* Nancy Norris

*Vice-Chair/Chair-Elect:* Trish Rose

**7:30 am – 8:30 am**

---

## Chapter Meetings

ARLIS/Canada Chapter Meeting  
(Banff Springs Hotel | Van Horne Blrm A)

*Chair:* Jonathan Franklin

*Incoming Chair:* Marilyn Nasserden

ARLIS/Western New York Chapter Meeting  
(Conference Centre | Ivor Petrak Room)

*President:* Martha Walker

*Vice-President/President-Elect:* Dorothy Tao

ARLIS/Southeast Chapter Meeting  
(Conference Centre | Shaughnessy/Beatty)

*President:* Tom Caswell

*Vice-President/President-Elect:* Kathleen List

**8:00 am – 5:30 pm**

---

**Registration / Hospitality Desks Open**  
(Conference Centre | Van Horne Foyer)

**8:00 am – 9:00 am**

---

**Chapter Meetings**

ARLIS/Midstates Chapter Meeting  
(Banff Springs Hotel | Angus Room)

*Chair:* Amy Trendler

*Vice-Chair/Chair-Elect:* Rijn Templeton

ARLIS/Mountain West Chapter Meeting  
(Check message board at Registration Desk for location)

*Chair:* Nancy Pistorius

*Vice-Chair/Chair-Elect:* Marilyn Russell

**8:30 am – 9:00 am**

---

**Chapter Meeting**

ARLIS/Northwest Chapter  
(Banff Springs Hotel | Van Horne Blrm A)

*Chair:* Jodee Fenton

*Vice-Chair/Chair-Elect:* Jane Devine Mejia

**9:00 am – 11:00 am**

---

**Workshop 12-A**

Art in Books: How to Identify Original Works on Paper  
(Conference Centre | D.C. Coleman)

*Workshop Leader:*

Julie L. Mellby, *Graphic Arts Librarian, Firestone Library, Princeton University*

*Generously sponsored by: Christie's*

**9:00 am – 10:30 am**

---

**Session 14**

Shared Cataloging for Images: Fantasy or Reality?

(Conference Centre | Van Horne Blrm A)

Using the Union Catalog for Art Images (UCAI) as its foundation, this session will explore the usefulness of copy cataloging for images in visual resource collections. A research and development project funded by the Mellon Foundation, UCAI has been looking for ways to improve cataloging efficiencies, to support record sharing and to promote the use of standards in visual resource collections. One speaker will talk about copy cataloging in general. The second speaker will talk specifically about UCAI. The third speaker will come from the perspective of a visual resources curator and will discuss the ways in which a copy cataloging utility could benefit her department.

*Speakers:*

Trudy Jacoby, *Director, Visual Resources Collection, Princeton University, Shared Cataloging for Image Collections: I Want It Now!*

Ardys Kozbial, *Metadata Librarian, University of California, San Diego, The Potential for UCAI in the VR Community*  
Linda Barnhart, *Head, Metadata Services Department, University of California, San Diego, Shared Cataloging: Where Do We Go From Here?*

*Moderator:*

Trish Rose, *University of California, San Diego*

**Session 15**

What Art and Architecture Isn't: The Decorative Arts

(Conference Centre | Shaughnessy/Beatty)

The session will investigate decorative arts collection development and resources as

## MONDAY, MAY 8

well as trying to address how decorative arts research differs from fine arts and architecture research. The Researchers and Reference section will address the needs of decorative arts researchers and how they may differ from those of art historians or artists. The Key Resources section will look at specific print and electronic resources, archives and repositories, international resources, and how to locate specialty ephemeral files. The Collection Development section, will provide an overview of collecting in the decorative arts, including American and international vendors specializing in the decorative arts, decorative arts focused approval plan options, key periodicals in this area and where to find book reviews on decorative arts materials. Presented in the context of case studies for three types of library collections - small curatorial, large museum and graduate school.

### *Speakers:*

Linda Seckelson, Head of Reader Services, Metropolitan Museum of Art, *Researchers & Reference Work*

Kathy Woodrell, Reference and Collection Development Specialist for the Decorative Arts, Library of Congress, *Key Resources*

Kristen Regina, Librarian, Hillwood Museum, *Collection Development – part 1*

Christina Peter, Cataloguing Associate for Acquisitions, Frick Art Reference Library, *Collection Development – part 2*

### *Moderator:*

Greta Earnest, Fashion Institute of Technology  
*Generously sponsored by: Michael R. Weintraub*

### **9:00 am – 10:00 am**

---

#### **Chapter Meeting**

ARLIS/Midstates Chapter Meeting for Planning 2009 Annual Conference (Indianapolis)

(Banff Springs Hotel | Angus Room)

*Vice-Chair/Chair-Elect:* Rijn Templeton

### **10:00 am – 11:00 am**

---

#### **Diversity Forum**

(Banff Springs Hotel | Norquay Room)

*Moderator:* Vanessa Kam

### **10:30 am – 11:00 am**

---

#### **Poster Session 5**

Rhizome.org

(Conference Centre | Van Horne Foyer)

*Presenter:*

Lauren Cornell, Executive Director, Rhizome

#### **Poster Session 6**

Visual Resources Management: Determining Professional Competencies and Guidelines for Graduate Education

(Conference Centre | Van Horne Foyer)

*Presenters:*

Hemalata Iyer, Associate Professor, University at Albany, State University of New York

Jeanne M. Keefe, Visual Resources Librarian, Rensselaer Polytechnic Institute

### **11:00 am – 12:30 pm**

---

#### **Session 17**

Hot Topics: Going Green

(Conference Centre | Shaughnessy / Beatty)

Sustainability and building green are not simply buzzwords signifying a new fad springing from an environmentalist's notebook. Indisputable evidence of global warming, finite reserves of fossil fuels, and buildup of toxins and waste in our land, water, and air compel us to reconsider the impact of the built environment on our world. Instead of taxing the resources of the earth, sustainable design practices allow buildings and cities to be a partner with the environment. Buildings breathe and waste products serve as fuels or are purified for reuse. Three University of Calgary Faculty of Environmental Design professors will inform us about international advances and trends relating to Green Design



in architecture, industrial design, and urban planning. In addition, our very own Susan Koskinen will offer insight to how we as librarians can keep up with these new directions.

*Speakers:*

Dr. Jim Love, Professor of Architecture and PhD Program Director, Faculty of Environmental Design, University of Calgary

Dr. Stuart Walker, Associate Dean and Professor of Industrial Design, Faculty of Environmental Design, University of Calgary

Prof. Brian Sinclair, Dean, Faculty of Environmental Design, University of Calgary

Susan Koskinen, Architecture Design, Practice & Building Science Librarian, Environmental Design Library, University of California, Berkeley

*Moderator:*

Rebecca Price, *University of Michigan*

**Session 18**

Words on the Street: Graphic Novel and Comics Collections in Academic and Art and Design School Libraries

(Conference Centre | Van Horne Blrm A)

Graphic novels and comics collections have been popular in public libraries for years. Greater numbers of universities and art and design schools are offering courses and majors in sequential art. Keeping current with key authors and titles and recognizing what will be pertinent to an academic and visual arts audience can be difficult to navigate. Words on the Street presents a discussion about the importance and aesthetics of graphic novel, comic book, and related products of contemporary culture collections, including collection development, and integration into bibliographic instruction. The panel includes a curator of these books – to offer an understanding of the use of sequential art to further artists’ messages or artistic concerns.

*Speakers:*

Amanda Gluibizzi, *Head Librarian, The Art Institute of Boston at Lesley University, The Aesthetics and Academics of Graphic Novels*

Annette Haines, *Art & Design Field Librarian, University of Michigan, Strategies for Developing a Graphic Novel/Comic Book Collection*

Sylvie Gilbert, *Senior Curator, Walter Phillips Gallery and The Banff International Curatorial Institute, The Banff Centre*

*Moderator:*

Tony White, *Pratt Institute*

**12:40 pm – 1:30 pm**

---

**Grove Art Online Users Group Meeting**

(Conference Centre | Shaughnessy / Beatty)

*Moderator:*

Christine Kuan, *Editor, Grove Art Online/The Dictionary of Art*

*Generously sponsored by:*

*Oxford University Press*

**1:30 pm – 3:30 pm**

---

**Membership Meeting**

(Conference Centre | Van Horne Blrm A)

**3:30 pm – 5:30 pm**

---

**Workshop 12-B**

Art in Books: How to Identify Original Works on Paper

(Conference Centre | D.C. Coleman)

*Workshop Leader:*

Julie L. Mellby, *Graphic Arts Librarian, Firestone Library, Princeton University*

**Conference Planning Advisory Committee**

**(CPAC) Meeting**

(Banff Springs Hotel | Norquay Room)

## TUESDAY, MAY 9

### 3:30 pm – 4:30 pm

---

#### Meeting

Book Arts Round Table Meeting

(Conference Centre | Oak)

*Moderator:* Jonathan Lill

*Vice-Moderator:* Nancy Pistorius

New Art Round Table

(Banff Springs Hotel | Angus Room)

*Moderator:* Nicole Gjertsen

SCIPPIO Users Group Meeting

(Conference Centre | Ivor Petrak Room)

*Moderators:*

Deborah Kempe and Günter Waibel, *RLG*

Serials Round Table Meeting

(Check message board at Registration Desk for location)

*Moderator:* Cara List

*Vice-Moderator:* Emily Rafferty

Space Planners Round Table (SPRT) Meeting

(Conference Centre | Sir Edward Beatty)

*Moderator:* Natalia Lonchyna

Women and Art Round Table (WomART) Meeting

(Banff Springs Hotel | Strathcona Room)

*Moderator:* Sara MacDonald

*Vice-Moderator:* Melanie Emerson

### 3:30 pm – 4:20 pm

---

New Art Round Table

(Banff Springs Hotel | Angus Room)

*Moderator:* Nicole Gjertsen

### 4:00 pm – 6:30 pm

---

#### Tour 7

The Banff Centre Tour

(Tour departs from Banff Springs Hotel's Motor Coach Entrance at 4:00 pm.)

### 4:00 pm – 6:00 pm

---

#### Tour 6 Banff Green Initiatives Tour

(Tour departs from Banff Springs Hotel's Motor Coach Entrance at 4:00 pm)

### 4:30 pm – 5:30 pm

---

#### Meeting

Gay and Lesbian Interests Round Table (GLIRT) Meeting

(Banff Springs Hotel | Angus Room)

*Moderator:* Ray Anne Lockard

### 6:30 pm – 8:30 pm

---

#### Comic Craze Exhibition / Reception

(Banff Centre | Walter Phillips Gallery of Contemporary Art)

*Generously sponsored by: Walter Phillips Gallery of Contemporary Art, The Banff Centre*

## Tuesday, May 9

### 7:30 am – 5:00 pm

---

#### Tour 8

Icefields Parkway to Columbia Icefields Bus Tour  
(Tour departs from Banff Springs Hotel's Motor Coach Entrance at 7:30 am)

### 7:30 am – 10:00 am

---

#### Registration / Hospitality Desks Open

(Conference Centre | Van Horne Foyer)

### 8:00 am – 5:00 pm

---

#### Tour 12

Calgary Heritage Buildings Walking Tour  
(Tour departs from Banff Springs Hotel's Motor Coach Entrance at 8:00 am. Calgary participants may join the tour at 9:30 am at the Lougheed House)

**Tour 13**

Calgary Homes Architecture Tour

(Tour departs from Banff Springs Hotel's Motor Coach Entrance at 8:00 am. Calgary participants may join the tour at 9:30 am in the foyer of the Glenbow Museum)

**Tour 14**

Downtown Calgary, Galleries & Art Walk

(Tour departs from Banff Springs Hotel's Motor Coach Entrance at 8:00 am. Calgary participants may join the tour at 9:30 am in the foyer of the Glenbow Museum.)

**Tour 15**

Glenbow Museum Tour

(Tour departs from Banff Springs Hotel's Motor Coach Entrance at 8:00 am. Calgary participants may join the tour at 9:30 am in the foyer of the Glenbow Museum.)

**Tour 16**

University of Calgary Information Resources Tour

(Tour departs from Banff Springs Hotel's Motor Coach Entrance at 8:00 am. Calgary participants may join the tour at 9:30 am in the MacKimmie Library Link, University of Calgary.)

**Tour 17**

Day Trip to Calgary: Self-Guided Sight Seeing

(Tour departs from Banff Springs Hotel's Motor Coach Entrance at 8:00 am. Participants will be dropped off at the Glenbow Museum.)

**9:00 am – 5:00 pm**

---

**ARLIS/NA Executive Board Meeting**

(Banff Springs Hotel | Norquay Room)

Open to membership on a seating-available basis.

**9:00 am – 3:00 pm**

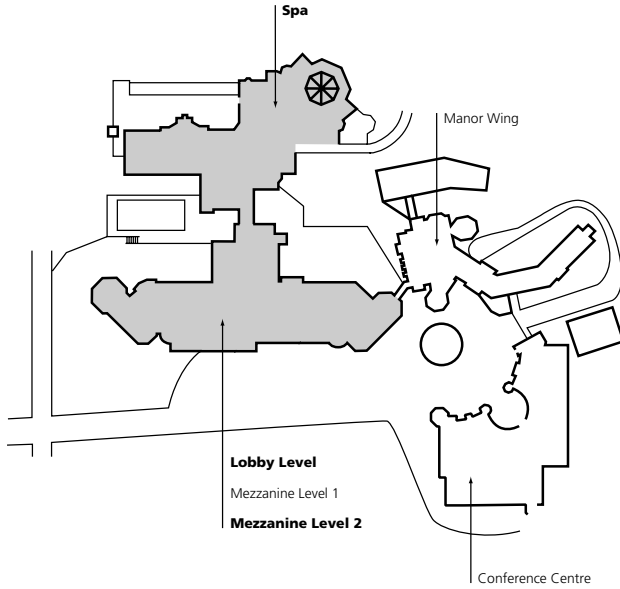
---

**Tour 10**

Banff Mountain Park Hike: Castle Mountain Lookout

(Tour departs from Banff Springs Hotel's Motor Coach Entrance at 9:00 am. In the event of weather not suitable for hiking, a slide presentation will take place instead – in the Banff Springs Hotel Angus Room at 9:00 am.)

# BANFF SPRINGS HOTEL

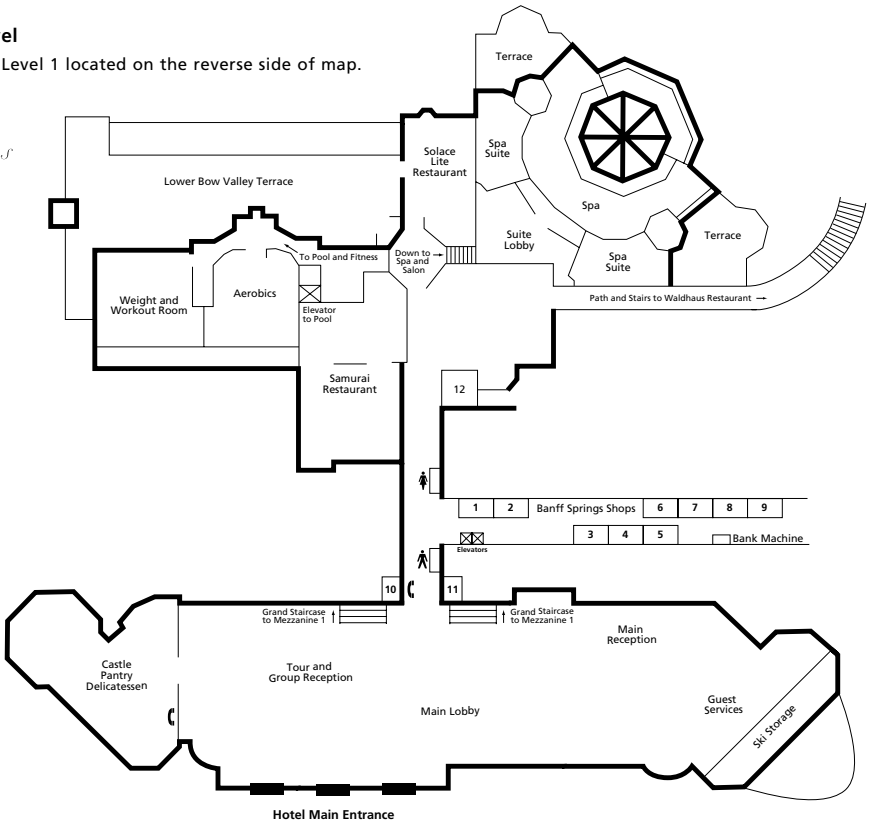


## Banff Springs Shops

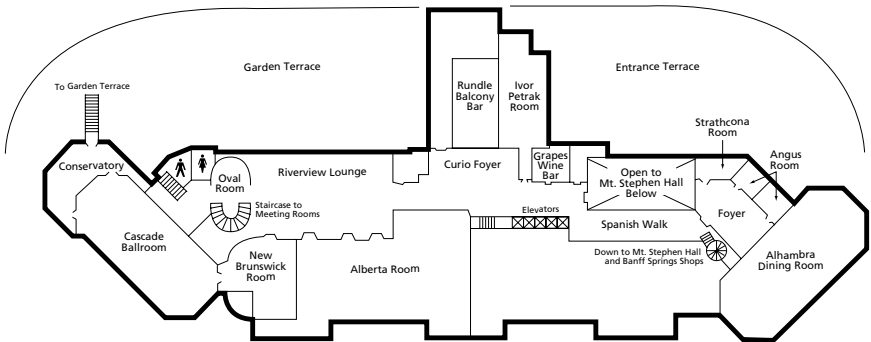
1. The Canadian Pacific Store
2. Moments Lingerie
3. New West
4. Stanley Thompson Golf Shop
5. Banff Outdoor
6. Wild About Nature
7. The Moose & the Bear
8. Courtyard Classics
9. Gourmet Kitchen Store
10. Baccarat
11. Castle Jewels
12. The Fairmont Banff Springs Store
13. Old World Charm  
(located on Mezzanine 1)
14. Banff Springs Jewelry  
(located on Mezzanine 1)

**Lobby Level**

Mezzanine Level 1 located on the reverse side of map.



**Mezzanine Level 2**



Nina M. Davies, *Ancient Egyptian Paintings*, plate volumes I & II, Chicago, 1936.  
Sold on March 9, 2006 for \$1,955.

*Frequent auctions of:*

## ART & ARCHITECTURE BOOKS

Inquiries: CHRISTINE VON DER LINN, 212 254 4710, EXT. 20  
e-mail: [cvonderlinn@swannalleries.com](mailto:cvonderlinn@swannalleries.com)

NOW ACCEPTING CONSIGNMENTS TO FORTHCOMING AUCTIONS

7 am	
8 am	
9 am	Pre-Conference Workshop
10 am	
11 am	
12 pm	
1 pm	
2 pm	
3 pm	
4 pm	
5 pm	
6 pm	
7 pm	
8 pm	
9 pm	
10 pm	
11 pm	
12 pm	

Registration Desk Open

Copyright in the Canadian Context

6 am											
7 am											
8 am	Registration & Registration Meeting										
9 am	Registration & Registration Meeting ARLIS/NA Executive Board Meeting FISITE Ateneas Exhibition Site Auction Welcome / Exhibits / Opening Reception	Volunteer Orientation				Workshop	Workshop	Workshop 3-A	Workshop 4-A	Workshop 5-A	Workshop 6-A
10 am						Tour 1-A Sulphur Point Gondola		Resources for Architecture Part A	Planning & Distribution	Collaboration Part A	
11 am											Workshop 7-A
12 pm											Collaboration Part B
1 pm			Workshop 1	Tour 2-A Hotel	Tour 3 Whyte Museum Banff Park			Workshop 3-B			Collaboration Part B
2 pm			Tour 2-B Hotel	Tour 3 Whyte Museum Banff Park			Workshop 4-B				Workshop 8
3 pm			Tour 2-C Hotel	Tour 4 Whyte Museum							Artists' Strategies for Change
4 pm			Tour 2-D Hotel	Tour 4 Whyte Museum							
5 pm											
6 pm											
7 pm											
8 pm											
9 pm											
10 pm											
11 pm											
12 am											









7 am	Registration Desk Open	ARLIS/NA Executive Board Meeting	Sulphur Mtn Gondola	Icefields Parkway to Columbia Icefields Bus Tour	Art of the Canadian Rockies Bus Tour	Banff Mountain Park Hike: Castle Mountain	Calgary Area Eco-Home Tour	Calgary Heritage Buildings Walking Tour	Calgary Homes Architecture Tour	Downtown Calgary, Galleries & Art Walk	Glenbow Museum Tour	University of Calgary Information Resources Tour	Day Trip to Calgary: Self-Guided Sightseeing
8 am													
9 am													
10 am													
11 am													
12 pm													
1 pm													
2 pm													
3 pm													
4 pm													
5 pm													
6 pm													
7 pm													
8 pm													
9 pm													
10 pm													
11 pm													
12 am													



## ART IN CINEMA

Documents Toward  
a History of the  
Film Society

SCOTT MACDONALD

A companion to *Cinema 16* (Temple), a documentary history of the first west coast film society, *Art in Cinema* provides cineastes, students, teachers, and scholars with extensive and fascinating documentation of one of the most important film societies in American history.

In the *Wide Angle Books* series,  
edited by Erik Barnouw,  
Ruth Bradley, Scott MacDonald,  
and Patricia Zimmermann

**\$59.50 ILLUSTRATED HARDCOVER**



## FEEDBACK

The Video Data Bank  
Catalog of Video Art  
and Artist Interviews

EDITED BY

KATE HORSFIELD AND  
LUCAS HILDERBRAND

The first printed catalog of the Video Data Bank's complete holdings, *Feedback* offers readers essays on the history of media arts, the Video Data Bank, video activism, experimental performance art, and the On Art and Artists Collection.

In the *Wide Angle Books* series,  
edited by Erik Barnouw,  
Ruth Bradley, Scott MacDonald,  
and Patricia Zimmermann

**\$60.00 ILLUSTRATED HARDCOVER**



## THE HOMOEROTIC PHOTOGRAPHY OF CARL VAN VECHTEN

Public Face,  
Private Thoughts

JAMES SMALLS

Amplly illustrated with 60 pioneering duotones, *The Homoerotic Photography of Carl Van Vechten* celebrates the sensual nude male form with both candor and reverence, offering a rare glimpse into the private domain of the master photographer and his handsome subjects.

**\$35.00 ILLUSTRATED HARDCOVER**  
AVAILABLE APRIL 2006

## THE SCRAPBOOK IN AMERICAN LIFE

EDITED BY SUSAN TUCKER,  
KATHERINE OTT AND  
PATRICIA P. BUCKLER

"...delightful... The 65 b&w images scattered throughout are a visual feast: a prostitute's business card, newspaper photos of FDR, late-19th-century advertising cards, paper dolls, postcards, awards, Singer sewing machine ads, Bible cards. Scholars and scrapbookers alike will enjoy these slices of social history."  
—*Publishers Weekly*

**\$25.95 ILLUSTRATED**  
AVAILABLE APRIL 2006

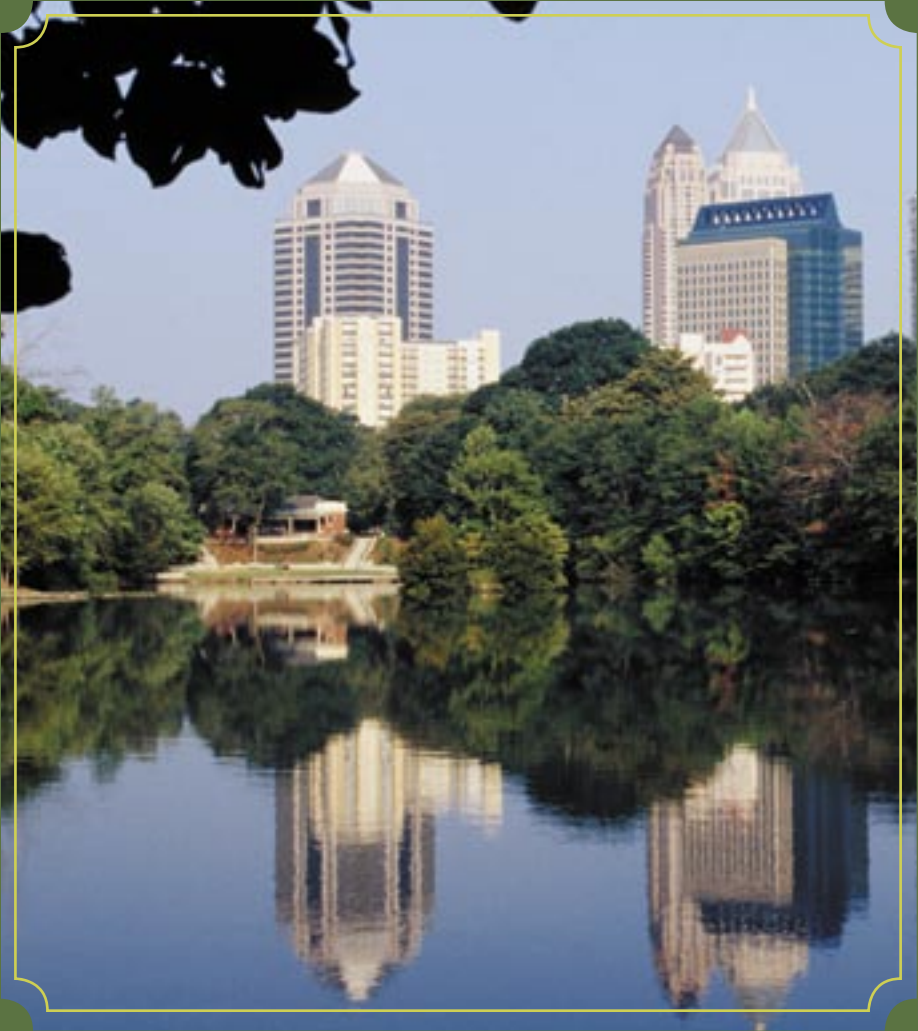


AVAILABLE IN BOOKSTORES  
[www.temple.edu/tempress](http://www.temple.edu/tempress)

 **TEMPLE**  
UNIVERSITY PRESS



enjoy vanff!



atlanta awaits you!


35<sup>TH</sup> ANNUAL ARLIS/NA CONFERENCE

"At the Crossroads: Inside, Outside, Past, Present, Future..."

APRIL 26<sup>TH</sup> – MAY 1<sup>ST</sup>, 2007

*Sheraton Midtown Atlanta at Colony Square  
Atlanta, Georgia*

# Is your museum software maximized or maxed out?



We have created an extraordinary new system - MIMSY XG - that expands and enhances all the functions of traditional collections management systems while integrating the tools and power to satisfy the dramatically changing needs of museums and their visitors and staffs.

Maintain your data concurrently in as many languages as you like so you're ready to meet the needs of your visitors whether they speak English, Spanish, Korean, French, or Greek. MIMSY XG even provides facilities to help you with translations.

Enrich your visitors' experiences by interlinking your objects with the fascinating details of the people, places, and events they relate to. Pre-built context files are available for use with MIMSY XG and you can easily tailor them to your needs.

Take a physical inventory of your collection by just pointing your finger at the objects. Or use RFID (radio frequency identification) tags to store key details on the object itself.

Enter and edit your database using your voice instead of your keyboard. Record treatment reports while keeping both hands free to do your work.

Transfer records to a handheld PC for courier trips, condition surveys, inventories, or research. Collect information and notes then send them back to your main database.

And because MIMSY XG was built from the ground up to maximize your use of new technologies, it provides an unprecedented return on investment to your museum.



**WILLOUGHBY**  
**WWW.WILLO.COM**

WILLOUGHBY ASSOCIATES, LIMITED • THE MUSEUM SOFTWARE PEOPLE  
PH: 847.332.1200 • FX: 847.332.1272 • EM: INFO@WILLO.COM