

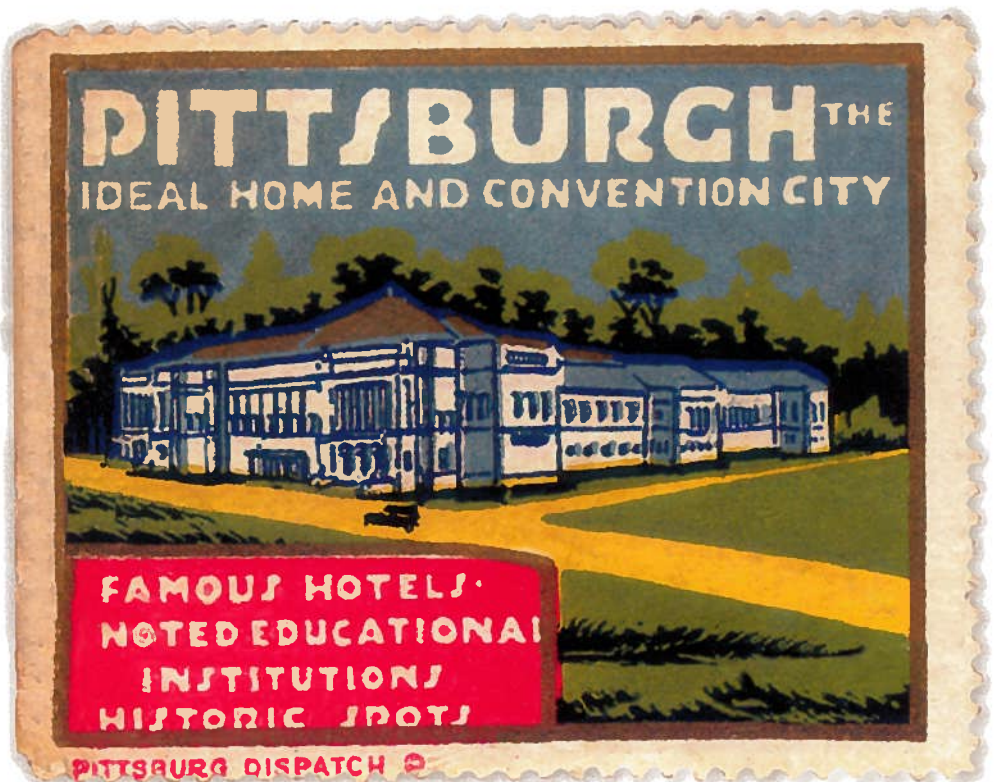
art libraries society of north america

28th annual conference

march 16-22, 2000

hilton pittsburgh

pittsburgh, pennsylvania



The Carnegie Institute c. 1920

Image courtesy of The Carnegie Public Library

Effective Access to Heritage Information

Research and Reference Online Resources, including:

- **CHIN's Intellectual Property Management Series**
Studies that guide museums in the management of digital intellectual property.
- **Museology Bibliography (BMUSE)**
References to over 29,000 journal articles, books and audiovisual materials.
- **The Bibliographic Database of the Conservation Information Network (BCIN)**
Authoritative information on conservation literature, contributed by six major international partners.
- **Artists in Canada**
A guide to information held by twenty-three libraries and art galleries on historical and contemporary Canadian artists.

Online Training in Image Digitization (launch date: April 2000)

This simple-to-use and affordable program takes users through all the steps of a digitization project. Also available — *Online Training in Collections Management Software Selection.*

Artefacts Canada

Canada's museum treasures... online! Peruse records on millions of museum objects, scientific specimens and archaeological sites. Visitors can now restrict their searches to records with images!

Heritage Forum

Where museum and conservation professionals meet to share ideas and information. *Heritage Forum* also offers access to listservs, job postings, directories and a vast array of additional resources.

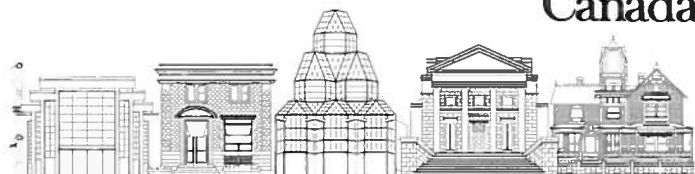
The Great Canadian Guide

The premier Internet connection to Canada's museums, galleries, attractions and cultural events! Visitors can use it to plan anything from a cross-country vacation to a local afternoon outing.

For a free trial subscription to the regularly updated *Research and Reference* online resources, or to find out more about CHIN's other products and services, visit www.chin.gc.ca. CHIN can be reached by e-mail at service@chin.gc.ca, or by phone at (819) 994-1200.

Site Licences are also available!

Canada



CANADIAN HERITAGE INFORMATION NETWORK

art libraries society of north america

28th annual conference

march 16-22, 2000

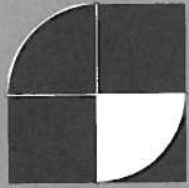
hilton pittsburgh

pittsburgh, pennsylvania



The Carnegie Institute c. 1920

Image courtesy of The Carnegie Public Library



ars libri ltd.

Currently Available:

Catalogue 118:
Art of the Nineteenth Century

Catalogue 117:
Modern Art: Rarities of the Avant-Garde

Catalogue 116:
Standard Reference Works in the History
of Art Before 1900

Catalogue 115:
Italian Art: Monographs on Artists

Catalogue 114:
Italian Art: General Works

Bulletin 104:
Old Master and 19th-Century Drawings
(Excluding Italian)

***Please visit our website! Our database is now
accessible, and is updated daily with new
acquisitions. Browse our stock, by author, title,
subject or artist.***

560 Harrison Avenue
Boston, MA 02118
tel: 617.357.5212
fax: 617.338.5763
e-mail: arslibri@arslibri.com
website: www.arslibri.com

table of contents

Welcome	7
ARLIS/NA Executive Board 2000	8
ARLIS/NA 2000 Conference Committee	9
Sponsors	11
Exhibitors	13
General Information	15
About Pittsburgh	16
Meeting Finder	20
Conference Program	24
Day-in-View Schedules	57
Hotel Floor Plan	64

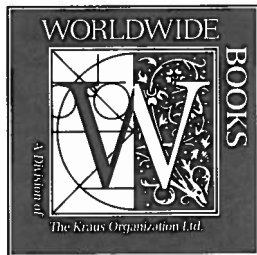
The State of the Art

Worldwide Books

A dynamic extension of your acquisitions department

We set the standard in selecting, appraising and distributing museum catalogues and trade books on art, architecture, photography & design

- ◆ Customized approval plans for comprehensive collection development
- ◆ Always the leader in supplying current, vital art exhibition catalogues
- ◆ Prompt handling of special orders for art-related titles around the globe
- ◆ Extensive search capabilities at www.worldwide.com
- ◆ 20,000 titles currently in stock



Worldwide Books

1001 W Seneca St
Ithaca NY 14850 USA
Phone 607-272-9200
Fax 607-272-0239
info@worldwide.com



welcome

welcome to pittsburgh

On behalf of the ARLIS/NA Executive Board and the 2000 Conference Planning Committee, it is my great pleasure to welcome you to the Society's 28th Annual Conference, *Links from the Past, Bridges to the Future*.

The conference co-chairs, Ann Abid (Cleveland Museum of Art), Mona Chapin (Cincinnati Art Museum), Jane Dunwoodie (University of Dayton), and Ray Anne Lockard (University of Pittsburgh) and their conference planning committee, from Ohio and Pittsburgh, have worked many hours to make this millennium conference complete with excellent programming and special events.

One of the most important aspects of the conference is the Exhibit Hall. I invite you to take the time to meet with all of our exhibitors and examine their resources. The Exhibit Hall Reception on Monday evening will give you an opportunity to discuss the state of book and electronic publishing in the fine arts—our booksellers have an incredible wealth of knowledge to offer us, so please take advantage of their presence! There are many sponsored coffee breaks and receptions in the Exhibit Hall this year—don't miss them!

The week long conference contains many activities and a full schedule. Enjoy the workshops, tours, meetings, sessions, and parties. Introduce yourself to a member you've never met before and enjoy exchanging information and new ideas. Be sure to welcome our many International attendees who have traveled from Europe and Latin America!

Congratulations and thanks to all of the presenters, speakers, and session moderators. Their expertise and knowledge provides attendees with a stimulating program rich in content. There are 23 programs from which to choose!

Sincerest thanks go to all of our generous sponsors who allow us to add many special events at no cost to attendees. Plan to attend the Welcome Party, sponsored by many of the ARLIS/NA Chapters, the Exhibits Reception and Silent Auction, the Convocation, and the Ars Libri Party!

Enjoy the conference as well as the landmarks and attractions that make Pittsburgh one of America's most beautiful cities.

Kathryn Wayne
ARLIS/NA President

arlis/na executive board 2000

officers

President

Kathryn M. Wayne
Art History/Classics
308F Doe Library
University of California-Berkeley
Berkeley, CA 94720
(510) 643-2809
(510) 643-2185 Fax
e-mail: kwayne@library.berkeley.edu

Vice President/President-Elect

Karen McKenzie
Art Gallery of Ontario
E.P. Taylor Research Library
317 Dundas Street W.
Toronto, ON M5T 1G4
(416) 979-6660, ext.389
(416) 979-6602 Fax
e-mail: Karen_McKenzie@ago.net

Past President

Mary E. Graham
University of Arizona
Arizona State Museum Library
Tucson, AZ 85721-0026
(520) 621-4695
(520) 621-2976 Fax
e-mail: megraham@u.arizona.edu

Secretary

Peter Blank
Ryerson & Burnham Library
The Art Institute of Chicago
111 S. Michigan Avenue
Chicago, IL 60603
(312) 443-3665
(312) 443-0964 Fax
e-mail: pblank@artic.edu

Treasurer

Katherine R. (Kitty) Chibnik
Avery Architectural & Fine Arts Library
Columbia University
1172 Amsterdam Ave., Mail Code 0301
New York, NY 10027
(212) 854-3506
(212) 854-8904 Fax
e-mail: chibnik@columbia.edu

Executive Director

Howard Adler
1550 S. Coast Hwy, Suite 201
Laguna Beach, CA 92651
(800) 892-7547
(949) 376-3456 Fax
e-mail: howard@arlisna.org

representatives

Canadian Representative

Marilyn Berger
McGill University
Blackader-Lauterman Library
3459 McTavish St.
Montreal, PQ H3A 1Y1
CANADA
(514) 398-4742
(514) 398-6695 Fax
e-mail: Berger@library.lan.mcgill.ca

Midwest Regional Representative

Louis Adrean
Cleveland Museum of Art Library
11150 East Blvd
Cleveland, OH 44106
(216) 421-7340, ext. 533
(216) 421-0921 Fax
e-mail: adrean@cma-oh.org

Northeast Regional Representative

Deborah Kempe
Frick Art Reference Library
10 E. 71st Street
New York, NY 10021
(212) 547-0658
(212) 879-2091 Fax
e-mail:
kempe@frick.org

South Regional Representative

Pat Lynagh
National Museum of American Art
National Portrait Gallery Library
Smithsonian Institution
Washington, DC 20560
(202) 357-1886
(202) 786-2583 Fax
e-mail: plynagh@nmaa.si.edu

West Regional Representative

Lorna Corbetta-Noyes
The Research Libraries Group
1200 Villa St.
Mountain View, CA 94041
(650) 691-2305
(650) 964-0943 Fax
e-mail: lcn@notes.rlg.org

arlis/na 2000 conference committee

conference planning advisory committee

Kathryn Wayne, President
University of California Berkeley

Louis Adrean, Midwest Regional Representative,
Cleveland Museum of Art

Kitty Chibnik, Treasurer
Columbia University

Karen McKenzie, Vice-President/President-Elect,
Art Gallery of Ontario

Howard Adler, Executive Director

Jane Durwoodie, Co-Chair, Local Arrangements
University of Dayton

Ray Anne Lockard, Co-Chair, Local Arrangements
University of Pittsburgh

Ann Abid, Co-Chair, Program
Cleveland Museum of Art

Mona Chapin, Co-Chair, Program
Cincinnati Art Museum

local planning committee

exhibits

Jane Carlin
University of Cincinnati

Judy Inwood
Cincinnati Public Library

fundraising

Sara Jane Pearman
Cleveland Museum of Art

internet room/conference web site manager

Jim Viskochil
Cleveland Museum of Art

registration

Anne Morris
Toledo Museum of Art Library

tours and transportation

Marcia Rostek, Frick Fine Arts Library,
University of Pittsburgh

Discover

SWANN



A U C T I O N S

Left: J.A.M. Whistler,
"Upright Venice,"
etching, c. 1879-80,
from the Schneiderman
Collection of American
and European Prints.
Sold on Nov 3, 1999
for \$13,800.



Right: A.L. Coburn,
"New York," with
20 hand-pulled
photogravures,
London and NY, 1910.
Sold on Dec 9, 1999
for a record \$28,750.



Thurs March 23
10:30am

Art and Architecture Books

Inquiries: Christine von der Linn ILLUSTRATED CATALOGUE: \$15

Mon April 3
10:30am & 2:30pm

Important 19th & 20th Century Photographs

Inquiries: Daile Kaplan ILLUSTRATED CATALOGUE: \$25

Thurs April 13
10:30am

Rare Books

Inquiries: Tobias Abeloff ILLUSTRATED CATALOGUE: \$25

Mon May 8
10:30am

Modernist Posters

Inquiries: Nicholas D. Lowry ILLUSTRATED CATALOGUE: \$25

Thurs May 11
10:30am & 2:30pm

Works of Art on Paper

Inquiries: Todd Weyman ILLUSTRATED CATALOGUE: \$25

Now accepting consignments for our Autumn 2000 auctions.

AUTOGRAPHS
BOOKS/MANUSCRIPTS
MAPS/ATLASES
PHOTOGRAPHS
POSTERS
WORKS OF ART ON PAPER

Swann Galleries, Inc.
104 East 25th Street, New York, NY 10010
212 254 4710 Fax: 212 979 1017
www.swanngalleries.com



sponsors

The following organizations have committed their support to the ARLIS/NA 28th Annual Conference. We wish to acknowledge and thank these important donors for their generosity. Information about these vendors, publishers, and book dealers is available through their Web pages linked to the ARLIS/NA Conference Sponsor Web page.

ABC-CLIO
American Craft Council
Andrew Cahan Bookseller
Ars Libri, Ltd.
Blackwell's Book Services
The Carnegie Museums of Pittsburgh
Casalini Libri
David Mirvish Books on Art
EBSCO Information Services
Erasmus Boekhandel
F. A. Bernett, Inc.
The Getty Grant Program
Getty Trust Publications
Grove's Dictionaries, Inc.
H.W. Wilson
H.W. Wilson Foundation
Harry N. Abrams, Inc.
Henry Pisciotta
Howard and Beverly Joy Karno
Innovative Interfaces
John Benjamins Publishing
K.G. Saur Publishing
Michael Shamansky, Bookseller, Inc.
OHIONET
Puvill Libros S.A.
Ray Anne Lockard
Research Libraries Group
University Library System, University of Pittsburgh
Worldwide Books
Yankee Book Peddler

We also wish to acknowledge the support of ARLIS/NA Chapters:

Central Plains
Delaware Valley
Midstates
Montreal/Ottawa/Quebec
Mountain West
New England
New York
Northern California
Northwest
Ohio Valley
Ontario
Southern California
Texas-Mexico
Western New York

F · A · BERNETT · INC



Rare & Scholarly Books

◆
FINE & DECORATIVE ARTS
ARCHITECTURE
ARCHAEOLOGY
◆

144 Lincoln Street

Boston, MA 02111

Tel 617-350-7778 · Fax 617-350-7722

email: artbooks@fabernett.com

Catalogues on Request

exhibitors

This list represents all exhibitors registered at the time of program printing. A complete list will be distributed to all conference attendees.

ABC-CLIO
Andrew Cahan Bookseller, Ltd.
Antique Collectors' Club
Ars Libri, Ltd.
Art Fact, Inc.
Artforum
Ashgate Publishing
Aux Amateurs de Livres' International
Blackwell's Book Services
Califia Books
Canadian Heritage Information Network, (CHIN)
Casalini Libri
D.A.P./Distributed Art Publishers, Inc.
Design and Applied Arts Index
Duncan Systems Specialists, Inc.
EBSCO Information Services
Endeavor Information Systems, Inc.
EOS International
Erasmus Boekandel
Esteva Servicios Bibliotecarios
F.A. Bennett, Inc.
Gale Group
Gallery Systems
Getty Trust Publications
Granary Books
Grove's Dictionaries, Inc.
H W Wilson
Harrassowitz
Hilmarton Manor Press
Howard Karno Books, Inc.
IDC Publishers
Jean Touzot, Libraire-Editeur
John Benjamins Publishing
K.G. Saur Publishing
Kapco Library Products
Luna Imaging, Inc.
Marc Link Retrospective Conversion
Michael Shamansky, Bookseller Inc.
Nexus Press
Norman Ross Publishing, Inc.
OMI/Old Manuscripts and Incunabula, Inc.
Paragon Book Gallery, Inc.
Phaidon Press, Inc.
Puvill Libros S.A.
R.W. Smith Bookseller
RAM Publications
Norman Ross Publishing, Inc.
Research Libraries Group
Saskia Ltd. Cultural Documentation
Scholar's Choice
Sound View Press
Thomas Heneage Art Books
Universal Color Slide Company
Worldwide Books

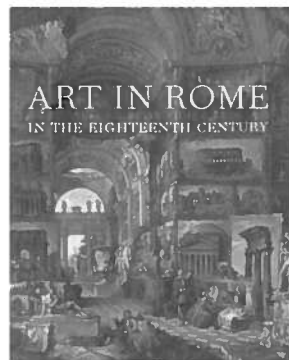
MERRELL PUBLISHERS

Art in Rome in the Eighteenth Century

Edgar Peters Bowron, Joseph J. Rishel et al.

\$95.00, hardback, ISBN 1 85894 098 2
624 pages, 28 x 23 cm, 500 illustrations, 200 in color
Published in association with the Philadelphia Museum of Art

The grand scale and spectacular diversity of Rome are documented in this definitive history of the city's eighteenth-century art. A steady stream of art in all media – oil and fresco, bronze and marble, terracotta and porcelain, silver and mosaic, jewelry and furniture – was created in Rome during the eighteenth century to embellish the city's churches, palaces, fountains, piazzas, gardens, and galleries, as well as for export to the stately homes of aristocrats visiting Rome on the Grand Tour. The artists include not only major Italian figures such as Piranesi, Maratti and Batoni, but also northern Europeans such as Flaxman, Fuseli and Sergerl.



The Story of Time

Kristen Lippincott, Umberto Eco, E.H. Gombrich et al.

\$45.00, hardback, ISBN 1 85894 072 9
304 pages, 28 x 24.5 cm, 400 color illustrations
Published in association with the National Maritime Museum, Greenwich

*Will serve to underline the impact of our profound relationships with time
History Today*

*Essays from the lords of time ... powerful
New Scientist*

This monumental publication is one of the most important, high-profile books published to mark the millennium, examining the very subject that gives the millennium its meaning: TIME. Multi-disciplinary and cross-cultural in its approach and lavishly illustrated with objects from all corners of the world, the book is written by an outstanding international cast of authors, including Umberto Eco and Sir Ernst Gombrich.

Frameworks

Form, Function & Ornament in European Portrait Frames

Paul Mitchell and Lynn Roberts

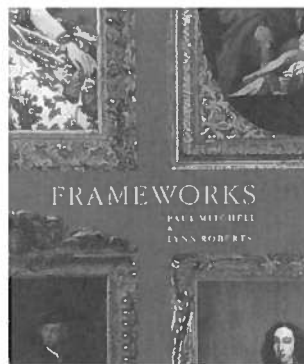
\$125.00, hardback, 1 85894 037 0
480 pages, 27.5 x 22 cm, 370 illustrations, 300 in color

The first survey to identify the main portrait-frame styles associated with the major European artistic movements. Virtually all the pictures illustrated are reproduced in their frames for the first time.

Huge and scholarly ... cannot fail to have a profound influence on art scholarship and museum practice. It sets an example for publishers and art historians to follow.

Antiques Trade Gazette

*Richly illustrated ... thorough
Choice*



open meeting and guest policy

ARLIS/NA business meetings are open to all members. All guests are encouraged to register for the full conference. If not preregistered, guests will be permitted to join tours and special events on a space available basis after all registered attendees have been accommodated.

first time attendees

Welcome. We are happy you joined us for the 28th annual conference. Although the Society has grown over the years, you will find our conferences very intimate and friendly, with many special group events. If you aren't a member of any Committee, Section, Division, or Round Table, we encourage you to attend any of these business meetings if you are interested in joining a particular group. The conference provides you with a great opportunity to network with many of your colleagues working in similar positions throughout North America. Please plan to attend the Welcome Party on Saturday evening from 9:30 p.m. - 11:00 p.m.

tours and workshops

Detailed descriptions of tours and workshops are provided herein and require preregistration.

general information

silent auction

On Monday night, as part of the Exhibitor's Reception, we have planned a Silent Auction with lots of goodies on which to bid. Proceeds from this event will benefit the ARLIS/NA 25th Anniversary Scholarship Fund. Your donation is tax deductible.

hotel

The Hilton Pittsburgh has been the city's largest and most elegant hotel since opening in December 1959. The Hilton represents the final piece of the development project known as "Renaissance I" which, through aggressive water-front development, transformed Pittsburgh from the industrial, "workshop to the world", to a highly commercial city specializing in high-tech and banking firms. Land was cleared and bridges were re-built to create Point State Park at the confluence of the Monongahela, Allegheny, and Ohio Rivers. Adjacent to Point State Park and unmistakably visible as the anchor to the Golden Triangle, the Hilton Pittsburgh has graced the city's fabulous skyline and welcomed travelers of all sorts for several decades.

hotel restaurants

Sterling's
Fine food served in a relaxed setting. Upscale dining featuring steak and seafood selections. Formal environment offers great food in quiet setting.

Promenade
Cafe setting including a seasonal outdoor cafe. Casual American-fare featuring daily buffets with the chef's favorite selections. Open for breakfast, lunch, dinner, and snacks.

Pub
Hearty sports bar featuring sandwich and snack selections. Great meeting place for clients and friends.

copy and business services

A Business Center is located in the Hilton Pittsburgh. Complete copying and printing services are available as well as facsimile services. Mailing and shipping services include Federal Express, UPS, and U.S. Postal Service. Price sheets are available to those needing services.

42 Southwark Street, London SE1 1UN, United Kingdom
Tel +44 20 7403 2047 Fax +44 20 7407 1333

Please make trade orders through Rizzoli
Tel 888 330 8477 Fax 800 672 2054

about pittsburgh

pittsburgh pennsylvania

Pittsburgh is a city of surprises! No other city in the country has such a spectacular entrance and a downtown district situated on a triangle of land where two mighty rivers — the Allegheny and the Monongahela — flow together to form the great Ohio River. Given its inland waterway environs, Pittsburgh is also known as “the city of bridges.” Allegheny County alone hosts hundreds of them, including Pittsburgh’s historic Smithfield Street Bridge (1883) by Gustave Lindenthal and the country’s only trio of bridges. The identical “Three Sisters” — the Sixth, Seventh and Ninth Street bridges were designed by Stanley Roush from 1925-28.

Pittsburgh is also a city of ethnic neighborhoods. The Strip District offers visitors its many ethnic wholesale markets and micro-breweries; the South Side, its excellent restaurants, art galleries and antique shops; the North Side, Photo Antiquities, the Andy Warhol Museum, the Carnegie Science Center, the Mattress Factory and the National Aviary; and Oakland, the Carnegie Institute, University of Pittsburgh and Carnegie Mellon University.

You will find splendid examples of 19th century architecture such as H. H. Richardson’s Allegheny County Courthouse and Jail (1884-88) and such unique 20th century monuments as the glass tower and plaza Philip Johnson built for Pittsburgh Plate and Glass from 1979-84.

Pittsburgh is reinventing itself in a period of unprecedented growth. While the steel mills and coke furnaces that built the nation and created immense wealth for Andrew Carnegie and Henry Clay Frick during the 19th century closed in the 1980s, the city has become a leader in high-tech and bio-medical research. Several cultural institutions debuted in Pittsburgh during the 1990s: the Frick Art and Historical Center, the Heinz Architectural Center, the Andy Warhol Museum, and the Senator John Heinz Regional Pittsburgh History Center.

Currently there are six major building projects underway downtown: an addition to the cultural district that is a collaboration between Michael Graves, Dan Kiley and Louise Bourgeois, an addition to the convention center by Rafael Violy Architects, Alcoa’s recently completed six-story headquarters on the banks of the Allegheny River and Mellon Bank’s new 12-story Client Service Center downtown that is currently under construction and two new sports stadiums that are underway — one for baseball and one for football. In addition, the new Lazarus Department Store opened its downtown store in Fall 1998 and Lord & Taylor will open a new store in the near future.

One can easily see why the ARLIS/NA Ohio Valley Chapter is excited and proud to host a conference with the theme *Links from the Past - Bridges to the Future* in this rapidly changing city that is also home to an extensive historical heritage.

pittsburgh area attractions

This list of highlights represents only a taste of the many attractions available for visitors. Additional information on Pittsburgh attractions and tours will be supplied at the registration desk during the conference.

dance, music and theatre

Kuntu Repertory Theatre
March 23-April 8; *Nefertari Rising*, Masonic Temple; (412) 648-7540

Pittsburgh Opera - March 11-19; *Werther*, Benedum Center; (412) 456-6666.

Pittsburgh Symphony Orchestra - March 16-19; Pittsburgh Pops Series, *Songs My Mother Taught Me* with Lorna Luft, Heinz Hall; (412) 392-4900

Renaissance and Baroque Society - March 18; Concerto Palatino (Baroque Brass) at Synod Hall, St. Paul’s Cathedral, North Craig Street and Fifth Avenue, Oakland

museums

Andy Warhol Museum, The exhibition, *Andy Warhol Drawings: 1942-1987*, will be on view during the conference. 117 Sandusky St., (412) 237-8300

The Carnegie Museum of Art, Impressionist and post-Impressionist paintings; 19th and 20th century American and European paintings, sculpture and decorative arts. *The Carnegie International Exhibition* will be open during the conference. 4400 Forbes Ave., (412) 622-3131

The Carnegie Museum of Natural History, “Home of the Dinosaurs” features 10 full skeletons, Ancient Egypt, Polar World, Hall of Geology, Hall of Minerals and Gems, Halls of African and North American Wildlife. 4400 Forbes Ave., (412) 622-3131

Carnegie Science Center, Over 250 hands-on exhibits pertaining to science and technology, Omnimax Theater, SciQuest exhibit, Miniature Railroad and Village. One Allegheny Ave., (412) 237-3400

Frick Art & Historical Center, 6-acre complex including the home of Henry Clay Frick, 1897, Greenhouse, The Car and Carriage Museum and the Frick Art Museum. The exhibition, *Drawn in Light: Paintings by Jean-Francois Millet*, will be on view in the Frick Art Museum. 7227 Reynolds St. in Point Breeze, (412) 371-0606

Hartwood, 629-acre re-creation of a 16th century English country estate. 215 Saxonburg Blvd., (412) 767-9200

Hunt Institute for Botanical Documentation, Art collection focusing on botanical illustration, Hunt Library, Carnegie Mellon University, (412) 268-2434

Mattress Factory, A museum of site-specific art with a permanent collection by thirteen artists that also features temporary installations. 500 Sampsonia Way, (412) 231-3169

Regina Gouger Miller Gallery, Purnell Center for the Arts, Carnegie Mellon University, specializing in works by contemporary

artists; *Master Thesis Exhibition* by third year graduate students, March 16-April 16, 2000; (412) 268-3877

The National Aviary, 23 recreated natural habitats with over 250 exotic birds. Allegheny Commons West, (412) 323-7235

Pittsburgh Center for the Arts, Exhibits contemporary regional, national and international art. 6300 Fifth Avenue, (412) 361-0873

Pittsburgh Children’s Museum, 10 Children’s Way (Allegheny Center), (412) 322-5058

Senator John Heinz Pittsburgh Regional History Center, Located in the renovated Chautauqua Lake Ice Co. Building, focuses on the history and heritage of Western Pennsylvania, permanent exhibits include *Glass: Shattering Notions*. 1212 Smallman Street, (412) 454-6000

Society for Contemporary Crafts, Exhibitions of artworks by contemporary artisans. 2100 Smallman Street, (412) 261-7003

University Art Gallery, An exhibition of artists books from libraries and museums in the ARLIS/NA Ohio Valley Chapter, Frick Fine Arts Building, University of Pittsburgh, Schenley Drive, (412) 648-2400

Westmoreland Museum of American Art, “From Westmoreland Glass to Contemporary Glass,” Feb. 23-Apr. 23, 2000, in Greensburg, PA, (724) 837-1500

Casalini libri

*General Italian book
dealers for publications
to libraries throughout
the world*

Our services include:

- Highly selective approval plans to meet every library's special requirements
- Standing orders for series and multi-volume monographs
- Subscriptions to periodicals with direct centralized mailing, subscriptions to on-line periodicals and TOC services
- Physical processing (library binding, bar coding)
- Management reports and statistics
- Bibliographic information for new publications:
in printed form (and via e-mail)
bibliographic cards (free of charge) sent weekly or monthly; catalogues produced at regular intervals in different subject areas
in electronic format
USMARC and UNIMARC records via MIME, FTP, on floppy disk, or on machine readable tape
- Specialized bibliographies compiled on specific subjects
- Web site offering full details of our services, access to our database for monographs and periodicals (160,000 entries, updated each week) as well as direct ordering for volumes and MARC records
- EDI services (offers, orders, reports, claims, invoices, etc.)

Via Benedetto da Maiano, 3
50014 Fiesole (FI) - Italy

Tel. +39-055.5018.1
Fax +39-055.5018.201

<http://www.casalini.it>
gen@casalini.it

more about pittsburgh

nature

Beechwood Farms Nature Reserve, (412) 963-6100

Frick Park, nature preserve offering several walking trails, at Braddock Avenue and Beechwood Blvd.

Rodef Shalom Biblical Botanical Garden, 4905 5th Ave. (412) 621-6566

Schenley Park, landscaped with serpentine drives by British landscape architect, William Falconer, Schenley Dr., (412) 622-6919

Phipps Conservatory, Schenley Park, (412) 622-6914

uniquely pittsburgh

In 1900 there were 20 inclines in Pittsburgh that carried people, wagon teams, and coal to their businesses and homes. Two inclines, preserved as historical monuments, are still in operation.

Duquesne Incline - Lower station at 1197 W. Carson St. just west of the south end of the Fort Pitt Bridge, (412) 381-1665. Utilizing two original 1877 cable cars with Eastlake interiors, the Duquesne Incline is a working museum.

Monongahela Incline - Lower station is on W. Carson St. across from Station Square, (412) 231-5707. Ride 400 feet up Mount Washington for a spectacular view of the city.

atms

There are no ATM machines in the hotel, but three machines

are nearby.

Dollar Bank
Penn Avenue, approximately one block from the hotel

Mellon Bank
Penn Avenue, approximately one and one-half blocks from the hotel

Fifth Avenue Place
Fifth Avenue between Liberty and PennAvenues

An ATM is located inside the shopping arcade

foreign currency exchange American Express Travel Service

2 PPG Place on Market Square
391-3202

Foreign Exchange Tellers
One Mellon Bank Center
Grant Street
234-4215

liquor

Wines and Spirits
529 Liberty Avenue at Fifth Ave.
565-3664

news stands

Liberty News
604 Liberty Ave., across from Fifth Avenue Place
281-9772

Pittsburgh News and Lotto
Sixth Street and Penn Avenue
281-0665

pharmacies CVS

226 Liberty Avenue
at Sixth St.
281-0403

Eckerd Drug
519 Penn Avenue

at Sixth St.
391-0969

hospitals

**Downtown
Mercy Hospital**
1400 Locust Street
232-8111
(Emergencies: 232-8222)

**Oakland
University of Pittsburgh
Medical Center**
Presbyterian Hospital
200 Lothrop Street
647-2345

quick printing/ photocopying

Kinko's
210 Grant Street
471-8004

Minuteman Press
405 Smithfield St.
281-2811

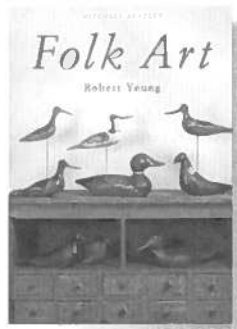
meeting finder

meeting finder

Academic Library Division	Sun.	9:00 a.m.
Accreditation Standards Discussion Group	Sun.	8:00 a.m.
Architecture Section	Sun.	10:30 a.m.
Art & Design School Library Directors Discussion Group	Sun.	4:00 p.m.
Art & Design School Library Division	Sun.	9:00 a.m.
Art Documentation Editors	Sat.	4:00 p.m.
Avery Users Group	Mon.	8:00 a.m.
Awards Committee	Sat.	4:00 p.m.
BHA Users Group	Sun.	8:00 a.m.
Canadian Members Meeting	Tues.	12:00 noon
Cataloging Advisory Committee	Sat.	5:30 p.m.
Cataloging Problems Discussion Group	Sun.	4:00 p.m.
Cataloging Section	Sun.	10:30 a.m.
Collection Development Committee	Sat.	5:30 p.m.
Decorative Arts Round Table	Sun.	8:00 a.m.
Development Committee	Fri.	4:00 p.m.
Diversity Committee Meeting	Sat.	5:30 p.m.
Executive Board Meeting	Thurs.	1:00 p.m.
Executive Board Meeting	Fri.	8:00 a.m.
Executive Board Meeting	Wed.	8:30 a.m.
Finance Committee	Fri.	5:30 p.m.
Gay & Lesbian Interests Round Table	Sun.	8:00 a.m.
George Wittenborn Awards Committee	Fri.	4:00 p.m.
Gerd Muesham Award Committee	Sat.	4:00 p.m.
Getty Vocabulary Users Group	Fri.	5:30 p.m.
Indigenous Art & Culture Round Table	Sun.	8:00 a.m.
Interlibrary Loan Discussion Group	Sun.	10:30 a.m.
International Relations Committee	Sat.	5:30 p.m.
L.A. Conference Planning Meeting	Sun.	8:00 a.m.

Membership Committee	Sat.	4:00 p.m.
Membership Meeting	Mon.	11:15 a.m.
Museum Library Directors Discussion Group	Sun.	10:30 a.m.
Museum Library Division	Sun.	9:00 a.m.
New Art Round Table	Sun.	8:00 a.m.
Nominating Committee	Fri.	5:30 p.m.
North American Relations Committee	Sat.	4:00 p.m.
Problem of Provenance Discussion Group	Sun.	4:00 p.m.
Professional Development Committee	Sat.	5:30 p.m.
Public Library Discussion Group	Sun.	4:00 p.m.
Public Library Division	Sun.	9:00 a.m.
Public Policy Committee	Sat.	5:30 p.m.
Publications Committee	Fri.	6:00 p.m.
Reference & Information Services Section	Sun.	10:30 a.m.
Research Committee	Sat.	5:30 p.m.
RLG Art & Architecture Group	Fri.	1:00 p.m.
SCIPIO Users Group	Mon.	8:00 a.m.
Serials Round Table	Sun.	8:00 a.m.
Serials Swap I	Sat.	9:30 p.m.
Serials Swap II	Mon.	8:00 a.m.
Serials Swap III	Mon.	8:30 p.m.
Space Planners Round Table	Sun.	8:00 a.m.
Standards Committee	Sat.	4:00 p.m.
Technology Committee	Sat.	4:00 p.m.
Travel Awards Committee	Sat.	4:00 p.m.
Visual Resources Advisory Committee	Sat.	5:30 p.m.
Visual Resources Division	Sun.	9:00 a.m.
Visual Resource Software Users Discussion Group	Sun.	10:30 a.m.
Webmaster Discussion Group	Sat.	8:00 a.m.
Women and Art Round Table	Sun.	8:00 a.m.

New Titles



Folk Art
Robert Young
Mitchell Beazley
1840001364
9 1/2 x 11 3/4 inches
176 pages
over 200 color
Hardbound January 2000
\$45.00

The Wallace Collection Catalogue of Furniture

Peter Hughes
Wallace Collection
0900785519
6 3/4 x 9 1/2 inches
1,677 pages
384 color, 689 b&w,
33 diagrams
Paperback/3 volumes boxed
February 2000
\$295.00



Jewellery in Britain 1066-1837 A Documentary, Social, Literary and Artistic Survey

Diana Scarisbrick
Michael Russell Publishing, Ltd.
0859551903
8 1/2 x 11 inches
431 pages
52 color plates, 133 b&w
Hardbound January 2000
\$125.00

ART BOOK SERVICES

Spring 2000

Paris Salons 1895-1914 Volume V Objets D'Art & Metalware

Alastair Duncan
Antique Collectors' Club
1851493042
8 1/2 x 11 inches
576 pages
2,000 b&w, 20 color
Hardbound March 2000
\$99.50

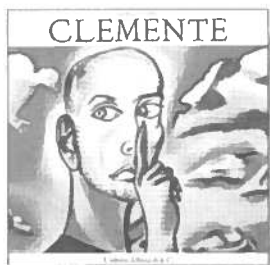


Dino Martens Muranesse Glass Designer, Catalogue of Work

Marc Heiremans
Arnoldsche
3925369945
8 3/4 x 11 3/4 inches
208 pages
187 color, 311 b&w
Hardbound January 2000
\$145.00

Clemente

Danilo Eccher
Umberto Allemandi & C.
8842209171
11 1/2 x 11 inches
178 pages
153 color reproductions,
many b&w photographs
Paperback January 2000
\$85.00

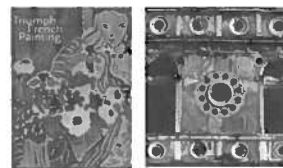


Botero Catalogue Raisonne Paintings 1975-1990

Text by Edward J. Sullivan
and Jean-Marie Tasset
Acatos
2940033404
9 3/4 x 12 1/2 inches
450 pages
120 color, 500 b&w
Hardbound February 2000
\$295.00

The Triumph of French Painting Masterpieces from Ingres to Matisse

Sona K. Johnston
William R. Johnston
Scala Books
1857592336
8 3/4 x 11 inches
160 pages
68 color
Hardbound March 2000
\$35.00



Ruskin's Venice The Stones Revisited

Photography by Sarah Quill
Ashgate Publishing Limited
1840146974
7 1/4 x 9 3/4 inches
208 pages
275 color and b&w
Hardbound February 2000
\$49.95

ART BOOK SERVICES

Market Street Industrial Park, Wappingers Falls, NY 12590 • 800.247.9955
www.artbookservices.com

The ART BOOK FAIR

Sponsors

Publishers Weekly

and

The International Art Book
Publishers' Association

JUNE 11-12, 2000

METROPOLITAN PAVILION - 125 WEST 18TH STREET - NEW YORK

THE SPECIALIST INTERNATIONAL TRADE SHOW
FOR ILLUSTRATED BOOKS

Free Registration On-Line at



www.artbookfair.com

Registration at the door will be \$20.00

Antiques - Architecture - Art - Design - Decorative Arts - Fashion
Gardens - Interiors - Landscape Design - Lifestyle - Photography - Reference

FIRST NIGHT RECEPTION

On Sunday, June 11th from 5:30 pm until 7:00 pm both exhibitors and attendees will have the opportunity to "MEET THE PRESS" at a wine and cheese reception. Reporters from *Publishers Weekly*, *Library Journal* and other media will be on hand to discuss the latest news in the publishing world.

Interested in Exhibiting?

The Art Book Fair is a single, focused event for fine quality illustrated books. Publishers that provide related books and/or services are welcome as exhibitors.

For exhibiting information in the US contact:

Frank Campagna, The Art Book Fair c/o Tri-State Services, Tel: 914-331-7581 Ext. 111 Fax: 914-331-1571

conference program

thursday, march 16, 2000

1:00 p.m. - 6:00 p.m. **ARLIS/NA Executive Board Meeting - Kings Plaza**
(Open to membership on a seating available basis)

friday, march 17, 2000

8:00 a.m. - 1:00 p.m. **ARLIS/NA Executive Board Meeting - Kings Plaza**
(Open to membership on a seating available basis)

11:30 a.m. - 6:00 p.m. **REGISTRATION DESK OPEN - Ballroom Foyer**

1:00 p.m. - 6:00 p.m. **Art and Architecture Group (RLG) Meeting - Traders**
(Open to AAG members only)

Peter Blank

4:00 p.m. - 5:30 p.m. **Business Meetings**

Development Committee - Chartiers
 Betsy Lantz

George Wittenborn Awards Committee - Kings Terrace
 James Carmin

5:30 p.m. - 7:30 p.m. **Business Meetings**

Finance Committee - Rivers
 Martha Childers

Getty Vocabulary Users Group - Liberty
 Robin Johnson

Nominating Committee - Brigade
 Ann Abid

6:00 p.m. - 7:30 p.m. **Business Meeting**

Publications Committee - Board
 Linda McRae

friday tours

Tour 1

Fallingwater and Kentuck Knob with Sculpture Garden
8:00 a.m. - 6:30 p.m.

Bus will depart from the Liberty Ave. entrance at the Hilton

Limit: 45 people

Price: \$125

Join us as we spend an entire day exploring two very different private residences designed by Frank Lloyd Wright.



friday

Fallingwater, the weekend home of the Edgar J. Kaufmann, Sr. family from 1937 until 1963, has often been claimed to be the most famous house in the world. Edgar J. Kaufmann, Jr., presented the house, its contents and grounds to the Western Pennsylvania Conservancy in 1963 when it was opened to the public. Famed for its placement over a waterfall, Fallingwater is the only remaining great Wright house with its setting, original furnishings, and art work intact.

After visiting the Kaufmann home at Fallingwater, we will see a cozy mountain house that Wright built for I.N. and Bernadine Hagan, owners of Hagan Dairy in Uniontown, Pennsylvania. Called Kentuck Knob, the house was commissioned from FLW in 1953. This small and intimate private residence was completed in 1956. The home is built on a hexagonal grid, and is constructed entirely of tidewater red cypress and native fieldstone. An open floor plan, cantilevered overhangs and great expanses of glass artfully integrate the outdoor and indoor spaces. From the living room, visitors have a breathtaking panorama of the Youghiogheny River Gorge and the mountains that surround it. The interior reflects the presence of current owners, the Lord and Lady Palumbo of London, England. A sculpture park, filled with Lord Palumbo's collection, has been integrated with the woodlands and informal gardens surrounding the house.

Accessibility:

Considerable walking and numerous steps are involved at Fallingwater, so attendees with medical problems, etc. may find the tour too strenuous. People with disabilities requiring special assistance may be accommodated with advanced notice. Comfortable shoes are strongly advised. The pavilion and first floor of Fallingwater are wheelchair accessible, and a video about the upper floors is available.

There are four steps to mount for access into Kentuck Knob.

Price includes lunch at The Stone House Restaurant, situated between Fallingwater and Kentuck Knob.

Tour 2

Highlighting Pittsburgh Glass

9:00 a.m. - 6:00 p.m.

Bus will depart from the Liberty Ave. entrance at the Hilton

Limit: 45 people

Price: \$50

During the 19th century the center of the country's glass industry was located in Pittsburgh and Allegheny County. Two glassworks were operating in Pittsburgh by 1797 and, by 1837, 15 glass factories were established in the city with another 13 in surrounding counties. By the end of the 19th century one quarter of American glass came from Western Pennsylvania.

Anne Madarasz, curator for the History Society of Western Pennsylvania, will lead us on this interesting tour of Pittsburgh's glass history. We will begin downtown at the First Presbyterian Church with its 14 stained glass windows by Louis Comfort Tiffany. We will then walk next door to Trinity Episcopal Cathedral to see the results of the restoration of their stained glass windows by Hunt



Stained Glass Studios in Pittsburgh. Ms. Madarasz will then take us on a guided tour of the permanent exhibition entitled *Glass: Shattering Notions* that she curated at the Senator John Heinz Regional Pittsburgh History Center.

Prior to lunch we will travel across the Allegheny River to Calvary Methodist Church on the North Side. This church is in the Victorian Gothic style, popular during the Gilded Age and is noted for its three Tiffany windows that were exhibited at the Chicago World's Fair before their installation in Pittsburgh.

The tour will travel across the Point and the two rivers for lunch, where you will have the opportunity to dine on your own amidst the splendor of the Grand Concourse Restaurant. Located in the old waiting room of the renovated Pittsburgh and Lake Erie Railroad, the Grand Concourse is noted for its fine menu, as well as its barrel vault of stained glass.

After lunch we will have a guided tour of Hunt Stained Glass Studios with Nicholas Parrente, the artist who restored the windows in Trinity Episcopal Cathedral downtown. Nick will tell us about the design and manufacturing processes involved in making stained glass.

We will then travel across the Monongahela River into Pittsburgh's Oakland neighborhood, the location of the University of Pittsburgh's Heinz Chapel. The towering 73-foot stained glass doublet windows are by Charles Connick of Boston who was a leader in the rediscovery of the Gothic stained glass technique.

The tour will end with a visit to a private home rich in stained glass and a trip to the Morgan Art Gallery where we will see art glass by contemporary artists.

This tour is not wheelchair accessible.

Tour 3

Corporate Art Collections

2:30 p.m. - 6:30 p.m.

Meet at the ARLIS/NA Registration Desk

Limit: 35 people

Price: \$40

Meet Mrs. Ann Wardrop (Life Member of the Board of Trustees of the Carnegie Institute and member of the Board of Trustees for both Carnegie Museum of Art and the Carnegie Library of Pittsburgh) and join us for a rare treat. Mrs. Wardrop will take us on a tour of two of Pittsburgh's important art collections. The tour will begin downtown at the Duquesne Club. This private club, founded in 1873, has long been the bastion of Pittsburgh's greatest industrialists and civic leaders. Home to a collection that includes works by such leading regional artists as George Hetzel, Aaron H. Gorson and Joanna Hailman, the club's collection of ten paintings by David Gilmour Blythe is of national significance. In addition, we will view pieces by artists who exhibited at Carnegie International, Venice Biennale, Royal Academy of Art in London and Paris Salon exhibitions.

We will then walk to Mellon Bank, currently one of the largest regional banks in the country, to view and learn about this corporation's art collection. Mellon Bank was founded in 1869 by



Tour 4

Judge Thomas Mellon. It was his son, Andrew Mellon who would later endow the National Gallery of Art in Washington, D.C. and his grandson Paul Mellon who would become one of the world's wealthiest art patrons.

The Mellon Bank's art collections owned by members of the Mellon family, were started because of the family's great interest in art collecting. The collection focuses on English paintings and watercolors from the 18th, 19th, and 20th centuries and 19th century American painting.

This tour is wheelchair accessible.

Beaux Arts and Hi-Tech: A Tour of Carnegie Mellon University

1:00 p.m. - 5:00 p.m.

Bus will depart from the Liberty Ave. entrance at the Hilton

Limit: 45

Price: \$30

Tour Guides: Henry Pisciotta, Head, Arts and Special Collections, University Libraries, Carnegie Mellon University

Martin Aurand, Architecture Librarian and Archivist, University Libraries, Carnegie Mellon University and author of *Progressive Architecture of Frederick G. Scheibler, Jr.* (University of Pittsburgh Press, 1994).

Accompany our two knowledgeable tour guides as we visit Carnegie Mellon University in its centennial year! Carnegie Mellon University has enjoyed a reputation for innovation in higher learning since its founding by Andrew Carnegie. Like only a handful of tech schools, the arts have always been a major part of its curriculum. Since the 1980s, the libraries have been recognized as leaders toward the electronic future. Carnegie Mellon has one of the nation's most completely-realized Beaux-Arts campuses, augmented by a recent award-winning campus plan. The tour will include some or all of the following: the College of Fine Arts Building, the Purnell Center for the Arts, the Studio for Creative Inquiry, the Intelligent Workplace, the University Library, and perhaps a robot or two. The Art and Special Collections Department of Hunt Library on campus will host a reception for tour participants. Wear comfortable shoes.

This tour is wheelchair accessible.

Saturday, March 18, 2000

7:30 a.m. - 6:00 p.m.

8:00 a.m. - 10:00 a.m.

9:00 a.m. - 12:00 p.m.

REGISTRATION DESK OPEN

Discussion Group

Webmasters - Kings Terrace

WORKSHOP I - Kings Garden South Collection Development

Enrollment limit: 30

Price: \$55

Workshop Moderator Team: Nancy Pistorius (Leader), Humanities Collection Management Coordinator, General Library, University of New Mexico, Albuquerque



Timothy R. Shipe, Arts & Literature Bibliographer, University of Iowa Libraries

Sarah Dickenson, Collections Librarian, Harvard Graduate School of Design

Adeane Bergman, Librarian, Bapst Art Library, Boston College

This workshop on collection development will provide a forum for continuing education for art library professionals new to the profession as well as seasoned professionals desiring a refresher course in specific collection development areas. The focus will be on three areas of collection development: responsibilities, resources, and collection evaluation.

Responsibilities will examine the range of responsibilities the library professional may expect to encounter including how these vary by library type.

Resources will explore available resources, how to identify them and how to use them effectively. This will include discussion on resources that address specific collection development needs or problems when acquiring or replacing materials.

Collection evaluation will focus on the process of evaluations and why they are necessary, how they are accomplished, and the potential impact on accreditation demands.

The workshop will be led by a team of librarians knowledgeable and experienced in collection development and management. Participants will be encouraged to actively share in the discussion and to raise related collection development issues. There will be a question and answer period during the final stage of the workshop.

WORKSHOP II
They Never Covered This in Library School: Basic Resources in Ancient Art and Archaeology

Generously Sponsored by: University Library System, University of Pittsburgh

Location: Hillman Library, University of Pittsburgh, Room 272 and the Digital Instruction Lab, Ground Floor.

Bus will depart from the Liberty Ave. entrance at the Hilton at 8:30 a.m.

This workshop is wheelchair accessible.

Enrollment Limit: 36

Price: \$65

Workshop Coordinators/ Moderators: Barbara Prior, Head, The Clarence Ward Art Library, Oberlin College

Barbara Polowy, Art Librarian, Hillyer Art Library, Smith College

Have you ever wondered if there are basic resources in ancient art and archaeology with which you are not familiar or not using to their full potential? Building on the successes of similar workshops at past ARLIS/NA conferences, *They Never Covered this in Library School: Basic Resources in Ancient Art and Archaeology* will cover both print and electronic resources from the various disciplines needed to research ancient sites and objects. This workshop is for those who never received instruction in these areas in library school or for those new to art, museum, or VR libraries.



During the morning, Chris Huemer will discuss the challenge of researching objects or sites excavated before the days of published excavation reports, using Italy as an example. Eileen Markson will follow with a discussion on basic ancient art and archaeological research using published reports, corpuses, etc. The morning session will emphasize print resources although important electronic resources will also be described.

The afternoon session, led by Jean Wellington and Barbara Polowy, will provide hands on training for selected electronic resources such as *DYABOLA* and *Perseus*.

Speakers:

Ancient Art and Archaeology Bibliography Room 272, Hillman Library

Christina Huemer, Librarian, American Academy in Rome, Rome, Italy
"Ancient Art and Archaeology: Early Resources"

Eileen Markson, Head Rhys Carpenter Library, Bryn Mawr College
"Ancient Art and Archaeology: Modern Resources"

Electronic Resources in Ancient Art and Archaeology Computer Training Lab, Ground Floor, Hillman Library

Jean Wellington, Head, Classics Library, University of Cincinnati
Barbara Polowy, Art Librarian, Hillyer Art Library, Smith College

INTERNET ROOM OPEN -Stanwix

WORKSHOP III - Kings Garden South
Preservation Management for Art Library Collections

Enrollment limit: 50

Price: \$55

Workshop Coordinator: Sally A. Buchanan, Associate Professor in the Department of Library and Information Science, School of Information Sciences, the University of Pittsburgh. A world renowned preservation expert, her area of expertise is the preservation of library and archival materials, especially books, manuscripts and photographs and, in particular, the preservation management of research collections and recovery from disasters.

Professor Buchanan will lead this workshop focusing on the preservation of art books from the manager's perspective. Ms. Buchanan will discuss the unique preservation challenges of new technology, and the special binding issues surrounding art books.

The preservation management of art library collections to ensure access as well as longevity is challenging. Perhaps more than in any other collections, unusual formats, color printing and coated papers create problems that call for creative solutions and close collaboration among experts. This workshop will emphasize management approaches for responding to preservation needs including selection issues, setting priorities, "selling" preservation and funding. A variety of preservation choices will also be discussed: reformatting, digitization, conservation, and preventative measures. A panel of three professionals in the field will share expertise and encourage questions.

Speakers: Sally Buchanan, Associate Professor of Library and Information Science, University of Pittsburgh

9:00 a.m. - 4:00 p.m.

10:00 a.m. - 6:00 p.m.

1:00 p.m. - 4:00 p.m.

Jean Ann Croft, Preservation Librarian, University Library System,
University of Pittsburgh

Robert Burton, Digital Production Librarian, University Library
System, University of Pittsburgh

4:00 p.m. - 5:30 p.m.

Business Meetings

Art Documentation Editors - Benedum
Stephanie Sigala and Betsy Peck Learned

Awards Committee - Chartiers
Lynette Korenic

Gerd Muesham Award Committee - Traders
Jennifer Moldwin

Membership Committee - Rivers
Katherine Poole

North American Relations Committee - Brigade
Anita Gilden Carrico

Standards Committee - Kings Plaza
David Austin

Technology Committee - Kings Terrace
Paula Hardin

Travel Awards Committee - Allegheny
Edward Goodman

5:30 p.m. - 7:00 p.m.

Business Meetings

Cataloging Advisory Committee - Chartiers
Daniel Starr

Collection Development Committee - Traders
Ann Whiteside

Diversity Committee - Rivers
Claudia Hill

International Relations Committee - Brigade
Daphne Dufresne

Professional Development Committee - Benedum
Tom Greives

Public Policy Committee - Kings Plaza
Roger Lawson

Research Committee - Kings Terrace
Jeffrey Weidman

Visual Resources Advisory Committee - Allegheny
Leigh Gates

7:30 p.m. - 9:30 p.m.

OPENING PLENARY SESSION: Pittsburgh Art and Architecture - Kings Garden North and South

Moderator: Ray Anne Lockard, Frick Fine Arts Library,
University of Pittsburgh

Pittsburgh offers a rich array of architecture including Philip
Johnson's PPG Plaza, H.H. Richardson's Allegheny County
Courthouse, as well as historic buildings by local architects—



Benno Janssen's La Tourelle, the weekday home of the Edgar J. Kaufmann, Sr. family, and Henry Hornbostel's Carnegie-Mellon University campus. In addition, the city is full of important art works ranging from such regional artists as Aaron Gorson to 1960s cultural icon Andy Warhol. Mike Eversmeyer and Barbara Jones will present a survey of the art and architecture that conference attendees will view during their stay in Pittsburgh.

Speakers: Mike Eversmeyer, AIA, Perkins Eastman Architects, Pittsburgh, "Pittsburgh Architecture"

Mr. Eversmeyer will describe the development and character of Pittsburgh's architecture from an historical perspective, from its beginnings with the oldest surviving structure in Pittsburgh, the Blockhouse, to today. He will show how Pittsburgh's history can be discerned through surviving elements of its built environment. The succession of architectural styles will also be discussed, with the effects of various personal and social forces on Pittsburgh's architecture as a major subtext.

Barbara Jones, Curator, Westmoreland Museum of American Art, "Valley of Work: Scenes of Industry"

Highlighting paintings and works on paper, Dr. Barbara Jones will discuss artworks in the museum's collection that illustrate the impact of industry - primarily coal and steel - on Pittsburgh and the surrounding area during the 19th and early decades of the 20th century. The power and glory of the mines and mills have been a source of visual fascination and inspiration to artists for decades and the decline of industry in recent years is currently being documented by contemporary artists as well. Artists including Everett Wamer, Joseph Pennell, Aaron Harry Gorson, Ernest Lawson, and Joanna Hailman, among others will be discussed.

9:30 p.m. - 11:00 p.m.

Welcome Party - Ballroom 3

Generously sponsored by: ARLIS/NA Central Plains, Delaware Valley, Midstates, Montreal/Ottawa/Quebec, Mountain West, New England, New York, Northern California, Northwest, Ohio Valley, Ontario, Southern California, Texas-Mexico, and Western New York Chapters.

Join your colleagues for refreshments and lively conversation. We take special pleasure in welcoming all new members, first time conference attendees, international attendees and colleagues from Latin America.

9:30 p.m. - 11:00 p.m.

Serials Swap I - Kings Plaza

Coordinator: Gisele Guay, Head of Serials, Canadian Centre for Architecture Library

(The Serials Swap is open to all ARLIS/NA members who wish to exchange duplicate issues of periodicals. Bring lists of your duplicate and missing issues.)

saturday tours

Tour 5

Fallingwater and Kentuck Knob with Sculpture Garden

8:00 a.m. - 6:30 p.m.

Bus will depart from the Liberty Ave. entrance at the Hilton

See Friday Tour 1 for details.

Limit: 45 people

Price: \$125

Tour 6**Grant Street Walking Tour****9:00 a.m. - 11:00 a.m.****Meet at the ARLIS/NA Registration Desk**

Limit: 44 people

Price: \$15

The Pittsburgh History and Landmarks Foundation will lead us on a walking tour of Grant Street, one of Pittsburgh's most important downtown streets. Primarily residential in the early 1800s, Grant Street began to change with the construction of Henry Hobson Richardson's renowned Allegheny County Courthouse in 1884. The tour will also include the following architectural designs: the Frick Building with its marble lobby, mahogany telephone booths and La Farge window (Daniel Burnham, 1901), the Flemish-Gothic style Union Trust Building (Frederick J. Osterling, 1915-17), the William Penn Hotel (Janssen and Abbott, 1914-16), the Koppers Building with its Art Deco interior (Graham, Anderson, Probst and White, 1928) and the USX Building (Harrison and Abramovitz, 1968-1970). Wear comfortable walking shoes.

This tour is wheelchair accessible.

Tour 7**Fourth Avenue Walking Tour****9:00 a.m. - 11:00 a.m.****Meet at the ARLIS/NA Registration Desk**

Limit: 45 people

Price: \$15

Fourth Avenue in downtown Pittsburgh was part of the original city as it was first planned by George Woods and Thomas Vickroy in 1784. Pittsburgh History and Landmarks Foundation will lead us on a walking tour of this interesting street that was the heart of the city's financial district during the 19th century. Buildings include: the Greek Revival Burke's Building (John Chislett, 1836), the Classical Benedum-Trees Building (Thomas H. Scott, 1905), the Arrott Building (Frederick J. Osterling, 1928), Pittsburgh National Bank (Alden and Harlow, 1901-02), the Engineer's Society Doric Temple (Daniel H. Burnham, 1898), the Baroque Dollar Savings Bank (Isaac H. Hobbs, 1868-70), the Romanesque Times Building (Frederick J. Osterling, 1892) and others. Wear comfortable shoes.

This tour is wheelchair accessible.

Tour 8**Frick Art and Historical Center****1:00 p.m. - 4:00 p.m.****Bus will depart from the Liberty Ave. entrance at the Hilton**

This tour will be repeated on Wednesday, March 22

Limit: 45 people

Price: \$25

Travel back in time at the Frick Art and Historical Center, a six-acre complex of museums and turn-of-the-century buildings. The Center is one of many legacies left by Miss Helen Clay Frick, founder of the famed Frick Art Reference Library in New York and the Frick Fine Arts Library at the University of Pittsburgh. Miss



Frick, daughter of Pittsburgh industrialist Henry Clay Frick and his wife, the former Adelaide Childs, grew up on her family's estate in the rolling hills of Pittsburgh's fashionable East End.

Visitors are offered a magnificent view of life during the Gilded Age as they tour Clayton, the Frick family mansion. More than a tour of Victorian architecture and interior decoration, the visitor may also view early art works purchased by Henry Clay Frick as well as clothing, toys and personal accouterments of the period.

The Frick Art Museum, opened by Miss Helen Clay Frick in 1970 to house her private collections now also presents traveling exhibitions for public enjoyment. Shown during our visit will be *Drawn in the Light: Paintings by Jean-Francois Millet*. While touring the Frick Art and Historical Center, one may also visit the family greenhouse. In addition, one may also visit the Car and Carriage Museum where Howard Heinz's 1898 Panhard sits side-by-side with some of Pittsburgh's finest antique automobiles, including a rare 1909 Mercedes and a luxurious Rolls Royce Silver Ghost.

The Cafe at the Frick was cited in the June 1996 issue of *Gourmet Magazine* for its dazzling desserts and was honored by *Pittsburgh Magazine* in 1998 and 1999 as "Best Place for Lunch" in Pittsburgh. While our group won't be on the Frick grounds for lunch, there will be time for visitors to sip high tea on their own, served daily between 3:00 p.m. and 5:30 p.m.

This tour is wheelchair accessible.

Tour 9**The Andy Warhol Museum and the Mattress Factory****1:00 p.m. - 4:00 p.m.****Bus will depart from the Liberty Ave. entrance at the Hilton**

Limit: 45 people

Price: \$30

Even though Andy Warhol died in 1987, work by this Pittsburgh native, continues to reflect our changing times. Artist, filmmaker, painter, collector, music producer, commercial designer and illustrator, author, magazine publisher, fashion model You name it, Andy Warhol did it! This museum, the largest ever dedicated to the work of a single artist, presents the visitor with than 500 works of art and extensive displays of related archival material that is shown together, offering an integrated presentation of the development of Warhol's work with emphasis on specific thematic concerns.

The Andy Warhol Museum also offers daily exhibition screenings of Warhol's films and videos. In the Film Gallery, selected silent films from the 1960s, which have been transferred to video disc, are continuously shown adjacent to Warhol's paintings and other works of the period.

This tour will include a brief visit to The Andy Warhol Museum Archives Study Center. Famous for its collection of Andy Warhol's Time Capsules, the Center is devoted to preserving, collecting and making available to scholars, historical documentation of Warhol's life and work.

While we will only catch a glimpse of Warhol's "Factory" in the Warhol Museum's ambience, we will see a real factory on our



Tour 10

next tour stop. The Mattress Factory, located in a reclaimed industrial building, is a museum of contemporary art that commissions, exhibits and collects site-specific installations. The Mattress Factory is one of few museums of its kind anywhere providing living and working space to artists from around the world as they create new installations in residency. Featured artists have included James Turrell, Greer Lankton, Kiki Smith, Michael Tracy and others. The special exhibition during our visit will be *New Installations by Asian Artists in Residence: Japan, Korea, Peoples Republic of China, Taiwan, Thailand*. In addition, the evolving garden installation (1993) by artist Winifred Lutz spans three levels, descending 10' below ground, the visitor also moves through a three-dimensional audio-installation by German sound artist Rolf Julius.

This tour is wheelchair accessible.

A Pilgrimage to Ethnic Churches

1:00 p.m. - 5:30 p.m.

Bus will depart from the Liberty Ave. entrance at the Hilton

Limit: 45

Price: \$60

Join Dr. Arnold Klukas, architectural historian, as we journey to five sites in ethnic neighborhoods that promise to delight the eye and give you a taste of our city's diversity. Many of the sites are historic landmarks.

First, we will visit St. Nicholas Roman Catholic Church (Frederick C. Sauer, 1900) in Millvale where we will see over twenty murals painted by Croatian artists, Maximilian Vanka and Jocko Knezevich.

We will then travel across the Allegheny River to visit one of three Pittsburgh churches designed by Ralph Adams Cram, America's Gothic Revival architect. In designing the East Liberty Presbyterian Church, Cram was given the opportunity by Richard Beatty Mellon to design the most elaborate ecclesiastical building of his career. Built during the peak of the Great Depression, East Liberty Presbyterian Church is a sacred space built on a grand scale and filled with magnificent stained glass by more than five American glasshouses.

Next, we will enter the realm of the Jewish sacred tradition when we visit Temple Rodef Shalom. Built by Pittsburgh architect, Henry Hornbostel between 1906 and 1907, Temple Rodef Shalom is often cited as one of the best examples of temple design in the country. One of the temple's most spectacular visions is provided by the Guastavino tile vault with a large central skylight. The temple is on the *National Register of Historic Places*.

Traveling into the Oakland cultural district we will visit St. Nicholas Greek Orthodox Church (Struthers and Hannah, 1904). Visitors are in for a surprise when they enter the Grecian Ionic facade and come face-to-face with an interior rich with paintings and mosaics, including a spectacular iconostasis. St. Nicholas Greek Orthodox Church is also an historic landmark.

The tour will return to the North side of the Allegheny River to



sunday, march 19, 2000

7:00 a.m. - 8:00 a.m.

7:30 a.m. - 5:00 p.m.

8:00 a.m. - 9:00 p.m.

8:00 a.m. - 9:00 a.m.

8:00 a.m. - 12:00 p.m.

8:00 a.m. - 6:00 p.m.

9:00 a.m. - 10:30 a.m.

visit Emmanuel Episcopal Church by Henry Hobson Richardson (1885-86). Locals call it the "Bake Oven Church" because it was constructed of intricately designed brickwork and takes the unique form of a severe gable set low on an arched base.

Our tour will end with a trip up Troy Hill to visit St. Anthony of Padua Shrine (1880, towers, 1890-91), one of the most unique sites that any city in the United States has to offer.

This tour is wheelchair accessible.

Yoga on the Three Rivers - Brigade

Presented by BJ Irvine. Wake up your body and mind with a series of gentle stretches based on Yoga and related systems of exercise. Practice includes both deep breathing and positions of physical ease (Yoga asanas or postures). Those who have not had prior Yoga classes, as well as more experienced practitioners, can enjoy these morning sessions.

REGISTRATION DESK OPEN

L.A. Conference Planning Committee Meeting - Board

Round Table Meetings

Decorative Arts Round Table - Rivers
Elizabeth Gulacy and Linda Seckelson

Gay and Lesbian Interests Round Table - Kings Terrace
Tom Young

Indigenous Art and Culture Round Table - Chartiers
Robert Beebe

New Art Round Table - Traders
Henrietta Zielinski

Serials Round Table - Allegheny
Evalyn Stone

Space Planners Round Table - Heinz
Ursula Kolmstetter

Women and Art Round Table - Kings Plaza
Susan Nurse

Discussion Group

BHA Users Group - Benedum
Michael Rinehart, Editor in Chief, *Bibliography of the History of Art*

Accreditation Standards - Duquesne
Janine Henri

Exhibits Setup - Ballroom 1

INTERNET ROOM OPEN - Stanwix

Division Meetings

Academic Library Division - Kings Garden North
Tom Riedel

Art and Design School Library Division - Le Bateau
Laurie Whitehill Chong



10:30 a.m. - 11:30 a.m.

Museum Library Division - Ballroom 3
Nancy Simon

Public Library Division - Brigade
Jeffrey Stephens

Visual Resources Division - Benedum
Marty Stein

Discussion Groups

Interlibrary Loan - Duquesne
Nancy Spiegel

Museum Library Directors - Ballroom 3
Jeannette Dixon

Visual Resources Software Users Discussion Group - Brigade
Trudy Jacoby

10:30 a.m. - 12:00 p.m.

Section Meetings

Architecture Section - Kings Garden North
Janine Henri

Cataloging Section - Kings Garden South
Carol Pardo and Emily Roth

Reference and Information Services Section - Le Bateau
Naomi Niles

12:00 p.m. - 1:30 p.m.

Exhibits Opening Reception - Ballroom 1

Generously Sponsored by: Grove's Dictionaries, Inc.

12:00 p.m. - 6:00 p.m.

EXHIBIT HALL OPEN - Ballroom 1

1:00 p.m. - 2:30 p.m.

ASK ARLIS

Ask ARLIS 1

Planning for the Future: The ARLIS/NA Strategic Plan - Ballroom 4

Moderators: Jane Carlin, University of Cincinnati

Katherine Martinez, Harvard University

Sponsor: ARLIS/NA Strategic Planning Task Force, ARLIS/NA Executive Board

The ARLIS/NA Strategic Planning Task Force has been hard at work this past year, communicating with individual members, committee chairs, moderators, and other leaders within the Society as well as affiliated organizations. The Task Force has developed a new set of action plans that will lead the Society into the new century. Take this opportunity to talk with members of the Task Force about the Strategic Plan and the action steps for our Society. This is your opportunity to influence the future of ARLIS/NA!

Speakers: Task Force Members, Ross Day, Carol Graney, Rosemary Haddad, Lynette Korenic, Ann Whiteside

2:00 p.m. - 4:00 p.m.

PANEL SESSIONS

Session 1

Fashioning a New World: The Kaufmann - Wright Collaboration in Pittsburgh - Ballroom 3

Moderator: Ray Anne Lockard

Sponsor: ARLIS/NA Ohio Valley Chapter



Scholars are currently conducting a major re-examination of Frank Lloyd Wright's contribution to 20th century architecture, one example of which is the recent exhibition at the Heinz Architectural Center entitled *Merchant Prince and Master Builder*. This session will examine the extraordinary relationship among Edgar J. Kaufmann, Sr. (patron of Fallingwater), Edgar J. Kaufmann, jr. (museum curator and professor of architectural history) and Frank Lloyd Wright. It is a relationship that has only recently begun to be explored.

Speakers: Dr. Richard Cleary, Professor of Architecture, University of Texas, Austin, "Merchant Prince and Master Builder: Edgar J. Kaufmann and Frank Lloyd Wright."

Norman R. Weiss, Professor, Columbia University and Stephen E. Gottlieb, Wasa Architects and Engineers, "Waterproofing Fallingwater: Present Strategies for a New Century."

Session 2

Women Leaders in the Art Pottery Industry: Ohio and Beyond - Kings Garden South

Moderator: Susan Nurse, Visual Resource Coordinator, Memorial Art Gallery, Rochester, New York

Sponsors: Women and Art Round Table
Decorative Arts Round Table

This session will focus attention on the often-overlooked leadership contributions of women in the art pottery field. Historically, the position occupied by women in art pottery was simply as china painters or at the most, decorators. The design, manufacture, and certainly the organization and ownership of potteries was always assumed to be male. This is far from the case as speakers in this session will demonstrate. Women's leadership in the art pottery industry began with the Arts & Crafts Movement of the 1870s continuing well into the 20th century and extending into the western states, as the country expanded its boundaries.

Speakers: Mary Sayre Haverstock, Director, Ohio Artist Project, Oberlin, Ohio, "The Fair Toilers: Cincinnati Women and the Art Pottery Phenomenon 1876-1900"

Joan Witt, Historian, East Liverpool, Ohio, "History of Women in the East Liverpool Pottery Industry into the 20th Century"

Lynette Korenic, University of Wisconsin, Madison, "The Inspirational Susan Frackelton: Milwaukee Ceramicist and Inventor"

Mark Bassett, Ph.D., Author of *Introducing Roseville Pottery*, "Edris Eckhardt-Art for Education, The Ceramic Sculpture of Cleveland's WPA Project"

Session 3

CORE Foundations for the Vision of the Future: The History of Subject Indexing of Visual Materials - Benedum

Moderator: Eileen Fry, Indiana University

Sponsor: Visual Resources Division

Subject analysis in the online environment is one of the most challenging, but necessary, aspects of providing access to visual materials that face today's art librarians and visual resources professionals. Great advances have been made in the past few



years to provide consistent and authoritative information for images using new models and theories.

Collaborative projects such as the Visual Resources Association (VRA) Core Categories and VISION have created a dialogue among visual materials catalogers that brings us closer to shared cataloging. The dream of shared cataloging for visual materials is not a new one, however, these new projects have origins in earlier projects that brought the questions and concerns dealing with subject analysis to the attention of the art library and visual resources community. Projects and publications such as the Belmont Conference, the Image Access Society, *ICONCLASS*, the *Index to Christian Art*, and the *Art and Architecture Thesaurus* have all provided much needed standardization and created discussion about an area which is full of conundrums and pitfalls. Taking as its inspiration the theme of this conference, *Links to the Past, Bridges to the Future*, this session will look back at the history of providing subject access to visual materials from the people who made these projects possible. As a "bridge to the future," this session will provide the history of the processes discussed in Session 7, "The Construct of Indexing."

Speakers: TBA

ASK ARLIS

The Visual Resources Professional in the 21st Century - Kings Garden North

Moderator: Margaret N. Webster, Director, Knight Visual Resources Facility, Cornell University

Sponsor: Visual Resources Division

The Visual Resources Association (VRA) together with ARLIS/NA sponsored a recent *Visual Resources Professional Status Survey*. The tabulation of this document, which was distributed at the end of 1998 to all Visual Resources Division members, and to the entire membership of VRA, provides us with new and updated information about the visual resources profession. Each panelist will present a short statement on the following topics with the remaining time devoted to discussion generated by questions from the audience.

- Overview of the survey process
- Implications to the profession of a "graying population"
- Salary implications for the profession
- Feasibility of reissuing this survey instrument periodically to gather a body of statistical data over time.
- The future of the visual resources profession based on the statistical evidence of the survey

Speakers: John Taormina, Chief Curator, Visual Resources Collection, Department of the History of Art, University of Michigan

3:45 p.m. - 5:15 p.m.

Ask ARLIS 2



Ask ARLIS 3

Lynda White, Management Information Services, Alderman Library, University of Virginia

Susan Jane Williams, Visual Resources Curator, Visual Resources Collection, Arts Library, Yale University

Carol H. Graney, Director of University Libraries, University of the Arts, Philadelphia

Access to Access: Library Building Accessibility - Le Bateau

Moderators: Claudia Hill, Art and Architecture Cataloger, Columbia University Libraries
Gladys Markoff-Sotomayor, Art and Architecture Cataloger, Columbia University Libraries

Sponsors: Architecture Section
Public Library Division
Space Planners Round Table
Diversity Committee

Access to information for all is our goal as librarians. Accessible facilities are key to providing access to library information. The *Americans with Disabilities Act (ADA)* ensures full and equal participation for persons with disabilities by giving civil rights protections to these individuals in employment, public accommodations, transportation, state and local government services, and telecommunications.

What does the ADA require in terms of accessible facilities? What problems do art and architecture librarians face in bringing our facilities, whether landmarks or new buildings, museum, public or university libraries, into compliance with ADA? What creative solutions have librarians devised to assist in serving persons with disabilities?

The speakers in this session will give examples of issues they faced in creating barrier-free environments for individuals with physical disabilities and offer solutions for access and service.

Speakers: Joan W. Stein, President and CEO, Accessibility Development Associates, Inc.

Angela Giral, Director, Avery Architectural and Fine Arts Library, Columbia University

Milan Hughston, Chief of the Library and Museum Archives, The Museum of Modern Art

Stephen H. Van Dyck, Chief Librarian, Cooper-Hewitt Museum Library

4:00 p.m. - 5:00 p.m.

Exhibit Hall Coffee Break - Ballroom 1 Generously sponsored by: Erasmus Boekandel

Discussion Groups

Art and Design School Library Directors - Kings Plaza
Carol S. Terry

Cataloging Problems - Kings Terrace
Sherman Clarke

The Problem of Provenance - Duquesne
Lauren Lessing and Marcy Neth

Public Library - Traders
Carl Baker

4:00 p.m. - 5:00 p.m.

5:15 p.m. - 6:00 p.m.

Transportation to Convocation
Bus will depart from the Liberty Ave. entrance at the Hilton
CONVOCAATION — CARNEGIE MUSIC HALL

6:30 p.m. - 8:00 p.m.

Generously Supported by: The Carnegie Museum of Art
 The Convocation is located in the Carnegie Music Hall built in 1907 by Alden and Harlow and the first home of the Pittsburgh Symphony Orchestra. The Music Hall's setting is reminiscent of the grace and intimacy of an 18th century playhouse.

Welcome: Richard Armstrong, Director, Carnegie Museum of Art

Speaker: Thomas Sokolowski, Director, Andy Warhol Museum

8:00 p.m. - Midnight

ARS LIBRI PARTY — CARNEGIE MUSIC HALL FOYER

Generously Sponsored by: Ars Libri, Ltd.

Black-Tie/Festive Dress

Join us for an elegant reception with food and refreshments while we celebrate ARLIS/NA in the Year 2000!

The Music Hall Foyer of the Carnegie Museum is one of the most splendid examples of Edwardian display in America. Its 24 marble pillars carry an ornate gilded balcony that reaches toward a magnificent plaster and gold leaf ceiling. Emulating the Paris Opera, the foyer of the Carnegie Music Hall is sheathed in marbles imported from six countries.

The Carnegie Museum of Art has generously offered access to the galleries showing the last *Carnegie International* as well as the Heinz Architectural Center. The museum gift shop will be open.

10:30 p.m. - Midnight

Transportation to the Hilton Pittsburgh

Last bus departs at 12:00 Midnight.

monday, march 20, 2000

7:00 a.m. - 8:00 a.m.

Yoga on the Three Rivers - Brigade
 See Sunday schedule for description

8:00 a.m. - 5:00 p.m.

REGISTRATION DESK OPEN - Ballroom Foyer

8:00 a.m. - 5:00 p.m.

EXHIBIT HALL OPEN - Ballroom 1

8:00 a.m. - 9:00 a.m.

Exhibits Opening Breakfast in Exhibit Hall - Ballroom 1
Generously Sponsored by: John Benjamins Publishing

8:00 a.m. - 6:00 p.m.

INTERNET ROOM OPEN - Stanwix

8:00 a.m. - 9:00 a.m.

Discussion Groups

Avery Users Group - Kings Terrace
 Edward Goodman

SCIPIO (Sales Cataloging Index Project Input On-Line (RLIN)
 Users Group - Rivers
 Deborah Kempe

8:00 a.m. - 9:30 a.m.

Serials Swap II - Chartiers

Coordinator: Gisele Guay, Head of Serials, Canadian Centre for Architecture Library

(See description for Serials Swap I, Saturday)

9:00 a.m. - 11:00 a.m.

Session 4

PANEL SESSIONS

Taming the Untamable: Art Related Indexes in a Changing Environment - Ballroom 3

Moderators: Alexandra de Luise, Art Librarian, Queens College/CUNY; Tom Greives, Reference Librarian/Fine Arts Bibliographer, Arizona State University Libraries

Sponsors: Reference and Information Services Section
 Serials Round Table

Art-related indexes and art reference tools are in a state of transition. Evolving formats, changing vocabularies, new searching capabilities, as well as retrospective conversion of older records and other added enhancements, are changing their scope and accessibility. What are the latest developments in the ever-changing medium?

The *Avery Index* is currently converting paper records to electronic form, making available online citations from the late 19th century to the 1970s. Current activities by the *Bibliography of the History of Art*, which, along with *Avery Index*, is a program of the J. Paul Getty Trust Research Institute for the History of Art and the Humanities, will be discussed. The Art Index on the Web will be compared to The Avery Index and BHA, particularly the availability of full text articles and timeliness of indexing. DAAI will be considered with relation to its origin and history; how it developed over the years; the impact of new technologies, and how it keeps up with increasing user demands. The response to the question, "If I already have the print version, do I really need the online version?" will be answered, with comparisons of the advantages and disadvantages of the online and print versions of *Dyabola*, *The Dictionary of Art* and *Art Bibliographies Modern*. In addition, the latest news regarding updates and changes on the horizon for these indexes will be considered. The indexes will be demonstrated and user guides will be made available.

Speakers: Carolyn DeLuca, Electronic Resources Librarian, Hazen Center for Electronic Information Resources, Thomas J. Watson Library, Metropolitan Museum of Art, "Comparisons of Print and Online Versions of *Dyabola*, *The Dictionary of Art*, and *ArtBibliographies Modern*"

Chris Mees, Editor, *Design and Applied Arts Index*, "So You Thought You'd Escape from Librarianship and Start a Journal Index: One Man's Experience (The Design and Applied Arts Index)"

Barbara Sykes-Austin, Indexer and Reference Librarian, Avery Architectural and Fine Arts Library, Columbia University, "Just When You Think You Understand It, It All Changes: Using the Avery Index, BHA, and the Art Index in the New World Order of Information Access"

Session 5

Merging Print and Digital Collections Through the OhioLINK Multimedia Program - Ballroom 4

Moderator: Mark Pompelia, Curator of Visual Resources, Department of Art and Art History, Rice University

Sponsors: ARLIS/NA Ohio Valley Chapter, VRA Great Lakes Chapter



9:15 a.m. - 10:45 a.m.
Ask ARLIS 4

The OhioLINK (Ohio Library and Information Network) is a consortium of Ohio's college and university libraries and the State Library of Ohio. OhioLINK services extend well beyond those of traditional consortia, such as online borrowing, management of a central catalog, and sharing of electronic databases, and the development and management of digital image collections. This session will focus on the development of the OhioLINK Digital Media Center, its services and resources, and will highlight collaborative partnerships throughout Ohio, management of contracts for purchase of commercially available digital image sets, and the impact these services have had on the academic community.

Speakers: Charly Bauer, Assistant Director of Library Systems, Digital Media, OhioLINK, "OhioLINK's Digital Media Center – A Consortial Model for Digital Content Creation and Dissemination"

John Taormina, Chief Curator, Visual Resource Collections, University of Michigan, "The Visual Resources Specialist and the OhioLINK Digital Media Center: Implications for the Future of the Profession"

Jennifer Trant, Director of AMICO, AMICO and OhioLINK – "Building Cooperative Partnerships for the 21st Century"

Adrienne Varady, Visual Resources Curator, DAAP Library, University of Cincinnati, "Digitizing Cincinnati – Practically Speaking"

ASK ARLIS

Creative Multiples: Artists' Books as Teaching Tools - Kings Garden North and South

Moderator: Amanda Bowen, Collection Management Librarian, Fine Arts Library, Harvard University

Sponsors: Art & Design School Library Division
Collection Development Committee

Over the decades, art libraries have developed and continue to acquire extensive collections of artists' books. These materials are often sought out to document art movements of the 20th century and to compliment other printed holdings on the art of the period. In each collection, the materials constitute a departure from our traditional collections. We select them differently, with aesthetics and personal taste playing a large part, house them differently (due to format, materials or fragility) and catalog them differently, often with additional notes and physical description. While these books are some of the most interesting and original materials in our collections, restricted access can prevent our users from seeing and using them.

For art students looking for visual aids, new forms and accessible ways to present their ideas, artists' books can present a welcome range of possibilities. The book form is, at this point, simply another acceptable medium in which to work. Numerous colleagues in art and design school libraries give regular presentations to classes and provide access to these books in order to help students develop ideas. From formal lectures on the history of book arts and artists' books to one-on-one consultations with students on materials, structures, bindings, practical techniques and content, librarians provide students with the needed resources and information to experiment with the form.



11:15 a.m. - 12:30 p.m.
12:30 p.m. - 2:15 p.m.

2:30 p.m. - 4:30 p.m.
Session 6

This session will present three librarians from art and design libraries that use artists' books as an active part of their teaching responsibilities. We will use slides and a web demonstration to show some of the books and the ways they are presented. Short presentations by the speakers will be followed by discussion. As time permits, we may be able to discuss other topics related to use, access and storage.

Speakers: Laurie Whitehill Chong, Readers Services Librarian, Rhode Island School of Design

Maureen Dawley, Art Librarian, Carnegie Mellon University

Anne Dorothee Boehme, Librarian/Curator, Joan Flasch Artists' Book Collection, School of the Art Institute of Chicago

ARLIS/NA MEMBERSHIP MEETING - Ballroom 3

**MEMBERSHIP LUNCHEON AND KEYNOTE
SPEAKER - Ballroom 2**

Speaker generously Sponsored by: H.W. Wilson Company

Speaker: Franklin K. Toker, "Two Fallingwaters: One Over Bear Run, The Other in Libraries and Archives"

President Emeritus of the Society of Architectural Historians, Franklin Toker is a Professor of the History of Art and Architecture at the University of Pittsburgh, where he teaches urban history and the history of Medieval and American architecture. He was born in Montreal in 1944 to a family that has lived for seven generations in French Canada. Dr. Toker received a degree in art history from McGill University, as well as degrees from Oberlin College and Harvard University.

Dr. Toker's books include *Pittsburgh: An Urban Portrait* (1986, 1995); and *The Church of Notre-Dame in Montreal* (1970), a Hitchcock Award winner.

PANEL SESSIONS

Search Tools and Strategies for Web Sites - Ballroom 3

Moderator: Amy Lucker, Librarian, Museum of Fine Arts, Boston.

Sponsor: Technology Committee

Today's Web sites are dynamic, sophisticated, and information rich. Database backed Web pages with search tools and strategies are fundamental to successful Web sites. Librarians can use new tools to develop more sophisticated Web sites without having to be programmers. This session will address database and site design issues for the implementation of search engines with database backed Web sites.

Speakers: Lee Sorensen, Bibliographer for Art and Reference Librarian, Lilly Library, Duke University, "Introduction to Implementing Search Tools and Strategies for Web Sites"

Eileen Quam, Foundations Project Coordinator and Metadata Specialist, State of Minnesota, "Using Dublin Core Metadata with the Ultraseek Server Content Classification Engine"

Paula Hardin, Visual Resources Library, Louisiana State University

Session 7

The Construct of Indexing: Thought Processes in Subject Analysis - Ballroom 4

Moderator: Ann Whiteside, Visual Resources Librarian, Harvard Design School, Harvard University

Sponsor: Cataloging Section
Visual Resources Division

The topic of subject indexing in visual collections creates considerable discussion among visual resources curators. For those that do provide subject indexing, approaches vary by the size and type of collection, by curator-faculty relations, the online environment, and a host of other variables. Whether the issues, thought processes, and informational patterns involved in subject indexing of visual materials are the same as those involved in subject indexing of textual materials is not known at this time.

Using the case study method, this session will explore item-level subject indexing procedures in a variety of visual document types in an effort to bridge text and image subject indexing domains. We will examine art history and architectural images in a relational database environment as well as archival materials using EAD (Encoded Archival Description) protocol.

Issues which impact the indexing process include: collection size; amount already indexed and the perception of redundancy; object size and prominence in the visual document; database assistance: automatic, required, and optional terms; controlled vocabularies, authority lists, look-up tables, local terminology, and indexing guidelines; quality control procedures and post-indexing evaluation; the cataloger/indexer's knowledge of the depicted material.

Respondent: Maryly Snow, Librarian, Architecture Slide Library, Department of Architecture, University of California, Berkeley

Speakers: Mary Elings, Electronic Publishing Assistant, Pictorial Projects, Bancroft Library, University of California, Berkeley, "Item Level Subject Indexing for EAD Finding Aids"

Caroline Beebe, Head, Digital Libraries Initiative Department, North Carolina State University Libraries, "Indexing Images for Multiple Needs"

Linda McRae, Slide Librarian, University of South Florida, "The VISION Database: A Case Study in Image Indexing"

3:00 p.m. - 4:30 p.m.

Ask ARLIS 5**ASK ARLIS****From Collaboration to Consortia:
Developing Partnerships
Kings Garden North and South**

Moderators: Jill Patrick, Director of Library and AV Services, Dorothy H. Hoover Library, Ontario College of Art & Design, Toronto Ontario; Jill Conner, Gallery Director, Brand Library, Glendale, California

Sponsors: Art & Design School Library Division
ARLIS/Canada
Public Library Division



Art and design libraries are investigating and participating in a range of mutually-beneficial partnerships - from collaborations to full-fledged consortia - to improve outreach services, obtain grants for research and development projects, establish creative programs, and provide improved and more economical access to automated systems, collections, electronic resources, and services.

This Ask ARLIS will present a variety of case studies, ranging from unique one-time projects to on-going consortial partnerships. Panelists will discuss planning, start-up, development and maintenance, how alliances are identified and formed, how needs are established and met, how goals and priorities are set, how consensus is reached, how decisions are made, how funding is obtained, and how success is measured.

Contributors: Jodee Fenton, Coordinator, Fine and Performing Arts Department, Seattle Public Library "The Public Library and the Art Museum: What Does Partnership Really Mean?"

James A. Findlay, Librarian, Broward County Library, Ft. Lauderdale, Bienes Center for Literary Arts, "Collaborative Exhibitions as Fundraising and Collection Development Tools"

Laura Graveline, Library Director, Maine College of Art, Portland "Collaborative Ventures, Collaborative Gains"

Ilga Leja, Director of Library Services, Nova Scotia College of Art & Design, Halifax "Consensus and Collaboration: Serving the Art and Design Community through a University Library Consortium"

Sonja Staum-Kuniej, Associate Librarian, Herron Library Team Leader, Indiana University-Purdue University, Indianapolis, "Libraries, Schools, and Museums: Merging Cross-Disciplinary K-12 Instructional Activities Through Art and Technology"

4:30 p.m. - 6:30 p.m.

Session 8**PANEL SESSIONS****Real or Not: Virtual Reading-Virtual Artists' Books - Ballroom 3**

Moderator: Henrietta Zielinski, Bibliographer, John Flaxman Library, School of the Art Institute of Chicago

Sponsor: New Art Round Table

Virtual Artists' Books are defined as works created by an artist using an Internet based medium specifically as an artistic tool not as a means of documentation but as the main component for creativity. This program links the New Art Round Table's past which grew out of a discussion of the then new genre of artists' books as a new format for producing art, and its future, technology.

The panel will discuss whether or not virtual artists' books are really artists' books. Are they a new form or genre? What are the concerns of archiving or collecting the data related to virtual material; keeping URL addresses that may become obsolete; printing virtual books out page by page as documents to be filed; changing the format and assuming collecting responsibilities. If the original medium is a time element and if its intent is time and space specific, how will this affect viewing and audience participation? What is the artists' intent when using a virtual medium? What are the limitations of virtual art: are the



roles of impermanency and interactivity with the audience assumed when creating these works? How does the virtual book affect the death of the real?

Speakers: Doro Boehme, School of the Art Institute of Chicago, Special Collections Librarian, Joan Flasch Artists Book Collection, "The Concept of the Artists' Book"

Anne Britton, Librarian and Cataloger, Franklin Furnace Archive, Museum of Modern Art, "Cataloging and Archiving Virtual Material"

Simon Anderson, Chicago Historian, Critic, and Curator of Artists' Book Material, School of the Art Institute of Chicago, "The Current State of Artists' Books."

Session 9

Collecting Time: Examining Andy Warhol's Time Capsules - Ballroom 4

Moderators: Edward Goodman, General Editor, Avery Architecture and Fine Arts Library, Columbia University

Clayton Kirking, Director, Adam and Sophie Gimbel Design Library, Parsons School of Design

Andy Warhol was unique in every way. And that includes the way in which he archived his life. His "precious garbage" – everything from correspondence, shopping receipts, invitations, cookies, lipstick, shoes, corsets, you name it – was simply swept off his desk into a cardboard box, labeled and sealed. Thousands of Andy's Time Capsules are in the collection of the Andy Warhol Museum's Archives and Study Center. This session will examine Andy Warhol as an archivist, the history of his time capsules, and how researchers use them. The Director, and the Archivist of the Andy Warhol Museum have agreed to bring an unopened Time Capsule with them to our session. This is the first time such a thing has been done outside the museum. A few members of the audience will be chosen to assist with the opening of the Time Capsule during the session.

Sponsor: Gay and Lesbian Interests Round Table (GLIRT)

Speakers: Dr. Thomas Sokolowski, Director, The Andy Warhol Museum - "Introducing Andy"

John Smith, Archivist, Archives and Study Center, The Andy Warhol Museum - "Saving Time: Andy Warhol's Time Capsules"

Dr. Kirk Savage, Professor of Art History, University of Pittsburgh - "Using Andy Warhol's Archives as a Teaching Tool"

Session 10

Wrought of Steel and Philanthropy: The Forging of Andrew Carnegie's Cultural Legacy Kings Garden North and South

Moderator: Ray Anne Lockard, Head Librarian, Frick Fine Arts Library, University of Pittsburgh

Sponsors: Museum Library Division
Public Library Division

When Andrew Carnegie established his Carnegie Institute, the Carnegie International, and hundreds of libraries in the United



States and Canada at the end of the 19th century, he was following the advice he would soon articulate to fellow Gilded Age financiers in his book entitled *The Gospel of Wealth*. This session, examining events of major consequence to both the library profession and the art world, will highlight Carnegie's unprecedented cultural philanthropy.

Speakers: Robert Gangewere, Editor, *Carnegie Magazine*, "The Gospel According to Carnegie: A History of the Carnegie Institute"

Dr. Abigail Van Slyck, Director of Architectural Studies, Connecticut College and author of *Free to All: Carnegie Libraries and American Culture* (University of Chicago Press, 1995)

Dr. Kenneth Neal, Pittsburgh art historian and author of *A Wise Extravagance: The History of the Carnegie International Exhibitions, 1896-1901* (University of Pittsburgh Press, 1996)

EXHIBIT HALL RECEPTION AND SILENT AUCTION Ballroom 1

We invite you to a wine and cheese reception where you can spend time meeting with and talking to our many exhibitors. Bring your business cards and enjoy schmoozing with your favorite vendors and book dealers.

A silent auction, with proceeds benefiting the ARLIS/NA 25th Anniversary Scholarship Fund, will be held during the exhibit hall reception. Take part as both a donor and a bidder! See page 15 for details.

6:30 p.m. - 8:30 p.m.

8:30 p.m. - 10:00 p.m.

Serials Swap III - Chartiers

Coordinator: Gisele Guay, Head of Serials, Canadian Centre for Architecture Library

(See description for Serials Swap I, Saturday)

tuesday, march 21, 2000

7:00 a.m. - 8:00 a.m.

Yoga on the Three Rivers - Brigade
See Sunday schedule for description

8:00 a.m. - 10:00 a.m.

LEADERSHIP/CHAPTER OFFICERS' BREAKFAST Ballroom 2

Generously Sponsored by: F. A. Bennett, Inc.

8:00 a.m. - 12:00 p.m.

INTERNET ROOM OPEN - Stanwix

8:00 a.m. - 12:00 p.m.

EXHIBIT HALL OPEN - Ballroom 1

8:00 a.m. - 4:00 p.m.

REGISTRATION DESK OPEN - Ballroom Foyer

9:00 a.m. - 10:00 a.m.

Exhibit Hall Coffee Break - Ballroom 1

Generously Sponsored by: Innovative Interfaces, Inc.

10:00 a.m. - 12:00 p.m.

PANEL SESSIONS

Session 11

Glass in the Ohio Valley: Aspects of Material Culture and Decorative Arts, Past and Present - Ballroom 3

Moderators: Linda Seckelson, Head of Reader Services, Thomas J. Watson Library, Metropolitan Museum of Art; Elizabeth Gulacsy, Art Librarian, Scholes Library, New York State College of Ceramics

Sponsor: Decorative Arts Round Table



Pittsburgh and the surrounding area has been an important glass center since the end of the 18th century, when utility window glass and hollow ware were already being made. Presidents Monroe and Jackson both commissioned glass from a Pittsburgh manufacturer in the early 19th century, and in 1867, American glass manufacturers chose a Pittsburgh company to represent them at the Paris Exposition of 1867. This important glass-making tradition has continued to this day. In this session, three aspects of glass-making in the Pittsburgh area will be considered.

Speakers: Dr. James Measell, Associate Historian, Fenton Art Glass Company, Williamstown, WV, "Up and Down the Ohio Valley: A History of Glass Production in the Region"

Arnold Klukas, Ph.D., Art History; Rector, Grace Episcopal Church, Pittsburgh, "Light Amidst the Dark Satanic Mills: Stained Glass in Pittsburgh"

Amy Morgan, Director, Amy Morgan Glass Gallery, Pittsburgh, "The Studio Glass Movement in Pittsburgh: Contemporary Glass-Making and Collecting Trends"

Session 12

Still Codeless After All These Years: The History and Possible Future of Subject Cataloging in the Field of Art - Ballroom 4

Moderator: Alison Dickey, Assistant Dean, Palmer School of Library and Information Science, Long Island University

Sponsor: Cataloging Section

This session will look at the history and future of subject cataloging in the field of art. The central theme is the absence of a code for subject cataloging and the effect that it has had on the practice of cataloging art material. It was inspired by the session *Paradigm or Dinosaur?: The Future of Anglo-American Cataloging Rules* at the 27th Annual ARLIS/NA Conference where the value of the code for descriptive cataloging was highlighted. The papers given here will examine four topics: The history of subject cataloging in the absence of a code; Subject cataloging issues specific to art including controlled vocabularies and the Library of Congress Subject Subdivisions Conference, Airlie House, Virginia, 1991; The current and future role of the web in art subject cataloging; How the proposing of subject headings and SACO (Subject Authority Cooperative Program) work has changed in the electronic environment.

Speakers: Joseph Miller, Editor, *Sears List of Subject Headings*, The H.W. Wilson Company, "An Overview of Subject Cataloging and the Absence of a Code"

Trudi Olivetti, Senior Cataloger, National Gallery of Art, "1000 Words: Subject Cataloging for the Fine Arts"

Julia Wisniewski, Art Monographs Cataloger, University of Maryland Libraries, "Every Good Path: Proposing Subject Headings via Cowpath or Interstate"

Sherman Clarke, Head of Original Cataloging, New York University, Bobst Library, "Cataloging Works of Art with the Web in Mind"

10:15 a.m. - 11:45 a.m.

Ask ARLIS 6

ASK ARLIS

The Art Librarian in the 21st Century Kings Garden North and South

Moderator: B.J. Kish Irvine, Fine Arts Librarian, Fine Arts Library, Indiana University

Sponsors: Academic Division
Museum Division

As our libraries and our profession change to meet the demands of the 21st century, we must explore how we are preparing to meet the challenges we face. These challenges include increasing focus on international connections as the boundaries of our libraries are disappearing in the electronic age, the impact of automation on the design of our facilities, the services our libraries offer, and education for art librarianship.

Speakers: Carolyn DeLuca, Hazen Center for Electronic Information Resources, Thomas J. Watson Library, Metropolitan Museum of Art, "Preparing Museum Library Patrons for the 21st Century: Instruction in the Hazen Center"

Susan Craig, Art and Architecture Library, University of Kansas, "Designing the Art Library"

Thomas Greives, Reference Librarian/Fine Arts Bibliographer, Arizona State University Libraries, "A Novice's Perspective on Education for Art Librarianship"

Henry Pisciotta, Head, Arts and Special Collections, Carnegie Mellon University, "The Future of the Subject Specialist"

Canadian Members Meeting - Traders

SESSIONS

Lost and Found: The Problem of Provenance - Ballroom 3

Moderators: Lauren Lessing, Ryerson & Burnham Libraries, Art Institute of Chicago; Marcy Neth, Ryerson & Burnham Libraries, Art Institute of Chicago

Sponsor: Museum Division

Recently a number of prominent news stories have placed a spotlight on the issue of Nazi-confiscated art in museum collections. In December of 1998, the U.S. State Department released eleven principles to assist in resolving problems related to this issue. These principles echoed earlier resolutions by the American Association of Museum Directors to search out and identify confiscated works in their collections. As a result, many museums are now actively engaged in researching the provenance of artworks that were acquired during or after World War II.

This session is intended to discuss some of the issues and problems surrounding provenance research. We hope to bring together both sides of the provenance issue by engaging speakers who can address the institutional problems, such as museum research, as well as the individual problems such as recovery of looted art work.

12:00 noon - 1:30 p.m.

1:30 p.m. - 3:30 p.m.

Session 13



Session 14

Speakers: Jack Perry Brown, Director of Libraries, Ryerson-Burnham Libraries, Art Institute of Chicago

Evie T. Joselow, Ph.D., Research Chief, Commission for Art Recovery, New York

Nancy Yeide, Curator of Records, National Gallery of Art, Washington

Jennifer Tonkovich, Curatorial Assistant, The Pierpont Morgan Library

Acquisitions at the Millennium: Current Business Trends Ballroom 4

Moderator: Ann B. Abid, Head Librarian, Cleveland Museum of Art

Discussions among exhibitors and members at the 27th Annual ARLIS/NA Conference indicated that the business trends and operational procedures on both sides of the acquisitions transaction have changed over recent years. Vendors have to deal with online sales competition, a new currency in Europe, expensive database development, and more direct competition from publishers. Librarians have changed their buying habits due to online purchase opportunities, electronic publications, approval plans, institutional priorities, and streamlined resource sharing. This session offers frank discussion of the changes in book buying and selling from both sides, each side of the discussion will be represented by three speakers from their respective professions.

Speakers: Dirk Raes, Erasmus, Amsterdam

Rick Lugg, ~~Vice President, Yankee Book Peddler~~

Beverly Joy Kamo, Co-Owner, Howard Kamo Books

Allen Townsend, Head Librarian, Philadelphia Museum of Art

Amanda Bowen, Collection Management Librarian, Fine Arts Library, Harvard University

Robert W. Beebe, Collection Development Coordinator, San Antonio Public Library

ASK ARLIS

Lost in the Fog: Finding One's Way Around in a Sea of Slides - Kings Garden North and South

Moderator: Sheryl Wilhite Garcia, Visual Resources Curator, Department of Art, University of Houston

Sponsor: Technology Committee

After presentation of short introductory material, this session will be a truly open discussion with no formal papers or panel seating. Sheryl Wilhite Garcia will start the discussion by recapping the general characteristics of the filing schemes that were submitted by ARLIS members for this discussion. Miranda Haddock will briefly summarize criteria and considerations for making decisions about filing schemes including technical issues that arise when putting the records in MARC format as part of a Web based OPAC. Paula Hardin will briefly discuss opportunities for using databases

1:45 p.m. - 3:15 p.m.

Ask ARLIS 7



3:30 p.m. - 5:30 p.m.

Session 15

to automate the process of applying idiosyncratic filing scheme data in order to be able to produce labels that correspond fully to their physical filing characteristics and locations.

People should come prepared to share opinions and experience to respond to questions about problems of particular schemes or potential ramifications of specific decisions. The moderator will periodically poll participants about points of the discussion to see if there is a consensus or disagreement in the group.

Examples and excerpts of the Fogg and other filing schemes submitted will be posted on display boards for participants to refer to and annotate with comments, questions and answers. Other displays will illustrate the use of aids for the physical aspect of finding one's way around a slide collection, including color coding, guide cards, label arrangements, and cross references. This material will be incorporated on the Technology Committee Web site after the conference.

Speakers: Miranda Howard Haddock, Visual Resources Library, Louisiana State University

Paula Hardin, Manager, Visual Resources Library, Western Michigan University

Sheryl Wilhite Garcia, Visual Resources Curator, University of Houston

SESSION

Library Support for Distance Education: New Concepts, New Technologies, New Challenges Kings Garden North and South

Moderator: Betsy Peck Learned, Architecture Librarian, Roger Williams University

Sponsor: Academic Library Division

The rise of new technologies over the past decade has had a great impact on the way nearly all libraries and visual resource collections do business. Our catalogs are online, print indexes have been transformed into databases, and we are digitizing our slide collections. At the same time, the Internet has broken down physical barriers to access. The implications of the changes extend beyond quicker and more efficient access to information within our workplaces as more and more students are able, and elect, to take courses or do research from off-campus. Distance education allows virtual delivery of instruction as well as information, but rather than obviate the need for librarians, it has made us indispensable in new ways. We are tackling new methods and technologies, faced with the challenges of electronic reserves, proxy servers, copyright, and licensing agreements, while still serving the reference and instruction needs of our clientele.

Panelists: Tom Riedel, Distance Learning Librarian, Regis University, "Library Services for Distance Programs: Being All Things to Everyone, Everywhere"

Ilene Frank, Reference Librarian, University of South Florida-Tampa, "Teaching at a Distance"

Eric Schwab, Visual Resources Assistant Curator, Cornell University, "Distance Learning: Options for the Developing Library Professional"

Session 16**ENTRE NOSOTROS: Between Us: ARLIS/NA Looks at Latin American Art Librarianship - Ballroom 3**

Moderators: Daphne Dufresne, Director, Bibliotheque Des Arts, University du Quebec-Montreal

Marilyn Berger, Head Librarian, Blackader-Lauterman Library, McGill University

Sponsor: International Relations Committee, Getty Grant Program

Art librarians from South America will discuss the state of art libraries and art librarianship in their countries. Special collections from such countries as Argentina, Brazil, Chile, or Venezuela will be highlighted prompting discussion of exchange programs, resource sharing, and other topics.

Speakers: Helena Dodd Ferrez, Director of REDARTE, Brazil

Doralisa Duarte, Bibliotecaria, Museo Nacional Bellas Artes, Santiago, Chile

Jorge Orlando Melo, Director, Bebiblioteca Luis-Angel Arango, Santa Fe de Bogata, Columbia

wednesday, march 22, 2000

8:30 a.m. - 5:00 p.m.

ARLIS/NA Executive Board Meeting - Kings Plaza

Open to membership on a seating available basis

wednesday tours**Tour 11****Fallingwater and Kentuck Knob with Sculpture Garden**

8:00 a.m. - 6:30 p.m.

Bus will depart from the Liberty Ave. entrance at the Hilton

See Friday tour 1 for details.

Tour 12**The Cleveland Museum of Art**

8:00 a.m. - 7:00 p.m.

Bus will depart from the Liberty Ave. entrance at the Hilton

Limit: 45 people

Price: \$125

We will travel Northwest of Pittsburgh to visit the Cleveland Museum of Art, one of the preeminent art museums in the United States. The museum's collection includes nearly 40,000 works of art from all times and places, from ancient Egypt to the present, most of which are on permanent exhibition. CMA is especially renowned for the breadth and quality of its collec-



tions. Particularly notable are its comprehensive Asian collection of some 4,800 works, its medieval European art, and its Pre-Columbian holdings. The paintings collection includes masterpieces by Caravaggio, el Greco, Poussin, Rubens, David, Goya, Turner, Church, Cole, Corot, Eakins, Monet, Van Gogh, Picasso, and Bellows. The museum has been particularly active recently in acquiring later 20th century art, having added important works by Warhol, Christo, Kiefer, Richter, Clemente, Kossoff, Close, Mangold, Tansey, and LeWitt, among others.

CMA's art research library holdings are among the nation's largest, including approximately 248,000 volumes, 430,000 slides and 6,000,000 photographic images in microform and as mounted photographs.

Special exhibitions that will be mounted during our visit to the CMA include: *Treasures from the Royal Tombs of Ur*, *Twentieth Century Japanese Prints*, *Japanese Art from a Private Collection*, and *Lynn Gessaman Photographs*.

People touring the CMA may have lunch on their own in the museum's Oasis Cafe. Tour participants will be the guests of the Ingalls Library at a wine and cheese reception in the library prior to returning to Pittsburgh.

This tour is wheelchair accessible.

Tour 13**Hunt Institute for Botanical Documentation**

10:00 a.m. - 12:30 p.m.

Bus will depart from the Liberty Ave. entrance at the Hilton

Limit: 25 people

Price: \$25

Enter the magnificent world of botanical illustration as we tour the world-renowned Hunt Institute for Botanical Documentation. The Institute, a research division of Carnegie Mellon University, was founded in 1961 by Rachel McMasters Miller Hunt who privately collected botanical literature, art and archival materials. The Hunt Institute's exemplary resources include the Library, Art Department, Archives and Bibliography Department. The library of botanical publications dates from the late 1400s through the present and includes color-plate books from the 17th, 18th and 19th centuries. The Reading Room is an elegant library space furnished in the grand style. The Art Department's holdings alone constitute one of the world's largest collections of botanical art and illustration. The Department serves as an international center for the study of botanical art and illustration, and acts as a repository for botanical artworks, providing access to information on artists working with plant themes and worldwide holdings of botanical art, and promoting awareness of contemporary art by organizing and staging exhibitions accompanied by exhibition catalogues. A selection of botanical paintings by members of the Chelsea Physic Garden Florilegium Society will be mounted during the ARLIS/NA conference.

This tour is wheelchair accessible.

Tour 14

Pittsburgh Architects and Their Buildings: The Quiet Cutting Edge
10:00 a.m. - 5:00 p.m.
Bus will depart from the Liberty Ave. entrance at the Hilton

Limit: 45 people

Price: \$50

Guides: Martin Aurand, Architecture Librarian and Archivist, Carnegie Mellon University Libraries; author of *The Progressive Architecture of Frederick G. Scheibler, Jr.* (University of Pittsburgh, 1994).

Charles Rosenblum, Ph.D. Candidate, University of Virginia; curator of the exhibition *Precedent and Principle: The Pennsylvania Architecture of Peter Berndtson and Cornelia Brierly* (Associated Artists Gallery, Pittsburgh, June 18-July 2, 1999) and author of an article by the same title in *Frank Lloyd Wright Quarterly* (Spring 1999).

Pittsburgh's wealth of architecture includes many architects and buildings that are too little known beyond the region. This tour features the work of creative local architectural heroes ranging from the Beaux Arts (Henry Hombostel) to the Progressive (Frederick G. Scheibler, Jr.) to the Wrightian (Peter Berndtson), and more. We'll also point out the most interesting work of out-of-towners along the way. The tour will end at Chatham Village, the innovative 1930s garden suburb by New York planners and Pittsburgh architects.

This tour is not wheelchair accessible.

Tour 15

Frick Art and Historical Center
10:00 a.m. - 1:00 p.m.
Bus will depart from the Liberty Ave. entrance at the Hilton

See Saturday tour 8 for details.

Tour 16

The Andy Warhol Museum and the Mattress Factory
1:00 p.m. - 4:00 p.m.
Bus will depart from the Liberty Ave. entrance at the Hilton

See Saturday tour 9 for details.

New!

The Grove Library of World Art

A New Series of Encyclopedias on World Art
 From the Publisher of the Award-Winning **DICTIONARY OF ART**

<p>Encyclopedia of Latin American and Caribbean Art 1-884446-04-3 • 824pp. 540 illus. • 90 in color</p>	<p>Encyclopedia of American Art before 1914 1-884446-03-5 • 760pp. 500 illus. • 100 in color</p>	<p>Encyclopedia of Italian Renaissance and Mannerist Art 2-vols. • 1-884446-02-7 • 1,760pp. 1,000 illus. • 200 in color</p>
--	---	--

Combining new material with updated articles drawn from the 34-volume *Dictionary of Art*, each of these Encyclopedias is a convenient, authoritative resource for an important period in art. Lavishly illustrated with 400 black & white images and 100 in full color, each volume covers in depth the fine and decorative arts.

GROVE IS THE PROUD SPONSOR OF THE ARLIS EXHIBITS OPENING RECEPTION

GROVE'S DICTIONARIES
 To Order: Grove's Dictionaries, PO Box 2244, Williston VT 05495 Tel: 800.972.9892 Fax: 802.864.7626

#118

The Booth to Visit for Cutting-Edge Resources...

Featuring

Art Index Retrospective 1929-1984



Art Journals Databases

Full Text...

Abstracts...

Indexes...



H.W. Wilson
New York
Dublin

950 University Avenue, Bronx, NY 10452-4297
www.hwilson.com

7 a.m.	
8 a.m.	
9 a.m.	
10 a.m.	
11 a.m.	
12 p.m.	
1 p.m.	ARLIS/NA Executive Board Meeting
2 p.m.	
3 p.m.	
4 p.m.	
5 p.m.	
6 p.m.	
7 p.m.	
8 p.m.	
9 p.m.	
10 p.m.	
11 p.m.	
midnight	

day-in-view-thursday, march 16

7 a.m.										
8 a.m.	ARLUSNA Executive Board Meeting							TOUR 1		
9 a.m.								Fallingwater Kentuck Knob with Sculpture Garden		
10 a.m.								TOUR 2		
11 a.m.								Highlighting Pittsburgh Glass		
12 p.m.		Registration Open								
1 p.m.	RLG Art and Architecture Group Meeting								TOUR 4	
2 p.m.									Beaux Arts and High-Tech	
3 p.m.							TOUR 3			
4 p.m.							Corporate Art Collections			
5 p.m.	Development Committee		Wittenborn Awards Committee							
6 p.m.	Finance Committee		Getty Vocabulary Users Group		Nominating Committee		Publications Committee			
7 p.m.										
8 p.m.										
9 p.m.										
10 p.m.										
11 p.m.										
midnight										

7 a.m.												
8 a.m.	registration desk open	Web Masters						TOUR 5				
9 a.m.		WORK SHOP 1		WORK SHOP 2				TOUR 6	TOUR 7	Fallingwater and Kentuck with Sculpture Garden		
10 a.m.		Internet Room		Collection Development Policies		They Never Covered This in Library School: Basic Resources in Ancient Art & Archaeology		Grant Street Walking Tour	Fourth Avenue Walking Tour			
11 a.m.												
12 p.m.												
1 p.m.	WORK SHOP 3						TOUR 8		TOUR 9	TOUR 10		
2 p.m.	Preservation Management						Frick Art and Historical Center		The Andy Warhol Museum & Mattress Factory	A Pilgrimage to Ethnic Churches		
3 p.m.												
4 p.m.	Travel Awards Committee		Awards Committee		Membership Committee		Standards Committee		Gerd Muesham Award Committee	North American Relations Committee	Technology Committee	Art Doc Editors
5 p.m.	Public Policy Committee		Visual Resources Advisory Committee		Research Committee		International Relations Committee		Diversity Committee	Professional Development Committee	Cataloging Advisory Committee	Collection Development Committee
6 p.m.												
7 p.m.												
8 p.m.	Opening Plenary Session Pittsburgh Art and Architecture											
9 p.m.												
10 p.m.	Welcome Party		Serials Swap 1									
11 p.m.												
midnight												

V
VI
W
V
P
A

7 a.m.	Yoga												
8 a.m.	LA Conference Planning	Internet Room Open	Exhibitor Set-up	Decorative Arts Roundtable	Indigenous Art Roundtable	New Art Roundtable	Serials Roundtable	Space Planners Roundtable	Women & Art Roundtable	BHA Users Group	Accreditation Standards	Gay & Lesbian Roundtable	
9 a.m.	registration desk open 7:30-4:00		Academic Library Division	Art & Design School Library Division	Museum Library Division	Public Library Division	Visual Resources Division						
10 a.m.			Architecture Section	Cataloging Section	Reference and Information Services Section	Interlibrary Loan	Art Museum Library Directors	Visual Resources Software Users					
11 a.m.													
12 p.m.		Exhibit Hall Open	Exhibit Hall Opening Reception										
1 p.m.						ASK ARLIS 1 Planning for the Future							
2 p.m.			PANEL SESSION 1 Fashioning a New World	PANEL SESSION 2 Women Leaders in the Art Pottery Industry	PANEL SESSION 3 CORE Foundations for the Vision of the Future								
3 p.m.													
4 p.m.			Public Library Discussion Group	Art & Design School Discussion Group	Cataloging Problems Discussion Group	Problem of Provenance Discussion Group	3:45-5:15 ASK ARLIS 2 The Visual Resources Professional	3:45-5:15 ASK ARLIS 3 Access to Access					
5 p.m.			5:15-6:00 Transportation to Convocation										
6 p.m.			Convocation Carnegie Music Hall										
7 p.m.													
8 p.m.			Ars Libri Party Carnegie Music Hall Foyer										
9 p.m.													
10 p.m.		Transportation to Hotel											
11 p.m.													
midnight													

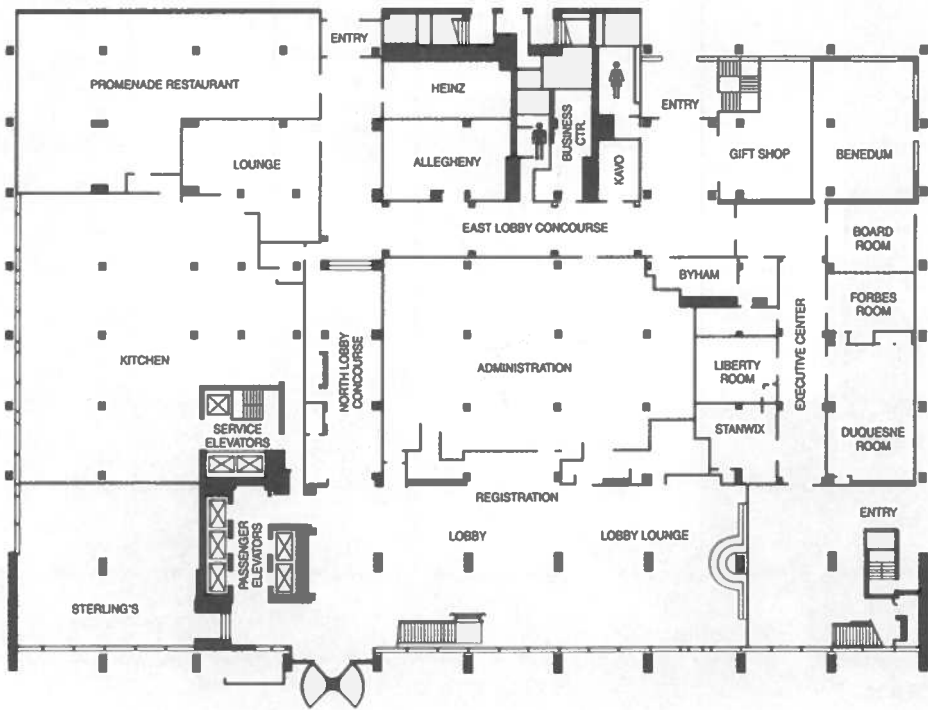
7 a.m.	Yoga											
8 a.m.	Registration Desk Open	Internet Room Open	Exhibits	Continental Breakfast in Exhibit Hall	Avery Users Group	SCIP10 Users Group	8:00-9:30 Serials Swap 2					
9 a.m.					Panel Session 4 Taming the Untamable	Panel Session 5 Merging Print and Digital Collections	9:15-10:45 ASK ARLIS 4 Creative Multiples Artists' Books					
10 a.m.												
11 a.m.				11:15 ARLIS/NA Membership Meeting								
12 p.m.				12:30-2:15 Membership Luncheon and Keynote Speaker								
1 p.m.												
2 p.m.												
3 p.m.					Panel Session 6 Search Tools and Strategies for Web Sites	Panel Session 7 The Construct of Indexing	ASK ARLIS 5 From Collaboration to Consortia					
4 p.m.												
5 p.m.					Panel Session 8 Real or Not	Panel Session 9 Collecting Time: Opening a Time Capsule	Panel Session 10 Wrought of Steel and Philanthropy					
6 p.m.				Exhibit Hall Reception and Silent Auction								
7 p.m.												
8 p.m.												
9 p.m.											Serials Swap 3	
10 p.m.												
11 p.m.												
midnight												

7 a.m.	Yoga				
8 a.m.	Registration Desk Open	Internet Room Open	Exhibit Hall Open	Leadership Breakfast	
9 a.m.				Exhibit Hall Coffee Break	
10 a.m.				Panel Session 11 Glass in the Ohio Valley	Panel Session 12 Still Codeless After All These Years
11 a.m.					
12 p.m.			Canadian Members Meeting		
1 p.m.					
2 p.m.			Panel Session 13 Lost and Found	Panel Session 14 Acquisitions At the Millennium	1:45-3:15 Ask ARLIS 7 Lost in the Fog
3 p.m.					
4 p.m.			Panel Session 15 Library Support for Distance Education	Panel Session 16 Entre Nosotros	
5 p.m.					
6 p.m.					
7 p.m.					
8 p.m.					
9 p.m.					
10 p.m.					
11 p.m.					
midnight					

7 a.m.					
8 a.m.	ARLIS/NA Executive Board Meeting	Tour 11 Fallingwater and Kentuck Knob with Sculpture Garden	Tour 12 The Cleveland Museum of Art		
9 a.m.					
10 a.m.				Tour 13 Hunt Institute for Botanical Illustration	Tour 14 Pittsburgh Architects and Their Buildings
11 a.m.					
12 p.m.					
1 p.m.			Tour 16 The Andy Warhol Museum and the Mattress Factory		
2 p.m.					
3 p.m.					
4 p.m.					
5 p.m.					
6 p.m.					
7 p.m.					
8 p.m.					
9 p.m.					
10 p.m.					
11 p.m.					
midnight					

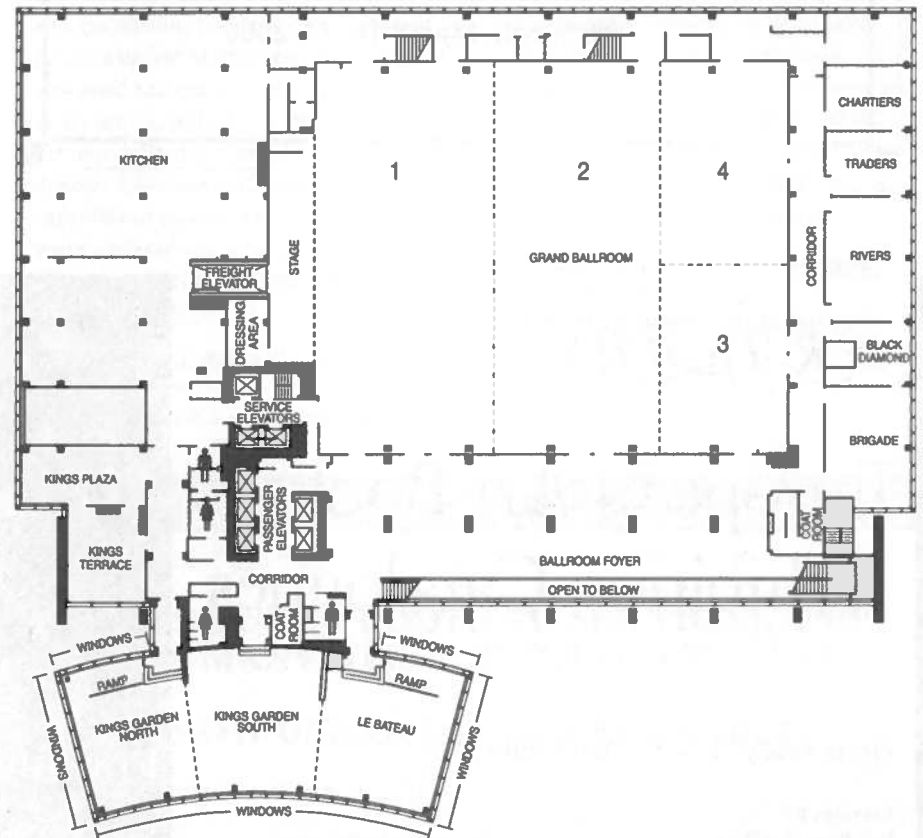
hotel floor plan - lobby level

LOBBY LEVEL



hotel floor plan - mezzanine level

MEZZANINE LEVEL



JOHN BENJAMINS ANTIQUARIAT

&

JOHN BENJAMINS PUBLISHING CO

welcome you to their book-exhibit
during the 2000 Annual
Conference of the Arlis,
Pittsburgh, March 16-22, 2000

ERASMUS

European Art Books Exhibition Catalogues

Please send your orders and inquiries to:

Erasmus BV
PO. Box 19140
1000 GC Amsterdam
The Netherlands
Tel.: +31-20-627 69 52
Fax: +31-20-620 67 99

E-mail: erasmus@erasmusbooks.nl
Internet: <http://www.erasmusbooks.nl>

For books from France:
Librairie Erasmus
28, rue Basfroi
75011 Paris, France
Tel.: +33-1-43 48 03 20
Fax: +33-1-43 48 14 24
E-mail: erasmus@erasmus.fr

Erasmus

- Professional
- Traditional
- Academic



NEW ON CD-ROM

AFRICAN-AMERICAN ARTISTS ON DISC

Updated Afro-American Artist Bibliography

African-American Artists on Disc identifies more than 5,000 fine, self-taught, and craft artists who have practiced (or were born) in the U.S. Entries give brief biographical details, medium, artworks, and references to books, chapters in books; exhibition announcements, brochures, and catalogs; periodicals and newspapers, plus other annotated sources such as posters, dissertations, and letters. Destined to be the new definitive scholarly reference, *African-American Artists on Disc* greatly expands our knowledge of the artistic, social, and cultural lives of Black Americans over three centuries of American History.

Published by G.K. Hall & Co. an imprint
of the Gale Group
ISBN 0-7838-8539-3 • CD-ROM • \$995

WOMAN ARTISTS ON DISC

First Edition of a New Art History Resource

The most comprehensive bibliography of women artists available and an authoritative resource to wide-ranging reference materials on women's art history in the Western world. *Women Artists on Disc* consolidates key feminist and traditional scholarship on the creative contribution of women artists and designers to the visual arts of Europe and America. The fully searchable CD-ROM integrates recent sources with four classic, annotated bibliographic works (until now, unavailable in electronic format).

Published by G.K. Hall & Co. an imprint
of the Gale Group
ISBN 0-7838-0090-8 • CD-ROM • \$995

To Order or for Product Information call: 800-223-1244 or fax: 800-558-4676

**STOP BY OUR BOOTH TO SEE THESE AND
THE MANY OTHER TITLES ON DISPLAY.**

SHOW DISCOUNTS ARE AVAILABLE!



T · H · E
GROVE
DICTIONARY
OF
ART
ONLINE

One of 50 Best
Reference Sources
of the Millennium.

—LIBRARY JOURNAL

A 1999
CHOICE
Outstanding
Academic
Title

REFERENCE BOOKS BULLETIN
Editor's Choice 1999

VISIT WWW.GROVEART.COM

ARRANGE A FREE 30-DAY TRIAL FOR YOUR LIBRARY

 **GROVE'S
DICTIONARIES**

PHONE: 212.689.9200 X211 • TOLL FREE: 800.221.2123 • FAX: 212.689.9711

E-mail: grove@groveref.com • Web: www.groveref.com

Grove is the proud sponsor of
the ARLIS Exhibits Opening Reception

With Offices to Serve You:
Pittsburgh, PA: 800/242-3790
Philadelphia, PA: 800/233-3401
Silver Spring, MD: 800/871-1662

 **PALINET**
Libraries shaping tomorrow

Visit us on the Web: www.palinet.org

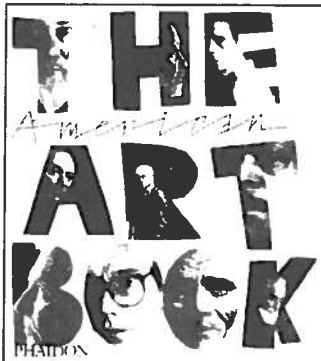
Join us and see how much we can do for you!

PALINET Member Services:
OCLC Services
Educational Program
Information & Technology Services
Electronic Information Resources
Cooperative Purchasing

Welcomes You to Pittsburgh

PALINET

 ARLIS/NA Members



The American Art Book

512 pp, 500 color illustrations.
0-7148-3845-4



Victorian Painting

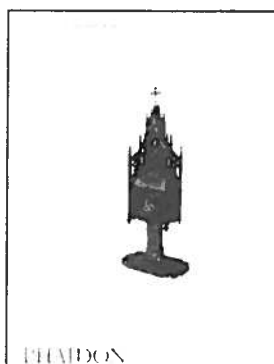
512 pp, 600 color illustrations.
0-7148-3776-8

New in the ART & IDEAS series



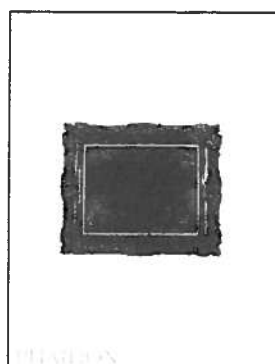
Egyptian Art

0-7148-3627-3



Gothic Revival

0-7148-3480-7



Impressionism

0-7148-3826-8

Recently published ART & IDEAS titles

Aboriginal Art

0-7148-3752-0

David

0-7148-3804-7

Rubens

0-7148-3412-2

Each paperback volume, 448 pp, 250 color illustrations

PHAIDON

Phone: 877-PHAIDON (742-4366) • Fax: 877-742-4370

E-mail: usaales@phaidon.com



K G Saur North America
Research Collections
418 E. Sixth Street
Dayton, Ohio 45402
1 888.461.4767
KGSaurNA@aol.com
<http://www.saur.de>

Available Now

The Artists of the World. Bi-bibliographical Dictionary from A-Z

1999-2001. c. 10 volumes. c. 860 pages per volume. Half-leather bound. ISBN 3-598-23975-0. Subscription price to July 31, 2000. \$1,378. Thereafter. \$1,480.

Allgemeines Künstlerlexikon (AKL) is the most comprehensive and current resource for research on artists from all over the world and for all ages. This new publication from the editorial staff of AKL provides a preview of over 500,000 profiles to be included when the encyclopedia is completed.

This compilation presents an essential reference work for all libraries and art researchers. Each entry includes the artist's name, date and place of birth and death. Occupation descriptions are in English improving ease of use. Spine labels can be in English or German. The set serves both as an index to the AKL for libraries with a standing order to the collection or as a stand-alone reference for smaller collections and individual researchers.

Stop by our exhibit at the 2000 Annual Conference to examine this set.

"...an invaluable addition to any design library or database"
 Steven Heller, AIGA Journal of Graphic Design

Sample entry:

designandappliedartsindex on CD-ROM

Start Run the Search for View
 Menu Tutorial Articles Card Print
 Click in box: to choose those articles you wish to Print or Save to disk Save
 This Journal is Held In the Library Exit
 deal

[Article] Beverly Russell
 Author: Starck, raving genius of design.
 Title: Graphics vol.51 no.301 (Jan/feb.1996) pp.30-41 illus. por.
 Reference: Graphics vol.51 no.301 (Jan/feb.1996) pp.30-41 illus. por.
 Language(s): English, German and French

For further information about periodical click:

A profile of French designer Philippe Starck, with an analysis of the "secrets" of his success. The article includes a discussion of his latest project - the Delano Hotel in Miami, Florida, and illustrations of his recent work - the roof structure for the Nami Nami building in Tokyo, glassware for Daum, the 'Dr Oola' adjustable footrest for Vitra, the 'Parrot' TV and 'Alo' telephone for Thomson, the 'Ego' TV for Telefunken, the 'Rosy Angelis' floor lamp and 'Light Life' lamp for Flos, the 'Hot Bertaa' tea kettle for Alessi, a toothbrush and container for Fluocarl, and beds for Cassina.

Starck, Philippe (1949-; France, Functional/Industrial Design)(Architect)
 Hotels: Architecture and Interior Design: USA: Miami, Florida

To return to previous search screen click: * Field Search *
 Click on arrows to view references: 8 of: 10

Long recognized as the principal source on current trends in design and the applied arts world wide, *design and applied arts index* is now available on CD-ROM, making it an indispensable resource not only for students, historians and librarians, but also for working designers and craftspeople.

At least 10,000-12,000 new references are added annually.

At least 10,000-12,000 new references are added annually.

daai on CD-ROM contains over 100,000 annotated references from more than 400 design and craft journals published between 1973-1999 - the largest database of its kind in the world. It also includes data on over 40,000 designers, craftspeople, studios, workshops, firms etc.

daai on CD-ROM also includes four supplementary databases: directories of design and craft courses, organisations, archives and journals

For further information about daai on CD-ROM contact:

Design Documentation • Franchise Shaw • Spring Lane • Burwash • East Sussex • TN19 7HY • England
 Telephone: +44 1435 883950 • Fax: +44 1435 883960 • E-mail: design_documentation@compuserve.com • WWW: surf.tor/daai

LUNA

**Building Image Collections
 for the Eye and Mind**

Digital Image Production
 scanning, digital photography, editing, data services, compression

Insight® Software
 to access and work with image collections over the Internet

Luna Imaging Inc
 phone: 310 452 8370
 fax: 310 452 8389
 e-mail: contact@luna-img.com
 www.luna-imaging.com

2001: AN LA ODYSSEY

ARLIS/NA
29th Annual Conference
Los Angeles, CA
March 29 - April 4, 2001

ARLIS NA
 Art Libraries Society of North America

New Books for Art Libraries

Getty

Trust Publications

Booths
201 & 203

**Nadar/Warhol:
Paris/New York**
Photography and Fame
Gordon Baldwin and
Judith Keller
ISBN 0-89236-560-9, \$60.00

**A Passion for
Performance**
Sarah Siddons and
Her Portraitists
Edited by Robyn Asleson
Essays by Robyn Asleson,
Shelley Bennett and Mark
Leonard, and Shearer West
ISBN 0-89236-556-0, \$39.95

**Adriaen de Vries
1556-1626**
Imperial Sculptor
Frits Scholten
ISBN 0-89236-553-6, \$60.00

**The Renewal of
Pagan Antiquity**
Aby Warburg
Introduction by
Kurt W. Forster
Translation by David Britt
ISBN 0-89236-537-4, \$75.00

Time & Bits
Managing Digital
Continuity
Edited by Margaret MacLean
and Ben H. Davis
\$9.95 paperback

**The Group Portraiture
of Holland**
Alois Riegl
Introduction by
Wolfgang Kemp
Translation by Evelyn
M. Kain
ISBN 0-89236-548-X,
\$55.00 paperback

The Introduction To
series acquaints profes-
sionals and students
with issues and techno-
logies in the production,
management, and dis-
semination of cultural
heritage information.

**Introduction to
Archival Organization
and Description**
Access to Cultural
Heritage
Michael J. Fox and
Peter L. Wilkerson
Edited by Suzanne R.
Warren
ISBN 0-89236-545-5,
\$14.95 paperback

Introduction to Managing Digital Assets

Options for Cultural
and Educational
Organizations
Diane M. Zorich
ISBN 0-89236-546-3,
\$24.95 paperback

**Introduction to
Vocabularies**
Enhancing Access to
Cultural Heritage
Information
Elisa Lanzi
ISBN 0-89236-544-7,
\$14.95 paperback

**Introduction to
Object ID**
Robin Thornes
ISBN 0-89236-572-2,
\$11.95 paperback

**Introduction to
Metadata**
Pathways to Digital
Information
Tony Gill, Anne Gilliland-
Swetland, and Murtha Baca
ISBN 0-89236-533-1,
\$9.95 paperback
Also available in Spanish



Getty Trust Publications
PO Box 49659
Los Angeles CA 90049-0659
800 223-3431 Phone
310 440-7333 International
818 779-0051 FAX
www.getty.edu/publications

Visit our Booths
201 & 203

Essential Resources on Western Art and Architecture

NOW AVAILABLE

**Avery Index to Architectural
Periodicals on Disc**
New, Cumulative Edition, 2000 Release
The most comprehensive listing of journal
articles on architecture and design. This
new release, surveying more than seven
hundred American and foreign journals,
includes all articles from the previous CD-
ROM version as well as one hundred seven-
ty-five thousand records converted from
the Avery Index card file, with records
dating from the 1860s to 1970s. Formerly
distributed by G.K. Hall and Company.

ISBN 0-89236-574-9
\$995.00

The Sculpture Journal
Published annually, *The Sculpture Journal*
features articles by leading international
scholars relating to European sculpture
from the sixteenth century to the present.
Volumes 2-4
ISSN 1366-2724
\$50.00 paperback, each volume



Getty Trust Publications
PO Box 49659
Los Angeles CA 90049-0659
800 223-3431 Phone
310 440-7333 International
818 779-0051 FAX
www.getty.edu/publications

New from the Getty

Bibliography of the History of Art (BHA) CD-ROM

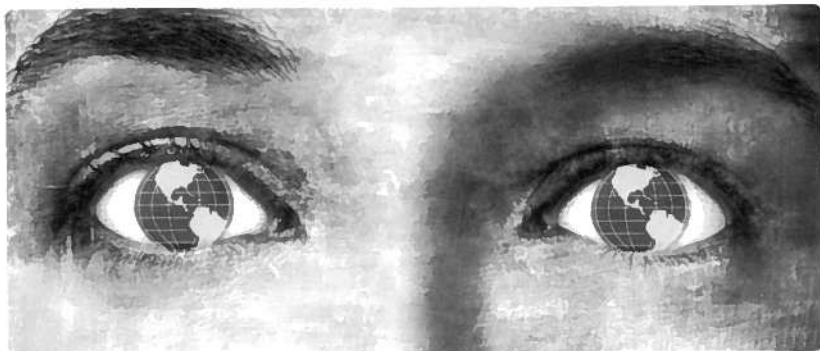
The world's most extensive abstracting and
indexing service for current literature on
the history of art in Europe and the New
World. Surveys the visual arts from late
antiquity to the present, offering research-
ers access to more than two thousand peri-
odicals published in forty-five languages, as
well as books, exhibition catalogues, con-
ference proceedings, and bibliographies,
with interface and index terms available in
either English or French.
The BHA CD-ROM is now released quarterly.

ISBN 0-89236-400-4
\$1,000.00 single user
Please inquire about prices for networked
and institutional use.

The Getty Provenance Index Cumulative Edition on CD-ROM, 1999 Release

Six databases containing information crucial
to the study of the collecting practices
of past centuries. Includes cataloguing
information on paintings executed by
artists born before 1900 from a selection
of American and British museums, infor-
mation on the provenance of paintings
from American and British collections,
inventories of notable seventeenth- and
eighteenth-century Italian, Spanish, and
Dutch collections, as well as the contents
of British, Belgian, Dutch, German, and
French painting auctions of the nineteenth
century.

ISBN 0-89236-418-1
Institutions: \$900.00; Individuals: \$250.00



How do the world's finest artists look at the world?

Find out at the Carnegie International,
the most important contemporary
art exhibition in North America.

Come to Carnegie Museum of Art,
Oakland. It will be a real eye-opener.

Nov 6, 1999 – Mar 26, 2000

www.carnegieinternational.org

412.622.3131

CI:99/00

Carnegie International @
Carnegie Museum of Art

Sponsored by



Mellon