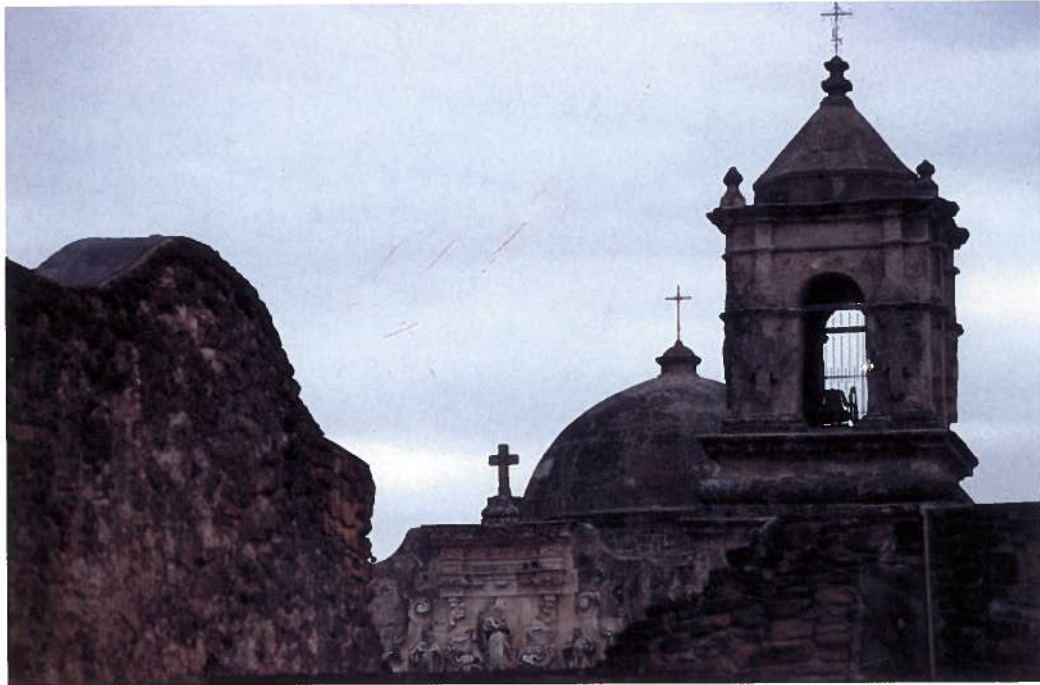


Art Libraries Society of North America

## 25TH ANNUAL CONFERENCE

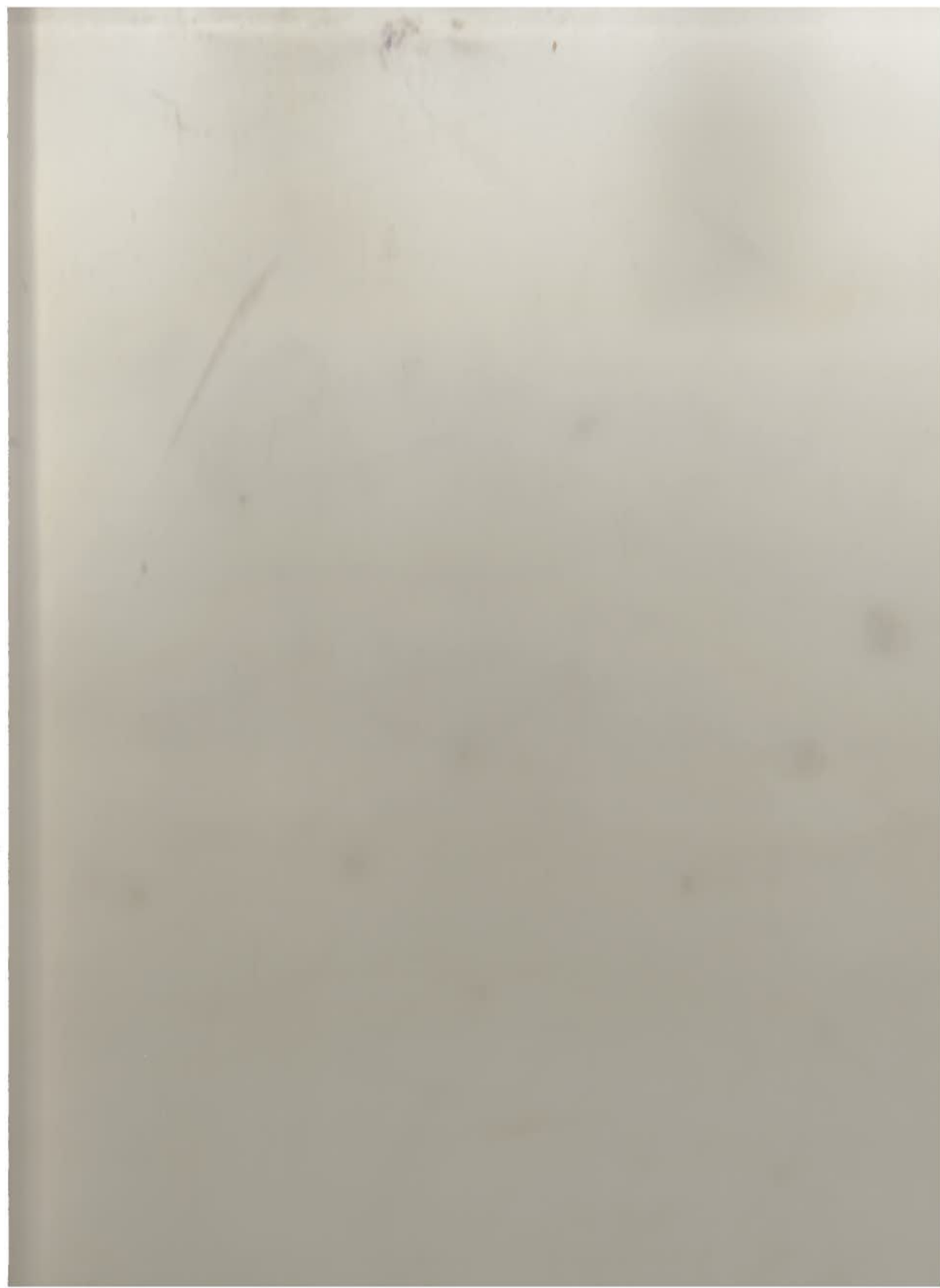
**Celebrating 25 Years of Service to  
the Arts Information Community**



April 4-9, 1997

The Crowne Plaza St. Anthony Hotel

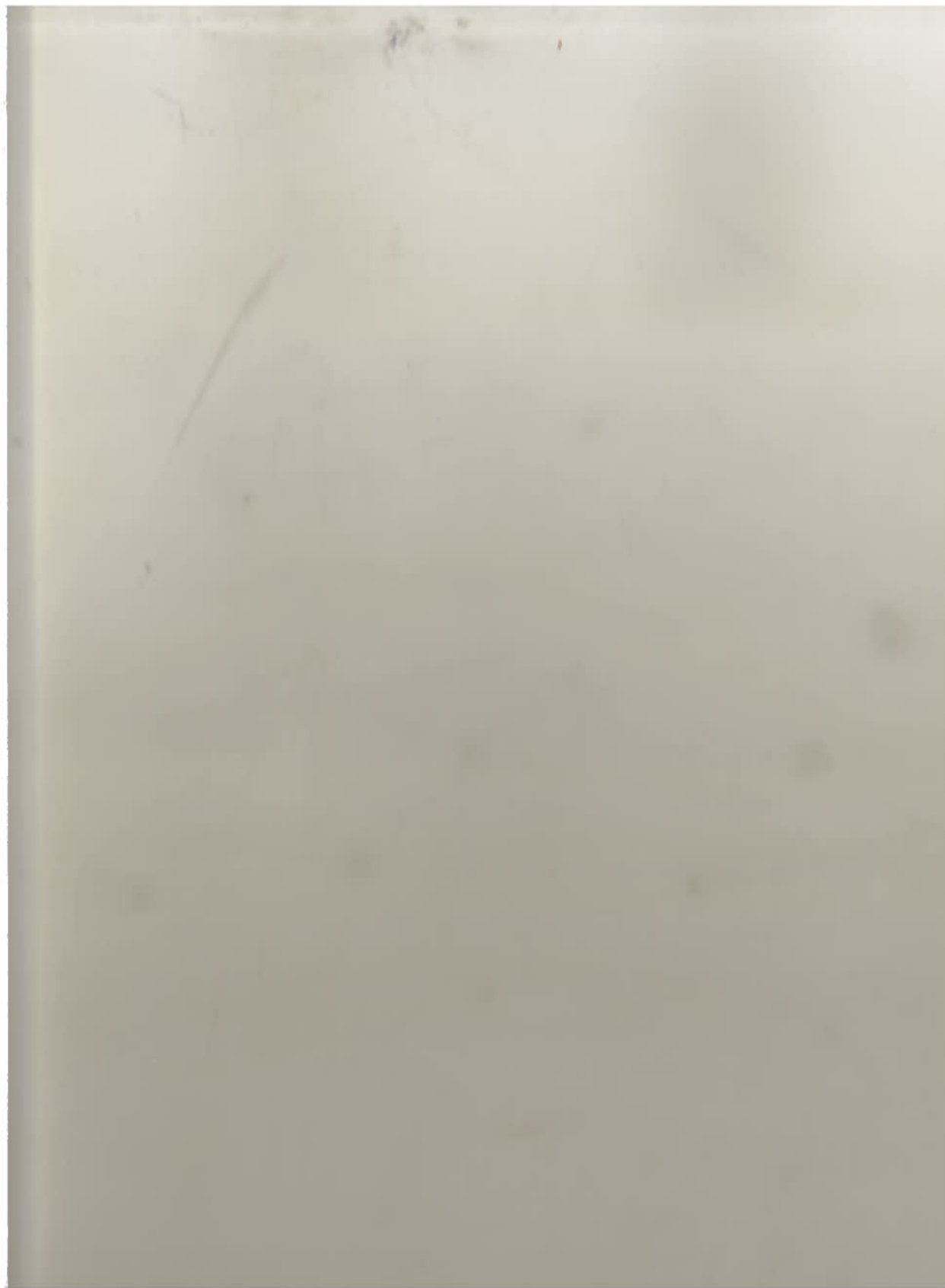
San Antonio, Texas





*Front Cover: San Jose y San Miguel de Aguayo Mission*

*Back Cover: Central Library, San Antonio Public Library System*



Art Libraries Society of North America

## **25TH ANNUAL CONFERENCE**

---

**Celebrating 25 Years of Service to  
the Arts Information Community**



April 4-9, 1997

The Crowne Plaza S. Anthony Hotel

San Antonio, Texas

# CONTENTS

---

Sponsors .....	4
ARLIS/NA Executive Board 1997 .....	5
Exhibitors .....	6
Welcome .....	7
ARLIS/NA 1997 Conference Committee .....	8
General Information .....	9
Program Information .....	11
Local Events and Activities .....	12
Conference Program .....	14
Day in View Schedules .....	48
Acronyms and Terms .....	55
Hotel Floor Plans .....	57
Local Information .....	60

## SPONSORS

---

ARLIS/NA would like to gratefully acknowledge the generous support of the following businesses and institutions:

American Airlines	The Dictionary of Art
Amon Carter Museum	Erasmus B.V. Amsterdam
Andrew Cahan Bookseller	H.W. Wilson Company
Ars Libri, Ltd.	The Research Libraries Group, Inc.
Art Sales Index	San Antonio Public Library
J. Benjamins Antiquariat B.V.	Sanderson Computers
F.A. Bennett, Inc.	Southwestern Bell
Casalini Libri	University Publications of America

### 25th Anniversary Endowment Fund Contributors include:

Amon G. Carter Foundation	ARLIS/New England
ARLIS/Central Plains	ARLIS/New York
ARLIS/DC-MD-VA	ARLIS/Northern California
ARLIS/Delaware Valley	ARLIS/Northwest
ARLIS/Michigan	ARLIS/Ohio Valley
ARLIS/Midstates	ARLIS/Southeast
	ARLIS/Southern California
	ARLIS/Texas
	ARLIS/Twin Cities
	Ars Libri, Ltd.

## ARLIS/NA EXECUTIVE BOARD 1997

---

### Officers

#### President

Jack Robertson  
University of Virginia  
Fiske Kimball Fine Arts Library

#### Vice-President/President-Elect

Roger Lawson  
National Gallery of Art Library

#### Secretary

Maryly Snow  
University of California, Berkeley  
Architecture Slide Library

#### Treasurer

Ross Day  
Metropolitan Museum of Art  
Robert Goldwater Library

#### Past President

Edward H. Teague  
University of Florida  
Architecture & Fine Arts Library

### Regional Representatives

#### Northeast

Elizabeth Peck Learned  
Roger Williams University  
Architecture Library

#### South

Janine Henri  
University of Texas at Austin  
Architecture & Planning Library

#### Midwest

Stephanie Sigala  
St. Louis Art Museum Library

#### West

Deborah Barlow Smedstad  
Los Angeles County Museum of Art  
Art Research Library

#### Canada

Jane Devine  
Vancouver Public Library  
Fine Arts & Music Division

---

#### Executive Director

Penney DePas, CAE

#### Conference Manager

Susan Kruse

## EXHIBITORS

---

- ABC-CLIO  
Academic Press  
AMIGOS Bibliographic Council, Inc.  
Andrew Cahan: Bookseller, Ltd.  
Antique Collectors' Club, Ltd.  
Ars Libri, Ltd.  
ArtFact, Inc.  
Arthur H. Minters Booksellers  
ArtNetwork  
Ashgate Publishing Company  
Aux Amateurs de Livres  
Baker & Taylor  
Blackwell's  
Califia Books  
Casalini Libri  
The Craftsman on CD-ROM  
design and applied arts index  
The Dictionary of Art  
Emmett Publishing Ltd.  
EOS International  
Erasmus Boekhandel B.V.  
ESCALA Ltd.  
F.A. Bennett, Inc.  
G+B Arts International  
G.K. Hall & Company  
Gallery Systems  
Garland Publishing Inc.  
Getty Trust Publications  
Gordon's Art Reference, Inc.  
Han-Shan Tang Books  
Harrassowitz  
Hilmarton Manor Press  
Howard Karno Books  
H.W. Wilson Company  
Iberoamericana de Libros y Ediciones  
IDC Publishers  
ISI  
John Benjamins Publishing & Antiquariat  
Music Library Association, Inc.  
Norman Ross Publishing  
Parkstone Aurora Liber T  
Penrose Press  
Puvill Libros  
The Research Libraries Group  
Sanderson Computers  
The Scholar's Choice  
Thomas Heneage Art Books, London  
University Publications of America  
Video Data Bank  
Worldwide Books

## WELCOME

---

Welcome to ARLIS/NA's silver jubilee! At this San Antonio conference we celebrate twenty-five years of growth and accomplishment. Annual conferences have been the focal point at which business is conducted, leadership positions are renewed, groups present programs for the benefit of all, and colleagues from around North America—and increasingly from around the world—get together to talk, listen, learn, plan, make new associates, and renew face-to-face friendships.

The San Antonio conference planners have done exceedingly well in planning this event. The program is a rich and relevant array of tours, workshops, special events, topical discussions, thematic sessions, and exhibits. In microcosm, the program reflects the diversity and complexity of the universe in which we arts information specialists practice. We communicate, instruct, collect, catalog, and provide access to all kinds of information in all conceivable media; this has not changed in twenty five years. But consider the changes—greater opportunities—in professional practice that technology has wrought in the past twenty-five years!

Above all else this conference exemplifies ARLIS/NA's strongest characteristic: many individuals working together committed to common goals. Our sponsors and exhibitors participate and contribute; members of the Texas chapter have gone above and beyond; dozens of session moderators and speakers share their time and expertise; management staff and executive leadership coordinate and facilitate—largely “behind the scenes”; and all of us in attendance provide opportunities for networking and sparking ideas. This is a spectacular demonstration of a twenty-five year tradition.

**Jack Robertson**  
ARLIS/NA President

# ARLIS/NA 1997 CONFERENCE COMMITTEE

---

## Conference Co-Chairs (Program)

Jeannette Dixon  
Hirsch Library  
Museum of Fine Arts, Houston

Allen Townsend  
Philadelphia Museum of Art Library

## Conference Co-Chairs (Local Arrangements)

Robert Beebe  
San Antonio Public Library

Ann Jones  
McNay Art Museum Library, San Antonio

## Registration

Laura Schwartz  
Fine Arts Library  
University of Texas at Austin

## Exhibits

Phillip Heagy  
Menil Collection Library, Houston

## Tours & Transportation

Patricia Blackman  
San Antonio Public Library

## Hospitality

Marcia Stein  
Hirsch Library  
Museum of Fine Arts, Houston

## Fundraising

Milan Hughston  
Amon Carter Museum Library, Ft. Worth

## Internet Room

Sam Duncan  
Amon Carter Museum Library, Ft. Worth

# GENERAL INFORMATION

---

## Registration and Information Desk

The conference registration desk is located in the St. Anthony Club on the lobby level of the hotel. Note that due to other meetings previously scheduled in the hotel, it will be necessary for the registration desk to move to the Anacacho Ballroom foyer on Sunday, April 6 for the remainder of the conference.

## Receipts

Receipts will be included in your conference registration packet.

## Guest Policy

If you plan to bring a guest, please observe the following ARLIS/NA guest policy: Guests of the conferees are encouraged to register for the full conference. Unregistered guests will be permitted to join tours and special events on a space available basis after all registered conferees have been accommodated.

## Open Meeting Policy

ARLIS/NA committee meetings are open to all members unless a closed executive session is called.

## Non-Smoking Policy

Smoking is not permitted in conference meeting rooms or exhibit space.

## Author's Rights Policy

To further the Society's objectives and contribute to its publishing program, ARLIS/NA reserves the right of first refusal for publication of papers presented at society conferences. Any conference speakers interested in publishing their papers elsewhere must first obtain release from the chairman of the Publications Committee, who will consult with the *Art Documentation* editor. It is understood that the right of first refusal does not obligate ARLIS/NA to publish all conference papers. If, after a conference, the Publications Committee decides not to publish a particular paper or collection of papers, the author(s) should feel free to seek publication elsewhere.

## Daylight Savings Time

Just a reminder that Daylight Savings Time begins at 2:00 a.m. on Sunday, April 6. Please remember to move your clock/watch forward one hour so that you do not miss any conference sessions or activities.

## Poster Display

Several posters will be displayed on the stage in the exhibit hall Sunday through Tuesday. Posters may be viewed during exhibit hours only. Poster titles include:

### **"Answering the Call: Opportunities for Development"**

Presented by Norma M. Johnson, for the Professional Development Committee

### **"Art Documentation, Art Librarianship and the Recovery of the Threatened Cultural Heritage of Bosnia-Herzegovina"**

Presented by Andras Riedlmayer, for the Diversity Committee

### **"Community Ties: The ARLIS/NA Web Site"**

Presented by Ed Teague, ARLIS/NA Web Master

### **"Collection Development Policies for Visual Resources Collections: An Outline of the Issues"**

Presented by Martha Mahard, Visual Resources Division

## Internet Connections

The Internet Room will be available to conference attendees wishing to surf the Web, check e-mail, or do word processing. Located in the Johnson Room on the third floor, the room will be equipped with four Windows 95 (R) workstations loaded with a Web browser capable of http, ftp, gopher, and telnet. In addition, the machines will be outfitted with word processing software and will have printing capabilities. You will find a daily listing of room hours in the program schedule.

# PROGRAM INFORMATION

## Exhibits

The exhibits will open on Sunday, April 6 in the Anacacho Ballroom with a reception from 5:45 to 7:45 p.m. sponsored by F.A. Bennett, Inc. Exhibitors include publishers, book dealers, visual resources vendors, suppliers of computer software and systems. Please be sure to spend time with each vendor as they are a vital source of income to the society and your attendance is important in making the exhibits a success.

The closing reception on Tuesday, April 8 from 4:45-6:30 pm will be sponsored by J. Benjamins Antiquariat B.V. Coffee service will be provided both Monday and Tuesday mornings courtesy of Sanderson Computers and University Publications of America.

## Workshops

Workshops require pre-registration. They will be held at the San Antonio Public Library, 600 Soledad Street. Transportation is not included in the workshop fee. Lunch will be provided for registered attendees.

## Tours

Tour confirmation and ticket distribution will be provided by Destination: San Antonio. Funds collected by ARLIS/NA for private home collection tours are solely for the purpose of covering the costs of transportation.

## Hospitality Suite

Because of the wide variety of dining and entertainment options on San Antonio's River Walk, there will be no organized Hospitality Suite. However, conferees are encouraged to gather in the Crowne Plaza St. Anthony's lounge, Pete's Pub, located next to the hotel registration desk.

## New Members and First-Time Attendees

We are pleased that you have elected to join us in San Antonio for ARLIS/NA's 25th Annual Conference. We invite you to attend an orientation meeting on Saturday, April 5 from 3:00 to 3:45 p.m. Participants will learn about ARLIS/NA and how to become more involved in the Society at the chapter and Society level.



## LOCAL EVENTS AND ACTIVITIES

San Antonio provides many cultural and sporting opportunities. Following are highlights. Many of these events require ticket purchase. Nightlife abounds in the downtown area, especially along the River Walk.

The city of San Antonio staffs a Visitor Information Center (317 Alamo Plaza directly across Alamo Plaza from the Alamo) which is open 8:30 a.m. to 6:00 p.m., seven days a week. They provide general tourist information and supply brochures on attractions in San Antonio and throughout Texas. They also have a calendar of events, maps, and city bus schedules (phone: 225-4636). Conference attendees unable to book ARLIS/NA-sponsored tours may wish to consult with the Visitor Information Center about commercial tour options. There will also be brochures available at the conference registration desk for self-guided tours.

**McNay Art Museum** (6000 N. New Braunfels, 210-824-5368). "Ruckus Rodeo" by Red Grooms, one of his pop art masterpieces and a great blend of caricature, theater, and satire; based on a Texas rodeo. On view through April 13, 1997.

**San Antonio Museum of Art** (200 W. Jones, 210-978-8100). "Splendors of Ancient America: The Elizabeth Huth Coates Maddux Collection," featuring 43 stone, metal, and ceramic objects from Mexico, and South and Central America. On view through June 8, 1997.

"J. James Tissot: Biblical Paintings," featuring a selection of fifty-five paintings by this nineteenth century master that illustrate the Hebrew Bible (on loan from the Jewish Museum of New York). On view April 6, 1997 - June 22, 1997.

**The Witte Museum** (3801 Broadway, 210-820-2111). "Thundering Hooves: Five Centuries of Horse Power in the American West," traces 500 years of the horse in the American Southwest, focusing on the growth of the four major cultures of the region that centered around the horse: the conquistadores, vaqueros, Comanches, and cowboys. On view through January 30, 1998.

"H-E-B Science Treehouse," will provide hands-on science activities for all ages exploring physics, biology, chemistry, and simple machines. The four-level, 15,000 square foot science center's signature structure will be a treehouse containing educational/observation areas and a rooftop level with an environmental monitoring station. Opens March 15, 1997.

"Fiesta Traditions," is the museum's annual salute to San Antonio's city-wide celebration of Fiesta. The exhibit will include glittering coronation gowns, historic photographs, and memorabilia illustrating 100 years of Fiesta tradition. On view April - June 1997.

**Guadalupe Cultural Arts Center** (1300 Guadalupe, 210-271-3151). Two person exhibit, George Krause and Tomas Casademunt. On view through April 11, 1997, at the Visual Arts Annex.

"13th Annual Juried Women's Art Exhibit," featuring Latina artists with entrants from Texas, Arizona, New Mexico, California, and Colorado. On view through April 11, 1997 at the Guadalupe Theater.

**Institute of Texan Cultures** (HemisFair Park, 210-458-2300). "Shared Stories - Exploring Cultural Diversity." On view through April 27, 1997.

**La Villita** (Presa Street, 210-226-3593). 35th Annual Starving Artist Art Show, April 5 - 6, 1997. 10:00 a.m. until dark. \$3.00 admission. Works by over 700 artists and craftsmen will be available for purchase.

**Majestic Broadway Series** (Majestic Theatre, 230 E. Houston Street, 210-226-3333). "The Man of La Mancha," starring Robert Goulet - April 8-13, 1997.

**San Antonio Symphony** (Majestic Theatre, 230 E. Houston Street, 210-554-1010). Pilar Roja, flamenco dancer; Christopher Wilkins, conductor. Program to include the following: Albeniz/Arbos - Iberia (excerpts), Falla - Suite from El amor brujo (excerpts), Carlos Surinach - Sinfonietta flamenca, and Falla - La vida breve (excerpts) - April 3 & 5, 1997.

**San Antonio Spurs** (basketball) (210-554-7787). (Alamodome): April 2 (Detroit), April 8 (Denver), April 10 (Portland).

**San Antonio Missions** (baseball) (210-675-7275). Home opener (Nelson W. Wolff Municipal Stadium). April 3 - 7 (Midland).

**San Antonio Iguanas** (hockey) (210-227-4449). Playoffs during April: dates not set (Freeman Coliseum).

**San Antonio Dragons** (hockey) (210-737-7825). (Freeman Coliseum): April 4 (Ft. Wayne), April 5 (Ft. Wayne), April 9 (Long Beach).

**Six Flags Fiesta Texas** Theme Park (210-697-5050). Open weekends only in April [tentative] - call for info.

**Sea World of Texas** Theme Park (210-523-3611). Open weekends only in April [tentative] - call for info.

# CONFERENCE PROGRAM

## Thursday, April 3

**3:00 pm-10:00 pm**     **Executive Board Pre-Conference Meeting**  
*Georgian, Lobby Level*  
 Open to membership on a seating available basis.

## Friday, April 4

**8:30 am-5:30 pm**     **Executive Board Pre-Conference Meeting**  
*Georgian, Lobby Level*  
 Open to membership on a seating available basis.

**12:00 pm-6:00 pm**     **Registration Desk Open**  
*St. Anthony Club, Lobby Level*

**12:00 pm-6:30 pm**     **Internet Room Open**  
*Johnson, Third Floor*

**Tours I.     Tour 1. Downtown Architecture Lectures and Walking Tours**

Slide lecture in Crowne Plaza St. Anthony Hotel (*Ft. Worth, Third Floor*), 2:30 pm-3:00 pm and Walking tour, 3:00 pm-5:00 pm.

Limit: 15

Price: \$20.00

Includes professional guide.

[NOTE: Repeated on Wednesday, April 9 with different content and itinerary.]

Defying exact definition or categorization, San Antonio architecture has been called charming and picturesque, while others have said that it has a "certain flavor." Our guide has individually designed these architectural lectures and walking tours so that members could join both the Friday and Wednesday sessions, as each will be quite different.

On the Friday tour, members will leave the Crowne Plaza St. Anthony immediately after the slide lecture and walk in a northerly direction toward the Southwest Craft Center. The Wednesday tour participants will also leave the Crowne Plaza St. Anthony immediately following the slide lecture, but will walk

in the opposite direction toward the Alamo and La Villita. Our guide has done extensive research on San Antonio architecture, and she will concentrate on a mix of major sites and works of prominent local architects, along with some off-the-beaten path San Antonio gems. Be sure to wear comfortable shoes.

**1:00 pm-5:00 pm**     **RLG Art & Architecture Group Meeting**  
*Peraux, Lobby Level*  
 Open to AAG members only.

Coordinator: Susan Malkoff Moon, Head Librarian, Spencer Art Reference Library, Nelson-Atkins Museum of Art

**5:30 pm-7:00 pm**     **Committee Business Meetings I**  
 Finance - Ann Abid (*Jefferson Manor, Lobby Level*)  
 Nominating - BJ Irvine & Jeff Horrell (*Midland/Laredo, Third Floor*)  
 North American Relations - Claire Eike (*Bowie, Third Floor*)  
 Publications - Jeanne Brown & Judy Dyki (*Lafitte, Third Floor*)  
 Research - Amanda Bowen (*Alamo, Third Floor*)  
 Technology Education - Henry Pisciotta (*La Salle, Third Floor*)  
 Wittenborn Awards - Mona Chapin & Marilyn Berger (*Coronado, Third Floor*)

**6:30 pm-8:30 pm**     **SCIPIO Users Meeting**  
*Peraux, Lobby Level*

**8:00 pm-9:00 pm**     **Architectural Slide Lecture**  
*Jefferson Manor, Lobby Level*  
 Carolyn Peterson speaks on "Architectural Terracotta". Introduction by Janine Henri, Head Librarian, Architecture and Planning Library, The University of Texas at Austin

Carolyn Peterson is a principal with the firm of Ford, Powell and Carson in San Antonio. She has spent much of her thirty year architectural career focusing on historic preservation and adaptive reuse of historic buildings.

**9:00 pm-12:00 am**     **Hospitality Suite (Pete's Pub and River Walk)**

## Saturday, April 5

**7:30 am-6:00 pm**     **Registration Desk Open**  
*St. Anthony Club, Lobby Level*

**8:00 am-6:30 pm**     **Internet Room Open**  
*Johnson, Third Floor*

## Saturday, April 5

### **Tours II. Tour 2. The King William Historic District Walking Tour, 9:15 am-11:15 am**

Limit: 15

Price: \$20.00

Includes: Round trip transportation; professional guide.

The King William Historic District is an area of beautifully restored, architecturally significant homes constructed from approximately the late nineteenth century to the 1920s. The King William Area homes show a variety of influences including native, European, Greek Revival, Victorian, and Neoclassical. Guided by a member of the San Antonio Conservation Society, you will stroll through this lovely historic area of old San Antonio and learn the history of the area as well as the stories of the houses, their builders, their beginnings, and something of the people who lived in the King William Area throughout the years.

### **Tour 3. Texas Hill Country Adventure, 8:00 am-5:00 pm**

Limit: 45

Price: \$60.00

Includes: Round trip transportation via motorcoach; admission to Johnson Ranch; refreshments on board the bus; ARLIS/NA volunteer to assist.

Begin your Texas Hill Country Adventure in Johnson City, Texas with a brief stop at the birthplace of former U.S. President Lyndon B. Johnson. Continue to Stonewall, Texas, and visit President Johnson's ranch known as the "Texas White House". Nestled on the banks of the Pedernales River, this is an operating ranch. National Park Rangers will conduct a guided tour through the ranch and share interesting tales of the Johnson family. Don't forget your camera as the Texas wildflowers, especially bluebonnets, should be in full splendor.

Continue on through the beautiful Texas Hill Country to Fredericksburg, a quaint German community founded in the mid-nineteenth century. Experience delicious ethnic cuisine on your own at one of the many restaurants.

After lunch, enjoy shopping at the charming shops and boutiques displaying handcrafted wares and antiques. Time permitting, end the day's adventure with a visit to a Hill Country winery.

## Saturday, April 5

### **Tour 4. San Antonio Spanish Colonial Missions, 8:00 am-12:00 noon**

Limit: 45

Price: \$25.00

Includes: Round trip transportation via motorcoach; professional guide.

[NOTE: Repeated on Wednesday, April 9th]

Among San Antonio's treasures are its Spanish Colonial missions. Founded in the eighteenth century by the Franciscans, these colonial outposts live still as active parishes and are reminders of Spain's attempts to extend its dominion northward from Mexico. ARLIS/NA tour participants will travel down The Mission Trail and visit Missions Concepcion, San Juan Capistrano, Espada, and San Jose, sometimes viewed as the model among the Texas missions. Near Mission Espada, members will visit the Espada Aqueduct, one of the oldest arched Spanish aqueducts in the United States. Before touring Mission San Jose, members will visit the National Park Service visitor center and view an excellent film on the history of South Texas Indians.

### **Tour 5. The Alternative Tour of San Antonio, 9:00 am-12:00 noon**

Limit: 45

Price: \$20.00

Includes: Round trip transportation via motorcoach; professional guide.

[NOTE: Repeated on Wednesday, April 9th]

This tour is for lovers of folk art, yard art, and other alternative art forms. Tour highlights will include concrete, rustic tree-structures of the 1930s by Dionicio Rodriguez, and an early "Pig Stand" restaurant, built in the shape of a pig. Also featured are a yard filled with birdhouses in the form of miniature buildings and monuments, as well as murals, yard shrines, and eccentric architecture. If you enjoy the creativity that flourishes outside of the mainstream art world, this tour is a must.

### **Tour 6. San Antonio Art Tour, 10:00 am-5:00 pm**

Limit: 45

Price: \$38.00

Includes: Round trip transportation; admission fees to all museums listed; ARLIS/NA volunteer to assist.

## Saturday, April 5

Begin this exciting tour at the Blue Star Arts Complex. Located in San Antonio's Southtown, next to the King William Historic District, the Blue Star Arts Complex includes the Blue Star Art Space, an 11,000 square foot artist-run, non-collecting, contemporary art museum, in addition to several art galleries and artists' studios. A founding member of the Blue Star Arts Complex will be your guide. Enjoy a delicious lunch on your own at the Blue Star Brewing Company or at another nearby restaurant.

Continue on to the San Antonio Museum of Art. Housed in the historic Lone Star Brewery, built in 1884, this 104,000 square-foot facility is one of San Antonio's finest museum spaces. Accompanied by knowledgeable guides, you will tour the museum's collection of Greek and Roman Antiquities; Asian, Latin American, and Folk Art; and European and American paintings.

Your next stop will be the McNay Art Museum. Located on twenty-three acres of land, the McNay is a Spanish Mediterranean-inspired home originally designed by noted architects Atlee B. Ayres and Robert M. Ayres. Today, the McNay's collection numbers more than 7,000 objects including Marion Koogler McNay's art collection of French Post-Impressionist paintings and early nineteenth century European artists. You will be accompanied by expert guides and learn about the McNay's history as well as its superb collection.

### **Tour 7. The Collection of Mr. and Mrs. Hugh Halff, Jr., 1:00 pm-4:00 pm**

Limit: 45

Price: \$25.00

Includes: Round trip transportation; ARLIS/NA volunteer to assist.

Recognized today as major art collectors on the national scene, Mr. and Mrs. Hugh Halff, Jr. will graciously open their home to tour participants of ARLIS/NA to view their private collection of American Impressionism.

The Halffs have carefully assembled their collection over the past fifteen years, and included in their superb collection are works by Frederick Childe Hassam, Theodore Robinson, and William Merritt Chase. Over the past summer, Mr. and Mrs. Halff's collection of American Impressionism formed the basis for the San Antonio Museum of Art exhibition "The Age of Innocence: American Impressionism and Its Influence."

## Saturday, April 5

9:00 am-5:00 pm

### **Workshops**

Both workshops will be held at the San Antonio Public Library (600 Soledad Street) which is within walking distance (6 blocks) of the Crowne Plaza St. Anthony Hotel. Box lunches will be provided for all workshop participants. Access to the library prior to 9:00 am is at the Southeast corner of the building (Gallery and Auditorium Entrance). If you plan to use the library parking garage, please be advised there is a charge and the garage observes the library's hours.

### **Workshop I. The Web and HTML**

*San Antonio Public Library (Fourth Floor Training Room)*

Enrollment Limit: 15 (a pc workstation will be available for each participant)

Price: \$85.00

[Note: Repeated on Wednesday, April 9]

#### **Part I (1.5 Hours)**

This part of the workshop will focus on securing an institutional homepage from an administrative point of view. It will include planning and managing hardware and software, obtaining Internet accounts, staffing, budgets, analysis, maintenance, and growth. Participants will surf the Net and explore examples of effective and ineffective Websites.

#### **Part II (4.5 hours)**

This part of the workshop will focus on the basics of HTML (HyperText Markup Language) including information about getting on the Web and using HTML editors. There will be a hands-on demonstration of HTML coding such as page requirements, text manipulation, images, and hyperlinks. An overview of more advanced features will also be discussed and a bibliography of references for further exploration will be distributed.

Co-Sponsors: Computer Section and Technology Education Committee

Workshop Leaders: Annette Haines, Library Assistant III, Michigan State University

Carole Pawloski, Visual Resources Librarian, Assistant Professor, Eastern Michigan University

Jennifer L.S. Moldwin, Head Librarian, The Detroit Institute of Arts Research Library

## Saturday, April 5

### Workshop II. **Sharper and Clearer: Focusing Your Presentation Skills**

San Antonio Public Library (Auditorium, First Floor)

Enrollment Limit: 15

Price: \$115.00

Whether giving a library tour, conducting a bibliographic instruction session, engaging in a reference interview, training a new employee, or making an oral presentation to a Board of Trustees, all librarians employ various forms of verbal and non-verbal communication. Many of us, however, seldom have the opportunity for guidance and feedback on our public speaking skills. The purpose of this workshop is to help librarians develop more effective oral presentation skills. The format of the workshop will include a lecture/demonstration, followed by a voluntary videotaping session and evaluation. While the workshop will focus on presentation skills for reference or bibliographic instruction, the content of the lecture and the videotaping experience will be relevant to all librarians.

Participants who have indicated that they would like to be videotaped will then present (not read!) a prepared three minute talk on a topic of their choice to the group, in front of the camera. Following a lunch break, workshop participants will view the videotaped presentations. The workshop leader will offer comments and suggestions for each presentation and solicit feedback and dialogue from the group. Further discussion will re-emphasize essential skills and, if time allows, a few participants may have the opportunity to re-do their presentations.

Sponsor: Reference and Information Services Division

Workshop Leader: Erin Porter, PhD., Center for Teaching Effectiveness, University of Texas at Austin

### 10:00 am-12:00 pm **Museum Services Meeting**

Jefferson Manor, Lobby Level

### 12:30 pm-2:00 pm **Committee Business Meetings II**

Awards - Mary Williamson (Lafitte, Third Floor)

Cataloging Advisory - Daniel Starr (Coronado, Third Floor)

International Relations - Murray Waddington & Leslie Abrams (Midland/Laredo, Third Floor)

Membership - Liz Ginno & Suzanne Freeman (Bowie, Third Floor)

Professional Development - Marilyn Russell-Bogle & Norma M. Johnson (Alamo, Third Floor)

Public Policy - Katy Poole & Hinda Sklar (La Salle, Third Floor)

Standards - Eileen Fry (Jefferson Manor, Lobby Level)

## Saturday, April 5

### 2:15 pm-3:45 pm

#### **Committee Business Meetings III**

AAT Advisory - Debbie Kempe (Lafitte, Third Floor)

Collection Development - Ann Whiteside (Coronado, Third Floor)

Diversity - Pedro Figueredo & Pat Thompson (Midland/Laredo, Third Floor)

Development - Merrill Smith & Barb Polowy (Bowie, Third Floor)

Gerd Muehsam Award - Eumie Imm Stroukoff & Jennifer Moldwin (Alamo, Third Floor)

Technology Relations - Floyd Sweeting & Susan Jurist (Houston, Third Floor)

Travel Awards - Ann Lindell & Kathryn Wayne (La Salle, Third Floor)

### 3:00 pm-3:45 pm

#### **New Members and First Time Attendees Orientation Meeting**

Georgian, Lobby Level

Jack Robertson, President and Roger Lawson, Vice-President/President Elect

### 4:00 pm-6:00 pm

#### **Session 1.**

#### **Panel Sessions I**

#### **Art and Architecture Initiatives at RLG**

Travis, Mezzanine

Moderator: Nancy S. Allen, Director of Information Resources, Museum of Fine Arts, Boston

Sponsor: Susan Malkoff Moon, Head Librarian, Spencer Art Reference Library, Nelson-Atkins Museum of Art

Abstract: The Research Libraries Group has always had a strong commitment to art and architectural collections from its earliest days. This session will show the breadth and range of RLG's art and architectural resources and how individual institutions are using them. The panelists will discuss several areas, including digital imaging initiatives accessible via the Web, maneuvering through Eureka to find information across information formats, administrative and technological concerns, the description and access of multi-format collections, and finally, how individual institutions are providing greater access to their own collections while enriching art and architectural resources for all RLIN researchers.

Panelists: La Vonne F. Gallo, RLG, Instructional Services Manager  
Katharine Chibnik, Associate Director & Head of Access & Support Services, Columbia University, Avery Library

*Penne Dearshul  
Tull Rachel + Sarah  
Eumie*

## Saturday, April 5

Murray Waddington, Chief Librarian, National Gallery of Canada  
Jim Coleman, Head, Academic Computing for the Humanities,  
Stanford University  
Nancy S. Allen, Museum of Fine Arts, Boston

### Session 2. **Should a Moment Last Forever?**

*Peraux, Lobby Level*

Moderator: Henrietta Zielinski, Flaxman Library, School of the Art Institute of Chicago

Sponsor: New Art Round Table

Abstract: The "whatness" of art that is designed as ephemeral – art that has the "momentary" aspect as a principal element is the subject for this panel discussion.

The panel, consisting of two artists, an art historian, a librarian, and critic or curator, will focus on the problems faced in collecting, preserving, archiving intentionally ephemeral works – works designed for specific time/space constructs. For example, in regards to electronic art, should it be captured, downloaded, and potentially be put through format changes? Do libraries have the right to assume the responsibility of "preservation" for artists working with installation art, time arts, and performance art?

How can libraries, educators, and artists network, share, and access information about such resources and documentation? Will libraries be conventional repositories or a performance space for audience (patron) interaction with this material? How do we handle "intermedia" whose constant is change in a continuum without spatial dimension but virtual reality?

Panelists: Simon Anderson, Assistant Professor, Art History, Theory and Criticism, School of the Art Institute of Chicago. Fluxus scholar working on a biography of George Maciunas.

Anne Britton, Assistant Librarian, Museum of Modern Art, New York. Currently working on a three-year project to process the Franklin Furnace archive of artists' books.

Lou Mallozzi, Adjunct Assistant Professor, 4-D, School of the Art Institute of Chicago. Founding member and Associate Director, Experimental Sound Studio, Chicago

Performance, audio, and installation artists: Michael Paha. Nationally exhibited artist working in sculpture and installation art. His work uses living environment to provide another "peripheral" view of co-existing life: "remembrance" as a catalyst for interpretation, and activities based on chance.

Martha Wilson, Founder and Director, Franklin Furnace, New York

## Saturday, April 5

### Session 3. **Women Artists of the Southwestern U.S.**

*Jefferson Manor, Lobby Level*

Moderator: Bonnie Reed, Fine Arts Librarian, Texas Tech University Libraries

Sponsor: Women and Art Round Table

Abstract: This program considers the contribution of contemporary women artists of the Southwestern United States with an emphasis upon Hispanic culture.

Panelists & Topics: Dr. Don Bacigalupi, Director and Chief Curator, Blaffer Gallery, University of Houston, will discuss the "vast array of art being produced by the women of the Southwest. Highlighted will be women artists in the past twenty years and the massive move of the artists, once marginalized, into the mainstream of art world attention."

Chris Cowden, Executive Director, The Center for Women and Their Work, Austin, TX, will discuss the history and contributions of The Center for Women and Their Work, emphasizing programs developed by The Center.

Kathy Vargas, Artist/Photographer, San Antonio, TX, will introduce her art work which "deals with ritual and memory in day-to-day life."

Lilian Garcia-Roig, artist and Assistant Professor, University of Texas, Austin, TX, will introduce her work which involves "plein air painting of landscapes and reconciling the abstract and illusionistic qualities of painting."

**6:00 pm-6:45 pm**

**Transportation by bus to Beethoven Hall Convocation from the Crowne Plaza St. Anthony**

**6:45 pm-8:00 pm**

**Convocation at Beethoven Hall. Transportation by bus to San Antonio Public Library for Reception.**

**8:00 pm-10:30 pm**

**Reception at San Antonio Public Library, sponsored by the Dictionary of Art.**

Southwestern party complete with mariachi band. Transportation by bus back to Crowne Plaza St. Anthony

**10:30 pm-12:00 am**

**Hospitality Suite (Pete's Pub and River Walk)**

**10:30 pm-12:00 am**

**Serials Swap I**

*Travis, Mezzanine*

Coordinator: Gisele Guay, Head of Serials, Canadian Centre for Architecture Library

The Serials Swap is open to all ARLIS/NA members who wish to exchange duplicate issues of periodicals.

## Saturday, April 5

2:00 am

### Daylight Savings Time

Just a reminder that Daylight Savings Time begins at 2:00 a.m. on Sunday, April 6. Please remember to move your clock/watch forward one hour so that you do not miss any conference sessions or activities.

## Sunday, April 6

7:00 am-7:45 am

### Yoga Under the Big Sky

*Pool Deck, Sixth Floor*

Presented by BJ Irvine. Wake up your body and mind with a series of gentle stretches based on Yoga and related systems of exercise. Practice includes both deep breathing and positions of physical ease (Yoga asanas or postures). These morning sessions can be enjoyed by those who have not had prior Yoga classes, as well as by more experienced practitioners.

7:30 am-4:30 pm

### Registration Desk Open - \*New Location\*

*Anacacho Foyer, Lobby Level*

8:00 am-6:30 pm

### Internet Room Open

*Johnson, Third Floor*

8:00 am-9:30 am

### Business Meetings:

*Round Tables*

Decorative Arts - Jean Hines (*Coronado, Third Floor*)

Film and Video - Alison Pinsler (*Midland/Laredo, Third Floor*)

Gay and Lesbian Interests - Gregory P.J. Most (*Lafitte, Third Floor*)

Indigenous Art and Culture - Madelyn Cook (*Houston, Third Floor*)

New Art - Henrietta Zielinski (*Bowie, Third Floor*)

Serials - Gisele Guay (*Alamo, Third Floor*)

Space Planning - Amy Gale (*La Salle, Third Floor*)

Women and Art - Bonnie Reed (*St. Anthony Club, Lobby Level*)

9:45 am-11:15 am

### Divisions

Academic Library - Lorelei Tanji (*Travis, Mezzanine*)

Art and Design School Library - Sara MacDonald (*Midland/Laredo, Third Floor*)

Museum Library - Evalyn Stone (*Georgian, Lobby Level*)

Public Library - Suzy Frechette (*Houston, Third Floor*)

Visual Resources - Linda Bien (*Jefferson Manor, Lobby Level*)

## Sunday, April 6

11:30 am-1:00 pm

### Sections

Architecture - Kitty Chibnik (*Travis, Mezzanine*)

Cataloging - Kay Teel (*Georgian, Lobby Level*)

Computer - Peggy Keeran (*St. Anthony Club, Lobby Level*)

Reference and Information Services - Ophelia Roop (*Jefferson Manor, Lobby Level*)

12 noon-5:00 pm

### Exhibits Set-up

*Anacacho Ballroom, Lobby Level*

2:00 pm-3:30 pm

### Ask ARLIS I.

**Ask ARLIS 1.**

### Copyright, Development, and Collection Development

*Travis, Mezzanine*

Moderator: Janine Henri, Head Librarian, Architecture and Planning Library, The University of Texas at Austin

Sponsor: Collection Development Committee

Abstract: The University of Texas at Austin's collections have been given a prominent role in the University's development efforts: reproductions of archival materials are finding their way onto flyers, invitations, announcements, commencement brochures, Web pages, letterhead, and more. This Ask ARLIS will examine how copyright issues affect our collection development and what our development efforts have taught us about the importance of addressing copyright when acquiring archival materials.

Contributors: Carole Cable, Deputy Assistant Director, Library Development & Publications, The University of Texas at Austin, General Libraries

Beth Dodd, Curator, Architectural Drawings Collection, The University of Texas at Austin

Georgia Harper, General Counsel, The University of Texas System

Cathy Henderson, Research Librarian, Harry Ransom Humanities Research Center, The University of Texas at Austin

**Ask ARLIS 2.**

### Apples and Oranges: Juggling Visual and Verbal Reference Queries

*Georgian, Lobby Level*

Co-Moderators: Greta Earnest, Art & Architecture Librarian, Pratt Institute

Jill Patrick, Library Director, Ontario College of Art and Design

Sponsor: Art and Design School Library Division

## Sunday, April 6

Abstract: Does providing reference work for art, design, and architecture students set forth a particular set of issues? This AskARLIS brings together representatives with varying relationships to this question including an artist, a librarian, and professors of art and education. If interest warrants, the follow-up to the session will be to create a checklist identifying interviewing techniques and curricular goals in library instruction classes.

Contributors: Tim Litzmann, Artist, New York, NY

Philip Pacey, Subject Team Leader, Library & Learning Resources, University of Central Lancashire

Gloria Lee, Assistant Professor, University of Texas at Austin

### Ask ARLIS 3.

#### **Call to Action: What Can WE DO to Educate Future Art Librarians and Visual Resources Professionals?**

*Peraux, Lobby Level*

Co-Moderators: Marilyn Russell-Bogle, Fine Arts Librarian, University of Minnesota-Duluth

Norma Mosby Johnson, Fine Arts Librarian, University of Arkansas

Sponsor: Professional Development Committee

Abstract: Recent Professional Development Committee surveys on the education of art librarians are alarming. Survey results seem to indicate that few library schools are offering courses in art/visual resources librarianship and that no internships are being sponsored by other library groups. Come, listen, and discover how we can offset these trends.

Contributors: Lou Adrean, Assistant Librarian for Public Services, Cleveland Museum of Art

Carol Graney, Associate Director, University of the Arts Library

Max Marmor, Director, Yale Art and Architecture Library

David Gracy, Professor, University of Texas at Austin Library School

### 2:00 pm-3:30 pm

#### **Discussion Group.**

#### **Cataloging Problems Discussion Group**

*Alamo, Third Floor*

Moderator: Sherman Clarke, Head of Original Cataloging, NYU

Abstract: Open discussion of cataloging and authority control issues, with reports from ARLIS/NA representatives to ALA committees, etc. The OCLC macro for creating NACO records will be demonstrated and discussed by Mary Jane Cuneo, Fine Arts Library, Harvard University.

## Sunday, April 6

### 3:45 pm-5:45 pm

#### **Session 4.**

#### **Panel Sessions II**

#### **Under Exposed: 19th Century Photography**

*Jefferson Manor, Lobby Level*

Moderator: Peter Blank, Librarian, Art and Architecture Library, Stanford University

Sponsor: Museum Library Division

Abstract: "The new art has been discovered to fix these wonderful images, which have hitherto past away volatile – evanescent as a dream – to stop them, at our will, on a substance finely sensible to the immediate action of light, and render them permanent before our eyes, in traces represented by tints in perfect harmony on each point with different degrees of intensity. ... Nor can this astonish us when the radiant light, which can only act according to the immutable laws of nature, substitutes its rays for the hesitating pencil of the artists." In this session, we hope to rediscover the honest expression of amazement this 1839 New York writer had for the new medium. We will examine the history, research, and unique characteristics of nineteenth century photography.

Panelists: Roy Flukinger, Senior Curator of Photography and Film, Harry Ransom Humanities Research Center, University of Texas at Austin

Rachel Stuhlman, Librarian, George Eastman House: International Museum of Photography and Film

Amy Rule, Archivist, Center for Creative Photography

Julie Mellby, Assistant Curator, Department of Printing and Graphic Arts, The Houghton Library, Harvard University

#### **Session 5.**

#### **Publish and Perish: Editors and Librarians on the Production of Art Books for the 90s, Part 1**

*Georgian, Lobby Level*

Co-Moderators: Inge Reist, Frick Art Reference Library

Lee Sorensen, Art Bibliographer, Lilly Library, Duke University

Sponsor: Collection Development Committee

Abstract: Editors and art librarians rarely exchange thoughts on their ideas and criteria for selecting books to publish and purchase. Ironically, librarians as information brokers are often in the best position to recommend – and author – useful books (or data systems) for art. This session assembles four art book editors and a collection development person to address 1) what is expected of art publications of today, 2) what publishers look



## Sunday, April 6

for in new titles, 3) what steps publishers follow in selecting subjects, authors, manuscript approval, and editing, 4) how librarians might advise publishers on the needs of their users, targeting readers, and noting areas where publishers duplicate each others' efforts, and 5) how librarians might advise users on designing proposals.

Panelists: Thomas Heneage, Publisher and Book Dealer, London  
Nancy Grubb, Executive Editor, Abbeville Press, New York  
Mark Greenberg, Managing Editor, Getty Museum Publications, Los Angeles  
Paul Baxter, Curator, Art & Architecture Collection, New York Public Library

### Session 6. **Stopping to Smell the Reasons: Considerations on the Way to the Web**

*Travis, Mezzanine*

Moderator: Henry Pisciotta, Head of Fine Arts and Special Collections, Carnegie Mellon University Libraries

Sponsor: Technology Education Committee

Abstract: Many arts information professionals have authored Web pages because they are committed to marketing their services and because the World Wide Web offers unique opportunities for doing so. This session provides both practical and theoretical views of the advantages and disadvantages of graphic hypertext as a communication tool. Panelists who have designed successful arts information Web sites will discuss the goals of their projects, what they have learned about the medium, and how this unusual medium may have influenced their original plans. A respondent will discuss the characteristics of this new form of communication (reading and viewing as a discontinuous, non-linear process; identifying and addressing multiple types of audience; authoring as a distributed activity, etc.) citing examples from the sites presented. Ample time will be provided for discussion. The Web sites will be described but not demonstrated. Attendees are encouraged to examine them in advance, though doing so will not be essential to understanding the presentation.

Panelists: Martin Aurand, Architecture Librarian and Archivist, Carnegie Mellon University Libraries, (Archival pages: <http://www.library.cmu.edu>)

Jane Carlin, Design, Architecture, Art & Planning Librarian and Acting Head of Training and Educational Services, University of Cincinnati

## Sunday, April 6

Libraries (U.C. Libraries pages: <http://www.libraries.uc.edu>)

Mary Molinaro, Team Leader, W. T. Young Library Information Services, University of Kentucky Libraries

(Artsource: <http://www.uky.edu/Artsource/artsourcehome.html>)

Respondent: John Slatin, Director of the Computer Writing and Research Lab and Associate Professor, University of Texas at Austin

**5:45 pm-7:45 pm**

**Exhibits Opening Party, sponsored by F.A. Bennett, Inc.**  
*Anacacho Ballroom & Peraux, Lobby Level*

**5:45 pm-7:45 pm**

**Poster Display**  
*Anacacho Ballroom Stage, Lobby Level (See poster titles under General Information)*

**7:45 pm**

**Transportation by bus to the Southwest Craft Center**

**7:45 pm-10:30 pm**

**Ars Libri Reception and ARLIS/NA 25th Anniversary Celebration**

Dining, dancing, and, at the Southwest Crafts Center weather permitting, river barge rides.

This event, sponsored by Ars Libri, will have special anniversary features including a raffle.

**10:30 pm**

**Transportation back to the Crowne Plaza St. Anthony by bus**

**10:30 pm-12:00 am**

**Hospitality Suite (Pete's Pub and River Walk)**

## Monday, April 7

**7:00 am-7:45 am**

**Yoga Under the Big Sky**

*Pool Deck, Sixth Floor*

Presented by BJ Irvine. Wake up your body and mind with a series of gentle stretches based on Yoga and related systems of exercise. Practice includes both deep breathing and positions of physical ease (Yoga asanas or postures). These morning sessions can be enjoyed by those who have not had prior Yoga classes, as well as by more experienced practitioners.

**7:30 am-9:30 am**

**Chapter Officers' Breakfast**

*St. Anthony Club, Lobby Level*

Coordinators: Betsy Learned, Northeast Regional Representative  
Stephanie Sigala, Midwest Regional Representative

Breakfast and discussion about management issues and strategic planning initiatives. (Open to chapter officers and Executive Board members only.)

## Monday, April 7

8:00 am-9:30 am

### **Serials Swap II**

*Jefferson Manor, Lobby Level*

Coordinator: Gisele Guay, Head of Serials, Canadian Centre for Architecture Library

### **AAT User's Group**

Moderator: Elisa Lanzi, Manager, Art & Architecture Thesaurus

Dutch Treat Breakfast

*Location TBA*

7:00 am-8:00 am

### **Continental Breakfast Sponsored by H. W. Wilson**

*Loggia, Lobby Level*

Presentation and product demonstration by the editor.

8:00 am-4:00 pm

### **Registration Desk Open**

*Anacacho Foyer, Lobby Level*

8:00 am-6:30 pm

### **Internet Room Open**

*Johnson, Third Floor*

8:30 am-12:00 noon

### **Exhibits Open - coffee service sponsored by Sanderson Computers**

*Anacacho Ballroom, Lobby Level*

8:30 am-12:00 noon

### **Poster Display**

*Anacacho Ballroom Stage, Lobby Level*

*(See poster titles under General Information)*

9:30 am-11:30 am

### **Panel Sessions III**

#### **Session 7.**

### **The Changing Face of Reference - Electronic Reference Services: Case Studies**

*Travis, Mezzanine*

Moderator: Joan Stahl, Coordinator, Image Collections, National Museum of American Art

Sponsor: Reference and Information Services Section

Abstract: Public service librarians traditionally provide reference assistance in response to telephone, mail, and in-person queries. Now that more staff have e-mail addresses, libraries have World Wide Web sites and web catalogs, and library patrons have greater familiarity with and access to new technologies, librarians can expect to receive reference questions electronically from patrons who expect to receive an electronic response. Is electronic reference an extension of what librarians have always done, or is it a new service (perhaps addressing the needs of a new audience) that requires planning, development, funding, and additional staffing? The panelists all work with

## Monday, April 7

advertised electronic reference services. Each will explain the service, covering frequently asked questions about staffing, distribution of questions, maintenance of electronic files, statistics, training, user profiles, and typical questions, among other topics.

Panelists: Ilene Frank, Reference Librarian, University of South Florida, Tampa

Nettie Lagace, Reference Coordinator, Internet Public Library

Robin Summers, AskERIC Coordinator, AskERIC

Joan Stahl, Coordinator Image Collections, National Museum of American Art

#### **Session 8.**

### **The Literature and Images of Mexican Art - Historical and Contemporary**

*St. Anthony Club, Lobby Level*

Moderator: Deirdre E. Lawrence, Principal Librarian/Coordinator of Research Services, The Brooklyn Museum Libraries and Archives

Sponsor: Deirdre Lawrence

Abstract: This session will cover key components of the literature of Mexican Art. Speakers will highlight the development of library collections in this area, iconography, and the bibliographic tools used for research, artist book production, and how research material on Mexican art can be used as interpretive material in exhibits.

Panelists & Topics: Elsa Barbarena. "Sor Juana, sus pinturas su lugar, y su mundo," Sor Juana and the development of the first library in Mexico.

Freddy Aguilar Reyes, The Library at the Museo de Arte Contemporaneo de Oaxaca. Discussion of the library collection at the Museo de Arte Contemporaneo de Oaxaca including the history of the collection and the types of materials they acquire. (This paper will be presented by one of the panelists in attendance.)

Clayton Kirking, Director, Parsons School of Design. Various iconographic images found in Mexican art, such as saints, virgins, and angels along with their bibliographic resources.

Beverly Karno, Howard Karno Books. Survey of the evolution of artists' books in Mexico, focussing on the artists, publishers, and collections, as well as important exhibitions.

## Monday, April 7

Deirdre Lawrence, Principal Librarian, Brooklyn Museum Libraries.  
How library research material was used to interpret Latin American art in two recent exhibits at The Brooklyn Museum.

### Session 9. **False Economies: Balancing Quality and the Bottom Line in Providing Access to Our Collections**

*Georgian, Lobby Level*

Moderator: Sherman Clarke, Head of Original Cataloging, New York University

Co-Sponsors: Cataloging Section & Academic Library Division

Abstract: The pressure to reduce backlogs and process new acquisitions more quickly has encouraged library administrators to identify and explore innovative methods for processing materials. Catalogers and reference librarians are concerned about the loss of control over processing and the compromised quality of the final product. Panelists will describe and evaluate three of these innovations: vendor-supplied shelf-ready processing, automated batch searching for cataloging copy, and "core" level cataloging.

Panelists: Peter Blank, Art and Architecture Librarian, Stanford University

Rick Lugg, Vice President for Library System Services, Yankee Book Peddler

Anne Champagne, Head of Technical Services, Art Institute of Chicago

Linda Kruger, Supervisor, Art and Architecture Cataloging, Columbia University (Retired)

**11:30 am-1:30 pm** **Visual Resources Issues Task Force**  
*Coronado, Third Floor*

**11:30 am-12:30 pm** **Discussion Groups**

#### **Topic 1. The External Relations Committees: How ARLIS/NA Networks on Your Behalf**

*Jefferson Manor, Lobby Level*

Co-Moderators: Claire Eike, Director, Flaxman Library, The School of the Art Institute of Chicago

Murray Waddington, Chief Librarian, National Gallery of Canada

Co-sponsors: North American Relations Committee & International Relations Committee

Abstract: Three ARLIS/NA committees established in 1996 (North American Relations Committee, Public Policy Committee, and Technology Relations Committee), as well as the International Relations Committee, are charged with monitoring the

## Monday, April 7

activities of or establishing liaison with external agencies, associations, and institutions of interest to the Society.

Representatives from these four committees will describe their activities during the past year which have helped to establish better communication between these organizations and ARLIS/NA, as well as the committees' plans for the future. Presentations will be followed by a group discussion. Participants will include representatives from ARLIS/NA's headquarters and the Executive Board, along with ARLIS members in attendance. This discussion will allow the membership to comment on the effectiveness and usefulness of the work accomplished as well as make suggestions for future action. (open to all)

#### **Topic 2. Public Library Division Discussion Group**

*Georgian, Lobby Level*

Moderator: Suzie Frechette, Fine Arts Librarian, St. Louis Public Library

Abstract: This discussion group is open to Public Libraries Division members and any others interested in the issues facing the Division and public art librarians today. It will be an informal meeting, in which topics of mutual interest to the participants will be addressed.

**1:30 pm-3:30 pm**

#### **Membership Meeting (No Luncheon)**

*Travis Park United Methodist Church Sanctuary -*

*Across the street from the Crowne Plaza St. Anthony Hotel*

**3:30 pm-6:00 pm**

#### **Exhibits Open**

*Anacacho Ballroom, Lobby Level*

**3:30 pm-6:00 pm**

#### **Poster Display**

*Anacacho Ballroom Stage, Lobby Level (See poster titles under General Information)*

**4:00 pm-5:30 pm**

#### **Ask ARLIS II**

**Ask ARLIS 4.**

#### **What Can Art/Architecture Librarians and Visual Resources Curators Learn From Each Other?**

*Travis, Mezzanine*

Co-Moderators: Ann Whiteside, Visual Resources Librarian, Frances Loeb Library, Harvard Graduate School of Design

Margaret Webster, Slide Librarian, College of Architecture, Art and Planning, Cornell University

Co-Sponsors: Visual Resources Division & Visual Resources Issues Task Force

Monday, April 7

Abstract: The world of book and visual material collections evolved separately, often in isolation from each other. With the recent development of digital technologies and their integration into both the library and academic environments, the traditional boundaries between book libraries and visual resource collections are blurring. Libraries now collect image products which in the past were the purview of visual resource collections.

Conversely, visual resource collections, as they become available in digitized form, are available to broad audiences as rich study and research tools. The boundaries are no longer definitive; we need to share our knowledge and expertise to work together to provide access to many different types of materials in a variety of settings.

Contributors: Deborah A. Kempe, Chief, Office of Collections Management and Access, Frick Art Reference Library

Merrill Wadsworth Smith, Associate Rotch Librarian, Rotch Library of Architecture and Planning, MIT

Joy A. Blouin, Curator, Slides and Photos, Department of the History of Art, University of Michigan

Margaret N. Webster, Slide Librarian, College of Architecture, Art and Planning, Cornell University

Martha R. Mahard, Curator, Visual Collections, Fine Arts Library, Harvard College Library, Fogg Museum

**Ask ARLIS 5. Museum Libraries as Information Centers**

*Georgian, Lobby Level*

Moderator: Ursula Kolmstetter, Librarian, Indianapolis Museum of Art

Contributors: Jeannette Dixon, Museum of Fine Arts, Houston

Suzanne Freeman, Virginia Museum of Fine Arts

Jennifer Moldwin, Detroit Institute of Arts

Sponsor: Museum Library Division

Abstract: This Ask ARLIS will focus on the changing role of museum libraries and their librarians. The discussion will include: 1) Consortia with other types of libraries; 2) Becoming more visible: the promotion of public access and community outreach; 3) Museum librarian as "webmaster"; 4) "Micro-galleries"

*Meet Cathy Aker session re: Coll. Dev.*  
6:30 pm-10:00 pm

**An Evening of Food, Fun, Art, and Architecture**

Take advantage of this free evening to tour either Southwestern Bell's collection of twentieth-century American art or visit the San

Monday, April 7

Antonio Public Library for an in-depth behind-the-scenes tour of this recently opened facility designed by Ricardo Legorreta in combination with an opportunity to explore the San Antonio River Walk where you will find many fine dining and nightclub options available to you. Both tour events require registration at the conference registration desk and are limited as noted below.

**1) Southwestern Bell's Collection of Twentieth-Century American Art**

Southwestern Bell's collection of twentieth-century American art (including works by Georgia O'Keeffe, Edward Hopper, Arthur Dove, Man Ray, Charles Sheeler, Stuart Davis, Mark Rothko, Helen Frankenthaler, Al Held, and Claes Oldenburg) will be available for up to 150 conferees to tour at SBC's corporate offices just two blocks from the Crowne Plaza St. Anthony Hotel. SBC staff will provide three, one-hour tours highlighting the major works in the collection. A copy of the catalog of the collection will be available at the registration desk for your perusal. Tour times are as follows and each tour will be limited to 50 participants. Directions to the collection will be provided upon registration. Transportation is on your own.

**Tour 1 6:30 pm-7:30 pm**

**Tour 2 7:30 pm-8:30 pm**

**Tour 3 8:30 pm-9:30 pm**

**2) Beyond the Stacks: A Behind-the-Scenes Introduction to the San Antonio Public Library and its Design Process**

Craig Zapatos, Central Library Manager, will conduct an in-depth tour of the new San Antonio Public Library designed by Ricardo Legorreta. Tour participants will have access to all public and non-public areas throughout the seven floors of the building. Mr. Zapatos has been involved with the project since its inception and will be able to provide information on the design competition, his involvement with selecting the architectural team, the construction process, and the success of the project. One tour will be offered and will be limited to 60 participants. Directions to the San Antonio Public Library will be provided upon registration. Transportation is on your own.

**Tour time 6:30 pm-8:45 pm**

*Dinner Santa*

## Monday, April 7

- 10:00 pm-12:00 am Hospitality Suite (Pete's Pub and River Walk)**
- 10:15 pm-11:45 pm Serials Swap III.**  
*Travis, Mezzanine*  
Coordinator: Gisele Guay, Head of Serials, Canadian Centre for Architecture Library

## Tuesday, April 8

- 7:00 am-7:45 am Yoga Under the Big Sky**  
*Pool Deck, Sixth Floor*  
Presented by BJ Irvine. Wake up your body and mind with a series of gentle stretches based on Yoga and related systems of exercise. Practice includes both deep breathing and positions of physical ease (Yoga asanas or postures). These morning sessions can be enjoyed by those who have not had prior Yoga classes, as well as by more experienced practitioners.
- 7:30 am-4:00 pm Registration Desk Open**  
*Anacacho Foyer, Lobby Level*
- 8:00 am-6:30 pm Internet Room Open**  
*Johnson, Third Floor*
- 7:30 am-9:30 am Leadership Breakfast**  
*St. Anthony Club, Lobby Level*  
Coordinator: Roger Lawson, ARLIS/NA Vice-President/President-Elect  
Breakfast and discussion about management issues and strategic planning initiatives; for group leaders including committee chairs, Division and Section moderators, Round Table coordinators, publications editors, Web master, Executive Board, and management staff.
- 8:00 am-12:00 noon Exhibits Open - coffee sponsored by University Publications of America**  
*Anacacho Ballroom, Lobby Level*
- 8:00 am-12:00 noon Poster Display**  
*Anacacho Ballroom Stage, Lobby Level*  
(See poster titles under General Information)

## Tuesday, April 8

- 9:45 am-11:45 am Panel Sessions IV**
- Session 10. Texas Twists: Regionalism in Texas Architecture**  
*Georgian, Lobby Level*  
Moderator: Margaret Culbertson, Head, Jenkins Architecture & Art Library, University of Houston  
Sponsor: Architecture Section  
Abstract: Texas contains many fascinating and intriguing examples of regionalism in both old and new buildings. Regional aspects of the state's architecture can be traced to a variety of factors, including climatic conditions, available building materials, and historical stylistic influences. Manifestations of this regionalism can range from subtle adaptations, such as the sensitive arrangement of windows to take advantage of prevailing winds, to obvious stylistic quotations, such as the arbitrary placement of a mission-style parapet atop the rectangular facade of a fast-food restaurant. The speakers for this session will provide an overview of regionalism in Texas architecture and also explore historical and contemporary examples.  
Panelists: Stephen Fox, author of *Houston Architectural Guide* and coauthor of *Galveston Architecture Guide: "Overview of Regionalism in Texas Architecture"*  
Ellen Beasley, author of *The Alleys and Back Buildings of Galveston: "On the Corner and In the Alley in Galveston"*  
Ted Lake and David Flato, Lake/Flato Architects, San Antonio: "Regionalism in the Work of Lake/Flato"  
Dwayne Jones, Texas Historical Commission: "Regional Influences on Texas's Roadside Architecture and Commerce"
- Session 11. Keeping Pace. The New(est) Art Histories: What Are They, Why Are They, and What Do We Do About Them?**  
*Peraux, Lobby Level*  
Moderator: Peter P. Blank, Art & Architecture Librarian, Stanford University  
Sponsor: Academic Division  
Abstract: The revisionist criticism of Art History which developed amidst the critical ferment of the 1970s did more than break-up the privileged hegemony of male artists and the concept of culture as high art. It spawned a new breed of historians who developed alternative attitudes towards interdisciplinary studies,

explored previously marginalized topics of research, and created more inclusive notions of culture. The materials of popular culture may now take precedence over the creations of the artist when it comes to analyzing visual culture. The absence of unequivocal standards is not only an "a priori" of current critical text, it may actually carry over into existing modes of bibliographic and subject access. In light of these recent developments it is not unreasonable to suggest that contemporary trends in art writing have advanced far beyond the understandings, tools, services, and collections of the art librarian.

Panelists: Peter Blank, Librarian, Art & Architecture Library, Stanford University

Patricia Burnham, Lecturer, American Studies Program/Dept. of Art and Art History, University of Texas at Austin

Lyn Korenic, Head, Arts Library, University of California, Santa Barbara - "Inside the Discipline, Outside the Paradigm: Keeping Track of the New Art History"

Katharine Martinez, Member Services Officer for Art & Architecture, Research Libraries Group, Inc. - "Mona Lisa, Marilyn Monroe, and the Gibson Girl: The Emergence of Visual Culture Studies in the Art Library"

Victor Zamudio-Taylor, Lecturer, Department of Art and Art History, University of Texas, Austin

**Session 12. Four Directions: Viewing the Ethnic Decorative Arts of the Southwest: A Panel Discussion**

*Jefferson Manor, Lobby Level*

Moderator: Madelyn Cook, Coordinator, Arizona State Museum Library, University of Arizona

Co-Sponsors: Indigenous Art and Culture Round Table, Decorative Arts Round Table, & Public Library Division

Abstract: This panel discussion will explore issues which have led to the rise of the Southwest as a vital center for the development of diverse ethnic decorative arts.

Cultural identities within the Southwest are celebrated through the encouragement and preservation of these distinctive art forms. The four panelists will provide a variety of perspectives on topics related to the development and production of specific ethnic arts; among these are: Native American arts in the Southwest; African-American folk art in Texas; Spanish Colonial art in Texas; and German-Texan decorative arts.

Panelists: Paula Baxter, Curator, Art & Architecture Collection, New York Public Library - Research issues and methodologies in Southwestern Native American art

Theresa Gold, Docent, The Institute of Texan Cultures - German-Texan Decorative Arts

Julie Webb, Webb Gallery - Texas Folk Art

Bruce Webb, Webb Gallery - Hispanic Folk Art

**Session 13. Discovering Our Past and Tracing Our Histories: The Early Leaders and Founders of Art Libraries**

*Travis, Mezzanine*

Co-Moderators: Pat Barnett, Frick Art Reference Library, & Ray Anne Lockard, Head Librarian, Frick Fine Arts Library, University of Pittsburgh

Co-Sponsors: Academic Library Division & Museum Library Division

Abstract: Celebrating the twenty-fifth anniversary of ARLIS/NA causes us to take pride in our organization's accomplishments, but it also presents us with responsibilities and opportunities. One of these is to examine our history before documentation is lost, we retire, or we forget. ARLIS/NA began to examine aspects of our history in the paper on George Wittenborn at the 1996 conference in Miami Beach. Few people have, however, studied the founders of or early librarians in our art libraries. The speakers in this panel will address who some of these individuals were, what motivated them to develop art collections and libraries, how they evolved over time, and the historic, cultural, or personal factors which drove that evolution. The co-moderators hope that this session will encourage other ARLIS/NA members to plan similar sessions, preserve relevant documents in their own institutions, conduct oral histories, and publish the results of their research to educate ourselves and promote our profession.

Panelists: Pat Barnett, Chief Librarian, Frick Art Reference Library (New York) - "Living Memorial: Helen Clay Frick, Founder of the Frick Art Reference Library"

Ray Anne Lockard, Head Librarian, Frick Fine Arts Library, University of Pittsburgh - "Aunt Helen: Pittsburgh's Gentlewoman Avenger"

Ted Goodman, Avery Library, Columbia University - "Samuel Putnam Avery, Patron of the Arts"

Deirdre Stam, Syracuse University, Associate Professor - "In Pursuit of Belle da Costa Greene"

Bill Dane, Special Collections, Newark Public Library - "John Cotton Dana: An Appreciation of His Art Interests and Influence in Libraries and Museums"

**Tuesday, April 8**

**11:45 am-1:00 pm**

**Discussion Groups**

**Art NACO**

*Peraux, Lobby Level*

Moderator: Sherman Clarke, Head of Original Cataloging,  
New York University

**Museum Library Directors Discussion Group**

*Jefferson Manor, Lobby Level*

Moderator: Kathy Corcoran, Head Librarian, Joslyn Art Museum

The Museum Library Directors Discussion Group provides heads of art museum libraries with the opportunity to talk informally with their colleagues about areas of mutual interest and share their experiences, ideas, and advice. No matter what the size of our museums and libraries, we face issues that are familiar to all library directors, but in ways that are unique to museum libraries.

**12 noon-2:00 pm**

**Canadian Members Meeting**

*Georgian, Lobby Level*

Moderator: Jane Devine, Librarian, Fine Arts & Music Division,  
Vancouver Public Library

**1:00 pm-3:00 pm**

**Panel Sessions V**

**Session 14.**

**From Cowgirls to Roadside Architecture: Postcard Collections as an Information Source**

*Jefferson Manor, Lobby Level*

Moderator: Beth Dodd, Curator, Architectural Drawings Collection,  
The General Libraries, The University of Texas at Austin

Sponsor: Texas Chapter

Present an overview of postcards and postcard collections as a source of information.

Panelists & Topics: Gregory Smith, Historian, Texas Historical Commission. Using sample postcards, Mr. Smith will show how differentiation in subjects, mediums, and productions can provide dating and descriptive help for cataloging and acquisition.

Loriene Roy, Associate Professor, Graduate School of Library and Information Science, The University of Texas at Austin, will talk about the use of postcards in historic preservation. She will discuss architectural themes, types of postcards depicting architectural themes, research using postcards, and the limitations of postcards.

A dealer, TBA, will describe how he/she restock his/her postcard collection, how he/she determines a monetary value for the cards, and the challenges involved in managing a postcard collection. Also discussed will be how dealers catalog their collections and what types of cards their customers are looking for and why

**Tuesday, April 8**

Susan Toomy Frost, collector, will discuss her history of collecting postcards, with emphasis on her cowgirl postcard collection. She will show samples of the different types of cards available, and how her collection has been useful to others.

Bob Wade, painter, sculptor, lecturer, and author will, in conjunction with Ms. Frost, discuss his use of postcards, especially cowgirl postcards in his work.

**Session 15.**

**Every Trade a Business, Every Business Not a Trade: The Commerce and Uses of Trade Catalogs**

*Travis, Mezzanine*

Co-Moderators: Linda M. Kruger, Supervisor, Art and Architecture Cataloging, Columbia University (Retired)

Jean Hines, Librarian, New York School of Interior Design

Sponsor: Decorative Arts Round Table

Abstract: The artifacts of material culture are hardly better represented pictorially than in trade catalogs.

Once "librarian-despised", currently this metier is assiduously identified, sought, acquired, cataloged, and used by increasing numbers of scholars, curators, collectors, and other students of material culture, employing the latest technology and interdisciplinary methodologies.

Panelists: Bradley C. Brooks, Director, The McFaddin-Ward House, Beaumont, Texas

Linda M. Kruger, Supervisor, Art and Architecture Cataloging, Columbia University (Retired)

Iris Snyder, Senior Assistant Librarian, Special Collections, University of Delaware

Katharine Martinez, Member Services Officer for Art & Architecture, Research Libraries Group, Inc.

**Session 16.**

**Tiptoeing into the Closet: Que(e)rying, Building, and Accessing our Collections**

*Peraux, Lobby Level*

Moderator: Ray Anne Lockard, Head Librarian, Frick Fine Arts Library, University of Pittsburgh

Co-Sponsors: Gay and Lesbian Interests Round Table & Diversity Committee

Abstract: The rise of lesbian and gay studies as a scholarly discipline at some universities has led a few scholars to begin to examine art history and some artists' works from the lesbian/gay perspective. Yet, many art librarians are not informed of this

new field. Those of us who wish to collect materials on lesbian/gay artists and art history have difficulty doing so because relevant titles are not adequately publicized in mainstream sources, carried by standard vendors, or covered by traditional reviewing sources. This session is designed in response to the December 1995 dialogue on ARLIS-L on whether or not these materials should be published or made accessible at all.

Panelists: Lisa Reitzes, Department of Art History, Trinity University, San Antonio - "Reading Between the Lines: The Case of Eleanor Raymond, Architect"

Mimi Hernandez, Byrd Library, University of Arizona - "Looking for Andy Warhol: Collection Development Resources on Gay/Lesbian and Bisexual Artists"

Al Willis and Ray Reece, Arts Library, University of California at Los Angeles - "These Are a Few of Our Favorite Things: New Titles on Gay and Lesbian Art"

Sherman Clarke, Head of Original Cataloging, Elmer Bobst Library, New York University - "If Anonymous Was a Woman, Who's the Gay/Lesbian Artist?: Access to Bibliographic Information about Gay Art and Artists"

3:15 pm-4:45 pm

Ask ARLIS 6.

Ask ARLIS III

Building Successful ARLIS/NA Chapters

Travis, Mezzanine

Co-Moderators: Stephanie C. Sigala, The Saint Louis Art Museum Betsy Peck Learned, Roger Williams University

Co-Sponsors: Membership Committee & ARLIS/NA Regional Representatives

Abstract: Designed to bridge the gap between regional/local participation in ARLIS/NA and the Society's annual conference, this AskARLIS will highlight successful chapter activities and provide opportunities for the sharing of practical ideas for chapter management.

Contributors: Mary Graham, Arizona State Museum, "Managing a Regional Conference"

Alexandra de Luise, Queens College, "Building Chapter Membership"

Eumie Imm Stroukoff, Museum of Modern Art, "Chapter Fundraising"

Barbara Polowy, Art Librarian, Smith College, "Setting Up a Chapter Web Page"

Ask ARLIS 7.

Are We Equal Partners? Managing Publication Exchange Programs in the 90s

Peraux, Lobby Level

Moderator: Cecilia H. Chin, National Museum of American Art/National Portrait Gallery Library, Smithsonian Institution

Co-Sponsors: Museum Library Division & Academic Library Division

Abstract: This Ask ARLIS will examine the current state of publication exchange programs in art libraries. A detailed survey will be conducted during the winter of 1996-97 which will gather information to be considered in this session. Librarians from museums and universities will discuss various issues associated with the administration of exchange programs including funding, tracking methods, reciprocal policies, various levels of exchange, acknowledgment, etc. A museum publications representative will also participate in this discussion.

Contributors: Kenneth Soehner, Metropolitan Museum of Art Susan Craig, University of Kansas, Art & Architecture Library

Karen McKenzie, Art Gallery of Ontario

Katja Apih, Museum of Modern Art, Ljubljana

Nancy Stevens, Editor, Amon Carter Museum

4:00 pm-6:30 pm

Exhibits Open

Anacacho Ballroom, Lobby Level

4:00 pm-6:30 pm

Poster Display

Anacacho Ballroom Stage, Lobby Level (See poster titles under General Information)

4:45 pm-6:30 pm

Exhibits Closing Reception - sponsored by J. Benjamins Antiquariat

Anacacho Ballroom & Peraux, Lobby Level

6:15 pm-8:00 pm

Group Discussions

Visual Resources Software Users Discussion Group

Jefferson Manor, Lobby Level

Moderator: Trudy Jacoby, Trinity College

Topic: The VR Software Users Meeting has evolved from the VRMS and EmbARK User Group meetings. Issues may be discussed across multiple platforms and software packages. Databases in use include, but are not limited to, VRMS, EmbARK, Image AXS, Dataease, Filemaker, etc.



## Tuesday, April 8

### Tours III.

#### **Tour 8. Art Pace Gallery (Foundation for Contemporary Art)**

Private Collection of Linda Pace, founder of Art Pace,  
5:15 pm - 8:30 pm

Limit: 45

Price: \$35.00

Round trip transportation; ARLIS/NA volunteer to assist.

Description: Established by San Antonian, Linda Pace, this contemporary visual arts operating foundation seeks to nurture emerging and established artists, provide artists opportunities for experimentation and education, and to expand the public's interest in contemporary art. Art Pace offers residency opportunities for artists to create and present their work. During their residency artists receive living, working, and exhibition space in the 15,000 square foot gallery located in downtown San Antonio. Each residency is composed of one artist from San Antonio, one from elsewhere in the United States, and one from abroad. On this tour, ARLIS/NA tour participants will enjoy an in-depth tour of Art Pace Gallery and then proceed to Linda Pace's private residence to view her personal collection of contemporary art.

**8:00 pm-12:00 am Hospitality Suite (Pete's Pub and River Walk)**

## Wednesday, April 9

**8:00 am-12:00 pm Internet Room Open**  
*Johnson, Third Floor*

**8:30 am-5:00 pm Executive Board Post-Conference Meeting**  
*Coronado, Third Floor*  
Open to membership on a seating available basis.

**9:00 am-5:00 pm Workshop**  
Workshop will be held at the San Antonio Public Library (600 Soledad Street), which is within walking distance (6 blocks) of the Crowne Plaza St. Anthony Hotel. Box lunches will be provided for all workshop participants. Access to the library prior to 9:00 am is at the Southeast corner of the building (Gallery and Auditorium Entrance). If you plan to use the library parking garage, please be advised there is a charge and the garage observes the library's hours.

## Wednesday, April 9

### Workshop I.

#### **The Web and HTML**

*San Antonio Public Library - Fourth Floor Training Room*  
Enrollment Limit: 15 (a pc workstation will be available for each participant)

Price: \$85.00

[Note: Repeated from Saturday, April 5]

#### **Part I (1.5 Hours)**

This part of the workshop will focus on securing an institutional homepage from an administrative point of view. It will include planning and managing hardware and software, obtaining Internet accounts, staffing, budgets, analysis, maintenance, and growth. Participants will surf the Net and explore examples of effective and ineffective Websites.

#### **Part II (4.5 hours)**

This part of the workshop will focus on the basics of HTML (HyperText Markup Language) including information about getting on the Web and using HTML editors. There will be a hands-on demonstration of HTML coding such as page requirements, text manipulation, images, and hyperlinks. An overview of more advanced features will also be discussed and a bibliography of references for further exploration will be distributed.

Workshop Leaders: Annette Haines, Library Assistant III,  
Michigan State University

Carole Pawlowski, Visual Resources Librarian, Assistant  
Professor, Eastern Michigan University

Jennifer L.S. Moldwin, Head Librarian, The Detroit Institute of  
Arts Research Library

### Tours IV.

#### **Tour 9. Downtown Architecture Lectures and Walking Tours**

Slide lecture in Crowne Plaza St. Anthony Hotel, 9:30 am-10:00 am (*Lafitte, Third Floor*). Walking tour, 10:00 am-12:00 noon.

Limit: 15

Price: \$20.00

Includes professional guide.

[NOTE: Repeated from Friday, with different content and itinerary]

Defying exact definition or categorization, San Antonio architecture has been called charming and picturesque, while others have said that it has a "certain flavor." Our guide has individually designed these architectural lectures and walking tours so that tour participants could join both the Friday and Wednesday sessions, as each will be quite different.

On the Friday tour, members will leave the Crowne Plaza St. Anthony immediately after the slide lecture and walk in a northerly direction toward the Southwest Craft Center. The Wednesday tour participants will also leave the Crowne Plaza St. Anthony immediately following the slide lecture, but will walk in the opposite direction toward the Alamo and La Villita. Our guide has done extensive research on San Antonio architecture, and she will concentrate on a mix of major sites and works of prominent local architects, along with some off-the-beaten-path San Antonio gems. Be sure to wear comfortable shoes.

**Tour 10. San Antonio Spanish Colonial Missions,  
8:00 am-12:00 noon**

Limit: 45

Price: \$25.00

Includes: Round trip transportation; professional guide.

[NOTE: Repeated from Saturday, April 5]

Among San Antonio's treasures are its Spanish Colonial missions. Founded in the eighteenth century by the Franciscans, these colonial outposts live still as active parishes, and are reminders of Spain's attempts to extend its dominion northward from Mexico. Accompanied by a professional guide, ARLIS/NA tour participants will travel down The Mission Trail and visit Missions Concepcion, San Juan Capistrano, Espada, and San Jose, sometimes viewed as the model among the Texas missions. Near Mission Espada, members will visit the Espada Aqueduct, one of the oldest arched Spanish aqueducts in the United States. Before touring Mission San Jose, tour participants will visit the National Park Service visitor center and view an excellent film on the history of South Texas Indians.

**Tour 11. The Harmon and Harriet Kelley Collection of  
African American Art,  
1:00 pm-4:00 pm**

Limit: 40

Price: \$25.00

Includes: Round trip transportation; ARLIS/NA volunteer to assist.

Dr. and Mrs. Harmon Kelley will graciously open their home to tour participants of ARLIS/NA to view their private collection of African American art. The Kelleys will be your guides.

In 1994, the San Antonio Museum of Art organized a groundbreaking exhibition of 120 paintings, drawings, and watercolors from the Harmon and Harriet Kelley Collection. This traveling exhibition included works never shown before, and the exhibition catalog *The Harmon and Harriet Kelley Collection of African American Art*, published by the museum, added to the literature on art. Among the artists included in the exhibition were Edward M. Bannister, Elizabeth Catlett, Romare Bearden, and Jacob Lawrence. The Kelley Collection has been featured in the March 1996 issue of *Art and Antiques*, and *Texas Monthly* recently included Harmon and Harriet Kelley in their list of the 20 "most impressive, intriguing and influential Texans of 1996."

**Tour 12. Discover Austin's Treasured Resources!  
8:00 am-11:00 pm**

Limit: 44

Price: \$95.00

Includes: Round trip transportation; refreshments on the bus; box lunch; catered buffet dinner.

Begin your Austin tour at the renowned Harry Ransom Humanities Research Center (HRC) located on the campus of the University of Texas. Guided by librarians, conservators, and curators, you will tour the HRC paper, photography, and book conservation labs plus the art and photography collections. After a relaxed lunch at the Flawn Academic Center, you will tour behind-the-scenes in the nearby General Libraries Architecture & Planning Library, and the Architectural Drawings Collection.

You will then travel by bus to the opposite side of the university campus to visit the Center for American History, the Benson Latin American Collection, the General Libraries Fine Arts Library, and the Department of Art & Art History Visual Resources Collection.

## Wednesday, April 9

Your next stop on this full-day tour will be an open house at Booklab, Inc., a preservation photocopy service and collection maintenance repair provider; as well as a leading supplier of archival enclosures of all kinds for fine press publishers, library storage projects, and special collections.

Your final stop will be the culturally significant Charles Moore House and Studio, preserved by The Charles Moore Foundation. Charles W. Moore and his architectural partner Arthur Andersson transformed an existing dwelling into a place of spirited habitation in which Moore lived and worked, surrounded by his library and extraordinary toy collection. You will enjoy a catered buffet dinner at the Charles Moore House before returning to San Antonio.

DAY IN VIEW-FRIDAY, APRIL 4, 1997				
7 a.m.				
8 a.m.	Executive Board Pre-Conference Meeting			
9 a.m.				
10 a.m.				
11 a.m.				
Noon				
1 p.m.		Registration Desk Open	Internet Room Open	
2 p.m.				RLG Art & Architecture Group Meeting
3 p.m.			Tour I	
4 p.m.				
5 p.m.				
6 p.m.				Committee Business Meetings I
7 p.m.			SCIPIO Users Meeting	
8 p.m.				Architectural Slide Lecture
9 p.m.				Hospitality Suite
10 p.m.				
11 p.m.				
12 a.m.				

## DAY IN VIEW-SATURDAY, APRIL 5, 1997

7 a.m.							
8 a.m.	Registration Desk Open	Internet Room Open					
9 a.m.			Tours II, Tour 2				
10 a.m.			Tours II, Tour 3				
11 a.m.			Tours II, Tour 4				
Noon			Tours II, Tour 5				
1 p.m.			Tours II, Tour 6				
2 p.m.			Tours II, Tour 7				
3 p.m.							
4 p.m.							
5 p.m.							
6 p.m.					Transportation by bus to Convocation		
7 p.m.					Convocation at Beethoven Hall		
8 p.m.			Reception at San Antonio Public Library				
9 p.m.							
10 p.m.							
11 p.m.			Hospitality Suite	Serials Swap I			
12 a.m.							

## DAY IN VIEW-SUNDAY, APRIL 6, 1997

7 a.m.	Yoga Under the Big Sky				
8 a.m.		Registration Desk Open	Internet Room Open	Business Meetings	
9 a.m.				Divisions	
10 a.m.				Sections	
11 a.m.				Exhibits Set-Up	
Noon					
1 p.m.					
2 p.m.				Ask ARLIS I. Ask ARLIS 1 Ask ARLIS 2 Ask ARLIS 3	Cataloging Problems Discussion Group
3 p.m.					
4 p.m.				Panel Sessions II	
5 p.m.				Session 4 Session 5 Session 6	
6 p.m.				Exhibits Opening Party	Poster Display
7 p.m.					
8 p.m.			Transportation to Southwest Craft Center		
9 p.m.			Ars Libri Reception and ARLIS/NA 25th Anniversary Celebration		
10 p.m.			Transportation to Crowne Plaza St. Anthony		
11 p.m.				Hospitality Suite	
12 a.m.					

## DAY IN VIEW-MONDAY, APRIL 7, 1997

7 a.m.	Yoga Under the Big Sky	Continental Breakfast
8 a.m.	Serials Swap II	Chapter Officers' Breakfast
9 a.m.		Registration Desk Open
10 a.m.		Internet Room Open
11 a.m.		Exhibits Open
Noon		Poster Display
1 p.m.		
2 p.m.		
3 p.m.		
4 p.m.		
5 p.m.		Exhibits Open
6 p.m.		Poster Display
7 p.m.		Ask ARLIS II. Ask ARLIS 4 Ask ARLIS 5
8 p.m.		
9 p.m.		
10 p.m.		
11 p.m.		
12 a.m.		

## DAY IN VIEW-TUESDAY, APRIL 8, 1997

7 a.m.	Yoga Under the Big Sky	
8 a.m.		Leadership Breakfast
9 a.m.		Exhibits Open
10 a.m.		Poster Display
11 a.m.		Panel Sessions IV Session 10 Session 11 Session 12 Session 13
Noon		Discussion Groups
1 p.m.		Canadian Members Meeting
2 p.m.		Panel Sessions V Session 14 Session 15 Session 16
3 p.m.		Ask ARLIS III. Ask ARLIS 6 Ask ARLIS 7
4 p.m.		Exhibits Open
5 p.m.		Poster Display
6 p.m.		Exhibits Closing Reception
7 p.m.		VR Software Discussion Group
8 p.m.		Hospitality Suite
9 p.m.		
10 p.m.		
11 p.m.		
12 a.m.		

## DAY IN VIEW-WEDNESDAY, APRIL 9, 1997

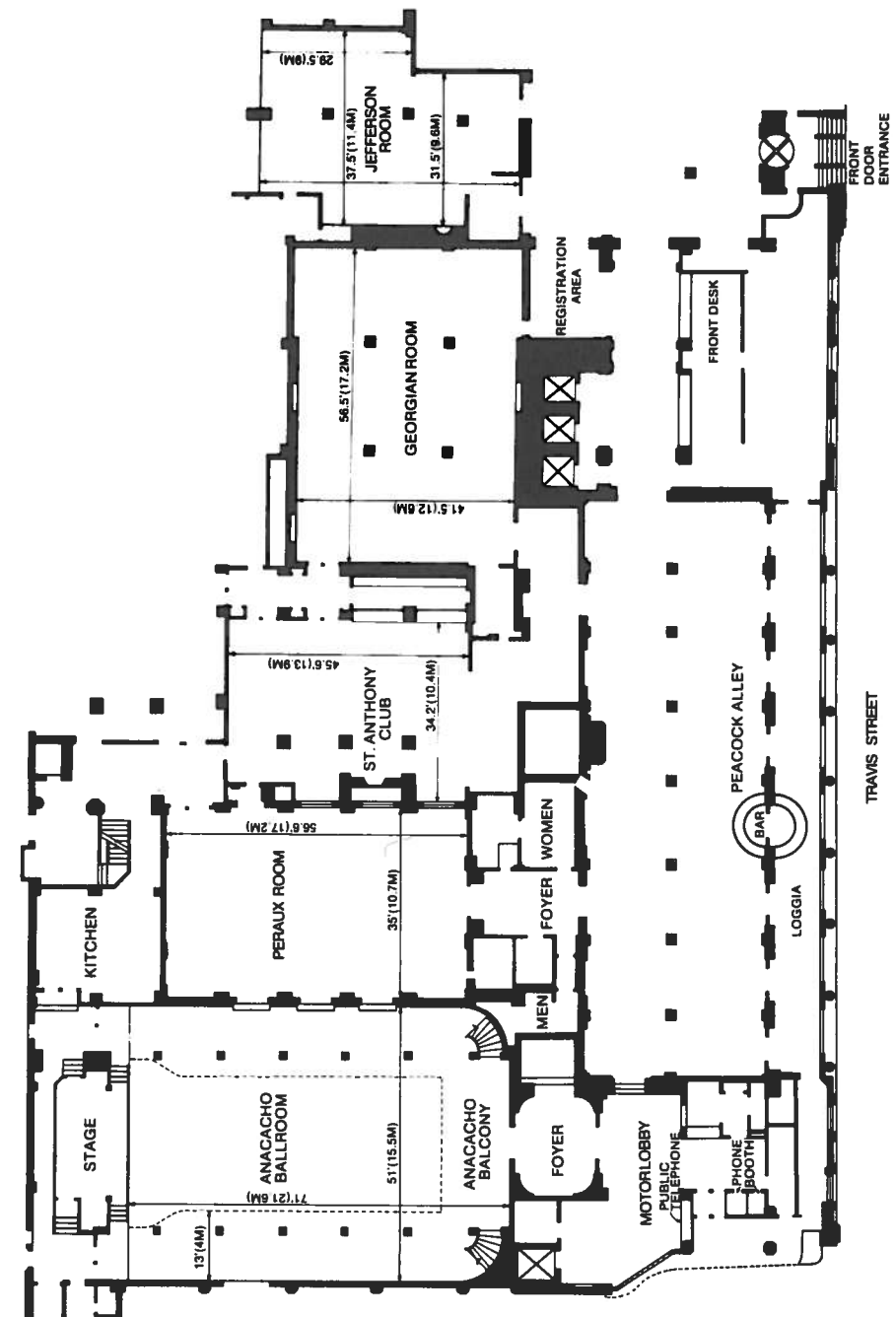
7 a.m.							
8 a.m.	Internet Room Open	Executive Board Post-Conference Meeting	Workshop I. The Web and HTML Part I & Part II	Walking Tours	Tours IV. Tour 9		
9 a.m.						Tours IV. Tour 10	Tours IV. Tour 12
10 a.m.							
11 a.m.							
Noon							
1 p.m.	Tours IV. Tour 11						
2 p.m.							
3 p.m.							
4 p.m.							
5 p.m.							
6 p.m.							
7 p.m.							
8 p.m.							
9 p.m.							
10 p.m.							
11 p.m.							
12 a.m.							

## ACRONYMS AND TERMS

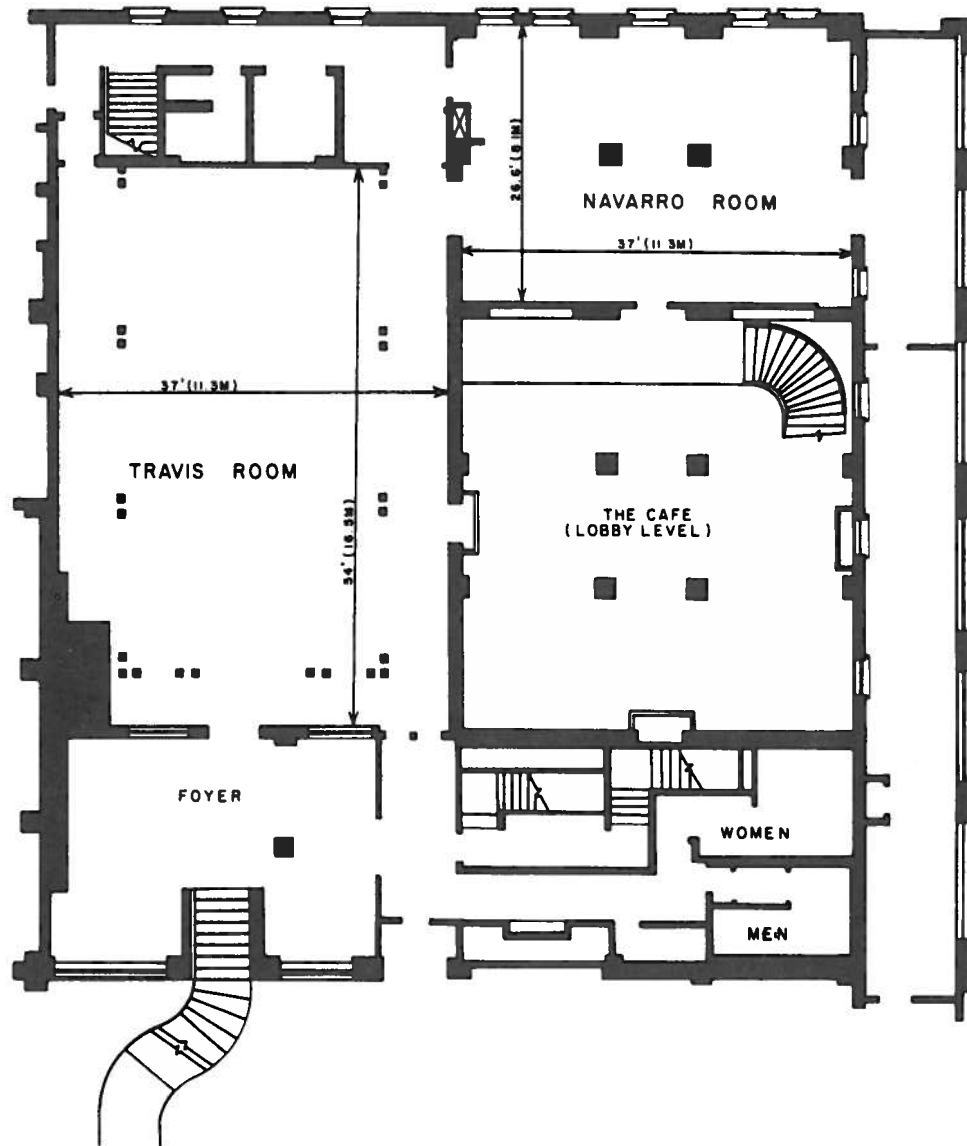
AACR2	Anglo-American Cataloging Rules, Second Edition
AAG	Art and Architecture Group
AAM	American Association of Museums
AAT	Art and Architecture Thesaurus
ACRL	Association of College and Research Libraries
ADAG	Architecture Drawings Advisory Group
AHIP	Art History Information Program (Getty)
AIA	American Institute of Architects
AITF	Art Information Task Force
ALA	American Library Association
ARLIS-L	ARLIS/NA Electronic Discussion List
ASIS	American Society for Information Science
AVIADOR	Avery Videodisk Index of Architectural Drawings (RLIN)
CAA	College Art Association
CD-ROM	Compact Disk Read-Only Memory
CD-I	Interactive Compact Disk
CIC	Committee on Institutional Cooperation
CHIN	Canadian Heritage Information Network
CIHA	International Committee of the History of Art
CIMI	Computer Exchange of Museum Information
CLA	Canadian Library Association
CRL	Council on Library Resources
DART	Decorative Arts Round Table (ARLIS/NA)
DBMS	DataBase Management System
DCTV	Digital Color Television
DIALOG	An online reference system
DVI	Digital Video Interfaces
EmbARK	Digital Collections' Collection Management Application Software
EPIC	OCLC's online reference system
ERIC	Educational Resources Information Center
GLIRT	Gay and Lesbian Interests Round Table (ARLIS/NA)
HDTV	High Definition Television
HTML	HyperText Mark-up Language
HTTP	HyperText Transport Protocol
ICONCLASS	An iconographic classification system

IFLA	International Federation of Library Associations and Institutions
ILL	Inter-Library Loan
INNOPAC	An online integrated library system
LCSH	Library of Congress Subject Headings
MARBI	Machine Readable Form of Bibliographic Information (ALA)
MARC	Machine Readable Cataloging Record
NAAB	National Architecture Accreditation Board
NAALRC	North American Art Library Resources Committee
NACO	National Coordinated Cataloging Operations
NART	New Art Round Table (ARLIS/NA)
NEH	National Endowment for the Humanities
NFB	National Film Board of Canada
NISO	National Information Standards Organization
NOTIS	An online integrated library system
NTSC	National Television Standard Code
OCLC	Online Catalog Library Center, Inc.
OCUC	OCLC Online Union Catalog
OPAC	Online Public Access Catalog
PLA	Public Library Association
PRISM	An access service to OCLC
RAMA	Remote Access to Museum Archives
RISS	Reference and Information Services Section (ARLIS/NA)
RLG	Research Libraries Group
RLIN	Research Libraries Information Network
SCIPRO	Sales Cataloging Index Project Input On-Line (RLIN)
SGML	Standard Generalized Mark-up Language (ISO)
SLA	Special Libraries Association
TAU	Thesaurus Artis Universalis
URL	Universal Resource Locators
VRA	Visual Resources Association
VRD	Visual Resources Division (ARLIS/NA)
VRMS	Visual Resources Management System
WAART	Women and Art Round Table (ARLIS/NA)
WAIS	Wide Area Information System
WWW	World Wide Web

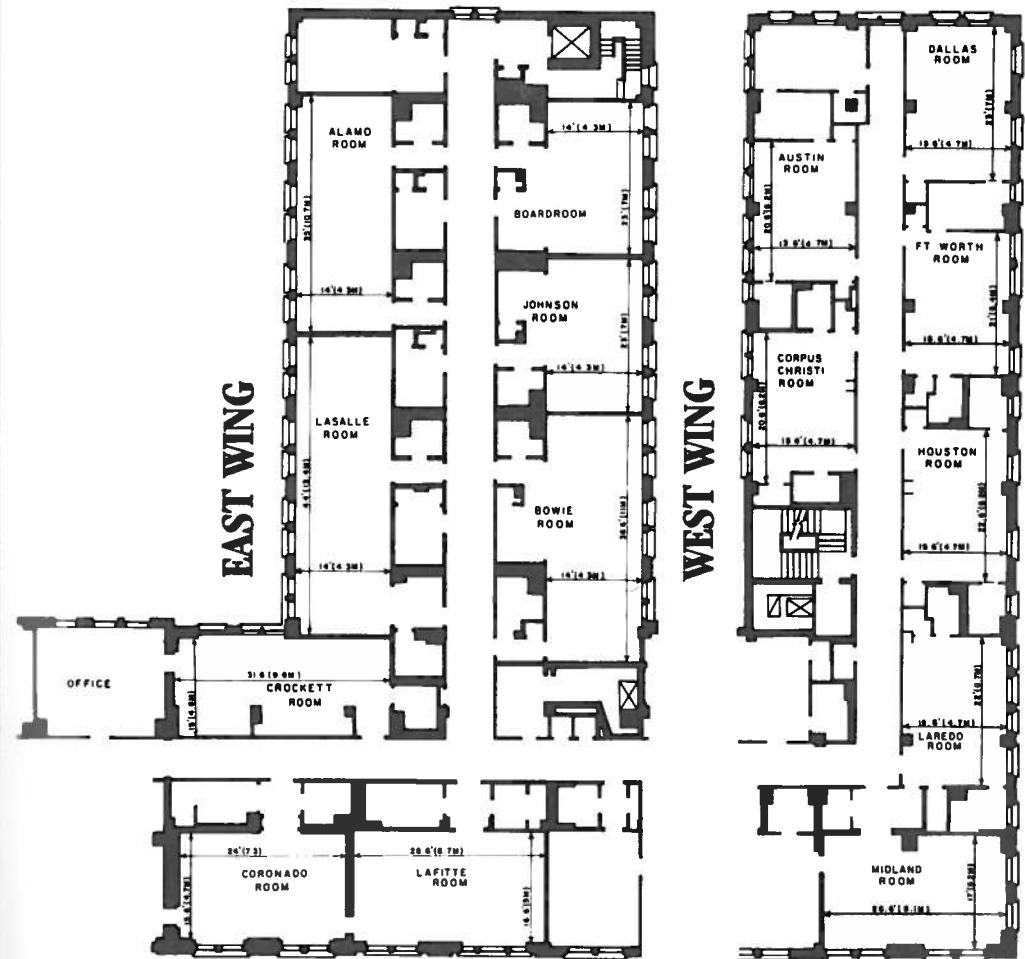
## CROWNE PLAZA ST. ANTHONY HOTEL LOBBY LEVEL



# CROWNE PLAZA ST. ANTHONY HOTEL MEZZANINE



# CROWNE PLAZA ST. ANTHONY HOTEL THIRD FLOOR





## LOCAL INFORMATION

[Note: This information is current as of Feb. 7, 1997]

### Restaurants

Restaurants of all varieties, ranging from regional and ethnic to fast-food, abound in the downtown area, especially along the River Walk. Many are within walking distance of the Crowne Plaza St. Anthony Hotel. Information on dining in San Antonio will be available through the Crowne Plaza St. Anthony Hotel and at the conference registration desk. In addition, most of the River Walk restaurants have menus posted outside their establishments. Below is a sampling of the variety of dining opportunities available. Restaurants farther than a 10-minute walk from the Crowne Plaza St. Anthony Hotel, but still within the downtown or near downtown area, are indicated by an asterisk (\*). There are many fast-food restaurants serving breakfast, lunch, and dinner on Alamo Plaza between Houston and Commerce Streets.

Price Ranges [per person, excluding alcoholic beverages, sales tax, and tip]

\$ = under \$10.00  
 \$\$ = \$10.00-\$20.00  
 \$\$\$ = \$20.00-\$30.00

#### \*Aldaco's Mexican Cuisine \$

1141 E. Commerce Street. 222-0561

10:30 am-8:00 pm, Monday; 10:30 am-9:00 pm, Tuesday; 10:30 am-10:00 pm, Wednesday-Saturday; closed Sunday. Good, reasonably priced Mexican food. Located in historic St. Paul Square east of downtown.

#### \*Babylon Grill \$\$/\$\$\$

910 S. Alamo. 229-9335

11:00 am-11:00 pm, Monday-Thursday; 11:00 am-midnight, Friday and Saturday; 11:00 am-10:00 pm, Sunday. Located in Southtown and adjacent to the historic King William District, Babylon Grill features fine Mediterranean cuisine.

#### Boudro's \$\$/\$\$\$

421 E. Commerce. 224-8484

11:00 am-11:00 pm, Sunday-Thursday; 11:00 am-midnight, Friday and Saturday. Located on the River Walk. Offers seafood, steaks, and Southwestern cuisine.

#### County Line Barbecue \$/\$\$

111 West Crockett. 229-1941

11:00 am-11:00 pm, daily. A good choice on the River Walk for fans of barbecue.

#### \*La Margarita lunch-\$; dinner-\$/\$\$

120 Produce Row. 227-7140

11:00 am-10:00 pm, Sunday-Thursday; 11:00 am-midnight, Friday and Saturday. Located in Market Square. Good Mexican food and margaritas.

#### \*Mi Tierra Cafe and Bakery \$/\$\$

218 Produce Row. 225-1262

Located in Market Square, Mi Tierra is open 24 hours a day, 7 days a week. Good on-site bakery selling Mexican pastries and candy. Live Mariachi music.

#### Paesano's River Walk lunch-\$/\$\$; dinner \$\$/\$\$\$

111 W. Crockett. 227-2782

11:00 am-11:00 pm, Sunday-Thursday; 11:00 am-midnight, Friday and Saturday. Paesano's, a favorite among San Antonians for Italian dining, has recently opened this River Walk location.

#### \*Rosario's \$/\$\$

1014 S. Alamo. 223-1806

10:45 am-3:00 pm, Monday; 10:45 am-10:30 pm, Tuesday-Thursday; 10:45 am-12:30 am, Friday; 10:45 am-11:00 pm, Saturday; closed Sunday. A popular spot for Mexican food in the King William area.

#### Schilo's Delicatessen \$

424 E. Commerce. 223-6692

7:00 am-8:30 pm, Monday-Saturday, closed Sunday. German and American deli favorites. Economical breakfasts and lunch and dinner with a lunch special during the week.

#### \*Star Anise lunch-\$; dinner-\$\$/\$\$\$

Exchange Building at Pecan and St. Mary's 271-0543

Lunch 11:30 am-2:30 pm, Monday-Friday; dinner 5:30 pm-11:00 pm, closed Sunday.

A touch of Vancouver, British Columbia in San Antonio. Affiliated with Star Anise in Vancouver (rated one of the top restaurants in North America-*Gourmet Magazine*, October 1996), the San Antonio location features progressive Pacific rim and Pacific Northwest cuisine. Reservations highly recommended.

#### Starbucks Coffee \$

111 Crockett #105. 299-4445

6:30 am-11:30 pm, Monday-Thursday; 6:30 am-1:30 am, Friday and Saturday; 7:00 am-11:30 pm, Sunday. For those wanting a light breakfast away from the hotel, Starbucks offers beverages, pastries, bagels, etc.

#### \*Tower of the Americas Restaurant lunch-\$/\$\$; dinner \$\$/\$\$\$

222 HemisFair Park. 223-3101

Lunch: 11:00 am-2:00 pm, Monday-Friday; 11:00 am-2:30 pm, Saturday and Sunday. Dinner: 5:00 pm-10:00 pm, Sunday-Thursday; 5:00 pm-10:30 pm, Friday and Saturday. Revolving restaurant affords 360 degree view of city at 579 feet. Serves steaks, seafood and Southwestern cuisine.

#### Zuni Grill breakfast/lunch-\$; dinner-\$\$

511 River Walk. 227-0864

8:00 am-10:00 pm, Sunday-Thursday; 8:00 am-11:00 pm, Friday and Saturday. Located on the River Walk and features Southwestern cuisine. Breakfast served until 11:00 am, lunch served until 5:00 pm.

## Bars and Pubs

Following is a brief listing of bars and pubs along the River Walk. For a more complete listing please refer to the flyer in your registration packet.

### **Acapulco Sam's Night Club**

212 College. 212-7267

11:00 am-2:00 am, daily. Restaurant and bar. Live music.

### **Dick's Last Resort**

406 Navarro Street. 224-0026

11:00 am-2:00 am, daily. Restaurant and bar. Live music nightly.

### **Durty Nelly's Irish Pub**

200 S. Alamo [Hilton Hotel]. 222-1400

11:30 am-2:00 am, Monday-Saturday; noon-2:00 am, Sunday. Old-time sing-alongs in an Irish pub setting.

### **The Landing**

123 Losoya [Hyatt Hotel]. 223-7266

3:00 pm-2:00 am, Monday-Thursday; noon-2:00 am, Friday and Saturday; noon-12:30 am, Sunday. Features the Jim Cullum Jazz Band.

### **Mad Dog's British Pub**

123 Losoya [Hyatt Hotel]. 222-0220

10:00 am-2:00 am, daily. Restaurant and bar. DJ and dancing nightly.

## Gay & Lesbian Bars and Clubs

Following is a listing of downtown gay and lesbian bars and clubs. For information on bars and clubs located elsewhere in the city, as well as general information relating to the gay and lesbian community in San Antonio, see *The San Antonio Marquise* (published monthly and available free at most clubs).

### **Bonham Exchange**

411 Bonham. 271-3811

4:00 pm-2:00 am, Monday-Wednesday;  
4:00 pm-4:00 am, Friday; 8:00 pm -

4:00 am, Saturday; 8:00 pm-2:00 am,  
Sunday.

### **El Jardin**

106 Navarro (at Nueva). 223-7177

10:00 am-2:00 am, Monday-Saturday, 12  
noon-2:00 am, Sunday.

### **The New Crew**

309 W. Market (at Navarro and Presa).  
222-9553

11:00 am-2:00 am, daily

### **Red, Hot & Blues**

450 Soledad (at Convent). 227-0484.

3:00 pm-2:00 am, Monday-Friday; 8:00  
pm-2:00 am, Saturday; closed Sunday

Gay-friendly jazz and blues club.

## Downtown Libraries

### **Daughters of the Republic of Texas Library**

300 Alamo Plaza. 225-1071

9:00 am-5:00 pm, Monday-Saturday,  
closed Sunday

### **The Institute of Texan Cultures Library**

801 S. Bowie (HemisFair Park). 458-2300

Noon-5:00 pm, Monday-Friday by  
appointment

### **McNay Art Museum Library**

6000 N. New Braunfels Avenue. 824-  
5368

10:00 am-4:45 pm, Tuesday-Friday

### **San Antonio Conservation Foundation Library**

107 King William Street. 224-6163

8:30 am-4:30 pm, Monday-Friday

### **San Antonio Public Library [Central Library]**

600 Soledad Street. 207-2500

9:00 am-9:00 pm, Monday-Thursday; 9:00  
am-5:00 pm, Friday and Saturday; 11:00  
am-5:00 pm, Sunday

## Downtown Galleries

### **ArtPace Foundation for Contemporary Art**

445 N. Main (at Savings). 212-4900

Noon-5:00 pm, Wednesday-Sunday or by  
appointment. Private foundation sponsoring  
residencies and exhibits by local, regional,  
and national artists.

### **Blue Star Art Space**

116 Blue Star. 824-5368

Noon-6:00 pm, Wednesday-Sunday.  
Features cutting-edge exhibits and installa-  
tions by local, regional, and national  
artists.

### **National Autonomous University of Mexico in San Antonio**

[Universidad Nacional Autonoma de  
Mexico]

HemisFair Park. 222-8626. Contemporary  
exhibits by local and Mexican artists.

### **Parchman Stremmel Galleries**

203 N. Presa. 222-2465

10:00 am-5:30 pm, Monday-Friday;  
10:00 am-4:00 pm, Saturday and by  
appointment. Modern and contemporary  
paintings and sculpture by local, regional,  
and national artists.

### **The Southwest Craft Center**

300 Augusta. 224-1848

10:00 am-5:00 pm, Monday-Saturday.  
Exhibits by local, regional, and national  
artists as well as student and faculty shows.

### **Tienda Guadalupe Folk Art and Gifts**

1001 S. Alamo. 226-5873

Noon-6:00 pm daily, except Wednesdays  
and rainy days. A delightful Mexican folk  
art shop in Southtown.

## Telephone Directory

[All area codes are local (210) unless otherwise noted.]

### Emergency Information

Emergency  
[police, fire, ambulance, sheriff] 911

### Non-Emergency

Police 207-7273

Fire, ambulance 207-7744

Poison Center 1-800-764-7661

Teletype for the deaf [police, fire, EMS]  
224-1411

### Counseling/Hotlines

AIDS Hotline 1-800-590-2437

Alcoholics Anonymous 828-6235

Legal Aid Society of Bexar County 227-0111

Narcotics Abuse 24 Hour Helpline &  
Treatment 1-800-234-0420

Narcotics Anonymous 434-0665

Rape Crisis Center 521-7273

24 Hour Hotline 349-7273

### Suicide Prevention

Help Line of the United Way 227-4357

### Visitor Information

American Institute of Architects [San  
Antonio Chapter] 226-4979

San Antonio Convention & Visitors Bureau  
Visitor Information Center 225-4636

317 Alamo Plaza (across from the Alamo)  
Brochures and maps available, staff to  
provide tourist information.

**San Antonio Dept. of Arts & Cultural Affairs**  
222-2787

**Time and Temperature**  
226-3232

## Transportation

**Amtrak**  
[general information & reservations]  
223-3226; 1-800-872-7245

**Greyhound Bus Lines**  
1-800-231-2222; en Español 1-800-531-  
5332

**VIA Metropolitan Transit**  
[SA City bus system route & schedule  
information] 227-2020

**Airlines**  
**American Airlines**-passenger reserva-  
tions & information 1-800-433-7300;  
en Español 1-800-633-3711. Automated  
arrival/departure, fare/schedule, and gate  
information 1-800-223-5436; en Español  
1-800-228-8356

**Continental**-reservations-US, Mexico  
828-8381. Reservations-other international  
destinations 1-800-231-0856. Automated  
flight arrival/departure information 1-800-  
784-4444; en Español 1-800-537-9222

**Delta**-domestic 1-800-221-1212; interna-  
tional 1-800-241-4141

**Mexicana** 1-800-531-7921

**Northwest**-domestic 1-800-225-2525;  
international 1-800-447-4747.  
Flight arrival/departure information 1-800-  
441-1818

**Southwest Airlines** 671-1221

**TWA**-passenger reservations & informa-  
tion 226-0626; 1-800-221-2000. Automated  
arrival/departure information 1-800-893-  
5436

**US Air**-passenger reservations & informa-  
tion 1-800-428-4322; en Español 1-800-  
842-5374. Automated customer service 1-  
800-943-5436

**United Airlines**-reservations & informa-  
tion 1-800-241-6522; en Español 1-800-  
426-5561

## Mail Services/Money Transfers/ Foreign Currency Exchange

**Airport Foreign Currency Exchange**  
Terminal 1 824-7329  
Terminal 2 822-7278

**Alamo Foreign Exchange**  
[downtown] 227-3900

**Federal Express**  
1-800-463-3339

**UPS/United Parcel Service**  
1-800-742-5877

## US Postal Service

Postal answer line [24 hours] 650-1630

Zip Code Information 657-8302

Express Mail Pickup 822-8777

Express Mail Tracking/Pickup/Info [24  
hours] 1-800-222-1811

Downtown Station 227-3399

Western Union 1-800-325-6000; en  
Español 1-800-325-4045

## Sports/Entertainment

Majestic Broadway Series 226-3333

San Antonio Dragons [hockey] 737-7825

San Antonio Iguanas [hockey] 227-4449

San Antonio Missions [baseball] 675-7275

San Antonio Spurs [basketball] 554-7787

San Antonio Symphony 554-1010

San Antonio Zoo 734-7183

### Theme Parks

Sea World of Texas 523-3611

Six Flags Fiesta Texas 697-5050

Ticket Services

Ticket City 227-8499

Ticketmaster 224-9600

## Bookstores-Downtown

### Booksmiths/Red Balloon

(209 Alamo Plaza; 271-9177, 271-9461). Hours: Monday-Saturday 10:00 a.m.-7:00 p.m. and Sunday Noon-6:00 p.m.

### Brentano's

(River Center Mall, 849 E. Commerce; 223-3938). Hours: Monday-Saturday 10:00 a.m.-9:00 p.m. and Sunday Noon-6:00 p.m.

## Bookstores North of Downtown

### Half-Price Books

(3207 Broadway; 822-4597). Hours: Monday-Saturday 9:30 a.m.-9:00 p.m. and Sunday 9:30 a.m.-8:00 p.m.

### Cheever Books

(140 Carnahan Street; 824-2665). Hours: Monday-Saturday 10:00 a.m.-8:00 p.m. and Sunday Noon-8:00 p.m.

### Antiquarian Book Mart

(3127 Broadway; 828-4885). Hours: Monday-Saturday 10:00 a.m.-5:30 p.m. and closed on Sunday.

## Churches

### First Baptist Church

(515 McCullough; 226-0363). Service at 11:00 a.m.

### San Fernando Cathedral (Catholic)

(115 Main Plaza; 227-1297). Call for Mass schedule.

### St. Joseph Catholic Church

(623 E. Commerce; 227-0126). Services at 8:00 a.m., 9:30 a.m. (Spanish), 11:00 a.m., 12:30 p.m.

### St. Mary's Catholic Church

(202 N. St. Mary's; 226-8381). Services at 8:00 a.m., 9:30 a.m., 11:00 a.m., 12:15 p.m.

### Central Christian Church

(720 N. Main Avenue; 227-5273). Service at 10:55 a.m.

### First Church of Christian Scientist

(501 N. Alamo; 227-5029). Call for hours.

### St. Mark's Episcopal Church

(315 E. Pecan; 226-2426). Services at 7:45 a.m., 9:00 a.m., 11:00 a.m.

### Grace Lutheran Church

(504 Avenue E; 226-9131). Service at 10:00 a.m.

### St. John's Lutheran Church

(502 E. Nueva; 223-2611). Services at 8:00 a.m., 10:45 a.m.

### First Presbyterian Church

(404 N. Alamo; 226-0215). Services at 8:30 a.m., 9:30 a.m., 10:50 a.m., 6:00 p.m.

### Madison Square Presbyterian Church

(319 Camden; 226-6254). Service at 10:50 a.m.

### Travis Park United Methodist Church

(230 E. Travis; 226-8341). Services at 8:55 a.m., 11:00 a.m.

## Shopping

### Dillard's

(River Center Mall, 849 E. Commerce; 227-4343). Hours: Monday-Saturday 10:00 a.m.-9:00 p.m. and Sunday Noon-6:00 p.m.

### Foleys

(River Center Mall, 849 E. Commerce). Hours: Monday-Saturday 10:00 a.m.-9:00 p.m. and Sunday Noon-6:00 p.m. These hours tend to change so you may wish to call first.

### Kmart

(315 S. Santa Rosa; 226-9787). Hours: 8:00 a.m.-10:00 p.m.

## Drug Stores

### Eckerd's

(211 Losoya; 226-7328). Hours: Monday-Thursday 8:30 a.m.-10:00 p.m.; Friday & Saturday 8:00 a.m.-Midnight and Sunday 10:00 a.m.-8:00 p.m.

### Milam Drug Store

(Milam Building, 115 E. Travis; 226-0093). Hours: Monday-Friday 7:00 a.m.-4:00 p.m. and closed on weekends.

### Pill Box

(414 Navarro; 222-2552). Hours: Monday-Friday 8:30 a.m.-5:30 p.m. and Saturday 9:00 a.m.-Noon.

### River Center Drugs

(River Center Mall, 849 E. Commerce; 299-1383). Hours: Monday-Thursday 8:00 a.m.-10:00 p.m.; Friday & Saturday 8:00 a.m.-Midnight and Sunday 8:00 a.m.-10:00 p.m.

### Walgreens

(300 East Houston; 225-2619). Monday-Saturday 6:30 a.m.-7:30 p.m. and Sunday 9:00 a.m.-6:00 p.m.

## Variety Store

### Woolworths

(518 E. Houston; 227-3932). Hours: Monday-Saturday 8:30 a.m.-9:00 p.m. and Sunday 11:00 a.m.-6:00 p.m.

## Liquor Stores

### Payless Discount Liquor

(502 E. Houston; 225-3346). Hours: Monday-Saturday 10:00 a.m.-5:00 p.m. Closed Sunday.

### Western Beverages

(402 E. Commerce; 225-6424). Hours: Monday-Saturday 10:00 a.m.-8:55 p.m. Closed Sunday.

## Film/Photo Finishing

### **Eckerd Express Photo**

(211 Loyosa Street; 224-4132). Hours:  
Monday-Saturday 10:00 a.m.-6:45 p.m.  
and Sunday 11:00 a.m.-5:45 p.m.

### **Fox Photo**

(River Center Mall, 849 E. Commerce;  
271-3444). Hours: Monday-Saturday  
10:00 a.m.-9:00 p.m. and Sunday Noon-  
6:00 p.m.

## Copying

### **A&E Copying & Imaging**

(1111 Navarro; 226-2222). Hours:  
Monday-Friday 8:00 a.m.-5:00 p.m.

### **Majestic Print & Copy**

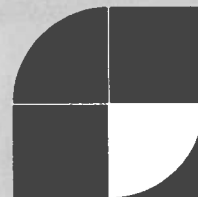
(260 E. Houston; 229-1480). Hours:  
Monday-Friday 8:30 a.m.-5:30 p.m.

### **Quik Print**

(149 E. Travis; 227-7561). Hours: Mon-  
day-Friday 8:00 a.m.-5:30 p.m. and  
Saturday 9:00 a.m.-1:00 p.m.

### **Speedy Print**

(116 E. Houston; 222-0341). Hours:  
Monday-Friday 8:30 a.m.-5:30 p.m.



*ars libri, ltd.*

#### **Currently available:**

**Catalogue 107:**  
**Art, Architecture, Archaeology:**  
**Periodicals and Sets**

**Catalogue 106:**  
**Early Art Literature**

**Catalogue 105:**  
**Architecture**

**Bulletin 102:**  
**The Other Nineteenth Century**

**Bulletin 101:**  
**Monographs on Twentieth-Century Artists**

**Bulletin 100:**  
**The Library of John Coolidge**

560 Harrison Avenue  
Boston, MA 02118-2436  
Tel: 617.357.5212  
Fax: 617.338.5763  
E-mail: arslibri@xensei.com

## ABBEVILLE PRESS ~ SPRING 1997



**CLAUDIO BRAVO**  
**PAINTINGS AND DRAWINGS**  
*Introductory essays by Paul Bowles and Mario Vargas Llosa*  
 181 color and 55 black-and-white illustrations, 276 pages, 0-7892-0207-7, \$95.00



**FRA ANGELICO**  
*Text by John T. Spike*  
 140 color and 130 black-and-white illustrations, 280 pages, 0-7892-0322-7, \$95.00



**HOLY TERRORS**  
**GARGOYLES ON MEDIEVAL BUILDINGS**  
*Text by Janetta Rebold Benton*  
 104 color illustrations, 140 pages, 0-7892-0182-8, \$29.95



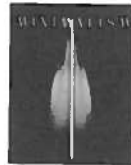
**DAVID AND PETER TURNLEY: IN TIMES OF WAR AND PEACE**  
*Photographs by David and Peter Turnley*  
 240 illustrations, 208 in full color, 240 pages, 0-7892-0299-9, \$60.00



**THE INTERNATIONAL DESIGN YEARBOOK 12**  
*Edited by Philippe Starck*  
 500 color illustrations, 240 pages, 0-7892-0292-1, \$85.00



**MICHELANGELO: THE VATICAN FRESCOES**  
*Text by Pierluigi De Vecchi and Gianluigi Colalucci*  
 200 color illustrations, 272 pages, 0-7892-0142-9, \$85.00



**MINIMALISM**  
**ART OF CIRCUMSTANCE**  
*Text by Kenneth Baker*  
 48 color and 80 black-and-white illustrations, 144 pages, 0-89659-887-X, \$45.00



**NORWEGIAN FOLK ART**  
**THE MIGRATION OF A TRADITION**  
*Edited by Marion Nelson*  
 239 color and 44 black-and-white illustrations, 280 pages, 0-7892-0196-8, (paper) \$45.00



**ON EXHIBIT: ART LOVER'S GUIDE TO AMERICAN MUSEUMS 1997**  
*Text by Patty Sowalsky and Judith Swirsky*  
 over 750 museums, 448 pages, 0-7892-0363-4, \$19.95



**A WORLD HISTORY OF PHOTOGRAPHY**  
**THIRD EDITION**  
*Text by Naomi Rosenblum*  
 97 color and 734 black-and-white illustrations, 696 pages, 0-7892-0028-7 (cloth), \$65.00  
 0-7892-0329-4 (paper), \$40.00



**GODDESSES IN ART**  
*Text by Lanier Graham*  
 170 color illustrations, 144 pages, 0-89660-068-8, \$19.98



**TINY FOLIOS™ GODDESSES**  
*Text by Lanier Graham*  
 288 pages, 0-7892-0269-7, \$11.95

VISIT US AT TABLE 14



ABBEVILLE PUBLISHING GROUP  
 488 MADISON AVENUE • NEW YORK, NY 10022  
 TELEPHONES (212) 888-1969 / (800) ARTBOOK • FAX (212) 644-5085

Visit us at Booth #26

# Ashgate

SCOLAR PRESS

Ashgate has recently brought together its former academic imprints—including **Scolar Press**—under a single name and identity. This allows Ashgate to more effectively utilize its extensive international editorial and marketing resources and increase its level of service to its customers and authors.

As always, the focus remains on producing high-quality books featuring outstanding international scholarship in art and art history. If you would like to know more, stop by our booth in the exhibits area, or visit our new website at [www.ashgate.com](http://www.ashgate.com).

New from Ashgate



### Victorian Illustration

*The Pre-Raphaelites, the Idyllic School and the High Victorians*  
 Paul Goldman

Details the work of 31 artists during a period which saw some of the finest contributions to British wood-engraved book and magazine illustration.

ISBN: 0-85967-864-4 *Standard Edition*  
 ISBN: 1-85928-318-7 *Limited Edition*

Look for these and other titles on display—

*The Art of George du Maurier* by Richard Kelly

*Boudin to Dufy* edited by Timothy Wilcox and Margot Heller

*Indigo Days* by Julian Trevelyan

*Re-framing the Pre-Raphaelites* edited by Ellen Harding

*Problem Pictures* by Pamela Gerrish Nunn

*The Engraved Record of the Jacobite Movement* by Richard Sharp

## Ashgate

Old Post Road • Brookfield, VT 05036-9704  
 Toll-Free (US & Canada): (800) 535-9544 • Fax: (802) 276-3651  
 E-mail: [info@ashgate.com](mailto:info@ashgate.com) • Website: <http://www.ashgate.com>

# ANTIQUÉ COLLECTORS' CLUB

"For selectors, the expanding distribution lists from Antique Collectors' Club ...make the job of tracking [smaller publishers] easier." - *Library Journal*



## VINCENT VAN GOGH COMPLETE PAINTINGS AND DRAWINGS

Sjraar van Heugten  
**Volume 1: Drawings  
The Early Years 1880-83**  
0 85331 721 6 \$100.00

**Volume 2: Drawings  
Brabant Period 1883-85**  
0 85331 731 3 \$100.00

*(Standing orders now  
being taken for the  
complete 8 - volume set.)*

## THE DICTIONARY OF BRITISH PORTRAIT PAINTERS UP TO 1920

Brian Stewart  
1 85149 173 2 \$99.50 hc  
500 pp; 66 color, 370 b&w illus

## SOtheBY'S ART AT AUCTION The Year in Review 1995-96

1 85029 787 8 \$85.00 hc  
256 pp; over 300 color illus

## DE CHIRICO AND AMERICA

Maurizio Fagiolo dell'Arco  
88 422068 22 \$55.00 pb  
240 pp; 30 color, 63 b&w illus

## THE QIN TERRACOTTA ARMY

*Treasures of Lintong*  
Zhang Wenli  
0 85667 450 8 \$30.00 hc  
96 pp; 120 color illus

## AUGUST SANDER

Christoph Schreier  
1 85514 196 5 \$59.50 hc

## ALBERTO GIACOMETTI 1901-1966

Patrick Elliott  
0 903598 61 2 \$39.95 pb  
192 pp.80 color, 300 b&w illus

## THE NORWICH SCHOOL

Josephine Walpole  
1 85149 261 5 \$59.50 hc

## BELLOTO IN DRESDEN

*Dresden, Vienna, Monaco*  
Alberto Rizzi  
88 806502 15 X \$125.00  
280 pp; 91 color, 189 b&w illus

## ECKART MUTHESIUS

*International Style 1930  
The Maharaja's Palace in Indore:  
Architecture and Interior*

Dr. Reto Niggli  
3 925369 55 4 \$59.00 hc  
160 pp; 150 color illus

## MURANO 1910-1970

*From Decorative Art to Design*  
Marc Heiremans  
3 925369 63 5 \$95.00 hc  
184 pp; 150 color illus

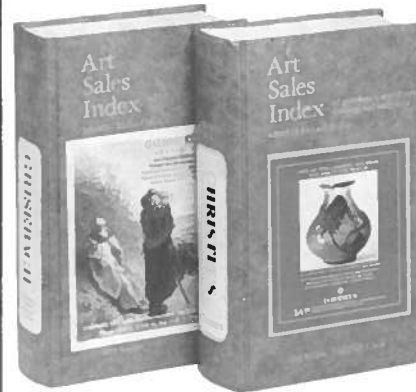


## ANTIQUÉ COLLECTORS' CLUB

Market Street Industrial Park  
Wappingers Falls, NY 12590  
Tel: (800) 252-5231 • Fax (914) 297-0068  
<http://www.antiquecc.com>

# ART SALES INDEX

The art price guide, you can trust



28th edition for the 1995/96 season  
listing over 112,500 works of art by  
36,000 artists selling at 2,300 auctions  
by 400 auction houses

**\$185.00** Books sent by airmail

Post paid. No handling charges

CHEQUE, VISA, AMEX, ACCESS

*Orders receive a free copy  
of the latest Art Market Report*

## ARTQUEST

On-line service since 1983

24 hours a day, 7 days a week. Easy to use with a PC & modem. A typical search can be completed quickly, at \$1.20 per minute. Download up to 300 entries a minute and then view off-line.

Search options include:

- by word in title
- by picture detail
- by size range
- by date range
- by highest price
- by most recent entry
- by media
- by price range

*Call for a free trial of ArtQuest*



## CD ROM 1990-96

Vital reference source giving details  
of over 647,500 auction sales  
by 96,000 artists that sold at  
13,200 auctions at  
580 auction houses

**\$595.00** post paid

*Demo Disk Available*

Covering works of oil, acrylic, tempera, gouache, watercolor, pastel, crayon, charcoal, drawing, chalk, photographs, prints, sculpture & miniatures. **Now including estimates.**  
Essential for appraisers, art collectors, dealers, galleries, libraries & auctioneers.

For orders and further information contact: Art Sales Index Ltd., (Dept. ARLIS/C), 1 Thames Street, Weybridge, Surrey KT13 8JG, UK Tel: 011 44 1932 856426 Fax: 011 44 1932 842482  
Email: [asi@globalnet.co.uk](mailto:asi@globalnet.co.uk) Internet: <http://www.globalnet.co.uk/~asi>

F·A·BERNETT·INC



Rare & Scholarly Books  
on the

◆  
FINE & DECORATIVE ARTS  
ARCHITECTURE  
ARCHAEOLOGY  
◆



144 Lincoln Street  
Boston, M.A. 02111

Tel 617-350-7778

Fax 617-350-7722

CATALOGUES ON REQUEST

## BOOKS OF APPLIED VISUAL DESIGN & ART



OVER

**400**

Titles Available



- Art
- Architecture
- Graphic Design
- Illustration
- Japanese Books
- Fashion Design
- Photography
- Textile Design
- Japanimation
- Fashion

**1-800-562-1410**

Call for FREE COLOR CATALOG

**NIPPAN**

1123 Dominguez St. #K Carson, CA 90746  
Tel : (310) 604-9701 Fax : (310) 604-1134



# STOP PRESS !

## design and applied arts index on CD-ROM

[ New edition ]

Forget anything you may have seen before. Using the latest database software, daai on CD-ROM has been completely redesigned.

New features include:



### A SIMPLE AND FAST 'ONE-STOP' SEARCH FACILITY

If a search turns up nothing in the Subject Index, it will automatically switch to a full text search.



### A TALK FACILITY

The screen text can be read to you (optional male or female voice). A feature of particular value to partially-sighted and dyslexic users.



### FRENCH AND GERMAN TEXT

The on-screen instructions can be viewed in English, French or German (other languages, including Dutch, Italian and Spanish, will follow). daai on CD-ROM also contains glossaries in French and German of the key terms used in the index.



### A TOUCH SCREEN OPTION

You can dispense with the keyboard and mouse if you want to.

daai on CD-ROM now contains over details of over 100,000 articles from international design and craft journals published between 1973-1996, making it the largest database of its kind in the world.

If you want to know more about daai on CD-ROM and would like to receive a FREE demonstration disc, see us at the Conference or contact:

#### DESIGN DOCUMENTATION

Woodlands . Stone Cross . Mayfield . East Sussex TN20 6EJ . England

Phone: +44 1435 873763 Fax: +44 1435 873759

E-mail: [design\\_documentation@compuserve.com](mailto:design_documentation@compuserve.com)

WWW: [http://ourworld.compuserve.com/homepages/design\\_documentation](http://ourworld.compuserve.com/homepages/design_documentation)

FROM  
**Eye**



Come see *The Dictionary of Art* at Table #29

"There's no art publication in existence that gives the reader such richness of detail and coherence of organization."  
—Robert Hughes, TIME

TO  
**Icon**



"A major triumph for what will clearly be the outstanding art reference tool for many generations of scholars."  
—LIBRARY JOURNAL

"Vast and glimmering—the world's grandest monument to visual art"  
—CHICAGO TRIBUNE

## *The Dictionary of Art*

**THE ULTIMATE AUTHORITY**  
on all the visual arts

34 VOLUMES • 6,700 SCHOLARS  
15 YEARS IN THE WRITING • \$8,800



Groves Dictionaries Inc.  
150 FIFTH AVENUE, SUITE 916, NEW YORK, NY 10011  
FOR MORE INFORMATION CALL 800.336.0955 OR IN NY 212.647.0182 FAX 212.647.0290 E-MAIL: [DICTART@PIPELINE.COM](mailto:DICTART@PIPELINE.COM)

[WWW.GROVEARTMUSIC.COM](http://WWW.GROVEARTMUSIC.COM)  
© C. HERSCOVICI, BRUSSELS/ARTISTS RIGHTS SOCIETY (ARS), NEW YORK, ICON: GIRAUDON/ART RESOURCE, NY

ERASMUS

Your supplier for  
French books

For further information please contact:

Librairie Erasmus  
28, rue Basfroi  
75011 Paris, France  
Tel.: +33-1-43 48 03 20  
Fax: +33-1-43 48 14 24  
E-mail: erasmus@erasmus.fr

Erasmus

- Professional
- Traditional
- Academic



## STOP BY BOOTH #10 TO SEE THESE AND OTHER TITLES ON DISPLAY...

### *Craftsman House*



*Contemporary Art in New Mexico*  
Jan Adlmann with Barbara McIntyre

*De Chirico*  
*The New Metaphysics*  
Maurizio Calvesi and Mario Ursino

*Art and Suburbia*  
Chris McAuliffe

*Asian Women Artists*  
Dinah Dysart and Hannah Fink

### *Gordon and Breach Publishers*

From the book series  
**Documenting the Image:**  
*"A Higher Branch of The Art"*  
Photographing the Fine Arts in  
England, 1839-1880  
Volume 4 · Anthony J. Hamber

### *G+B Arts International Magazines*

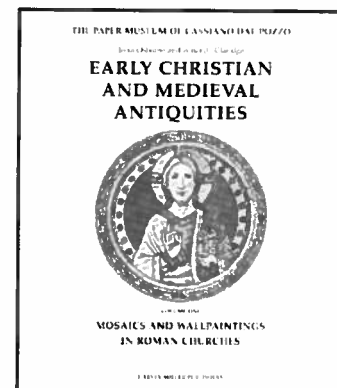
*World Art*  
*Contemporary Art*  
*ART AsiaPacific & ART and Australia*  
*Neue Bildende Kunst*

### *G+B Arts International*

From the new book series  
**Critical Voices:**  
*Seams*  
Art as a Philosophical Context  
Essays by Stephen Melville  
Edited and Introduced by Jeremy Gilbert-Rolfe

*Capacity*  
The History, the World, and the Self in  
Contemporary Art and Criticism  
Essays by Thomas McEvilley  
Commentary by G. Roger Denson

### *Harvey Miller Publishers*



*The Paper Museum of  
Cassiano dal Pozzo*  
Mosaics and Wallpaintings  
in Roman Churches  
John Osborne and Amanda Claridge

*A Survey of Manuscripts  
Illuminated in France*  
Romanesque Manuscripts:  
The Twelfth Century  
Walter Cahn

...G+B ARTS INTERNATIONAL

820 Town Center Drive · Langhorne, PA 19047 · +1 (800) 545-8398 · fax +1 (215) 750-6343

# Gordon's Distinctive Art Reference Publications Deliver Accuracy, Reliability and Completeness!

Now in its 20th edition, *Gordon's Print Price Annual* is the title no one in the art community can afford to be without. Libraries and museums especially find that *Gordon's* is the most complete auction based guide.

- Nearly 1,400 pages of facts, figures, and prices.
- Over 37,000 actual prices realized at auctions worldwide between January and December 1996.
- Encompasses Old Master to Contemporary prints, posters, illustrated books, books with prints, Picasso ceramics.
- Current and entirely revised bibliographical and catalogue raisonne sections for titles published through 1996.



1997 Edition \$225  
Clothbound

Visit us at  
Table 42

## Also Available on CD-ROM!

Locating more than 400,000 prints by over 11,000 artists has never been simpler or faster! You'll quickly discover "volumes" of data on your particular prints in just seconds. In addition to all of the outstanding features of the print version, you'll find:



1997 CD-ROM \$595  
Annual Update \$295

- 12 years (1997-1986) of *Gordon's Print Price Annual* on a single disc.
- Significantly enhanced search capabilities.
- Trilingual print lexicon.
- Worldwide directory of the print community.
- Available for Windows and Macintosh.

Gordon's Art Reference, Inc.  
1840 8th Street South, Naples, FL 34102  
800-892-4622 TOLL FREE  
941-434-6969 FAX

# G·K·Hall&C<sup>o</sup>

A Division of Macmillan Publishing USA

## AFRICAN ETHNONYMS

INDEX TO ART-PRODUCING  
PEOPLES OF AFRICA

Daniel Biebuyck, Susan Kelliber,  
and Linda McRae

1996 6 x 9 325 pp.  
0-7838-1532-8 Cloth \$100.00

*African Ethnonyms* is a comprehensive index of more than 2,500 names of ethnic groups taken from numerous sources, including linguistic and ethnographic surveys of Africa, as well as from more than one hundred major books and catalogs of African art. Its emphasis is on the art of sub-Saharan Africa, with the term "art" interpreted broadly to include ornamental design, architecture, textiles, and body adornment, in addition to the more traditional arts of masks and sculpture.

## TWENTIETH-CENTURY

ARTISTS ON ART

AN INDEX TO WRITINGS,  
STATEMENTS,  
AND INTERVIEWS  
BY ARTISTS, DESIGNERS, AND  
ARCHITECTS

Jack S. Robertson

Second Edition, Revised and Enlarged  
1996 6 x 9 820 pp.  
0-8161-9059-3 Cloth \$100.00

The *Revised and Enlarged* edition indexes more than 930 monographs, exhibition catalogs, and periodicals; the contents of these publications are not cataloged or indexed anywhere else.

## ANCIENT PERUVIAN ART

AN ANNOTATED BIBLIOGRAPHY

Helaine Silverman

1996 6 x 9 est. 250 pp.  
0-8161-9060-7 Cloth \$100.00

This new volume in G.K. Hall's celebrated series *Reference Publications in Art History* provides comprehensive bibliographical information of books, journal articles, and exhibition catalogs on ancient Peruvian art. International in scope, the bibliography lists sources from many countries and in many languages. This is an extensive, annotated bibliography of approximately 1,500 citations to the art of the ancient Andes.

## SPANISH ARTISTS

FROM THE FOURTH TO THE  
TWENTIETH CENTURY

A Critical Dictionary

Frick Art Reference Library

4 volumes — NOW COMPLETE  
8 1/2 x 11 est. 2,700 pp.  
Set: 0-8161-0614-2 \$420.00

"This traditional tool, derived from the library's artist authority files, is the result of meticulous and thorough authority work, and it will prove essential for research in Spanish art and architecture. . . . required for specialized scholarly collections . . ."

— CHOICE

To place an order by phone or to request a catalog, call toll-free:  
1-800-223-2336

## **Publishers can play a part in preserving your historic source material.**

IDC Publishers is this year celebrating 40 years as a publisher of rare and inaccessible scientific and historic material on microfiche and digital media.

IDC has already filmed many collections in innumerable libraries throughout the world for subsequent publication world-wide.

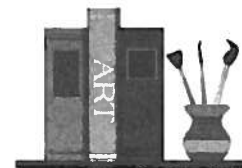
IDC Publishers can preserve your historic source material on microfiche and can arrange for the costs involved to be recouped by publishing the material on microfiche or digitally. IDC Publishers will even bear all the preservation costs in certain cases.

IDC Publishers has in-house and outside specialists to inform, advise and assist you in publishing your collection.

Visit stand no. 18 where IDC's Project Manager, Liesbeth Hugenholtz, will be happy to discuss ideas for new projects.



<i>The Netherlands</i>	Phone +31 (0)71 514 27 00	<i>North America</i>	Phone 718 432 1400
IDC Publishers	Fax +31 (0)71 513 17 21	IDC Publishers Inc.	Toll free 800 757 7441
P.O. Box 11205	E-mail <a href="mailto:info@idc.nl">info@idc.nl</a>	3265 Johnson Avenue	Fax 718 432 0020
2301 EE Leiden	Internet <a href="http://www.idc.nl">http://www.idc.nl</a>	Riverdale, NY 10463	E-mail <a href="mailto:idc-us@mindspring.com">idc-us@mindspring.com</a>



## **Kevin Mullen, Bookseller**

*Specializing in Material Relating to American Art and Artists*

### **RARE AND OUT-OF-PRINT PUBLICATIONS RELATED TO AMERICAN ART AND ARTISTS**

- \* Monographs**
- \* Exhibition Catalogues**
- \* Auction Catalogues**
- \* Gallery Catalogues**
- \* Annual Exhibitions**
- \* Periodicals**

Kevin Mullen, Bookseller maintains a select stock of 6000+ titles relating to American Art and Artists, each indexed and cross-referenced in a meticulously maintained and ever-growing database. Visit me on the WEB or EMAIL me with specific needs or concerns. Want lists encouraged.

**WORLD-WIDE search for ALL art and non-art titles.**

**Collection Development Services.**

**I am ALWAYS interested in purchasing libraries and individual volumes and will travel to make you a generous offer.**

EMAIL: [kmullenb@concentric.net](mailto:kmullenb@concentric.net)  
<http://www.mullenbooks.com>  
717-426-4800  
717-426-4002 (FAX)

**Kevin Mullen, Bookseller**  
P.O. Box 472  
Marietta, Pennsylvania  
17547

## ART REFERENCES

### New and recent titles from **SCARECROW PRESS**

#### LIVES AND WORKS

##### *Talks with Women Artists, Volume II*

Beryl Smith, Joan Arbeiter, and Sally Shearer Swenson

1996 280 pp. 0-8108-3153-8 \$58.00

A collection of 14 candid and often poignant interviews with women artists who talk about their life works.

#### LATIN AMERICAN ARTISTS' SIGNATURES AND MONOGRAMS

##### *Colonial Era to 1996*

John Castagno

Summer 1997 600 pp. 0-8108-3293-3 \$145.00

Lists 1,100 artists and 1,650 signature examples of how they sign their art. When available, entries include birth and death dates, birth-place, schools of study, countries of work/travel, auction citations, exhibitions, awards, review and literature sources, and gallery agents.

#### OLD MASTERS SIGNATURES AND MONOGRAMS, 1400-BORN 1800

John Castagno

1996 396 pp. 0-8108-3082-5 \$110.00

"...provides valuable and needed research information...well researched and very much needed by anyone who has any interest in old master art work or may expect to own or purchase old paintings. It is well recommended." —THE ANTIQUER'S GUIDE

#### CHARLES BURCHFIELD

##### *An Annotated Bibliography*

Colleen L. Makowski

1996 224 pp. 0-8108-3131-7 \$47.50

For scholars exploring the career of the artist and the period in which he worked, provides access to listings of his exhibitions and museum collections where his art can be found along with books, articles, films, and exhibition catalogs.

#### GERMAN IMMIGRANT ARTISTS IN AMERICA

##### *A Biographical Dictionary*

Peter C. Merrill

1996 352 pp. 0-8108-3266-6 \$49.00

Provides concise biographical information and sources on more than a thousand German immigrant artists in America from colonial times to the present.

#### ABSTRACT EXPRESSIONIST WOMEN PAINTERS

##### *An Annotated Bibliography*

Françoise S. Puniello and Halina R. Rusak

1996 372 pp. 0-8108-2998-3 \$55.00

Annotates books, catalogs, and journal articles with references to Elaine de Kooning, Helen Frankenthaler, Grace Hartigan, Lee Krasner, Joan Mitchell, and Ethel Schwabacher.

#### CONTEMPORARY LATIN AMERICAN ARTISTS

Edited by Annick Sanjurjo

##### *Exhibitions at the Organization of American States 1941-1964, Volume II*

1997 528 pp. 0-8108-3281-X \$75.00

Contains information on those internationally known artists who have exhibited at the Museum of Modern Art of Latin America in the Organization of American States headquarters in Washington, D.C. Together, these two volumes of the set record approximately 750 exhibitions including more than 2,000 artists.

##### *Exhibitions at the Organization of American States, 1965-1985, Volume I*

1993 733 pp. 0-8108-2644-5 \$92.50

"...Sanjurjo has gone a long way in redressing the neglect in the literature of a continent and a culture's artistic achievements..."

—ART DOCUMENTATION

*Two-volume set*  
0-8108-3282-8 \$145.00

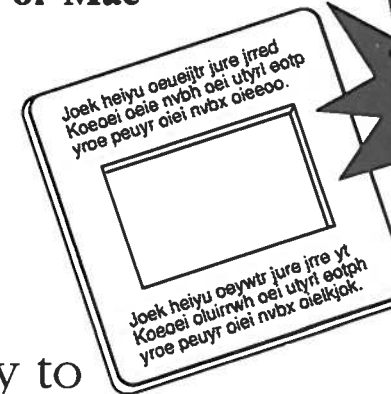


**SCARECROW PRESS**

4720 Boston Way • Lanham, MD 20706  
1-800-462-6420

# Software.....

IBM or Mac



PRICES  
START  
AT  
\$19.95

Easy to

Use LABELbase™ program

- **LABELware**  
- for captioning
- **LABELmate**  
- captioning and memory
- **LASERware**  
- for your Laserprinters
- **LABELbase**  
- for managing your slides:  
Keyword, phrase, number search, and more!

**SlideScribe** ™

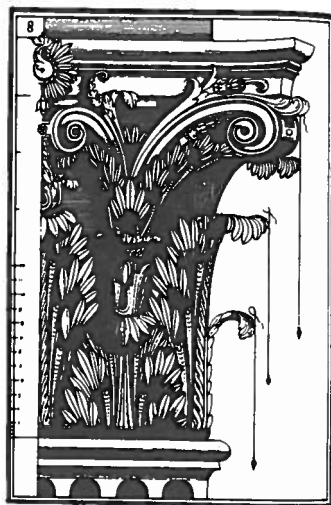
1-800-345-4118

612-942-7909

Archival Labels, slide protectors, adhesive storage and handling products, and MORE!!

WEBB • WREN • ADAM • ALBERTI • ASHBEE • BEHRENS • BLONDEL

• LASDUN • LE CORBUSIER • MANSART • PALLADIO • ROSSI • SWAN • VITRUVIUS •



FINE ANTIQUARIAN AND OUT-OF-PRINT  
BOOKS ON ARCHITECTURE, FURNITURE,  
INTERIORS AND RELATED FIELDS

New catalogue available shortly, to include books  
from the Library of Sir Andrew Fountaine

### HENRY SOTHERAN LIMITED

*Antiquarian Booksellers*

2 Sackville Street, Piccadilly London W1X 2DP

Telephone 0171 439 6151 Fax 0171 434 2019

• BORROMINI • CHAMBERS • COCKERELL • DUTERT • EAMES • EMBERTON • FONTANA •

GABRIEL • GWILT • HAWKSMOOR • HOFFMANN • JONES • KAHN • KLEINER



Armin Landeck, *North River Vista (Looking Toward the Hudson River)*, lithograph, 1932,  
sold on November 14, 1996 for a record \$21,850.

## SWANN GALLERIES

Auctioneers & Appraisers Specializing in

Rare Books • Autographs & Manuscripts • Maps & Atlases  
Photographs • Prints & Drawings • Posters

April 19: 19TH & 20TH CENTURY PHOTOGRAPHS

*Illustrated Catalogue \$25 US/\$35 Overseas*

May 8: MODERN PRESS & ILLUSTRATED BOOKS

*Catalogue \$10*

May 22: WORKS OF ART ON PAPER

*Illustrated Catalogue \$25 US/\$35 Overseas*

June 19: ART & ARCHITECTURE BOOKS

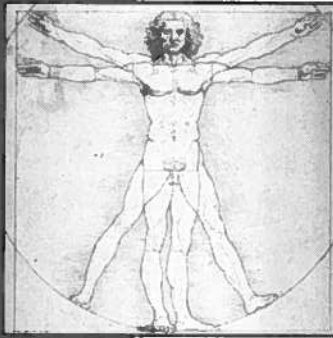
*Catalogue \$15*

For further information on buying and selling at Swann, please contact  
Christine von der Linn, Art & Architecture Books, Tobias Abeloff, Rare Books,  
Todd Weyman, Prints & Drawings, Daile Kaplan, Photographs and  
Photographic Literature, Nicholas Lowry, Posters.  
tel (212) 254-4710 ■ fax (212) 979-1017.

IAO Member International Association of Auctioneers

## SWANN GALLERIES

104 East 25th Street, New York, NY 10010 • (212) 254-4710



**Fast Digital Access to  
Information Shaping the  
World of Art**

# Art Abstracts



Internet



CD-ROM



Partners



Online



Tape



Since 1898

**For Artists, Students,  
Educators, Curators,  
Art Dealers:**

An expansive database for incisive access to new insights and developments. Here's where you'll turn first for answers in:

- Painting • Computers in Archeology, Architecture and Art • Archeology • Architecture and Architectural History • Art History • Landscape Architecture • Crafts • Decorative Arts • Folk Art • Graphic Arts • Pottery • Industrial Design • Textiles • Motion Pictures • Museology • Advertising Art • Photography • Interior Design • Sculpture • Television • Antiques.

*Stop by booth #19 for a free 60-day trial. For more information, come to our breakfast in the Loggia Room, Monday, April 7th, 7AM to 8AM, in the convention center.*

**H.W. Wilson Information for tomorrow, today**  
950 University Avenue • Bronx, NY 10452-4224 • 800-367-6770  
718-588-8400 • <http://www.hwwilson.com>

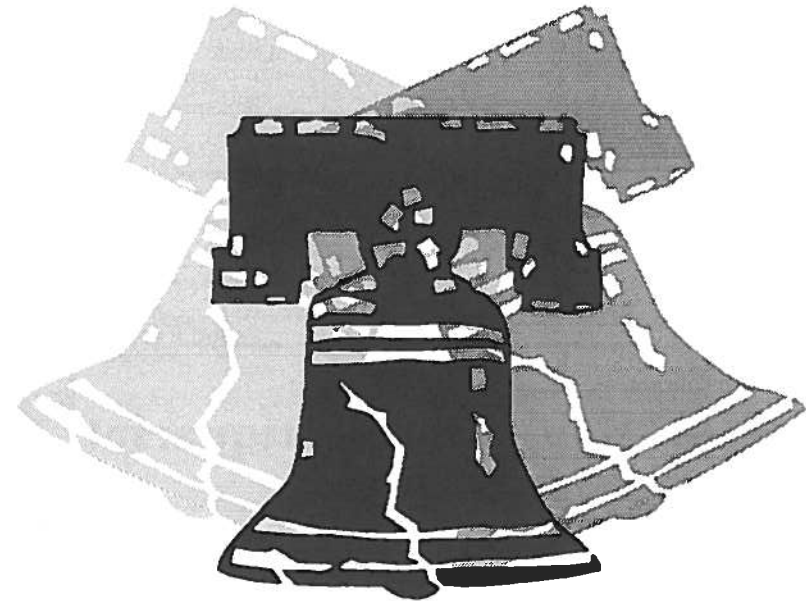
*Retrospective  
Coverage  
Coming in 1998!*

**A Perfect First Stop for  
In-Depth Research**

- Full abstracting of more than 260 publications worldwide from 1994; indexing from 1984
- Substantive abstracts, 50 to 150 words each
- Complete bibliographies
- Notations of maps, illustrations, portraits, tables, plans, and footnotes in articles
- More than 2,000 new records added each month
- Indexing by artist name tracks reproductions in 260 publications from 1984 to the present

Plan Now to Attend ARLIS/NA'S

# 1998 Annual Conference



March 5-13, 1998

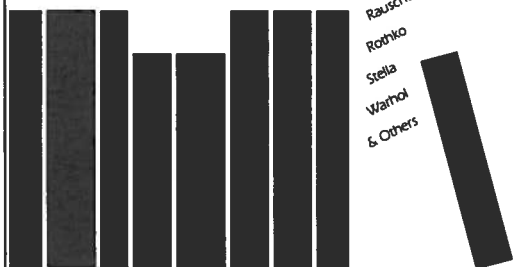
The Doubletree Hotel  
Philadelphia, Pennsylvania

**If you missed the exhibit**

Bauhaus  
Constructivism  
De Kooning  
Dine  
Duchamp  
Hodney  
Johns  
Matisse  
Monet  
Pop Art  
Rauschenberg  
Rothko  
Stella  
Warhol  
& Others

Exhibition Catalogues of Painting, Sculpture & Graphics on 20th Century Artists Current and Out-of-print

Send for our inventory catalogue:  
**Art Catalogues**  
43940 Battle Mountain Drive  
P.O. Box 650  
Springville, CA 93265  
1-800-835-4400  
Fax: 209-539-3162



## Design Book Review

DBR is back to independent publication. Don't miss our relaunch issue. *Home, House, Housing* available now!

ARCHITECTURE  
URBANISM  
LANDSCAPE  
DESIGN

D B  
R

### Forthcoming issues:

**[Anti]Humanism**  
**The Arts of Peace**  
**The Invention of Heritage**  
**Designs on the Pacific Rim**

DBR is published quarterly, with occasional enlarged double-issues. One-year subscription is equivalent to 4 volume numbers.  
Institutional rate: \$85.00

Design Book Review  
720 Channing Way  
Berkeley CA 94710  
Tel. 510.486.1956  
Fax. 510.644.3930  
DBReview@ix.netcom.com

Since 1983, *Design Book Review* has been the sole publication in the world devoted exclusively to the literature surrounding the fields of architecture, urbanism, landscape, and design. Praised by *The Library Journal* for its "lucid analyses of timely topics," each issue is organized around a specific theme, and features long and short book reviews, interviews with key figures, and essays inspired by the presence of new books. *DBR* was the recipient of the American Institute of Architects' 1995 International Architecture Book Publishing Award.

Like *The New York Review of Books*, *DBR* is acknowledged in the fields of design, architecture, and urbanism to be the best source for understanding the current state of the art and an indispensable reference to recent publications.

— **Anthony Vidler**  
*Dean, College of Architecture, Art and Planning, Cornell University*

db

db

## John Benjamins Antiquariat



## John Benjamins Publishing Co

welcome you  
to their book-exhibit  
during the 25th Annual Conference  
of the Arlis, April 3-9, 1997

db

db

## Casalini libri

*"General book dealers for Italian publications to libraries throughout the world with over forty years experience"*

Via Benedetto da Maiano, 3  
50014 Fiesole (FI) - Italy

Tel.: (+39-55) 5018.1  
Fax: (+39-55) 5018.201

gen@casalini.com  
<http://www.casalini.com>

### Our services include:

- Highly selective approval plans to meet every library's special requirements.
- Standing orders for series and multi-volume monographs
- Subscriptions to periodicals with direct, centralized mailing
- Library binding
- Management reports and statistics
- Bibliographic information for new publications:
  - in printed form*
  - bibliographic cards (free of charge) sent weekly or monthly; catalogues produced at regular intervals in different subject areas;
  - in electronic form*
  - USMARC and UNIMARC records on floppy disk, machine readable tape or via FTP.
- Specialized bibliographies compiled on specific subjects
- Web site giving full details of our services, special offers and access to our database which contains over 120,000 entries and is updated each week.
- EDI services (offers, orders, reports, claims, invoices, etc.)





SERVING LIBRARIES SINCE 1964!

**J. B. MUNS  
FINE ARTS BOOKS &  
MUSICAL AUTOGRAPHS**

1162 Shattuck Avenue  
Berkeley, CA 94707  
Tel: 510-525-2420  
Fax: 510-525-1126

Catalogs/lists issued on  
ART/ARCHITECTURE  
MUSIC/DANCE  
PHOTOGRAPHY  
FRANK LLOYD WRIGHT  
MUSICAL AUTOGRAPHS  
(Classical only)

Search Service Offered

*Business by Mail-order or Appointment Only*

# SANDAK

Art Slides

**22,000 Images to Choose From!**

- Ancient Art
- Contemporary Art
- Asian & Asian-American Artists
- African-American Artists
- Latin-American Artists
- Woman Artists
- Pre-Columbian Art
- Photography

*And Much More!*

**FREE** Catalogues and Customized Database Searches!

*Phone or Fax Your Requests:*

**(800) 343-2806 Fax: (203) 967-2745**

Outside Continental U.S. Call: (203) 969-0442

**SANDAK Art Slides • 180 Harvard Avenue • Stamford, CT 06902**

## international directory of design

4

万国の 住所氏名録 デザイン  
 le guide internationale de dessein  
 der international Adreßbuch für dessin  
 国际的设计指南  
 la guida internazionale del disegno  
 la guía internacional de diseño  
 интернационал справочник по дизайну

### New for 1997

—discipline specific directories \$70  
 Advertising, Communications & Graphic Design  
 Architecture, Urban & Landscape Design  
 Ceramics, Glass & Jewelry  
 Costume, Set & Theatrical Design  
 Decorative Arts & Ornament  
 Fashion, Fabric & Apparel  
 Film, Photography, Video & Television  
 Interior Design, Furniture & Furnishings  
 Industrial & Product Design  
 Multimedia, Computer Graphics & Interaction

Each directory contains contact information for:  
 Professional Societies  
 Trade Magazines  
 Academic Journals  
 Educational Institutions

<http://www.penrose-press.com/IDD>  
Every school may include 10 FREE slides on the site

To ensure that your school is included, please contact:

**Penrose Press**  
P.O. Box 470925, San Francisco, CA 94147 — Tel: +1 (415) 567 4157

paperback . . . . \$75  
hardbound . . . \$105

# Surveying the First Decade: Video Art and Alternative Media in the United States

**“At only \$67 per hour of programming, this is an unbeatable bargain!”**

—Debra Kruse, Librarian,  
Rhode Island School of Design

This comprehensive package on the history of experimental and independent video is an essential tool for teachers, libraries, and researchers. *Surveying the First Decade* includes:

- \* 17 hours of historic video on 9 VHS tapes;
- \* 68 seminal titles by over 50 artists, works from 1968 to 1980;
- \* **Rewind**, a 200+ page study guide.

**Call Video Data Bank for more information at 312-345-3550.**



## NOTES

---

## NOTES

---