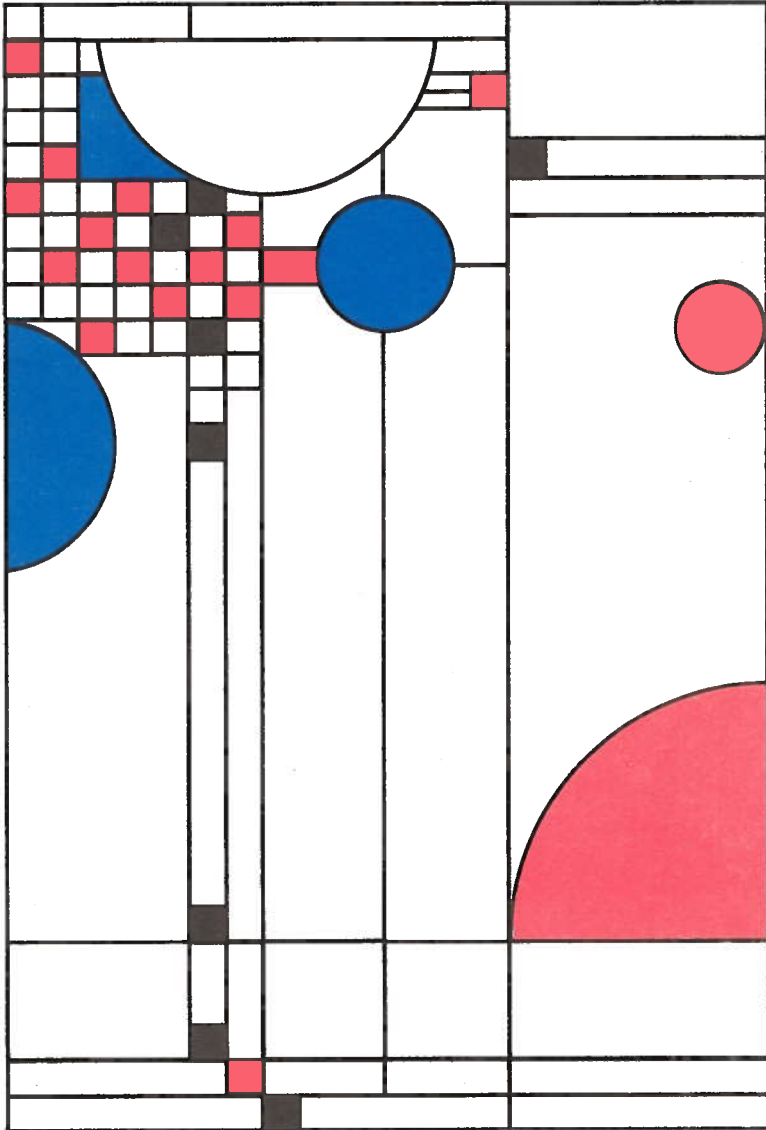


ARLIS/NA 20

Art Libraries of North America
Twentieth Annual Conference



C H I C A G O

Conference Program



ART LIBRARIES SOCIETY OF NORTH AMERICA

20TH ANNUAL CONFERENCE
CHICAGO HILTON & TOWERS
CHICAGO, IL
FEBRUARY 6 - 13, 1992

CONTENTS



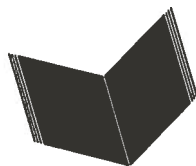
Sponsors	2
Acknowledgements	3
Exhibitors	4
General	5
Conference Program	9
Thursday, February 6	9
Friday, February 7	10
Saturday, February 8	12
Sunday, February 9	18
Monday, February 10	24
Tuesday, February 11	32
Wednesday, February 12	42
Thursday, February 13	45
Friday, February 14	46
Hotel Floor Plan	34-35

SPONSORS

ARLIS/NA and the 20th Annual Conference Chairs would like to acknowledge the generous support of the following businesses and institutions:

ABC-CLIO
Ars Libri
Casalini Libri
Centro Di
Dictionary of Art
Erasmus
F.A. Bennett Inc.
G.K. Hall & Co.
Hindman Auction Galleries
K.G. Saur
Otto Harrassowitz
Powell's Bookstore
Prairie Avenue Books
Puvill Libros
Worldwide Books

We extend a special thanks to Ars Libri for their sponsorship of the 20th Anniversary Party.



ARLIS/NA

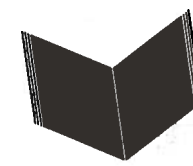


ARLIS/NA EXECUTIVE BOARD 1991

President: Merrill Smith, Massachusetts Institute of Technology, Rotch Library
Vice-President/President-Elect: Betty Jo Irvine, Indiana University, Fine Arts Library
Secretary: Barbara Polowy, Rochester Institute of Technology, Wallace Memorial Library
Treasurer: Eugenie Candau, San Francisco Museum of Modern Art, Ackerman Library
Past President: Lynette Korenic, University of California, Santa Barbara, Arts Library
Regional Representatives:
 Northeast: Thomas Jacoby, University of Connecticut, Art & Design Library
 South: Philip Rees, University of North Carolina, Chapel Hill, Sloane Art Library
 Midwest: Henry Pisciotto, Carnegie Mellon University, Libraries
 West: Kathryn Wayne, University of California, Berkeley, Environmental Design Library
 Canada: Irena Murray, McGill University, Blackader-Lauterman Library
Executive Director: Pamela J. Parry

ARLIS/NA 1992 CONFERENCE COMMITTEE

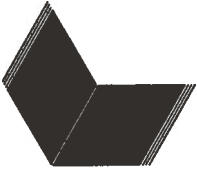
Conference Co-Chair (Program):
 David Austin, University of Illinois at Chicago
Conference Co-Chair (Local Arrangements):
 Leigh Gates, Art Institute of Chicago
Registration:
 Harlan Sifford, University of Iowa
Exhibits:
 Jennifer Trezona, Art Institute of Chicago
Tours and Transportation:
 Adeline Schuster, Harrington Institute of Interior Design
Publications and Printing:
 Rosann Auchstetter, Indiana University
Audiovisual and Computer Equipment:
 Fred Hillbruner, School of the Art Institute of Chicago
Convocation and Receptions:
 Sonja Staum-Kunie, Museum of Contemporary Art
Hospitality Suite:
 Nadene Byrne, School of the Art Institute of Chicago
Joint ARLIS/NA-CAA Session:
 Kathryn Deiss, Northwestern University
 Virginia Kerr, Doctoral candidate, University of Chicago
20th Anniversary:
 William Bunce, University of Wisconsin
 Janis Ekdahl, Museum of Modern Art, New York



EXHIBITORS



Acanthus Books
Alan Wofsy Fine Arts
Alecto Historical Editions
American Institute for Conservation of Historic
& Artistic Works
Antique Collectors Club
ArchiText
Ars Libri, Ltd.
Art and Architecture Thesaurus
Art in America Slide Survey
Art Institute of Chicago
Art Metropole
Art Trak Inc.
Association of American University Presses
Becker Books
BHA/RILA - Getty Art History Information
Program
Blackwell's
Books Nippan
Bulfinch Press/Little, Brown & Co.
Calligraphy Review Magazine
Cambridge University Press
Casalini Libri
Centro Di
Chadwyck-Healey Inc.
CLIO Press, Ltd./ABC-CLIO
Design and Applied Arts Index
The Dictionary of Art
Distributed Art Publishers
Emmett Publishing Ltd.
Erasmus B.V.
F.A. Bennett Books
G.K. Hall & Co.
Getty Art History Information Program
H.W. Wilson Company
Han-Shan Tang Ltd.
Harvey Miller Publishers



Howard Karno Books
Hudson Hills Press
Humanities Press
Institute for Scientific Information
IRSA Verlag
K.G. Saur/R.R. Bowker
Lang & Strider Press
Librairie Léonce Laget
Libros Latinos
Mindata Ltd.
Museum Computer Network
Music Library Association
Norman Ross Publishing, Inc.
Otto Harrassowitz
Powell's Bookstore
Puvill Libros
R.W. Smith - - Bookseller
Research Libraries Group
Royal Recovery Systems
Sandak, a Division of G.K. Hall
Scholar's Choice
Sound View Press
Thames and Hudson
Thomas Heneage Art Books
Universal Color Slide Co
University Products
Worldwide Books

GENERAL INFORMATION



ON-SITE REGISTRATION

For those unable to register early, on-site registration begins Thursday, February 6, 1992, at 3:00 p.m. An additional charge will be made for on-site registrations or those postmarked after January 6, 1992. Preregistration and payment of a fee is required for all tours and workshops.

REFUNDS

Requests for refund of registration fees must be received in writing at ARLIS/NA, 3900 E. Timrod Street, Tucson, Arizona 85711, no later than January 27, 1992. A \$5.00 processing fee will be deducted. No on-site refunds will be made. If events for which you have paid are filled by the time your registration form is received and no substitutes are available, you will be notified and a refund will be sent to you by mail.

REGISTRATION AND INFORMATION DESK

The hours for the Registration and Information Desk, located on the hotel's third level, are listed under Ongoing Services and Activities. As in the past, bulletin boards are provided for personal and professional messages. Registration and Information Desk staff will answer conference questions and supply general information about Chicago. Conference abstracts also can be purchased at this desk. Only cash or checks will be accepted.

SMOKING POLICY

Smoking is not permitted in conference meeting rooms or exhibits.

GUEST POLICY

If you plan to bring a guest, please observe the following ARLIS/NA guest policy: Guests of conferees are encouraged to register for the full conference. Unregistered guests will be permitted to join tours and special events on a space - available basis after all registered conferees have been accommodated.

THE HOTEL & PROGRAM INFORMATION



Overlooking Grant Park and Lake Michigan, the Chicago Hilton and Towers (formerly the Conrad Hilton), with 1,543 guest rooms, spacious ballrooms, two-story atrium lounge, and public areas filled with speciality shops, bars, and restaurants, is handsome on a grand scale. The hotel, designed by Holabird & Roche, first opened in 1927 as the Stevens Hotel. At that time, the hotel was billed as the largest in the world and offered such recreational extravaganzas as an 18-hole rooftop golf course. Restored to its former elegance in the early 1980s by Hilton at a cost of over \$185 million, the guest rooms are appointed with cherrywood furnishings, and the public areas feature chandeliers, paintings and murals, marble, intricate giltwork, and parquet floors. The top three floors of the Towers provide highly personalized services complete with their own registration area and concierge. Modern amenities include the Fun and Fitness Center, with an indoor running track, heated skylit swimming pool, and state-of-the-art exercise equipment, whirlpools, saunas, and massage area. The Chicago Hilton and Towers offer a wide variety of eating and drinking establishments. Diners may select from light to hearty menus from the hotel's many bars and restaurants: Buckingham's for steak and seafood for dinner; Kitty O'Shea's for traditional Irish food and spirits; the Fast-Lane Sports Deli for sandwiches and fast service; the Pavilion, the hotel's 24-hour coffee shop; and the Lakeside Green atrium lounge for cocktails and late-night entertainment after the ARLIS/NA Hospitality Suite closes. The hotel provides a shopping shuttle leaving from the lobby hourly from 10:00 a.m. to 5:00 p.m. with drop-points along Michigan Avenue, including the Art Institute of Chicago (which is within walking distance) and Chicago's Magnificent Mile (on upper Michigan Avenue, north of the Chicago River and site of some of the world's great stores). The conference registration and information area, meeting rooms, and exhibit area are all located

on the third and fourth floors of the hotel, and are accessible by elevators and stairways from the hotel's main lobby. The hotel is located at 720 South Michigan Avenue, telephone (312) 992-4400. Please note that reservations should be received by January 16, 1992. Hotel check-in time is 4:00 p.m.; check-out time is 11:00 a.m.

EXHIBITS

The exhibits will open on Monday, February 10, with a complimentary continental breakfast from 8:00 a.m. to 10:00 a.m. Preregistration is required for the breakfast. Hours for the exhibit hall, located on the third floor next to the Registration Desk, are listed under Ongoing Services and Activities. Exhibitors include publishers, book dealers, visual resources suppliers, and vendors of computer software and systems. Demonstrations will be held in locations posted in the Registration and Information area. Please visit the exhibits often, since exhibitors rely on your input and patronage. The exhibits provide an excellent opportunity to view a wide range of new products and services. The exhibits are also a vital source of income to the society, so your attendance is important in making the exhibits a success.

HOSPITALITY SUITE

An ARLIS/NA hospitality suite will be operating during the conference. Hours are listed under Ongoing Services and Activities and will be posted at the Registration and Information Desk. Wine, beer, and soft drinks will be available at a cash bar staffed by ARLIS/NA volunteers.

THE HOTEL & PROGRAM INFORMATION



NEW MEMBERS AND FIRST-TIME ATTENDEES

Registrants attending their first ARLIS/NA conference will be so designated on their name badges, and all conference attendees are encouraged to introduce themselves and make our new members feel welcomed. Merrill Smith, president of ARLIS/NA, invites all new members and first time-attendees to an ARLIS/NA Conference Orientation Session on Saturday, February 8, from 4:45 p.m. to 6:15 p.m., followed by dinner (Dutch Treat) with members of the ARLIS/NA Executive Board. Participants will be able to meet one another, learn about ARLIS/NA as an organization and also how to become more involved in the society at the chapter and society level. All conference attendees, not just new members, are welcome to join the group for dinner.

TWENTIETH ANNIVERSARY CELEBRATION AND FUNDRAISER

ARLIS/NA is celebrating its 20th anniversary this year on Monday evening, February 10, with an open bar, an array of comestibles and dancing amid coral reefs, rain forest firs, and festive tropical fish and whales of the Shedd Aquarium. This gala celebration, continuing the long tradition of legendary Ars Libri-sponsored receptions, will also be a frolicsome fundraiser. All conference attendees are invited to participate in the festivities, but at Ars Libri's request, all who are able to purchase an event ticket are asked to do so, for all proceeds will be used by ARLIS/NA to create a fund to support newly adopted sections of the ARLIS/NA Strategic Plan as well as to seed a special projects fund. The coral reef denizens will be wearing their best festive attire, and so should you — formal or fun! Everyone is invited to make their own splash and enjoy our kind host's hospitality. Come and toast ARLIS/NA's past and support our future!

INDIANA REUNION

A significant number of ARLIS/NA members have been associated with Indiana institutions, including colleges, universities, and museums. It's time that we have an opportunity to talk to old friends and meet new ones with whom we share Indiana connections. Betty Jo ("BJ") Irvine is sponsoring the Indiana Reunion. Please join her for an evening of memories. Refreshments, a cash bar, and surprises will be provided.



ONGOING ACTIVITIES AND SERVICES



REGISTRATION/INFORMATION DESK

Thursday, February 6	3:00 p.m.-8:00 p.m.
Friday, February 7	12:00 Noon-8:00 p.m.
Saturday, February 8	7:30 a.m.-8:00 p.m.
Sunday, February 9	9:00 a.m.-6:00 p.m.
Monday, February 10	9:00 a.m.-6:00 p.m.
Tuesday, February 11	9:00 a.m.-6:00 p.m.
Wednesday, February 12	7:30 a.m.-9:00 a.m.

HOSPITALITY SUITE

Friday, February 7	9:00 p.m.-12:00 Midnight
Saturday, February 8	9:00 p.m.-12:00 Midnight
Sunday, February 9	9:30 p.m.-12:00 Midnight
Monday, February 10	10:00 p.m.-12:00 Midnight
Tuesday, February 11	9:00 p.m.-12:00 Midnight

EXHIBIT HOURS

Monday, February 10	8:00 a.m.-10:00 a.m. (<i>Opening Breakfast</i>) 10:00 a.m.-12:30 p.m. 4:00 p.m.-6:00 p.m.
Tuesday, February 11	8:30 a.m.-12:30 p.m. 2:00 p.m.-5:00 p.m.

THURSDAY,
FEBRUARY 6

ARLIS/NA CONFERENCE PROGRAM

3:00 p.m.-8:00 p.m.

THIRD FLOOR LOBBY

REGISTRATION AND INFORMATION DESK

7:00 p.m.-10:00 p.m.

MCCORMICK ROOM

ARLIS/NA EXECUTIVE BOARD MEETING

(Open to membership on a seating-available basis)

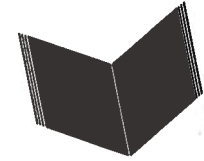
FRIDAY, FEBRUARY 7, 1992
DAY-AT-A-GLANCE

7:00 a.m.
8:00 a.m.
9:00 a.m.
10:00 a.m.
11:00 a.m.
12:00 Noon
1:00 p.m.
2:00 p.m.
3:00 p.m.
4:00 p.m.
5:00 p.m.
6:00 p.m.
7:00 p.m.
8:00 p.m.
9:00 p.m.
10:00 p.m.
11:00 p.m.
12 Midnight

	ARLIS/NA Executive Board Meeting	AAL/RLG Business Meeting
Registration & Information		
		SCIPIO/RLG Business Meeting
Hospitality Suite		

FRIDAY,
FEBRUARY 7

ARLIS/NA CONFERENCE PROGRAM



8:00 a.m.-5:00 p.m.

ARLIS/NA EXECUTIVE BOARD MEETING

MCCORMICK ROOM

(Open to membership on a seating-available basis)

9:00 a.m.-4:00 p.m.

**ART & ARCHITECTURE LIBRARIES,
RESEARCH LIBRARIES GROUP
(RLG) MEETING**

MARQUETTE ROOM

COORDINATOR

Jeannette Dixon, Librarian, Museum of Fine Arts, Houston
(Open to AAL/RLG members only)

12:00 Noon-8:00 p.m.

REGISTRATION AND INFORMATION DESK

THIRD FLOOR LOBBY

5:30 p.m.-7:00 p.m.

**SCIPIO SUPERVISORS, RESEARCH LIBRARIES
GROUP (RLG) MEETING**

PRIVATE DINING ROOM 5

COORDINATOR

Ann L. Jones, Serials Librarian, Ryerson and Burnham Libraries,
Art Institute of Chicago

9:00 p.m.-12:00 Midnight

HOSPITALITY SUITE

SATURDAY, FEBRUARY 8, 1992 DAY-AT-A-GLANCE

7:00 a.m.	Registration & Information		ARLIS/NA Executive Board Meeting		Standards Committee Business Meeting (Staffing)		Workshop I-A* OCLC/EPIC		Workshop II-A* Managing Change		Tour A-1* Public Art: Pilsen & Logan Sq.		Tour B-1* Chicago Architecture		Tour C-1* Newberry Library		Workshop III* Using the AAT		Workshop IV* Using the AAT		Tour D-1* Art Galleries		Tour E-1* Harold Washington Library			
8:00 a.m.	ARLIS/NA Executive Board Meeting		Standards Committee Business Meeting (Staffing)		Workshop I-A* OCLC/EPIC		Workshop II-A* Managing Change		Workshop I-B* OCLC/EPIC		Workshop II-B* Problem Solving		Tour A-1* Public Art: Pilsen & Logan Sq.		Tour B-1* Chicago Architecture		Tour C-1* Newberry Library		Workshop III* Using the AAT		Workshop IV* Using the AAT		Tour D-1* Art Galleries		Tour E-1* Harold Washington Library	
9:00 a.m.	ARLIS/NA Executive Board Meeting		Standards Committee Business Meeting (Staffing)		Workshop I-A* OCLC/EPIC		Workshop II-A* Managing Change		Workshop I-B* OCLC/EPIC		Workshop II-B* Problem Solving		Tour A-1* Public Art: Pilsen & Logan Sq.		Tour B-1* Chicago Architecture		Tour C-1* Newberry Library		Workshop III* Using the AAT		Workshop IV* Using the AAT		Tour D-1* Art Galleries		Tour E-1* Harold Washington Library	
10:00 a.m.	ARLIS/NA Executive Board Meeting		Standards Committee Business Meeting (Staffing)		Workshop I-A* OCLC/EPIC		Workshop II-A* Managing Change		Workshop I-B* OCLC/EPIC		Workshop II-B* Problem Solving		Tour A-1* Public Art: Pilsen & Logan Sq.		Tour B-1* Chicago Architecture		Tour C-1* Newberry Library		Workshop III* Using the AAT		Workshop IV* Using the AAT		Tour D-1* Art Galleries		Tour E-1* Harold Washington Library	
11:00 a.m.	ARLIS/NA Executive Board Meeting		Standards Committee Business Meeting (Staffing)		Workshop I-A* OCLC/EPIC		Workshop II-A* Managing Change		Workshop I-B* OCLC/EPIC		Workshop II-B* Problem Solving		Tour A-1* Public Art: Pilsen & Logan Sq.		Tour B-1* Chicago Architecture		Tour C-1* Newberry Library		Workshop III* Using the AAT		Workshop IV* Using the AAT		Tour D-1* Art Galleries		Tour E-1* Harold Washington Library	
12:00 Noon	ARLIS/NA Executive Board Meeting		Standards Committee Business Meeting (Staffing)		Workshop I-A* OCLC/EPIC		Workshop II-A* Managing Change		Workshop I-B* OCLC/EPIC		Workshop II-B* Problem Solving		Tour A-1* Public Art: Pilsen & Logan Sq.		Tour B-1* Chicago Architecture		Tour C-1* Newberry Library		Workshop III* Using the AAT		Workshop IV* Using the AAT		Tour D-1* Art Galleries		Tour E-1* Harold Washington Library	
1:00 p.m.	ARLIS/NA Executive Board Meeting		Standards Committee Business Meeting (Staffing)		Workshop I-A* OCLC/EPIC		Workshop II-A* Managing Change		Workshop I-B* OCLC/EPIC		Workshop II-B* Problem Solving		Tour A-1* Public Art: Pilsen & Logan Sq.		Tour B-1* Chicago Architecture		Tour C-1* Newberry Library		Workshop III* Using the AAT		Workshop IV* Using the AAT		Tour D-1* Art Galleries		Tour E-1* Harold Washington Library	
2:00 p.m.	ARLIS/NA Executive Board Meeting		Standards Committee Business Meeting (Staffing)		Workshop I-A* OCLC/EPIC		Workshop II-A* Managing Change		Workshop I-B* OCLC/EPIC		Workshop II-B* Problem Solving		Tour A-1* Public Art: Pilsen & Logan Sq.		Tour B-1* Chicago Architecture		Tour C-1* Newberry Library		Workshop III* Using the AAT		Workshop IV* Using the AAT		Tour D-1* Art Galleries		Tour E-1* Harold Washington Library	
3:00 p.m.	ARLIS/NA Executive Board Meeting		Standards Committee Business Meeting (Staffing)		Workshop I-A* OCLC/EPIC		Workshop II-A* Managing Change		Workshop I-B* OCLC/EPIC		Workshop II-B* Problem Solving		Tour A-1* Public Art: Pilsen & Logan Sq.		Tour B-1* Chicago Architecture		Tour C-1* Newberry Library		Workshop III* Using the AAT		Workshop IV* Using the AAT		Tour D-1* Art Galleries		Tour E-1* Harold Washington Library	
4:00 p.m.	ARLIS/NA Executive Board Meeting		Standards Committee Business Meeting (Staffing)		Workshop I-A* OCLC/EPIC		Workshop II-A* Managing Change		Workshop I-B* OCLC/EPIC		Workshop II-B* Problem Solving		Tour A-1* Public Art: Pilsen & Logan Sq.		Tour B-1* Chicago Architecture		Tour C-1* Newberry Library		Workshop III* Using the AAT		Workshop IV* Using the AAT		Tour D-1* Art Galleries		Tour E-1* Harold Washington Library	
5:00 p.m.	ARLIS/NA Executive Board Meeting		Standards Committee Business Meeting (Staffing)		Workshop I-A* OCLC/EPIC		Workshop II-A* Managing Change		Workshop I-B* OCLC/EPIC		Workshop II-B* Problem Solving		Tour A-1* Public Art: Pilsen & Logan Sq.		Tour B-1* Chicago Architecture		Tour C-1* Newberry Library		Workshop III* Using the AAT		Workshop IV* Using the AAT		Tour D-1* Art Galleries		Tour E-1* Harold Washington Library	
6:00 p.m.	ARLIS/NA Executive Board Meeting		Standards Committee Business Meeting (Staffing)		Workshop I-A* OCLC/EPIC		Workshop II-A* Managing Change		Workshop I-B* OCLC/EPIC		Workshop II-B* Problem Solving		Tour A-1* Public Art: Pilsen & Logan Sq.		Tour B-1* Chicago Architecture		Tour C-1* Newberry Library		Workshop III* Using the AAT		Workshop IV* Using the AAT		Tour D-1* Art Galleries		Tour E-1* Harold Washington Library	
7:00 p.m.	ARLIS/NA Executive Board Meeting		Standards Committee Business Meeting (Staffing)		Workshop I-A* OCLC/EPIC		Workshop II-A* Managing Change		Workshop I-B* OCLC/EPIC		Workshop II-B* Problem Solving		Tour A-1* Public Art: Pilsen & Logan Sq.		Tour B-1* Chicago Architecture		Tour C-1* Newberry Library		Workshop III* Using the AAT		Workshop IV* Using the AAT		Tour D-1* Art Galleries		Tour E-1* Harold Washington Library	
8:00 p.m.	ARLIS/NA Executive Board Meeting		Standards Committee Business Meeting (Staffing)		Workshop I-A* OCLC/EPIC		Workshop II-A* Managing Change		Workshop I-B* OCLC/EPIC		Workshop II-B* Problem Solving		Tour A-1* Public Art: Pilsen & Logan Sq.		Tour B-1* Chicago Architecture		Tour C-1* Newberry Library		Workshop III* Using the AAT		Workshop IV* Using the AAT		Tour D-1* Art Galleries		Tour E-1* Harold Washington Library	
9:00 p.m.	ARLIS/NA Executive Board Meeting		Standards Committee Business Meeting (Staffing)		Workshop I-A* OCLC/EPIC		Workshop II-A* Managing Change		Workshop I-B* OCLC/EPIC		Workshop II-B* Problem Solving		Tour A-1* Public Art: Pilsen & Logan Sq.		Tour B-1* Chicago Architecture		Tour C-1* Newberry Library		Workshop III* Using the AAT		Workshop IV* Using the AAT		Tour D-1* Art Galleries		Tour E-1* Harold Washington Library	
10:00 p.m.	ARLIS/NA Executive Board Meeting		Standards Committee Business Meeting (Staffing)		Workshop I-A* OCLC/EPIC		Workshop II-A* Managing Change		Workshop I-B* OCLC/EPIC		Workshop II-B* Problem Solving		Tour A-1* Public Art: Pilsen & Logan Sq.		Tour B-1* Chicago Architecture		Tour C-1* Newberry Library		Workshop III* Using the AAT		Workshop IV* Using the AAT		Tour D-1* Art Galleries		Tour E-1* Harold Washington Library	
11:00 p.m.	ARLIS/NA Executive Board Meeting		Standards Committee Business Meeting (Staffing)		Workshop I-A* OCLC/EPIC		Workshop II-A* Managing Change		Workshop I-B* OCLC/EPIC		Workshop II-B* Problem Solving		Tour A-1* Public Art: Pilsen & Logan Sq.		Tour B-1* Chicago Architecture		Tour C-1* Newberry Library		Workshop III* Using the AAT		Workshop IV* Using the AAT		Tour D-1* Art Galleries		Tour E-1* Harold Washington Library	
12 Midnight	ARLIS/NA Executive Board Meeting		Standards Committee Business Meeting (Staffing)		Workshop I-A* OCLC/EPIC		Workshop II-A* Managing Change		Workshop I-B* OCLC/EPIC		Workshop II-B* Problem Solving		Tour A-1* Public Art: Pilsen & Logan Sq.		Tour B-1* Chicago Architecture		Tour C-1* Newberry Library		Workshop III* Using the AAT		Workshop IV* Using the AAT		Tour D-1* Art Galleries		Tour E-1* Harold Washington Library	

* PREREGISTRATION REQUIRED

SATURDAY, FEBRUARY 8

ARLIS/NA CONFERENCE PROGRAM

7:30 a.m.-8:00 p.m.

THIRD FLOOR LOBBY

REGISTRATION AND INFORMATION DESK

8:00 a.m.-3:00 p.m.

MCCORMICK ROOM

ARLIS/NA EXECUTIVE BOARD MEETING

(Open to membership on a seating-available basis)

PULLMAN BOARDROOM

STANDARDS COMMITTEE MEETING

(Open to committee members only)

TOURS AND WORKSHOPS

Preregistration and payment of a fee is required for all tours and workshops.

8:00 a.m.-11:00 a.m.

DEPAUL UNIVERSITY, LOOP CAMPUS, COMPUTER LAB 243 S. WABASH

WORKSHOP I-A
USE OF OCLC'S EPIC SERVICE AS AN ART REFERENCE TOOL

SPONSOR

Computer Section

COORDINATOR

Fred Hillbruner, Assistant Director/Head of Technical Services, Flaxman Library, School of the Art Institute of Chicago

PRESENTOR

Anne Craig, ILLINET

[Computer facilities for the workshop generously provided by DePaul University, Loop Campus]

JOLIET ROOM

WORKSHOP II-A
MANAGING CHANGE

SPONSOR

Professional Development Committee

COORDINATOR

Kathryn Deiss, Head of Interlibrary Loan, Northwestern University Library

FACILITATOR

Maureen Sullivan, Consultant, Association of Research Libraries, Office of Management Services (ARL/OMS) & Maureen Sullivan Associates

8:00 a.m.-12:00 Noon

TOUR A-1
PUBLIC ART: PILSEN AND LOGAN SQUARE

Meet in South Lobby by the 8th Street Entrance at 7:45 a.m.

SATURDAY,
FEBRUARY 8

ARLIS/NA CONFERENCE PROGRAM



9:00 a.m.-12:00 Noon

**TOUR B-1
CHICAGO ARCHITECTURE HIGHLIGHTS
BY BUS**

Meet in South Lobby by the 8th Street Entrance at 7:45 a.m.

**TOUR C
NEWBERRY LIBRARY**

Meet in South Lobby by the 8th Street Entrance at 8:45 a.m.

8:00 a.m.-3:00 p.m.

PRIVATE DINING ROOM 2

**WORKSHOP III
USING THE AAT: PRACTICAL APPLICATIONS**

SPONSOR

AAT Advisory Committee

MODERATOR

Toni Petersen, Director, AAT

SPEAKERS

Susanne Warren, User Services Coordinator, AAT
Carol Jackman-Schuller, Curator, Visual Resources, Art History
Department, McGill University
Judy Silverman, Librarian, Centre Canadien d'Architecture
/Canadian Centre for Architecture
Alfred Willis, Librarian, Architecture Library, Kent State
University
Maryly Snow, Librarian, Architecture Slide Library, University
of California, Berkeley

[Workstations for this workshop have been generously provided by IBM]

MARQUETTE ROOM

**WORKSHOP IV
ADDRESSING THE DIFFERENT STAGES OF
A BUILDING PROJECT**

SPONSOR

Space Planners Round Table

COORDINATOR

Sonja Staum-Kuniej, Museum Librarian, Museum of
Contemporary Art, Chicago

PRESENTORS

Design Team from V.O.A. (Chicago, Illinois)

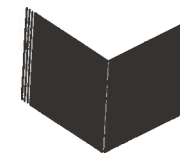
9:30 a.m.-2:30 p.m.

**TOUR D-1
ART GALLERIES: RIVER NORTH AND
RIVER WEST**

Meet in South Lobby by the 8th Street Entrance at 9:15 a.m.

SATURDAY,
FEBRUARY 8

ARLIS/NA CONFERENCE PROGRAM



10:00 a.m.-12:00 Noon

**TOUR E-1
HAROLD WASHINGTON LIBRARY CENTER**

Meet in South Lobby by the 8th Street Entrance at 9:45 a.m.

12:00 Noon-3:00 p.m.

DEPAUL UNIVERSITY, LOOP
CAMPUS, COMPUTER LAB
343 S. WABASH

**WORKSHOP I-B
USE OF OCLC'S EPIC SERVICE AS AN ART
REFERENCE TOOL**

SPONSOR

Computer Section

COORDINATOR

Fred Hillbruner, Assistant Director / Head of Technical Services,
Flaxman Library, School of the Art Institute of Chicago

PRESENTOR

Anne Craig, ILLINET

*[Computer facilities for the workshop generously provided by DePaul
University, Loop Campus]*

12:00 Noon-3:00 p.m.

JOLIET ROOM

**WORKSHOP II-B
PROBLEM SOLVING**

SPONSOR

Professional Development Committee

COORDINATOR

Kathryn Deiss, Head of Interlibrary Loan, Northwestern
University Library

FACILITATOR

Maureen Sullivan, Consultant, Association of Research Libraries,
Office of Management (ARL/OMS) & Maureen Sullivan
Associates

1:00 p.m.-5:00 p.m.

**TOUR A-2
PUBLIC ART: HYDE PARK AND PULLMAN**

Meet in South Lobby by the 8th Street Entrance at 12:45 p.m.

**TOUR B-2
CHICAGO ARCHITECTURE HIGHLIGHTS
BY BUS**

Meet in South Lobby by the 8th Street Entrance at 12:45 p.m.

**TOUR F-1
GREAT RESTORATIONS**

Meet in South Lobby by the 8th Street Entrance at 12:45 p.m.

2:00 p.m.-3:00 p.m.

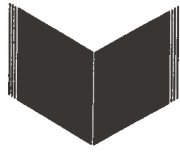
CONFERENCE ROOM 4A

NEW COMMITTEE CHAIR ORIENTATION

SATURDAY,
FEBRUARY 8



ARLIS/NA CONFERENCE PROGRAM



7:00 p.m.-8:00 p.m.

PRIVATE DINING ROOM 3

SPONSOR

LECTURE
PERCENT FOR PUBLIC ART

ARLIS/Midstates

8:00 p.m.-9:00 p.m.

PRIVATE DINING ROOM 2

SPONSOR

LECTURE
CHICAGO ART SCENE

ARLIS/Midstates

SPEAKER

Dennis Adrian, Art Critic and Teacher

8:00 p.m.-9:30 p.m.

RANDOLPH STREET GALLERY
754 N. MILWAUKEE AVENUE

PERFORMANCE
SPACE AND TIME, PART I: AN EVENING OF
PERFORMANCE ART

Art and Design School Library Division

Film and Video Round Table

New Art Round Table

SPONSOR

MODERATOR

Hikmet Doğu, Reader Services Librarian, Thomas J. Watson
Library, Metropolitan Museum of Art, New York

PERFORMER

Larry Steger, Solo Performance Artist
Kija Overstreet, Solo Performance Artist
Suzie Silver, Video/Performance Artist

DOCUMENTER

9:00 p.m.-11:00 p.m.

MARQUETTE ROOM

SPONSOR

INDIANA REUNION

Betty Jo Irvine, Fine Arts Librarian, Indiana University,
Bloomington

*(Open to all former and present students and employees of Indiana
institutions. Cash bar will be available)*

9:00 p.m.-12:00 Midnight

HOSPITALITY SUITE

SATURDAY,
FEBRUARY 8



ARLIS/NA CONFERENCE PROGRAM



3:00 p.m.-4:30 p.m.

CONFERENCE ROOM 4K

CONFERENCE ROOM 4B

CONFERENCE ROOM 4E

CONFERENCE ROOM 4F

CONFERENCE ROOM 4G

CONFERENCE ROOM 4H

CONFERENCE ROOM 4I

CONFERENCE ROOM 4J

COMMITTEE BUSINESS MEETINGS

Art & Architecture Thesaurus Advisory

Art Documentation/ARLIS/NA Update Advisory Board

Gerd Muehsam Award

Membership

✓ Nominating

Professional Development (Meeting #1)

Standards

Travel Award

3:00 p.m.-5:00 p.m.

TOUR E-2
HAROLD WASHINGTON LIBRARY CENTER

Meet in South Lobby by the 8th Street Entrance at 2:45 p.m.

4:45 p.m.-6:15 p.m.

CONFERENCE ROOM 4J

CONFERENCE ROOM 4B

CONFERENCE ROOM 4E

CONFERENCE ROOM 4F

CONFERENCE ROOM 4G

CONFERENCE ROOM 4H

CONFERENCE ROOM I

COMMITTEE BUSINESS MEETINGS

Cultural Diversity

Development

George Wittenborn Award

International Relations

North American Art Library Resources

Publications

Research

4:45 p.m.-6:15 p.m.

CONFERENCE ROOM 4K

ORIENTATION TO ARLIS/NA FOR NEW
MEMBERS & FIRST-TIME ATTENDEES

6:15 p.m.-8:00 p.m.

DINNER WITH THE ARLIS/NA EXECUTIVE
BOARD, NEW MEMBERS, AND FIRST-TIME
ATTENDEES

*Meet in Conference Room 4K at 6:15 p.m.
(Dutch Treat dinner open to all members)*

SUNDAY, FEBRUARY 9, 1992
DAY-AT-A-GLANCE

7:00 a.m.				
8:00 a.m.				
9:00 a.m.	Registration & Information	SESSION 1 Design Competitions	SESSION 2 Automation & Art Librarianship	SESSION 3 Art in Context Videothèque
10:00 a.m.		Brunch & Gallery Talk		
11:00 a.m.	SECTION BUSINESS MEETINGS			
12:00 Noon				
1:00 p.m.				
2:00 p.m.	SESSION 4 20th Anniversary Round Table	SESSION 5 Margin for Error	SESSION 6 Collecting Popular Culture	Design Wars
3:00 p.m.				
4:00 p.m.				
5:00 p.m.				
6:00 p.m.	CONVOCATION AND RECEPTION* Chicago Art Institute			
7:00 p.m.				
8:00 p.m.				
9:00 p.m.				
10:00 p.m.	Hospitality Suite	Serials Swap	Slide Swap #1	
11:00 p.m.				
12 Midnight				

* PREREGISTRATION REQUIRED

SUNDAY,
FEBRUARY 9

ARLIS/NA CONFERENCE PROGRAM

Breakfast - P. Barnett

9:00 a.m.-6:00 p.m.

REGISTRATION AND INFORMATION DESK

THIRD FLOOR LOBBY

9:00 a.m.-11:00 a.m.

SESSION 1
DESIGN COMPETITIONS: THE PERFECT SOLUTION?

MARQUETTE ROOM

SPONSOR

ARLIS/Midstates

MODERATOR

Mary Woolever, Architecture Archivist, Ryerson and Burnham Libraries, Art Institute of Chicago

SPEAKERS

Bernard Babka, Partner, Hammond Beeby and Babka, Inc., Architects

Kevin Campbell, Deputy Project Director, Harold Washington Library Center

Ted A. Peterson, Senior Vice President of Development, U. S. Equities Reality, Inc.

Charles Thurow, First Deputy Commissioner, City of Chicago, Department of Planning

David Van Zanten, Professor, Northwestern University

Cynthia Weese, Partner, Weese Langley Weese Architects

Donald Wright, Director, Evanston Public Library

SUNDAY,
FEBRUARY 9



ARLIS/NA CONFERENCE PROGRAM



9:00 a.m.-11:00 a.m.

WALDORF ROOM

**SESSION 2
AUTOMATION AND ART LIBRARIANSHIP:
FROM EDUCATION TO CONTINUING
EDUCATION**

CO-SPONSORS

Computer Section
Professional Development Committee

CO-MODERATORS

Max Marmor, Reference and Collection Development Librarian,
Institute of Fine Arts, New York
Deborah Kempe, Indexer/Reference Librarian, Avery Library,
Columbia University

SPEAKERS

Howard Besser, Assistant Professor, School of Library and
Information Science, University of Pittsburgh
*Emerging Technologies and the Education of Art Librarians and
Visual Resources Professionals*
Deirdre Stam, Associate Professor, School of Library and
Information Science, Catholic University
*Emerging Technologies and Continuing Education for Art
Librarians*
Trudy Buxton Jacoby, Slide Curator, Austin Arts Center, Trinity
College
*Emerging Technologies and Continuing Education for Visual
Resources Professionals*
Roger C. Palmer, Manager of Technical Development, Getty Art
History Information Program
Automation in the Arts: Coordinating the Experts

9:00 a.m.-3:00 p.m.

PRIVATE DINING ROOM 5

SPONSOR

Indigenous Art and Culture Round Table

MODERATOR

Judith Herschman, Librarian, Fowler Museum of Cultural
History, University of California, Los Angeles

10:00 a.m.-12:00 Noon

MUSEUM OF CONTEMPORARY ART
237 E. ONTARIO

SPONSOR

BRUNCH AND GALLERY TALK

Museum of Contemporary Art
(Preregistration required)

SUNDAY,
FEBRUARY 9



ARLIS/NA CONFERENCE PROGRAM



12:15 p.m.-1:45 p.m.

BOULEVARD ROOM

MARQUETTE ROOM

WALDORF ROOM

SECTION BUSINESS MEETINGS

Architecture
Computer
Reference and Information Services

2:00 p.m.-4:00 p.m.

BOULEVARD ROOM

**SESSION 4
TWENTIETH ANNIVERSARY ROUND TABLE
ON ARLIS/NA: OUR PROFESSION AND ITS
CHANGES**

SPONSOR

ARLIS/NA

MODERATOR

Merrill Smith, ARLIS/NA President, Associate Rotch Librarian,
Rotch Library, Massachusetts Institute of Technology

SPEAKERS

Sherman Clarke, Assistant Librarian/Cataloger, Amon Carter
Museum Library
Wolfgang M. Freitag, Lecturer, Art Librarianship, Graduate
School of Library and Information Science, Simmons College
Katharine Martinez, Director, Winterthur Library, Winterthur
Museum
William B. Walker, Chief Librarian, Thomas J. Watson Library,
Metropolitan Museum of Art, New York
Mary Williamson, Fine Arts Bibliographer, Scott Library, York
University

MARQUETTE ROOM

**SESSION 5
MARGIN FOR ERROR: LIBRARIES,
TECHNOLOGY, AND THE LAW**

CO-SPONSORS

Computer Section
Public Library Division

MODERATOR

Valerie Pinkney, Art Librarian, Dallas Public Library

SPEAKERS

Arthur Fakes, Attorney at Law
William T. McGrath, Partner, Davis, Mannix & McGrath
Craig Weinlein, Attorney, Carrington, Coleman, Sloman &
Blumenthal

SUNDAY,
FEBRUARY 9

ARLIS/NA CONFERENCE PROGRAM



2:00 p.m.-4:00 p.m.

WALDC:F ROOM

SESSION 6
LOOKING HIGH & LOW: COLLECTING
POPULAR CULTURE

CO-SPONSORS

ARLIS/Michigan and ARLIS/Ohio

CO-MODERATORS

Jane Carlin, Chair: ARLIS/Ohio; Librarian for the College of Design,
Architecture, Art and Planning, University of Cincinnati

Janice Simpson, Chair: ARLIS/Michigan; Curator, Visual
Resources Library, Michigan State University

SPEAKERS

Peter Berg, Head, Special Collections, Michigan State University
Libraries

*Forming a Collection Development Policy for a Popular Culture
Collection in a University Research Library*

Lucy Shelton Caswell, Curator, Cartoon, Graphic and
Photographic Arts Research Library, Ohio State University

Cartoon Art and the Scholar

Nena Couch, Curator, Theatre Research Institute, Ohio State
University Library

Theatre: A Manifestation of Popular Culture

Brenda McCallum, Head Librarian, Popular Culture Library,
Bowling Green State University

*Popular Culture: Teaching, Research, and the Library Collections at
Bowling Green State University*

Randall Scott, Comic Art Bibliographer, Michigan State
University

*Not in Stone: Flexible Cataloging of a Major Popular Culture
Resource*

SUNDAY,
FEBRUARY 9

ARLIS/NA CONFERENCE PROGRAM



3:00 p.m.-5:00 p.m.

PRIVATE DINING ROOM 5

VIDEO FOLLOW-UP

Nova: Design Wars

4:15 p.m.-5:45 p.m.

PRIVATE DINING ROOM 2

CONFERENCE ROOM 4M

ASTORIA ROOM

PRIVATE DINING ROOM 3

JOLIET ROOM

DIVISION BUSINESS MEETINGS

Academic Library

Art and Design School Library

Museum Library

Public Library

Visual Resources

6:30 p.m.-9:30 p.m.

CONVOCATION AND RECEPTION

Rubloff Auditorium, Art Institute of Chicago, Columbus Drive
Entrance

*Bus shuttle service from the hotel begins at 6:00 p.m. from the 8th Street
Lobby. Return service begins at 8:30 p.m., from the Columbus Drive
Entrance. The LAST bus to return to the hotel will depart at 10:00 p.m.
(Preregistration required)*

SPEAKER

Franz Schulze, Hollender Professor of Art, Lake Forest College

One of the highlighted activities of the convocation reception will
be to assemble and photograph together as many members of
past ARLIS/NA Executive Boards as are on hand. So, a special
invitation is extended to all members of past executive boards to
attend the convocation and to reconvene with fellow board
members.

9:30 p.m.-11:30 p.m.

PRIVATE DINING ROOM 5

SERIALS SWAP

9:30 p.m.-12:00 Midnight

HOSPITALITY SUITE

MONDAY, FEBRUARY 10, 1992
DAY-AT-A-GLANCE

7:00 a.m.
8:00 a.m.
9:00 a.m.
10:00 a.m.
11:00 a.m.
12:00 Noon
1:00 p.m.
2:00 p.m.
3:00 p.m.
4:00 p.m.
5:00 p.m.
6:00 p.m.
7:00 p.m.
8:00 p.m.
9:00 p.m.
10:00 p.m.
11:00 p.m.
12 Midnight

Registration & Information	EXHIBITS OPENER* Continental Breakfast				COMMITTEE MEETING: Professional Development #2
	Exhibits	SESSION 7: Video Doc. & Preservation	SESSION 8: Collection Dev. for Architecture	SESSION 9: Serials in Review	SESSION 10: Indigenous Textiles
	MEMBERSHIP LUNCHEON*				
	MEMBERSHIP MEETING				
	Exhibits	ROUND TABLES New Art, Serials Indigeneous Art	Cataloging Problems	Computer Projects	Ask ARLIS I
		ROUND TABLES Film & Video, Space Planners, Women & Art, Decorative Arts	Cataloging Section		Ask ARLIS II
	ARS LIBRI/20th ANNIVERSARY RECEPTION*				
Hospitality Suite					

* PREREGISTRATION REQUIRED

MONDAY,
FEBRUARY 10

ARLIS/NA CONFERENCE PROGRAM



Breakfast w/ Jeff & Jim 7:00

8:00 a.m.-10:00 a.m.

EXHIBITS OPENING BREAKFAST

WILLIFORD ROOMS A-C

(Preregistration required)

PRIVATE DINING ROOM 3

COMMITTEE BUSINESS MEETING

Professional Development (Meeting #2)

9:00 a.m.-6:00 p.m.

REGISTRATION AND INFORMATION DESK

THIRD FLOOR LOBBY

10:00 a.m.-12:30 p.m.

EXHIBITS OPEN

WILLIFORD ROOMS A-C
PRIVATE DINING ROOM 1

10:00 a.m.-12:00 Noon

SESSION 7
SPACE AND TIME, PART II: VIDEO
DOCUMENTATION AND PRESERVATION

BOULEVARD ROOM A

CO-SPONSORS

Art and Design School Library Division
Film and Video Round Table
New Art Round Table

MODERATOR

Hikmet Doğu, Reader Services Librarian, Thomas J. Watson
Library, Metropolitan Museum of Art, New York

SPEAKERS

Madeleine Nichols, Curator, Dance Collection, New York
Public Library

Integrity Issues for the Performer and the Archive

Suzie Silver, Video/Performance Artist

Video Strategies of Performance Art Documentation

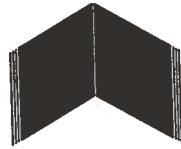
Lou Mallozzi, Visiting Artist, First-Year Program, School of the
Art Institute of Chicago

Introducing First-Year Students to the Time-Based Arts

Larry Steger, Solo Performance Artist

MONDAY,
FEBRUARY 10

ARLIS/NA CONFERENCE PROGRAM



10:00 a.m.-12:00 Noon

PRIVATE DINING ROOM 2

SESSION 8
COLLECTION DEVELOPMENT FOR
ARCHITECTURE: ISSUES IN A CHANGING
ENVIRONMENT

- SPONSOR** Architecture Section
- MODERATOR** Nancy Pistorius, Associate Director, Fine Arts Library, University of New Mexico
- SPEAKERS** Barbara Opar, Head, Bird Library, Fine Arts Department, Syracuse University
Technical Standards: Architecture Reference Collection Development Issues
- Renata Guttman, Library, Centre Canadien d'Architecture/
Canadian Centre for Architecture
A Competitive Collection
- Peggy Ann Kusnerz, Head, Art and Architecture Library,
University of Michigan
Computer Software in the Art and Architecture Library

10:00 a.m.-12:00 Noon

MARQUETTE ROOM

SESSION 9
SERIALS IN REVIEW

- SPONSOR** Serials Round Table
- MODERATOR** Eumie Imm, Assistant Reference/Periodicals Librarian, Museum of Modern Art, New York
- SPEAKERS** Alexandra de Luise, Art Librarian, Queens College
- Ann L. Jones, Serials Librarian, Ryerson and Burnham Libraries,
Art Institute of Chicago
- Alison Pinsler, Script Librarian, Margaret Herrick Library,
Academy of Motion Picture Arts and Sciences
- Rebecca A. Simmons, Assistant Librarian, International Museum
of Photography

MONDAY,
FEBRUARY 10

ARLIS/NA CONFERENCE PROGRAM



10:00 a.m.-12:00 Noon

WALDORF ROOM

SESSION 10
TIME WARP AND WEFT: THE PERSISTENCE
OF INDIGENOUS AND TRADITIONAL
TEXTILES

- CO-SPONSORS** Decorative Arts Round Table
Indigenous Art and Culture Round Table
- MODERATOR** Amy Navratil Ciccone, Head Librarian, Architecture and Fine Arts Library, University of Southern California
- SPEAKERS** Nina Stephenson, Reference Librarian, University of New Mexico, Albuquerque
The Past and Present of Javanese Batik: A Visual and Bibliographic Overview
- Halina R. Rusak, Art Librarian, Rutgers University, New Brunswick
The Slutsak Belt as an Art Object
- Marjorie Miller, Reference Librarian, Fashion Institute of Technology, New York
The Centrality of the Indigenous Idiom in the Clothing of Issey Miyake
- Anna Kolata, Textile Conservator, Chicago, Illinois
Textile and Costume Conservation in the Laboratory: The New Facility at the Chicago Historical Society

12:00 Noon-2:00 p.m.

GRAND BALLROOM

MEMBERSHIP LUNCHEON

- (Preregistration required)
- SPEAKER** Richard Hunt, Sculptor

2:00 p.m.-4:00 p.m.

GRAND BALLROOM

MEMBERSHIP MEETING

MONDAY,
FEBRUARY 10

ARLIS/NA CONFERENCE PROGRAM



4:00 p.m.-6:00 p.m.

EXHIBITS OPEN

WILLIFORD ROOMS A-C
PRIVATE DINING ROOM 1

4:15 p.m.-5:45 p.m.

ROUND TABLE BUSINESS MEETINGS

CONFERENCE ROOM 4E
CONFERENCE ROOM 4F
CONFERENCE ROOM 4G

Indigenous Art and Culture
New Art
Serials

4:15 p.m.-5:45 p.m.

✓ CATALOGING PROBLEMS DISCUSSION GROUP

BOULEVARD ROOM A

SPONSOR Cataloging Section
MODERATOR Sherman Clarke, Assistant Librarian/Cataloger, Amon Carter Museum

MARQUETTE ROOM

ASK ARLIS I
ON THE JOB TRAINING FOR A CAREER
IN VISUAL RESOURCES AND ART
LIBRARIANSHIP

SPONSOR Professional Development Committee
MODERATOR Jack Robertson, Fine Arts Librarian, Kimball Fine Arts Library,
University of Virginia
PARTICIPANTS Stephanie Sigala, Head Librarian, Saint Louis Art Museum
Adina Lerner, Curator, Slide and Photograph Collection,
University of California, Riverside
Loren Lerner, Head, Media Centre/Visual Arts Bibliographer,
Concordia University

MONDAY,
FEBRUARY 10

ARLIS/NA CONFERENCE PROGRAM



4:14 p.m.-5:45 p.m.

COMPUTER PROJECTS

PRIVATE DINING ROOM 2

PROJECT Interactive Videodisc Project
DEMONSTRATOR Louise Bloomberg, Curator of Visual Collections, Art History
Department, University of Massachusetts
PROJECT Joan Flasch Artists' Book Database
DEMONSTRATOR Fred Hillbruner, Assistant Director/Head of Technical Services,
Flaxman Library, School of the Art Institute of Chicago
PROJECT Iconclass Browser
DEMONSTRATOR Peter van Huisstede, Iconclass Research and Development
Group, Department of Computers and Humanities, University
of Utrecht

6:00 p.m.-7:15 p.m.

ROUND TABLE BUSINESS MEETINGS

CONFERENCE ROOM 4E
CONFERENCE ROOM 4G
CONFERENCE ROOM 4F
CONFERENCE ROOM 4H

Decorative Arts
Film and Video
Space Planners
Women and Art

WALDORF ROOM

SECTION BUSINESS MEETING

✓ Cataloging

MONDAY,
FEBRUARY 10



6:00 p.m.-7:15 p.m.

MARQUETTE ROOM

SPONSOR International Relations Committee
MODERATOR Katharine A. Keller, Indexer/Reference Librarian, Avery Index to Periodicals, Avery Library, Columbia University
PARTICIPANTS Clive Phillpot, Director, Library, Museum of Modern Art, New York
James Findlay, Head Librarian, Wolfsonian Foundation
Mary Ashe, Head, Art and Music Department, San Francisco Public Library
Irena Murray, Head, Blackader-Lauterman Library, McGill University
Wolfgang M. Freitag, Lecturer, Art Librarianship, Graduate School of Library and Information Science, Simmons College
Stephen Bloom, Director of Libraries, University of the Arts, Philadelphia
Winberta Yao, Art Reference Librarian, Arizona State University
Darlene Tong, Art Librarian, San Francisco State University
Sheila Klos, Head, Architecture and Allied Arts Library, University of Oregon
Elsa Barberena, Chief Librarian, Universidad Nacional Autónoma de México

7:00 p.m.-10:00 p.m.

SHEDD AQUARIUM

**ARS LIBRI RECEPTION:
TWENTIETH ANNIVERSARY CELEBRATION
AND FUNDRAISER**

In Honor of the Twentieth Anniversary of ARLIS/NA
Shuttle Bus service from the hotel will begin at 6:30 p.m. from the 8th Street Lobby. Return shuttle service to the hotel begins at 9:00 p.m. from the Shedd Aquarium entrance. The LAST bus to return to the hotel will depart at 10:00 p.m.
(Preregistration required)

10:00 p.m.-12:00 Midnight

HOSPITALITY SUITE

ARLIS/NA CONFERENCE PROGRAM



TUESDAY,
FEBRUARY 11



8:00 a.m.-10:00 a.m.

JOLIET ROOM

ASTORIA ROOM

SPONSOR AAT
COORDINATOR Toni Petersen, Director, Art and Architecture Thesaurus

PRIVATE DINING ROOM 3

SPONSORS Academic Library Division Subcommittee on Reference Publishing
Reference and Information Services Section
COORDINATOR Max Marmor, Reference/Collection Development Librarian,
Institute of Fine Arts, New York

8:30 a.m.-12:30 p.m.

WILLIFORD ROOMS A-C
PRIVATE DINING ROOM 1

9:00 a.m.-6:00 p.m.

THIRD FLOOR LOBBY

10:00 a.m.-12 Noon

WALDORF ROOM

SPONSOR Academic Library Division
MODERATOR Lee Sorensen, Head of Reference, Lilly Art Library, Duke University
SPEAKERS John Lubans, Jr., Deputy University Librarian, Duke University

ARLIS/NA CONFERENCE PROGRAM



CHAPTER OFFICERS BREAKFAST

Executive Board and Chapter Officers
(Preregistration required)

**ART AND ARCHITECTURE THESAURUS USERS
GROUP MEETING**

SPONSOR AAT
COORDINATOR Toni Petersen, Director, Art and Architecture Thesaurus

REFERENCE PUBLISHING DISCUSSION GROUP

Academic Library Division Subcommittee on Reference Publishing
Reference and Information Services Section
Max Marmor, Reference/Collection Development Librarian,
Institute of Fine Arts, New York

EXHIBITS OPEN

REGISTRATION AND INFORMATION DESK

**SESSION 11
COPING WITH CUTS: MANAGING WITH LESS
IN THE '90s**

SPONSOR Academic Library Division
MODERATOR Lee Sorensen, Head of Reference, Lilly Art Library, Duke University
SPEAKERS John Lubans, Jr., Deputy University Librarian, Duke University
Sweet Are the Uses of Adversity, or I Can't Afford to Half My Half Again
Susan Curzon, Director, Glendale Public Library
Managing with Less
Janine Henri, Art Librarian, Fine Arts Library, University of Texas, Austin
Initiating User Fees for the University of Texas at Austin Art History Slide Collection

TUESDAY, FEBRUARY 11, 1992
DAY-AT-A-GLANCE

7:00 a.m.
8:00 a.m.
9:00 a.m.
10:00 a.m.
11:00 a.m.
12:00 Noon
1:00 p.m.
2:00 p.m.
3:00 p.m.
4:00 p.m.
5:00 p.m.
6:00 p.m.
7:00 p.m.
8:00 p.m.
9:00 p.m.
10:00 p.m.
11:00 p.m.
12 Midnight

Registration & Information						
Exhibits	CHAPTER OFFICERS BREAKFAST *		Reference Publishing Discussion Group	AAT Users Group		
	SESSION 11 Coping with Cuts		SESSION 12 Sexual Perversity in Chicago		SESSION 13 Native American Documentation	
	TOUR E-3 * Washington Library	Newsletter Editors	VRMS Users Group	Canadian Members	Cataloging Advisory Committee	
Exhibits	SESSION 14 Artists' Books	SESSION 15 African Art	Strategic Plan	SESSION 16 Optical Imaging ABCs		
	VR Automation	Ask ARLIS III			1992-93 Moderators	
TOUR: Flaxman Library	VR Task Force		ART DOC & UPDATE Contributors	Architectural Drawings	Ask ARLIS IV	
Slide Swap #2	"Chicago Architecture"					
Hospitality Suite						

* PREREGISTRATION REQUIRED

TUESDAY,
FEBRUARY 11

ARLIS/NA CONFERENCE PROGRAM

10:00 a.m.-12:00 Noon

MARQUETTE ROOM

SESSION 12

**SEXUAL PERVERSITY IN CHICAGO:
RESEARCHING THE IMPACT OF ARTISTS'
SEXUALITY ON THEIR WORK**

SPONSOR

Women and Art Round Table

MODERATOR

Edith Crowe, Librarian, Robert D. Clark Library, San Jose State University

SPEAKERS

Whitney Davis, Professor, Art History, Northwestern University

Founding the Closet: Sexuality and the Creation of Art History

Nancy McCauley, Slide Curator, Stanford University

No Sexual Perversion in (Judy) Chicago

Daniel Myer, People for the American Way

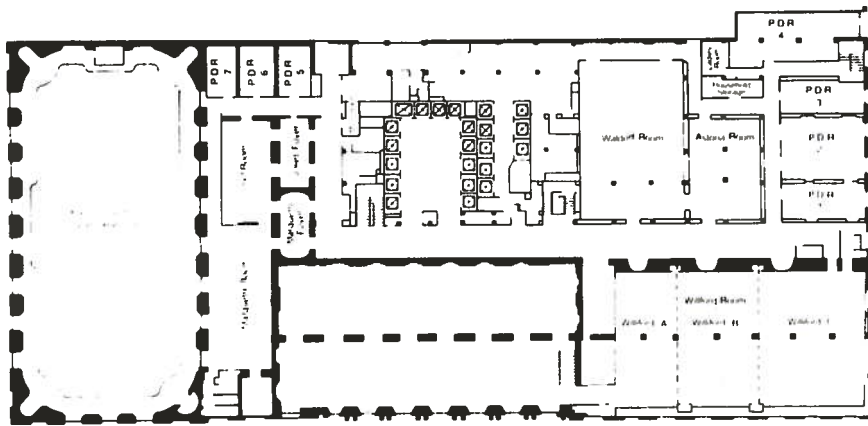
The ARTSAVE Project: Censorship in the Arts

Jim Van Buskirk, Librarian, San Francisco Public Library

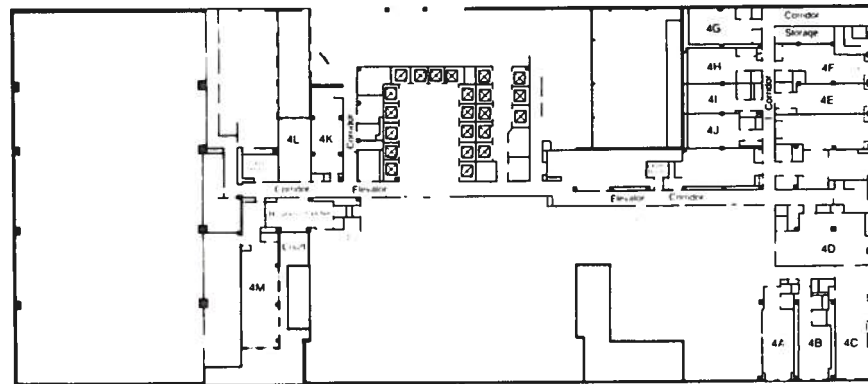
Between the Lines: The Often Fruitless Quest for Gay and Lesbian Materials

Marilyn Wyman, Department of Art and Design, San Jose State University

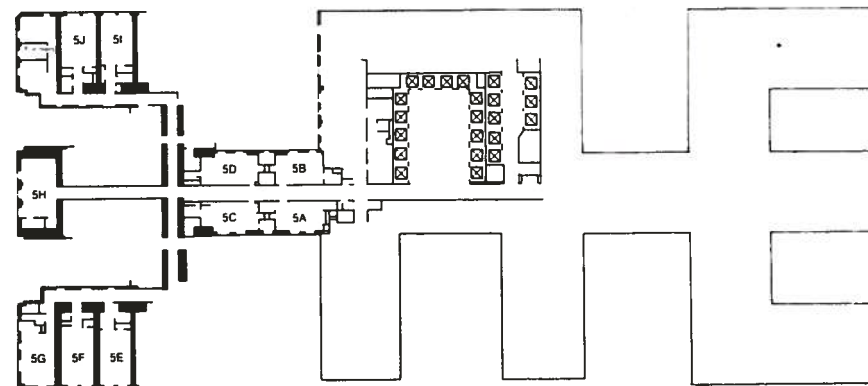
Now We Find, Soon We Won't: Materials and Access in Teaching and Research



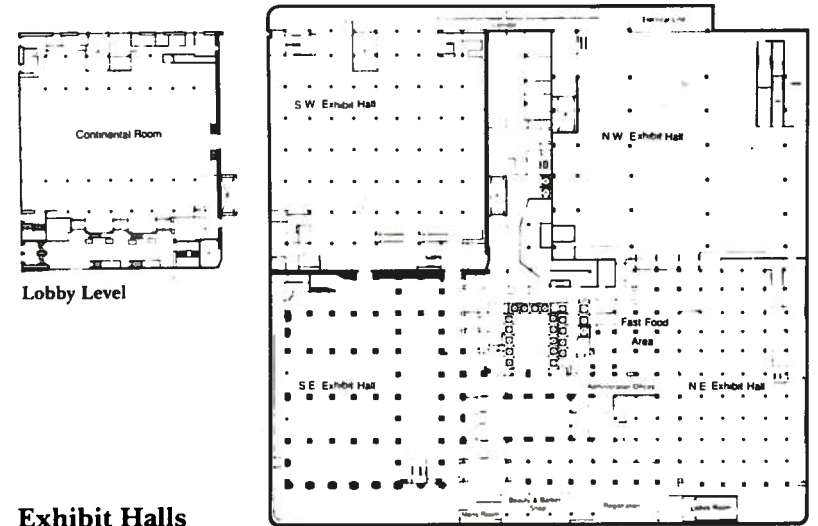
3rd Floor



4th Floor



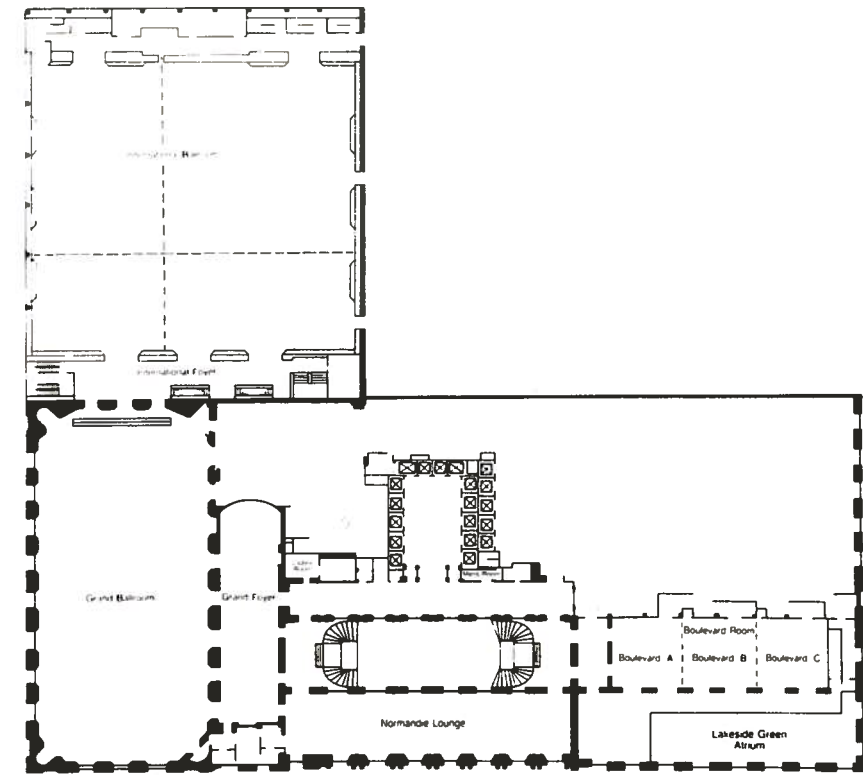
5th Floor



Lobby Level

Exhibit Halls

Lower Level



2nd Floor

TUESDAY,
FEBRUARY 11



ARLIS/NA CONFERENCE PROGRAM



10:00 a.m.-12:00 Noon

PRIVATE DINING ROOM 2

- SESSION 13**
NATIVE AMERICAN DOCUMENTATION IN NORTH AMERICA: AN OVERVIEW
- SPONSOR** Indigenous Art and Culture Round Table
- MODERATOR** Deirdre Lawrence, Principal Librarian, Libraries, Brooklyn Museum
- SPEAKERS** Lee Davis, Director of the California Indian Project, Robert H. Lowie Museum of Anthropology, University of California, Berkeley
The California Indian Library Collecting Program
- Mary Davis, Librarian, Huntington Free Library/Museum of the American Indian
Through Native Eyes: American Indians Write About Their Work
- Deirdre Lawrence
Stories from the Field: Stewart Culin Collection Among the North American Indians, 1903-1911
- Lottsie Patterson, Librarian, University of Oklahoma
Victor Lieberman, Reference Librarian, Newberry Library

12:00 Noon-2:00 p.m

TOUR E-3
HAROLD WASHINGTON LIBRARY CENTER

Meet in South Lobby at the 8th Street Entrance at 11:45 a.m.

12:15 p.m.-1:45 p.m.

CONFERENCE ROOM 4C
CONFERENCE ROOM 4D
CONFERENCE ROOM 4K
CONFERENCE ROOM 4M

MEETINGS

Canadian Members
Cataloging Advisory Committee
Chapter Newsletter Editors
VRMS Users

TUESDAY,
FEBRUARY 11



ARLIS/NA CONFERENCE PROGRAM



2:00 p.m.-4:00 p.m.

JOLIET ROOM

- SESSION 14**
CHOPSTICKS, TOILET PAPER, AND OTHER ODD THINGS: A HOLISTIC APPROACH TO ARTISTS' BOOK COLLECTIONS IN AN INSTRUCTIONAL SETTING
- SPONSOR** Art and Design School Library Division
- MODERATOR** Nadene Byrne, Director, Flaxman Library, School of the Art Institute of Chicago
- SPEAKERS** Fred Hillbruner, Assistant Director/Head of Technical Services, Flaxman Library, School of the Art Institute of Chicago
Linking Images and Related Print Resources to the Artists' Book Database of the Flaxman Library: A Project in Process
- Catherine Ruggie Saunders, Visiting Designer, Visual Communication, School of the Art Institute of Chicago
Book Arts in the Typography Shop: The Use of Artists' Books in an Instructional Setting
- Sally Alatalo, Curator, Joan Flasch Artists' Book Collection, School of the Art Institute of Chicago
The Selection, Storage and Use of Realia in Artists' Book Collections
- Cristine C. Rom, Library Director, Cleveland Institute of Art
Books: the Ultimate Design Challenge

TUESDAY,
FEBRUARY 11

ARLIS/NA CONFERENCE PROGRAM



2:00 p.m.-4:00 p.m.

WALDORF ROOM

SESSION 15
AFRICAN ART: WHAT DO WE NEED TO BE THINKING?

- SPONSOR** Visual Resources Division
- MODERATOR** Janice Simpson, Curator, Visual Resources Library, Department of Art, Michigan State University
- SPEAKERS** Julie Hausman, Curator of Visual Materials, School of Art and Art History, University of Iowa
Problems of a Nonspecialist in African Art—One Slide Curator's View
- Christraud M. Geary, Curator, Elliot Elisofon Collection, National Museum of African Art, Smithsonian Institution
Providing Contextual Evidence: Photographs as Documents of African Art and Culture
- Raymond Silverman, Professor, Art History, Michigan State University
Establishing and Sustaining a University-Based African Art Program—The Relationship of Scholar/Teacher, Librarian, and Visual Resources Specialist
- Hans E. Panofsky, Curator of Africana, Emeritus, Northwestern University
Sources on the Visual Arts of Africa

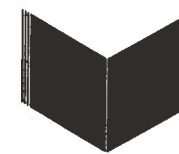
MARQUETTE ROOM

SESSION 16
THE ABCs OF ELECTRONIC VISUAL IMAGING

- CO-MODERATORS** William Keller, Resources Services Librarian, Milton Eisenhower Library, Johns Hopkins University
- Joan Stahl, Coordinator, Image Collections, National Museum of American Art, Smithsonian Institution
- SPEAKERS** Alan B. Newman, Executive Director, Imaging and Technology, Art Institute of Chicago
An Electronic Imaging Primer: Rewards and Pitfalls, Today and Tomorrow
- Howard Besser, Assistant Professor, Library and Information Science, University of Pittsburgh
Storage, Retrieval, and Display of Electronic Visual Media
- Charles Henry, Director of Vassar College Libraries
The Image of the Next Library, Real Challenges, Virtual Opportunities

TUESDAY,
FEBRUARY 11

ARLIS/NA CONFERENCE PROGRAM



2:00 p.m.-5:00 p.m.

WILLIFORD ROOMS A-C
PRIVATE DINING ROOM 1

EXHIBITS OPEN

3:00 p.m.-4:00 p.m.

PRIVATE DINING ROOM 2

SPONSOR
MODERATOR

OPEN FORUM
TOPIC: STRATEGIC PLAN FOR ARLIS/NA

ARLIS/NA Executive Board
Merrill Smith, President, ARLIS/NA, Associate Rotch Librarian, Rotch Library, Massachusetts Institute of Technology

4:15 p.m.-5:45 p.m.

CONFERENCE ROOM 4A
CONFERENCE ROOM 4B

MEETINGS

Visual Resources Automation Discussion Group
1992-1993 Section/Division Moderators

4:15 p.m.-5:45 p.m.

MARQUETTE ROOM

MODERATOR
PARTICIPANTS

ASK ARLIS III
FACILITIES STANDARDS FOR ART LIBRARIES AND VISUAL RESOURCES COLLECTIONS

Betty Jo Irvine, Fine Arts Librarian, Indiana University

Rosann Auchstetter, Assistant Fine Arts Librarian, Indiana University

Yvonne Brown, Head, Art Information Center, Harold Washington Library Center

Amy Navratil Ciccone, Head Librarian, Architecture and Fine Arts Library, University of Southern California

William Dane, Supervisor, Newark Public Library

Daphne Dufresne, Director, Bibliothèque des Arts, Université du Québec à Montréal

Doris Freitag, Book Conservator, Andover-Harvard Theological Library, Harvard University

Sydney Starr Keaveney, Professor, Pratt Institute Library

Sara Jane Pearman, Slide Librarian, Cleveland Museum of Art

6:00 p.m.-7:15 p.m.

CONFERENCE ROOM 4E
CONFERENCE ROOM 4F

MEETINGS

Architectural Drawings Cataloging Problems Discussion Group
Art Documentation/ARLIS/NA Update Editors, Contributors, Book Reviewers, and Potential Contributors

TUESDAY,
FEBRUARY 11

ARLIS/NA CONFERENCE PROGRAM



6:00 p.m.-7:15 p.m.

WALDORF ROOM

**VISUAL RESOURCES DIVISION/VISUAL
RESOURCES ASSOCIATION JOINT TASK
FORCE ON VISUAL RESOURCES
PROFESSIONAL ISSUES**

SPONSOR Visual Resources Division
MODERATOR Kim Kopatz, Curator, Visual Resources Collection, Rush Rhees
Library, University of Rochester

JOLIET ROOM

**ASK ARLIS IV
TRAINING OF PARAPROFESSIONALS AND
SUPPORT STAFF FOR REFERENCE WORK IN
THE ART LIBRARY**

CO-SPONSORS Professional Development Committee
Reference and Information Services Section
MODERATOR Patricia Lynagh, Assistant Librarian, National Museum of
American Art/National Portrait Gallery Library, Smithsonian
Institution
PARTICIPANTS Barbara Reed, Art Librarian, Sherman Art Library, Dartmouth
College
Laurie Whitehill, Readers Services Librarian, Rhode Island
School of Design
Karen L. Meizner, RLIN Search Trainer
Mary Goulding, Director of Reference Services, Suburban
Library System
Margaret Myers, Office for Library Personnel Services, American
Library Association

6:00 p.m.-8:00 p.m.

**TOUR
FLAXMAN LIBRARY, SCHOOL OF THE ART
INSTITUTE OF CHICAGO**

SPONSOR Art and Design School Library Division
MODERATOR Cristine C. Rom, Director, Library, Cleveland Institute of Art
TOUR LEADER Nadene Byrne, Director, Flaxman Library, School of the Art
Institute of Chicago
Meet at the Flaxman Library, Champlain Building, 37 S. Wabash, 6th floor

TUESDAY,
FEBRUARY 11

ARLIS/NA CONFERENCE PROGRAM



8:00 p.m.-9:00 p.m.

PRIVATE DINING ROOM 2

**LECTURE
CHICAGO ARCHITECTURE**

SPONSOR ARLIS/Midstates
SPEAKER Stanley Tigerman, Director, School of Architecture, University of
Illinois at Chicago

PRIVATE DINING ROOM 5

SLIDE SWAP

9:00 p.m.-12:00 Midnight

HOSPITALITY SUITE

WEDNESDAY, FEBRUARY 12, 1992
DAY-AT-A-GLANCE

7:00 a.m.						
8:00 a.m.	Registration & Information	TOUR G* University of Chicago	TOUR K* Racine, WI /Chicago North Shore	TOUR H* FLW & Prairie School	TOUR I* Chicago Historical Society	TOUR J* Merchandise Mart
9:00 a.m.						
10:00 a.m.	SESSION 17 Professional Writing & Publishing					
11:00 a.m.						
12:00 Noon						
1:00 p.m.						
2:00 p.m.					TOUR F-2* Great Restorations	
3:00 p.m.						
4:00 p.m.						
5:00 p.m.						
6:00 p.m.						
7:00 p.m.	ARLIS/NA Executive Board Meeting					
8:00 p.m.						
9:00 p.m.						
10:00 p.m.						
11:00 p.m.						
12 Midnight						

* PRE-REGISTRATION REQUIRED

WEDNESDAY,
FEBRUARY 12

ARLIS/NA CONFERENCE PROGRAM



7:30 a.m.-9:00 a.m.

THIRD FLOOR LOBBY

REGISTRATION AND INFORMATION DESK

8:00 a.m.-4:30 p.m.

**TOUR K
RACINE, WISCONSIN /CHICAGO'S
NORTH SHORE**

Meet in South Lobby at the 8th Street Entrance at 7:45 a.m.

8:00 a.m.-5:30 p.m.

**TOUR G
UNIVERSITY OF CHICAGO AND ENVIRONS**

Meet in South Lobby at the 8th Street Entrance at 7:45 a.m.

8:30 a.m.-12:30 p.m.

**TOUR H
FRANK LLOYD WRIGHT AND THE PRAIRIE
SCHOOL IN OAK PARK**

Meet in South Lobby at the 8th Street Entrance at 8:15 a.m.

**TOUR I
CHICAGO HISTORICAL SOCIETY**

Meet in South Lobby at the 8th Street Entrance at 8:15 a.m.

9:30 a.m.-12:00 Noon

**TOUR J
THE MERCHANDISE MART**

Meet at the Mart's River Front (South) Entrance between Wells and N. Orleans Streets

WEDNESDAY
FEBRUARY 12

ARLIS/NA CONFERENCE PROGRAM

10:00 a.m.-12:00 Noon

FLORENTINE ROOM,
CONGRESS HOTEL

**SESSION 17: ARLIS/NA-VRA JOINT SESSION
PROFESSIONAL WRITING AND PUBLISHING
FOR ART LIBRARY AND VISUAL RESOURCES
PROFESSIONALS**

- CO-SPONSORS** Visual Resources Association
Visual Resources Division
- MODERATOR** Kathryn Vaughn, Slide Librarian, Department of Art, Hobart and
William Smith Colleges
- SPEAKERS** Betty Jo Irvine, Fine Arts Librarian, Indiana University
Passion and Process: Reflections About Writing and Publishing
- Lois Swan Jones, Professor of Art, Department of Art, University
of North Texas
Rolling the Stone Up the Hill: The Long Road to Publication
- Beryl Smith, Assistant Art Librarian, Art Library, Rutgers
University
Developing the Idea
- Christine Sundt, Librarian, Slide and Photograph Collection,
Architecture and Allied Arts Library, University of Oregon
*Guidance From the Trenches: Tips and Tricks for Getting Your
(Visual Resources) Ideas Into Print*
- Joy Blouin, Curator, History of Art, University of Michigan
Publishing and Professional Development

1:00 p.m.-5:00 p.m.

**TOUR F-2
GREAT RESTORATIONS**

Meet in South Lobby at the 8th Street Entrance at 12:45 p.m.

7:00 p.m.-10:00 p.m.

MCCORMICK ROOM

ARLIS/NA EXECUTIVE BOARD MEETING

(Open to membership on a seating-available basis)

THURSDAY,
FEBRUARY 13

ARLIS/NA CONFERENCE PROGRAM

9:00 a.m.-5:00 p.m.

MCCORMICK ROOM

ARLIS/NA EXECUTIVE BOARD MEETING

(Open to membership on a seating-available basis)

FRIDAY
FEBRUARY 14

ARLIS/NA CONFERNECE PROGRAM

12:15 p.m.-1:45 p.m.

MARQUETTE ROOM

**ARLIS/NA-CAA JOINT SESSION
THE AUTOMATED SCHOLAR: THE WHO,
WHAT AND WHY OF CREATING ART
INFORMATION DATABASES**

CO-SPONSORS Art Libraries Society of North America
College Art Association

CO-MODERATORS Virginia Kerr, Doctoral candidate, University of Chicago
Kathryn J. Deiss, Head, Interlibrary Loan, Northwestern
University

SPEAKERS Janice Woo, Doctoral candidate, School of Library and
Information Science, University of California, Berkeley
Electronic Databases: Theory and Practice, Form and Function

Julie Hausman, Curator of Visual Materials, School of Art and
Art History, University of Iowa
*The Stanley Collection Videodisc and ION: A Model for
Collaboration*

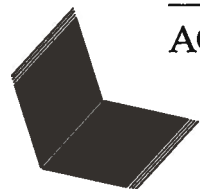
Kenneth M. Craig, Associate Professor, Boston College
*Using Hypertext in Teaching Northern Renaissance Art: Some
Problems and Issues*

Carrie Rebor, Assistant Curator, American Painting and
Sculpture, Metropolitan Museum of Art, New York
*Becoming AWARE: The American Wing Art REsearch System at
the Metropolitan Museum of Art*

ACRONYMS AND TERMS

The following list is a brief listing of possible acronyms and terms that may be used by speakers during the conference.

AACR2	Anglo American Cataloging Rules, Second Edition
AAM	American Association of Museums
AAPC	Art and Architecture Program Committee
AAT	Art and Architecture Thesaurus
ABI/INFORM	EPIC database of business and management topics
ACRL	Association of College and Research Libraries
ADAG	Architectural Drawings Advisory Group
AHIP	Art History Information Program (Getty)
AIA	American Institute of Architects
AIC	Art Institute of Chicago
AITF	Art Information Task Force
ALA	American Library Association
ARLIS-L	ARLIS/NA List Service
ARLIS/NA	Art Libraries Society of North America
ASIS	American Society for Information Science
AVIADOR	Avery Videodisc Index of Architectural Drawings (RLIN)
AWARE	American Wing Art Research System, Metropolitan Museum of Art, New York
CAA	College Art Association
CCA	Centre Canadien d' Architecture/Canadian Centre for Architecture
CD-ROM	Read-only memory compact disk
CD-I	Interactive compact disk
CIC	Committee on Institutional Cooperation
CIHA	International Committee of the History of Art
CLA	Canadian Library Association
CNLIA	Council of National Library and Information Associations
CPL	Chicago Public Library
CRL	Council on Library Resources
CTA	Chicago Transit Authority
DBMS	DataBase Management System
DIALOG	Online reference system
EPIC	OCLC'S online reference system



ACRONYMS AND TERMS

ERIC	Educational Resources Information Center
HDTV	High Definition TeleVision
HWLC	Harold Washington Library Center
ICONCLASS	Iconographic classification system
IFLA	International Federation of Library Associations and Institutions
ILL	Interlibrary Loan
ILLINET	Illinois Library Information Network
LCSH	Library of Congress Subject Headings
MARC	Machine Readable Cataloging Record
MCA	Museum of Contemporary Art
NAARL	North American Art Library Resources Committee
NACO	National Coordinated Cataloging Operations
NISO	National Information Standards Organization
NOTIS	NOTIS, Inc. (online integrated library system)
NTSC	National Television Standard Code
NUGM	NOTIS User's Group Meeting
OCLC	Online Catalog Library Center, Inc.
OCUC	OCLC Online Union Catalog
OPAC	Online Public Access Catalog
PASALA	Program for the Study of Art and Life in Africa
PLA	Public Library Association
PRISM	Access service to OCLC
RLG	Research Libraries Group
RLIN	Research Libraries Information Network
RTA	Regional Transportation Authority
SCIPIO	Sales Cataloging Index Project Input On-Line (RLIN)
SLA	Special Libraries Association
TAU	Thesaurus Artis Universalis
VRA	Visual Resources Association
VRMS	Visual Resources Management System
UTLAS	UTLAS International Canada (online library system)



560 Harrison Avenue, Boston, MA 02118
tel: (617) 357-5212 / telex: 95 1075
telefax: (617) 338-5763 / cable: Ars Libri, BSN

ars libri, ltd.

RARE AND OUT-OF-PRINT SCHOLARLY BOOKS IN THE FINE ARTS

Ars Libri maintains the largest and most comprehensive stock in the United States of rare and scholarly art-reference books and periodicals. We issue catalogues regularly and provide quotations upon request. We welcome want lists.

We are always interested in purchasing libraries and important individual books in the fine arts.

Currently available:

<i>Catalogue 85:</i>	Prints and Drawings
<i>Special Bulletin 73:</i>	Monographs on Nineteenth-Century Artists
<i>Special Bulletin 72:</i>	Early Christian, Byzantine and Medieval Art
<i>Special Bulletin 71:</i>	American Art: New Acquisitions

BIBLIOTHECA ARTIBUS ET HISTORIAE

JAN BIAŁOSTOCKI

The Message of Images (Studies in the History of Art)

ISBN 3-900731-08-X

US\$ 120

CREIGHTON E. GILBERT

L'arte del Quattrocento (Nelle testimonianze coeve)

ISBN 3-900731-09-8

US\$ 60

RACHEL WISCHNITZER

From Dura to Rembrandt (Studies in the History of Art)

ISBN 3-900731-16-0

US\$ 60

SEYMOUR HOWARD

Antiquity Restored (Essays on the Afterlife of the Antique)

Preface by Ernst H. Gombrich

ISBN 3-900731-11-X

US\$ 120

Recently Published:

MOSHE BARASCH

Imago Hominis (Studies in the Language of Art)

ISBN 3-900731-17-9

US\$ 120

PATRIK REUTERSWÄRD

The Visible and Invisible in Art (Studies in the History of Art)

ISBN 3-900731-18-7

US\$ 120

CRAIG HUGH SMYTH

Mannerism and *Maniera*

(Revised edition of the 1963 publication, with an introduction

by Elizabeth Cropper)

ISBN 3-900731-33-0

US\$ 60

Forthcoming in 1992:

PHILIPP P. FEHL

Decorum and Wit: The Poetry of Venetian Painting

(Essays on the History of the Classical Tradition)

ISBN 3-900731-10-1

US\$ 135

DIETER WUTTKE

Auf Warburgs Spuren (Renaissancephilologie als Kulturwissenschaft)

ISBN 3-900731-38-1

IRSA Verlag

RÜDENGASSE 6, A-1030 VIENNA, AUSTRIA

PHONE: 0222/7130136 FAX: 0222/7130130



20% MEETING DISCOUNT

WE INVITE YOU TO VISIT OUR BOOTH

AN ART ANTHOLOGY

ARTIBUS ET HISTORIAE

artibus
et
historiae

an art anthology

nr 23
1991



ANNUAL SUBSCRIPTION (2 ISSUES)

US\$ 120

SINGLE COPY

US\$ 65

"This is a journal that should be appearing, more and more, in libraries with strong art history holdings."

MAGAZINES FOR LIBRARIES

IRSA Verlag

RÜDENGASSE 6, A-1030 VIENNA, AUSTRIA

PHONE: 0222/7130136 FAX: 0222/7130130



20% MEETING DISCOUNT

WE INVITE YOU TO VISIT OUR BOOTH

F·A·BERNETT·INC



Rare & Scholarly Books
on the

FINE & DECORATIVE ARTS
ARCHITECTURE
ARCHAEOLOGY



2001 Palmer Avenue
Larchmont N.Y. 10538

Tel. 914 834-3026

CATALOGUES ON REQUEST

SPRING **RIZZOLI** 1992

SOFONISBA ANGISSOLA: The First Great Woman Artist of the Renaissance

Ilya Sandra Perlingieri. This pioneering illustrated critical biography documents for the first time the life and work of this important 16th century Italian woman painter, who was a student of Michelangelo and court painter to Philip II of Spain. 224 pages. 110 illus., 40 color. 1544-7. \$50

CARNEGIE INTERNATIONAL 1991

Carnegie Museum of Art. Essays by Mark Francis, Lynne Cooke, et al. This two-volume catalogue is the complete documentation of the largest and oldest exhibition of contemporary art in the United States, including works by Boltanski, Bourgeois, and Cage. Vol I: 144 pages. 129 duotones. Vol II: 96 pages. 35 duotone illus., 43 in color. Two paperback volume, slipcased. 1499-8. \$65

PICASSO AND THINGS: The Still Lives of Picasso

Jean Sutherland Boggs. This extraordinarily comprehensive publication traces Picasso's nearly seventy-year exploration of the still life genre. Accompanies major international exhibition. 384 pages. 393 illus., 145 in color. 1561-7. \$75

JAMES ROSENQUIST: The Early Pictures 1961-1964

Judith Goldman. Examines the early Pop work of this important American artist, including an in-depth essay, interview, and previously unpublished collage studies. 120 pages. 64 illus., 50 in color. Gatefold paperback: 1550-1. \$35

POP ART: An International Perspective

Edited by Marco Livingstone. A provocative reassessment of this influential movement, with an anthology of Pop writings, biographies, and a detailed chronology. Accompanies a major exhibition at the Royal Academy of Arts, London. 312 pages. 309 illus., 196 in color. HC: 1475-0. \$60. PB: 1476-9. \$35

CATALAN PAINTING, VOLUME III: The 19th and 20th Centuries

Joan Ainaud de Lasarte. The third in a three volume series, this beautifully illustrated book surveys the diversity of Catalan modernism, as reflected in the works of Picasso, Miro, Dali, Tapies, and others. Skira/Rizzoli. 160 pages. 101 tipped-in color illus. 1558-7. \$75

A HISTORY OF SOUTH AMERICAN COLONIAL ART AND ARCHITECTURE

Damián Bayán and Murillo Marx. This indispensable reference surveys 400 years of painting, sculpture, and architecture through a comprehensive history of the region, with over 800 new photographs. Includes maps, architectural plans, a glossary, and index of the major monuments. 444 pages. 891 illus., 287 in color. 1555-2. \$85

ARTEFACTOS: Colombian Crafts from the Andes to the Amazon

Benjamin and Liliana Villegas. A magnificent presentation of Colombia's rich crafts tradition, with specially commissioned photographs of jewelry, statuary, cloth, baskets, and other objects. 240 pages. 250 color illus. 1503-X. \$45

LOVES OF THE GODS: Mythological Painting from Watteau to David

Colin B. Bailey. Introduction by Pierre Rosenberg. First book to present the full range of 18th century mythological painting. Published in conjunction with a major exhibition at the Grand Palais, Paris, which will travel to the United States. 580 pages. 459 illus., 100 in color. 1521-8. \$75

RIZZOLI INTERNATIONAL PUBLICATIONS

300 Park Avenue South/New York, NY 10010-5399

1-800-433-1238/ISBN Prefix: 0-8478



A complete set of
Les Maitres de l'Affiche
 will be offered at our
 50th Anniversary Auction on April 29-30, 1992

SWANN GALLERIES

is the oldest and largest U.S. auction house specializing in

- Rare Books
- Autographs & Manuscripts
- Photographs
- Hebraica & Judaica
- Works of Art on Paper

We conduct 35 auctions a year, including two devoted to Prints, Drawings, and Watercolors, two to Photographs and Photographic Literature, one to International Posters, and frequent sales of Art & Architecture Books, Modern Illustrated and Press Books, and Rare Books of all periods.

For a quarterly newsletter, catalogues, and information on consigning to future sales, please call Caroline Birenbaum at (212) 254-4710.

SWANN GALLERIES
 104 East 25 Street, New York, N.Y. 10010 • (212) 254-4710

THE KNOEDLER LIBRARY ON MICROFICHE

American and International Auctions,
 Exhibitions, Salons.
 Brochure available upon request

*"I find this material
 indispensable in the search
 for lost works or the
 tracking of provenances.
 It should be part of
 every major research
 or reference collection
 in the arts."*

-Lorenz Eitner

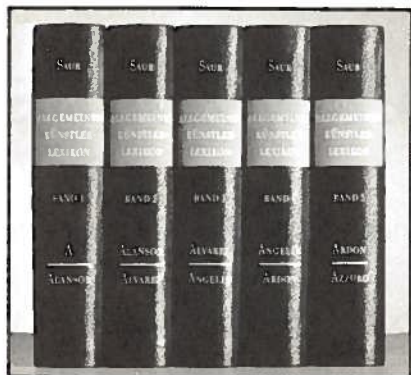
THE KNOEDLER LIBRARY

19 East 70th Street, New York, N.Y. 10021

Tel. 212-794-0567

Fax 212-570-6616

A LANDMARK ENCYCLOPEDIA
FOR ART HISTORIANS AND COLLECTORS...



ALLGEMEINES KÜNSTLERLEXIKON

DIE BILDENDEN KÜNSTLER ALLER ZEITEN UND VÖLKER

Saur announces that it has assumed publication of the **Allgemeines Künstlerlexikon (AKL)**. Formerly published by E.A. Seemann Verlag (Leipzig), this major reference work contains highly detailed and definitive biographies of artists from classical times to 1950.

The **AKL** is the single most comprehensive work of its kind ever conceived. Compiled by a distinguished editorial team, in collaboration with scholars the world over, it will culminate in approximately 60 volumes of detailed documentation on painters, sculptors, architects, graphic artists, and applied arts practitioners from all countries, epochs, and cultural spheres—almost half a million articles in all.

The previously published three volumes have been reprinted as four volumes of equal length, printed on acid-free paper with durable library bindings. These volumes as well as a new fifth volume, which completes the letter "A," are now available.

Sponsored by the Comité International d'Histoire de l'Art and the German Documentation Centre for Contemporary History.

November 1991. ISBN 3-598-22740-X (set) Volumes 1, 2, 3, 4 & 5 \$240 tentative per volume (\$80 tentative special per volume price for volumes 1-4 for past subscribers). Standing orders for the entire set are now being accepted.

For more detailed information, please call Walter Jaffe collect at (212) 337-7024.

K.G. Saur • A Division of R.R.Bowker • 245 W. 17th Street New York, NY 10011

AAUP Combined Book Display

From University of Illinois Press

SECRETS OF EL DORADO: Colombia

German Arciniegas, Clemencia Plazas, and Jamie Echeverri

ISBN: 0-252-01914-8 \$65.00

Stunning color photographs of the Quimbaya treasure and of other outstanding examples of prehistoric Colombian gold work combined with a clear, readable text providing information on the cultures that produced the gold objects and the techniques used in their production, as well as on the work itself.

SUPERFLUOUS THINGS: Material Culture and Social Status in Early Modern China

Craig Clunas

ISBN: 0-252-01930-X \$39.95

Probes the history of material culture in Ming China, presenting a guidebook of taste for a surprisingly consumer-oriented civilization. Clunas analyzes the paintings, calligraphy, bronzes, ceramics, carved jade, and other trappings of the elites of Ming China and describes contemporary attitudes toward them.

BIRDS OF A FEATHER

Philipp P. Fehl

ISBN 0-252-06241-8 \$19.95

A selection of drawings of spirited birds, some of whom speak and wear eighteenth-century dress, but all of whom are worldly-wise.

THE JOURNAL OF AESTHETIC EDUCATION

Quarterly ISSN 0021-8510 Institutions: \$32.00 Individuals \$18.00

A compendium of interdisciplinary articles and reviews addressed to educators in the arts and humanities, to aestheticians and philosophers of art, and to educational administrators and policymakers.

From Syracuse University Press

WINSLOW HOMER AND THE ILLUSTRATED BOOK

David Tatham

ISBN: 0-8156-2550-2 Cloth \$34.95 384 pp. 171 Illus. Index

This volume makes available for the first time and places in a rich cultural context all of Homer's work as an illustrator of prose and poetry, some of which had been wholly unknown even to Homer scholars. The book also contributes to the growing body of literature on the history of the book and publishing industry.

See these and many other new titles from University Presses!

THE ASSOCIATION OF AMERICAN UNIVERSITY PRESSES, INC.

Winner of
Art Libraries Society
of North America
Thirteenth Annual
George Wittenborn
Memorial Book Award

GEORGE WITTENBORN AWARD



ART LIBRARIES SOCIETY OF
NORTH AMERICA

HOLABIRD & ROCHE and HOLABIRD & ROOT

AN ILLUSTRATED CATALOGUE OF WORKS, 1880-1940

Edited by
ROBERT BRUEGMANN
and the Chicago Historical Society

3-volume set \$750 1,500 pages 12 x 9 ISBN 0-8240-3974-2

- Documents more than 1,500 commissions, including address, construction dates, contractor, cost, building history, present status, and more.
- Over 1,400 illustrations, with hundreds of photographs.

"Monumental work and a great read."
—Chicago Tribune

"An unprecedented view of the inner workings of one of Chicago's most prestigious firms... Brueggmann's work will set the standards for large firms analysis."—FOCUS, Chicago Chapter, American Institute of Architects

"This extraordinary source, well worth its extraordinary price, is highly recommended."
—Choice

"The mother lode at last! A colossal accomplishment: an essential reference work that is comprehensive in its scholarship, gracefully composed, and compellingly readable."
—Inland Architect

Send for a free brochure



GARLAND PUBLISHING
1000A Sherman Avenue, Hamden CT 06514
To order: 800-627-6273

The Definitive Guide to Artists
of the 80s

World Artists 1980-1990

Edited by Claude Marks
432pp., 1991
ISBN 0-8242-0802-1
\$50 U.S. and Canada,
\$60 other countries.

World Artists 1980-1990 offers in-depth coverage of the art explosion of the 80s in a single, easy-to-use volume. Editor Claude Marks provides clear, concise sketches of some 120 outstanding artists from around the world—including the progenitors of the major styles and movements. Thorough, accurate, and completely up-to-date, *World Artists 1980-1990* is *the* definitive guide to the art and artists of the decade.



Clockwise from top
Patricia Gonzalez,
Jean-Michel Basquiat,
Keith Haring

The Key Figures of Postmodern Art

Presenting insightful biographies of such major figures as Anselm Kiefer, Julian Schnabel, Jeff Koons, Sandro Chia, Susan Rothenberg, Francesco Clemente, and Keith Haring, *World Artists* also covers lesser-known but equally important artists like Julien Alberts, John Dawson, Ana Mendieta, and Richard Miller.

The Ultimate Biographical Dictionary

The articles in *World Artists* interweave biography, critical commentary, and anecdote as they accurately trace each artist's career and identify associations and events that have helped shape their work. Each article is followed by a list of major solo and group exhibitions; a listing of collections of the artist's work; and a bibliography of critical evaluation that includes show catalogs, articles, and books.

Order Today!

An outstanding compendium of the postmodern art scene, *World Artists 1980-1990* meets the needs of students, scholars, art lovers, and gallery and museum lovers alike.

**To Order Call Toll-Free
1-800-367-6770.**
Outside of the U.S.
and Canada, call
1-212-588-8400.
Telefax
1-212-590-1617.



T H E H . W . W I L S O N C O M P A N Y

9 5 0 U N I V E R S I T Y A V E N U E . B R O N X . N Y 1 0 4 5 2

**Kraus International Publications and
Worldwide Books Present. . .**

The

This new reference work offers art researchers a
subject-classified bibliographic presentation of the

THE WORLDWIDE BIBLIOGRAPHY OF ART EXHIBITION CATALOGUES 1963-87

Worldwide

THE WORLDWIDE BIBLIOGRAPHY OF ART EXHIBITION CATALOGUES 1963-87

Bibliography

THE WORLDWIDE BIBLIOGRAPHY OF ART EXHIBITION CATALOGUES 1963-87

of Art

THE WORLDWIDE BIBLIOGRAPHY OF ART EXHIBITION CATALOGUES 1963-87

Exhibition

THE WORLDWIDE BIBLIOGRAPHY OF ART EXHIBITION CATALOGUES 1963-87

Catalogues

THE WORLDWIDE BIBLIOGRAPHY OF ART EXHIBITION CATALOGUES 1963-87

1963-1987

■ PLEASE STOP BY THE WORLDWIDE BOOKS BOOTH ■

To receive further information on this title and other art titles
simply call our

TOLL-FREE number:

800-223-8323



Kraus International Publications

A Division of The Kraus Organization Limited
Route 100, Millwood, NY 10546
800-223-8323 • 914-762-2200

most important art exhibition
catalogues produced over
the past 25 years.

Under the four main sections
of Western Art, Non-Western
Art, Media, and Topics, more
than 19,000 catalogues are
arranged chronologically and
geographically. In addition,
the Monograph section
cites works on artists,
organized by artist's name.

A Title Index of all the
catalogues is also provided.

ISBN 0-527-98004-8
AVAILABLE FEBRUARY 1992
3 Vols.

**SPECIAL
Pre-Publication Price
\$285.00**

When you have:

Art objects
Slides/photos/films/tapes
Rare books/manuscripts
Library materials
Membership information



you must:

Catalog/describe
Lend/circulate
Query/search
Publish
Display images

You need **STAR**®

That's because STAR was designed expressly to handle text databases and related management processes . . . adapting to *your* collection and *your* way of working.

Wordprocessing systems and general-purpose DBMS's can't do it. Neither can inflexible, "do-it-our-way" systems. With STAR, you'll be up and running fast . . . confident that it will adapt easily to any new requirements.

You'll also be in good company, with the Program for Art on Film, Museum of American Folk Art, Museum of Modern Art, the Royal Armouries (Tower of London) . . . and many other STAR users that are enjoying the benefits of successful automation.

Call us at 1-800-366-1390 for information
or a demonstration. You'll find that STAR is
the right way for you, too.

**Cuadra
STAR**®

The right tool for text management

Cuadra Associates, Inc., 11835 W. Olympic Blvd., Suite 855, Los Angeles, CA 90064
Tel: (310) 478-0066 & (800) 366-1390 • Fax: (310) 477-1078
New York Sales Office: (212) 984-0743 • Washington, D.C. Sales Office: (202) 463-2107

Art ON FILM

an information resource serving art and film professionals

THE PROGRAM FOR ART ON FILM OFFERS YOU ACCESS TO:

■ THE ART ON FILM DATABASE

A unique compilation of data on over 17,000 international videos and films on the visual arts, including content synopses and detailed subject indexing, with citations of reviews and critical evaluations.

■ PUBLICATIONS

Publications include a directory of *Art on Screen* (Boston: G. K. Hall Co., February 1992); *Films & Videos on Photography* (The Metropolitan Museum of Art, 1990); *Bibliography of Films on Art*; and more.

■ VIDEO ANTHOLOGY: ART ON FILM/FILM ON ART

A series of five videocassettes, plus a users' guide, focusing on issues involved in making films about art. The anthology includes fourteen short productions, commissioned by the Program for Art on Film's Production Laboratory, which feature art from many periods and countries, ranging from Egypt through Manet. Available Spring, 1992.

■ EDUCATIONAL ACTIVITIES

Workshops, conferences, screenings, critical evaluations of films and videos on art.

For more information about the Program for Art on Film and its activities, contact:

PROGRAM FOR ART ON FILM

980 Madison Avenue, New York, New York 10021

TELEPHONE: 212-988-4876 FAX: 212-628-8963

A JOINT VENTURE OF THE METROPOLITAN MUSEUM OF ART AND THE J. PAUL GETTY TRUST

YES,
please send me
more information
about the
Program for
Art on Film

NAME _____
TITLE _____
INSTITUTION/COMPANY _____
DEPARTMENT _____
ADDRESS _____
CITY/STATE/ZIP _____
TELEPHONE () _____ FAX () _____
This address/phone is: business personal
Please check whether you are: film programmer
 educator art historian filmmaker
other _____

BHA

BIBLIOGRAPHY OF THE HISTORY OF ART
BIBLIOPHIE D'HISTOIRE DE L'ART

This essential research guide provides 24,000 citations per year covering the current literature of Western art from late antiquity to the present. Published quarterly and priced at \$325.00 for four volumes, BHA presents abstracts in either French or English and a complete index in both French and English. An annual cumulative index will also be published, and online searching is available on DIALOG. BHA is a joint venture of the Getty Art History Information Program (AHIP) and the Institut de l'Information Scientifique et Technique (INIST).

SPECIAL FEATURES:

- 24,000 citations a year
- quarterly volumes
- annual cumulative index
- subject, author, journal index
in French and English
- abstracts in French or English
- online searching on DIALOG



Orders may be sent to:

BHA, Sterling and Francine Clark Art Institute, Williamstown, MA 01267

If you missed the exhibit

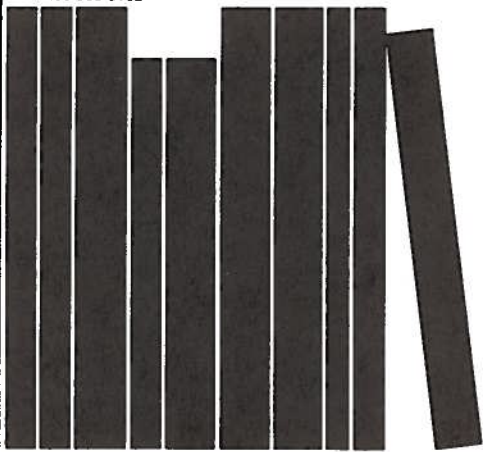
Bauhaus
Constructivism
De Kooning
Dine
Duchamp
Hockney
Johns
Matisse
Monet
Pop Art
Rauschenberg
Rothko
Stella
Warhol
& others

Exhibition Catalogues
of Painting, Sculpture
& Graphics on
20th Century Artists.
Current & Out-of-print.

Send for our inventory catalogue. Mail \$1.00 to:

ART CATALOGUES

35625 Highway 190 Box 650
Springville, CA 93285
1 800 835 4404
FAX 209 539 3182



The most experienced supplier
of Italian publications to
libraries throughout the world.

Monthly bibliographical cards
for all new books.

Highly selective blanket orders
to meet every library's
special requirements.

Standing orders for series and
multi-volume monographs.

Subscription to periodicals with
direct, centralized mailing.

Searching for out-of-print
material.

Library binding.

Casalini libri

50014 Fiesole (FI), Italy
Tel. (39-55) 599.941
Fax (39-55) 598.895

LATIN AMERICAN ART BOOKS

Mexico • Caribbean
Central America • South America

NEW AND OUT-OF-PRINT

PRE-COLUMBIAN • COLONIAL
19TH CENTURY • CONTEMPORARY
ALL SUBJECTS

PLEASE REQUEST OUR CATALOGUES
155 Latin American Art and Architecture
156 Mexican Art and Architecture



Libros Latinos

POST OFFICE BOX 1103
REDLANDS, CALIFORNIA 92373
(714) 793-8423
FAX: (714) 335-9945

The Art Library Essentials

On Picture Varnishes and Their Solvents

Describes the inherent properties of
thermoplastic resins, their life cycles, and how
they can be safely removed.

AIC Members \$10/ Non-Members \$20
(plus \$3 postage and handling)

1992 AIC Directory

A valuable tool for all those who need to make
contact with people in the conservation field.

Contains listings of AIC members by name,
specialty and geographic region, and listings of
conservation related organizations in the U.S.
and abroad. \$38 (plus \$5 postage and handling)

Journal of the American Institute for Conservation

Containing articles, book reviews, and other contributions dealing with current issues, research and
technical procedures in the conservation field. A must for all arts and humanities, museum, and
historical society libraries. 1992 subscription (three 120-page issues): U.S. \$53/ All other countries \$71

To order:

Send check or money order to: American Institute for Conservation of Historic and Artistic Works,
1400 16th Street, N.W., Suite 340, Washington, D.C. 20036; (202) 232-6636; fax (202) 232-6630.



NOTES

NOTES