

1985
Conference
Program

ARLIS/NA



CONFERENCE PROGRAM

**THIRTEENTH ANNUAL CONFERENCE
■ ART LIBRARIES SOCIETY OF NORTH
AMERICA ■ LOS ANGELES ■ HYATT
REGENCY ■ FEBRUARY 8-14, 1985**

SPONSORS

ARLIS/NA wishes to acknowledge, with gratitude, the following firms and institutions who have contributed to the realization of the 13th annual conference.

Ars Libri
Art Catalogs
Davis & Schorr Art Books
Garland Publishing Company
Hennessey & Ingalls

In-Kind Contributions

Craft & Folk Art Museum
California State University,
Long Beach
J. Paul Getty Center for the
History of Art and the Humanities
Los Angeles County Library System
Los Angeles County Museum of Art
Los Angeles Public Library
University of California, Los
Angeles
University of California, Riverside
University of Southern California

Copyright ©1985, ARLIS/NA
Art Libraries Society of
North America
3775 Bear Creek Circle
Tucson, AZ 85749
602/749-9112

Illustrations taken from drawings
by Joe Fay, ©1984
Publication Design by
DESIGN/Max King, Santa Monica

EXHIBITORS

ABC-Clio Information Services
Abbeville Press
Ars Libri, Ltd.
The Art Marketing Letter
Art Sales Index Limited
Association of American University
Presses
John Benjamins, Antiquarian
Booksellers
R.R. Bowker
Budek Films & Slides
Califia
Centro Di
Chadwyck-Healey, Inc.
Clearwater Publishing Company, Inc.
Editions Cahiers d'Art
Emmett Microform
Garland Publishing, Inc.
The J. Paul Getty Museum
G.K. Hall & Company
Greenwood Press
Han-Shan Tang, Ltd.
Otto Harrassowitz
Thomas Heneage & Company, Ltd.
Institute for Scientific Information
Kenneth Karmiole, Bookseller, Inc.
Howard Karno Books, Inc.
M. Knoedler & Company, Inc.
Licosa Libreria Commissionaria
Sansoni SPA
MIT Press
Mindata, Ltd.
Mini-Aids
Printed Matter
RILA International Repertory of the
Literature of Art
Real Comet Press
Research Libraries Group, Inc.
Rizzoli International Publications
Saskia, Ltd.
K.G. Saur, Inc.
Kurt L. Schwarz, Antiquarian Books
R.W. Smith, Bookseller
UCLA Museum of Cultural History
Antiquariaat H.A. Vloemans
H.W. Wilson Company
Worldwide Books
Zeitlin & Ver Brugge, Booksellers

WELCOME

The 1985 ARLIS/NA Planning Committee, the many volunteers from the Western Region chapters (listed elsewhere), and members of the Southern California chapter welcome their colleagues from across North America and around the world. We have planned a conference that, while diverse, focuses on current issues in art and art librarianship: technological advancement; pluralism of clientele and of resources; and special problems in contemporary art documentation. Workshops, discussion groups, and rap sessions provide forums for other special interests.

We have expanded the number of workshops offered this year in response to suggestions from individuals and encouragement from the ARLIS/NA Education Committee. Tours are wide-ranging in topical focus and geographical area, reflecting the size and diversity of Los Angeles itself.

Our conference theme, *Los Angeles: Metaphor for the Future*, is intended to draw attention to the multi-faceted nature of our city. It also reflects outwards our sense that the cultural diversity so obvious here—some would say jarringly so—is but a paradigm of the growing aesthetic diversity everywhere. Or is it possible that what is growing is not the amount of diversity, but the western world's attention to it? We hope that this 13th ARLIS/NA conference will raise as many questions as it answers and stimulate as much as it fulfills.

**1985 ARLIS/NA Conference
Planning Committee**

- Christine Ackema,
Los Angeles Public Library
Guidebook Assistant
- Carl S. Baker,
Los Angeles County Museum of Art
Poster Coordinator
- Joan M. Benedetti,
Craft & Folk Art Museum
Conference Chair, Program Coordinator
- Deborah L. Boone,
J. Paul Getty Center for the History
of Art and the Humanities
Tour Coordinator
- James M. Bower,
J. Paul Getty Center for the History
of Art and the Humanities
*Guidebook Editor,
Hospitality Suite Coordinator*
- Henry J. DuBois,
California State University,
Long Beach
*Exhibits Coordinator, Liason,
Fundraising and Local Advertising.*
- Eleanor C. Hartman,
Los Angeles County Museum of Art
Registration/Information Desk Coordinator
- Helene Kosher,
University of California, Riverside
Mail Art Exhibit Curator
- Joyce Ludmer,
University of California, Los
Angeles
*CAA/ARLIS Jt. Session Moderator,
Liason, Woman's Caucus for Art*
- Susan Malkoff—Smith,
J. Paul Getty Center for the History
of Art and the Humanities
*Executive Board Liason, Coordinator,
Special Projects*
- Nancy A. Smith,
University of Southern California
Transportation Coordinator
- Nancy A. Stowbridge,
Los Angeles County Museum of Art
Sales Booth Coordinator

Other Planning Coordinators

- Lois Benson-Talley,
California State University,
Long Beach
Fundraising
- Marion Buzzard,
University of California, Irvine
Local Publicity
- Barbara Frank,
University of California, Irvine
Coordinator, Guidebook Sales at CAA
- Betsy Galloway,
Art Center College of Design
Signage Coordinator
- Jennifer Rose,
J. Paul Getty Center for the History
of Art and the Humanities
Local Advertising

1984 ARLIS/NA Executive Board

- Mary Ashe,
Art & Music Department,
San Francisco Public Library
Chairman
- Toni Petersen,
Bennington College Library
Vice-Chairman/Chairman-Elect
- Lynette M. Korenic,
Arts Library, University of
California, Santa Barbara
Secretary
- Mary Jane Cuneo,
Fogg Art Museum Library,
Harvard University
Treasurer
- Nancy S. Allen,
Library, Museum of Fine Arts
Boston
Past Chairman

Regional Representatives

- Stephanie J. Frontz,
Fine Arts Library, University of
Rochester
Eastern Region
- Susan Malkoff—Smith,
J. Paul Getty Center for the History
of Art and the Humanities
Western Region
- Michele Laing,
Architecture & Fine Arts Library,
University of Manitoba
Canadian Region

Executive Director

- Pamela Jeffcott Parry

GENERAL INFORMATION

Pre-registration

Pre-registration forms and fees for the sessions of the thirteenth annual conference of ARLIS/NA must be received no later than December 28, 1984. Pre-registration is required for most special events, such as tours, workshops, meals, and receptions, whether an additional fee above basic registration is charged or not. All such events will be filled on a first-come, first-served basis. Keep in mind that space is limited for almost all special events, so please return your pre-registration materials early. Tickets for all events will be distributed at the Registration/Information Desk upon your arrival. Basic registration fees include attendance at all regular sessions, the Convocation and Reception at The J. Paul Getty Museum in Malibu (admittance with ticket only), a party in honor of new ARLIS/NA members and first-time conference attendees (cash bar), the exhibits opener (a continental breakfast), an artists' party, and access to the exhibits.

If tickets remain for any special events, they will be available at the Registration/Information Desk. Please keep in mind that the ARLIS/NA Executive Board has established the following policy: Any guests of conferees are encouraged to register for the conference as a whole. Unregistered guests will be permitted to buy tickets for tours and special events on a space-available basis only immediately prior to the event, after all registered conferees have been accommodated.

On-Site Registration

For those unable to pre-register, on-site registration will begin on Thursday, February 7 at 6 pm and will end on Wednesday, February 13 at 10:30am. See the Conference Schedule that follows for

Registration/Information Desk hours. A late charge of \$10 will be added to the registration fee for on-site registration. You must also expect that most special events will be filled by the time you register on-site.

Refunds

Requests for refund of registration fees *must have been received by Pamela Parry in writing by January 21, 1985*. A \$5 processing fee will be deducted. No on-site refunds will be made.

Registration/Information Desk

Registration/Information Desk hours are printed in the conference schedule following. Bulletin boards are provided as information centers and to hold messages both personal and professional. Members of the ARLIS/NA Western Region chapters (SoCal, NoCal, Arizona, and NoWest) will staff the Desk and help you with tourist, transportation, and general information about the conference and the city.

Sales Booth

For the first time, we are operating a sales booth separate from the Registration area to sell this year's fundraiser, a full-color fine art poster featuring an original drawing by the L.A. artist, Joe Fay. Some ARLIS publications and fundraising items from previous conferences are also available. Cash or checks accepted. No credit cards. Sales Booth hours are printed in the following schedule.

Exhibits

Exhibits will open Monday morning, February 11, with a complimentary continental breakfast buffet at 9am. Hours of the exhibit hall are listed in the following schedule. Exhibitors will include publishers, book dealers, and visual resource suppliers. They welcome your questions and comments, and provide a vital source of income to the

Society. Please visit them often during the conference.

Hospitality Suite

An ARLIS conference tradition, our Hospitality Suite will operate each evening (except Saturday, February 9) from Thursday, February 7 through Wednesday, February 13. Wine, beer, and soft drinks are available, in a congenial setting, at a cash bar tended by Western Region members. Stop by to see old friends and make new acquaintances!

New Members'/First Timers' Party

All 1985 conference registrants attending their first ARLIS conference may turn in the coupon they will find in their registration packet for a complimentary glass of champagne (or soft drink) at this special late-night party to be held after buses return from the Convocation at the Getty Museum. "Old-timers"—be sure to stop by to make our new friends welcome!

Members' Mail Art Exhibit

An exhibit of mail art by ARLIS members and friends will be on display in the Regency Foyer February 10-12 of the conference. A party early Sunday evening, February 10, will honor both Joe Fay, our poster artist, and those who have contributed to the mail art show. A brief catalog will be available. See schedule for Mail Art Exhibit hours.

HOTEL SITE: BALLROOM LEVEL

TERRACE LEVEL

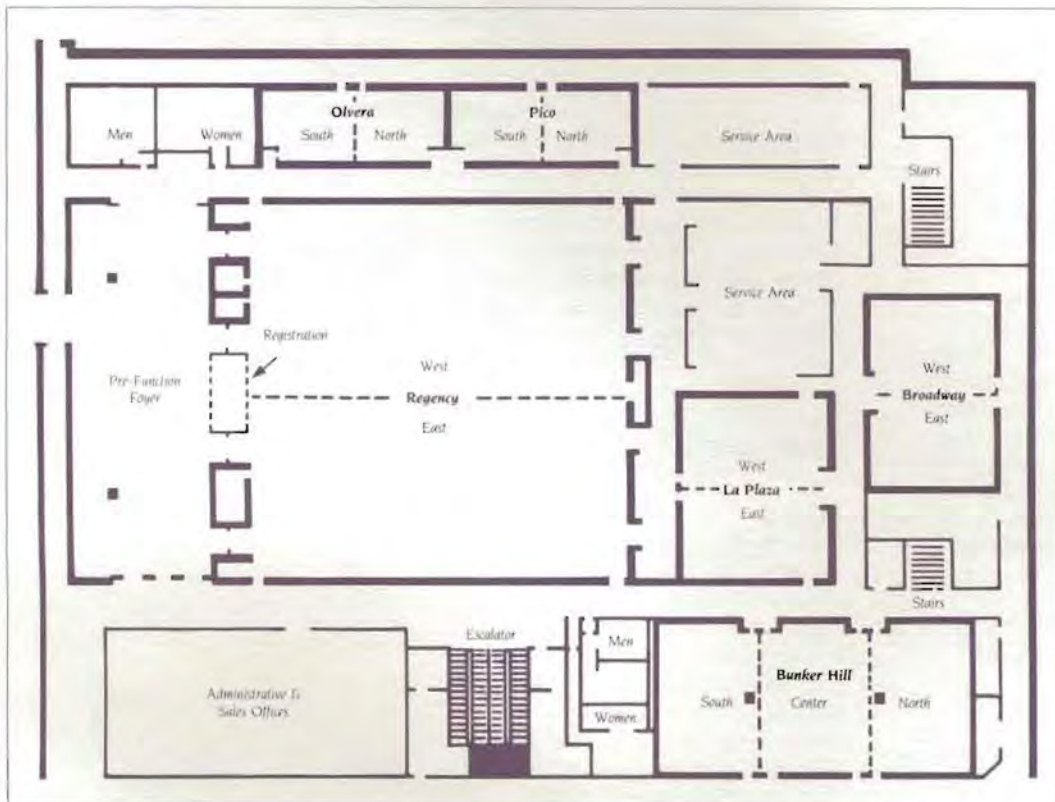
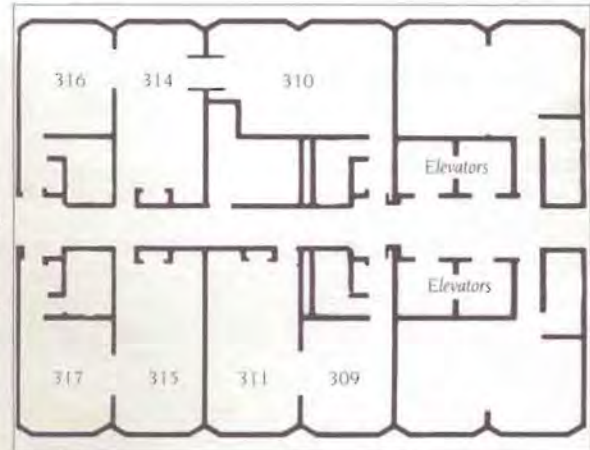
Getting Around the Hyatt Regency

The Hyatt Hotel Lobby is reached from street level by going down the elevator one flight to the Garden Level. On this floor are the Sidewalk Cafe and the Pavan restaurants as well as a Lobby Piano Bar. The two levels below are also reached by escalator. One level down is Level A for valet parking. Below that is Level B where all major sessions will take place. All meeting rooms on Level B have names (Olvera, Broadway, Pico, etc.). See Floor Plan below.

All committee meetings and small meetings will take place on the 3rd floor or Terrace Level. You can reach this level by taking the hotel room elevator. All of these rooms are numbered in the 300's. See Floor Plan, right.

Sleeping rooms are reached via the hotel room elevators. They are on floors 3-25. The Angel's Flight revolving restaurant and bar is (where else?) at the top on the 26th floor. A Concierge on duty in the Lobby from 7am to 8pm can help you find what you need in the hotel and elsewhere as well as arrange tours and make restaurant reservations for you.

Our Hospitality Suite (see schedule for hours) is located in Room 2208. Take the hotel elevator to the 22nd floor.



ON-GOING SERVICES

On-going Services and Activities

Registration/Information Desk,

Regency Foyer

Th Feb 7, 6-9pm

Fr Feb 8, 7:30-10am;
6-9pm

Sa Feb 9, 7:30am-4pm

Su Feb 10, 8am-5pm

Mo Feb 11, 8am-5pm

Tu Feb 12, 8am-12noon;
4:30-6:00pm

We Feb 13, 6:30-10:30am

(Wednesday only, Regis/Info will be in
Rm 310; coffee will be available.)

Sales Booth,

Regency Foyer

Fr Feb 8, 6-9pm

Sa Feb 9, 7:30am-4pm

Su Feb 10, 8am-5pm

Mo Feb 11, 8am-5pm; 7-9 pm

Tu Feb 12, 8am-12noon;
4:30-6:00pm

We Feb 13, 8:30-10:30am;
6:30-8:30pm

(Wednesday only, Sales will be in
Rm 310; coffee will be available in
the morning.)

Hospitality Suite,

Rm 2208

Th Feb 7, 7-10pm

Fr Feb 8, 7-10pm

Su Feb 10, 9-11pm

Mo Feb 11, 5:30-7:30pm;
9-11pm

Tu Feb 12, 5-7pm;
9-11pm

We Feb 13, 6-8pm

Exhibits,

Regency Ballroom

Mo Feb 11, 9am-5pm;
7-9pm

Tu Feb 12, 9am-1pm

Mail Art Exhibit,

Regency Foyer

Su Feb 10, 4:30-6pm

(Opening Party)

Mo Feb 11, 9am-9pm

Tu Feb 12, 9am-6:00pm

Program Terminology

•SIC: Special Interest Group

•TOL: Type of Library Group

•Lecture: Person or persons speak-
ing individually from a podium

•Panel Discussion: Group of speakers
who speak and react and who are
introduced and coordinated by a
moderator

•Discussion Group: Small group of
participants holding a relatively
unstructured discussion with
appointed moderator

•Workshop: A program in which the
participants receive materials or
perform exercises in order to learn
techniques/processes in a highly
structured session

•Business Meeting: A session with an
agenda led by a moderator for
accomplishing Society business

•Rap Session: Similar to "discussion
group" but may not necessarily
have moderator

Smoking

Smoking is not permitted in
sessions unless voted otherwise by
the majority of the participants of
each session just prior to the begin-
ning of that session. There are
lounge areas located conveniently
near meeting rooms where
conferees may smoke.

WED/THUR/FRIDAY

PRE-CONFERENCE

All numbered rooms are on the 3rd floor (Terrace Level). All named rooms are on Level B (Ballroom Level). See Meeting Room Floor Plans. Tour buses will leave from and return to the Hyatt at the Hope Street entrance.

WEDNESDAY Executive Board Meetings
9am-5pm Open to membership on a limited-only-by-seating-available
Rm 317 basis.

THURSDAY Executive Board Meetings
9am-5pm Open to membership on a limited-only-by-seating-available
Rm 317 basis.
6-9pm Registration/Information Desk open.
Regency Foyer
7-10pm Hospitality Suite open.
Rm 2208

FRIDAY Registration/Information Desk open.
7:30-10am
Regency Foyer

PRECONFERENCE WORKSHOPS

Fees and pre-registration required.

Transportation from the Hyatt and return provided. Listed below are times for departure and return of buses to Hyatt, with actual workshop times in parentheses.

8am-6pm
(9-5)
California Institute of
the Arts,
Valencia

FILM AS ART/FILM ABOUT ART: FILM/VIDEO IN THE ART LIBRARY.

Loren Singer, coordinator, with the assistance of Margie Hanft. Sponsor: The ARLIS/NA Education Committee.

This all-day workshop will consider the relationship of art and film/video, assess their value from an educational perspective, and investigate practical problems relating to their organization and use. Additional topics to be covered are developing art film and video reference materials; the history of video art; programming and evaluation of art film/video; and problems of promotion of film/video artists and their work.

Speakers: Margie Hanft, California Institute of the Arts
Lori Starr, Visual Arts Programs, USC Continuing Education
Susan Besemer, Butler Library, SUNY Buffalo
Douglas Edwards, Academy of Motion Picture Arts and Sciences
Jonathan Held, Dallas Public Library.

PRE-CONFERENCE

- 8:30am-5:30pm**
(9-12; 2-5)
J. Paul Getty Center
for the History of Art
and the Humanities,
Santa Monica
- RARE BOOKS FOR ART LIBRARIES: INCUNABLES TO THE 18TH CENTURY**
Marcia Reed, coordinator.
An all-day workshop, the morning will focus on the usefulness of rare books as sources for art historical research. The afternoon session will deal with the unique characteristics of rare books and their special care and handling.
Speakers: Alan Jutzi, Huntington Library
Marcia Reed, Getty Center Library
Joyce P. Ludmer, UCLA Art Library
John Bidwell, Clark Memorial Library
Linda K. Ogden, conservator
J.M. Edelstein, National Gallery of Art
Griselda Warr, Huntington Library
Eleanor Riley, J. Paul Getty Conservation Institute
- 8:30am-1pm**
(9am-12:30pm)
Pepperdine Plaza
West Los Angeles
- COMPUTER LITERACY: BASICS OF MICROCOMPUTING**
Nancy Allen and Martha Padawar, coordinators.
Sponsored by the J. Paul Getty Trust and the ARLIS/NA Computer Interest Group.
This half-day workshop will introduce basic concepts of microcomputing. Participants, under instructor's supervision, will learn how to boot the system; format a diskette; load a database management program; create a file, save it, and print it.
- 1-5:30pm**
(1:30-5pm)
Pepperdine Plaza
West Los Angeles
- MANAGING ART INFORMATION WITH A MICROCOMPUTER**
Nancy Allen and Martha Padawar, coordinators, with the assistance of Patricia J. Barnett, Marguerite D'Aprile-Smith, Angela Giral, and Roger Lawson. Sponsored by the J. Paul Getty Trust and the ARLIS/NA Computer Interest Group.
This half-day workshop is intended to illustrate the use of a microcomputer to manage art-related information in print, non-print, and object collections. The use of the Art and Architecture Thesaurus to provide the standardized subject vocabulary necessary for the indexing and retrieval of information from three test applications will be demonstrated. The sample applications are: architectural drawings; periodical articles; and photographs of paintings.
- 6-9pm**
Regency Foyer
- Registration/Information Desk open.*
- 6-9pm**
Regency Foyer
- Sales Booth open.*
- 7-10pm**
Rm 2208
- Hospitality Suite open.*

SATURDAY

7:30am-4pm Registration/Information Desk open.
Regency Foyer

7:30am-4pm Sales Booth open.
Regency Foyer

8-9am Business Meeting: Gerd Muehsam Award Committee
Room 309 Jeannette Downing, Chair

8-9am Business Meeting: N.A. Association Relations Committee
Room 311 Sherman Clarke, Chair

8-10am Business Meeting: Fundraising Committee
Room 317 Jeffrey L. Horrell, Chair

9am-12noon **In and Around Downtown L.A. Tours**
Fees and pre-registration required.
L.A. Conservancy Tour: Movie Palaces
L.A. Conservancy Tour: Pershing Square Architecture
(The above two tours will be repeated from 1-4pm.)
L.A. Artists' Studios Tour. Helene Kosher, guide

12noon-1pm Business Meeting: Serials SIG
Rm 311 Sheila Klos, Moderator

12noon-1pm Business Meeting: Cataloging Advisory Committee
Rm 317 Daniel A. Starr, Chair

12noon-1pm Business Meeting: Architecture SIG
Olvera Alson Clark, Moderator

12noon-1pm Business Meeting: Nominating Committee
Rm 309 Suzanna B. Simor, Chair

1-4pm **More In and Around Downtown L.A. Tours**
Fees and pre-registration required.
Repeat of L.A. Conservancy tours (see 9am-12noon, above).
Downtown L.A. Art Galleries Tour. Helene Kosher, guide.
Alternative L.A.: A New Look at Los Angeles. Judy Hoffberg, guide.

4:45-5pm Buses depart for **Convocation** at The J. Paul Getty Museum in Malibu. *Pre-registration and ticket required.*
Arrive at Museum at twilight. Welcoming remarks by John Walsh, Museum Director. Presentation of 1984 Wittenborn and Gerd Muehsam awards.
Keynote Speaker: Robert W. Winter, Occidental College—co-author, *A Guide to Architecture in Los Angeles and Southern California*, 4th ed. (1984)
Buffet reception. Galleries available for viewing. Buses depart 9:15-9:30pm for Hyatt Regency.

10-11:30pm **New Members'/First Timers' Party.**
Rms 310-314-316 Cash bar. Complimentary champagne (or soft drink) for all new members and first-time attendees (with coupon).

286 Summer Street / Boston, MA 02210
telephone: (617) 357-5212
telex: 95 1075 (Ars Libri, BSN)
cable: Ars Libri, BSN

ars libri, ltd.



RARE AND OUT-OF-PRINT SCHOLARLY BOOKS IN THE FINE ARTS

Ars Libri specializes in rare and scholarly books in the fine arts and in illustrated books from the fifteenth to the twentieth century. Our stock of art reference material includes monographs, catalogues raisonné, periodicals and documents relevant to all periods and all fields of art history.

We issue catalogues regularly and provide quotations upon request. We make periodic offerings as well of scholarly libraries and collections, and of original prints and photographs.

We welcome want lists.

Currently available:

Catalogue 47: Italian Painting, Part II: General Works
Catalogue 46: Italian Painting, Part I: Monographs on Artists
Catalogue 45: Sculpture and Sculptors

Special Bulletin 35: Furniture
Special Bulletin 34: Metalwork
Special Bulletin 33: Manuscript Illumination
Special Bulletin 32: Pottery, Porcelain, Glass

We are always interested in purchasing libraries and important individual books in the fine arts.

SUNDAY

- 8am-5pm** *Registration/Information Desk open.*
Regency Foyer
- 8am-5pm** *Sales Booth open.*
Regency Foyer
- 8-10am** *Business Meeting: Standards Committee*
Rm 311 Betty Jo Irvine, Chair
- 9-10:30am** *Business Meeting: Publications Committee*
Rm 317 Carol S. Terry, Chair
- 9:30-10:30am** *Business Meeting: CISSIG*
Olvera Arlene Noble, Moderator
- 9:30-10:30am** *Business Meeting: Women in Art Documentation Group*
Rm 310 Janis K. Ekdahl, Convenor
- 9:30-11:30am** *Business Meeting: Wittenborn '84 and '85 Committees*
Rm 314 Deirdre Lawrence, Chair '84
Robert Kaufmann, Chair '85
- 9:30-11:30am** *Business Meeting: VRSIG*
Pico Nancy L. Kirkpatrick, Moderator
- 10:30-11:30am** *Business Meeting: Education Committee*
Rm 315 Lois Swan Jones, Chair
- 10:30-11:30am** *Business Meeting: International Relations Committee*
Rm 311 William B. Walker, Chair
- 12noon-4pm** **COMMUNICATION SKILLS WORKSHOP**
Olvera Facilitator: Karen Savlov, Management Training Specialist, UCLA
Fee and pre-registration required.
- 1-3pm** **Session A: OUT-OF-PRINT BOOK BUYING**
La Plaza *Co-sponsors: Academic and Museum TOLs*
Moderator: Susan Craig, University of Kansas
Speakers: •Susan Craig, University of Kansas, O.P.—What Is It and Who Needs It
•J.M. Edelstein, National Gallery of Art, The Indispensable Element
•Mary F. Williamson, York University, Toronto, Using the New Technology to Find Old Books
- 1-3:30pm** **Session B: VIDEODISC REVISITED—STATE OF THE ART**
Bunker Hill **APPLICATIONS AND CURRENT ISSUES**
Sponsor: VRSIG
Moderator: Janice Sorkow, Museum of Fine Arts, Boston
Speakers: •Andrew Eskind, International Museum of Photography at George Eastman House, Videodisc and Computers in Tandem: the Ultimate Finding Aid for Large Collections of Visual Material
•Elisabeth Betz Parker, Library of Congress, Videodisks and Computers: New Preservation and Access
•Nicholas Sapielha, Arts Resources/Scala, Title to be Announced
•Carol A. Risher, Association of American Publishers, Copyright: An Impediment or an Incentive to Videodisc Creation

SUNDAY

- 4-5pm** *Business Meeting:* Computer Interest Group
Broadway Patricia J. Barnett, Convenor
- 4-5pm** *Business Meeting:* ARLIS/NA Archives Committee
Rm 309 Nancy S. Allen, Chair
- 4-5pm** *Business Meeting:* Membership Committee
Rm 317 Susan A. Davi, Chair
- 4:30-6pm** *Joe Fay Poster Autographing and*
Regency Foyer *Mail Art Exhibit Party.*
- 6-8pm** *Buffet reception sponsored by Ars Libri.* Fine Arts Building,
811 West 7th St. (across 7th St. from the Hyatt).
- 8:15-10:15pm** *Session C: ADMINISTRATION OF THE ART MUSEUM*
La Plaza *LIBRARY—A DISCUSSION GROUP*
Sponsor: Museum TOL
Moderator: Jeannette Downing, Kimbell Art Museum
- 8:15-10:15pm** *Session D: ARTSPEAK: NEW MEDIA AND THE SOURCES OF*
Broadway *CRITICAL LANGUAGE*
Sponsor: CISSIG
Moderator: Joan Hugo, *Artweek*; Otis Art Institute of Parsons
School of Design
Speakers: •Joan Hugo, *Nonce Words from Artland: A Field Report*
•Mark Johnstone, Freelance Critic and Consultant,
How Still Pictures Speak when Dogs and Angels Meet
•Beverly O'Neill, Otis Art Institute of Parsons School of Design,
How Well Does Art-Speak the New Discourse?
•David Antin, University of California, San Diego,
Currency
- 9-11pm** *Hospitality Suite open*
Rm 2208
- 10pm-12midnite** *Serials Swap I*
Rm 310 Anne O. Reese, Coordinator

MONDAY

- 8-9am**
La Plaza *Business Meeting: Academic TOL*
Thomas J. Jacoby, Moderator
- 8-9am**
Pico *Business Meeting: Museum TOL*
Amy Navratil-Ciccone, Moderator
- 8-9am**
Rm 311 *Business Meeting: Public TOL*
Alice N. Loranth, Moderator
- 8am-5pm**
Regency Foyer *Registration Information Booth open.*
- 8am-5pm**
Regency Foyer *Sales Booth open.*
- 9-10am**
Regency Foyer *Exhibits Opener: Continental Breakfast*
- 9am-5pm; 7-9pm**
Regency Ballroom *Exhibits open.*
- 9am-9pm**
Regency Foyer *Mail Art Exhibit open.*
- 9:30am-12noon**
Bunker Hill South **Session E: CATALOGING FACSIMILES OF AND WORKS ABOUT ILLUMINATED MANUSCRIPTS—A DISCUSSION**
Sponsor: CISSIG
Moderators: Trudi Olivetti, National Gallery of Art, and Bethany Mendenhall, J. Paul Getty Center for the History of Art and the Humanities
- 10am-12noon**
La Plaza **Session F: ART MUSEUM LIBRARY ACQUISITIONS**
Sponsor: Museum TOL
Moderator: Jeannette Downing, Kimbell Art Museum
Speakers: •Ann B. Abid, St. Louis Art Museum, Collection Development: Policies and Methods, •Barbara Sevy, Philadelphia Museum of Art, Acquisitions: the Fun and the Challenge.
Group discussion led by Jeannette Downing, Kimbell Art Museum
- 10am-12noon**
Broadway **Session G: WHAT DOES AN ARCHITECTURAL HISTORIAN WANT?**
Sponsor: Architecture SIG
Moderator: Alson Clark, University of Southern California
Speakers: •John Chase, Author, The Library as a Tool for Local Research, •Tom Owen, Los Angeles Public Library, Finding Architects in Non-Traditional Sources, •Esther McCoy, Author, The Historical Interpretation of 20th Century Architects, •Christopher Hail, Harvard Graduate School of Design, Serving the Architectural Researcher at the Frances Loeb Library.
- 10am-3pm**
Olvera *Film/Video Sampler: Continuous showing of various art-related films and videotapes. See schedule in registration packet and on conference bulletin board.*
- 12-1pm**
Rm 311 *Serials Swap II:*
Anne O. Reese, Coordinator

MONDAY

- 1-3:15pm**
Rm 310 **Session H: UNDER THE HAMMER, BENEATH THE WHEEL—**
AUCTION CATALOG CONTROL WITHOUT SCIPIO—A LIMITED
REGISTRATION WORKSHOP
No fee, but pre-registration required.
Co-sponsors: Serials SIG and Museum TOL
Coordinator: Margot Grier, National Gallery of Art
- 1-3:15pm**
Broadway **Session I: COLLECTION DEVELOPMENT POLICIES IN PUBLIC**
LIBRARY ART DEPARTMENTS
Sponsor: Public TOL
Moderator: Alice N. Loranth, Cleveland Public Library
Speakers: •Romaine Ahlstrom, Los Angeles Public Library,
Planning for Collection Analysis in the L.A. Public Library Art, Music, and
Recreation Department.
•Jane M. Holahan, Dallas Public Library,
New Resources for Collection Development—A Practical Approach to Finding
Funds and Materials.
•Janice H. Chadbourne, Boston Public Library,
Developing the Fine Arts Collection of the Boston Public Library through a
Century of Change.
- 1-3:15pm**
La Plaza **Session J: ONE YEAR LATER—AAT IN THE FIELD**
Sponsor: Art & Architecture Thesaurus Advisory Committee
Coordinator: Roger Lawson, National Gallery of Art
Moderator: James M. Bower, J. Paul Getty Center for the History
of Art and the Humanities
Speakers: •Marguerite D'Aprile-Smith, Art & Architecture
Thesaurus, *An Introduction.*
•James L. Yarnall, National Museum of American
Art, Smithsonian Institution, *The AAT Materials Hierarchy as Applied*
to Works of Art.
•James J. Kopp, Columbia University, *The Avery Index and the AAT:*
Practical Applications of a Developing Thesaurus.
•Janet Stanley, National Museum of African Art, Smithsonian
Institution, *The AAT and the National Museum of African Art.*
- 3:30-5:30pm**
Bunker Hill **Session K: IMAGES ON TAPE—ORAL HISTORIES OF THE L.A.**
ART COMMUNITY DONE BY UCLA AND THE ARCHIVES OF
AMERICAN ART
Sponsor: Academic TOL
Moderators: Joyce Ludmer, UCLA Art Library,
and Dale Treleven, UCLA Oral History Program
Speakers: •June Wayne, Artist, interviewed by Kathryn Smith,
Otis Art Institute of Parsons School of Design
•Artist to Be Announced, interviewed by Lawrence Weschler,
The New Yorker
•Stella Paul, Archives of American Art, Smithsonian Institution,
Southern California Research Center
•Dale Treleven, UCLA Oral History Program
•Susan Ehrlich, Art Historian/Doctoral Candidate, USC
- 3:30-5:30pm**
Broadway **Session L: NEW SERIALS IN REVIEW**
Sponsor: Serials SIG
Moderator: Sheila Klos, Cleveland Museum of Art

MONDAY/TUESDAY

MONDAY

Speakers: •Sheila Klos, Cleveland Museum of Art, *Art History and Auction Catalogs*.
•Kathryn Deiss, Metropolitan Museum of Art, *Contemporary Art and Architecture Periodicals*.
•Joanne Polster, American Craft Council, *Contemporary Craft Periodicals*.
•Juanita Toupin, Montreal Museum of Fine Arts, *Canadian Art Periodicals*.

- 5:30-6:30pm**
Rm 310 *Canadian Members' Rap Session*
Michele Laing, Convenor (It is hoped that the Canadian members will be able to dine together after the meeting.)
- 5:30-6:30pm**
Rm 316 *Business Meeting: Art Documentation Advisory Committee*,
Caroline H. Backlund, Chair
- 5:30-6:30pm**
Rm 315 *Art Schools Rap Session*
Nadene Byrne, Convenor
- 5:30-6:30pm**
Pico *U.C. Librarians Rap Session*
Marion L. Buzzard, Convenor
- 5:30-7:30pm**
Rm 2208 *Hospitality Suite open.*
- 7-8pm**
Rm 317 *Business Meeting: AAT Advisory Committee*
Roger C. Lawson, Chair
- 7-8pm**
Rm 311 *Business Meeting: Historical Bibliography of Art Museum and Gallery Serials Committee*
Christine M. Smith, Convenor
- 7-9pm**
Regency Ballroom *Exhibits open.*
- 7-9pm**
Regency Foyer *Sales Booth open.*
- 8:15-10:15pm**
Broadway *Session M: CATALOGING PROBLEMS DISCUSSION GROUP*
Sponsor: CISSIG
Moderator: Sherman Clarke, Cornell University
- 8:15-10:15pm**
Bunker Hill *Session N: NOT FOR EXHIBITION?—ISSUES OF PURPOSE AND CONTEXT*
Moderator: Clive Phillpot, Museum of Modern Art
Speakers: •Sharon K. Emanuelli, Craft & Folk Art Museum
•Frank Romero, Artist,
•Julie Lazar, Los Angeles Museum of Contemporary Art,
•Clive Phillpot, Museum of Modern Art
- 9-11pm**
Rm 2208 *Hospitality Suite open.*
- 10pm-12midnight**
Rm 310 •*Serials Swap III*
Anne O. Reese, Coordinator

TUESDAY

- 7:30-9am** **Pico North** **Executive Board/Chapter Officers Continental Breakfast**
Pre-registration required.
Stephanie J. Frontz, Coordinator
- 8am-12noon** **Regency Foyer** **Registration/Information Desk open.**
- 8am-12noon** **Regency Foyer** **Sales Booth open.**
- 8am** **Buses depart** for WCA/WAD Session at USC.
See below, Session Q.
- 9am-1pm** **Regency Ballroom** **Exhibits open.**
- 9am-6pm** **Regency Foyer** **Mail Art Exhibit open.**
- 9-11am** **Bunker Hill** **Session O: INTERFACING WITH OCLC—USER RELATIONSHIPS, NEW HARDWARE**
Sponsor: CISSIG
Moderator: Fred A. Hillbruner, School of the Art Institute of Chicago
Speakers: •Stephen C. Bloom, University of Illinois/Chicago Circle, *Automating an Art Library Catalog in a University Library Context.*
•Roberta McCosh, Holabird & Root, *OCLC Clusters—Why They Exist and How They Are Used.*
•Penny Mattern, OCLC, Inc., *The OCLC M300 Terminal—An Introduction.*
•Group discussion, led by Fred A. Hillbruner, School of the Art Institute of Chicago
- 9-11:30am** **Broadway** **Session P: PHOTOGRAPHY—THE ART LIBRARIAN'S BIBLIOGRAPHIC SURVIVAL GUIDE**
Co-sponsors: Serials SIG and Academic TOL
Moderator: Annette Melville, Library of Congress, Collections Development Office
Speakers: •Susan Wyngaard, Ohio State University, *Biographical Sources on Photographers.*
•Rachel Stuhlman, International Museum of Photography at George Eastman House, *Recent Photography Periodicals—An Evaluation.*
•Amy Stark, Center for Creative Photography, University of Arizona, *Invisible Cities—A Walking Tour of Photographic Indexing Sources.*
•Annette Melville, Collections Development Office, Library of Congress, *Before the Halftone—the 19th Century Photo-Illustrated Book.*
- 8-12:15pm** **(10am-11:30am)** **USC Fine Arts Building** **Session Q: HOW CAN A WOMAN ARTIST KEEP HER NAME ALIVE?**
Pre-registration required. Buses depart from Hyatt 8am; coffee/danish at USC Art & Architecture Library 8:30am (galleries open); welcome by WCA President 9:30am. Buses depart USC 11:45am, returning to Hyatt approximately 12:15pm.
Co-sponsors: Woman's Caucus for Art and ARLIS/NA Women in Art Documentation Group

TUESDAY

- Mary Graham, The Heard Museum, Phoenix, *Native Peoples of the Southwest—Research and the Heard Museum.*
- Fraiser McConnell, The National Library Service, Papua New Guinea, *Problems in Bibliographic Control of Papua New Guinea Materials. Coffee Break.*
- Margaret Shaw, Australian National Gallery, *Aboriginal Cultures—Information and Access.*
- Cynthia Timberlake, The Bishop Museum, Honolulu, *Ethnography and Documentation of Polynesian, Melanesian, and Micronesian Cultures—Collecting and Accessibility.*

9-11pm
Rm 2208

Hospitality Suite open.



ART LIBRARIES SOCIETY OF NORTH AMERICA

*growing and fulfilling the needs
of art Librarianship
and visual resource management*

ARLIS/NA works to promote the development, good management, and enlightened use of all art libraries and visual resource collections, and to further the interests and goals of all professionals involved with the organization and retrieval of art information. Membership totals over 1,200 individuals and institutions throughout the world, with 18 chapters to support the activities and goals of the Society at the local level.

WEDNESDAY

6:30-10:30am *Registration/Information Desk open.*
Room 310 Coffee will be available.

8:30-10:30am *Sales Booth open.* Next to last chance to buy conference poster.
Room 310 Sales Booth open once more tonight, 6:30-8:30pm.
Coffee will be available.

ALL-DAY TOURS

Fee and pre-registration required.

Bus transportation from the Hyatt provided. Lunch included. Times listed are for departure from Hyatt Regency and estimated time of return. Buses will leave from Hope Street entrance.

7am-7pm

•SAN JUAN CAPISTRANO/SAN DIEGO/LA JOLLA

In San Juan Capistrano, the post-modernist Public Library designed by Michael Graves and the historic Mission (1799-1806) will be visited. Next stop is Balboa Park in San Diego, site of the 1915 Panama-California Exposition. Lunch will be followed by informal tours of the many museums here: the San Diego Museum of Art, the Timkin Art Gallery, the Museum of Photographic Arts, the San Diego Museum of Natural History, etc. The late afternoon will be spent in La Jolla with visits to the La Jolla Museum of Contemporary Art and a reception given by art book dealer Larry McGilvery.

8am-6pm

•SAN MARINO/PASADENA

A study in architectural contrast, this tour begins with a visit to the neo-classical Huntington Library and Art Gallery in San Marino. There will be time to visit the famous Huntington Gardens as well. Lunch will be served at the Japanese-inspired Craftsman-style Gamble House, designed by the early 20th century California architects, Charles and Henry Greene. The last stop of the day will be at the Art Center College of Design, a building by Craig Ellwood, who was heavily influenced by Mies van der Rohe. Wine and cheese will be served in the sculpture garden.

8:30am-7:30pm

•WILSHIRE TO WESTWOOD

The Craft & Folk Art Museum will be visited first, the home of contemporary crafts and international folk art. Across the street, west of the famous La Brea Tar Pits, is the L.A. County Museum of Art. After visiting their redesigned Ahmanson Gallery, which houses the permanent collection, you will ride through Beverly Hills to Westwood, home of UCLA. Lunch will be in the sculpture garden. After lunch, you will be free to visit the many libraries and museums on campus that may interest you, including the Wight Gallery and the Museum of Cultural History. The Dickson Art Center includes the Visual Resource Collection, the Art Library, the Elmer Belt Library of Vinciana, and the Princeton Index of Christian Art. A reception in the Faculty Center will be followed by a Suzanne Lacy performance of *The Black Madonna* in the sculpture garden.

WEDNESDAY

9am-6:30pm

•WHERE THE ARTISTS ARE (AND OTHER ART PLACES)

Some of the many murals in Santa Monica and Venice will be viewed and there will be tours of important galleries in these areas as well. Lunch will be at the Sidewalk Cafe, by the famous Venice boardwalk, and after lunch you will visit Sam Francis' studio. Across town, you will head down Melrose Avenue, stopping at Art Catalogs and looking at this exciting area—a mixture of decorators' habitat, art galleries, and newly developing punk rock/new wave scene. Turning on La Brea Avenue, you will stop at the 170 Building where you will find Artworks, an artist's books shop, and the Jan Baum, Garth Clark, and Roy Boyd Galleries. Barbara Pascal, the owner of Artworks, will serve some refreshment at the end of the afternoon. The Roy Boyd Gallery will be showing the work of Joe Fay, our poster artist.

6:30-8:30pm

Rm 310

Sales Booth open.

(Last chance to buy your conference poster.)

6-8pm

Rm 2208

Hospitality Suite open.

THURSDAY

9am-12noon
Biltmore Hotel
515 S. Olive Street

Session T: CAA/ARLIS JT. SESSION—THE ARTIST AND THE CRITIC

Moderator: Joyce Ludmer, University of California, Los Angeles

Speakers: •Seymour Howard, University of California, Davis, J.I. Winckelmann, *Father of Modern Art History or Modern Art Criticism?*

•Helene E. Roberts, Harvard University, *The Critics' Influence in the Victorian Art World.*

•Stephanie Frontz, University of Rochester, *Art Critics and The Dial in the Twenties.*

•Joanna Frueh, University of Arizona, *The Dangerous Sex—Art Language and Male Power.*

•Richard Martin, Fashion Institute of Technology,

'That Each by Observation Might Satisfy His Mind'—Many Observations in Contemporary Art Criticism.

Discussants: •Jonathan Fineberg, University of Illinois, Urbana-Champaign

•Hilton Kramer, *The New Criterion*

•Donald B. Kuspit, State University of New York, Stony Brook

1-9pm
Rm 317

Executive Board Meetings.

Open to membership on a limited-only-by-seating-available basis.

1-6pm
(1:30-5:30pm)

**J. Paul Getty Center
for the History of Art
and the Humanities**

Santa Monica

transportation provided.

Bus leaves Hyatt at 1pm

and returns at 6pm

TOWARD AUTOMATION—IMPLEMENTING STANDARDS IN VISUAL RESOURCE COLLECTIONS-A WORKSHOP

Sponsor: VRSIG

Coordinator: James M. Bower, J. Paul Getty Center for the History of Art and the Humanities

Moderator: Celine Alvey, J. Paul Getty Center for the History of Art and the Humanities

Speakers: •Elisabeth Betz Parker, Library of Congress

•Henry Millon, Center for Advanced Studies in the Visual Arts

•Marguerite D'Aprile-Smith, Art and Architecture Thesaurus Project

•Lenore Sarasan, Willoughby Associates

•Elaine Svenonius, UCLA Graduate School of Library & Information Science

ARLIS/ARIZONA-SPONSORED SIDE TRIP

ART AND ARCHITECTURE OF THE PHOENIX AREA

The ARLIS/Arizona Chapter has planned a very special art and architecture weekend in Phoenix and environs. *Pre-registration required.*

Three days of touring the art and architecture of the Phoenix area are planned, beginning Thursday afternoon with a visit to Frank Lloyd Wright's Taliesin West. Friday morning you will visit Paolo Soleri's futuristic vision, Arcosanti. Lunch will be in Tlaquepaque, patterned after the craft towns of Guadalajara. Saturday will include visits to the Phoenix Art Museum and the Rossen House. That evening, the Heard Museum will host a private evening of cocktails, western barbeque dinner, and gallery tours. Sunday morning, your visit will be capped with Sunday brunch at the Arizona Biltmore Hotel, an interpretation of Art Deco by Frank Lloyd Wright.



Stop by Booth 17...and enter our drawing for a free copy of ANCIENT ROMAN ART & ARCHITECTURE

THE MARBURGER INDEX II

A continuation—300,000 additional photographs on 3,000 fiche—of the widely acclaimed photographic documentation of art and architecture in Germany, compiled by the Bildarchiv Foto Marburg.

... this fine and incomparable archive of graphics on German art and architecture ... will provide the richest source of documentation of German art and European art in Germany yet available to scholars and historians, especially on this side of the Atlantic.

Microform Review (on the original Marburger Index)

Ten new sections, published May and November 1983-1987 \$4115*

DESCRIPTIVE INVENTORY AND INDEXES OF ART IN GERMANY

These exhaustive COM fiche indexes will finally provide total access to the complete Marburger Index.

Five sections (diaz), October 1983-1987 \$1595*

**Unless otherwise specified, prices indicated are for silver halide edition, payment on receipt of first shipment.*

CATALOGS OF THE LIBRARY OF THE CENTRAL INSTITUTE FOR ART HISTORY, MUNICH

This fiche edition of Europe's most important art libraries—covering virtually all aspects of Western art history and theory is now complete. Of particular importance are the library's collection of emblem books and its holdings in aesthetic theory, history of art, iconography, French art to 1900, and Eastern and Southern European art.

Complete set, 3 catalogs (38X) & printed guide \$4540*

**Price for silver halide edition. For diazo edition please inquire.*

CARD CATALOGS OF THE HARVARD UNIVERSITY FINE ARTS LIBRARY

A new and comprehensive microedition of the card catalogs of one of the world's largest and broadest university art libraries—with special strengths in the fields of master drawings, Italian primitives, the Pre-Raphaelites, Romanesque sculpture, Renaissance painting, French Impressionism, German Expressionism, Oriental and American art.

Complete set, 4 catalogs (38X) & printed guide \$1825*

**Price for silver halide edition. For diazo edition please inquire.*

For more information on these and other Saur titles on art and architecture, please stop by our booth. All Saur titles are now in stock in the New York office.



K.G.Saur Inc. 175 Fifth Avenue New York, N.Y. 10010 212 982-1302

If you missed the exhibit

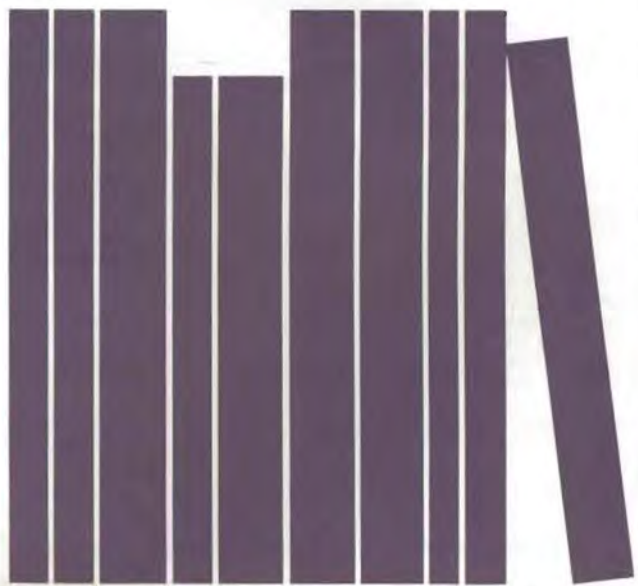
- Bauhaus
- Constructivism
- De Kooning
- Dine
- Duchamp
- Hockney
- Johns
- Matisse
- Monet
- Pop Art
- Rauschenberg
- Rothko
- Stella
- Warhol
- & others

Exhibition Catalogues
of Painting, Sculpture
& Graphics on
20th Century Artists.
Current & Out-of-print.

Send for our inventory catalogue. Mail \$1.00 to:

ART CATALOGUES

625 North Almont Drive
Los Angeles, California 90069
213 274 0160



AAUP

America 1585

The Complete Drawings of
John White
Paul Hulton
1984. \$24.95 Tr. North Carolina (and British
Museum Publications)

Art at the Service of War

Canada, Art, and the Great War
Maria Tippett
1984. \$24.95. Toronto

Great Racehorses in Art

John Fairley
1984. \$65.00 cloth. Kentucky

An Illustrated Guide to Maori Art

Terence Barrow
1984. \$15.95 paper. Hawaii

Imago Musicae

International Yearbook of Musical
Iconography
Ed. by Tilman Seebass
1985. \$40.00. Duke

Masters of Seventeenth-Century Dutch Genre Painting

Peter C. Sutton, Christopher Brown, et al.
1984. \$45.00 cloth. Pennsylvania

Modernist Painting in New Mexico, 1913–1935

Sharyn R. Udall
1984. \$50.00 cloth. New Mexico

Paintings from Books

Art and Literature in Britain, 1760–1900
Richard D. Altick
1985. \$TBA. Ohio State

Paul Klee and Cubism

Jim M. Jordan
1984. \$55.00. Princeton

Second View

The Rephotographic Survey Project
1984. \$65.00 cloth. New Mexico

Thomas Eakins

The Heroism of Modern Life
Elizabeth Johns
1983. \$42.50. Princeton

**ASSOCIATION
OF AMERICAN
UNIVERSITY PRESSES**

See these and other new and scholarly works at our exhibit booth, or
order by mail by sending check or VISA/MC number and exp. date to
AAUP, One Park Avenue, New York, NY 10016.

ADVERTISEMENT

F · A · BERNETT · INC



Rare & Scholarly Books
on the



FINE & DECORATIVE ARTS
ARCHITECTURE
ARCHAEOLOGY



2001 Palmer Avenue · Larchmont N.Y. 10538
Tel. 914 834-3026

CATALOGUES ON REQUEST

Available soon . . .

ART BOOKS

**A Basic Bibliography
of Monographs on Artists**

by

WOLFGANG FREITAG

Containing over 10,500 citations to monographs on approximately 1,800 artists in all media, this long-awaited reference book by one of the world's foremost art librarians will be an essential purchase for any library with a collection in the fine arts.

April 1985

8½ x 11

c. 375 pages

c. \$40

GARLAND PUBLISHING

136 Madison Avenue, New York, NY 10016

Major Art and Architecture Books



MATISSE

Pierre Schneider. "Now that the 'big one' has at last come off the press, Matisse emerges from it as one of the great artists of all time. This mammoth book will be read as long as people are interested in Matisse – which is to say (let us hope), forever." – John Russell, *The New York Times Book Review*. \$95

GEORGE SEGAL

Sam Hunter and Don Hawthorne. "A large, lavish, comprehensive survey of Segal's work, from paintings to evocative casts. Best of all, there are more than 400 illustrations." – *Library Journal*. "A thorough presentation and examination of the artist's career and aesthetic aims." – *Booklist*. \$75

RICHARD MEIER, ARCHITECT

Compiled by Richard Meier. Text by Joseph Rykwert. A stunningly designed, profusely illustrated documentation of the complete work of this Pritzker Prize-winning architect. Hardcover, \$50. Paper, \$35

JAMES STIRLING: Buildings and Projects

Edited by Peter Arnell and Ted Bickford. This handsome monograph, the most complete ever published on the architect, documents virtually all of Stirling's projects – built and unbuilt. Hardcover, \$45. Paper, \$29.95

KLEE AND NATURE

Richard Verdi. An introduction to the range and depth of Klee's insights into the secrets of nature. The beautiful illustrations comprise a large number of rarely reproduced works, in addition to familiar masterpieces. Hardcover, \$37.50. Paper, \$25

THE AGE OF CARAVAGGIO

Mina Gregori and Keith Christiansen. A notable study of an artist and his period, bringing together many major works of the great 16th century Italian painter and outstanding examples from the oeuvre of the painters he influenced. Metropolitan Museum of Art/Rizzoli. \$50

NEIL WELLIVER

Introduction by John Ashbery. Text by Frank Goodyear. The 69 beautifully reproduced paintings in this book (60 in color) convey the rich and spellbinding world of this American artist's work, with a text that provides a retrospective view of his career. \$60

ART OF OUR TIME: The Saatchi Collection

Each volume in this 4-volume series on the unparalleled Saatchi Collection in London contains approximately 100 color plates plus essays by writers including such major critics as Peter Schjeldahl, Hilton Kramer and Robert Rosenblum. Paper, \$27.50 per volume.

712 Fifth Avenue **RIZZOLI** NEW YORK New York 10019

Now at Harvard, The Metropolitan Museum of Art, Yale, Stanford, The National Gallery, Cornell, New York University School of the Arts, Wesleyan, Trinity University of California and many more schools and institutions of learning...

**ARCHITECTURE, INTERIORS AND FURNITURE
2800 BC — 1975**

In eight volumes, 1867 slides
550 pages of commentaries

*2 unique slide presentations
complete courses of study and reference works
"magnificent, the highest quality, unusual"*

**HISTORY OF COSTUME
3100 BC — 1930**

In five volumes, 1188 slides
350 pages of notes and commentaries



Slide Presentations, Publishers, Inc.

175 Fifth Avenue, Suite 1101

New York, NY 10010

(212) 677-2200

VOLUNTEERS

Abstracts

Brent Maddox
Nancy Pistorius

Exhibits

Lois Benson-Talley
Deborah Boone
Marion Buzzard
Barbara Davis
Henry DuBois (Coordinator)
Laine Farley
Barbara Frank
Richard Halvorsen
Alison Holt
Brent Maddox
Susan Malkoff-Smith
Ray Reece
Karin Richardson
Christine Smith
Nancy Strowbridge
Evy White

Fundraising

Lois Benson-Talley

Guidebook

Chris Ackema (Coordinating Assist.)
James Bower (Coordinator)
Richard Halvorson
Gretchen Karl
Susan Malkoff-Smith
Ray Reece
Suzanne Shellaby
Elizabeth Spatz

Guidebook Sales at CAA

Christine Ackema
Joan Benedetti
Barbara Frank (Coordinator)
Alison Holt
Giovanna R. Jackson
Joyce Ludmer
Susan Malkoff-Smith
Pat Moore
Christine Smith
Nancy Strowbridge

Hospitality Suite

Christine Ackema
Nancy Andrews
Carl Baker
James Bower (Coordinator)
Kaycee Hale
Richard Halvorsen
Elizabeth S. Herman
Gretchen Karl

Brent Maddox
Nancy McCauley
Susan Malkoff-Smith
Jane Nelson
Laurie Reese
Karin Richardson
Nancy Strowbridge
Evy White

Hotel Selection

Joan Benedetti
Susan Malkoff-Smith

Local Advertising

Jennifer Rose (Coordinator)
James M. Bower

L.A. Bibliography

Joan M. Benedetti
Arlene Noble (Compiler)

Local Publicity

Marion Buzzard

Mail Art Exhibit

Helene Kosher (Curator)
Selma Lokitz
Clive Phillipot
Maryly Snow

Poster

Ann Edgerton
Carl Baker (Coordinator)
Joe Fay (Artist)
Alison Holt

Registration/Information Desk

Christine Ackema
Nancy Andrews
Carl Baker
Joan Benedetti
Lois Benson-Talley
L. Clarice "Cal" Davis
Marva Felchlin
Eleanor Hartman (Coordinator)
Elizabeth S. Herman
Gretchen Karl
Ray Anne Lockard
Nancy McCauley
Bethany Mendenhall
Patricia Moore
Lindy Narver
Laurie Reese
Margaret Rose
Chris Smith
Laurie Whitcomb
Barbara Woolsey

Sales Booth

Christine Ackema
Carl Baker
Marion Buzzard
Barbara Frank
Jane Hagan
Elizabeth S. Herman
Alison Holt
Gretchen Karl
Laurie Reese
Chris Smith
Shirley Solvick
Nancy Strowbridge (Coordinator)
Evy White

Signage

Betsy Galloway (Coordinator)

Special Projects

Susan Malkoff-Smith (Coordinator)

Tours

Nancy Andrews
Deborah Boone (Coordinator)
Justine Clancy
Peggy Cribbs
Mary Crouch
Betsy Galloway
Sandra D. Garber
Eleanor Hartman
Judy Hoffberg
Joan Hugo
Helene Kosher
Joyce Ludmer
Kathy Martin
Larry McGilvery
Jeffrey Mulvaney
Ray Reece
Jennifer Rose
Christine Smith
Diana Wilson

Transportation

Rossana Hemerick
Lindy Narver
Nancy Smith (Coordinator)

Thirteenth Annual Conference **Program**/Art Libraries Society of North America/Los Angeles/1985