

1983 February 12-17  
Philadelphia

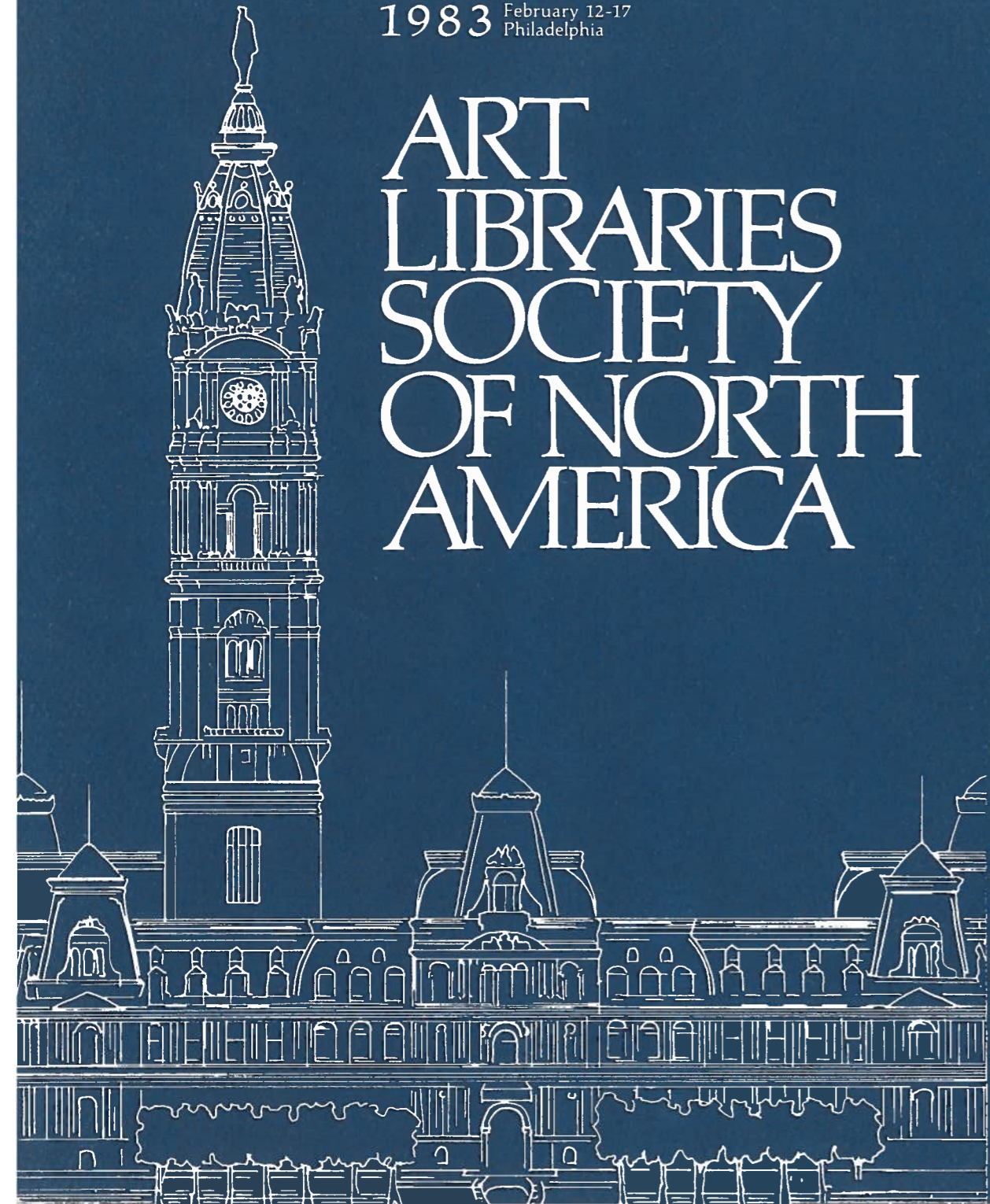
# ART LIBRARIES SOCIETY OF NORTH AMERICA

SATURDAY / SUNDAY

SUNDAY / MONDAY

MONDAY / TUESDAY

TUESDAY / WEDNESDAY



List of

## EXHIBITORS

ABC-Clio  
ARLIS/NA  
Abbeville Press  
Alpine Fine Arts Collection, Ltd.  
American Association for State and Local History  
Amon Carter Museum Publications  
Ars Libri, Ltd.  
Astro Artz  
The Art Book Company  
Blackwell North America, Inc.  
Centro Di  
Chadwyck-Healey, Inc.  
Clearwater Publishing Company, Inc.  
Faber & Faber, Inc. Publishers  
Garland Publishing, Inc.  
G.K. Hall & Co.  
Linda Honan Art Books/Honart Slides  
Indiana University Press  
Inter-American Art Consultants  
International Art Market  
International Exhibitions Foundation  
Kodansha International  
Leonard's Price Index  
Lodima Press  
Meckler Publishing  
Mindata Ltd. Microform Publications  
Museum Publications  
Periodical Display Service  
RILA  
Rizzoli International Publications  
C.G. Rosenberg & Co.  
Rosenthal Art Slides  
Royal Ontario Museum Publications  
Sandak Inc.  
Stained Glass  
Daniel Tucker Bookworks  
Turner Subscription Agency  
UMI Research Press  
Umbrella  
University of Chicago Press  
University Products, Inc.  
John F. Warren Bookseller  
Andrew Washton Fine Art Books  
H.W. Wilson Company  
Woman's Art Journal  
Worldwide Books  
Yale University Press

The eleventh annual conference of the

# ART LIBRARIES SOCIETY OF NORTH AMERICA

February 12-17, 1983  
Philadelphia

## GENERAL INFORMATION

### Pre-Registration

Pre-registration is required for all special events such as workshops, tours, membership luncheon, and some receptions. Tours are filled on a first-come, first-served basis, and since space is limited in most cases, we advise early pre-registration. Tickets for all events requiring pre-registration will be included in the Registration Packets which you may pick up at the Registration/Information Desk upon your arrival.

If tickets remain for any special events, they will be available at the Registration/Information Desk. Please keep in mind that the ARLIS/NA Executive Board has established the following policy: Any guests of conferees are encouraged to register for the conference as a whole. Unregistered guests will be permitted to join tours and special events on a space-available basis only immediately prior to the event, after all registered conferees have been accommodated.

Registration fees include attendance at all sessions, the Convocation and Reception at the Philadelphia Museum of Art, the Sunday evening reception in honor of new ARLIS/NA members and first-time conference attendees, and access to the exhibits.

### On-Site Registration

For those unable to pre-register, on-site registration will begin on Friday, February 11 at 6 P.M. and will end on Wednesday, February 16 at 10 A.M. A late charge of \$10.00 will be added to the basic registration fee for on-site registration.

### Refunds

Requests for refund of registration fees **must have been received in writing by February 1, 1983** by ARLIS/NA Executive Secretary Pamela J. Parry. A \$5.00 processing fee will be deducted from each refund.

SATURDAY / SUNDAY

SUNDAY / MONDAY

MONDAY / TUESDAY

TUESDAY / WEDNESDAY

If you decide during the conference not to participate in a special event for which you pre-registered, we urge you to bring your ticket to the Registration/Information Desk to be resold. This will help ARLIS/NA financially and will enable another conferee to attend the event.

### Headquarters Hotel

The Franklin Plaza Hotel, at 17th and Race Streets, is a new hotel built specifically with conferences in mind. It is conveniently located near the major cultural institutions of Philadelphia and near the center-city shopping area. Its meeting rooms are accessible by escalator and speedy elevator service. Within the hotel are several restaurants, open generous hours and appropriate for a variety of budgets. Hotel guests are entitled to use the recreational facilities of the hotel, including indoor swimming pool, racquet ball and squash courts, tennis courts, sauna, jogging track and nautilus room. Convention rates are being offered to ARLIS/NA members. Check-out time is 1 P.M. A luggage checking facility is available through the bell captain's desk.

*PLEASE NOTE: There are several hotels in Philadelphia using both "Franklin" and "Plaza" in their names (i.e., the Franklin Motor Inn and the Plaza). Keep in mind that our hotel is the Franklin Plaza, at 17th and Race Streets.*

### Transportation to and from the Philadelphia International Airport

The Yellow Limousine Service, serving all Philadelphia hotels, leaves from the airport every half hour on the quarter hour, and leaves the Franklin Plaza for the airport every half hour on the quarter hour as well. At the airport there is a limousine stand outside each of the air terminals. The fare is \$4.75 each way.

There is also an airport express bus operated by SEPTA, Philadelphia's public transportation system. It operates to and from 30th Street Station, Philadelphia's main railroad station,

seven days a week between the hours of 6:15 A.M. and 10:45 P.M. It leaves in either direction every half hour on the quarter hour. The fare is \$2.25 each way.

Taxi fare from the airport to the Franklin Plaza Hotel is approximately \$11.00. Taxi fare from 30th Street Station to the hotel is approximately \$2.50.

### Other Transportation to and from Philadelphia Center City

Amtrak offers frequent train service to and from Philadelphia on its northeast corridor trains, and on trains from Chicago and the south and southwest, all arriving at and departing from 30th Street Station. Both Greyhound and Trailways service Philadelphia. Both bus terminals are within walking distance of the Franklin Plaza Hotel, Greyhound at 17th and Market Streets, Trailways at 13th and Arch Streets.

If you drive to Philadelphia, the Franklin Plaza Hotel has an underground garage for the use of hotel guests. The fees are \$3.50 per day on Friday, Saturday, and Sunday, and \$6.50 per day during the week.

### Abstracts

Each conference registrant receives a copy of the abstracts. They are arranged alphabetically by the names of the speakers, with an index by session (also designated alphabetically) in the back. Additional copies are available at the Registration/Information Desk for \$3.00.

### Program Terminology

*SIG:* Special Interest Group

*TOL:* Type of Library Group

*Lecture:* Person or persons speaking from a podium

*Panel discussion:* Group of speakers who speak and react and who are introduced and coordinated by a moderator

*Discussion group:* Small group of participants

holding a relatively unstructured discussion with appointed moderator

*Workshop:* A program in which the participants receive materials which they use to learn techniques/processes in a highly structured session

*Business meeting:* A session with an agenda led by a moderator for the purpose of accomplishing society business

### Exhibits

Exhibits will open in the Pacific Hall of the hotel on Monday, February 14, at 5 P.M., with a wine reception and remain open until 8 P.M. that evening. They will re-open on Tuesday, February 15, from 10 A.M. to 2 P.M. and from 4-7 P.M. Exhibitors will include publishers, book dealers, visual resources suppliers; they welcome your comments and questions, so visit them often during the conference.

### Registration/Information Desk

The schedule for the Registration/Information Desk is printed in the conference schedule which follows. We will provide bulletin boards to serve as information centers and to hold messages both personal and professional. Members of the Delaware Valley and New Jersey ARLIS/NA chapters will staff the Registration/Information Desk and will help you with tourist, transportation, and general information about the conference and Philadelphia. Please do not hesitate to bring your questions to our "staff" of able volunteers.

### Weather

The Farmer's Almanac promises us a mild week for our conference, but just to be safe, dress in removable layers when you go out. Traditionally February is a very cold month here, and that farmer may fool us!

### Smoking and Safety

Smoking is not permitted in sessions unless voted otherwise by the majority of the

participants of each session just prior to the beginning of that session. There are lounge areas located conveniently near meeting rooms where conferees may smoke.

Philadelphia is a large urban center, with its share of urban problems. We urge you to be sensible as you explore the city. At night, walk in groups and only in well-populated areas. Take taxis (you may ride in groups), and be alert to the possibility of pickpockets in crowded places. If you exercise proper caution, you should have no trouble.

### 1983 ARLIS/NA Conference Committee

Eileen Markson, Bryn Mawr College  
*Chairman*

Jean Shaw Adelman, University of Pennsylvania  
Marjorie Bilk, Bryn Mawr College  
Carol W. Campbell, Bryn Mawr College  
Susan A. Davi, University of Delaware  
Barbara Sevy, Philadelphia Museum of Art  
Neville Thompson, Winterthur Museum  
Irena Uknalis, Free Library of Philadelphia

### ARLIS/NA Executive Board 1982

*Chairman:* Caroline Backlund, National Gallery of Art  
*Vice-Chairman/Chairman-Elect:* Nancy Allen, Museum of Fine Arts, Boston

*Secretary:* Barbara Sevy, Philadelphia Museum of Art

*Treasurer:* Jeffrey L. Horrell, Dartmouth College

*Past Chairman:* Karin Muller, Art Institute of Chicago

*Regional Representatives:*

East: Janis Ekdahl, Museum of Modern Art

Midwest: Nancy Harvey, Chicago Public Library

West: Nancy J. Pistorius, University of New Mexico

Canada: Loren R. Singer, Concordia University

*Executive Secretary:* Pamela J. Parry

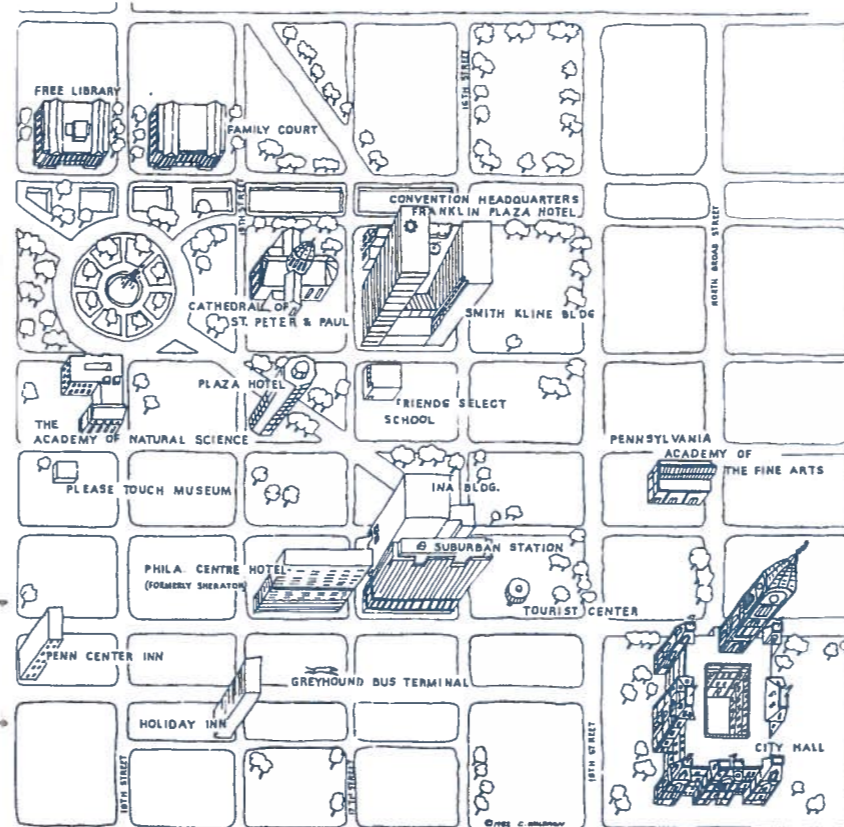
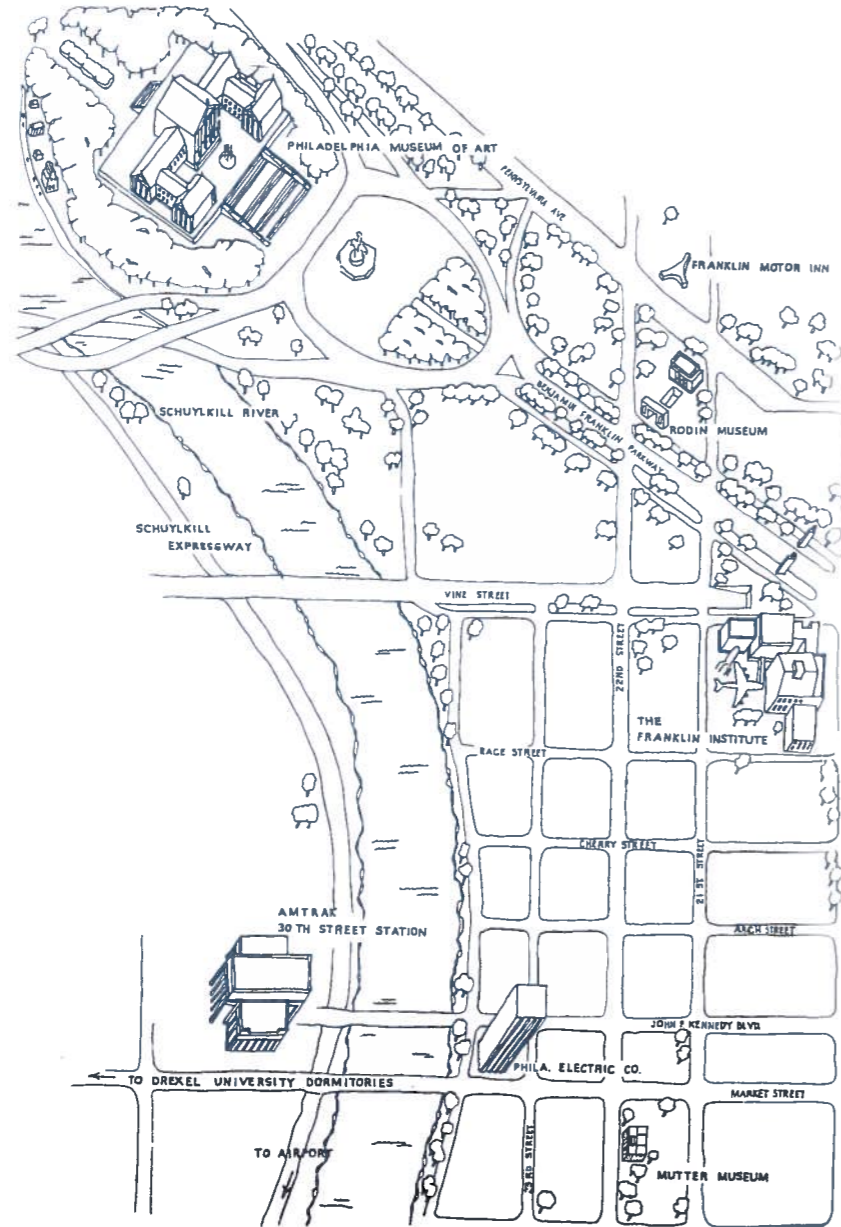
SATURDAY / SUNDAY

SUNDAY / MONDAY

MONDAY / TUESDAY

TUESDAY / WEDNESDAY

# HOTEL AND PARKWAY MAP



SATURDAY / SUNDAY

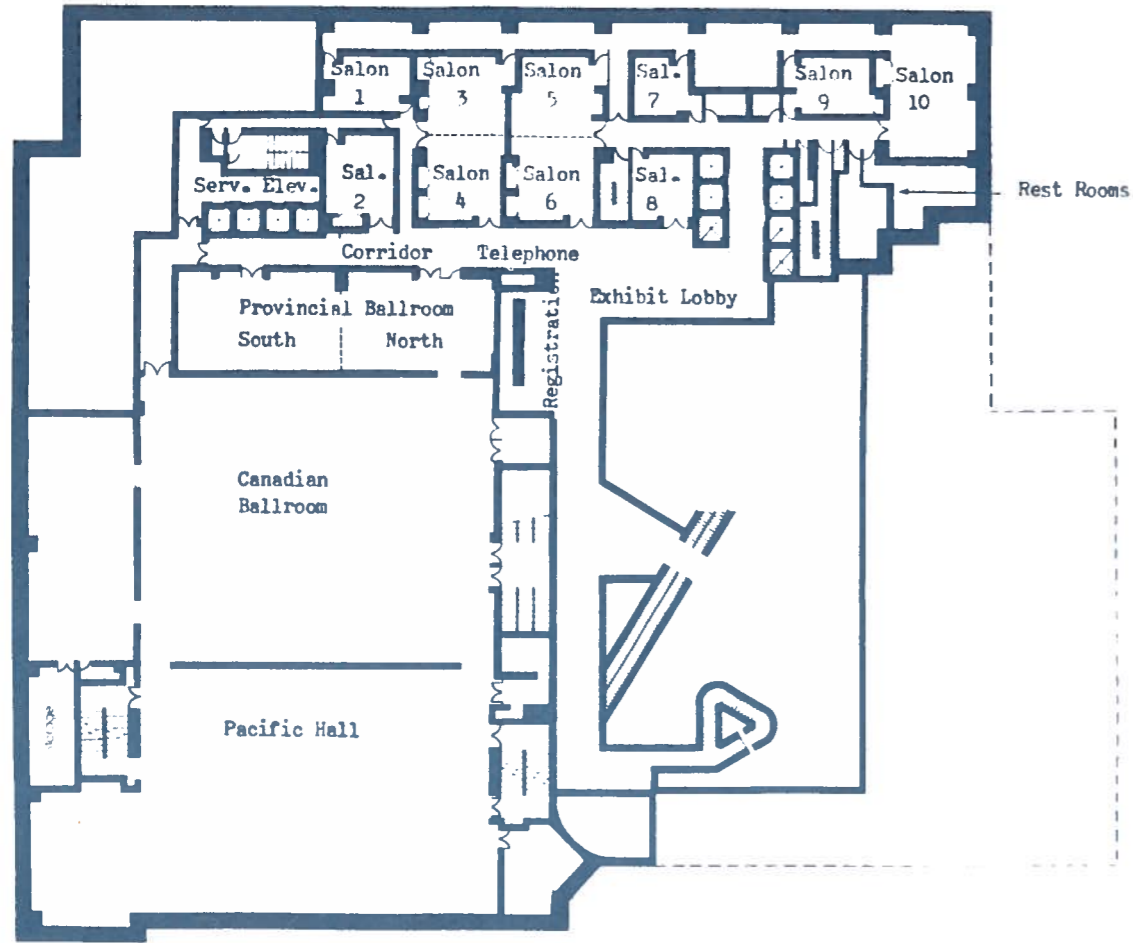
SUNDAY / MONDAY

MONDAY / TUESDAY

TUESDAY / WEDNESDAY

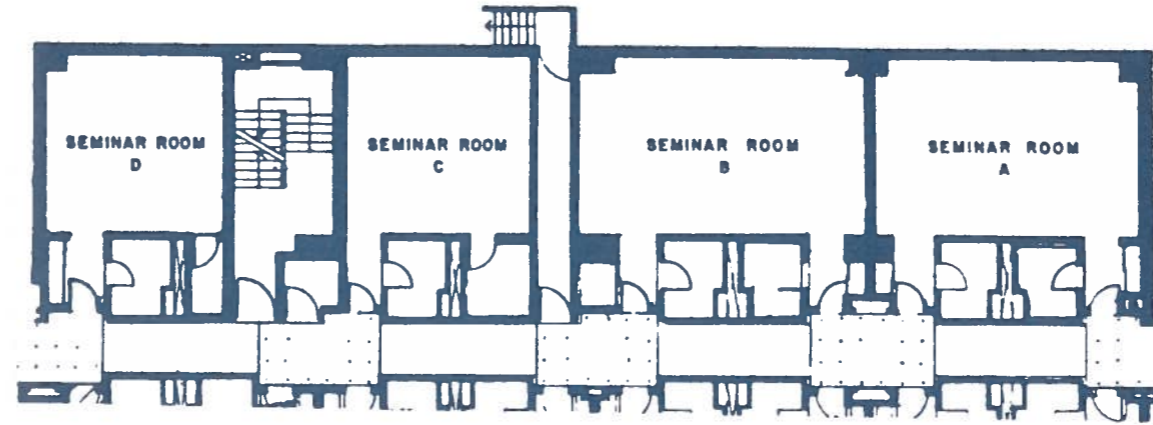
# FRANKLIN PLAZA HOTEL

## Mezzanine Level Floor Plan

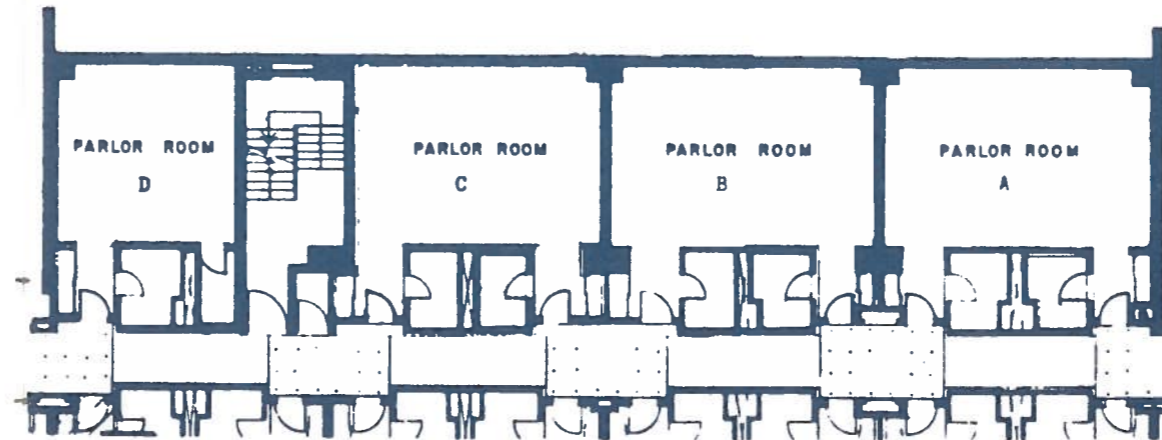


# FRANKLIN PLAZA HOTEL

## First and Second Floors: Plan



1st floor plan



2nd floor plan

SATURDAY / SUNDAY

SUNDAY / MONDAY

MONDAY / TUESDAY

TUESDAY / WEDNESDAY

# Magnificent Books on Art and Photography

## RUFINO TAMAYO

Jacques Lassaigne. Essay by Octavio Paz. A magnificently illustrated, comprehensive monograph on Tamayo, internationally recognized as the most outstanding living Mexican artist, with an interpretive essay by Spain's great writer, Octavio Paz. The 250 sumptuous full-color illustrations reveal how Tamayo blends folk themes with elements of Cubism, Expressionism and Surrealism. 304 pages. 10"x11 1/2". 304 illus., 250 in color. \$75

## THE ART OF THE AZTECS

Henri Stierlin. This profusely illustrated volume offers a fresh assessment of the complex Aztec civilization through a wide-ranging study of the forms and styles of Aztec art and architecture. Covers the period from 1500 B.C. to the arrival of the conquistadores in the early 16th century. 208 pages. 9 1/2"x12". 270 illus., 220 in color. \$50

## FRITZ SCHOLDER

Texts by Joshua C. Taylor, William Peterson, Rudy H. Turk, R. Andrew Maass. Introduction by Fritz Scholder. A master of many media—sculpture, drawing, lithography and engraving—Fritz Scholder is one of America's outstanding contemporary artists. This profusely illustrated volume offers an overview of his powerful art, which is represented in more than 100 major museums throughout the country. 296 pages. 10"x11 1/4". 371 illus., 123 in color. \$65

## BERLIN 1910-1933

Texts by Eberhard Roters, Janos Frecot, Sonja Günther, Joachim Heusinger von Waldegg, Ulrich Gregor, Arno Paul. Radical upheavals in Germany from 1910-1933 inspired a notoriously decadent "big city art," expressed in theatre, architecture, film, painting and sculpture. This fascinating study by a team of experts explores all of these areas through the works of Grosz, Kirchner, Kokoschka, Otto Wagner, Fritz Lang, Brecht, dozens more. 268 pages. 9"x10". 300 illus., 60 in color. \$50 until 12/31/82, \$60 thereafter.



712 Fifth Avenue **RIZZOLI** NEW YORK New York 10019

## THE HAN DYNASTY

Michèle Pirazzoli-t'Serstevens. An important, engrossing study of one of the most exciting periods in the history of civilization, the Han Dynasty, 206 BC to 220 AD, focusing on the dynamic and vigorous art of the period. Reproductions of sumptuous jades, bronzes, lacquers and jewelry illustrate this carefully researched history, based on new data not previously available in the West. 224 pages. 9"x11". 150 illus., 30 in color. \$50

## PHOTOGRAPHY: History of an Art

Jean-Luc Daval. An important, well-written, profusely illustrated volume that is not only a history of photography from its invention in 1839 to the present but also a lucid discussion of photography as a true art form. The works of the masters—Daguerre, Brady, Adams, Muybridge, Stieglitz, Steichen, Capa and dozens of others—are juxtaposed with the works of the great painters who were their contemporaries. Skira/Rizzoli. 272 pages. 9 1/2"x13 1/4". 120 illus., 90 in color. \$60

## RODCHENKO PHOTOGRAPHY

Alexander Lavrentjev. Written by Rodchenko's grandson, this book includes the most important photographs of the brilliant Russian avant-garde artist who became one of the most innovative of 20th-century photographers. It fills a gap in the history of photography and helps trace Rodchenko's influence on a generation of photographers, including Man Ray and Maholy-Nagy. 140 pages. 9"x10 1/2". 162 illus. \$25

## CUBISTS AND CUBISM

Pierre Daix. This sumptuously illustrated volume presents a revised history of Cubism based upon important research of the past two decades, including the revelation of many of Picasso's early works and the rediscovery of key paintings by Derain and Braque. The survey chronicles all the major events in the movement from its beginning in Paris in 1907 up through the present day. Skira/Rizzoli. 176 pages 12"x13 1/2". 265 illus., 90 in color. \$65

## ANNOUNCING

A Special Feature from the Art Libraries Society of North America (ARLIS/NA) Bulletin, ART DOCUMENTATION, on:

## WOMEN ARTISTS: A RESOURCE AND RESEARCH GUIDE

Paula L. Chiaromonte, Editor

The scope of this information guide encompasses both historical and contemporary women artists. It features print and non-print formats as well as organizations. Also included are articles on exhibition catalogs, galleries, and performance art.

Contents of the 24-page publication include:

### ORGANIZATIONS

- \*\*Educational
- \*\*Professional
- \*\*Publishers
- \*\*Archives
- \*\*Libraries

### NON-PRINT RESOURCES

- \*\*Slides
- \*\*Film
- \*\*Video
- \*\*Oral History
- \*\*Galleries
- \*\*Performance Art

### PRINT RESOURCES

- \*\*Directories
- \*\*Biographical Indexes & Dictionaries
- \*\*Encyclopedias
- \*\*Bibliographies
- \*\*Databases
- \*\*Books
  - historical surveys
  - contemporary criticism
  - architecture & planning
- \*\*Exhibition Catalogs
- \*\*Government Documents
- \*\*Periodicals
  - journals, current
  - journals, ceased
  - journals, special issues
  - newsletters, current

TO: WOMEN ARTISTS: A RESOURCE AND RESEARCH GUIDE  
c/o ARLIS/NA, 3775 Bear Creek Circle, Tucson AZ 85749

I wish to order \_\_\_ copies of WOMEN ARTISTS at \$3.50 per copy (\$4.00 if invoice is required; add \$1.00 for postage outside the U.S.)

My check or money order (in U.S. funds) payable to ARLIS/NA is enclosed.

Please invoice me.

Name: \_\_\_\_\_

Address: \_\_\_\_\_

SATURDAY / SUNDAY  
SUNDAY / MONDAY  
MONDAY / TUESDAY  
TUESDAY / WEDNESDAY

# American Art in The Newark Museum

Painting, Sculpture and Drawings



John Singleton Copley,  
*Mrs. Joseph Scott*, ca. 1765



Frederic Remington,  
*Trooper of the Plains*

At last, the wealth of paintings and sculpture in The Newark Museum's famous collection is fully revealed in a new illustrated catalogue. The collection ranges from the 18th through 20th centuries, with strong coverage of folk art and 19th-century works, making this volume an important research tool and reference work for collectors and scholars. Lists over 1,600 paintings and drawings and 300 sculptures.

"An eloquent affirmation of the quality of Americana that Newark has acquired over the years." - *The New York Times*

8 7/8" x 10 1/4", 428 pages, 44 color and 450 b&w illustrations. Cloth \$24.95; paper \$17.95, plus postage and handling \$2.00 per book. Library and resale discounts where applicable.

See our book in the Periodical Display Service exhibit at the ARLIS/NA Annual Conference.

Name \_\_\_\_\_

Address \_\_\_\_\_

City \_\_\_\_\_ State \_\_\_\_\_ Zip \_\_\_\_\_

Telephone \_\_\_\_\_

I would like to order \_\_\_\_\_ copies of **American Art in The Newark Museum**. Make check or money order payable to The Newark Museum and return to Publications Department, P.O. Box 540, Newark, N.J. 07101.

## 19th Century British and Continental Drawings and Watercolors

Wednesday, February 23 at  
10:00 a.m. and 2:00 p.m.

Catalogue "Christopher," \$10, \$12 by mail.

A specialized sale of Architectural Drawings is scheduled for the Spring of 1983. (Consignment Deadline: Late March, 1983). For viewing times and further information, please contact Kathleen Laughlin Harwood at 212/546-1102. For catalogue subscription information, please write Christie's Catalogue Department, 21-24 44th Avenue, Long Island City, N.Y. 11101.



Joseph Mallord William Turner, *Cassiobury, West Front*, circa 1808, watercolor, 9 3/16 x 7 13/16 in.

 **Christie's**  
502 Park Avenue, New York, NY 10022 212/546-1000

SATURDAY / SUNDAY

SUNDAY / MONDAY

MONDAY / TUESDAY

TUESDAY / WEDNESDAY

TUESDAY / WEDNESDAY  
 MONDAY / TUESDAY  
 SUNDAY / MONDAY  
 SATURDAY / SUNDAY

ANNOUNCING

OCCASIONAL PAPERS OF THE ART LIBRARIES SOCIETY OF NORTH AMERICA No. 1

# AACR 2 GOES PUBLIC

TUCSON, AZ, FEBRUARY 20, 1982. The Art Libraries Society of North America (ARLIS/NA) announces publication of the first in a series of Occasional Papers: AACR2 GOES PUBLIC. The volume features four papers presented at a panel discussion sponsored by the Cataloging and Indexing Systems Special Interest Group at the 1981 ARLIS/NA conference in San Francisco.

The ARLIS/NA Executive Board and the Publications Committee have decided to publish these papers now, because the problems, analyses, and solutions they present continue to be relevant. AACR2 is with us to stay. Catalogers, reference librarians, library patrons and bibliographers must constantly cope with its effects. The library catalog is the key to a library's collection, and the essays in AACR2 GOES PUBLIC offer sound guidance.

CONTENTS

- Karen Muller: PREFACE
- Daniel A. Starr: BEHIND AACR2: AN INTRODUCTION FOR THE REFERENCE LIBRARIAN
- Ferria Olin: COPING WITH THE CHICKEN LITTLE SYNDROME: AACR2 AND CATALOGS
- Patricia J. Barnett: DESIGNING AACR2 INTO OUR CATALOGS
- Bonnie Postlethwaite: THE IMPACT OF AACR2 ON SERIALS PROCESSING: BEYOND CATALOGING

ISSN 0730-7160

TO: AACR2 GOES PUBLIC, c/o Pamela Parry, ARLIS/NA, 3775 Bear Creek Circle,  
 Tucson, AZ 85715

I wish to order \_\_\_ copies of AACR2 GOES PUBLIC at \$5.00 per copy. Outside North America add \$2.00 for postage.

( ) My check or money order (in U.S. funds), payable to ARLIS/NA is enclosed.

( ) Please invoice me (for institutional orders only).

NAME:

ADDRESS:

Painters  
 Printmakers  
 Draughtsmen  
 Conceptual Artists  
 Performance Artists  
 Assemblage Artists  
 Photographers  
 Textile Artists  
 Glass Artists  
 Video Artists  
 Merismitis  
 Sculptors  
 Jewelers

## 1982 INTERNATIONAL DIRECTORY OF ARTISTS EXHIBITING

No other artists directory gives you this much coverage:

- International scope • over 10,000 exhibiting artists • updated annually • alphabetical arrangement by artist's name • indexed by nationality and discipline • biographical information • exhibit information • directory of museums and galleries

Two-volume set \$65.

Vol. 1: Painters, Printmakers and Draughtsmen, 1982. 7,800 entries. 500pp. Index. ISBN 0-903450-615 Hardcover \$44.75

Vol. 2: Sculptors, Photographers, Others, 1982. 3,500 entries. 250pp. Index. ISBN 0-903450-623 Hardcover \$28.75

ABC CLIO Dept. 22, Box 4397 Santa Barbara, CA 93103

Clip coupon and mail to:

ABC CLIO Dept. 22, Box 4397 Santa Barbara, CA 93103

Individuals please add \$1.75 for postage and handling. Calif. residents please add 6% sales tax.

Yes, please enter my

standing order to  
 IDEA—15% discount

or send me

- \_\_\_ copies of Volume 1 @ \$44.75 ea.
- \_\_\_ copies of Volume 2 @ \$28.75 ea.
- Both volumes for \$65 - save \$4.50!
- My check or purchase order is enclosed.
- Charge this to my  VISA  MasterCard

Acct. no. (please print all digits)

Signature

Expires

Name

Institution

Address

City, State, ZIP



## SCHEDULE

### Registration/Information Desk Hours

Friday, February 11: 6-8 P.M.  
 Saturday, February 12: 10 A.M.-8 P.M.  
 Sunday, February 13: 8:30 A.M.-3:30 P.M.; 6:30-8 P.M.  
 Monday, February 14: 8:30 A.M.-8 P.M.  
 Tuesday, February 15: 8:30 A.M.-NOON  
 4-8 P.M.  
 Wednesday, February 16: 8-10 A.M.

### FRIDAY, FEBRUARY 11

1-6 P.M. Salon 1 **ARLIS/NA Executive Board Meeting** (open to membership on a limited-only-by-seating-available basis)  
 6-8 P.M. Mezzanine **Registration/Information Desk Open**

### SATURDAY, FEBRUARY 12

8 A.M.-Noon Salon 1 **ARLIS/NA Executive Board Meeting** (open to membership on a limited-only-by-seating-available basis)  
 9 A.M.-12:30 P.M. **Tour of Barnes Foundation** (limited to 25 by pre-subscription; see Summer 1982 issue of *Art Documentation*.) **Pre-registration required. Admission tickets in Registration Packets.**  
 9 A.M.-NOON Salon 3/4 **Workshop: Conservation and Preservation of Library Materials**  
 Workshop Leaders:  
 Susan G. Swartzburg, Rutgers University  
 Abby A. Shaw, Conservation Center for Art and Historic Artifacts  
 Doris Freitag, Harvard University  
 Robert De Candido, New York Public Library  
 Helga Borck, New York Public Library  
**Pre-registration required. Admission tickets in Registration Packets.**  
 10 A.M.-8 P.M. Mezzanine **Registration/Information Desk Open**  
 1:30-4:30 P.M. **Tour of Barnes Foundation** (limited to 25 by pre-subscription; see Summer 1982 issue of *Art Documentation*.) **Pre-registration required. Admission tickets in Registration Packets.**  
 2-5 P.M. Salon 3/4 **Workshop: Conservation and Preservation of Library Materials**  
 Same as session from 9 A.M.-NOON listed above. **Pre-registration required. Admission tickets in Registration Packets.**  
 6-10 P.M. Salon 1 **Art and Architecture Thesaurus Advisory Committee Meeting**  
 Moderator: Eileen Fry, Indiana University

8:30 A.M.-3:30 P.M.  
 6:30-8 P.M. Mezzanine  
 9-11 A.M. Parlor A  
 10 A.M.-NOON Parlor B  
 Parlor C  
 Parlor D  
 10-11 A.M. Seminar A  
 Seminar D  
 Salon 8  
 11 A.M.-NOON Seminar A  
 Seminar D  
 Salon 8

11:30 A.M.  
 1-3:30 P.M.  
 1:30 P.M.  
 1-3:30 P.M.

1-3 P.M. Provincial North

4-6:30 P.M.

## SUNDAY, FEBRUARY 13

**Registration Information Desk Open**  
**Publications Committee Business Meeting**  
**Fundraising Committee Business Meeting**  
**Education Committee Business Meeting**  
**Membership Committee Business Meeting**  
**Cataloging Advisory Committee Business Meeting**  
**Gerd Muehsam Award Committee Business Meeting**  
**Wittenborn Award Committee Business Meeting**  
**Standards Committee Business Meeting**  
**Nominating Committee Business Meeting**  
**International Relations Committee Business Meeting**

### Local Tours and Visits

Rosenbach Museum and Library Visit  
 Architectural Tour of Philadelphia  
 Tour Leader: Sandra Tatman, The Athenaeum, Philadelphia  
 Rosenbach Museum and Library Visit  
 Fairmount Park Trolley Tour

**Pre-registration required for all local tours and visits listed above. Admission tickets with instructions on departure points and walking directions in Registration Packets.**

### Session A: Data Bases and the Fine Arts Library

Sponsor: Public TOL  
 Moderator: William J. Dane, Newark Public Library  
 Speakers:  
 George Lewicky, *Art Index. Art Bibliography Source: the Art Index.*  
 Judith L. Brown, *ARTbibliographies Modern. Art Bibliography Source: ARTbibliographies Modern.*  
 Randolph E. Hock, *DIALOG Information Retrieval. Unity and Diversity in On-line Data Bases.*  
 Roger Williams, Institute for Scientific Information. *Institute for Scientific Information: Data Bases for Art Libraries.*  
 Elizabeth A. DeMarco, Onondaga Co. Public Library (Syracuse, New York). *Data Base Searching at Onondaga Co. Public Library; Advantages for the Art and Music Department.*  
 Barbara Sevy, Philadelphia Museum of Art. *AVERY and SCIPPIO: Two Data Bases of the Research Libraries Information Network.*  
 Paula Baxter, State University of New York, Purchase. *Using an Art Data Base in the Academic Library.*

### CONVOCATION AND RECEPTION AT PHILADELPHIA MUSEUM OF ART

Convocation in Van Pelt Auditorium, followed by Reception in the Museum's East Foyer. Welcome by Caroline Backlund, ARLIS/NA Chairman. Presentation of Wittenborn and Muehsam awards.

*continued*

SATURDAY / SUNDAY

SUNDAY / MONDAY

MONDAY / TUESDAY

TUESDAY / WEDNESDAY

Keynote address: Howell J. Heaney, recently retired Rare Book Librarian of the Free Library of Philadelphia.

ARLIS/NA conferees will be transported to Convocation by bus from the Franklin Plaza Hotel beginning at 3:30 P.M. from the 17th Street exit of the hotel. Participants in the Architectural Tour of Philadelphia and the Fairmount Park Trolley Tour will be deposited at the Philadelphia Museum of Art at the termination of their tours and thus do not need to return to the hotel before Convocation unless they wish to. **PLEASE WEAR YOUR ARLIS/NA BADGES TO CONVOCATION FOR ADMISSION TO THE MUSEUM AT 4 P.M.**

Buses returning conferees to the hotel will begin loading at the west entrance of the Philadelphia Museum of Art at 6:30 P.M.

**PLEASE NOTE:** There is no admission charge until 1 P.M. at the Philadelphia Museum of Art on Sundays. If you go to visit the Museum after 1 P.M., there is an admission charge of \$2.50.

8-10 P.M. Provincial North

**Session B: New Reference Tools in Progress — 1983**

Sponsor: Academic TOL

Moderator: Stephanie Frontz, University of Rochester

Speakers:

Mary Schmidt, Princeton University. On the *Index to 19th Century Art Journals*.

Janice Meagher, G.K. Hall, Boston. On G.K. Hall's *Reference Publications in Art History*.

Ray Smith, Bookdealer, New Haven. On the *Annotated Bibliography of American Cartoon Books to 1955*.

Virginia Jackson, Managing Editor. On the *Selected Art Museums of the World*.

Jocelyn Penny Small, Rutgers University. On the *Lexicon Iconographicum Mythologiae Classicae*.

8-10 P.M. Provincial South

**Session C: Fundraising for Museum Libraries**

Sponsor: Museum TOL

Moderator: Amy Navratil Ciccone, The Chrysler Museum

Speakers:

May Castleberry, Whitney Museum. *The Whitney Library Fellows*.

Craig Eisendrath, Pennsylvania Humanities Council. *Museum Libraries and State Humanities Councils: A Natural Alliance*.

Tom Phelps, NEH Program Officer for Libraries. *Funding Public Programs for Museum Libraries*.

Katherine T. Freshley, Textile Museum. *Private Funding Sources*.  
Walter Camenisch, Jr., John F. Rich Co., *Private Funding Sources*.

10 P.M.-Midnight Hospitality Suite

**Reception:** All ARLIS/NA Members come and greet first-time conferees.

(The room number of the Hospitality Suite will be announced at Convocation and posted on the bulletin board at the Registration/Information Desk.)

8:30 A.M.-8 P.M. Mezzanine  
8-9 A.M. Provincial North

Salon 5/6

Salon 10

Salon 9

9-11:30 A.M. Provincial North

Provincial South

Salon 5/6

Salon 10

## MONDAY, FEBRUARY 14

**Registration/Information Desk Open**

**CISSIG Business Meeting**

Moderator: Ruta Butkus Marino, Cleveland Museum of Art

**Academic TOL Business Meeting**

Moderator: Janet Clarke-Hazlett, State University of New York, Buffalo

**Formation of Ad-Hoc Microforms Committee Business Meeting**

Moderator: Paula Chiarmonte, State University of New York, Buffalo

**Public TOL Business Meeting**

Moderator: Janice H. Chadbourne, Boston Public Library

**Session D: Cataloging Discussion Session**

Sponsor: CISSIG

Moderator: Sherman Clarke, Cornell University

**Session E: Architecture: Slide Classification and Cataloging — An Update**

Sponsor: Visual Resources SIG

Coordinator: Edith Zuckerman, Temple University, Tyler School of Art

Speakers:

Elizabeth Alley, University of Maryland. *Architecture Classification: An Overview*.

Susan Solomon, Princeton University. *Putting Together a Small Architectural Slide Collection: Classification; Computers; Coexistence*.

Edith Zuckerman, Temple University. *Problems Involved in Recataloguing an Existing Collection — Strengths and Weaknesses*.

**Session F: Collection Development in the 1980's: A Panel Discussion**

Sponsor: Academic TOL

Moderator: Janet Clarke-Hazlett, State University of New York, Buffalo

Speakers:

Elizabeth D. Byrne, University of Cincinnati. *Allocation of Monographic Funds in Academic Art Libraries*.

Nancy J. Pistorius, University of New Mexico. *Drafting and Implementing Collection Development Policies in Academic Art Libraries*.

Loren R. Singer, Concordia University. *The Use of Library Surveys in Collection Evaluation*.

Joanne Waxman, Portland School of Art. *Building an Art Library from Scratch*.

**Session G: Art Microforms Technology**

Sponsor: Ad-Hoc Microforms Committee

Moderator: Paula Chiarmonte, State University of New York, Buffalo

Speakers:

Charles Chadwyck-Healey, Chadwyck-Healey Ltd. *The Future for Microforms in an Electronic Age*.

Rus Gant, Vision Machine Research, Inc. *Applications of the Videodisc to Micrographics*.

continued

SUNDAY / MONDAY

MONDAY / TUESDAY

TUESDAY / WEDNESDAY

	Session G (cont.)	Ara Hourdajian, Microcolor International, Inc. <i>Developments in Color Micrographics.</i> Felix Moore, Mindata Ltd. <i>Publishing Major Art Collections — The Logic of the Microform Approach.</i> William Treese, University of California, Santa Barbara. <i>Rephotographing of Microforms: Translation of Microfiche and Microfilm into Slides and Photographic Prints.</i> Tom Clark, Seidel, Farris, Clark Inc. <i>The New Microslide and its Impact upon the Videodisc and its Future in Visual Libraries.</i>
10 A.M.-Noon	Free Library	<b>Tour of Free Library of Philadelphia.</b> Tour Leader: Irena Uknalis, Art Department, Free Library of Philadelphia. <b>Pre-registration required. Admission tickets with instructions about assembling in Registration Packets.</b>
1:30-2:30 P.M.	Provincial North	<b>Architecture SIG Business Meeting</b> Moderator: Sandra Tatman, The Athenaeum, Philadelphia Speakers: Toni Peterson, AAT Project Mary Ison, Library of Congress (COPAR)
	Provincial South	<b>Serials SIG Business Meeting</b> Moderator: Susan Malkoff-Smith, J. Paul Getty Museum
	Salon 5	<b>Museum TOL Business Meeting</b> Moderator: Roger Lawson, National Gallery of Art
	Salon 10	<b>Visual Resources Business Meeting I</b> Moderator: Trudy J. Buxton, Trinity College
2:30-4:30 P.M.	Provincial North	<b>Session H: Architectural Bibliographic Instruction: Print and Non-Print Resources</b> Sponsor: Architecture SIG Moderator: Sandra Tatman, The Athenaeum, Philadelphia Speakers: Lois Swan Jones, North Texas State University. <i>Architectural Research: A Methodology.</i> Shirlee A. Studt, Michigan State University. <i>Trade Catalogs, Travel Literature and Other Printed Source Material.</i> Paula Chiarmonte, State University of New York, Buffalo. <i>Utilization of Microforms in Architectural Bibliographic Instruction.</i> Susan Wyngaard, The Ohio State University. <i>Online Searching in the Art and Architecture Library.</i> Angela Giral, Columbia University. <i>Architectural Records and Manuscript Materials.</i>
2:30-4:30 P.M.	Provincial South	<b>Session I: Automated Serials Systems</b> Sponsor: Serials SIG Moderator: Nancy Jean Melin, Periodical Specialists, Inc. Speakers: Karin Begg, Boston University. <i>Two Years with Faxon's SC-10: Boston University Libraries' Experience Using Automated Serials Check-In.</i> Sandra Card, University of California, Los Angeles. <i>The Automation Experience at UCLA.</i> Rian Miller-McIrvine, PALINET. <i>Serials Control and Union Listing on OCLC.</i>
5-8 P.M.	Pacific Hall	<b>Exhibits Opening and Reception</b>

7-8:30 P.M.		<b>Informal discussion</b> of Union Listing for Serials. Location to be announced at Serials SIG Business Meeting and posted on bulletin board.
7:30-8:30 P.M.	Provincial North	<b>Visual Resources SIG Business Meeting II</b> Moderator: Trudy J. Buxton, Trinity College
8:30-10 P.M.	Provincial North	<b>Session J: Architecture and the Design of the Art Library</b> Primary Sponsor: Architecture SIG Co-Sponsor: Philadelphia Chapter, AIA Moderator: Leslie Gallery, Philadelphia Chapter, American Institute of Architects Speakers: John Lawson, Mitchell-Giurgula, Architects. <i>The University of Pennsylvania Museum Library.</i> Steve Izenour, Venturi, Rauch, Scott Brown, Architects. <i>The Addition to the Oberlin College Art Museum and the Renovation of the Philadelphia Museum of Art.</i> Marshall Meyers, Marshall Meyers, Architects. <i>The Kimball Museum of Art and the Mellon Center for British Studies at Yale University.</i> Robert Geddes, Geddes, Brecher, Qualls, Cunningham, Architects. <i>The J.B. Speed Museum, Louisville, Kentucky.</i>
11 P.M.-Midnight	Hospitality Suite	<b>Serials Swap</b> Coordinator: Anne O. Reese, Toledo Museum of Art Room number will be announced at Serials SIG Business Meeting and posted on bulletin board.

**TUESDAY, FEBRUARY 15**

7:30-9 A.M.	Canadian Ballroom	<b>Chapter Officers and Regional Representatives Discussion Session</b> (with continental breakfast) Moderator: Incoming Vice-Chairman/Chairman-Elect, ARLIS/NA
8:30 A.M.-Noon	Mezzanine	<b>Registration/Information Desk Open</b>
9-11:30 A.M.	Salon 10	<b>Session K: Authority Files — The Linked Systems Project</b> Sponsor: CISSIG Speaker: Henriette D. Avram, Director for Processing Systems, Networks, and Automation Planning, Library of Congress. <i>Cooperative Cataloging: NACO and the Linked Systems Project.</i>
	Salon 3/4	<b>Session L: Changes in Visual Resources Curatorship</b> Sponsor: Visual Resources SIG Moderator: Shirley M. Gray, Rochester Institute of Technology Speakers: Shirley M. Gray, Rochester Institute of Technology. <i>A Plugged-In Librarian — Hi Tech and I.</i> Eileen Fry, Indiana University. <i>New Images of Ourselves — The Impact of Hi Tech on Professionalism.</i> Luraine Tansey, Mills College. <i>Changing Scene: New Images, Development of Slide Curatorship.</i> Jennifer Hehman, The Ohio State University. <i>Dreams and Schemes to Keep the "Garbage" Out of the System.</i> Ingeborg Wald, Cornell University. <i>Organizing It: A Slide of Life.</i>

9-11:30 A.M. Provincial North **Session M: Art on the Move: Auction Catalogs in the Art Library**  
 Primary Sponsor: Serials SIG  
 Co-Sponsors: Museum and Public TOLs  
 Moderator: Caroline Backlund, National Gallery of Art  
 Speakers:  
 Burton Fredericksen, J. Paul Getty Museum. *Sales Catalogues as a Tool for Art Historians.*  
 Bonnie Postlethwaite, Cleveland Museum of Art. *New Dimensions in Art Sales Information.*  
 William R. Treese, University of California, Santa Barbara. *Art Auctions: the Academic View.*

10 A.M.-2 P.M. Pacific Hall  
 NOON-2 P.M. Canadian Ballroom **Exhibits Open**  
**Membership Luncheon**  
 Guest Speaker: George E. Thomas, Clio Group, Inc. and faculty member, University of Pennsylvania, Drexel University, and Bryn Mawr College, will speak on *Libraries and Learning: Two Centuries of Architecture in Philadelphia.*  
**Pre-registration required for Luncheon. Admission tickets in Registration Packet.**

2-4 P.M. Canadian Ballroom  
 4-7 P.M. Pacific Hall  
 4-8 P.M. Mezzanine  
 4:15-6:15 P.M. Salon 3 **Membership Meeting**  
**Exhibits Open**  
**Registration/Information Desk Open**  
**Session N: Working Session on Small Museum Libraries**  
 Sponsor: Museum TOL  
 Discussion Leaders: Ann Birney, Joslyn Art Museum  
 Barbara Polowy, Rochester Institute of Technology  
 Topics to be discussed: library administration, collection development, public services, technical services, physical management of the collection.

Salon 4 **Bibliographic Methodology and Instruction — Discussion Session**  
 Moderator: Herbert G. Scherer, University of Minnesota  
 Special Report: Ray Anne Kibbey, Southern Oregon State College. *The Design of Instructional Media Material.*

Salon 10 **Art Studio/Art School Librarians' Discussion Session**  
 Sponsor: Academic TOL  
 Moderator: Nadene Byrne, School of the Art Institute of Chicago

4:30-5:30 P.M. Salon 1 **Meeting of SIG and TOL Moderators with Nancy Allen, Chairman, ARLIS/NA**

6 P.M. Mezzanine **CANADIAN MEMBERS:** Loren R. Singer, ARLIS/NA Canadian Regional Representative, encourages all interested Canadian members to meet at the **Registration/Information Desk for optional dinner together.**

6:30  
 7:30-10 P.M. Salon 10 **Women Artists Documentation Interest Group: An Open Discussion**  
 Moderator: Sarah Phillips, Harvard University  
 Discussion will center on two areas of concern: 1) providing a forum for members doing research on women artists to meet, possibly on an ongoing basis, and 2) discussing what directions new research on women artists should take.  
**5 P.M. Moore College of Art, Conference Room (Main Floor)**  
 Interested participants in the Women Artists Documentation Interest Group are also encouraged to meet with members of the Women's

5:00  
 Meet Panel  
 Food Drink

6:30  
 VR Dinner

8-10:30 P.M. Provincial North **Session O: Staffing Art Libraries — Coping with Cutbacks**  
 Primary Sponsor: Museum TOL  
 Co-Sponsors: Academic and Public TOLs  
 Moderator: Thomas J. Jacoby, University of Connecticut  
 Speakers:  
 Ann B. Abid, St. Louis Art Museum. *Staffing Art Museum Libraries: Problems and Solutions.*  
 Celine Alvey, National Gallery of Art. *Federal Occupation Standards for Librarians.*  
 Erica Doctorow, Adelphi University. *Staffing Aides: Angels, Elves, and Other Friends of the Library.*  
 Thomas J. Jacoby, University of Connecticut. *Attracting and Utilizing Volunteers in a Semi-Rural Academic Art Library.*  
 Marilee Fogelson, Free Library of Philadelphia and Vice-President, Local 2186, AFSCME. *Are Unions Opposed to Volunteers?*  
 Herbert G. Scherer, University of Minnesota. *Interns and Volunteers in the Academic Art Library.*  
 Lucija Skuja, Grand Rapids Public Library. *How Public Libraries are Coping with Budget Cuts.*  
 Barry Stahl, Enoch Pratt Free Library. *Setting Direction With Volunteers.*

10:30 P.M.-Midnight Hospitality Suite **Serials Swap**  
 Coordinator: Anne O. Reese, Toledo Museum of Art

## WEDNESDAY, FEBRUARY 16

8-10 A.M. Mezzanine **Registration/Information Desk Open**

8:30 A.M.-5:30 P.M. **Long-Distance Tours**  
**Pre-registration required. Admission tickets, information about point of departure, lunch, day's schedule, in Registration Packet.**  
**Tour: Winterthur Museum and Libraries**  
 Tour Leader: Neville Thompson, Winterthur Museum  
**Tour: Princeton University Art Museum and Marquand Library**  
 Tour Leader: Karin Lazarus, Bryn Mawr College  
**Tour: Bryn Athyn Cathedral and Andalusia**  
 Tour Leader: Carol Campbell, Bryn Mawr College  
**Tour: Brandywine River Museum and Longwood Gardens**  
 Tour Leader: Bert Denker, Winterthur Museum

8:30 A.M.-6:30 P.M.  
 8:30 A.M.-5:30 P.M.  
 8:30 A.M.-5:30 P.M.  
 8:30 A.M.-5:30 P.M.

9-11 A.M.  
 10 A.M.-NOON  
 2-4 P.M.  
 3-4 P.M.

**Local Tours**  
**Pre-registration required. Admission tickets/instructions in Registration Packet.**  
 Tour: Conservation Center for Art and Historic Artifacts  
 Tour: Archives, Pennsylvania Academy of the Fine Arts  
 Tour: Institute for Scientific Information  
 Visit to Louis Kahn Archives, University of Pennsylvania

In order to acquaint you with some of Philadelphia's art libraries and their resources, the following institutions will be pleased to welcome ARLIS/NA conferees on an open-house basis during the hours indicated. No appointment is necessary; just drop in; you will be expected.

- |                  |  |
|------------------|--|
| 9 A.M.-Noon      | American Philosophical Society, Library, 105 S. 5th Street.<br>Associate Librarian Murphy Smith will be there to welcome you.  |
| 9 A.M.-Noon      | The Athenaeum, East Washington Square (219 S. 6th Street).<br>Architectural Librarian Sandra Tatman will welcome you and talk about the Athenaeum's collections. She hopes to have a special exhibit up for you which will highlight the architectural drawing collections.                        |
| 9 A.M.-Noon      | The Free Library of Philadelphia, Art Department, Logan Circle.<br>Members of the Art Department staff will be happy to welcome you.   |
| 9 A.M.-Noon      | Historical Society of Pennsylvania, 1300 Locust Street.<br>Free admission for people wearing ARLIS/NA Conference badges. The library and manuscript departments will expect ARLIS/NA visitors.<br>Current exhibition: <i>George Washington 1732-1799: Portrait of a Legend.</i>                    |
| 9 A.M.-4:45 P.M. | The Library Company of Philadelphia, 1314 Locust Street.<br>Librarian Edwin Wolf 2nd invites ARLIS/NA conferees to visit. The current exhibition is <i>Ruin upon Ruin</i> , a small but beautiful selection of early archaeological publications.  |
| 9 A.M.-Noon      | The Moore College of Art, 20th and Race Streets.<br>Librarian Deborah Alterman welcomes you for visits to the library and slide collection. Visit the gallery on the first floor as well.  |
| 9 A.M.-Noon      | Pennsylvania Academy of the Fine Arts, Broad and Cherry Streets.<br>Ask guard at the Broad Street entrance to phone Librarian Marietta Bushnell, who will come to the entrance to meet you.  |
| 9 A.M.-Noon      | Philadelphia College of Art, Broad and Spruce Streets.<br>Librarian Hazel Gustow will welcome you in the library on the 5th floor; enjoy coffee, a library tour, and receive directions and/or a guided tour of other PCA facilities and exhibitions.  |
| 9 A.M.-Noon      | Philadelphia Museum of Art, Benjamin Franklin Parkway and 26th Street.<br>Ask Guard at either entrance for directions to the library, where the staff will be pleased to show you around. The PMA library participates in the RLIN data base network; perhaps you will want to see how this works. |
| 1-3 P.M.         | The University Museum Library, University of Pennsylvania, 33rd and Spruce Streets.<br>Librarian Jean Adelman will welcome you to this archaeological/anthropological collection. Don't forget the U.M. cafeteria at lunchtime, and the U.M. gift and book shop!                                   |
| 3-4:30 P.M.      | Fine Arts Library, University of Pennsylvania, 34th St. west of Spruce.<br>Located in Frank Furness building. Librarian Alan Morrison will be pleased to welcome you, and will show you the library and the slide collection.  |
| 4:30-6 P.M.      | <b>RECEPTION:</b> Rare Book Room, Van Pelt Library, University of Pennsylvania, in honor of ARLIS/NA conferees.  |
| 6 P.M.           | Interested Visual Resources members are encouraged to meet at the Registration/Information Desk for optional dinner together.  |

Van Pelt Library,  
University of  
Pennsylvania

continued

7:30-10:30 P.M. Salon 5/6

*9:00 Breakfast w/ Roger*

9:30 A.M.-NOON Dominion B

*11:00 VRA Meeting Salon 5/6*

1-5 P.M. Philadelphia Museum of Art

6-10 P.M. Location to be announced

**Workshop: Photographing Works of Art**  
Sponsor: Visual Resources SIG  
Speaker: Edward E. Mullen, President, Color Marketing Concepts  
Pre-registration required. Admission tickets in Registration Packet.

## THURSDAY, FEBRUARY 17

**Joint ARLIS/NA and CAA Session: Some Non-Traditional Resources for Art Historical Research**

Moderator: Marianne Promos, Art Department, Free Library of Philadelphia

Speakers:

Peter J. Parker, Chief of Manuscripts, Historical Society of Pennsylvania.  
*The Sociology of the Survival of Evidence.*

Carol Wojtowicz, Curator and Archivist, The Philadelphia Contributionship and The Mutual Assurance Company. *The Philadelphia Contributionship and The Mutual Assurance Company — Unlikely Sources for Philadelphia Documentation.*

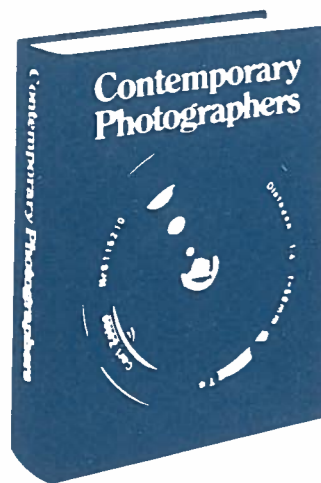
Seymour Adelman, Honorary Curator, Bryn Mawr College and Trustee, Free Library of Philadelphia. *Thomas Eakins: Mount Vernon Street Memories.*

**ARLIS/NA Executive Board Meeting**  
(Open to the membership on a limited-only-by-seating-available basis.)

**ARLIS/NA Executive Board Meeting**



Announcing the publication  
of a truly unprecedented work of reference—



### CONTEMPORARY PHOTOGRAPHERS

edited by George Walsh, Michael Held and Colin Naylor

There is not—and there never has been—another book like *Contemporary Photographers*. It is not a history of photography. It is not another collection of photographs. It is not a trade guide to photographers. It is—for the first time ever—a world reference book on photography, giving detailed information on more than 600 photographers of international reputation—each entrant selected by a distinguished advisory panel.

Selection criteria have been broadly inclusive, extending to all the various contexts in which contemporary photographers work: studio art, commercial portraiture, journalism and advertising.

Similar in format to the award-winning *Contemporary Artists* and *Contemporary Architects*, each entry is composed of a brief biography of the entrant; lists of exhibitions and collections; a bibliography of publications by or about the entrant; a signed critical essay by one of the 150 respected photography critics who served as contributors; in many cases, a comment by the photographer on his/her own work; and, in most cases, one or more excellent reproductions of representative photographs.

January 1983 ISBN 0-312-16791-1 1027 pages. 625 photographs.  
30-page color section. 9x12. \$70.00  
Revised every five years.

### CONTEMPORARY ARCHITECTS

edited by Muriel Emanuel  
architectural consultant: Dennis Sharp

Given special mention by the International Committee of Architectural Critics at the 14th International Architectural Congress of Warsaw.

Named "Outstanding Reference Book of the Year" by the American Library Association.

"A work that surpasses all other reference books on architects, landscape architects, and structural engineers of the 20th century...this book will be for many years the most authoritative and the standard reference on contemporary architects."

—Choice

1980 ISBN 0-312-16635-4  
934 pages 9x12 \$70.00  
Revised every five years.

### CONTEMPORARY ARTISTS

edited by Colin Naylor and  
Genesis P-Orridge

Named an Outstanding Reference Book by the Reference and Adult Services Division of the American Library Association.

"There is nothing comparable to *Contemporary Artists* among art reference tools... (it) serves the twentieth century particularly well...comprehensive in its treatment...Libraries should welcome this book to their shelves. Recommended."

—ALA Reference & Subscription Books Reviews Committee, in Booklist

1978 ISBN 0-312-16642-7 1078 pages  
1250 b&w photos 9x12 \$55.00  
Revised every five years.

### DICTIONARY OF AMERICAN CONTEMPORARY ARTISTS Fourth Edition

edited by Paul Cummings

"An excellent contribution to American artists' biographies." —Choice

Unusual for a book of this kind...finely reproduced monochromes of representative works...make the book visually exciting and worthwhile for browsing."

—American Artist

1982 ISBN 0-312-20097-8  
653 pages 6¼x9½ \$50.00  
Revised every four to five years.

Complete catalogue of reference and scholarly books upon request. Prices subject to change without notice.

To order these books at 20% discount, please send your check or institutional purchase order to:

## St. Martin's Press

Reference & Scholarly Books Division  
Dept. AH, 175 Fifth Avenue, New York, NY 10010.

# F · A · BERNETT · INC



Rare & Scholarly Books  
on the

FINE & DECORATIVE ARTS  
ARCHITECTURE  
ARCHAEOLOGY



2001 Palmer Avenue · Larchmont N.Y. 10538

Tel. 914 834-3026

CATALOGUES ON REQUEST

# Chicago

## THE ART OF DESCRIBING

*Dutch Art in the Seventeenth Century*

**Svetlana Alpers**

Cloth \$37.50 312 pages  
4 color plates, 182 b&w illustrations

## THE COLORS OF RHETORIC

*Problems in the Relation between  
Modern Literature and Painting*

**Wendy Steiner**

Cloth \$25.00 272 pages

## ROMANTIC RE-VISION

*Culture and Consciousness in  
Nineteenth-Century American Painting*

**Bryan Jay Wolf**

Cloth \$27.50 296 pages Illus.

## JOHN SOANE

*The Making of an Architect*

**Pierre de la Ruffinière du Prey**

Cloth \$37.50 432 pages  
8 color plates, 256 b&w illustrations

## HALF A TRUTH IS BETTER THAN NONE

*Some Unsystematic Conjectures  
about Art, Disorder, and American Experience*

**John A. Kouwenhoven**

Cloth \$17.95 256 pages  
48 b&w illustrations

## MANET AND MODERN PARIS

**Theodore Reff**

Published in association with the National Gallery of Art

Cloth \$39.95 280 pages  
9 color plates, 130 b&w illustrations

## A HUMAN COMEDY

*Physiognomy and Caricature in 19th Century Paris*

**Judith Wechsler**

Cloth \$29.95 208 pages  
162 b&w illustrations

## Text-Fiche



## ANCIENT ROMAN ARCHITECTURE

**Fototeca Unione**

Edited by **Karin Einaudi,**  
**Irene Bragantini, Bernard Frischer, and Matilde Mazzolani**

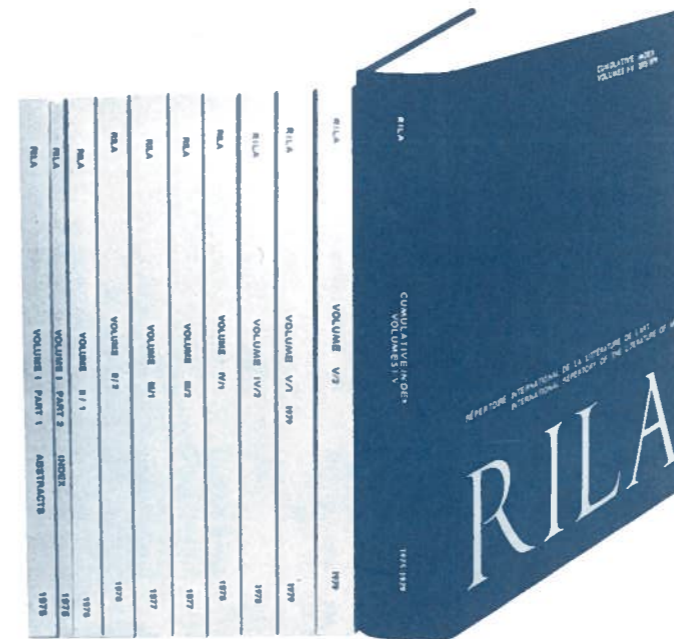
Volume I \$800 24 text pages  
141 b&w fiche (14,000 photographs)

Volume II \$800 40 text pages  
115 b&w fiche (12,000 photographs)

Please visit our display. **Booth #33**

**The University of Chicago Press**

5801 South Ellis Avenue Chicago, IL 60637



Merging in one alphabetical listing the contents of the subject indexes of nine issues, the Cumulative Index provides convenient access to the more than 30,000 citations published in Volumes I-V. In addition, it contains a separate alphabetical listing by authors and a List of Periodicals Indexed. 837 pages. Hardbound. \$125.

### ALSO AVAILABLE

#### RILA Subject Headings

An alphabetical listing of RILA subject headings with cross references, this publication is a useful aid for librarians searching RILA on-line. \$12.50.

# RILA Cumulative Index 1975-1979

**Booths 37 and 38**

A bibliographic service of  
The J. Paul Getty Center  
for the History of Art  
and the Humanities

Sponsored by the  
College Art Association  
of America and ARLIS/NA

### FORTHCOMING

## RAPHAEL

### A BIBLIOGRAPHY

Commemorating the fifth Raphael centenary, this selective bibliography documents the scholarly research on Raphael in the past decade. Drawing on the entire contents of RILA from the Demonstration Issue (1973) through Volume IX (1983), it will be supplemented by additional material not previously published in RILA. September, 1983. \$5.00.

# RILA

Répertoire International de la Littérature de l'Art  
International Repertory of the Literature of Art

Clark Art Institute  
Williamstown, MA 01267  
Tel: (413) 458-8260

**FINE ARTS  
RESOURCES  
FROM G. K. HALL**



**AMERICAN WOMEN ARTISTS:**  
From Early Indian Times to the Present  
Charlotte Streifer Rubinstein  
1982. 7 5/8 x 9 3/16. Illus. 608 pp.  
ISBN 0-8161-8535-2 \$39.95  
The first book to capture the inspiring and often overlooked history of women's art. This elegantly designed cloth edition profiles hundreds of remarkable women and provides a stimulating new perspective on American art through the ages. Illustrated with 49 full color plates and 225 halftones.

**THE DOCUMENTS OF TWENTIETH CENTURY ART**

Edited by Robert Motherwell and Jack D. Flam  
An acclaimed series—now published under G. K. Hall's imprint

**NEW**

**MARCEL DUCHAMP, NOTES**

Arrangement and Translation by Paul Matisse  
Preface by Anne d'Harnoncourt  
February 1983. 7x11 1/2. est. 270 pp.

ISBN 0-8057-9955-9 est. \$65.00  
This elegant facsimile edition of writings published during Duchamp's lifetime and posthumously offers new insight into the man and his work.

Included are substantial sections on Duchamp's masterpiece, *The Large Glass*; on his fascination with "infra-thin" phenomena; and on many of his principal artistic concerns.

**Also Available**

**THE DADA PAINTERS AND POETS:**

**An Anthology, Second Edition**  
Edited by Robert Motherwell  
With a revised bibliography by Bernard Karpel  
1981. 7 x 10. illus. 456 pp.  
bibliography. index. ISBN 0-8057-9951-6 \$40.00

A treasure trove of poems, essays, fragments, and illustrations documenting one of the most provocative movements in modern art history.

**KANDINSKY:**

**Complete Writings on Art**  
Edited by Kenneth C. Lindsay and Peter Vergo  
1982. 6 x 9. illus. 952 pp. 2 volumes. ISBN 0-8057-9950-8 \$60.00

Complete with reproductions of the artist's woodcuts, these handsome volumes make accessible—for the first time in English—all of Kandinsky's aesthetic writings.

**Visit us at  
Booth 18.**

**REFERENCE PUBLICATIONS IN ART HISTORY**

**Now Available**

**STAINED GLASS BEFORE 1540:**

**An Annotated Bibliography**  
Madeline Harrison Caviness  
with the assistance of Evelyn Ruth Staudinger  
February 1983. 6 x 9. est. 353 pp. ISBN 0-8161-8332-5 \$45.00  
Convenient access to some 2000 items on the stained and painted glass of Europe and Byzantium through 1540.

**NEW**

**HIERONYMUS BOSCH:**

**An Annotated Bibliography**  
Walter S. Gibson  
July 1983. 6 x 9. est. 211 pp. ISBN 0-8161-8347-3 \$35.00

The most comprehensive bibliography ever compiled on the visionary creator of *The Garden of Earthly Delights*.

**NEW**

**DUGENTO PAINTING:**

**An Annotated Bibliography**  
James H. Stubblebine  
July 1983. 6 x 9. est. 304 pp. ISBN 0-8161-8438-0 \$45.00

A matchless guide to scholarship and commentary on the era of Cimabue, Cavallini, and Duccio of Siena.

**ITALIAN ROMANESQUE SCULPTURE:**

**An Annotated Bibliography**  
Dorothy F. Glass  
February 1983. 6 x 9. est. xxvi, 302 pp. ISBN 0-8161-8331-7 \$45.00

Extensive listings for literature on every aspect of a seminal epoch in European art history.



*ars libri, ltd.*

286 Summer Street, Boston, MA 02210 U.S.A.  
tel. (617) 357-5212 / telex: 95 1075 (Ars Libri, BSN) / cable: Ars Libri, BSN

We are always interested in purchasing libraries and important individual books in the fine arts.

# Art Books and Illustrated Books

Ars Libri, Ltd. specializes in rare and scholarly books in the fine arts and in illustrated books from the fifteenth to the twentieth century. Our stock of art reference material includes monographs, catalogues raisonné, periodicals and documents relevant to all periods and all fields of art history.

We issue catalogues regularly and provide quotations upon request. We make periodic offerings as well of scholarly libraries and collections, and of original prints and photographs.

Currently available:

- Catalogue 32:* Monographs on Artists (Excluding Italian)
- Catalogue 31:* Oriental Art
- Catalogue 30:* Italian Art and Architecture
- Special Bulletin 24:* Drawings

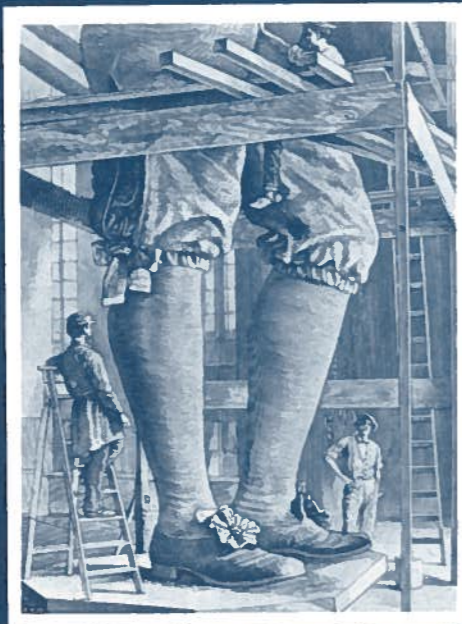
Forthcoming:

- Catalogue 33:* Monographs on Italian Artists: New Acquisitions

G. K. Hall & Co. • 70 Lincoln Street • Boston • MA 02111



Three generations of the Calder family have enhanced Philadelphia with numerous art works. Today three of their works are aligned on the Parkway, a focal point for conference activities. Young emigrant sculptor Alexander Milne Calder spent twenty years as Plaster Modeler for the entire decorative program of 250 figures and reliefs (including Indians and Swedes, continents, elements, seasons, birds and beasts, and the arts) for City Hall, a Victorian "French Second Empire style" building designed by John McArthur, Jr. and Thomas U. Walter. It is still one of the largest and highest masonry structures in the world. Calder's major work, the bronze statue of colony and city founder "Billy" Penn (36 ft. 4 in.), was placed on the tower in 1894, after it was cast in fourteen sections from a clay model, illustrated here (Frederick Faust, *The City Hall Philadelphia*, Phila. 1897, pl. 14, courtesy of The Free Library of Philadelphia). His son Alexander Stirling Calder



made the great bronze figures for the Wilson Cary Swann Memorial Fountain (1924) on Logan Circle. They represent the principal city waterways: the male Indian with fish as the Delaware River to the east, the woman with swan as the Schuylkill (or gentle river) to the south, and the Leda-like girl with swan as the Wissahickon (or hidden creek) to the west. Grandson Alexander (Sandy) Calder created the 24 ft. *Ghost* mobile (1963) suspended in the great East Hall of the Philadelphia Museum of Art. Purchased with New Members' Fund, 65-47-1. A detail appears on the conference badge. All these monuments, expressing both the freedom and order of William Penn's "Holy Experiment," welcome you to the City of Brotherly Love.

Design Mary Madeira