

# 2025-2026 ARLIS/NA Executive Board



**Liv  
Valmestad**

## President

- Nominating Committee
- Awards Committee
- CPAC
- Anti-racism Committee
- Appointments (e.g., affiliates)



**Samantha  
Deutch**

## Vice President

- Strategic Plan Coordinators
- Divisions
- Sections
- SIGs



**Melanie  
Emerson**

## Past President

- Grants
- Development Committee (member)



**Andrew  
Wang**

## Treasurer

- Finance Committee
- Development Committee



**Emilee  
Mathews**

## Secretary

- Cataloging Advisory Committee
- Documentation Committee



**Barcami  
Lane, Inc.**

## Management

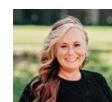
- Amy Stark
- Megan Brouwer
- Emily Clifford
- LeighAnn Sciacca



**Shannon  
Robinson**

## Education Liaison

- SEI
- Professional Development Committee
- Education Subcommittee
- Mentoring Subcommittee



**Sara  
Mautino**

## Advancement Liaison

- Diversity and Inclusion Committee
- Membership Committee



**Cathryn  
Copper**

## Canadian Liaison

- Advocacy & Public Policy Committee
- International Relations Committee
- Melva Dwyer Award Subcommittee



**Dana  
Ospina**

## Editorial Director

- Editorial Board
- Art Documentation
- ARLIS/NA Reviews
- Digital Art History Directory
- Library Exhibitions Review
- Multimedia & Technology Reviews
- Notable Graphic Novels Review
- ARLIS-L
- ARLIS/NA Commons



**Lori  
Salmon**

## Chapters Liaison

- Canada
- MOQ
- Ontario
- Northwest
- Northern California
- Southern California
- Mountain West
- Central Plains
- Mid-States
- Ohio Valley
- Twin Cities
- New England
- New York
- Upstate New York
- Mid-Atlantic
- Southeast
- Texas-Mexico