

FedEx Cargo Floor Lock – Removal/Inspection/Repair/Installation Event

Cargo Floor Lock Removal/Inspection/Repair/Installation

1. General

- A. This maintenance practice provides removal/inspection/ installation instructions for the cargo floor lock P/N 81969-10
- B. The floor lock can be found in the cargo compartment of freighter aircraft

Lock Removal

- 1) Remove nuts washers and bolts that attach the lock to the seat track
- 2) Remove lock from track for inspection/repair

Disassembly and Inspection – (Ref Fig)

- 1) Ensure the pawls are folded down
- 2) Begin with the outer pawl
- 3) Remove cotter pin/s from each shaft and remove the shaft
- 4) Remove the pawl and springs. Observe location washers or spacers for correct reassembly
- 5) Remove the inner pawl
- 6) Remove cotter pin/s from each shaft and remove the shaft as necessary
- 7) Remove the pawl and springs. Observe location washers or spacers for correct reassembly

Verbal – Tell judges spring inspection is completed

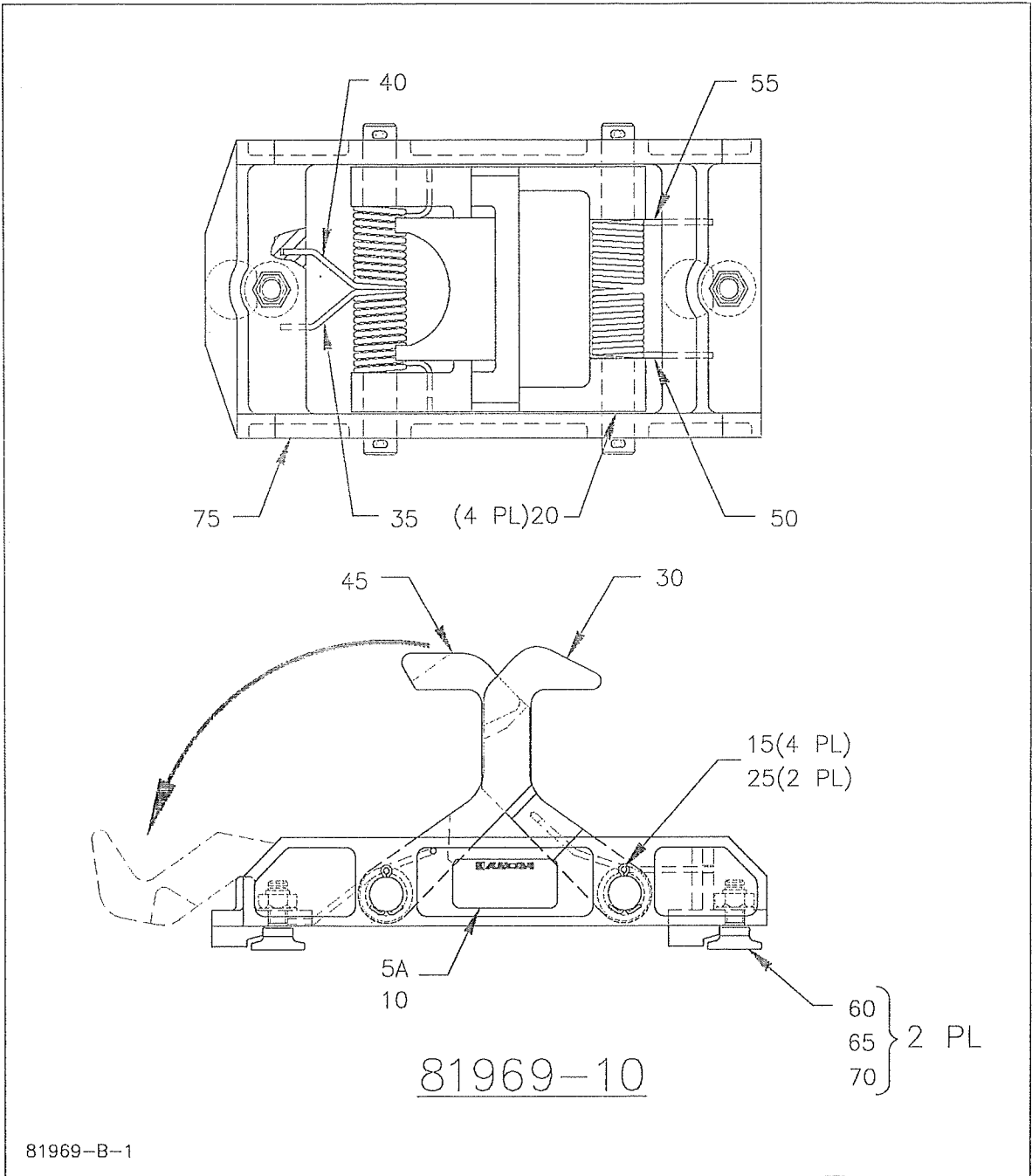
Reassembly – (Ref Fig)

- 1) Install the inner pawls by placing two springs and the inner pawl into position the base
- 2) Engage the tangs of the springs in the holes of the pawls
- 3) Insert one shaft through the base, the pawl, and the springs
- 4) Install the washers and or spacers as applicable
- 5) Secure the shafts with two cotter pins
- 6) Install the outer pawls by placing two springs and the outer pawl into position the base
- 7) Engage the tangs of the springs in the holes of the pawls
- 8) Insert one shaft through the base, the pawl, and the springs
- 9) Install the washers and or spacers as applicable
- 10) Secure the shafts with two cotter pins
- 11) Check pawl operation

Lock Installation

- 1) Reinstall the floor lock back into the seat track
- 2) Install the lock utilizing the removed shear studs, washers, and nuts
- 3) Torque nuts to 83 to 115 IN - LBS
 - a. Show judge torque setting
- 4) Check pawl operation

Make certain your work area is clean and clear of tools and miscellaneous items and equipment. Put tools back on the table and in place. Tell judge you're done, clock will stop.



Cargo Lock Assembly, PN 81969-10

FIG. ITEM	PART NUMBER	AIRLINE PART NO.	NOMENCLATURE 1234567	USAGE CODE	UNITS PER ASSY
14					
-1	81969-10		LOCK ASSY, CARGO (See Figure 1-60 for NHA)		RF
5	81956-11		DELETED		D
5A	81956-13		. NAMEPLATE		1
7	81956-12		DELETED		D
10	81956-20		. COVER		1
15	MS24665-229		. PIN, COTTER		4
20	5710-92-16		. WASHER, (V86928)		4
			(Alt to item 20A)		
-20A	5710-91-16		. WASHER, (V86928)		4
			(Alt to item 20)		
25	80471-13		. SHAFT		2
30	80467-10		. PAWL, OUTER		1
35	80470-12		. SPRING, TORSION		1
40	80470-13		. SPRING, TORSION		1
45	80466-10		. PAWL, INNER		1
50	80469-12		. SPRING, TORSION		1
55	80469-13		. SPRING, TORSION		1
60	81673-11		. STUD, TENSION		2
65	NAS1149F0432P		. WASHER		2
70	NAS679A4		. NUT, SELF-LOCKING		2
75	83006-10		. BASE		1

- NOT ILLUSTRATED