

The Challenges We Face

*Pete Grass
Asphalt Institute*

Association of Modified Asphalt Producers

Savannah, GA February 2, 2010



Good news...

Things to work on...

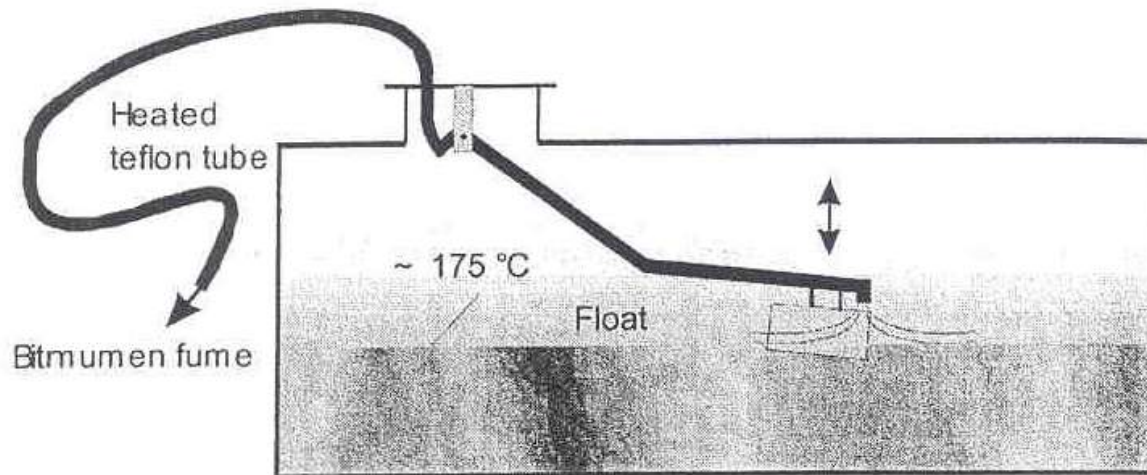
**the Good
News!**

24 Months Inhalation Carcinogenicity Study of Bitumen Fumes in Wistar (WU) Rats

Rainer Fuhst, Otto Creutzenberg, Heinrich Ernst, Tanja Hansen,
Gerhard Pohlmann, Alfred Preiss, and Susanne Rittinghausen

Fraunhofer Institut Toxikologie und Experimentelle Medizin, Hannover, Germany

Fraunhofer Method



**Bitumen fume is not
considered to be
tumorigenic to rats.**

**Bitumen related irritant
effects were observed in
the nasal passages and in
the lungs.**

A Case-Control Study of Lung Cancer Nested in a Cohort of European Asphalt
Workers

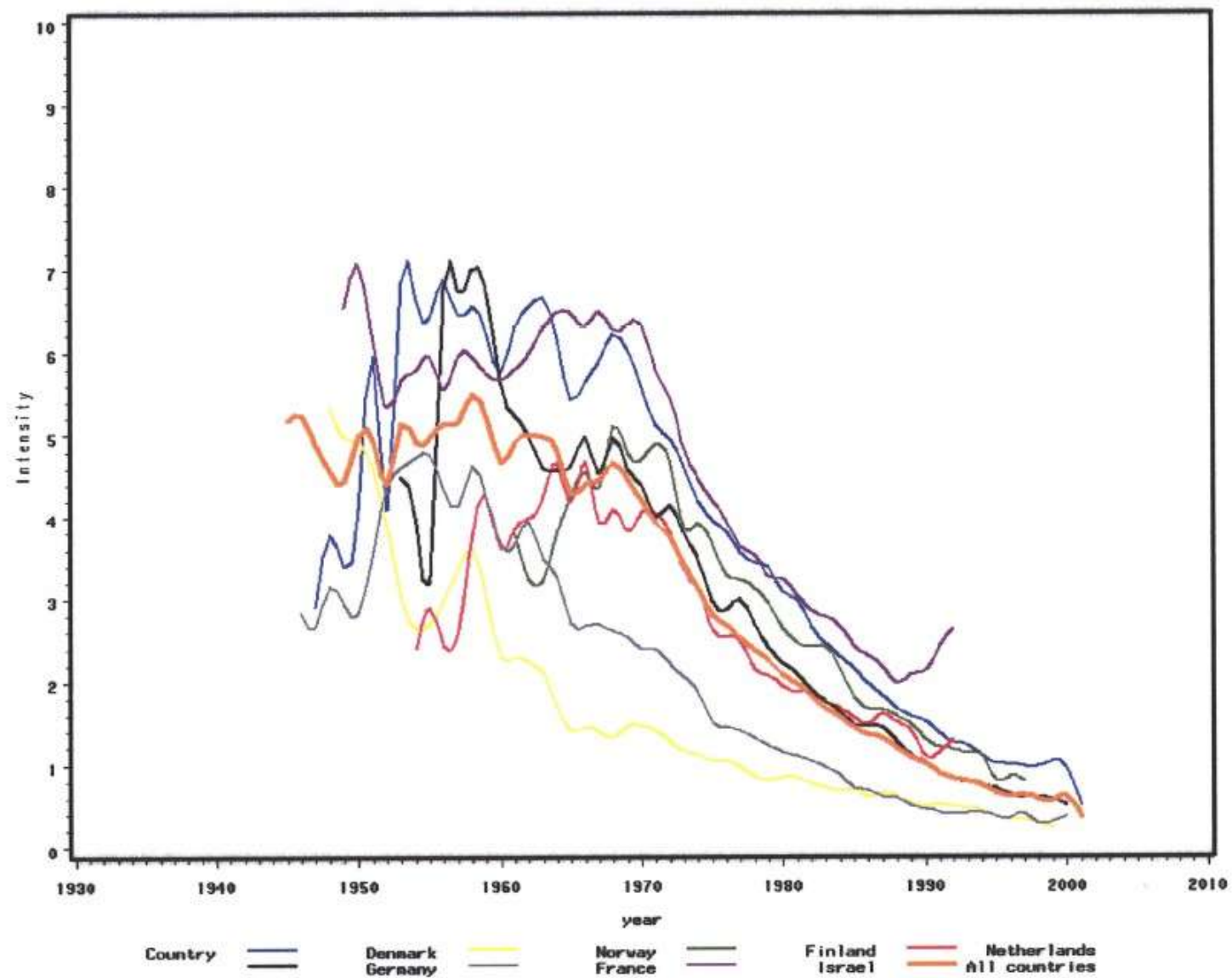
Final Report

1 July 2009

Paolo Boffetta, Ann Olsson, Michela Agostini, Johnni Hansen,
Christina Funch Lassen, Christoffer Johansen, Kristina Kjaerheim, Sverre Langard,
Isabelle Stucker, Wolfgang Ahrens, Thomas Behrens, Marja-Liisa Lindbohm,
Pirjo Heikkilä, Dick Heederik, Lötzen Portengen, Judith Shahan, Gilles Ferro,
Frank de Vocht, Igor Burstyn, Hans Kromhout

IARC, Lyon

Bitumen fume



**No evidence of an
association between
bitumen fumes and
lung cancer in
asphalt workers.**

Straight-run asphalt (PG 64-22)

Asphalt Institute



Preliminary Paving Fume Study Conclusions

- Animals tolerated exposures well and survival was consistent with control group
- Mild irritation
- No other adverse findings related to test material application
- The paving fume condensate was not carcinogenic in the mouse dermal bioassay



*"Good news. The government has downgraded
our emissions from 'toxic' to 'smelly.'"*



Good news...

Things to work on...

Funding

Report of the
**National Surface Transportation Policy
and Revenue Study Commission**

Transportation for Tomorrow

December 2007

- Sought a long-term fix to keep our competitive advantage
- 5-8 ¢ per year for 5 years
- But headline was a 40 ¢ tax! **DOA**
- Where is the political will and where does it come from?
- Congress is not sensitized to this
- ***It's hard!*** A split Commission shows this

PAYING OUR WAY

*A New Framework
for Transportation Finance*



EXECUTIVE SUMMARY

- ***Congressional study to***
 - *Recommend policy and action*
 - *Unanimous report!*
- ***Real funding down 50% since late 50's***
- ***Inflation ate 33% since 1993***
- ***Americans spend 4B hours/yr in stuck in traffic***
- ***Simulus isn't the answer***
- ***No silver bullet***
- ***Fuel taxes not a***

Training

Training trends

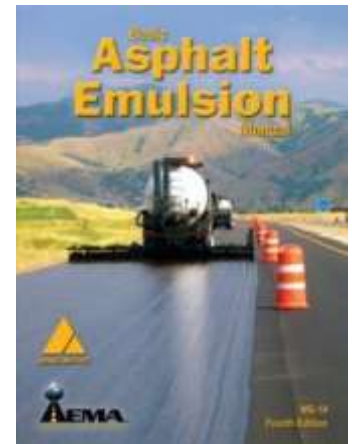
- Less than 24 percent of graduating civil engineers are going into transportation
- From 2008 through today – we've closed plants, laid off our workforce as have the agencies
- Cash flow is king – we'll do what it takes to preserve it – it keeps us in business
- RESULT? Training suffers
- Industry is replacing face-to-face training with webinars
- Part of the solution – not THE solution
- You cannot replace the benefit of the on-site training experience for your students/workforce

AI's Mix Design Course

- Newly revised for 2010
- Lots of work – new curriculum
- Next offering February 23-26, 2010
 - Lexington, KY
- See them all at www.asphaltinstitute.org

Basic Asphalt Emulsion *webinar*

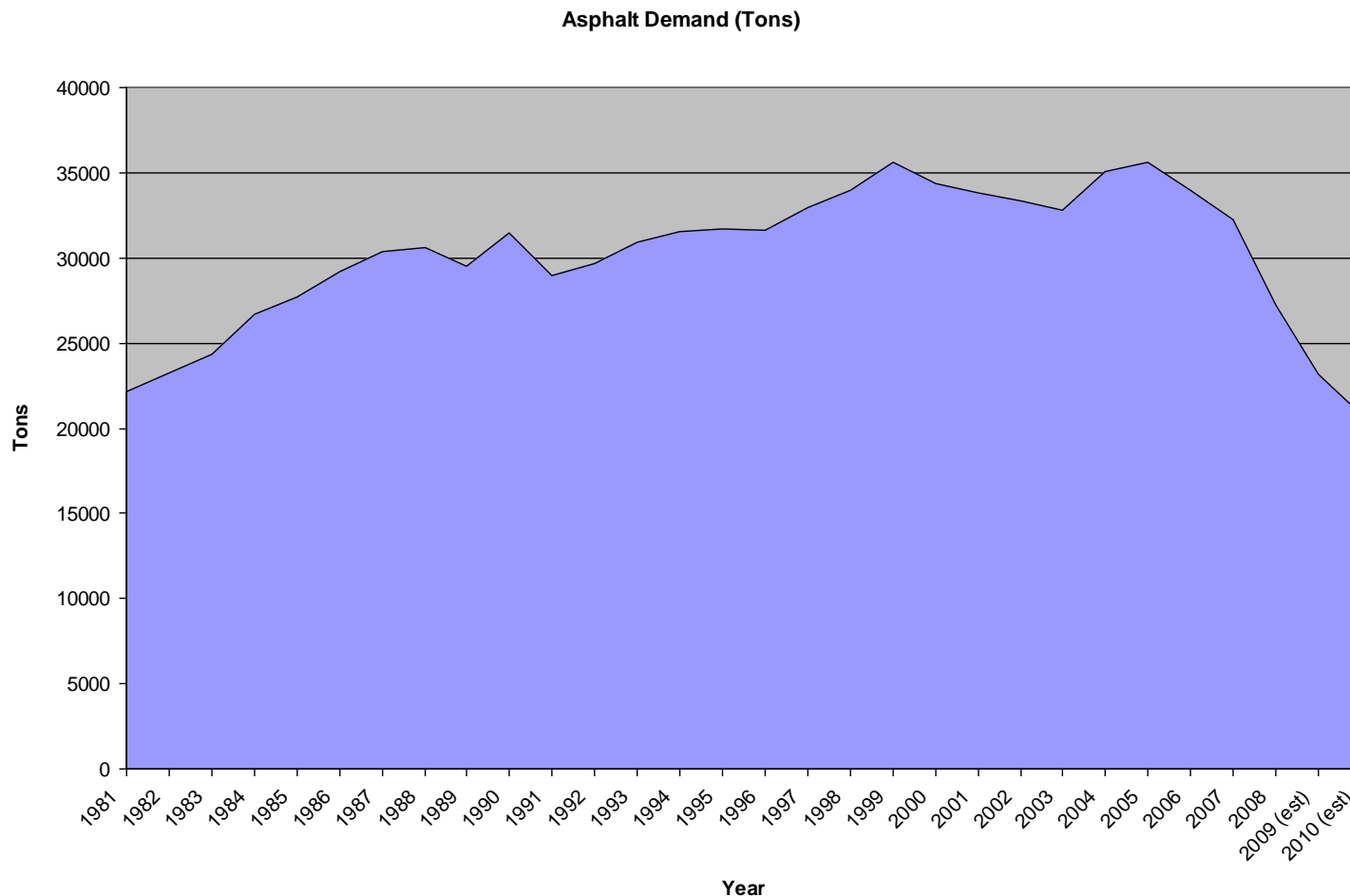
- Five (5) 90-minute webinar sessions
- Follows MS-19
- Begins noon-EST
- April 27, May 4, 11, 18, 25
- Live broadcast, recorded playback available
- Instructors from AI member Co's



**Bullish
on
asphalt!**

US Asphalt Demand (000 Tons – 1981 – 2010 est)

asphalt institute

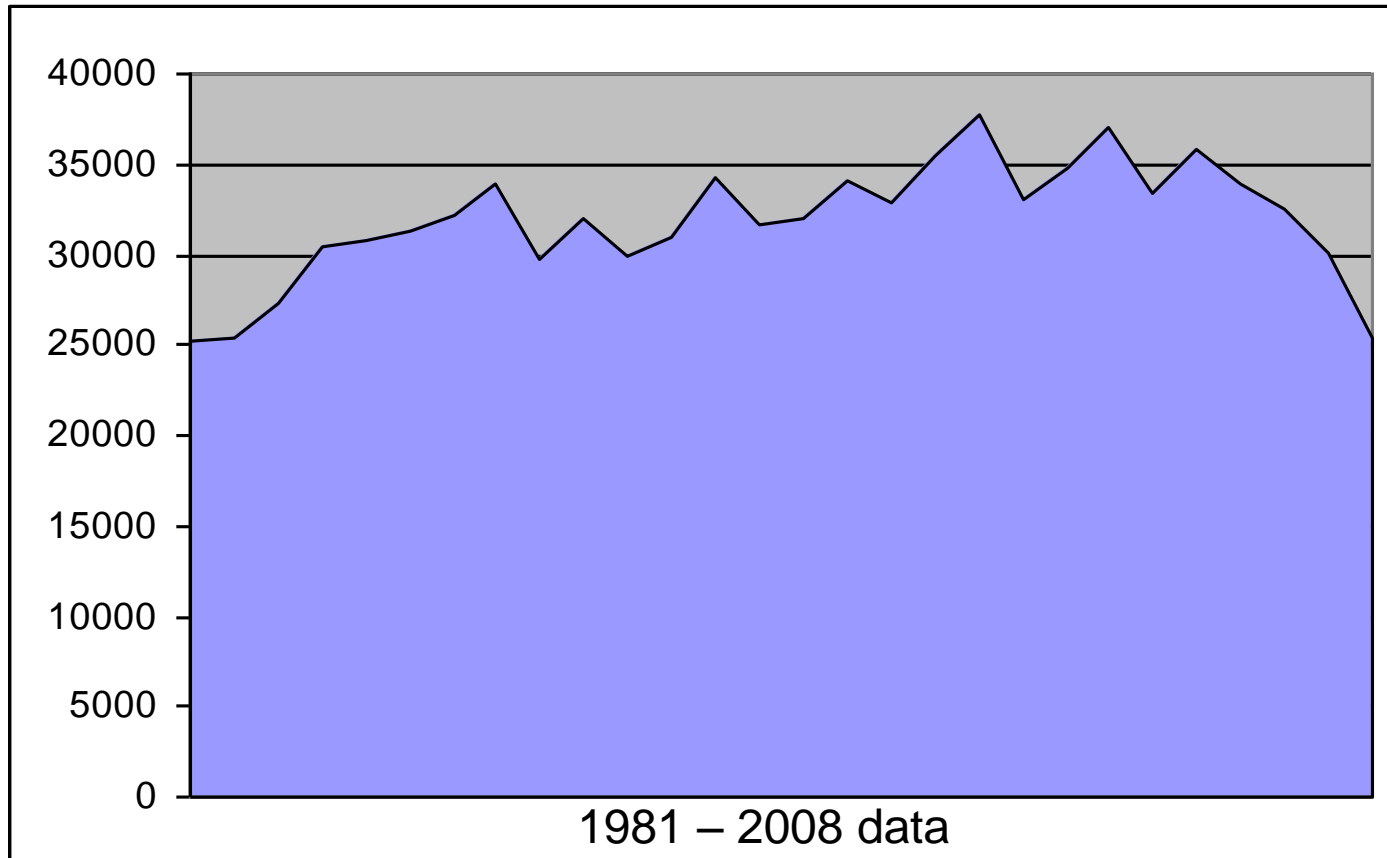


Source: EIA data



AI Tonnage Data (Tons – 1981 – 2008 actual)

asphalt institute



Source: Asphalt Institute data



