

### Program Summary:

A new 20,720 square foot “No-Kill” Animal Shelter comprised of spaces for dog and cat housing, public education and training, offices, and clinical spaces.

### Program Statement:

The Animal Shelter needed a larger updated facility in order to provide better living conditions for animals, as well as a better experience for the general public. The warm and inviting Adoption Lobby creates a positive first impression which had been shown to increase animal adoptions. A 450 square foot Education Center allows the shelter to host public training events and better educate the public on animal care. The new shelter not only holds more animals, but their housing areas are larger, have more natural light, and are easier to clean and maintain. The larger clinical areas with access to natural light allow for improved veterinary care. The site has multiple exercise yards and play areas for the animals as well as a landscaped retention pond surrounded by a walking path. Potential adopters can take dogs on a walk and get to know them before they take them home. The pond area is open to the general public and thereby doubles as a community park for local residents.

The campus has two buildings separated by short covered walks. The Main Building in front houses the Cat Condos, Lobby, Education Center, Clinical Areas, and Offices while the rear building houses all of the Dog Dorms.

The Dog Dorms and Cat Condos lay out in such a way that the public can safely wander through them without staff present. This allows the shelter to operate more efficiently and reduces wait times for people interested in adopting animals.

# A235.01

Building Area: (sf)  
**20,720 sf**

Cost per Square Foot:  
**376**

Construction Cost  
**\$7.8 Million**

Date of Completion:  
**May 2021**

# A235.02



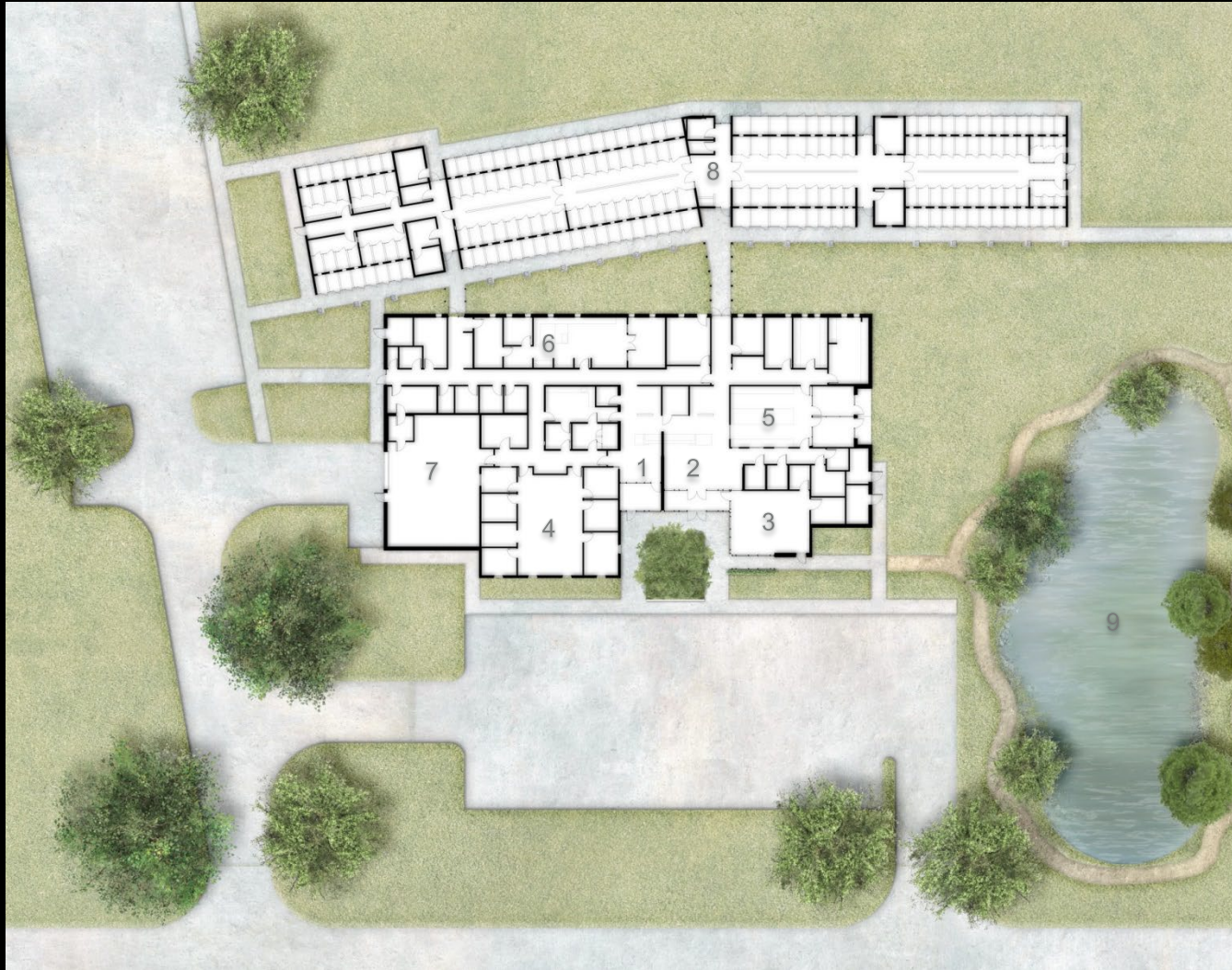
EARLY IN THE PROGRAMMING PHASE IT BECAME CLEAR THAT THIS COMMUNITY VALUED A SHELTER THAT WOULD CARE FOR AND REHABILITATE ORPHANED ANIMALS. AS ARCHITECTS WE TRIED TO CREATE A DESIGN THAT SUPPORTS THIS MISSION ON ALL LEVELS.

IT IS IMPORTANT FOR PUBLIC PROJECTS SUCH AS THIS ONE TO UPLIFT THE COMMUNITY AND PROMOTE RESILIENCE. FIRST, WE TRIED TO CREATE A BUILDING OF WHICH THE COMMUNITY WOULD BE PROUD. SECOND, WE TRIED TO PROMOTE THE NOTION THAT WE ARE STEWARDS OF THE NATURAL ENVIRONMENT AND THIS INCLUDES ANIMALS WITHIN THE COMMUNITY.

DUE TO RECENT PROBLEMS WITH MASS FLOODING IN THE AREA WE CREATED A SITE THAT PROCESSES STORMWATER IN A RESPONSIBLE WAY. THEN WE LEVERAGED THIS IN TWO MAIN WAYS:

- 1) CREATING A POND THAT IS A BEAUTIFUL FEATURE WHERE STAFF AND PUBLIC CAN SPEND TIME WITH THE ANIMALS.
- 2) CREATING A PUBLIC PARK OPEN TO ANYONE WHO WANTS TO ENJOY IT.

# A235.03



1) SURRENDER LOBBY W/  
COUNSELING OFFICES TO  
MINIMIZE ANIMAL RETURNS

2) ADOPTION LOBBY W/ DIRECT  
VIEWS OF THE CAT CONDOS

3) EDUCATION/CONFERENCE W/  
SECONDARY SEPARATE  
ENTRANCE

4) STAFF OFFICES CONNECT  
DIRECTLY TO THE LOBBY,  
CLINICAL AREAS, AND SALLY  
PORT.

5) CAT CONDOS HAVE AMPLE  
NATURAL LIGHTING AND ARE  
VISIBLE FROM THE LOBBY TO  
HELP ENCOURAGE ADOPTIONS.

6) CLINICAL SPACES INCLUDING  
STATE OF THE ART SURGERY  
SUITE PROVIDING FOR  
IMPROVED TREATMENT OF  
INJURED ANIMALS.

7) SALLY PORT ALLOWS WORK  
VEHICLES TO BE CLEANED AND  
SERVICED OUT OF THE  
ELEMENTS.

8) DOG DORMS HAVE BOTH  
EXTERIOR AND INTERIOR RUNS.

9) PUBLIC PARK W/ RETENTION  
POND & WALKING PATH



# A235.04

FIBER-REINFORCED  
CONCRETE RAINSCREEN @  
OFFICES

GLASS CURTAIN WALL @  
LOBBY

FIBER-REINFORCED  
CONCRETE RAINSCREEN &  
GLASS CURTAIN WALL @  
EDUCATION



BUILDING MATERIALS RESPOND TO THE PROGRAM AND IN THIS WAY HELP WITH WAYFINDING AND ORIENTATION.

A FIBER-REINFORCED-CONCRETE PANEL RAINSCREEN CLADS THE OFFICES. LIMITED FENESTRATION W/ CERAMIC FRITTED GLASS CREATES A SENSE OF PRIVACY AND LIMITS HEAT GAIN.

A GLASS CURTAIN WALL AT THE LOBBY DENOTES THE ENTRANCE AND ALLOWS FOR AMPLE NATURAL LIGHT TO FLOOD THE INTERIOR.

THE EDUCATION ROOM FUNCTIONS AS A PUBLIC AND PRIVATE SPACE AND IS THEREFORE CLAD IN BOTH CURTAIN WALL AND FIBER-REINFORCED-CONCRETE PANELS.

CLINICAL SPACES ARE THE MOST PRIVATE AND ARE CLAD IN BRICK. OPENINGS ARE CONCENTRATED ON THE NORTH SIDE TO CAPTURE LOW-GLARE LIGHT. THIS ALLOWS FOR WINDOW SHADES TO REMAIN OPEN EVEN IN THE SURGERY SPACES.

## A235.05



A HIGH ADOPTION RATE IS THE MOST CRUCIAL FACTOR IN MAINTAINING NO-KILL STATUS. WITH THIS IN MIND WE CREATED A GRAND MAIN ENTRANCE FOR A POSITIVE FIRST IMPRESSION AND A MORE POSITIVE PUBLIC EXPERIENCE. RESEARCH SHOWS THAT SHELTERS THAT ARE VIEWED POSITIVELY BY THE COMMUNITY HAVE HIGHER ADOPTION RATES.

A LARGE CANTILEVERED OVERHANG ENSURES THE SOUTH FACING GLASS IS SHADED IN THE SUMMER. THE OVERHANG IS SIZED SO THAT IN THE WINTER THE SUN SHINES IN TO WARM THE LOBBY BUT STILL BLOCKS THE GLARE FOR EMPLOYEES AT THE ADOPTION DESK.

# A235.06



1) ADOPTION LOBBY W/  
CLERESTORIES, LIGHT SHELVES,  
& PROPERLY SIZED OVERHANG  
MAXIMIZES NATURAL LIGHTING  
WHILE REDUCING HEAT GAIN  
AND GLARE.

2) COUNSELING OFFICES  
ENSURE PATRONS ARE PAIRED  
WITH THE RIGHT ANIMAL WHICH  
MINIMIZES RETURNS.

3) CLINICAL SPACES INCLUDING  
STATE OF THE ART SURGERY  
SUITE WITH ACCESS TO  
NATURAL LIGHT PROVIDES FOR  
IMPROVED TREATMENT OF  
INJURED ANIMALS.



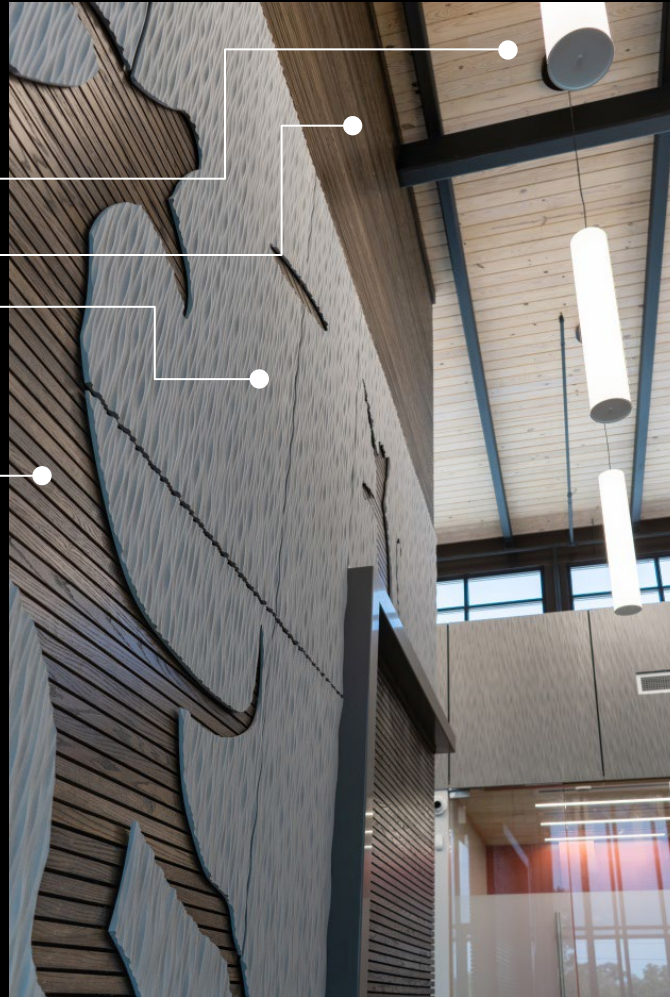
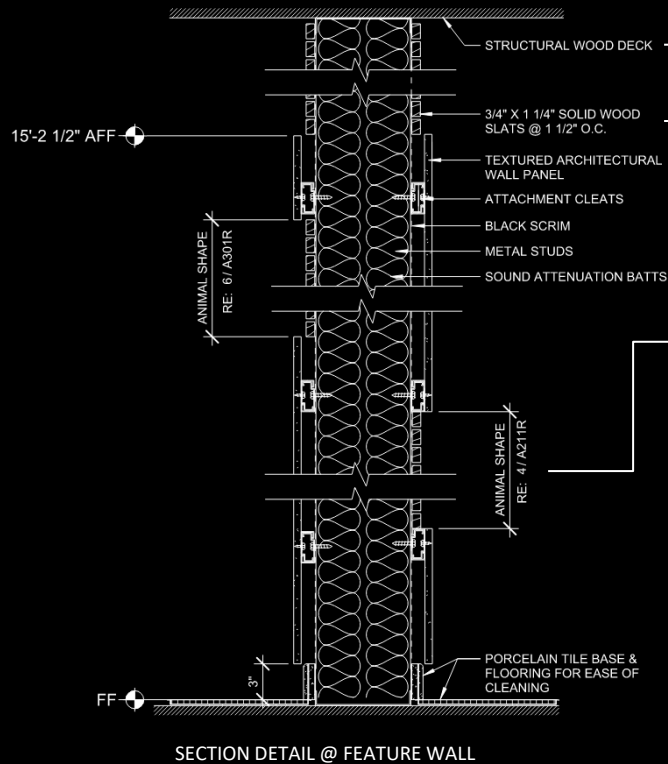
## A235.07



IN THE **LOBBY**, 360 DEGREE CLERESTORY WINDOWS ALONG WITH FRONT AND REAR LIGHT SHELVES PROVIDE AMPLE NATURAL LIGHTING THROUGHOUT THE SPACE.

DOG AND CAT SHAPES LASER CUT INTO THE DECORATIVE WALL PANELS ALONG WITH COLOR CODED ACCENT WALLS HELP WITH WAYFINDING AND ELIMINATE THE NEED FOR SIGNAGE IN THE LOBBY.

# A235.08



A **FEATURE WALL** IN THE LOBBY SERVES MULTIPLE FUNCTIONS:

- HINTS AT A FUN AND PLAYFUL ATMOSPHERE AND SUPPORTS A POSITIVE PUBLIC EXPERIENCE.
- VISUAL DIVIDER BETWEEN SURRENDER AND ADOPTION LOBBIES.
- ACOUSTICAL SINK – OPENINGS BETWEEN SLATS ALLOW SOUND WAVES TO PASS THROUGH WHERE THEY HIT ACOUSTICAL INSULATION WHICH DAMPENS THE SOUND OF BARKING DOGS.
- SLATS ADJACENT TO ADOPTION DESK DOUBLE AS SLATWALL SYSTEM FOR DISPLAYING MERCHANDISE FOR SALE SUCH AS LEASHES, COLLARS, AND T-SHIRTS.





## A235.09



AN **EDUCATION ROOM** OFF OF THE LOBBY FOYER SERVES AS A PLACE TO HOLD BOTH STAFF AND PUBLIC TRAINING SESSIONS. THE SEPARATE EGRESS DOOR ALLOWS ACCESS TO THE ROOM AFTER HOURS. EXPANDED PUBLIC EDUCATION AND OUTREACH LEAD TO A MORE POSITIVE RELATIONSHIP WITH THE COMMUNITY, AND BY EDUCATING NEW OWNERS THE SHELTER STAFF ARE HELPING TO MINIMIZE ANIMAL RETURNS. BOTH OF THESE GO HAND IN HAND WITH MAINTAINING HIGH ADOPTION RATES.

A GROW WALL JUST BEYOND THE SOUTH FACING GLASS PROTECTS THE ROOM FROM THE HARSH SOUTHERN SUN AND PROVIDES BIOPHILIC VIEWS FOR BOTH ANIMAL AND HUMAN OCCUPANTS.





## A235.10

CLERESTORY WINDOWS IN THE **DOG DORMS** ALLOW FOR NATURAL LIGHT TO FLOOD THE INTERIOR WITHOUT GLARE AND HEAT GAIN. AN EXPOSED PERFORATED STRUCTURAL METAL DECK WITH ACOUSTICAL INSULATION HELPS DAMPEN SOUND IN THE SPACE. A “BARK WALL” SEPARATING EACH ROW OF DOG RUNS KEEPS THE DOGS FROM SEEING EACH OTHER AND MINIMIZES BARKING. A SPECIALLY DESIGNED HVAC SYSTEM ALLOWS FOR AMPLE AIR CHANGES TO MINIMIZE UNPLEASANT SMELLS.

EACH DOG RUN HAS BOTH INTERIOR AND EXTERIOR SECTIONS SEPARATED BY INSULATED DOG-DOORS ALLOWING ACCESS CONTROL TO EITHER SIDE DURING DAILY CLEANING. ALLOWING THE ANIMALS TO HAVE UNLIMITED ACCESS TO THE OUTDOORS MAKES THEM HEALTHIER AND LEADS TO HIGHER ADOPTION RATES.

THE ROOF CANLITEVERS TEN FEET IN ORDER TO ENSURE THE ANIMALS HAVE AMPLE SHELTER FROM THE HOT SUN AND HEAVY RAINS THAT ARE SO COMMON IN SOUTH LOUISIANA.

# A235.11

EXTERIOR VIEWS OF THE  
OFFICES AND EDUCATION ROOM  
WHICH FLANK THE MAIN LOBBY





Project Name:  
Lafayette Animal Shelter & Care Center

Project Location:  
Lafayette, LA

Owner/Client:  
LAFAYETTE CONSOLIDATED  
GOVERNMENT

Architect(s) of Record:  
(names and addresses)  
ARCHITECTS BEAZLEY MOLIERE  
300 HEYMANN BLVD  
LAFAYETTE, LA 70503

Project Team:  
Adam Beazley, AIA - Principal in Charge  
Scott Chappuis, AIA - Project Manager  
Melissa Poche'

Landscape Architect:  
N/A

Consultants:  
Longo Architecture Studio, LLC – Veterinary  
Specialist

Fox Nesbit Engineering, LLC – Structural

Associated Design Group, Inc. – MEP

CPS Engineering - Civil

General Contractor:  
JB Mouton & Sons

Photographer(s):  
(please list which specific slides get credited to each  
photographer(s) listed).  
Adam Burke – Slides 2, 4, 7-10  
Scott Chappuis – Slides 5, 11

# A235.x

Credit Slide

This slide will not be seen by the judges. It replaces what in past years has been in the sealed envelope.

Please fill out the information requested to the left. As with other slides please set the correct Entry Number above; OK to leave slide# as "x"

Some of this information will be added to the slides when used for the Awards Presentation at the AIA Louisiana Convention.

Note: on this slide if you run out of space please adjust font size as necessary or move more information to the second column.

Please submit 2 Power Point Submissions online as indicated on the instructions sent to you with your entry number (one w/credit slide and one without).