

Program Summary:

The new Hospital Center for Innovation will serve as the headquarters for the Hospital's innovation group it formed in 2015.

Program Statement:

The Hospital Center for Innovation will be a state-of-the-art collaboration space for the Hospital and its partners to develop, test, and implement innovative healthcare solutions with a focus on digital health, precision medicine, and advanced analytics to shape the future of healthcare. In addition to Center staff workspaces, key components of the Center include: a makerspace, where new technologies can be created; a prototype lab, featuring a full-scale mock hospital room, waiting room, and exam room where new technologies can be tested; flexible office spaces; collaboration spaces to promote organic tenant interactions; and a training center to host conferences and community events, including job trainings, business assistance programs, and educational seminars.

UP-350.01

Building Area: (sf)
30,000 SF

Cost per Square Foot:
TBD

Construction Cost
TBD

Date of Completion:
**Estimated Completion
2022**

UP-350.02

Exterior View

The dynamic building form negotiates a scalar shift in elevation from the residential neighborhood to the west and to the 14-story hospital tower to the east. The main entrance occurs below the cantilevered corner of the building off the landscaped front plaza.

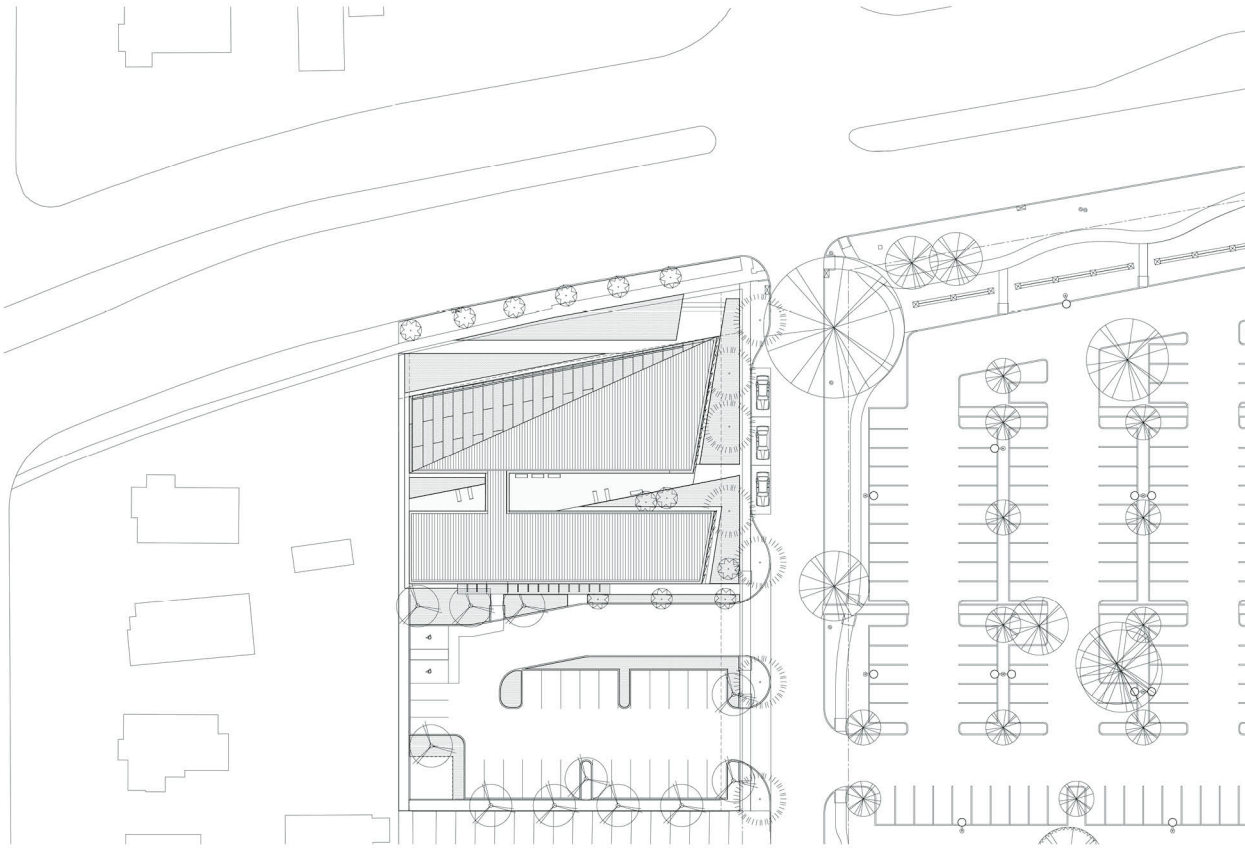


UP-350.03

Site Plan

Located at the corner of a major highway and smaller road, the total site area is approximately 37,000 square feet. An extensive amount of native landscape will surround the building, complete with local flora which will be low maintenance and attract insects and wildlife.

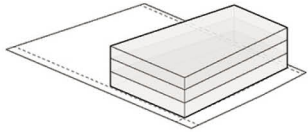
Approximately 32 new trees will be planted on site allowing for a natural tree cover and shade for occupants wanting to spend time outdoors during breaks. A pair of landscaped bio-swales will be integrated into the front part of the site, providing for on-site stormwater treatment and management.



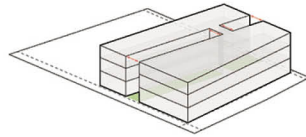
UP-350.04

Massing Diagrams

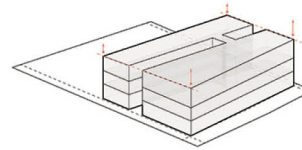
The massing for the building was the result of a careful orchestration of self-shaded and north-facing glazing, a central landscaped courtyard, a roof pitch that can accommodate photovoltaic (PV) arrays for on-site energy generation, and maximizing the site by carefully stacking program onto three levels, allowing for space for future expansion at the rear of the site.



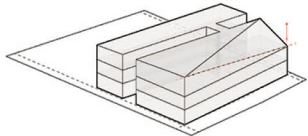
PROGRAM STACKED ON SITE



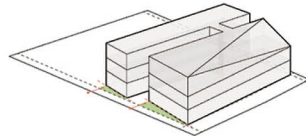
BUILDING SPLIT TO ACCOMMODATE COURTYARDS
& DIFFUSE DAYLIGHTING



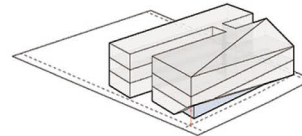
ROOF PITCHED TO MAXIMIZE BUILDABLE ENVELOPE
& TO IDEALIZE GEOMETRY FOR PHOTOVOLTAICS



ROOF SLOPED DOWN TO NEGOTIATE MASSING
WITH SURROUNDING CONTEXT



WALLS ANGLED TO INCREASE LANDSCAPED BUFFER

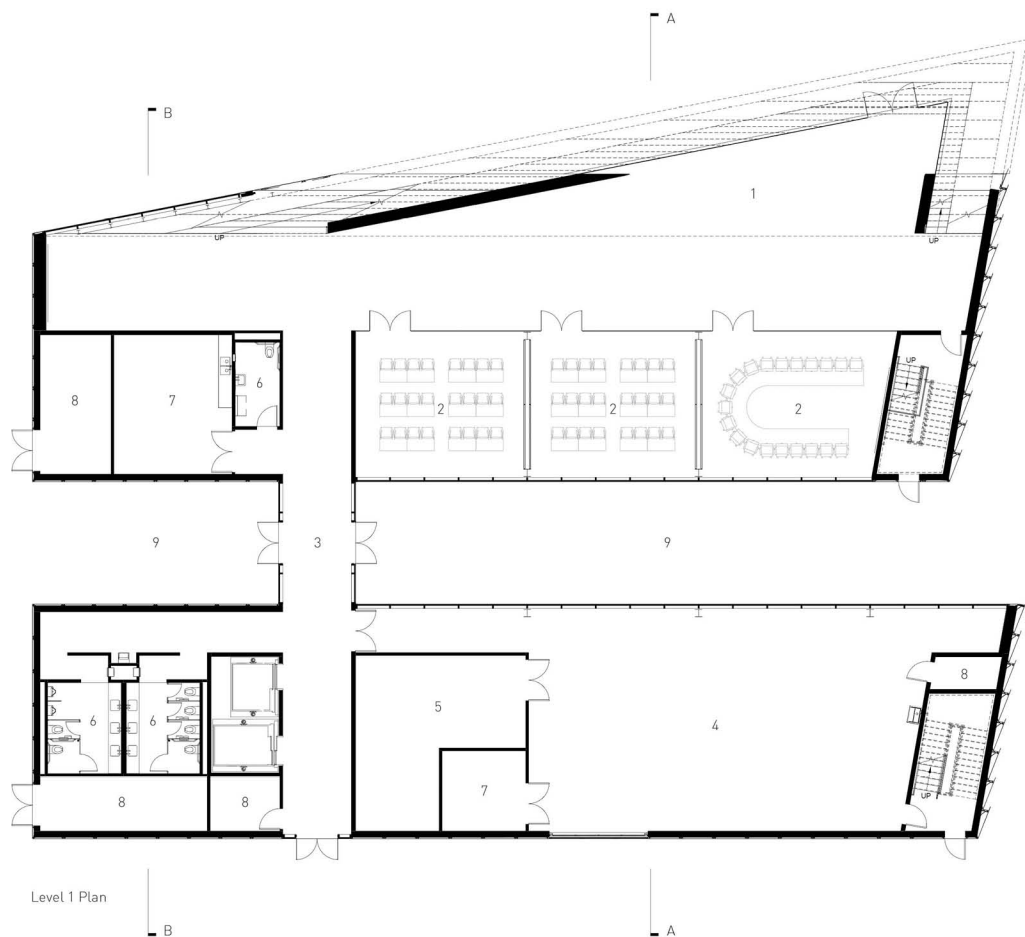


BUILDING LIFTED TO REVEAL PUBLIC ENTRY

UP-350.05

Floor Plan – Level 1

- 1 Lobby
- 2 Classroom
- 3 Bridge
- 4 Maker Space
- 5 Woodworking Space
- 6 Restroom
- 7 Storage
- 8 MEP
- 9 Courtyard



Level 1 Plan

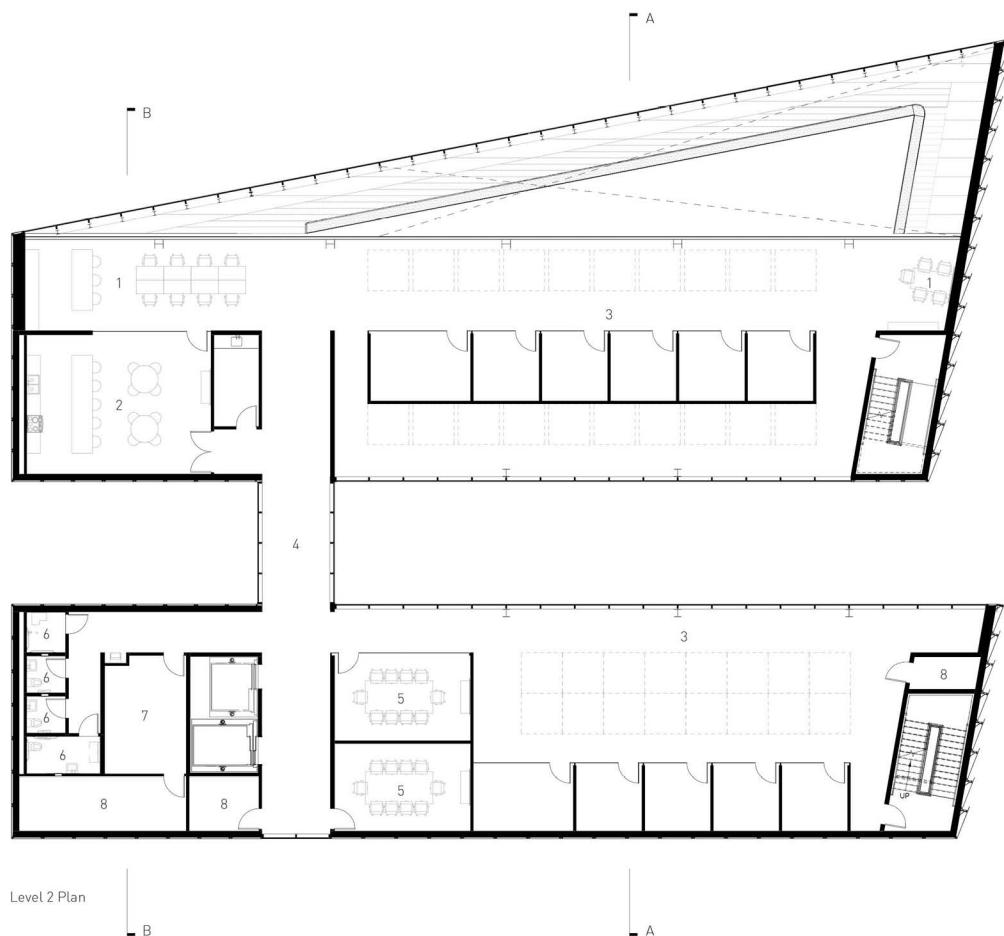
1 Lobby | 2 Classroom | 3 Bridge | 4 Maker Space | 5 Woodworking Space | 6 Restroom | 7 Storage | 8 MEP | 9 Courtyard

0 10 20

UP-350.06

Floor Plan – Level 2

- 1 Collaboration
- 2 Break Room
- 3 Office Space
- 4 Bridge
- 5 Conference Room
- 6 Restroom
- 7 Storage
- 8 MEP



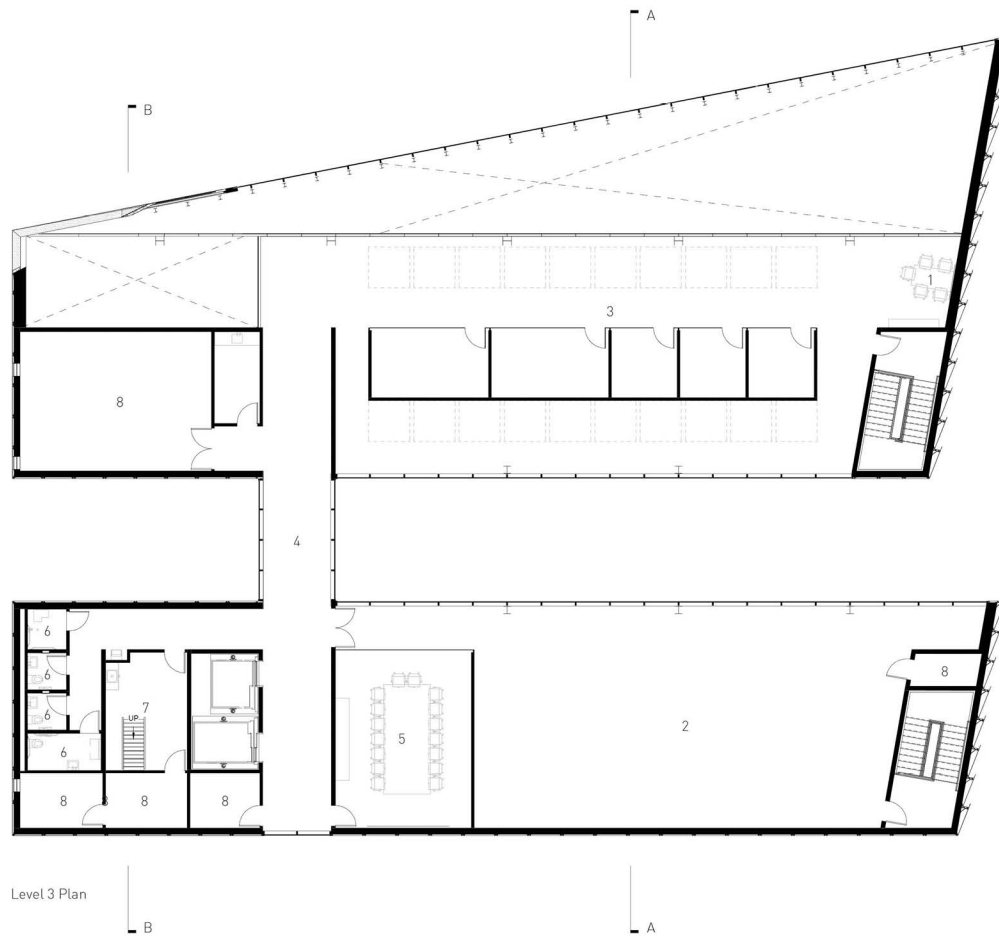
1 Collaboration | 2 Break Room | 3 Office Space | 4 Bridge | 5 Conference Room | 6 Restroom | 7 Storage | 8 MEP

0 10 20

UP-350.07

Floor Plan – Level 3

- 1 Collaboration
- 2 Mockup Space/
Virtual Reality Laboratory
- 3 Office Space
- 4 Bridge
- 5 Conference Room
- 6 Restroom
- 7 Storage
- 8 MEP



Level 3 Plan

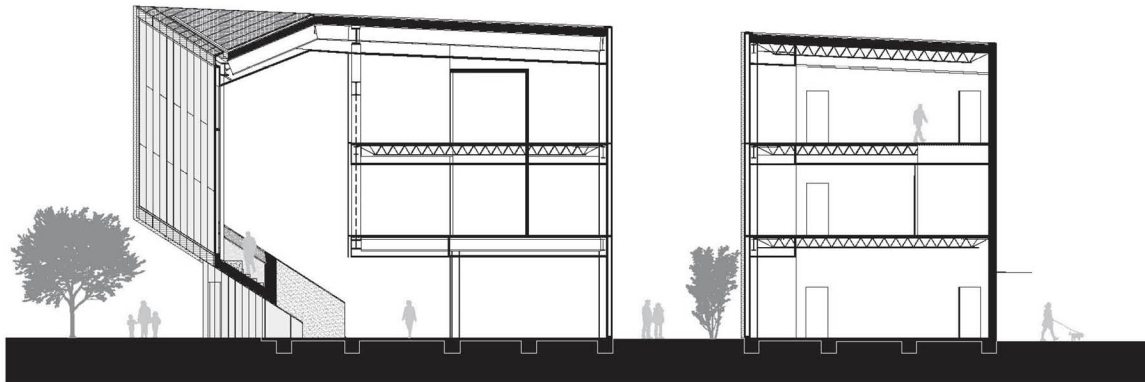
1 Collaboration | 2 Mockup / Virtual Reality Space | 3 Office Space | 4 Bridge | 5 Conference Room | 6 Restroom | 7 Storage | 8 MEP

0 10 20

UP-350.08

Building Section A

View looking east.

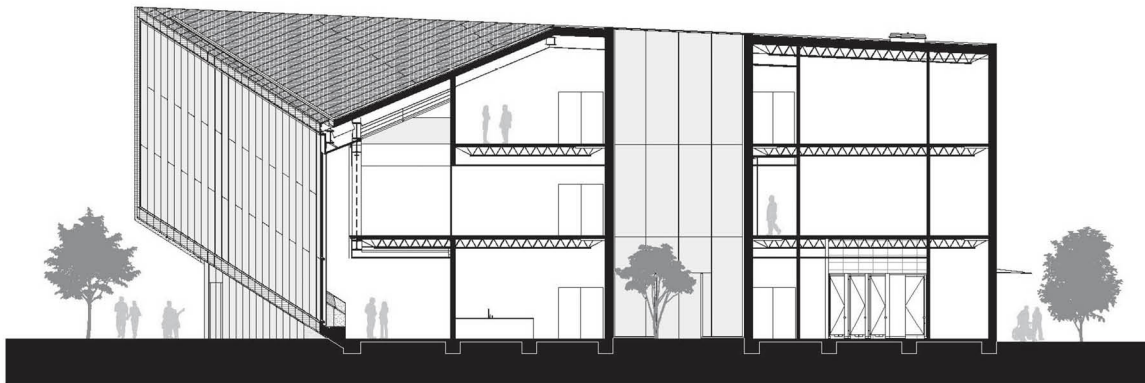


Building Section A

UP-350.09

Building Section B

View looking east.



Building Section B

UP-350.10

Lobby Atrium

The lobby atrium space serves as a welcoming entry into the building off of the Highway, as well as serving as pre-function space for the Classrooms on Level 1. A cantilevered concrete stair element within the lobby serves as social gathering space for organic worker interactions.



UP-350.11

Flexible Open Office Spaces

The open office spaces on Levels 2 and 3 of the building are filled with a mixture of workstations and breakout collaboration zones throughout. Floor-to-ceiling glazing allows the space to be washed from two sides with natural, diffused daylight, allowing the space to be a bright and airy environment for the workers year-round.



UP-350.12

Maker Space

The Maker Space is at the heart of the Center for Innovation. Here, a full-scale woodworking and metal shop are combined with a prototyping lab to generate new forms of medical technologies, which, in turn are tested within the upstairs Mockup and Virtual Reality lab. The cutting-edge technologies developed in the Maker Space allow the Hospital to create precision-focused, patient-centered solutions to keep patients healthier and providers more efficient.



UP-350.13

Courtyard View

While the first phase of the building will be comprised of two programmatic bars separated by a landscaped inner courtyard, the future Phase II for the project ultimately includes a third programmatic bar which will plug into the first phase of work seamlessly. Large expanses of north facing and self-shaded glazing will allow the workspaces to be washed in diffused natural daylight. A minimal palette of polished concrete floors, glass and white gypsum board walls, and acoustic fabric panel ceilings complete the interiors while a clear anodized aluminum plate panel rainscreen system clads the exterior of the building.

The metallic skin evokes a lightness for the exterior reading of the building where the sky and landscape gently reflect off of the surfaces of the building.



Project Name:
Ochsner Center for Innovation

Project Location:
New Orleans, LA

Owner/Client:
Ochsner Hospital

Architect(s) of Record:
Victor F. “Trey” Trahan, III, FAIA
Trahan Architects
701 Poydras Street, Ste. 150P
New Orleans, LA 70139

Project Team:
Trey Trahan, FAIA
Brad McWhirter, AIA
Conner Bryan (In Memorium)
James Babin, AIA
Shelby Downs
Robbie Eleazer, AIA
Jarri Hasnain
Michael Pryor
David Schneider

Landscape Architect:
Asakura Robinson

Consultants:
Morphy Makofsky, YKMH Consulting,
Jensen Hughes, The Boundary

General Contractor:
TBD

Photographer(s):
(please list which specific slides get credited to each
photographer(s) listed).
The Boundary: 2, 10, 11, 12, 13

UP-350.14

Credit Slide