

### Program Summary:

This project sought to redefine the salon experience by simplifying and celebrating critical design elements while improving the client experience and process.

### Program Statement:

From the beginning, the architect worked with the client to create a new salon typology which would improve upon the experience of the client. Through careful consideration and research of how the traditional salon operates, we were able to celebrate the simplicity of the process and create a unique design element that serves both the client and the employee, the salon station.

From the inside out, every element was designed to function in away that makes the experience seamless. The salon stations are double loaded with mirrors, drawers, 2 types of lighting, electrical outlets, phone charging stations, purse/ coat hooks and a ledge for drinks or other client items. Detaching all these elements from the floor allows the space to achieve a level of cleanliness that would otherwise feel cluttered and disrupt the flow of the space. The orientation of the salon stations are inspired by the infinite mirror effect commonly found in salon layouts, but instead of achieving this through mirrors, the floating stations and their symmetry deliver a similar perception to guests.

The second floor studio space design holds cross-functional capacity for residential comforts, salon operations, and a studio space designed for stylist training and marketing photography.

## A-225.01

Building Area: (sf)  
**2,700**

Cost per Square Foot:  
**\$260**

Construction Cost  
**\$700,000**

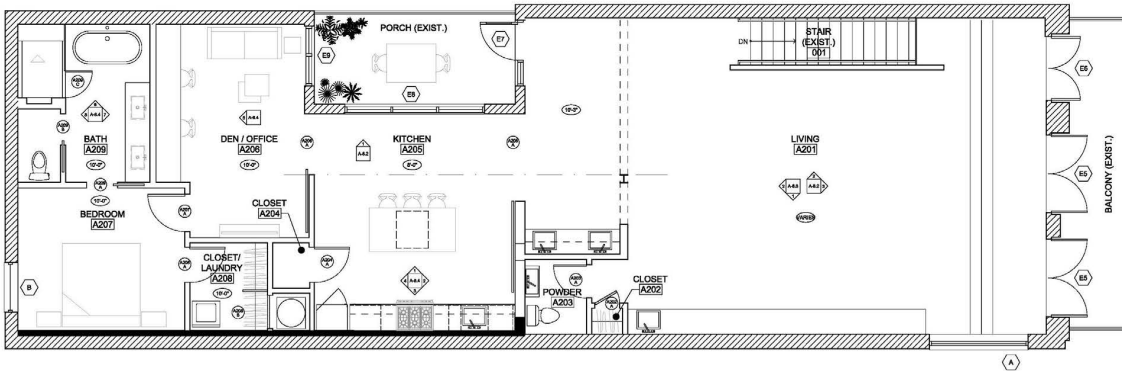
Date of Completion:  
**August 2018**

# A-225.02

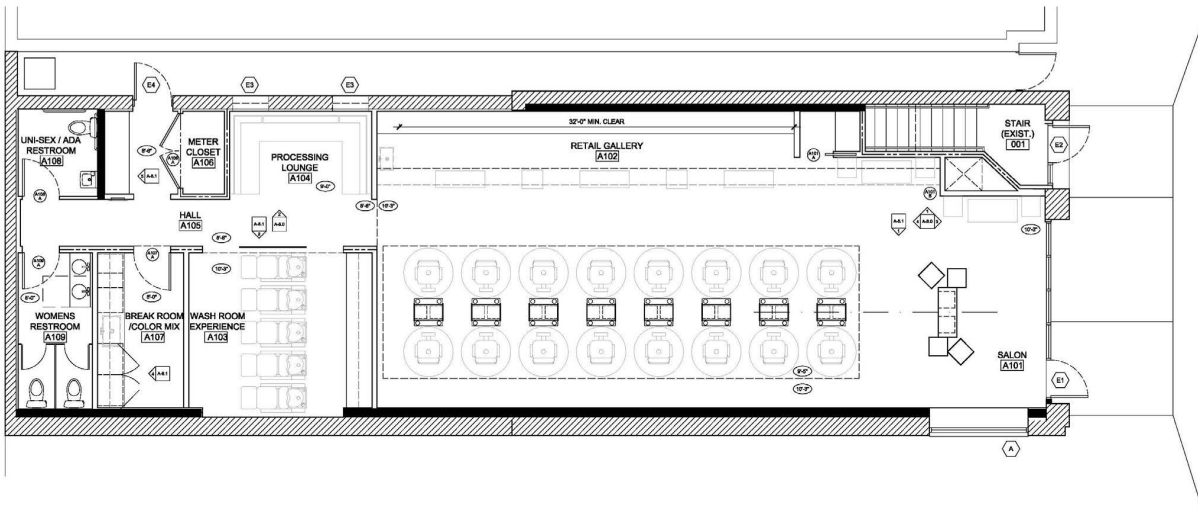
## Floor Plan

Below: Ground floor plan which houses the salon.

Above: Second floor plan which houses the live-work studio.



2  
A-2.1  
Scale 1/8" = 1'-0"



1  
A-2.1  
Scale 1/8" = 1'-0"

633 CARONDELET STREET

# A-225.03

View from Carondelet

Located in the heart of the CBD in New Orleans, the building engages traffic of all kinds and invites guests into the building through expansive storefront windows and openings.





# A-225.04

View from Carondelet (cont.)



# A-225.05

## Entry

Upon entering the salon, your eye is drawn to the custom floating stations and through the space. The portion of the main space which holds the product shelving was designed to embody the character of a gallery rather than typical retail shelving.



# A-225.06

Custom Designed Floating Salon Stations

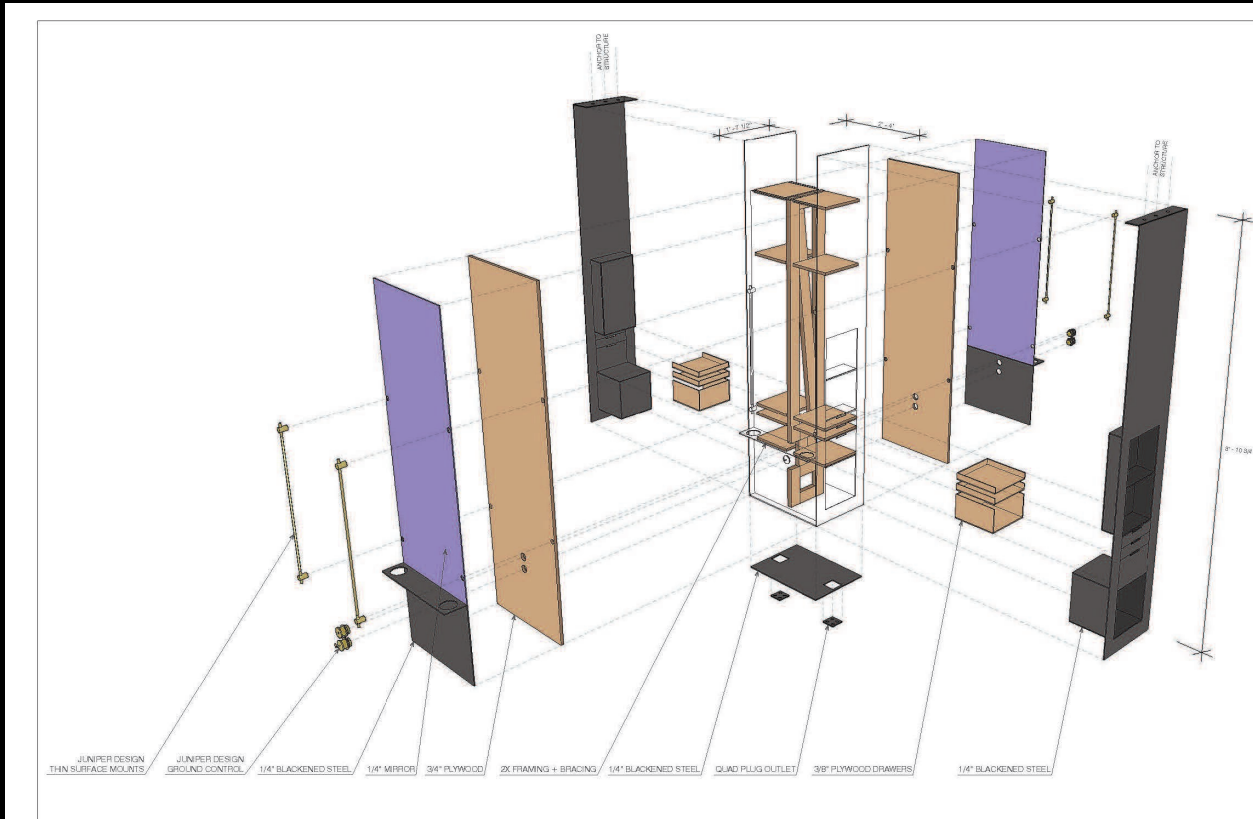
The design and layout of the floating salon stations are a nod to the sensation of the endless mirror effect commonly found in salons, without any mirrors reflecting off each other in the space.



# A-225.07

## Exploded Axonometric Floating Salon Station

Exploded axonometric of materials and structural design for floating salon stations. The design aided to better communicate the salon station components to the client and fabricators.







## A-225.08

Lobby Before and After

Upon entering the washroom experience at the salon, clients are exposed to softer light and textures, plus luxurious lounge-style wash stations.





# A-225.09

## Studio

This multi-use space is designed to accommodate salon, administrative, and private use when needed. Lots of natural light make the space flexible for different uses.





## A-225.10

Studio cont.

The design celebrates the existing structure by exposing the roof structure that compliments the new floors.

# A-225.11

Studio cont

Custom-built training bar for new stylists at the salon and for quick access to the studio space when needed for photography.





Project Name:  
Paris Parker Salon & Spa

Project Location:  
633 Carondelet St., New Orleans, LA, 70130

Owner/Client:  
Neil Corporation

Architect(s) of Record:  
(names and addresses)  
John C. Williams  
John C. Williams Architects, LLC (Williams  
Architects)  
824 Baronne St., New Orleans, LA 70113

Project Team:  
Williams Architects: Dixon Jelich, John C.  
Williams  
No longer with firm: Gabby Black, Lindsey Wild

Landscape Architect:  
N/A

Consultants:  
IMC Engineers, Walter Zehner & Associates Inc.

General Contractor:  
Hensen Development & Construction, Inc.

Photographer(s):  
(please list which specific slides get credited to  
each photographer(s) listed).

Neil Alexander: .03, .05 (top), .06, .08 (top) .09

Michael Palumbo: .04, .05 (bottom), .08  
(bottom), .10, .11

## A-225.x

### Credit Slide

This slide will not be seen by the judges. It replaces what in past years has been in the sealed envelope.

Please fill out the information requested to the left. As with other slides please set the correct Entry Number above; OK to leave slide# as "x"

Some of this information will be added to the slides when used for the Awards Presentation at the AIA Louisiana Convention.

Note: on this slide if you run out of space please adjust font size as necessary or move more information to the second column.

Please submit 2 Power Point Submissions online as indicated on the instructions sent to you with your entry number (one w/credit slide and one without).