

### Program Summary:

This project transforms a 56-square-foot underutilized niche at the home's entryway into a refined, climate-controlled wine cellar, seamlessly integrating form, function, and aesthetic.

### Program Statement:

This 56-square-foot intervention transforms a once-forgotten entry alcove into a climate-controlled wine cellar that merges architecture, art, and ritual. The client sought not only functional storage for an expanding collection, but a striking, sculptural feature to anchor the home's arrival experience.

Encased in seamless ½" glass with a central pivot door, the cellar is both threshold and object—transparent yet commanding. Custom-designed white oak racks form a precise, rhythmic grid that maximizes storage without visual weight. A textured white stone veneer evokes the timelessness of old-world cellars while rooting the space in tactile materiality. Subtle LED lighting grazes floor and ceiling planes, casting gentle shadows across the stone to create a luminous, gallery-like atmosphere.

Minimalist in form but rich in architectural detail, the cellar integrates effortlessly with the home's interior architecture. The existing wood floor was preserved to maintain spatial continuity, while the clean-lined insertion redefines the niche as a refined hospitality experience. With a final capacity of 504 bottles (serendipitously mirroring the local area code) the design is as personal as it is precise.

What was once an overlooked transition space now becomes a destination: a contemplative showcase for collection, story, and sense of place.

## SP-15.01

Building Area: (sf)  
**56 SF**

Cost per Square Foot:  
**Confidential**

Construction Cost  
**Confidential**

Date of Completion:  
**9/7/2024**



**BEFORE**

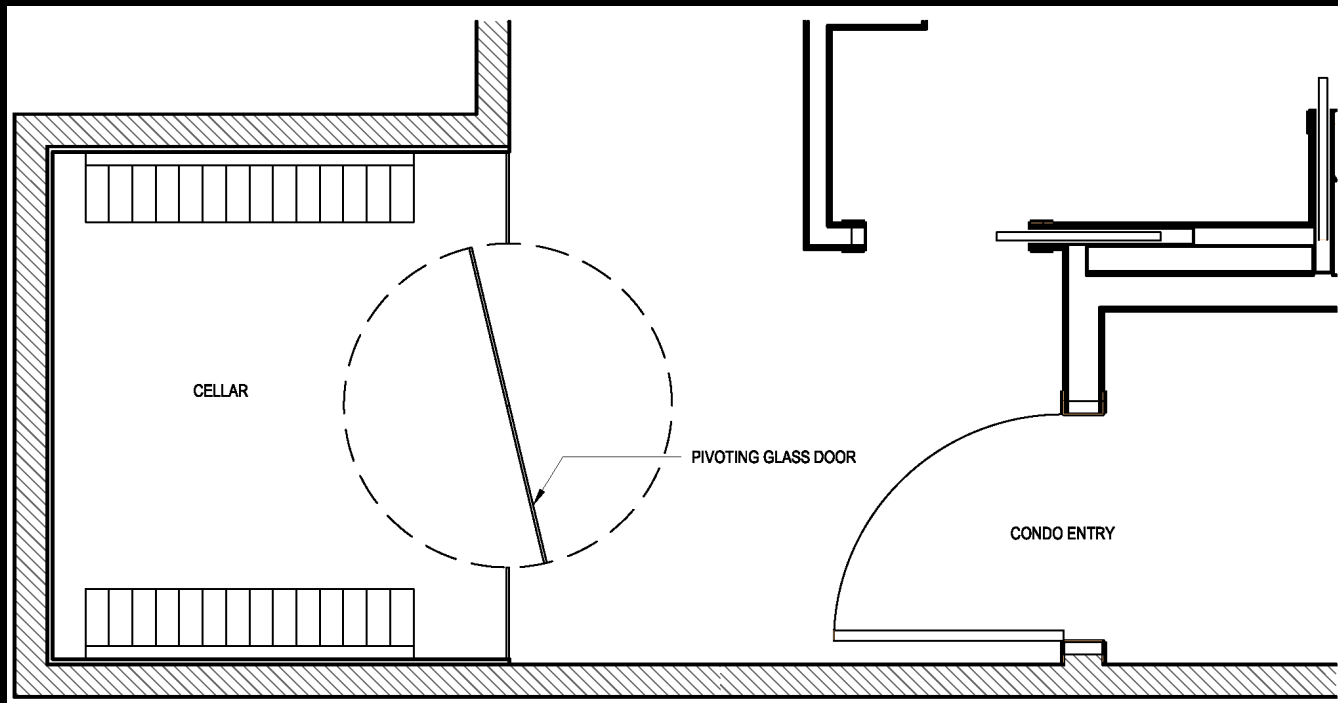


**AFTER**

## SP-15.02

### INTRODUCTION: REIMAGINATION OF UNDER-UTILIZED SPACE

In a thoughtful reimagining of unused space at the home's front entrance, this bespoke wine cellar transforms a previously idle alcove into a striking architectural feature.



## SP-15.03

INTRODUCTION: REIMAGINATION  
OF UNDER-UTILIZED SPACE  
(CONTINUED)

This project exemplifies how underutilized square footage can be effectively designed and revitalized to create a welcoming and spirited entry.



## SP-15.04

### A PERSONAL CONNECTION

"Over time, our wine collection outgrew the scattered countertop-height refrigerators placed throughout our home. As frequent hosts in our downtown New Orleans residence, we wanted a solution that combined functionality with a strong visual statement. We identified an unused 8' x 7' nook just off the entry foyer and worked with our architect to transform it into a dedicated wine room. The result is a striking hospitality feature that greets guests with both purpose and style."

-- Client





## SP-15.05

TRANSPARENCY &  
PERSPECTIVE: ILLUMINATED BY  
DESIGN

Minimal light in a wine cellar is essential for the longevity of wine and its aging process. The cellar is illuminated only when entertaining guests to share the celebration of the collection, and for moments of selection.

Framed in glass, it offers a unique vantage point from the outside, transforming the cellar into a curated display and inviting a new kind of accessibility and perspective.

Here, the wine is not hidden away; it becomes part of the daily experience of the home, both visually and spatially.



## SP-15.06

### AN ARTICULATED VIEWPOINT

The wine cellar is bordered by a white painted beveled wood frame which articulates the viewpoint.

On either side of the door, the width of the glass is scaled to match the shelving beyond. The seams practically disappear.

Precision detailing and strategic coordination with contractors and fabricators allowed us to deliver on both the client's aesthetic and performance goals. The oversized glass panels were carefully transported and installed without compromising design intent. The pivoting glass door was custom-engineered to self-level and align flush on closure, eliminating visible hardware and preserving the clarity of the installation. Mechanical systems were hidden and rerouted discreetly, and lighting was carefully integrated to enhance both form and function without interfering with wine preservation.

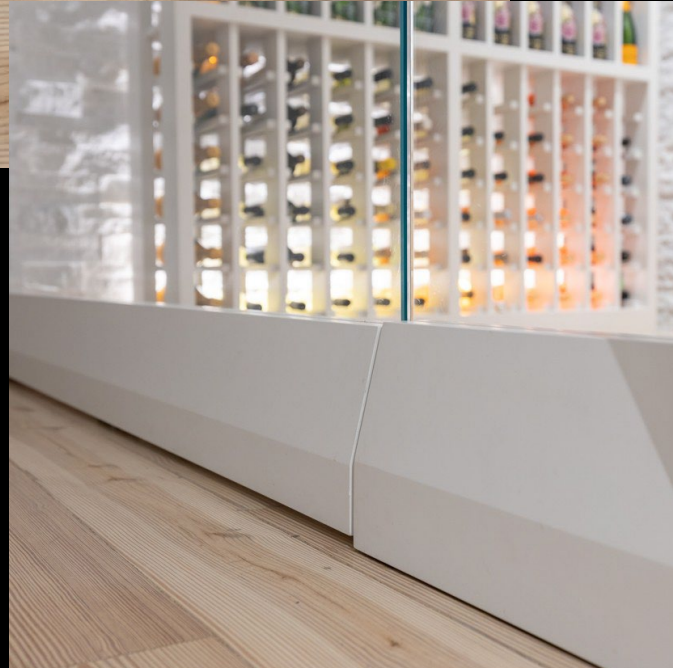


## SP-15.07

### A SEAMLESS THRESHOLD

Precision detailing and strategic coordination with contractors and fabricators allowed us to deliver on both the client's aesthetic and performance goals.

The oversized glass panels were carefully transported and installed without compromising design intent. The pivoting glass door was custom-engineered to self-level and align flush on closure, eliminating visible hardware and preserving the clarity of the installation. Mechanical systems were hidden and rerouted discreetly, and lighting was carefully integrated to enhance both form and function without interfering with wine preservation.







## SP-15.08

### A SEAMLESS THRESHOLD (CONTINUED)

The glass is designed to appear seamless. A solid 5-foot-wide panel of  $\frac{1}{2}$ " glass rotates from a center pivot point as the way of entry.

The grand piece of glass continues 360 degrees, enabling easy movement in and out. Additionally, the door impressively self-levels as it gently closes into place, aligning perfectly flush.





## SP-15.09

FRAMED IN LIGHT & STONE:  
INTENTIONAL MATERIALS

Encased in glass, the cellar balances openness and containment, serving as both a storage solution and a spectacle. Custom-built white racks provide seamless symmetry, illuminated by integrated accent lighting that highlights the curated collection within.

The textured white stone wall offers an intentional contrast to the clean lines of the shelves, while existing pale wood flooring enhances the cellar's grace. It reflects the terroir—not just of the wines it holds, but of the carefully chosen materials that speak to place, permanence, and provenance.



## SP-15.10

### THE ARCHITECTURE OF A NUMBER

After the wine cellar was in use, the owner was curious about exactly how many bottles the cellar could accommodate. The total count is 504. The number 504 is also the area code of the home's location. During the post-Hurricane Katrina era, locals often used the term "504-ever" as a proud symbol of their beloved city.

This was an uncanny and surprising coincidence, adding to the charm of the urban cellar.