

Program Summary:

This Baton Rouge home has a style inspired by the coast of California. It is a two-story home with 3 bedrooms and 2½ baths.

Program Statement:

The design was driven by the client's desire to have views and easy access to the outdoor living area, patio, and pool from the main living spaces. Details from the exterior, like the curves of the parapet above the front porch and the brackets supporting the protruding study space, are woven into the design throughout the home. From the cornices in the living room and the marble below the kitchen hood to the exterior entrance into the patio, these elements help tie the house together.

R250.01

Building Area: (sf)
5,343 SF

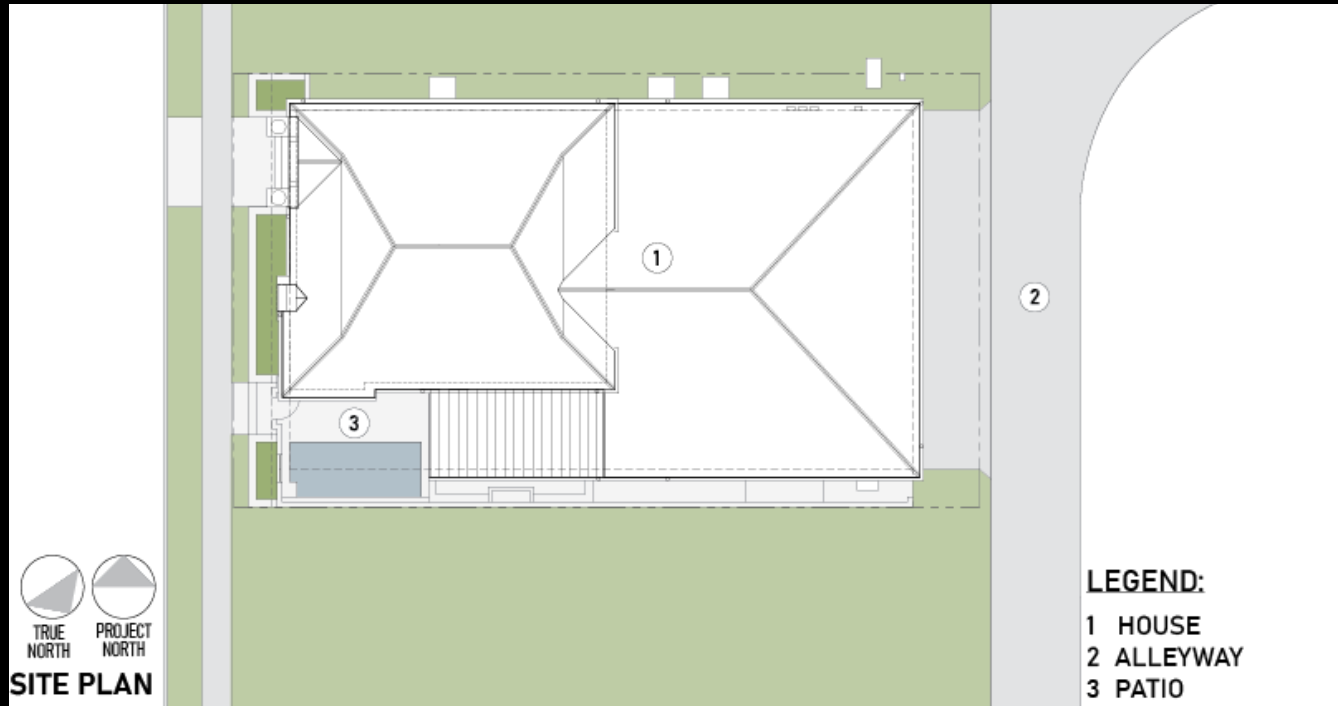
Cost per Square Foot:
Confidential

Construction Cost
Confidential

Date of Completion:
April 2023

R250.02

The house is located on a 0.13 acre lot in a planned neighborhood. It backs up to an alleyway, where the garage is located allowing the architectural elements in the front of the home to be uninterrupted. From the main street, the house has a front porch that leads to the foyer as well as a shuttered gate to allow access to the courtyard. Both entrances are framed by brick landscape boxes that match the exterior of the house. Given its California coastal inspiration, the exterior of the house consists of stucco and lap siding which are both painted the same soft white color and pre-cast stone framing the main entrance as well as the window above it.



R250.03

As you enter from the front porch through a steel and glass door unit, you enter the foyer which has an open stairway and access to the main hallway. The hall is the spine of this house and connects you to all the spaces of the 1st floor. You first pass the 'great room' which contains the living room, dining area, and the kitchen. Directly across this opening is the wet bar that is integrated below the stairs. Continuing down the hall takes you to the mud room and laundry room, which are located right off the garage entrance. It also takes you to the primary suite where the bedroom includes a sitting area, and the bathroom includes a freestanding tub and large shower.



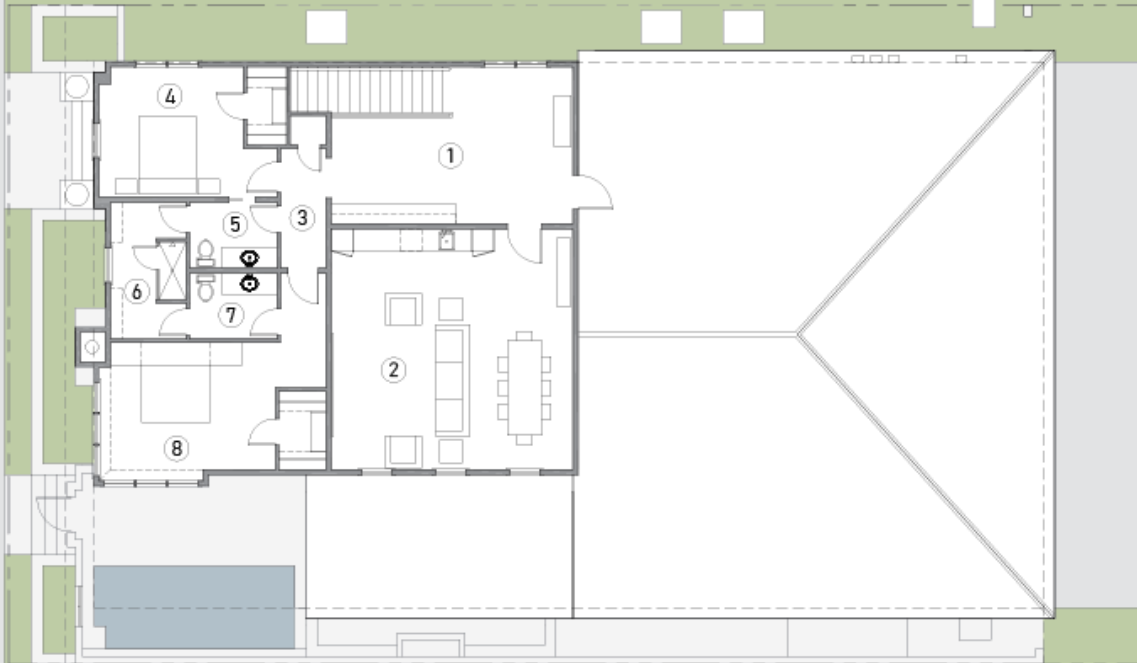
LEGEND:

1	FRONT PORCH	8	PANTRY	15	PRIMARY CLOSET
2	ENTRY FOYER	9	POWDER BATH	16	GARAGE
3	WET BAR	10	LAUNDRY	17	OUTDOOR LIVING
4	HALL 1	11	MUD ROOM	18	PATIO
5	LIVING ROOM	12	HALL 2	19	POOL
6	DINING AREA	13	PRIMARY BED		
7	KITCHEN	14	PRIMARY BATH		

1st FLOOR PLAN

R250.04

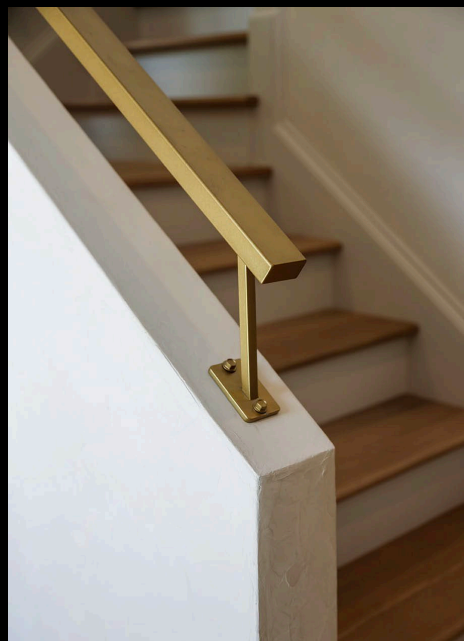
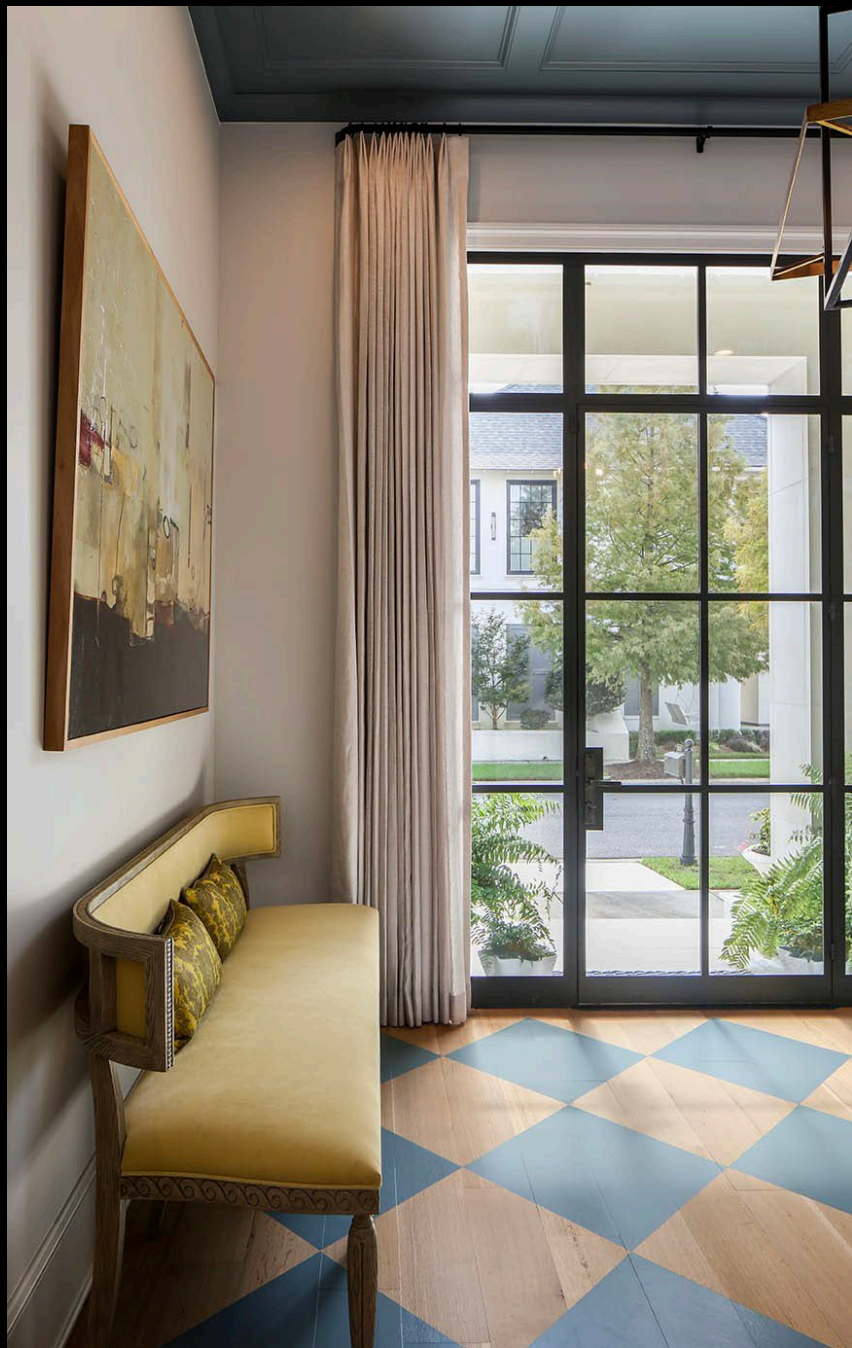
Walking up the stairs you come upon a large landing that can also serve as an exercise area. Right off the exercise room, there is a playroom large enough for a tv area, game table, and bar. On the other end of the exercise room is a hall that connects to two more bedrooms, which share the 2nd floor bathroom. One of the bedrooms, which can also serve as a study due to its murphy bed, cantilevers over the 1st floor and has a wide corner of windows to look over the nearby park.



2nd FLOOR PLAN

LEGEND:

1	EXERCISE	5	VANITY 1
2	PLAYROOM	6	SHARED SHOWER
3	HALL	7	VANITY 2
4	BED 1	8	BED 2/STUDY



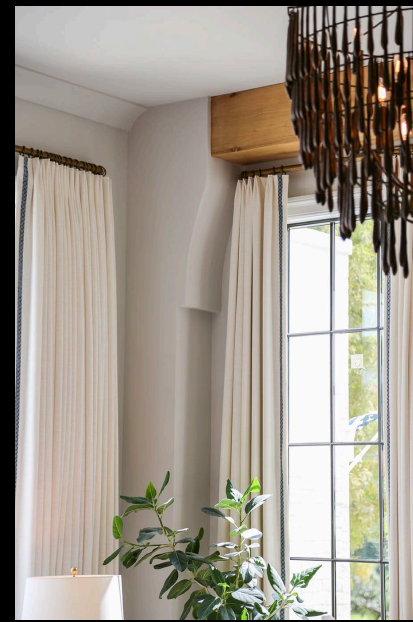
R250.05

As you enter the foyer through the steel door, you look up to see a paneled ceiling painted a dark teal color. The teal color is repeated on the white oak wood floor as a checkered pattern that helps define the space. In the foyer is the staircase with white oak treads and a plaster baluster with a delicate brushed gold handrail connected to it.



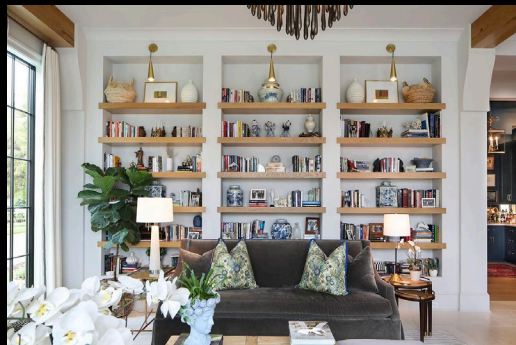
R250.06

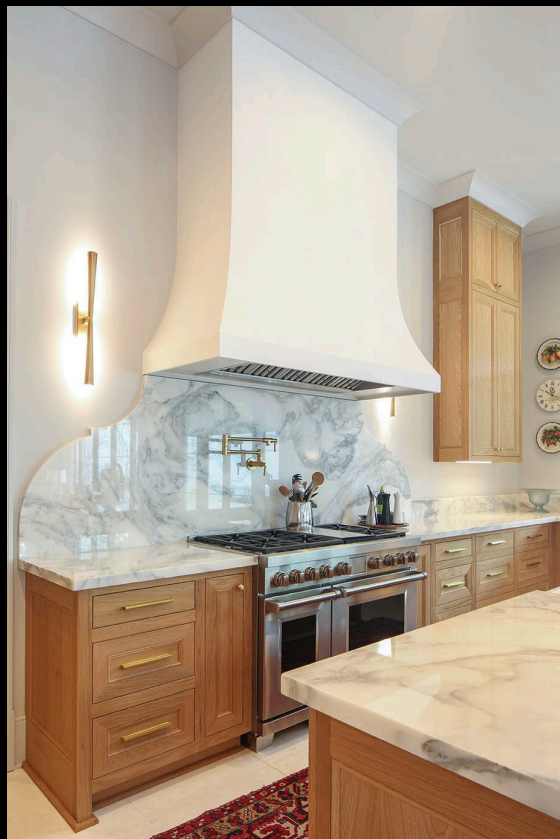
Continuing past the foyer, a hallway lined with white oak beams and flooring becomes the main circulation through the house. To the left, an opening finished in drywall features corbeling that brings the curves of the parapet into the house. Beyond this opening is the wet bar that is tucked under the stair which is expressed in the ceiling design. A powder bath located further down the hall is decorated with detailed wallpaper and trim painted an accent color to match.



R250.07

Directly across from the wet bar is the opening for the 'great room' where the house transitions to a stone flooring and where the living room, dining area, and kitchen are located. The corbels from the wet bar are repeated in this room, supporting white oak beams that define each space. The white oak finish is also carried through the living room with floating shelves that are recessed into the walls. On the opposite side of the room, large windows and French doors framed by the corbel pilasters provide plenty of natural light into these spaces that look out to the patio, pool, and outdoor living area.





R250.08

On the opposite end of the 'great room', the kitchen makes a statement with ceiling height white oak cabinetry. It also includes a large island and a serving window that opens to the adjacent outdoor living area. A curving element once again makes an appearance in the marble backsplash that connects to the hood. To the left of the stove is the entrance to a large pantry located behind the kitchen. It includes display shelves as well as plenty of closed cabinetry for storage.



R250.09

Connected to the great room is the outdoor living area and courtyard. This includes an outdoor kitchen as well as a sitting area that open to the patio and cocktail pool. The kitchen has a decorative tile wall that spans to the ceiling and ties in with the tiles on the nearby wall fountain as well the pool. Curved forms used inside are repeated on the outside pool and courtyard. A shuttered gate allows access to the courtyard from the street for guests, and the adjacent shuttered opening brings in the southern breeze.



R250.10

Continuing down the main hallway leads you to the primary suite. The white oak theme is continued with white oak doors, which are seen throughout the 1st floor, featuring brushed gold hardware with glass knobs. As you enter through double doors, you notice a freestanding tub centered on a large window with a view to a small landscaped area outside. On either side of the tub are two matching vanities that focus your attention on the view beyond.



R250.11

Upstairs, the shared bathroom includes white oak floating shelves that match the ones in the living room. The study is color drenched in the same paint as the foyer to give a more masculine feel while offsetting the amount of natural light entering through the spray of corner windows. This space cantilevers over the 1st floor and looks out onto the neighborhood park.

