

Program Summary:

Master plan of an academic campus, rooted in classical education within a Catholic context. The plan reflects the school's ethos and curriculum of "the Trivium".

Program Statement:

Rooted in the classical liberal arts educational model of a G.K. Chesterton institution, the school's ethos centers on the pursuit of divine knowledge through the Trivium (Grammar, Logic, and Rhetoric) and the Socratic Method. Architecturally, this ethos is not just reflected but enshrined, with the Chapel positioned at the heart of the campus, serving as a physical manifestation of the school's mission of "creating Saints" by keeping God at the center of all things.

The Master Plan embraces axial and symmetrical forms, ensuring that both campus access points stand as main entries, with no back door to the campus. The Chapel, with its cruciform footprint and entrances at the ends of each axis, emerges as the focal point, thoughtfully articulating the architectural language that defines the campus.

Embracing the school's priority for a nature-based educational curriculum, we incorporate outdoor learning environments, such as an Ecological Pavilion and Amphitheater, as integral components of our design.

The Master Plan embodies the essence of a classical education within a Catholic context, resulting in a campus that ignites both the heart and mind, focused on truth, beauty, and goodness from God. It is not merely a plan; it is a declaration—a timeless "Beacon in the Field."

MP-55.01

Building Area: (sf)
39 Acres

Cost per Square Foot:
N/A

Construction Cost
N/A

Date of Completion:
April 2023



View from Central Green to Chapel

MP-55.02

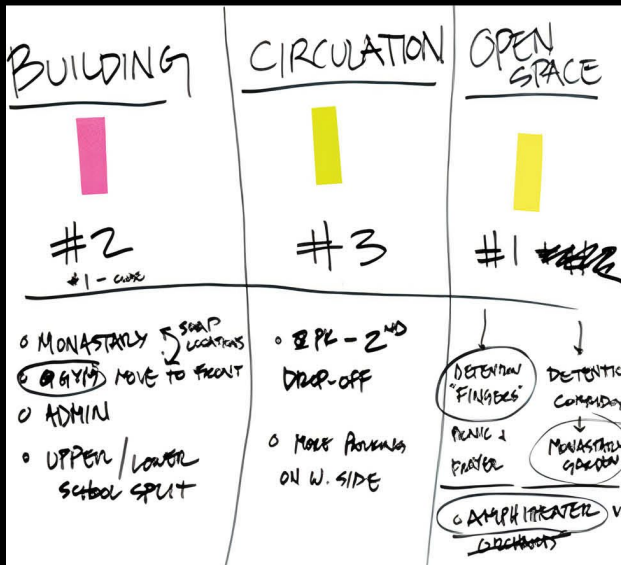
INTRODUCTION

Our team kicked off this project by hosting immersive workshops and charrettes, where we discovered an initial collective desire to create "A Beacon on the Hill."

MASTER PLANNING WORKSHOPS

These full-day workshops revealed common interests and visions for the campus:

1. Ensure the Chapel is the central anchor: The school's mission is focused on "creating Saints" by keeping God at the center of all things, and this is manifested physically by the chapel's location at the heart of the campus.
2. Reflect the philosophy of Classical Catholic Education, its organizational prerequisites, and the curriculum of a G.K. Chesterton school.
3. Ensure privacy by locating primary campus spaces near the center of the property, with recreational spaces, vehicular circulation, and parking located at the edges to help buffer views.



LAND USE MAP LEGEND

- AGRICULTURE
- RESIDENTIAL
- CIVIC
- COMMERCIAL
- PROJECT BOUNDARY
- PROPERTY LINE
- OVERHEAD POWERLINE
- UNDERGROUND GASLINE
- UNDERGROUND FIBERLINE
- FIRE HYDRANT
- UTILITY POLE
- LIGHT POLE



MP-55.03

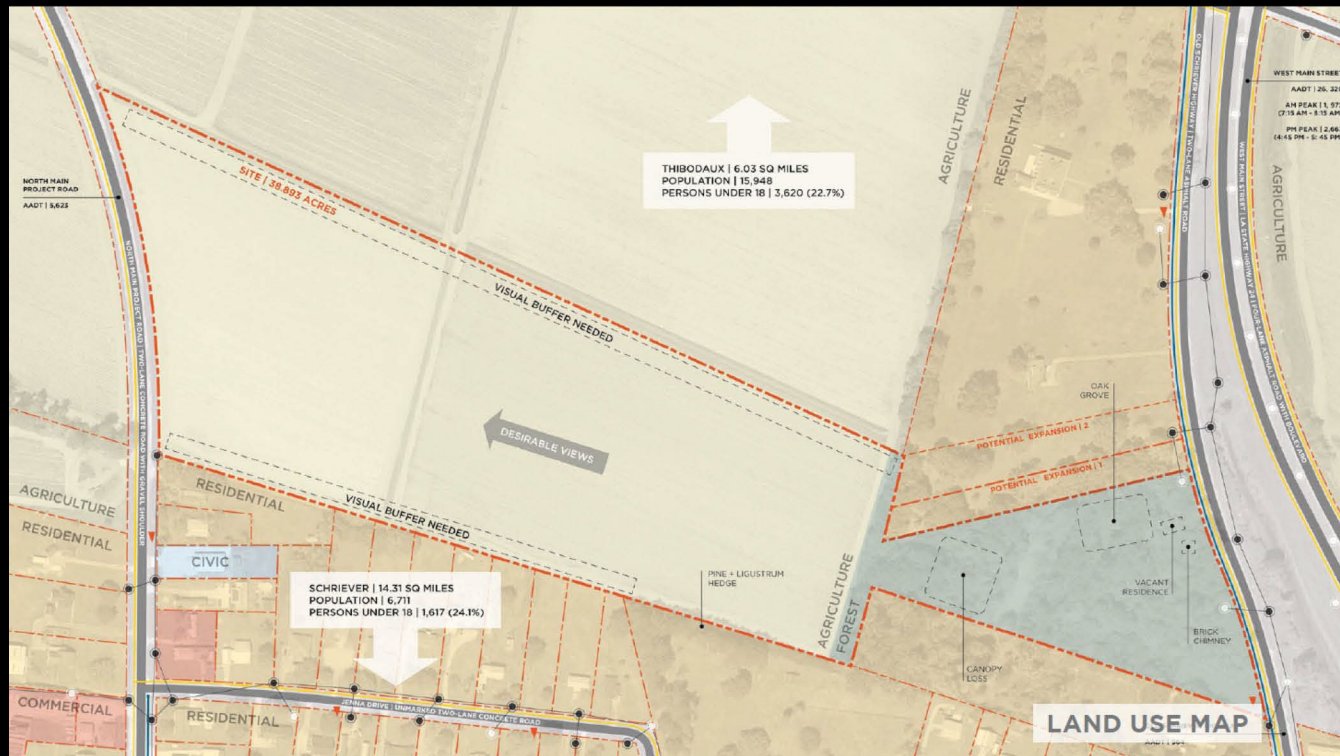
EXISTING CONDITIONS & INTENTIONALITY OF SITE SELECTION

Multiple sites were considered, and utilities, views, privacy, hydrology, soil, and zoning were thoroughly studied.

The selected site was the most viable option due to:

- Location
- Ease of access
- Beauty
- Development versatility

The 39-acre property is comprised of two distinct landscape characteristics: a working sugarcane field, and a densely forested area with a wetland in the center.



MP-55.04

THE MASTER PLAN: DESIGN INFORMED BY CURRICULUM

The school's pedagogy is based on the Trivium (Grammar, Logic, Rhetoric) and is taught in the Socratic Method.

It is envisioned that older students on campus will mentor younger students, and the arrangement of the educational spaces should encourage these interactions. The Upper and Lower Schools face each other on opposite sides of an open space, and together with the Chapel define the Central Green.



MASTER PLAN LEGEND

- 1 LOWER SCHOOL (1st-7th)
- 2 UPPER SCHOOL (8th-12th)
- 3 CHAPEL
- 4 PRE-K + K SCHOOL
- 5 CULTURAL CENTER
- 6 COURTYARD
- 7 MONASTERY
- 8 REFECTORY
- 9 FIELD HOUSE
- 10 STABLE
- 11 ECOLOGICAL PAVILION
- 12 AMPITHEATER
- 13 STAFF COTTAGES
- 14 EXISTING WETLAND
- 15 BIO-DETENTION BASIN
- 16 PRE-K + K PLAYGROUND
- 17 EQUESTRIAN CENTER





MP-55.05

AXIS & SYMMETRY

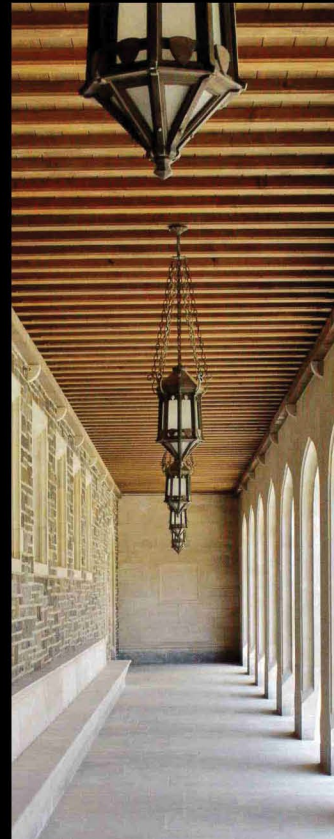
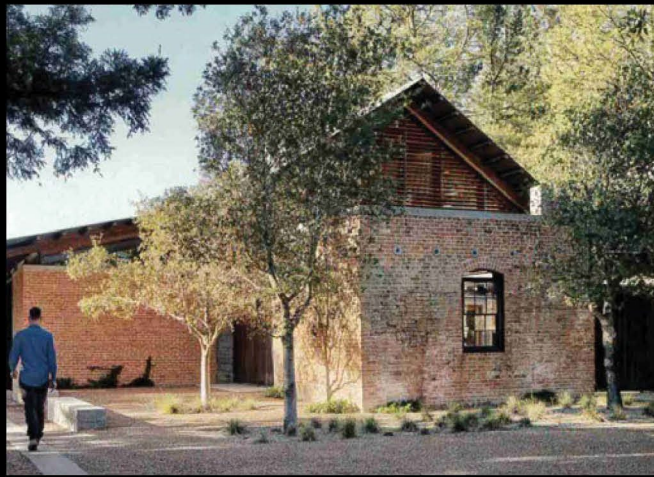
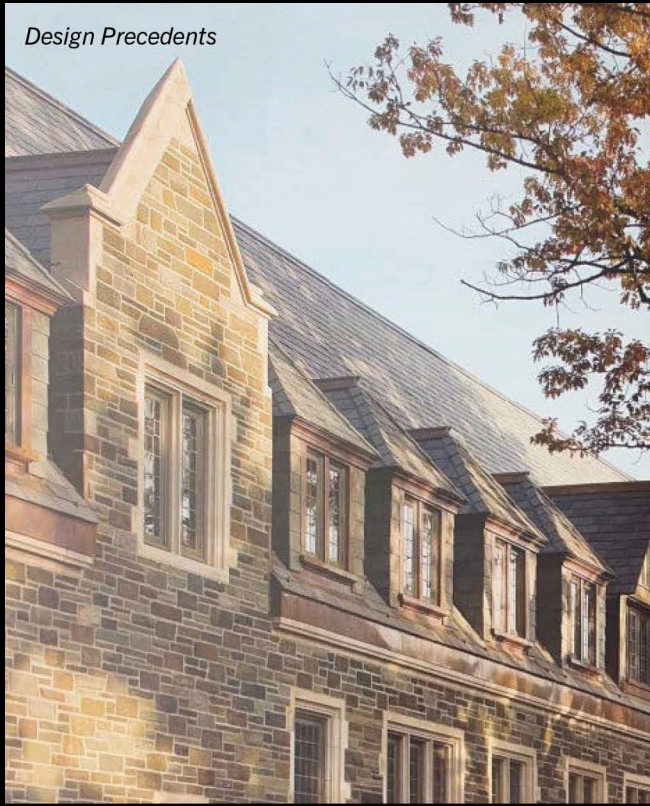
To effectively support and reflect the mission of a classical education in a Catholic context, we realized administration must be positioned at the core of the campus. These functions should be centralized and accessible.

The master plan reflects axial and symmetrical forms that allow both campus entries to be main entrances – there will be no back door to the campus.

The axial and symmetrical plan sets a pattern that is articulated throughout the building forms and designs.



Design Precedents



MP-55.06

ARCHITECTURE REFLECTIVE OF
A CLASSICAL EDUCATION IN A
CATHOLIC CONTEXT

The design team shared numerous precedents with the stakeholders to understand their expectations and vision for the campus' architecture.

The consensus led to a refined mixture of classical design infused with contemporary and gothic influences. Traditional and conventional materials impart the notion of originality that will endure over time, creating a strong culture and memorable experience.

The building architecture will reflect the mission of classical education in a Catholic context, creating a place that stimulates both the heart and mind.

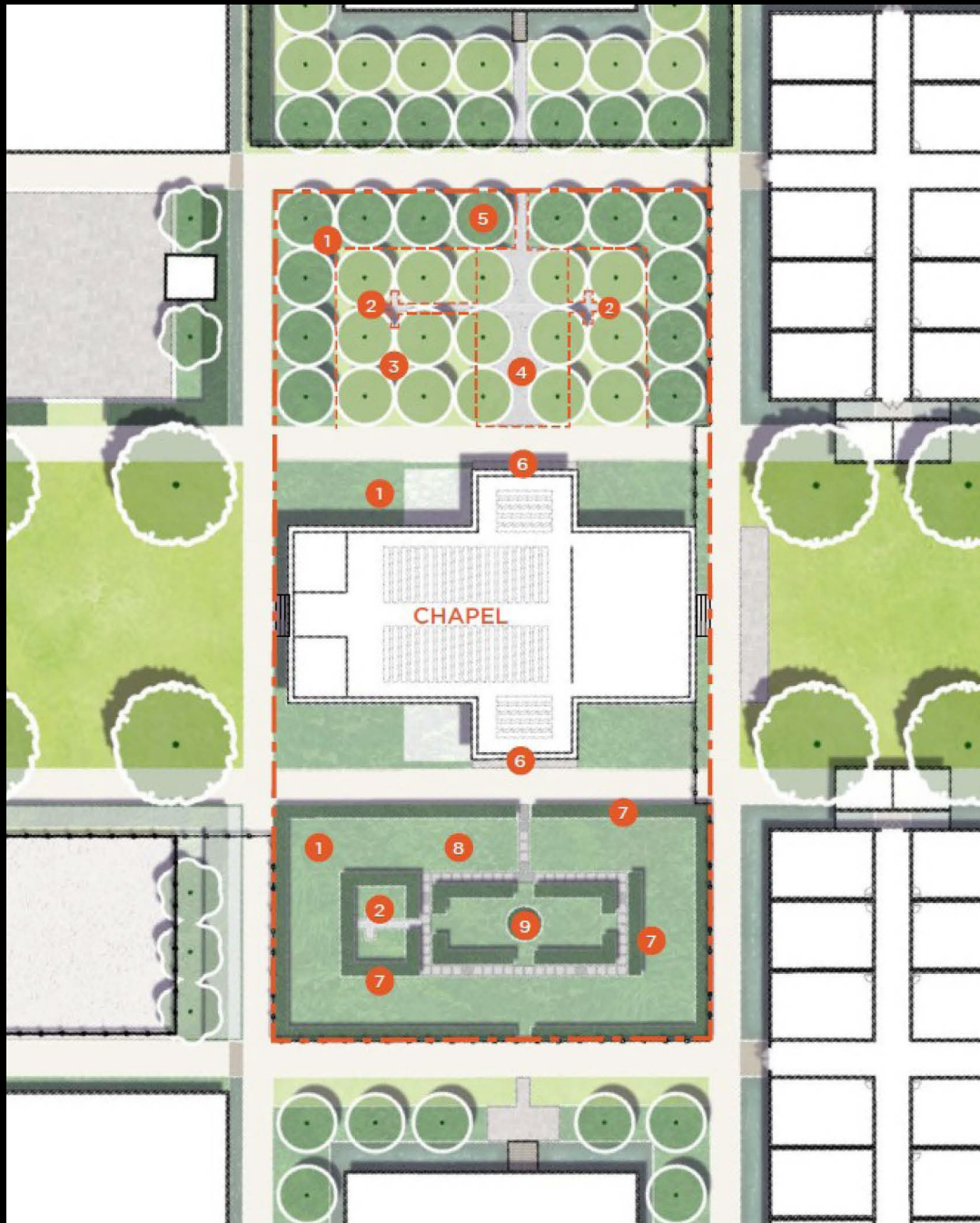
MP-55.07

ECCLESIASTICAL CORE

The Chapel, with its cruciform footprint and entrances at the ends of each axis, becomes the logical central and visual focus that expresses the design vocabulary for the campus architecture.

Open spaces on the east and west sides of the Chapel are large lawn areas, designed to keep the primary views to the Chapel unobstructed. Garden spaces to the north and south are meant to complement the Chapel, focusing on providing more intimate, contemplative experiences.

- 1 | Low Plantings
- 2 | Seating Nook
- 3 | Lawn
- 4 | Gravel Plaza
- 5 | Ornamental Tree Grove
- 6 | Entrance Plaza
- 7 | Evergreen Hedge
- 8 | Rosary Pavers
- 9 | Statue



MP-55.08

THE LOWER SCHOOL

Designed to accommodate up to two classes for each grade level from 1st to 7th, plus additional multipurpose spaces for supplemental programs like art and music.

Classroom wings connect to the central administrative spaces through glass corridors, offering views into the adjacent landscape.

Primary open spaces include a playground and an informal sport court located on the east side of the building.

THE UPPER SCHOOL

Designed to accommodate up to two classes for each grade from 8th to 12th.

Distinctive open spaces, such as the Vegetable Garden and Courtyard, allow students experience the wonders of God's creation by cultivating their own fruits, herbs, vegetables, and flowers, with more specific programming incorporated depending on the school's desired curriculum.

The area features a stormwater cistern for irrigating plants, several large tables for demonstrations, and a small potting shed for tools and material storage.



- | | | | | | |
|----------------------------|------------------------|-------------------------|----------------|---------------------|-------------------|
| 1 Boardwalk | 2 Rain Garden | 3 Entry Courtyard | 4 Seat Walls | 5 Reflecting Pool | 6 Low Plantings |
| 7 Lower School Courtyard | 8 Lower School Plaza | 9 Pedestrian Sidewalk | 10 Lawn | 11 Tree Bosque | 12 Playground |



Lower School from Central Lawn / Elevation Sketch



Lower School from Central Lawn



Upper School from Central Lawn

MP-55.09

CULTURAL CENTER

The Cultural Center will serve as an assembly center and gymnasium, providing space for physical education, theatrical events, speech nights, parent conferences, and community fundraisers and gatherings.



1 | Boardwalk
6 | Pedestrian Sidewalk

2 | Rain Garden
7 | Administrative Plaza

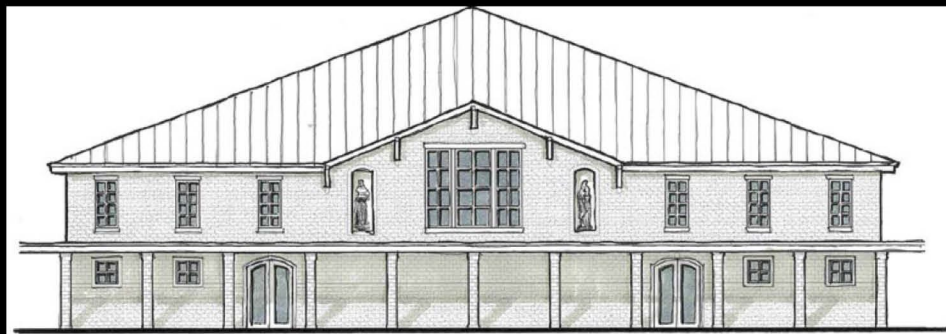
3 | Evergreen Hedge
8 | Lawn

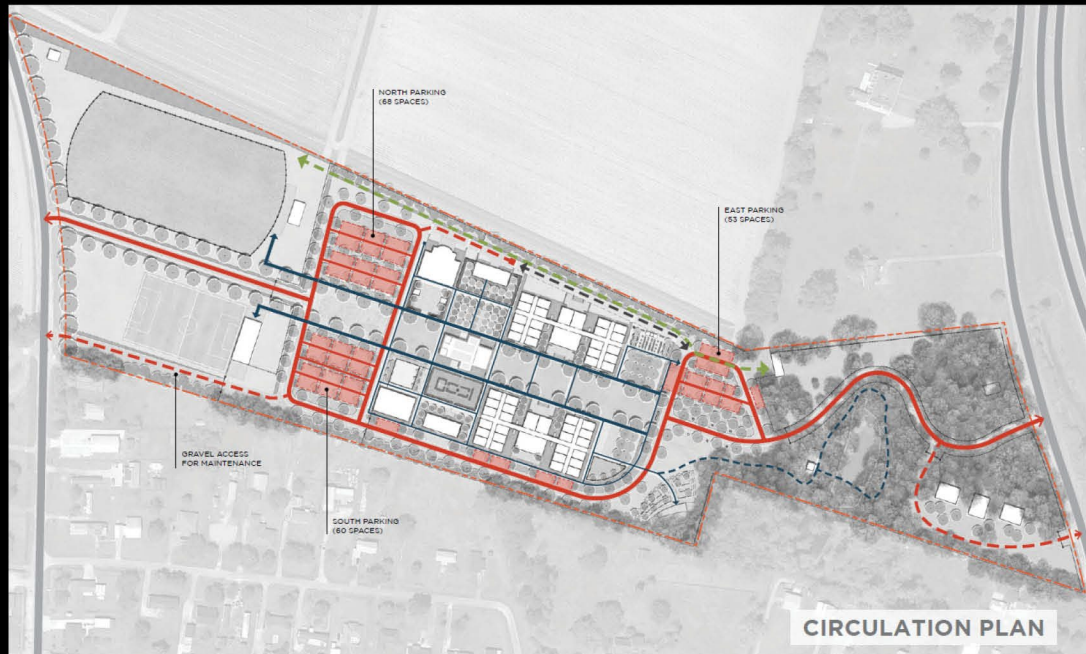
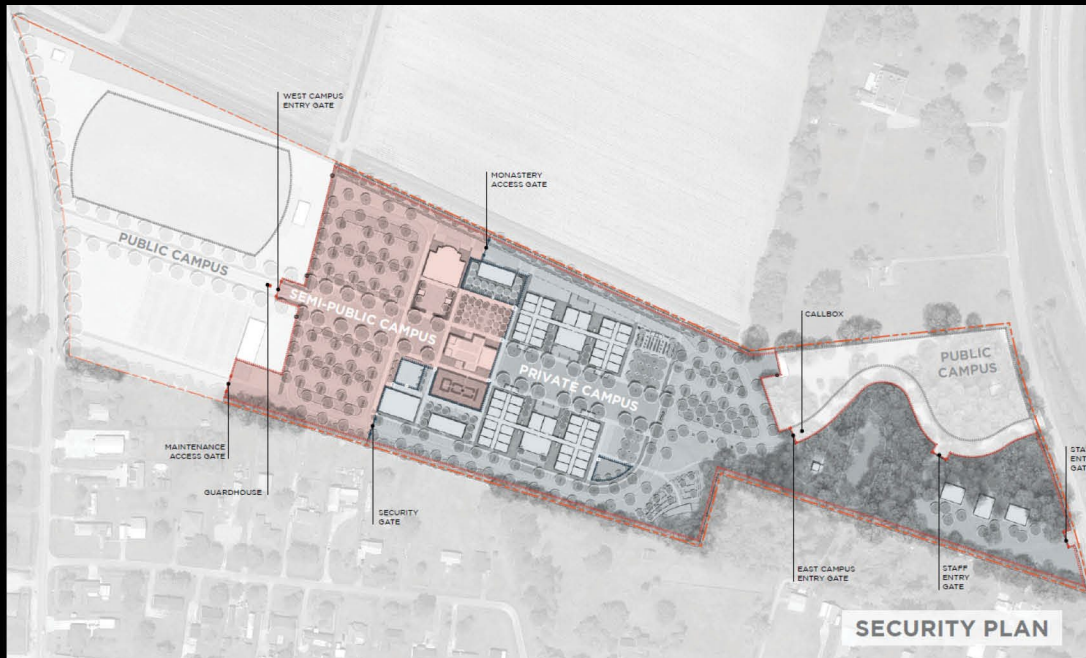
4 | Community Courtyard

5 | Low Plantings

*Cultural Center from
Community Courtyard*

Elevation Sketch





MP-55.10

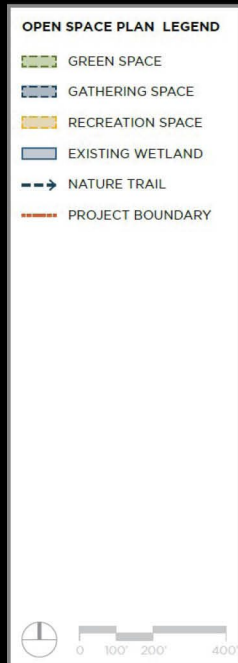
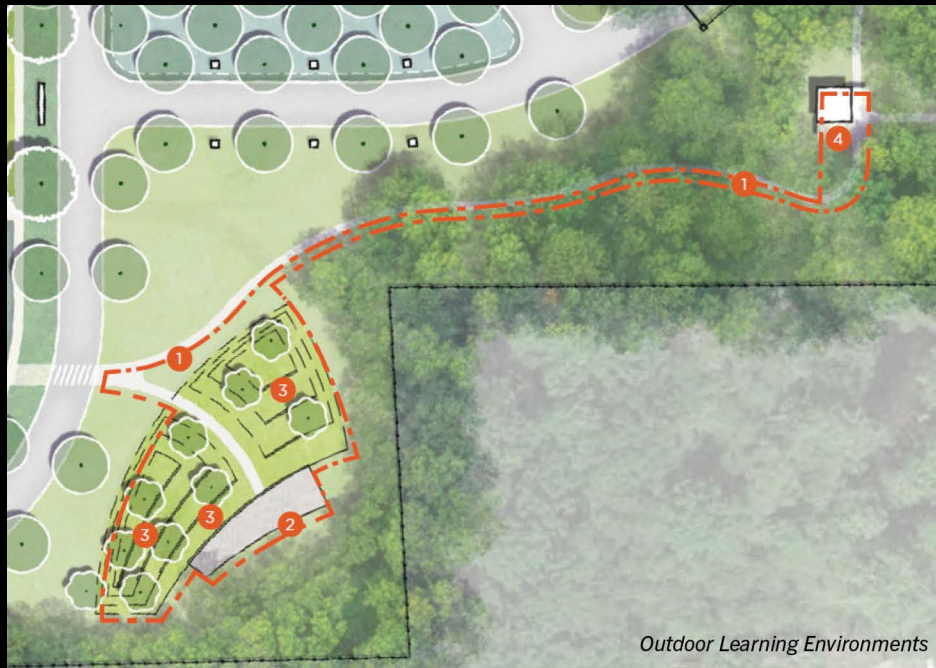
CIRCULATION & SECURITY

Located between two major vehicular thoroughfares, campus pick-up and drop-off traffic is designed to accommodate the two directional access points.

Vehicular circulation is designed to minimize interaction of pedestrians and cars by restricting vehicles to the campus perimeter.

Pedestrian circulation features two main pathways along the Central Lawn for efficient movement within the campus core.

Security is somewhat complex due to parts of the campus being semi-public and large in size, so minimizing access points is imperative. Fencing surrounds key areas, and entry is regulated through gates at the east and west entrances.



MP-55.11

OPEN SPACE & RECREATION

Critical to the campus, open spaces will support a variety of programming. With the Stations of the Cross seamlessly incorporated into the covered walkway around its perimeter, the Central Lawn will serve as the primary gathering area for students and faculty alike.

Recreational spaces are organized at the edges of campus, and along with the existing woodlands, they help buffer the campus core from the adjacent roadways.

OUTDOOR LEARNING ENVIRONMENTS

Two spaces on campus are specifically dedicated to support the overall outdoor educational curriculum of the school:

1. The Amphitheater: designed as a quiet, peaceful space that functions as both an outdoor classroom or performance venue.
2. Ecological Pavilion: an open-air pavilion surrounded by a small plaza that facilitates science and nature-based activities.

MP-55.12

STORMWATER MANAGEMENT

The site's limited topography and minimal existing infrastructure create a challenging yet exciting opportunity for the campus' stormwater management strategy.

Rain gardens and bioswales around each building (complete with overflow structures and French drains) help capture roof water, directing the runoff to the larger conveyance zones along the north and south property lines.



STORMWATER PLAN LEGEND

- BAYOU TERREBONNE WATERSHED
- PHILIPS CANAL WATERSHED
- RAIN GARDEN
- DETENTION BASIN
- UNDERGROUND PIPE
- CONVEYANCE DIRECTION
- SHEET FLOW
- PROJECT BOUNDARY
- RIDGELINE



“For we are God’s fellow workers; you are God’s field,
you are God’s building.”

1 Corinthians 3:9 NKJV

MP-55.13

CONCLUSION:
“A BEACON *IN THE FIELD*”

The Master Plan embodies the essence of a classical education within a Catholic context, resulting in a campus that ignites both the heart and mind, focused on truth, beauty, and goodness from God.

The plan has become:
A Beacon in the Field.

