

Program Summary:

A sensitive restoration and expansion of a university's School of Architecture that modernizes academic space while celebrating the building's historic legacy.

Program Statement:

Originally constructed in 1909, the landmark building is located on the University's academic quad. The renovation and expansion of the facility reimagines it as a contemporary home for the School of Architecture, preserving its historic significance while preparing it to serve future. The project addressed two primary challenges: lack of programmable space and noncompliance with modern life safety codes. A new addition was carefully sited at the rear of the building, respecting the building's historic quad-facing façade while increasing the school's usable area through a clear, deferential massing strategy. The addition includes off seminar rooms, gallery space and an interstitial level housing faculty offices. Internally, the project reorganized decades of disjointed programming into a clear and legible plan. Key programmatic moves included expanding fabrication labs, relocating administrative offices to define a true entry sequence, and restoring the historic stair to connect new and old program zones. Material and detail choices express a language of contrast, making clear what is new while reinforcing the character of the original structure. This thoughtful balance of preservation and progress reinforces the university's identity and offers a dynamic, high-performing academic environment for the next century.

A-305.01

Building Area: (sf)
68,325 SF

Cost per Square Foot:
\$515/SF

Construction Cost
\$35,131,880

Date of Completion:
November 2024

A-305.01

Project Overview

While the building's historic presence and visual identity remain central to the campus, it no longer met the needs of a modern design education.

The project encompasses a full renovation and a new rear addition. Together, these interventions reorganize the existing building and expand its functionality to support a growing academic program. The addition houses new seminar and gallery spaces, as well as faculty offices—strategically inserted to preserve the existing structure's scale and architectural character.

New architectural elements are expressed in a modern language that respects the scale, rhythm, and materiality of the original, while clearly asserting their own identity.





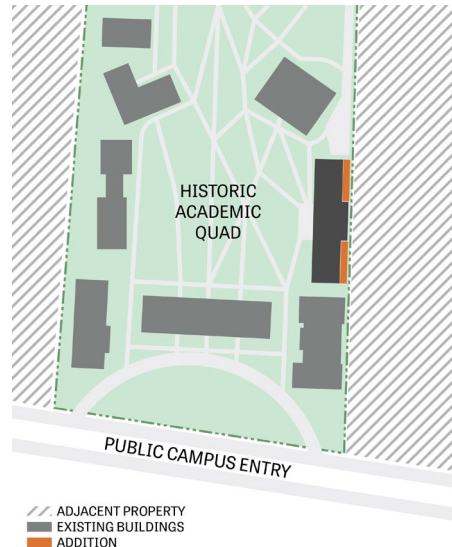
A-305.02

New Addition Site Strategy

The original building was constructed in 1909 and is a landmark on the university campus. Its prominent location on the original academic quad makes it both a visual anchor and a vital part of the university's architectural legacy. While the historic structure required sensitive restoration, a contemporary addition accommodated new teaching spaces and faculty offices which support the school's growing academic needs.

The site presented complex constraints: preserving the historic quad and respecting an adjacent property line significantly limited expansion opportunities.

To maximize new building footprint while respecting the scale and identity of the original building, twin additions were carefully positioned behind the existing wings, flanking and bridging the original central volume. This approach maintained the iconic quad-facing façade and preserved the building's place in the campus landscape.



Site Map – Project Location

A-305.03

New Addition & Existing Building Structural Strategies

Preserving the original structure while supporting new intervention required a finely tuned structural strategy. Structural steel from the new addition was pocketed into the historic brick masonry—allowing for integration without compromising the original envelope.

This approach enables architectural differentiation through structural separation—a move that's both elegant and efficient.

Additionally, termite-damaged trusses and dormers in the original roof were restored through careful lifting, selective rebuilding, and steel plate reinforcement. These measures preserve the historic silhouette while extending the life and performance of the structure.



New Addition Steel Pocketed into Existing Masonry



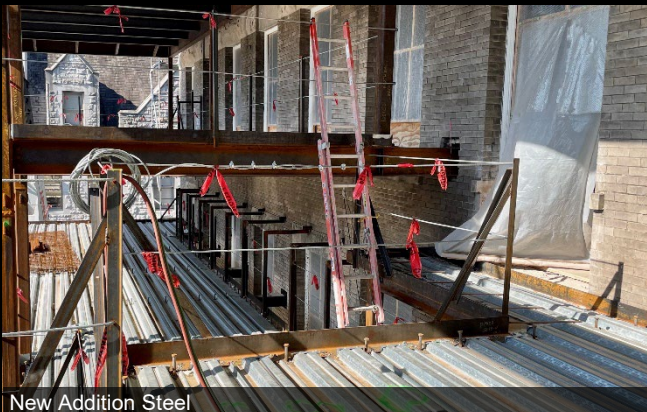
Historic Truss Shoring



New Addition Steel



Historic Truss & Dormer Restoration



New Addition Steel



Historic Floor Joist Restoration

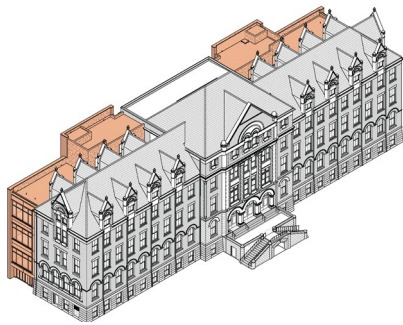
A-305.04

New Addition Massing Strategy

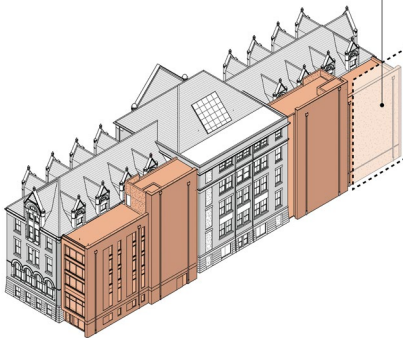
To preserve the original building's visual prominence, the addition was deliberately designed to be complementary and deferential. Its height, massing, and material expression were carefully considered to maintain a clear hierarchy that reduces visual impact and emphasizes the historic form.

While the original wings are four stories, the central core included a fifth floor. The new addition takes advantage of this condition, allowing for a taller new mass at the center which increases fifth-floor usable space. The addition steps down at the wings, allowing the historic dormers to remain visible. A recessed parapet further reduces visual weight when viewed from the quad or surrounding walkways.

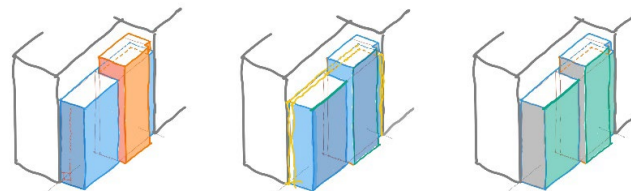
Generous floor heights in the existing structure also allowed for the insertion of an additional new addition floor level, maximizing usable area without increasing overall mass.



EXISTING ADJACENT PARKING STRUCTURE



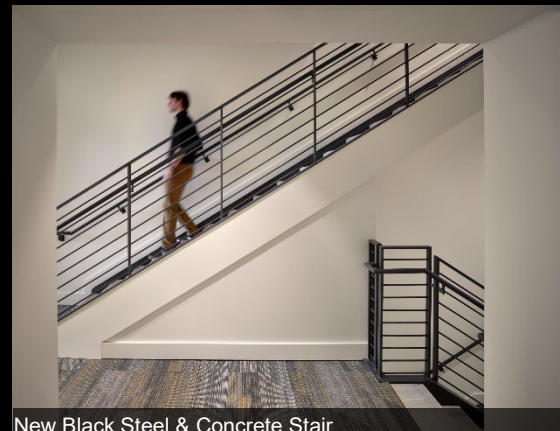
NEW ADDITION MASS



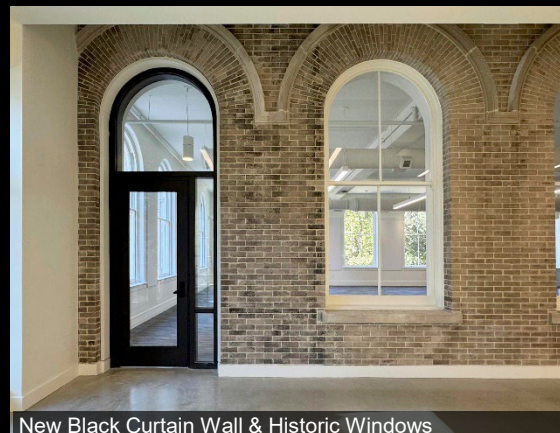
Material & Massing Process Studies



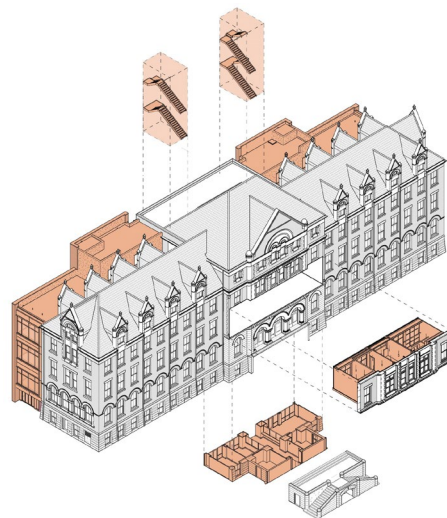
New Black Metal Panels & Historic Masonry



New Black Steel & Concrete Stair



New Black Curtain Wall & Historic Windows



AREAS OF INTERVENTION

HISTORIC FABRIC NEW INTERVENTION



A-305.05

Language of Intervention

Throughout, the design team embraced a philosophy of contrast. Rather than replicate the historic fabric, the new interventions highlight the craftsmanship and character of the original through intentional differentiation. The result is a thoughtful dialogue between old and new—one that honors the building's legacy while advancing its future.

Materially, the new façade compliments the original masonry through use of brick veneer. Where new meets old, recessed charcoal metal panels delineate the intervention while curtain wall contrasts the historic wood hung sash windows. Soldier coursing recalls the limestone base, and the new fenestration with recessed brick and curtain wall echoes both the rhythm of the historic windows and the dormers above. These elements acknowledge the materials, scale, and cadence of the original building while expressing the new work with clarity and contrast.

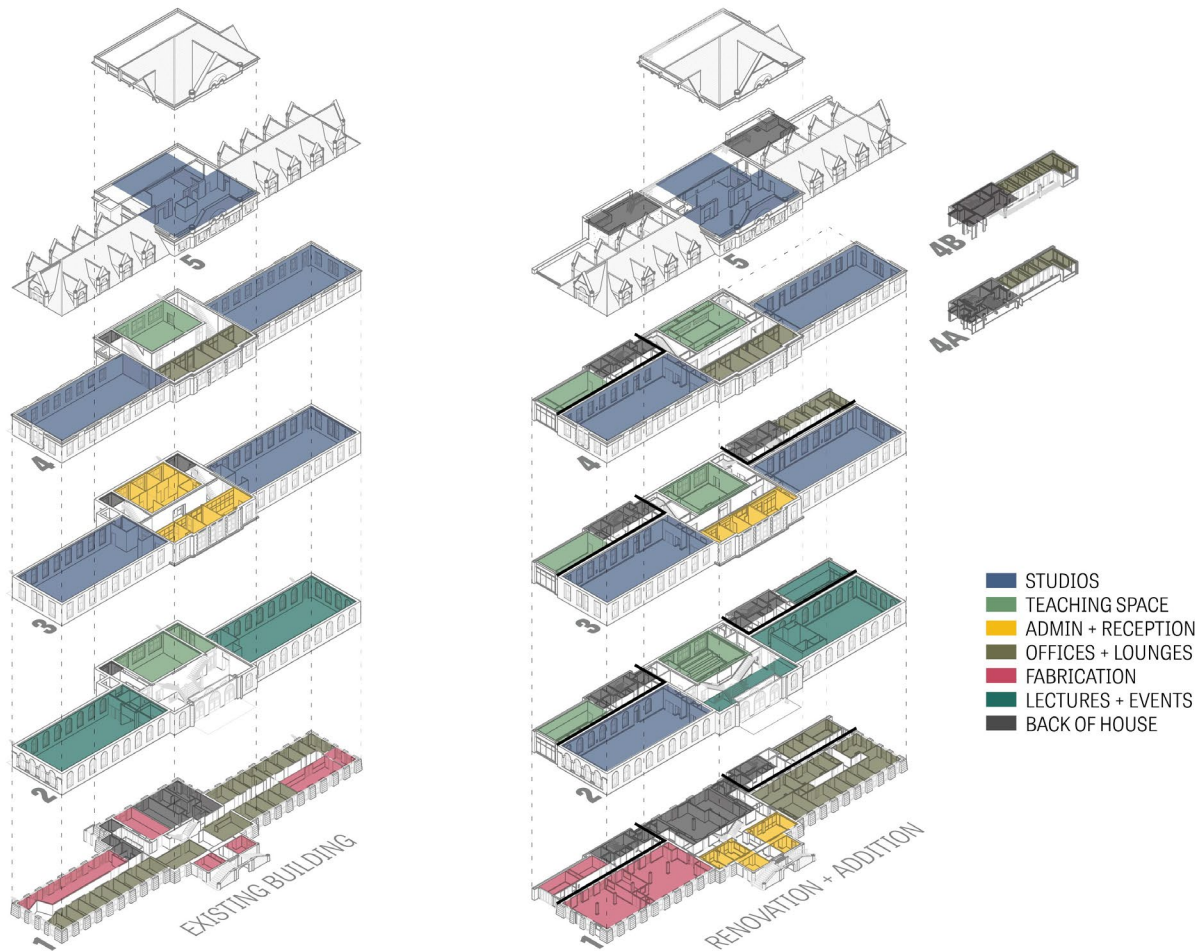
This established language of intervention continues throughout the interior spaces, both within the existing building and in the new addition.

A-305.06

Program Reconfiguration

The pre-renovation program adjacencies developed organically over several decades and were disjointed and inefficient. Thoughtful reorganization and placement of new programming created dynamic new learning spaces that are more intuitive for both daily users and visitors.

The new programming was also designed to meet the growing and evolving needs of the school—prioritizing spatial clarity, flexibility, and student engagement. This deliberate zoning of program elements resulted in a cohesive academic environment that respects the historic setting while enabling modern functionality.



A-305.07

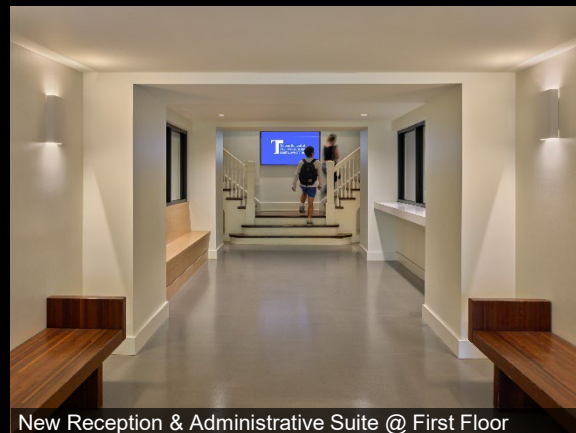
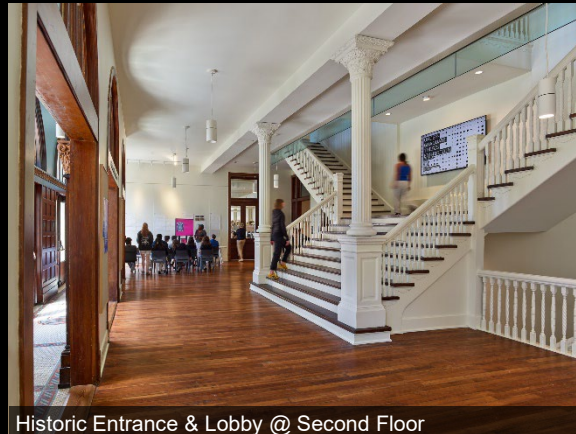
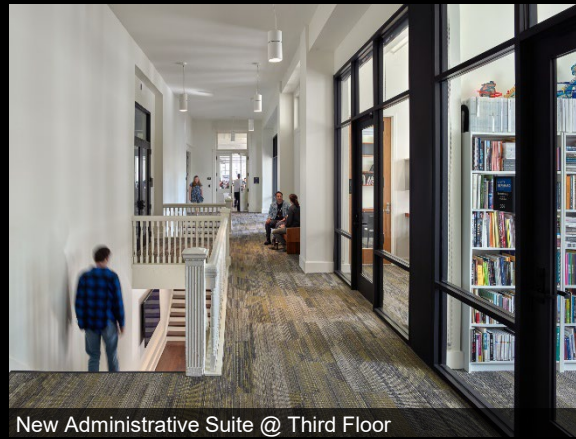
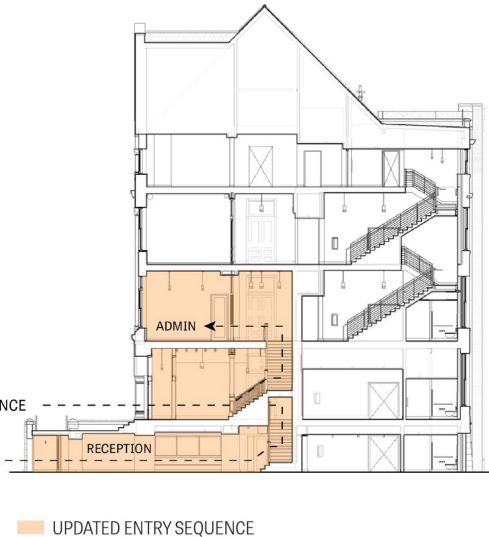
Program Reconfiguration: Entry Sequence

One of the legacy issues from the original building was the lack of a sense of entry and difficult to find administrative areas.

This internal planning made for a more intentional entry sequence and vertical movement strategy—leading to a deeper design exploration of historic versus new stairs and the ceremonial experience of circulation throughout the building.

By integrating programming and circulation from the beginning, the project redefined how users interact with the building. The team moved the administrative reception area from the third to the first floor—establishing a clear, welcoming main entry.

The redesign brings clarity and cohesion, ensuring that the experience of moving through the building is both intuitive and efficient. Reception, academic, and student zones are now clearly organized and accessible—reflecting the project's deep commitment to functional design.

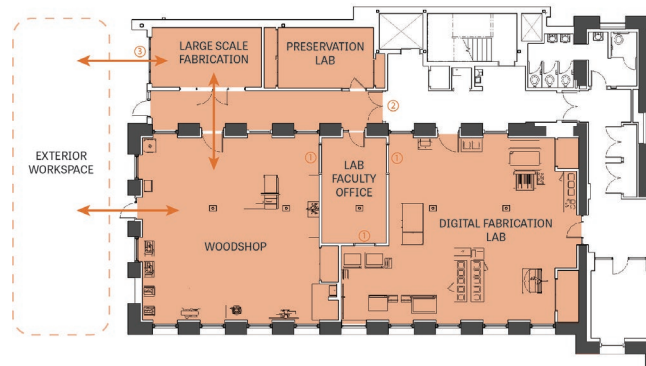




Fabrication Lab: Woodshop



Fabrication Lab: Outdoor Workspace



■ FABRICATION LABS

- ① PASSIVE SUPERVISION WINDOWS
- ② ACOUSTIC DOOR
- ③ 9x8 GLASS BIFOLD DOORS

A-305.08

Program Reconfiguration: Fabrication Labs

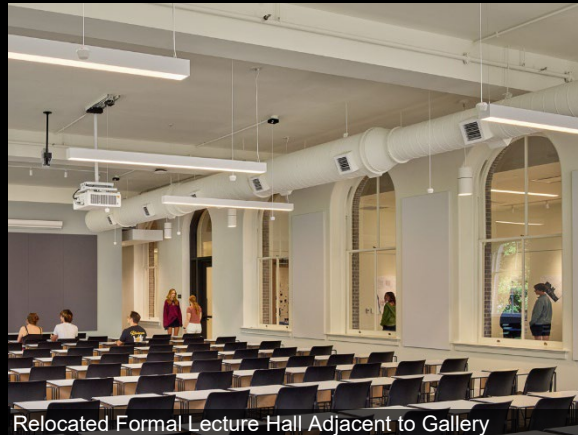
The original fabrication labs were undersized and scattered throughout the first floor. Use was limited by poor acoustic separation, most notably with the formal lecture hall located directly above the wood shop.

To optimize functionality, the labs were consolidated in the north wing around a central office space that allows for student supervision. Specialized acoustic treatments were introduced to isolate sound and the lecture hall was relocated to the opposite wing. Large operable bifold doors were added to improve access for material handling and indoor/outdoor project flexibility.

The result is a dynamic, well-integrated fabrication lab that supports a core part of the architectural curriculum while improving user experience and building performance.



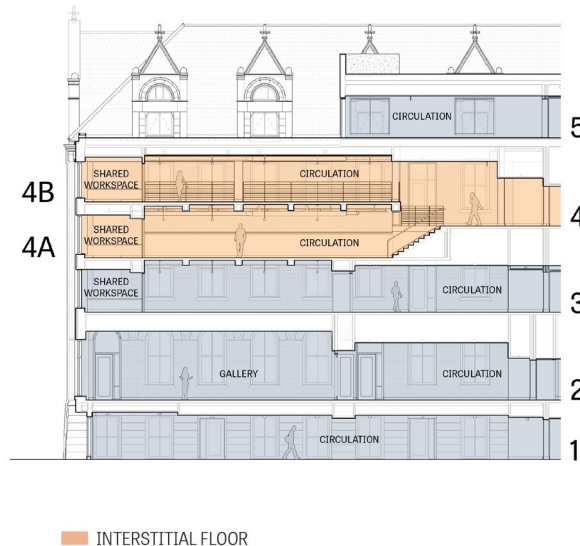
New Gallery Adjacent to Lecture Hall



Relocated Formal Lecture Hall Adjacent to Gallery



Restored Studio Adjacent to New Faculty Offices



A-305.09

Program Reconfiguration:
Interstitial Floor & Studio
Adjacencies

One of the most impactful spatial strategies was the insertion of an interstitial floor.

The interstitial floor is a strategic insertion that underscores the project's core design tenets: maximizing use within constraints and maintaining architectural integrity. While invisible from the quad, it enables the building to meet evolving academic needs—providing faculty workspace in a discreet, structurally sound manner.

It's expressed as a modern architectural gesture: clearly new yet harmoniously integrated into the existing structural framework. The interstitial level acts as a quiet intervention—preserving the legibility of the historic envelope while advancing functionality.

This move dramatically increased the usable area without exceeding zoning height limits—a creative and efficient solution that respected the building's external proportions. This newly created floor, sandwiched between the fourth floor and the roof, houses faculty offices.





A-305.10

The building now serves as a living example of how institutions can honor architectural heritage while embracing forward-thinking design.

The new addition supports the evolving needs of an academic program rooted in making, thinking, and building—without compromising the integrity of its historic core.

Through deliberate material contrasts, spatial clarity, and a site-sensitive massing strategy, the project creates a legible and inspiring home for design education.